

Data Path : Z:\pestpcbsrv\HPCHEM1\ECD\_0\Data\P0021020\  
 Data File : P0066408.D  
 Signal(s) : Signal #1: ECD1A.CH Signal #2: ECD2B.CH  
 Acq On : 10 Feb 2020 11:38  
 Operator : DD\AJ  
 Sample : L1439-01RE  
 Misc :  
 ALS Vial : 11 Sample Multiplier: 1

Instrument :  
 ECD\_0  
 ClientSampleId :  
 HAM-SB-BC-0-5RE

Integration File signal 1: autoint1.e  
 Integration File signal 2: autoint2.e  
 Quant Time: Feb 11 00:44:14 2020  
 Quant Method : Z:\pestpcbsrv\HPCHEM1\ECD\_0\methods\P0020720.M  
 Quant Title : GC EXTRACTABLES  
 QLast Update : Thu Feb 06 18:14:46 2020  
 Response via : Initial Calibration  
 Integrator: ChemStation 6890 Scale Mode: Small noise peaks clipped

Volume Inj. : 2 µl  
 Signal #1 Phase : ZB-MR1 Signal #2 Phase: ZB-MR2  
 Signal #1 Info : 30Mx0.32mmx 0.50µ Signal #2 Info : 30M x 0.32mm x 0.25µm

| Compound                    | RT#1  | RT#2  | Resp#1  | Resp#2  | ng/ml   | ng/ml      |
|-----------------------------|-------|-------|---------|---------|---------|------------|
| System Monitoring Compounds |       |       |         |         |         |            |
| 1) SA Tetrachlo...          | 4.152 | 3.429 | 952727  | 1051541 | 33.776  | 26.777     |
| 2) SA Decachlor...          | 9.642 | 8.320 | 741965  | 991284  | 17.967  | 17.037     |
| Target Compounds            |       |       |         |         |         |            |
| 3) L1 AR-1016-1             | 5.318 | 4.447 | 88185   | 151098  | 71.794  | 102.886 #  |
| 4) L1 AR-1016-2             | 5.318 | 4.511 | 88185   | 1060381 | 47.184  | 372.068 #  |
| 5) L1 AR-1016-3             | 5.390 | 4.657 | 54862   | 263111  | 48.844  | 211.322 #  |
| 6) L1 AR-1016-4             | 5.478 | 4.715 | 121701  | 895042  | 130.685 | 872.259 #  |
| 7) L1 AR-1016-5             | 5.771 | 4.878 | 515125  | 115753  | 538.874 | 86.485 #   |
| 9) L2 AR-1221-2             | 0.000 | 3.767 | 0       | 75280   | N.D.    | 252.866 #  |
| 10) L2 AR-1221-3            | 0.000 | 3.767 | 0       | 75280   | N.D.    | 74.352 #   |
| 11) L3 AR-1232-1            | 0.000 | 3.767 | 0       | 75280   | N.D.    | 98.468 #   |
| 12) L3 AR-1232-2            | 5.037 | 4.511 | 195125  | 1060381 | 629.166 | 1002.385 # |
| 13) L3 AR-1232-3            | 5.318 | 4.657 | 88185   | 263111  | 129.762 | 558.724 #  |
| 14) L3 AR-1232-4            | 5.478 | 4.755 | 121701  | 312657  | 357.479 | 781.645 #  |
| 15) L3 AR-1232-5            | 5.576 | 4.878 | 180416  | 115753  | 745.580 | 255.943 #  |
| 16) L4 AR-1242-1            | 5.318 | 4.447 | 88185   | 151098  | 102.973 | 145.464 #  |
| 17) L4 AR-1242-2            | 5.318 | 4.511 | 88185   | 1060381 | 66.859  | 534.245 #  |
| 18) L4 AR-1242-3            | 5.390 | 4.657 | 54862   | 263111  | 70.090  | 295.676 #  |
| 19) L4 AR-1242-4            | 5.478 | 4.755 | 121701  | 312657  | 186.693 | 359.949 #  |
| 20) L4 AR-1242-5            | 6.208 | 5.282 | 375228  | 633357  | 464.677 | 482.700    |
| 21) L5 AR-1248-1            | 5.318 | 4.447 | 88185   | 151098  | 128.951 | 185.824 #  |
| 22) L5 AR-1248-2            | 5.576 | 4.715 | 180416  | 895042  | 192.181 | 709.514 #  |
| 23) L5 AR-1248-3            | 5.771 | 4.755 | 515125  | 312657  | 447.810 | 243.760 #  |
| 24) L5 AR-1248-4            | 6.171 | 4.878 | 200382  | 115753  | 135.973 | 72.524 #   |
| 25) L5 AR-1248-5            | 6.208 | 5.318 | 375228  | 531598  | 267.816 | 298.970    |
| 26) L6 AR-1254-1            | 6.143 | 5.282 | 184409  | 633357  | 126.787 | 227.050 #  |
| 27) L6 AR-1254-2            | 6.366 | 5.420 | 417705  | 512775  | 170.090 | 196.349    |
| 28) L6 AR-1254-3            | 6.731 | 5.815 | 1196491 | 387408  | 444.323 | 90.975 #   |
| 29) L6 AR-1254-4            | 7.004 | 6.042 | 1138068 | 677772  | 492.936 | 221.167 #  |
| 30) L6 AR-1254-5            | 7.418 | 6.455 | 391627  | 250921  | 166.659 | 57.054 #   |
| 31) L7 AR-1260-1            | 6.838 | 6.002 | 1034160 | 865854  | 485.952 | 261.669 #  |
| 32) L7 AR-1260-2            | 7.133 | 6.132 | 1123697 | 271152  | 365.431 | 52.716 #   |
| 33) L7 AR-1260-3            | 7.443 | 6.281 | 347370  | 86355   | 131.701 | 22.032 #   |
| 34) L7 AR-1260-4            | 7.707 | 6.746 | 119242  | 46384   | 47.876  | 12.804 #   |
| 35) L7 AR-1260-5            | 8.021 | 6.991 | 77335   | 121139  | 13.720  | 12.599     |
| 36) L8 AR-1262-1            | 7.443 | 6.548 | 347370  | 52139   | 100.562 | 21.802 #   |
| 37) L8 AR-1262-2            | 8.021 | 6.991 | 77335   | 121139  | 13.359  | 12.145     |
| 38) L8 AR-1262-3            | 8.314 | 7.325 | 43703   | 187328  | 11.864  | 48.909 #   |
| 39) L8 AR-1262-4            | 8.314 | 7.325 | 43703   | 187328  | 15.713  | 29.266 #   |
| 41) L9 AR-1268-1            | 8.314 | 7.325 | 43703   | 187328  | 5.929   | 15.064 #   |
| 42) L9 AR-1268-2            | 8.314 | 7.325 | 43703   | 187328  | 7.018   | 17.750 #   |
| 43) L9 AR-1268-3            | 0.000 | 7.535 | 0       | 26733   | N.D.    | 3.055 #    |

Data Path : Z:\pestpcbsrv\HPCHEM1\ECD\_0\Data\P0021020\  
 Data File : P0066408.D  
 Signal(s) : Signal #1: ECD1A.CH Signal #2: ECD2B.CH  
 Acq On : 10 Feb 2020 11:38  
 Operator : DD\AJ  
 Sample : L1439-01RE  
 Misc :  
 ALS Vial : 11 Sample Multiplier: 1

Instrument :  
 ECD\_0  
 ClientSampleId :  
 HAM-SB-BC-0-5RE

Integration File signal 1: autoint1.e  
 Integration File signal 2: autoint2.e  
 Quant Time: Feb 11 00:44:14 2020  
 Quant Method : Z:\pestpcbsrv\HPCHEM1\ECD\_0\methods\P0020720.M  
 Quant Title : GC EXTRACTABLES  
 QLast Update : Thu Feb 06 18:14:46 2020  
 Response via : Initial Calibration  
 Integrator: ChemStation 6890 Scale Mode: Small noise peaks clipped

Volume Inj. : 2 µl  
 Signal #1 Phase : ZB-MR1 Signal #2 Phase: ZB-MR2  
 Signal #1 Info : 30Mx0.32mmx 0.50µ Signal #2 Info : 30M x 0.32mm x 0.25µm

| Compound         | RT#1  | RT#2  | Resp#1 | Resp#2 | ng/ml | ng/ml   |
|------------------|-------|-------|--------|--------|-------|---------|
| 45) L9 AR-1268-5 | 9.349 | 8.094 | 37973  | 42982  | 2.441 | 1.820 # |

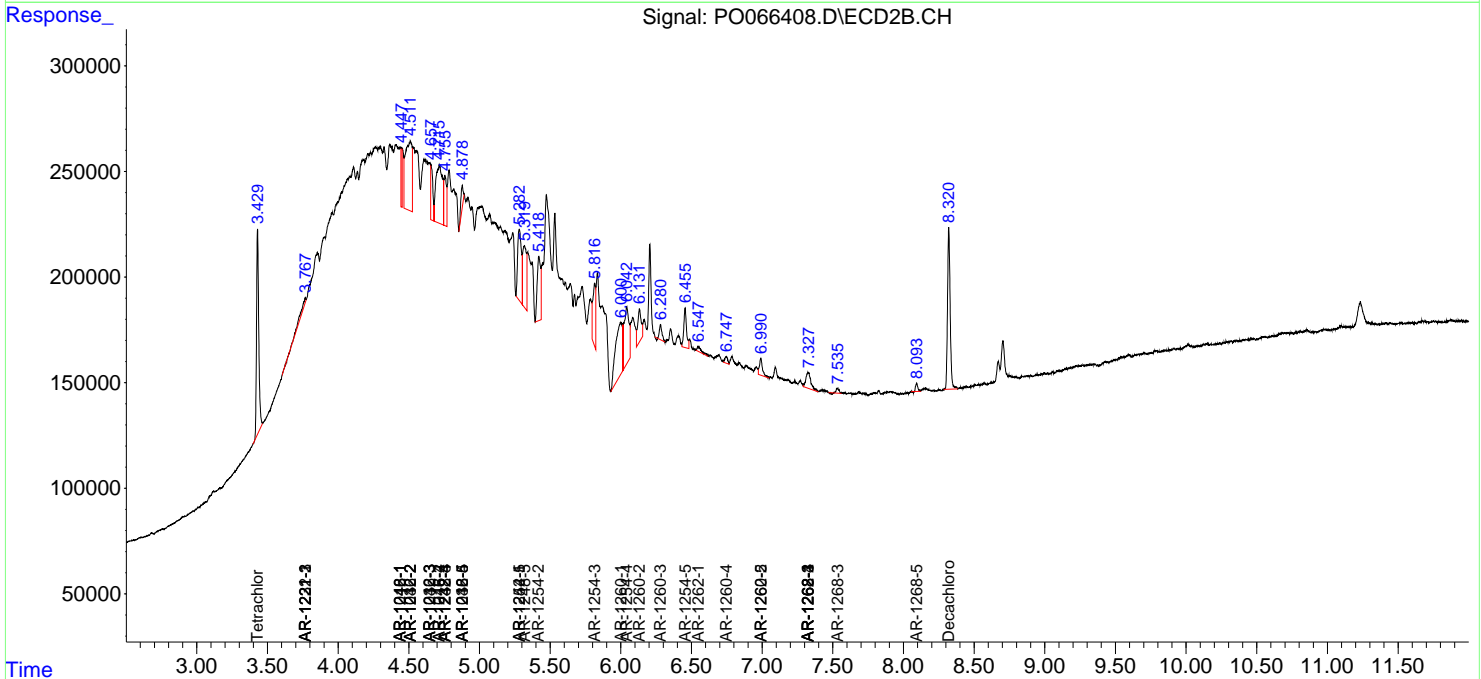
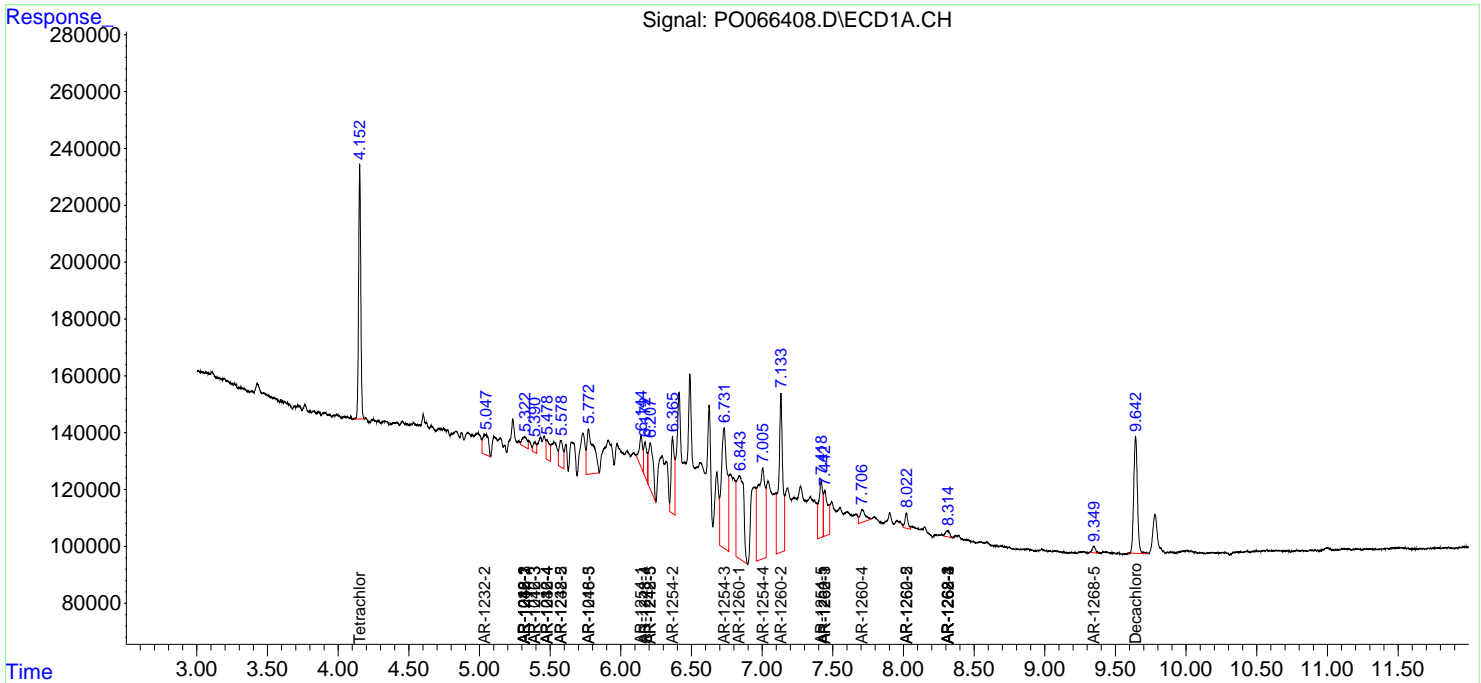
(f)=RT Delta > 1/2 Window (#)=Amounts differ by > 25% (m)=manual int.

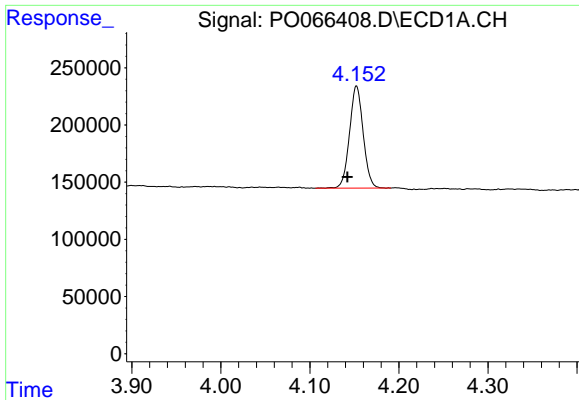
Data Path : Z:\pestpcbsrv\HPCHEM1\ECD\_O\Data\P0021020\  
 Data File : P0066408.D  
 Signal(s) : Signal #1: ECD1A.CH Signal #2: ECD2B.CH  
 Acq On : 10 Feb 2020 11:38  
 Operator : DD\AJ  
 Sample : L1439-01RE  
 Misc :  
 ALS Vial : 11 Sample Multiplier: 1

Instrument :  
 ECD\_O  
 ClientSampled :  
 HAM-SB-BC-0-5RE

Integration File signal 1: autoint1.e  
 Integration File signal 2: autoint2.e  
 Quant Time: Feb 11 00:44:14 2020  
 Quant Method : Z:\pestpcbsrv\HPCHEM1\ECD\_O\methods\P0020720.M  
 Quant Title : GC EXTRACTABLES  
 QLast Update : Thu Feb 06 18:14:46 2020  
 Response via : Initial Calibration  
 Integrator: ChemStation 6890 Scale Mode: Small noise peaks clipped

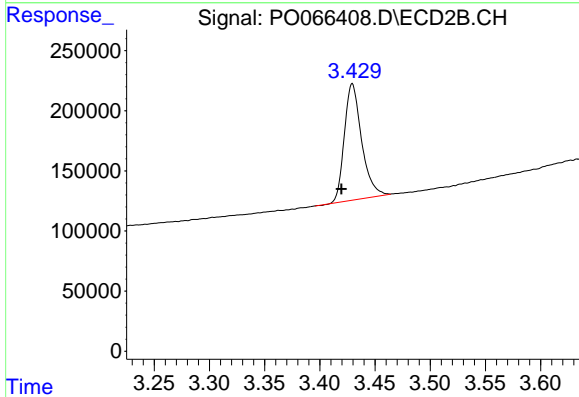
Volume Inj. : 2 µl  
 Signal #1 Phase : ZB-MR1 Signal #2 Phase: ZB-MR2  
 Signal #1 Info : 30Mx0.32mmx 0.50µ Signal #2 Info : 30M x 0.32mm x 0.25µm



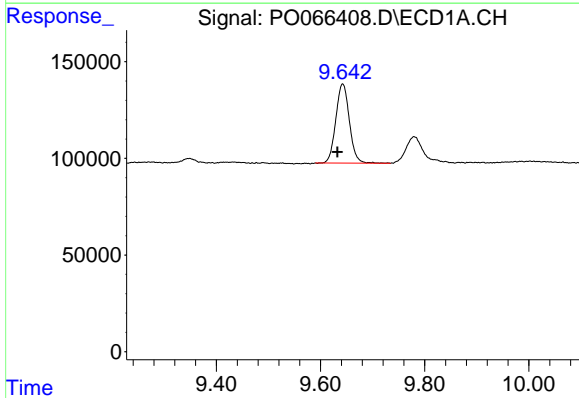


#1 Tetrachloro-m-xylene  
 R.T.: 4.152 min  
 Delta R.T.: 0.010 min  
 Response: 952727  
 Conc: 33.78 ng/ml

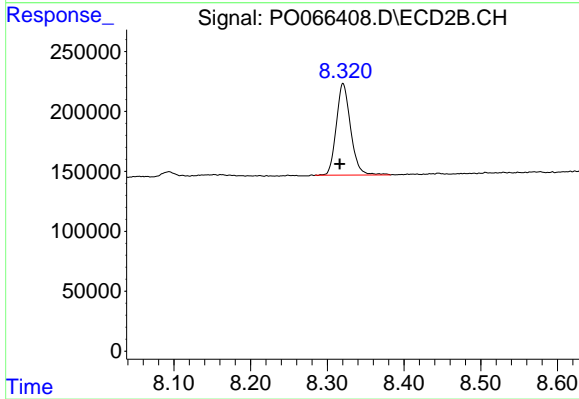
Instrument :  
 ECD\_O  
 ClientSampleId :  
 HAM-SB-BC-0-5RE



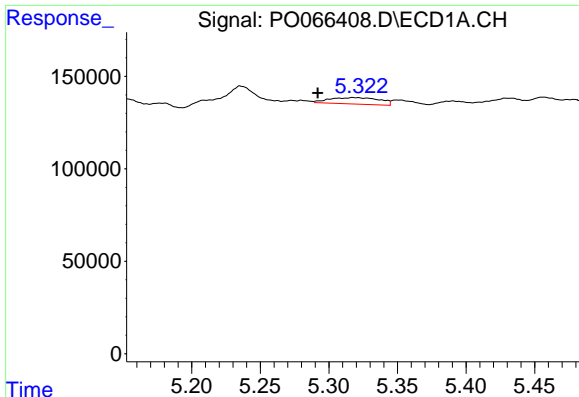
#1 Tetrachloro-m-xylene  
 R.T.: 3.429 min  
 Delta R.T.: 0.010 min  
 Response: 1051541  
 Conc: 26.78 ng/ml



#2 Decachlorobiphenyl  
 R.T.: 9.642 min  
 Delta R.T.: 0.010 min  
 Response: 741965  
 Conc: 17.97 ng/ml



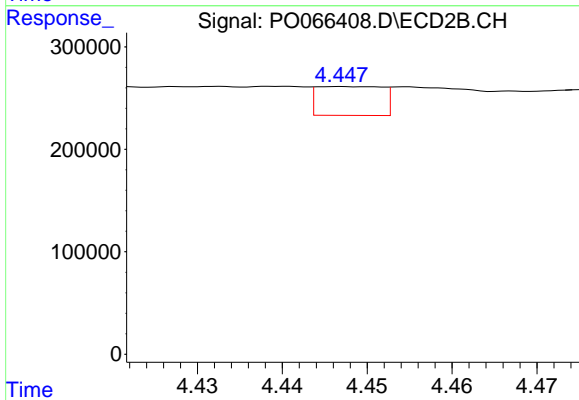
#2 Decachlorobiphenyl  
 R.T.: 8.320 min  
 Delta R.T.: 0.004 min  
 Response: 991284  
 Conc: 17.04 ng/ml



#3 AR-1016-1

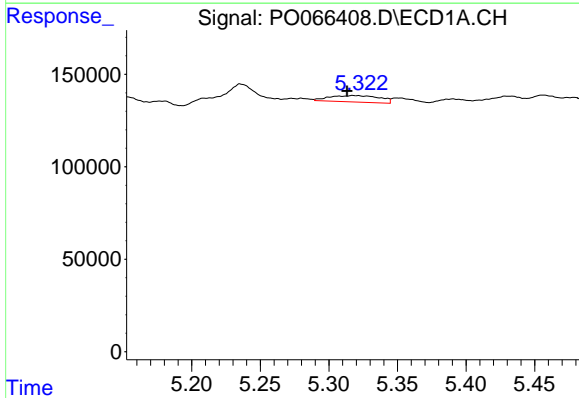
R.T.: 5.318 min  
 Delta R.T.: 0.026 min  
 Response: 88185  
 Conc: 71.79 ng/ml

Instrument :  
 ECD\_O  
 ClientSampleId :  
 HAM-SB-BC-0-5RE



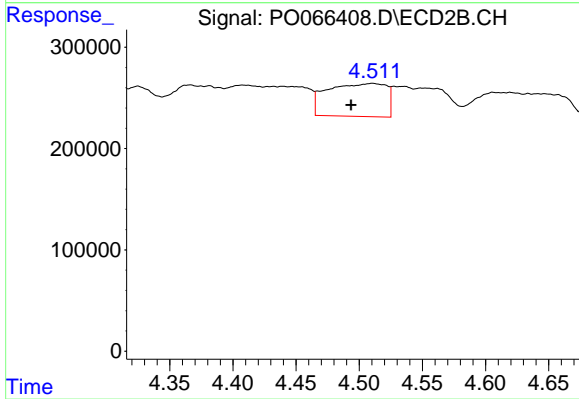
#3 AR-1016-1

R.T.: 4.447 min  
 Delta R.T.: -0.031 min  
 Response: 151098  
 Conc: 102.89 ng/ml



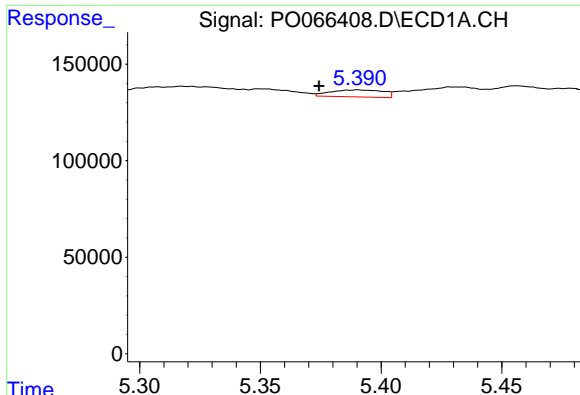
#4 AR-1016-2

R.T.: 5.318 min  
 Delta R.T.: 0.005 min  
 Response: 88185  
 Conc: 47.18 ng/ml



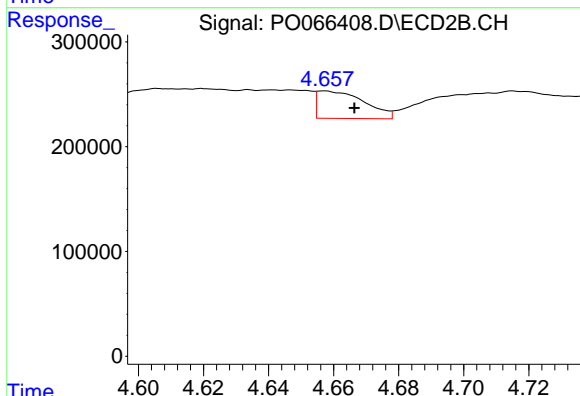
#4 AR-1016-2

R.T.: 4.511 min  
 Delta R.T.: 0.017 min  
 Response: 1060381  
 Conc: 372.07 ng/ml

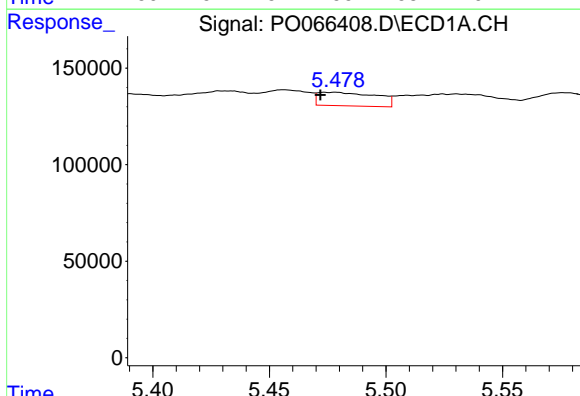


#5 AR-1016-3  
 R.T.: 5.390 min  
 Delta R.T.: 0.016 min  
 Response: 54862  
 Conc: 48.84 ng/ml

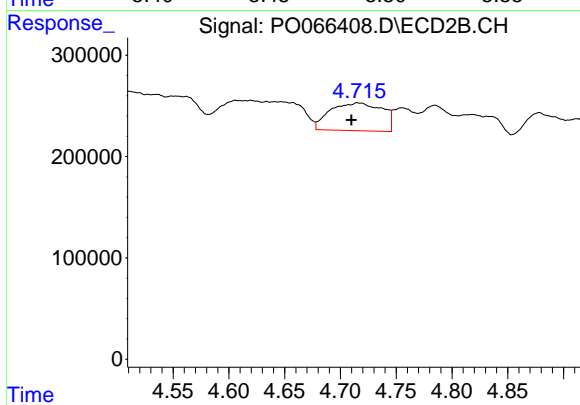
Instrument :  
 ECD\_O  
 ClientSampleId :  
 HAM-SB-BC-0-5RE



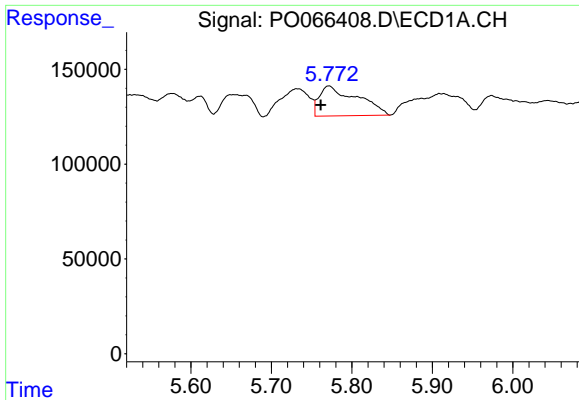
#5 AR-1016-3  
 R.T.: 4.657 min  
 Delta R.T.: -0.009 min  
 Response: 263111  
 Conc: 211.32 ng/ml



#6 AR-1016-4  
 R.T.: 5.478 min  
 Delta R.T.: 0.006 min  
 Response: 121701  
 Conc: 130.69 ng/ml

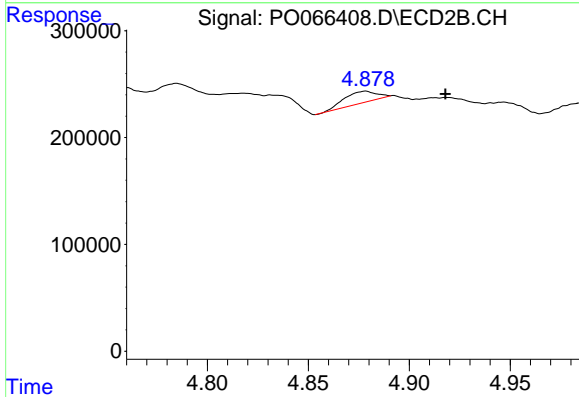


#6 AR-1016-4  
 R.T.: 4.715 min  
 Delta R.T.: 0.005 min  
 Response: 895042  
 Conc: 872.26 ng/ml

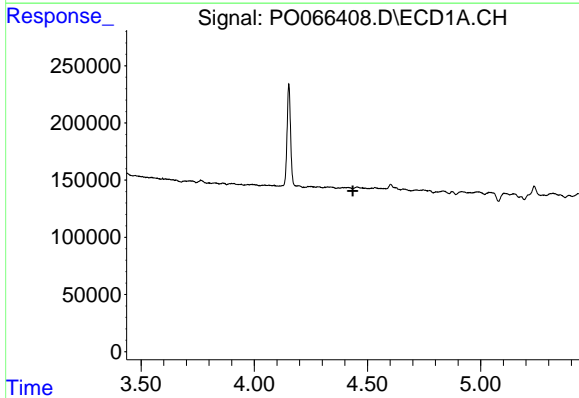


#7 AR-1016-5  
 R.T.: 5.771 min  
 Delta R.T.: 0.010 min  
 Response: 515125  
 Conc: 538.87 ng/ml

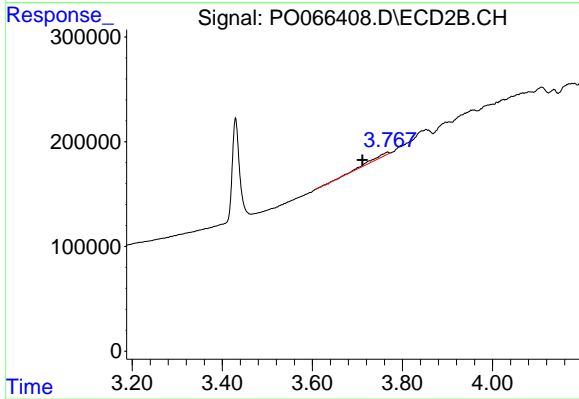
Instrument :  
 ECD\_O  
 ClientSampleId :  
 HAM-SB-BC-0-5RE



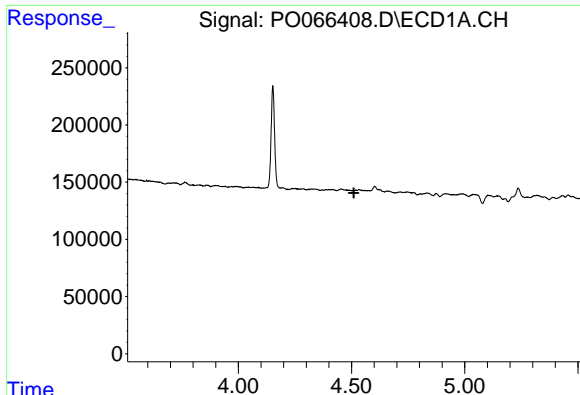
#7 AR-1016-5  
 R.T.: 4.878 min  
 Delta R.T.: -0.039 min  
 Response: 115753  
 Conc: 86.49 ng/ml



#9 AR-1221-2  
 R.T.: 0.000 min  
 Exp R.T. : 4.435 min  
 Response: 0  
 Conc: N.D.



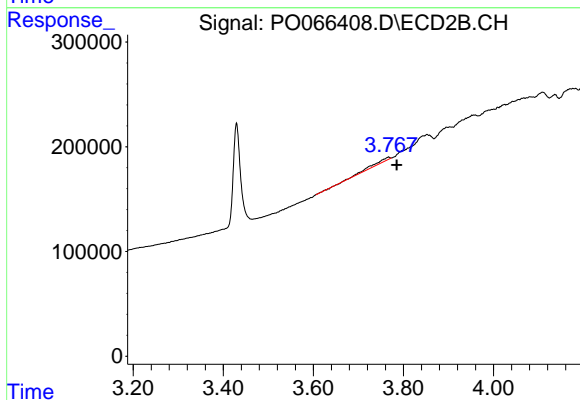
#9 AR-1221-2  
 R.T.: 3.767 min  
 Delta R.T.: 0.056 min  
 Response: 75280  
 Conc: 252.87 ng/ml



#10 AR-1221-3

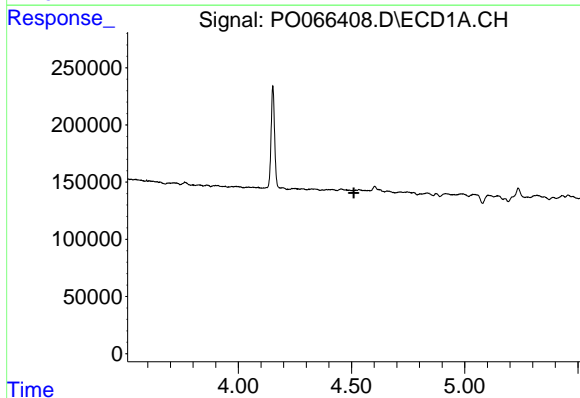
R.T.: 0.000 min  
 Exp R.T. : 4.510 min  
 Response: 0  
 Conc: N.D.

Instrument :  
 ECD\_O  
 ClientSampleId :  
 HAM-SB-BC-0-5RE



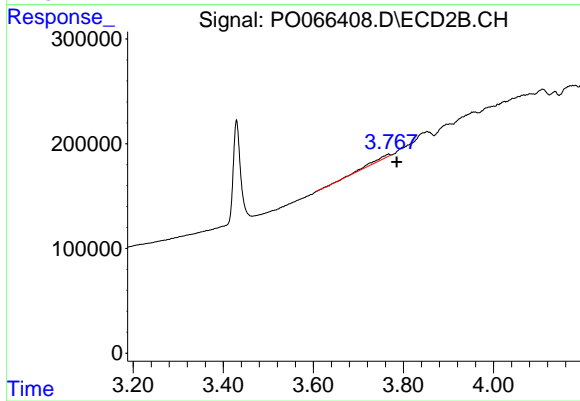
#10 AR-1221-3

R.T.: 3.767 min  
 Delta R.T.: -0.018 min  
 Response: 75280  
 Conc: 74.35 ng/ml



#11 AR-1232-1

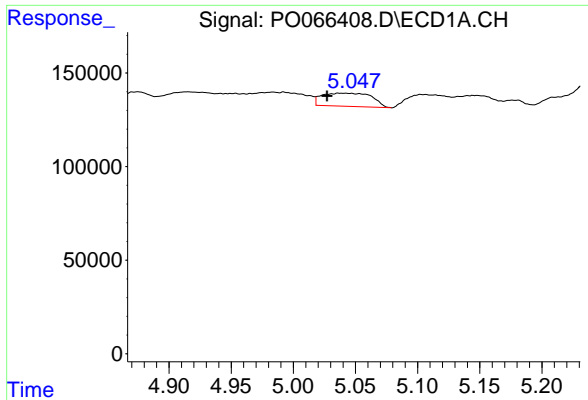
R.T.: 0.000 min  
 Exp R.T. : 4.510 min  
 Response: 0  
 Conc: N.D.



#11 AR-1232-1

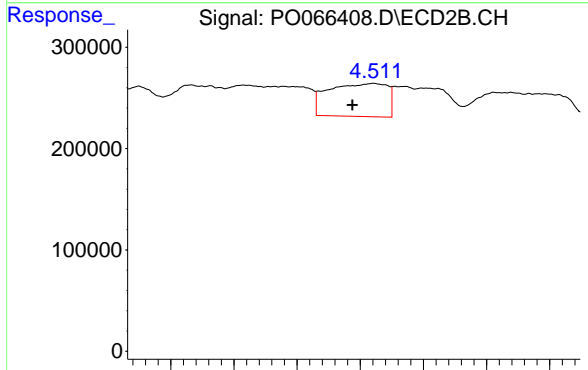
R.T.: 3.767 min  
 Delta R.T.: -0.018 min  
 Response: 75280  
 Conc: 98.47 ng/ml



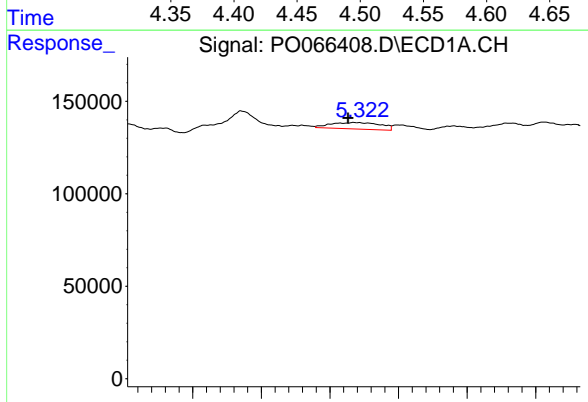


#12 AR-1232-2  
 R.T.: 5.037 min  
 Delta R.T.: 0.010 min  
 Response: 195125  
 Conc: 629.17 ng/ml

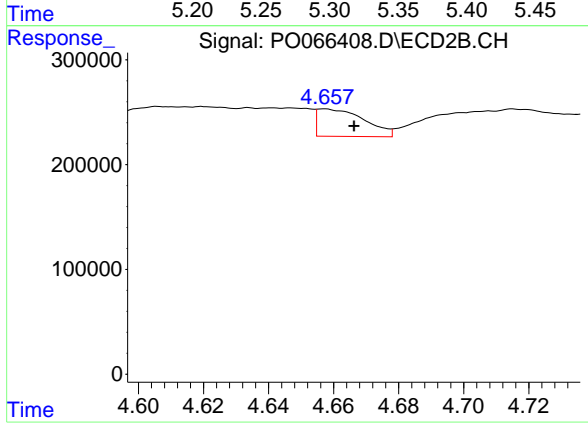
**Instrument :**  
 ECD\_O  
**ClientSampleId :**  
 HAM-SB-BC-0-5RE



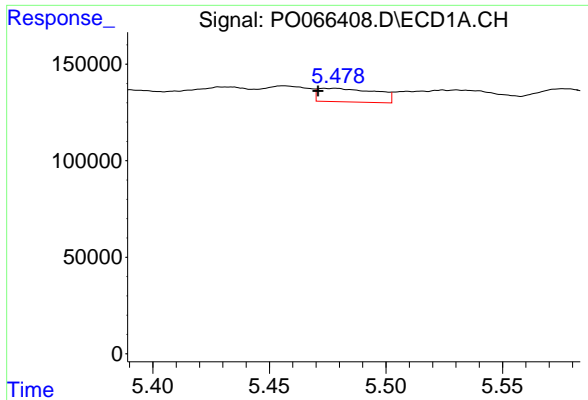
#12 AR-1232-2  
 R.T.: 4.511 min  
 Delta R.T.: 0.017 min  
 Response: 1060381  
 Conc: 1002.38 ng/ml



#13 AR-1232-3  
 R.T.: 5.318 min  
 Delta R.T.: 0.005 min  
 Response: 88185  
 Conc: 129.76 ng/ml

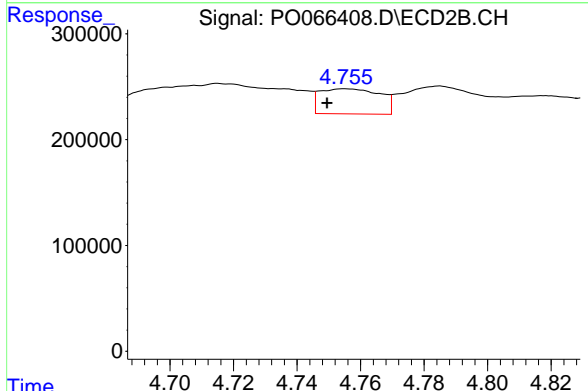


#13 AR-1232-3  
 R.T.: 4.657 min  
 Delta R.T.: -0.009 min  
 Response: 263111  
 Conc: 558.72 ng/ml

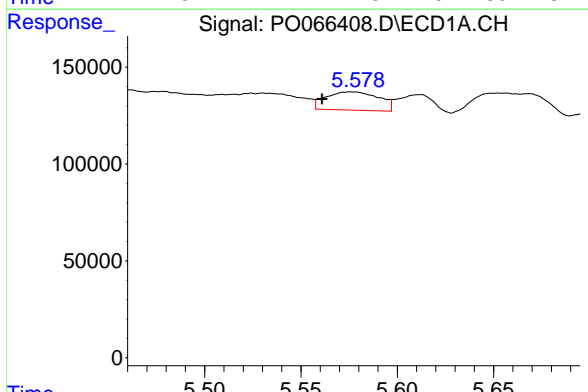


#14 AR-1232-4  
 R.T.: 5.478 min  
 Delta R.T.: 0.007 min  
 Response: 121701  
 Conc: 357.48 ng/ml

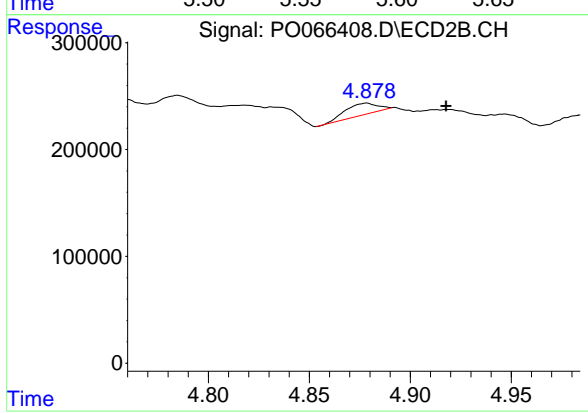
Instrument :  
 ECD\_O  
 ClientSampleId :  
 HAM-SB-BC-0-5RE



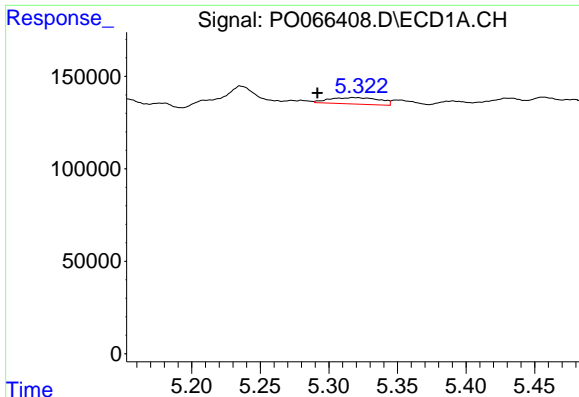
#14 AR-1232-4  
 R.T.: 4.755 min  
 Delta R.T.: 0.006 min  
 Response: 312657  
 Conc: 781.64 ng/ml



#15 AR-1232-5  
 R.T.: 5.576 min  
 Delta R.T.: 0.015 min  
 Response: 180416  
 Conc: 745.58 ng/ml



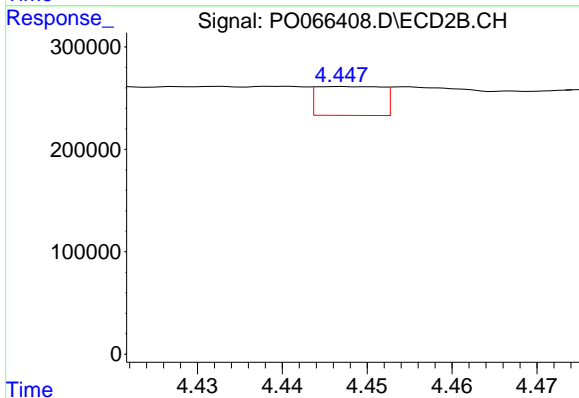
#15 AR-1232-5  
 R.T.: 4.878 min  
 Delta R.T.: -0.039 min  
 Response: 115753  
 Conc: 255.94 ng/ml



#16 AR-1242-1

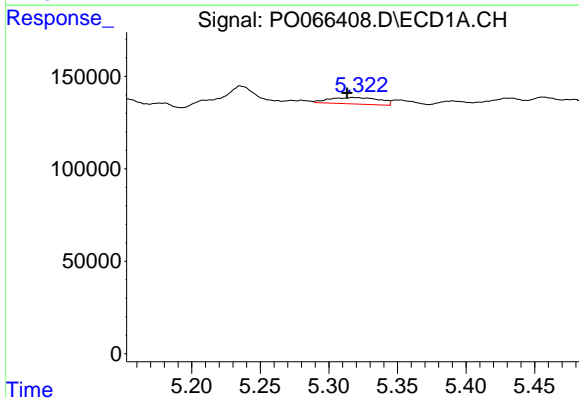
R.T.: 5.318 min  
 Delta R.T.: 0.026 min  
 Response: 88185  
 Conc: 102.97 ng/ml

Instrument :  
 ECD\_O  
 ClientSampleId :  
 HAM-SB-BC-0-5RE



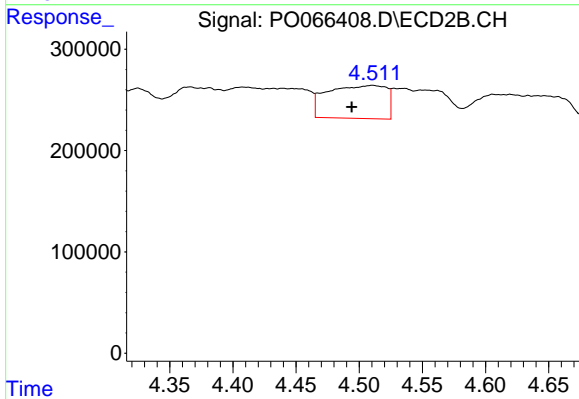
#16 AR-1242-1

R.T.: 4.447 min  
 Delta R.T.: -0.030 min  
 Response: 151098  
 Conc: 145.46 ng/ml



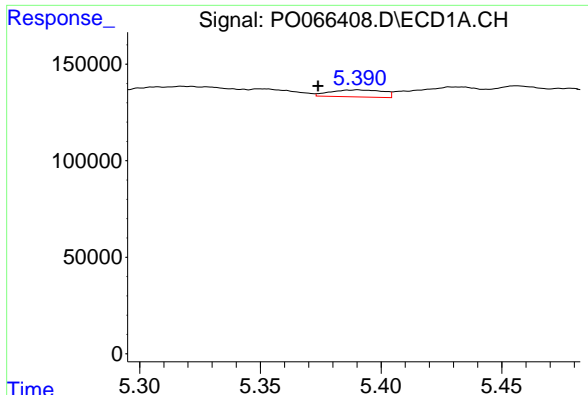
#17 AR-1242-2

R.T.: 5.318 min  
 Delta R.T.: 0.005 min  
 Response: 88185  
 Conc: 66.86 ng/ml



#17 AR-1242-2

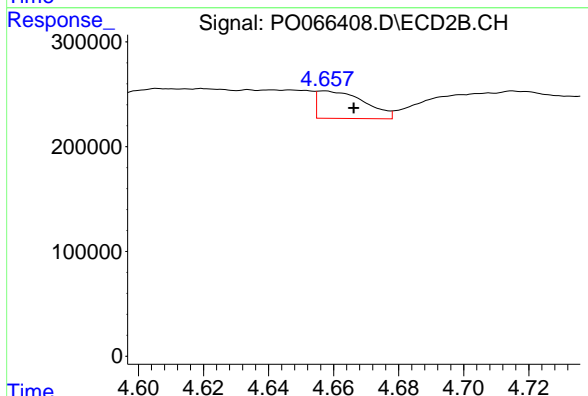
R.T.: 4.511 min  
 Delta R.T.: 0.017 min  
 Response: 1060381  
 Conc: 534.24 ng/ml



#18 AR-1242-3

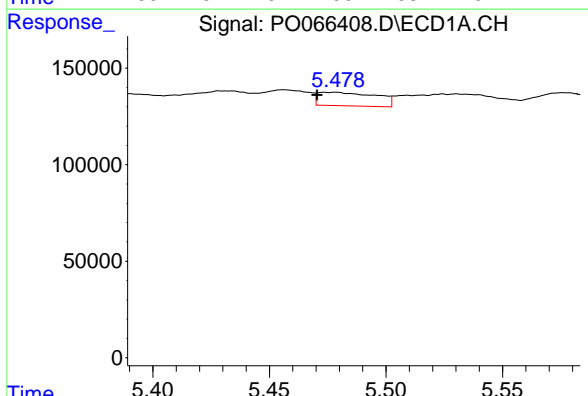
R.T.: 5.390 min  
 Delta R.T.: 0.016 min  
 Response: 54862  
 Conc: 70.09 ng/ml

Instrument :  
 ECD\_O  
 ClientSampleId :  
 HAM-SB-BC-0-5RE



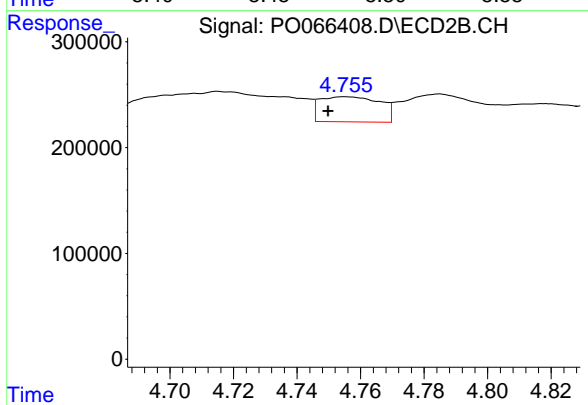
#18 AR-1242-3

R.T.: 4.657 min  
 Delta R.T.: -0.009 min  
 Response: 263111  
 Conc: 295.68 ng/ml



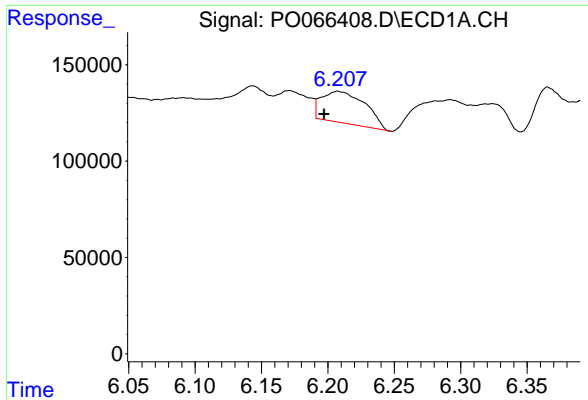
#19 AR-1242-4

R.T.: 5.478 min  
 Delta R.T.: 0.008 min  
 Response: 121701  
 Conc: 186.69 ng/ml



#19 AR-1242-4

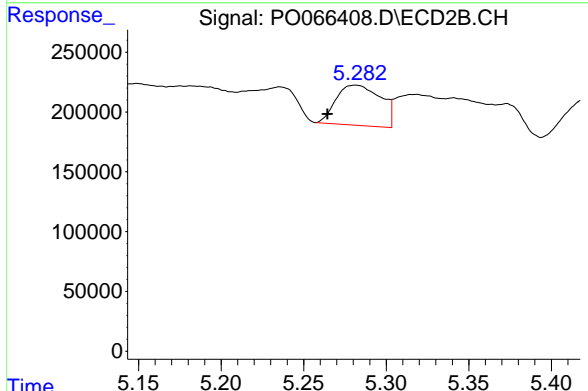
R.T.: 4.755 min  
 Delta R.T.: 0.005 min  
 Response: 312657  
 Conc: 359.95 ng/ml



#20 AR-1242-5

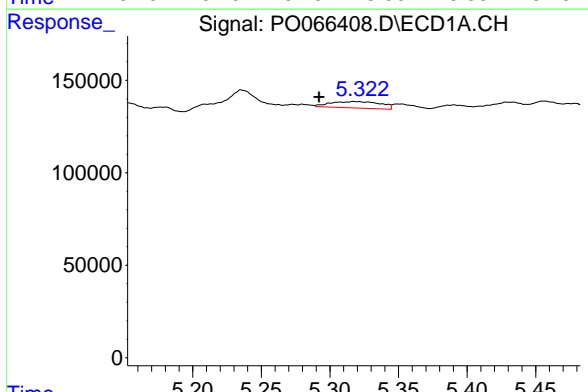
R.T.: 6.208 min  
 Delta R.T.: 0.010 min  
 Response: 375228  
 Conc: 464.68 ng/ml

Instrument :  
 ECD\_O  
 ClientSampleId :  
 HAM-SB-BC-0-5RE



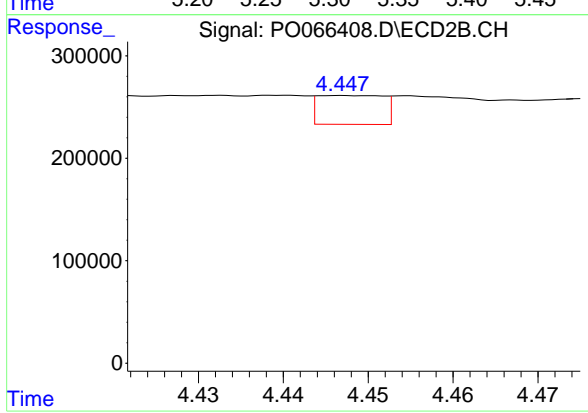
#20 AR-1242-5

R.T.: 5.282 min  
 Delta R.T.: 0.017 min  
 Response: 633357  
 Conc: 482.70 ng/ml



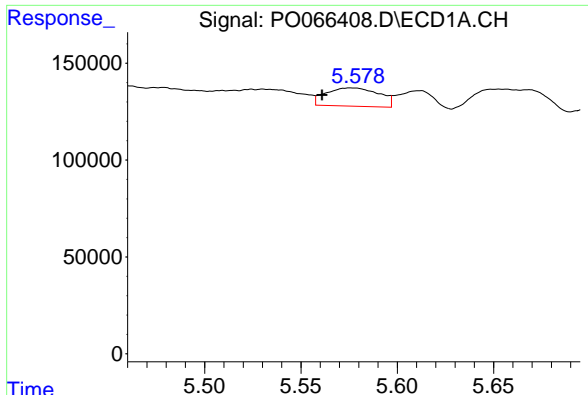
#21 AR-1248-1

R.T.: 5.318 min  
 Delta R.T.: 0.026 min  
 Response: 88185  
 Conc: 128.95 ng/ml



#21 AR-1248-1

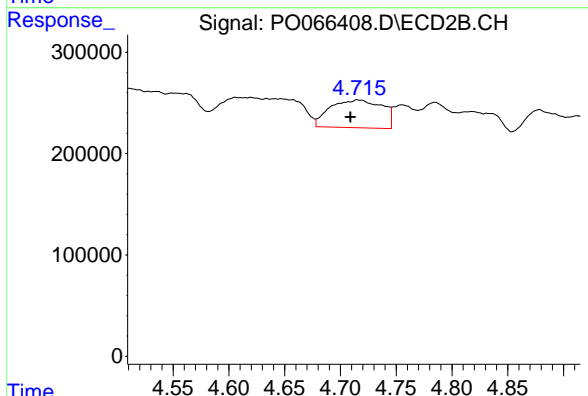
R.T.: 4.447 min  
 Delta R.T.: -0.030 min  
 Response: 151098  
 Conc: 185.82 ng/ml



#22 AR-1248-2

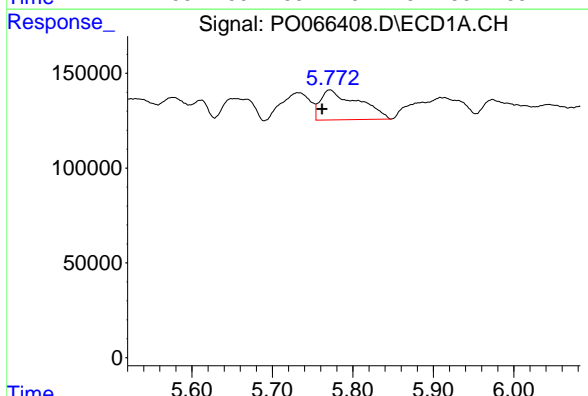
R.T.: 5.576 min  
 Delta R.T.: 0.015 min  
 Response: 180416  
 Conc: 192.18 ng/ml

Instrument :  
 ECD\_O  
 ClientSampleId :  
 HAM-SB-BC-0-5RE



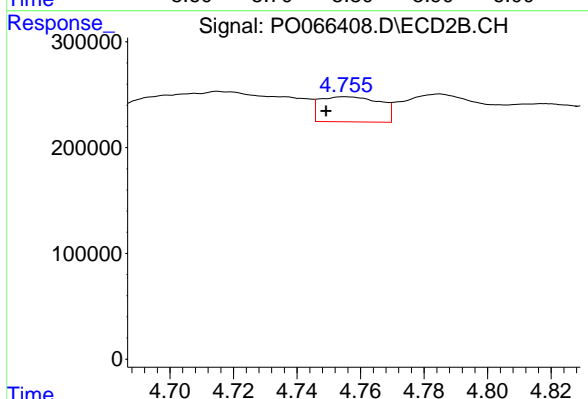
#22 AR-1248-2

R.T.: 4.715 min  
 Delta R.T.: 0.006 min  
 Response: 895042  
 Conc: 709.51 ng/ml



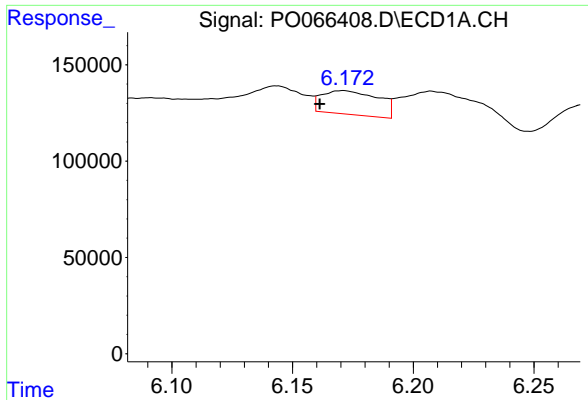
#23 AR-1248-3

R.T.: 5.771 min  
 Delta R.T.: 0.010 min  
 Response: 515125  
 Conc: 447.81 ng/ml



#23 AR-1248-3

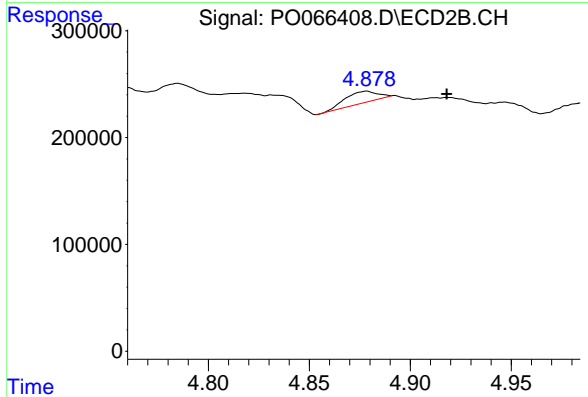
R.T.: 4.755 min  
 Delta R.T.: 0.006 min  
 Response: 312657  
 Conc: 243.76 ng/ml



#24 AR-1248-4

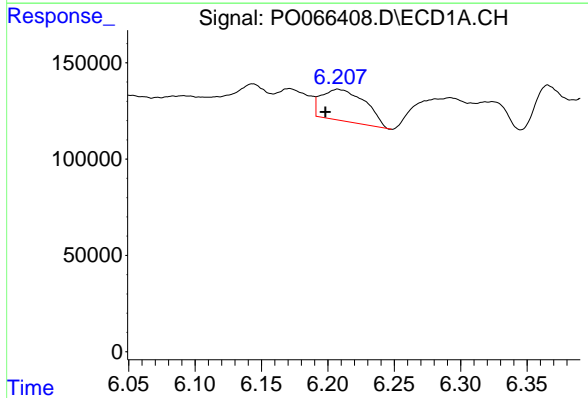
R.T.: 6.171 min  
 Delta R.T.: 0.010 min  
 Response: 200382  
 Conc: 135.97 ng/ml

Instrument :  
 ECD\_O  
 ClientSampleId :  
 HAM-SB-BC-0-5RE



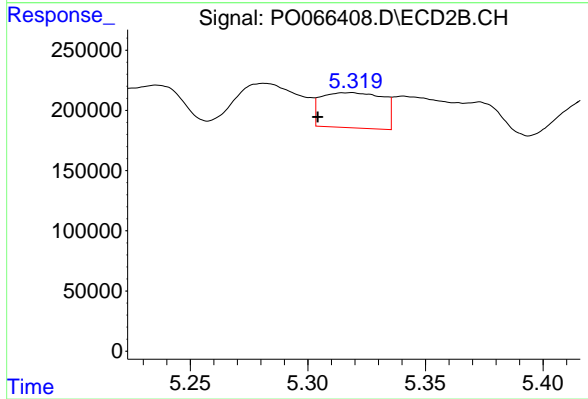
#24 AR-1248-4

R.T.: 4.878 min  
 Delta R.T.: -0.040 min  
 Response: 115753  
 Conc: 72.52 ng/ml



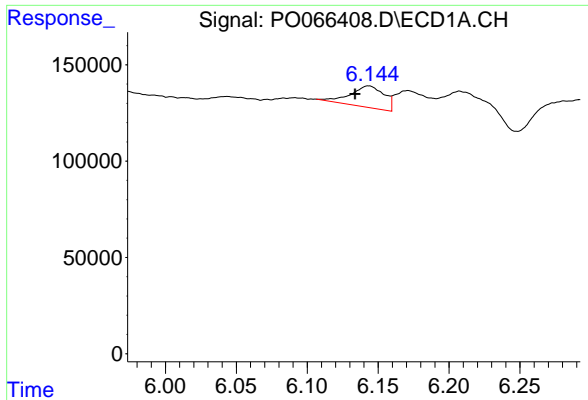
#25 AR-1248-5

R.T.: 6.208 min  
 Delta R.T.: 0.009 min  
 Response: 375228  
 Conc: 267.82 ng/ml



#25 AR-1248-5

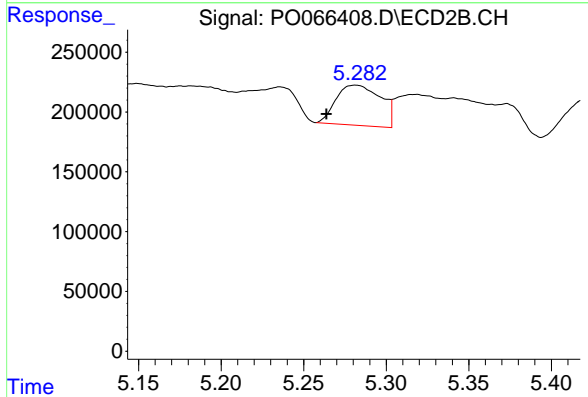
R.T.: 5.318 min  
 Delta R.T.: 0.014 min  
 Response: 531598  
 Conc: 298.97 ng/ml



#26 AR-1254-1

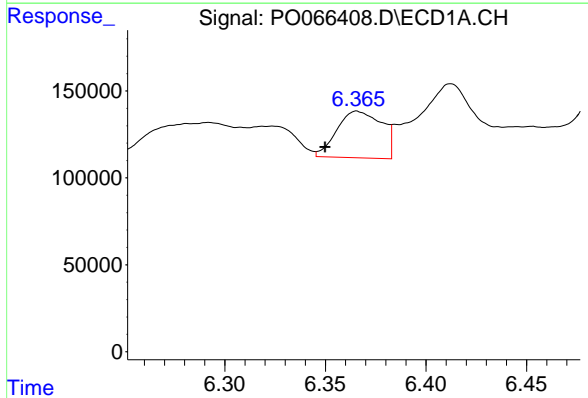
R.T.: 6.143 min  
 Delta R.T.: 0.010 min  
 Response: 184409  
 Conc: 126.79 ng/ml

**Instrument :**  
 ECD\_O  
**ClientSampleId :**  
 HAM-SB-BC-0-5RE



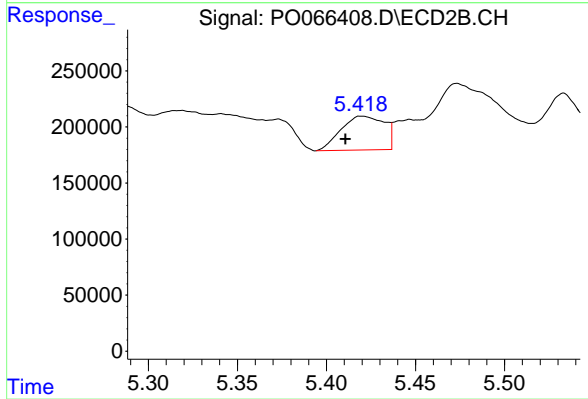
#26 AR-1254-1

R.T.: 5.282 min  
 Delta R.T.: 0.018 min  
 Response: 633357  
 Conc: 227.05 ng/ml



#27 AR-1254-2

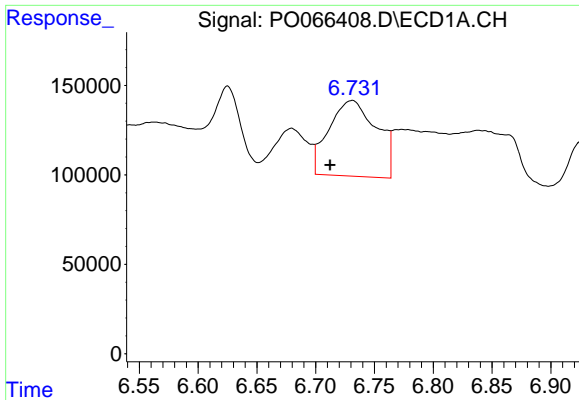
R.T.: 6.366 min  
 Delta R.T.: 0.016 min  
 Response: 417705  
 Conc: 170.09 ng/ml



#27 AR-1254-2

R.T.: 5.420 min  
 Delta R.T.: 0.009 min  
 Response: 512775  
 Conc: 196.35 ng/ml

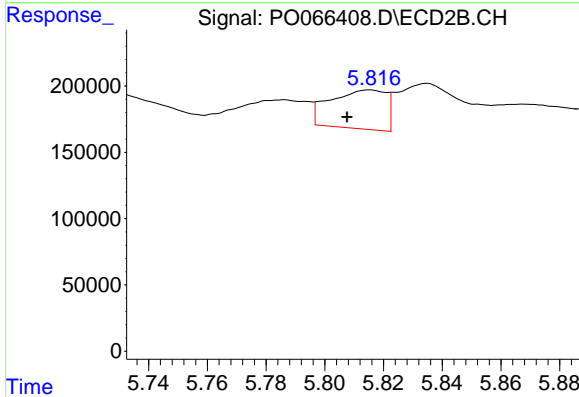




#28 AR-1254-3

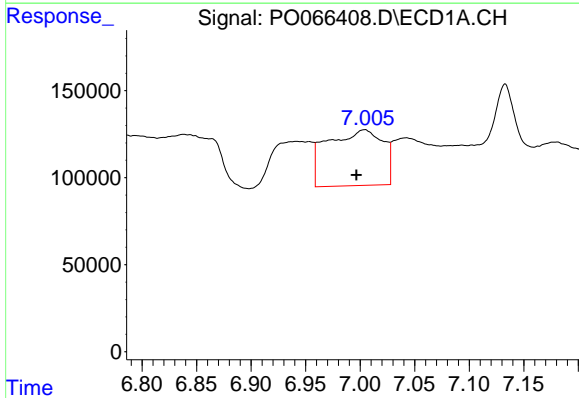
R.T.: 6.731 min  
 Delta R.T.: 0.019 min  
 Response: 1196491  
 Conc: 444.32 ng/ml

**Instrument :**  
 ECD\_O  
**ClientSampleId :**  
 HAM-SB-BC-0-5RE



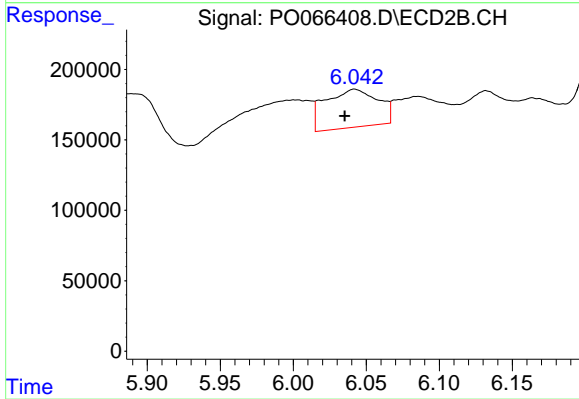
#28 AR-1254-3

R.T.: 5.815 min  
 Delta R.T.: 0.008 min  
 Response: 387408  
 Conc: 90.98 ng/ml



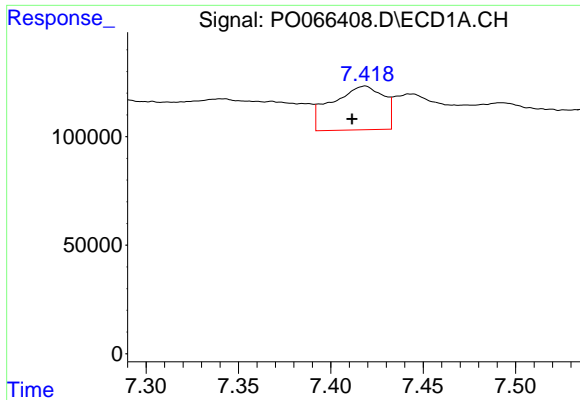
#29 AR-1254-4

R.T.: 7.004 min  
 Delta R.T.: 0.007 min  
 Response: 1138068  
 Conc: 492.94 ng/ml



#29 AR-1254-4

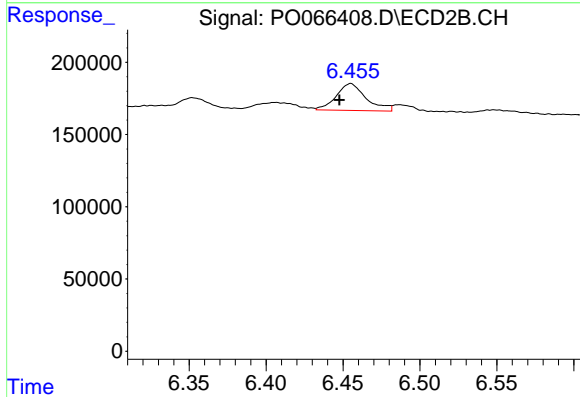
R.T.: 6.042 min  
 Delta R.T.: 0.007 min  
 Response: 677772  
 Conc: 221.17 ng/ml



#30 AR-1254-5

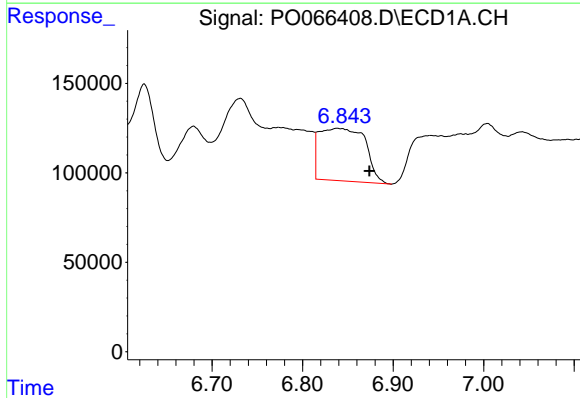
R.T.: 7.418 min  
 Delta R.T.: 0.007 min  
 Response: 391627  
 Conc: 166.66 ng/ml

**Instrument :**  
 ECD\_O  
**ClientSampleId :**  
 HAM-SB-BC-0-5RE



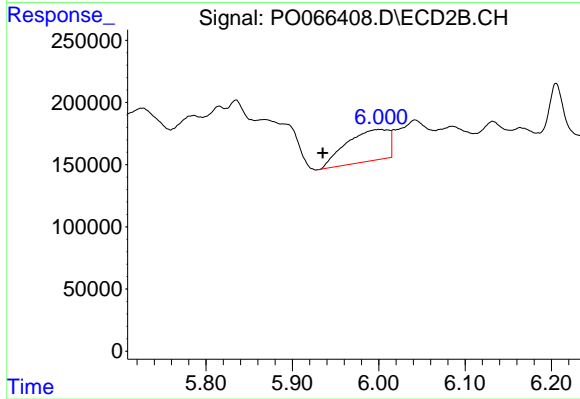
#30 AR-1254-5

R.T.: 6.455 min  
 Delta R.T.: 0.007 min  
 Response: 250921  
 Conc: 57.05 ng/ml



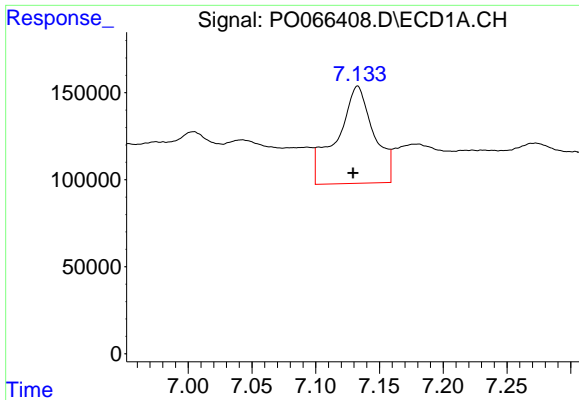
#31 AR-1260-1

R.T.: 6.838 min  
 Delta R.T.: -0.036 min  
 Response: 1034160  
 Conc: 485.95 ng/ml



#31 AR-1260-1

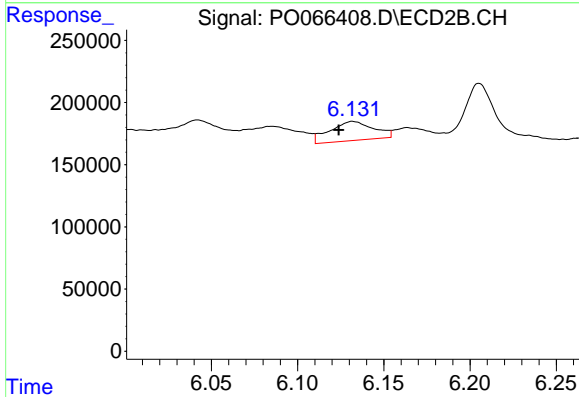
R.T.: 6.002 min  
 Delta R.T.: 0.067 min  
 Response: 865854  
 Conc: 261.67 ng/ml



#32 AR-1260-2

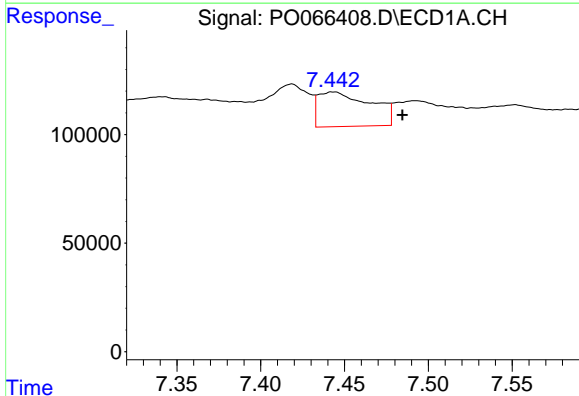
R.T.: 7.133 min  
 Delta R.T.: 0.004 min  
 Response: 1123697  
 Conc: 365.43 ng/ml

Instrument :  
 ECD\_O  
 ClientSampleId :  
 HAM-SB-BC-0-5RE



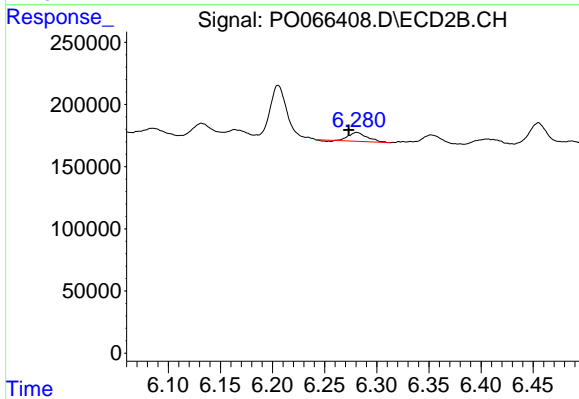
#32 AR-1260-2

R.T.: 6.132 min  
 Delta R.T.: 0.008 min  
 Response: 271152  
 Conc: 52.72 ng/ml



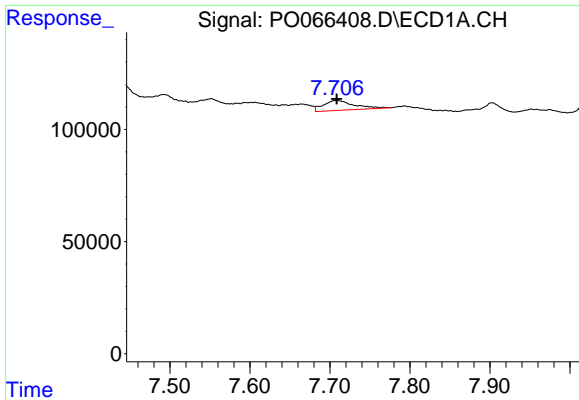
#33 AR-1260-3

R.T.: 7.443 min  
 Delta R.T.: -0.041 min  
 Response: 347370  
 Conc: 131.70 ng/ml



#33 AR-1260-3

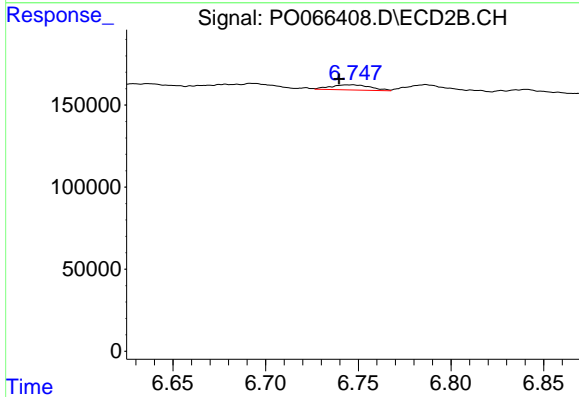
R.T.: 6.281 min  
 Delta R.T.: 0.008 min  
 Response: 86355  
 Conc: 22.03 ng/ml



#34 AR-1260-4

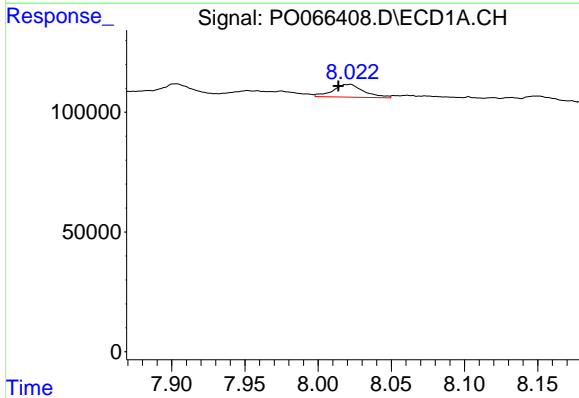
R.T.: 7.707 min  
 Delta R.T.: -0.002 min  
 Response: 119242  
 Conc: 47.88 ng/ml

**Instrument :**  
 ECD\_O  
**ClientSampleId :**  
 HAM-SB-BC-0-5RE



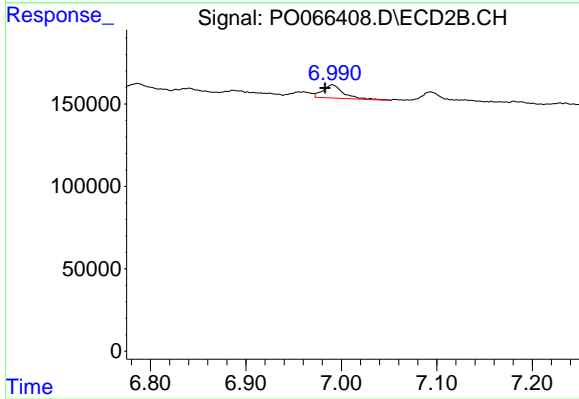
#34 AR-1260-4

R.T.: 6.746 min  
 Delta R.T.: 0.007 min  
 Response: 46384  
 Conc: 12.80 ng/ml



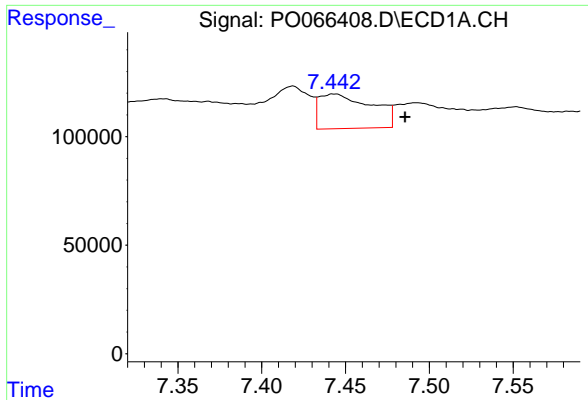
#35 AR-1260-5

R.T.: 8.021 min  
 Delta R.T.: 0.007 min  
 Response: 77335  
 Conc: 13.72 ng/ml



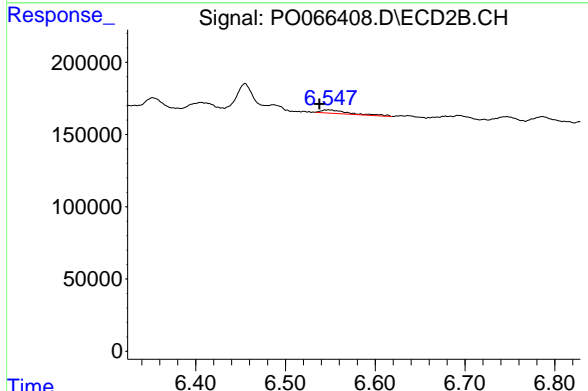
#35 AR-1260-5

R.T.: 6.991 min  
 Delta R.T.: 0.008 min  
 Response: 121139  
 Conc: 12.60 ng/ml

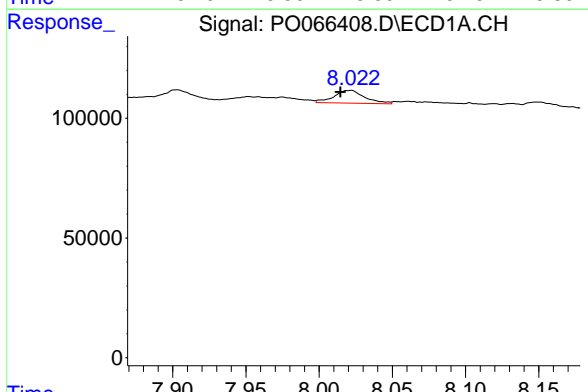


#36 AR-1262-1  
 R.T.: 7.443 min  
 Delta R.T.: -0.042 min  
 Response: 347370  
 Conc: 100.56 ng/ml

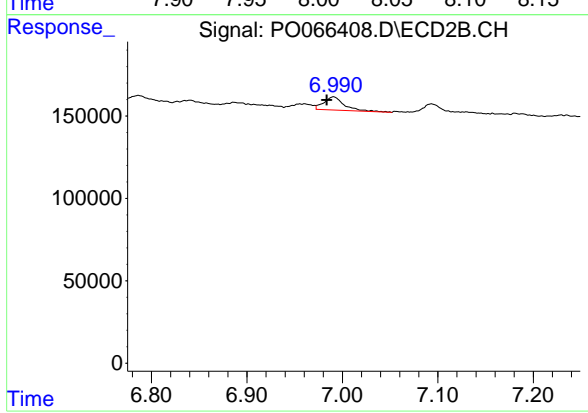
**Instrument :**  
 ECD\_O  
**ClientSampleId :**  
 HAM-SB-BC-0-5RE



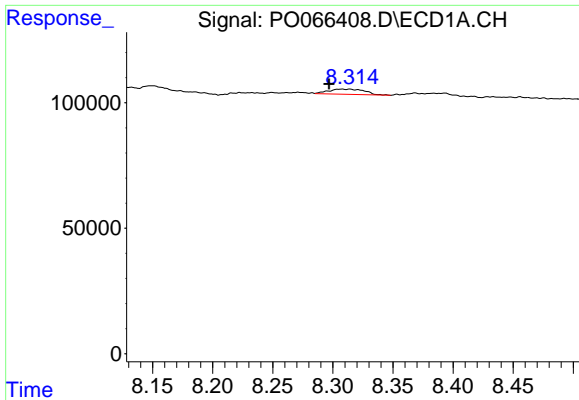
#36 AR-1262-1  
 R.T.: 6.548 min  
 Delta R.T.: 0.011 min  
 Response: 52139  
 Conc: 21.80 ng/ml



#37 AR-1262-2  
 R.T.: 8.021 min  
 Delta R.T.: 0.007 min  
 Response: 77335  
 Conc: 13.36 ng/ml



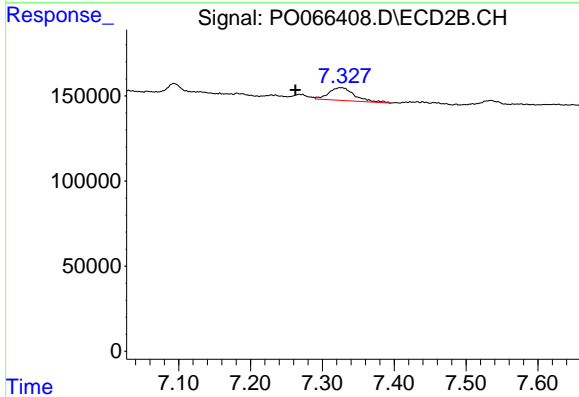
#37 AR-1262-2  
 R.T.: 6.991 min  
 Delta R.T.: 0.007 min  
 Response: 121139  
 Conc: 12.14 ng/ml



#38 AR-1262-3

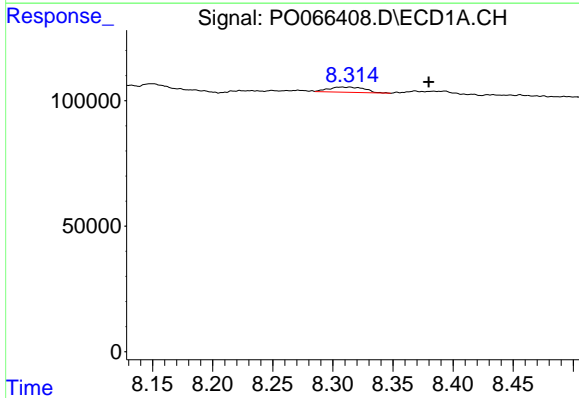
R.T.: 8.314 min  
 Delta R.T.: 0.017 min  
 Response: 43703  
 Conc: 11.86 ng/ml

**Instrument :**  
 ECD\_O  
**ClientSampleId :**  
 HAM-SB-BC-0-5RE



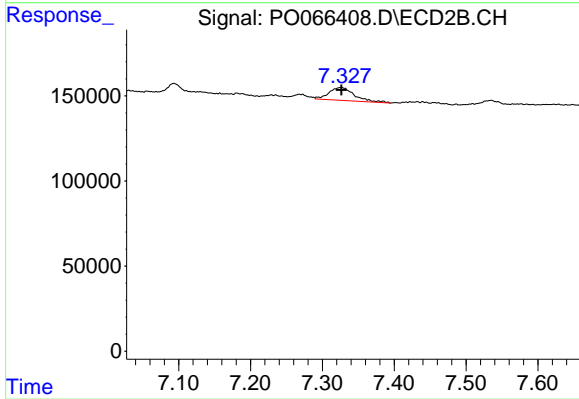
#38 AR-1262-3

R.T.: 7.325 min  
 Delta R.T.: 0.063 min  
 Response: 187328  
 Conc: 48.91 ng/ml



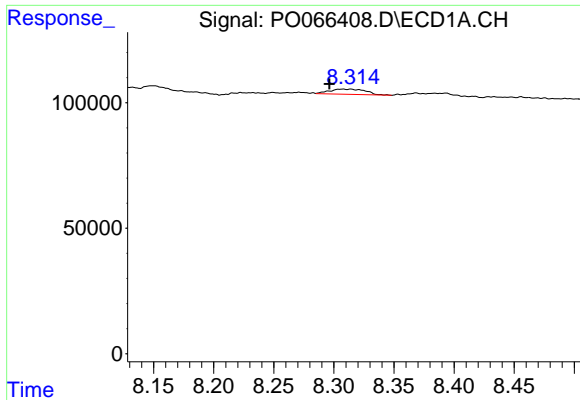
#39 AR-1262-4

R.T.: 8.314 min  
 Delta R.T.: -0.066 min  
 Response: 43703  
 Conc: 15.71 ng/ml



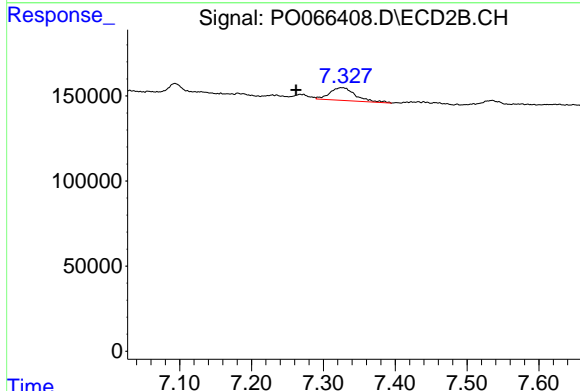
#39 AR-1262-4

R.T.: 7.325 min  
 Delta R.T.: -0.001 min  
 Response: 187328  
 Conc: 29.27 ng/ml

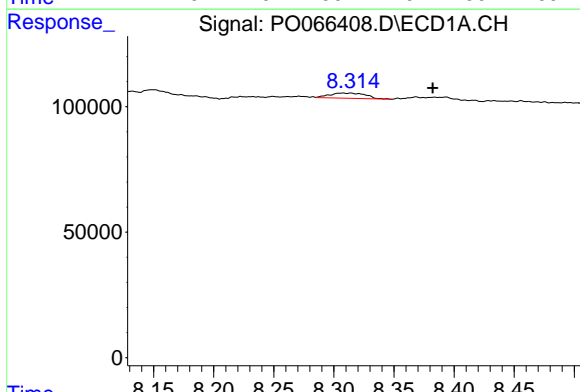


#41 AR-1268-1  
 R.T.: 8.314 min  
 Delta R.T.: 0.018 min  
 Response: 43703  
 Conc: 5.93 ng/ml

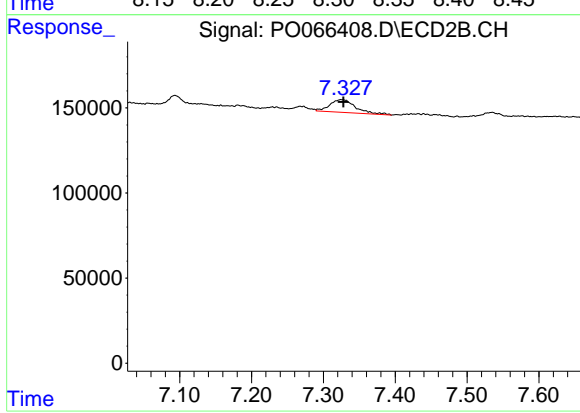
Instrument :  
 ECD\_O  
 ClientSampleId :  
 HAM-SB-BC-0-5RE



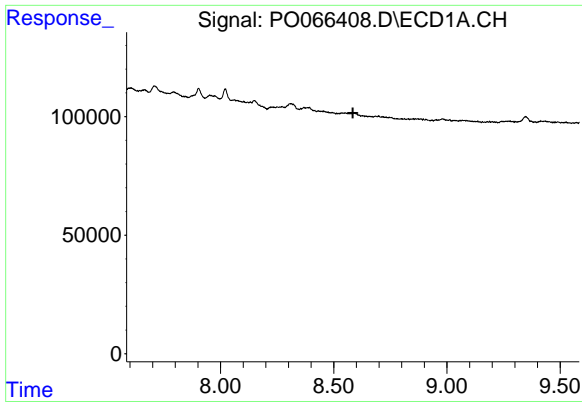
#41 AR-1268-1  
 R.T.: 7.325 min  
 Delta R.T.: 0.063 min  
 Response: 187328  
 Conc: 15.06 ng/ml



#42 AR-1268-2  
 R.T.: 8.314 min  
 Delta R.T.: -0.068 min  
 Response: 43703  
 Conc: 7.02 ng/ml



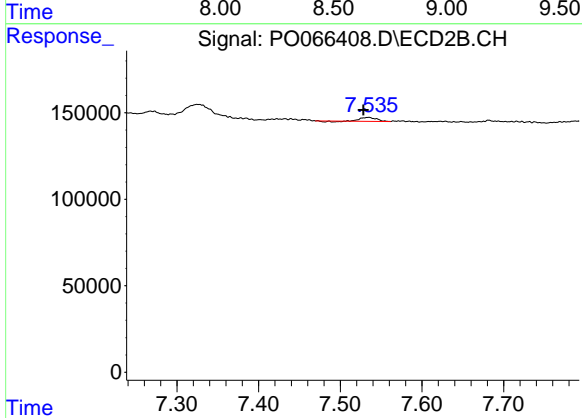
#42 AR-1268-2  
 R.T.: 7.325 min  
 Delta R.T.: -0.002 min  
 Response: 187328  
 Conc: 17.75 ng/ml



#43 AR-1268-3

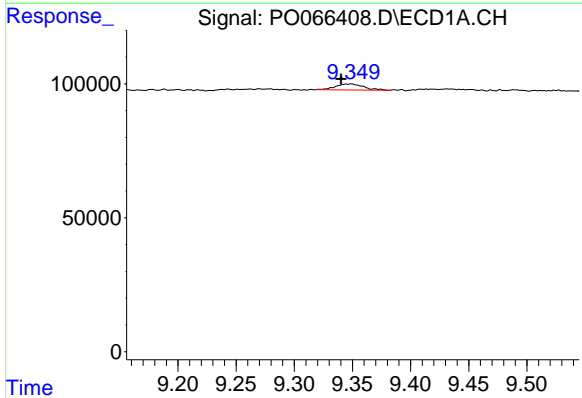
R.T.: 0.000 min  
 Exp R.T.: 8.585 min  
 Response: 0  
 Conc: N.D.

Instrument :  
 ECD\_O  
 ClientSampleId :  
 HAM-SB-BC-0-5RE



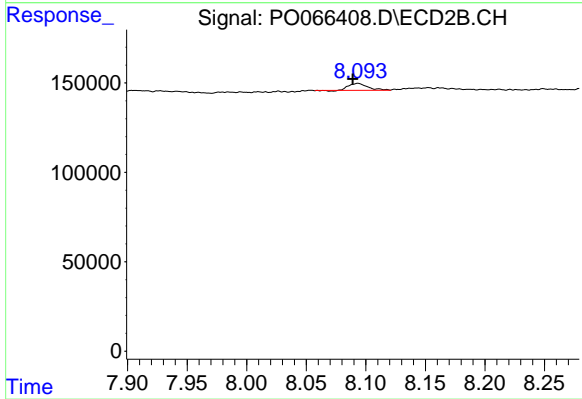
#43 AR-1268-3

R.T.: 7.535 min  
 Delta R.T.: 0.007 min  
 Response: 26733  
 Conc: 3.05 ng/ml



#45 AR-1268-5

R.T.: 9.349 min  
 Delta R.T.: 0.009 min  
 Response: 37973  
 Conc: 2.44 ng/ml



#45 AR-1268-5

R.T.: 8.094 min  
 Delta R.T.: 0.005 min  
 Response: 42982  
 Conc: 1.82 ng/ml