

Data Path : P:\HPCHEM1\ECD O\Data\PO021318\  
 Data File : PO042380.D  
 Signal(s) : Signal #1: ECD1A.CH Signal #2: ECD2B.CH  
 Acq On : 12 Feb 2018 13:13  
 Operator : SM/UA  
 Sample : AR1660CCC500  
 Misc :  
 ALS Vial : 3 Sample Multiplier: 1

**Instrument :**  
 ECD\_O  
**ClientSampleId :**  
 AR1660CCC500

**Manual Integrations**  
**APPROVED**  
 ugo  
 2/13/2018 8:30:52 AM

Integration File signal 1: autoint1.e  
 Integration File signal 2: autoint2.e  
 Quant Time: Feb 13 06:00:24 2018  
 Quant Method : P:\HPCHEM1\ECD\_O\PO021218.M  
 Quant Title : GC EXTRACTABLES  
 QLast Update : Fri Feb 09 22:50:36 2018  
 Response via : Initial Calibration  
 Integrator: ChemStation 6890 Scale Mode: Small noise peaks clipped

Volume Inj. : 2 µl  
 Signal #1 Phase : ZB-MR1 Signal #2 Phase: ZB-MR2  
 Signal #1 Info : 30Mx0.32mmx 0.50µ Signal #2 Info : 30M x 0.32mm x 0.25µm

Compound	RT#1	RT#2	Resp#1	Resp#2	nq/ml	nq/ml
-----						
System Monitoring Compounds						
1) SA Tetrachlo...	4.112	3.355	9288156	13018045	49.327	45.316
2) SA Decachlor...	9.498	8.145	9951987	13439819	51.455	49.768
Target Compounds						
3) L1 AR-1016-1	4.978	4.176	2753998	3928215	496.805	448.427
4) L1 AR-1016-2	5.319	4.613	3720739	3493793	481.901	445.287
5) L1 AR-1016-3	5.414	4.653	3205221	4420279	508.389	455.387
6) L1 AR-1016-4	5.700	4.816	3068973	4810059	501.572m	462.809m
7) L1 AR-1016-5	5.837	5.155	3069578	5241834	490.285	507.663
31) L7 AR-1260-1	6.798	5.811	6218439	9800699	493.498	438.733
32) L7 AR-1260-2	7.050	5.998	7875624	15505884	481.101	510.331
33) L7 AR-1260-3	7.325	6.143	9338744	12252775	505.657	480.740
34) L7 AR-1260-4	7.403	6.314	6719571	14363890	507.581	486.609
35) L7 AR-1260-5	7.924	6.844	12299295	27425129	422.702	524.597
-----						

(f)=RT Delta > 1/2 Window (#)=Amounts differ by > 25% (m)=manual int.

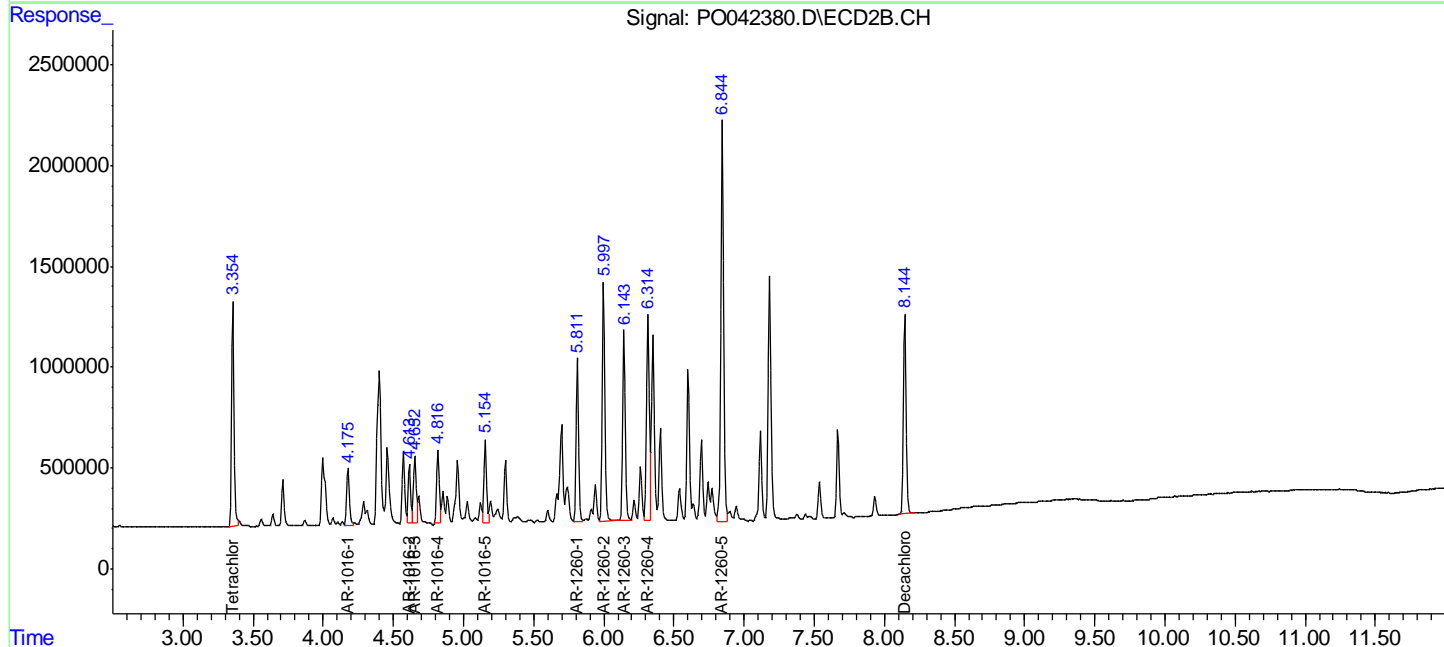
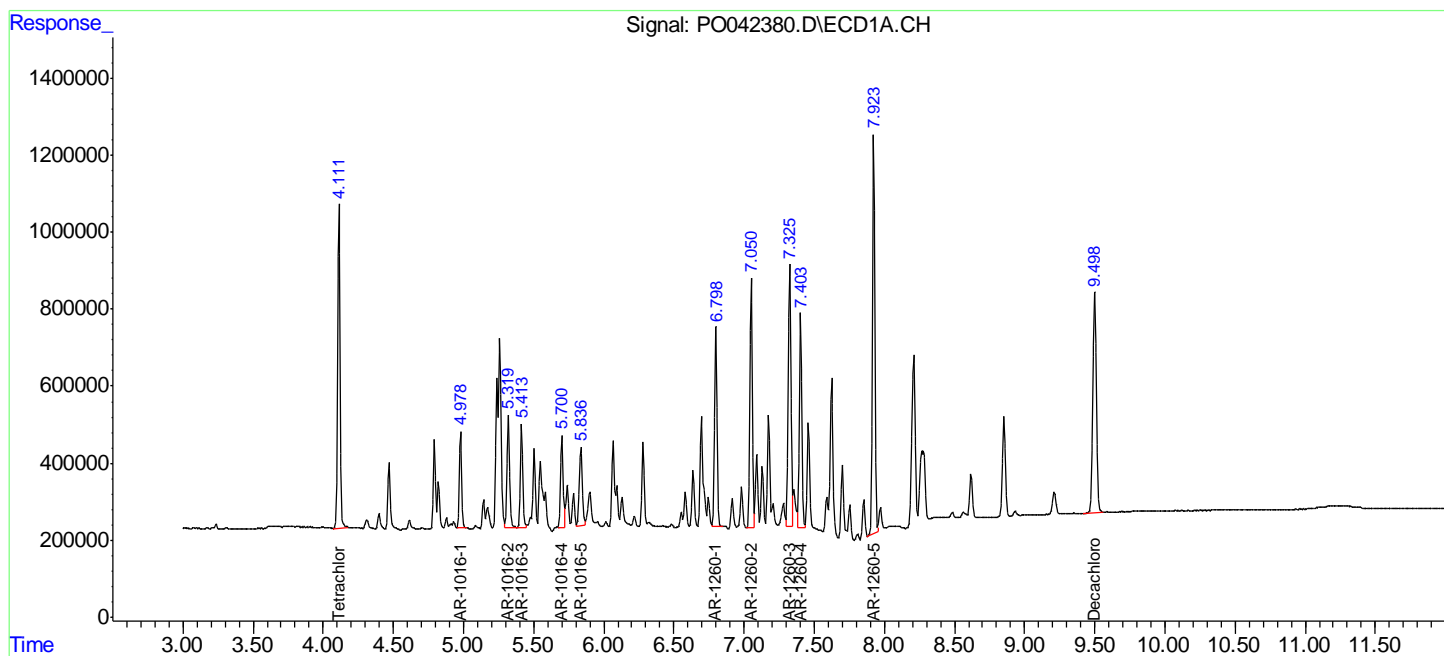
Data Path : P:\HPCHEM1\ECD O\Data\PO021318\  
 Data File : PO042380.D  
 Signal(s) : Signal #1: ECD1A.CH Signal #2: ECD2B.CH  
 Acq On : 12 Feb 2018 13:13  
 Operator : SM/UA  
 Sample : AR1660CCC500  
 Misc :  
 ALS Vial : 3 Sample Multiplier: 1

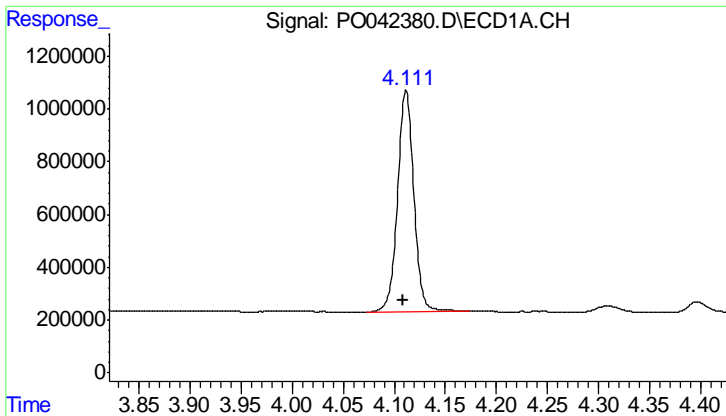
**Instrument :**  
 ECD\_O  
**Client Sampled :**  
 AR1660CCC500

**Manual Integrations**  
**APPROVED**  
 ugo  
 2/13/2018 8:30:52 AM

Integration File signal 1: autoint1.e  
 Integration File signal 2: autoint2.e  
 Quant Time: Feb 13 06:00:24 2018  
 Quant Method : P:\HPCHEM1\ECD\_O\PO021218.M  
 Quant Title : GC EXTRACTABLES  
 QLast Update : Fri Feb 09 22:50:36 2018  
 Response via : Initial Calibration  
 Integrator: ChemStation 6890 Scale Mode: Small noise peaks clipped

Volume Inj. : 2 µl  
 Signal #1 Phase : ZB-MR1 Signal #2 Phase: ZB-MR2  
 Signal #1 Info : 30Mx0.32mmx 0.50µ Signal #2 Info : 30M x 0.32mm x 0.25µm





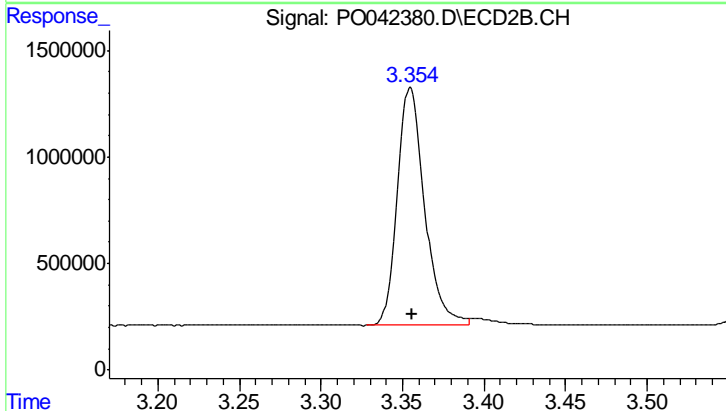
#1 Tetrachloro-m-xylene

R.T.: 4.112 min  
 Delta R.T.: 0.002 min  
 Response: 9288156  
 Conc: 49.33 ng/ml

Instrument :  
 ECD\_O  
 ClientSampleId :  
 AR1660CCC500

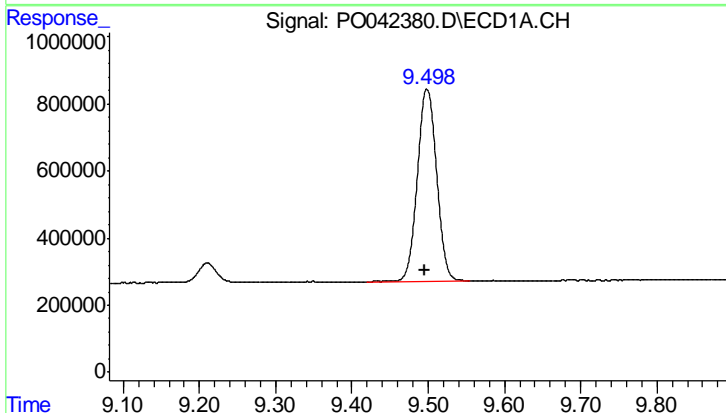
Manual Integrations  
 APPROVED

ugo  
 2/13/2018 8:30:52 AM



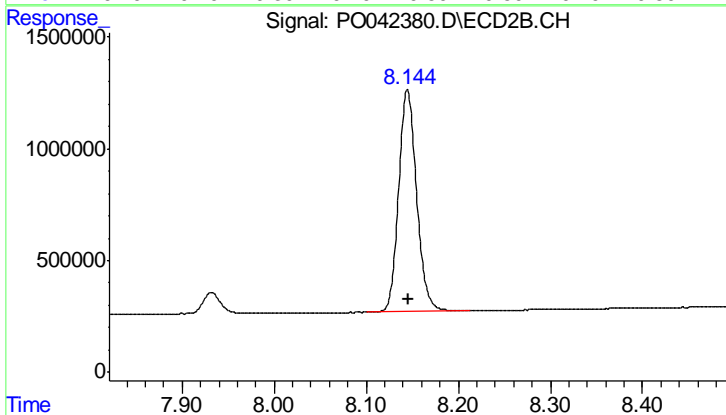
#1 Tetrachloro-m-xylene

R.T.: 3.355 min  
 Delta R.T.: -0.002 min  
 Response: 13018045  
 Conc: 45.32 ng/ml



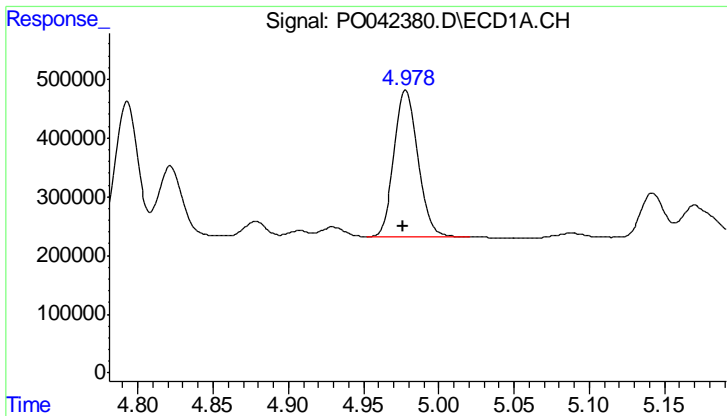
#2 Decachlorobiphenyl

R.T.: 9.498 min  
 Delta R.T.: 0.003 min  
 Response: 9951987  
 Conc: 51.46 ng/ml



#2 Decachlorobiphenyl

R.T.: 8.145 min  
 Delta R.T.: 0.000 min  
 Response: 13439819  
 Conc: 49.77 ng/ml



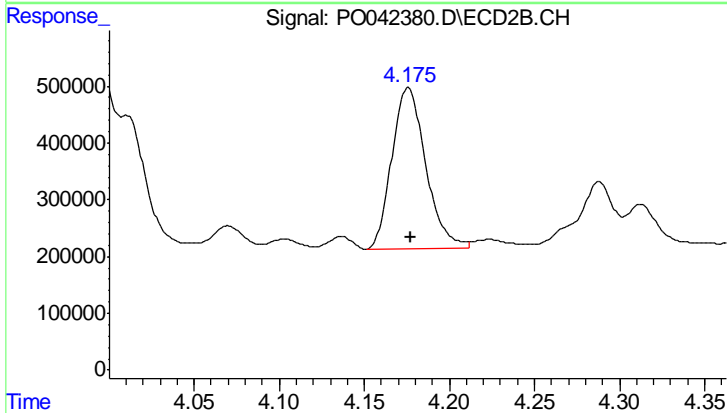
#3 AR-1016-1

R.T.: 4.978 min  
 Delta R.T.: 0.002 min  
 Response: 2753998  
 Conc: 496.80 ng/ml

Instrument :  
 ECD\_O  
 ClientSampled :  
 AR1660CCC500

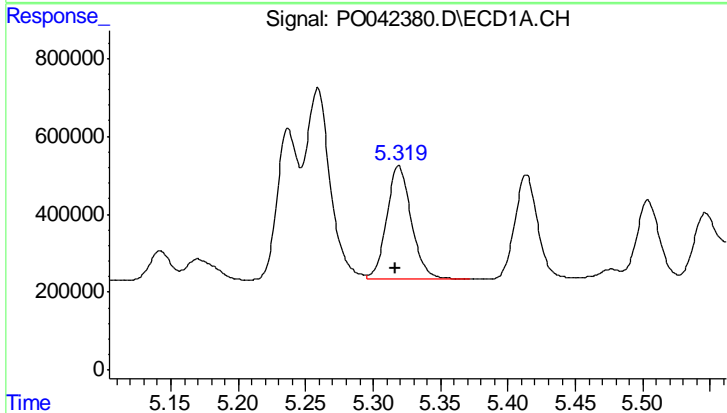
Manual Integrations  
 APPROVED

ugo  
 2/13/2018 8:30:52 AM



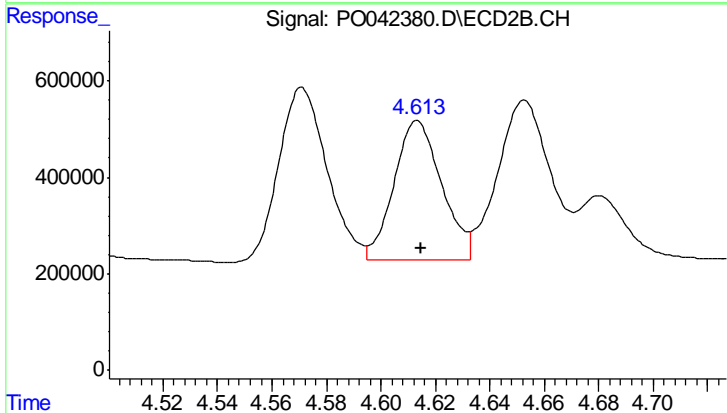
#3 AR-1016-1

R.T.: 4.176 min  
 Delta R.T.: -0.002 min  
 Response: 3928215  
 Conc: 448.43 ng/ml



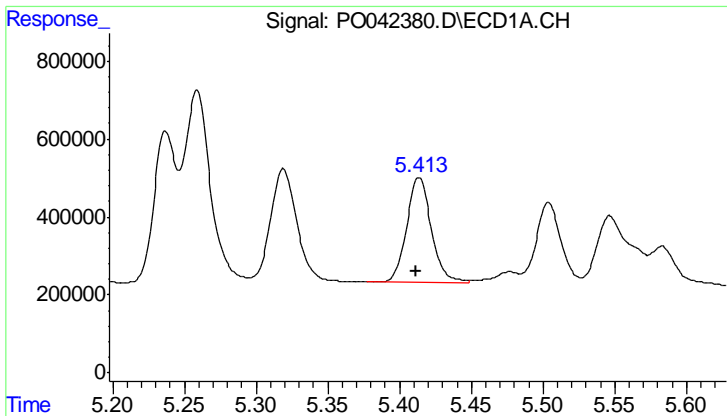
#4 AR-1016-2

R.T.: 5.319 min  
 Delta R.T.: 0.002 min  
 Response: 3720739  
 Conc: 481.90 ng/ml



#4 AR-1016-2

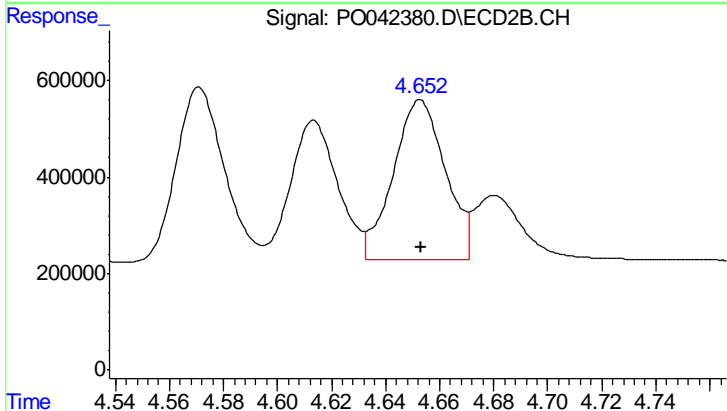
R.T.: 4.613 min  
 Delta R.T.: -0.001 min  
 Response: 3493793  
 Conc: 445.29 ng/ml



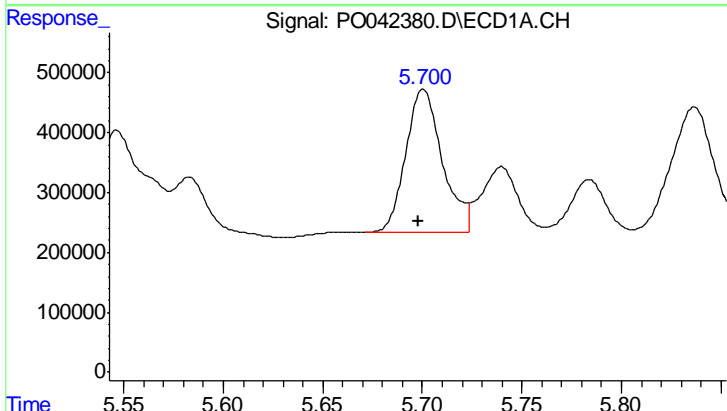
#5 AR-1016-3  
 R.T.: 5.414 min  
 Delta R.T.: 0.003 min  
 Response: 3205221  
 Conc: 508.39 ng/ml

**Instrument :**  
 ECD\_O  
**ClientSampled :**  
 AR1660CCC500

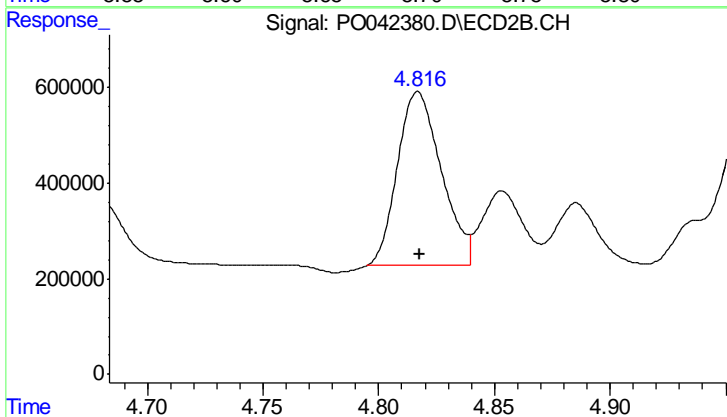
**Manual Integrations**  
**APPROVED**  
 ugo  
 2/13/2018 8:30:52 AM



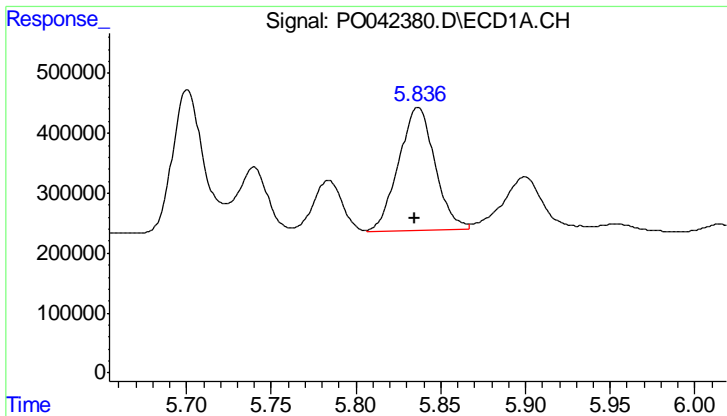
#5 AR-1016-3  
 R.T.: 4.653 min  
 Delta R.T.: 0.000 min  
 Response: 4420279  
 Conc: 455.39 ng/ml



#6 AR-1016-4  
 R.T.: 5.700 min  
 Delta R.T.: 0.002 min  
 Response: 3068973  
 Conc: 501.57 ng/ml m



#6 AR-1016-4  
 R.T.: 4.816 min  
 Delta R.T.: -0.001 min  
 Response: 4810059  
 Conc: 462.81 ng/ml m



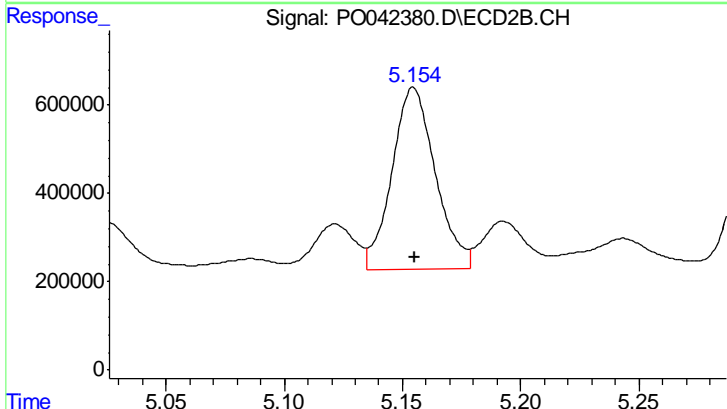
#7 AR-1016-5

R.T.: 5.837 min  
 Delta R.T.: 0.002 min  
 Response: 3069578  
 Conc: 490.29 ng/ml

Instrument :  
 ECD\_O  
 ClientSampled :  
 AR1660CCC500

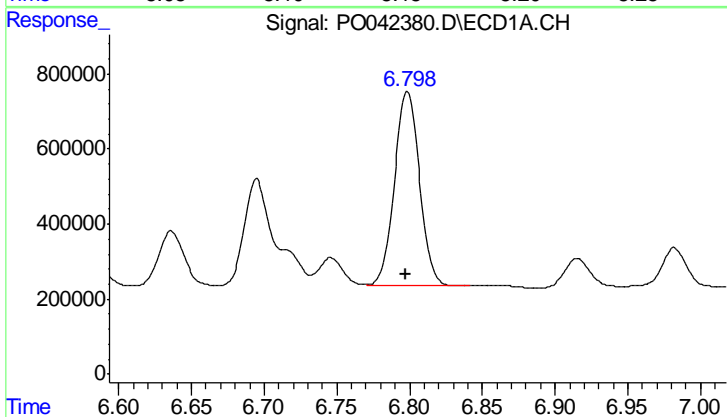
Manual Integrations  
 APPROVED

ugo  
 2/13/2018 8:30:52 AM



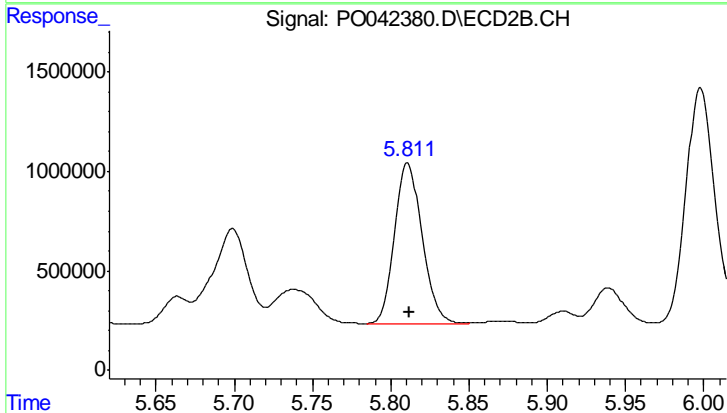
#7 AR-1016-5

R.T.: 5.155 min  
 Delta R.T.: 0.000 min  
 Response: 5241834  
 Conc: 507.66 ng/ml



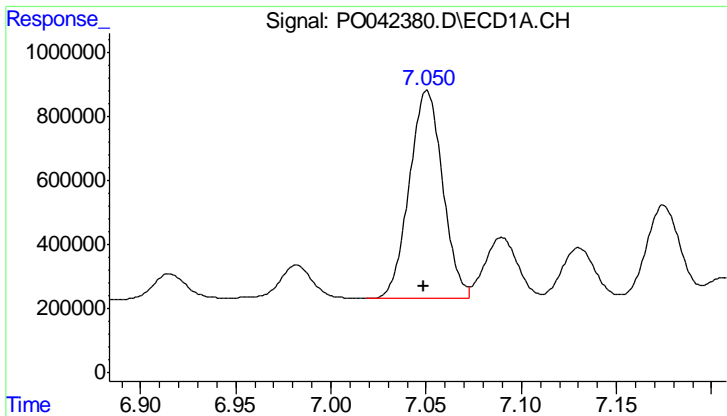
#31 AR-1260-1

R.T.: 6.798 min  
 Delta R.T.: 0.002 min  
 Response: 6218439  
 Conc: 493.50 ng/ml



#31 AR-1260-1

R.T.: 5.811 min  
 Delta R.T.: -0.001 min  
 Response: 9800699  
 Conc: 438.73 ng/ml



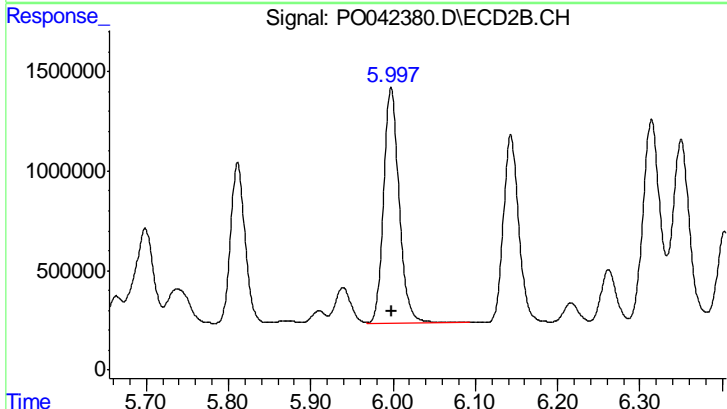
#32 AR-1260-2

R.T.: 7.050 min  
 Delta R.T.: 0.002 min  
 Response: 7875624  
 Conc: 481.10 ng/ml

Instrument :  
 ECD\_O  
 ClientSampled :  
 AR1660CCC500

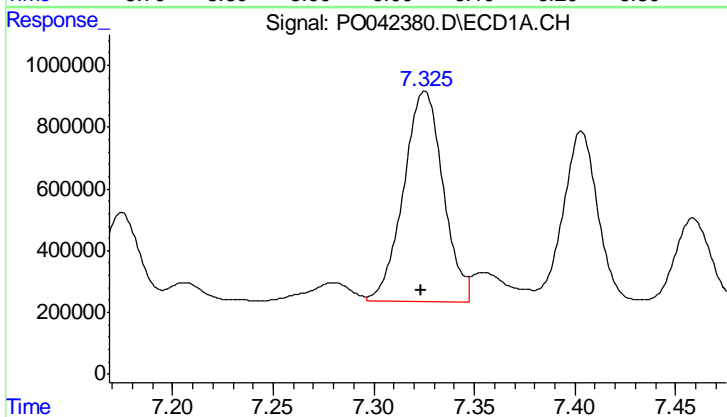
Manual Integrations  
 APPROVED

ugo  
 2/13/2018 8:30:52 AM



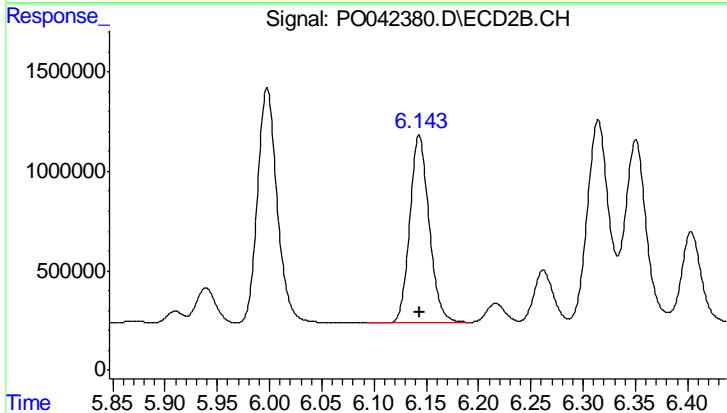
#32 AR-1260-2

R.T.: 5.998 min  
 Delta R.T.: 0.000 min  
 Response: 15505884  
 Conc: 510.33 ng/ml



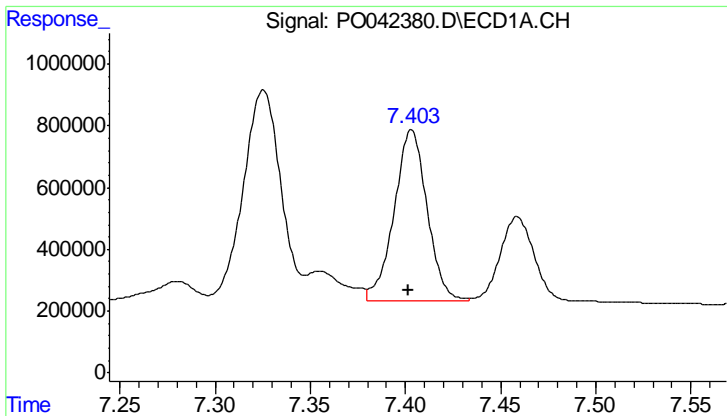
#33 AR-1260-3

R.T.: 7.325 min  
 Delta R.T.: 0.002 min  
 Response: 9338744  
 Conc: 505.66 ng/ml



#33 AR-1260-3

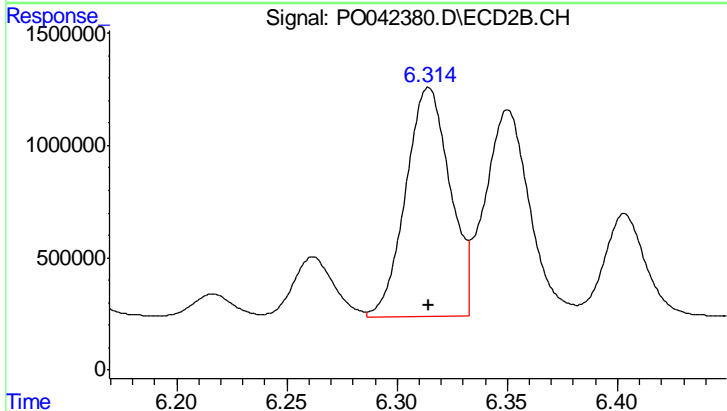
R.T.: 6.143 min  
 Delta R.T.: 0.000 min  
 Response: 12252775  
 Conc: 480.74 ng/ml



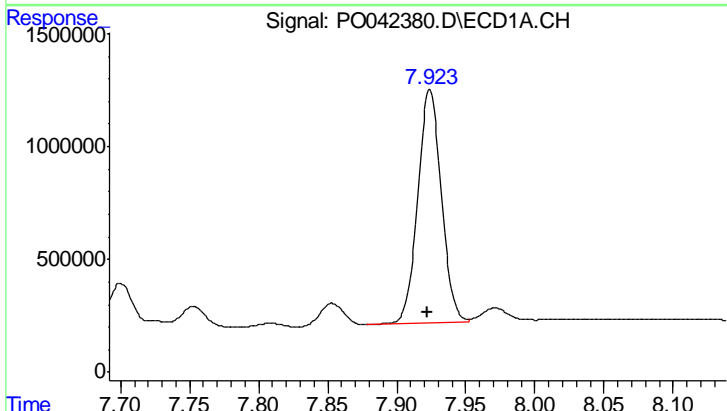
#34 AR-1260-4  
 R.T.: 7.403 min  
 Delta R.T.: 0.001 min  
 Response: 6719571  
 Conc: 507.58 ng/ml

**Instrument :**  
 ECD\_O  
**ClientSampled :**  
 AR1660CCC500

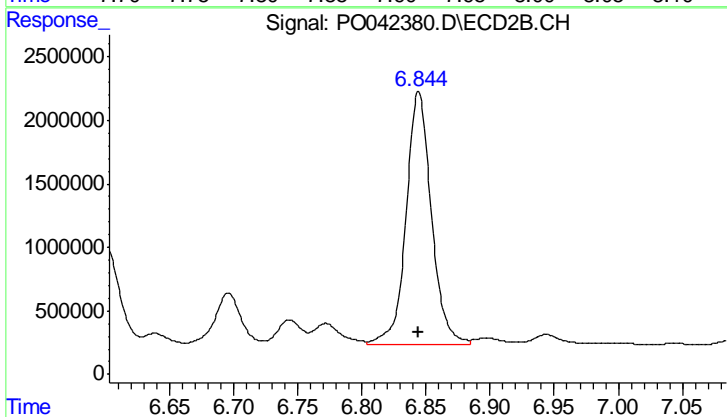
**Manual Integrations**  
**APPROVED**  
 ugo  
 2/13/2018 8:30:52 AM



#34 AR-1260-4  
 R.T.: 6.314 min  
 Delta R.T.: 0.000 min  
 Response: 14363890  
 Conc: 486.61 ng/ml



#35 AR-1260-5  
 R.T.: 7.924 min  
 Delta R.T.: 0.002 min  
 Response: 12299295  
 Conc: 422.70 ng/ml



#35 AR-1260-5  
 R.T.: 6.844 min  
 Delta R.T.: 0.000 min  
 Response: 27425129  
 Conc: 524.60 ng/ml