

Data Path : P:\HPCHEM1\ECD O\Data\PO021418\  
 Data File : PO042394.D  
 Signal(s) : Signal #1: ECD1A.CH Signal #2: ECD2B.CH  
 Acq On : 14 Feb 2018 10:23  
 Operator : SM/UA  
 Sample : AR1660ICC050  
 Misc :  
 ALS Vial : 7 Sample Multiplier: 1

**Instrument :**  
 ECD\_O  
**ClientSampleId :**  
 AR1660ICC050

**Manual Integrations**  
**APPROVED**  
 ugo  
 2/16/2018 2:48:29 PM

Integration File signal 1: autoint1.e  
 Integration File signal 2: autoint2.e  
 Quant Time: Feb 14 12:07:01 2018  
 Quant Method : P:\HPCHEM1\ECD\_O\PO021418.M  
 Quant Title : GC EXTRACTABLES  
 QLast Update : Wed Feb 14 11:59:37 2018  
 Response via : Initial Calibration  
 Integrator: ChemStation 6890 Scale Mode: Small noise peaks clipped

Volume Inj. : 2 µl  
 Signal #1 Phase : ZB-MR1 Signal #2 Phase: ZB-MR2  
 Signal #1 Info : 30Mx0.32mmx 0.50µ Signal #2 Info : 30M x 0.32mm x 0.25µm

Compound	RT#1	RT#2	Resp#1	Resp#2	nq/ml	nq/ml
-----						
System Monitoring Compounds						
1) SA Tetrachlo...	4.107	3.354	785566	1125521	5.078	4.956
2) SA Decachlor...	9.493	8.143	901911	1255410	5.247	4.996
Target Compounds						
3) L1 AR-1016-1	4.974	4.176	233157	325362	50.037m	48.351
4) L1 AR-1016-2	5.314	4.612	303559	277898	48.569m	48.643m
5) L1 AR-1016-3	5.409	4.651	272149	377608	49.873m	51.740m
6) L1 AR-1016-4	5.695	4.816	263522	385208	49.807m	48.877m
7) L1 AR-1016-5	5.833	5.152	242479	363125	43.151m	45.866
31) L7 AR-1260-1	6.795	5.810	596107	959463	53.663	51.249
32) L7 AR-1260-2	7.047	5.994	774406	1822488	51.972	64.149m
33) L7 AR-1260-3	7.321	6.141	811669	1138569	49.163m	51.608
34) L7 AR-1260-4	7.399	6.313	578961	1344684	48.749	51.637
35) L7 AR-1260-5	7.920	6.843	1287940	2382173	50.170	48.652
-----						

(f)=RT Delta > 1/2 Window (#)=Amounts differ by > 25% (m)=manual int.

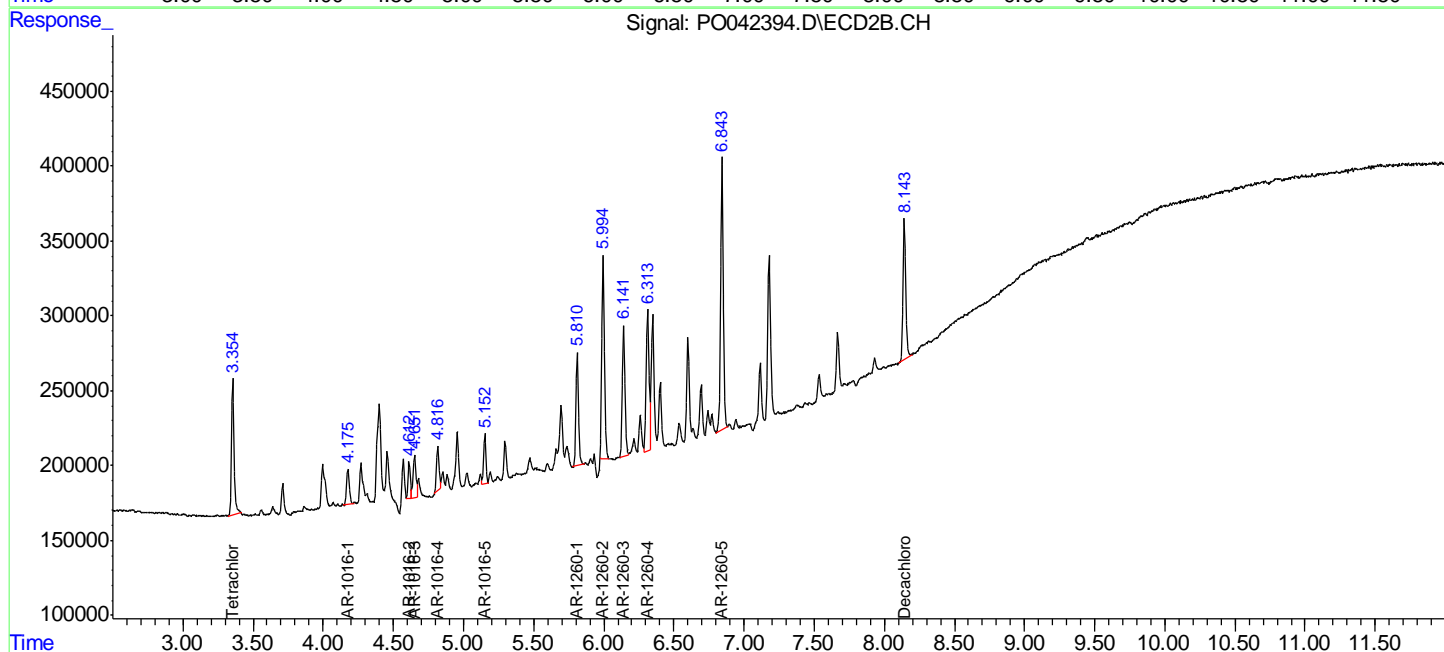
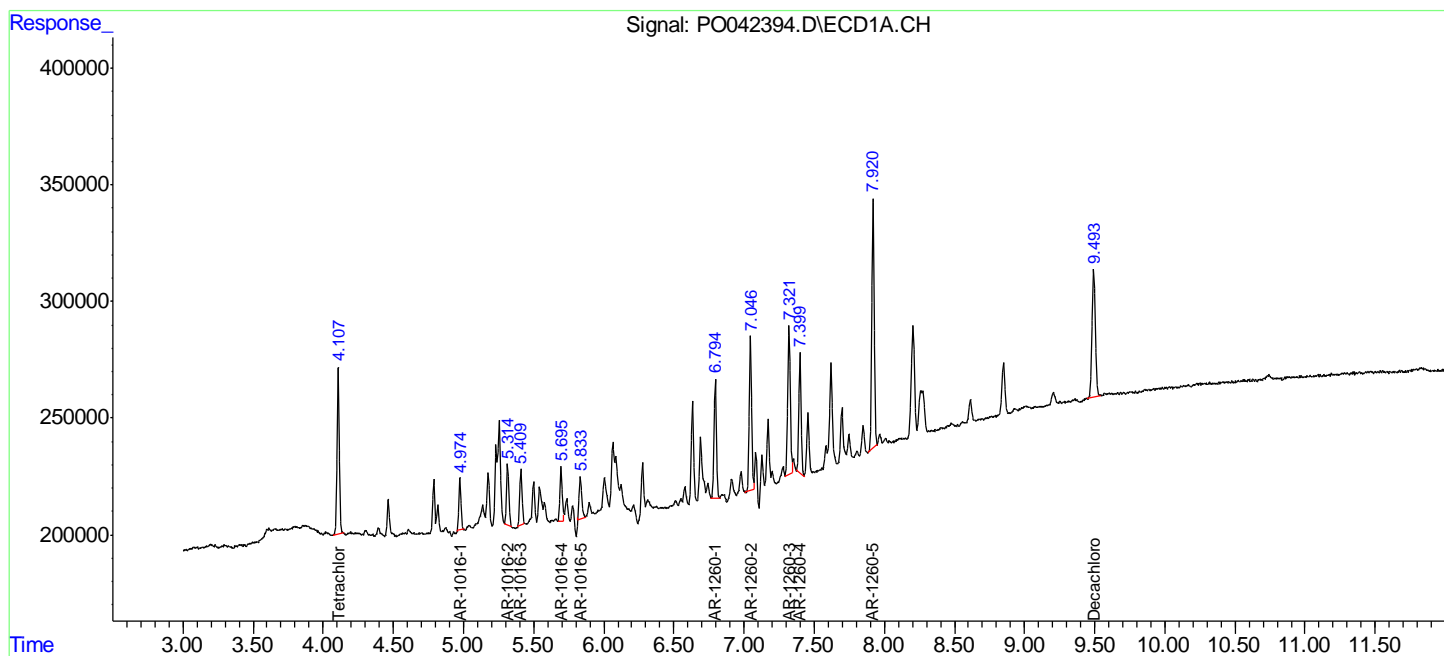
Data Path : P:\HPCHEM1\ECD O\Data\PO021418\  
 Data File : PO042394.D  
 Signal(s) : Signal #1: ECD1A.CH Signal #2: ECD2B.CH  
 Acq On : 14 Feb 2018 10:23  
 Operator : SM/UA  
 Sample : AR1660ICC050  
 Misc :  
 ALS Vial : 7 Sample Multiplier: 1

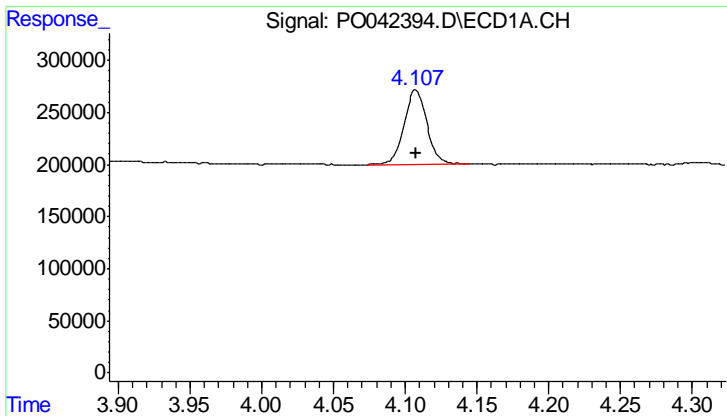
**Instrument :**  
 ECD\_O  
**Client Sampled :**  
 AR1660ICC050

**Manual Integrations**  
**APPROVED**  
 ugo  
 2/16/2018 2:48:29 PM

Integration File signal 1: autoint1.e  
 Integration File signal 2: autoint2.e  
 Quant Time: Feb 14 12:07:01 2018  
 Quant Method : P:\HPCHEM1\ECD\_O\PO021418.M  
 Quant Title : GC EXTRACTABLES  
 QLast Update : Wed Feb 14 11:59:37 2018  
 Response via : Initial Calibration  
 Integrator: ChemStation 6890 Scale Mode: Small noise peaks clipped

Volume Inj. : 2 µl  
 Signal #1 Phase : ZB-MR1 Signal #2 Phase: ZB-MR2  
 Signal #1 Info : 30Mx0.32mmx 0.50µ Signal #2 Info : 30M x 0.32mm x 0.25µm





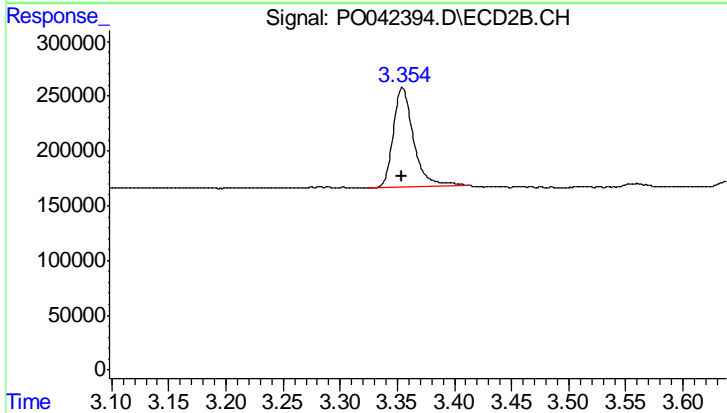
#1 Tetrachloro-m-xylene

R.T.: 4.107 min  
 Delta R.T.: 0.000 min  
 Response: 785566  
 Conc: 5.08 ng/ml

Instrument :  
 ECD\_O  
 ClientSampleId :  
 AR1660ICC050

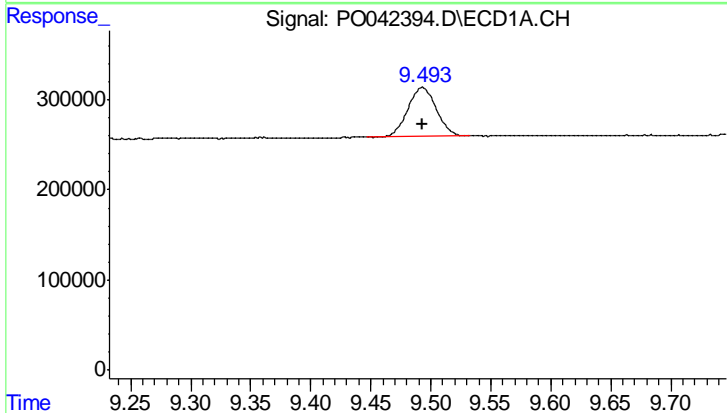
Manual Integrations  
 APPROVED

ugo  
 2/16/2018 2:48:29 PM



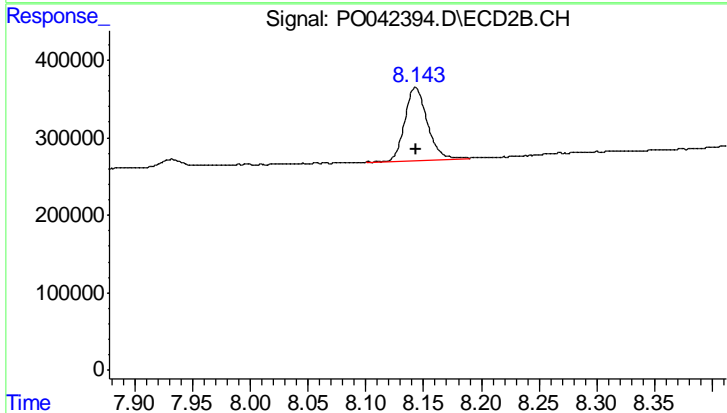
#1 Tetrachloro-m-xylene

R.T.: 3.354 min  
 Delta R.T.: 0.000 min  
 Response: 1125521  
 Conc: 4.96 ng/ml



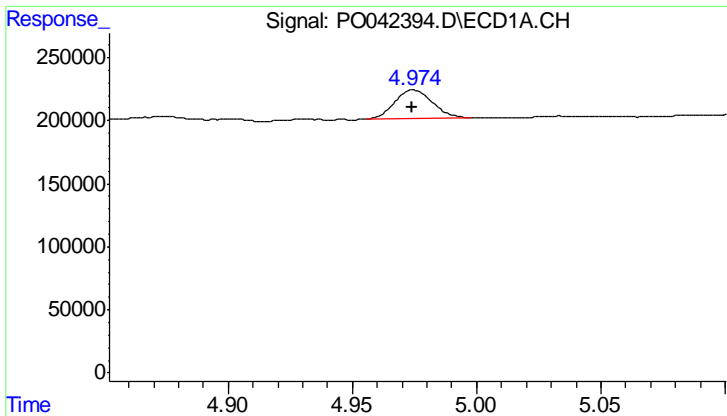
#2 Decachlorobiphenyl

R.T.: 9.493 min  
 Delta R.T.: 0.000 min  
 Response: 901911  
 Conc: 5.25 ng/ml



#2 Decachlorobiphenyl

R.T.: 8.143 min  
 Delta R.T.: 0.000 min  
 Response: 1255410  
 Conc: 5.00 ng/ml



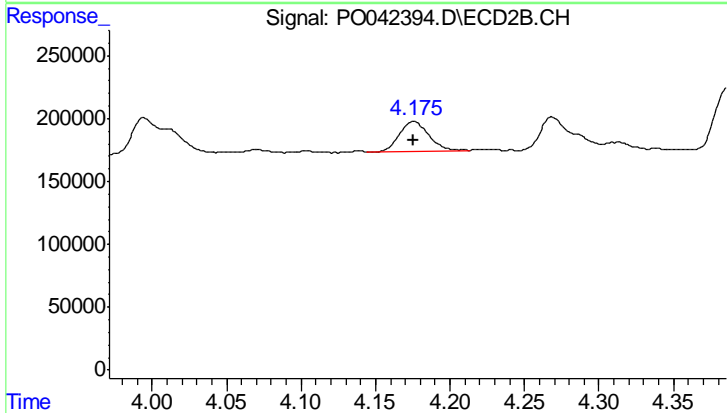
#3 AR-1016-1

R.T.: 4.974 min  
 Delta R.T.: 0.000 min  
 Response: 233157  
 Conc: 50.04 ng/ml

Instrument :  
 ECD\_O  
 ClientSampled :  
 AR1660ICC050

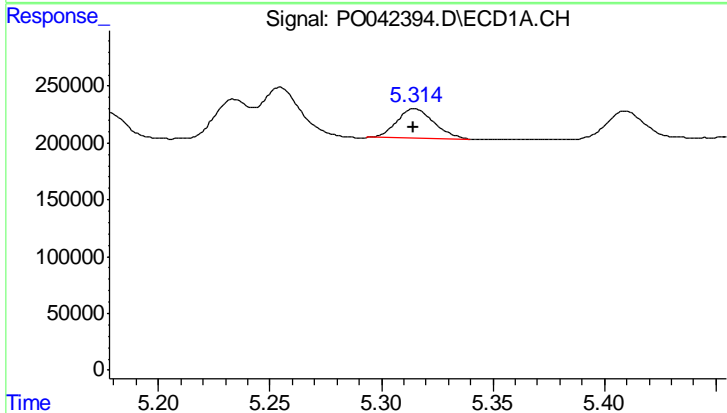
Manual Integrations  
 APPROVED

ugo  
 2/16/2018 2:48:29 PM



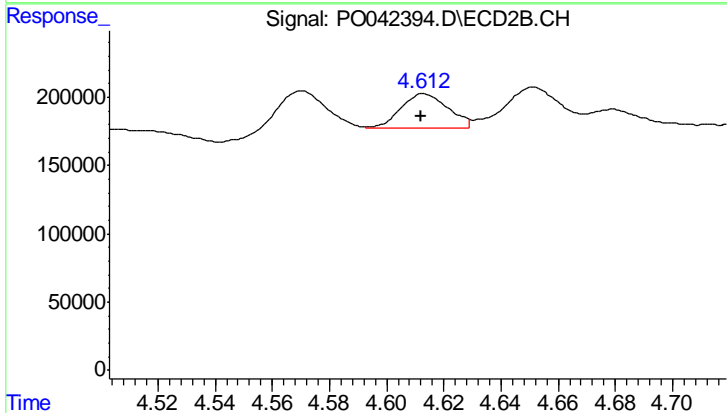
#3 AR-1016-1

R.T.: 4.176 min  
 Delta R.T.: 0.000 min  
 Response: 325362  
 Conc: 48.35 ng/ml



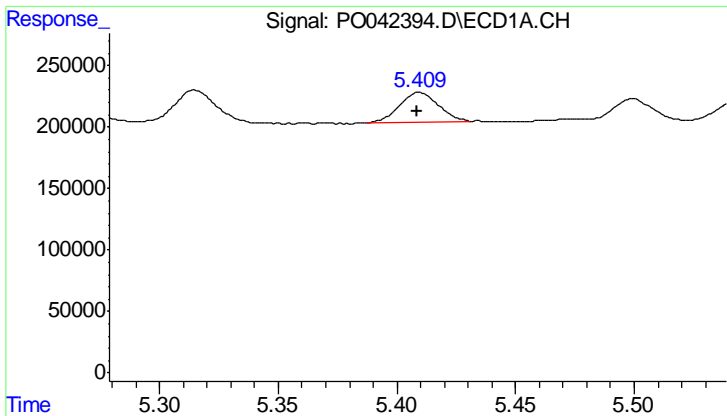
#4 AR-1016-2

R.T.: 5.314 min  
 Delta R.T.: 0.000 min  
 Response: 303559  
 Conc: 48.57 ng/ml m



#4 AR-1016-2

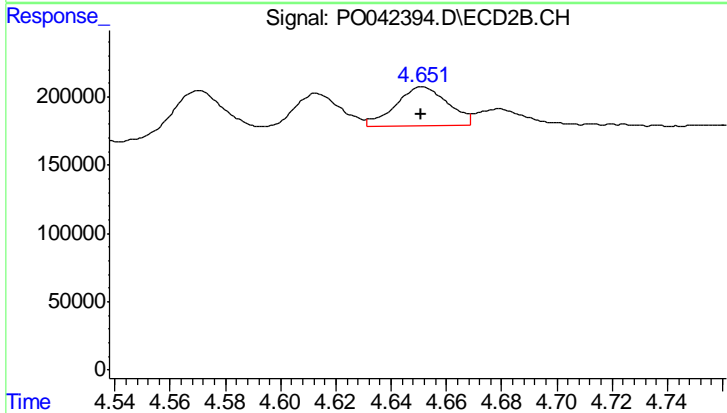
R.T.: 4.612 min  
 Delta R.T.: 0.000 min  
 Response: 277898  
 Conc: 48.64 ng/ml m



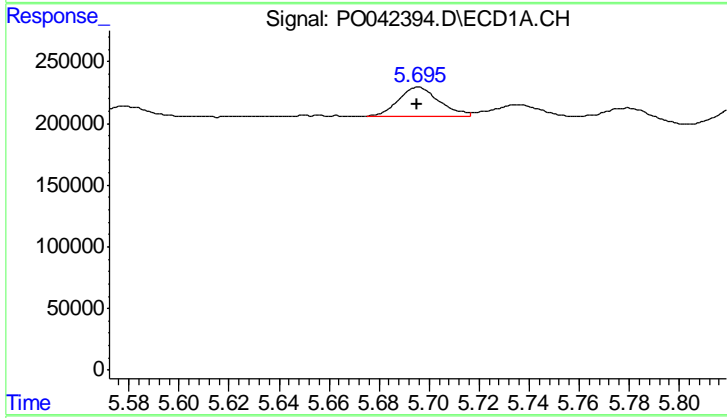
#5 AR-1016-3  
 R.T.: 5.409 min  
 Delta R.T.: 0.000 min  
 Response: 272149  
 Conc: 49.87 ng/ml

**Instrument :**  
 ECD\_O  
**ClientSampled :**  
 AR1660ICC050

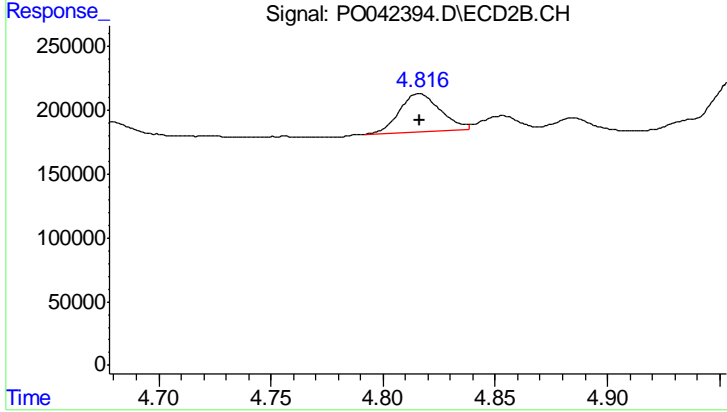
**Manual Integrations**  
**APPROVED**  
 ugo  
 2/16/2018 2:48:29 PM



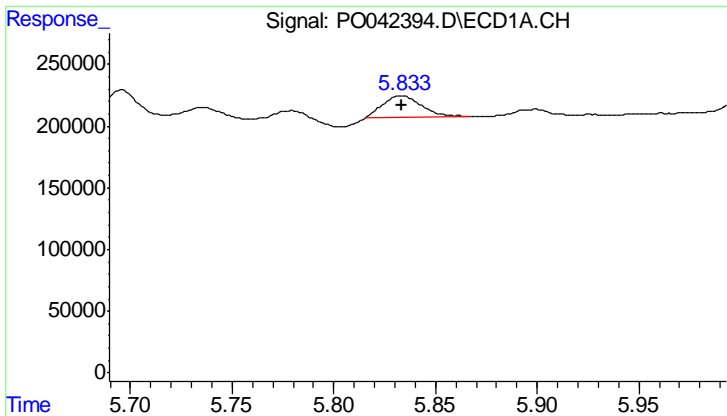
#5 AR-1016-3  
 R.T.: 4.651 min  
 Delta R.T.: 0.000 min  
 Response: 377608  
 Conc: 51.74 ng/ml m



#6 AR-1016-4  
 R.T.: 5.695 min  
 Delta R.T.: 0.000 min  
 Response: 263522  
 Conc: 49.81 ng/ml m



#6 AR-1016-4  
 R.T.: 4.816 min  
 Delta R.T.: 0.000 min  
 Response: 385208  
 Conc: 48.88 ng/ml m



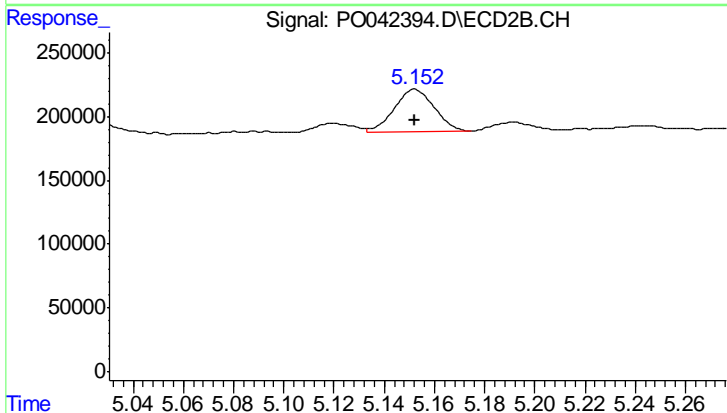
#7 AR-1016-5

R.T.: 5.833 min  
 Delta R.T.: 0.000 min  
 Response: 242479  
 Conc: 43.15 ng/ml

Instrument :  
 ECD\_O  
 ClientSampled :  
 AR1660ICC050

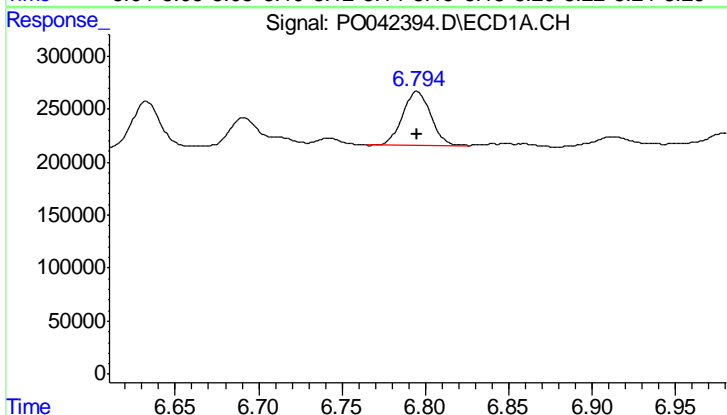
Manual Integrations  
 APPROVED

ugo  
 2/16/2018 2:48:29 PM



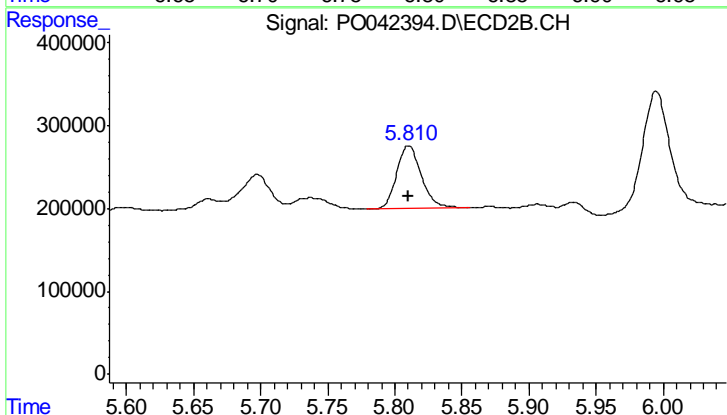
#7 AR-1016-5

R.T.: 5.152 min  
 Delta R.T.: 0.000 min  
 Response: 363125  
 Conc: 45.87 ng/ml



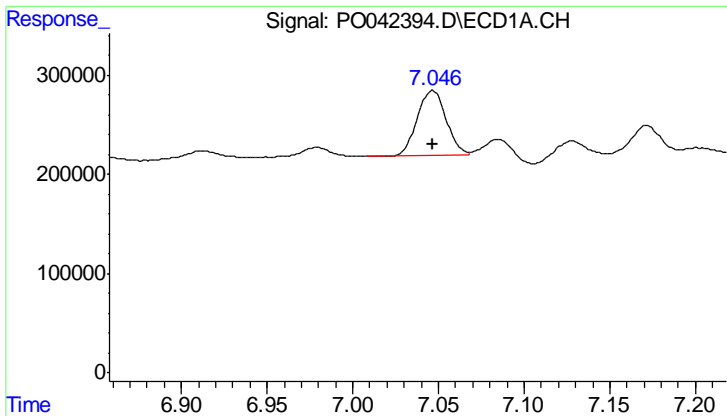
#31 AR-1260-1

R.T.: 6.795 min  
 Delta R.T.: 0.000 min  
 Response: 596107  
 Conc: 53.66 ng/ml



#31 AR-1260-1

R.T.: 5.810 min  
 Delta R.T.: 0.000 min  
 Response: 959463  
 Conc: 51.25 ng/ml



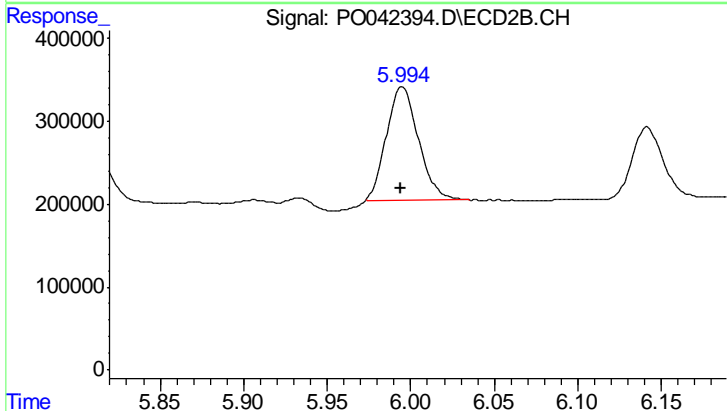
#32 AR-1260-2

R.T.: 7.047 min  
 Delta R.T.: 0.000 min  
 Response: 774406  
 Conc: 51.97 ng/ml

Instrument :  
 ECD\_O  
 ClientSampled :  
 AR1660ICC050

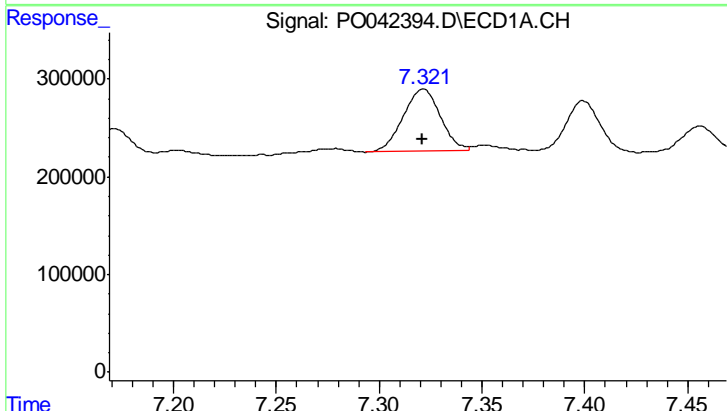
Manual Integrations  
 APPROVED

ugo  
 2/16/2018 2:48:29 PM



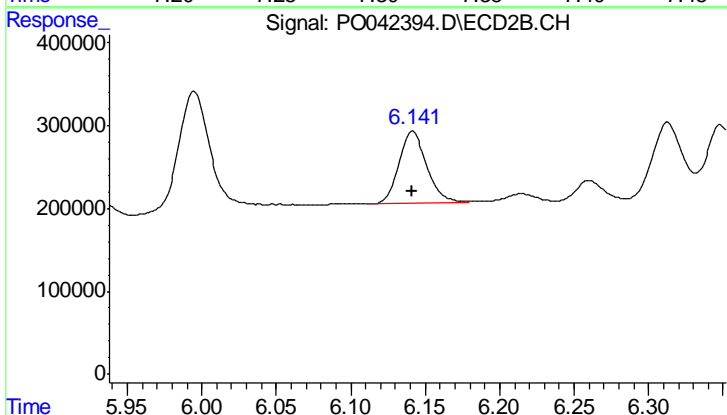
#32 AR-1260-2

R.T.: 5.994 min  
 Delta R.T.: 0.000 min  
 Response: 1822488  
 Conc: 64.15 ng/ml m



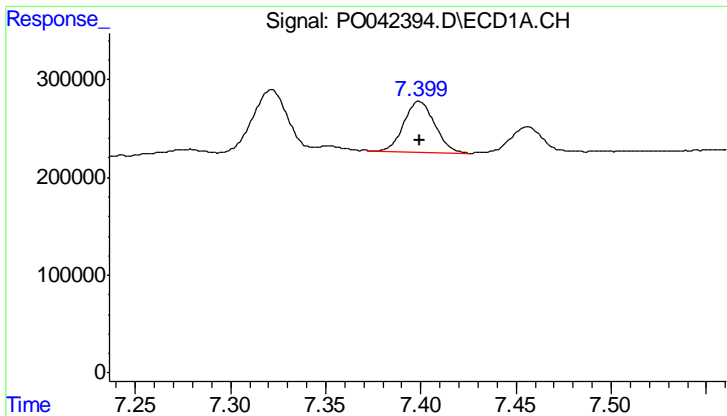
#33 AR-1260-3

R.T.: 7.321 min  
 Delta R.T.: 0.000 min  
 Response: 811669  
 Conc: 49.16 ng/ml m



#33 AR-1260-3

R.T.: 6.141 min  
 Delta R.T.: 0.000 min  
 Response: 1138569  
 Conc: 51.61 ng/ml



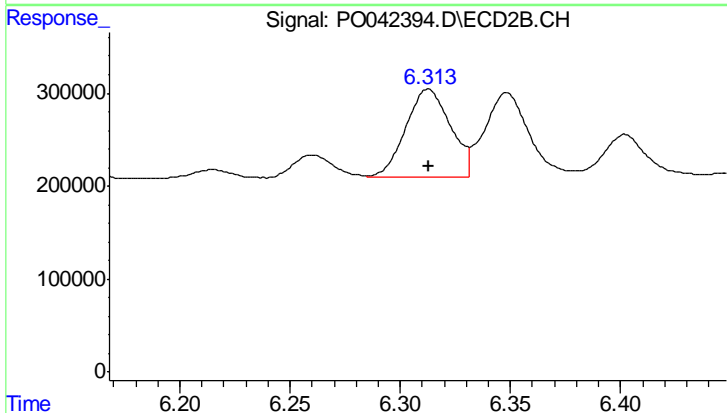
#34 AR-1260-4

R.T.: 7.399 min  
 Delta R.T.: 0.000 min  
 Response: 578961  
 Conc: 48.75 ng/ml

Instrument :  
 ECD\_O  
 ClientSampled :  
 AR1660ICC050

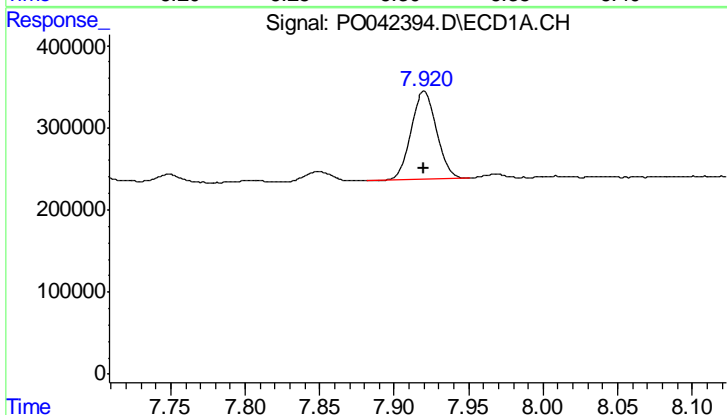
Manual Integrations  
 APPROVED

ugo  
 2/16/2018 2:48:29 PM



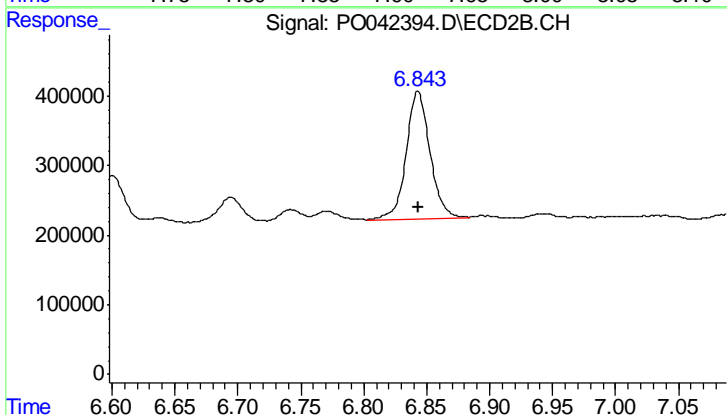
#34 AR-1260-4

R.T.: 6.313 min  
 Delta R.T.: 0.000 min  
 Response: 1344684  
 Conc: 51.64 ng/ml



#35 AR-1260-5

R.T.: 7.920 min  
 Delta R.T.: 0.000 min  
 Response: 1287940  
 Conc: 50.17 ng/ml



#35 AR-1260-5

R.T.: 6.843 min  
 Delta R.T.: 0.000 min  
 Response: 2382173  
 Conc: 48.65 ng/ml