

Data Path : Z:\pestpcbsrv\HPCHEM1\ECD_0\Data\P0021720\
 Data File : P0066584.D
 Signal(s) : Signal #1: ECD1A.CH Signal #2: ECD2B.CH
 Acq On : 17 Feb 2020 15:31
 Operator : DD\AJ
 Sample : L1551-01
 Misc :
 ALS Vial : 20 Sample Multiplier: 1

Instrument :
 ECD_0
 ClientSampleId :
 FK-SF-01-007-A

Integration File signal 1: autoint1.e
 Integration File signal 2: autoint2.e
 Quant Time: Feb 18 01:04:44 2020
 Quant Method : Z:\pestpcbsrv\HPCHEM1\ECD_0\methods\P0021320.M
 Quant Title : GC EXTRACTABLES
 QLast Update : Thu Feb 13 16:40:54 2020
 Response via : Initial Calibration
 Integrator: ChemStation 6890 Scale Mode: Small noise peaks clipped

Volume Inj. : 2 µl
 Signal #1 Phase : ZB-MR1 Signal #2 Phase: ZB-MR2
 Signal #1 Info : 30Mx0.32mmx 0.50µ Signal #2 Info : 30M x 0.32mm x 0.25µm

Compound	RT#1	RT#2	Resp#1	Resp#2	ng/ml	ng/ml

System Monitoring Compounds						
1) SA Tetrachlo...	4.147	3.426	903353	1225144	26.396	30.412
2) SA Decachlor...	9.632	8.315	783442	1036070	17.084	17.228
Target Compounds						
3) L1 AR-1016-1	5.318	4.507	497117	700411	355.498	509.842 #
4) L1 AR-1016-2	5.318	4.507	497117	700411	235.714	257.729
5) L1 AR-1016-3	5.382	4.672	217939	216152	173.841	175.881
6) L1 AR-1016-4	5.445	4.714	1433907	108521	1327.714	109.418 #
7) L1 AR-1016-5	5.764	4.932	679647	103635	643.876	83.742 #
8) L2 AR-1221-1	0.000	3.686	0	72368	N.D.	188.395 #
9) L2 AR-1221-2	0.000	3.686	0	72368	N.D.	250.800 #
10) L2 AR-1221-3	0.000	3.772	0	98269	N.D.	101.532 #
11) L3 AR-1232-1	0.000	3.772	0	98269	N.D.	127.397 #
12) L3 AR-1232-2	5.003	4.507	138005	700411	379.954	627.914 #
13) L3 AR-1232-3	5.318	4.672	497117	216152	618.108	459.360 #
14) L3 AR-1232-4	5.445	4.714	1433907	108521	3545.924	266.738 #
15) L3 AR-1232-5	5.565	4.932	242945	103635	880.224	251.923 #
16) L4 AR-1242-1	5.318	4.507	497117	700411	483.153	698.164 #
17) L4 AR-1242-2	5.318	4.507	497117	700411	320.640	333.842
18) L4 AR-1242-3	5.382	4.672	217939	216152	237.196	246.070
19) L4 AR-1242-4	5.445	4.714	1433907	108521	1874.825	132.927 #
20) L4 AR-1242-5	6.222	5.237	545632	217446	602.859	185.126 #
21) L5 AR-1248-1	5.318	4.507	497117	700411	615.943	842.015 #
22) L5 AR-1248-2	5.565	4.714	242945	108521	215.941	87.545 #
23) L5 AR-1248-3	5.764	4.714	679647	108521	519.352	86.898 #
24) L5 AR-1248-4	6.145	4.932	1754969	103635	1074.910	65.820 #
25) L5 AR-1248-5	6.222	5.276	545632	1773242	357.988	1011.602 #
26) L6 AR-1254-1	6.145	5.237	1754969	217446	1051.972	76.777 #
27) L6 AR-1254-2	6.359	5.413	1302653	508624	485.045	193.029 #
28) L6 AR-1254-3	6.719	5.811	771658	413760	271.137	95.476 #
29) L6 AR-1254-4	6.997	6.038	268460	716124	108.428	231.480 #
30) L6 AR-1254-5	7.411	6.449	429801	960391	173.208	215.731
31) L7 AR-1260-1	6.875	5.938	246615	624592	113.852	212.691 #
32) L7 AR-1260-2	7.127	6.125	1221073	941452	368.838	198.043 #
33) L7 AR-1260-3	7.486	6.275	175420	619298	63.530	154.840 #
34) L7 AR-1260-4	7.706	6.742	306573	431841	118.264	133.883
35) L7 AR-1260-5	8.015	6.984	337288	1061711	55.313	114.570 #
36) L8 AR-1262-1	7.486	6.449	175420	960391	44.673	438.188 #
37) L8 AR-1262-2	8.015	6.984	337288	1061711	51.769	106.414 #
38) L8 AR-1262-3	8.312	7.263	184609	334877	43.492	77.511 #
39) L8 AR-1262-4	8.312	7.325	184609	612161	60.120	88.114 #
40) L8 AR-1262-5	0.000	7.818	0	128455	N.D.	44.770 #
41) L9 AR-1268-1	8.312	7.263	184609	334877	23.601	28.313
42) L9 AR-1268-2	8.312	7.325	184609	612161	28.269	62.232 #

Data Path : Z:\pestpcbsrv\HPCHEM1\ECD_0\Data\P0021720\
 Data File : P0066584.D
 Signal(s) : Signal #1: ECD1A.CH Signal #2: ECD2B.CH
 Acq On : 17 Feb 2020 15:31
 Operator : DD\AJ
 Sample : L1551-01
 Misc :
 ALS Vial : 20 Sample Multiplier: 1

Instrument :
 ECD_0
 ClientSampleId :
 FK-SF-01-007-A

Integration File signal 1: autoint1.e
 Integration File signal 2: autoint2.e
 Quant Time: Feb 18 01:04:44 2020
 Quant Method : Z:\pestpcbsrv\HPCHEM1\ECD_0\methods\P0021320.M
 Quant Title : GC EXTRACTABLES
 QLast Update : Thu Feb 13 16:40:54 2020
 Response via : Initial Calibration
 Integrator: ChemStation 6890 Scale Mode: Small noise peaks clipped

Volume Inj. : 2 µl
 Signal #1 Phase : ZB-MR1 Signal #2 Phase: ZB-MR2
 Signal #1 Info : 30Mx0.32mmx 0.50µ Signal #2 Info : 30M x 0.32mm x 0.25µm

	Compound	RT#1	RT#2	Resp#1	Resp#2	ng/ml	ng/ml
43)	L9 AR-1268-3	0.000	7.528	0	76987	N.D.	9.203 #
44)	L9 AR-1268-4	0.000	7.818	0	128455	N.D.	39.652 #
45)	L9 AR-1268-5	0.000	8.086	0	80756	N.D.	3.429 #

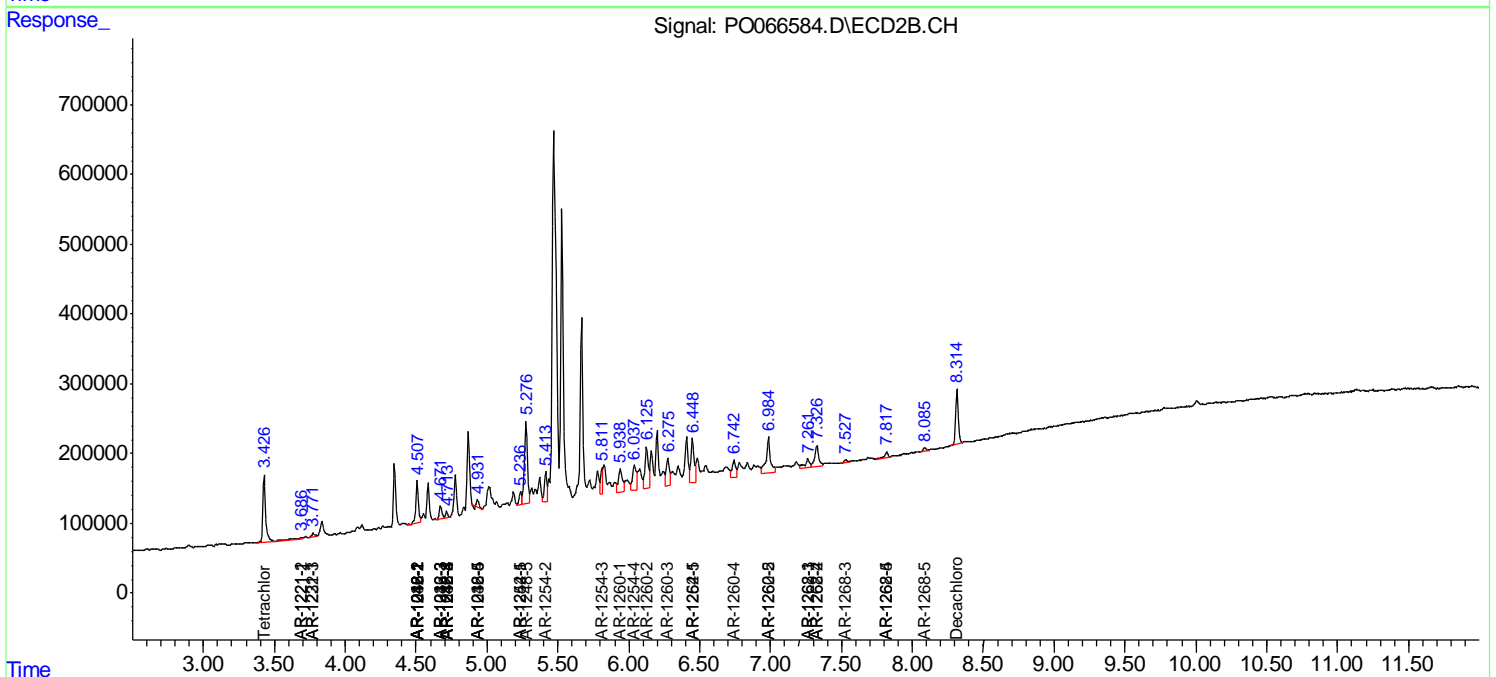
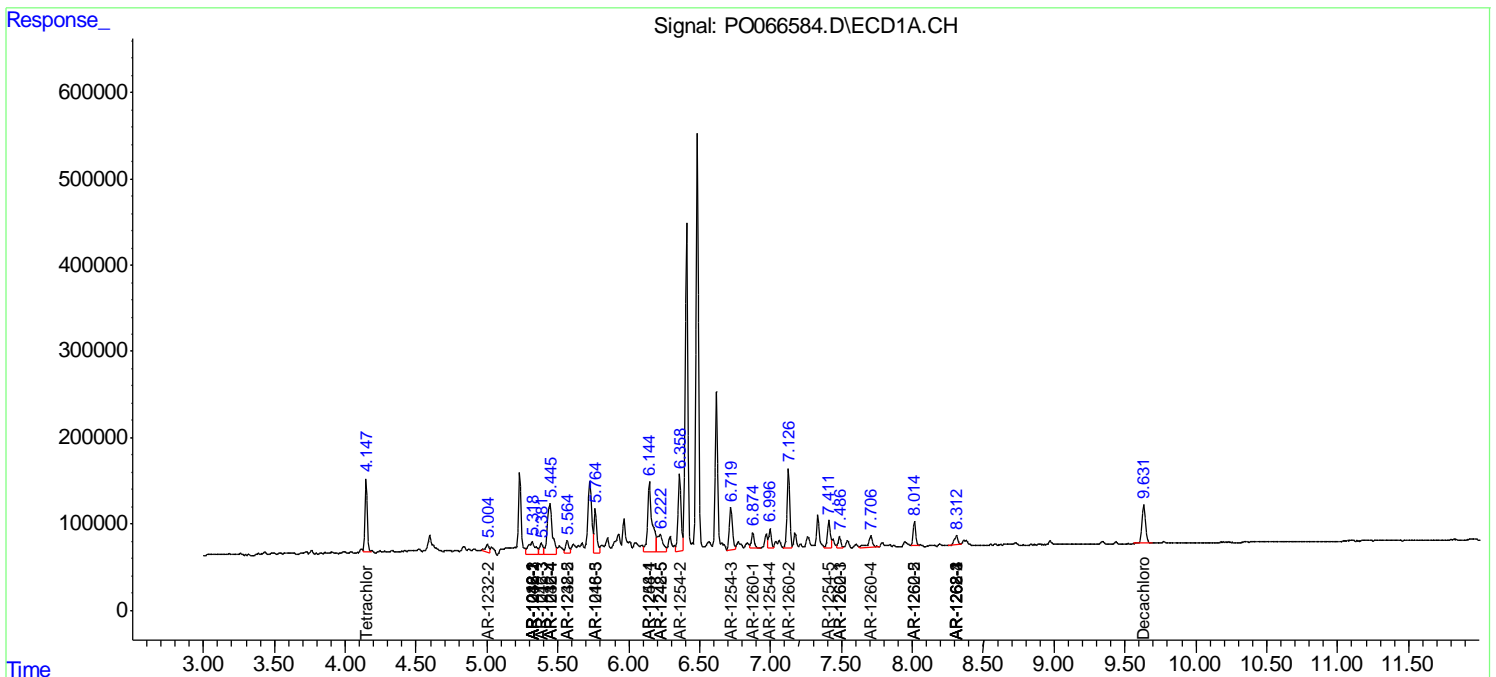
(f)=RT Delta > 1/2 Window (#)=Amounts differ by > 25% (m)=manual int.

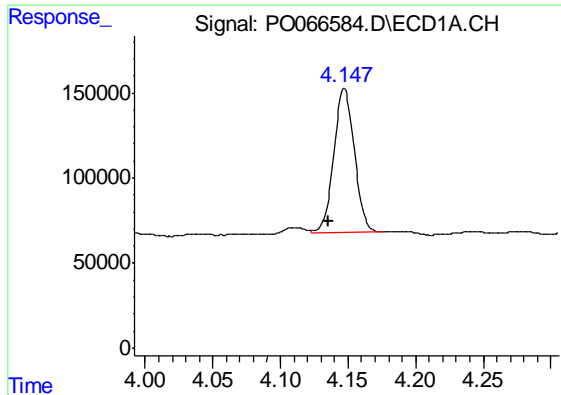
Data Path : Z:\pestpcbsrv\HPCHEM1\ECD_O\Data\PO021720\
 Data File : PO066584.D
 Signal(s) : Signal #1: ECD1A.CH Signal #2: ECD2B.CH
 Acq On : 17 Feb 2020 15:31
 Operator : DD\AJ
 Sample : L1551-01
 Misc :
 ALS Vial : 20 Sample Multiplier: 1

Instrument :
 ECD_O
 ClientSampleId :
 FK-SF-01-007-A

Integration File signal 1: autoint1.e
 Integration File signal 2: autoint2.e
 Quant Time: Feb 18 01:04:44 2020
 Quant Method : Z:\pestpcbsrv\HPCHEM1\ECD_O\methods\PO021320.M
 Quant Title : GC EXTRACTABLES
 QLast Update : Thu Feb 13 16:40:54 2020
 Response via : Initial Calibration
 Integrator: ChemStation 6890 Scale Mode: Small noise peaks clipped

Volume Inj. : 2 µl
 Signal #1 Phase : ZB-MR1 Signal #2 Phase: ZB-MR2
 Signal #1 Info : 30Mx0.32mmx 0.50µ Signal #2 Info : 30M x 0.32mm x 0.25µm

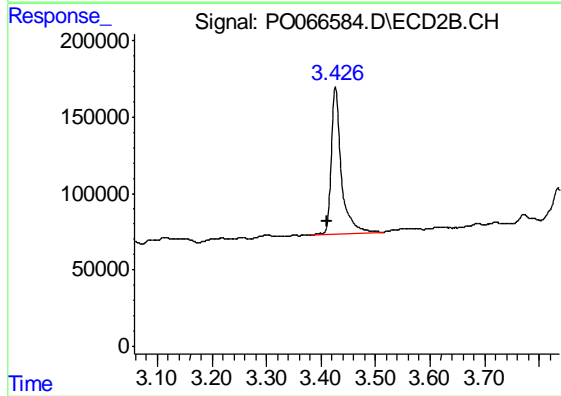




#1 Tetrachloro-m-xylene

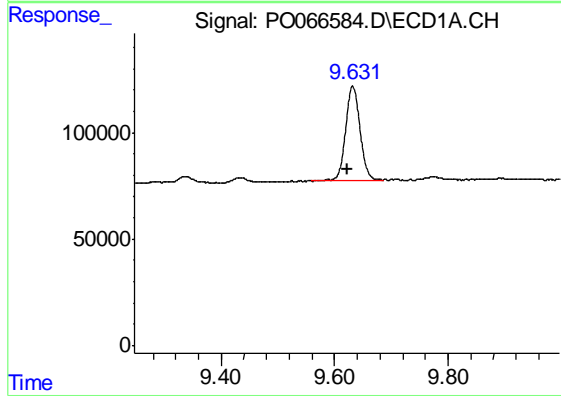
R.T.: 4.147 min
 Delta R.T.: 0.012 min
 Response: 903353
 Conc: 26.40 ng/ml

Instrument :
 ECD_O
 ClientSampleId :
 FK-SF-01-007-A



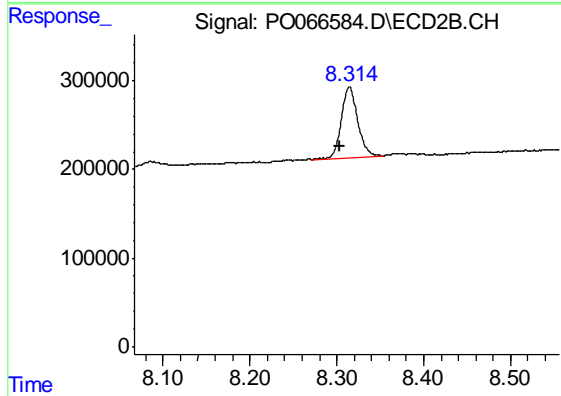
#1 Tetrachloro-m-xylene

R.T.: 3.426 min
 Delta R.T.: 0.014 min
 Response: 1225144
 Conc: 30.41 ng/ml



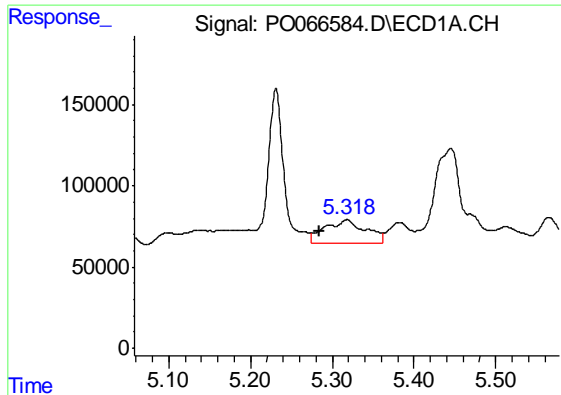
#2 Decachlorobiphenyl

R.T.: 9.632 min
 Delta R.T.: 0.009 min
 Response: 783442
 Conc: 17.08 ng/ml



#2 Decachlorobiphenyl

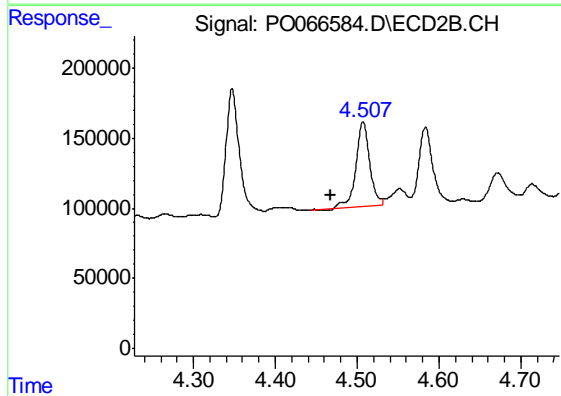
R.T.: 8.315 min
 Delta R.T.: 0.011 min
 Response: 1036070
 Conc: 17.23 ng/ml



#3 AR-1016-1

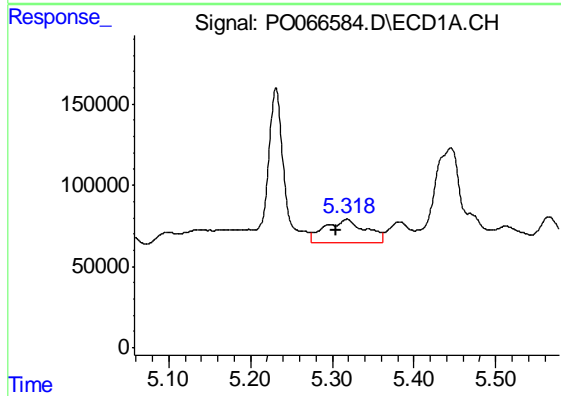
R.T.: 5.318 min
 Delta R.T.: 0.034 min
 Response: 497117
 Conc: 355.50 ng/ml

Instrument :
 ECD_O
 ClientSampleId :
 FK-SF-01-007-A



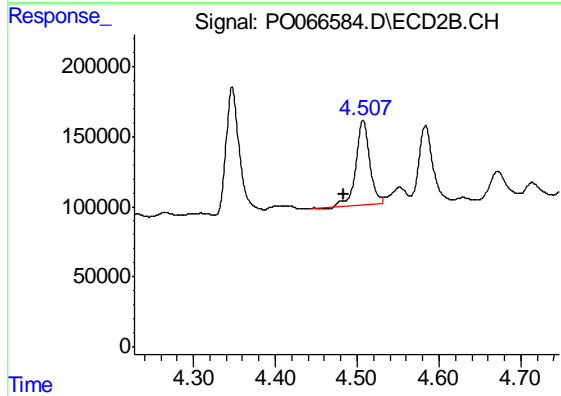
#3 AR-1016-1

R.T.: 4.507 min
 Delta R.T.: 0.040 min
 Response: 700411
 Conc: 509.84 ng/ml



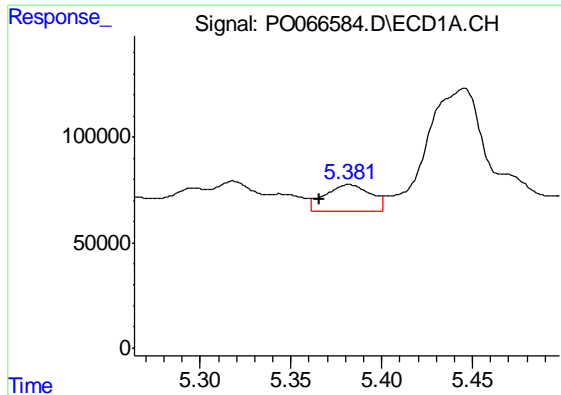
#4 AR-1016-2

R.T.: 5.318 min
 Delta R.T.: 0.013 min
 Response: 497117
 Conc: 235.71 ng/ml



#4 AR-1016-2

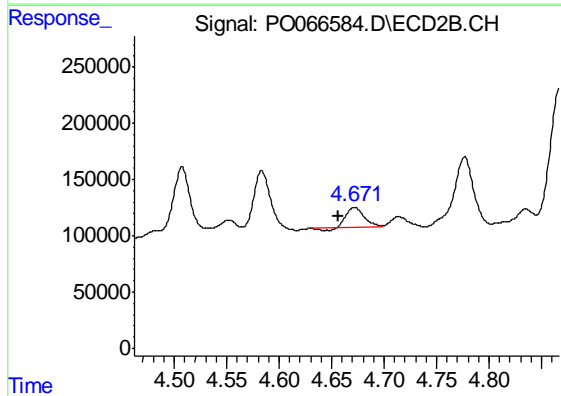
R.T.: 4.507 min
 Delta R.T.: 0.023 min
 Response: 700411
 Conc: 257.73 ng/ml



#5 AR-1016-3

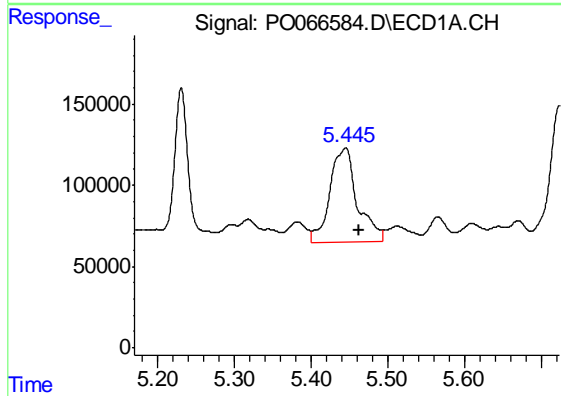
R.T.: 5.382 min
 Delta R.T.: 0.016 min
 Response: 217939
 Conc: 173.84 ng/ml

Instrument :
 ECD_O
 ClientSampleId :
 FK-SF-01-007-A



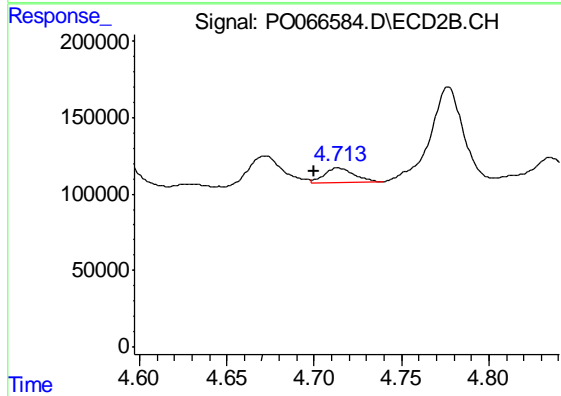
#5 AR-1016-3

R.T.: 4.672 min
 Delta R.T.: 0.015 min
 Response: 216152
 Conc: 175.88 ng/ml



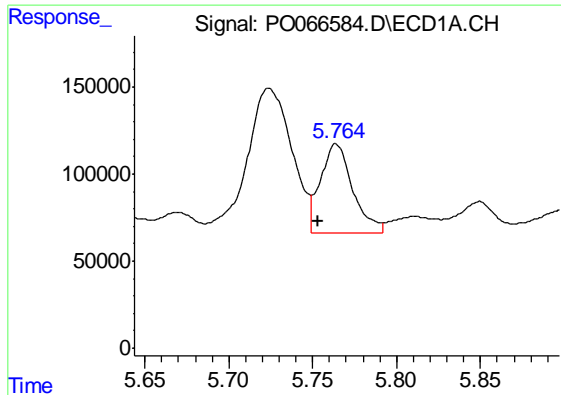
#6 AR-1016-4

R.T.: 5.445 min
 Delta R.T.: -0.018 min
 Response: 1433907
 Conc: 1327.71 ng/ml



#6 AR-1016-4

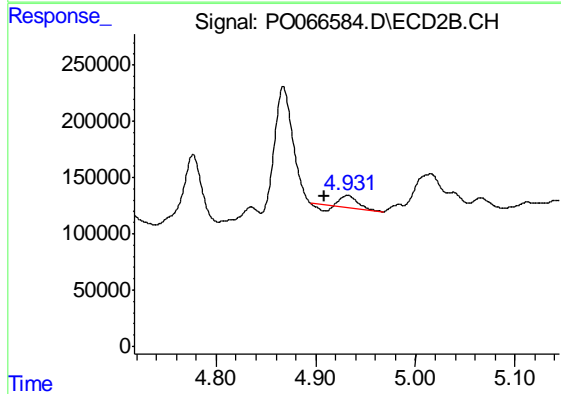
R.T.: 4.714 min
 Delta R.T.: 0.014 min
 Response: 108521
 Conc: 109.42 ng/ml



#7 AR-1016-5

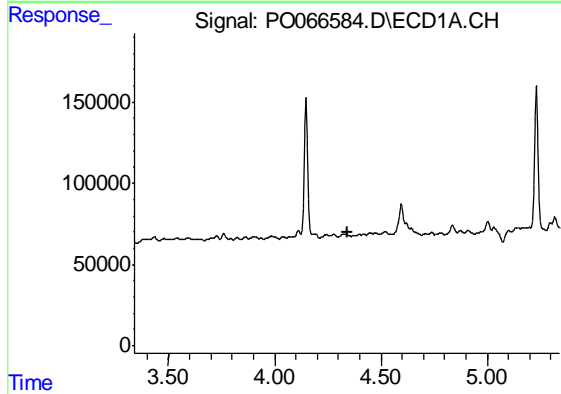
R.T.: 5.764 min
 Delta R.T.: 0.011 min
 Response: 679647
 Conc: 643.88 ng/ml

Instrument :
 ECD_O
 ClientSampleId :
 FK-SF-01-007-A



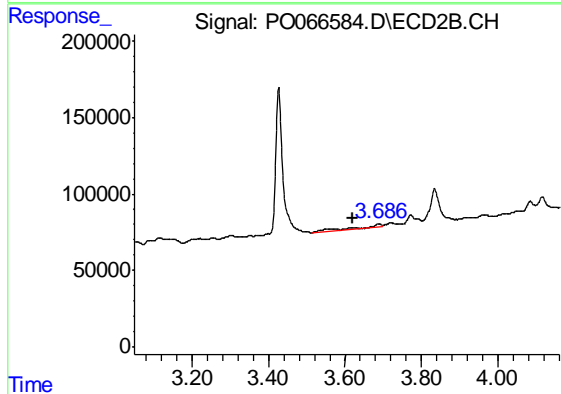
#7 AR-1016-5

R.T.: 4.932 min
 Delta R.T.: 0.023 min
 Response: 103635
 Conc: 83.74 ng/ml



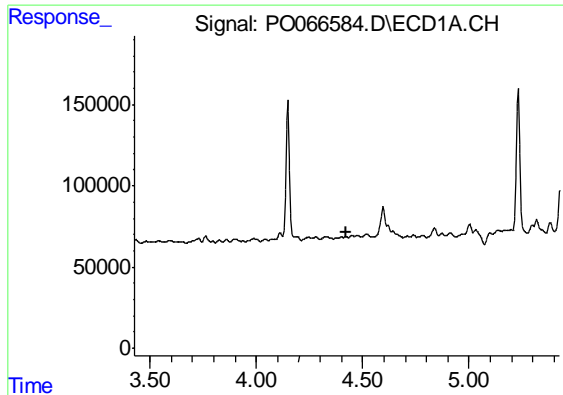
#8 AR-1221-1

R.T.: 0.000 min
 Exp R.T. : 4.340 min
 Response: 0
 Conc: N.D.



#8 AR-1221-1

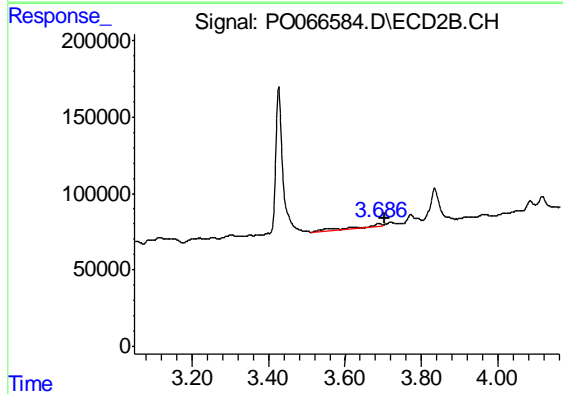
R.T.: 3.686 min
 Delta R.T.: 0.067 min
 Response: 72368
 Conc: 188.39 ng/ml



#9 AR-1221-2

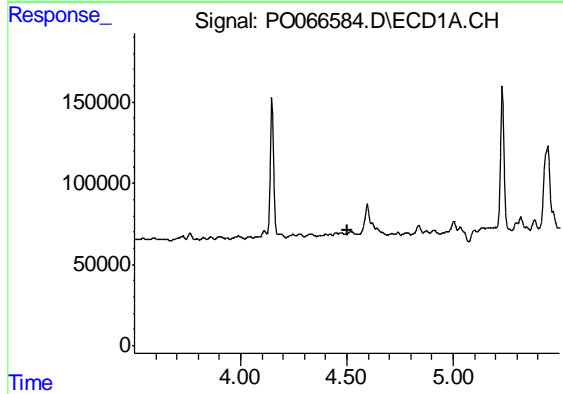
R.T.: 0.000 min
 Exp R.T. : 4.426 min
 Response: 0
 Conc: N.D.

Instrument :
 ECD_O
 ClientSampleId :
 FK-SF-01-007-A



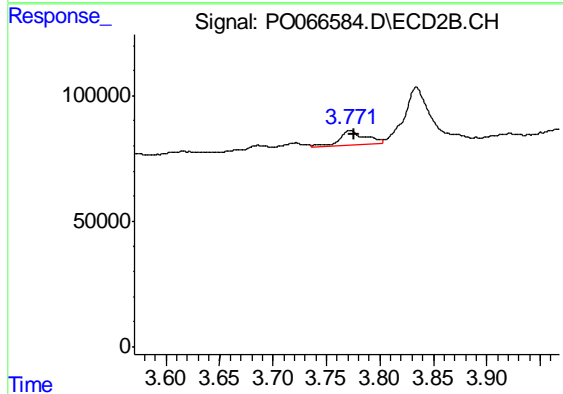
#9 AR-1221-2

R.T.: 3.686 min
 Delta R.T.: -0.016 min
 Response: 72368
 Conc: 250.80 ng/ml



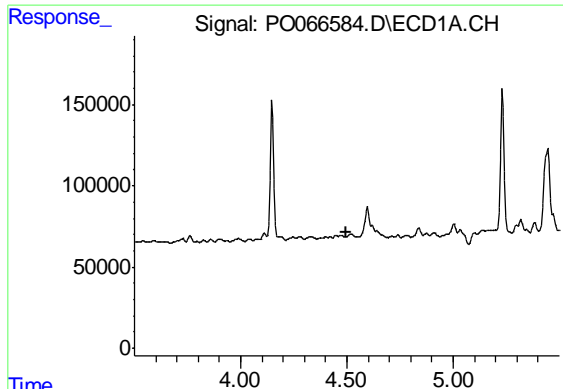
#10 AR-1221-3

R.T.: 0.000 min
 Exp R.T. : 4.500 min
 Response: 0
 Conc: N.D.



#10 AR-1221-3

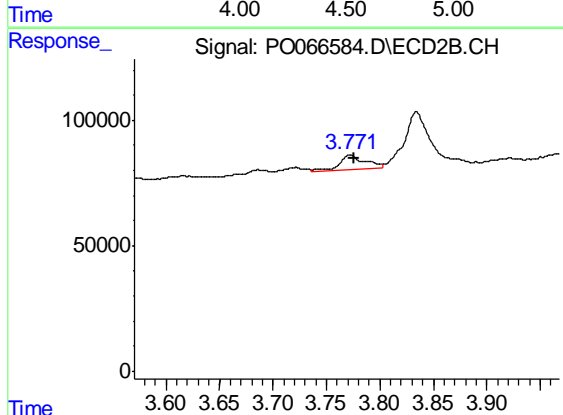
R.T.: 3.772 min
 Delta R.T.: -0.004 min
 Response: 98269
 Conc: 101.53 ng/ml



#11 AR-1232-1

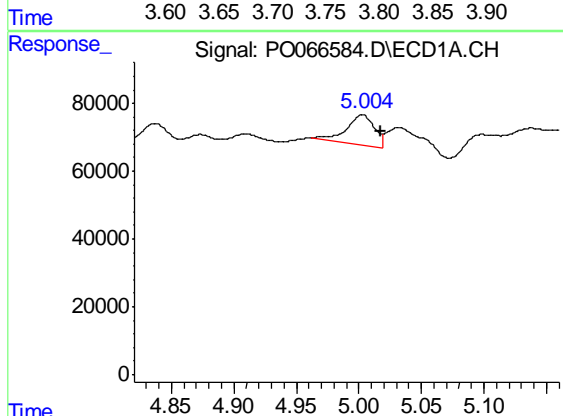
R.T.: 0.000 min
 Exp R.T. : 4.500 min
 Response: 0
 Conc: N.D.

Instrument :
 ECD_O
 ClientSampleId :
 FK-SF-01-007-A



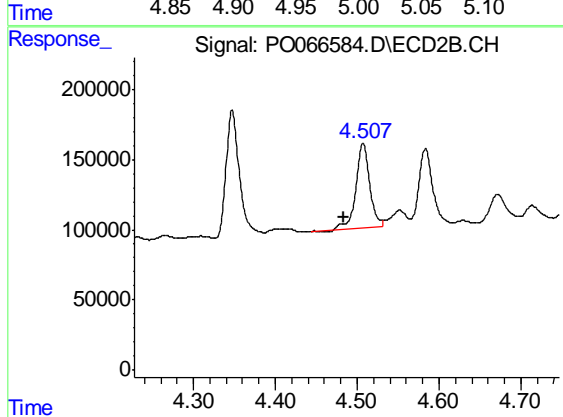
#11 AR-1232-1

R.T.: 3.772 min
 Delta R.T.: -0.004 min
 Response: 98269
 Conc: 127.40 ng/ml



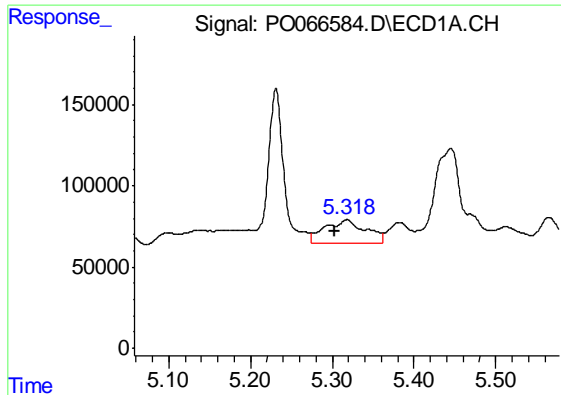
#12 AR-1232-2

R.T.: 5.003 min
 Delta R.T.: -0.014 min
 Response: 138005
 Conc: 379.95 ng/ml



#12 AR-1232-2

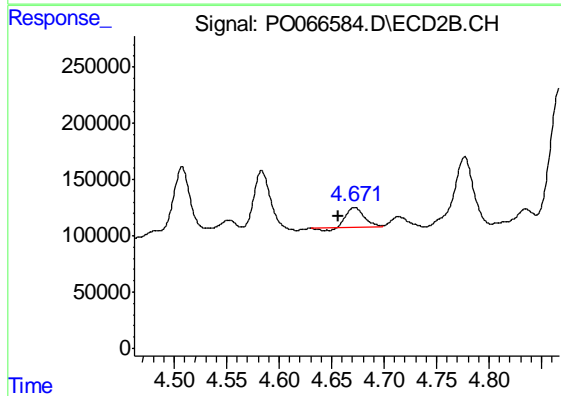
R.T.: 4.507 min
 Delta R.T.: 0.023 min
 Response: 700411
 Conc: 627.91 ng/ml



#13 AR-1232-3

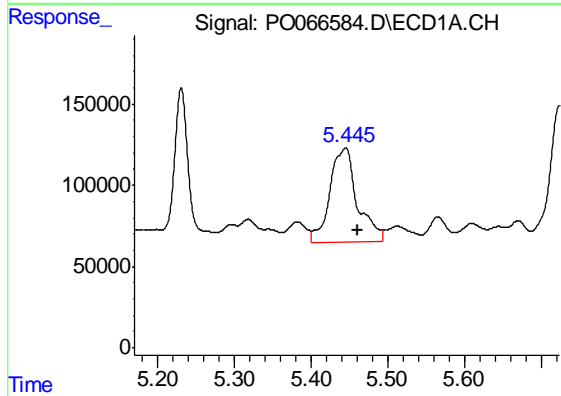
R.T.: 5.318 min
 Delta R.T.: 0.015 min
 Response: 497117
 Conc: 618.11 ng/ml

Instrument :
 ECD_O
 ClientSampleId :
 FK-SF-01-007-A



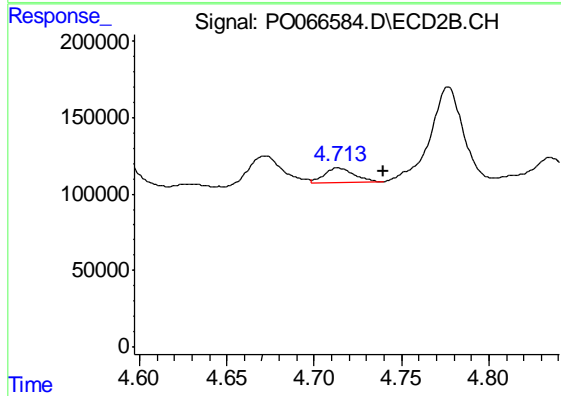
#13 AR-1232-3

R.T.: 4.672 min
 Delta R.T.: 0.015 min
 Response: 216152
 Conc: 459.36 ng/ml



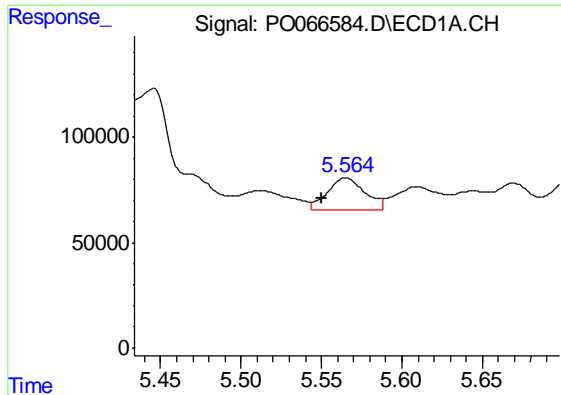
#14 AR-1232-4

R.T.: 5.445 min
 Delta R.T.: -0.015 min
 Response: 1433907
 Conc: 3545.92 ng/ml



#14 AR-1232-4

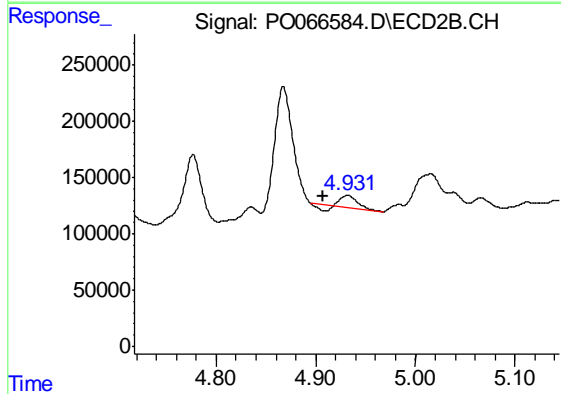
R.T.: 4.714 min
 Delta R.T.: -0.026 min
 Response: 108521
 Conc: 266.74 ng/ml



#15 AR-1232-5

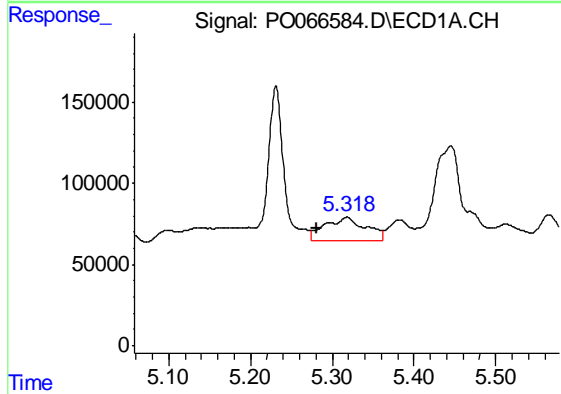
R.T.: 5.565 min
 Delta R.T.: 0.014 min
 Response: 242945
 Conc: 880.22 ng/ml

Instrument :
 ECD_O
 ClientSampleId :
 FK-SF-01-007-A



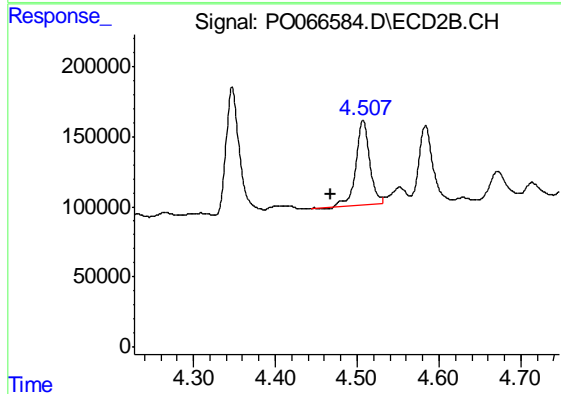
#15 AR-1232-5

R.T.: 4.932 min
 Delta R.T.: 0.024 min
 Response: 103635
 Conc: 251.92 ng/ml



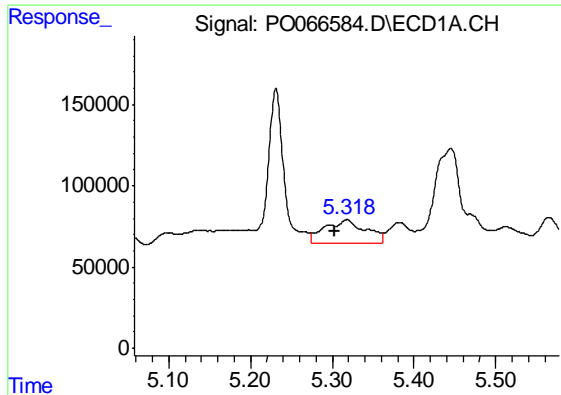
#16 AR-1242-1

R.T.: 5.318 min
 Delta R.T.: 0.037 min
 Response: 497117
 Conc: 483.15 ng/ml



#16 AR-1242-1

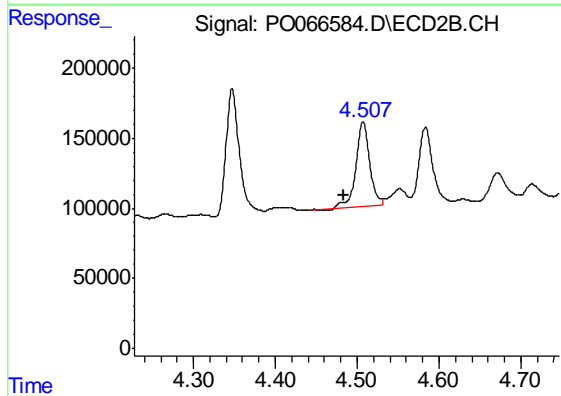
R.T.: 4.507 min
 Delta R.T.: 0.040 min
 Response: 700411
 Conc: 698.16 ng/ml



#17 AR-1242-2

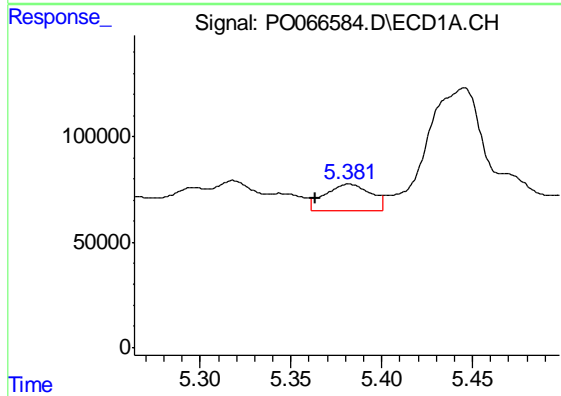
R.T.: 5.318 min
 Delta R.T.: 0.015 min
 Response: 497117
 Conc: 320.64 ng/ml

Instrument :
 ECD_O
 ClientSampleId :
 FK-SF-01-007-A



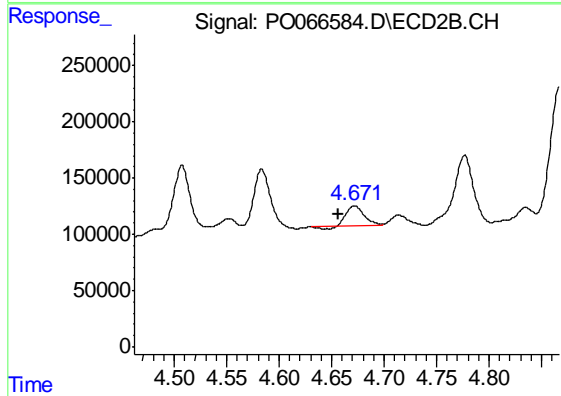
#17 AR-1242-2

R.T.: 4.507 min
 Delta R.T.: 0.023 min
 Response: 700411
 Conc: 333.84 ng/ml



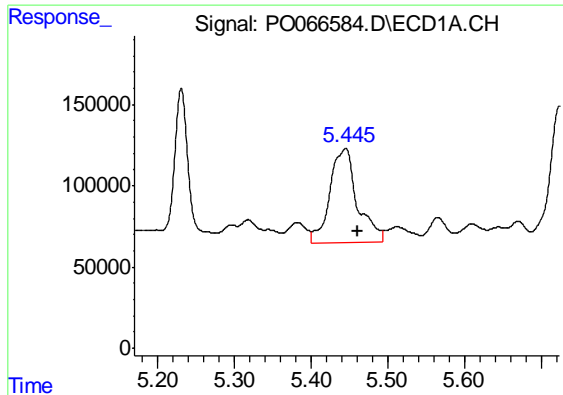
#18 AR-1242-3

R.T.: 5.382 min
 Delta R.T.: 0.018 min
 Response: 217939
 Conc: 237.20 ng/ml



#18 AR-1242-3

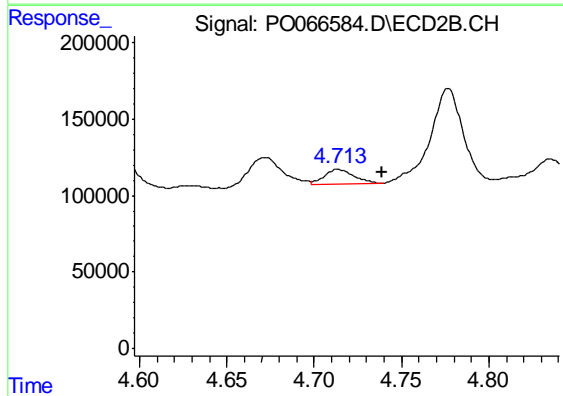
R.T.: 4.672 min
 Delta R.T.: 0.015 min
 Response: 216152
 Conc: 246.07 ng/ml



#19 AR-1242-4

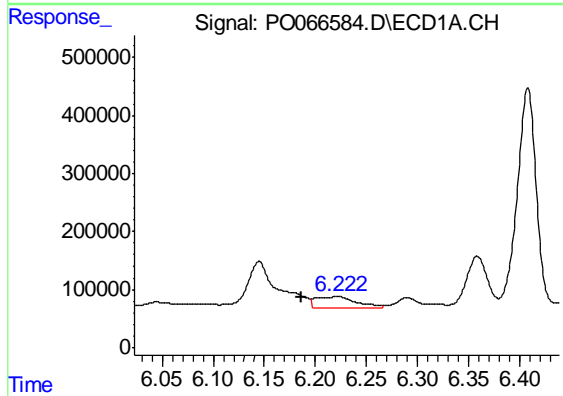
R.T.: 5.445 min
 Delta R.T.: -0.016 min
 Response: 1433907
 Conc: 1874.82 ng/ml

Instrument :
 ECD_O
 ClientSampleId :
 FK-SF-01-007-A



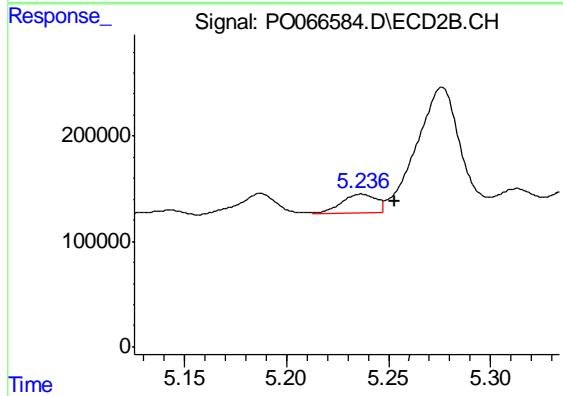
#19 AR-1242-4

R.T.: 4.714 min
 Delta R.T.: -0.025 min
 Response: 108521
 Conc: 132.93 ng/ml



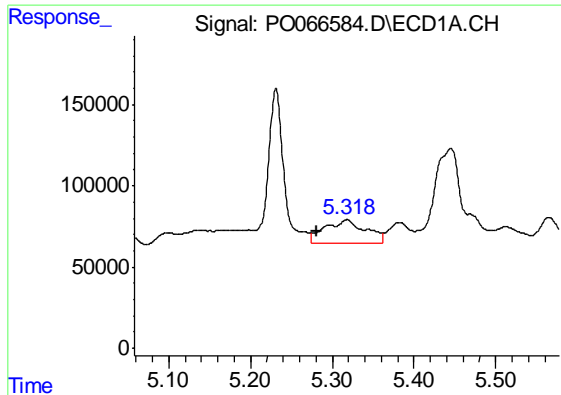
#20 AR-1242-5

R.T.: 6.222 min
 Delta R.T.: 0.035 min
 Response: 545632
 Conc: 602.86 ng/ml



#20 AR-1242-5

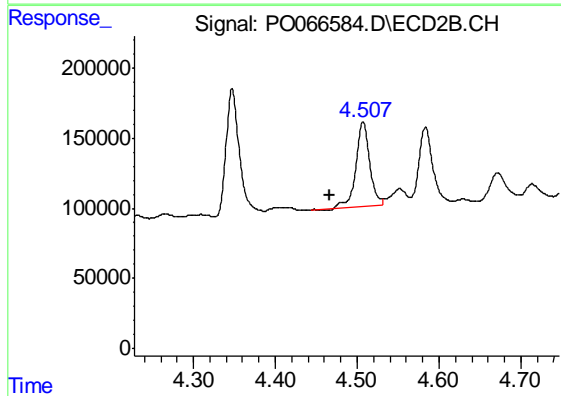
R.T.: 5.237 min
 Delta R.T.: -0.017 min
 Response: 217446
 Conc: 185.13 ng/ml



#21 AR-1248-1

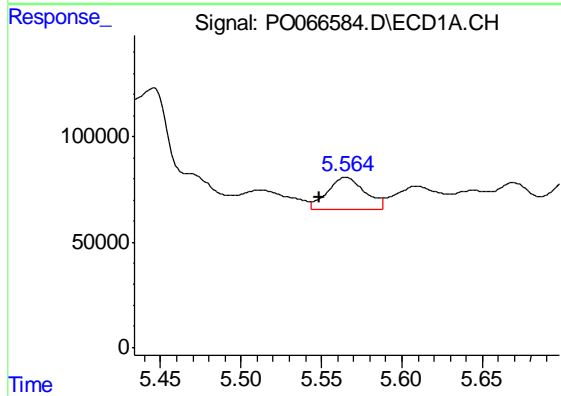
R.T.: 5.318 min
 Delta R.T.: 0.038 min
 Response: 497117
 Conc: 615.94 ng/ml

Instrument :
 ECD_O
 ClientSampleId :
 FK-SF-01-007-A



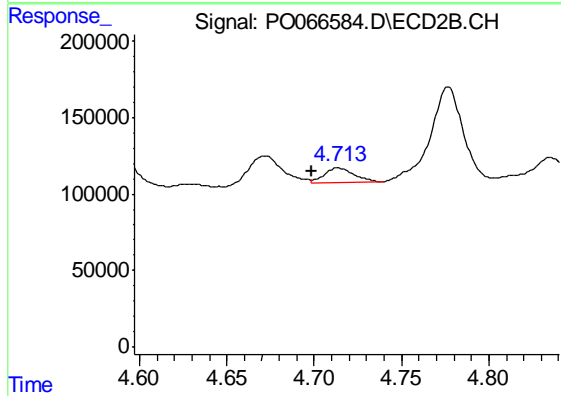
#21 AR-1248-1

R.T.: 4.507 min
 Delta R.T.: 0.041 min
 Response: 700411
 Conc: 842.01 ng/ml



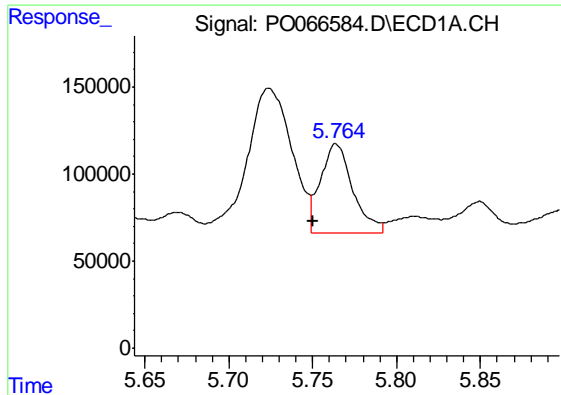
#22 AR-1248-2

R.T.: 5.565 min
 Delta R.T.: 0.016 min
 Response: 242945
 Conc: 215.94 ng/ml



#22 AR-1248-2

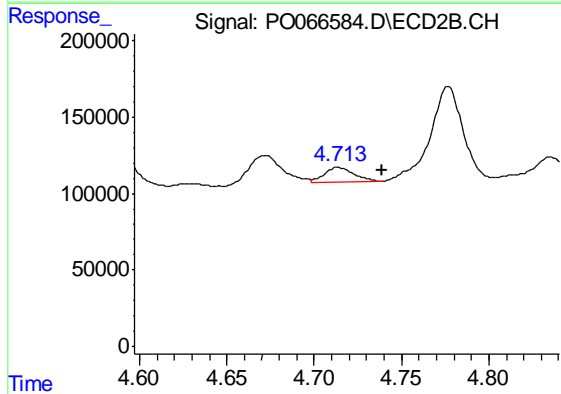
R.T.: 4.714 min
 Delta R.T.: 0.015 min
 Response: 108521
 Conc: 87.54 ng/ml



#23 AR-1248-3

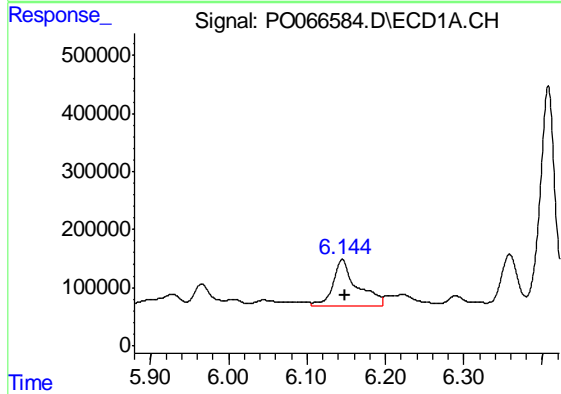
R.T.: 5.764 min
 Delta R.T.: 0.014 min
 Response: 679647
 Conc: 519.35 ng/ml

Instrument :
 ECD_O
 ClientSampleId :
 FK-SF-01-007-A



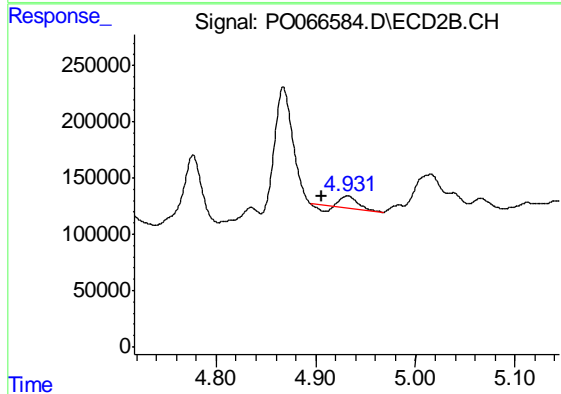
#23 AR-1248-3

R.T.: 4.714 min
 Delta R.T.: -0.025 min
 Response: 108521
 Conc: 86.90 ng/ml



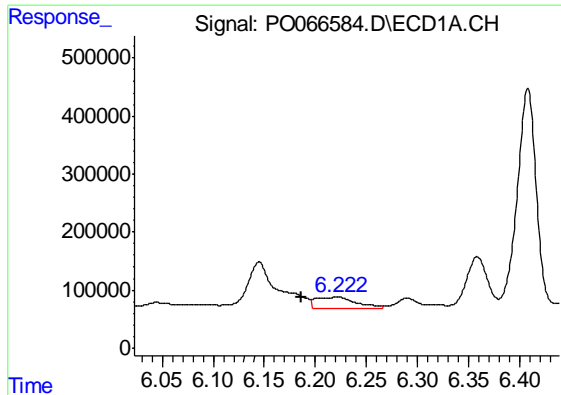
#24 AR-1248-4

R.T.: 6.145 min
 Delta R.T.: -0.004 min
 Response: 1754969
 Conc: 1074.91 ng/ml



#24 AR-1248-4

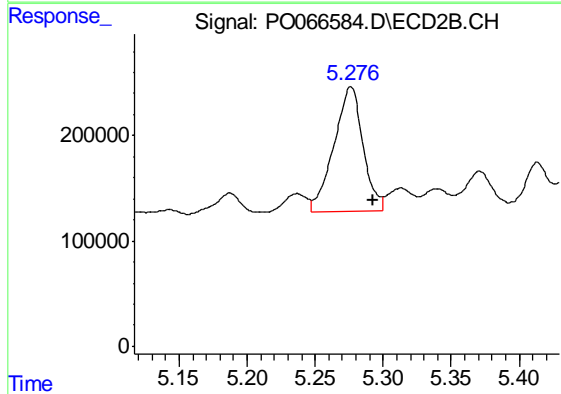
R.T.: 4.932 min
 Delta R.T.: 0.025 min
 Response: 103635
 Conc: 65.82 ng/ml



#25 AR-1248-5

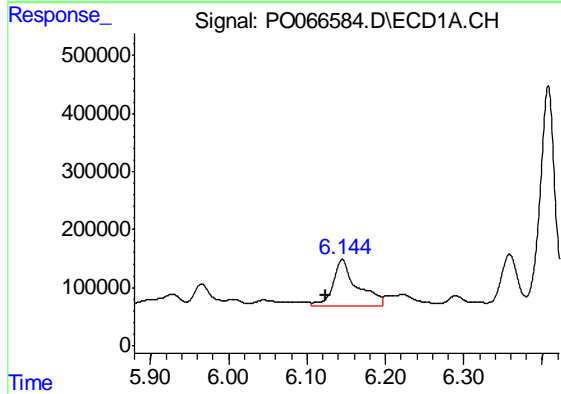
R.T.: 6.222 min
 Delta R.T.: 0.035 min
 Response: 545632
 Conc: 357.99 ng/ml

Instrument :
 ECD_O
 ClientSampleId :
 FK-SF-01-007-A



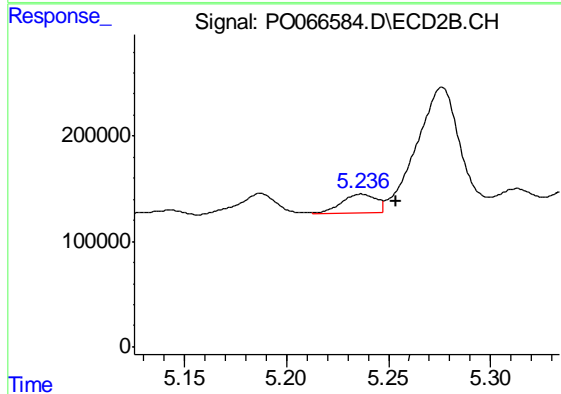
#25 AR-1248-5

R.T.: 5.276 min
 Delta R.T.: -0.016 min
 Response: 1773242
 Conc: 1011.60 ng/ml



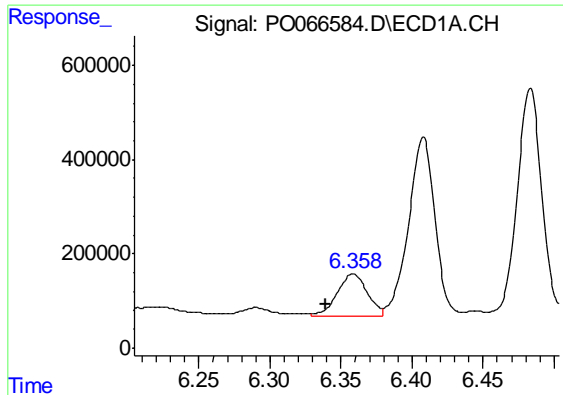
#26 AR-1254-1

R.T.: 6.145 min
 Delta R.T.: 0.022 min
 Response: 1754969
 Conc: 1051.97 ng/ml



#26 AR-1254-1

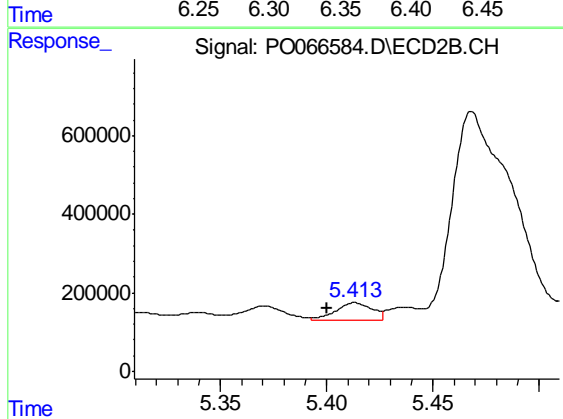
R.T.: 5.237 min
 Delta R.T.: -0.017 min
 Response: 217446
 Conc: 76.78 ng/ml



#27 AR-1254-2

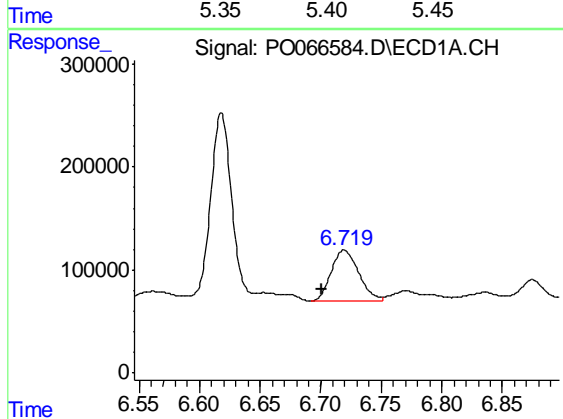
R.T.: 6.359 min
 Delta R.T.: 0.019 min
 Response: 1302653
 Conc: 485.05 ng/ml

Instrument :
 ECD_O
 ClientSampleId :
 FK-SF-01-007-A



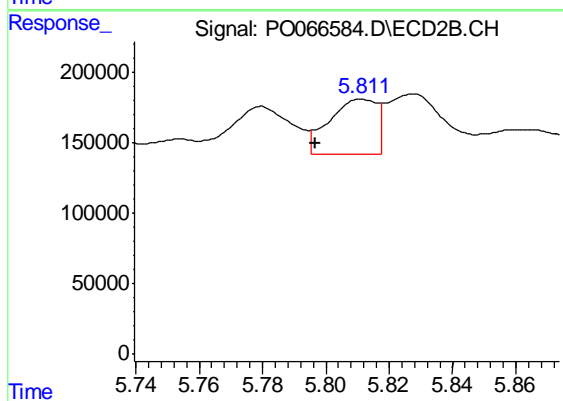
#27 AR-1254-2

R.T.: 5.413 min
 Delta R.T.: 0.013 min
 Response: 508624
 Conc: 193.03 ng/ml



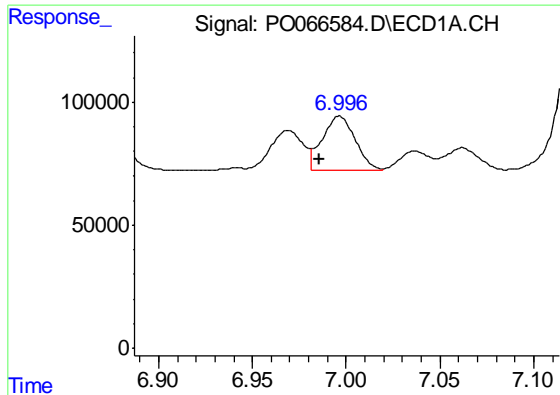
#28 AR-1254-3

R.T.: 6.719 min
 Delta R.T.: 0.018 min
 Response: 771658
 Conc: 271.14 ng/ml



#28 AR-1254-3

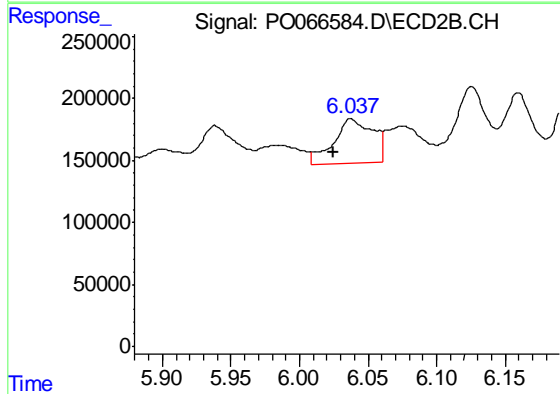
R.T.: 5.811 min
 Delta R.T.: 0.015 min
 Response: 413760
 Conc: 95.48 ng/ml



#29 AR-1254-4

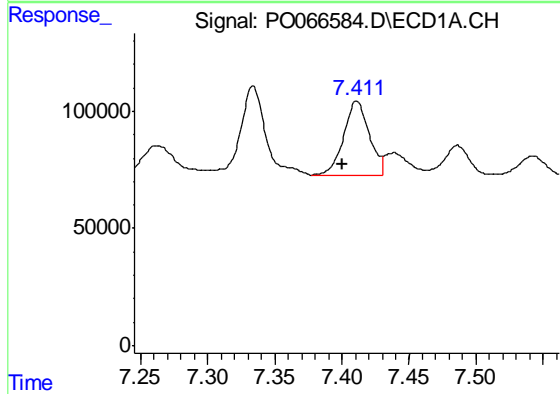
R.T.: 6.997 min
 Delta R.T.: 0.011 min
 Response: 268460
 Conc: 108.43 ng/ml

Instrument :
 ECD_O
 ClientSampled :
 FK-SF-01-007-A



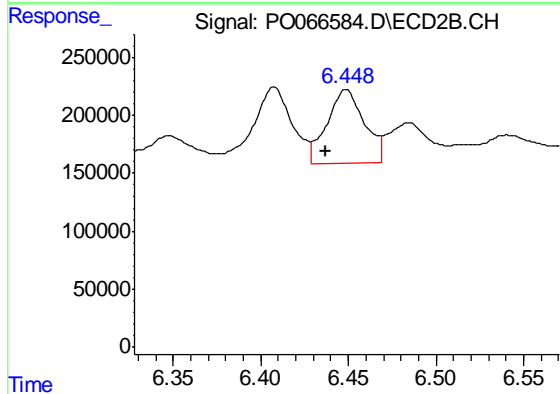
#29 AR-1254-4

R.T.: 6.038 min
 Delta R.T.: 0.013 min
 Response: 716124
 Conc: 231.48 ng/ml



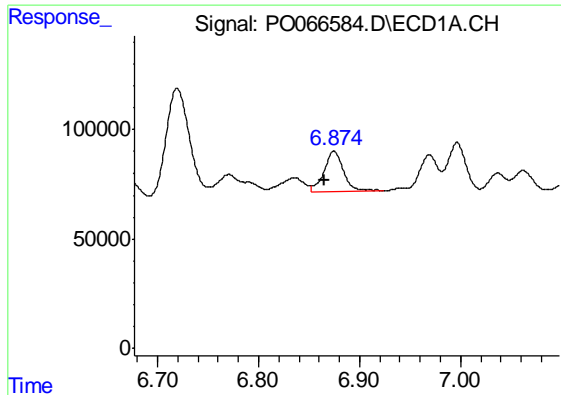
#30 AR-1254-5

R.T.: 7.411 min
 Delta R.T.: 0.011 min
 Response: 429801
 Conc: 173.21 ng/ml



#30 AR-1254-5

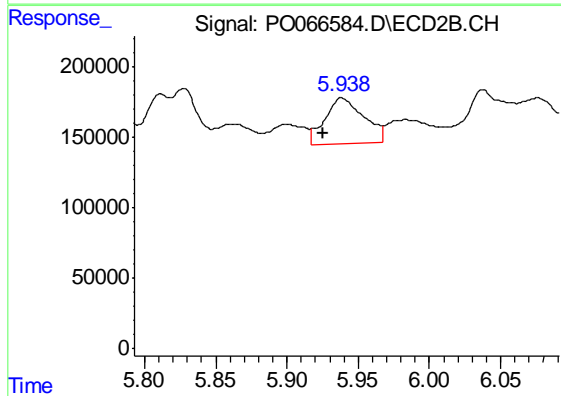
R.T.: 6.449 min
 Delta R.T.: 0.012 min
 Response: 960391
 Conc: 215.73 ng/ml



#31 AR-1260-1

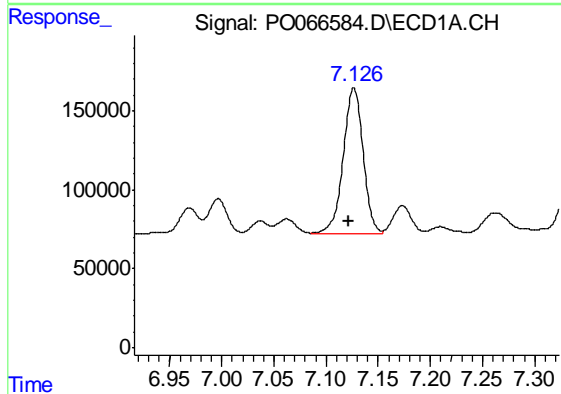
R.T.: 6.875 min
 Delta R.T.: 0.009 min
 Response: 246615
 Conc: 113.85 ng/ml

Instrument :
 ECD_O
 ClientSampleId :
 FK-SF-01-007-A



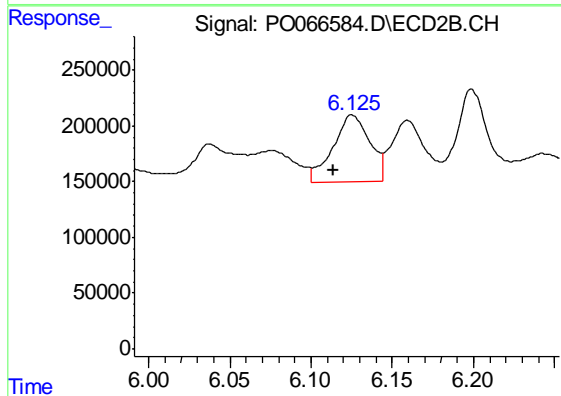
#31 AR-1260-1

R.T.: 5.938 min
 Delta R.T.: 0.013 min
 Response: 624592
 Conc: 212.69 ng/ml



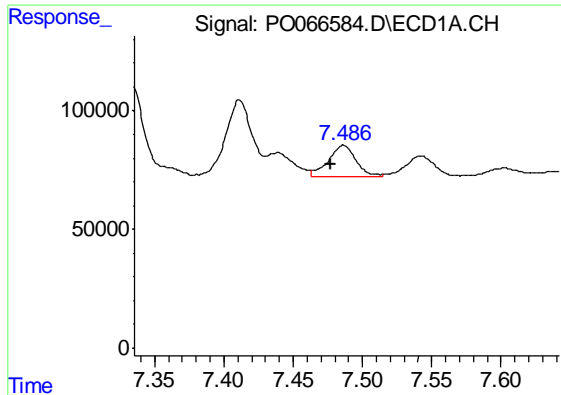
#32 AR-1260-2

R.T.: 7.127 min
 Delta R.T.: 0.005 min
 Response: 1221073
 Conc: 368.84 ng/ml



#32 AR-1260-2

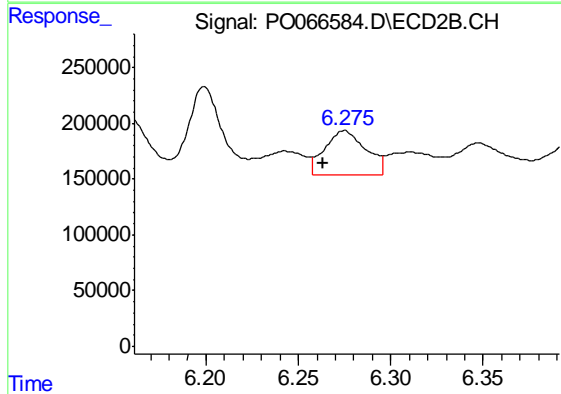
R.T.: 6.125 min
 Delta R.T.: 0.012 min
 Response: 941452
 Conc: 198.04 ng/ml



#33 AR-1260-3

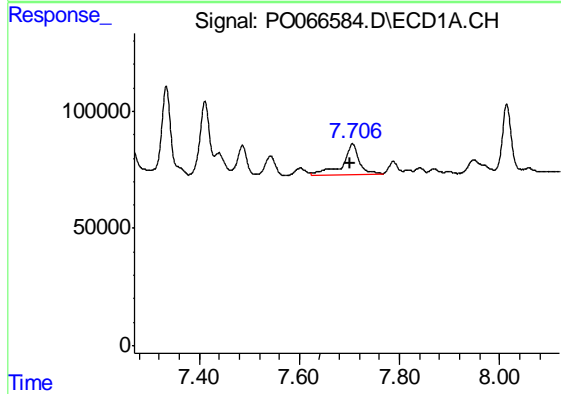
R.T.: 7.486 min
 Delta R.T.: 0.009 min
 Response: 175420
 Conc: 63.53 ng/ml

Instrument :
 ECD_O
 ClientSampleId :
 FK-SF-01-007-A



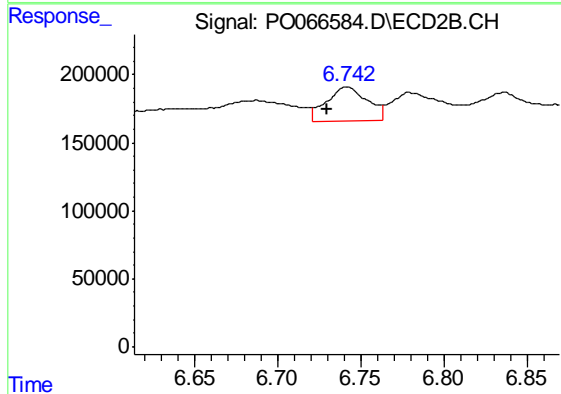
#33 AR-1260-3

R.T.: 6.275 min
 Delta R.T.: 0.012 min
 Response: 619298
 Conc: 154.84 ng/ml



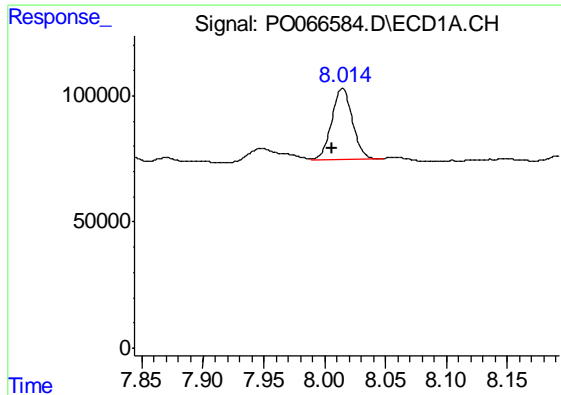
#34 AR-1260-4

R.T.: 7.706 min
 Delta R.T.: 0.005 min
 Response: 306573
 Conc: 118.26 ng/ml



#34 AR-1260-4

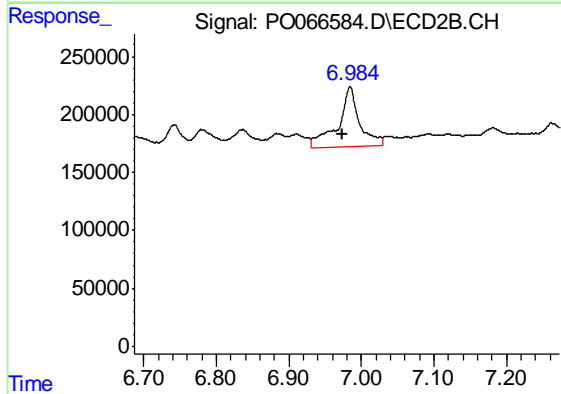
R.T.: 6.742 min
 Delta R.T.: 0.012 min
 Response: 431841
 Conc: 133.88 ng/ml



#35 AR-1260-5

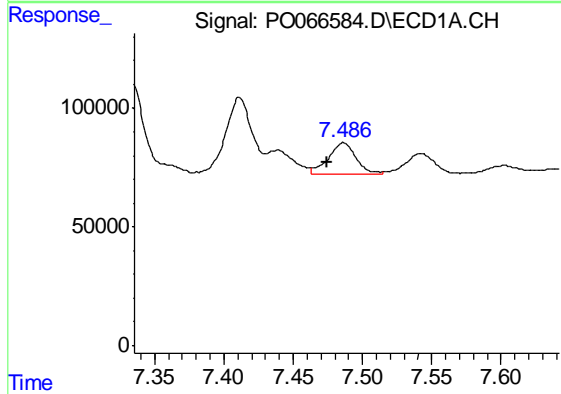
R.T.: 8.015 min
 Delta R.T.: 0.009 min
 Response: 337288
 Conc: 55.31 ng/ml

Instrument :
 ECD_O
 ClientSampleId :
 FK-SF-01-007-A



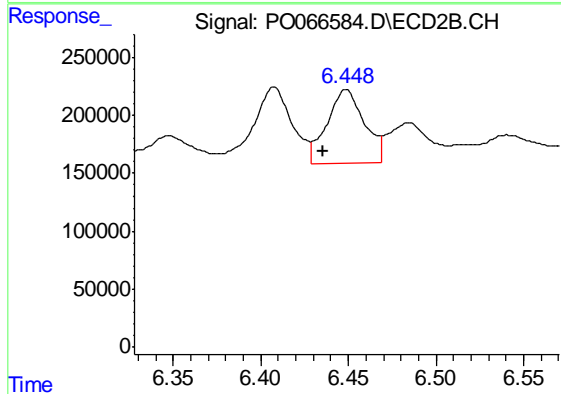
#35 AR-1260-5

R.T.: 6.984 min
 Delta R.T.: 0.011 min
 Response: 1061711
 Conc: 114.57 ng/ml



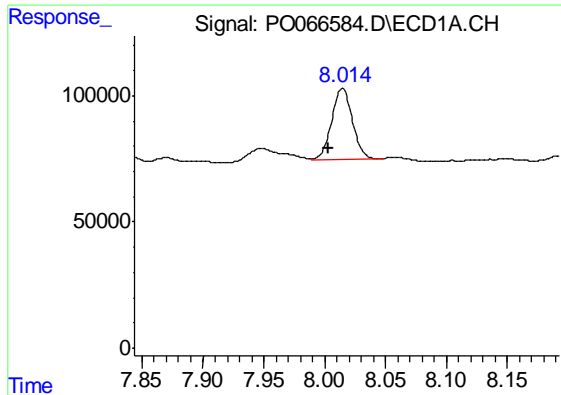
#36 AR-1262-1

R.T.: 7.486 min
 Delta R.T.: 0.012 min
 Response: 175420
 Conc: 44.67 ng/ml



#36 AR-1262-1

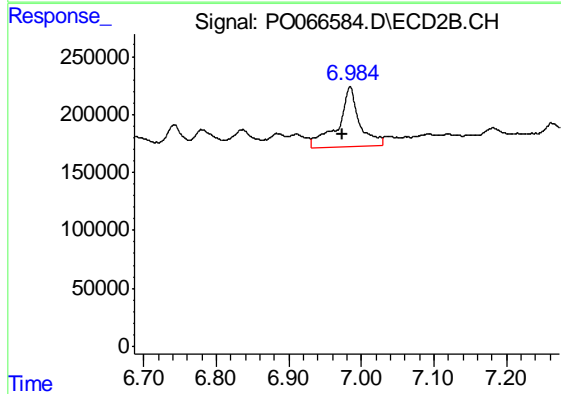
R.T.: 6.449 min
 Delta R.T.: 0.013 min
 Response: 960391
 Conc: 438.19 ng/ml



#37 AR-1262-2

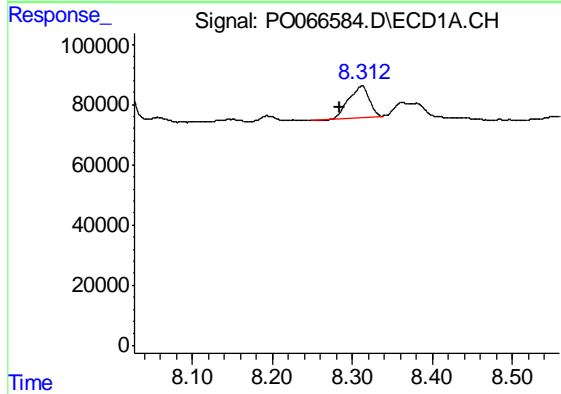
R.T.: 8.015 min
 Delta R.T.: 0.011 min
 Response: 337288
 Conc: 51.77 ng/ml

Instrument :
 ECD_O
 ClientSampleId :
 FK-SF-01-007-A



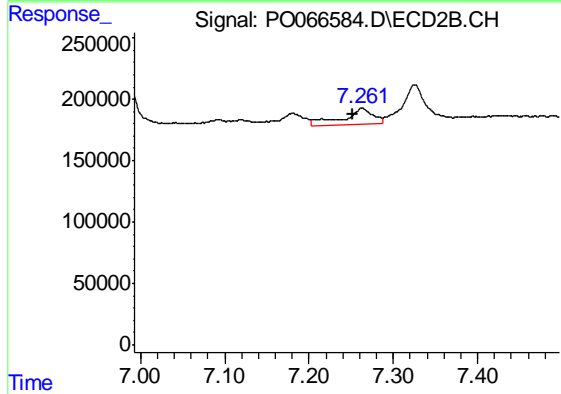
#37 AR-1262-2

R.T.: 6.984 min
 Delta R.T.: 0.011 min
 Response: 1061711
 Conc: 106.41 ng/ml



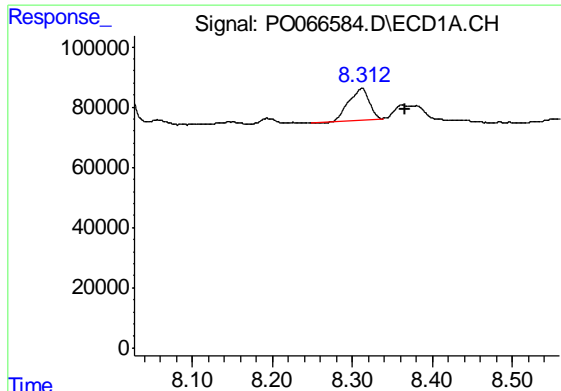
#38 AR-1262-3

R.T.: 8.312 min
 Delta R.T.: 0.028 min
 Response: 184609
 Conc: 43.49 ng/ml



#38 AR-1262-3

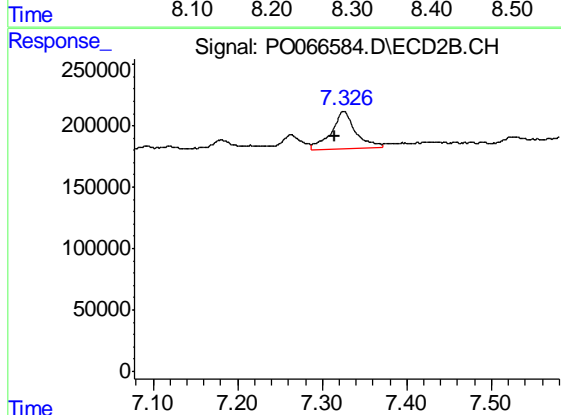
R.T.: 7.263 min
 Delta R.T.: 0.012 min
 Response: 334877
 Conc: 77.51 ng/ml



#39 AR-1262-4

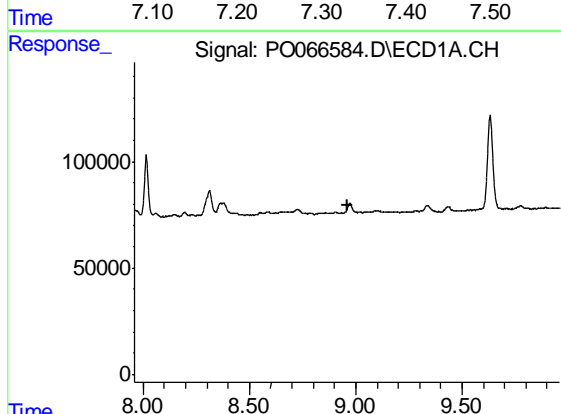
R.T.: 8.312 min
 Delta R.T.: -0.054 min
 Response: 184609
 Conc: 60.12 ng/ml

Instrument :
 ECD_O
 ClientSampleId :
 FK-SF-01-007-A



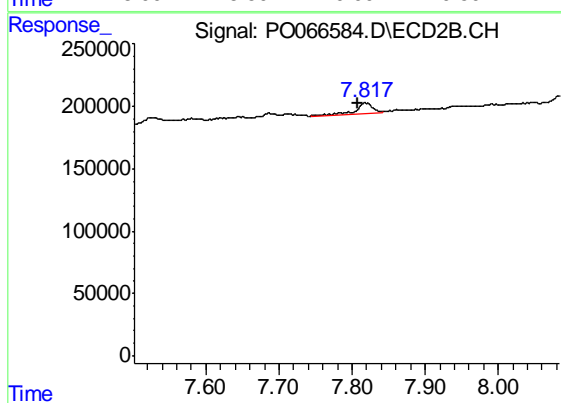
#39 AR-1262-4

R.T.: 7.325 min
 Delta R.T.: 0.010 min
 Response: 612161
 Conc: 88.11 ng/ml



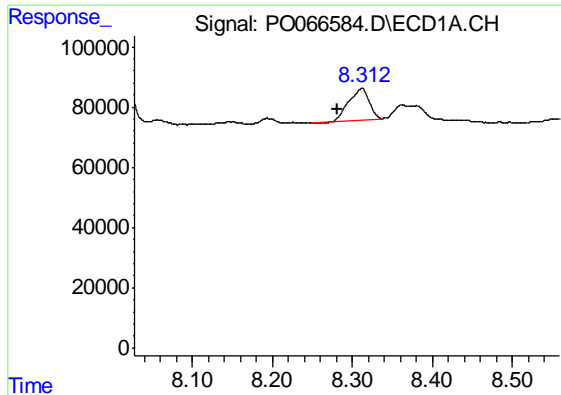
#40 AR-1262-5

R.T.: 0.000 min
 Exp R.T. : 8.958 min
 Response: 0
 Conc: N.D.



#40 AR-1262-5

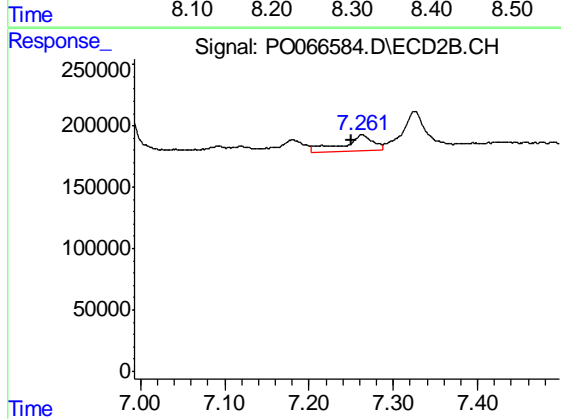
R.T.: 7.818 min
 Delta R.T.: 0.009 min
 Response: 128455
 Conc: 44.77 ng/ml



#41 AR-1268-1

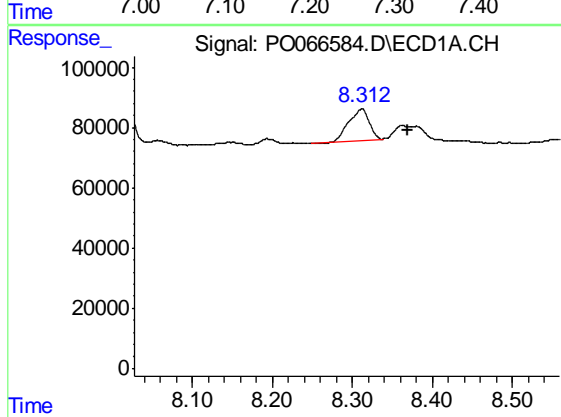
R.T.: 8.312 min
 Delta R.T.: 0.030 min
 Response: 184609
 Conc: 23.60 ng/ml

Instrument :
 ECD_O
 ClientSampleId :
 FK-SF-01-007-A



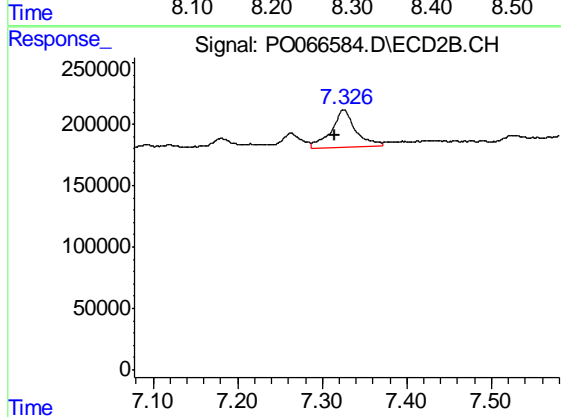
#41 AR-1268-1

R.T.: 7.263 min
 Delta R.T.: 0.013 min
 Response: 334877
 Conc: 28.31 ng/ml



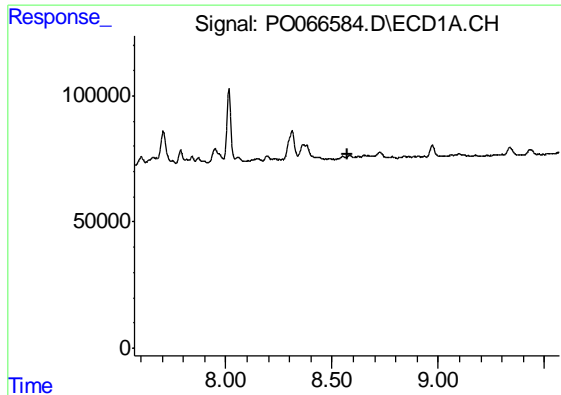
#42 AR-1268-2

R.T.: 8.312 min
 Delta R.T.: -0.056 min
 Response: 184609
 Conc: 28.27 ng/ml



#42 AR-1268-2

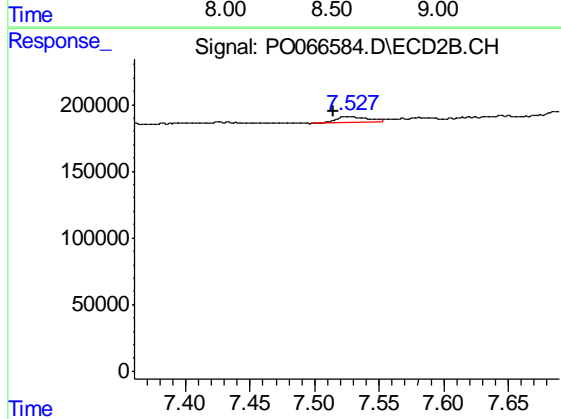
R.T.: 7.325 min
 Delta R.T.: 0.010 min
 Response: 612161
 Conc: 62.23 ng/ml



#43 AR-1268-3

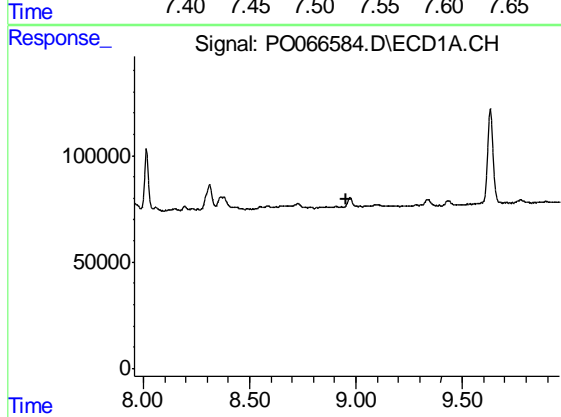
R.T.: 0.000 min
 Exp R.T. : 8.570 min
 Response: 0
 Conc: N.D.

Instrument :
 ECD_O
 ClientSampleId :
 FK-SF-01-007-A



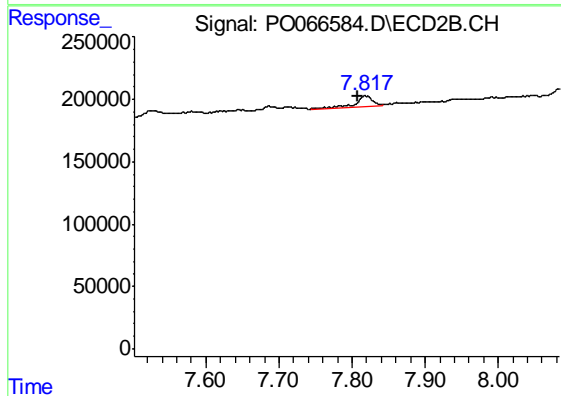
#43 AR-1268-3

R.T.: 7.528 min
 Delta R.T.: 0.013 min
 Response: 76987
 Conc: 9.20 ng/ml



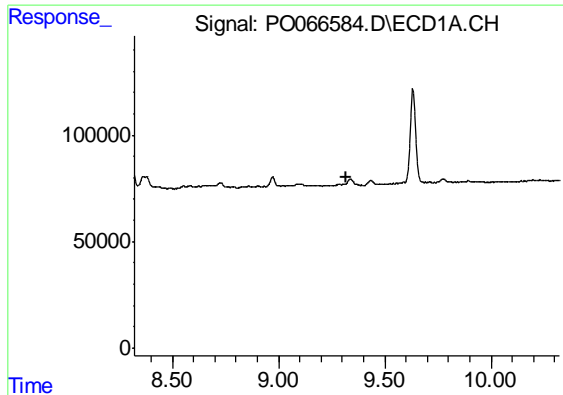
#44 AR-1268-4

R.T.: 0.000 min
 Exp R.T. : 8.957 min
 Response: 0
 Conc: N.D.



#44 AR-1268-4

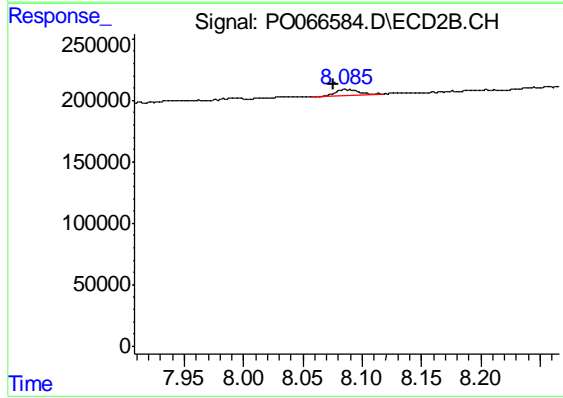
R.T.: 7.818 min
 Delta R.T.: 0.011 min
 Response: 128455
 Conc: 39.65 ng/ml



#45 AR-1268-5

R.T.: 0.000 min
 Exp R.T. : 9.322 min
 Response: 0
 Conc: N.D.

Instrument :
 ECD_O
 ClientSampleId :
 FK-SF-01-007-A



#45 AR-1268-5

R.T.: 8.086 min
 Delta R.T.: 0.009 min
 Response: 80756
 Conc: 3.43 ng/ml