

Data Path : P:\HPCHEM1\ECD_O\Data\PO021918\
 Data File : PO042468.D
 Signal(s) : Signal #1: ECD1A.CH Signal #2: ECD2B.CH
 Acq On : 19 Feb 2018 10:20
 Operator : SM/UA
 Sample : AR1232ICC500
 Misc :
 ALS Vial : 9 Sample Multiplier: 1

Instrument :
 ECD_O
 ClientSampleId :
 AR1232ICC500

Integration File signal 1: autoint1.e
 Integration File signal 2: autoint2.e
 Quant Time: Feb 19 12:15:51 2018
 Quant Method : P:\HPCHEM1\ECD_O\PO021918.M
 Quant Title : GC EXTRACTABLES
 QLast Update : Mon Feb 19 12:06:30 2018
 Response via : Initial Calibration
 Integrator: ChemStation 6890 Scale Mode: Small noise peaks clipped

Volume Inj. : 2 µl
 Signal #1 Phase : ZB-MR1 Signal #2 Phase: ZB-MR2
 Signal #1 Info : 30Mx0.32mmx 0.50µ Signal #2 Info : 30M x 0.32mm x 0.25µm

Compound	RT#1	RT#2	Resp#1	Resp#2	ng/ml	ng/ml

System Monitoring Compounds						
1) SA Tetrachlo...	4.085	3.322	44073354	57456153	50.000	50.000
2) SA Decachlor...	9.489	8.140	35590981	44648193	50.000	50.000
Target Compounds						
11) L3 AR-1232-1	4.448	3.687	7300550	9087096	500.000	500.000
12) L3 AR-1232-2	5.224	4.387	4648023	16098732	500.000	500.000
13) L3 AR-1232-3	5.244	4.443	7679084	6706135	500.000	500.000
14) L3 AR-1232-4	5.306	4.558	4476907	4702766	500.000	500.000
15) L3 AR-1232-5	5.401	4.601	3610384	3225826	500.000	500.000

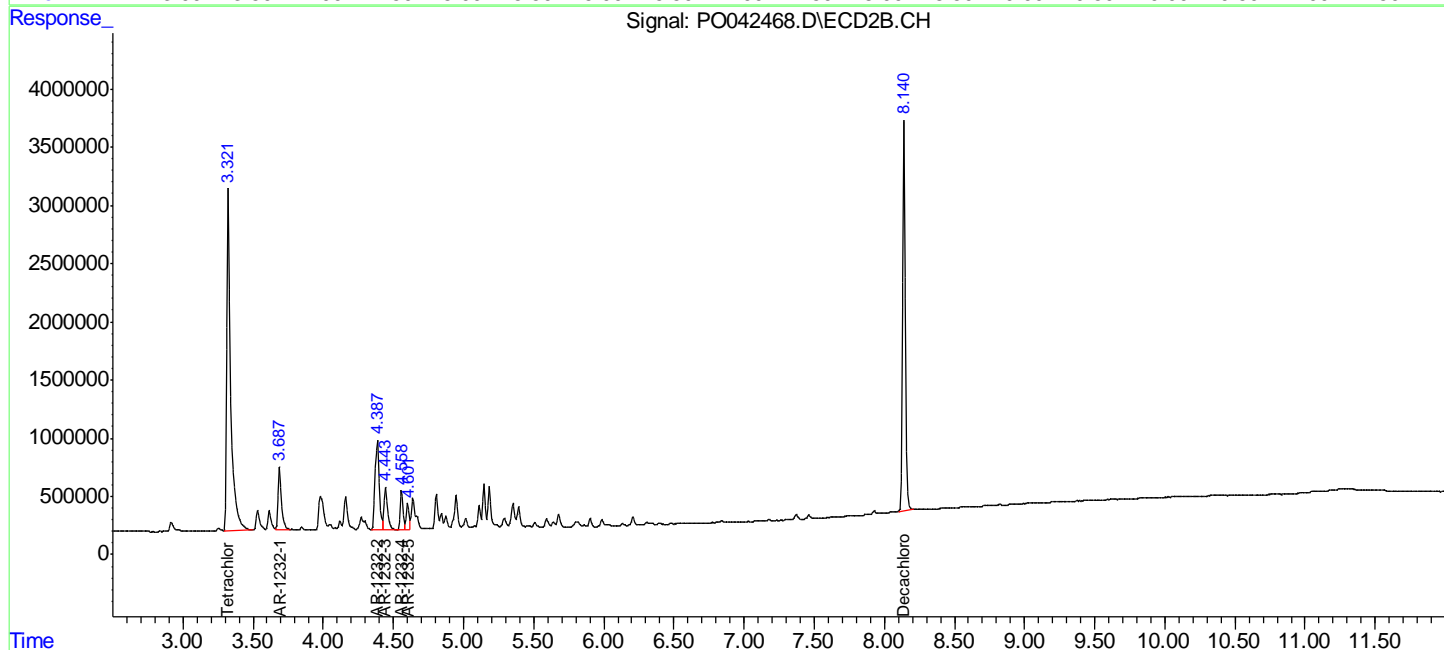
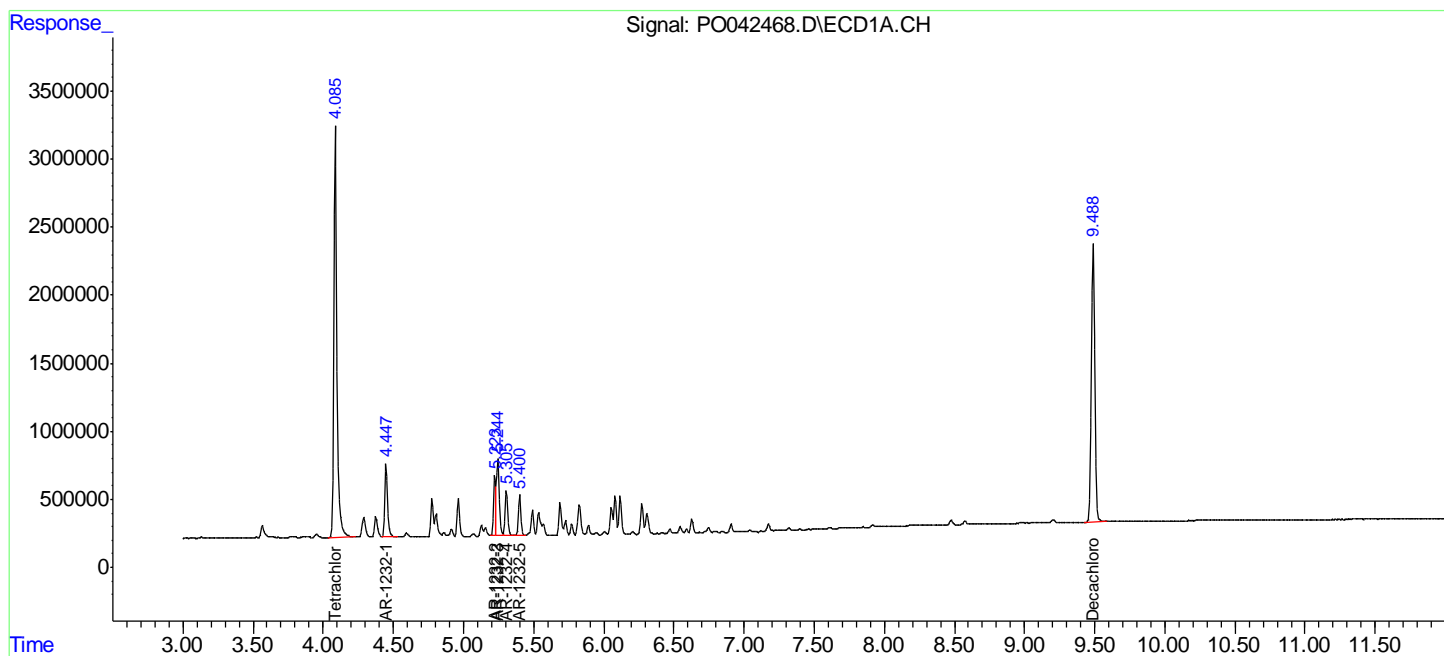
(f)=RT Delta > 1/2 Window (#)=Amounts differ by > 25% (m)=manual int.

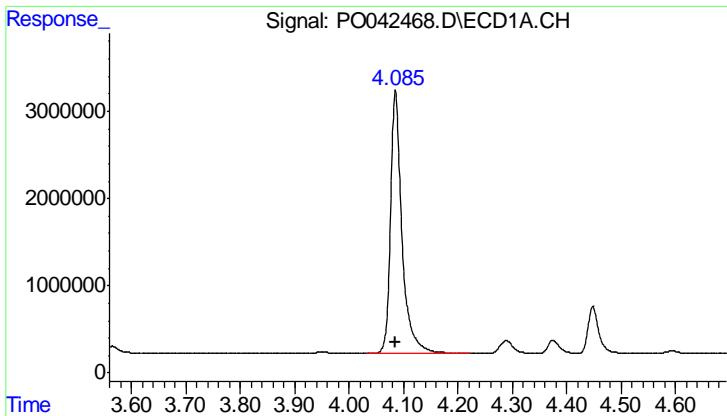
Data Path : P:\HPCHEM1\ECD_O\Data\PO021918\
 Data File : PO042468.D
 Signal(s) : Signal #1: ECD1A.CH Signal #2: ECD2B.CH
 Acq On : 19 Feb 2018 10:20
 Operator : SM/UA
 Sample : AR1232ICC500
 Misc :
 ALS Vial : 9 Sample Multiplier: 1

Instrument :
 ECD_O
 ClientSampleId :
 AR1232ICC500

Integration File signal 1: autoint1.e
 Integration File signal 2: autoint2.e
 Quant Time: Feb 19 12:15:51 2018
 Quant Method : P:\HPCHEM1\ECD_O\PO021918.M
 Quant Title : GC EXTRACTABLES
 QLast Update : Mon Feb 19 12:06:30 2018
 Response via : Initial Calibration
 Integrator: ChemStation 6890 Scale Mode: Small noise peaks clipped

Volume Inj. : 2 µl
 Signal #1 Phase : ZB-MR1 Signal #2 Phase: ZB-MR2
 Signal #1 Info : 30Mx0.32mmx 0.50µ Signal #2 Info : 30M x 0.32mm x 0.25µm

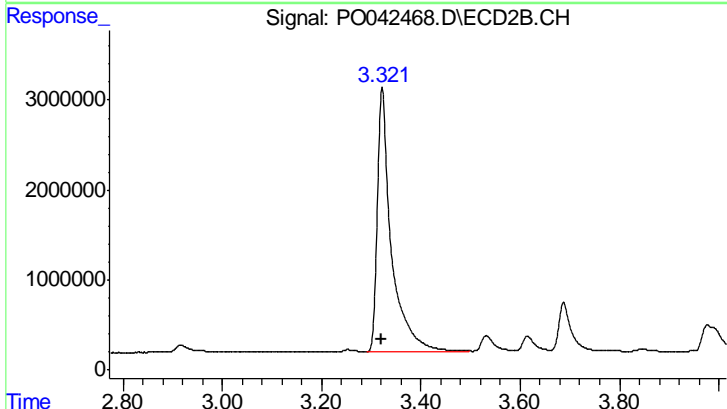




#1 Tetrachloro-m-xylene

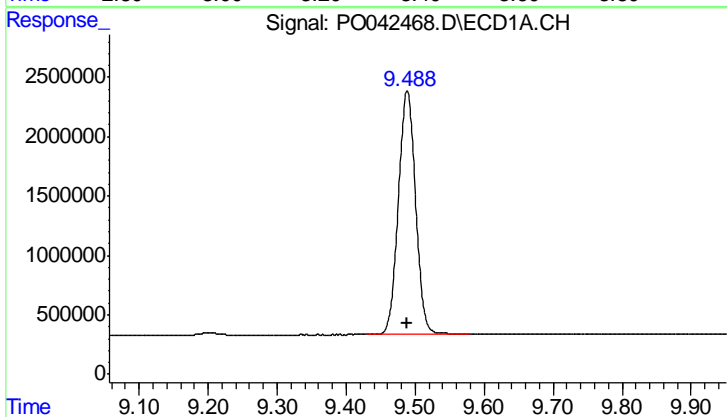
R.T.: 4.085 min
 Delta R.T.: 0.000 min
 Response: 44073354
 Conc: 50.00 ng/ml

Instrument :
 ECD_O
 ClientSampleId :
 AR1232ICC500



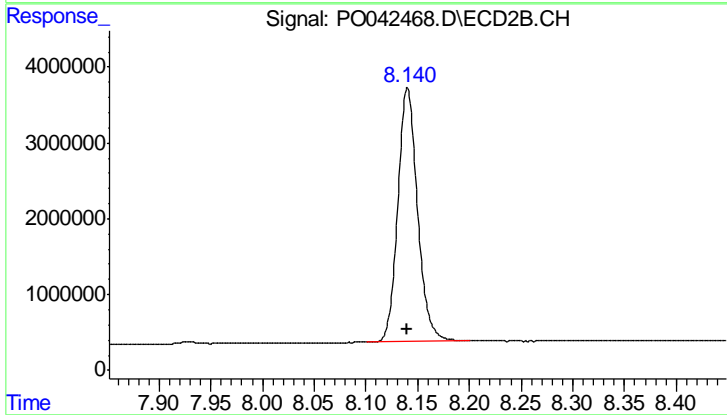
#1 Tetrachloro-m-xylene

R.T.: 3.322 min
 Delta R.T.: 0.000 min
 Response: 57456153
 Conc: 50.00 ng/ml



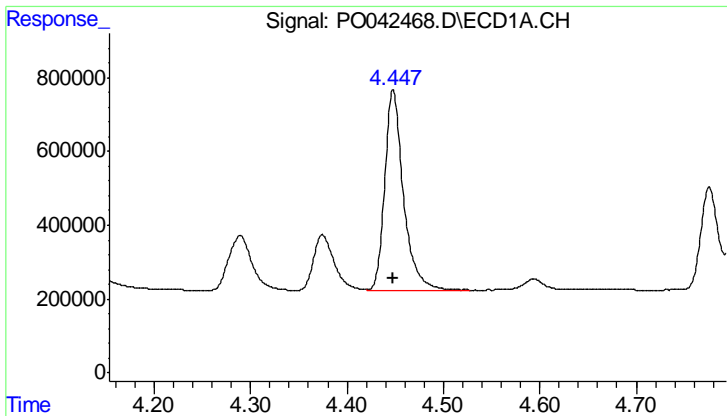
#2 Decachlorobiphenyl

R.T.: 9.489 min
 Delta R.T.: 0.000 min
 Response: 35590981
 Conc: 50.00 ng/ml



#2 Decachlorobiphenyl

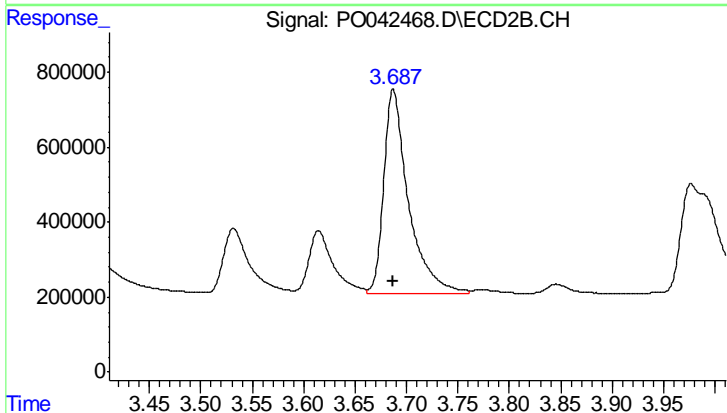
R.T.: 8.140 min
 Delta R.T.: 0.000 min
 Response: 44648193
 Conc: 50.00 ng/ml



#11 AR-1232-1

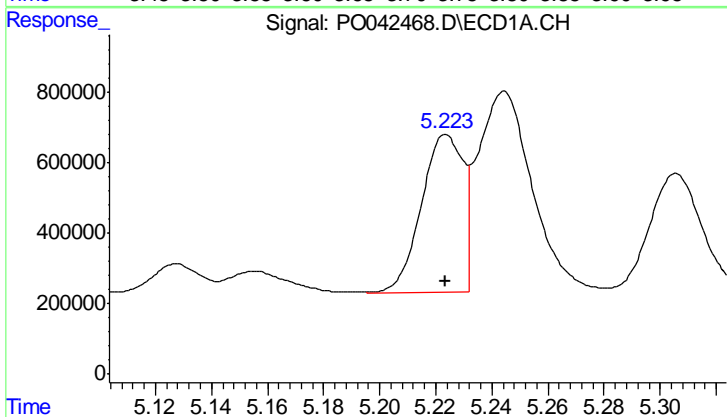
R.T.: 4.448 min
Delta R.T.: 0.000 min
Response: 7300550
Conc: 500.00 ng/ml

Instrument :
ECD_O
ClientSampled :
AR1232ICC500



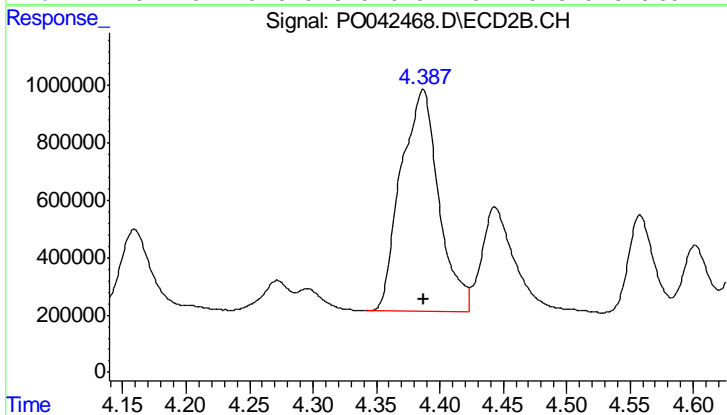
#11 AR-1232-1

R.T.: 3.687 min
Delta R.T.: 0.000 min
Response: 9087096
Conc: 500.00 ng/ml



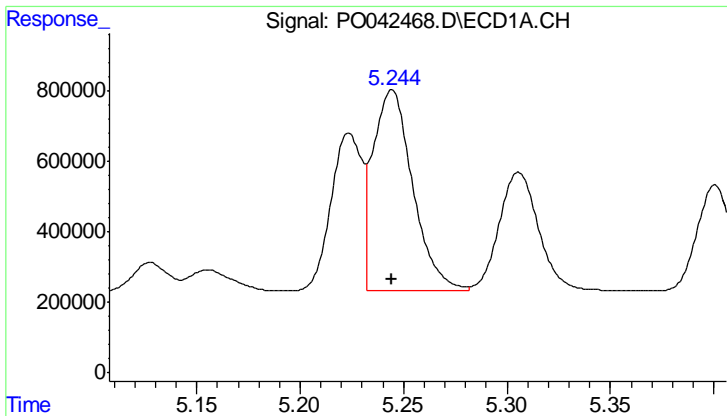
#12 AR-1232-2

R.T.: 5.224 min
Delta R.T.: 0.000 min
Response: 4648023
Conc: 500.00 ng/ml



#12 AR-1232-2

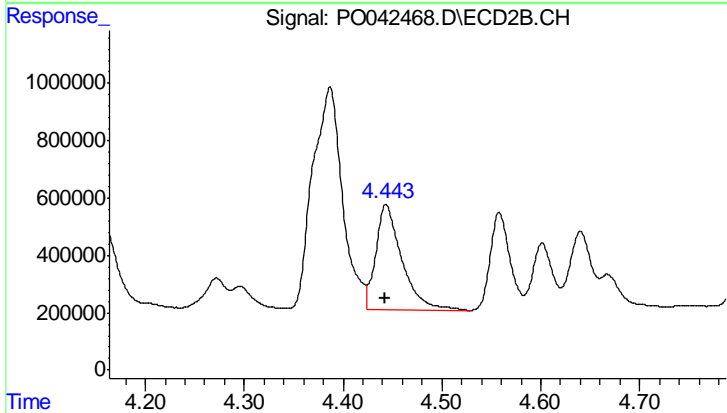
R.T.: 4.387 min
Delta R.T.: 0.000 min
Response: 16098732
Conc: 500.00 ng/ml



#13 AR-1232-3

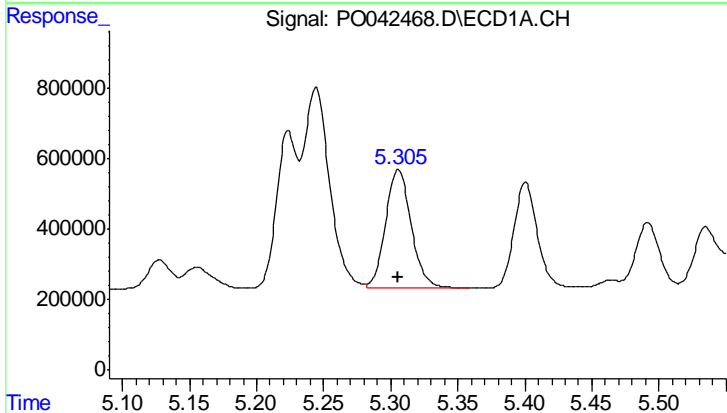
R.T.: 5.244 min
 Delta R.T.: 0.000 min
 Response: 7679084
 Conc: 500.00 ng/ml

Instrument :
 ECD_O
 ClientSampled :
 AR1232ICC500



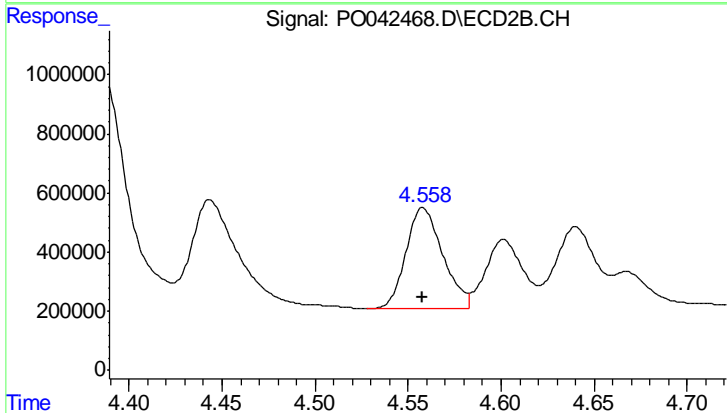
#13 AR-1232-3

R.T.: 4.443 min
 Delta R.T.: 0.000 min
 Response: 6706135
 Conc: 500.00 ng/ml



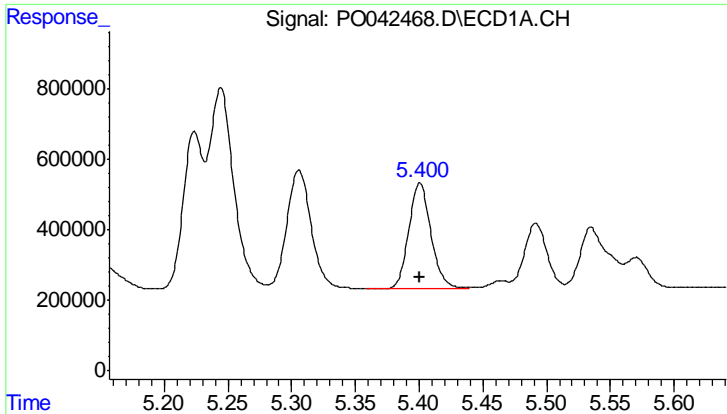
#14 AR-1232-4

R.T.: 5.306 min
 Delta R.T.: 0.000 min
 Response: 4476907
 Conc: 500.00 ng/ml



#14 AR-1232-4

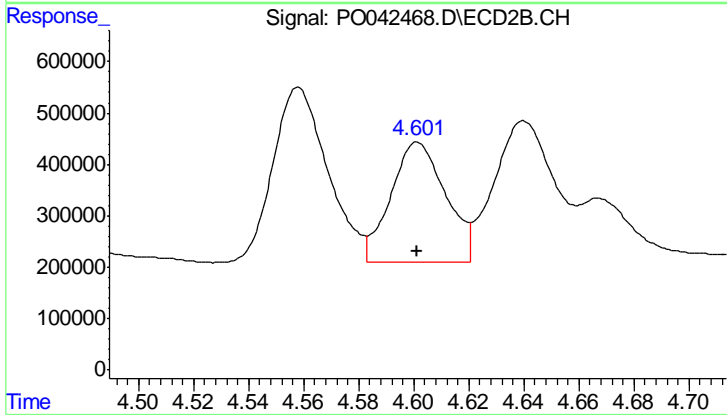
R.T.: 4.558 min
 Delta R.T.: 0.000 min
 Response: 4702766
 Conc: 500.00 ng/ml



#15 AR-1232-5

R.T.: 5.401 min
 Delta R.T.: 0.000 min
 Response: 3610384
 Conc: 500.00 ng/ml

Instrument :
 ECD_O
 ClientSampled :
 AR1232ICC500



#15 AR-1232-5

R.T.: 4.601 min
 Delta R.T.: 0.000 min
 Response: 3225826
 Conc: 500.00 ng/ml