

Data Path : P:\HPCHEM1\ECD_O\Data\PO021918\
 Data File : PO042464.D
 Signal(s) : Signal #1: ECD1A.CH Signal #2: ECD2B.CH
 Acq On : 19 Feb 2018 9:20
 Operator : SM/UA
 Sample : AR1660ICC500
 Misc :
 ALS Vial : 5 Sample Multiplier: 1

Instrument :
 ECD_O
 ClientSampleId :
 AR1660ICC500

Integration File signal 1: autoint1.e
 Integration File signal 2: autoint2.e
 Quant Time: Feb 19 10:52:42 2018
 Quant Method : P:\HPCHEM1\ECD_O\PO021918.M
 Quant Title : GC EXTRACTABLES
 QLast Update : Mon Feb 19 10:07:36 2018
 Response via : Initial Calibration
 Integrator: ChemStation 6890 Scale Mode: Small noise peaks clipped

Volume Inj. : 2 µl
 Signal #1 Phase : ZB-MR1 Signal #2 Phase: ZB-MR2
 Signal #1 Info : 30Mx0.32mmx 0.50µ Signal #2 Info : 30M x 0.32mm x 0.25µm

Compound	RT#1	RT#2	Resp#1	Resp#2	ng/ml	ng/ml

System Monitoring Compounds						
1) SA Tetrachlo...	4.085	3.321	41951330	54571595	50.000	50.000
2) SA Decachlor...	9.487	8.139	33552325	41563081	50.000	50.000
Target Compounds						
3) L1 AR-1016-1	4.962	4.158	9815696	12114642	500.000	500.000
4) L1 AR-1016-2	5.305	4.600	12585928	10193151	500.000	500.000
5) L1 AR-1016-3	5.400	4.639	10452435	12691244	500.000	500.000
6) L1 AR-1016-4	5.688	4.805	9407403	13248276	500.000	500.000
7) L1 AR-1016-5	5.825	5.143	10182314	13225522	500.000	500.000
31) L7 AR-1260-1	6.789	5.803	18181029	27813652	500.000	500.000
32) L7 AR-1260-2	7.041	5.990	24789546	39925590	500.000	500.000
33) L7 AR-1260-3	7.316	6.135	28605872	32717496	500.000	500.000
34) L7 AR-1260-4	7.395	6.307	20232254	39391777	500.000	500.000
35) L7 AR-1260-5	7.916	6.838	49486237	78146096	500.000	500.000

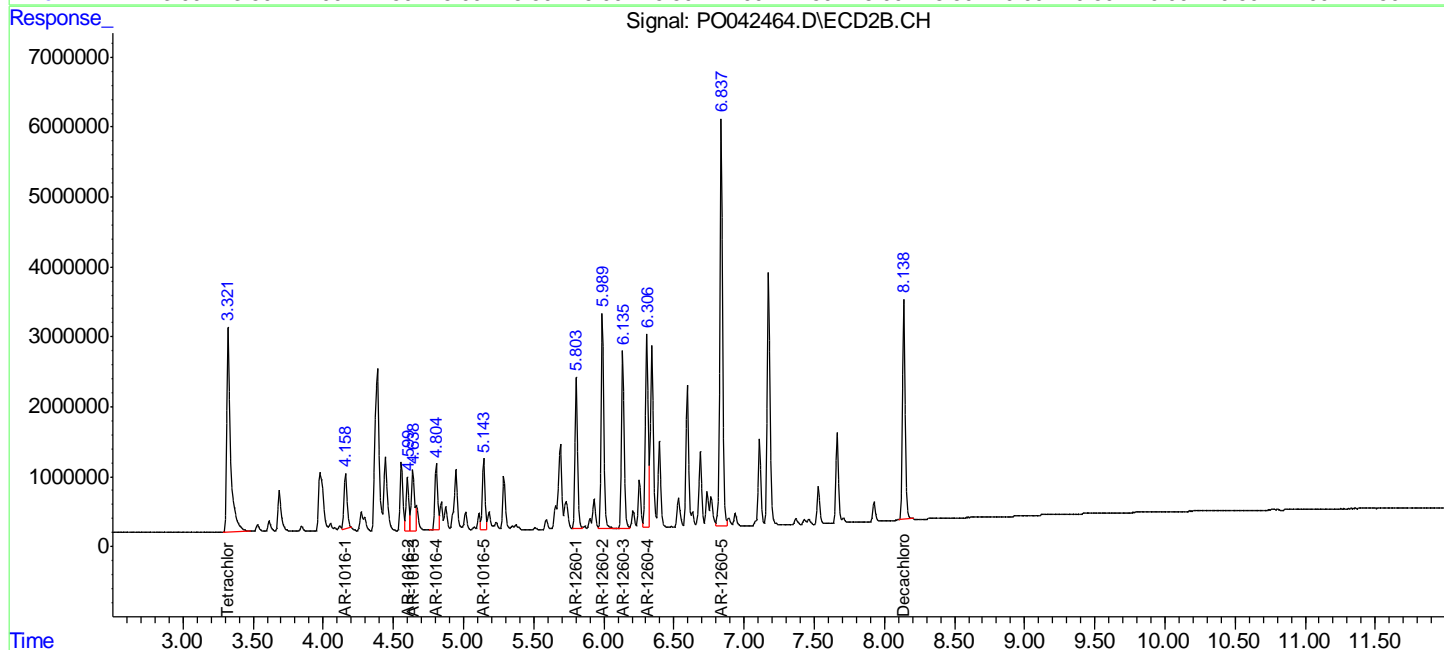
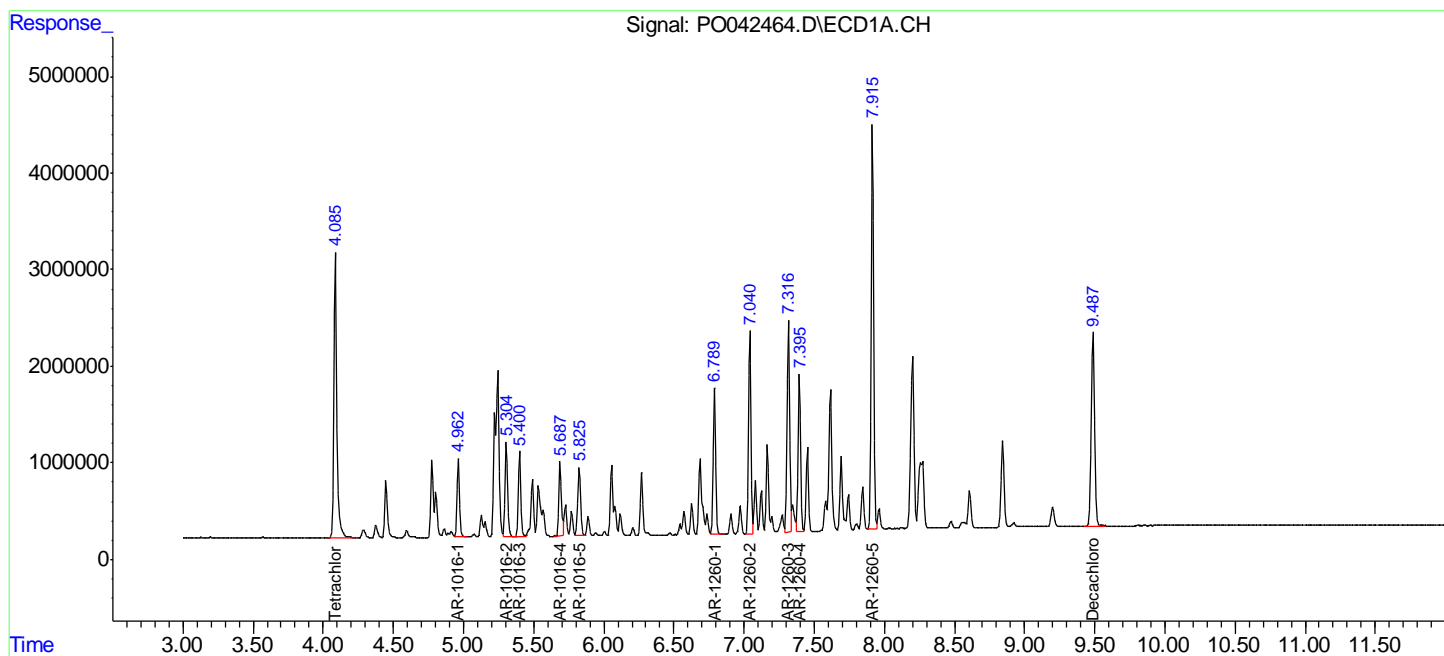
(f)=RT Delta > 1/2 Window (#)=Amounts differ by > 25% (m)=manual int.

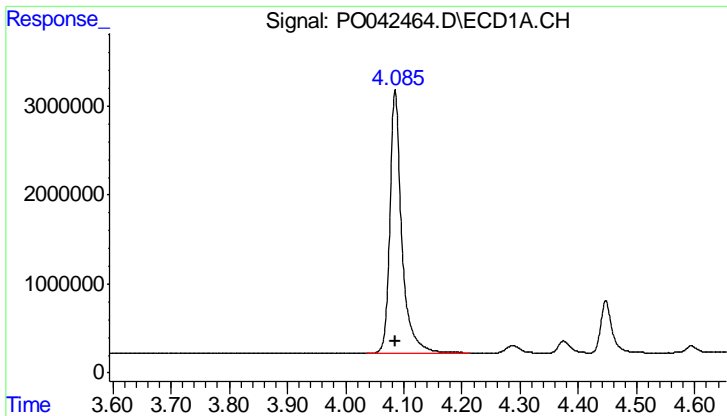
Data Path : P:\HPCHEM1\ECD_O\Data\PO021918\
 Data File : PO042464.D
 Signal(s) : Signal #1: ECD1A.CH Signal #2: ECD2B.CH
 Acq On : 19 Feb 2018 9:20
 Operator : SM/UA
 Sample : AR1660ICC500
 Misc :
 ALS Vial : 5 Sample Multiplier: 1

Instrument :
 ECD_O
 ClientSampled :
 AR1660ICC500

Integration File signal 1: autoint1.e
 Integration File signal 2: autoint2.e
 Quant Time: Feb 19 10:52:42 2018
 Quant Method : P:\HPCHEM1\ECD_O\PO021918.M
 Quant Title : GC EXTRACTABLES
 QLast Update : Mon Feb 19 10:07:36 2018
 Response via : Initial Calibration
 Integrator: ChemStation 6890 Scale Mode: Small noise peaks clipped

Volume Inj. : 2 µl
 Signal #1 Phase : ZB-MR1 Signal #2 Phase: ZB-MR2
 Signal #1 Info : 30Mx0.32mmx 0.50µ Signal #2 Info : 30M x 0.32mm x 0.25µm

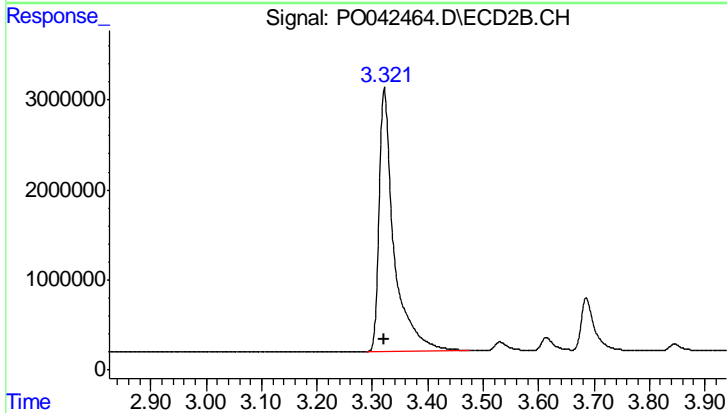




#1 Tetrachloro-m-xylene

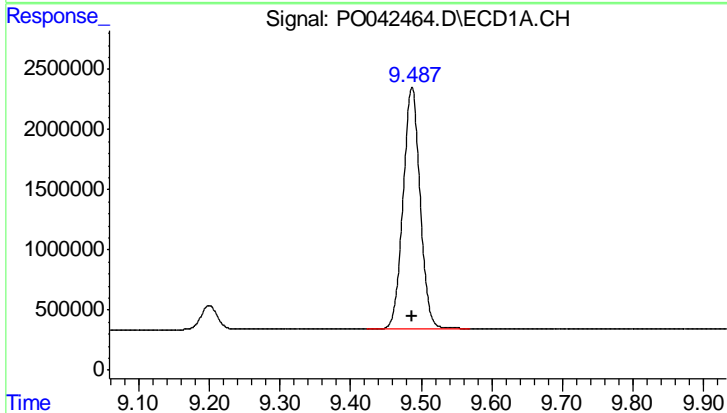
R.T.: 4.085 min
 Delta R.T.: 0.000 min
 Response: 41951330
 Conc: 50.00 ng/ml

Instrument :
 ECD_O
 ClientSampled :
 AR1660ICC500



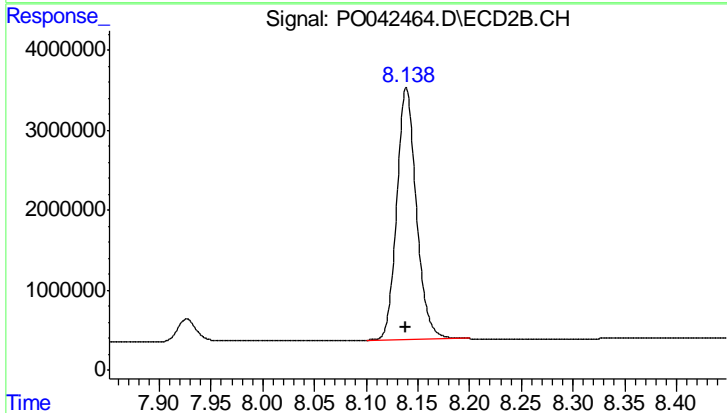
#1 Tetrachloro-m-xylene

R.T.: 3.321 min
 Delta R.T.: 0.000 min
 Response: 54571595
 Conc: 50.00 ng/ml



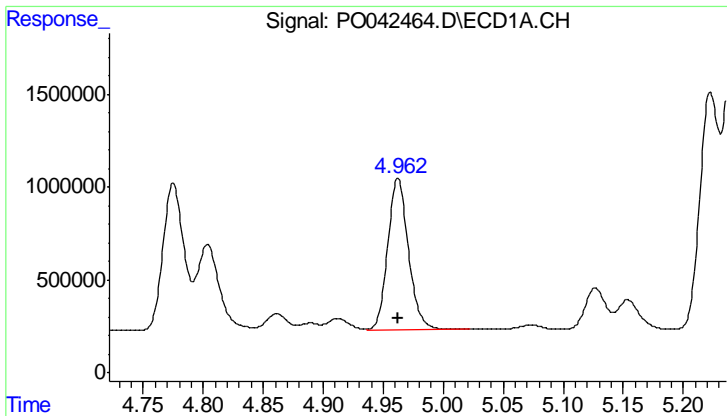
#2 Decachlorobiphenyl

R.T.: 9.487 min
 Delta R.T.: 0.000 min
 Response: 33552325
 Conc: 50.00 ng/ml



#2 Decachlorobiphenyl

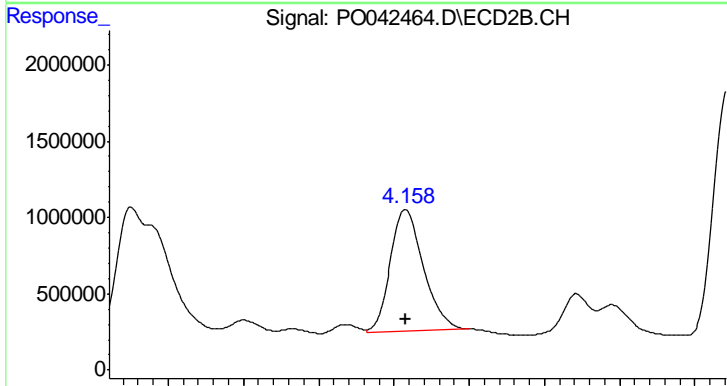
R.T.: 8.139 min
 Delta R.T.: 0.000 min
 Response: 41563081
 Conc: 50.00 ng/ml



#3 AR-1016-1

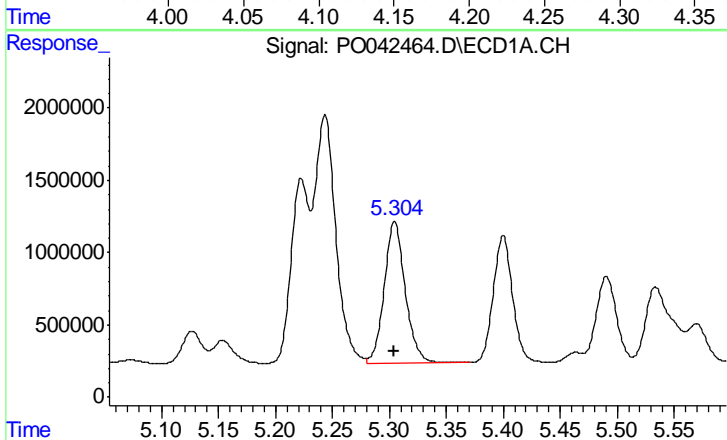
R.T.: 4.962 min
 Delta R.T.: 0.000 min
 Response: 9815696
 Conc: 500.00 ng/ml

Instrument :
 ECD_O
 ClientSampled :
 AR1660ICC500



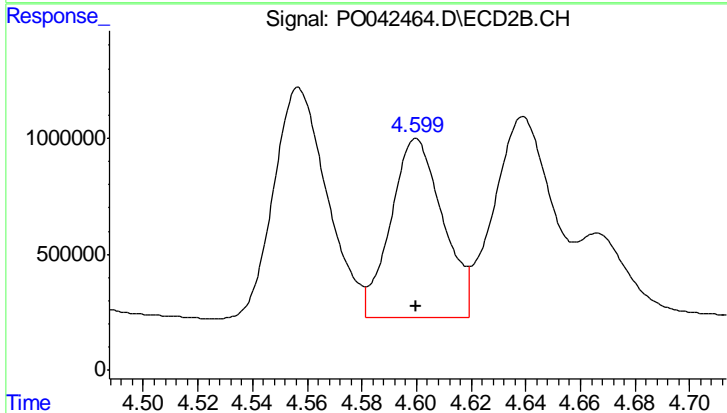
#3 AR-1016-1

R.T.: 4.158 min
 Delta R.T.: 0.000 min
 Response: 12114642
 Conc: 500.00 ng/ml



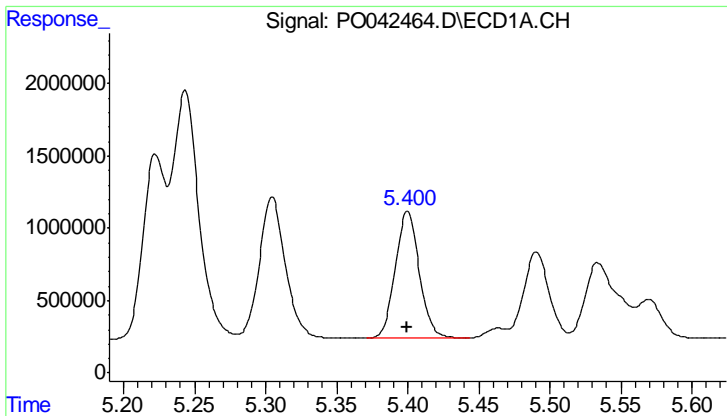
#4 AR-1016-2

R.T.: 5.305 min
 Delta R.T.: 0.000 min
 Response: 12585928
 Conc: 500.00 ng/ml



#4 AR-1016-2

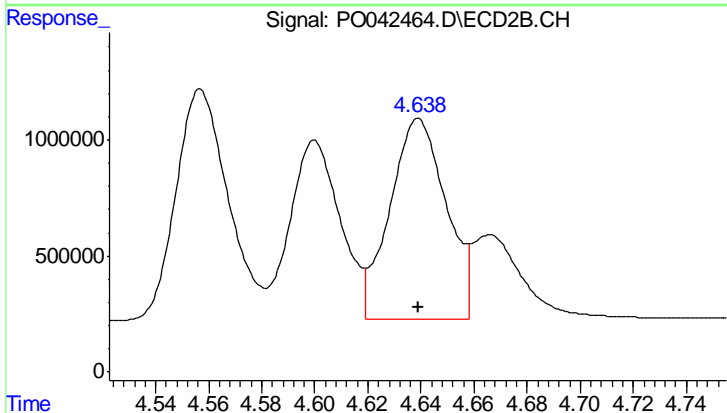
R.T.: 4.600 min
 Delta R.T.: 0.000 min
 Response: 10193151
 Conc: 500.00 ng/ml



#5 AR-1016-3

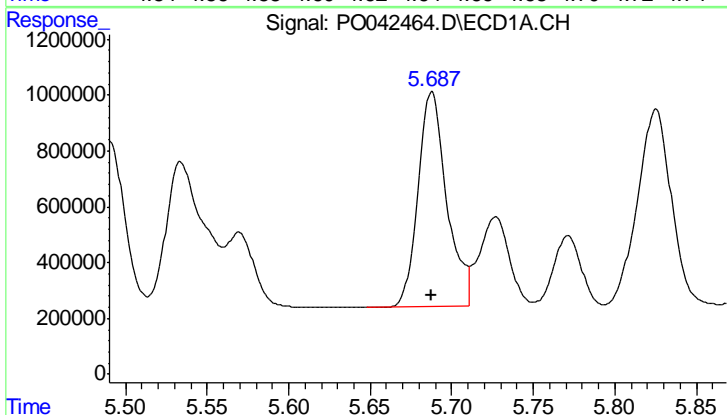
R.T.: 5.400 min
 Delta R.T.: 0.000 min
 Response: 10452435
 Conc: 500.00 ng/ml

Instrument :
 ECD_O
 ClientSampled :
 AR1660ICC500



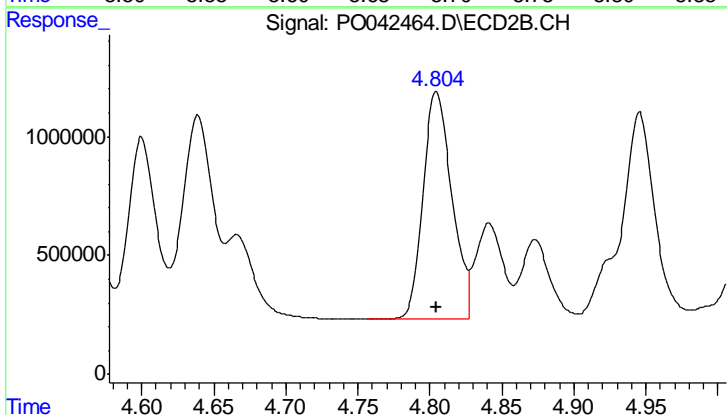
#5 AR-1016-3

R.T.: 4.639 min
 Delta R.T.: 0.000 min
 Response: 12691244
 Conc: 500.00 ng/ml



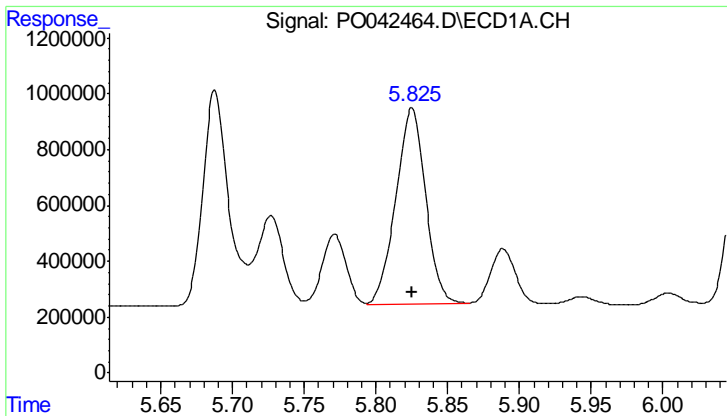
#6 AR-1016-4

R.T.: 5.688 min
 Delta R.T.: 0.000 min
 Response: 9407403
 Conc: 500.00 ng/ml



#6 AR-1016-4

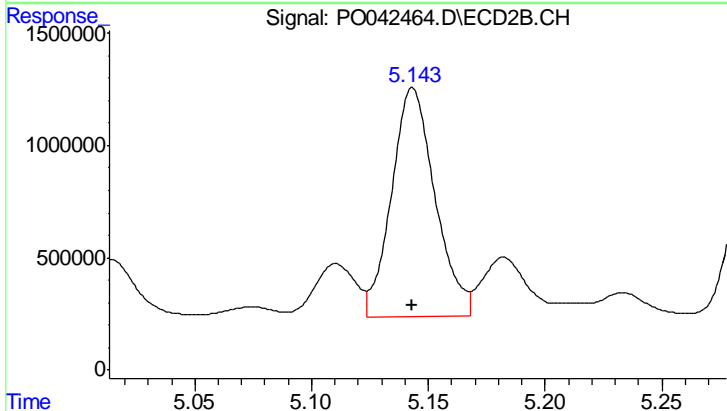
R.T.: 4.805 min
 Delta R.T.: 0.000 min
 Response: 13248276
 Conc: 500.00 ng/ml



#7 AR-1016-5

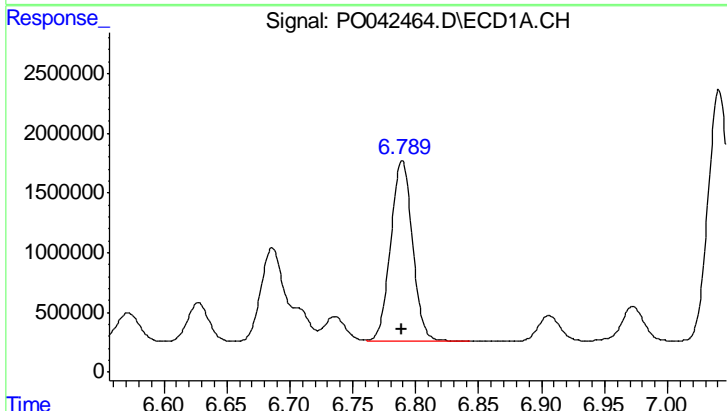
R.T.: 5.825 min
 Delta R.T.: 0.000 min
 Response: 10182314
 Conc: 500.00 ng/ml

Instrument :
 ECD_O
 ClientSampled :
 AR1660ICC500



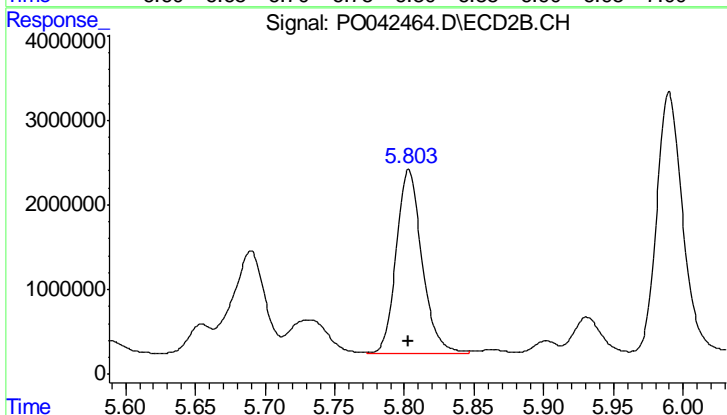
#7 AR-1016-5

R.T.: 5.143 min
 Delta R.T.: 0.000 min
 Response: 13225522
 Conc: 500.00 ng/ml



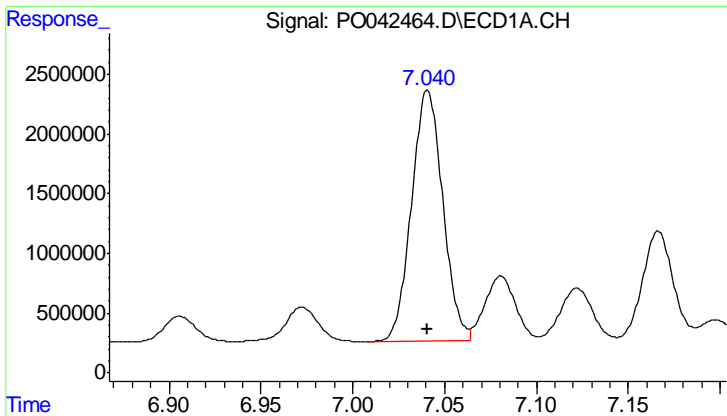
#31 AR-1260-1

R.T.: 6.789 min
 Delta R.T.: 0.000 min
 Response: 18181029
 Conc: 500.00 ng/ml



#31 AR-1260-1

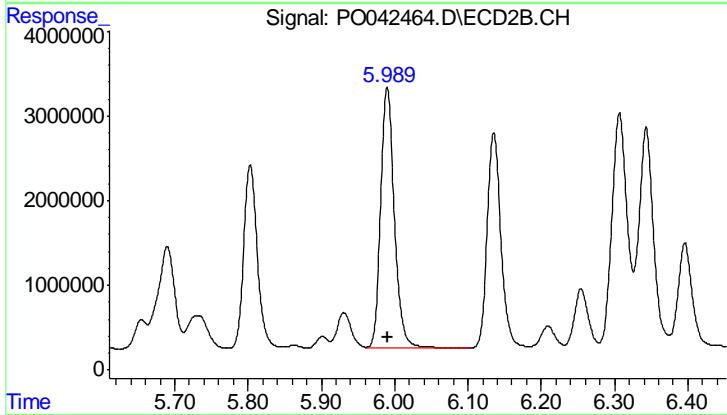
R.T.: 5.803 min
 Delta R.T.: 0.000 min
 Response: 27813652
 Conc: 500.00 ng/ml



#32 AR-1260-2

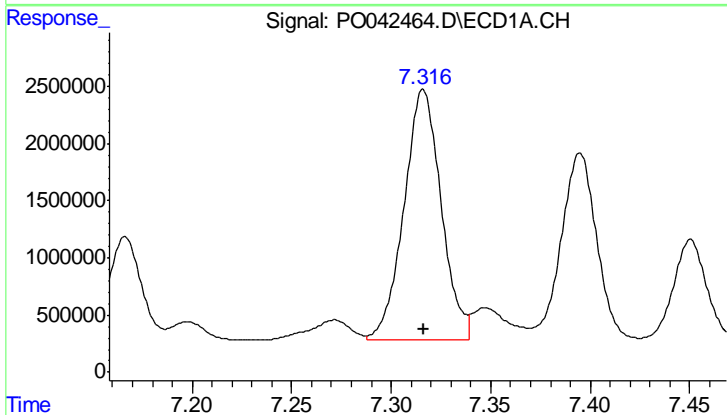
R.T.: 7.041 min
 Delta R.T.: 0.000 min
 Response: 24789546
 Conc: 500.00 ng/ml

Instrument :
 ECD_O
 ClientSampled :
 AR1660ICC500



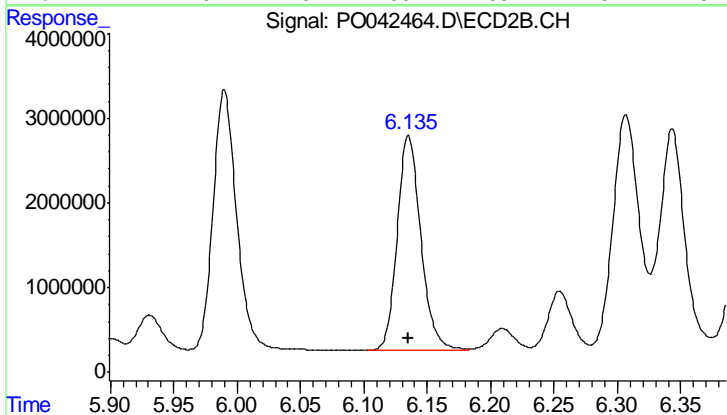
#32 AR-1260-2

R.T.: 5.990 min
 Delta R.T.: 0.000 min
 Response: 39925590
 Conc: 500.00 ng/ml



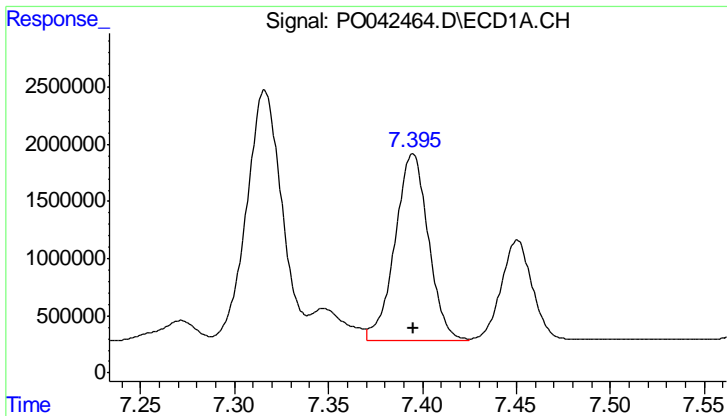
#33 AR-1260-3

R.T.: 7.316 min
 Delta R.T.: 0.000 min
 Response: 28605872
 Conc: 500.00 ng/ml



#33 AR-1260-3

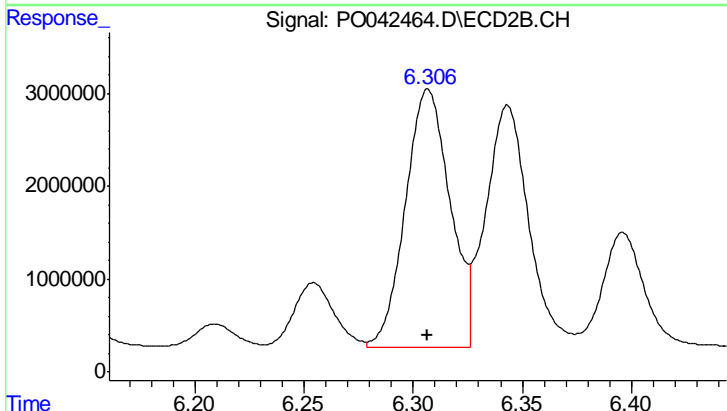
R.T.: 6.135 min
 Delta R.T.: 0.000 min
 Response: 32717496
 Conc: 500.00 ng/ml



#34 AR-1260-4

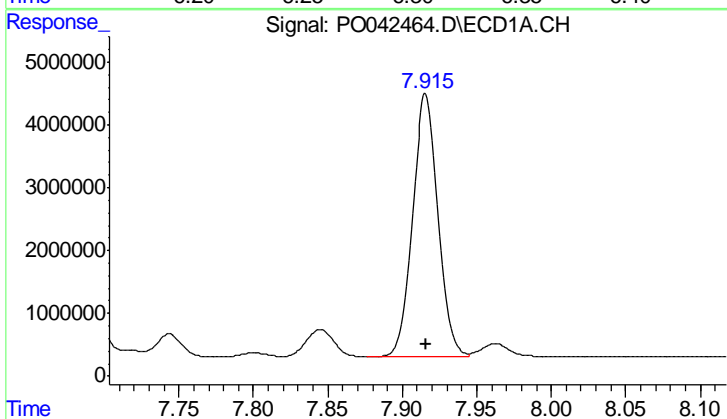
R.T.: 7.395 min
 Delta R.T.: 0.000 min
 Response: 20232254
 Conc: 500.00 ng/ml

Instrument :
 ECD_O
 ClientSampled :
 AR1660ICC500



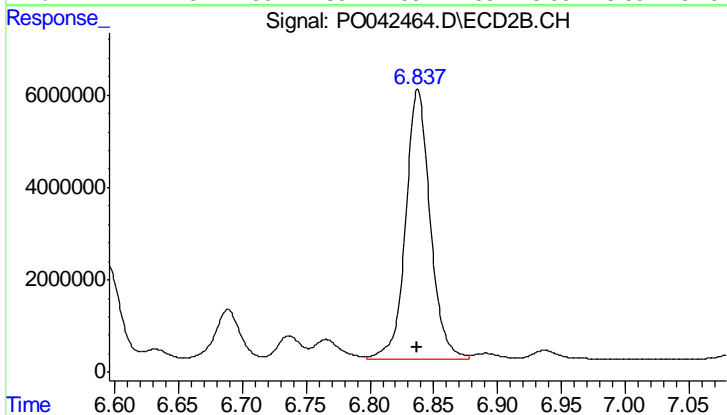
#34 AR-1260-4

R.T.: 6.307 min
 Delta R.T.: 0.000 min
 Response: 39391777
 Conc: 500.00 ng/ml



#35 AR-1260-5

R.T.: 7.916 min
 Delta R.T.: 0.000 min
 Response: 49486237
 Conc: 500.00 ng/ml



#35 AR-1260-5

R.T.: 6.838 min
 Delta R.T.: 0.000 min
 Response: 78146096
 Conc: 500.00 ng/ml