

Data Path : P:\HPCHEM1\ECD\_O\Data\PO021918\  
 Data File : PO042484.D  
 Signal(s) : Signal #1: ECD1A.CH Signal #2: ECD2B.CH  
 Acq On : 19 Feb 2018 17:07  
 Operator : SM/UA  
 Sample : AR1660CCC500  
 Misc :  
 ALS Vial : 3 Sample Multiplier: 1

Instrument :  
 ECD\_O  
 ClientSampleId :  
 AR1660CCC500

Integration File signal 1: autoint1.e  
 Integration File signal 2: autoint2.e  
 Quant Time: Feb 20 04:27:05 2018  
 Quant Method : P:\HPCHEM1\ECD\_O\PO021918.M  
 Quant Title : GC EXTRACTABLES  
 QLast Update : Mon Feb 19 13:19:13 2018  
 Response via : Initial Calibration  
 Integrator: ChemStation 6890 Scale Mode: Small noise peaks clipped

Volume Inj. : 2 µl  
 Signal #1 Phase : ZB-MR1 Signal #2 Phase: ZB-MR2  
 Signal #1 Info : 30Mx0.32mmx 0.50µ Signal #2 Info : 30M x 0.32mm x 0.25µm

Compound	RT#1	RT#2	Resp#1	Resp#2	ng/ml	ng/ml
-----						
System Monitoring Compounds						
1) SA Tetrachlo...	4.085	3.321	41894423	54675605	49.476	50.228
2) SA Decachlor...	9.491	8.139	33932283	42670817	50.704	52.161
Target Compounds						
3) L1 AR-1016-1	4.962	4.157	9808640	12173133	492.140	504.944
4) L1 AR-1016-2	5.305	4.600	12674959	10505412	493.131	490.044
5) L1 AR-1016-3	5.401	4.639	10394559	13003340	487.304	494.215
6) L1 AR-1016-4	5.689	4.805	9517883	13628638	495.362	503.653
7) L1 AR-1016-5	5.825	5.143	10445074	13752628	499.130	525.199
31) L7 AR-1260-1	6.790	5.804	18531398	28157230	501.775	502.601
32) L7 AR-1260-2	7.042	5.990	25312611	40442524	501.310	494.748
33) L7 AR-1260-3	7.317	6.136	29201869	33459715	508.533	513.122
34) L7 AR-1260-4	7.395	6.306	20654341	39884652	514.550	506.009
35) L7 AR-1260-5	7.918	6.837	49624358	79421823	504.396	514.718
-----						

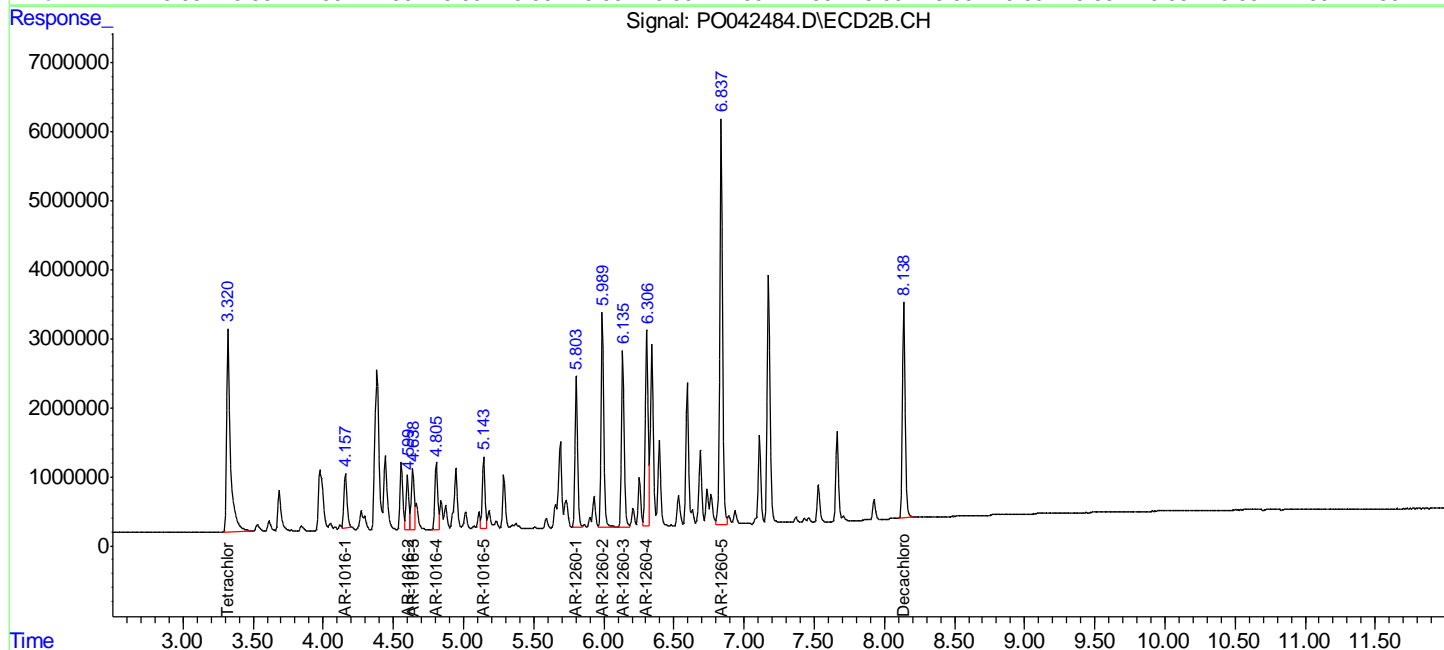
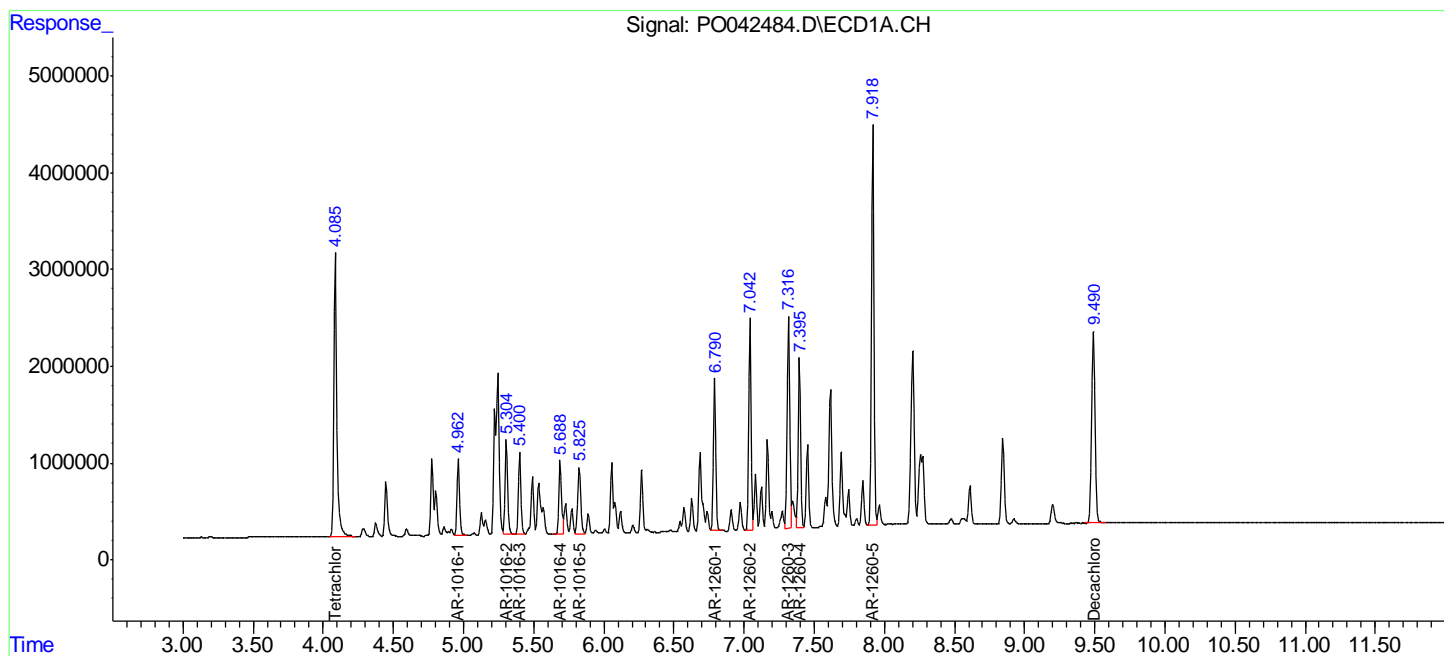
(f)=RT Delta > 1/2 Window (#)=Amounts differ by > 25% (m)=manual int.

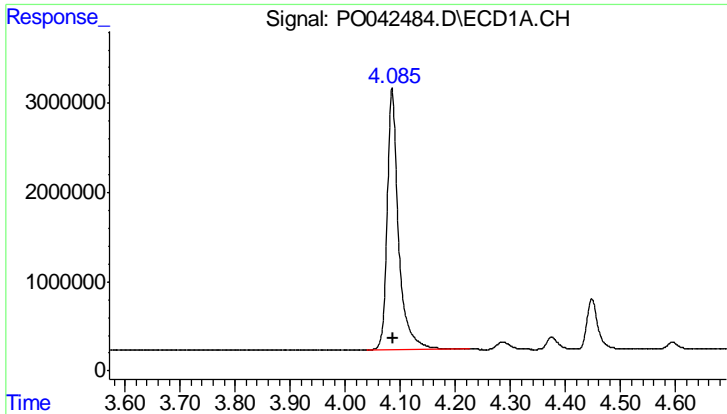
Data Path : P:\HPCHEM1\ECD\_O\Data\PO021918\  
 Data File : PO042484.D  
 Signal(s) : Signal #1: ECD1A.CH Signal #2: ECD2B.CH  
 Acq On : 19 Feb 2018 17:07  
 Operator : SM/UA  
 Sample : AR1660CCC500  
 Misc :  
 ALS Vial : 3 Sample Multiplier: 1

Instrument :  
 ECD\_O  
 ClientSampled :  
 AR1660CCC500

Integration File signal 1: autoint1.e  
 Integration File signal 2: autoint2.e  
 Quant Time: Feb 20 04:27:05 2018  
 Quant Method : P:\HPCHEM1\ECD\_O\PO021918.M  
 Quant Title : GC EXTRACTABLES  
 QLast Update : Mon Feb 19 13:19:13 2018  
 Response via : Initial Calibration  
 Integrator: ChemStation 6890 Scale Mode: Small noise peaks clipped

Volume Inj. : 2 µl  
 Signal #1 Phase : ZB-MR1 Signal #2 Phase: ZB-MR2  
 Signal #1 Info : 30Mx0.32mmx 0.50µ Signal #2 Info : 30M x 0.32mm x 0.25µm

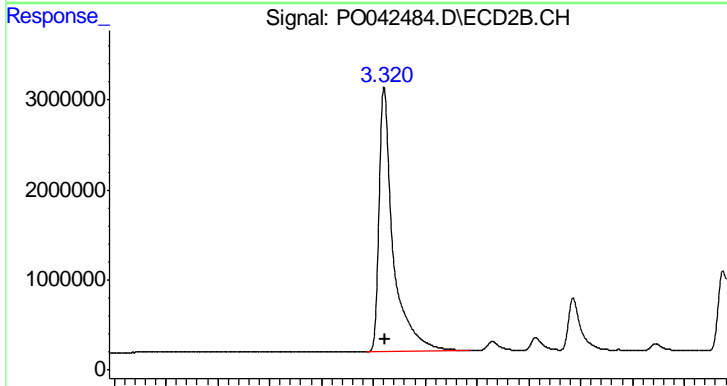




#1 Tetrachloro-m-xylene

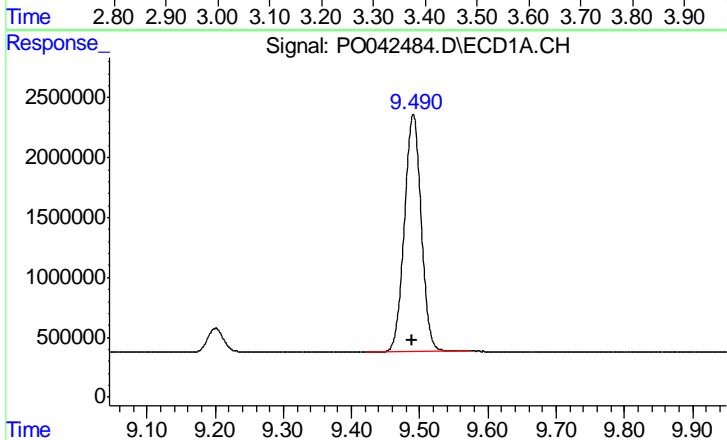
R.T.: 4.085 min  
 Delta R.T.: 0.000 min  
 Response: 41894423  
 Conc: 49.48 ng/ml

Instrument :  
 ECD\_O  
 ClientSampleId :  
 AR1660CCC500



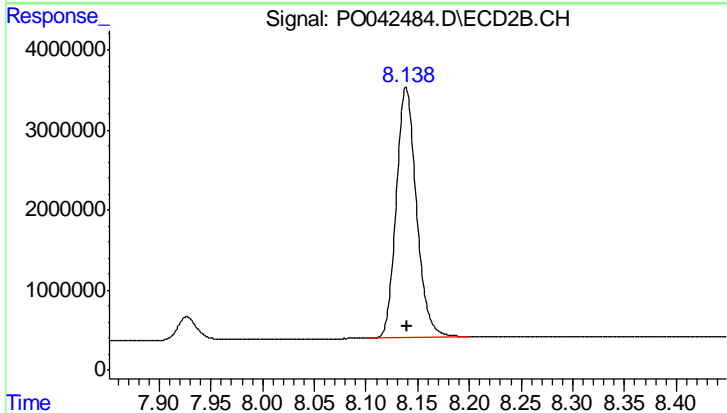
#1 Tetrachloro-m-xylene

R.T.: 3.321 min  
 Delta R.T.: -0.002 min  
 Response: 54675605  
 Conc: 50.23 ng/ml



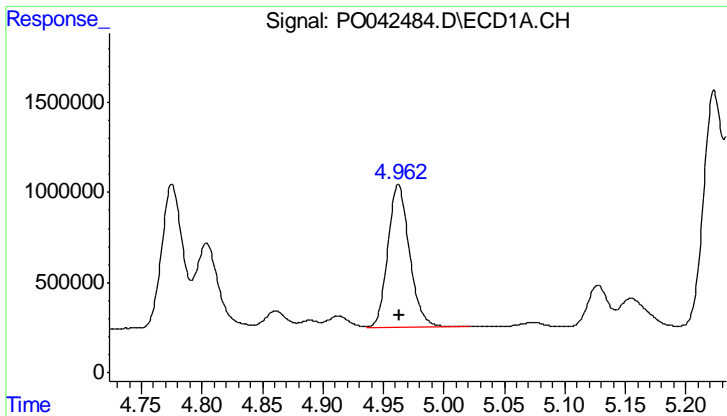
#2 Decachlorobiphenyl

R.T.: 9.491 min  
 Delta R.T.: 0.000 min  
 Response: 33932283  
 Conc: 50.70 ng/ml



#2 Decachlorobiphenyl

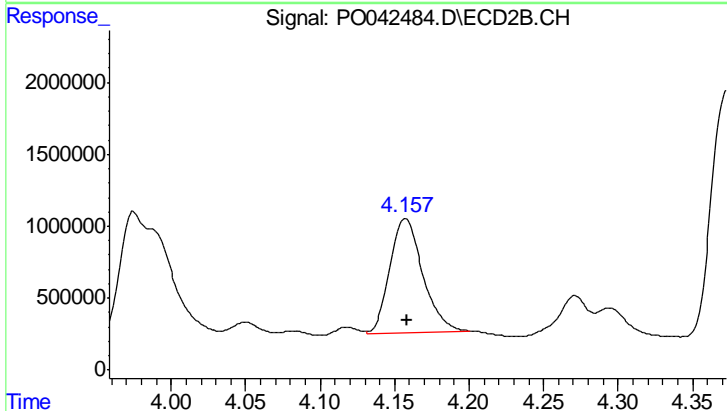
R.T.: 8.139 min  
 Delta R.T.: -0.001 min  
 Response: 42670817  
 Conc: 52.16 ng/ml



#3 AR-1016-1

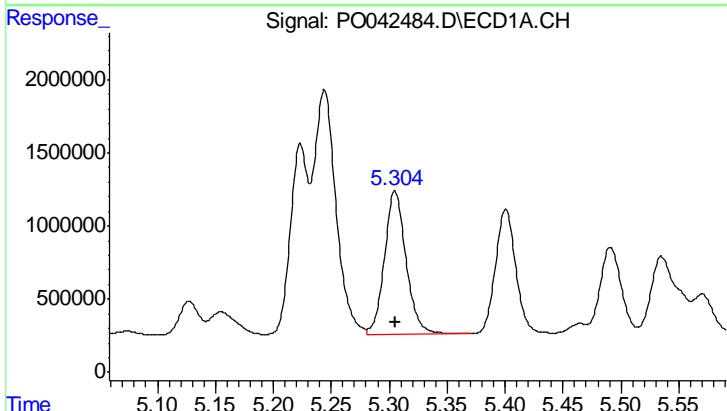
R.T.: 4.962 min  
 Delta R.T.: 0.000 min  
 Response: 9808640  
 Conc: 492.14 ng/ml

Instrument :  
 ECD\_O  
 ClientSampleId :  
 AR1660CCC500



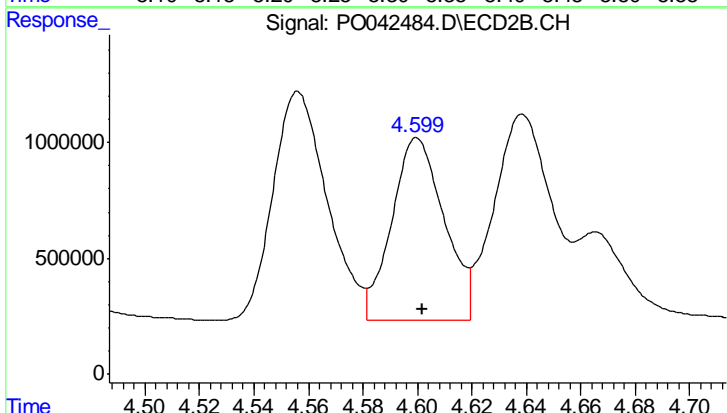
#3 AR-1016-1

R.T.: 4.157 min  
 Delta R.T.: -0.002 min  
 Response: 12173133  
 Conc: 504.94 ng/ml



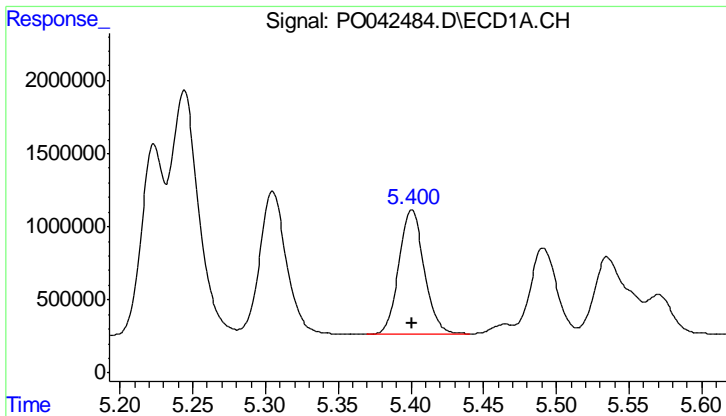
#4 AR-1016-2

R.T.: 5.305 min  
 Delta R.T.: 0.000 min  
 Response: 12674959  
 Conc: 493.13 ng/ml



#4 AR-1016-2

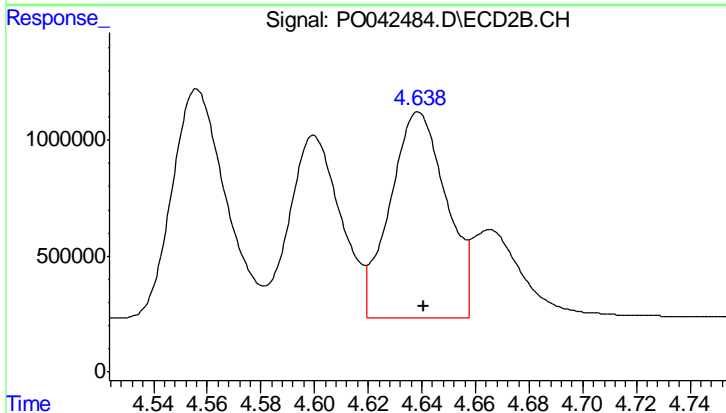
R.T.: 4.600 min  
 Delta R.T.: -0.002 min  
 Response: 10505412  
 Conc: 490.04 ng/ml



#5 AR-1016-3

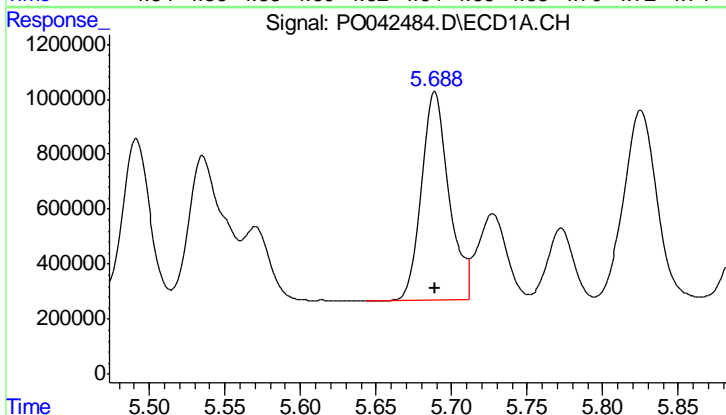
R.T.: 5.401 min  
 Delta R.T.: 0.000 min  
 Response: 10394559  
 Conc: 487.30 ng/ml

Instrument :  
 ECD\_O  
 ClientSampled :  
 AR1660CCC500



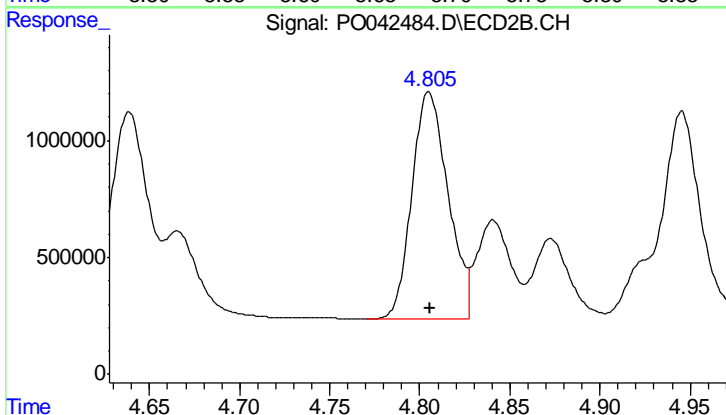
#5 AR-1016-3

R.T.: 4.639 min  
 Delta R.T.: -0.002 min  
 Response: 13003340  
 Conc: 494.22 ng/ml



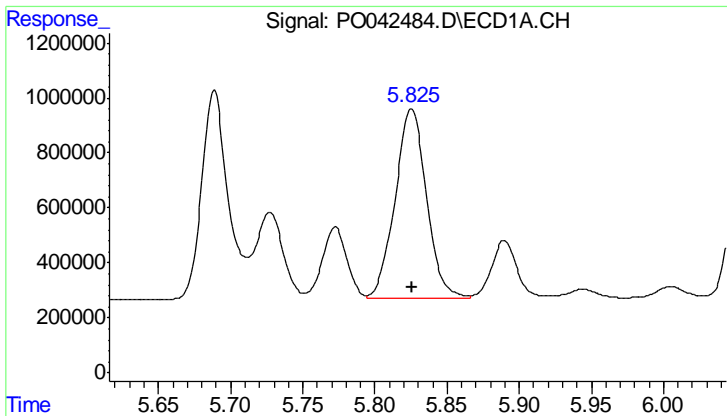
#6 AR-1016-4

R.T.: 5.689 min  
 Delta R.T.: 0.000 min  
 Response: 9517883  
 Conc: 495.36 ng/ml



#6 AR-1016-4

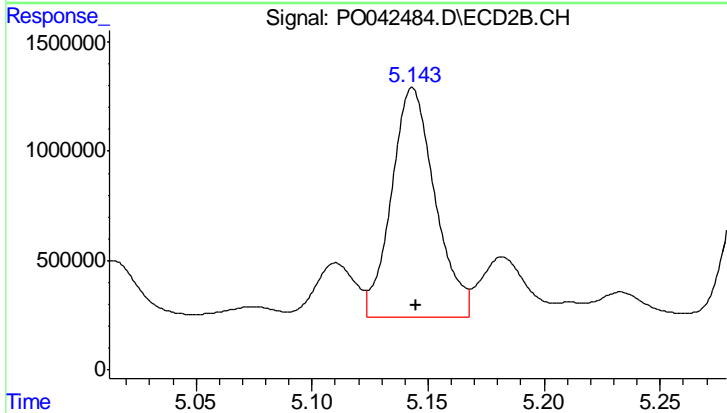
R.T.: 4.805 min  
 Delta R.T.: 0.000 min  
 Response: 13628638  
 Conc: 503.65 ng/ml



#7 AR-1016-5

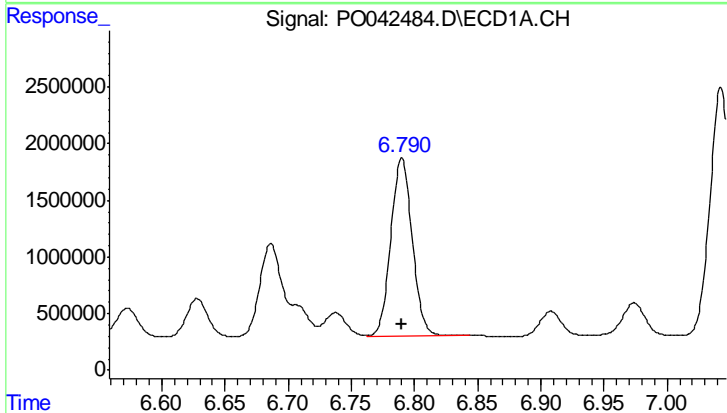
R.T.: 5.825 min  
 Delta R.T.: 0.000 min  
 Response: 10445074  
 Conc: 499.13 ng/ml

Instrument :  
 ECD\_O  
 ClientSampled :  
 AR1660CCC500



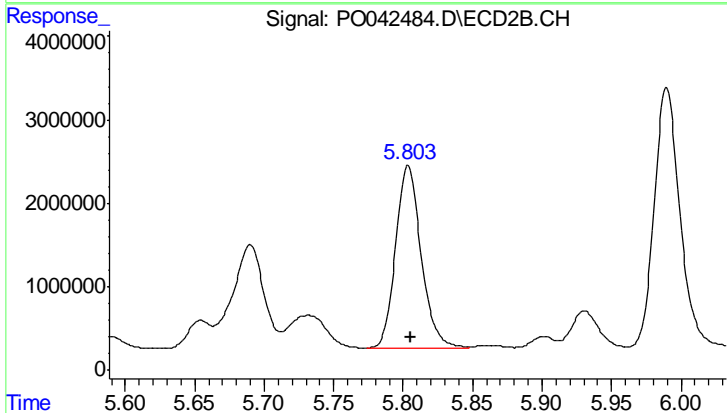
#7 AR-1016-5

R.T.: 5.143 min  
 Delta R.T.: -0.002 min  
 Response: 13752628  
 Conc: 525.20 ng/ml



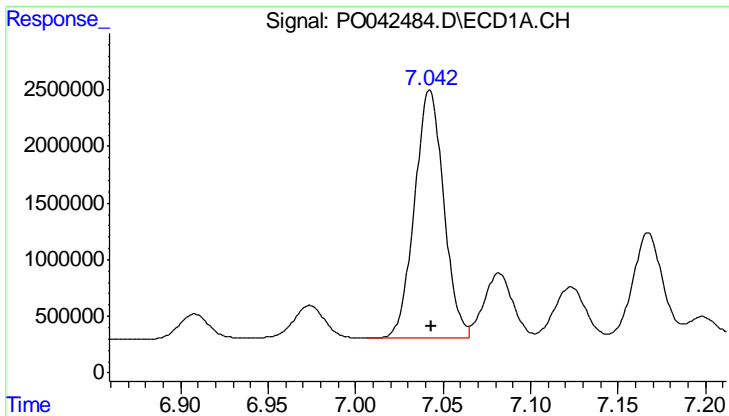
#31 AR-1260-1

R.T.: 6.790 min  
 Delta R.T.: 0.000 min  
 Response: 18531398  
 Conc: 501.77 ng/ml



#31 AR-1260-1

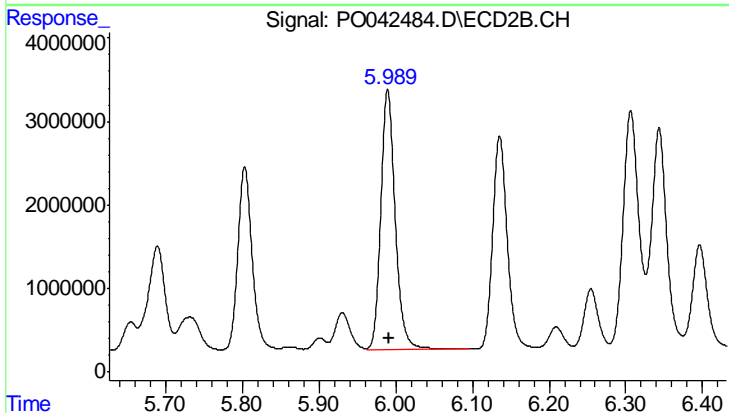
R.T.: 5.804 min  
 Delta R.T.: -0.002 min  
 Response: 28157230  
 Conc: 502.60 ng/ml



#32 AR-1260-2

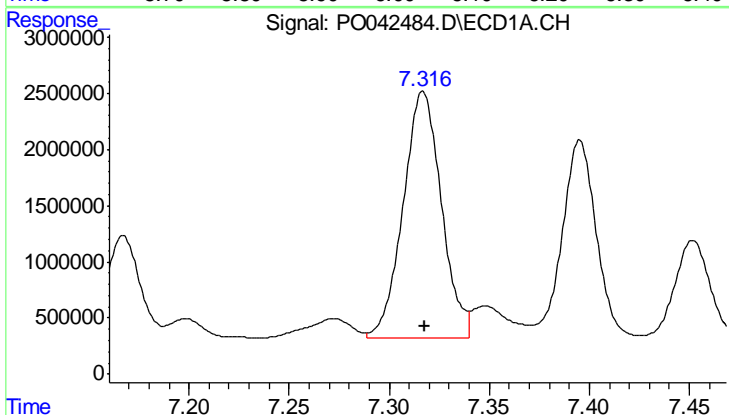
R.T.: 7.042 min  
 Delta R.T.: 0.000 min  
 Response: 25312611  
 Conc: 501.31 ng/ml

Instrument :  
 ECD\_O  
 ClientSampleId :  
 AR1660CCC500



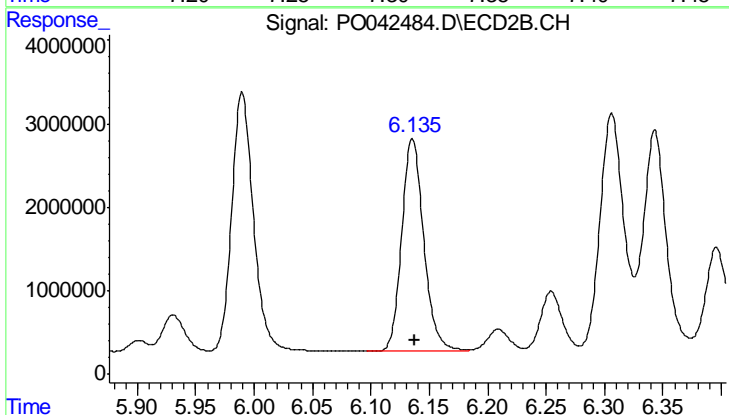
#32 AR-1260-2

R.T.: 5.990 min  
 Delta R.T.: -0.002 min  
 Response: 40442524  
 Conc: 494.75 ng/ml



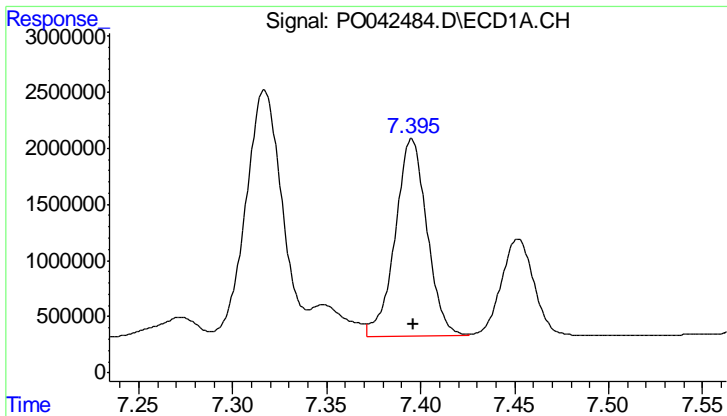
#33 AR-1260-3

R.T.: 7.317 min  
 Delta R.T.: -0.001 min  
 Response: 29201869  
 Conc: 508.53 ng/ml



#33 AR-1260-3

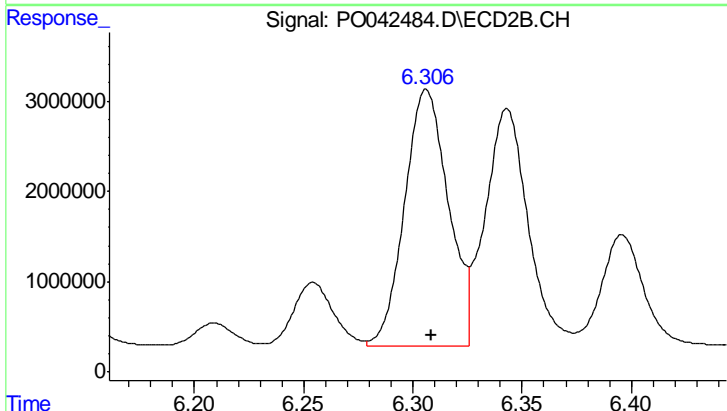
R.T.: 6.136 min  
 Delta R.T.: -0.002 min  
 Response: 33459715  
 Conc: 513.12 ng/ml



#34 AR-1260-4

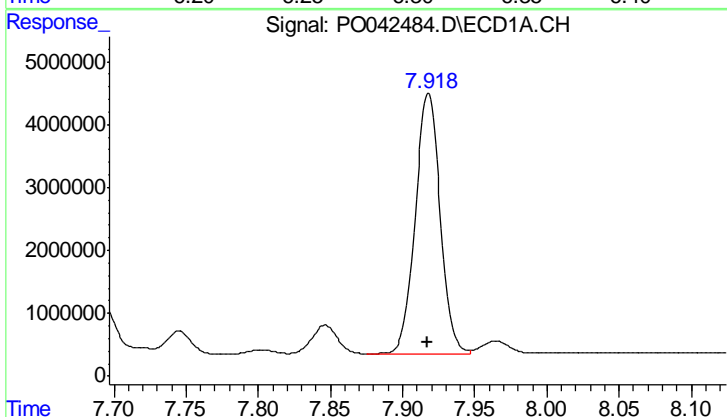
R.T.: 7.395 min  
 Delta R.T.: 0.000 min  
 Response: 20654341  
 Conc: 514.55 ng/ml

Instrument :  
 ECD\_O  
 ClientSampled :  
 AR1660CCC500



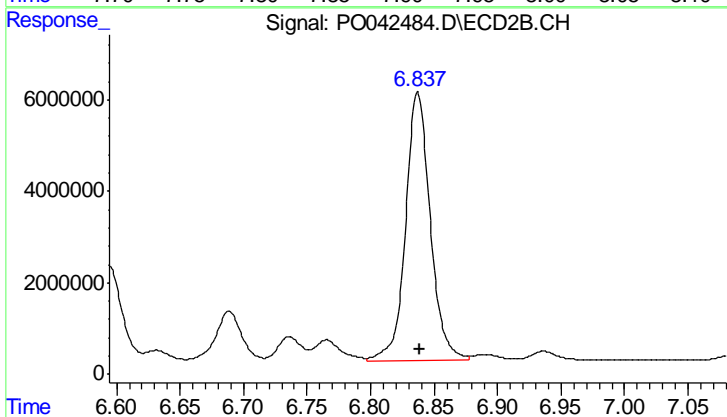
#34 AR-1260-4

R.T.: 6.306 min  
 Delta R.T.: -0.002 min  
 Response: 39884652  
 Conc: 506.01 ng/ml



#35 AR-1260-5

R.T.: 7.918 min  
 Delta R.T.: 0.000 min  
 Response: 49624358  
 Conc: 504.40 ng/ml



#35 AR-1260-5

R.T.: 6.837 min  
 Delta R.T.: -0.002 min  
 Response: 79421823  
 Conc: 514.72 ng/ml