

Data Path : Z:\pestpcbsrv\HPCHEM1\ECD_0\Data\P0022020\
 Data File : P0066671.D
 Signal(s) : Signal #1: ECD1A.CH Signal #2: ECD2B.CH
 Acq On : 20 Feb 2020 12:26
 Operator : DD\AJ
 Sample : L1575-07
 Misc :
 ALS Vial : 15 Sample Multiplier: 1

Instrument :
 ECD_0
 ClientSampleId :

Integration File signal 1: autoint1.e
 Integration File signal 2: autoint2.e
 Quant Time: Feb 20 16:11:19 2020
 Quant Method : Z:\pestpcbsrv\HPCHEM1\ECD_0\methods\P0021320.M
 Quant Title : GC EXTRACTABLES
 QLast Update : Thu Feb 13 16:40:54 2020
 Response via : Initial Calibration
 Integrator: ChemStation 6890 Scale Mode: Small noise peaks clipped

Volume Inj. : 2 µl
 Signal #1 Phase : ZB-MR1 Signal #2 Phase: ZB-MR2
 Signal #1 Info : 30Mx0.32mmx 0.50µ Signal #2 Info : 30M x 0.32mm x 0.25µm

Compound	RT#1	RT#2	Resp#1	Resp#2	ng/ml	ng/ml

System Monitoring Compounds						
1) SA Tetrachlo...	4.123	3.405	959465	1129830	28.036	28.046
2) SA Decachlor...	9.594	8.288	902006	1209733	19.669	20.116

Target Compounds

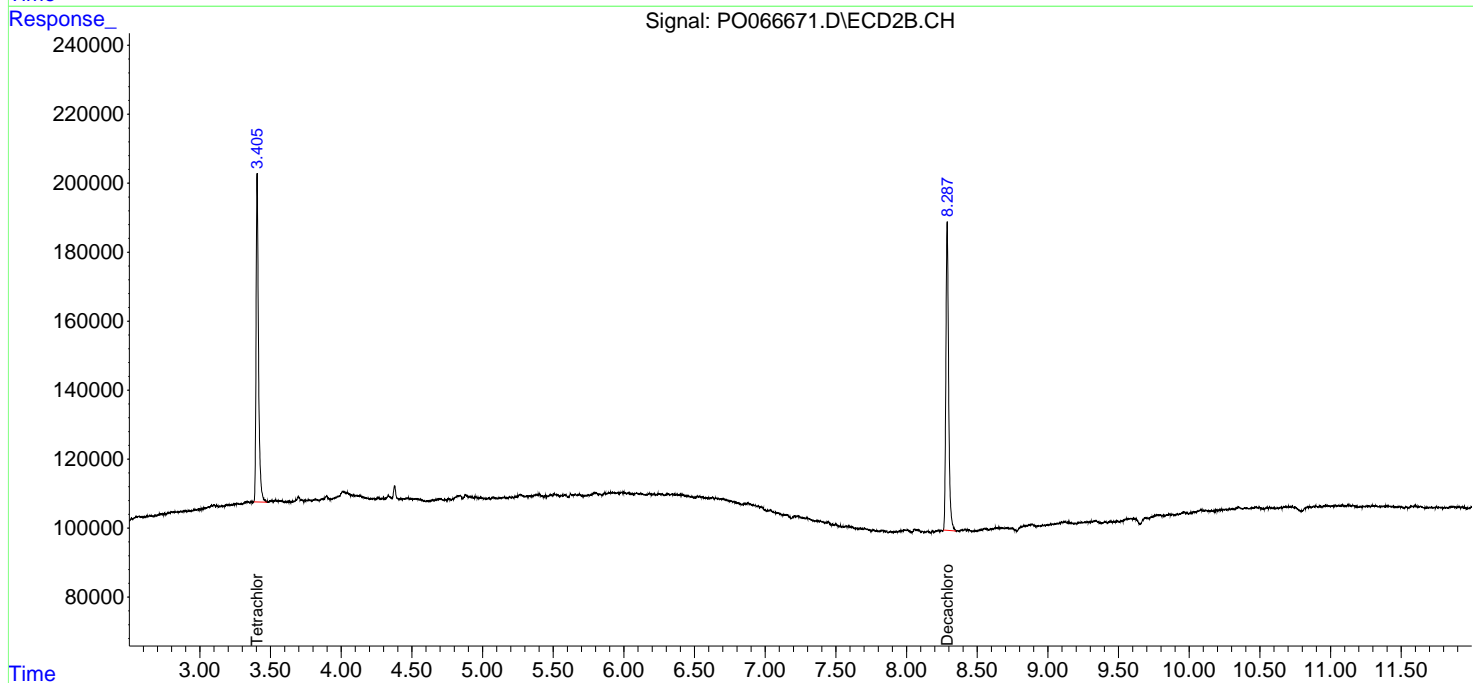
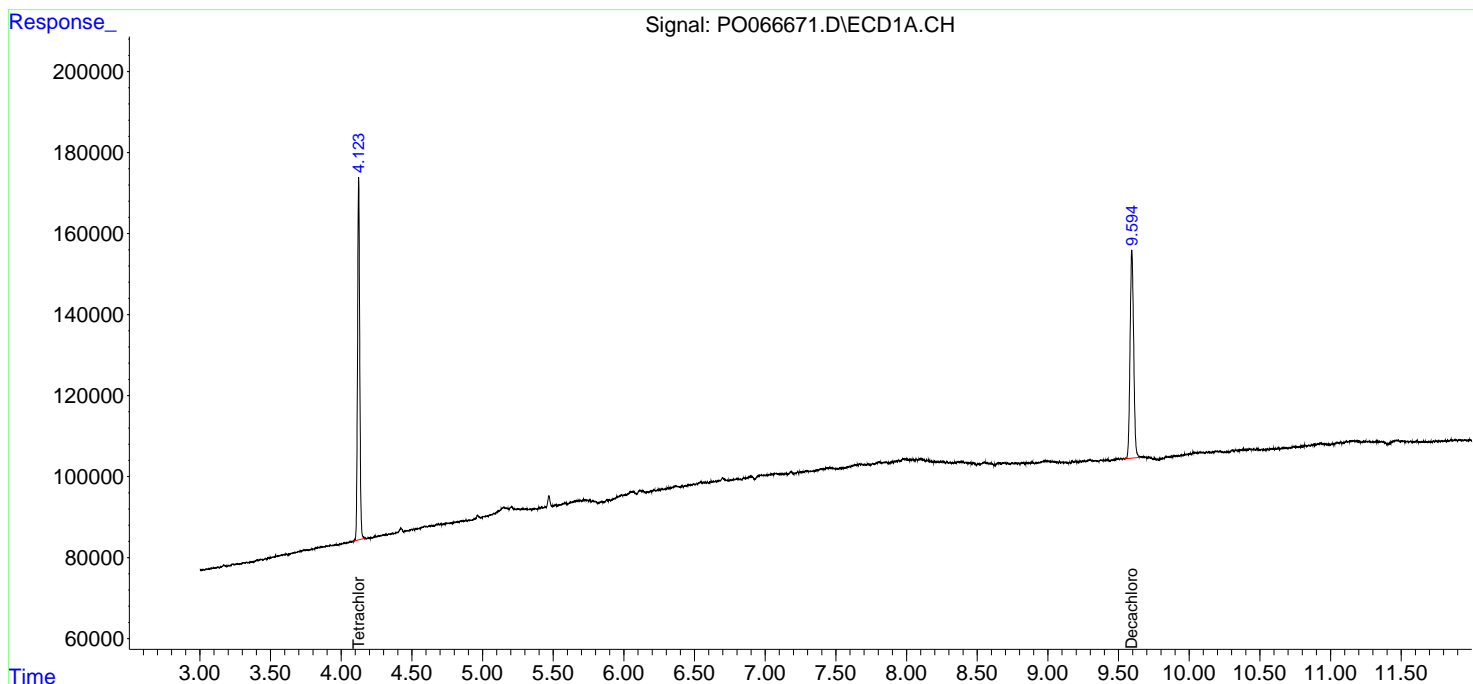
(f)=RT Delta > 1/2 Window (#)=Amounts differ by > 25% (m)=manual int.

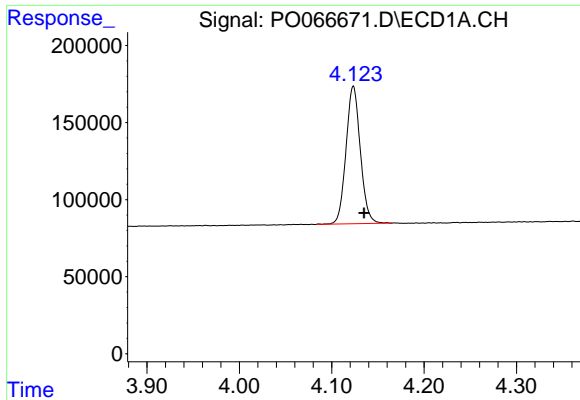
Data Path : Z:\pestpcbsrv\HPCHEM1\ECD_O\Data\P0022020\
 Data File : P0066671.D
 Signal(s) : Signal #1: ECD1A.CH Signal #2: ECD2B.CH
 Acq On : 20 Feb 2020 12:26
 Operator : DD\AJ
 Sample : L1575-07
 Misc :
 ALS Vial : 15 Sample Multiplier: 1

Instrument :
 ECD_O
 ClientSampleId :

Integration File signal 1: autoint1.e
 Integration File signal 2: autoint2.e
 Quant Time: Feb 20 16:11:19 2020
 Quant Method : Z:\pestpcbsrv\HPCHEM1\ECD_O\methods\P0021320.M
 Quant Title : GC EXTRACTABLES
 QLast Update : Thu Feb 13 16:40:54 2020
 Response via : Initial Calibration
 Integrator: ChemStation 6890 Scale Mode: Small noise peaks clipped

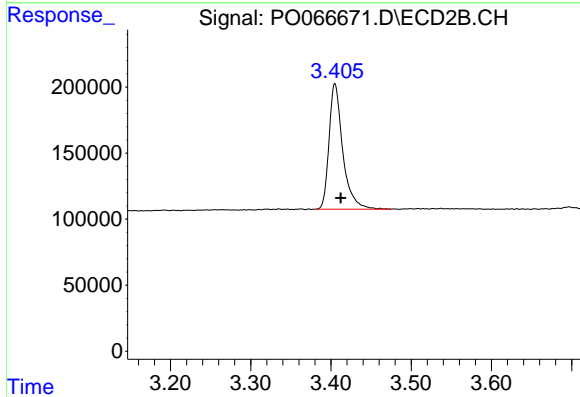
Volume Inj. : 2 µl
 Signal #1 Phase : ZB-MR1 Signal #2 Phase: ZB-MR2
 Signal #1 Info : 30Mx0.32mmx 0.50µ Signal #2 Info : 30M x 0.32mm x 0.25µm



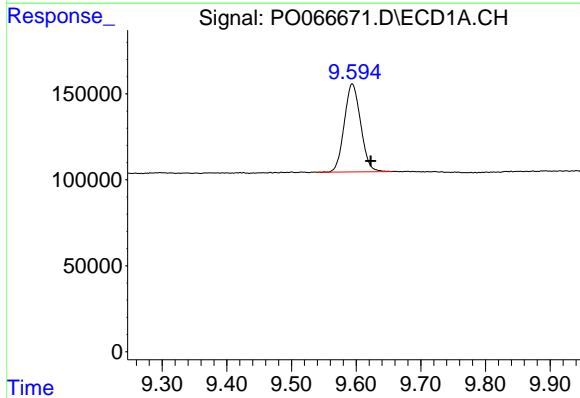


#1 Tetrachloro-m-xylene
R.T.: 4.123 min
Delta R.T.: -0.012 min
Response: 959465
Conc: 28.04 ng/ml

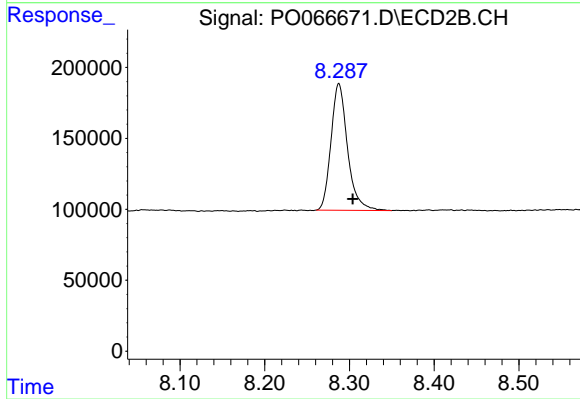
Instrument :
ECD_O
ClientSampleId :



#1 Tetrachloro-m-xylene
R.T.: 3.405 min
Delta R.T.: -0.007 min
Response: 1129830
Conc: 28.05 ng/ml



#2 Decachlorobiphenyl
R.T.: 9.594 min
Delta R.T.: -0.029 min
Response: 902006
Conc: 19.67 ng/ml



#2 Decachlorobiphenyl
R.T.: 8.288 min
Delta R.T.: -0.016 min
Response: 1209733
Conc: 20.12 ng/ml