

Data Path : Z:\pestpcbsrv\HPCHEM1\ECD_0\Data\P0022020\
 Data File : P0066663.D
 Signal(s) : Signal #1: ECD1A.CH Signal #2: ECD2B.CH
 Acq On : 20 Feb 2020 9:36
 Operator : DD\AJ
 Sample : L1567-02
 Misc :
 ALS Vial : 7 Sample Multiplier: 1

Instrument :
 ECD_0
 ClientSampleId :
 02-18-B

Integration File signal 1: autoint1.e
 Integration File signal 2: autoint2.e
 Quant Time: Feb 20 16:09:03 2020
 Quant Method : Z:\pestpcbsrv\HPCHEM1\ECD_0\methods\P0021320.M
 Quant Title : GC EXTRACTABLES
 QLast Update : Thu Feb 13 16:40:54 2020
 Response via : Initial Calibration
 Integrator: ChemStation 6890 Scale Mode: Small noise peaks clipped

Volume Inj. : 2 µl
 Signal #1 Phase : ZB-MR1 Signal #2 Phase: ZB-MR2
 Signal #1 Info : 30Mx0.32mmx 0.50µ Signal #2 Info : 30M x 0.32mm x 0.25µm

Compound	RT#1	RT#2	Resp#1	Resp#2	ng/ml	ng/ml

System Monitoring Compounds						
1) SA Tetrachlo...	4.125	3.407	812489	951765	23.741	23.626
2) SA Decachlor...	9.596	8.290	1070971	1111745	23.354	18.486

Target Compounds

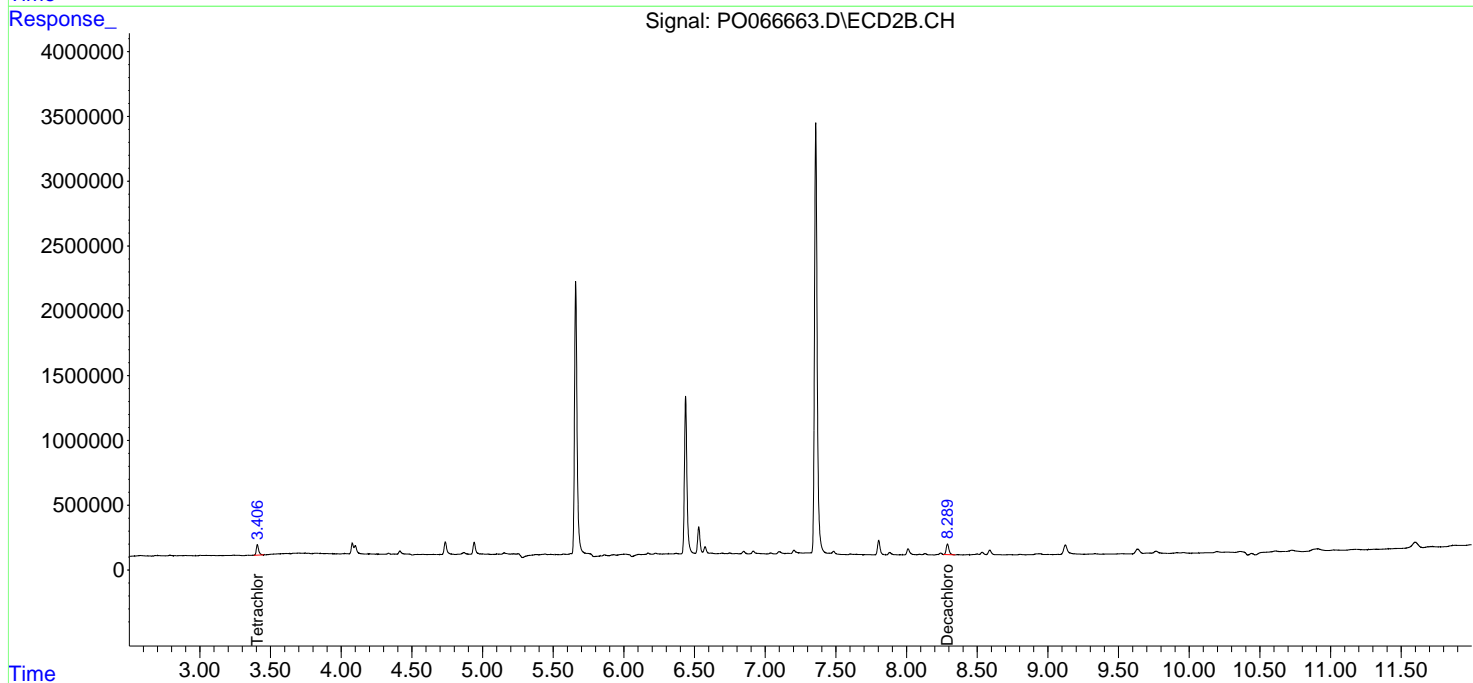
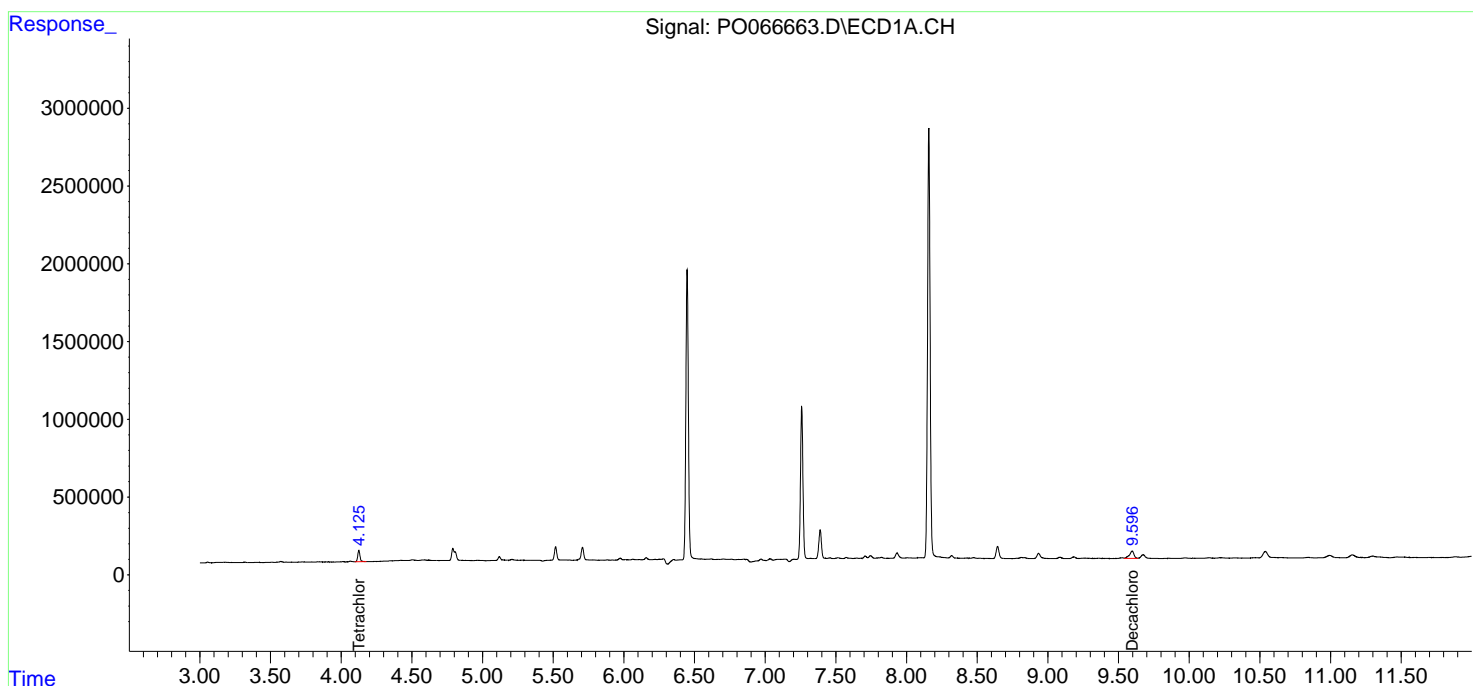
(f)=RT Delta > 1/2 Window (#)=Amounts differ by > 25% (m)=manual int.

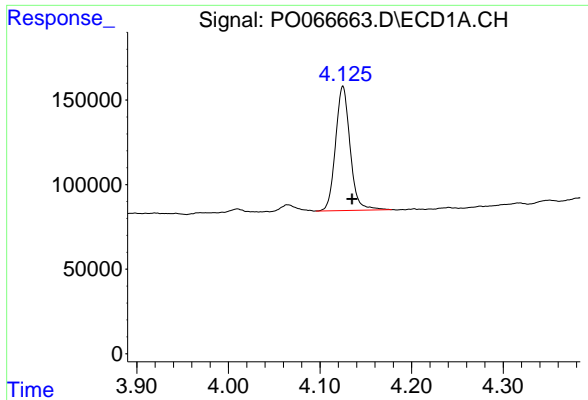
Data Path : Z:\pestpcbsrv\HPCHEM1\ECD_0\Data\P0022020\
 Data File : P0066663.D
 Signal(s) : Signal #1: ECD1A.CH Signal #2: ECD2B.CH
 Acq On : 20 Feb 2020 9:36
 Operator : DD\AJ
 Sample : L1567-02
 Misc :
 ALS Vial : 7 Sample Multiplier: 1

Instrument :
 ECD_O
 ClientSampled :
 02-18-B

Integration File signal 1: autoint1.e
 Integration File signal 2: autoint2.e
 Quant Time: Feb 20 16:09:03 2020
 Quant Method : Z:\pestpcbsrv\HPCHEM1\ECD_0\methods\P0021320.M
 Quant Title : GC EXTRACTABLES
 QLast Update : Thu Feb 13 16:40:54 2020
 Response via : Initial Calibration
 Integrator: ChemStation 6890 Scale Mode: Small noise peaks clipped

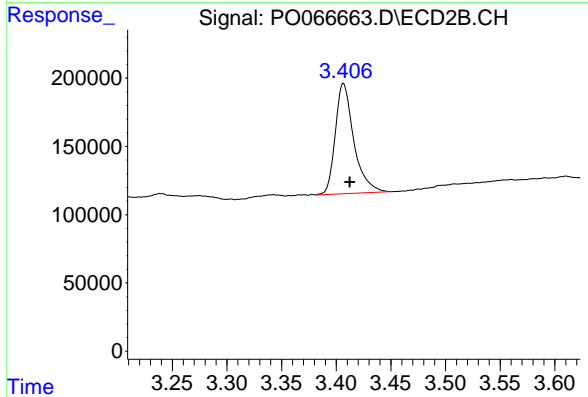
Volume Inj. : 2 µl
 Signal #1 Phase : ZB-MR1 Signal #2 Phase: ZB-MR2
 Signal #1 Info : 30Mx0.32mmx 0.50µ Signal #2 Info : 30M x 0.32mm x 0.25µm



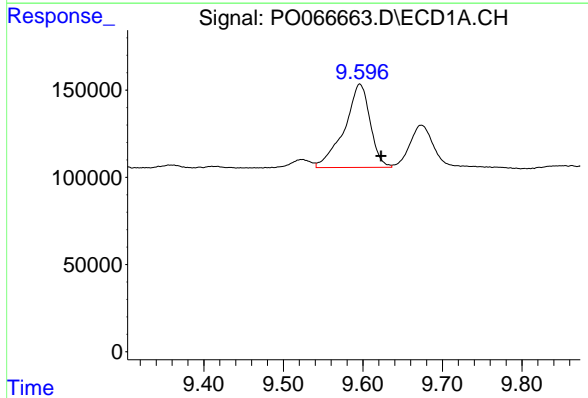


#1 Tetrachloro-m-xylene
 R.T.: 4.125 min
 Delta R.T.: -0.010 min
 Response: 812489
 Conc: 23.74 ng/ml

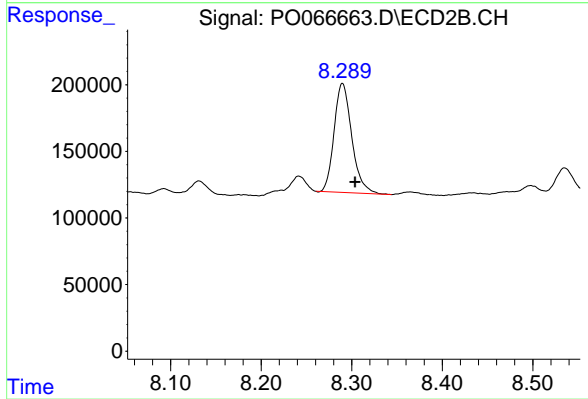
Instrument :
 ECD_O
 ClientSampled :
 02-18-B



#1 Tetrachloro-m-xylene
 R.T.: 3.407 min
 Delta R.T.: -0.006 min
 Response: 951765
 Conc: 23.63 ng/ml



#2 Decachlorobiphenyl
 R.T.: 9.596 min
 Delta R.T.: -0.027 min
 Response: 1070971
 Conc: 23.35 ng/ml



#2 Decachlorobiphenyl
 R.T.: 8.290 min
 Delta R.T.: -0.014 min
 Response: 1111745
 Conc: 18.49 ng/ml