

Data Path : P:\HPCHEM1\ECD_O\Data\PO022618\
 Data File : PO042630.D
 Signal(s) : Signal #1: ECD1A.CH Signal #2: ECD2B.CH
 Acq On : 26 Feb 2018 16:57
 Operator : SM/UA
 Sample : PB106736BS
 Misc :
 ALS Vial : 5 Sample Multiplier: 1

Instrument :
 ECD_O
 ClientSampleId :
 PB106736BS

Integration File signal 1: autoint1.e
 Integration File signal 2: autoint2.e
 Quant Time: Feb 27 00:06:28 2018
 Quant Method : P:\HPCHEM1\ECD_O\methods\PO022118.M
 Quant Title : GC EXTRACTABLES
 QLast Update : Mon Feb 26 14:24:10 2018
 Response via : Initial Calibration
 Integrator: ChemStation 6890 Scale Mode: Small noise peaks clipped

Volume Inj. : 2 µl
 Signal #1 Phase : ZB-MR1 Signal #2 Phase: ZB-MR2
 Signal #1 Info : 30Mx0.32mmx 0.50µ Signal #2 Info : 30M x 0.32mm x 0.25µm

Compound	RT#1	RT#2	Resp#1	Resp#2	ng/ml	ng/ml

System Monitoring Compounds						
1) SA Tetrachlo...	4.096	3.344	3417502	6532937	13.796	17.679 #
2) SA Decachlor...	9.474	8.126	4148714	6036586	16.416	15.654
Target Compounds						
3) L1 AR-1016-1	4.963	4.164	1033602	1945641	153.906	205.542 #
4) L1 AR-1016-2	5.303	4.600	1421404	1556789	158.727	189.991
5) L1 AR-1016-3	5.397	4.639	1120152	2082128	155.035	200.409 #
6) L1 AR-1016-4	5.821	4.803	879265	2126389	123.760	191.478 #
7) L1 AR-1016-5	6.050	5.139	965814	1535534	134.163	145.267
9) L2 AR-1221-2	4.453	3.700	707174	1310248	497.816	692.681 #
10) L2 AR-1221-3	4.453	3.700	707174	1310248	152.822	209.511 #
11) L3 AR-1232-1	4.453	3.700	707174	1310248	201.794	266.080 #
12) L3 AR-1232-2	5.243	4.388	2404192	702459	913.550	69.864 #
13) L3 AR-1232-3	5.243	4.444	2404192	1947801	538.317	472.351
14) L3 AR-1232-4	5.303	4.600	1421404	1556789	516.208	502.435
15) L3 AR-1232-5	5.397	4.639	1120152	2082128	533.461	963.050 #
16) L4 AR-1242-1	4.806	3.983	563455	2974037	181.748	1171.917 #
17) L4 AR-1242-2	5.243	4.388	2404192	702459	326.857	40.940 #
18) L4 AR-1242-3	5.397	4.600	1120152	1556789	304.718	295.954
19) L4 AR-1242-4	5.724	4.666	441011	780083	117.284	149.010 #
20) L4 AR-1242-5	5.821	4.839	879265	809962	210.814	140.081 #
21) L5 AR-1248-1	5.724	4.839	441011	809962	60.985	74.091
22) L5 AR-1248-2	5.821	4.943	879265	1719773	140.255	176.866 #
23) L5 AR-1248-3	6.050	5.139	965814	1535534	105.618	90.536
24) L5 AR-1248-4	0.000	5.139	0	1535534	N.D.	113.723 #
25) L5 AR-1248-5	0.000	5.682	0	3160016	N.D.	410.100 #
26) L6 AR-1254-1	6.263	5.139	919567	1535534	65.324	83.021 #
27) L6 AR-1254-2	6.565	5.283	380118	1663973	43.705	100.626 #
28) L6 AR-1254-3	6.678	5.682	1458465	3160016	94.100	114.859
29) L6 AR-1254-4	6.965	5.923	440924	1046888	33.613	53.726 #
30) L6 AR-1254-5	7.159	6.245	1062344	1350288	112.852	101.942
31) L7 AR-1260-1	6.782	5.795	2228990	4348903	162.020	180.137
32) L7 AR-1260-2	7.033	5.982	2915537	6433653	159.391	191.523
33) L7 AR-1260-3	7.309	6.126	3426547	5015595	164.908	176.191
34) L7 AR-1260-4	7.386	6.298	2080370	6132715	140.555	179.386 #
35) L7 AR-1260-5	7.906	6.828	4745726	9611287	140.390	142.021
36) L8 AR-1262-1	6.782	5.982	2228990	6433653	235.683	289.666
37) L8 AR-1262-2	7.073	6.126	842360	5015595	72.350	249.403 #
38) L8 AR-1262-3	7.339	6.387	451507	2270145	39.239	61.249 #
39) L8 AR-1262-4	7.607	6.622	2224539	437897	145.009	15.810 #

Data Path : P:\HPCHEM1\ECD_O\Data\PO022618\
 Data File : PO042630.D
 Signal(s) : Signal #1: ECD1A.CH Signal #2: ECD2B.CH
 Acq On : 26 Feb 2018 16:57
 Operator : SM/UA
 Sample : PB106736BS
 Misc :
 ALS Vial : 5 Sample Multiplier: 1

Instrument :
 ECD_O
 ClientSampleId :
 PB106736BS

Integration File signal 1: autoint1.e
 Integration File signal 2: autoint2.e
 Quant Time: Feb 27 00:06:28 2018
 Quant Method : P:\HPCHEM1\ECD_O\methods\PO022118.M
 Quant Title : GC EXTRACTABLES
 QLast Update : Mon Feb 26 14:24:10 2018
 Response via : Initial Calibration
 Integrator: ChemStation 6890 Scale Mode: Small noise peaks clipped

Volume Inj. : 2 µl
 Signal #1 Phase : ZB-MR1 Signal #2 Phase: ZB-MR2
 Signal #1 Info : 30Mx0.32mmx 0.50µ Signal #2 Info : 30M x 0.32mm x 0.25µm

	Compound	RT#1	RT#2	Resp#1	Resp#2	ng/ml	ng/ml
40)	L8 AR-1262-5	7.906	6.828	4745726	9611287	147.421	151.698
41)	L9 AR-1268-1	8.246	7.163	1750017	6340270	46.313	86.510 #
42)	L9 AR-1268-2	8.246	7.163	1750017	6340270	52.743	98.065 #
44)	L9 AR-1268-4	8.832	7.653	1228765	1772855	98.583	79.805
45)	L9 AR-1268-5	0.000	7.915	0	538805	N.D.	3.743 #

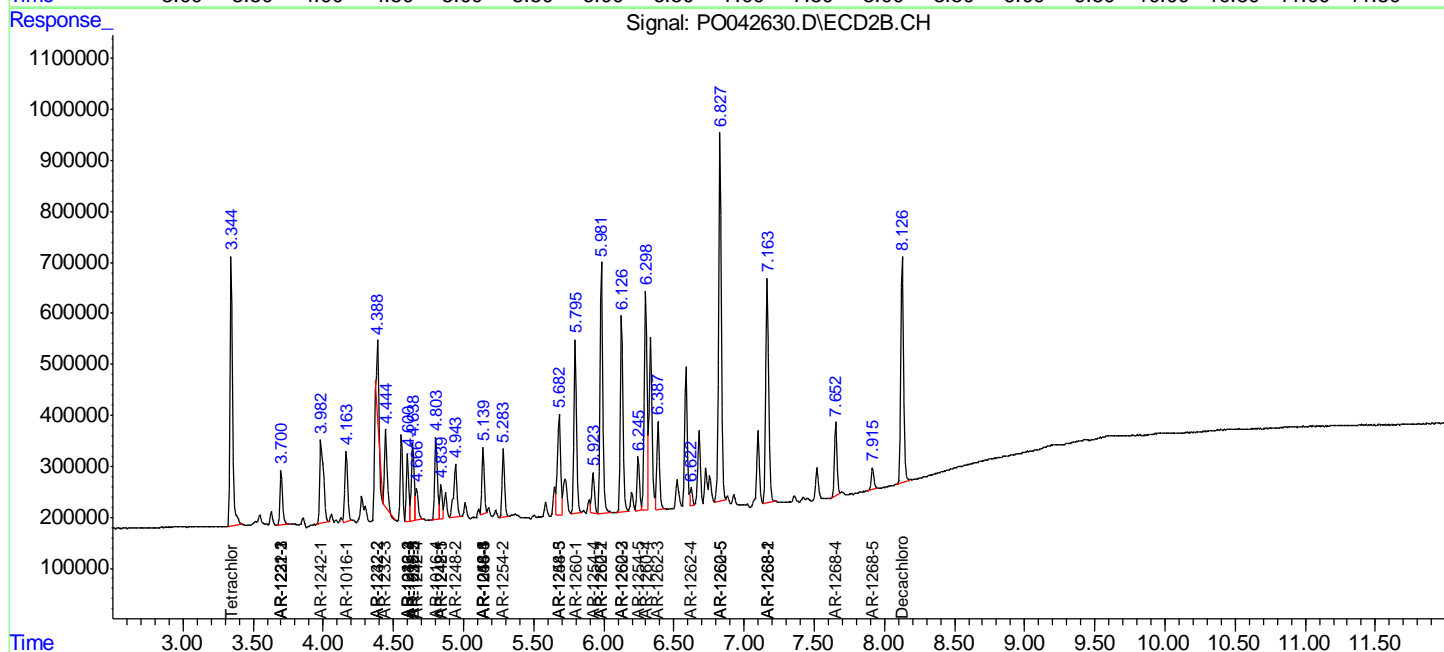
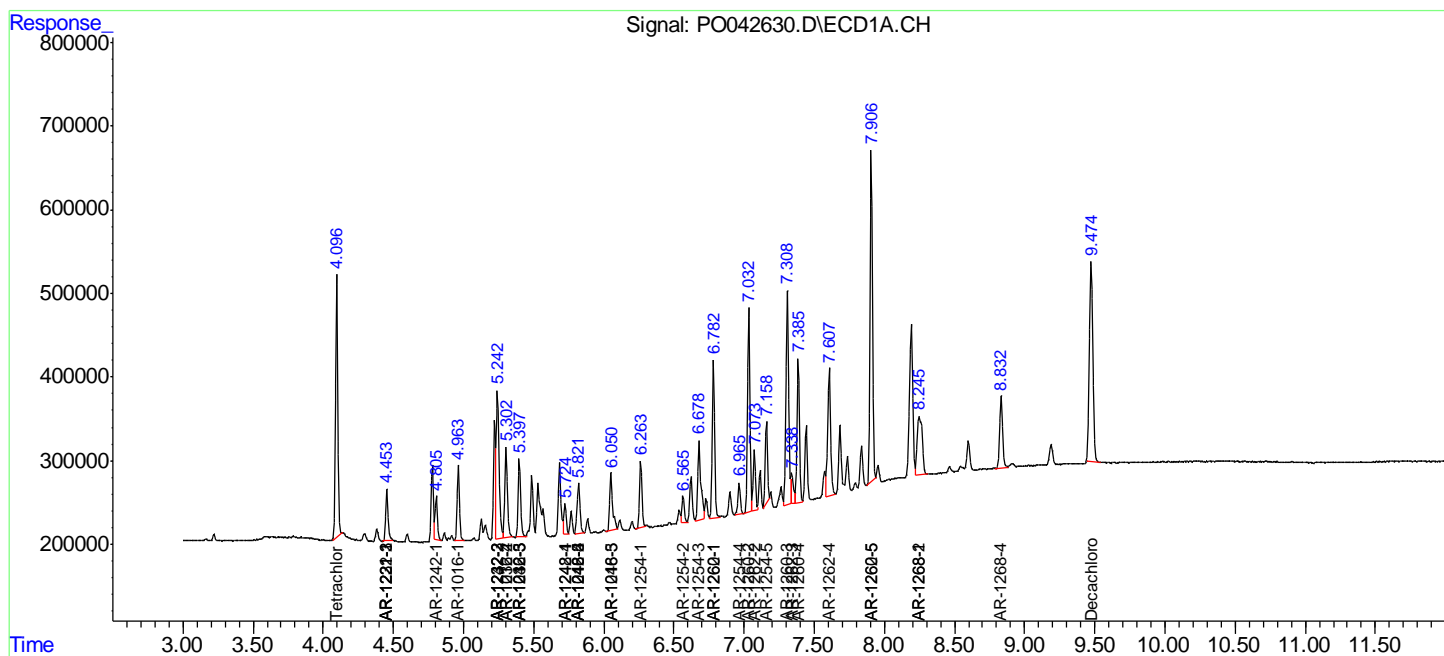
(f)=RT Delta > 1/2 Window (#)=Amounts differ by > 25% (m)=manual int.

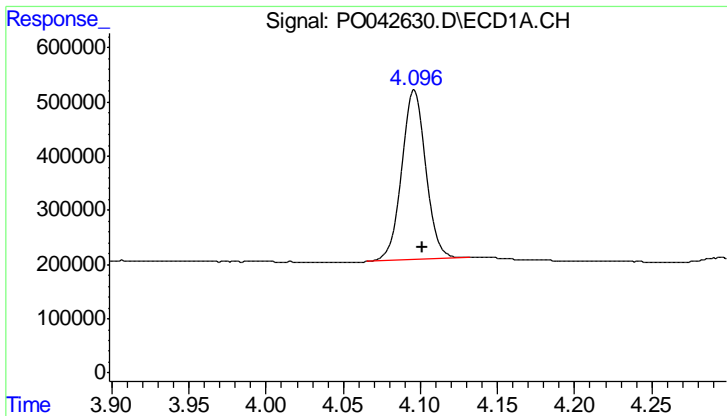
Data Path : P:\HPCHEM1\ECD_O\Data\PO022618\
 Data File : PO042630.D
 Signal(s) : Signal #1: ECD1A.CH Signal #2: ECD2B.CH
 Acq On : 26 Feb 2018 16:57
 Operator : SM/UA
 Sample : PB106736BS
 Misc :
 ALS Vial : 5 Sample Multiplier: 1

Instrument :
 ECD_O
Client Sampled :
 PB106736BS

Integration File signal 1: autoint1.e
 Integration File signal 2: autoint2.e
 Quant Time: Feb 27 00:06:28 2018
 Quant Method : P:\HPCHEM1\ECD_O\methods\PO022118.M
 Quant Title : GC EXTRACTABLES
 QLast Update : Mon Feb 26 14:24:10 2018
 Response via : Initial Calibration
 Integrator: ChemStation 6890 Scale Mode: Small noise peaks clipped

Volume Inj. : 2 µl
 Signal #1 Phase : ZB-MR1 Signal #2 Phase: ZB-MR2
 Signal #1 Info : 30Mx0.32mmx 0.50µ Signal #2 Info : 30M x 0.32mm x 0.25µm

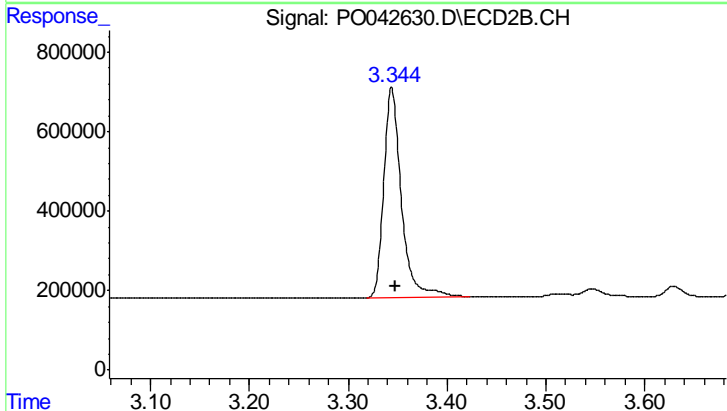




#1 Tetrachloro-m-xylene

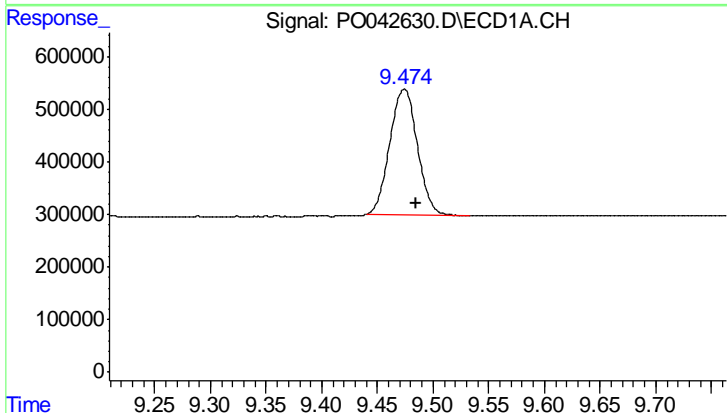
R.T.: 4.096 min
 Delta R.T.: -0.005 min
 Response: 3417502
 Conc: 13.80 ng/ml

Instrument :
 ECD_O
 ClientSampleId :
 PB106736BS



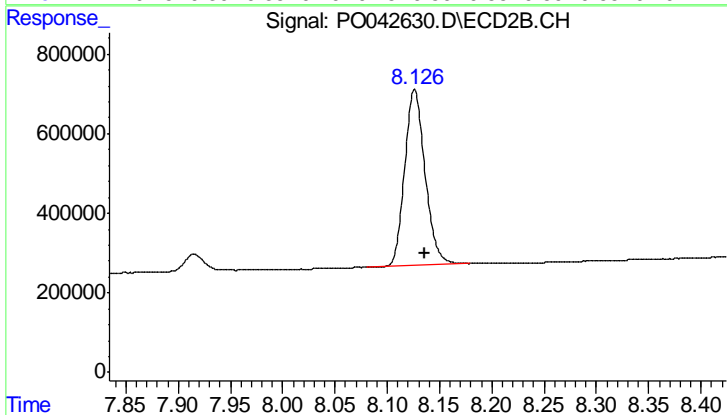
#1 Tetrachloro-m-xylene

R.T.: 3.344 min
 Delta R.T.: -0.004 min
 Response: 6532937
 Conc: 17.68 ng/ml



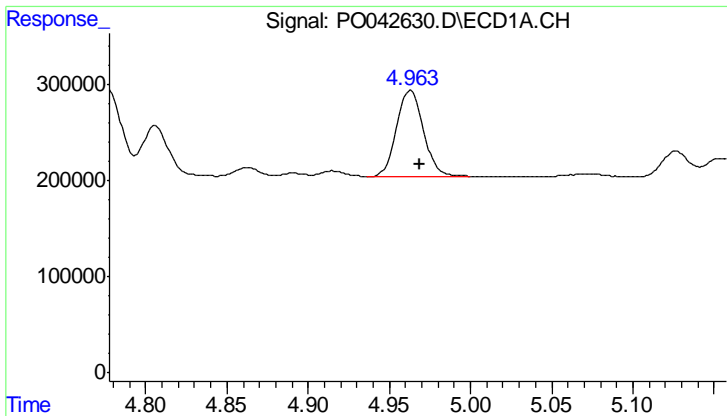
#2 Decachlorobiphenyl

R.T.: 9.474 min
 Delta R.T.: -0.010 min
 Response: 4148714
 Conc: 16.42 ng/ml



#2 Decachlorobiphenyl

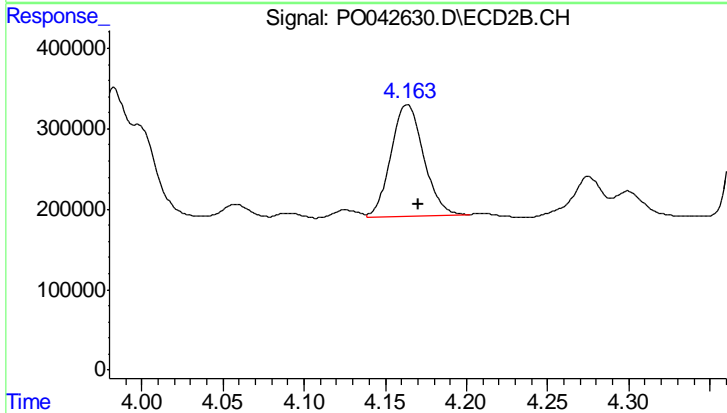
R.T.: 8.126 min
 Delta R.T.: -0.010 min
 Response: 6036586
 Conc: 15.65 ng/ml



#3 AR-1016-1

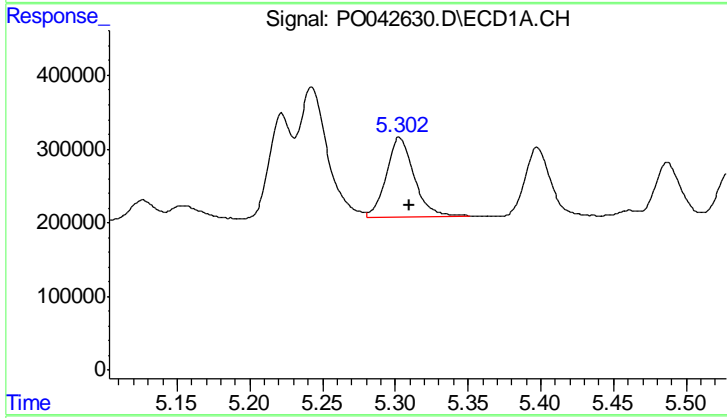
R.T.: 4.963 min
 Delta R.T.: -0.006 min
 Response: 1033602
 Conc: 153.91 ng/ml

Instrument :
 ECD_O
 ClientSampleId :
 PB106736BS



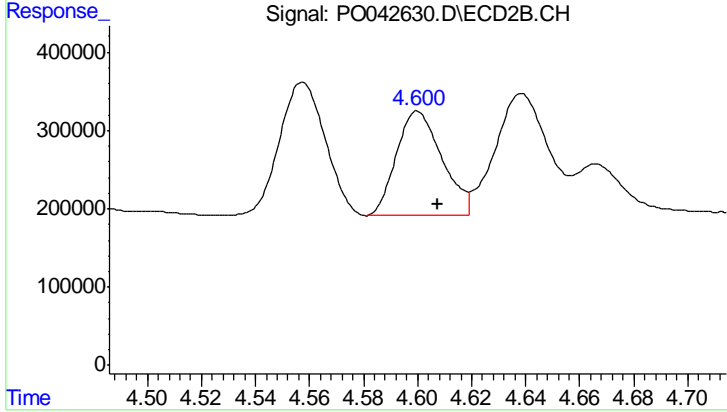
#3 AR-1016-1

R.T.: 4.164 min
 Delta R.T.: -0.007 min
 Response: 1945641
 Conc: 205.54 ng/ml



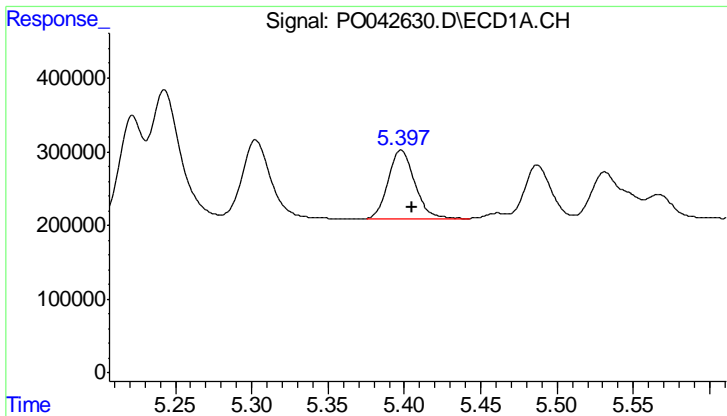
#4 AR-1016-2

R.T.: 5.303 min
 Delta R.T.: -0.007 min
 Response: 1421404
 Conc: 158.73 ng/ml



#4 AR-1016-2

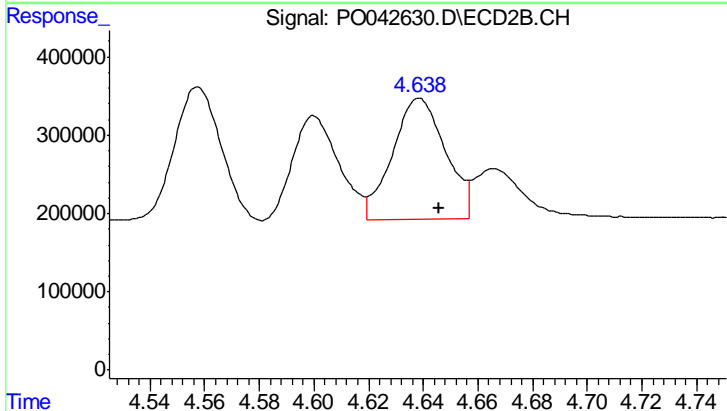
R.T.: 4.600 min
 Delta R.T.: -0.007 min
 Response: 1556789
 Conc: 189.99 ng/ml



#5 AR-1016-3

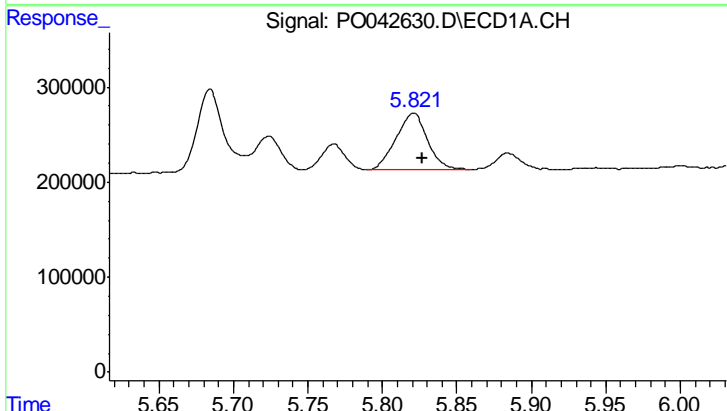
R.T.: 5.397 min
 Delta R.T.: -0.007 min
 Response: 1120152
 Conc: 155.04 ng/ml

Instrument :
 ECD_O
 ClientSampleId :
 PB106736BS



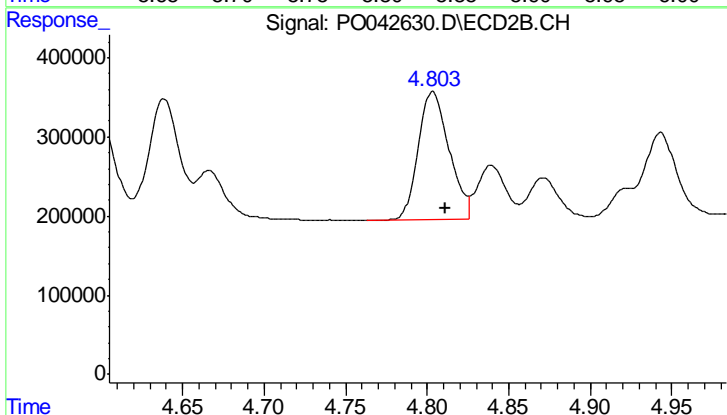
#5 AR-1016-3

R.T.: 4.639 min
 Delta R.T.: -0.007 min
 Response: 2082128
 Conc: 200.41 ng/ml



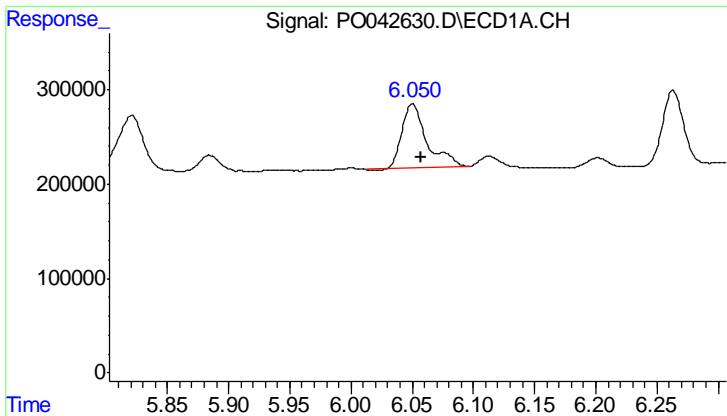
#6 AR-1016-4

R.T.: 5.821 min
 Delta R.T.: -0.006 min
 Response: 879265
 Conc: 123.76 ng/ml



#6 AR-1016-4

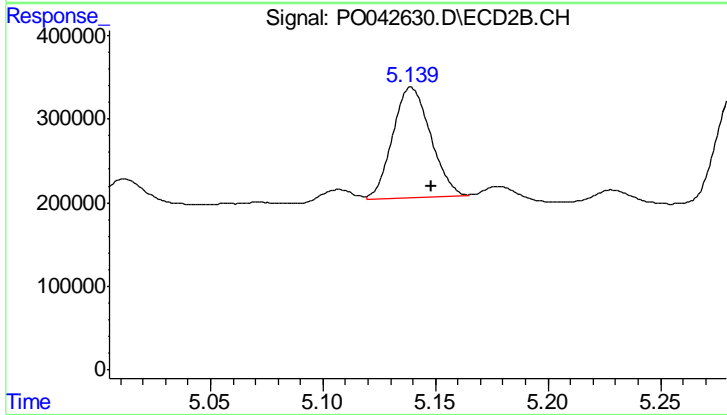
R.T.: 4.803 min
 Delta R.T.: -0.008 min
 Response: 2126389
 Conc: 191.48 ng/ml



#7 AR-1016-5

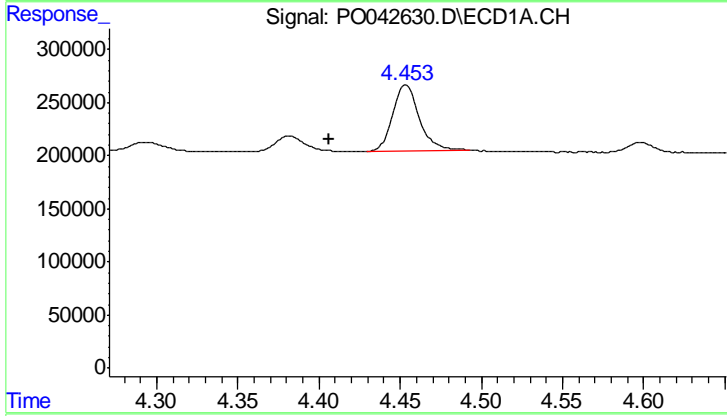
R.T.: 6.050 min
 Delta R.T.: -0.007 min
 Response: 965814
 Conc: 134.16 ng/ml

Instrument :
 ECD_O
 ClientSampleId :
 PB106736BS



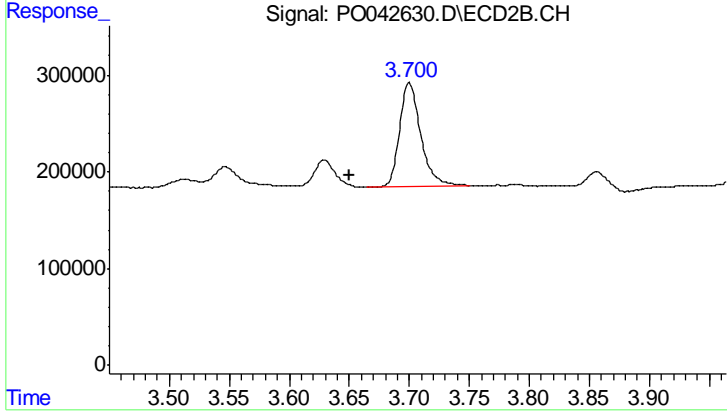
#7 AR-1016-5

R.T.: 5.139 min
 Delta R.T.: -0.009 min
 Response: 1535534
 Conc: 145.27 ng/ml



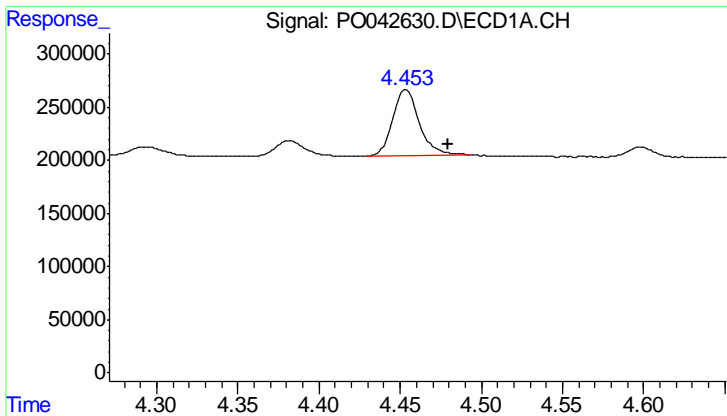
#9 AR-1221-2

R.T.: 4.453 min
 Delta R.T.: 0.047 min
 Response: 707174
 Conc: 497.82 ng/ml



#9 AR-1221-2

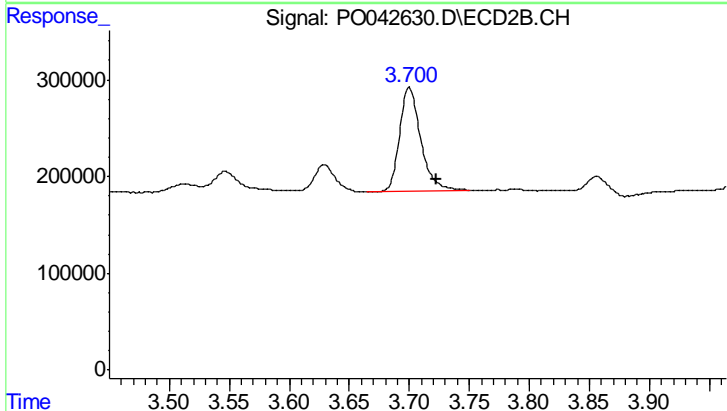
R.T.: 3.700 min
 Delta R.T.: 0.049 min
 Response: 1310248
 Conc: 692.68 ng/ml



#10 AR-1221-3

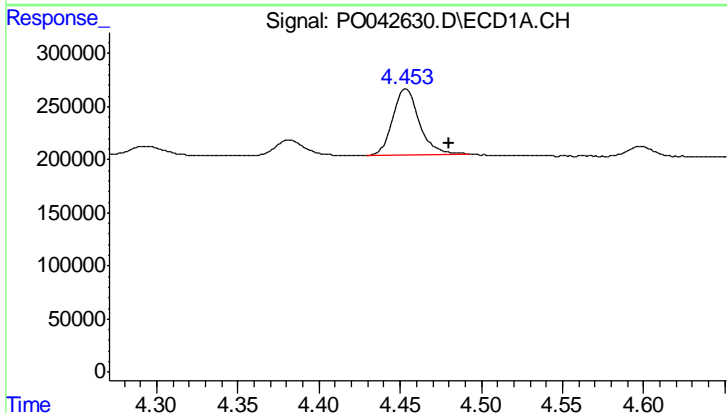
R.T.: 4.453 min
 Delta R.T.: -0.026 min
 Response: 707174
 Conc: 152.82 ng/ml

Instrument :
 ECD_O
 ClientSampleId :
 PB106736BS



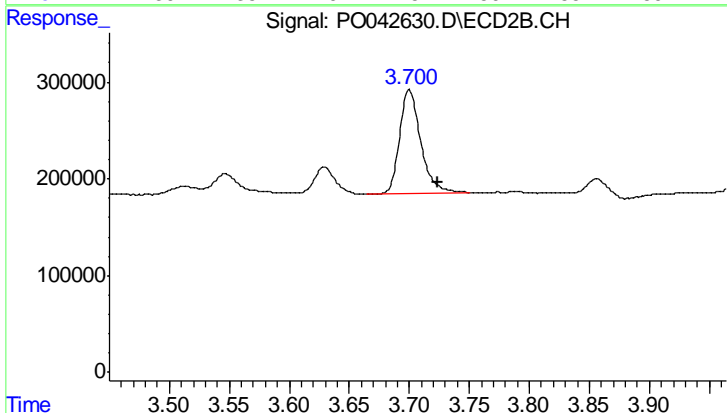
#10 AR-1221-3

R.T.: 3.700 min
 Delta R.T.: -0.022 min
 Response: 1310248
 Conc: 209.51 ng/ml



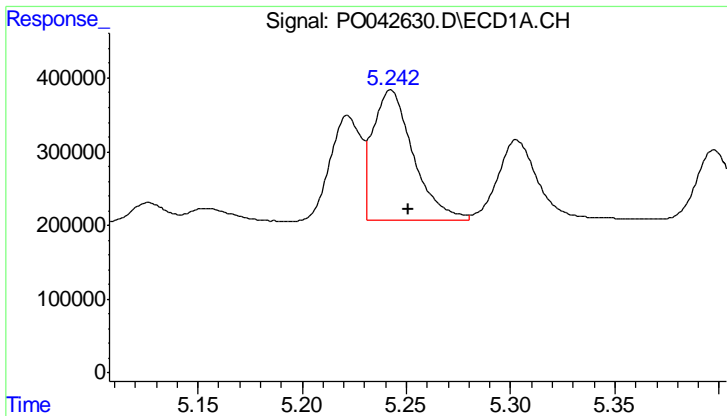
#11 AR-1232-1

R.T.: 4.453 min
 Delta R.T.: -0.027 min
 Response: 707174
 Conc: 201.79 ng/ml



#11 AR-1232-1

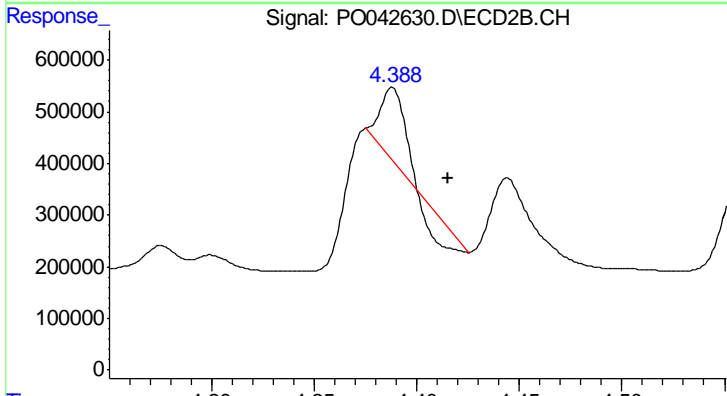
R.T.: 3.700 min
 Delta R.T.: -0.023 min
 Response: 1310248
 Conc: 266.08 ng/ml



#12 AR-1232-2

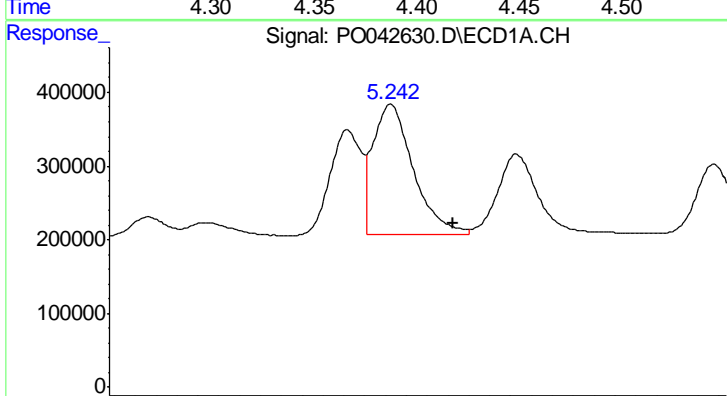
R.T.: 5.243 min
 Delta R.T.: -0.008 min
 Response: 2404192
 Conc: 913.55 ng/ml

Instrument :
 ECD_O
 ClientSampleId :
 PB106736BS



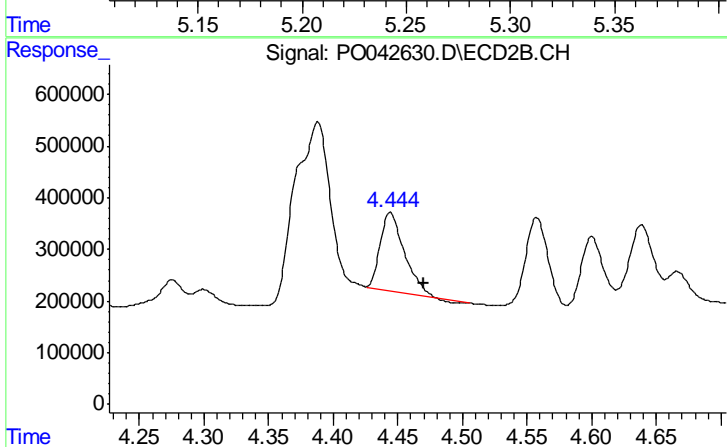
#12 AR-1232-2

R.T.: 4.388 min
 Delta R.T.: -0.027 min
 Response: 702459
 Conc: 69.86 ng/ml



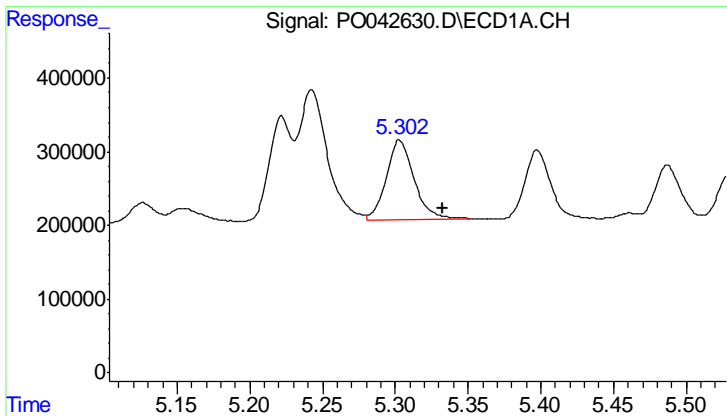
#13 AR-1232-3

R.T.: 5.243 min
 Delta R.T.: -0.030 min
 Response: 2404192
 Conc: 538.32 ng/ml



#13 AR-1232-3

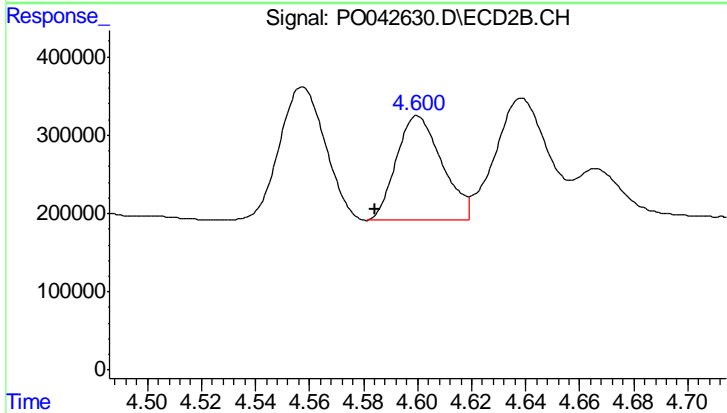
R.T.: 4.444 min
 Delta R.T.: -0.026 min
 Response: 1947801
 Conc: 472.35 ng/ml



#14 AR-1232-4

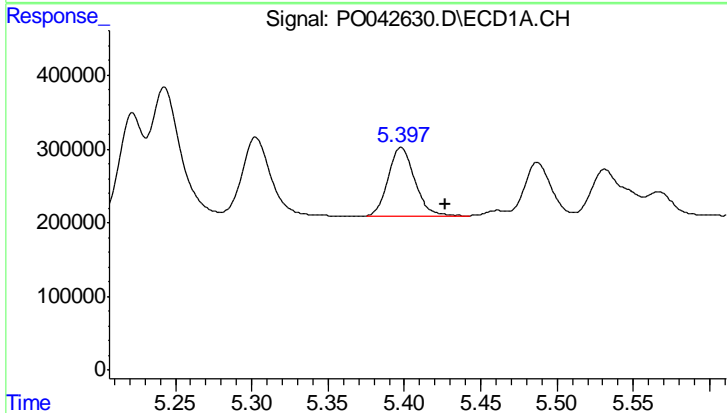
R.T.: 5.303 min
 Delta R.T.: -0.030 min
 Response: 1421404
 Conc: 516.21 ng/ml

Instrument :
 ECD_O
 ClientSampleId :
 PB106736BS



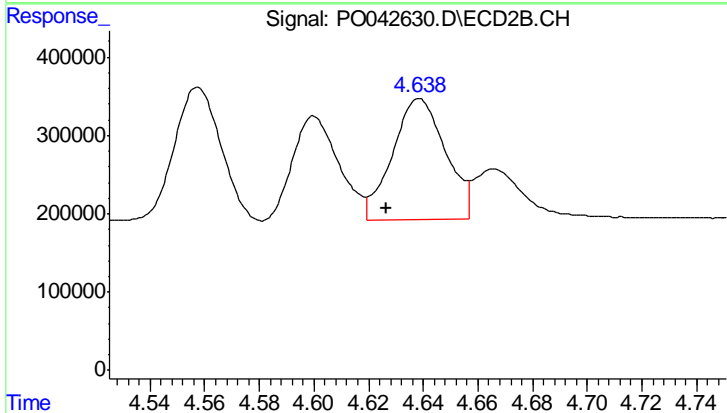
#14 AR-1232-4

R.T.: 4.600 min
 Delta R.T.: 0.016 min
 Response: 1556789
 Conc: 502.44 ng/ml



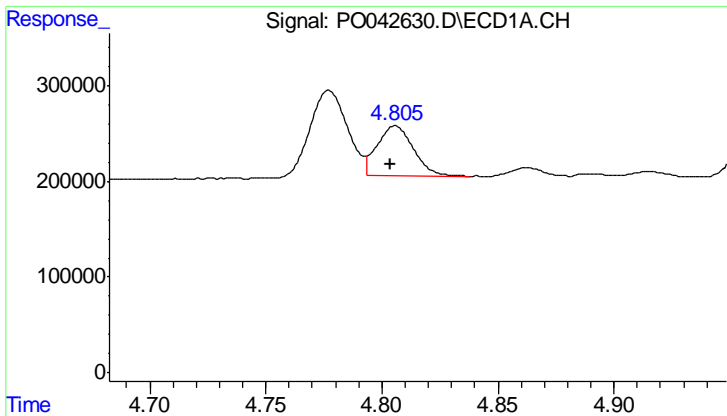
#15 AR-1232-5

R.T.: 5.397 min
 Delta R.T.: -0.030 min
 Response: 1120152
 Conc: 533.46 ng/ml



#15 AR-1232-5

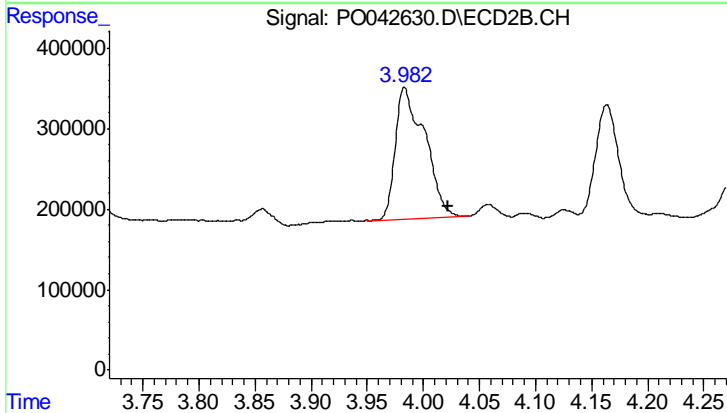
R.T.: 4.639 min
 Delta R.T.: 0.012 min
 Response: 2082128
 Conc: 963.05 ng/ml



#16 AR-1242-1

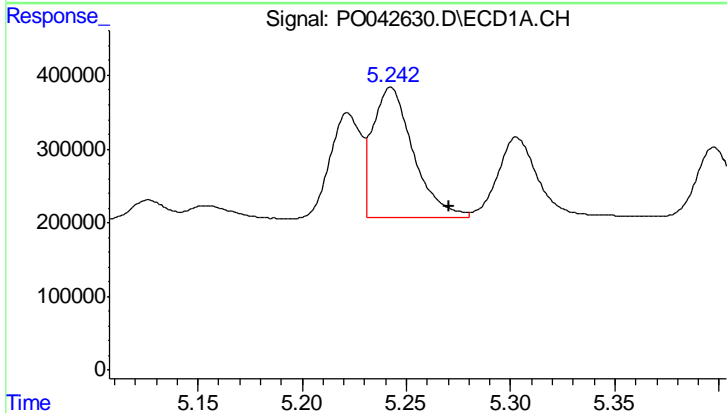
R.T.: 4.806 min
 Delta R.T.: 0.002 min
 Response: 563455
 Conc: 181.75 ng/ml

Instrument :
 ECD_O
 ClientSampleId :
 PB106736BS



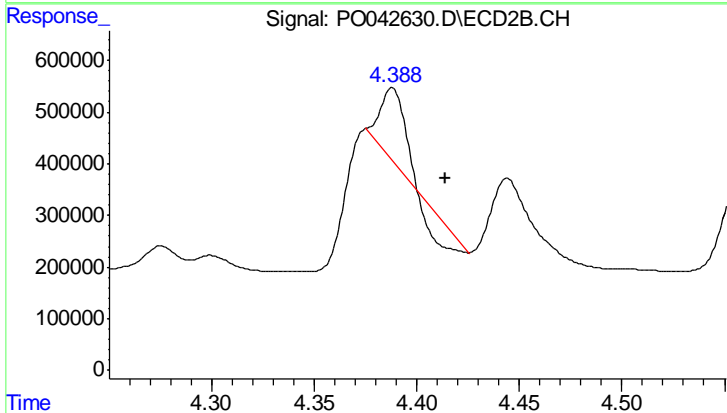
#16 AR-1242-1

R.T.: 3.983 min
 Delta R.T.: -0.039 min
 Response: 2974037
 Conc: 1171.92 ng/ml



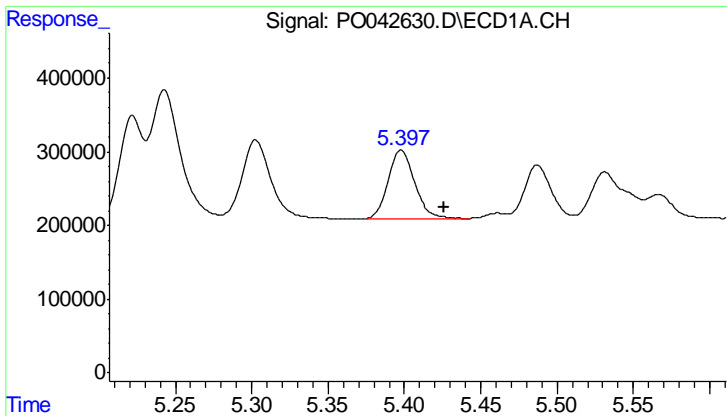
#17 AR-1242-2

R.T.: 5.243 min
 Delta R.T.: -0.028 min
 Response: 2404192
 Conc: 326.86 ng/ml



#17 AR-1242-2

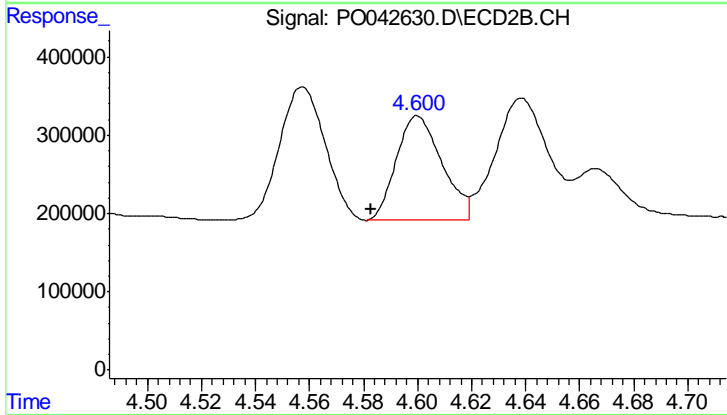
R.T.: 4.388 min
 Delta R.T.: -0.026 min
 Response: 702459
 Conc: 40.94 ng/ml



#18 AR-1242-3

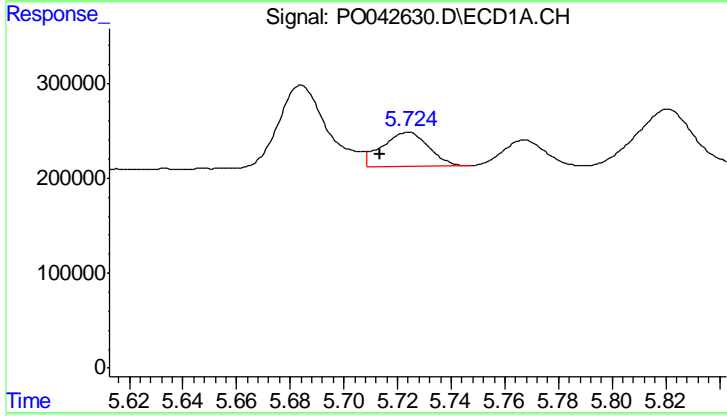
R.T.: 5.397 min
 Delta R.T.: -0.028 min
 Response: 1120152
 Conc: 304.72 ng/ml

Instrument :
 ECD_O
 ClientSampleId :
 PB106736BS



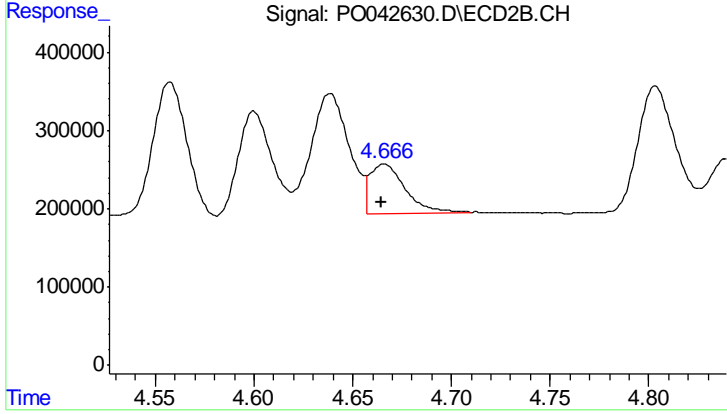
#18 AR-1242-3

R.T.: 4.600 min
 Delta R.T.: 0.017 min
 Response: 1556789
 Conc: 295.95 ng/ml



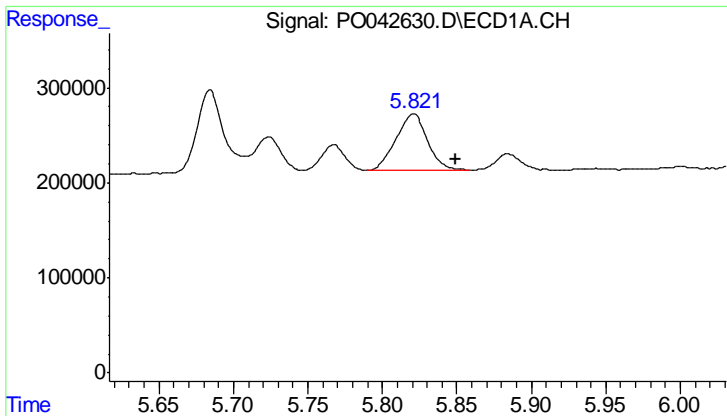
#19 AR-1242-4

R.T.: 5.724 min
 Delta R.T.: 0.010 min
 Response: 441011
 Conc: 117.28 ng/ml



#19 AR-1242-4

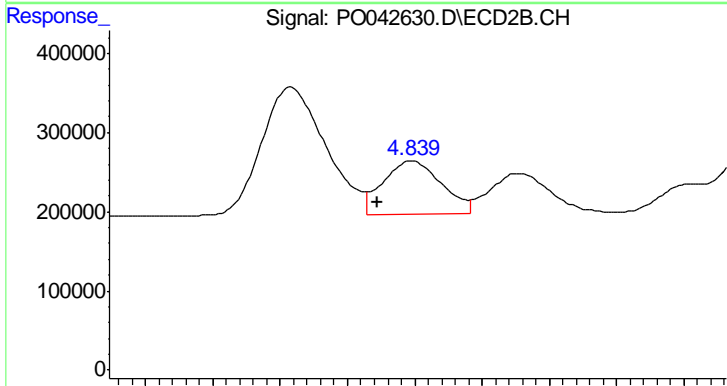
R.T.: 4.666 min
 Delta R.T.: 0.002 min
 Response: 780083
 Conc: 149.01 ng/ml



#20 AR-1242-5

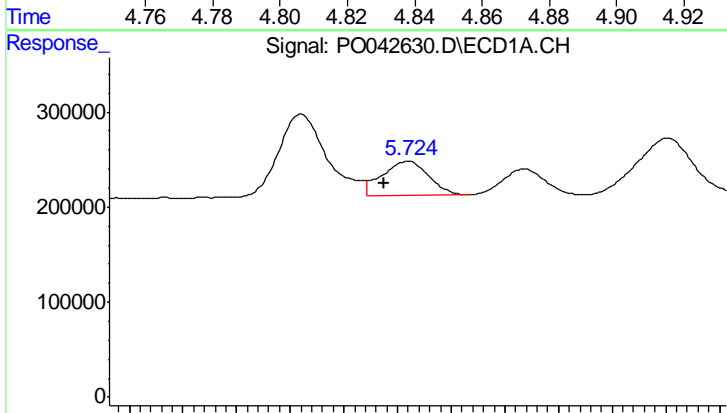
R.T.: 5.821 min
 Delta R.T.: -0.029 min
 Response: 879265
 Conc: 210.81 ng/ml

Instrument :
 ECD_O
 ClientSampleId :
 PB106736BS



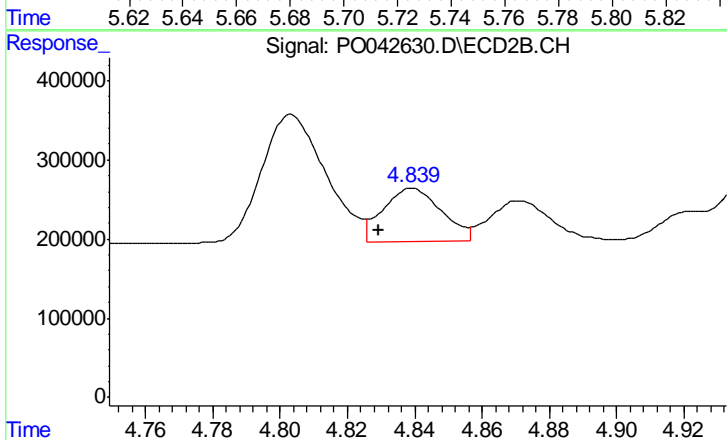
#20 AR-1242-5

R.T.: 4.839 min
 Delta R.T.: 0.010 min
 Response: 809962
 Conc: 140.08 ng/ml



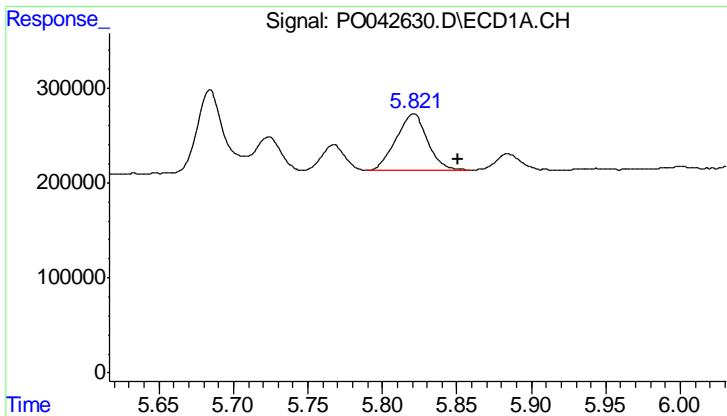
#21 AR-1248-1

R.T.: 5.724 min
 Delta R.T.: 0.009 min
 Response: 441011
 Conc: 60.99 ng/ml



#21 AR-1248-1

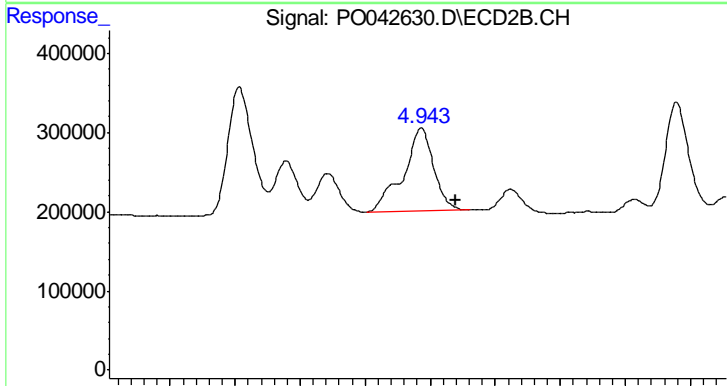
R.T.: 4.839 min
 Delta R.T.: 0.010 min
 Response: 809962
 Conc: 74.09 ng/ml



#22 AR-1248-2

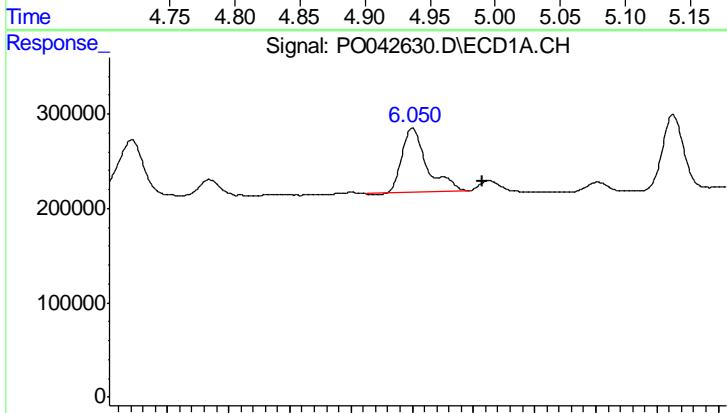
R.T.: 5.821 min
 Delta R.T.: -0.030 min
 Response: 879265
 Conc: 140.25 ng/ml

Instrument :
 ECD_O
 ClientSampleId :
 PB106736BS



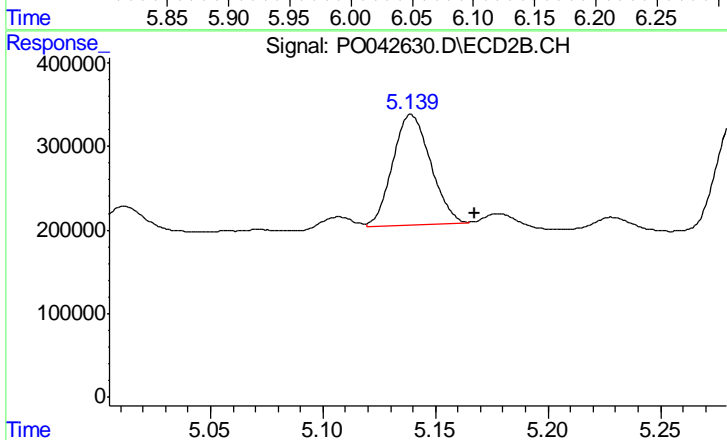
#22 AR-1248-2

R.T.: 4.943 min
 Delta R.T.: -0.027 min
 Response: 1719773
 Conc: 176.87 ng/ml



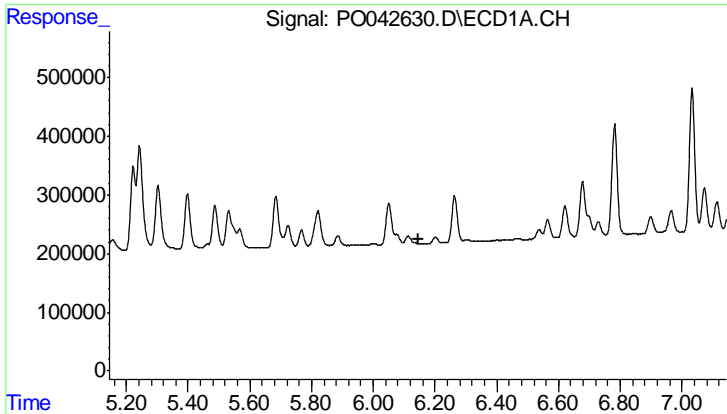
#23 AR-1248-3

R.T.: 6.050 min
 Delta R.T.: -0.057 min
 Response: 965814
 Conc: 105.62 ng/ml



#23 AR-1248-3

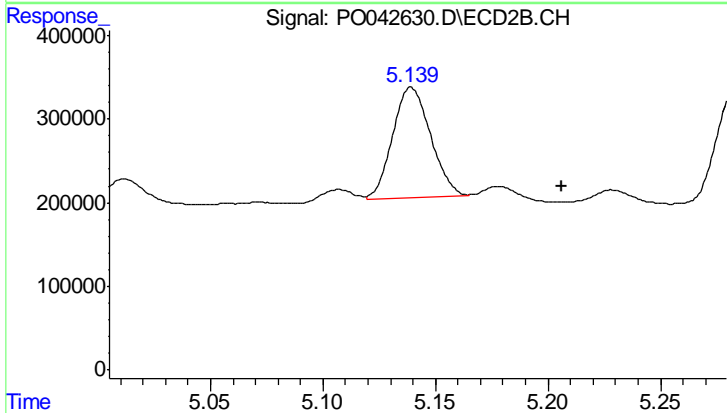
R.T.: 5.139 min
 Delta R.T.: -0.028 min
 Response: 1535534
 Conc: 90.54 ng/ml



#24 AR-1248-4

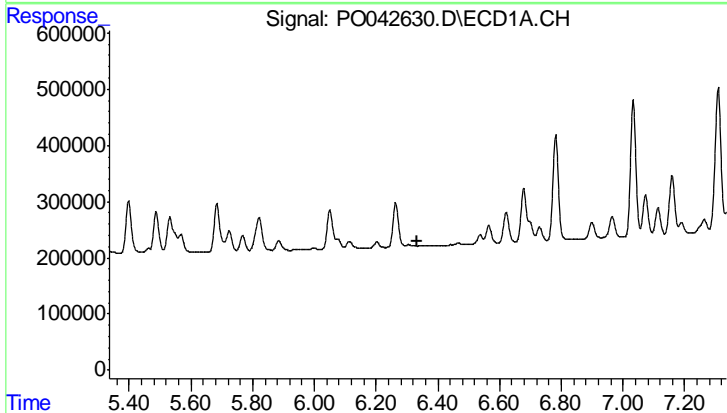
R.T.: 0.000 min
 Exp R.T.: 6.145 min
 Response: 0
 Conc: N.D.

Instrument :
 ECD_O
 ClientSampleId :
 PB106736BS



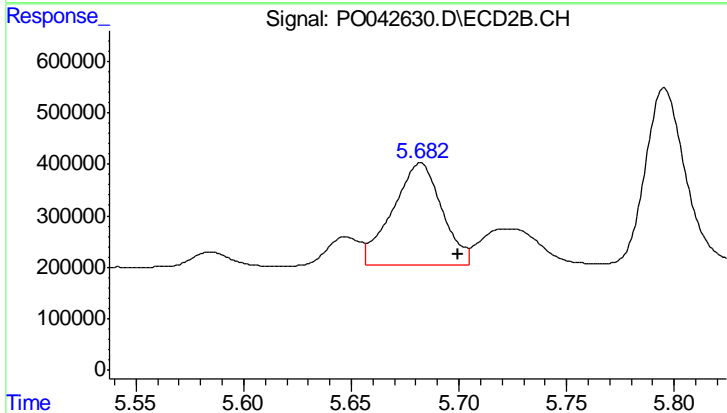
#24 AR-1248-4

R.T.: 5.139 min
 Delta R.T.: -0.067 min
 Response: 1535534
 Conc: 113.72 ng/ml



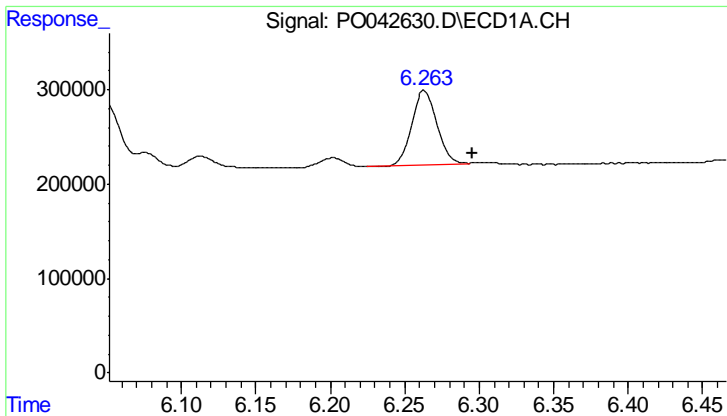
#25 AR-1248-5

R.T.: 0.000 min
 Exp R.T.: 6.335 min
 Response: 0
 Conc: N.D.



#25 AR-1248-5

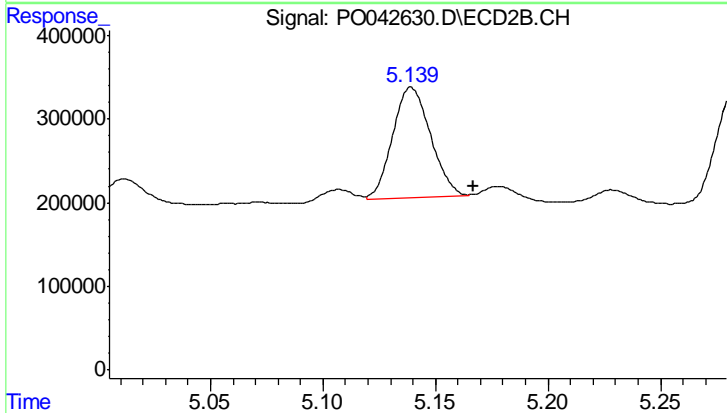
R.T.: 5.682 min
 Delta R.T.: -0.018 min
 Response: 3160016
 Conc: 410.10 ng/ml



#26 AR-1254-1

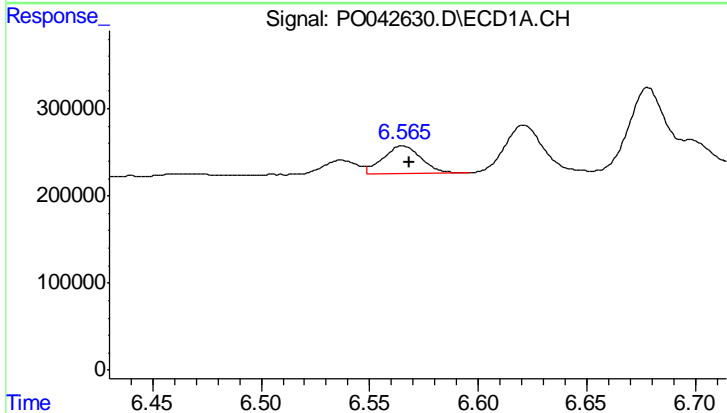
R.T.: 6.263 min
 Delta R.T.: -0.033 min
 Response: 919567
 Conc: 65.32 ng/ml

Instrument :
 ECD_O
 ClientSampleId :
 PB106736BS



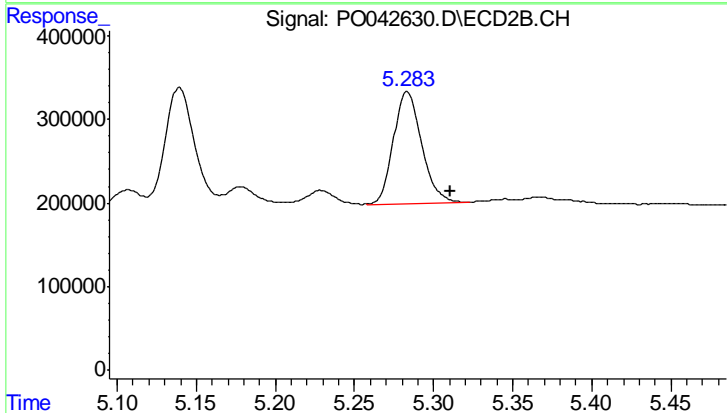
#26 AR-1254-1

R.T.: 5.139 min
 Delta R.T.: -0.028 min
 Response: 1535534
 Conc: 83.02 ng/ml



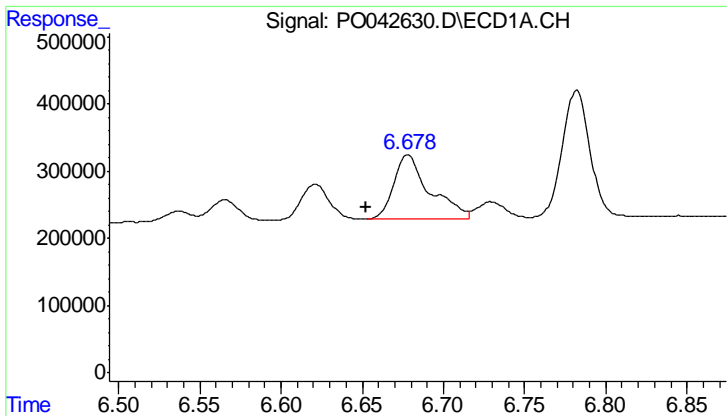
#27 AR-1254-2

R.T.: 6.565 min
 Delta R.T.: -0.003 min
 Response: 380118
 Conc: 43.70 ng/ml



#27 AR-1254-2

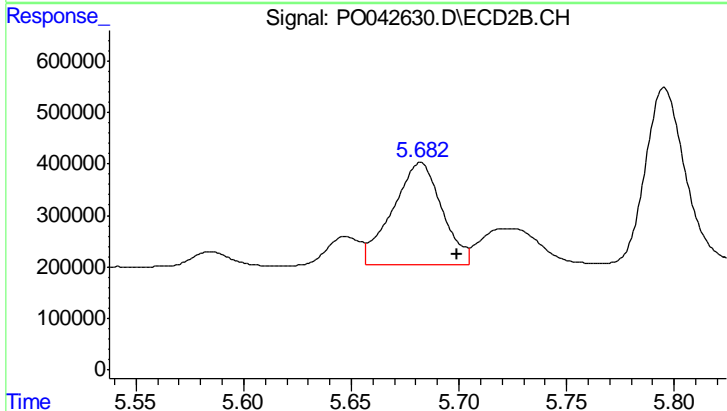
R.T.: 5.283 min
 Delta R.T.: -0.027 min
 Response: 1663973
 Conc: 100.63 ng/ml



#28 AR-1254-3

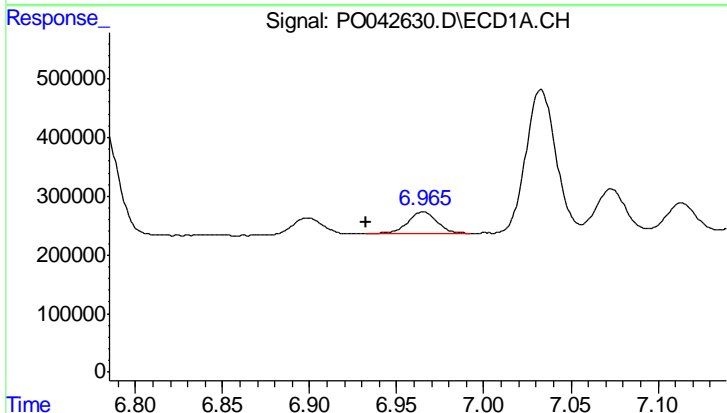
R.T.: 6.678 min
 Delta R.T.: 0.026 min
 Response: 1458465
 Conc: 94.10 ng/ml

Instrument :
 ECD_O
 ClientSampled :
 PB106736BS



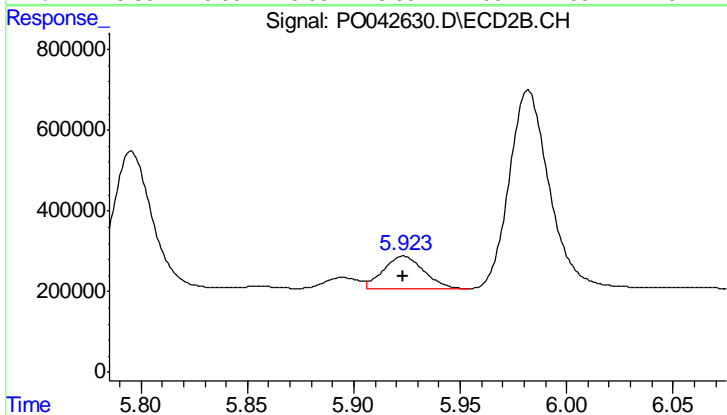
#28 AR-1254-3

R.T.: 5.682 min
 Delta R.T.: -0.017 min
 Response: 3160016
 Conc: 114.86 ng/ml



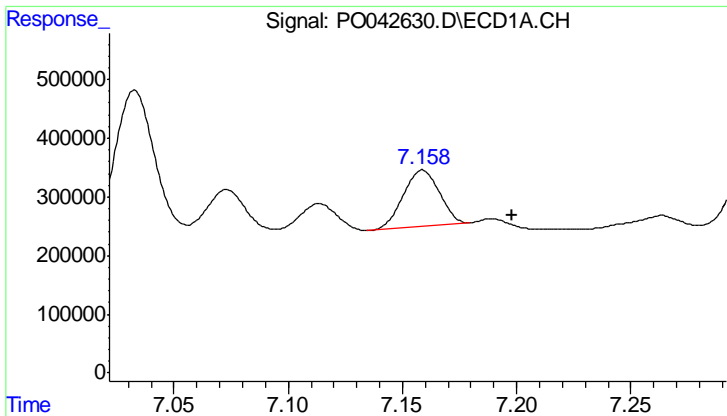
#29 AR-1254-4

R.T.: 6.965 min
 Delta R.T.: 0.033 min
 Response: 440924
 Conc: 33.61 ng/ml



#29 AR-1254-4

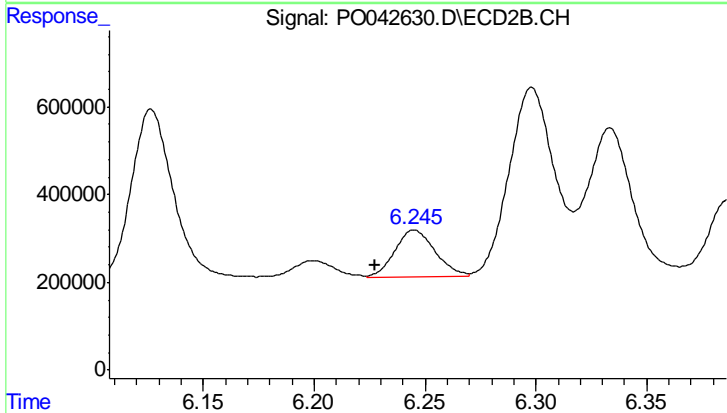
R.T.: 5.923 min
 Delta R.T.: 0.000 min
 Response: 1046888
 Conc: 53.73 ng/ml



#30 AR-1254-5

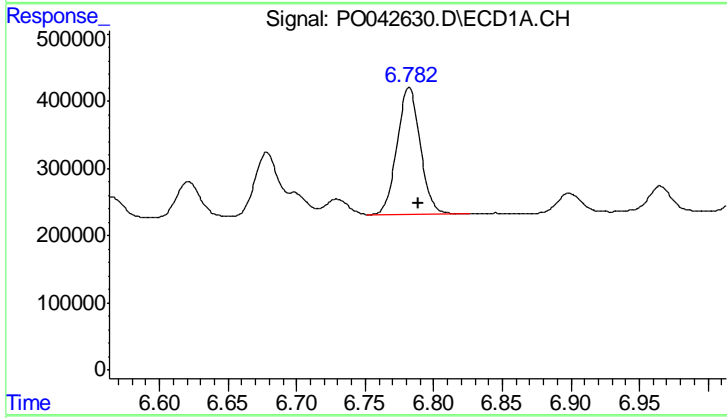
R.T.: 7.159 min
Delta R.T.: -0.039 min
Response: 1062344
Conc: 112.85 ng/ml

Instrument :
ECD_O
ClientSampled :
PB106736BS



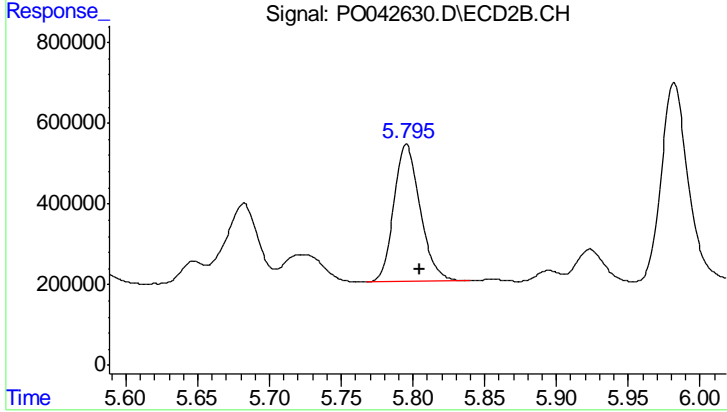
#30 AR-1254-5

R.T.: 6.245 min
Delta R.T.: 0.018 min
Response: 1350288
Conc: 101.94 ng/ml



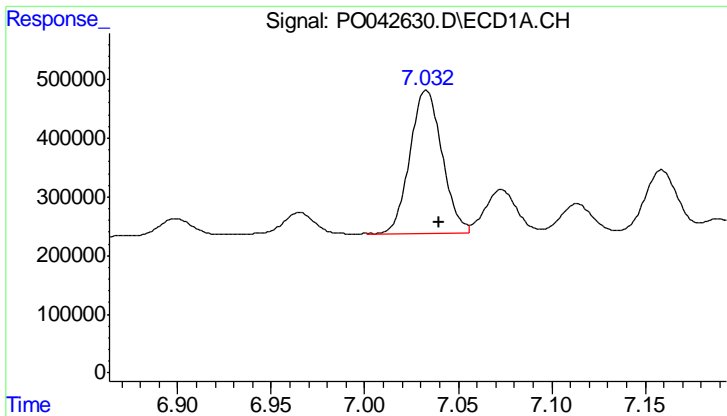
#31 AR-1260-1

R.T.: 6.782 min
Delta R.T.: -0.007 min
Response: 2228990
Conc: 162.02 ng/ml



#31 AR-1260-1

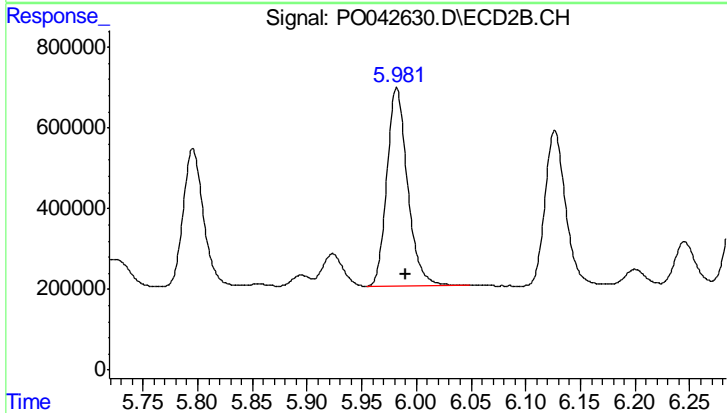
R.T.: 5.795 min
Delta R.T.: -0.009 min
Response: 4348903
Conc: 180.14 ng/ml



#32 AR-1260-2

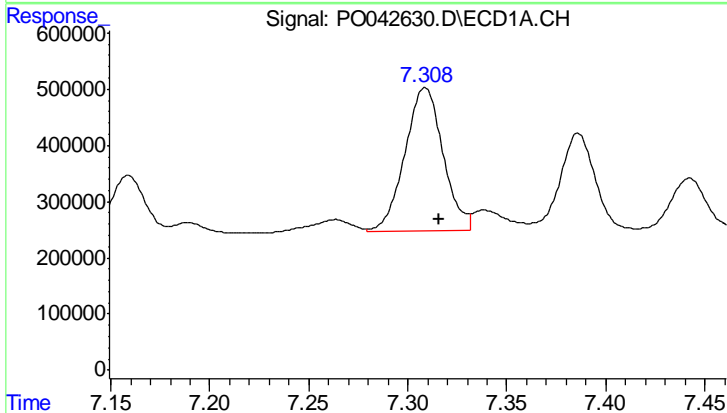
R.T.: 7.033 min
 Delta R.T.: -0.007 min
 Response: 2915537
 Conc: 159.39 ng/ml

Instrument :
 ECD_O
 ClientSampled :
 PB106736BS



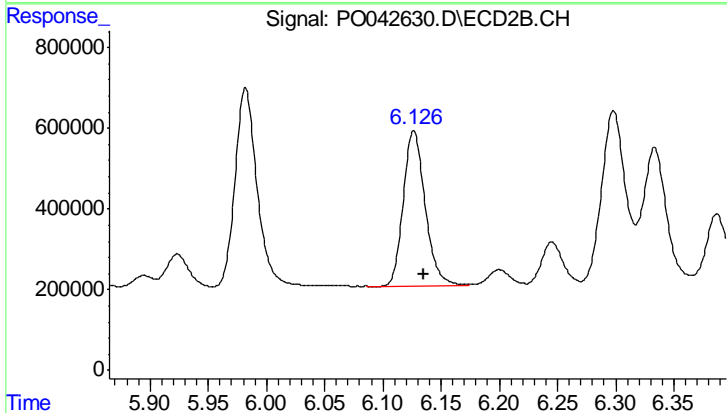
#32 AR-1260-2

R.T.: 5.982 min
 Delta R.T.: -0.009 min
 Response: 6433653
 Conc: 191.52 ng/ml



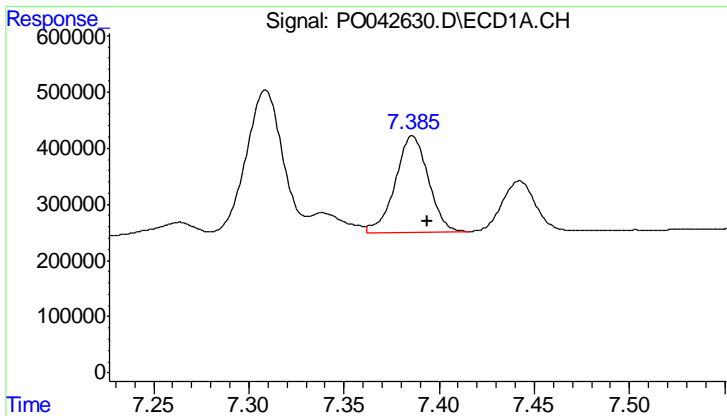
#33 AR-1260-3

R.T.: 7.309 min
 Delta R.T.: -0.007 min
 Response: 3426547
 Conc: 164.91 ng/ml



#33 AR-1260-3

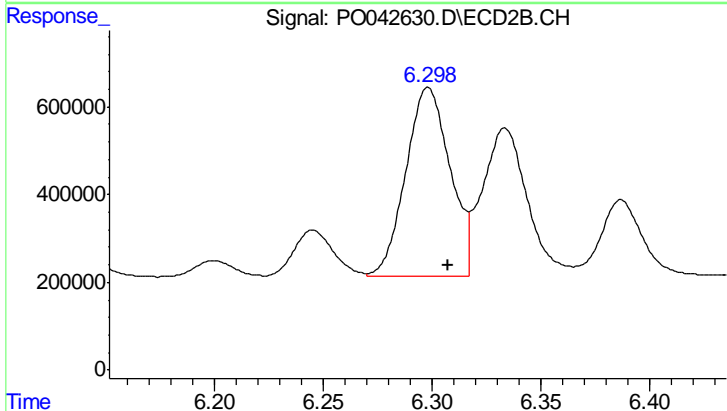
R.T.: 6.126 min
 Delta R.T.: -0.009 min
 Response: 5015595
 Conc: 176.19 ng/ml



#34 AR-1260-4

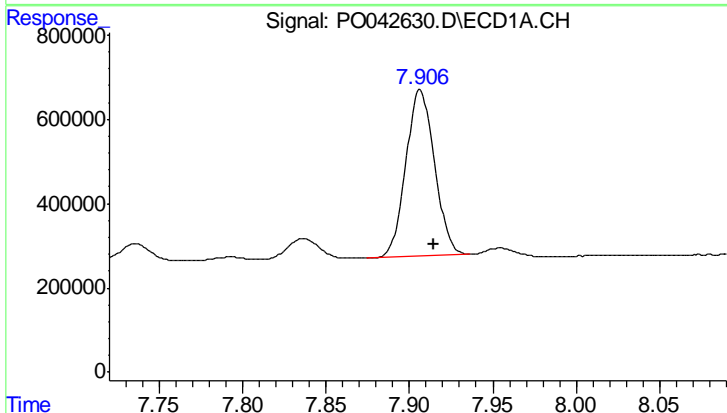
R.T.: 7.386 min
 Delta R.T.: -0.008 min
 Response: 2080370
 Conc: 140.55 ng/ml

Instrument :
 ECD_O
 ClientSampled :
 PB106736BS



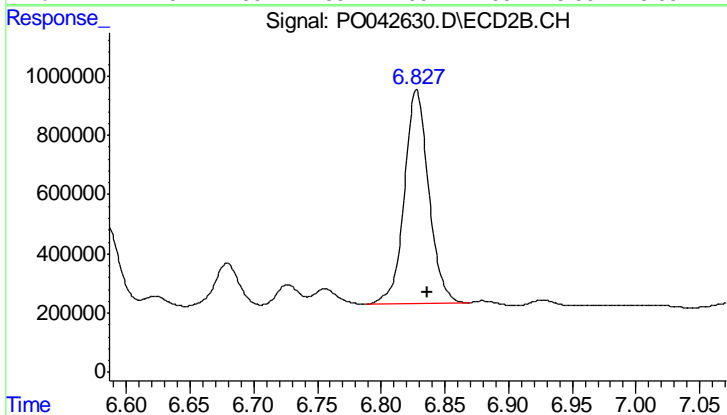
#34 AR-1260-4

R.T.: 6.298 min
 Delta R.T.: -0.009 min
 Response: 6132715
 Conc: 179.39 ng/ml



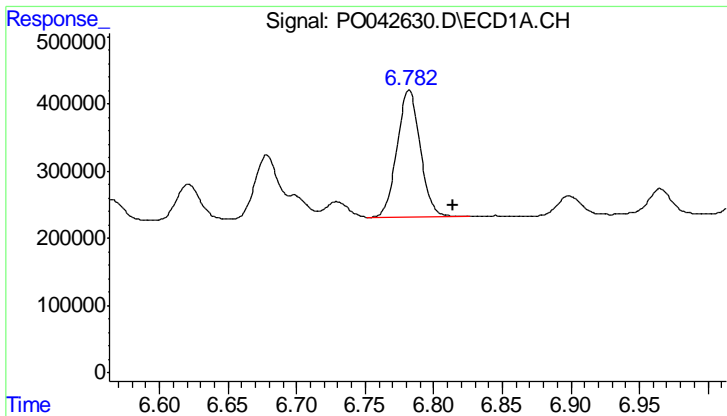
#35 AR-1260-5

R.T.: 7.906 min
 Delta R.T.: -0.008 min
 Response: 4745726
 Conc: 140.39 ng/ml



#35 AR-1260-5

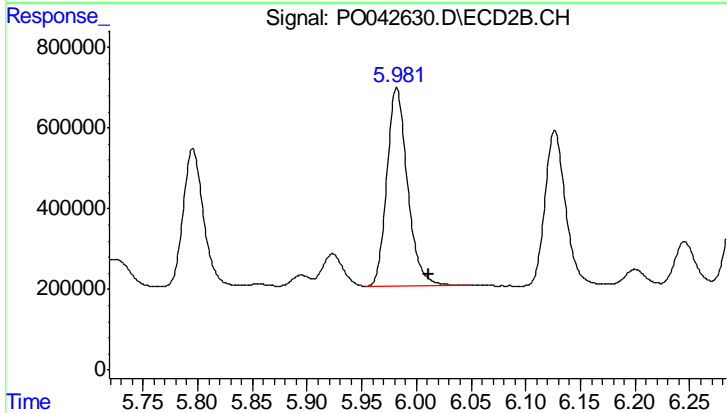
R.T.: 6.828 min
 Delta R.T.: -0.009 min
 Response: 9611287
 Conc: 142.02 ng/ml



#36 AR-1262-1

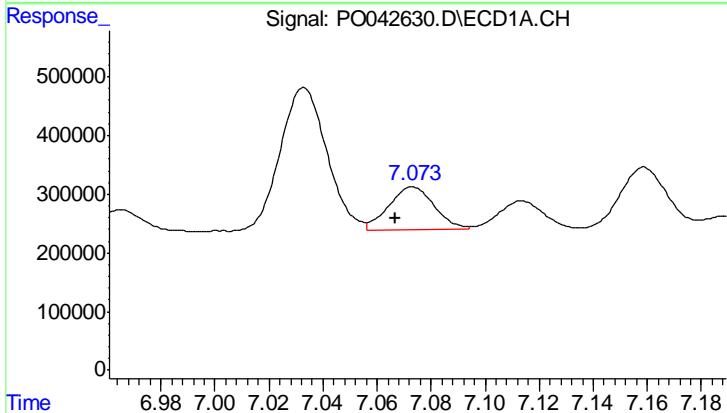
R.T.: 6.782 min
 Delta R.T.: -0.032 min
 Response: 2228990
 Conc: 235.68 ng/ml

Instrument :
 ECD_O
 ClientSampled :
 PB106736BS



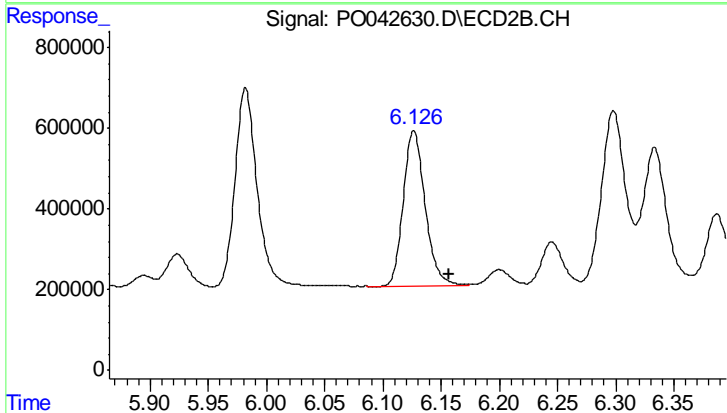
#36 AR-1262-1

R.T.: 5.982 min
 Delta R.T.: -0.029 min
 Response: 6433653
 Conc: 289.67 ng/ml



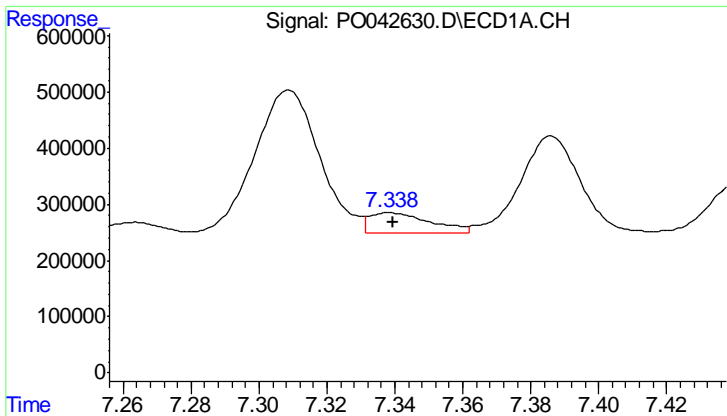
#37 AR-1262-2

R.T.: 7.073 min
 Delta R.T.: 0.007 min
 Response: 842360
 Conc: 72.35 ng/ml



#37 AR-1262-2

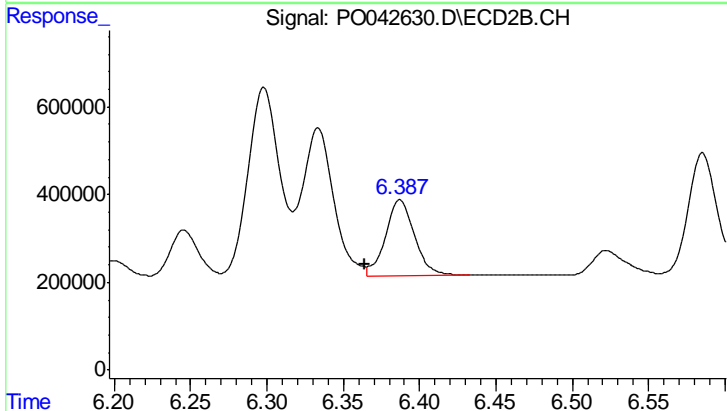
R.T.: 6.126 min
 Delta R.T.: -0.031 min
 Response: 5015595
 Conc: 249.40 ng/ml



#38 AR-1262-3

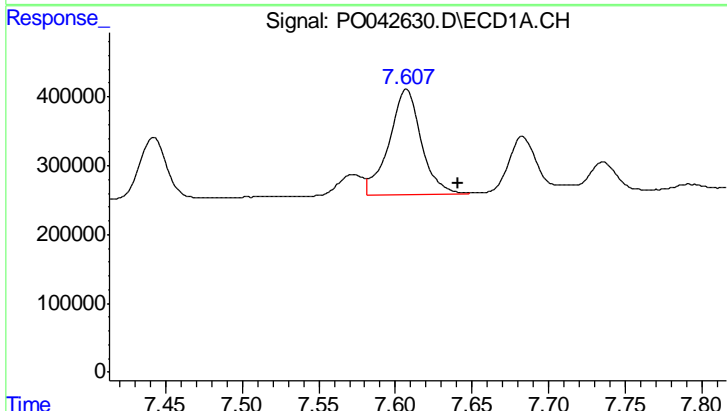
R.T.: 7.339 min
 Delta R.T.: 0.000 min
 Response: 451507
 Conc: 39.24 ng/ml

Instrument :
 ECD_O
 ClientSampleId :
 PB106736BS



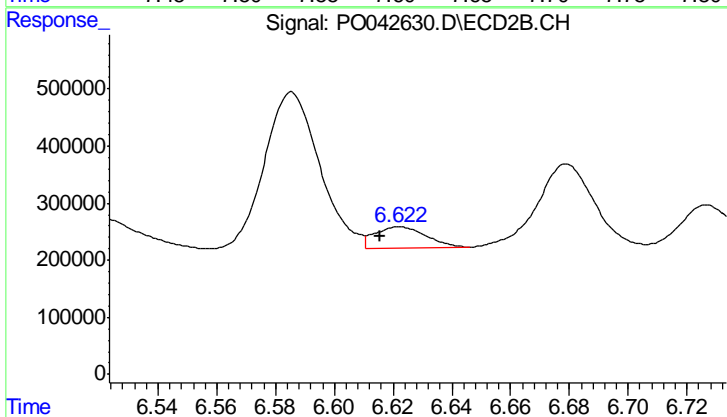
#38 AR-1262-3

R.T.: 6.387 min
 Delta R.T.: 0.023 min
 Response: 2270145
 Conc: 61.25 ng/ml



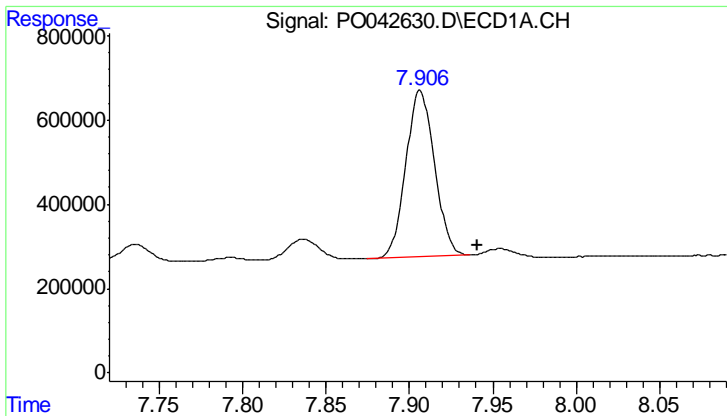
#39 AR-1262-4

R.T.: 7.607 min
 Delta R.T.: -0.034 min
 Response: 2224539
 Conc: 145.01 ng/ml



#39 AR-1262-4

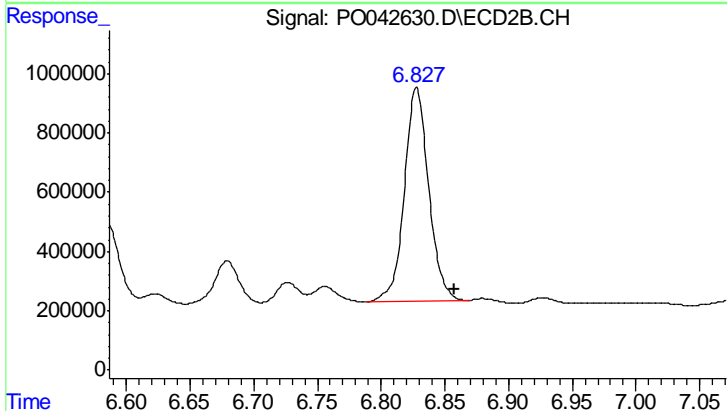
R.T.: 6.622 min
 Delta R.T.: 0.007 min
 Response: 437897
 Conc: 15.81 ng/ml



#40 AR-1262-5

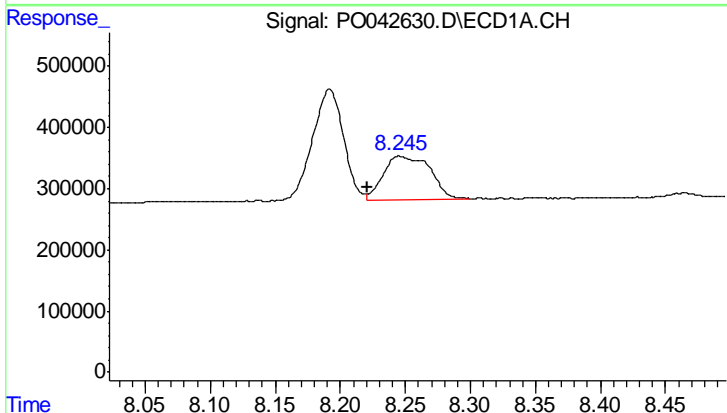
R.T.: 7.906 min
 Delta R.T.: -0.035 min
 Response: 4745726
 Conc: 147.42 ng/ml

Instrument :
 ECD_O
 ClientSampleId :
 PB106736BS



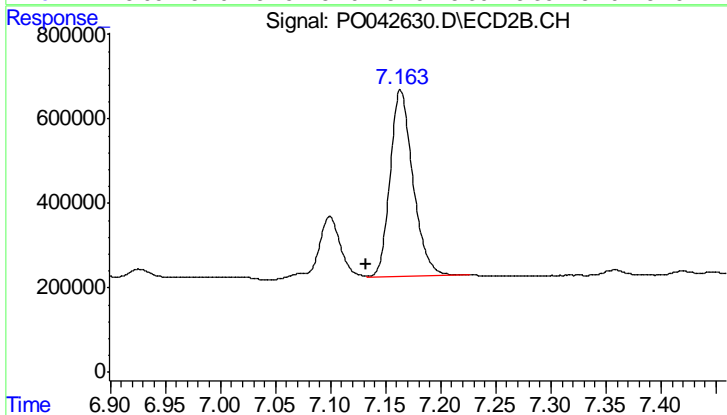
#40 AR-1262-5

R.T.: 6.828 min
 Delta R.T.: -0.030 min
 Response: 9611287
 Conc: 151.70 ng/ml



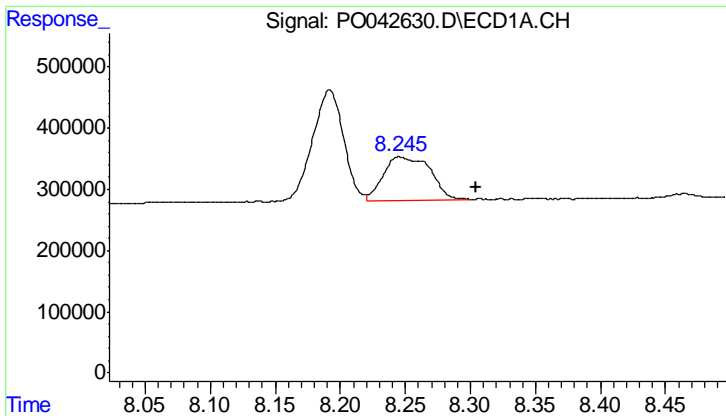
#41 AR-1268-1

R.T.: 8.246 min
 Delta R.T.: 0.024 min
 Response: 1750017
 Conc: 46.31 ng/ml



#41 AR-1268-1

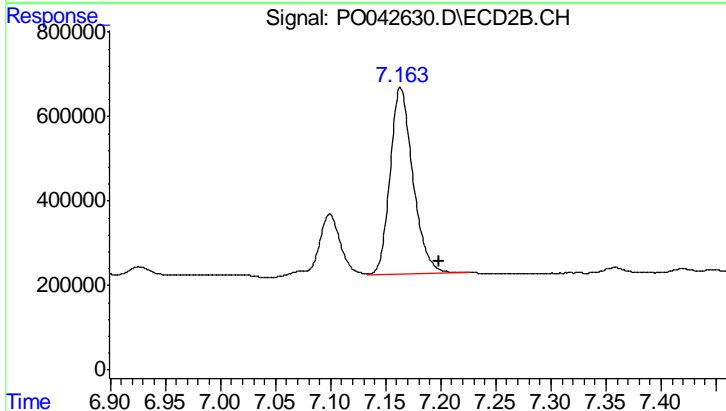
R.T.: 7.163 min
 Delta R.T.: 0.031 min
 Response: 6340270
 Conc: 86.51 ng/ml



#42 AR-1268-2

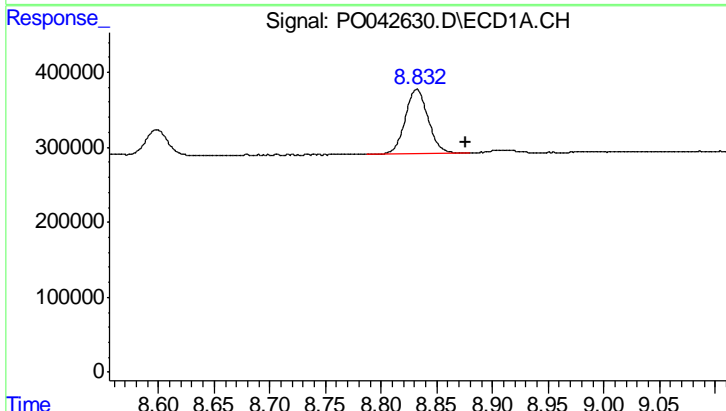
R.T.: 8.246 min
 Delta R.T.: -0.059 min
 Response: 1750017
 Conc: 52.74 ng/ml

Instrument :
 ECD_O
 ClientSampleId :
 PB106736BS



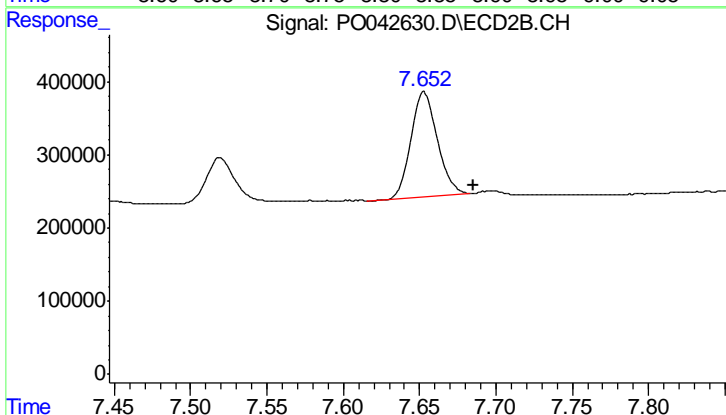
#42 AR-1268-2

R.T.: 7.163 min
 Delta R.T.: -0.034 min
 Response: 6340270
 Conc: 98.06 ng/ml



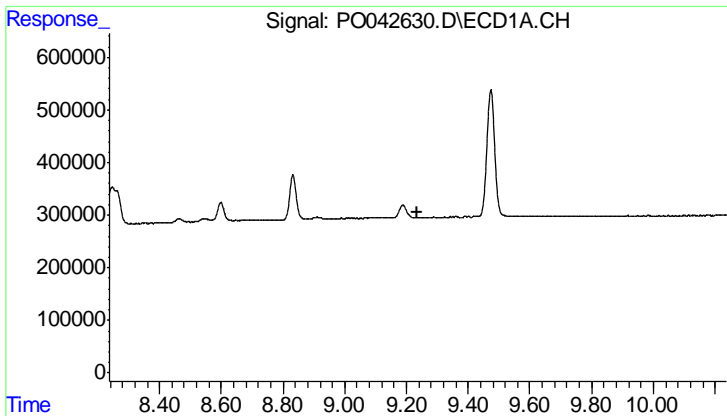
#44 AR-1268-4

R.T.: 8.832 min
 Delta R.T.: -0.044 min
 Response: 1228765
 Conc: 98.58 ng/ml



#44 AR-1268-4

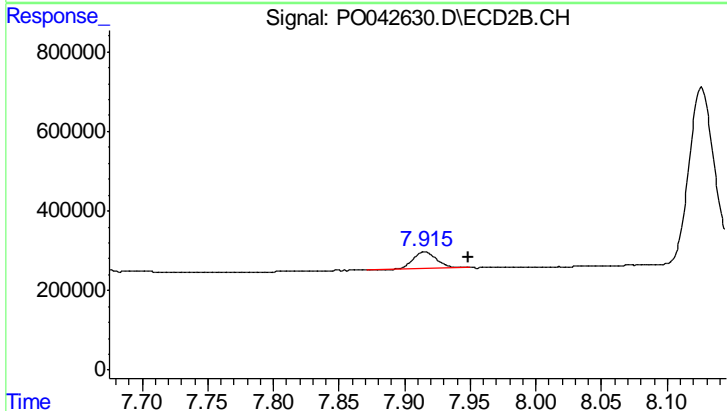
R.T.: 7.653 min
 Delta R.T.: -0.032 min
 Response: 1772855
 Conc: 79.80 ng/ml



#45 AR-1268-5

R.T.: 0.000 min
 Exp R.T.: 9.237 min
 Response: 0
 Conc: N.D.

Instrument :
 ECD_O
 ClientSampleId :
 PB106736BS



#45 AR-1268-5

R.T.: 7.915 min
 Delta R.T.: -0.034 min
 Response: 538805
 Conc: 3.74 ng/ml