

Data Path : Z:\pestpcbsrv\HPCHEM1\ECD_0\Data\P0022819\
 Data File : P0054118.D
 Signal(s) : Signal #1: ECD1A.CH Signal #2: ECD2B.CH
 Acq On : 28 Feb 2019 9:12
 Operator : SM/SJ
 Sample : I.BLK
 Misc :
 ALS Vial : 2 Sample Multiplier: 1

Instrument :
 ECD_0
 ClientSampleId :
 I.BLK

Integration File signal 1: autoint1.e
 Integration File signal 2: autoint2.e
 Quant Time: Feb 28 10:12:21 2019
 Quant Method : Z:\pestpcbsrv\HPCHEM1\ECD_0\methods\P0022619.M
 Quant Title : GC EXTRACTABLES
 QLast Update : Wed Feb 27 04:24:32 2019
 Response via : Initial Calibration
 Integrator: ChemStation 6890 Scale Mode: Small noise peaks clipped

Volume Inj. : 2 µl
 Signal #1 Phase : ZB-MR1 Signal #2 Phase: ZB-MR2
 Signal #1 Info : 30Mx0.32mmx 0.50µ Signal #2 Info : 30M x 0.32mm x 0.25µm

Compound	RT#1	RT#2	Resp#1	Resp#2	ng/ml	ng/ml

System Monitoring Compounds						
1) SA Tetrachlo...	4.046	3.126	37830454	5406601	17.638	21.089
2) SA Decachlor...	9.379	7.702	21526866	5271358	19.726	19.841

Target Compounds

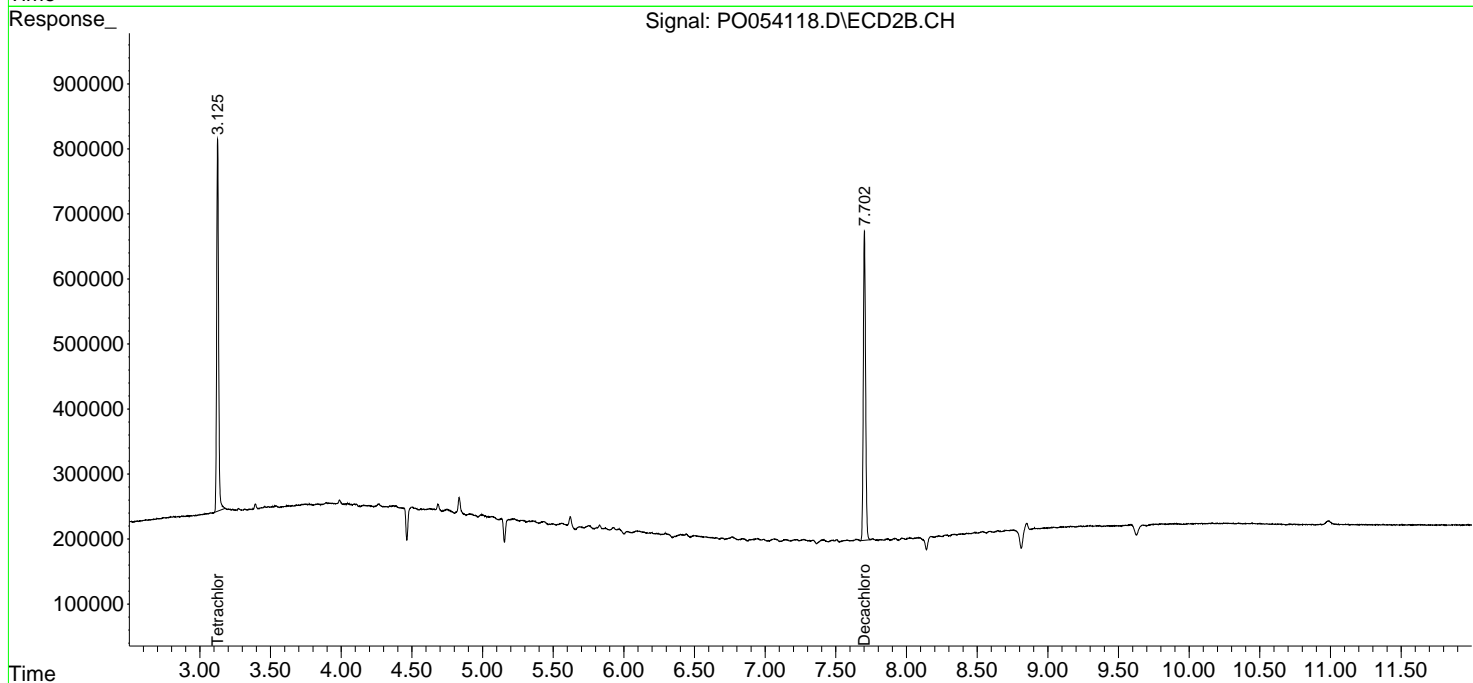
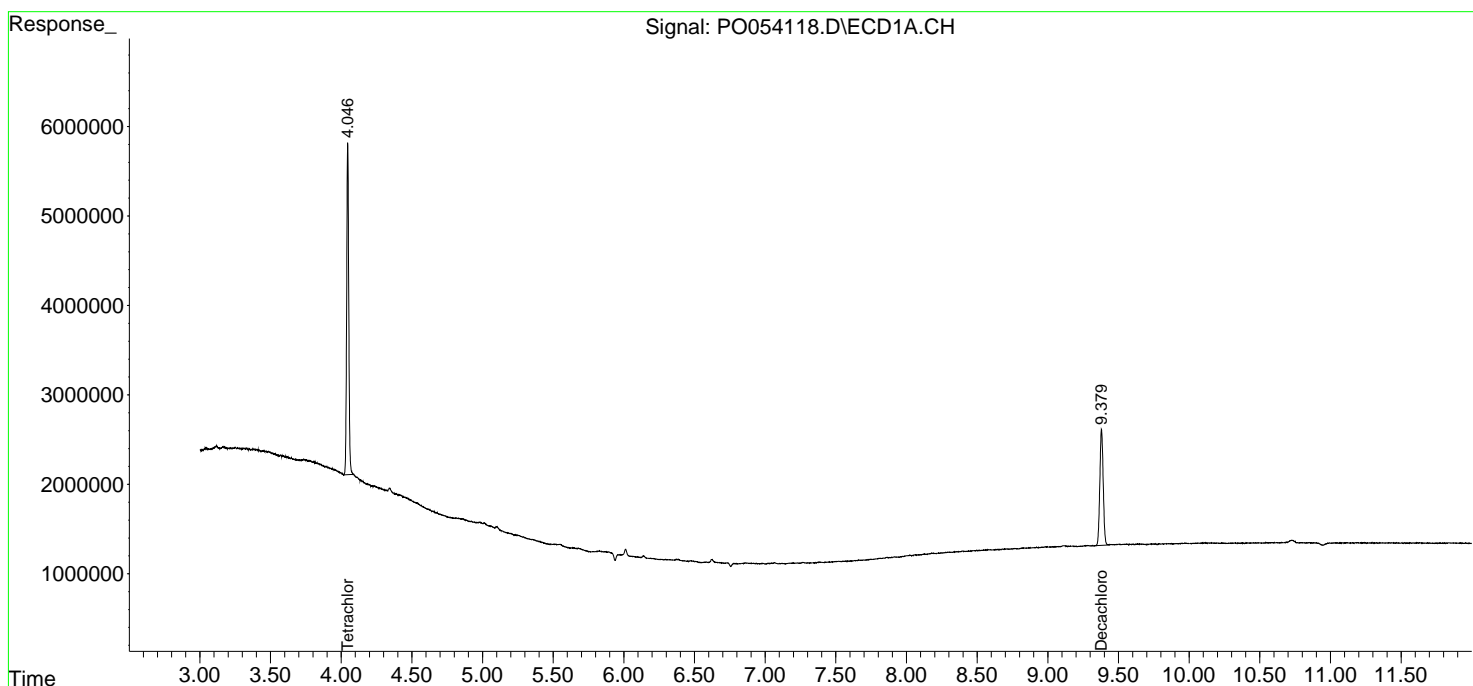
(f)=RT Delta > 1/2 Window (#)=Amounts differ by > 25% (m)=manual int.

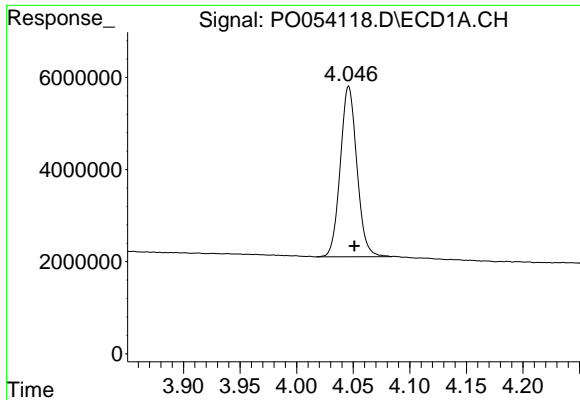
Data Path : Z:\pestpcbsrv\HPCHEM1\ECD_0\Data\P0022819\
 Data File : P0054118.D
 Signal(s) : Signal #1: ECD1A.CH Signal #2: ECD2B.CH
 Acq On : 28 Feb 2019 9:12
 Operator : SM/SJ
 Sample : I.BLK
 Misc :
 ALS Vial : 2 Sample Multiplier: 1

Instrument :
 ECD_O
 ClientSampled :
 I.BLK

Integration File signal 1: autoint1.e
 Integration File signal 2: autoint2.e
 Quant Time: Feb 28 10:12:21 2019
 Quant Method : Z:\pestpcbsrv\HPCHEM1\ECD_0\methods\P0022619.M
 Quant Title : GC EXTRACTABLES
 QLast Update : Wed Feb 27 04:24:32 2019
 Response via : Initial Calibration
 Integrator: ChemStation 6890 Scale Mode: Small noise peaks clipped

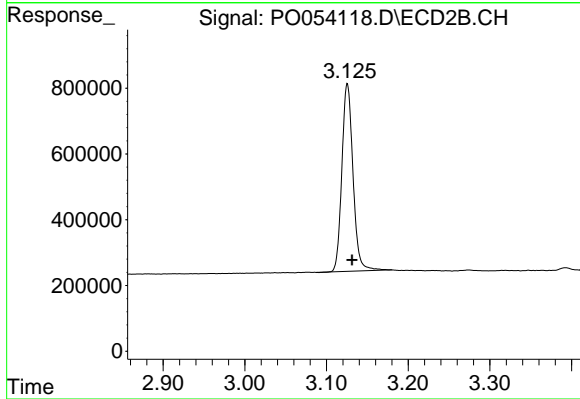
Volume Inj. : 2 µl
 Signal #1 Phase : ZB-MR1 Signal #2 Phase: ZB-MR2
 Signal #1 Info : 30Mx0.32mmx 0.50µ Signal #2 Info : 30M x 0.32mm x 0.25µm



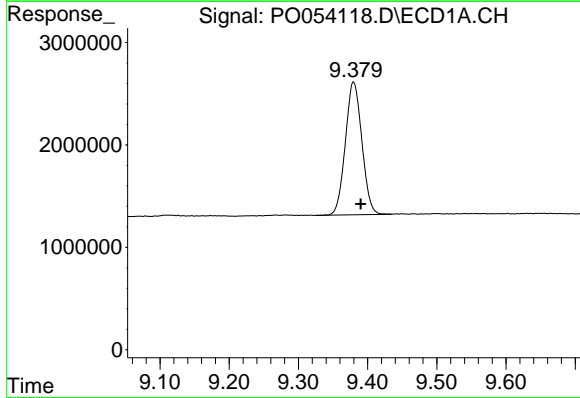


#1 Tetrachloro-m-xylene
R.T.: 4.046 min
Delta R.T.: -0.005 min
Response: 37830454
Conc: 17.64 ng/ml

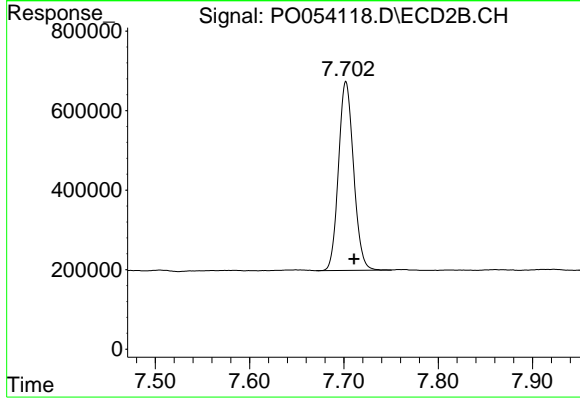
Instrument :
ECD_O
ClientSampled :
I.BLK



#1 Tetrachloro-m-xylene
R.T.: 3.126 min
Delta R.T.: -0.006 min
Response: 5406601
Conc: 21.09 ng/ml



#2 Decachlorobiphenyl
R.T.: 9.379 min
Delta R.T.: -0.011 min
Response: 21526866
Conc: 19.73 ng/ml



#2 Decachlorobiphenyl
R.T.: 7.702 min
Delta R.T.: -0.009 min
Response: 5271358
Conc: 19.84 ng/ml