

Data Path : Z:\pestpcbsrv\HPCHEM1\ECD\_0\Data\P0022819\  
 Data File : P0054123.D  
 Signal(s) : Signal #1: ECD1A.CH Signal #2: ECD2B.CH  
 Acq On : 28 Feb 2019 10:50  
 Operator : SM/SJ  
 Sample : K1353-07RE  
 Misc :  
 ALS Vial : 7 Sample Multiplier: 1

Instrument :  
 ECD\_0  
 ClientSampleId :  
 PL-02-022619-DRE

Integration File signal 1: autoint1.e  
 Integration File signal 2: autoint2.e  
 Quant Time: Feb 28 23:50:51 2019  
 Quant Method : Z:\pestpcbsrv\HPCHEM1\ECD\_0\methods\P0022619.M  
 Quant Title : GC EXTRACTABLES  
 QLast Update : Wed Feb 27 04:24:32 2019  
 Response via : Initial Calibration  
 Integrator: ChemStation 6890 Scale Mode: Small noise peaks clipped

Volume Inj. : 2 µl  
 Signal #1 Phase : ZB-MR1 Signal #2 Phase: ZB-MR2  
 Signal #1 Info : 30Mx0.32mmx 0.50µ Signal #2 Info : 30M x 0.32mm x 0.25µm

Compound	RT#1	RT#2	Resp#1	Resp#2	ng/ml	ng/ml
-----						
System Monitoring Compounds						
1) SA Tetrachlo...	4.043	3.125	10409655	1718353	4.853	6.703 #
2) SA Decachlor...	9.374	7.701	4918322	1182413	4.507	4.450

Target Compounds

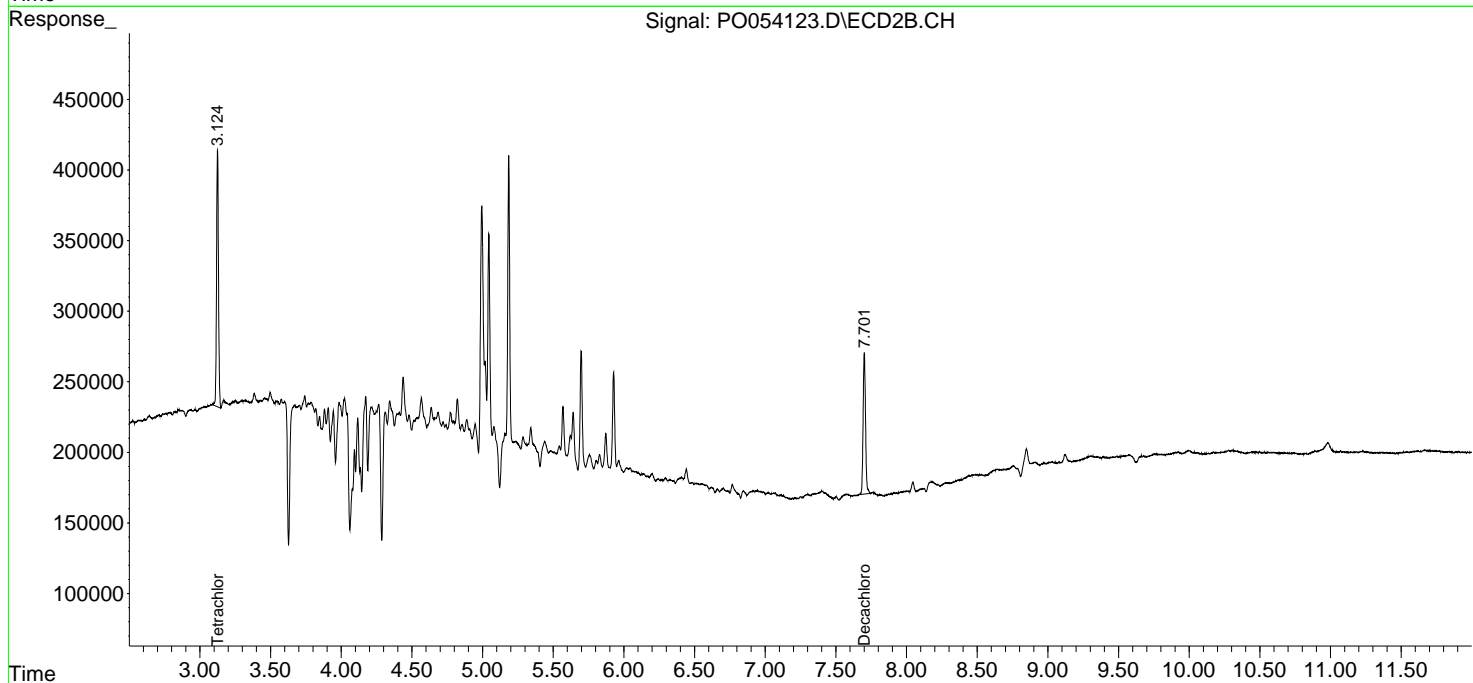
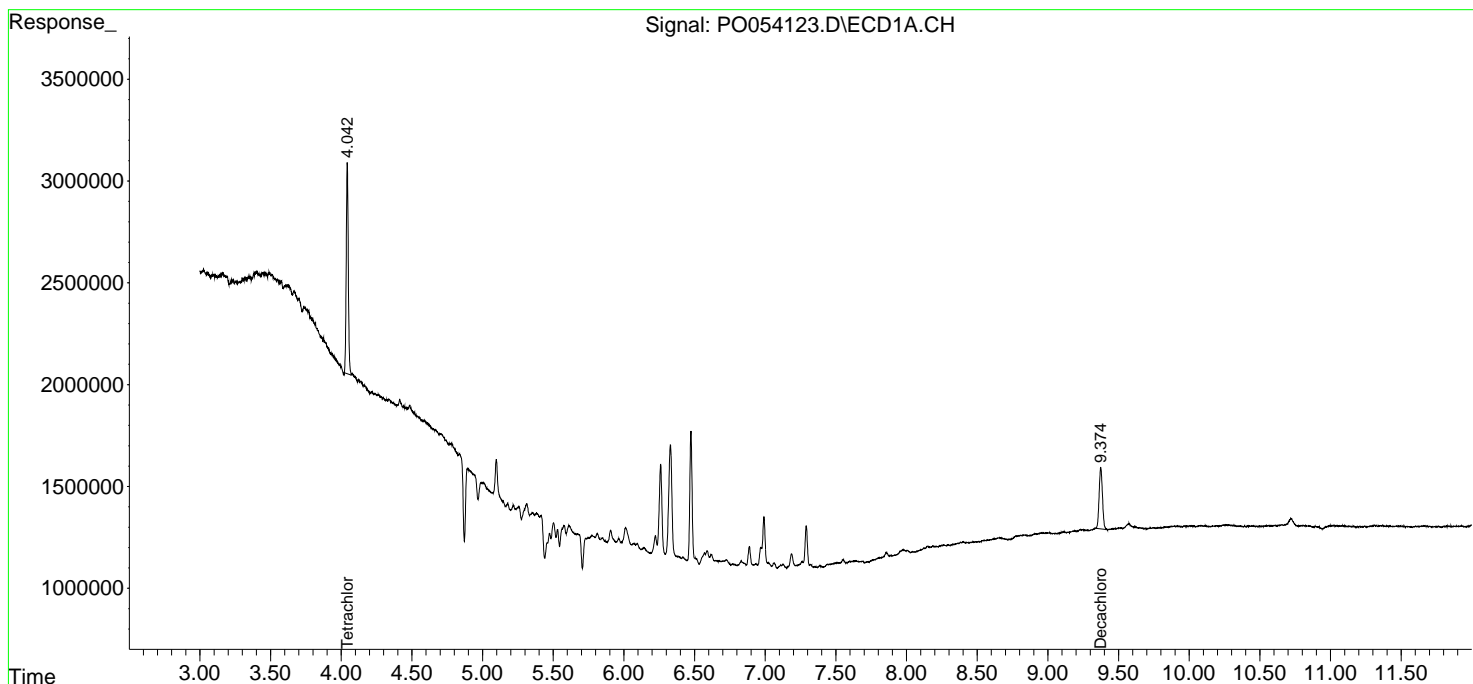
(f)=RT Delta > 1/2 Window (#)=Amounts differ by > 25% (m)=manual int.

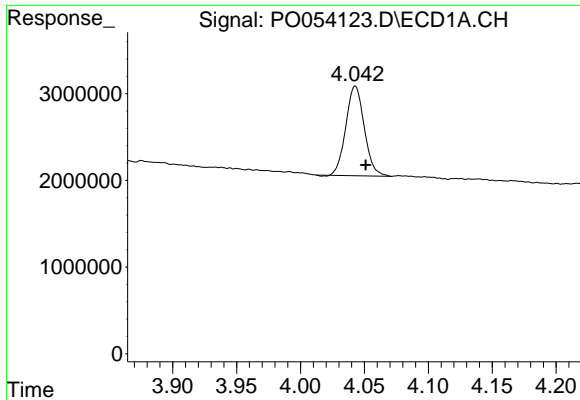
Data Path : Z:\pestpcbsrv\HPCHEM1\ECD\_0\Data\P0022819\  
 Data File : P0054123.D  
 Signal(s) : Signal #1: ECD1A.CH Signal #2: ECD2B.CH  
 Acq On : 28 Feb 2019 10:50  
 Operator : SM/SJ  
 Sample : K1353-07RE  
 Misc :  
 ALS Vial : 7 Sample Multiplier: 1

Instrument :  
 ECD\_O  
 ClientSampleId :  
 PL-02-022619-DRE

Integration File signal 1: autoint1.e  
 Integration File signal 2: autoint2.e  
 Quant Time: Feb 28 23:50:51 2019  
 Quant Method : Z:\pestpcbsrv\HPCHEM1\ECD\_0\methods\P0022619.M  
 Quant Title : GC EXTRACTABLES  
 QLast Update : Wed Feb 27 04:24:32 2019  
 Response via : Initial Calibration  
 Integrator: ChemStation 6890 Scale Mode: Small noise peaks clipped

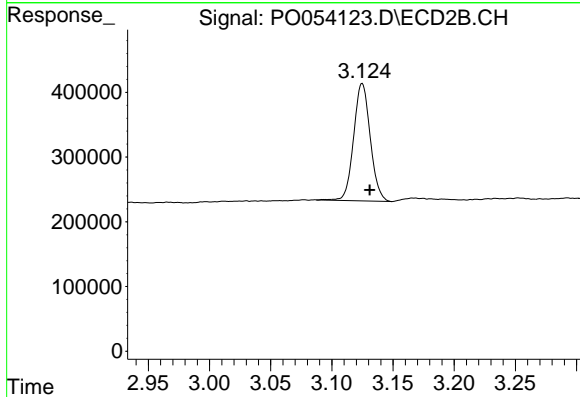
Volume Inj. : 2 µl  
 Signal #1 Phase : ZB-MR1 Signal #2 Phase: ZB-MR2  
 Signal #1 Info : 30Mx0.32mmx 0.50µ Signal #2 Info : 30M x 0.32mm x 0.25µm



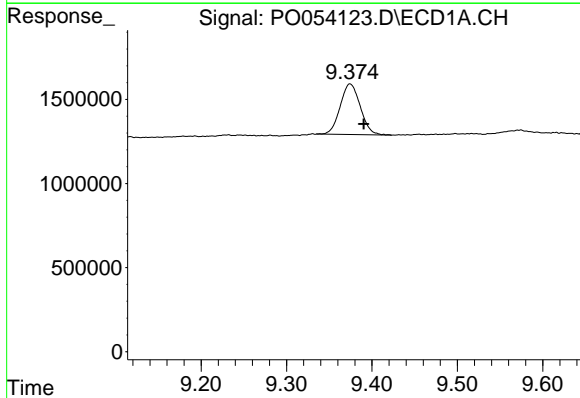


#1 Tetrachloro-m-xylene  
 R.T.: 4.043 min  
 Delta R.T.: -0.008 min  
 Response: 10409655  
 Conc: 4.85 ng/ml

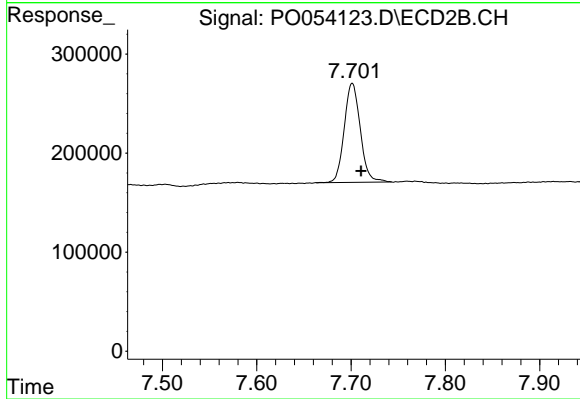
Instrument :  
 ECD\_O  
 ClientSampleId :  
 PL-02-022619-DRE



#1 Tetrachloro-m-xylene  
 R.T.: 3.125 min  
 Delta R.T.: -0.006 min  
 Response: 1718353  
 Conc: 6.70 ng/ml



#2 Decachlorobiphenyl  
 R.T.: 9.374 min  
 Delta R.T.: -0.016 min  
 Response: 4918322  
 Conc: 4.51 ng/ml



#2 Decachlorobiphenyl  
 R.T.: 7.701 min  
 Delta R.T.: -0.009 min  
 Response: 1182413  
 Conc: 4.45 ng/ml