

Data Path : Z:\pestpcbsrv\HPCHEM1\ECD_0\Data\P0030119\
 Data File : P0054186.D
 Signal(s) : Signal #1: ECD1A.CH Signal #2: ECD2B.CH
 Acq On : 01 Mar 2019 17:44
 Operator : SM/SJ
 Sample : I.BLK
 Misc :
 ALS Vial : 2 Sample Multiplier: 1

Instrument :
 ECD_0
 ClientSampleId :
 I.BLK

Integration File signal 1: autoint1.e
 Integration File signal 2: autoint2.e
 Quant Time: Mar 02 00:01:54 2019
 Quant Method : Z:\pestpcbsrv\HPCHEM1\ECD_0\methods\P0022619.M
 Quant Title : GC EXTRACTABLES
 QLast Update : Wed Feb 27 04:24:32 2019
 Response via : Initial Calibration
 Integrator: ChemStation 6890 Scale Mode: Small noise peaks clipped

Volume Inj. : 2 µl
 Signal #1 Phase : ZB-MR1 Signal #2 Phase: ZB-MR2
 Signal #1 Info : 30Mx0.32mmx 0.50µ Signal #2 Info : 30M x 0.32mm x 0.25µm

Compound	RT#1	RT#2	Resp#1	Resp#2	ng/ml	ng/ml

System Monitoring Compounds						
1) SA Tetrachlo...	4.037	3.121	62765158	5510561	29.264	21.495 #
2) SA Decachlor...	9.361	7.693	23167086	5994885	21.229	22.564

Target Compounds

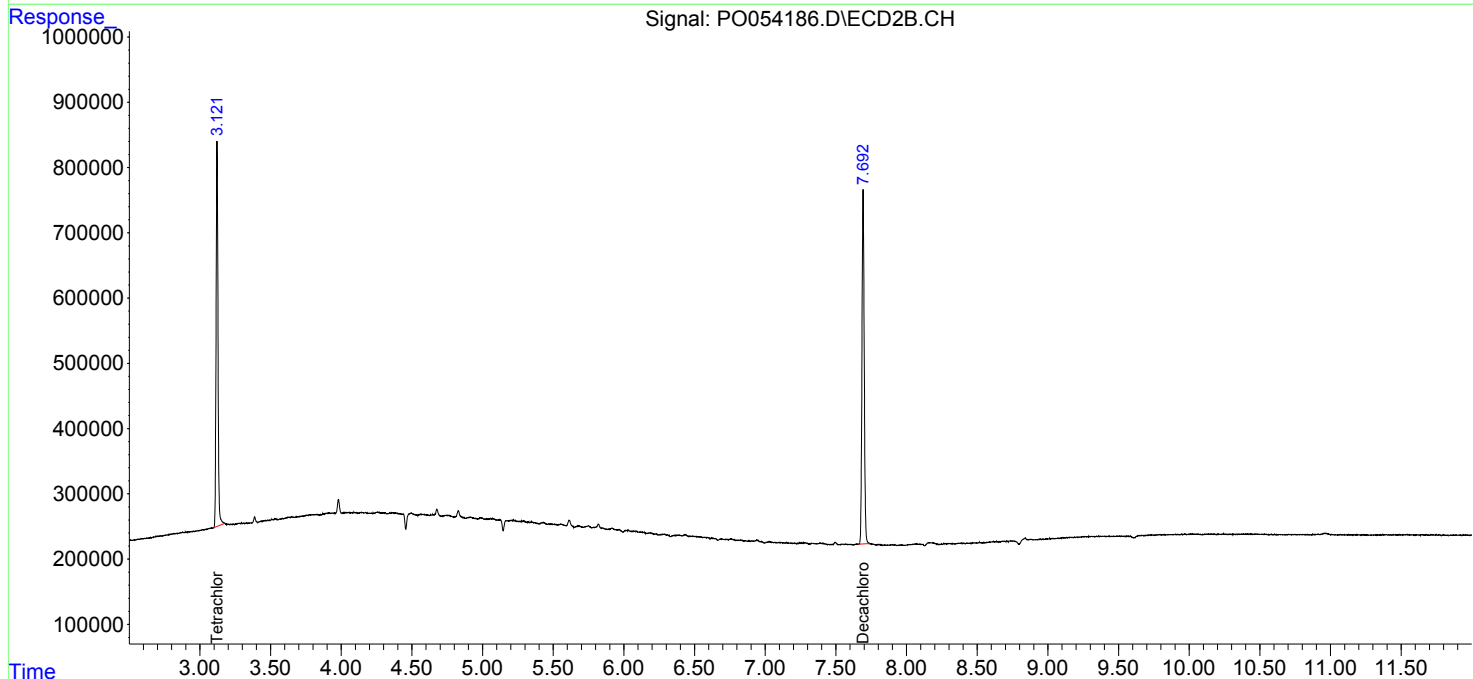
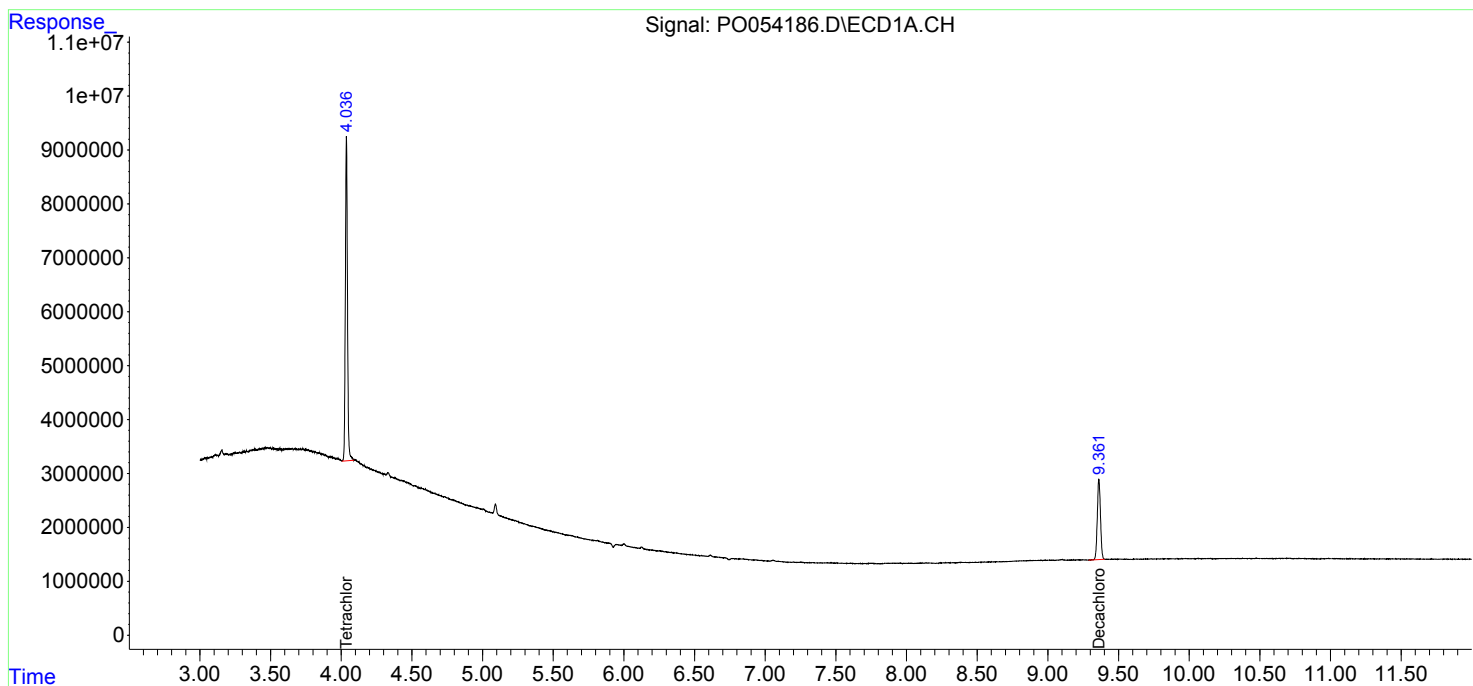
(f)=RT Delta > 1/2 Window (#)=Amounts differ by > 25% (m)=manual int.

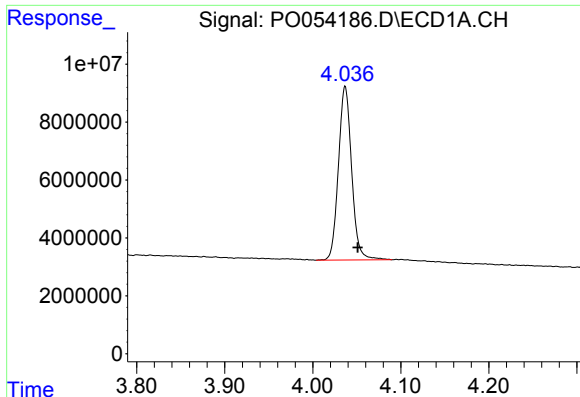
Data Path : Z:\pestpcbsrv\HPCHEM1\ECD_0\Data\P0030119\
 Data File : P0054186.D
 Signal(s) : Signal #1: ECD1A.CH Signal #2: ECD2B.CH
 Acq On : 01 Mar 2019 17:44
 Operator : SM/SJ
 Sample : I.BLK
 Misc :
 ALS Vial : 2 Sample Multiplier: 1

Instrument :
 ECD_O
 ClientSampled :
 I.BLK

Integration File signal 1: autoint1.e
 Integration File signal 2: autoint2.e
 Quant Time: Mar 02 00:01:54 2019
 Quant Method : Z:\pestpcbsrv\HPCHEM1\ECD_0\methods\P0022619.M
 Quant Title : GC EXTRACTABLES
 QLast Update : Wed Feb 27 04:24:32 2019
 Response via : Initial Calibration
 Integrator: ChemStation 6890 Scale Mode: Small noise peaks clipped

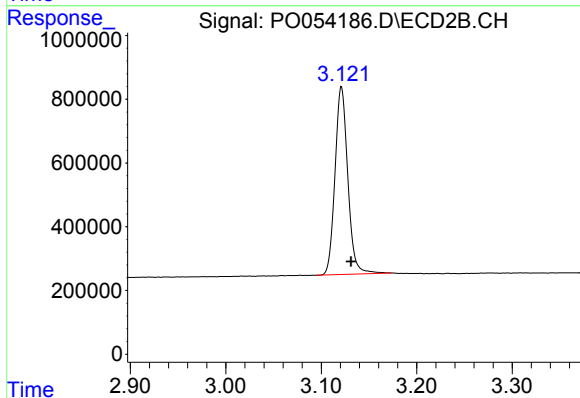
Volume Inj. : 2 µl
 Signal #1 Phase : ZB-MR1 Signal #2 Phase: ZB-MR2
 Signal #1 Info : 30Mx0.32mmx 0.50µ Signal #2 Info : 30M x 0.32mm x 0.25µm



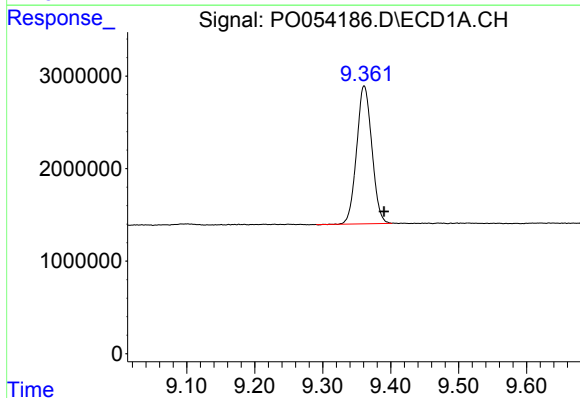


#1 Tetrachloro-m-xylene
 R.T.: 4.037 min
 Delta R.T.: -0.014 min
 Response: 62765158
 Conc: 29.26 ng/ml

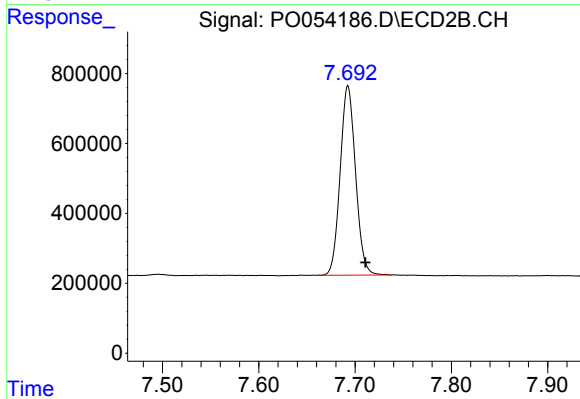
Instrument :
 ECD_O
 ClientSampled :
 I.BLK



#1 Tetrachloro-m-xylene
 R.T.: 3.121 min
 Delta R.T.: -0.010 min
 Response: 5510561
 Conc: 21.49 ng/ml



#2 Decachlorobiphenyl
 R.T.: 9.361 min
 Delta R.T.: -0.029 min
 Response: 23167086
 Conc: 21.23 ng/ml



#2 Decachlorobiphenyl
 R.T.: 7.693 min
 Delta R.T.: -0.018 min
 Response: 5994885
 Conc: 22.56 ng/ml