

Data Path : Z:\pestpcbsrv\HPCHEM1\ECD_0\Data\P0030220\
 Data File : P0066886.D
 Signal(s) : Signal #1: ECD1A.CH Signal #2: ECD2B.CH
 Acq On : 02 Mar 2020 12:40
 Operator : DD\AJ
 Sample : L1737-01
 Misc :
 ALS Vial : 14 Sample Multiplier: 1

Instrument :
 ECD_0
ClientSampleId :
 FK-BPM-03-013-ABCD

Integration File signal 1: autoint1.e
 Integration File signal 2: autoint2.e
 Quant Time: Mar 02 14:20:00 2020
 Quant Method : Z:\pestpcbsrv\HPCHEM1\ECD_0\methods\P0022620.M
 Quant Title : GC EXTRACTABLES
 QLast Update : Wed Feb 26 14:12:46 2020
 Response via : Initial Calibration
 Integrator: ChemStation 6890 Scale Mode: Small noise peaks clipped

Volume Inj. : 2 µl
 Signal #1 Phase : ZB-MR1 Signal #2 Phase: ZB-MR2
 Signal #1 Info : 30Mx0.32mmx 0.50µ Signal #2 Info : 30M x 0.32mm x 0.25µm

Compound	RT#1	RT#2	Resp#1	Resp#2	ng/ml	ng/ml

System Monitoring Compounds						
1) SA Tetrachlo...	4.135	3.404	978921	967390	24.006	21.905
2) SA Decachlor...	9.614	8.293	1015571	1068421	20.819	21.240
Target Compounds						
9) L2 AR-1221-2	0.000	3.697	0	15686	N.D.	45.423 #
10) L2 AR-1221-3	0.000	3.697	0	15686	N.D.	14.024 #
11) L3 AR-1232-1	0.000	3.697	0	15686	N.D.	18.919 #
26) L6 AR-1254-1	6.052	0.000	109298	0	68.497	N.D. #
32) L7 AR-1260-2	0.000	6.098	0	7096	N.D.	2.266 #
38) L8 AR-1262-3	0.000	7.247	0	16670	N.D.	6.897 #
39) L8 AR-1262-4	0.000	7.247	0	16670	N.D.	3.760 #
41) L9 AR-1268-1	0.000	7.247	0	16670	N.D.	2.314 #
42) L9 AR-1268-2	0.000	7.247	0	16670	N.D.	2.504 #
43) L9 AR-1268-3	0.000	7.513	0	20950	N.D.	3.783 #
45) L9 AR-1268-5	0.000	8.067	0	24241	N.D.	1.380 #

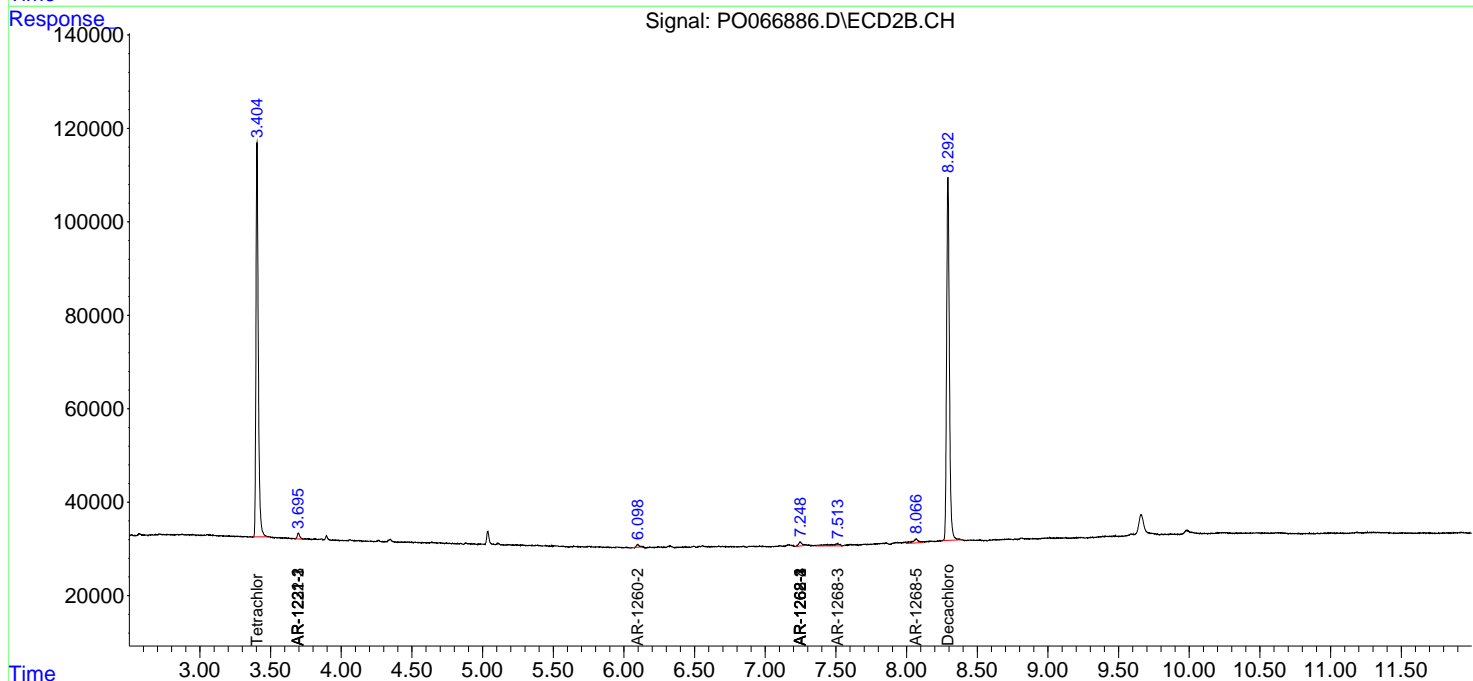
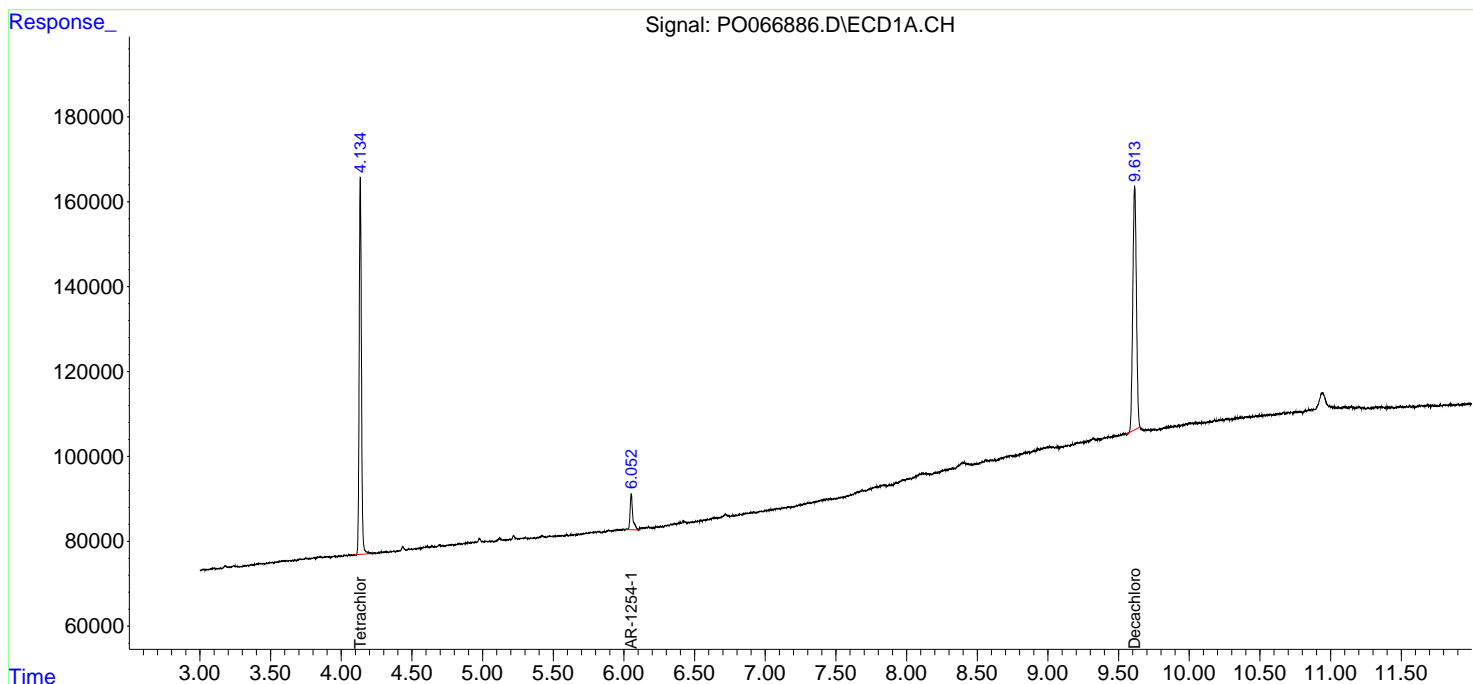
(f)=RT Delta > 1/2 Window (#)=Amounts differ by > 25% (m)=manual int.

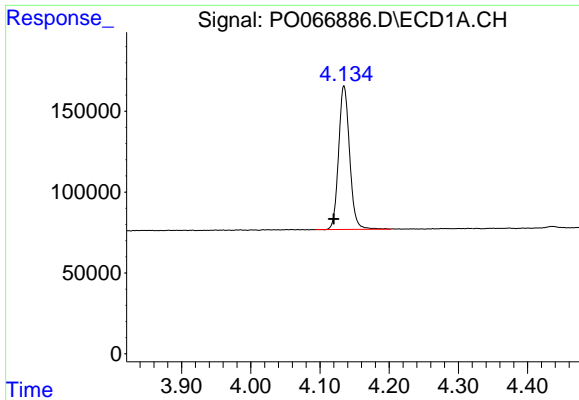
Data Path : Z:\pestpcbsrv\HPCHEM1\ECD_0\Data\P0030220\
 Data File : P0066886.D
 Signal(s) : Signal #1: ECD1A.CH Signal #2: ECD2B.CH
 Acq On : 02 Mar 2020 12:40
 Operator : DD\AJ
 Sample : L1737-01
 Misc :
 ALS Vial : 14 Sample Multiplier: 1

Instrument :
 ECD_O
ClientSampleId :
 FK-BPM-03-013-ABCD

Integration File signal 1: autoint1.e
 Integration File signal 2: autoint2.e
 Quant Time: Mar 02 14:20:00 2020
 Quant Method : Z:\pestpcbsrv\HPCHEM1\ECD_0\methods\P0022620.M
 Quant Title : GC EXTRACTABLES
 QLast Update : Wed Feb 26 14:12:46 2020
 Response via : Initial Calibration
 Integrator: ChemStation 6890 Scale Mode: Small noise peaks clipped

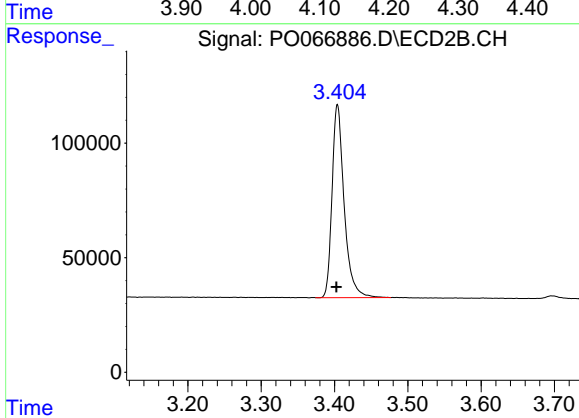
Volume Inj. : 2 µl
 Signal #1 Phase : ZB-MR1 Signal #2 Phase: ZB-MR2
 Signal #1 Info : 30Mx0.32mmx 0.50µ Signal #2 Info : 30M x 0.32mm x 0.25µm



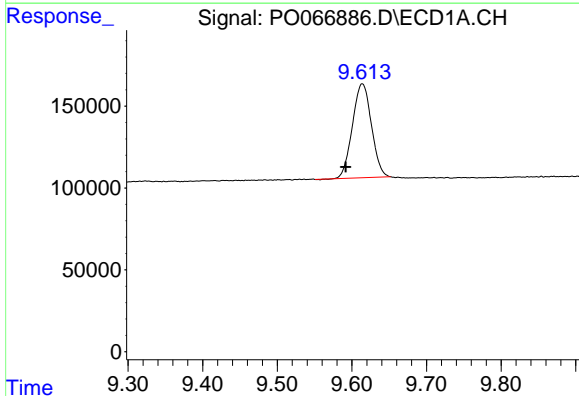


#1 Tetrachloro-m-xylene
 R.T.: 4.135 min
 Delta R.T.: 0.015 min
 Response: 978921
 Conc: 24.01 ng/ml

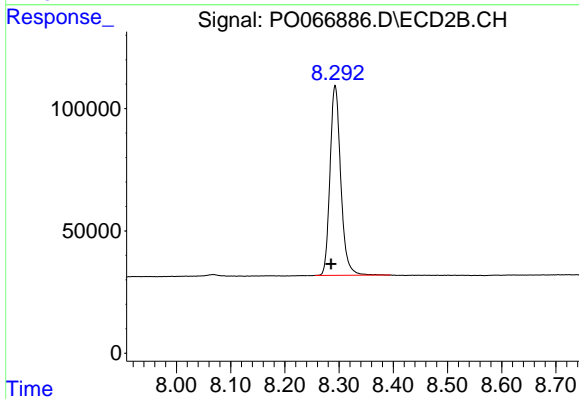
Instrument :
 ECD_O
 ClientSampleId :
 FK-BPM-03-013-ABCD



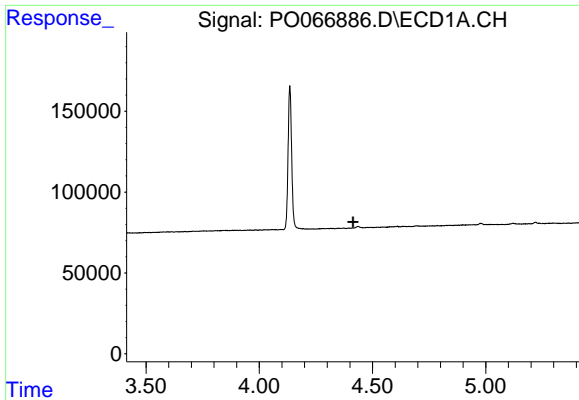
#1 Tetrachloro-m-xylene
 R.T.: 3.404 min
 Delta R.T.: 0.001 min
 Response: 967390
 Conc: 21.91 ng/ml



#2 Decachlorobiphenyl
 R.T.: 9.614 min
 Delta R.T.: 0.022 min
 Response: 1015571
 Conc: 20.82 ng/ml



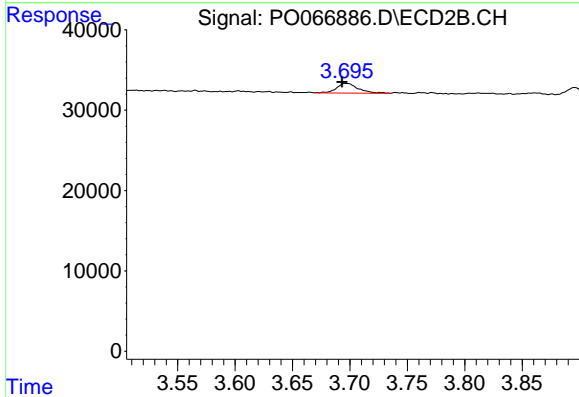
#2 Decachlorobiphenyl
 R.T.: 8.293 min
 Delta R.T.: 0.008 min
 Response: 1068421
 Conc: 21.24 ng/ml



#9 AR-1221-2

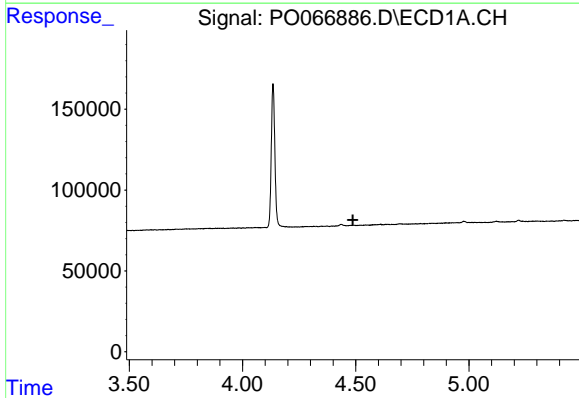
R.T.: 0.000 min
 Exp R.T. : 4.414 min
 Response: 0
 Conc: N.D.

Instrument :
 ECD_O
 ClientSampleId :
 FK-BPM-03-013-ABCD



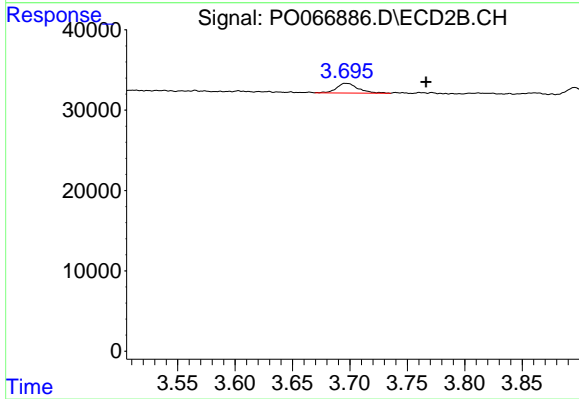
#9 AR-1221-2

R.T.: 3.697 min
 Delta R.T.: 0.004 min
 Response: 15686
 Conc: 45.42 ng/ml



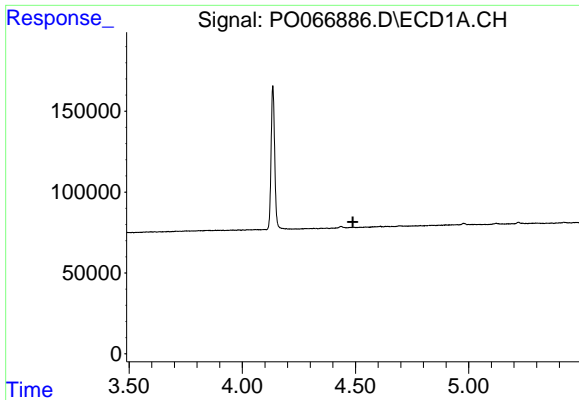
#10 AR-1221-3

R.T.: 0.000 min
 Exp R.T. : 4.488 min
 Response: 0
 Conc: N.D.



#10 AR-1221-3

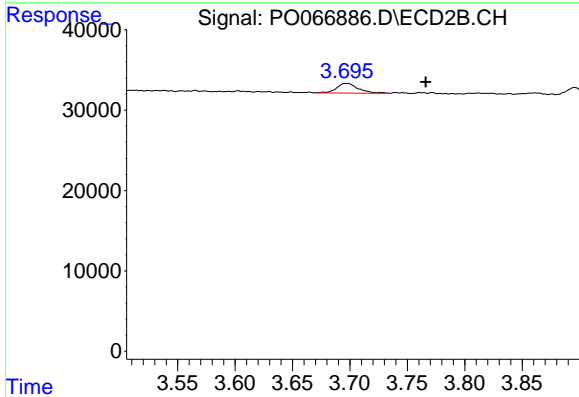
R.T.: 3.697 min
 Delta R.T.: -0.070 min
 Response: 15686
 Conc: 14.02 ng/ml



#11 AR-1232-1

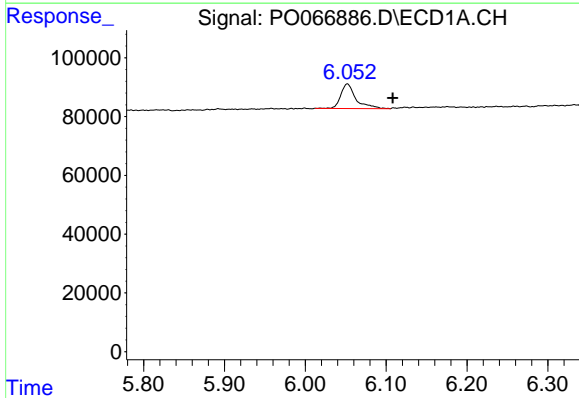
R.T.: 0.000 min
 Exp R.T.: 4.488 min
 Response: 0
 Conc: N.D.

Instrument :
 ECD_O
ClientSampleId :
 FK-BPM-03-013-ABCD



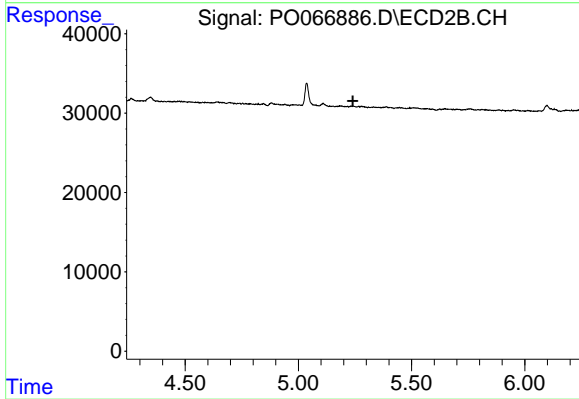
#11 AR-1232-1

R.T.: 3.697 min
 Delta R.T.: -0.070 min
 Response: 15686
 Conc: 18.92 ng/ml



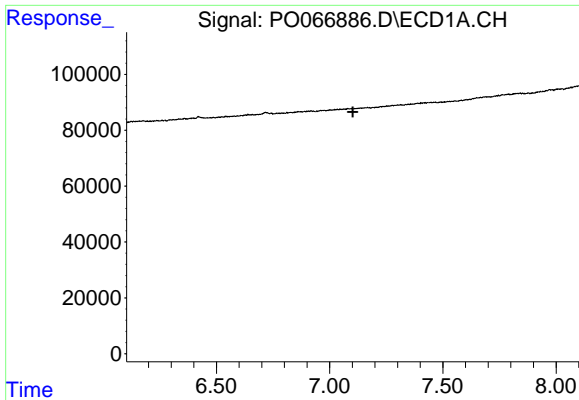
#26 AR-1254-1

R.T.: 6.052 min
 Delta R.T.: -0.056 min
 Response: 109298
 Conc: 68.50 ng/ml



#26 AR-1254-1

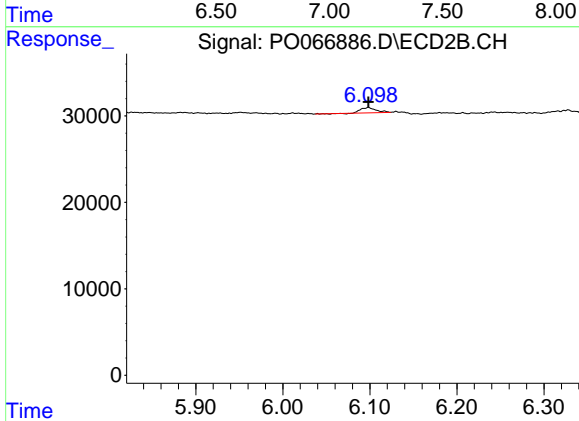
R.T.: 0.000 min
 Exp R.T.: 5.241 min
 Response: 0
 Conc: N.D.



#32 AR-1260-2

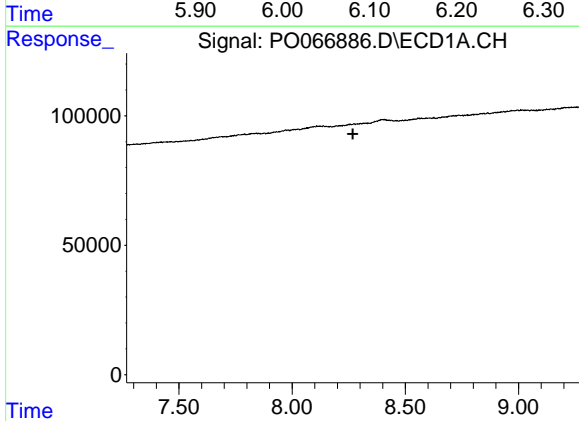
R.T.: 0.000 min
 Exp R.T. : 7.102 min
 Response: 0
 Conc: N.D.

Instrument :
 ECD_O
ClientSampleId :
 FK-BPM-03-013-ABCD



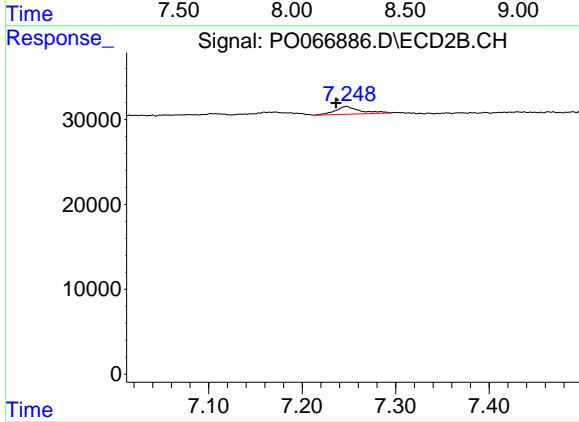
#32 AR-1260-2

R.T.: 6.098 min
 Delta R.T.: 0.000 min
 Response: 7096
 Conc: 2.27 ng/ml



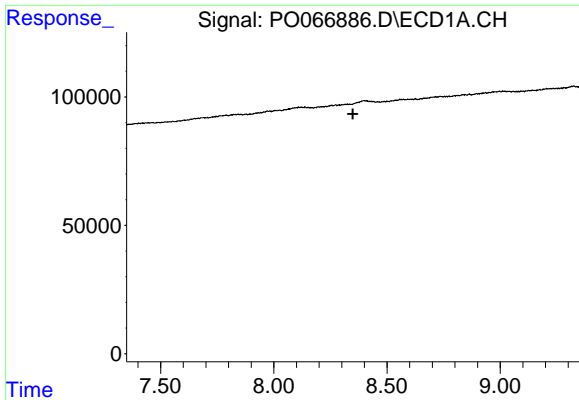
#38 AR-1262-3

R.T.: 0.000 min
 Exp R.T. : 8.268 min
 Response: 0
 Conc: N.D.



#38 AR-1262-3

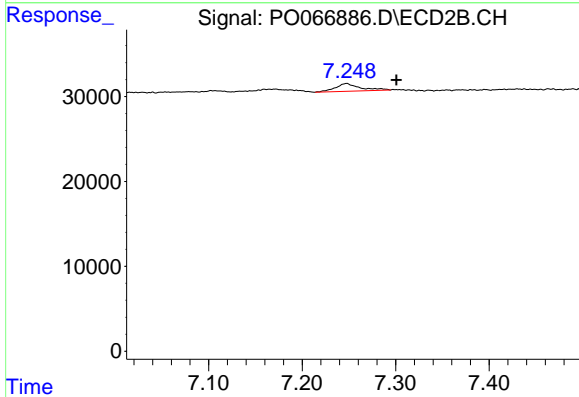
R.T.: 7.247 min
 Delta R.T.: 0.011 min
 Response: 16670
 Conc: 6.90 ng/ml



#39 AR-1262-4

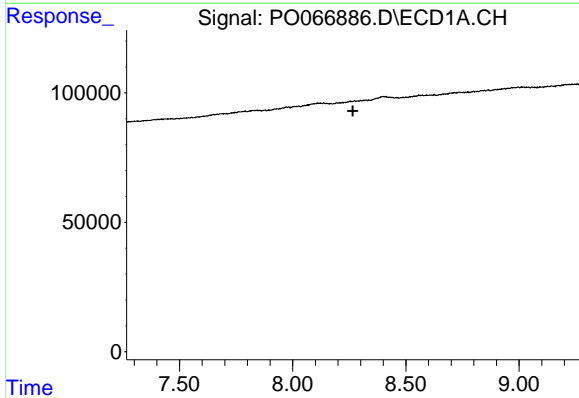
R.T.: 0.000 min
 Exp R.T.: 8.349 min
 Response: 0
 Conc: N.D.

Instrument :
 ECD_O
 ClientSampleId :
 FK-BPM-03-013-ABCD



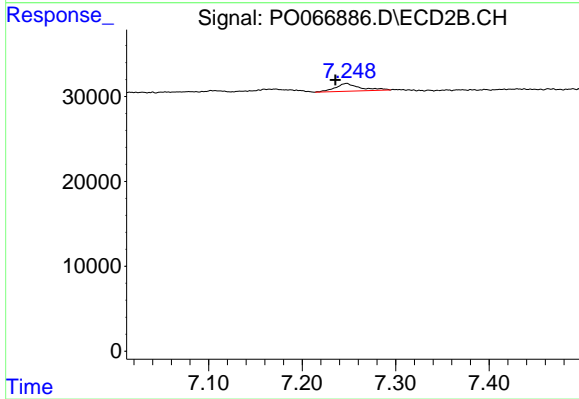
#39 AR-1262-4

R.T.: 7.247 min
 Delta R.T.: -0.053 min
 Response: 16670
 Conc: 3.76 ng/ml



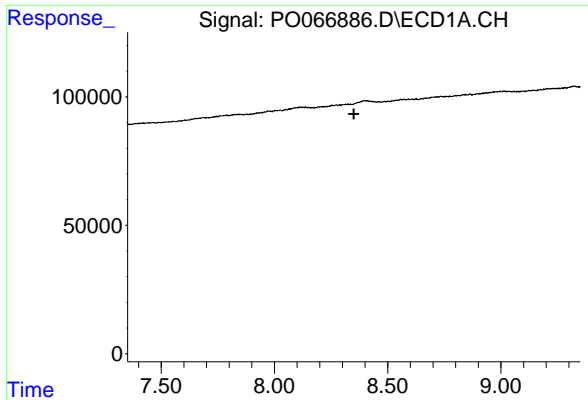
#41 AR-1268-1

R.T.: 0.000 min
 Exp R.T.: 8.266 min
 Response: 0
 Conc: N.D.



#41 AR-1268-1

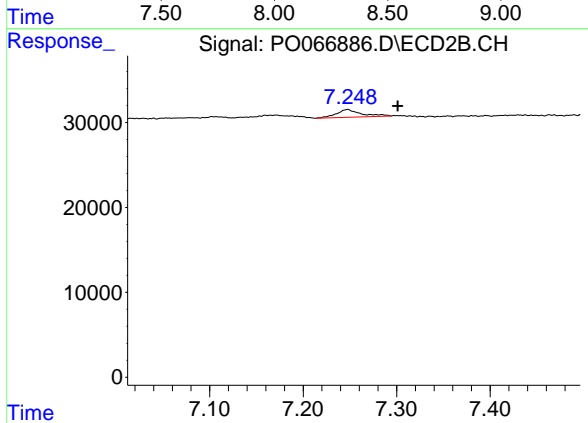
R.T.: 7.247 min
 Delta R.T.: 0.012 min
 Response: 16670
 Conc: 2.31 ng/ml



#42 AR-1268-2

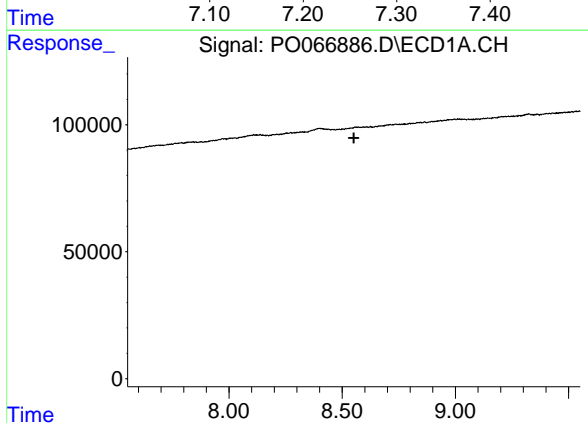
R.T.: 0.000 min
 Exp R.T. : 8.351 min
 Response: 0
 Conc: N.D.

Instrument :
 ECD_O
 ClientSampleId :
 FK-BPM-03-013-ABCD



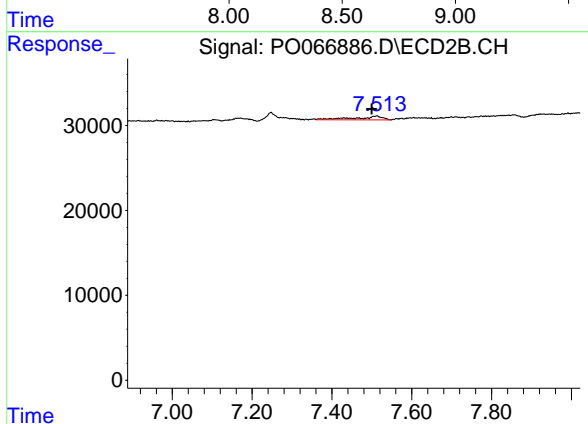
#42 AR-1268-2

R.T.: 7.247 min
 Delta R.T.: -0.054 min
 Response: 16670
 Conc: 2.50 ng/ml



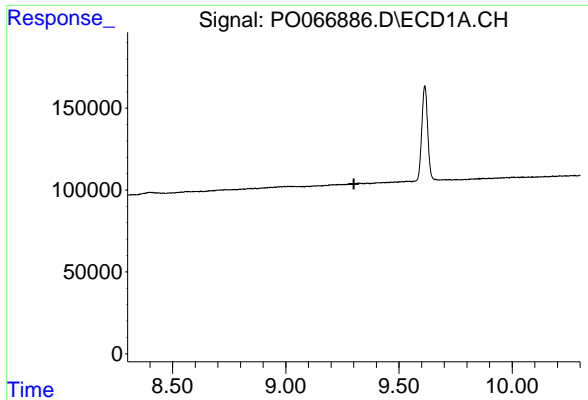
#43 AR-1268-3

R.T.: 0.000 min
 Exp R.T. : 8.552 min
 Response: 0
 Conc: N.D.



#43 AR-1268-3

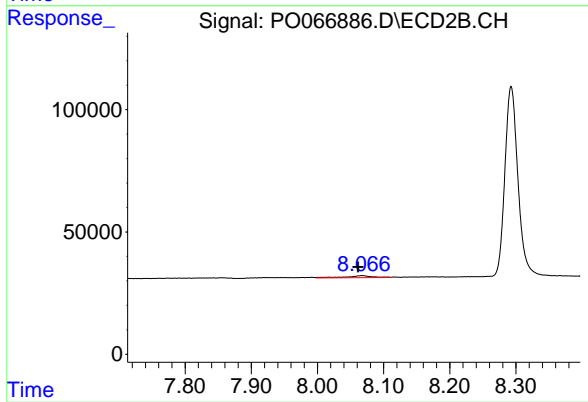
R.T.: 7.513 min
 Delta R.T.: 0.013 min
 Response: 20950
 Conc: 3.78 ng/ml



#45 AR-1268-5

R.T.: 0.000 min
Exp R.T.: 9.301 min
Response: 0
Conc: N.D.

Instrument :
ECD_O
ClientSampleId :
FK-BPM-03-013-ABCD



#45 AR-1268-5

R.T.: 8.067 min
Delta R.T.: 0.006 min
Response: 24241
Conc: 1.38 ng/ml