

Data Path : Z:\pestpcbsrv\HPCHEM1\ECD_0\Data\P0030420\
 Data File : P0066918.D
 Signal(s) : Signal #1: ECD1A.CH Signal #2: ECD2B.CH
 Acq On : 04 Mar 2020 10:18
 Operator : DD\AJ
 Sample : AR1232ICC500
 Misc :
 ALS Vial : 9 Sample Multiplier: 1

Instrument :
 ECD_0
 ClientSampleId :
 AR1232ICC500

Integration File signal 1: autoint1.e
 Integration File signal 2: autoint2.e
 Quant Time: Mar 04 12:46:13 2020
 Quant Method : Z:\pestpcbsrv\HPCHEM1\ECD_0\methods\P0030420.M
 Quant Title : GC EXTRACTABLES
 QLast Update : Wed Mar 04 12:45:53 2020
 Response via : Initial Calibration
 Integrator: ChemStation 6890 Scale Mode: Small noise peaks clipped

Volume Inj. : 2 µl
 Signal #1 Phase : ZB-MR1 Signal #2 Phase: ZB-MR2
 Signal #1 Info : 30Mx0.32mmx 0.50µ Signal #2 Info : 30M x 0.32mm x 0.25µm

Compound	RT#1	RT#2	Resp#1	Resp#2	ng/ml	ng/ml

System Monitoring Compounds						
1) SA Tetrachlo...	4.118	3.401	2302801	2041554	50.000	50.000
2) SA Decachlor...	9.588	8.283	2421109	2240001	50.000	50.000
Target Compounds						
11) L3 AR-1232-1	4.486	3.765	466157	402120	500.000	500.000
12) L3 AR-1232-2	5.002	4.471	250210	487925	500.000	500.000
13) L3 AR-1232-3	5.287	4.644	521494	211191	500.000	500.000
14) L3 AR-1232-4	5.445	4.726	239322	189400	500.000	500.000
15) L3 AR-1232-5	5.534	4.894	172205	218001	500.000	500.000

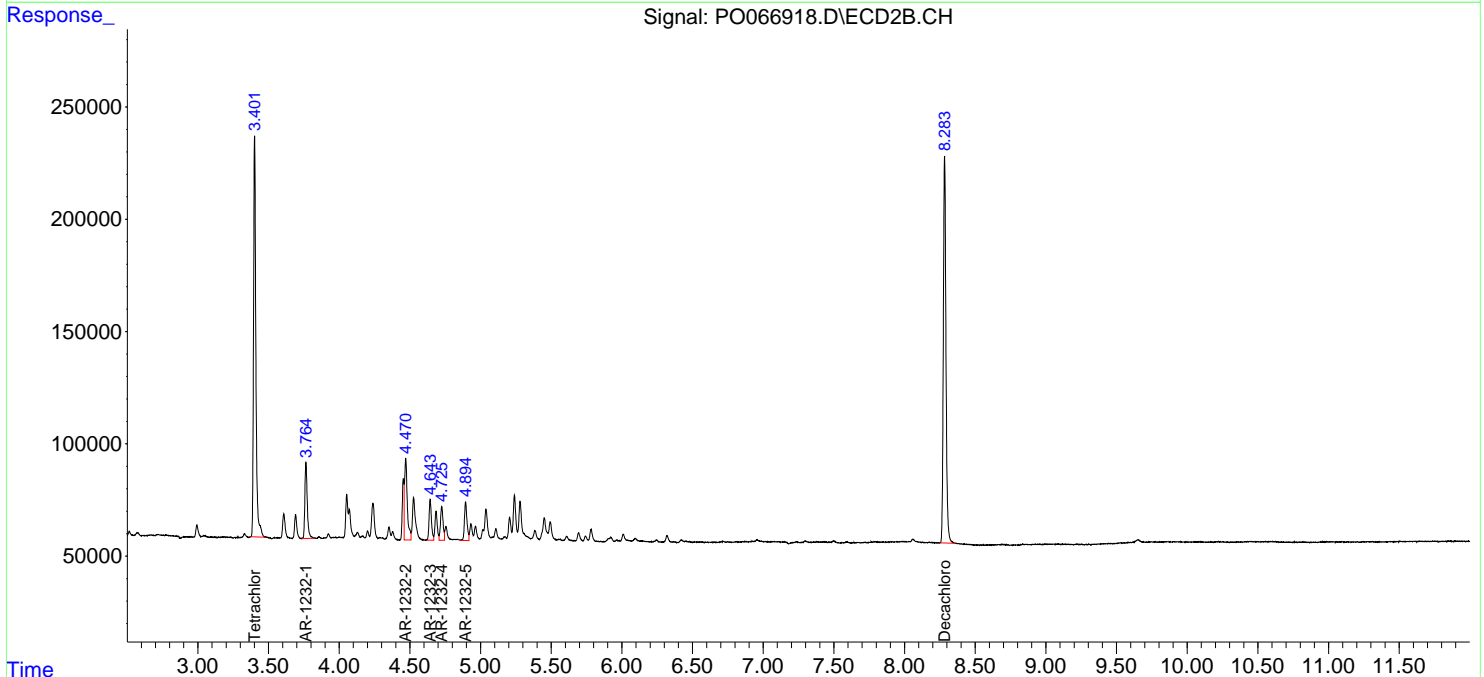
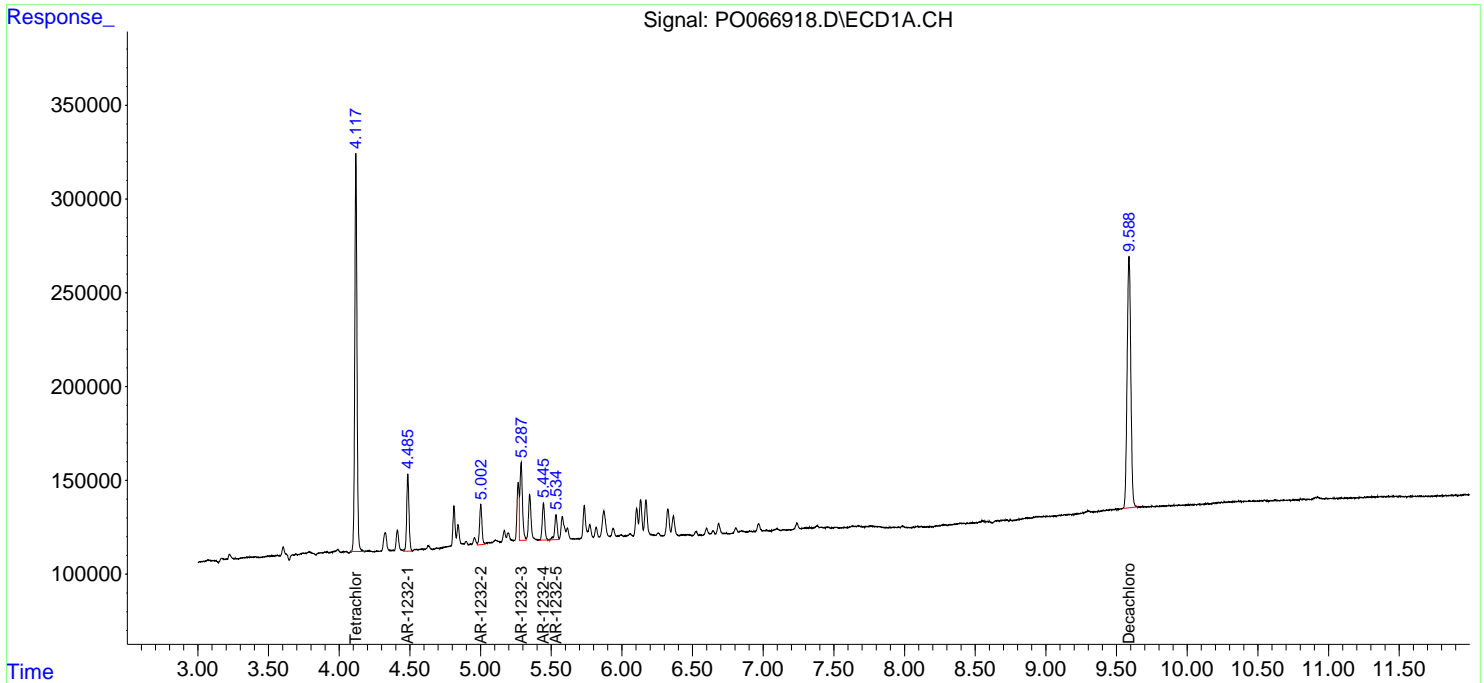
(f)=RT Delta > 1/2 Window (#)=Amounts differ by > 25% (m)=manual int.

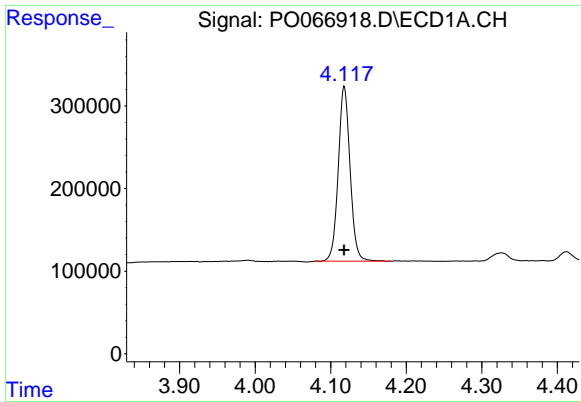
Data Path : Z:\pestpcbsrv\HPCHEM1\ECD_O\Data\P0030420\
 Data File : P0066918.D
 Signal(s) : Signal #1: ECD1A.CH Signal #2: ECD2B.CH
 Acq On : 04 Mar 2020 10:18
 Operator : DD\AJ
 Sample : AR1232ICC500
 Misc :
 ALS Vial : 9 Sample Multiplier: 1

Instrument :
 ECD_O
 ClientSampleId :
 AR1232ICC500

Integration File signal 1: autoint1.e
 Integration File signal 2: autoint2.e
 Quant Time: Mar 04 12:46:13 2020
 Quant Method : Z:\pestpcbsrv\HPCHEM1\ECD_O\methods\P0030420.M
 Quant Title : GC EXTRACTABLES
 QLast Update : Wed Mar 04 12:45:53 2020
 Response via : Initial Calibration
 Integrator: ChemStation 6890 Scale Mode: Small noise peaks clipped

Volume Inj. : 2 µl
 Signal #1 Phase : ZB-MR1 Signal #2 Phase: ZB-MR2
 Signal #1 Info : 30Mx0.32mmx 0.50µ Signal #2 Info : 30M x 0.32mm x 0.25µm

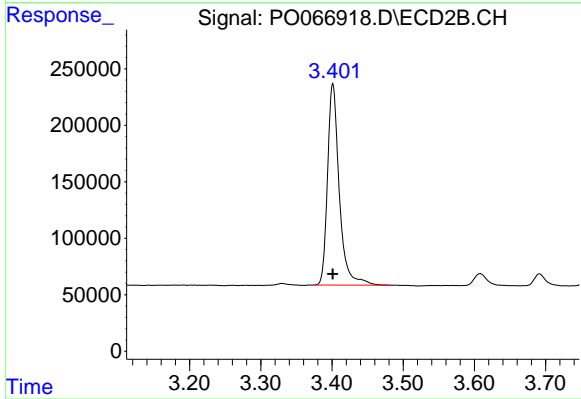




#1 Tetrachloro-m-xylene

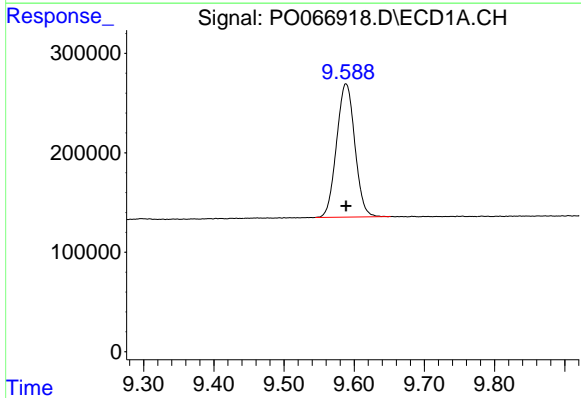
R.T.: 4.118 min
Delta R.T.: 0.000 min
Response: 2302801
Conc: 50.00 ng/ml

Instrument :
ECD_O
ClientSampleId :
AR1232ICC500



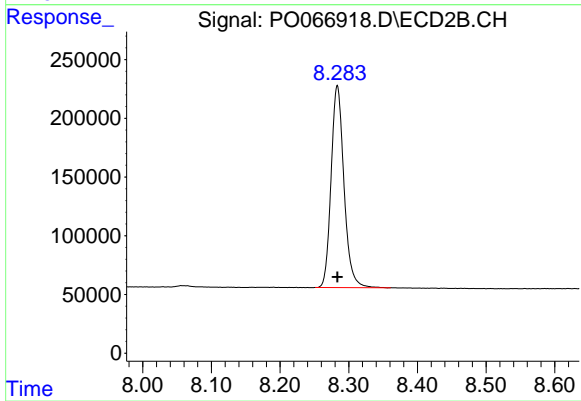
#1 Tetrachloro-m-xylene

R.T.: 3.401 min
Delta R.T.: 0.000 min
Response: 2041554
Conc: 50.00 ng/ml



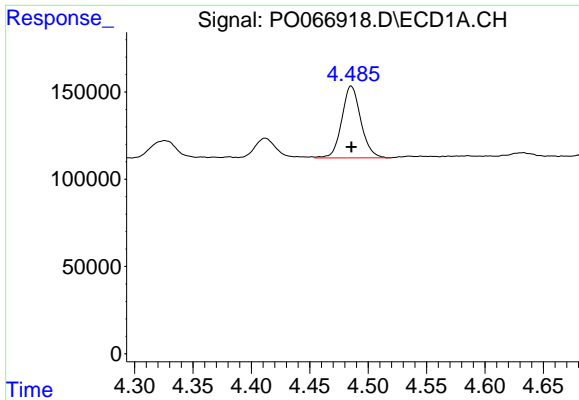
#2 Decachlorobiphenyl

R.T.: 9.588 min
Delta R.T.: 0.000 min
Response: 2421109
Conc: 50.00 ng/ml



#2 Decachlorobiphenyl

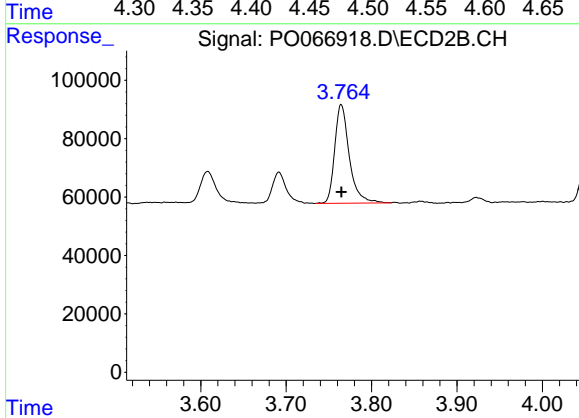
R.T.: 8.283 min
Delta R.T.: 0.000 min
Response: 2240001
Conc: 50.00 ng/ml



#11 AR-1232-1

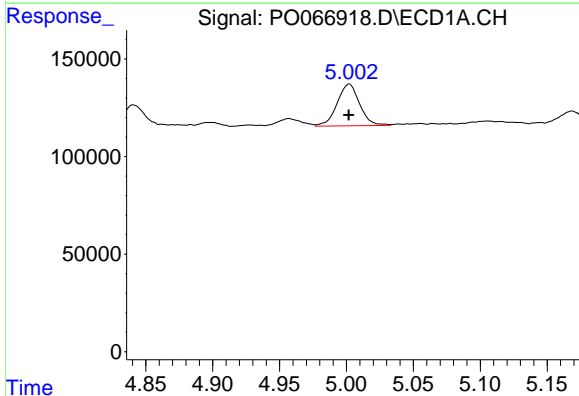
R.T.: 4.486 min
 Delta R.T.: 0.000 min
 Response: 466157
 Conc: 500.00 ng/ml

Instrument :
 ECD_O
 ClientSampleId :
 AR1232ICC500



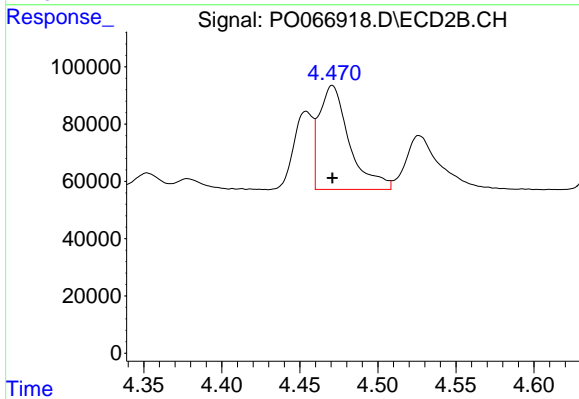
#11 AR-1232-1

R.T.: 3.765 min
 Delta R.T.: 0.000 min
 Response: 402120
 Conc: 500.00 ng/ml



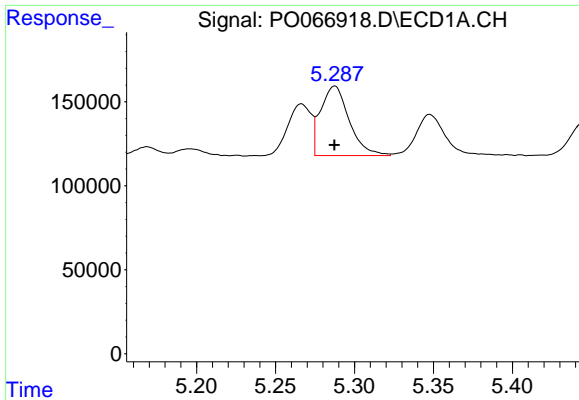
#12 AR-1232-2

R.T.: 5.002 min
 Delta R.T.: 0.000 min
 Response: 250210
 Conc: 500.00 ng/ml



#12 AR-1232-2

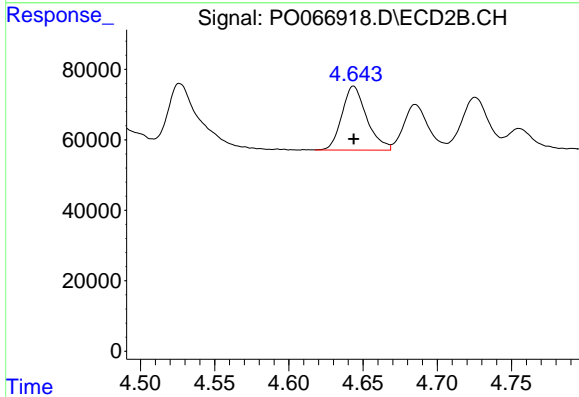
R.T.: 4.471 min
 Delta R.T.: 0.000 min
 Response: 487925
 Conc: 500.00 ng/ml



#13 AR-1232-3

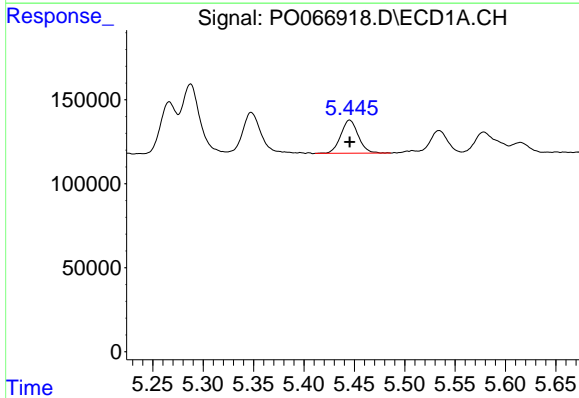
R.T.: 5.287 min
 Delta R.T.: 0.000 min
 Response: 521494
 Conc: 500.00 ng/ml

Instrument :
 ECD_O
 ClientSampled :
 AR1232ICC500



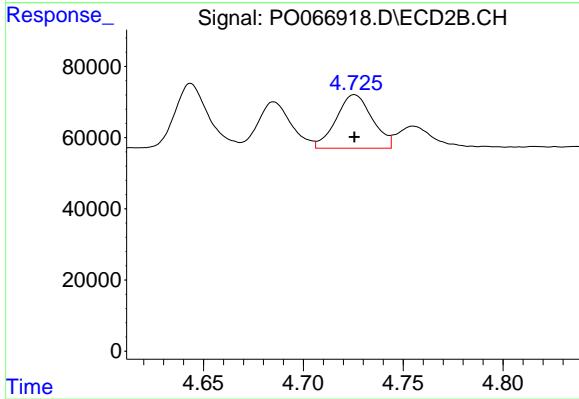
#13 AR-1232-3

R.T.: 4.644 min
 Delta R.T.: 0.000 min
 Response: 211191
 Conc: 500.00 ng/ml



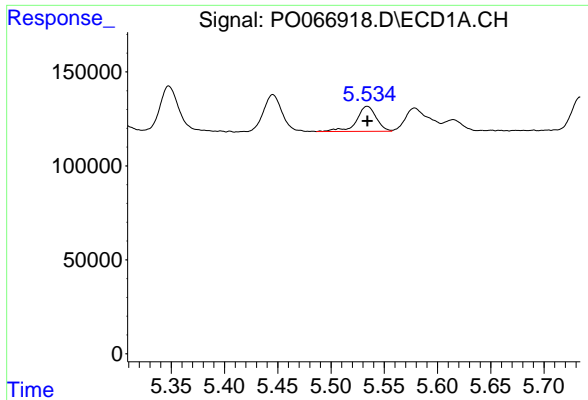
#14 AR-1232-4

R.T.: 5.445 min
 Delta R.T.: 0.000 min
 Response: 239322
 Conc: 500.00 ng/ml



#14 AR-1232-4

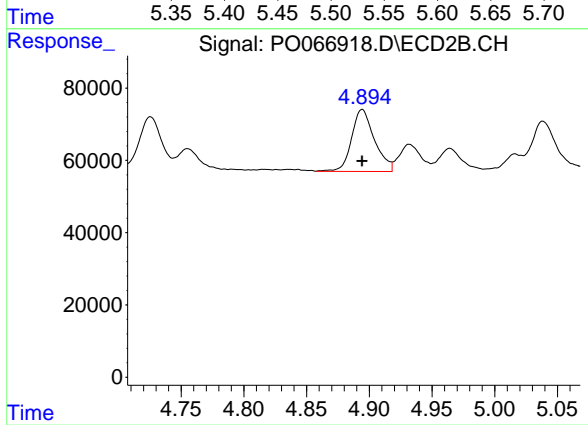
R.T.: 4.726 min
 Delta R.T.: 0.000 min
 Response: 189400
 Conc: 500.00 ng/ml



#15 AR-1232-5

R.T.: 5.534 min
 Delta R.T.: 0.000 min
 Response: 172205
 Conc: 500.00 ng/ml

Instrument :
 ECD_O
ClientSampled :
 AR1232ICC500



#15 AR-1232-5

R.T.: 4.894 min
 Delta R.T.: 0.000 min
 Response: 218001
 Conc: 500.00 ng/ml