

Data Path : Z:\pestpcbsrv\HPCHEM1\ECD_0\Data\P0030519\
 Data File : P0054230.D
 Signal(s) : Signal #1: ECD1A.CH Signal #2: ECD2B.CH
 Acq On : 05 Mar 2019 17:17
 Operator : SM/SJ
 Sample : K1706-02 10X
 Misc :
 ALS Vial : 10 Sample Multiplier: 1

Instrument :
 ECD_0
 ClientSampleId :
 DRUM-3-4-5

Integration File signal 1: autoint1.e
 Integration File signal 2: autoint2.e
 Quant Time: Mar 05 23:42:00 2019
 Quant Method : Z:\pestpcbsrv\HPCHEM1\ECD_0\methods\P0030419.M
 Quant Title : GC EXTRACTABLES
 QLast Update : Tue Mar 05 06:51:55 2019
 Response via : Initial Calibration
 Integrator: ChemStation 6890 Scale Mode: Small noise peaks clipped

Volume Inj. : 2 µl
 Signal #1 Phase : ZB-MR1 Signal #2 Phase: ZB-MR2
 Signal #1 Info : 30Mx0.32mmx 0.50µ Signal #2 Info : 30M x 0.32mm x 0.25µm

Compound	RT#1	RT#2	Resp#1	Resp#2	ng/ml	ng/ml

System Monitoring Compounds						
1) SA Tetrachlo...	4.034	3.122	2241661	373525	0.403	1.189 #
2) SA Decachlor...	9.357	7.688	2861871	705760	1.928	2.207

Target Compounds

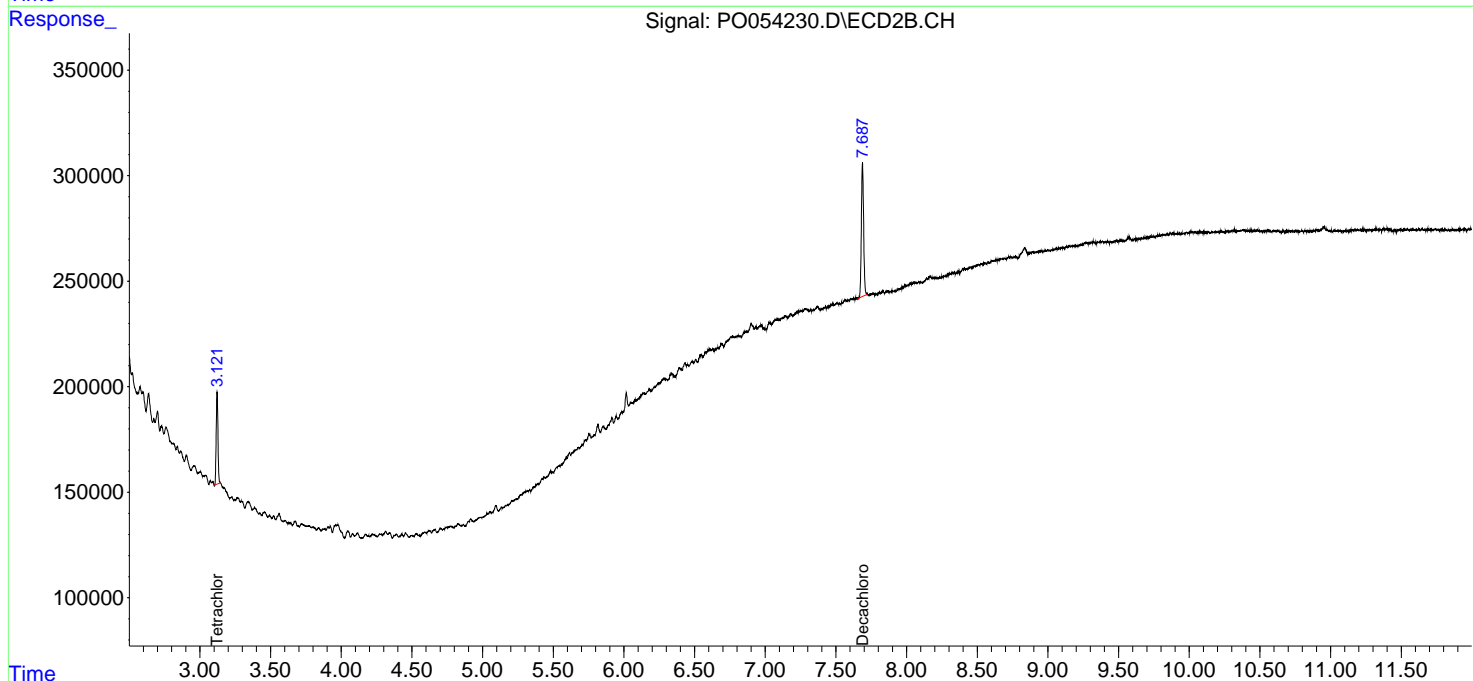
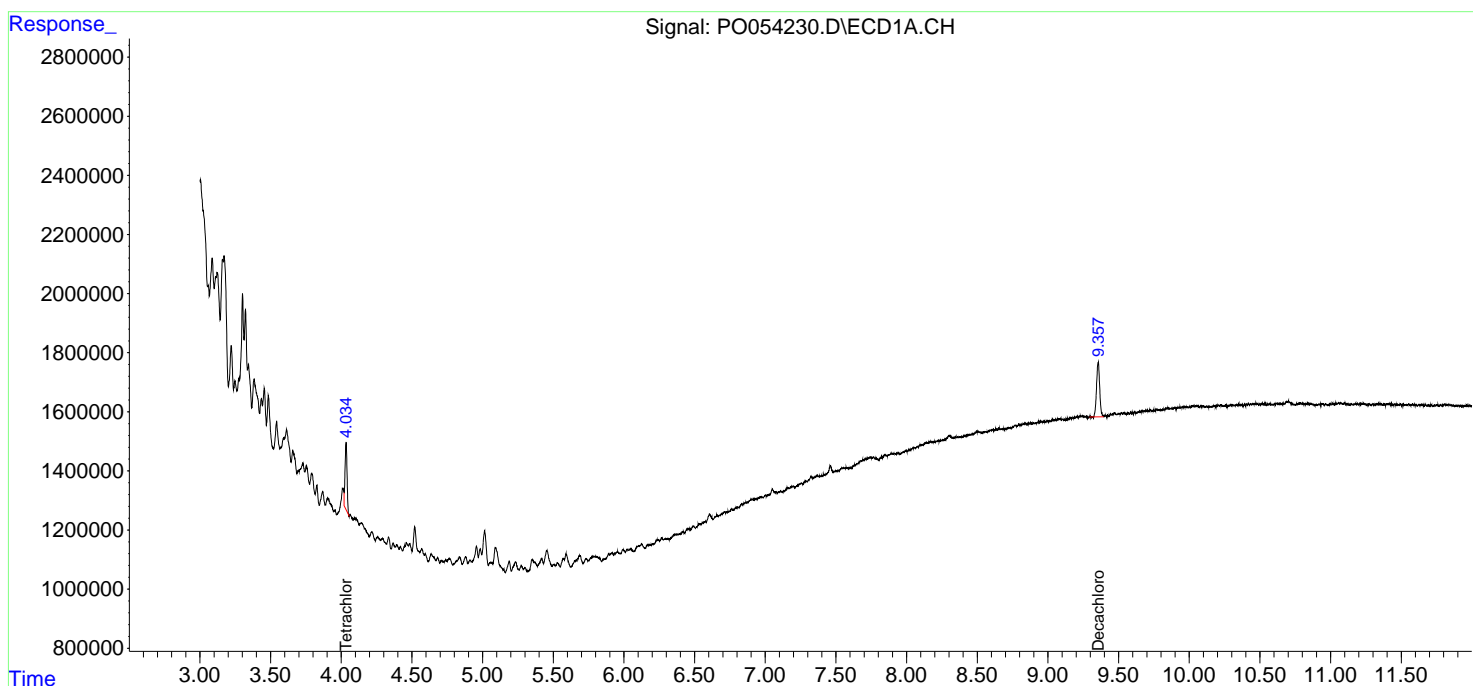
(f)=RT Delta > 1/2 Window (#)=Amounts differ by > 25% (m)=manual int.

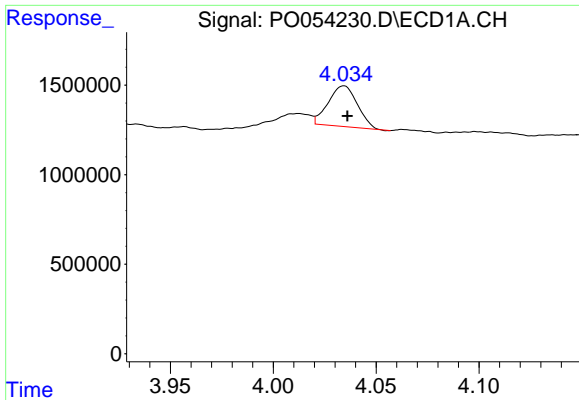
Data Path : Z:\pestpcbsrv\HPCHEM1\ECD_0\Data\P0030519\
 Data File : P0054230.D
 Signal(s) : Signal #1: ECD1A.CH Signal #2: ECD2B.CH
 Acq On : 05 Mar 2019 17:17
 Operator : SM/SJ
 Sample : K1706-02 10X
 Misc :
 ALS Vial : 10 Sample Multiplier: 1

Instrument :
 ECD_0
 ClientSampled :
 DRUM-3-4-5

Integration File signal 1: autoint1.e
 Integration File signal 2: autoint2.e
 Quant Time: Mar 05 23:42:00 2019
 Quant Method : Z:\pestpcbsrv\HPCHEM1\ECD_0\methods\P0030419.M
 Quant Title : GC EXTRACTABLES
 QLast Update : Tue Mar 05 06:51:55 2019
 Response via : Initial Calibration
 Integrator: ChemStation 6890 Scale Mode: Small noise peaks clipped

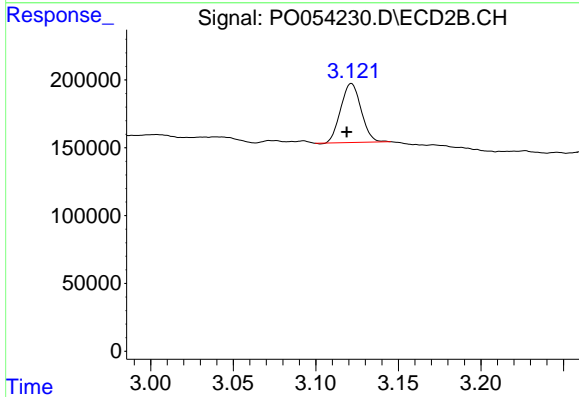
Volume Inj. : 2 µl
 Signal #1 Phase : ZB-MR1 Signal #2 Phase: ZB-MR2
 Signal #1 Info : 30Mx0.32mmx 0.50µm Signal #2 Info : 30M x 0.32mm x 0.25µm



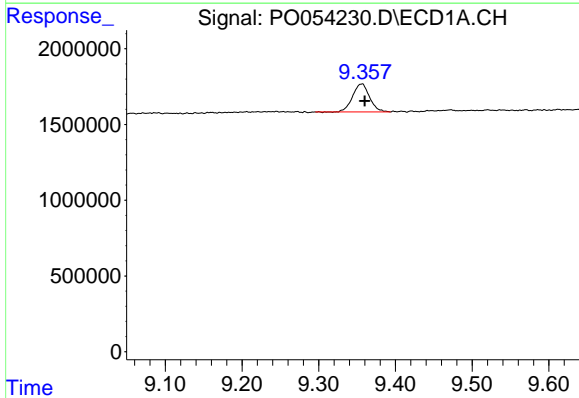


#1 Tetrachloro-m-xylene
 R.T.: 4.034 min
 Delta R.T.: -0.002 min
 Response: 2241661
 Conc: 0.40 ng/ml

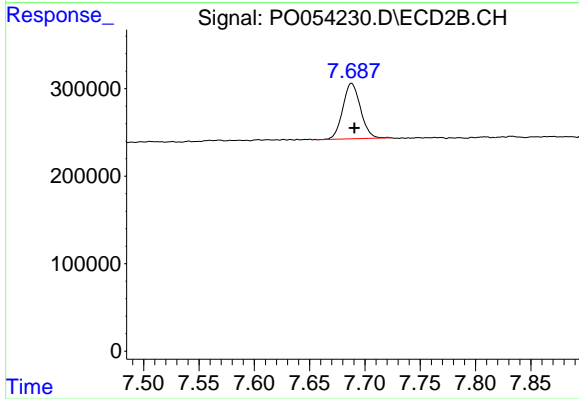
Instrument :
 ECD_O
 ClientSampleId :
 DRUM-3-4-5



#1 Tetrachloro-m-xylene
 R.T.: 3.122 min
 Delta R.T.: 0.003 min
 Response: 373525
 Conc: 1.19 ng/ml



#2 Decachlorobiphenyl
 R.T.: 9.357 min
 Delta R.T.: -0.003 min
 Response: 2861871
 Conc: 1.93 ng/ml



#2 Decachlorobiphenyl
 R.T.: 7.688 min
 Delta R.T.: -0.003 min
 Response: 705760
 Conc: 2.21 ng/ml