

Data Path : Z:\pestpcbsrv\HPCHEM1\ECD_0\Data\P0030519\
 Data File : P0054224.D
 Signal(s) : Signal #1: ECD1A.CH Signal #2: ECD2B.CH
 Acq On : 05 Mar 2019 10:21
 Operator : SM/SJ
 Sample : AR1660CCC500
 Misc :
 ALS Vial : 3 Sample Multiplier: 1

Instrument :
 ECD_0
 ClientSampleId :
 AR1660CCC500

Manual Integrations
 APPROVED

Sohil
 3/6/2019 2:11:04 PM

Integration File signal 1: autoint1.e
 Integration File signal 2: autoint2.e
 Quant Time: Mar 05 23:39:21 2019
 Quant Method : Z:\pestpcbsrv\HPCHEM1\ECD_0\methods\P0030419.M
 Quant Title : GC EXTRACTABLES
 QLast Update : Tue Mar 05 06:51:55 2019
 Response via : Initial Calibration
 Integrator: ChemStation 6890 Scale Mode: Small noise peaks clipped

Volume Inj. : 2 µl
 Signal #1 Phase : ZB-MR2 Signal #2 Phase: ZB-MR2
 Signal #1 Info : 30Mx0.32mmx 0.50µ Signal #2 Info : 30M x 0.32mm x 0.25µm

Compound	RT#1	RT#2	Resp#1	Resp#2	ng/ml	ng/ml

System Monitoring Compounds						
1) SA Tetrachlo...	4.034	3.118	358.0E6	18717071	64.377	59.574
2) SA Decachlor...	9.355	7.687	76717183	16293075	51.670	50.941
Target Compounds						
3) L1 AR-1016-1	5.165	4.084	68331194	6807214	592.244	558.797
4) L1 AR-1016-2	5.186	4.098	100.7E6	10633811	584.768	556.795
5) L1 AR-1016-3	5.244	4.254	57208505	5542700	564.057	535.693
6) L1 AR-1016-4	5.342	4.296	46771849	4313471	569.058	544.917
7) L1 AR-1016-5	5.623	4.484	41149145	5730521	588.114	547.666m
31) L7 AR-1260-1	6.713	5.427	51946597	10117640	529.455	499.088
32) L7 AR-1260-2	6.965	5.611	60035691	12016813	510.029	492.530
33) L7 AR-1260-3	7.313	5.747	36804419	11290041	508.252	499.176
34) L7 AR-1260-4	7.538	6.188	37790225	7315983	510.269	512.660
35) L7 AR-1260-5	7.842	6.430	80204913	17820063	521.898	512.528

(f)=RT Delta > 1/2 Window (#)=Amounts differ by > 25% (m)=manual int.

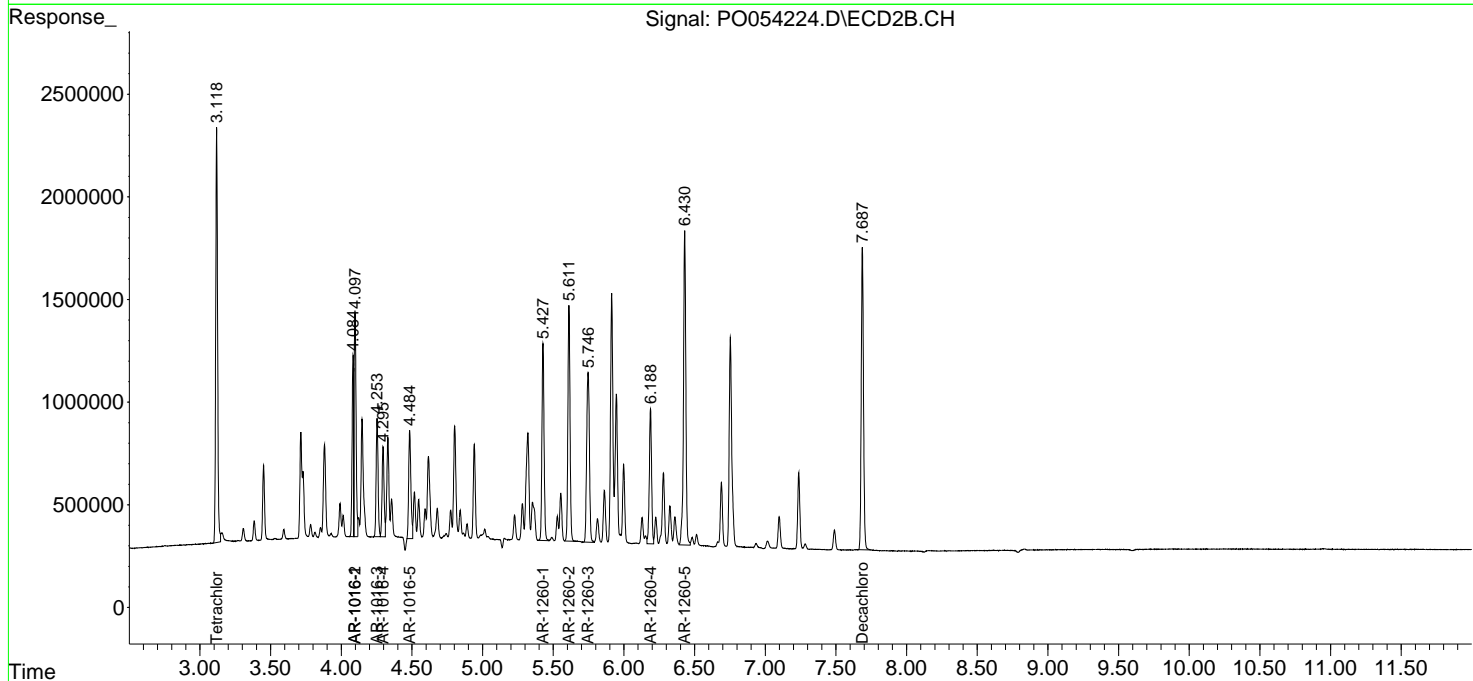
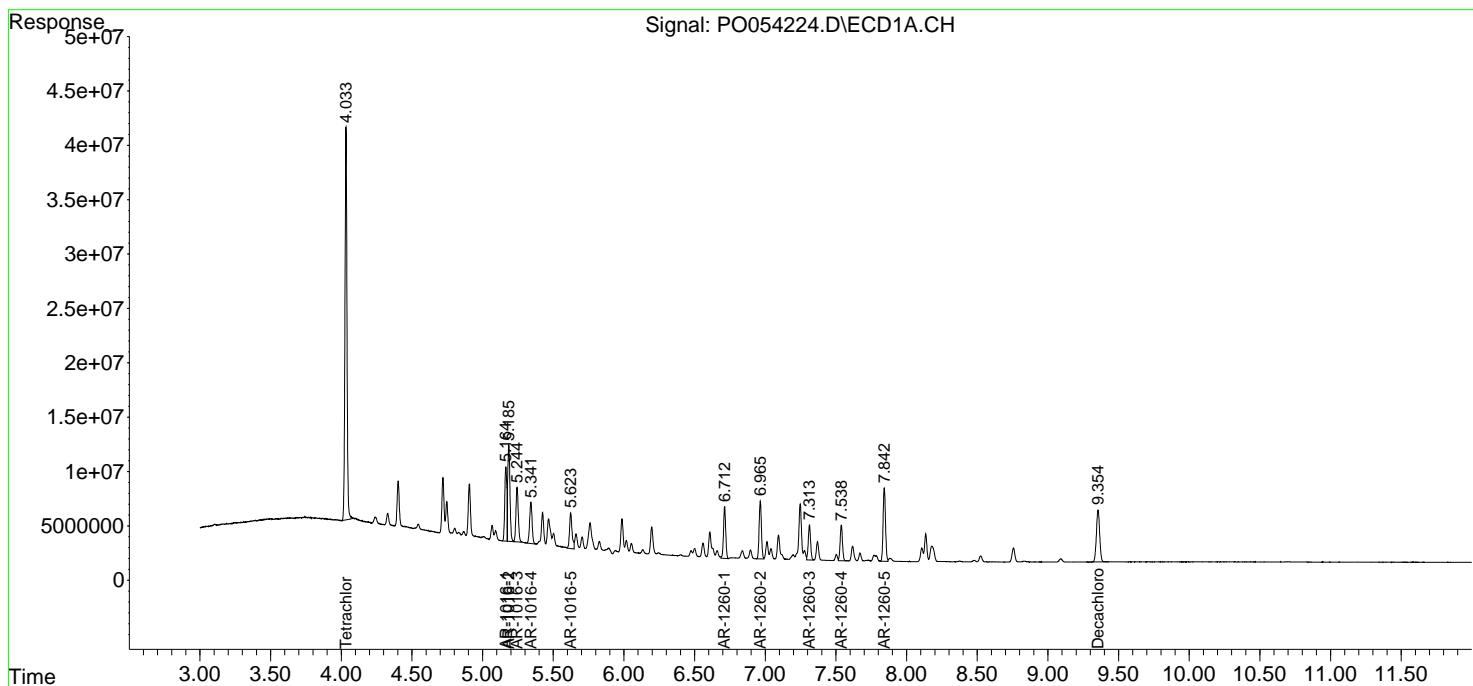
Data Path : Z:\pestpcbsrv\HPCHEM1\ECD_O\Data\PO030519\
 Data File : PO054224.D
 Signal(s) : Signal #1: ECD1A.CH Signal #2: ECD2B.CH
 Acq On : 05 Mar 2019 10:21
 Operator : SM/SJ
 Sample : AR1660CCC500
 Misc :
 ALS Vial : 3 Sample Multiplier: 1

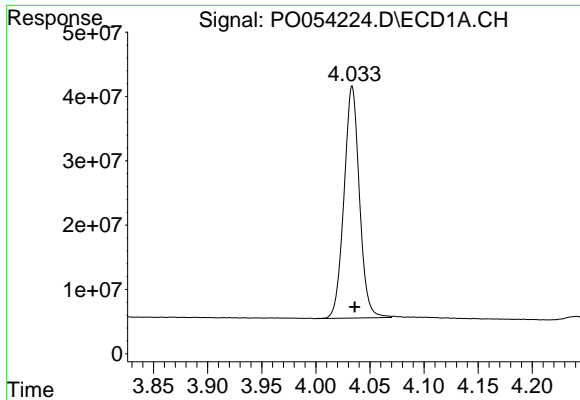
Instrument :
 ECD_O
Client Sampled :
 AR1660CCC500

Manual Integrations
APPROVED
 Sohil
 3/6/2019 2:11:04 PM

Integration File signal 1: autoint1.e
 Integration File signal 2: autoint2.e
 Quant Time: Mar 05 23:39:21 2019
 Quant Method : Z:\pestpcbsrv\HPCHEM1\ECD_O\methods\PO030419.M
 Quant Title : GC EXTRACTABLES
 QLast Update : Tue Mar 05 06:51:55 2019
 Response via : Initial Calibration
 Integrator: ChemStation 6890 Scale Mode: Small noise peaks clipped

Volume Inj. : 2 µl
 Signal #1 Phase : ZB-MR1 Signal #2 Phase: ZB-MR2
 Signal #1 Info : 30Mx0.32mmx 0.50µ Signal #2 Info : 30M x 0.32mm x 0.25µm

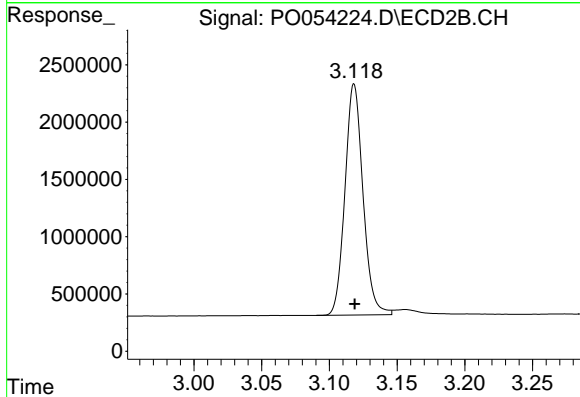




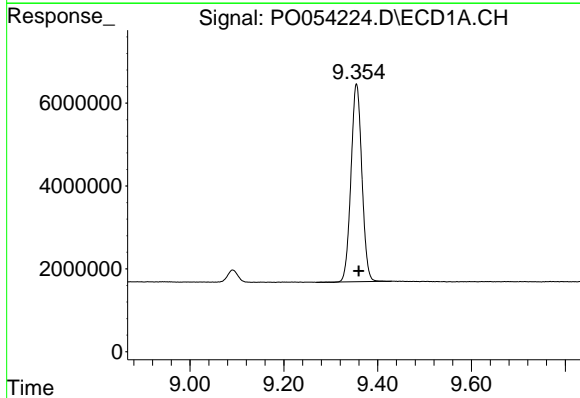
#1 Tetrachloro-m-xylene
 R.T.: 4.034 min
 Delta R.T.: -0.002 min
 Response: 357969106
 Conc: 64.38 ng/ml

Instrument :
 ECD_O
 ClientSampled :
 AR1660CCC500

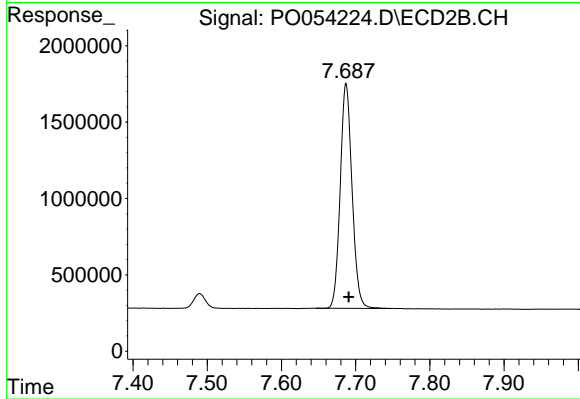
Manual Integrations
 APPROVED
 Sohil
 3/6/2019 2:11:04 PM



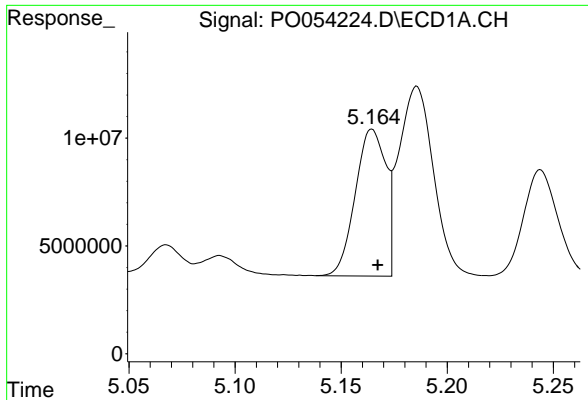
#1 Tetrachloro-m-xylene
 R.T.: 3.118 min
 Delta R.T.: 0.000 min
 Response: 18717071
 Conc: 59.57 ng/ml



#2 Decachlorobiphenyl
 R.T.: 9.355 min
 Delta R.T.: -0.005 min
 Response: 76717183
 Conc: 51.67 ng/ml



#2 Decachlorobiphenyl
 R.T.: 7.687 min
 Delta R.T.: -0.003 min
 Response: 16293075
 Conc: 50.94 ng/ml

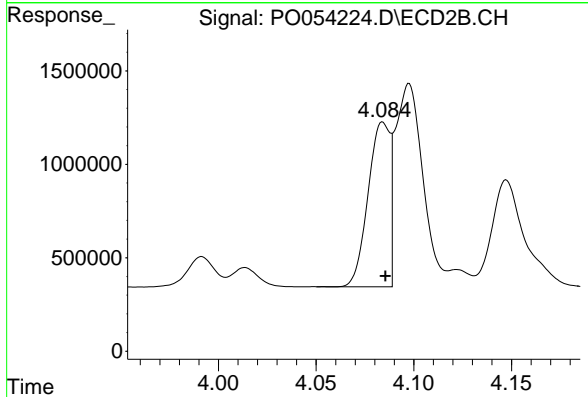


#3 AR-1016-1

R.T.: 5.165 min
 Delta R.T.: -0.003 min
 Response: 68331194
 Conc: 592.24 ng/ml

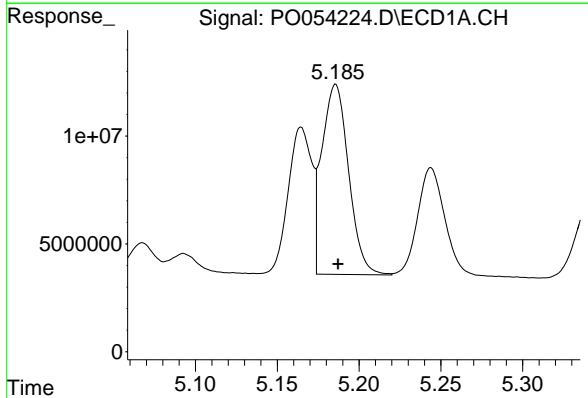
Instrument :
 ECD_O
ClientSampled :
 AR1660CCC500

Manual Integrations
APPROVED
 Sohil
 3/6/2019 2:11:04 PM



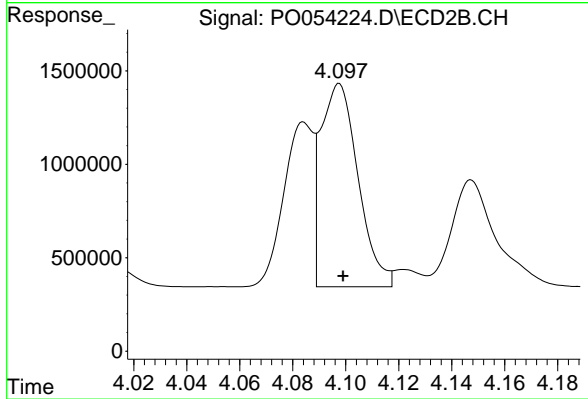
#3 AR-1016-1

R.T.: 4.084 min
 Delta R.T.: -0.001 min
 Response: 6807214
 Conc: 558.80 ng/ml



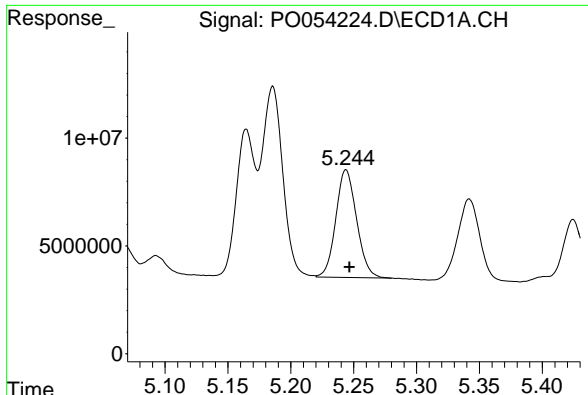
#4 AR-1016-2

R.T.: 5.186 min
 Delta R.T.: -0.001 min
 Response: 100675543
 Conc: 584.77 ng/ml



#4 AR-1016-2

R.T.: 4.098 min
 Delta R.T.: -0.001 min
 Response: 10633811
 Conc: 556.79 ng/ml

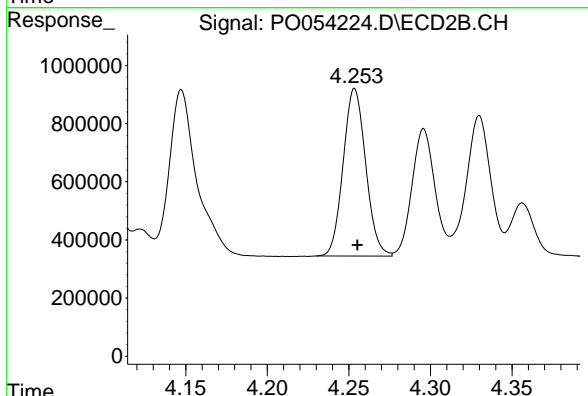


#5 AR-1016-3

R.T.: 5.244 min
 Delta R.T.: -0.003 min
 Response: 57208505
 Conc: 564.06 ng/ml

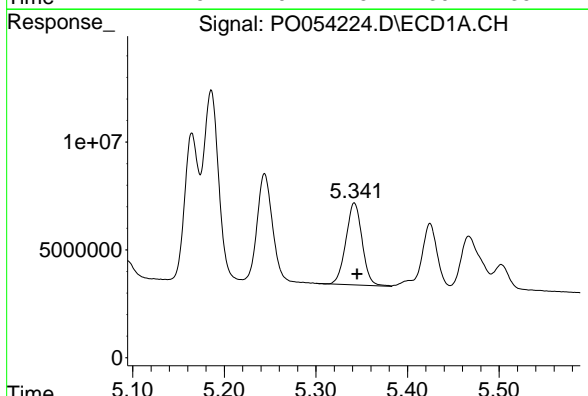
Instrument :
 ECD_O
ClientSampled :
 AR1660CCC500

Manual Integrations
APPROVED
 Sohil
 3/6/2019 2:11:04 PM



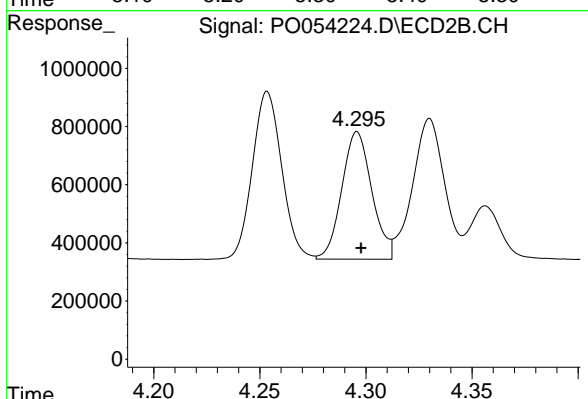
#5 AR-1016-3

R.T.: 4.254 min
 Delta R.T.: -0.002 min
 Response: 5542700
 Conc: 535.69 ng/ml



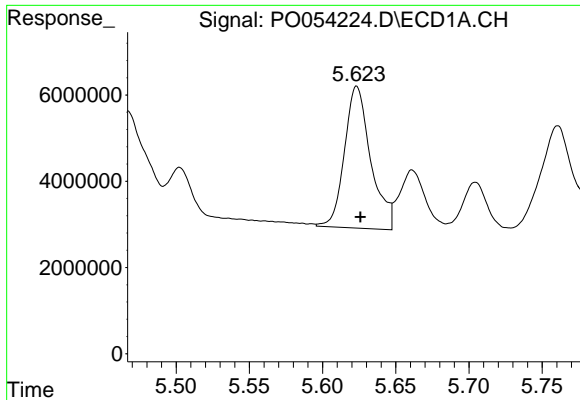
#6 AR-1016-4

R.T.: 5.342 min
 Delta R.T.: -0.003 min
 Response: 46771849
 Conc: 569.06 ng/ml



#6 AR-1016-4

R.T.: 4.296 min
 Delta R.T.: -0.002 min
 Response: 4313471
 Conc: 544.92 ng/ml

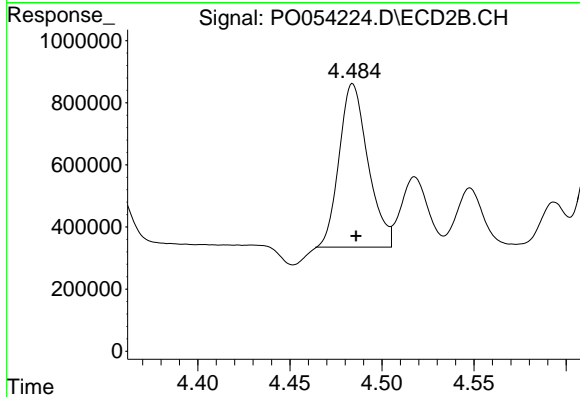


#7 AR-1016-5

R.T.: 5.623 min
 Delta R.T.: -0.003 min
 Response: 41149145
 Conc: 588.11 ng/ml

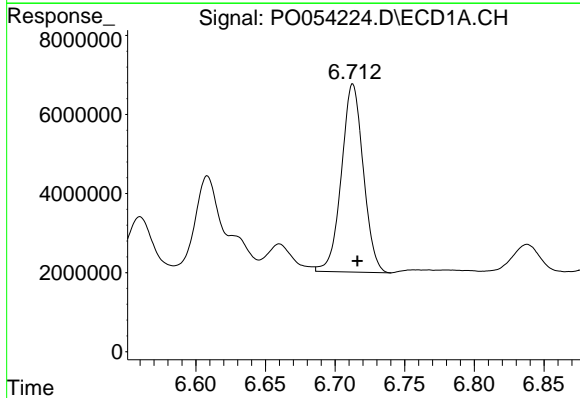
Instrument :
 ECD_O
ClientSampled :
 AR1660CCC500

Manual Integrations
APPROVED
 Sohil
 3/6/2019 2:11:04 PM



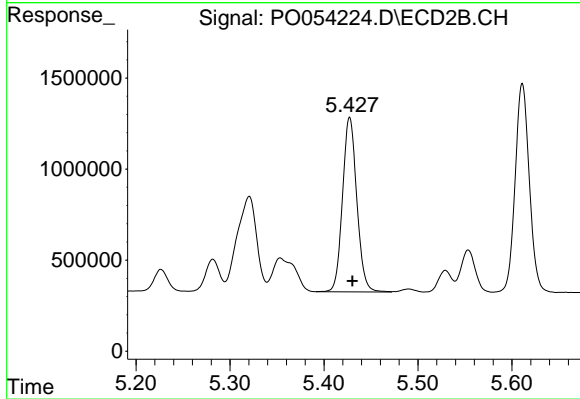
#7 AR-1016-5

R.T.: 4.484 min
 Delta R.T.: -0.002 min
 Response: 5730521
 Conc: 547.67 ng/ml m



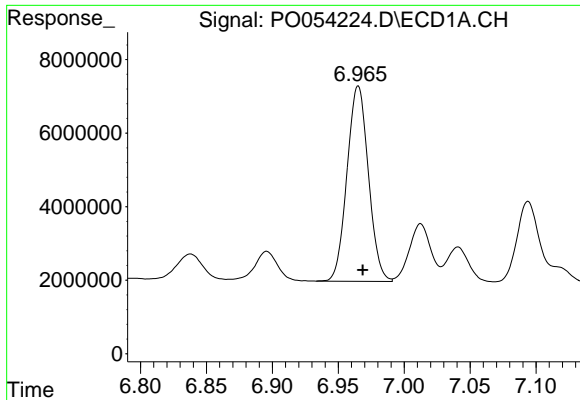
#31 AR-1260-1

R.T.: 6.713 min
 Delta R.T.: -0.003 min
 Response: 51946597
 Conc: 529.45 ng/ml



#31 AR-1260-1

R.T.: 5.427 min
 Delta R.T.: -0.003 min
 Response: 10117640
 Conc: 499.09 ng/ml

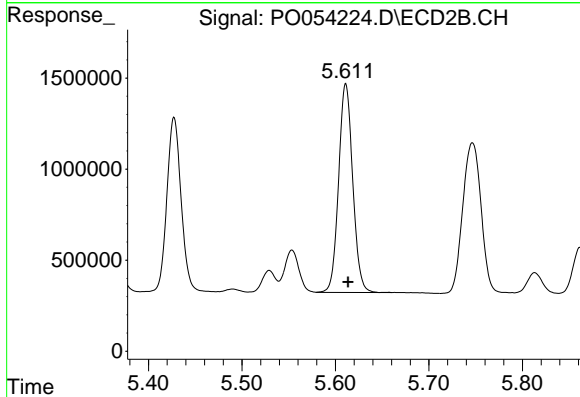


#32 AR-1260-2

R.T.: 6.965 min
 Delta R.T.: -0.003 min
 Response: 60035691
 Conc: 510.03 ng/ml

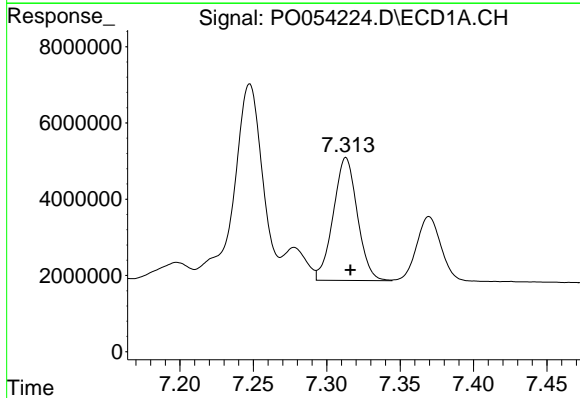
Instrument :
 ECD_O
ClientSampled :
 AR1660CCC500

Manual Integrations
APPROVED
 Sohil
 3/6/2019 2:11:04 PM



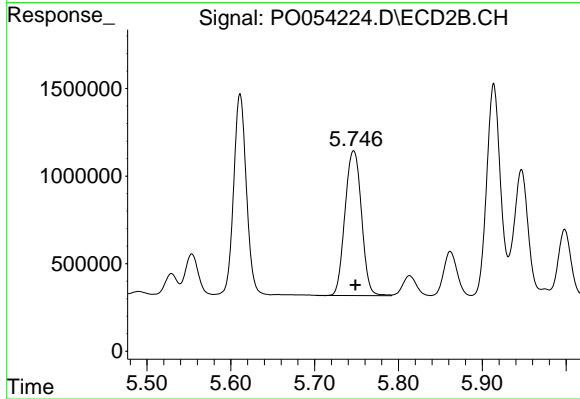
#32 AR-1260-2

R.T.: 5.611 min
 Delta R.T.: -0.002 min
 Response: 12016813
 Conc: 492.53 ng/ml



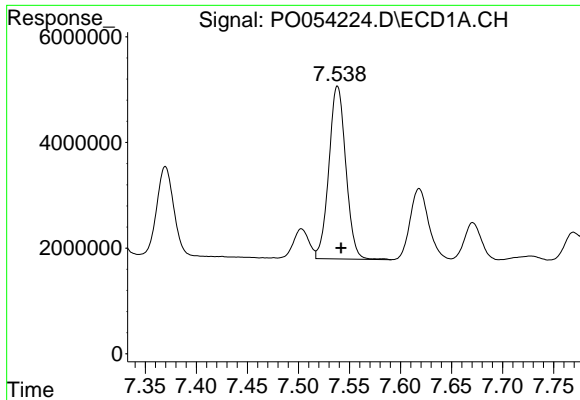
#33 AR-1260-3

R.T.: 7.313 min
 Delta R.T.: -0.003 min
 Response: 36804419
 Conc: 508.25 ng/ml



#33 AR-1260-3

R.T.: 5.747 min
 Delta R.T.: -0.002 min
 Response: 11290041
 Conc: 499.18 ng/ml

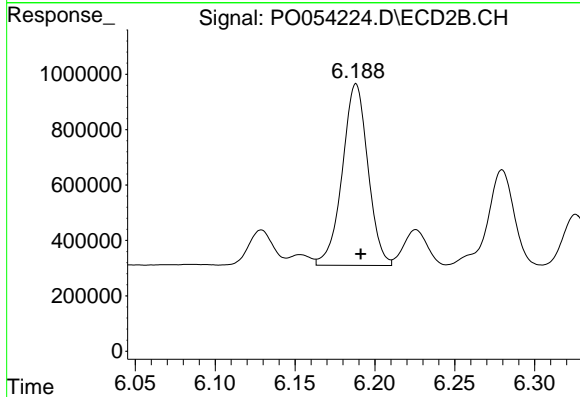


#34 AR-1260-4

R.T.: 7.538 min
 Delta R.T.: -0.003 min
 Response: 37790225
 Conc: 510.27 ng/ml

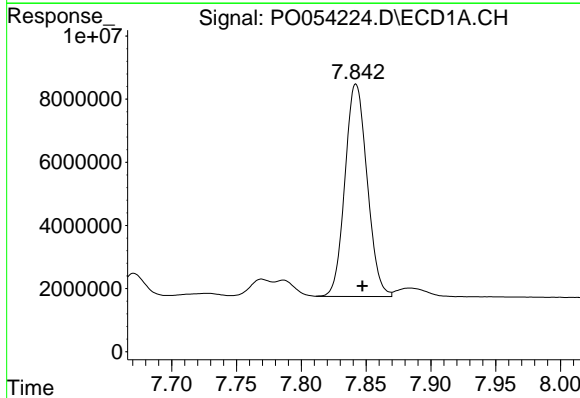
Instrument :
 ECD_O
ClientSampled :
 AR1660CCC500

Manual Integrations
APPROVED
 Sohil
 3/6/2019 2:11:04 PM



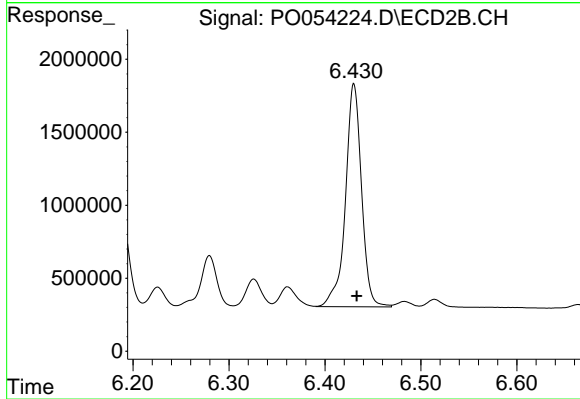
#34 AR-1260-4

R.T.: 6.188 min
 Delta R.T.: -0.003 min
 Response: 7315983
 Conc: 512.66 ng/ml



#35 AR-1260-5

R.T.: 7.842 min
 Delta R.T.: -0.005 min
 Response: 80204913
 Conc: 521.90 ng/ml



#35 AR-1260-5

R.T.: 6.430 min
 Delta R.T.: -0.003 min
 Response: 17820063
 Conc: 512.53 ng/ml