

Data Path : P:\HPCHEM1\ECD_P\Data\PP030618\
 Data File : PP024240.D
 Signal(s) : Signal #1: ECD1A.CH Signal #2: ECD2B.CH
 Acq On : 06 Mar 2018 14:58
 Operator : UA/AJ
 Sample : J1724-13
 Misc :
 ALS Vial : 10 Sample Multiplier: 1

Instrument :
 ECD_O
 ClientSampleId :
 SP-22

Integration File signal 1: autoint1.e
 Integration File signal 2: autoint2.e
 Quant Time: Mar 07 01:31:51 2018
 Quant Method : P:\HPCHEM1\ECD_P\methods\PP020618.M
 Quant Title : 8080.M
 QLast Update : Tue Feb 06 02:07:55 2018
 Response via : Initial Calibration
 Integrator: ChemStation 6890 Scale Mode: Large solvent peaks clipped

Volume Inj. : 2 µl
 Signal #1 Phase : Rtx-CLPesticides Signal #2 Phase: Rtx-CLPesticides2
 Signal #1 Info : 30M x 0.32mm x0.5 Signal #2 Info : 30M x 0.32mm x 0.25µm

Compound	RT#1	RT#2	Resp#1	Resp#2	ng/ml	ng/ml

System Monitoring Compounds						
4) S 2,4-DCAA	11.574	11.365	112.9E6	138.1E6	220.305	227.665
Target Compounds						
1) T Dalapon	2.953	0.000	5277173	0	6.612	N.D. #
2) T 3,5-DICHL...	0.000	9.457	0	2792632	N.D.	3.348 #
3) T 4-Nitroph...	0.000	10.525	0	8133355	N.D.	17.525 #
6) T MCPP	12.256	11.925	7205857	20140908	4.915	12.517 #
7) T MCPA	12.540	12.340	-2670527	17770349	N.D.	7.631
8) T DICHLORPROP	13.056	12.732	19839092	5307196	37.349	9.040 #
9) T 2,4-D	0.000	13.322	0	10071173	N.D.	13.118 #
10) T Pentachlo...	13.825	13.820	218.3E6	224.0E6	26.859	26.021
12) T 2,4,5-T	0.000	15.059	0	35978259	N.D.	11.679 #
13) T 2,4-DB	15.854	15.638	43933489	20081411	111.739	46.452 #
14) T DINOSEB	17.307	16.107	13604157	314.7E6	5.927	127.931 #
15) T Picloram	17.107	17.395	9985562	42248483	2.051	8.482 #
16) T DCPA	0.000	17.270	0	27496837	N.D.	6.320 #

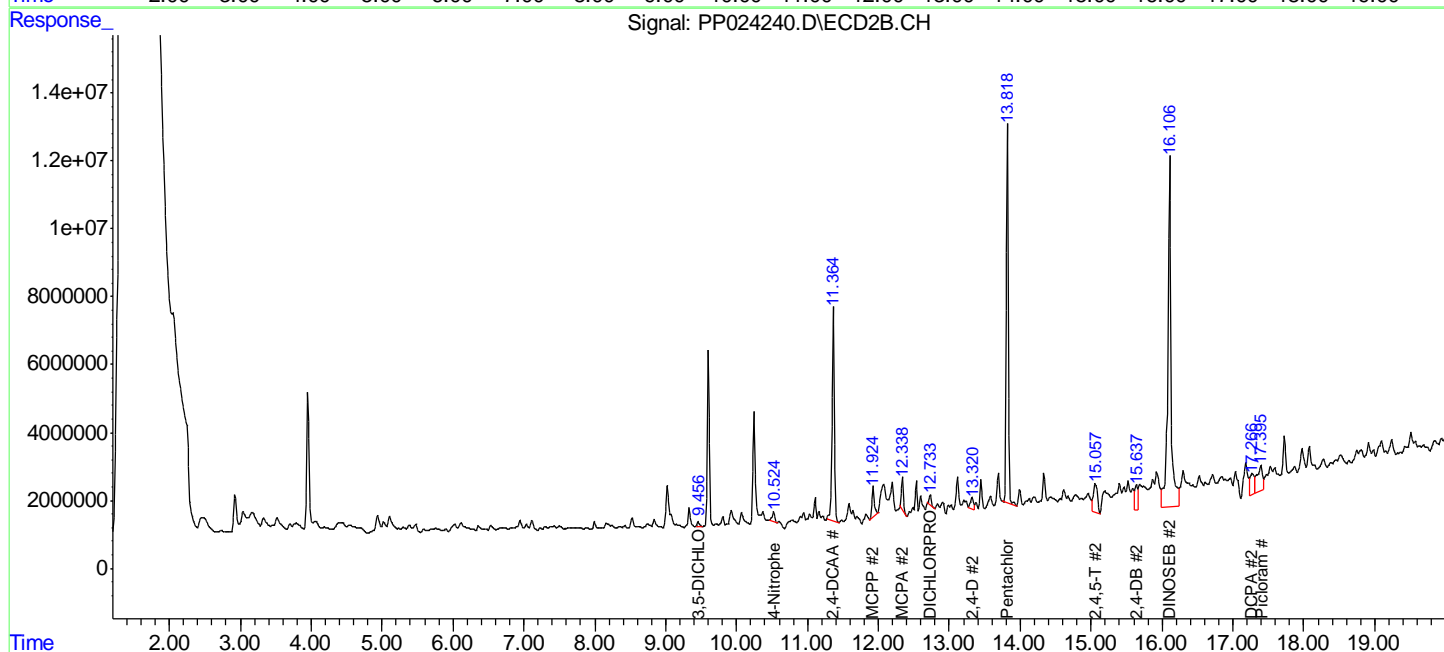
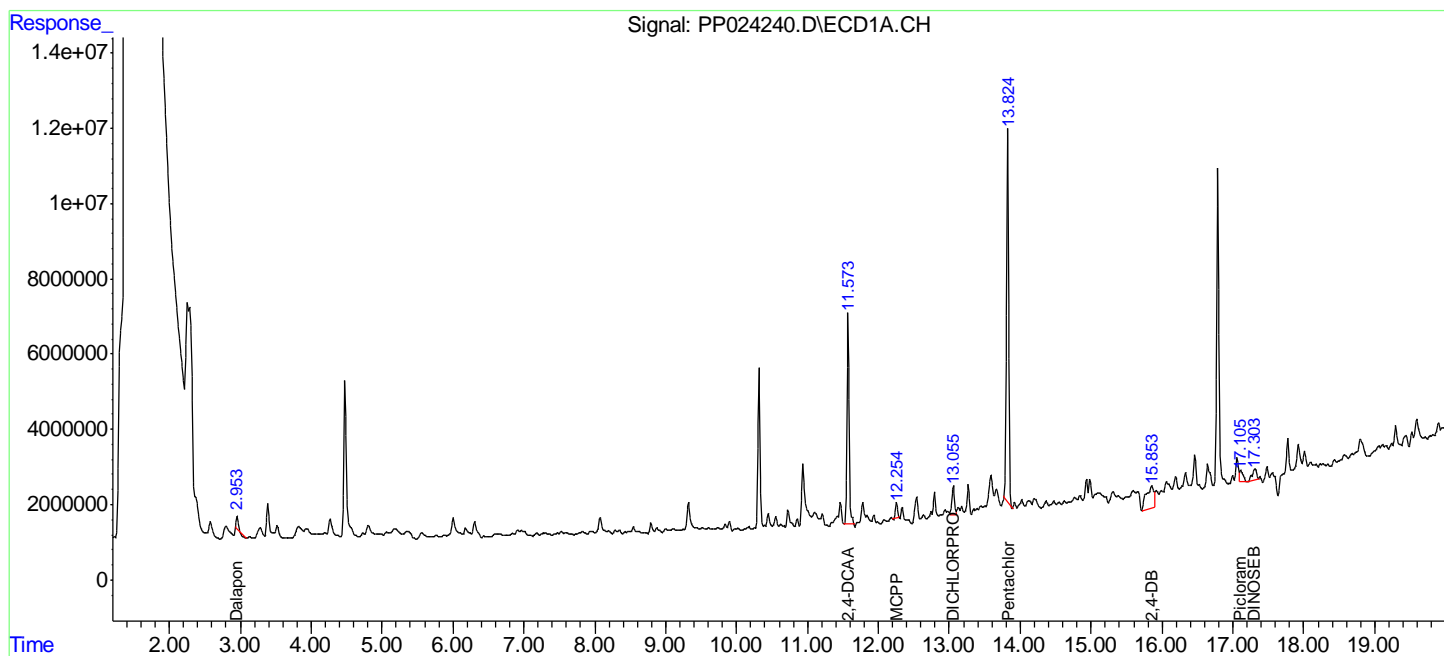
(f)=RT Delta > 1/2 Window (#)=Amounts differ by > 25% (m)=manual int.

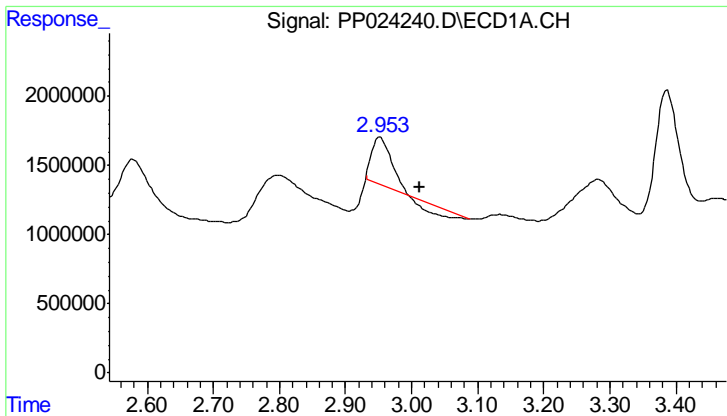
Data Path : P:\HPCHEM1\ECD_P\Data\PP030618\
 Data File : PP024240.D
 Signal(s) : Signal #1: ECD1A.CH Signal #2: ECD2B.CH
 Acq On : 06 Mar 2018 14:58
 Operator : UA/AJ
 Sample : J1724-13
 Misc :
 ALS Vial : 10 Sample Multiplier: 1

Instrument :
 ECD_O
 ClientSampled :
 SP-22

Integration File signal 1: autoint1.e
 Integration File signal 2: autoint2.e
 Quant Time: Mar 07 01:31:51 2018
 Quant Method : P:\HPCHEM1\ECD_P\methods\PP020618.M
 Quant Title : 8080.M
 QLast Update : Tue Feb 06 02:07:55 2018
 Response via : Initial Calibration
 Integrator: ChemStation 6890 Scale Mode: Large solvent peaks clipped

Volume Inj. : 2 µl
 Signal #1 Phase : Rtx-CLPesticides Signal #2 Phase: Rtx-CLPesticides2
 Signal #1 Info : 30M x 0.32mm x0.5 Signal #2 Info : 30M x 0.32mm x 0.25µm

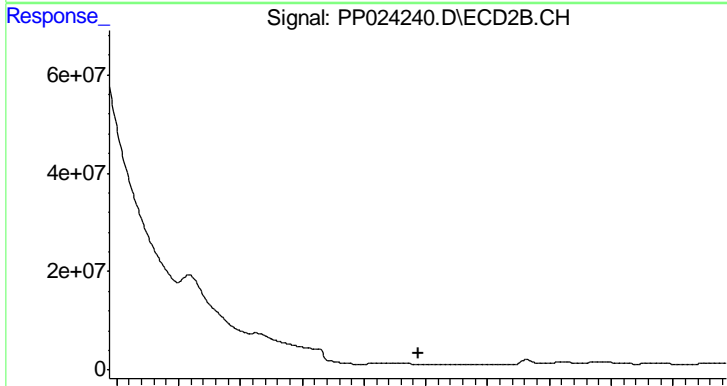




#1 Dalapon

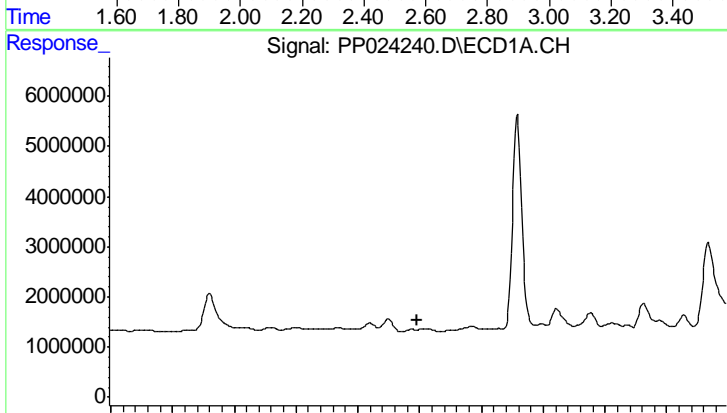
R.T.: 2.953 min
 Delta R.T.: -0.059 min
 Response: 5277173
 Conc: 6.61 ng/ml

Instrument :
 ECD_O
 ClientSampled :
 SP-22



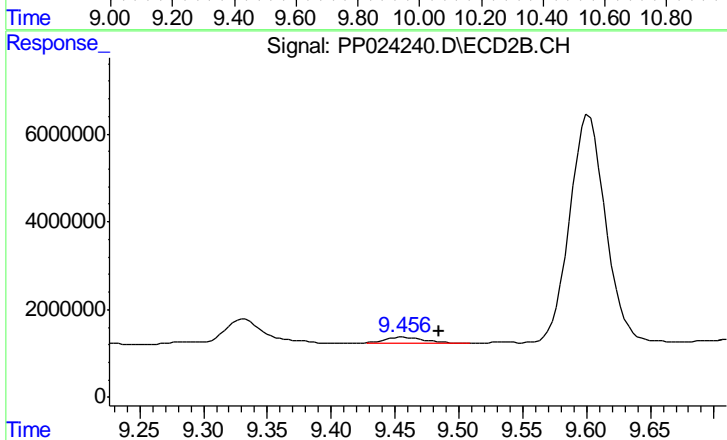
#1 Dalapon

R.T.: 0.000 min
 Exp R.T. : 2.575 min
 Response: 0
 Conc: N.D.



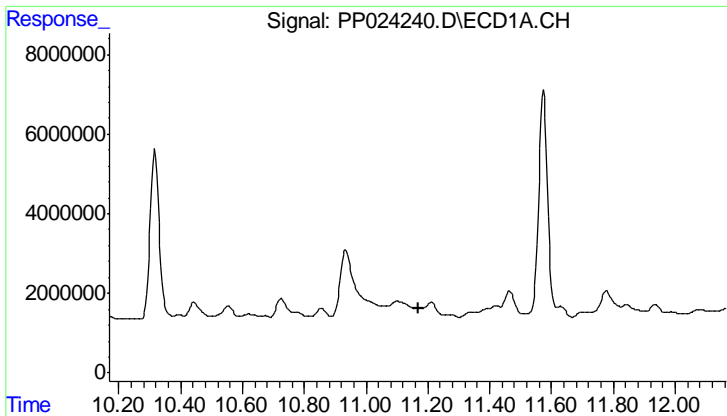
#2 3,5-DICHLOROBENZOIC ACID

R.T.: 0.000 min
 Exp R.T. : 9.994 min
 Response: 0
 Conc: N.D.



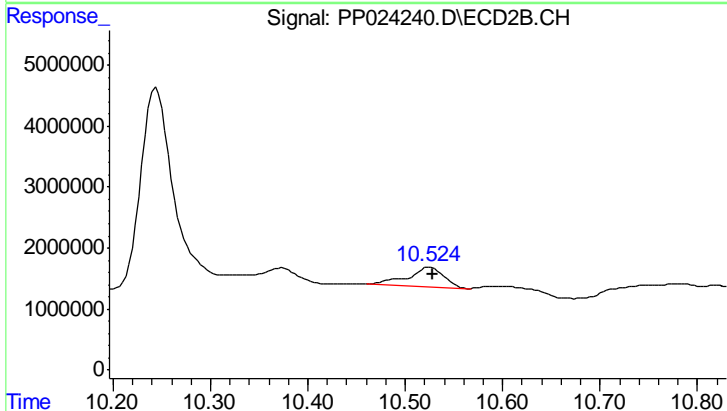
#2 3,5-DICHLOROBENZOIC ACID

R.T.: 9.457 min
 Delta R.T.: -0.027 min
 Response: 2792632
 Conc: 3.35 ng/ml

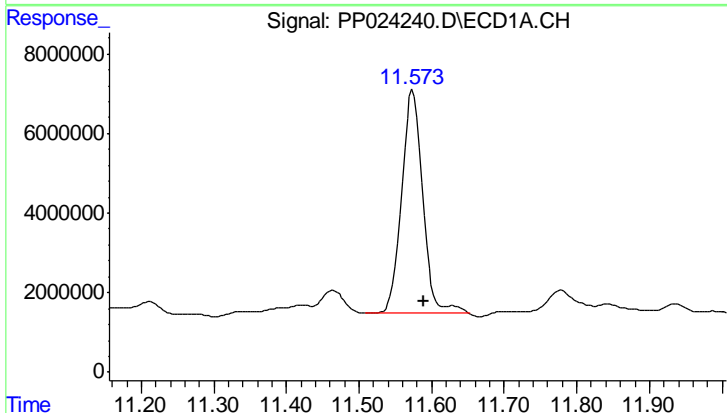


#3 4-Nitrophenol
 R.T.: 0.000 min
 Exp R.T.: 11.169 min
 Response: 0
 Conc: N.D.

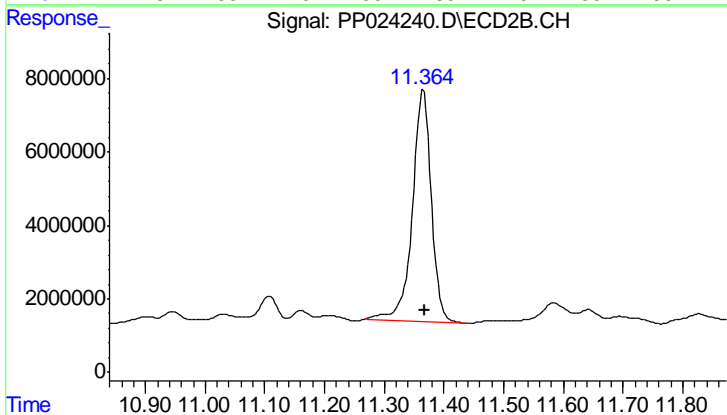
Instrument :
 ECD_O
 ClientSampled :
 SP-22



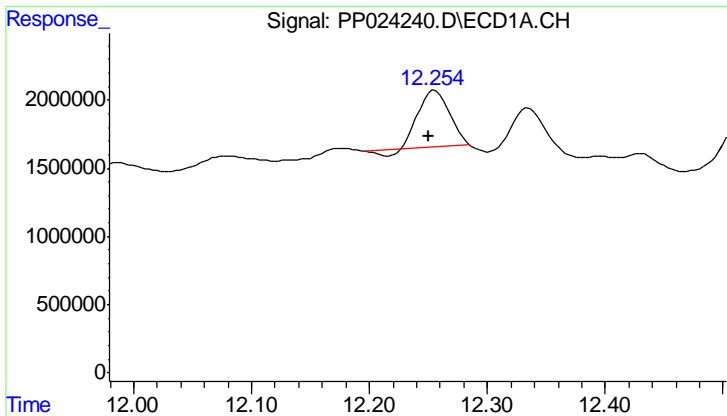
#3 4-Nitrophenol
 R.T.: 10.525 min
 Delta R.T.: -0.003 min
 Response: 8133355
 Conc: 17.53 ng/ml



#4 2,4-DCAA
 R.T.: 11.574 min
 Delta R.T.: -0.014 min
 Response: 112900045
 Conc: 220.31 ng/ml

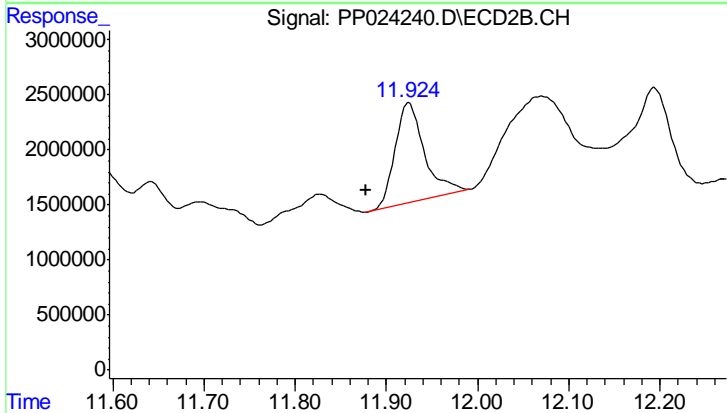


#4 2,4-DCAA
 R.T.: 11.365 min
 Delta R.T.: -0.003 min
 Response: 138059995
 Conc: 227.66 ng/ml

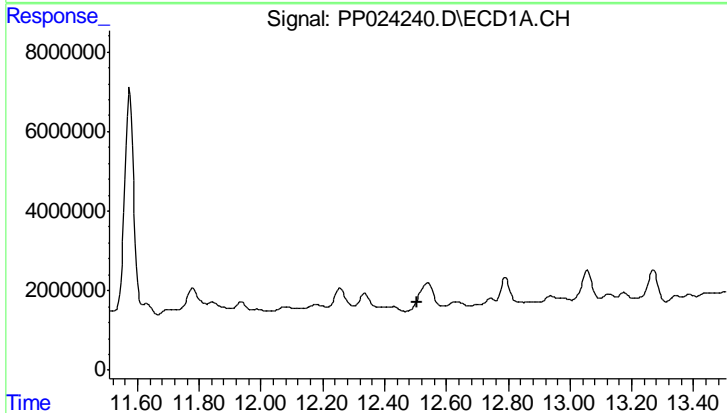


#6 MCPP
 R.T.: 12.256 min
 Delta R.T.: 0.005 min
 Response: 7205857
 Conc: 4.91 ug/ml

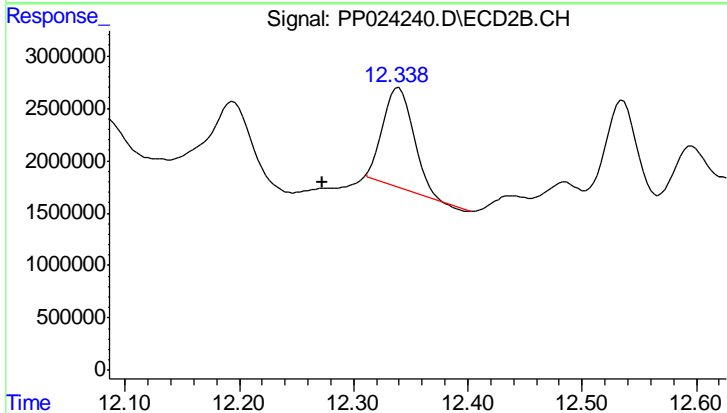
Instrument :
 ECD_O
 ClientSampleId :
 SP-22



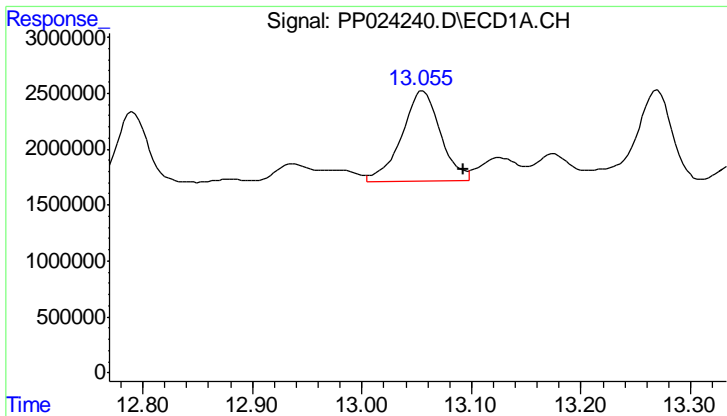
#6 MCPP
 R.T.: 11.925 min
 Delta R.T.: 0.048 min
 Response: 20140908
 Conc: 12.52 ug/ml



#7 MCPA
 R.T.: 12.540 min
 Delta R.T.: 0.033 min
 Response: -2670527
 Conc: N.D.



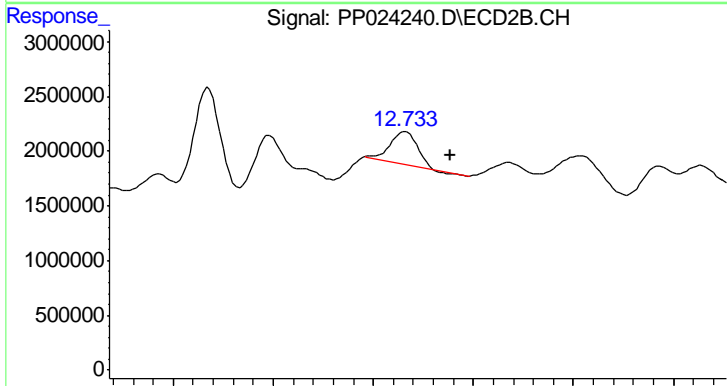
#7 MCPA
 R.T.: 12.340 min
 Delta R.T.: 0.066 min
 Response: 17770349
 Conc: 7.63 ug/ml



#8 DICHLORPROP

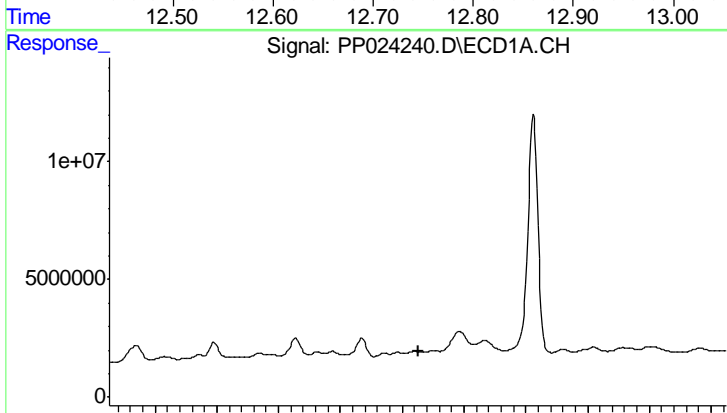
R.T.: 13.056 min
 Delta R.T.: -0.037 min
 Response: 19839092
 Conc: 37.35 ng/ml

Instrument :
 ECD_O
 ClientSampled :
 SP-22



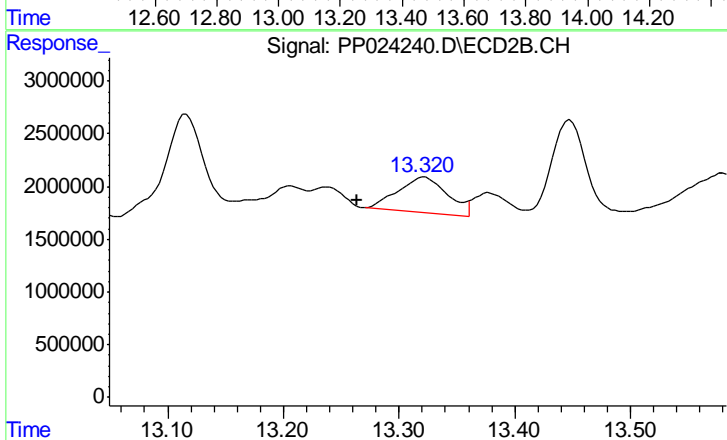
#8 DICHLORPROP

R.T.: 12.732 min
 Delta R.T.: -0.046 min
 Response: 5307196
 Conc: 9.04 ng/ml



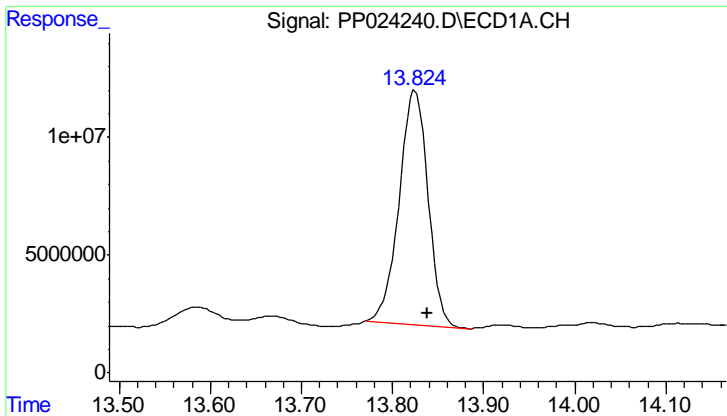
#9 2,4-D

R.T.: 0.000 min
 Exp R.T. : 13.453 min
 Response: 0
 Conc: N.D.



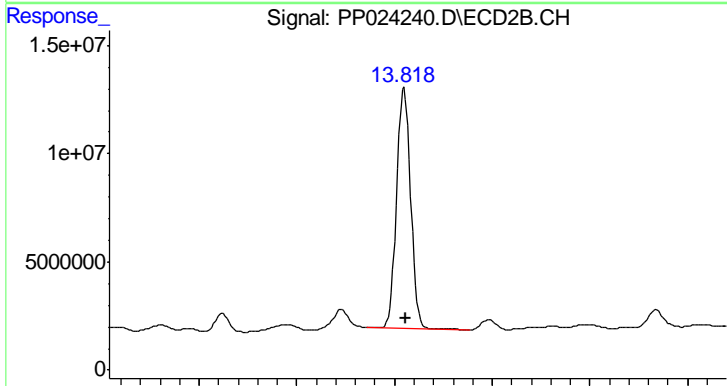
#9 2,4-D

R.T.: 13.322 min
 Delta R.T.: 0.058 min
 Response: 10071173
 Conc: 13.12 ng/ml

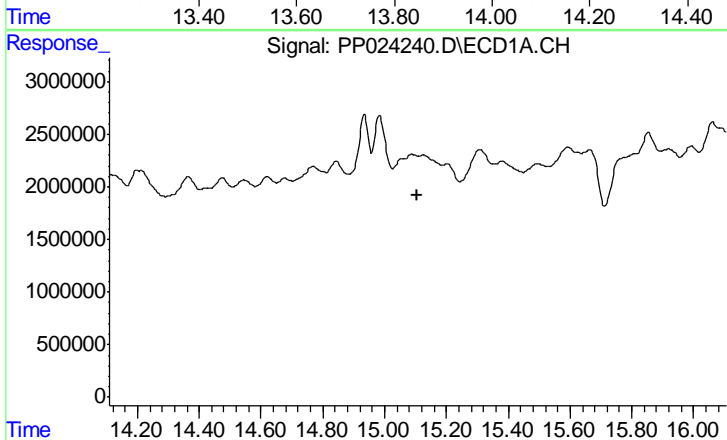


#10 Pentachlorophenol
 R.T.: 13.825 min
 Delta R.T.: -0.013 min
 Response: 218338103
 Conc: 26.86 ng/ml

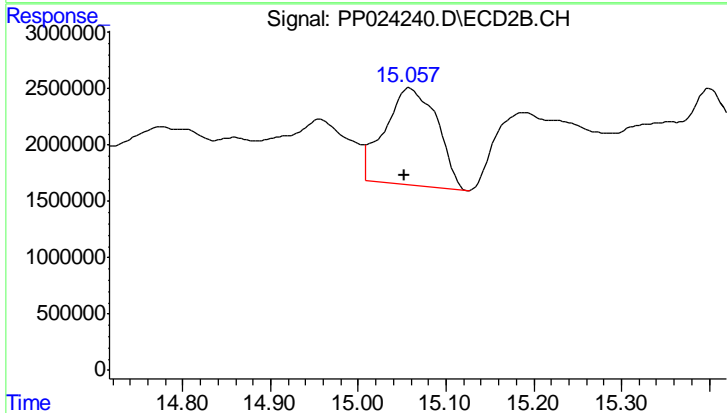
Instrument :
 ECD_O
 ClientSampled :
 SP-22



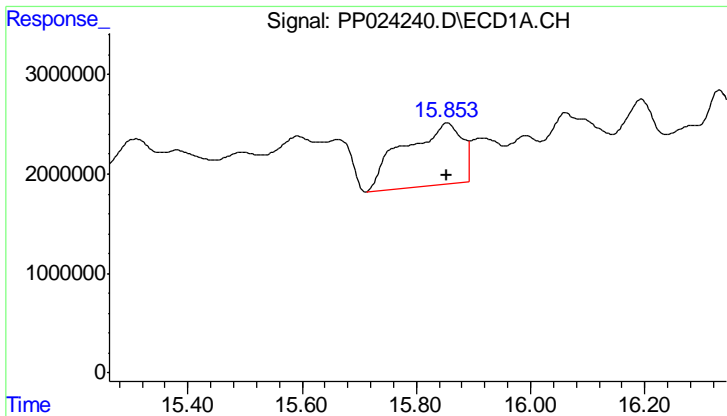
#10 Pentachlorophenol
 R.T.: 13.820 min
 Delta R.T.: -0.003 min
 Response: 224025846
 Conc: 26.02 ng/ml



#12 2,4,5-T
 R.T.: 0.000 min
 Exp R.T. : 15.106 min
 Response: 0
 Conc: N.D.



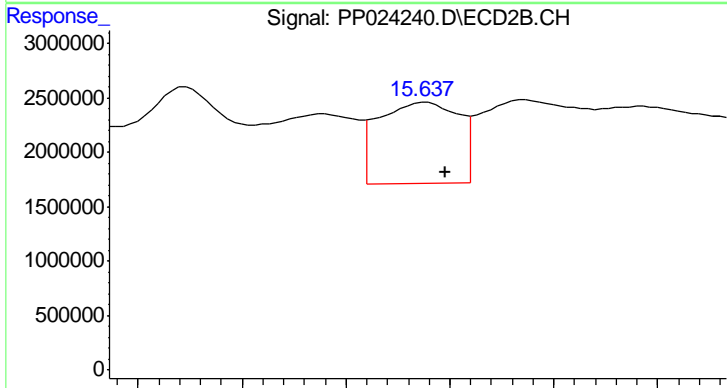
#12 2,4,5-T
 R.T.: 15.059 min
 Delta R.T.: 0.006 min
 Response: 35978259
 Conc: 11.68 ng/ml



#13 2,4-DB

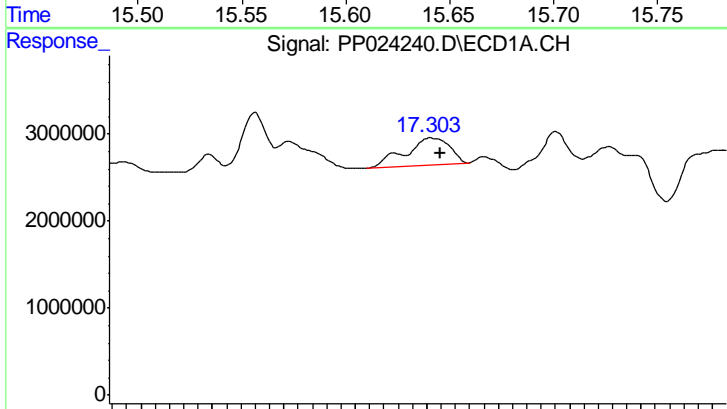
R.T.: 15.854 min
 Delta R.T.: 0.002 min
 Response: 43933489
 Conc: 111.74 ng/ml

Instrument :
 ECD_O
 ClientSampled :
 SP-22



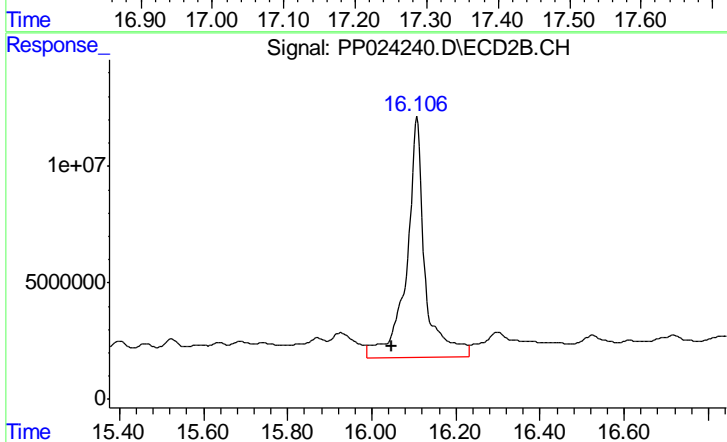
#13 2,4-DB

R.T.: 15.638 min
 Delta R.T.: -0.010 min
 Response: 20081411
 Conc: 46.45 ng/ml



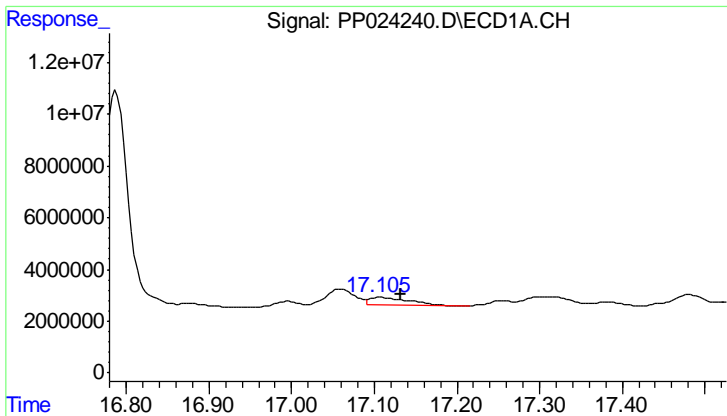
#14 DINOSEB

R.T.: 17.307 min
 Delta R.T.: -0.013 min
 Response: 13604157
 Conc: 5.93 ng/ml



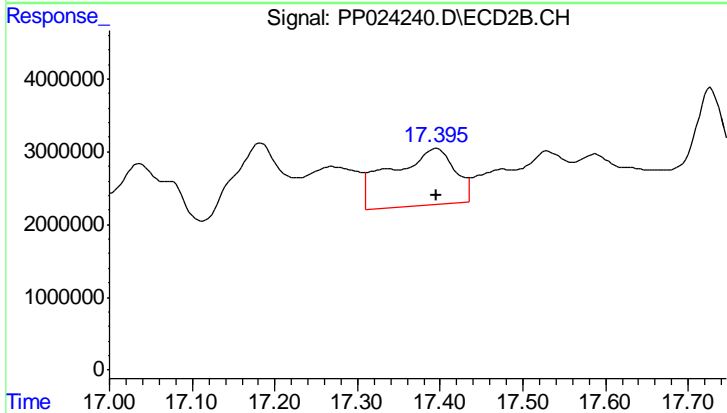
#14 DINOSEB

R.T.: 16.107 min
 Delta R.T.: 0.059 min
 Response: 314695473
 Conc: 127.93 ng/ml

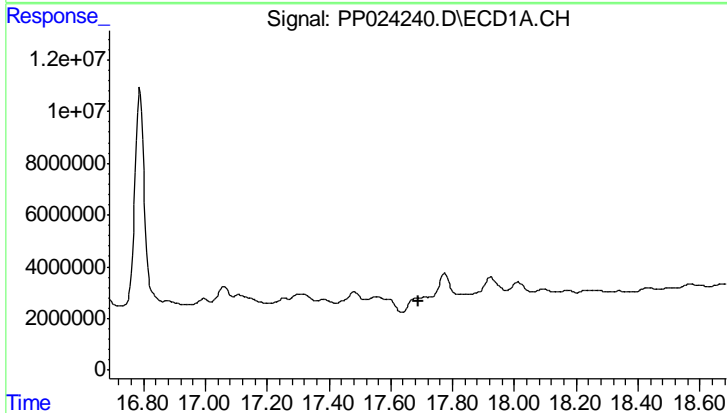


#15 Picloram
 R.T.: 17.107 min
 Delta R.T.: -0.025 min
 Response: 9985562
 Conc: 2.05 ng/ml

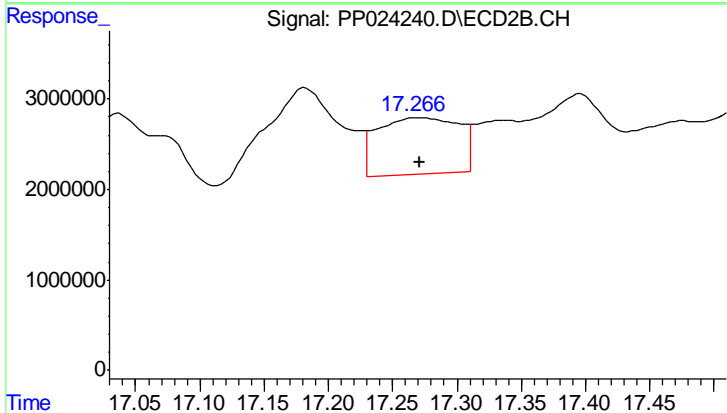
Instrument :
 ECD_O
 ClientSampled :
 SP-22



#15 Picloram
 R.T.: 17.395 min
 Delta R.T.: 0.000 min
 Response: 42248483
 Conc: 8.48 ng/ml



#16 DCPA
 R.T.: 0.000 min
 Exp R.T. : 17.689 min
 Response: 0
 Conc: N.D.



#16 DCPA
 R.T.: 17.270 min
 Delta R.T.: 0.000 min
 Response: 27496837
 Conc: 6.32 ng/ml