

Data Path : P:\HPCHEM1\ECD_P\Data\PP030618\
 Data File : PP024266.D
 Signal(s) : Signal #1: ECD1A.CH Signal #2: ECD2B.CH
 Acq On : 07 Mar 2018 1:34
 Operator : UA/AJ
 Sample : PB107056BS
 Misc :
 ALS Vial : 32 Sample Multiplier: 1

Instrument :
 ECD_O
 ClientSampleId :
 PB107056BS

Integration File signal 1: autoint1.e
 Integration File signal 2: autoint2.e
 Quant Time: Mar 07 03:44:18 2018
 Quant Method : P:\HPCHEM1\ECD_P\methods\PP020618.M
 Quant Title : 8080.M
 QLast Update : Tue Feb 06 02:07:55 2018
 Response via : Initial Calibration
 Integrator: ChemStation 6890 Scale Mode: Large solvent peaks clipped

Volume Inj. : 2 µl
 Signal #1 Phase : Rtx-CLPesticides Signal #2 Phase: Rtx-CLPesticides2
 Signal #1 Info : 30M x 0.32mm x0.5 Signal #2 Info : 30M x 0.32mm x 0.25µm

Compound	RT#1	RT#2	Resp#1	Resp#2	ng/ml	ng/ml

System Monitoring Compounds						
4) S 2,4-DCAA	11.576	11.366	270.2E6	319.8E6	527.305	527.411
Target Compounds						
1) T Dalapon	3.016	2.585	266.0E6	280.2E6	333.239	338.581
2) T 3,5-DICHL...	9.986	9.485	338.3E6	355.0E6	424.836	425.656
3) T 4-Nitroph...	11.160	10.528	124.5E6	143.4E6	289.499	309.009
5) T DICAMBA	11.894	11.664	967.4E6	1041.7E6	449.878	458.676
6) T MCPP	12.227	11.865	71243297	65627979	48.591	40.787
7) T MCPA	12.480	12.256	80959443	77660500	36.756	33.350
8) T DICHLORPROP	13.078	12.774	252.5E6	281.9E6	475.264	480.118
9) T 2,4-D	13.437	13.261	301.5E6	348.6E6	450.348	454.072
10) T Pentachlo...	13.827	13.821	3885.3E6	4108.1E6	477.948	477.163
11) T 2,4,5-TP ...	14.690	14.417	1481.1E6	1645.3E6	447.147	459.902
12) T 2,4,5-T	15.090	15.049	1316.0E6	1293.0E6	421.212	419.723
13) T 2,4-DB	15.832	15.643	170.8E6	190.6E6	434.429	440.792
14) T DINOSEB	17.298	16.043	756.2E6	771.6E6	329.485	313.666
15) T Picloram	17.109	17.389	1678.7E6	1719.4E6	344.798	345.175
16) T DCPA	17.666	17.265	1241.6E6	1460.4E6	316.651	335.646

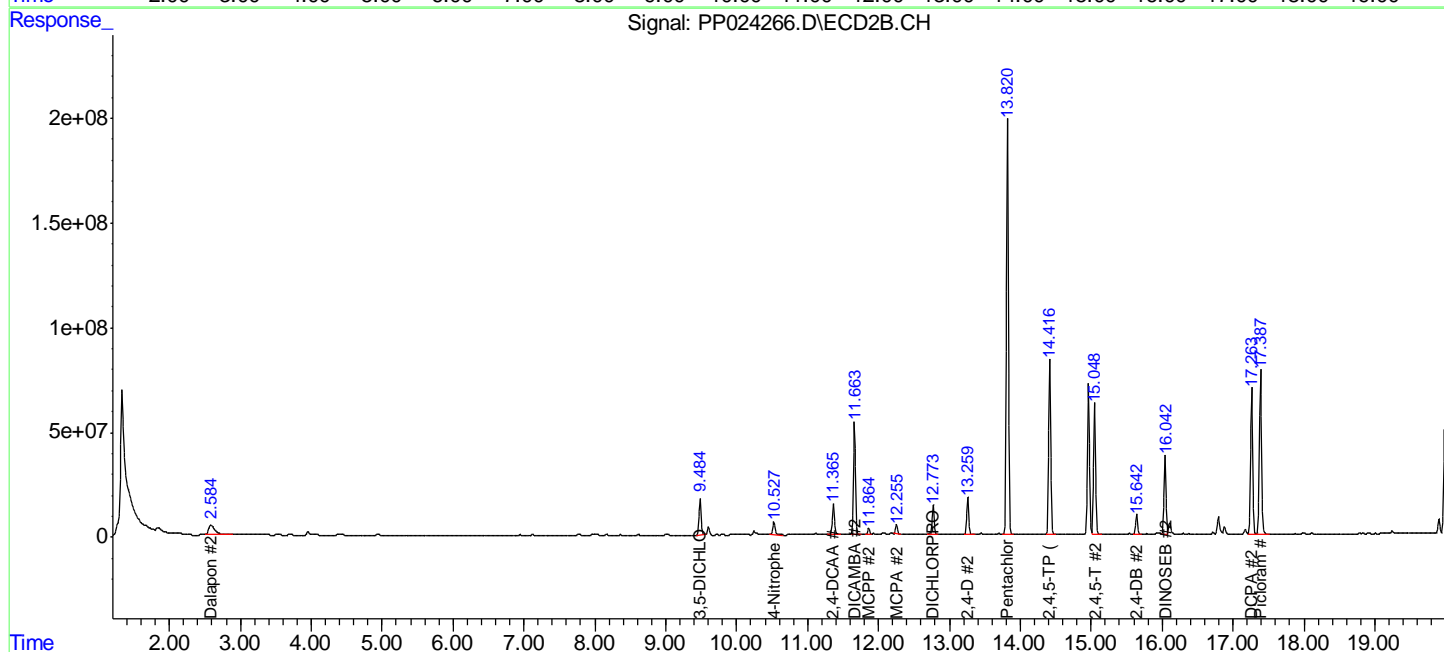
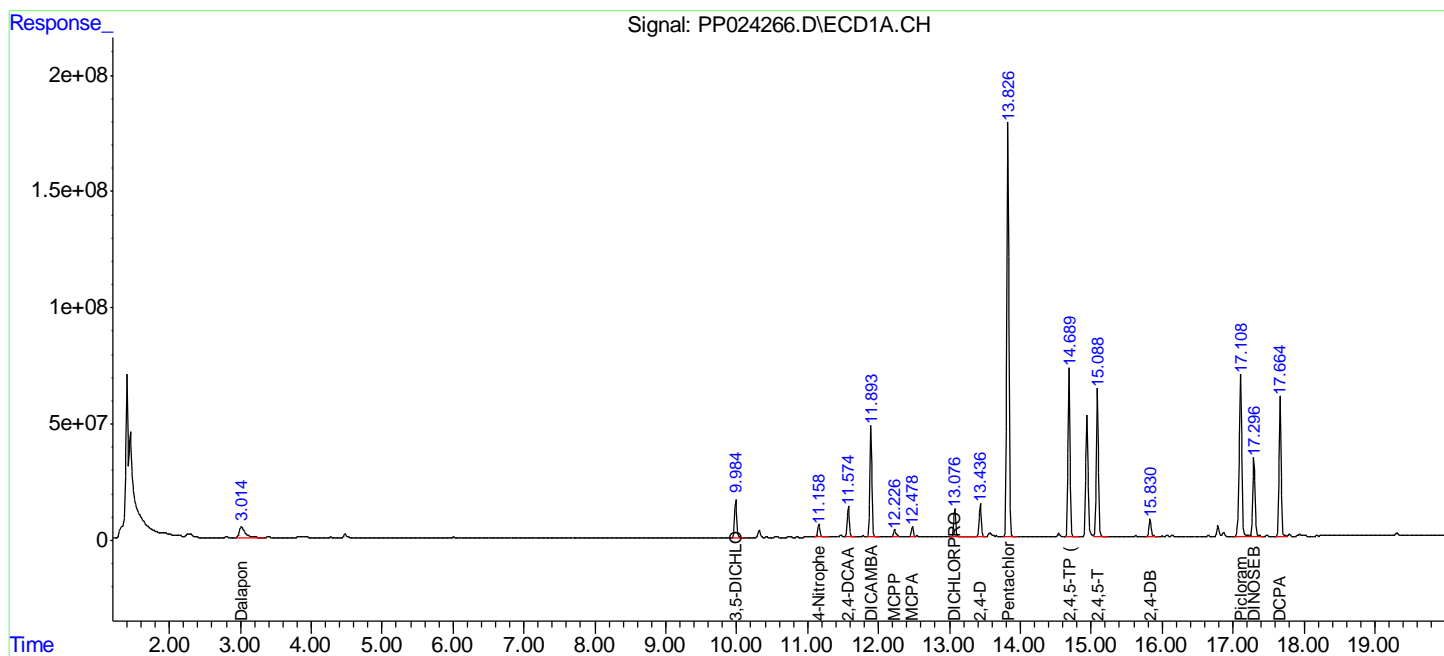
(f)=RT Delta > 1/2 Window (#)=Amounts differ by > 25% (m)=manual int.

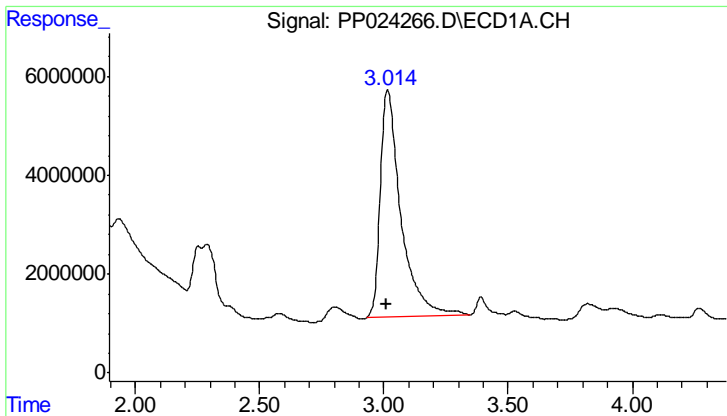
Data Path : P:\HPCHEM1\ECD_P\Data\PP030618\
 Data File : PP024266.D
 Signal(s) : Signal #1: ECD1A.CH Signal #2: ECD2B.CH
 Acq On : 07 Mar 2018 1:34
 Operator : UA/AJ
 Sample : PB107056BS
 Misc :
 ALS Vial : 32 Sample Multiplier: 1

Instrument :
 ECD_O
 ClientSampled :
 PB107056BS

Integration File signal 1: autoint1.e
 Integration File signal 2: autoint2.e
 Quant Time: Mar 07 03:44:18 2018
 Quant Method : P:\HPCHEM1\ECD_P\methods\PP020618.M
 Quant Title : 8080.M
 QLast Update : Tue Feb 06 02:07:55 2018
 Response via : Initial Calibration
 Integrator: ChemStation 6890 Scale Mode: Large solvent peaks clipped

Volume Inj. : 2 µl
 Signal #1 Phase : Rtx-CLPesticides Signal #2 Phase: Rtx-CLPesticides2
 Signal #1 Info : 30M x 0.32mm x0.5 Signal #2 Info : 30M x 0.32mm x 0.25µm

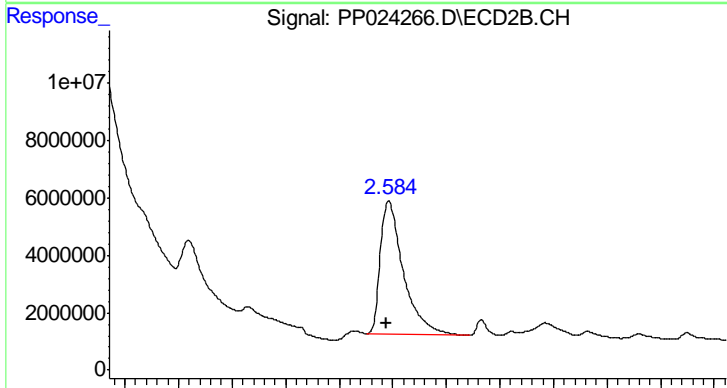




#1 Dalapon

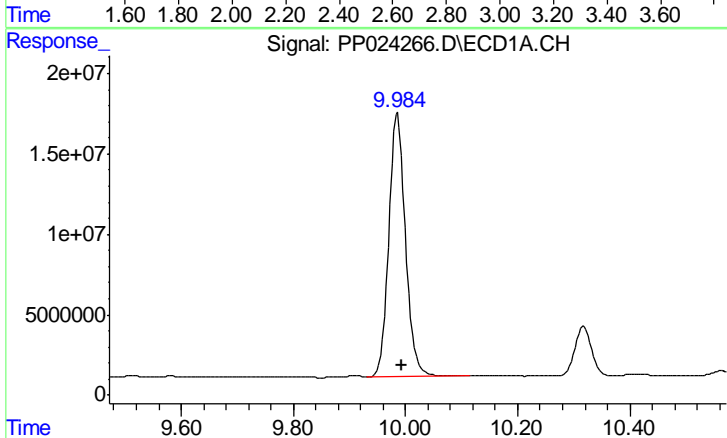
R.T.: 3.016 min
 Delta R.T.: 0.004 min
 Response: 265963127
 Conc: 333.24 ng/ml

Instrument :
 ECD_O
 ClientSampled :
 PB107056BS



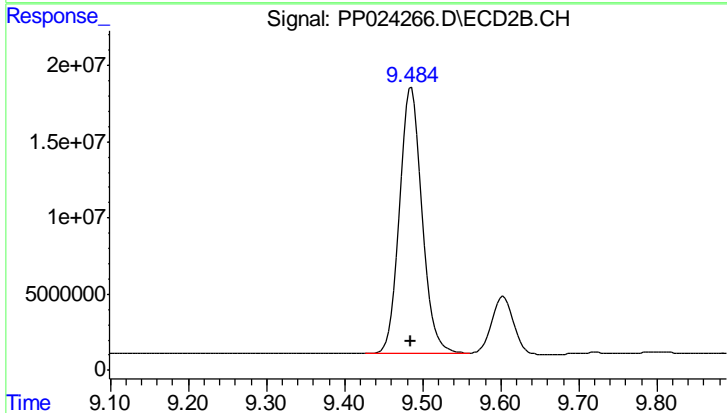
#1 Dalapon

R.T.: 2.585 min
 Delta R.T.: 0.010 min
 Response: 280246057
 Conc: 338.58 ng/ml



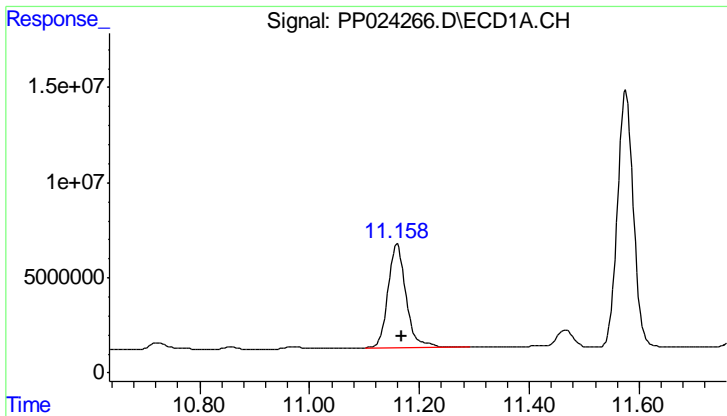
#2 3,5-DICHLOROBENZOIC ACID

R.T.: 9.986 min
 Delta R.T.: -0.009 min
 Response: 338298019
 Conc: 424.84 ng/ml



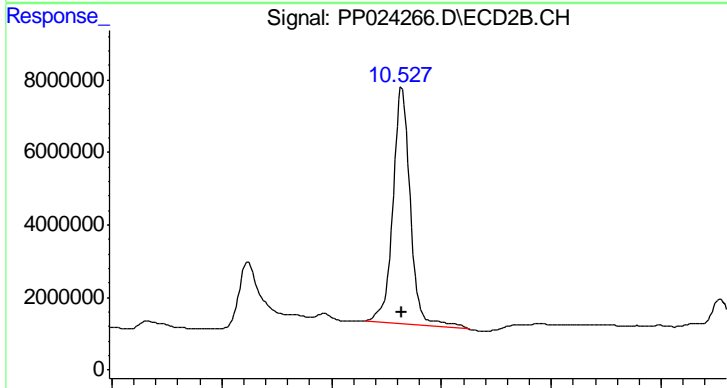
#2 3,5-DICHLOROBENZOIC ACID

R.T.: 9.485 min
 Delta R.T.: 0.000 min
 Response: 355032037
 Conc: 425.66 ng/ml

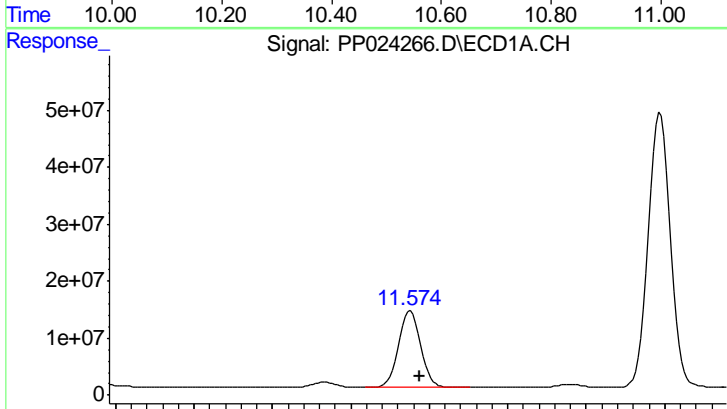


#3 4-Nitrophenol
 R.T.: 11.160 min
 Delta R.T.: -0.009 min
 Response: 124476088
 Conc: 289.50 ng/ml

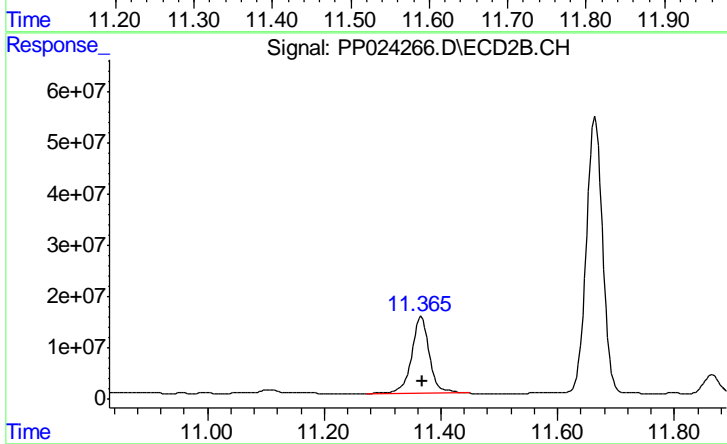
Instrument :
 ECD_O
 ClientSampleId :
 PB107056BS



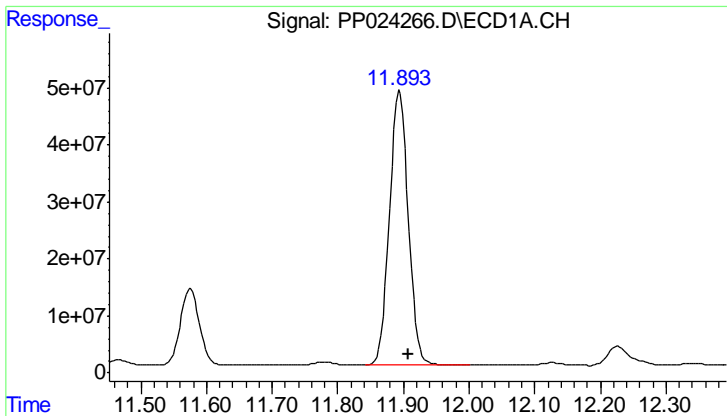
#3 4-Nitrophenol
 R.T.: 10.528 min
 Delta R.T.: 0.000 min
 Response: 143411136
 Conc: 309.01 ng/ml



#4 2,4-DCAA
 R.T.: 11.576 min
 Delta R.T.: -0.013 min
 Response: 270228725
 Conc: 527.31 ng/ml



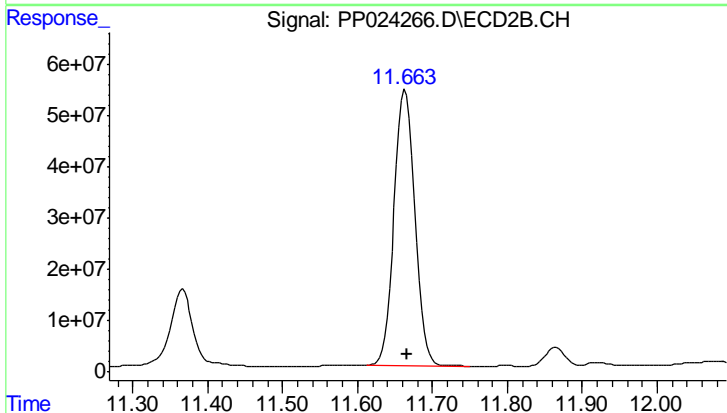
#4 2,4-DCAA
 R.T.: 11.366 min
 Delta R.T.: -0.002 min
 Response: 319831492
 Conc: 527.41 ng/ml



#5 DICAMBA

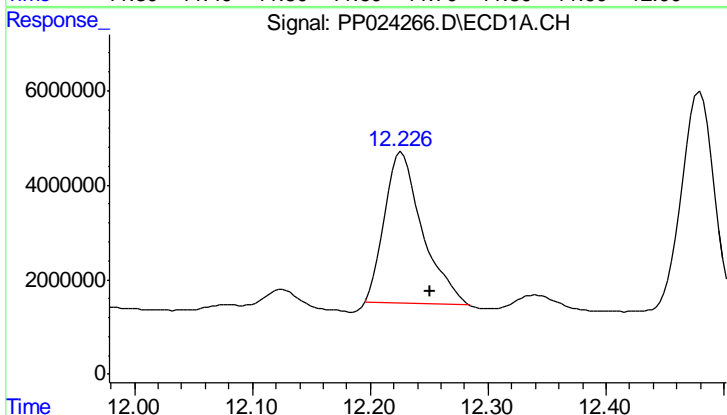
R.T.: 11.894 min
 Delta R.T.: -0.013 min
 Response: 967406124
 Conc: 449.88 ng/ml

Instrument :
 ECD_O
 ClientSampleId :
 PB107056BS



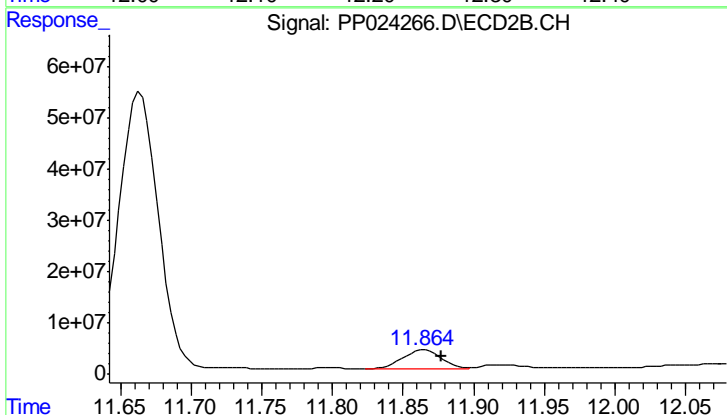
#5 DICAMBA

R.T.: 11.664 min
 Delta R.T.: -0.002 min
 Response: 1041668699
 Conc: 458.68 ng/ml



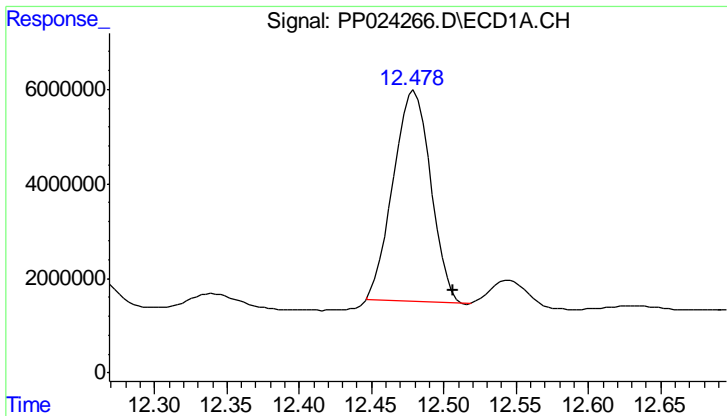
#6 MCPP

R.T.: 12.227 min
 Delta R.T.: -0.023 min
 Response: 71243297
 Conc: 48.59 ug/ml



#6 MCPP

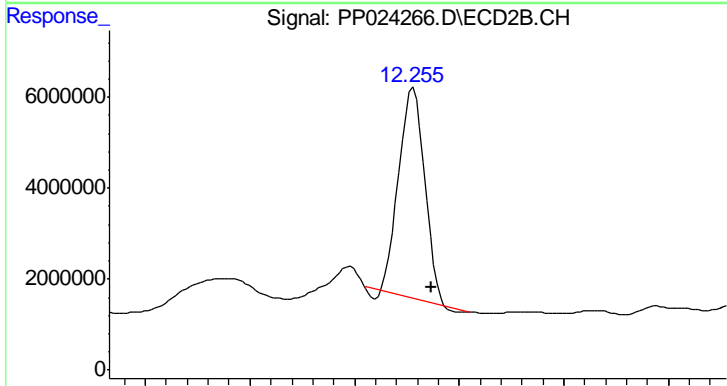
R.T.: 11.865 min
 Delta R.T.: -0.013 min
 Response: 65627979
 Conc: 40.79 ug/ml



#7 MCPA

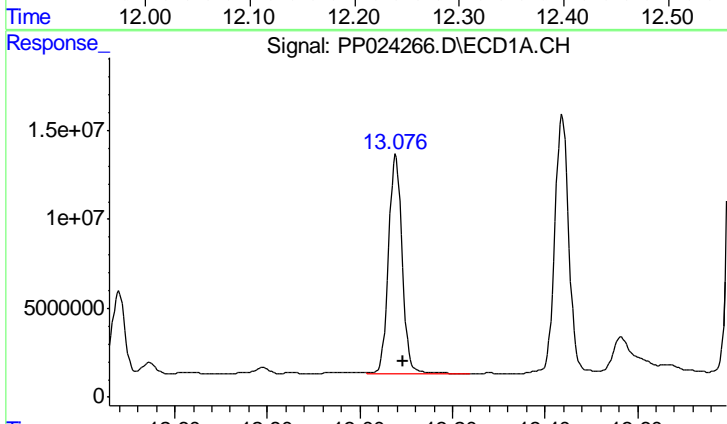
R.T.: 12.480 min
 Delta R.T.: -0.027 min
 Response: 80959443
 Conc: 36.76 ug/ml

Instrument :
 ECD_O
 ClientSampled :
 PB107056BS



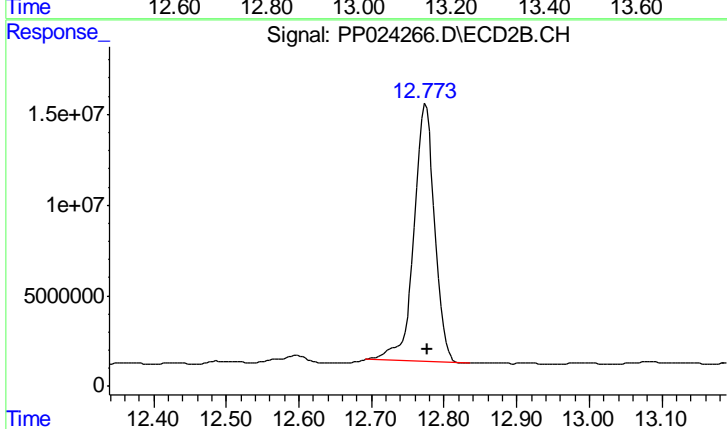
#7 MCPA

R.T.: 12.256 min
 Delta R.T.: -0.017 min
 Response: 77660500
 Conc: 33.35 ug/ml



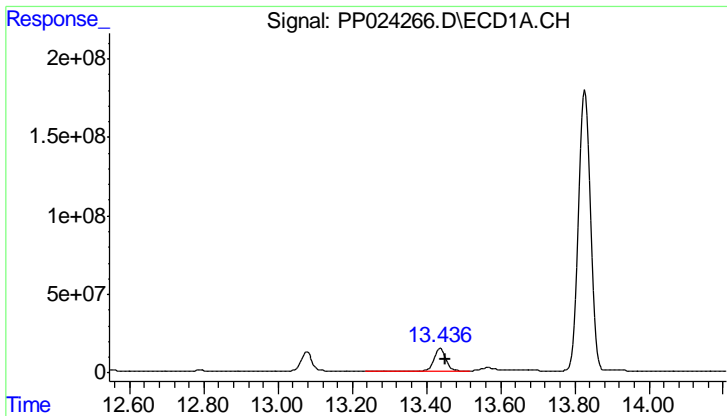
#8 DICHLORPROP

R.T.: 13.078 min
 Delta R.T.: -0.015 min
 Response: 252454236
 Conc: 475.26 ng/ml



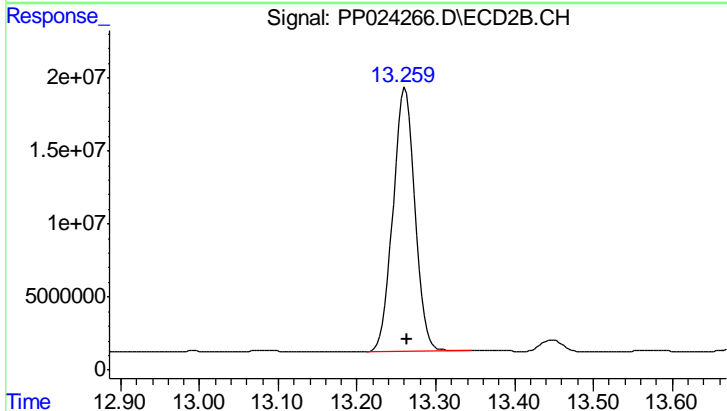
#8 DICHLORPROP

R.T.: 12.774 min
 Delta R.T.: -0.003 min
 Response: 281875504
 Conc: 480.12 ng/ml

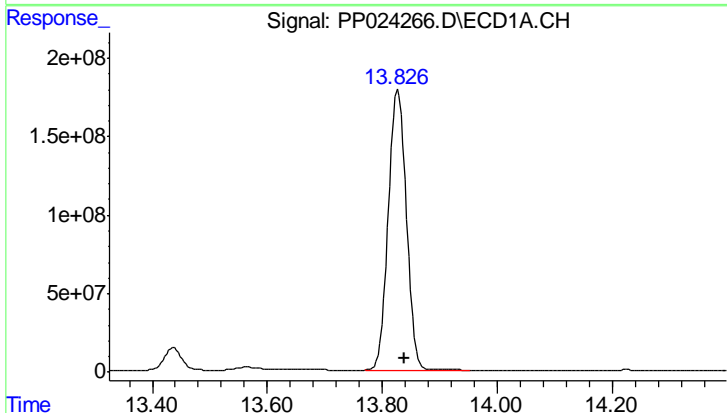


#9 2,4-D
 R.T.: 13.437 min
 Delta R.T.: -0.015 min
 Response: 301517919
 Conc: 450.35 ng/ml

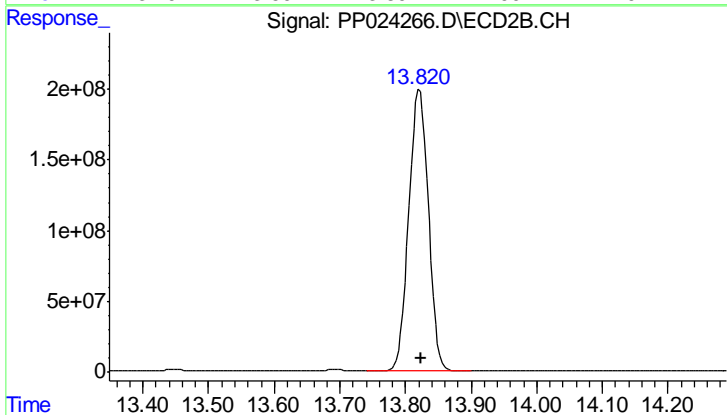
Instrument :
 ECD_O
 ClientSampleId :
 PB107056BS



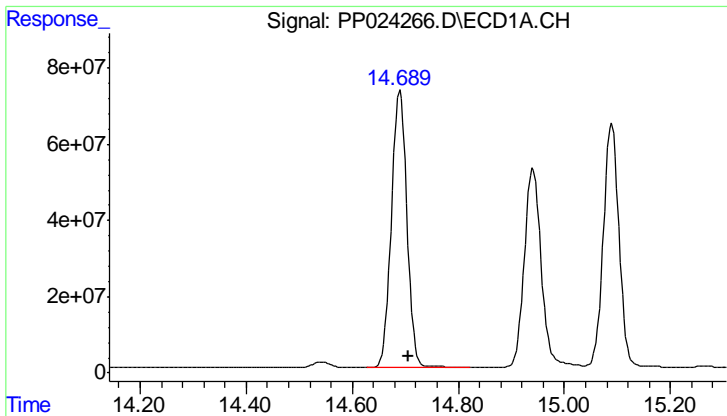
#9 2,4-D
 R.T.: 13.261 min
 Delta R.T.: -0.004 min
 Response: 348602624
 Conc: 454.07 ng/ml



#10 Pentachlorophenol
 R.T.: 13.827 min
 Delta R.T.: -0.011 min
 Response: 3885273193
 Conc: 477.95 ng/ml

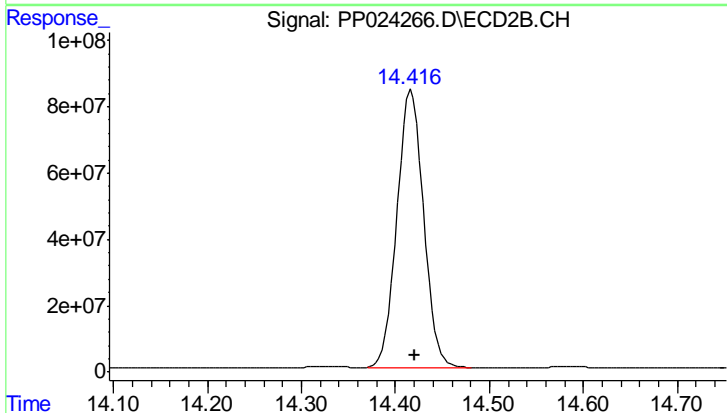


#10 Pentachlorophenol
 R.T.: 13.821 min
 Delta R.T.: -0.002 min
 Response: 4108139048
 Conc: 477.16 ng/ml

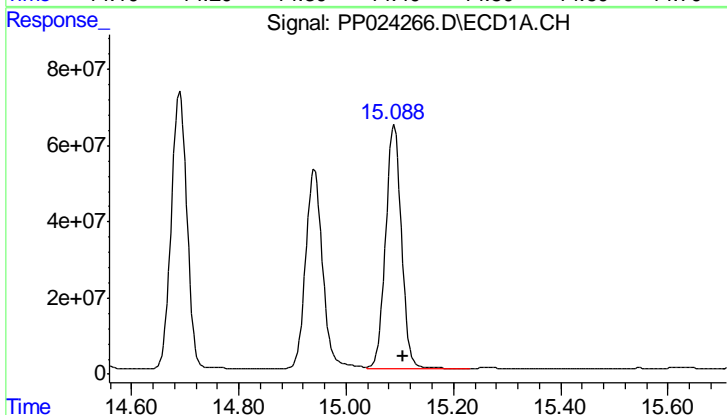


#11 2,4,5-TP (SILVEX)
 R.T.: 14.690 min
 Delta R.T.: -0.017 min
 Response: 1481135496
 Conc: 447.15 ng/ml

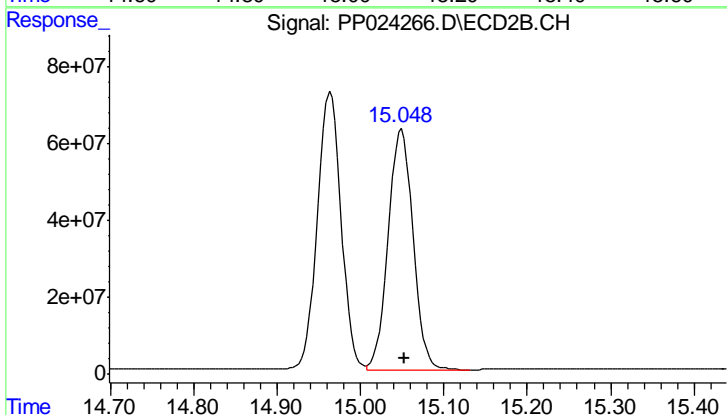
Instrument :
 ECD_O
 ClientSampleId :
 PB107056BS



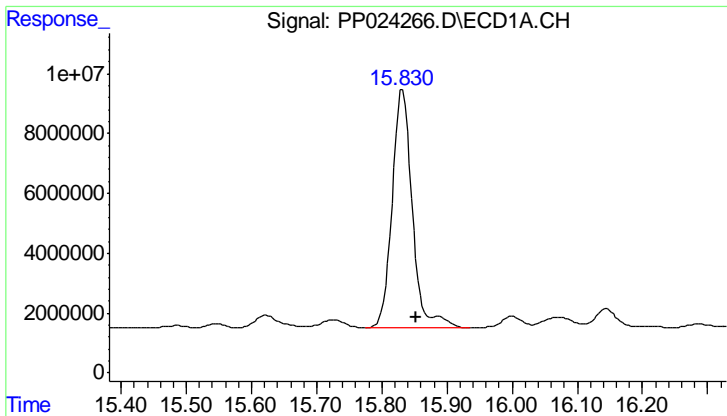
#11 2,4,5-TP (SILVEX)
 R.T.: 14.417 min
 Delta R.T.: -0.004 min
 Response: 1645318500
 Conc: 459.90 ng/ml



#12 2,4,5-T
 R.T.: 15.090 min
 Delta R.T.: -0.017 min
 Response: 1316025007
 Conc: 421.21 ng/ml



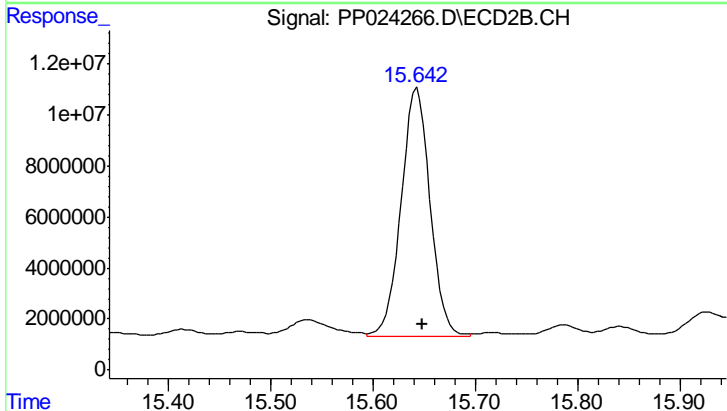
#12 2,4,5-T
 R.T.: 15.049 min
 Delta R.T.: -0.004 min
 Response: 1292994742
 Conc: 419.72 ng/ml



#13 2,4-DB

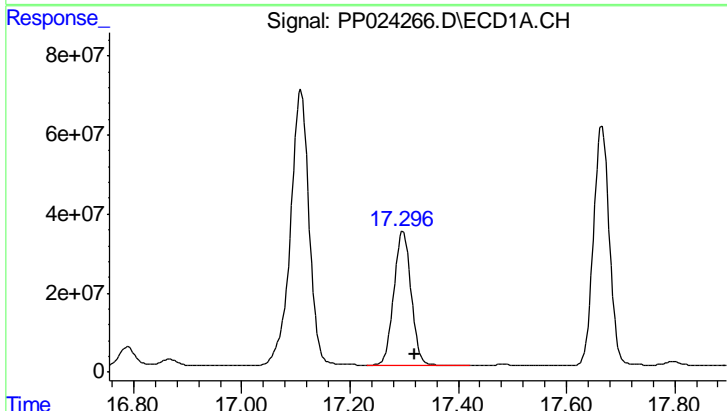
R.T.: 15.832 min
 Delta R.T.: -0.021 min
 Response: 170807806
 Conc: 434.43 ng/ml

Instrument :
 ECD_O
 ClientSampleId :
 PB107056BS



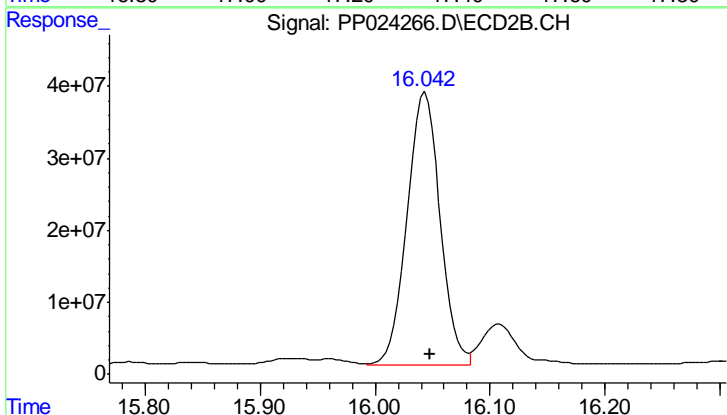
#13 2,4-DB

R.T.: 15.643 min
 Delta R.T.: -0.005 min
 Response: 190558024
 Conc: 440.79 ng/ml



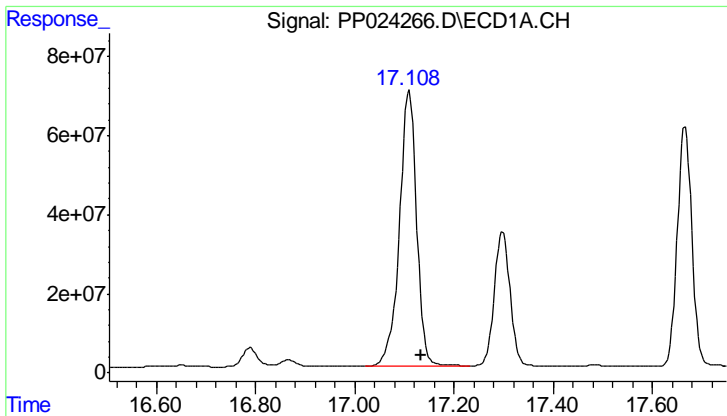
#14 DINOSEB

R.T.: 17.298 min
 Delta R.T.: -0.021 min
 Response: 756226336
 Conc: 329.48 ng/ml



#14 DINOSEB

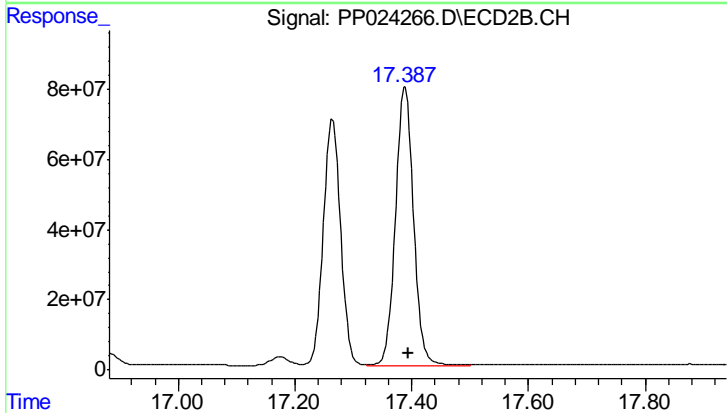
R.T.: 16.043 min
 Delta R.T.: -0.005 min
 Response: 771582436
 Conc: 313.67 ng/ml



#15 Picloram

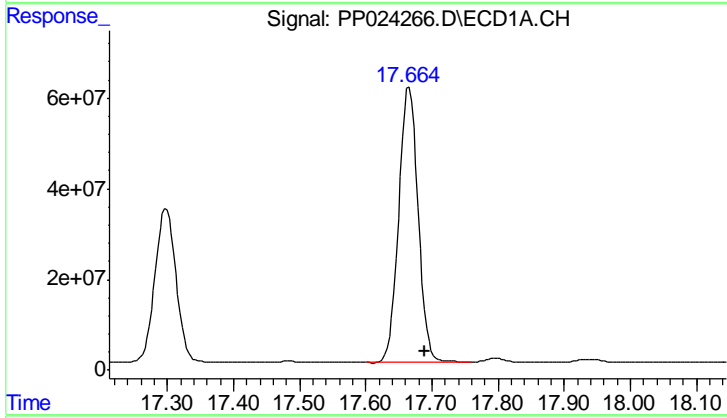
R.T.: 17.109 min
 Delta R.T.: -0.023 min
 Response: 1678702304
 Conc: 344.80 ng/ml

Instrument :
 ECD_O
 ClientSampled :
 PB107056BS



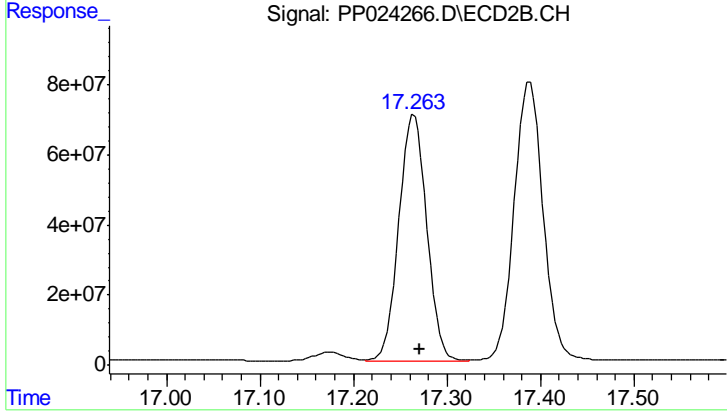
#15 Picloram

R.T.: 17.389 min
 Delta R.T.: -0.006 min
 Response: 1719368256
 Conc: 345.18 ng/ml



#16 DCPA

R.T.: 17.666 min
 Delta R.T.: -0.024 min
 Response: 1241622269
 Conc: 316.65 ng/ml



#16 DCPA

R.T.: 17.265 min
 Delta R.T.: -0.006 min
 Response: 1460386221
 Conc: 335.65 ng/ml