

Data Path : Z:\pestpcbsrv\HPCHEM1\ECD_0\Data\P0030620\
 Data File : P0066988.D
 Signal(s) : Signal #1: ECD1A.CH Signal #2: ECD2B.CH
 Acq On : 06 Mar 2020 15:35
 Operator : DD\AJ
 Sample : L1366-04
 Misc :
 ALS Vial : 10 Sample Multiplier: 1

Instrument :
 ECD_0
ClientSampled :
 03-05-D

Manual Integrations
APPROVED
 Sohil
 3/11/2020 10:55:15 AM

Integration File signal 1: autoint1.e
 Integration File signal 2: autoint2.e
 Quant Time: Mar 06 17:02:49 2020
 Quant Method : Z:\pestpcbsrv\HPCHEM1\ECD_0\methods\P0030420.M
 Quant Title : GC EXTRACTABLES
 QLast Update : Wed Mar 04 13:48:03 2020
 Response via : Initial Calibration
 Integrator: ChemStation 6890 Scale Mode: Small noise peaks clipped

Volume Inj. : 2 µl
 Signal #1 Phase : ZB-MR1 Signal #2 Phase: ZB-MR2
 Signal #1 Info : 30Mx0.32mmx 0.50µ Signal #2 Info : 30M x 0.32mm x 0.25µm

Compound	RT#1	RT#2	Resp#1	Resp#2	ng/ml	ng/ml

System Monitoring Compounds						
1) SA Tetrachlo...	4.118	3.402	1189172	992294	22.307m	21.403
2) SA Decachlor...	9.586	8.282	966398	1001974	17.552	19.380

Target Compounds

(f)=RT Delta > 1/2 Window (#)=Amounts differ by > 25% (m)=manual int.

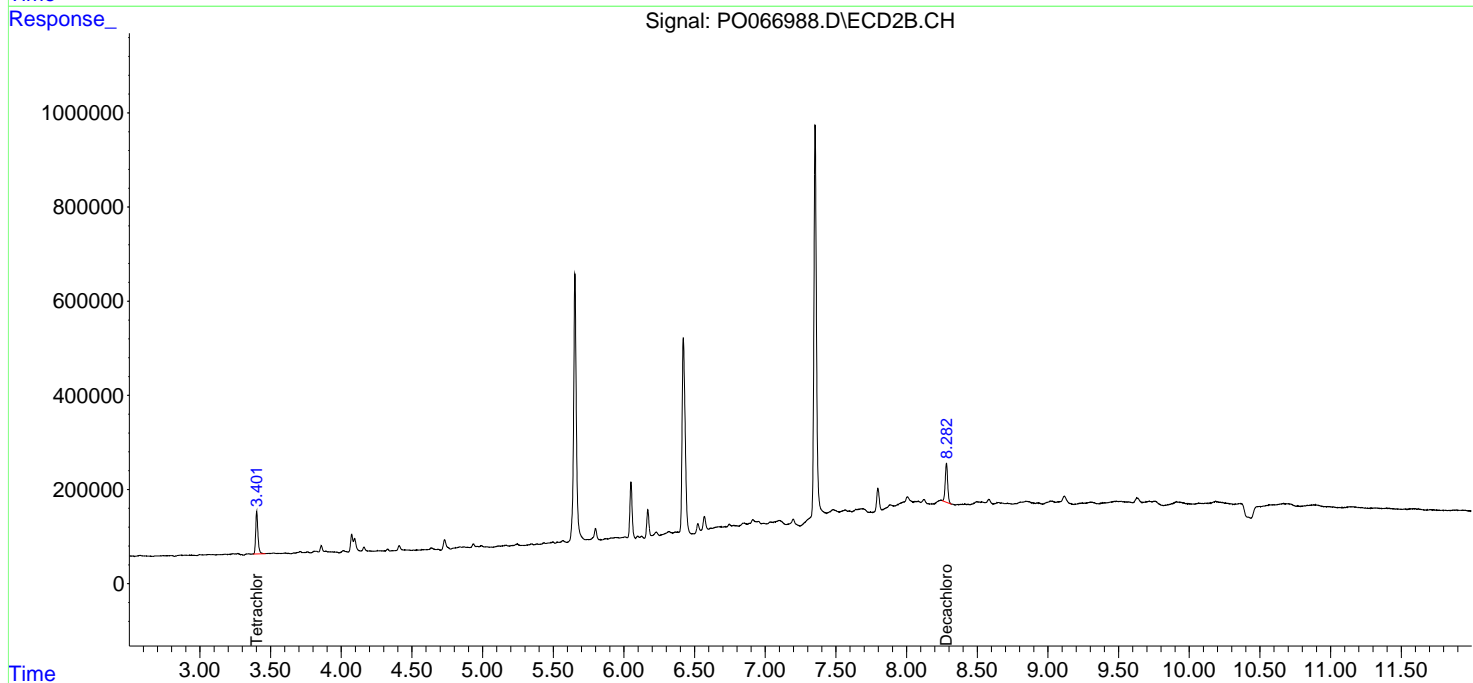
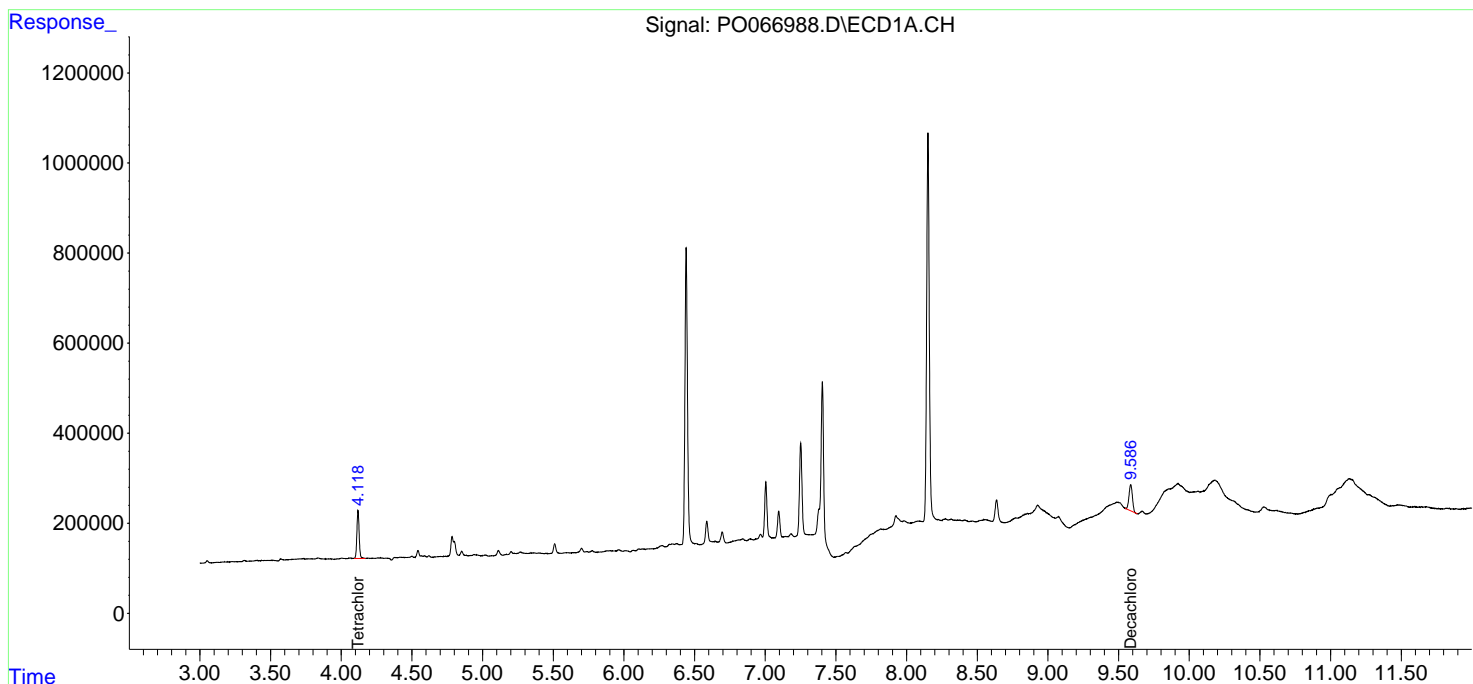
Data Path : Z:\pestpcbsrv\HPCHEM1\ECD_0\Data\P0030620\
 Data File : P0066988.D
 Signal(s) : Signal #1: ECD1A.CH Signal #2: ECD2B.CH
 Acq On : 06 Mar 2020 15:35
 Operator : DD\AJ
 Sample : L1366-04
 Misc :
 ALS Vial : 10 Sample Multiplier: 1

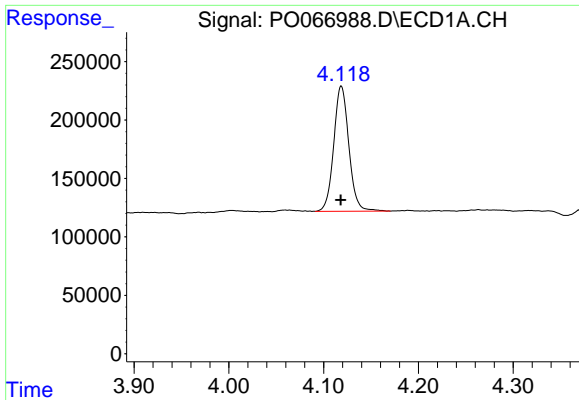
Instrument :
 ECD_O
ClientSampled :
 03-05-D

Manual Integrations
APPROVED
 Sohil
 3/11/2020 10:55:15 AM

Integration File signal 1: autoint1.e
 Integration File signal 2: autoint2.e
 Quant Time: Mar 06 17:02:49 2020
 Quant Method : Z:\pestpcbsrv\HPCHEM1\ECD_0\methods\P0030420.M
 Quant Title : GC EXTRACTABLES
 QLast Update : Wed Mar 04 13:48:03 2020
 Response via : Initial Calibration
 Integrator: ChemStation 6890 Scale Mode: Small noise peaks clipped

Volume Inj. : 2 µl
 Signal #1 Phase : ZB-MR1 Signal #2 Phase: ZB-MR2
 Signal #1 Info : 30Mx0.32mmx 0.50µ Signal #2 Info : 30M x 0.32mm x 0.25µm

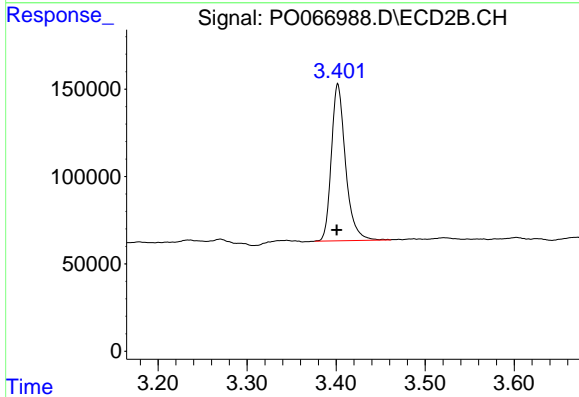




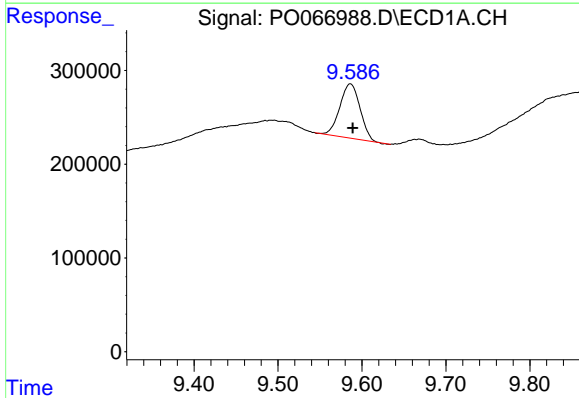
#1 Tetrachloro-m-xylene
 R.T.: 4.118 min
 Delta R.T.: 0.000 min
 Response: 1189172
 Conc: 22.31 ng/ml m

Instrument :
 ECD_O
 ClientSampled :
 03-05-D

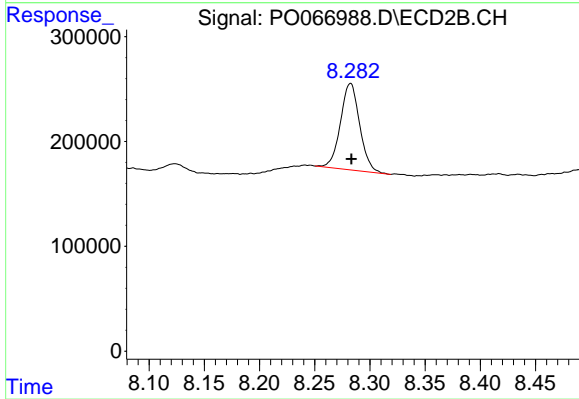
Manual Integrations
 APPROVED
 Sohil
 3/11/2020 10:55:15 AM



#1 Tetrachloro-m-xylene
 R.T.: 3.402 min
 Delta R.T.: 0.001 min
 Response: 992294
 Conc: 21.40 ng/ml



#2 Decachlorobiphenyl
 R.T.: 9.586 min
 Delta R.T.: -0.003 min
 Response: 966398
 Conc: 17.55 ng/ml



#2 Decachlorobiphenyl
 R.T.: 8.282 min
 Delta R.T.: 0.000 min
 Response: 1001974
 Conc: 19.38 ng/ml