

Data Path : P:\HPCHEM1\ECD_O\Data\PO030818\
 Data File : PO042849.D
 Signal(s) : Signal #1: ECD1A.CH Signal #2: ECD2B.CH
 Acq On : 08 Mar 2018 15:32
 Operator : SM/UA
 Sample : J1723-19MS
 Misc :
 ALS Vial : 10 Sample Multiplier: 1

Instrument :
 ECD_O
ClientSampled :
 SP-45MS

Manual Integrations
APPROVED
 ugo
 3/9/2018 10:47:28 AM

Integration File signal 1: autoint1.e
 Integration File signal 2: autoint2.e
 Quant Time: Mar 09 00:56:10 2018
 Quant Method : P:\HPCHEM1\ECD_O\methods\PO022118.M
 Quant Title : GC EXTRACTABLES
 QLast Update : Mon Feb 26 14:24:10 2018
 Response via : Initial Calibration
 Integrator: ChemStation 6890 Scale Mode: Small noise peaks clipped

Volume Inj. : 2 µl
 Signal #1 Phase : ZB-MR1 Signal #2 Phase: ZB-MR2
 Signal #1 Info : 30Mx0.32mmx 0.50µ Signal #2 Info : 30M x 0.32mm x 0.25µm

Compound	RT#1	RT#2	Resp#1	Resp#2	ng/ml	ng/ml

System Monitoring Compounds						
1) SA Tetrachlo...	4.095	3.348	4406404	5740659	17.788	15.535
2) SA Decachlor...	9.470	8.127	2555713	3135862	10.112m	8.132
Target Compounds						
3) L1 AR-1016-1	4.959	4.162	2146293	1606435	319.588m	169.708 #
4) L1 AR-1016-2	5.299	4.598	1686903	1716551	188.375	209.488
5) L1 AR-1016-3	5.391	4.639	1636546	3114621	226.507	299.788 #
6) L1 AR-1016-4	5.815	4.800	1335917	1852423	188.036m	166.808m
7) L1 AR-1016-5	6.046	5.139	2934975	4438781	407.702m	419.926m
31) L7 AR-1260-1	6.776	5.792	3075777	4556882	223.571	188.752
32) L7 AR-1260-2	7.026	5.980	5023699	6642355	274.644	197.736 #
33) L7 AR-1260-3	7.304	6.123	4396804	4823676	211.603m	169.450
34) L7 AR-1260-4	7.381	6.295	2272267	5803320	153.520	169.751
35) L7 AR-1260-5	7.903	6.826	4933283	6840643	145.938m	101.080 #

(f)=RT Delta > 1/2 Window (#)=Amounts differ by > 25% (m)=manual int.

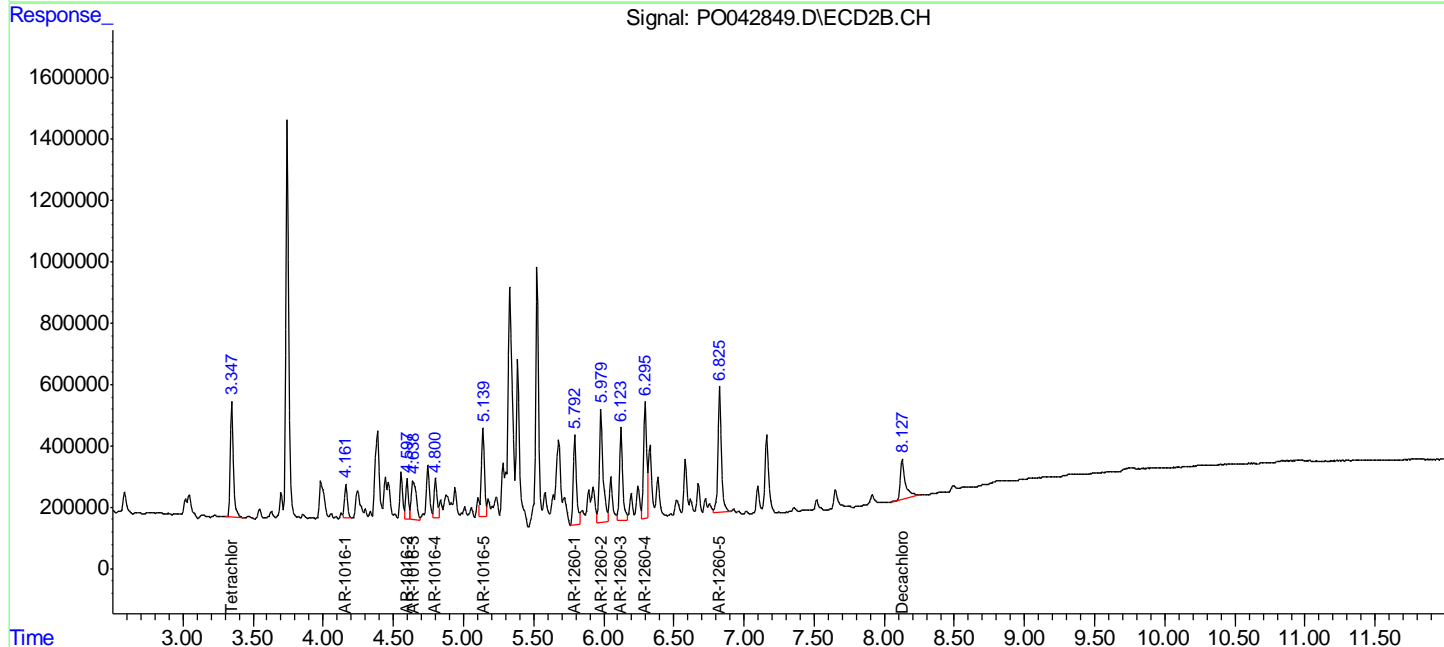
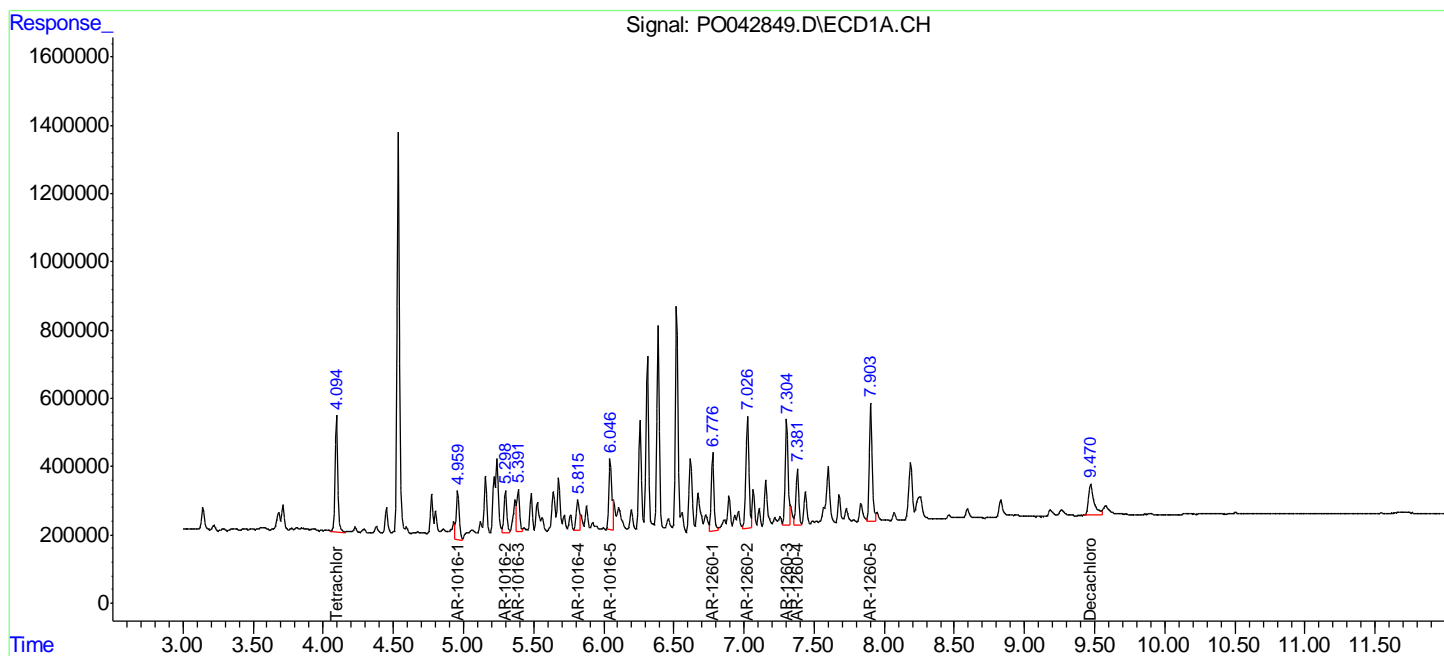
Data Path : P:\HPCHEM1\ECD_O\Data\PO030818\
 Data File : PO042849.D
 Signal(s) : Signal #1: ECD1A.CH Signal #2: ECD2B.CH
 Acq On : 08 Mar 2018 15:32
 Operator : SM/UA
 Sample : J1723-19MS
 Misc :
 ALS Vial : 10 Sample Multiplier: 1

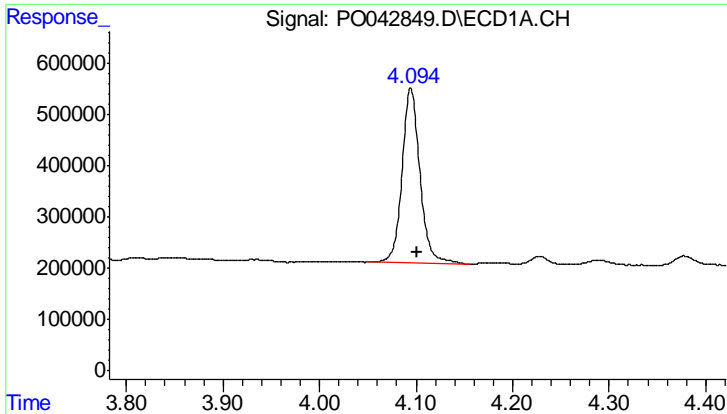
Instrument :
 ECD_O
Client Sampled :
 SP-45MS

Manual Integrations
APPROVED
 ugo
 3/9/2018 10:47:28 AM

Integration File signal 1: autoint1.e
 Integration File signal 2: autoint2.e
 Quant Time: Mar 09 00:56:10 2018
 Quant Method : P:\HPCHEM1\ECD_O\methods\PO022118.M
 Quant Title : GC EXTRACTABLES
 QLast Update : Mon Feb 26 14:24:10 2018
 Response via : Initial Calibration
 Integrator: ChemStation 6890 Scale Mode: Small noise peaks clipped

Volume Inj. : 2 µl
 Signal #1 Phase : ZB-MR1 Signal #2 Phase: ZB-MR2
 Signal #1 Info : 30Mx0.32mmx 0.50µ Signal #2 Info : 30M x 0.32mm x 0.25µm



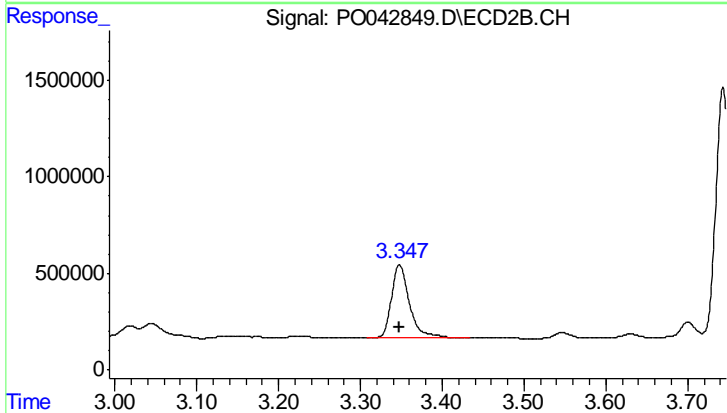


#1 Tetrachloro-m-xylene

R.T.: 4.095 min
 Delta R.T.: -0.007 min
 Response: 4406404
 Conc: 17.79 ng/ml

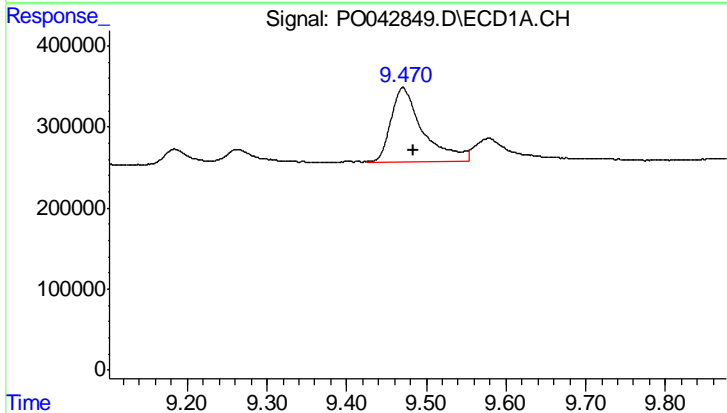
Instrument :
 ECD_O
 ClientSampled :
 SP-45MS

Manual Integrations
 APPROVED
 ugo
 3/9/2018 10:47:28 AM



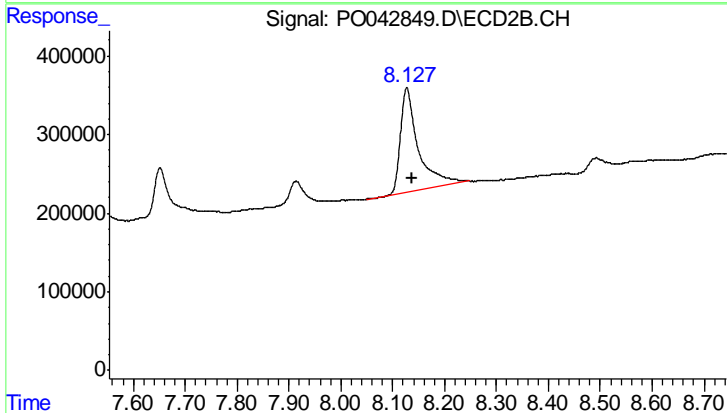
#1 Tetrachloro-m-xylene

R.T.: 3.348 min
 Delta R.T.: 0.000 min
 Response: 5740659
 Conc: 15.53 ng/ml



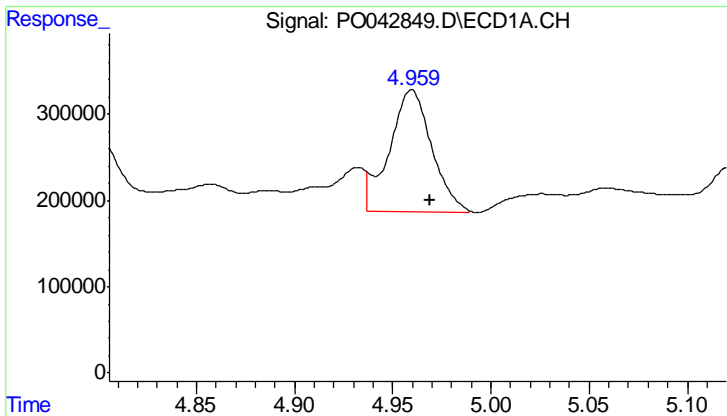
#2 Decachlorobiphenyl

R.T.: 9.470 min
 Delta R.T.: -0.014 min
 Response: 2555713
 Conc: 10.11 ng/ml m



#2 Decachlorobiphenyl

R.T.: 8.127 min
 Delta R.T.: -0.010 min
 Response: 3135862
 Conc: 8.13 ng/ml



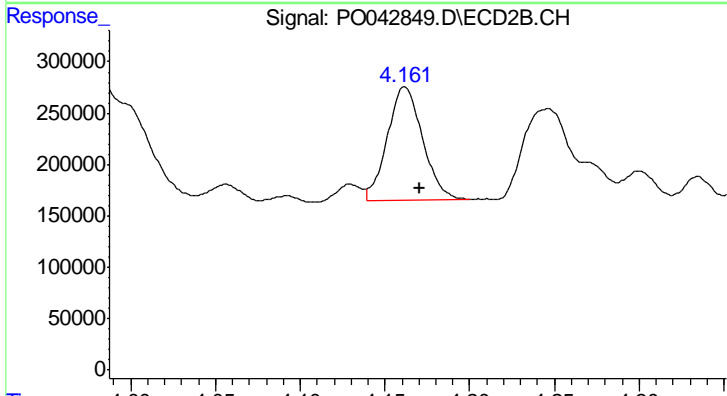
#3 AR-1016-1

R.T.: 4.959 min
 Delta R.T.: -0.009 min
 Response: 2146293
 Conc: 319.59 ng/ml

Instrument :
 ECD_O
 ClientSampled :
 SP-45MS

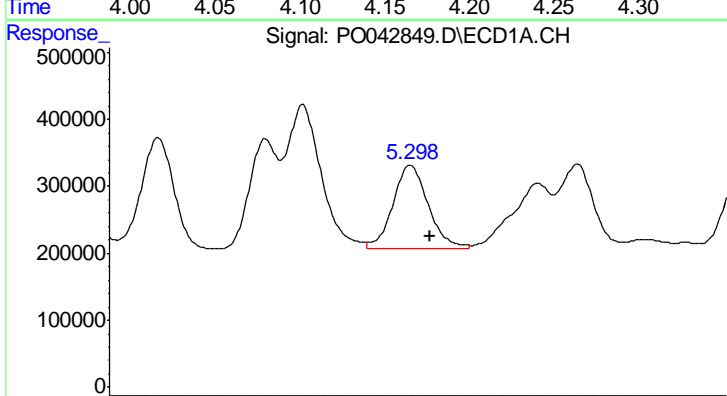
Manual Integrations
 APPROVED

ugo
 3/9/2018 10:47:28 AM



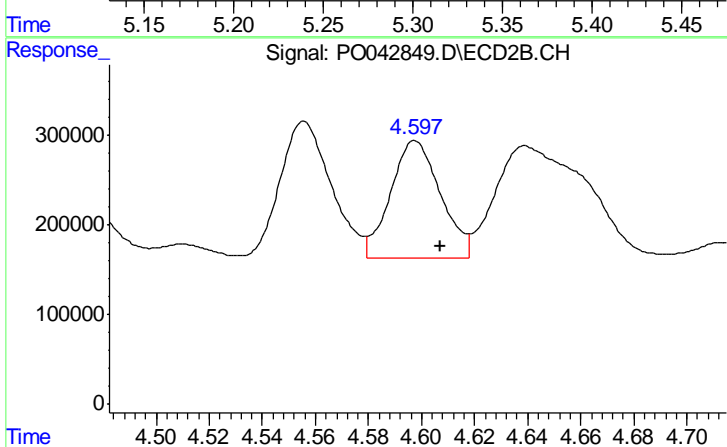
#3 AR-1016-1

R.T.: 4.162 min
 Delta R.T.: -0.009 min
 Response: 1606435
 Conc: 169.71 ng/ml



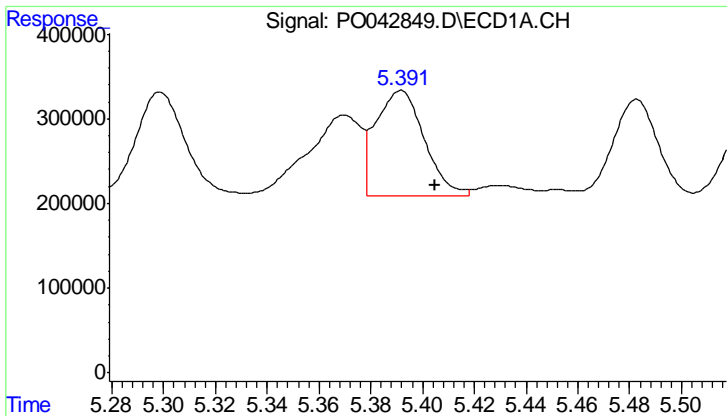
#4 AR-1016-2

R.T.: 5.299 min
 Delta R.T.: -0.011 min
 Response: 1686903
 Conc: 188.38 ng/ml



#4 AR-1016-2

R.T.: 4.598 min
 Delta R.T.: -0.010 min
 Response: 1716551
 Conc: 209.49 ng/ml



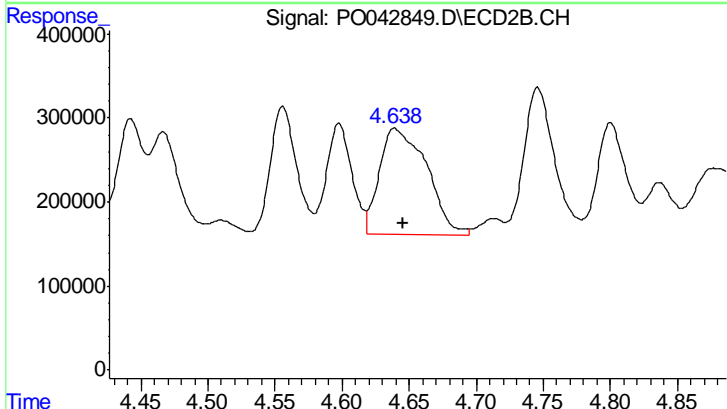
#5 AR-1016-3

R.T.: 5.391 min
 Delta R.T.: -0.013 min
 Response: 1636546
 Conc: 226.51 ng/ml

Instrument :
 ECD_O
 ClientSampled :
 SP-45MS

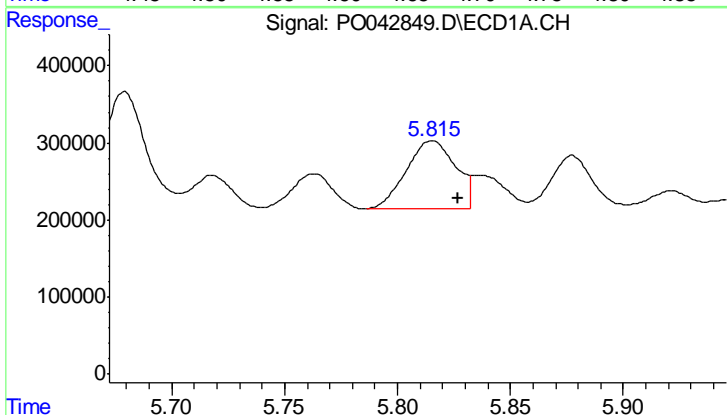
Manual Integrations
 APPROVED

ugo
 3/9/2018 10:47:28 AM



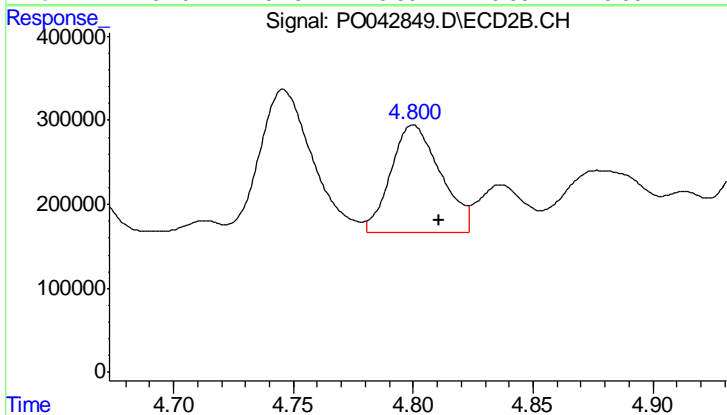
#5 AR-1016-3

R.T.: 4.639 min
 Delta R.T.: -0.007 min
 Response: 3114621
 Conc: 299.79 ng/ml



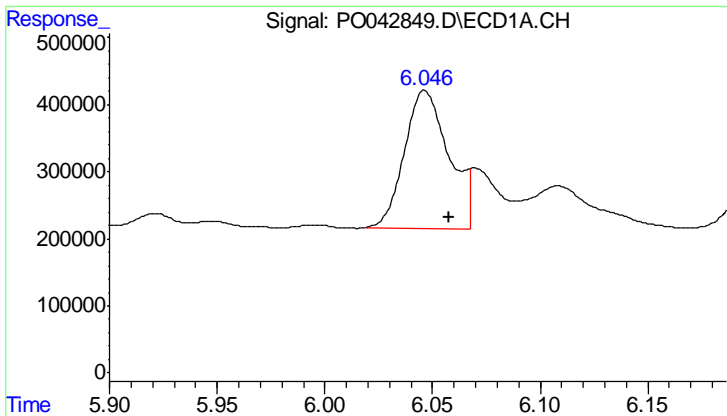
#6 AR-1016-4

R.T.: 5.815 min
 Delta R.T.: -0.012 min
 Response: 1335917
 Conc: 188.04 ng/ml m



#6 AR-1016-4

R.T.: 4.800 min
 Delta R.T.: -0.011 min
 Response: 1852423
 Conc: 166.81 ng/ml m



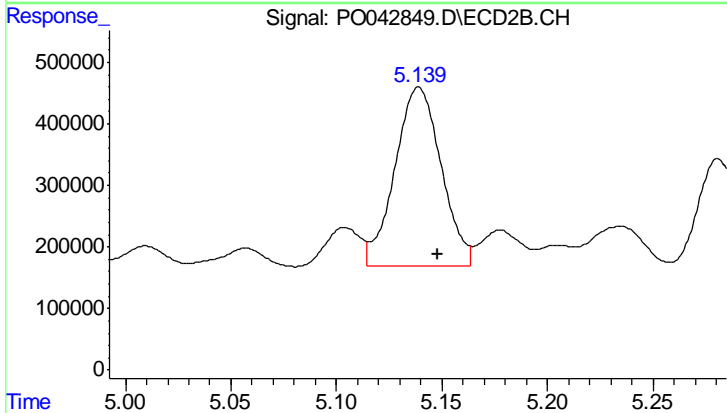
#7 AR-1016-5

R.T.: 6.046 min
 Delta R.T.: -0.012 min
 Response: 2934975
 Conc: 407.70 ng/ml

Instrument :
 ECD_O
 ClientSampled :
 SP-45MS

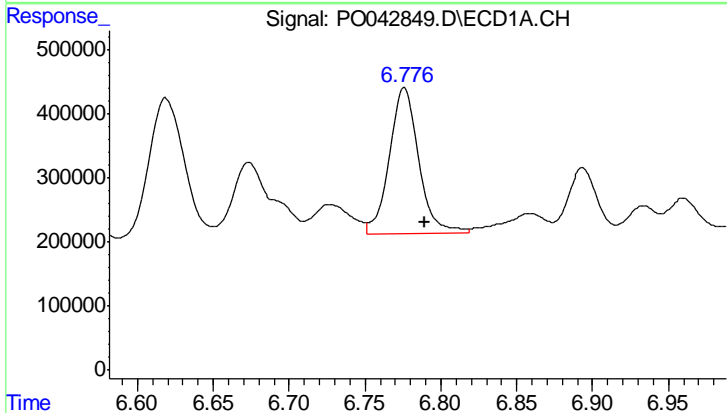
Manual Integrations
 APPROVED

ugo
 3/9/2018 10:47:28 AM



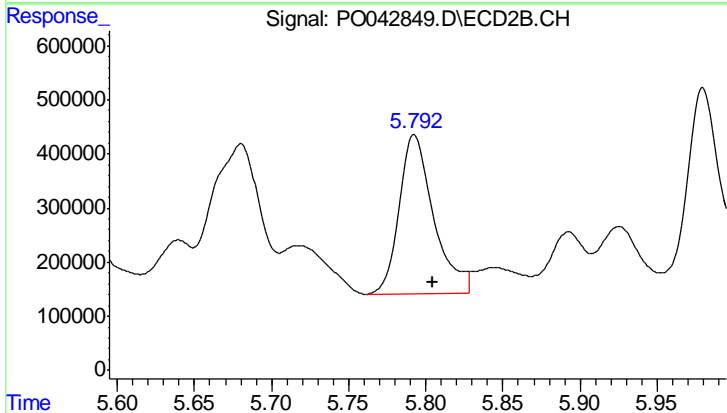
#7 AR-1016-5

R.T.: 5.139 min
 Delta R.T.: -0.009 min
 Response: 4438781
 Conc: 419.93 ng/ml m



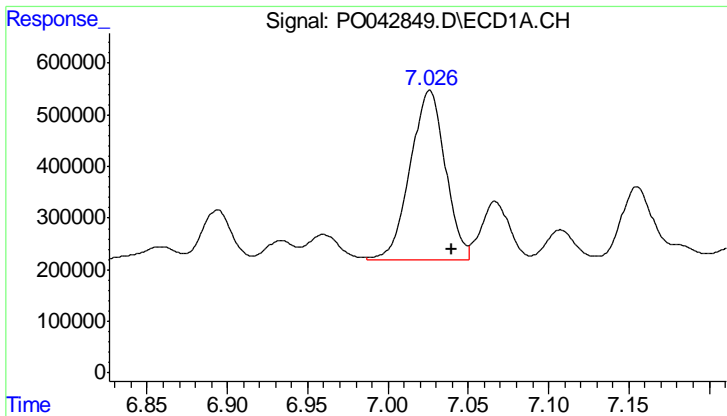
#31 AR-1260-1

R.T.: 6.776 min
 Delta R.T.: -0.013 min
 Response: 3075777
 Conc: 223.57 ng/ml



#31 AR-1260-1

R.T.: 5.792 min
 Delta R.T.: -0.012 min
 Response: 4556882
 Conc: 188.75 ng/ml



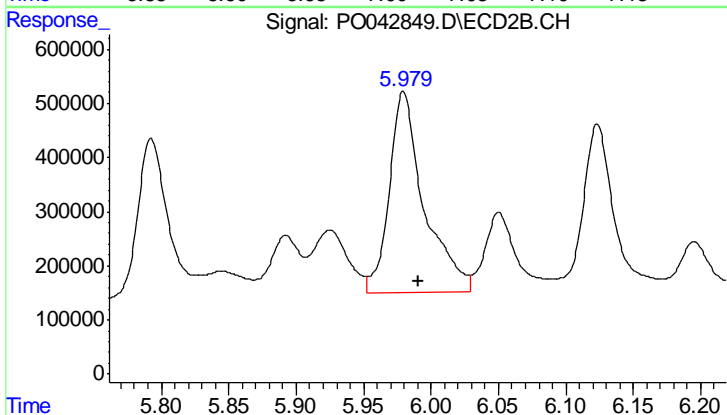
#32 AR-1260-2

R.T.: 7.026 min
 Delta R.T.: -0.014 min
 Response: 5023699
 Conc: 274.64 ng/ml

Instrument :
 ECD_O
 ClientSampled :
 SP-45MS

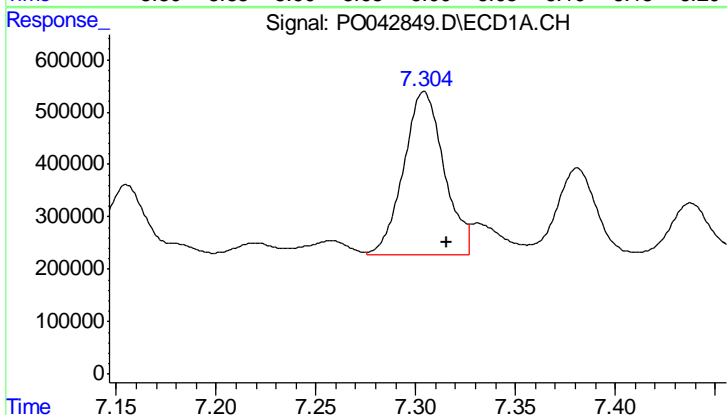
Manual Integrations
 APPROVED

ugo
 3/9/2018 10:47:28 AM



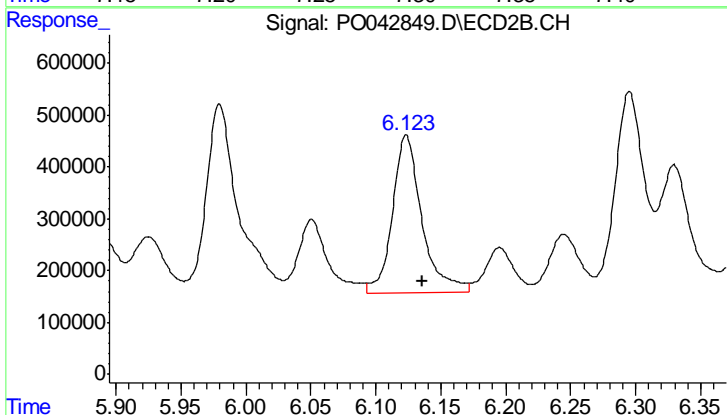
#32 AR-1260-2

R.T.: 5.980 min
 Delta R.T.: -0.011 min
 Response: 6642355
 Conc: 197.74 ng/ml



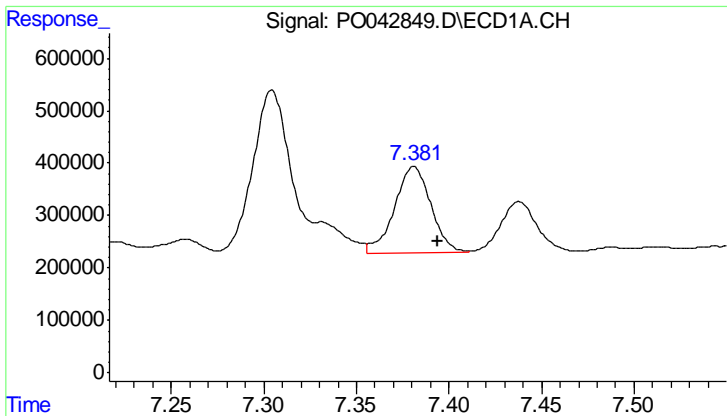
#33 AR-1260-3

R.T.: 7.304 min
 Delta R.T.: -0.012 min
 Response: 4396804
 Conc: 211.60 ng/ml m



#33 AR-1260-3

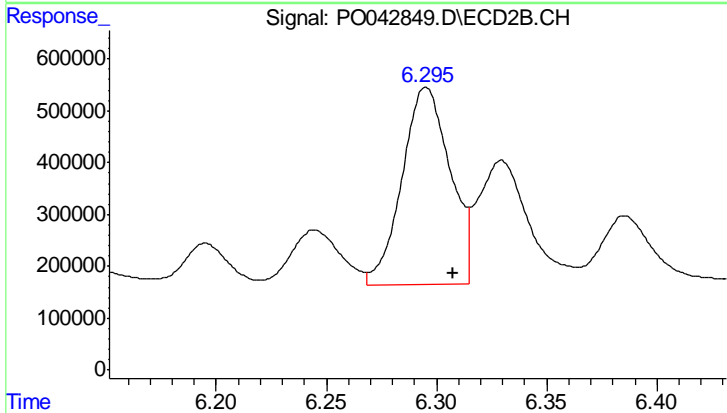
R.T.: 6.123 min
 Delta R.T.: -0.012 min
 Response: 4823676
 Conc: 169.45 ng/ml



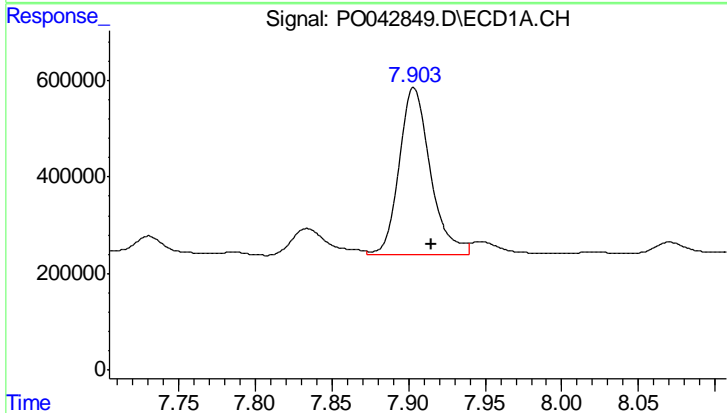
#34 AR-1260-4
 R.T.: 7.381 min
 Delta R.T.: -0.013 min
 Response: 2272267
 Conc: 153.52 ng/ml

Instrument :
 ECD_O
ClientSampled :
 SP-45MS

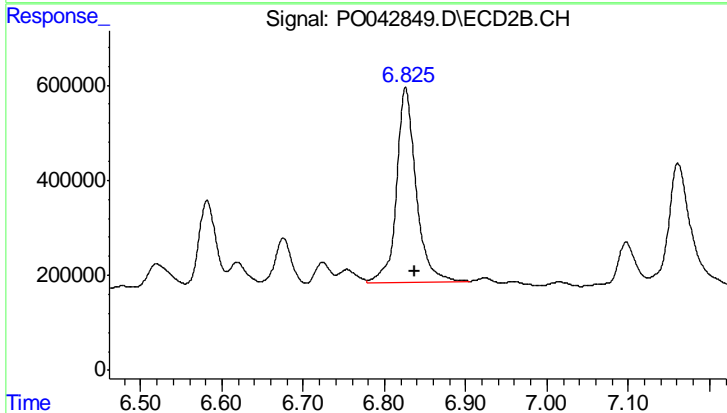
Manual Integrations
APPROVED
 ugo
 3/9/2018 10:47:28 AM



#34 AR-1260-4
 R.T.: 6.295 min
 Delta R.T.: -0.012 min
 Response: 5803320
 Conc: 169.75 ng/ml



#35 AR-1260-5
 R.T.: 7.903 min
 Delta R.T.: -0.012 min
 Response: 4933283
 Conc: 145.94 ng/ml m



#35 AR-1260-5
 R.T.: 6.826 min
 Delta R.T.: -0.011 min
 Response: 6840643
 Conc: 101.08 ng/ml