

Data Path : P:\HPCHEM1\ECD_O\Data\PO030818\
 Data File : PO042852.D
 Signal(s) : Signal #1: ECD1A.CH Signal #2: ECD2B.CH
 Acq On : 08 Mar 2018 16:52
 Operator : SM/UA
 Sample : I.BLK
 Misc :
 ALS Vial : 2 Sample Multiplier: 1

Instrument :
 ECD_O
ClientSampleId :
 I.BLK

Manual Integrations
APPROVED
 ugo
 3/9/2018 10:47:17 AM

Integration File signal 1: autoint1.e
 Integration File signal 2: autoint2.e
 Quant Time: Mar 09 01:01:23 2018
 Quant Method : P:\HPCHEM1\ECD_O\methods\PO022118.M
 Quant Title : GC EXTRACTABLES
 QLast Update : Mon Feb 26 14:24:10 2018
 Response via : Initial Calibration
 Integrator: ChemStation 6890 Scale Mode: Small noise peaks clipped

Volume Inj. : 2 µl
 Signal #1 Phase : ZB-MR1 Signal #2 Phase: ZB-MR2
 Signal #1 Info : 30Mx0.32mmx 0.50µ Signal #2 Info : 30M x 0.32mm x 0.25µm

Compound	RT#1	RT#2	Resp#1	Resp#2	ng/ml	ng/ml

System Monitoring Compounds						
1) SA Tetrachlo...	4.101	3.346	5892674	7901542	23.788	21.382
2) SA Decachlor...	9.477	8.126	4078102	4409300	16.136m	11.434m#

Target Compounds

(f)=RT Delta > 1/2 Window (#)=Amounts differ by > 25% (m)=manual int.

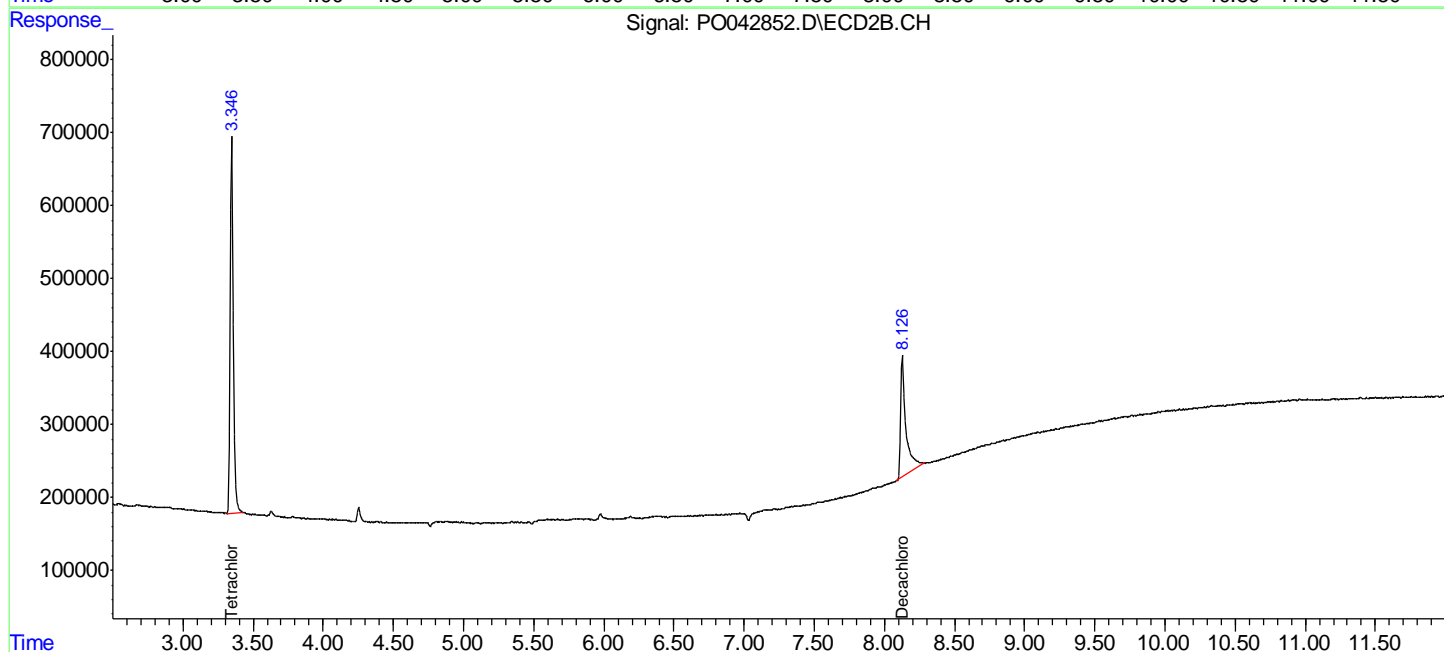
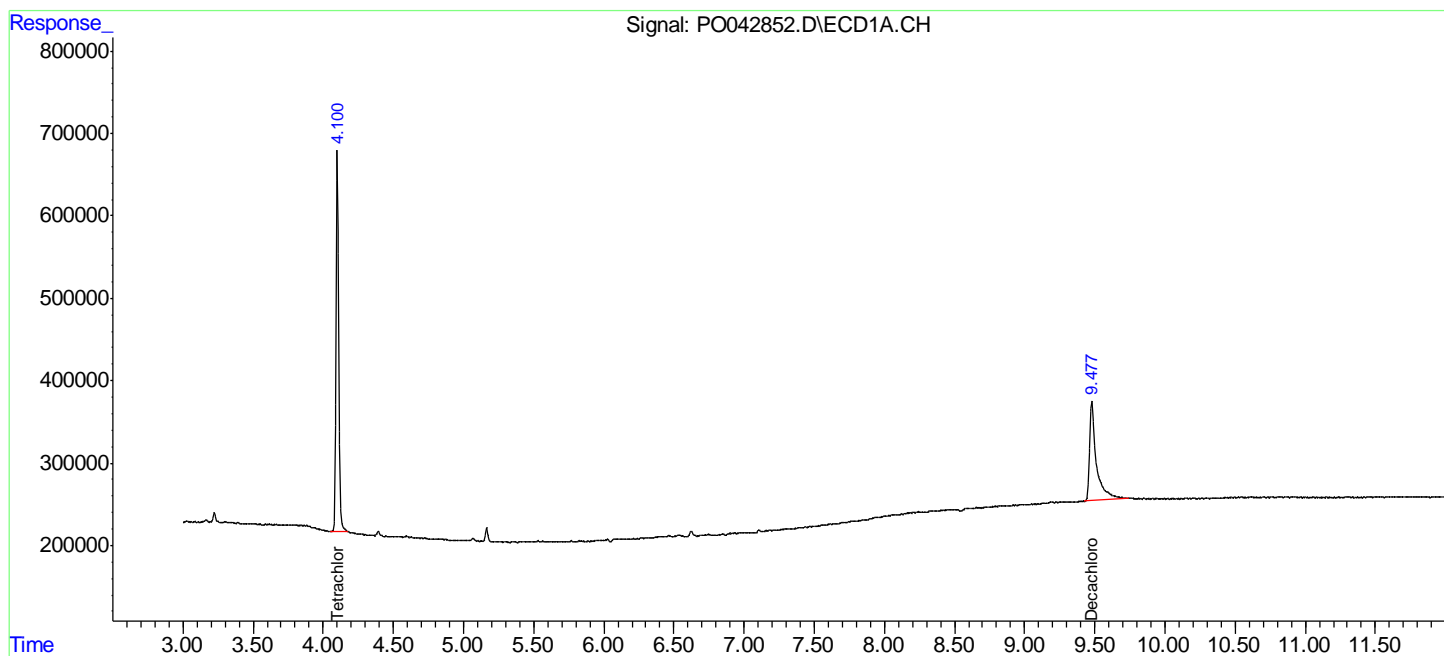
Data Path : P:\HPCHEM1\ECD_O\Data\PO030818\
 Data File : PO042852.D
 Signal(s) : Signal #1: ECD1A.CH Signal #2: ECD2B.CH
 Acq On : 08 Mar 2018 16:52
 Operator : SM/UA
 Sample : I.BLK
 Misc :
 ALS Vial : 2 Sample Multiplier: 1

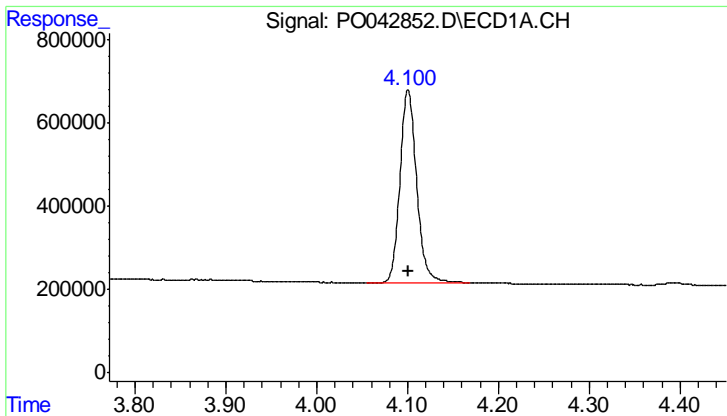
Instrument :
 ECD_O
 ClientSampled :
 I.BLK

Manual Integrations
APPROVED
 ugo
 3/9/2018 10:47:17 AM

Integration File signal 1: autoint1.e
 Integration File signal 2: autoint2.e
 Quant Time: Mar 09 01:01:23 2018
 Quant Method : P:\HPCHEM1\ECD_O\methods\PO022118.M
 Quant Title : GC EXTRACTABLES
 QLast Update : Mon Feb 26 14:24:10 2018
 Response via : Initial Calibration
 Integrator: ChemStation 6890 Scale Mode: Small noise peaks clipped

Volume Inj. : 2 µl
 Signal #1 Phase : ZB-MR1 Signal #2 Phase: ZB-MR2
 Signal #1 Info : 30Mx0.32mmx 0.50µ Signal #2 Info : 30M x 0.32mm x 0.25µm





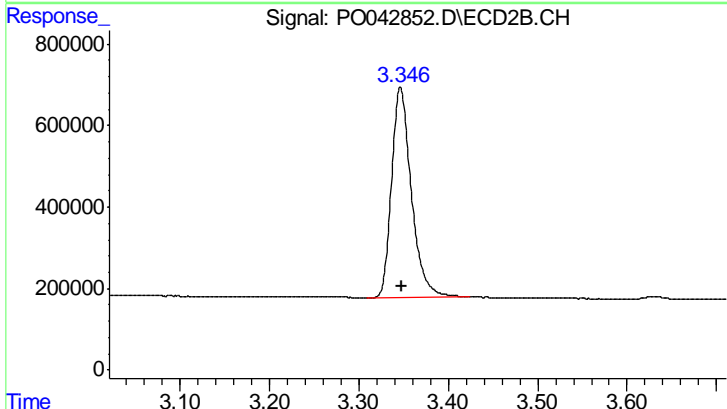
#1 Tetrachloro-m-xylene

R.T.: 4.101 min
 Delta R.T.: 0.000 min
 Response: 5892674
 Conc: 23.79 ng/ml

Instrument :
 ECD_O
 ClientSampled :
 I.BLK

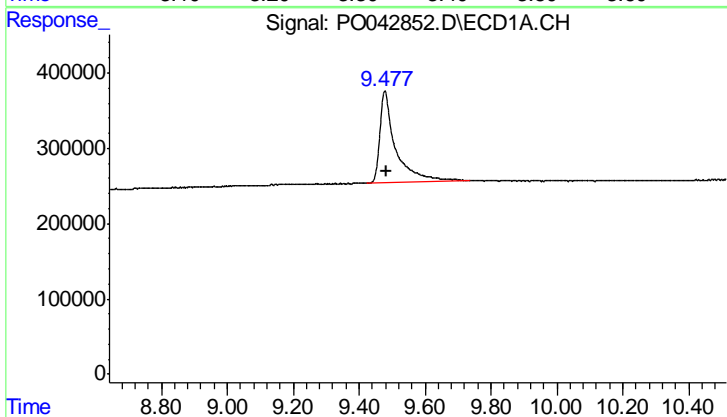
Manual Integrations
 APPROVED

ugo
 3/9/2018 10:47:17 AM



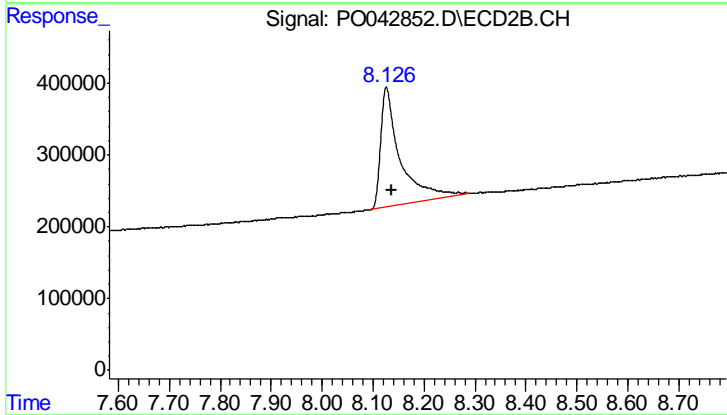
#1 Tetrachloro-m-xylene

R.T.: 3.346 min
 Delta R.T.: -0.001 min
 Response: 7901542
 Conc: 21.38 ng/ml



#2 Decachlorobiphenyl

R.T.: 9.477 min
 Delta R.T.: -0.007 min
 Response: 4078102
 Conc: 16.14 ng/ml m



#2 Decachlorobiphenyl

R.T.: 8.126 min
 Delta R.T.: -0.010 min
 Response: 4409300
 Conc: 11.43 ng/ml m