

Data Path : P:\HPCHEM1\ECD_O\Data\PO030918\
 Data File : PO042874.D
 Signal(s) : Signal #1: ECD1A.CH Signal #2: ECD2B.CH
 Acq On : 09 Mar 2018 15:06
 Operator : SM/UA
 Sample : PB107098BL
 Misc :
 ALS Vial : 4 Sample Multiplier: 1

Instrument :
 ECD_O
 ClientSampleID :
 PB107098BL

Integration File signal 1: autoint1.e
 Integration File signal 2: autoint2.e
 Quant Time: Mar 09 15:18:32 2018
 Quant Method : P:\HPCHEM1\ECD_O\methods\PO022118.M
 Quant Title : GC EXTRACTABLES
 QLast Update : Mon Feb 26 14:24:10 2018
 Response via : Initial Calibration
 Integrator: ChemStation 6890 Scale Mode: Small noise peaks clipped

Volume Inj. : 2 µl
 Signal #1 Phase : ZB-MR1 Signal #2 Phase: ZB-MR2
 Signal #1 Info : 30Mx0.32mmx 0.50µ Signal #2 Info : 30M x 0.32mm x 0.25µm

Compound	RT#1	RT#2	Resp#1	Resp#2	ng/ml	ng/ml

System Monitoring Compounds						
1) SA Tetrachlo...	4.091	3.339	4715870	6734207	19.037	18.224
2) SA Decachlor...	9.460	8.116	4642971	6456514	18.371	16.743

Target Compounds

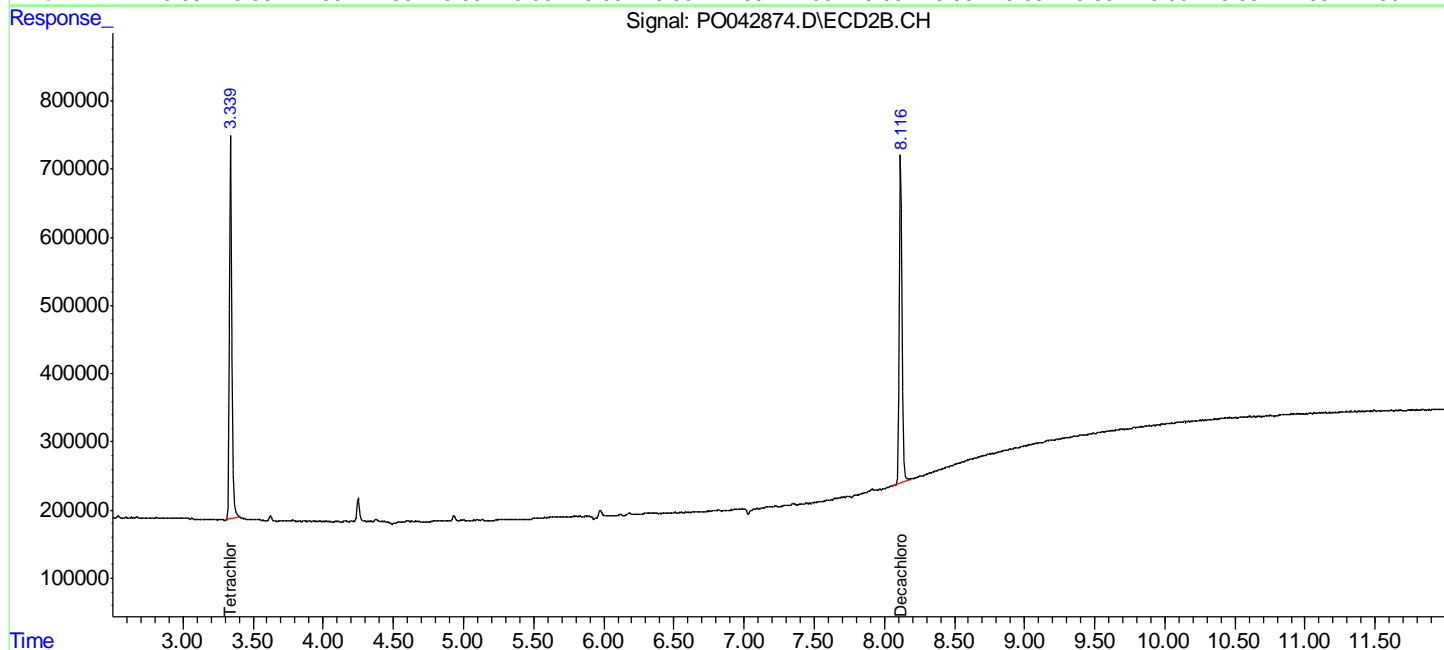
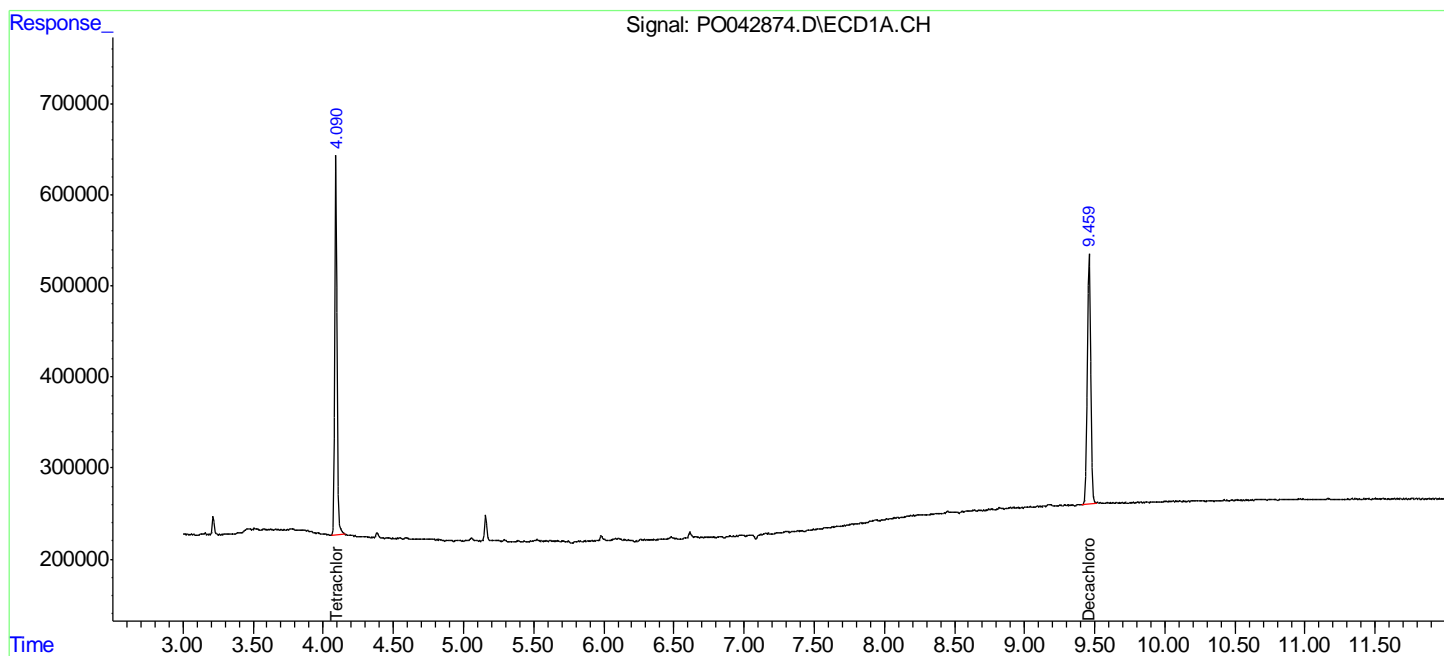
(f)=RT Delta > 1/2 Window (#)=Amounts differ by > 25% (m)=manual int.

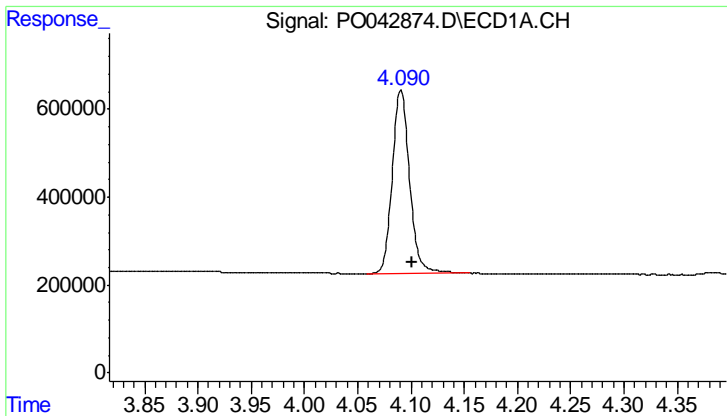
Data Path : P:\HPCHEM1\ECD_O\Data\PO030918\
 Data File : PO042874.D
 Signal(s) : Signal #1: ECD1A.CH Signal #2: ECD2B.CH
 Acq On : 09 Mar 2018 15:06
 Operator : SM/UA
 Sample : PB107098BL
 Misc :
 ALS Vial : 4 Sample Multiplier: 1

Instrument :
 ECD_O
 ClientSampled :
 PB107098BL

Integration File signal 1: autoint1.e
 Integration File signal 2: autoint2.e
 Quant Time: Mar 09 15:18:32 2018
 Quant Method : P:\HPCHEM1\ECD_O\methods\PO022118.M
 Quant Title : GC EXTRACTABLES
 QLast Update : Mon Feb 26 14:24:10 2018
 Response via : Initial Calibration
 Integrator: ChemStation 6890 Scale Mode: Small noise peaks clipped

Volume Inj. : 2 µl
 Signal #1 Phase : ZB-MR1 Signal #2 Phase: ZB-MR2
 Signal #1 Info : 30Mx0.32mmx 0.50µ Signal #2 Info : 30M x 0.32mm x 0.25µm

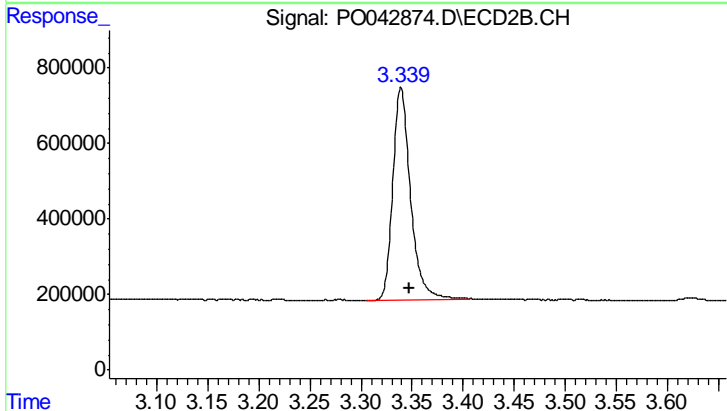




#1 Tetrachloro-m-xylene

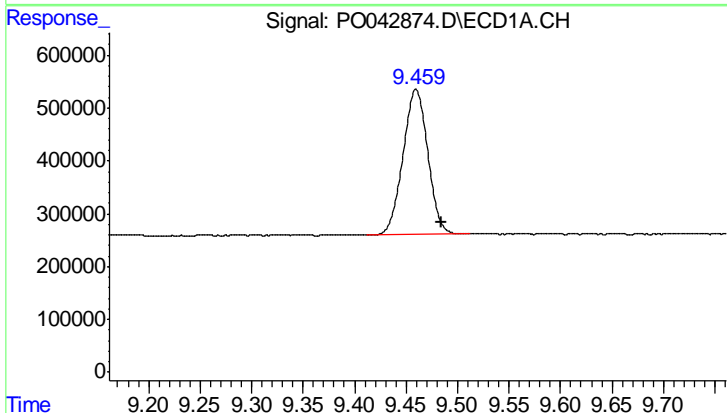
R.T.: 4.091 min
 Delta R.T.: -0.011 min
 Response: 4715870
 Conc: 19.04 ng/ml

Instrument :
 ECD_O
 ClientSampleId :
 PB107098BL



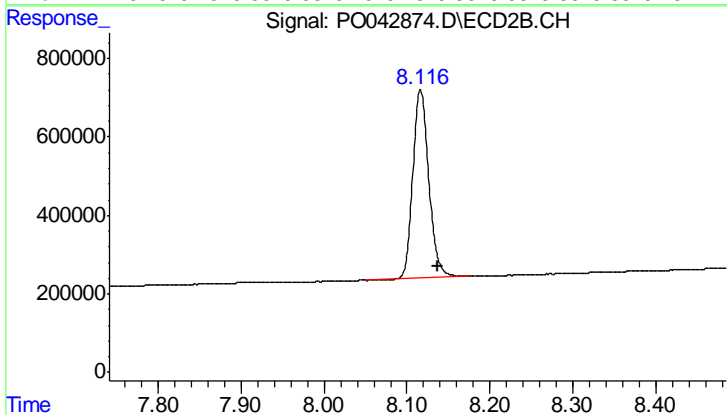
#1 Tetrachloro-m-xylene

R.T.: 3.339 min
 Delta R.T.: -0.009 min
 Response: 6734207
 Conc: 18.22 ng/ml



#2 Decachlorobiphenyl

R.T.: 9.460 min
 Delta R.T.: -0.025 min
 Response: 4642971
 Conc: 18.37 ng/ml



#2 Decachlorobiphenyl

R.T.: 8.116 min
 Delta R.T.: -0.020 min
 Response: 6456514
 Conc: 16.74 ng/ml