

Data Path : Z:\pestpcbsrv\HPCHEM1\ECD_0\Data\P0030920\
 Data File : P0067022.D
 Signal(s) : Signal #1: ECD1A.CH Signal #2: ECD2B.CH
 Acq On : 09 Mar 2020 13:55
 Operator : DD\AJ
 Sample : L1841-09
 Misc :
 ALS Vial : 19 Sample Multiplier: 1

Instrument :
 ECD_0
 ClientSampled :
 WEST-B

Manual Integrations
 APPROVED

Sohil
 3/11/2020 10:59:32 AM

Integration File signal 1: autoint1.e
 Integration File signal 2: autoint2.e
 Quant Time: Mar 10 12:39:50 2020
 Quant Method : Z:\pestpcbsrv\HPCHEM1\ECD_0\methods\P0030420.M
 Quant Title : GC EXTRACTABLES
 QLast Update : Wed Mar 04 13:48:03 2020
 Response via : Initial Calibration
 Integrator: ChemStation 6890 Scale Mode: Small noise peaks clipped

Volume Inj. : 2 µl
 Signal #1 Phase : ZB-MR1 Signal #2 Phase: ZB-MR2
 Signal #1 Info : 30Mx0.32mmx 0.50µ Signal #2 Info : 30M x 0.32mm x 0.25µm

Compound	RT#1	RT#2	Resp#1	Resp#2	ng/ml	ng/ml

System Monitoring Compounds						
1) SA Tetrachlo...	4.116	3.400	1077023	933721	20.204	20.140
2) SA Decachlor...	9.576	8.275	1058820	1017662	19.231m	19.684m
Target Compounds						
21) L5 AR-1248-1	5.262	4.451	59507	58057	63.876	83.795 #
22) L5 AR-1248-2	5.529	4.681	259069	209080	204.854	189.404
23) L5 AR-1248-3	5.729	4.722	152897	168787	101.437	149.602 #
24) L5 AR-1248-4	6.128	4.890	307292	203945	168.888	145.063
25) L5 AR-1248-5	6.165	5.274	321024	196174	182.413	142.285

(f)=RT Delta > 1/2 Window (#)=Amounts differ by > 25% (m)=manual int.

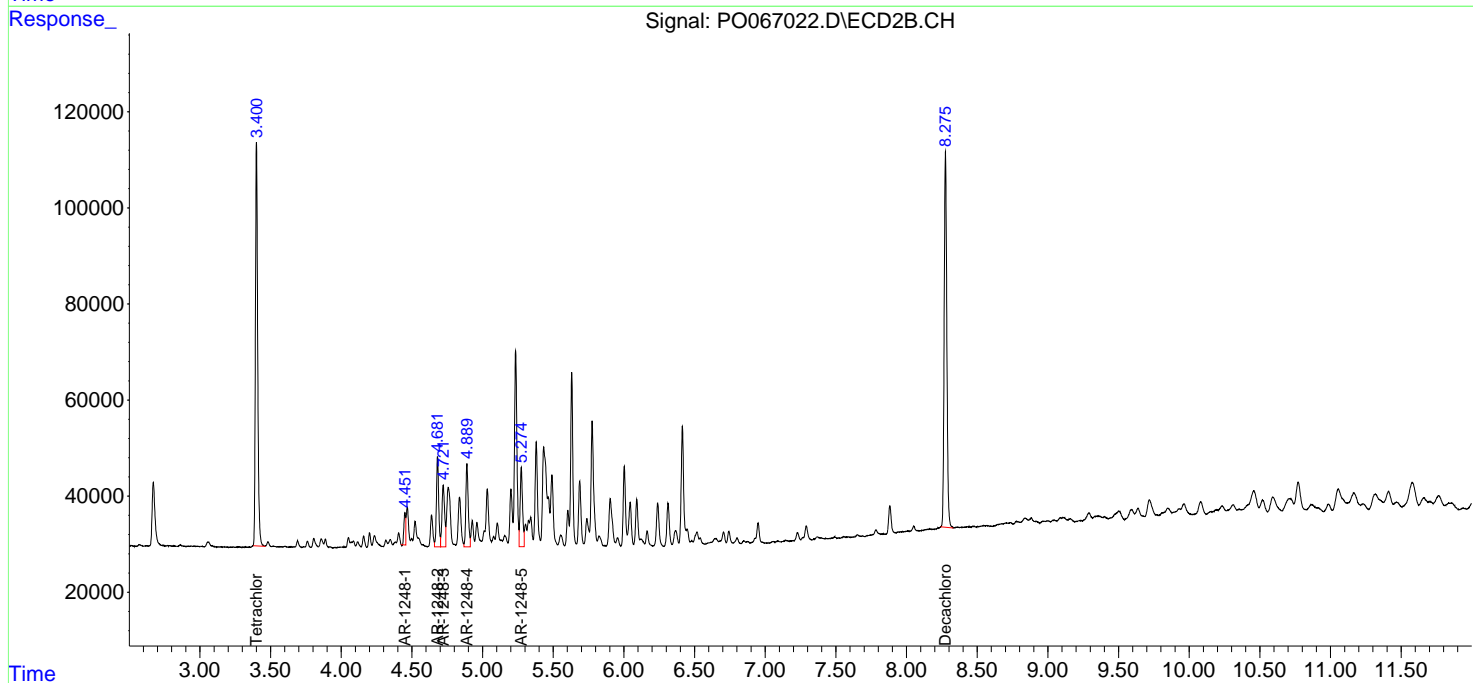
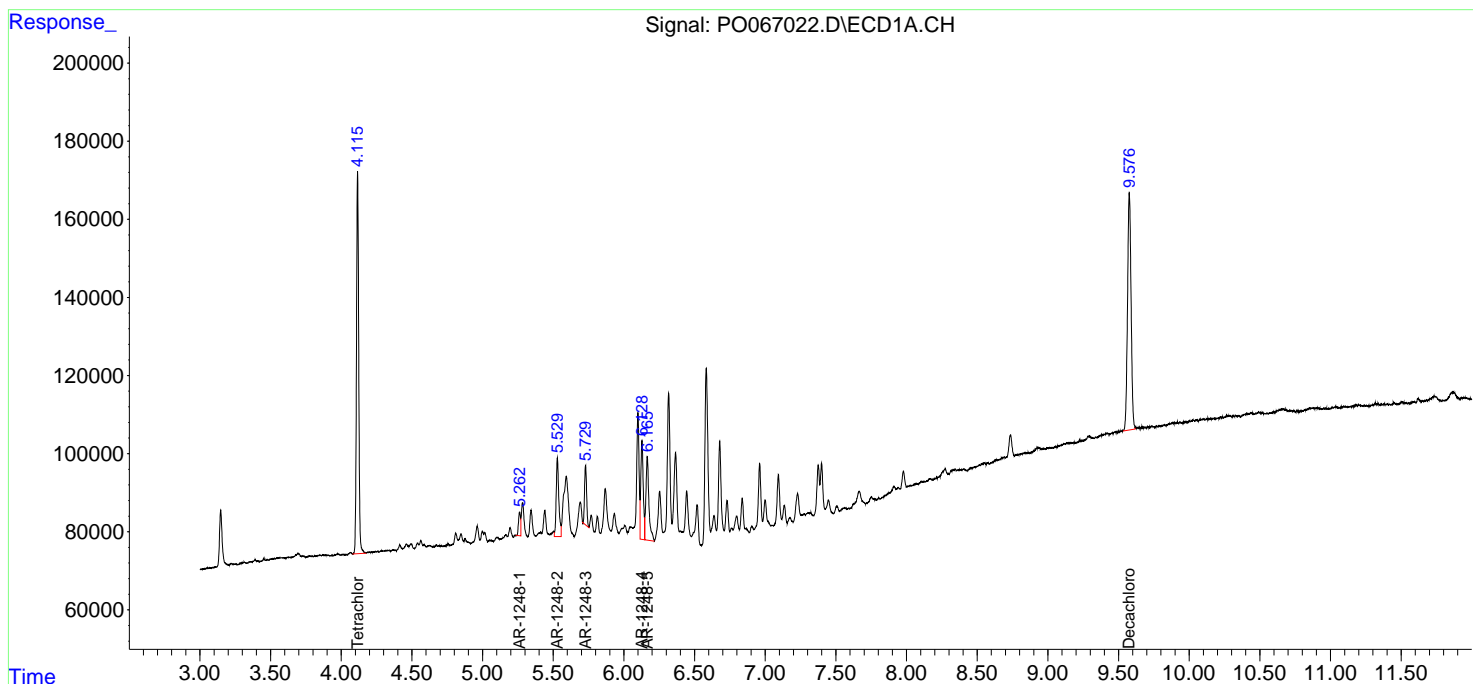
Data Path : Z:\pestpcbsrv\HPCHEM1\ECD_O\Data\P0030920\
 Data File : P0067022.D
 Signal(s) : Signal #1: ECD1A.CH Signal #2: ECD2B.CH
 Acq On : 09 Mar 2020 13:55
 Operator : DD\AJ
 Sample : L1841-09
 Misc :
 ALS Vial : 19 Sample Multiplier: 1

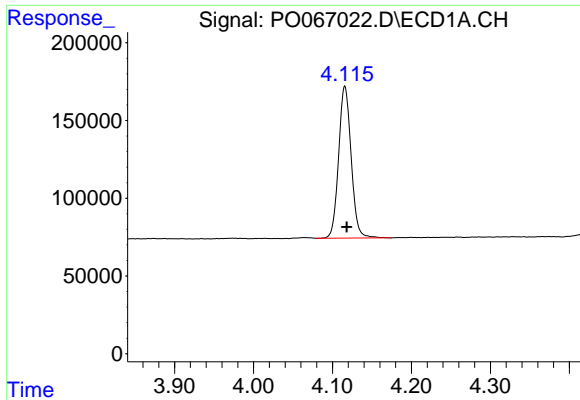
Instrument :
 ECD_O
Client Sampled :
 WEST-B

Manual Integrations
APPROVED
 Sohil
 3/11/2020 10:59:32 AM

Integration File signal 1: autoint1.e
 Integration File signal 2: autoint2.e
 Quant Time: Mar 10 12:39:50 2020
 Quant Method : Z:\pestpcbsrv\HPCHEM1\ECD_O\methods\P0030420.M
 Quant Title : GC EXTRACTABLES
 QLast Update : Wed Mar 04 13:48:03 2020
 Response via : Initial Calibration
 Integrator: ChemStation 6890 Scale Mode: Small noise peaks clipped

Volume Inj. : 2 µl
 Signal #1 Phase : ZB-MR1 Signal #2 Phase: ZB-MR2
 Signal #1 Info : 30Mx0.32mmx 0.50µ Signal #2 Info : 30M x 0.32mm x 0.25µm

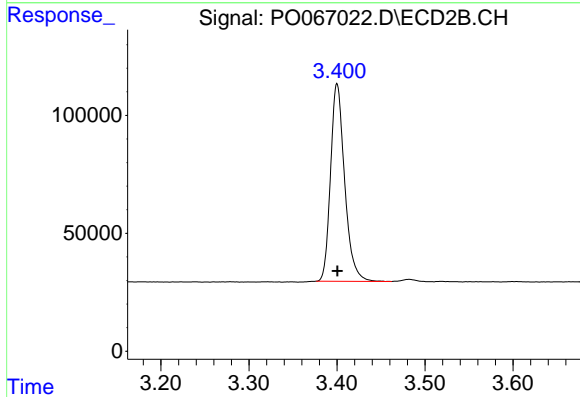




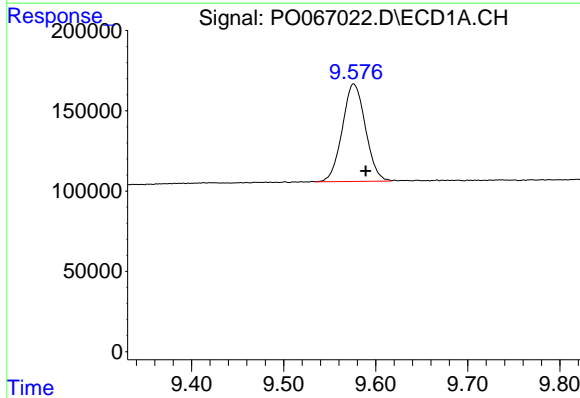
#1 Tetrachloro-m-xylene
 R.T.: 4.116 min
 Delta R.T.: -0.002 min
 Response: 1077023
 Conc: 20.20 ng/ml

Instrument :
 ECD_O
 ClientSampled :
 WEST-B

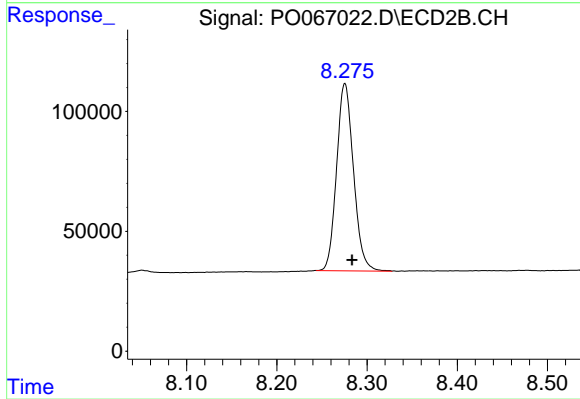
Manual Integrations
 APPROVED
 Sohil
 3/11/2020 10:59:32 AM



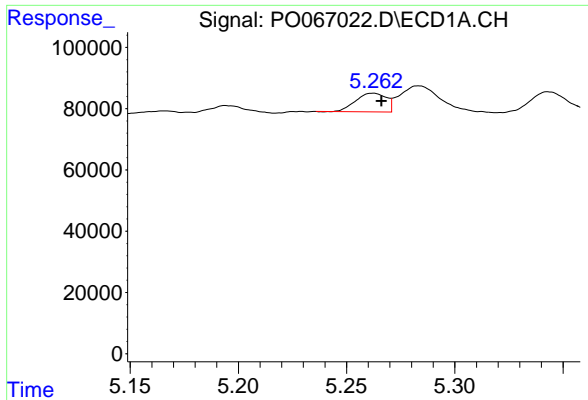
#1 Tetrachloro-m-xylene
 R.T.: 3.400 min
 Delta R.T.: 0.000 min
 Response: 933721
 Conc: 20.14 ng/ml



#2 Decachlorobiphenyl
 R.T.: 9.576 min
 Delta R.T.: -0.014 min
 Response: 1058820
 Conc: 19.23 ng/ml m



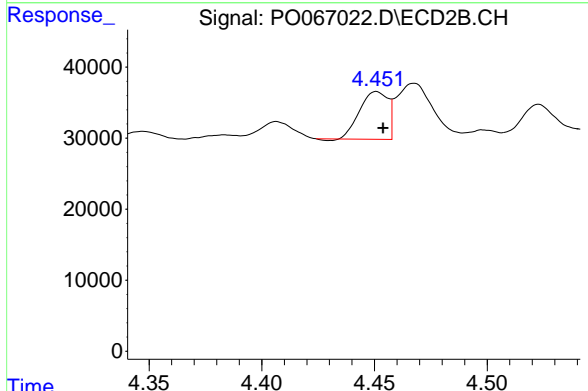
#2 Decachlorobiphenyl
 R.T.: 8.275 min
 Delta R.T.: -0.008 min
 Response: 1017662
 Conc: 19.68 ng/ml m



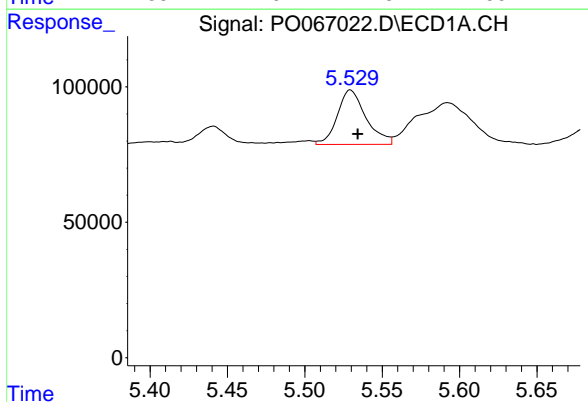
#21 AR-1248-1
 R.T.: 5.262 min
 Delta R.T.: -0.004 min
 Response: 59507
 Conc: 63.88 ng/ml

Instrument :
 ECD_O
ClientSampled :
 WEST-B

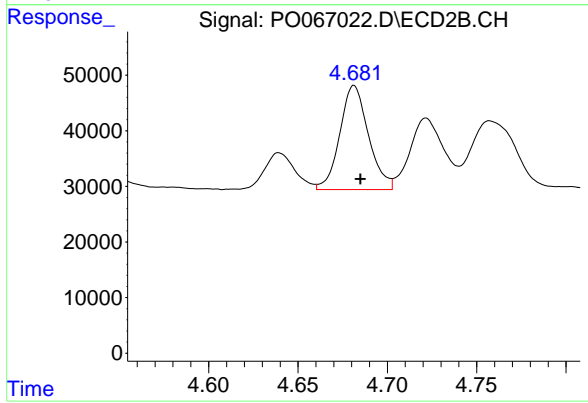
Manual Integrations
APPROVED
 Sohil
 3/11/2020 10:59:32 AM



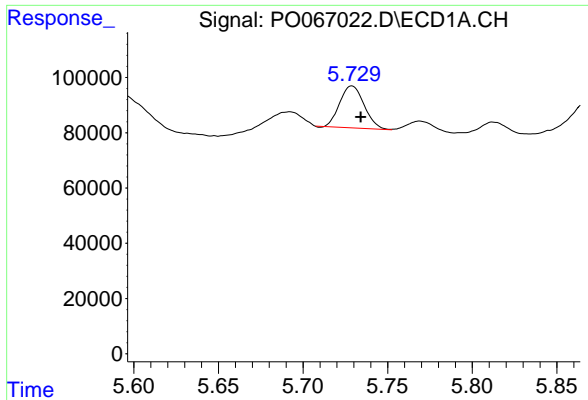
#21 AR-1248-1
 R.T.: 4.451 min
 Delta R.T.: -0.003 min
 Response: 58057
 Conc: 83.80 ng/ml



#22 AR-1248-2
 R.T.: 5.529 min
 Delta R.T.: -0.005 min
 Response: 259069
 Conc: 204.85 ng/ml



#22 AR-1248-2
 R.T.: 4.681 min
 Delta R.T.: -0.003 min
 Response: 209080
 Conc: 189.40 ng/ml

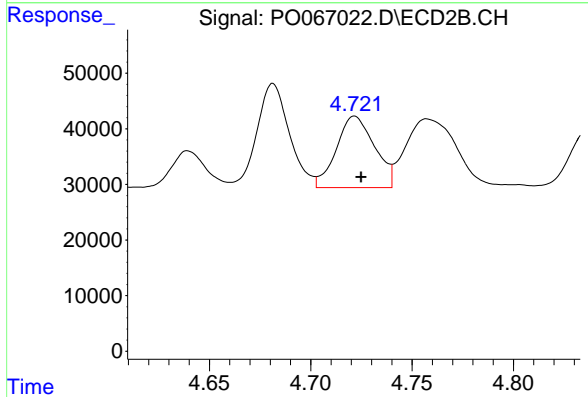


#23 AR-1248-3

R.T.: 5.729 min
 Delta R.T.: -0.005 min
 Response: 152897
 Conc: 101.44 ng/ml

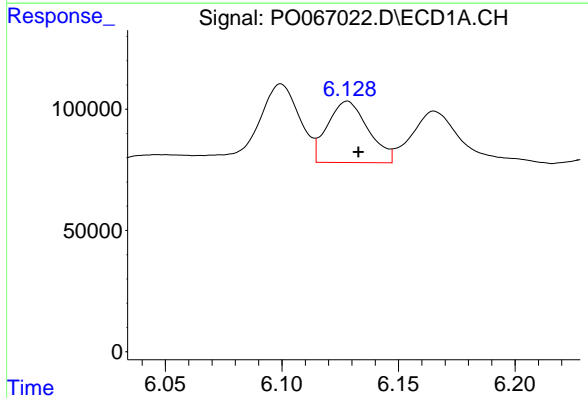
Instrument :
 ECD_O
 ClientSampled :
 WEST-B

Manual Integrations
 APPROVED
 Sohil
 3/11/2020 10:59:32 AM



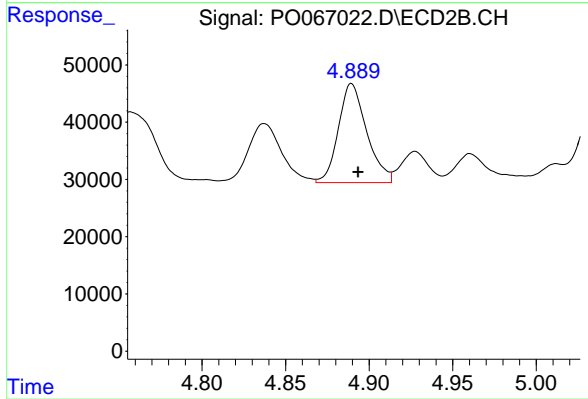
#23 AR-1248-3

R.T.: 4.722 min
 Delta R.T.: -0.003 min
 Response: 168787
 Conc: 149.60 ng/ml



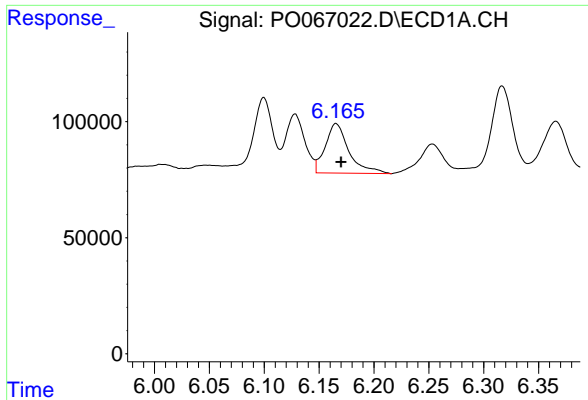
#24 AR-1248-4

R.T.: 6.128 min
 Delta R.T.: -0.005 min
 Response: 307292
 Conc: 168.89 ng/ml



#24 AR-1248-4

R.T.: 4.890 min
 Delta R.T.: -0.004 min
 Response: 203945
 Conc: 145.06 ng/ml



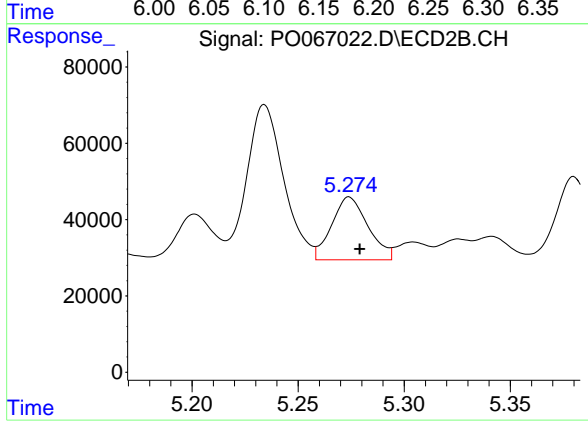
#25 AR-1248-5

R.T.: 6.165 min
Delta R.T.: -0.005 min
Response: 321024
Conc: 182.41 ng/ml

Instrument :
ECD_O
ClientSampled :
WEST-B

Manual Integrations
APPROVED

Sohil
3/11/2020 10:59:32 AM



#25 AR-1248-5

R.T.: 5.274 min
Delta R.T.: -0.005 min
Response: 196174
Conc: 142.28 ng/ml