

Data Path : Z:\pestpcbsrv\HPCHEM1\ECD_0\Data\P0031020\
 Data File : P0067060.D
 Signal(s) : Signal #1: ECD1A.CH Signal #2: ECD2B.CH
 Acq On : 10 Mar 2020 14:22
 Operator : DD\AJ
 Sample : AR1660CCC500
 Misc :
 ALS Vial : 3 Sample Multiplier: 1

Instrument :
 ECD_0
 ClientSampleId :
 AR1660CCC500

Integration File signal 1: autoint1.e
 Integration File signal 2: autoint2.e
 Quant Time: Mar 10 14:46:31 2020
 Quant Method : Z:\pestpcbsrv\HPCHEM1\ECD_0\methods\P0030420.M
 Quant Title : GC EXTRACTABLES
 QLast Update : Wed Mar 04 13:48:03 2020
 Response via : Initial Calibration
 Integrator: ChemStation 6890 Scale Mode: Small noise peaks clipped

Volume Inj. : 2 µl
 Signal #1 Phase : ZB-MR1 Signal #2 Phase: ZB-MR2
 Signal #1 Info : 30Mx0.32mmx 0.50µ Signal #2 Info : 30M x 0.32mm x 0.25µm

Compound	RT#1	RT#2	Resp#1	Resp#2	ng/ml	ng/ml

System Monitoring Compounds						
1) SA Tetrachlo...	4.115	3.400	2901299	2435177	54.425	52.525
2) SA Decachlor...	9.576	8.273	2689988	2468779	48.858m	47.752m
Target Compounds						
3) L1 AR-1016-1	5.261	4.450	1009497	725518	526.250	522.743
4) L1 AR-1016-2	5.282	4.467	1639741	1449619	540.841	509.692
5) L1 AR-1016-3	5.342	4.639	986788	647940	574.231	519.549
6) L1 AR-1016-4	5.439	4.680	800158	567679	539.601	547.311
7) L1 AR-1016-5	5.727	4.888	733158	691456	527.083	520.920
31) L7 AR-1260-1	6.837	5.902	1490681	1337975	532.058	509.983
32) L7 AR-1260-2	7.093	6.090	2189716	1656970	530.757	508.235
33) L7 AR-1260-3	7.448	6.239	1856293	1527153	519.644	506.652
34) L7 AR-1260-4	7.671	6.705	1652378	1313037	513.349	499.361
35) L7 AR-1260-5	7.976	6.948	3821512	3070475	545.602	499.434

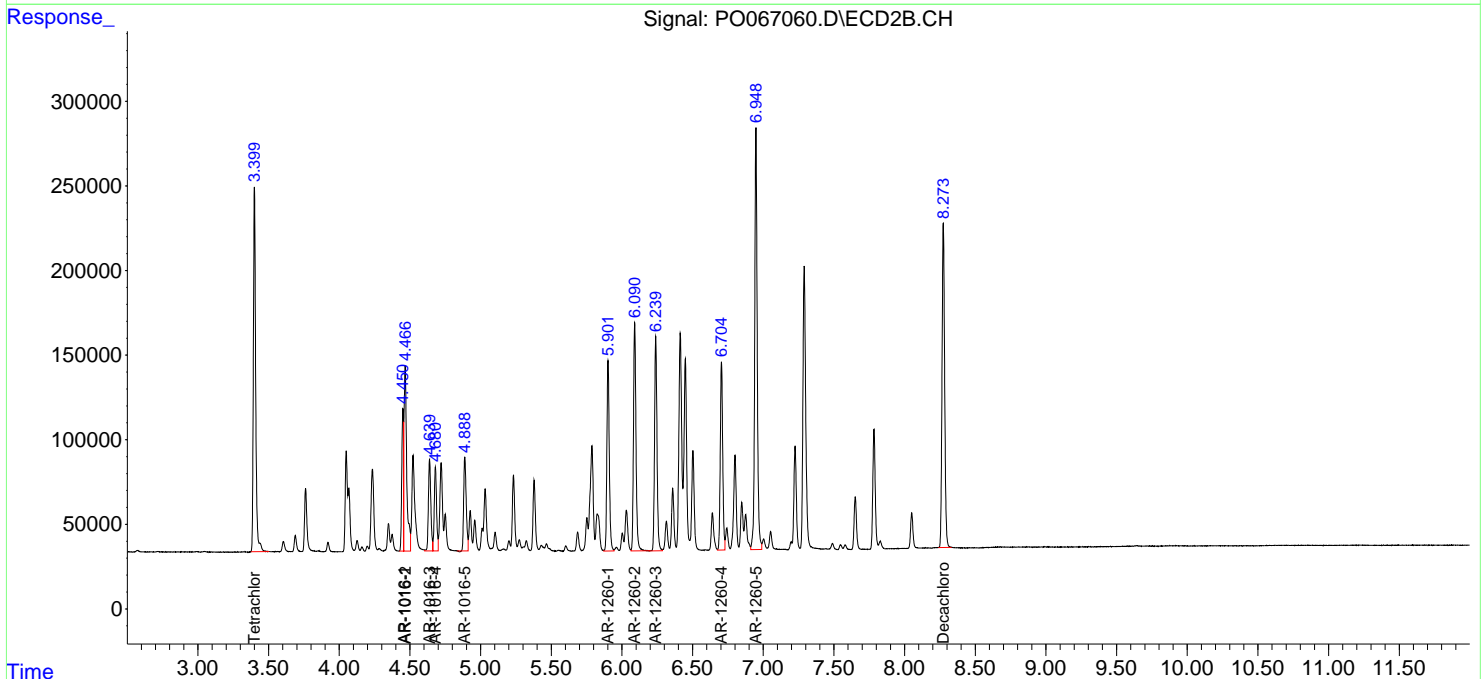
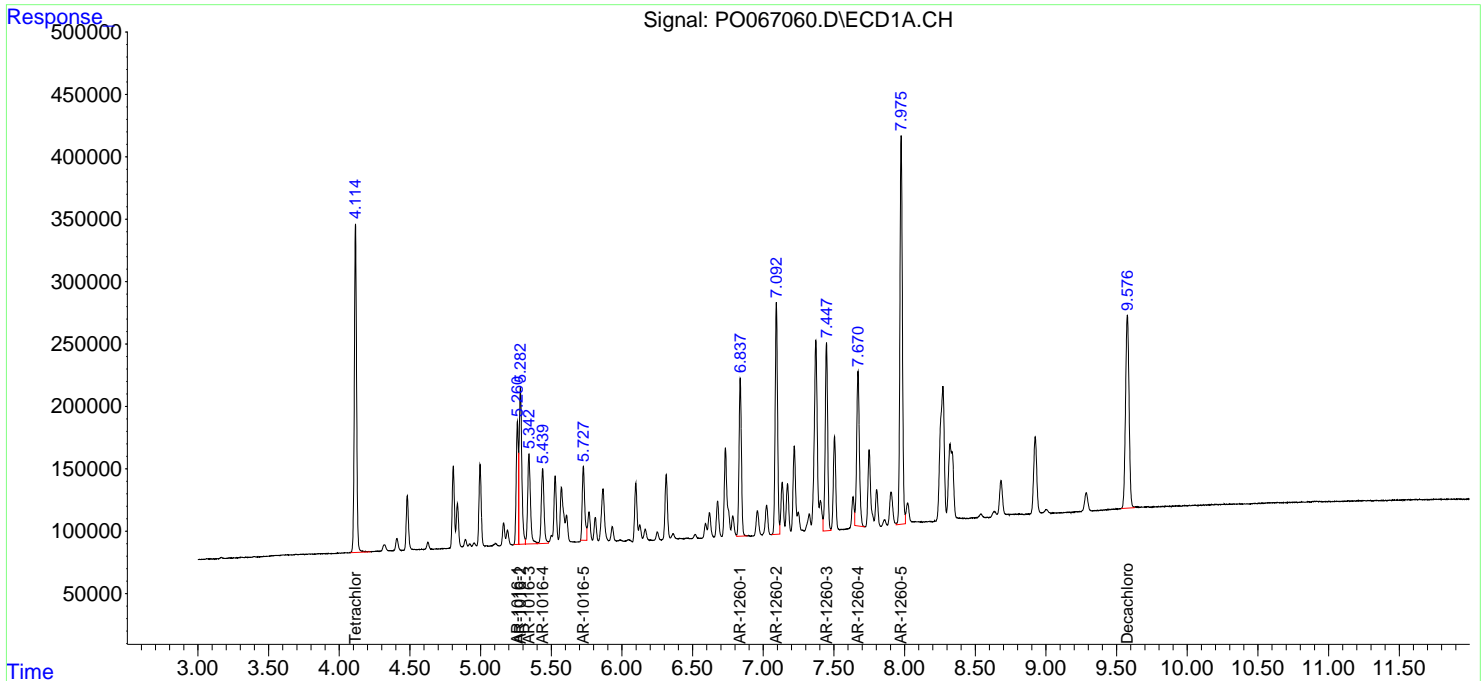
(f)=RT Delta > 1/2 Window (#)=Amounts differ by > 25% (m)=manual int.

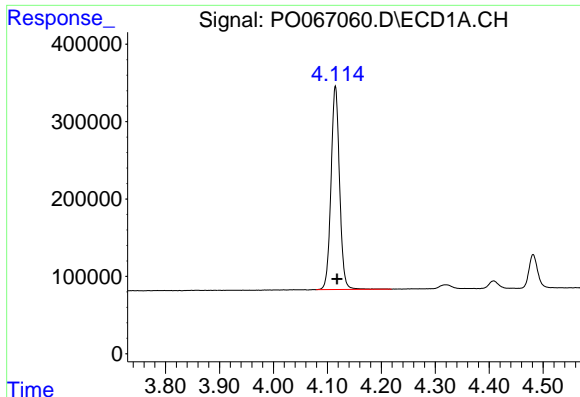
Data Path : Z:\pestpcbsrv\HPCHEM1\ECD_O\Data\P0031020\
 Data File : P0067060.D
 Signal(s) : Signal #1: ECD1A.CH Signal #2: ECD2B.CH
 Acq On : 10 Mar 2020 14:22
 Operator : DD\AJ
 Sample : AR1660CCC500
 Misc :
 ALS Vial : 3 Sample Multiplier: 1

Instrument :
 ECD_O
 ClientSampleId :
 AR1660CCC500

Integration File signal 1: autoint1.e
 Integration File signal 2: autoint2.e
 Quant Time: Mar 10 14:46:31 2020
 Quant Method : Z:\pestpcbsrv\HPCHEM1\ECD_O\methods\P0030420.M
 Quant Title : GC EXTRACTABLES
 QLast Update : Wed Mar 04 13:48:03 2020
 Response via : Initial Calibration
 Integrator: ChemStation 6890 Scale Mode: Small noise peaks clipped

Volume Inj. : 2 µl
 Signal #1 Phase : ZB-MR1 Signal #2 Phase: ZB-MR2
 Signal #1 Info : 30Mx0.32mmx 0.50µ Signal #2 Info : 30M x 0.32mm x 0.25µm

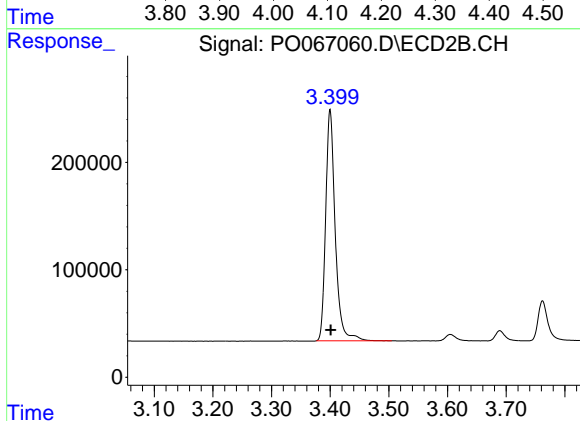




#1 Tetrachloro-m-xylene

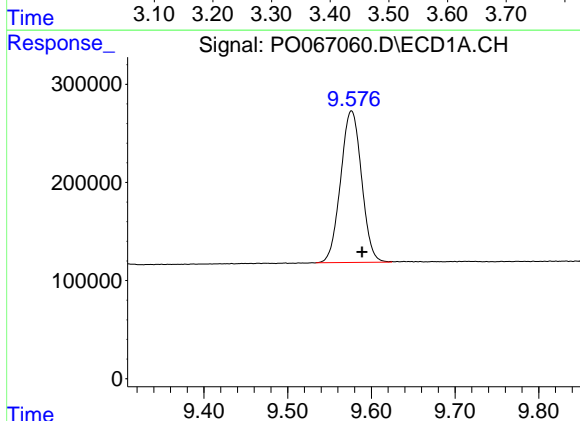
R.T.: 4.115 min
 Delta R.T.: -0.003 min
 Response: 2901299
 Conc: 54.42 ng/ml

Instrument :
 ECD_O
 ClientSampleId :
 AR1660CCC500



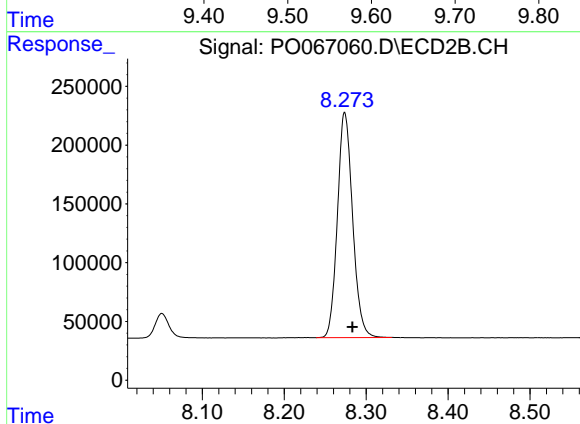
#1 Tetrachloro-m-xylene

R.T.: 3.400 min
 Delta R.T.: 0.000 min
 Response: 2435177
 Conc: 52.53 ng/ml



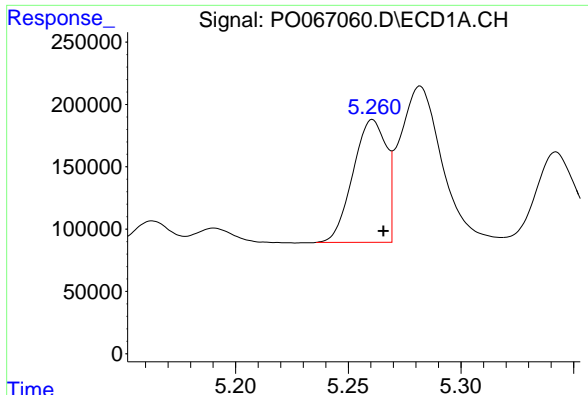
#2 Decachlorobiphenyl

R.T.: 9.576 min
 Delta R.T.: -0.013 min
 Response: 2689988
 Conc: 48.86 ng/ml m



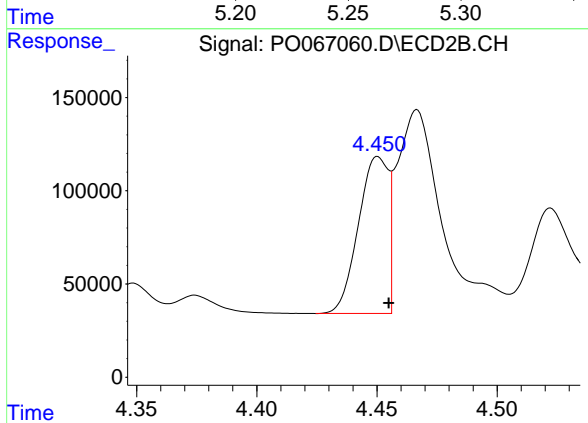
#2 Decachlorobiphenyl

R.T.: 8.273 min
 Delta R.T.: -0.010 min
 Response: 2468779
 Conc: 47.75 ng/ml m

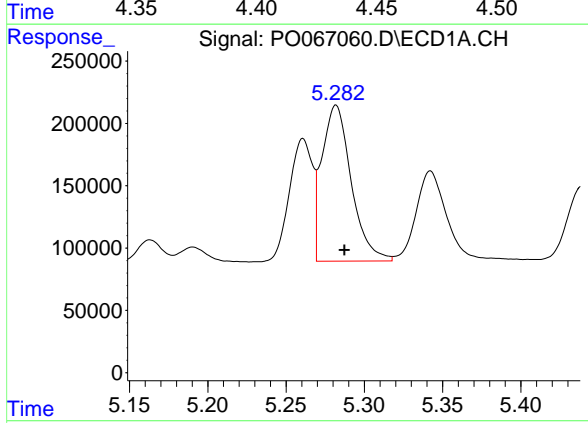


#3 AR-1016-1
 R.T.: 5.261 min
 Delta R.T.: -0.005 min
 Response: 1009497
 Conc: 526.25 ng/ml

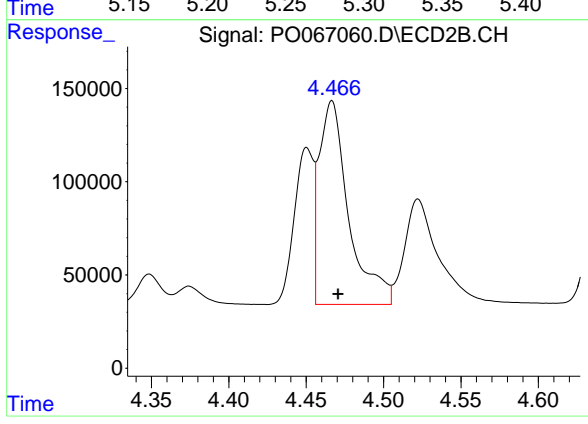
Instrument :
 ECD_O
 ClientSampleId :
 AR1660CCC500



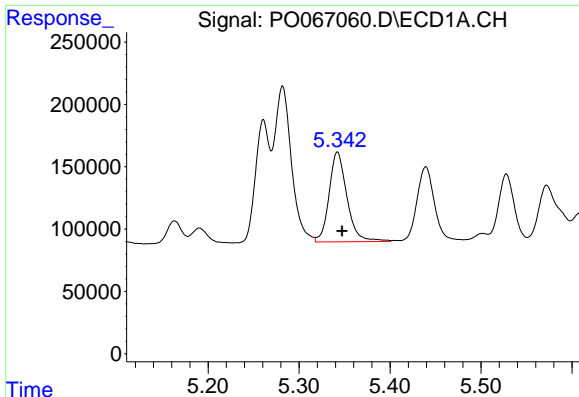
#3 AR-1016-1
 R.T.: 4.450 min
 Delta R.T.: -0.004 min
 Response: 725518
 Conc: 522.74 ng/ml



#4 AR-1016-2
 R.T.: 5.282 min
 Delta R.T.: -0.005 min
 Response: 1639741
 Conc: 540.84 ng/ml



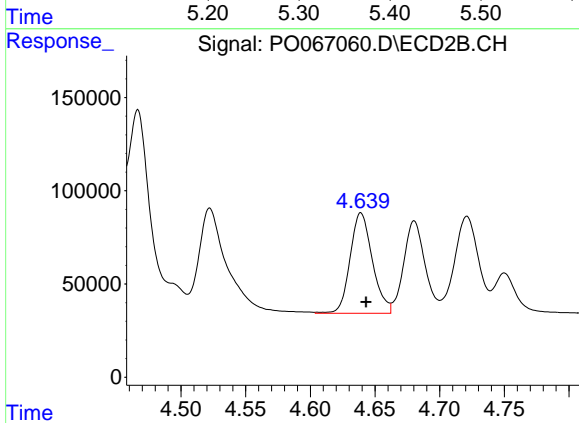
#4 AR-1016-2
 R.T.: 4.467 min
 Delta R.T.: -0.004 min
 Response: 1449619
 Conc: 509.69 ng/ml



#5 AR-1016-3

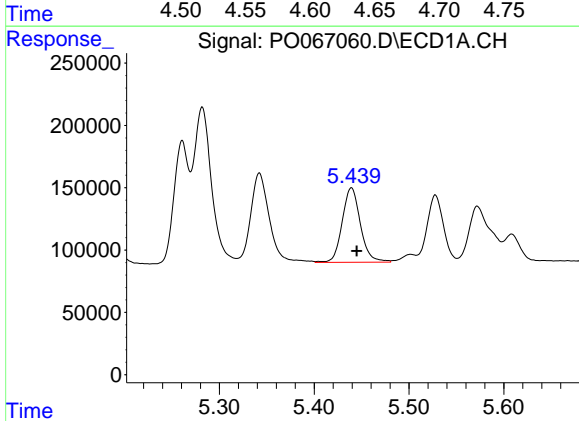
R.T.: 5.342 min
Delta R.T.: -0.005 min
Response: 986788
Conc: 574.23 ng/ml

Instrument :
ECD_O
ClientSampleId :
AR1660CCC500



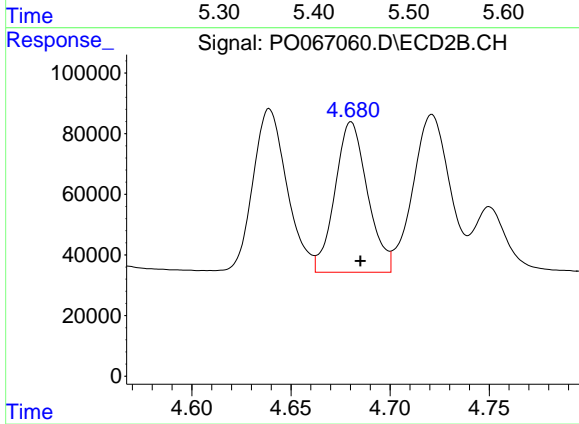
#5 AR-1016-3

R.T.: 4.639 min
Delta R.T.: -0.004 min
Response: 647940
Conc: 519.55 ng/ml



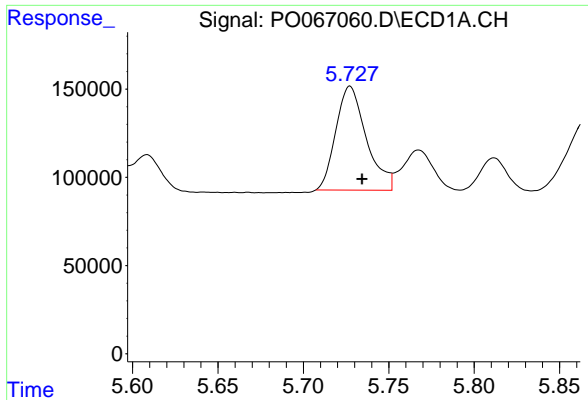
#6 AR-1016-4

R.T.: 5.439 min
Delta R.T.: -0.006 min
Response: 800158
Conc: 539.60 ng/ml



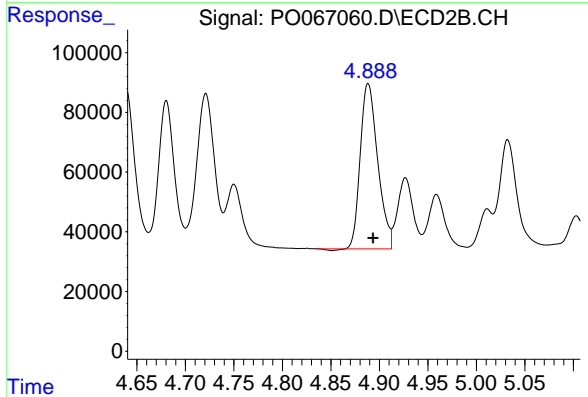
#6 AR-1016-4

R.T.: 4.680 min
Delta R.T.: -0.005 min
Response: 567679
Conc: 547.31 ng/ml

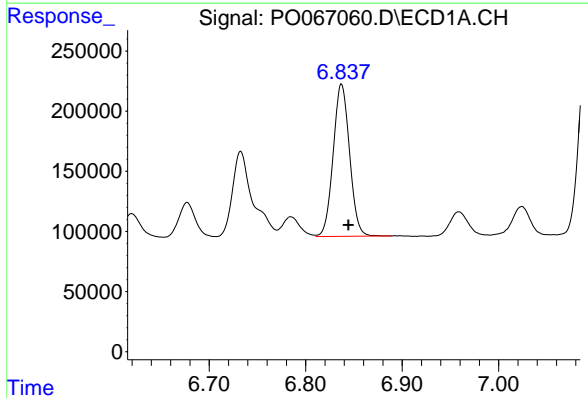


#7 AR-1016-5
 R.T.: 5.727 min
 Delta R.T.: -0.007 min
 Response: 733158
 Conc: 527.08 ng/ml

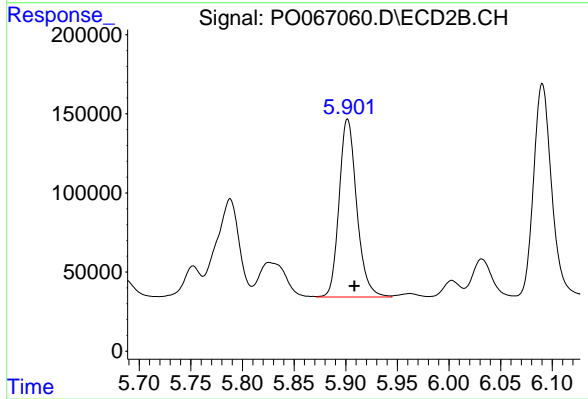
Instrument :
 ECD_O
 ClientSampleId :
 AR1660CCC500



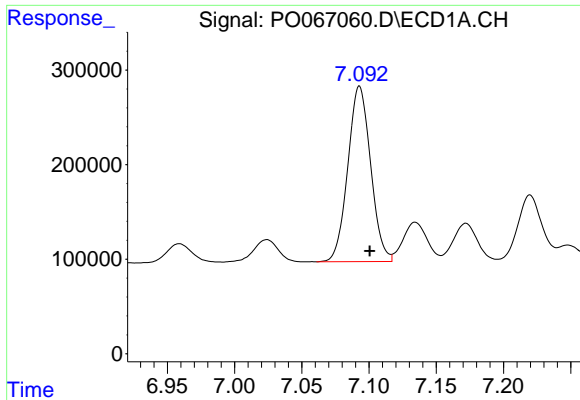
#7 AR-1016-5
 R.T.: 4.888 min
 Delta R.T.: -0.005 min
 Response: 691456
 Conc: 520.92 ng/ml



#31 AR-1260-1
 R.T.: 6.837 min
 Delta R.T.: -0.007 min
 Response: 1490681
 Conc: 532.06 ng/ml



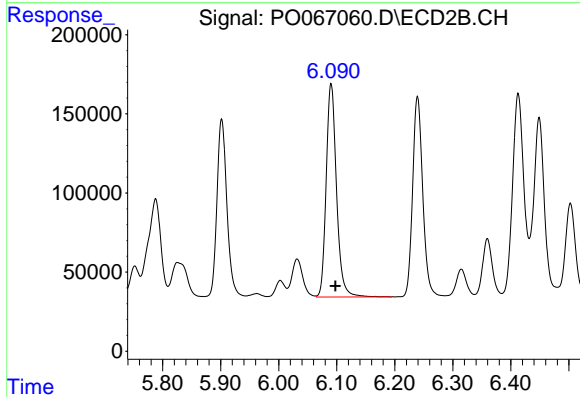
#31 AR-1260-1
 R.T.: 5.902 min
 Delta R.T.: -0.007 min
 Response: 1337975
 Conc: 509.98 ng/ml



#32 AR-1260-2

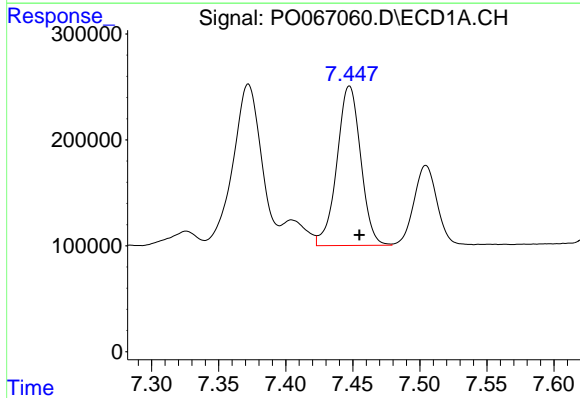
R.T.: 7.093 min
 Delta R.T.: -0.008 min
 Response: 2189716
 Conc: 530.76 ng/ml

Instrument :
 ECD_O
 ClientSampleId :
 AR1660CCC500



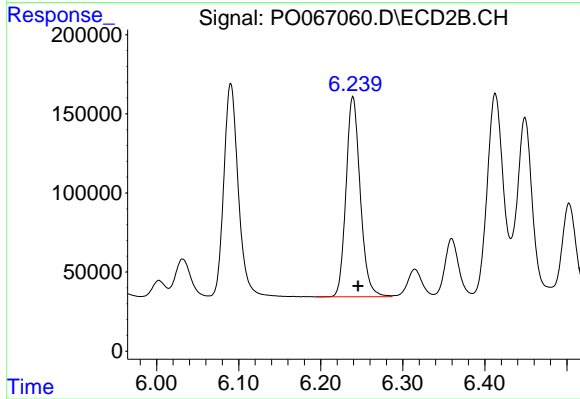
#32 AR-1260-2

R.T.: 6.090 min
 Delta R.T.: -0.007 min
 Response: 1656970
 Conc: 508.23 ng/ml



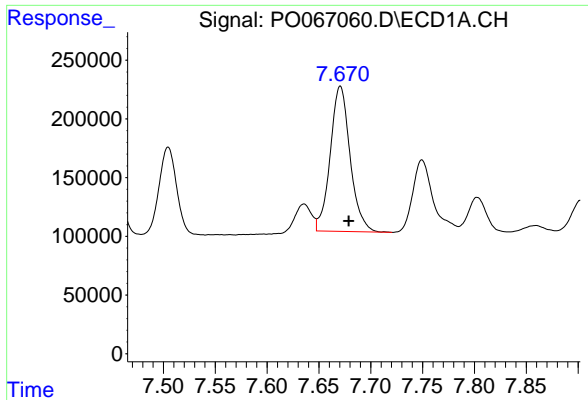
#33 AR-1260-3

R.T.: 7.448 min
 Delta R.T.: -0.008 min
 Response: 1856293
 Conc: 519.64 ng/ml



#33 AR-1260-3

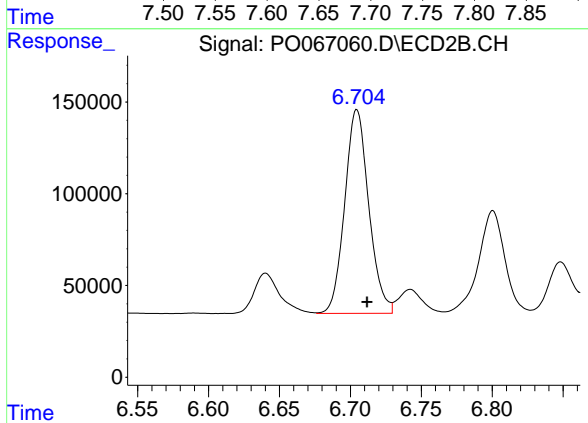
R.T.: 6.239 min
 Delta R.T.: -0.006 min
 Response: 1527153
 Conc: 506.65 ng/ml



#34 AR-1260-4

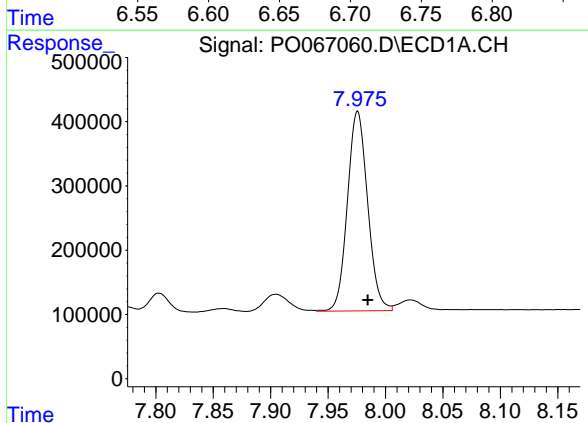
R.T.: 7.671 min
 Delta R.T.: -0.008 min
 Response: 1652378
 Conc: 513.35 ng/ml

Instrument :
 ECD_O
 ClientSampled :
 AR1660CCC500



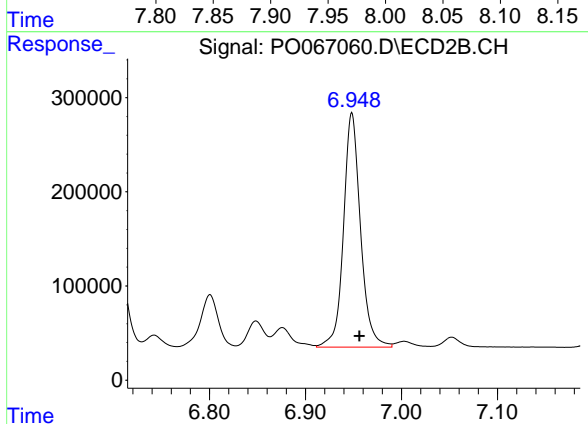
#34 AR-1260-4

R.T.: 6.705 min
 Delta R.T.: -0.007 min
 Response: 1313037
 Conc: 499.36 ng/ml



#35 AR-1260-5

R.T.: 7.976 min
 Delta R.T.: -0.009 min
 Response: 3821512
 Conc: 545.60 ng/ml



#35 AR-1260-5

R.T.: 6.948 min
 Delta R.T.: -0.008 min
 Response: 3070475
 Conc: 499.43 ng/ml