

Data Path : P:\HPCHEM1\ECD O\Data\PO031218\
 Data File : PO042973.D
 Signal(s) : Signal #1: ECD1A.CH Signal #2: ECD2B.CH
 Acq On : 13 Mar 2018 00:26
 Operator : SM/UA
 Sample : J1876-02MSD
 Misc :
 ALS Vial : 26 Sample Multiplier: 1

Instrument :
 ECD_O
ClientSampleId :
 SB-07-08-10MSD

Manual Integrations
APPROVED
 ugo
 3/13/2018 11:07:58 AM

Integration File signal 1: autoint1.e
 Integration File signal 2: autoint2.e
 Quant Time: Mar 13 01:44:31 2018
 Quant Method : P:\HPCHEM1\ECD_O\methods\PO022118.M
 Quant Title : GC EXTRACTABLES
 QLast Update : Mon Feb 26 14:24:10 2018
 Response via : Initial Calibration
 Integrator: ChemStation 6890 Scale Mode: Small noise peaks clipped

Volume Inj. : 2 µl
 Signal #1 Phase : ZB-MR1 Signal #2 Phase: ZB-MR2
 Signal #1 Info : 30Mx0.32mmx 0.50µ Signal #2 Info : 30M x 0.32mm x 0.25µm

Compound	RT#1	RT#2	Resp#1	Resp#2	nq/ml	nq/ml

System Monitoring Compounds						
1) SA Tetrachlo...	4.085	3.337	4169889	5937077	16.833m	16.066m
2) SA Decachlor...	9.452	8.111	2871412	3522899	11.362	9.136
Target Compounds						
3) L1 AR-1016-1	4.950	4.154	1387641	2073120	206.623m	219.009m
4) L1 AR-1016-2	5.290	4.590	1675212	1699504	187.070	207.407
5) L1 AR-1016-3	5.384	4.628	1345819	1714366	186.269	165.011m
6) L1 AR-1016-4	5.806	4.791	1093410	1859148	153.902m	167.413m
7) L1 AR-1016-5	6.036	5.128	923331	1553228	128.261m	146.941
31) L7 AR-1260-1	6.767	5.783	2190753	3263978	159.241	135.198m
32) L7 AR-1260-2	7.018	5.969	2957263	5392296	161.672m	160.523m
33) L7 AR-1260-3	7.293	6.114	3305616	4126827	159.088m	144.970m
34) L7 AR-1260-4	7.370	6.320	1974572	3349862	133.407	97.986m#
35) L7 AR-1260-5	7.892	6.814	4107798	7001722	121.519	103.461

(f)=RT Delta > 1/2 Window (#)=Amounts differ by > 25% (m)=manual int.

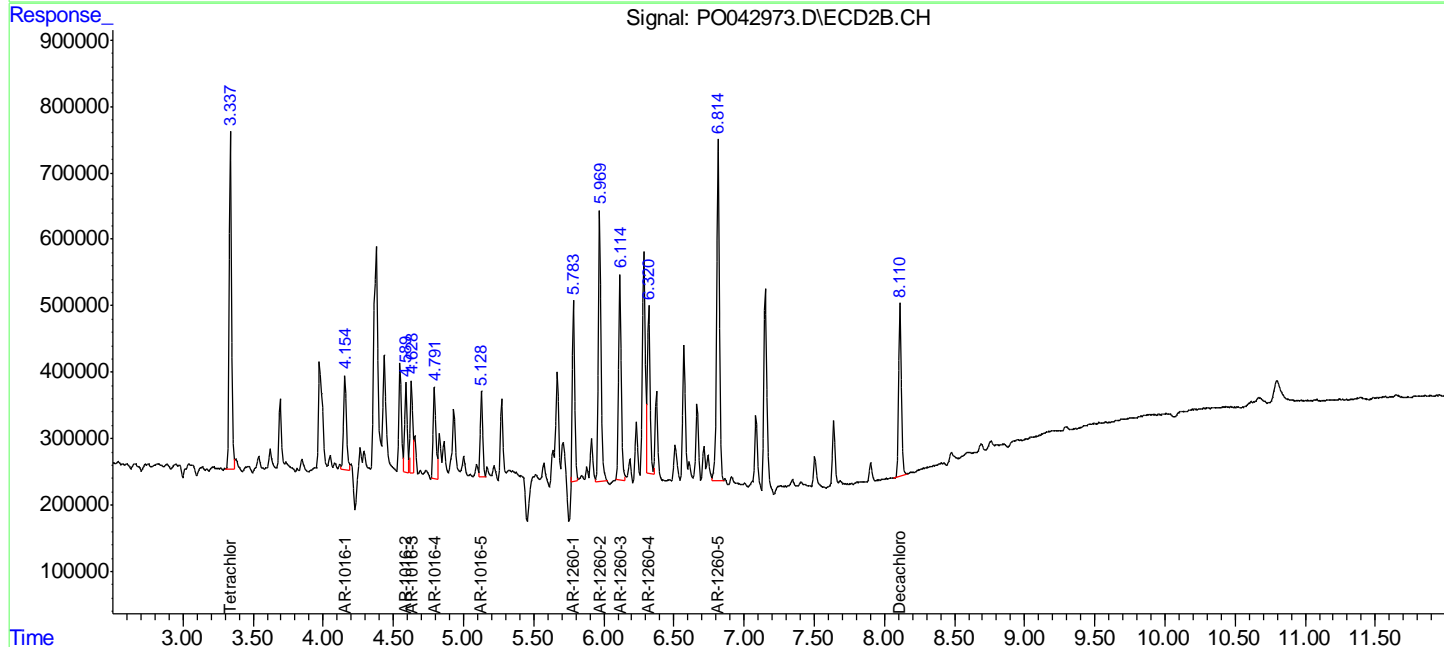
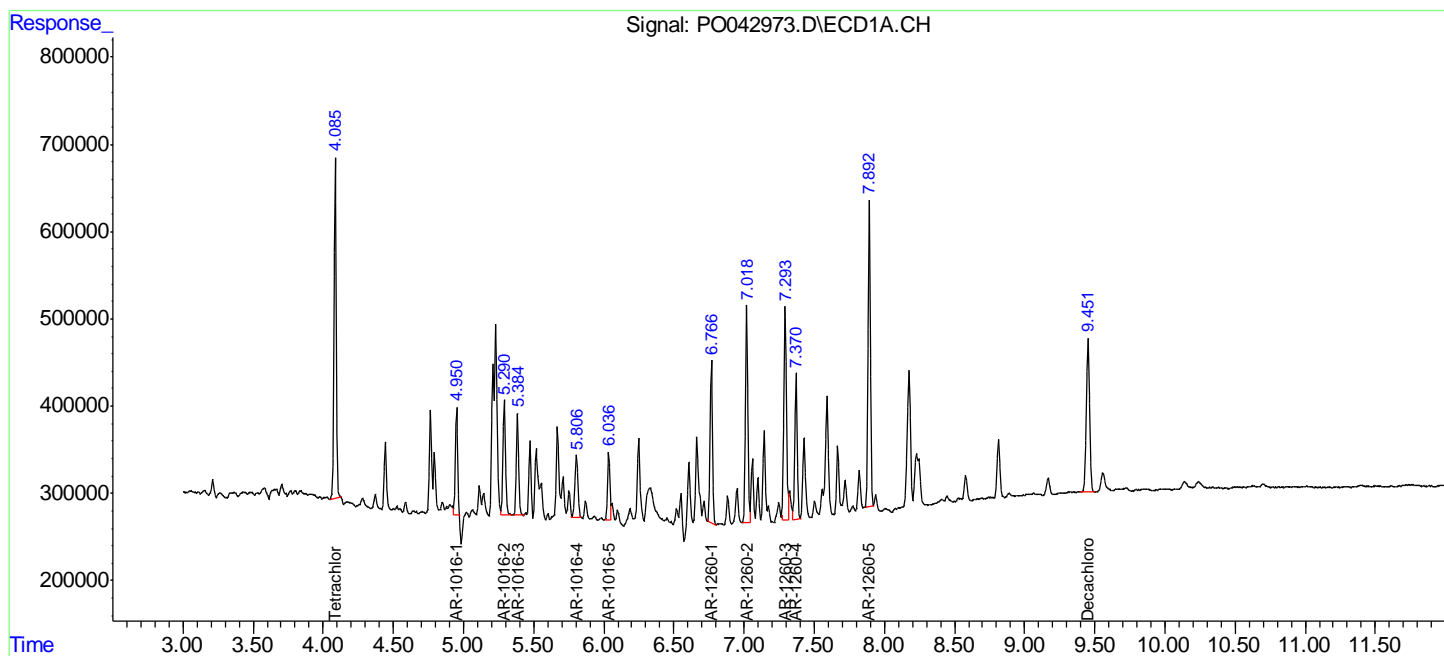
Data Path : P:\HPCHEM1\ECD O\Data\PO031218\
 Data File : PO042973.D
 Signal(s) : Signal #1: ECD1A.CH Signal #2: ECD2B.CH
 Acq On : 13 Mar 2018 00:26
 Operator : SM/UA
 Sample : J1876-02MSD
 Misc :
 ALS Vial : 26 Sample Multiplier: 1

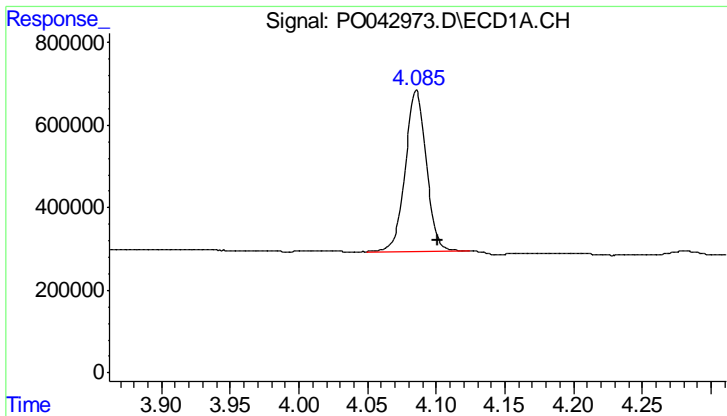
Instrument :
 ECD_O
 Client Sampled :
 SB-07-08-10MSD

Manual Integrations
APPROVED
 ugo
 3/13/2018 11:07:58 AM

Integration File signal 1: autoint1.e
 Integration File signal 2: autoint2.e
 Quant Time: Mar 13 01:44:31 2018
 Quant Method : P:\HPCHEM1\ECD_O\methods\PO022118.M
 Quant Title : GC EXTRACTABLES
 QLast Update : Mon Feb 26 14:24:10 2018
 Response via : Initial Calibration
 Integrator: ChemStation 6890 Scale Mode: Small noise peaks clipped

Volume Inj. : 2 µl
 Signal #1 Phase : ZB-MR1 Signal #2 Phase: ZB-MR2
 Signal #1 Info : 30Mx0.32mmx 0.50µ Signal #2 Info : 30M x 0.32mm x 0.25µm



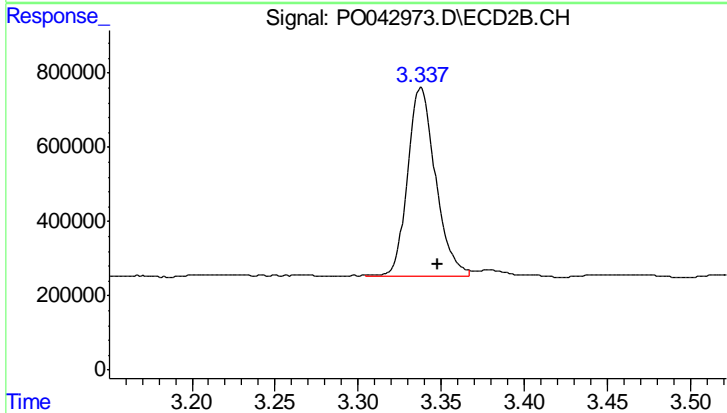


#1 Tetrachloro-m-xylene

R.T.: 4.085 min
 Delta R.T.: -0.016 min
 Response: 4169889
 Conc: 16.83 ng/ml

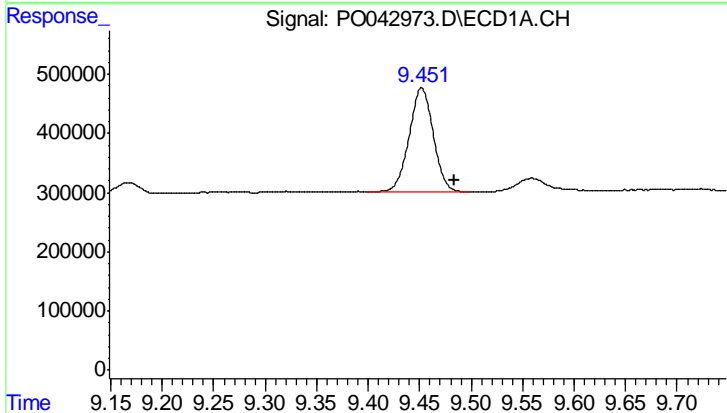
Instrument :
 ECD_O
 ClientSampleId :
 SB-07-08-10MSD

Manual Integrations
 APPROVED
 ugo
 3/13/2018 11:07:58 AM



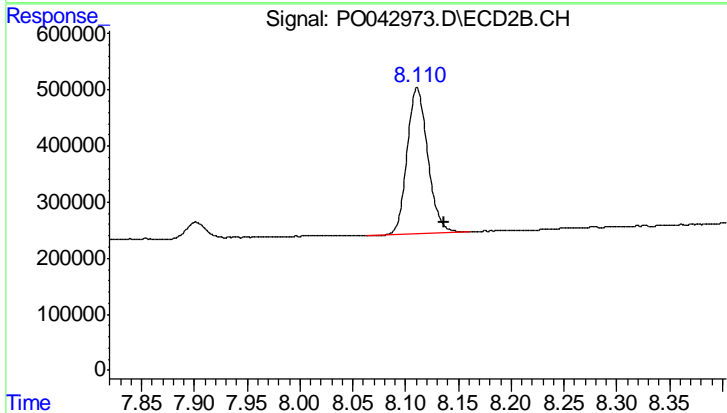
#1 Tetrachloro-m-xylene

R.T.: 3.337 min
 Delta R.T.: -0.011 min
 Response: 5937077
 Conc: 16.07 ng/ml m



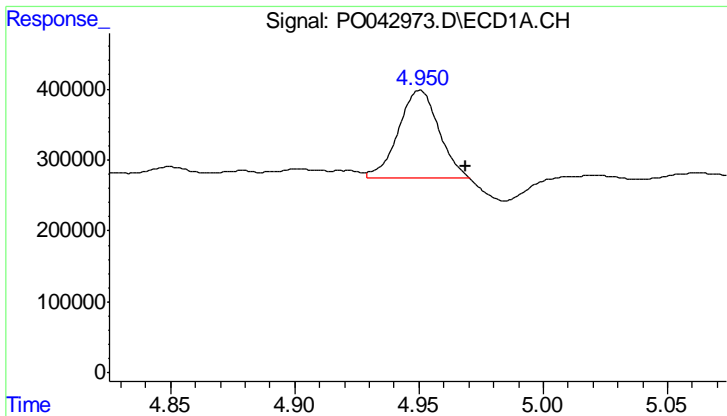
#2 Decachlorobiphenyl

R.T.: 9.452 min
 Delta R.T.: -0.032 min
 Response: 2871412
 Conc: 11.36 ng/ml



#2 Decachlorobiphenyl

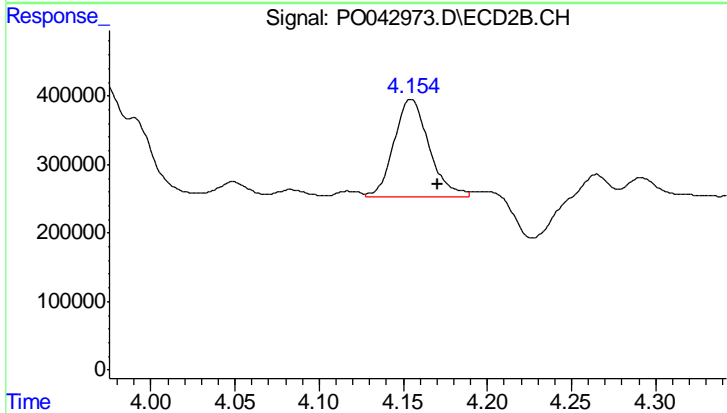
R.T.: 8.111 min
 Delta R.T.: -0.026 min
 Response: 3522899
 Conc: 9.14 ng/ml



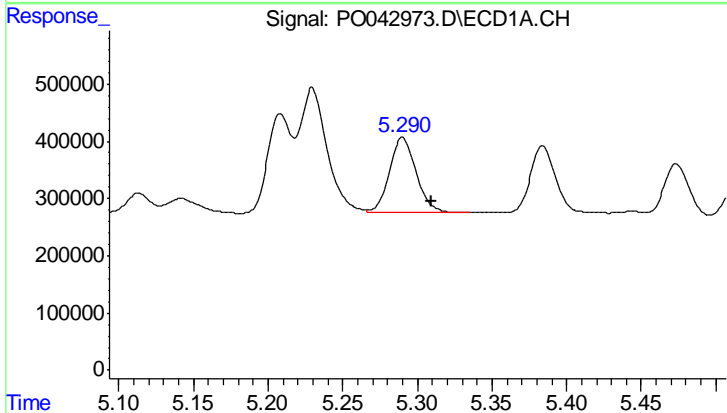
#3 AR-1016-1
 R.T.: 4.950 min
 Delta R.T.: -0.019 min
 Response: 1387641
 Conc: 206.62 ng/ml

Instrument :
 ECD_O
ClientSampled :
 SB-07-08-10MSD

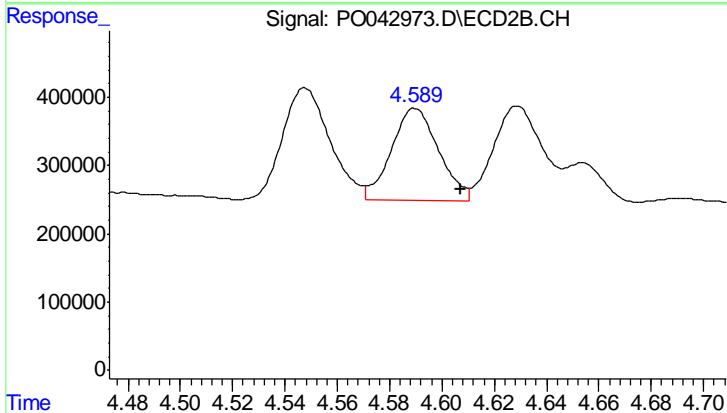
Manual Integrations
APPROVED
 ugo
 3/13/2018 11:07:58 AM



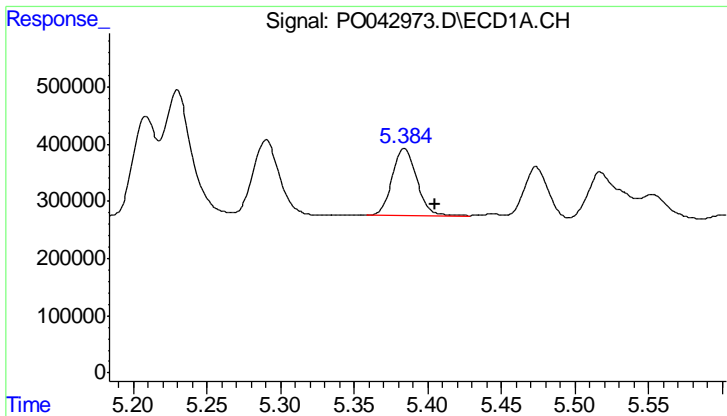
#3 AR-1016-1
 R.T.: 4.154 min
 Delta R.T.: -0.016 min
 Response: 2073120
 Conc: 219.01 ng/ml m



#4 AR-1016-2
 R.T.: 5.290 min
 Delta R.T.: -0.020 min
 Response: 1675212
 Conc: 187.07 ng/ml



#4 AR-1016-2
 R.T.: 4.590 min
 Delta R.T.: -0.018 min
 Response: 1699504
 Conc: 207.41 ng/ml



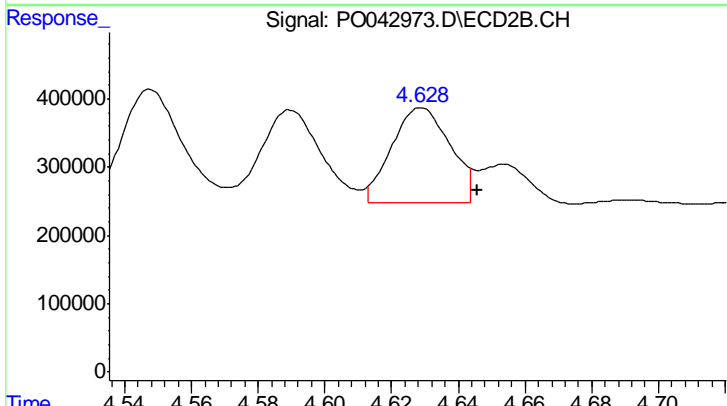
#5 AR-1016-3

R.T.: 5.384 min
 Delta R.T.: -0.021 min
 Response: 1345819
 Conc: 186.27 ng/ml

Instrument :
 ECD_O
 ClientSampleId :
 SB-07-08-10MSD

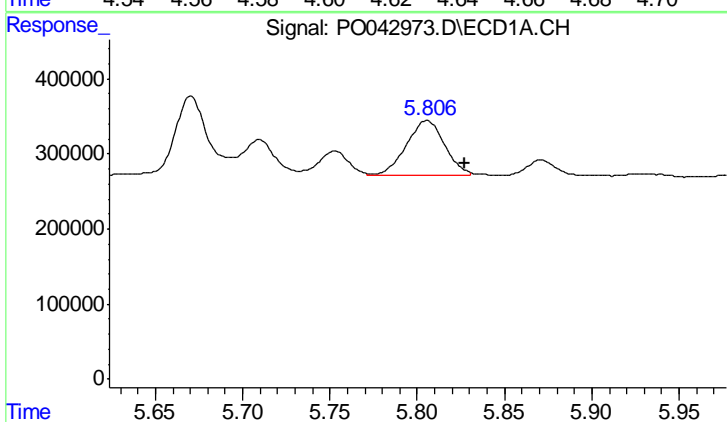
Manual Integrations
 APPROVED

ugo
 3/13/2018 11:07:58 AM



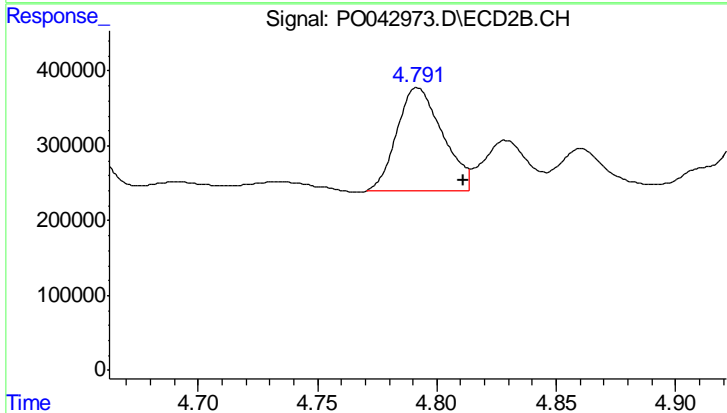
#5 AR-1016-3

R.T.: 4.628 min
 Delta R.T.: -0.017 min
 Response: 1714366
 Conc: 165.01 ng/ml m



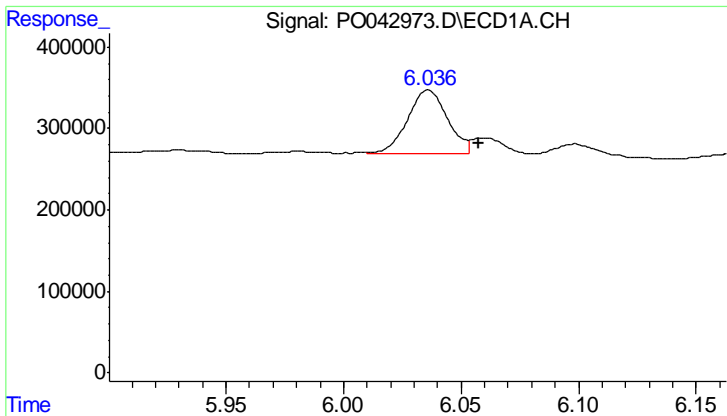
#6 AR-1016-4

R.T.: 5.806 min
 Delta R.T.: -0.021 min
 Response: 1093410
 Conc: 153.90 ng/ml m



#6 AR-1016-4

R.T.: 4.791 min
 Delta R.T.: -0.019 min
 Response: 1859148
 Conc: 167.41 ng/ml m



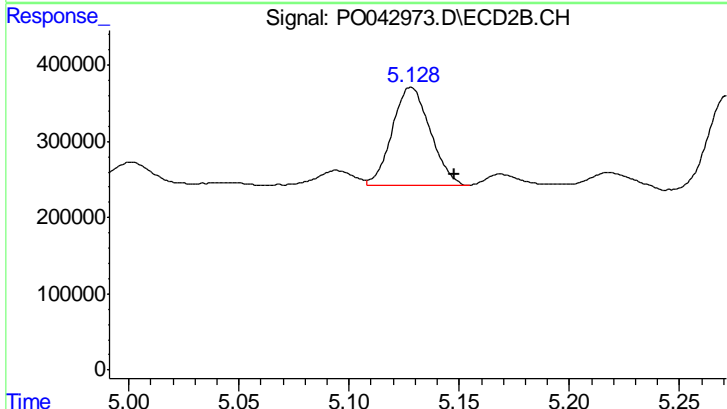
#7 AR-1016-5

R.T.: 6.036 min
 Delta R.T.: -0.022 min
 Response: 923331
 Conc: 128.26 ng/ml

Instrument :
 ECD_O
 ClientSampleId :
 SB-07-08-10MSD

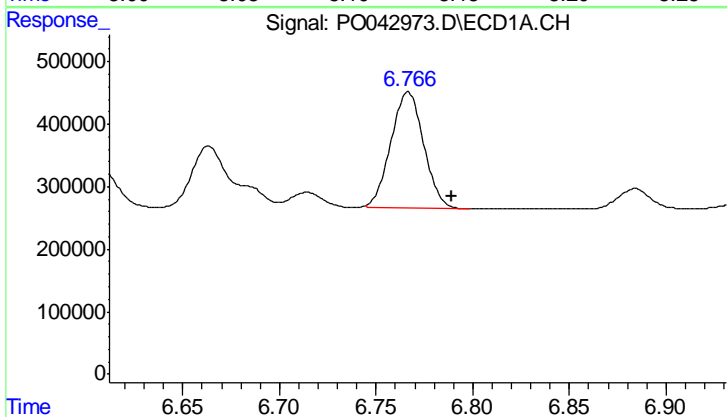
Manual Integrations
 APPROVED

ugo
 3/13/2018 11:07:58 AM



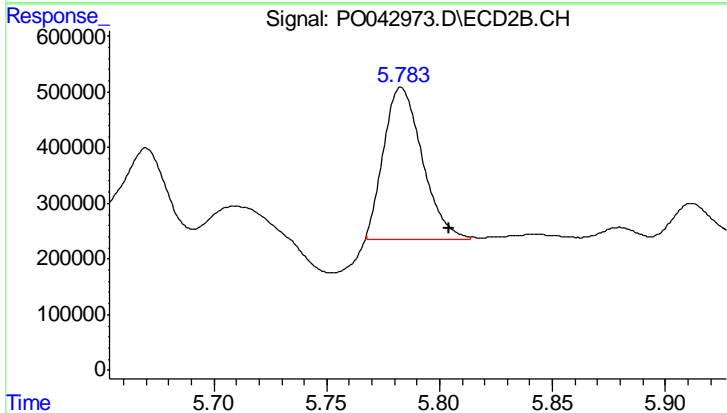
#7 AR-1016-5

R.T.: 5.128 min
 Delta R.T.: -0.020 min
 Response: 1553228
 Conc: 146.94 ng/ml



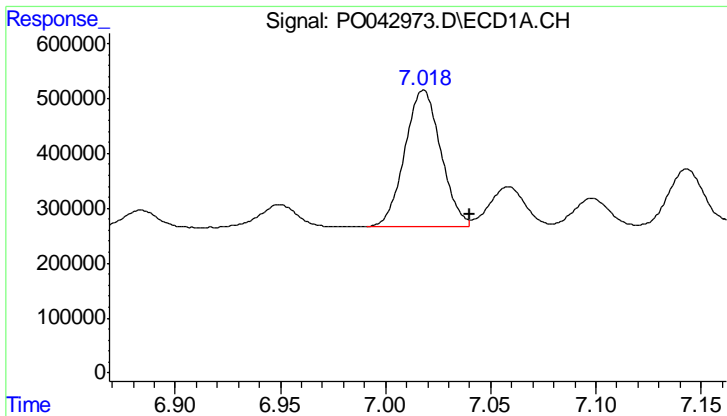
#31 AR-1260-1

R.T.: 6.767 min
 Delta R.T.: -0.023 min
 Response: 2190753
 Conc: 159.24 ng/ml



#31 AR-1260-1

R.T.: 5.783 min
 Delta R.T.: -0.022 min
 Response: 3263978
 Conc: 135.20 ng/ml m



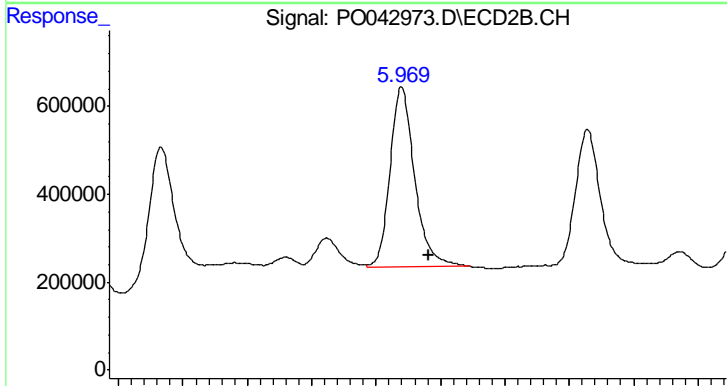
#32 AR-1260-2

R.T.: 7.018 min
 Delta R.T.: -0.022 min
 Response: 2957263
 Conc: 161.67 ng/ml

Instrument :
 ECD_O
 ClientSampled :
 SB-07-08-10MSD

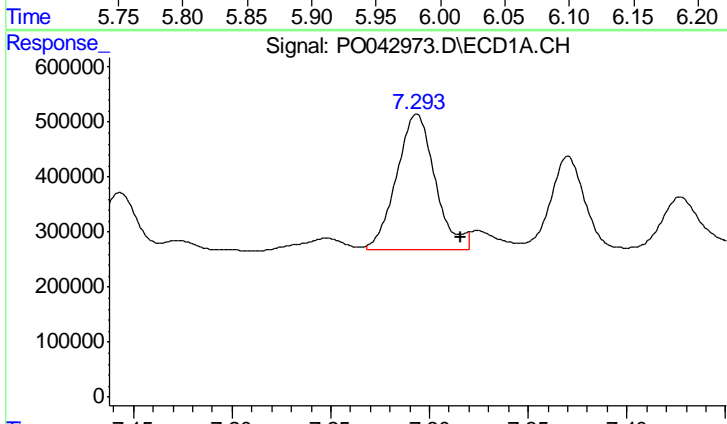
Manual Integrations
 APPROVED

ugo
 3/13/2018 11:07:58 AM



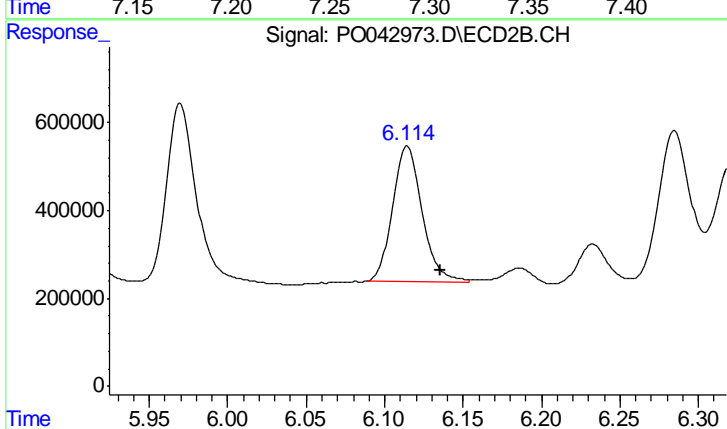
#32 AR-1260-2

R.T.: 5.969 min
 Delta R.T.: -0.022 min
 Response: 5392296
 Conc: 160.52 ng/ml m



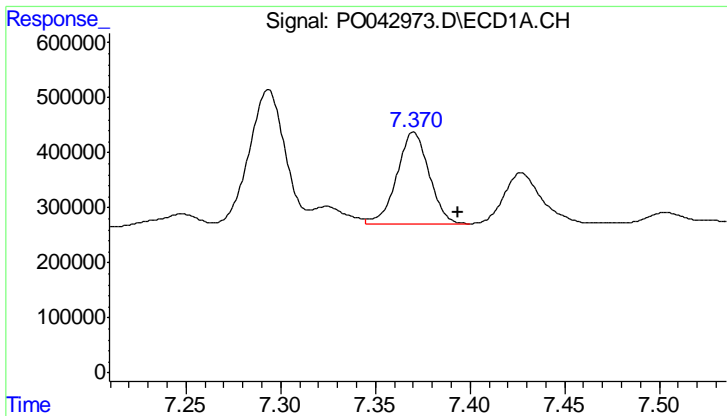
#33 AR-1260-3

R.T.: 7.293 min
 Delta R.T.: -0.022 min
 Response: 3305616
 Conc: 159.09 ng/ml m



#33 AR-1260-3

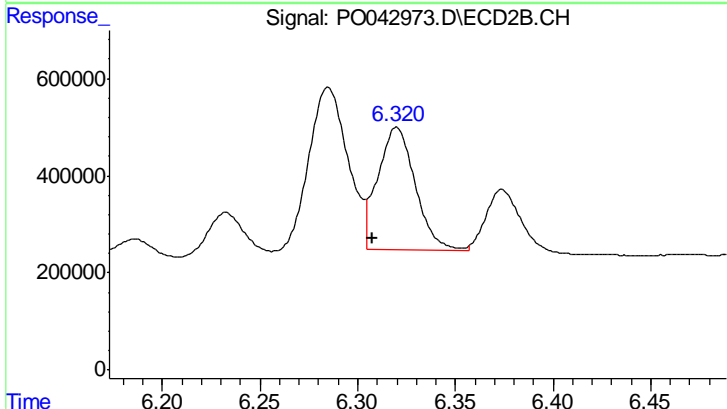
R.T.: 6.114 min
 Delta R.T.: -0.022 min
 Response: 4126827
 Conc: 144.97 ng/ml m



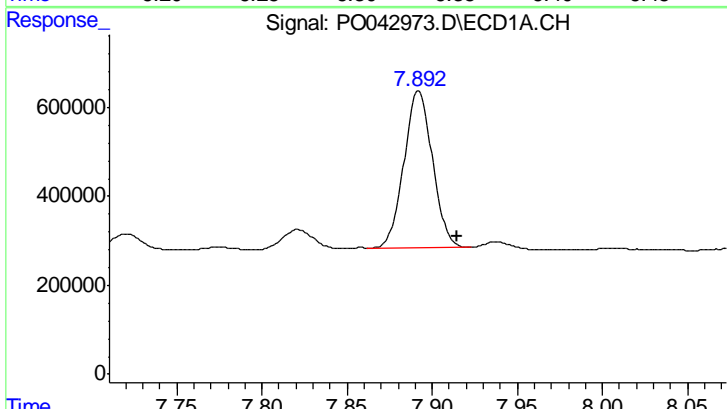
#34 AR-1260-4
 R.T.: 7.370 min
 Delta R.T.: -0.024 min
 Response: 1974572
 Conc: 133.41 ng/ml

Instrument :
 ECD_O
ClientSampled :
 SB-07-08-10MSD

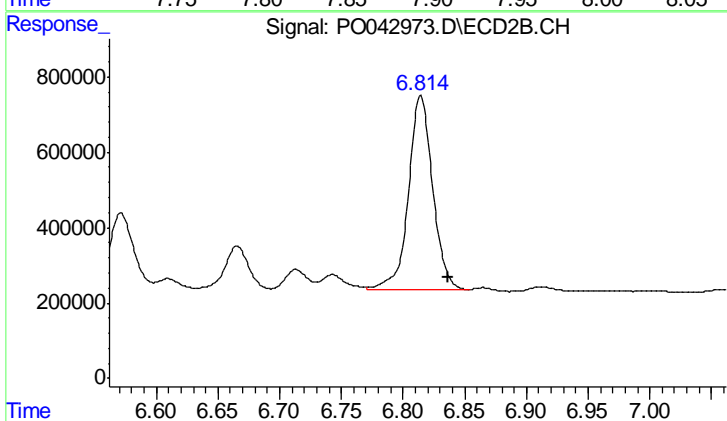
Manual Integrations
APPROVED
 ugo
 3/13/2018 11:07:58 AM



#34 AR-1260-4
 R.T.: 6.320 min
 Delta R.T.: 0.012 min
 Response: 3349862
 Conc: 97.99 ng/ml m



#35 AR-1260-5
 R.T.: 7.892 min
 Delta R.T.: -0.023 min
 Response: 4107798
 Conc: 121.52 ng/ml



#35 AR-1260-5
 R.T.: 6.814 min
 Delta R.T.: -0.022 min
 Response: 7001722
 Conc: 103.46 ng/ml