

Data Path : Z:\pestpcbsrv\HPCHEM1\ECD\_0\Data\P0031219\  
 Data File : P0054344.D  
 Signal(s) : Signal #1: ECD1A.CH Signal #2: ECD2B.CH  
 Acq On : 12 Mar 2019 11:24  
 Operator : SM/SJ  
 Sample : K1785-01RE  
 Misc :  
 ALS Vial : 4 Sample Multiplier: 1

Instrument :  
 ECD\_0  
 ClientSampleId :  
 SD4-0.0-0.5RE

Integration File signal 1: autoint1.e  
 Integration File signal 2: autoint2.e  
 Quant Time: Mar 13 01:09:11 2019  
 Quant Method : Z:\pestpcbsrv\HPCHEM1\ECD\_0\methods\P0031119.M  
 Quant Title : GC EXTRACTABLES  
 QLast Update : Mon Mar 11 14:40:27 2019  
 Response via : Initial Calibration  
 Integrator: ChemStation 6890 Scale Mode: Small noise peaks clipped

Volume Inj. : 2 µl  
 Signal #1 Phase : ZB-MR1 Signal #2 Phase: ZB-MR2  
 Signal #1 Info : 30Mx0.32mmx 0.50µ Signal #2 Info : 30M x 0.32mm x 0.25µm

Compound	RT#1	RT#2	Resp#1	Resp#2	ng/ml	ng/ml
----------	------	------	--------	--------	-------	-------

-----  
 System Monitoring Compounds

1) SA Tetrachlo...	4.018	3.107	55853915	4050009	16.252	14.461
2) SA Decachlor...	9.322	7.668	11232259	2685386	8.917	9.544

Target Compounds  
 -----

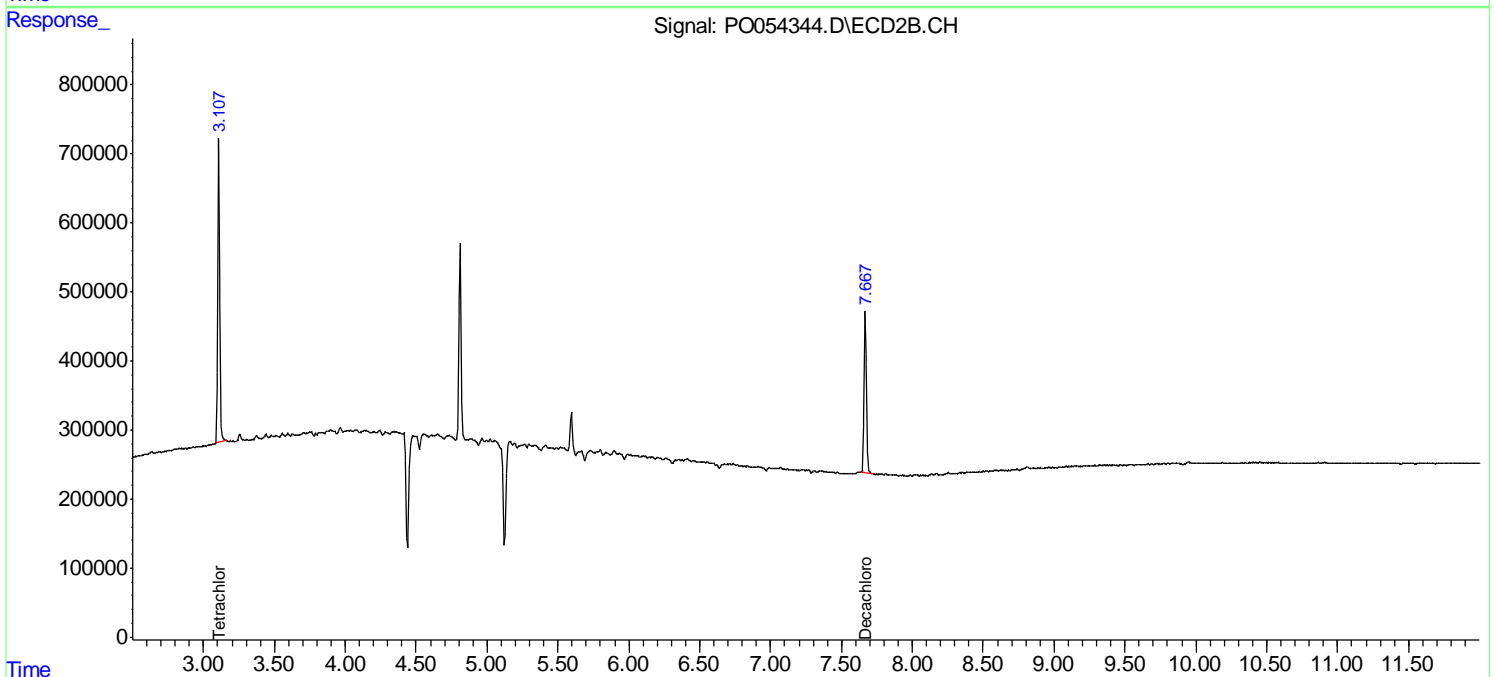
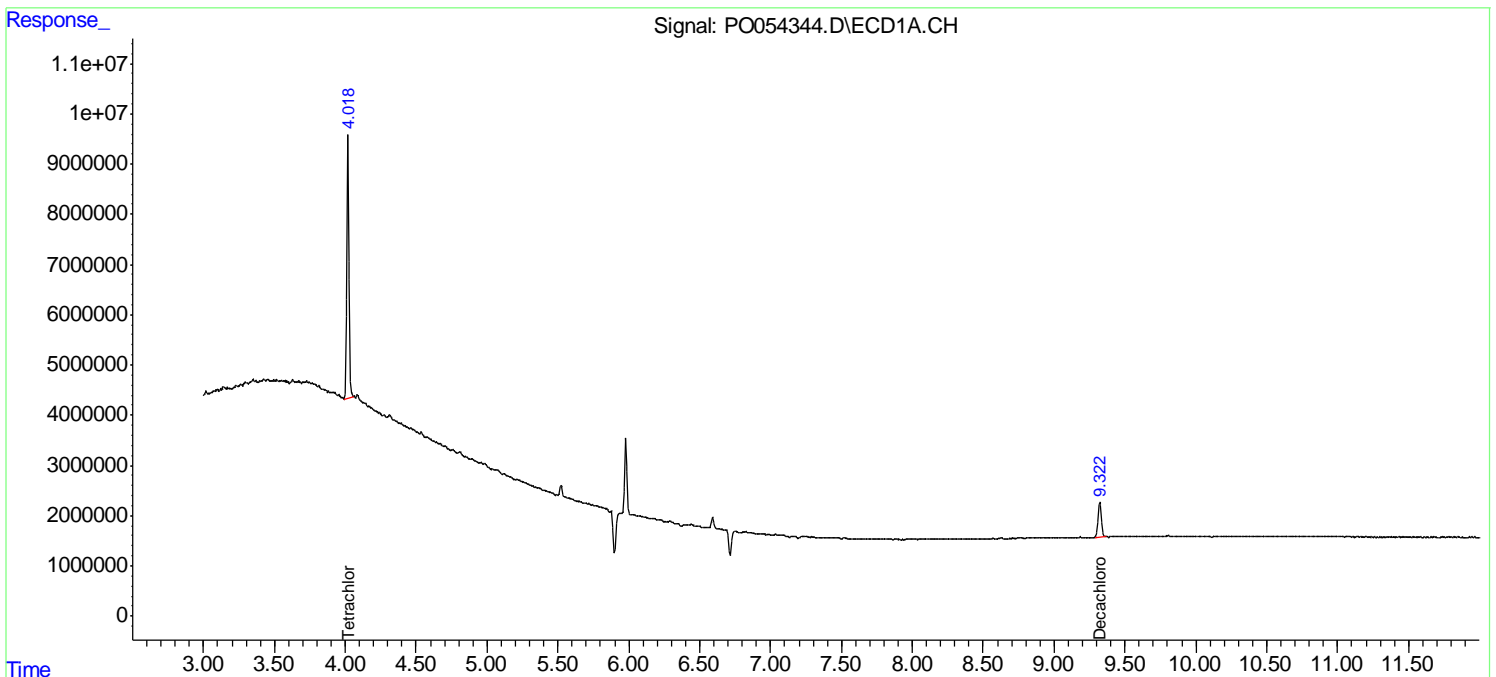
(f)=RT Delta > 1/2 Window (#)=Amounts differ by > 25% (m)=manual int.

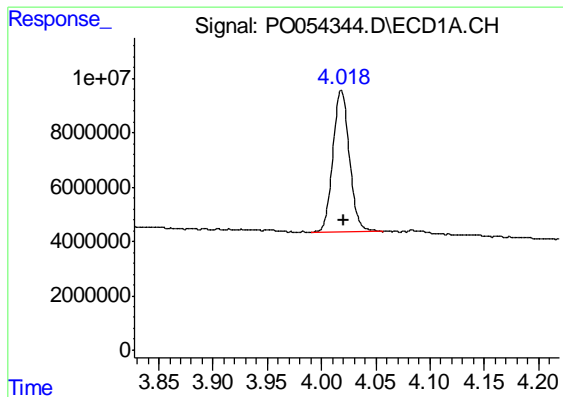
Data Path : Z:\pestpcbsrv\HPCHEM1\ECD\_O\Data\P0031219\  
 Data File : P0054344.D  
 Signal(s) : Signal #1: ECD1A.CH Signal #2: ECD2B.CH  
 Acq On : 12 Mar 2019 11:24  
 Operator : SM/SJ  
 Sample : K1785-01RE  
 Misc :  
 ALS Vial : 4 Sample Multiplier: 1

Instrument :  
 ECD\_O  
 ClientSampleId :  
 SD4-0.0-0.5RE

Integration File signal 1: autoint1.e  
 Integration File signal 2: autoint2.e  
 Quant Time: Mar 13 01:09:11 2019  
 Quant Method : Z:\pestpcbsrv\HPCHEM1\ECD\_O\methods\P0031119.M  
 Quant Title : GC EXTRACTABLES  
 QLast Update : Mon Mar 11 14:40:27 2019  
 Response via : Initial Calibration  
 Integrator: ChemStation 6890 Scale Mode: Small noise peaks clipped

Volume Inj. : 2 µl  
 Signal #1 Phase : ZB-MR1 Signal #2 Phase: ZB-MR2  
 Signal #1 Info : 30Mx0.32mmx 0.50µ Signal #2 Info : 30M x 0.32mm x 0.25µm

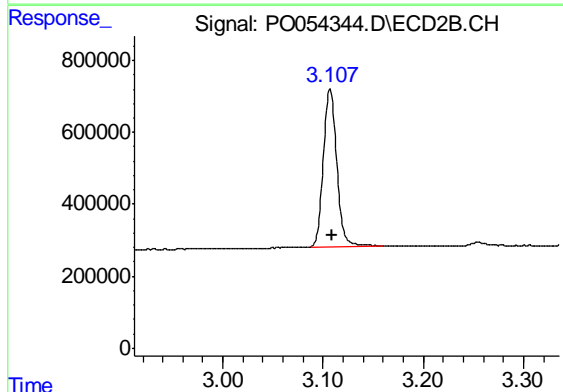




#1 Tetrachloro-m-xylene

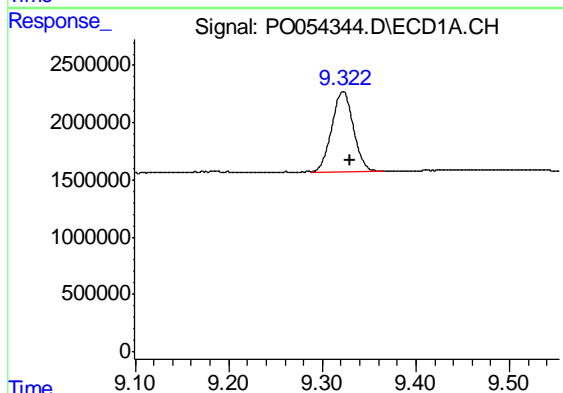
R.T.: 4.018 min  
 Delta R.T.: -0.003 min  
 Response: 55853915  
 Conc: 16.25 ng/ml

Instrument :  
 ECD\_O  
 ClientSampleId :  
 SD4-0.0-0.5RE



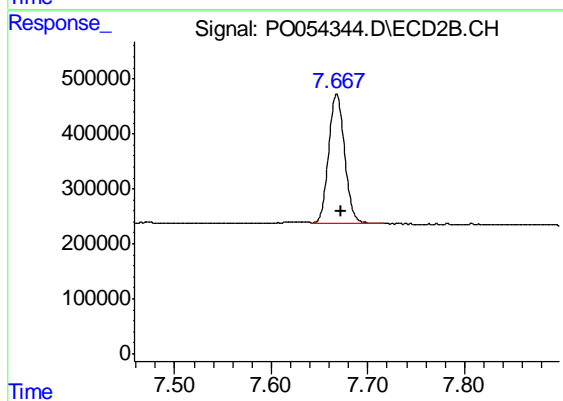
#1 Tetrachloro-m-xylene

R.T.: 3.107 min  
 Delta R.T.: -0.002 min  
 Response: 4050009  
 Conc: 14.46 ng/ml



#2 Decachlorobiphenyl

R.T.: 9.322 min  
 Delta R.T.: -0.008 min  
 Response: 11232259  
 Conc: 8.92 ng/ml



#2 Decachlorobiphenyl

R.T.: 7.668 min  
 Delta R.T.: -0.005 min  
 Response: 2685386  
 Conc: 9.54 ng/ml