

Data Path : P:\HPCHEM1\ECD\_D\Data\PD031318\  
 Data File : PD046149.D  
 Signal(s) : Signal #1: ECD1A.CH Signal #2: ECD2B.CH  
 Acq On : 13 Mar 2018 12:27  
 Operator : UA/AJ  
 Sample : INDA355  
 Misc :  
 ALS Vial : 8 Sample Multiplier: 1

Instrument :  
 ECD\_O  
 ClientSampleId :  
 INDA355

Integration File signal 1: autoint1.e  
 Integration File signal 2: autoint2.e  
 Quant Time: Mar 14 01:24:50 2018  
 Quant Method : P:\HPCHEM1\ECD\_D\Method\PD030518CLP.M  
 Quant Title : GC Extractables  
 QLast Update : Tue Mar 06 02:40:32 2018  
 Response via : Initial Calibration  
 Integrator: ChemStation 6890 Scale Mode: Large solvent peaks clipped

Volume Inj. : 1 µl  
 Signal #1 Phase : ZB-MR2 Signal #2 Phase: ZB-MR1  
 Signal #1 Info : 30M x 0.32mm x0.2 Signal #2 Info : 30M x 0.32mm x 0.50µm

Compound	RT#1	RT#2	Resp#1	Resp#2	ng/ml	ng/ml
-----						
System Monitoring Compounds						
1) SA Tetrachlo...	3.234	3.729	24563009	483.9E6	19.647	22.898
27) SA Decachlor...	7.843	8.618	48362370	750.2E6	37.008	43.531
Target Compounds						
2) A alpha-BHC	3.659	4.091	39017824	765.4E6	19.931	23.169
3) MA gamma-BHC...	3.930	4.360	36032955	691.6E6	19.835	22.639
4) MA Heptachlor	4.206	4.857	34909721	725.8E6	19.064	22.356
6) B beta-BHC	4.206f	4.513	34909721	7645961	44.705	0.546 #
7) B delta-BHC	0.000	4.734	0	18252404	N.D.	0.561
9) A Endosulfan I	5.192	5.864	30361802	594.2E6	19.477	22.055
11) B cis-Chlor...	5.192f	5.864f	30361802	594.2E6	18.875	20.935
12) B 4,4'-DDE	0.000	5.986	0	4383925	N.D.	0.161
13) MA Dieldrin	5.428	6.113	67672191	1224.4E6	39.550	44.265
14) MA Endrin	5.678	6.322	53468084	968.0E6	35.277	41.983
15) B Endosulfa...	0.000	6.455f	0	989.1E6	N.D.	43.363
16) A 4,4'-DDD	5.816	6.455	53952131	989.1E6	38.585	45.032
17) MA 4,4'-DDT	6.047	6.750	52282612	925.4E6	36.103	42.494
18) B Endrin al...	6.047f	6.644	52282612	39086699	42.715	1.980 #
20) A Methoxychlor	6.595	7.208	132.9E6	2090.8E6	176.810	211.965
21) B Endrin ke...	6.806	7.318	3680306	50658581	2.291	2.424
22) Toxaphene-1	5.428	6.322	67672191	968.0E6	8380.039	4645.744 #
23) Toxaphene-2	6.047	6.455	52282612	989.1E6	2041.770	3000.925 #
25) Toxaphene-4	6.595	6.750	132.9E6	925.4E6	5828.503	1520.505 #
26) Toxaphene-5	0.000	7.270	0	6370425	N.D.	26.445
-----						

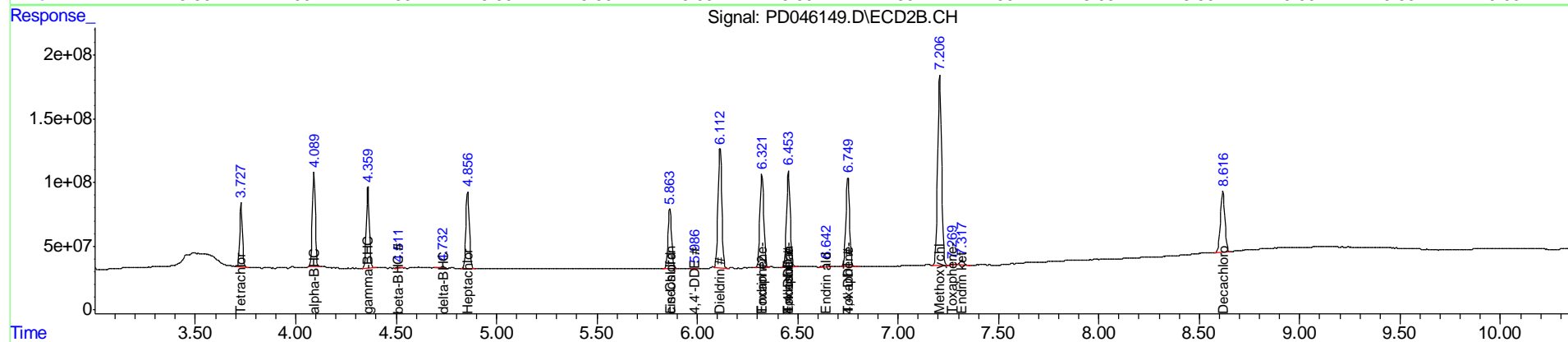
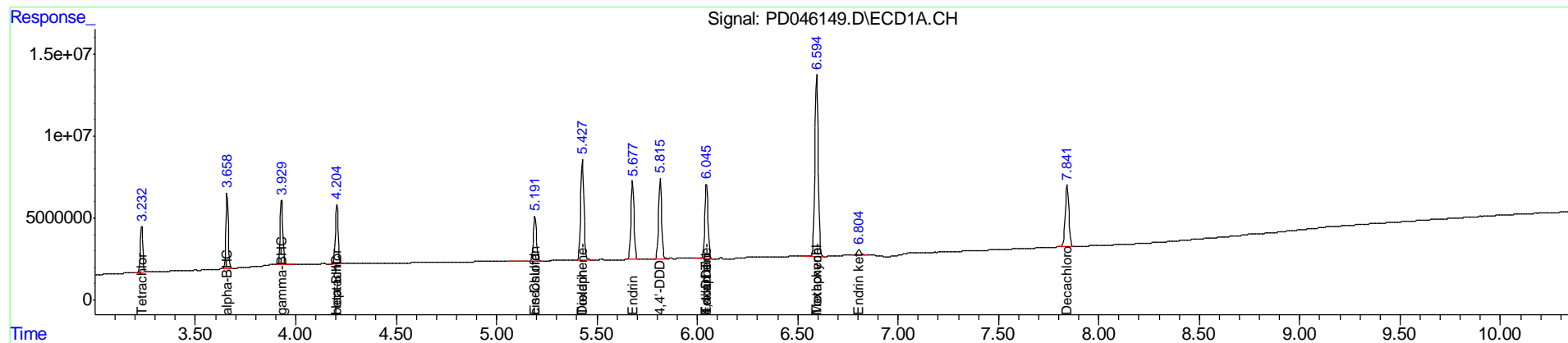
(f)=RT Delta > 1/2 Window (#)=Amounts differ by > 25% (m)=manual int.

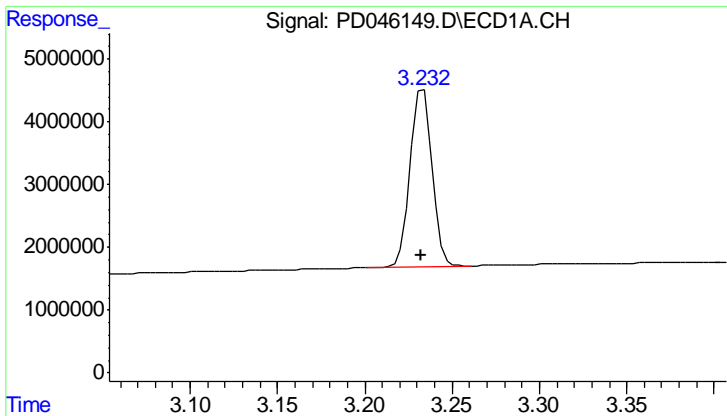
Data Path : P:\HPCHEM1\ECD\_D\Data\PD031318\  
 Data File : PD046149.D  
 Signal(s) : Signal #1: ECD1A.CH Signal #2: ECD2B.CH  
 Acq On : 13 Mar 2018 12:27  
 Operator : UA/AJ  
 Sample : INDA355  
 Misc :  
 ALS Vial : 8 Sample Multiplier: 1

Instrument :  
 ECD\_O  
 Client Sampled :  
 INDA355

Integration File signal 1: autoint1.e  
 Integration File signal 2: autoint2.e  
 Quant Time: Mar 14 01:24:50 2018  
 Quant Method : P:\HPCHEM1\ECD\_D\Method\PD030518CLP.M  
 Quant Title : GC Extractables  
 QLast Update : Tue Mar 06 02:40:32 2018  
 Response via : Initial Calibration  
 Integrator: ChemStation 6890 Scale Mode: Large solvent peaks clipped

Volume Inj. : 1 µl  
 Signal #1 Phase : ZB-MR2 Signal #2 Phase: ZB-MR1  
 Signal #1 Info : 30M x 0.32mm x0.2 Signal #2 Info : 30M x 0.32mm x 0.50µm

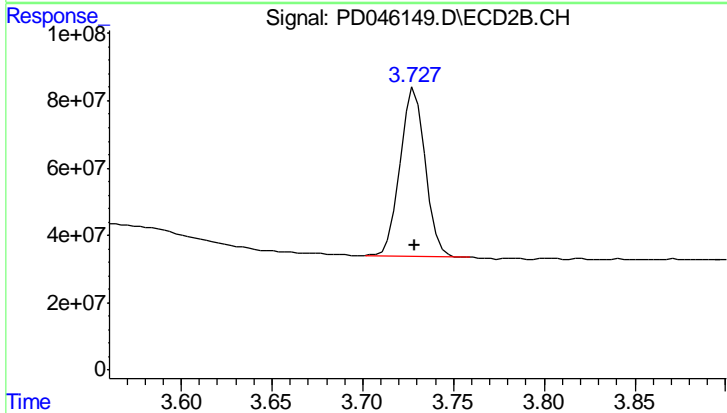




#1 Tetrachloro-m-xylene

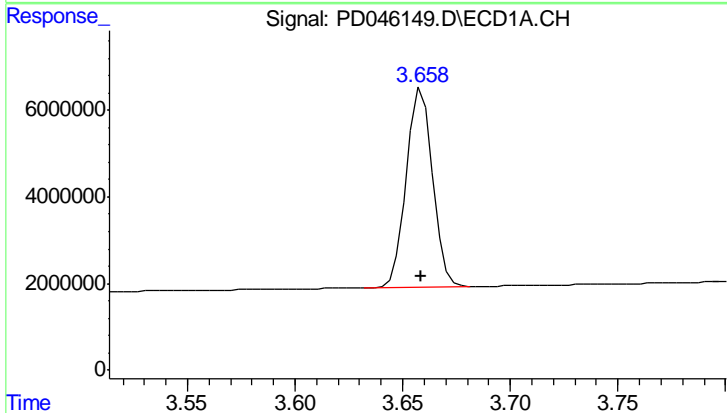
R.T.: 3.234 min  
 Delta R.T.: 0.001 min  
 Response: 24563009  
 Conc: 19.65 ng/ml

Instrument :  
 ECD\_O  
 ClientSampleId :  
 INDA355



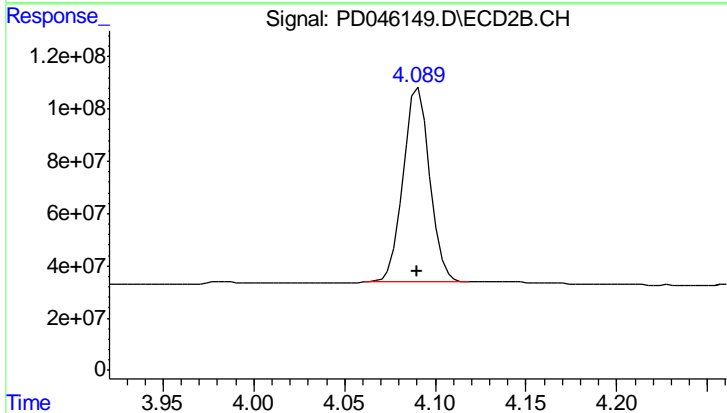
#1 Tetrachloro-m-xylene

R.T.: 3.729 min  
 Delta R.T.: 0.000 min  
 Response: 483925855  
 Conc: 22.90 ng/ml



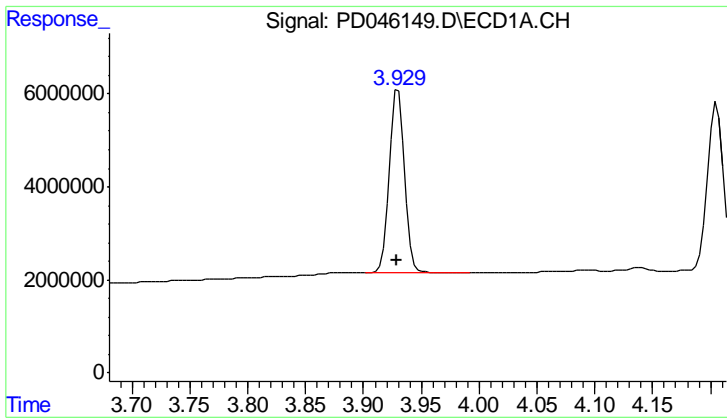
#2 alpha-BHC

R.T.: 3.659 min  
 Delta R.T.: 0.000 min  
 Response: 39017824  
 Conc: 19.93 ng/ml



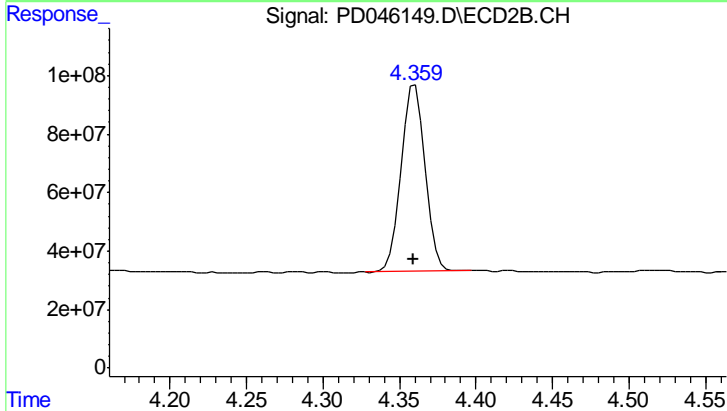
#2 alpha-BHC

R.T.: 4.091 min  
 Delta R.T.: 0.000 min  
 Response: 765372429  
 Conc: 23.17 ng/ml

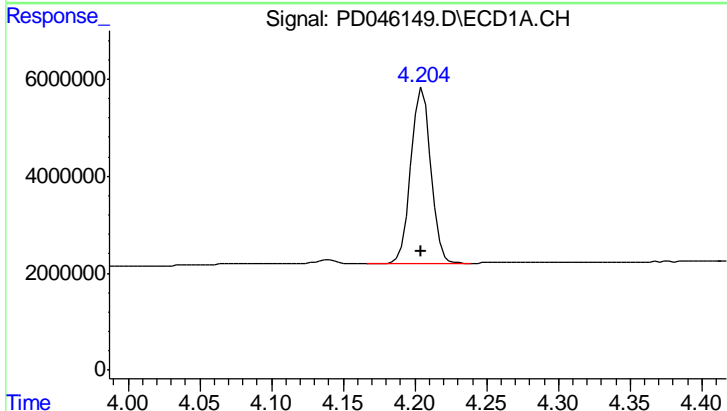


#3 gamma-BHC (Lindane)  
 R.T.: 3.930 min  
 Delta R.T.: 0.000 min  
 Response: 36032955  
 Conc: 19.83 ng/ml

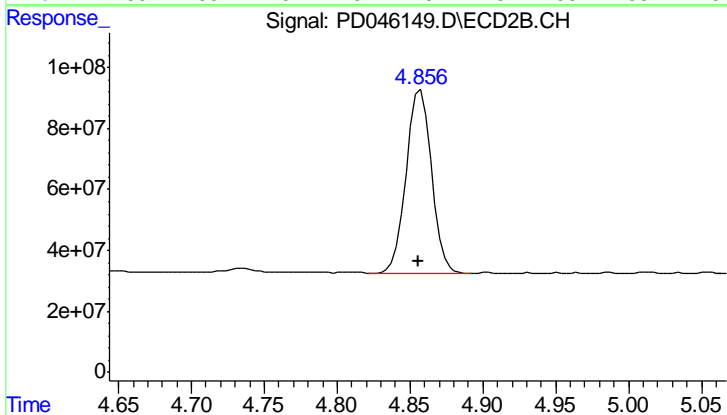
Instrument :  
 ECD\_O  
 ClientSampleId :  
 INDA355



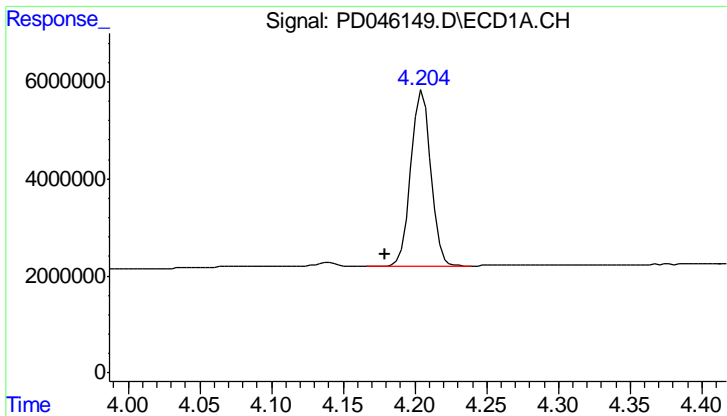
#3 gamma-BHC (Lindane)  
 R.T.: 4.360 min  
 Delta R.T.: 0.000 min  
 Response: 691634097  
 Conc: 22.64 ng/ml



#4 Heptachlor  
 R.T.: 4.206 min  
 Delta R.T.: 0.002 min  
 Response: 34909721  
 Conc: 19.06 ng/ml



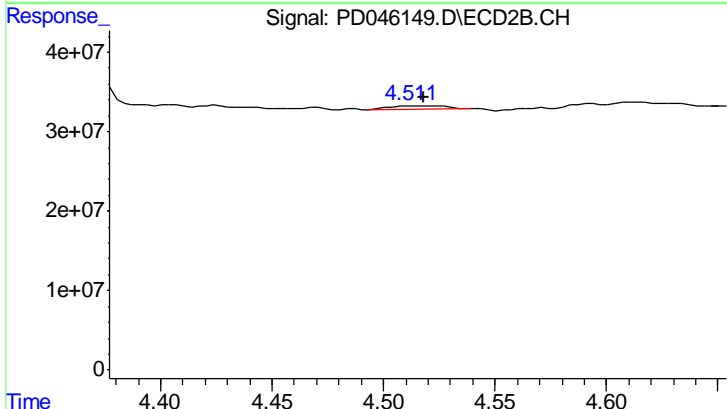
#4 Heptachlor  
 R.T.: 4.857 min  
 Delta R.T.: 0.001 min  
 Response: 725847636  
 Conc: 22.36 ng/ml



#6 beta-BHC

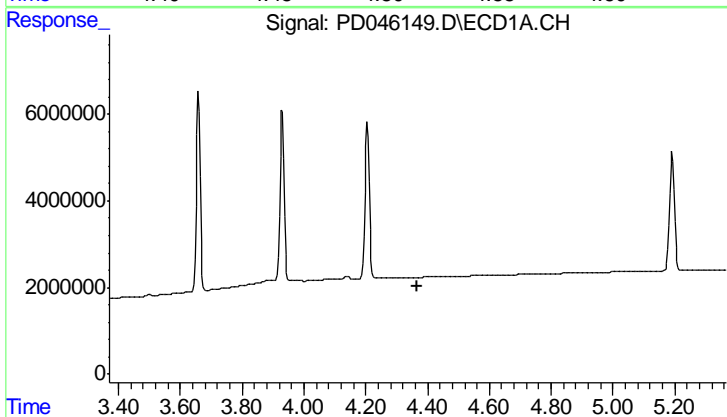
R.T.: 4.206 min  
 Delta R.T.: 0.026 min  
 Response: 34909721  
 Conc: 44.70 ng/ml

Instrument :  
 ECD\_O  
 ClientSampleId :  
 INDA355



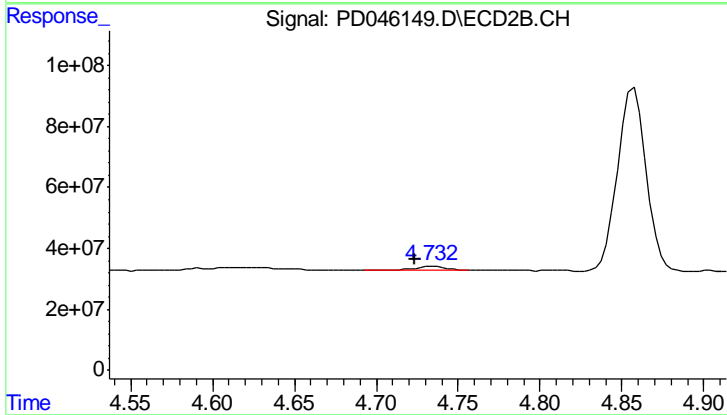
#6 beta-BHC

R.T.: 4.513 min  
 Delta R.T.: -0.006 min  
 Response: 7645961  
 Conc: 0.55 ng/ml



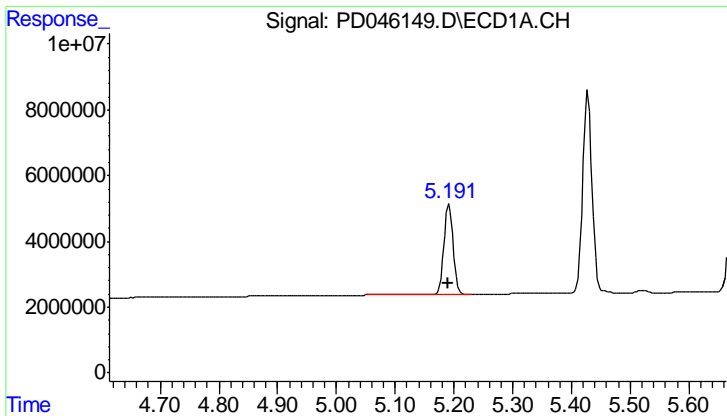
#7 delta-BHC

R.T.: 0.000 min  
 Exp R.T. : 4.368 min  
 Response: 0  
 Conc: N.D.



#7 delta-BHC

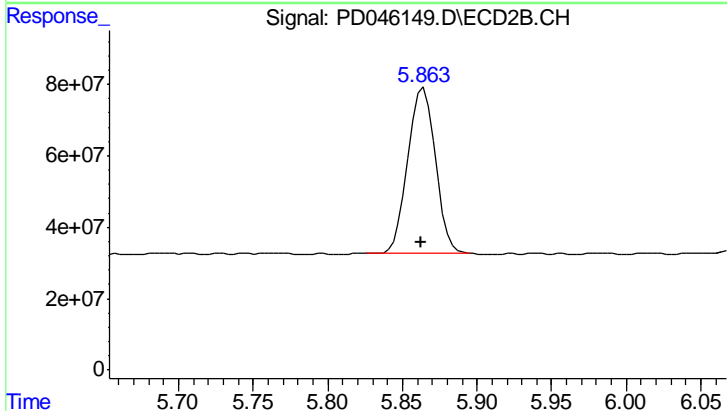
R.T.: 4.734 min  
 Delta R.T.: 0.010 min  
 Response: 18252404  
 Conc: 0.56 ng/ml



#9 Endosulfan I

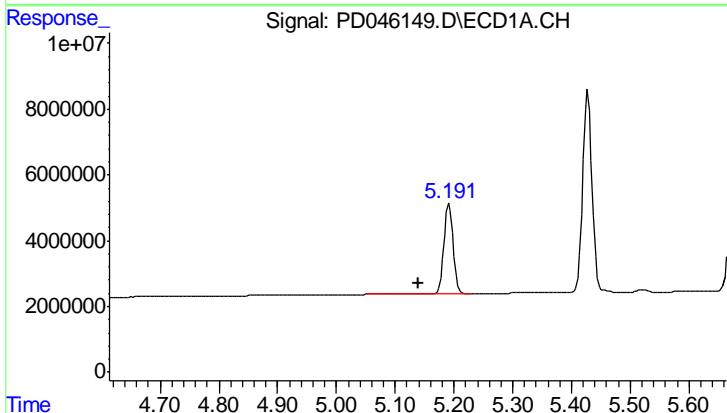
R.T.: 5.192 min  
 Delta R.T.: 0.002 min  
 Response: 30361802  
 Conc: 19.48 ng/ml

Instrument :  
 ECD\_O  
 ClientSampled :  
 INDA355



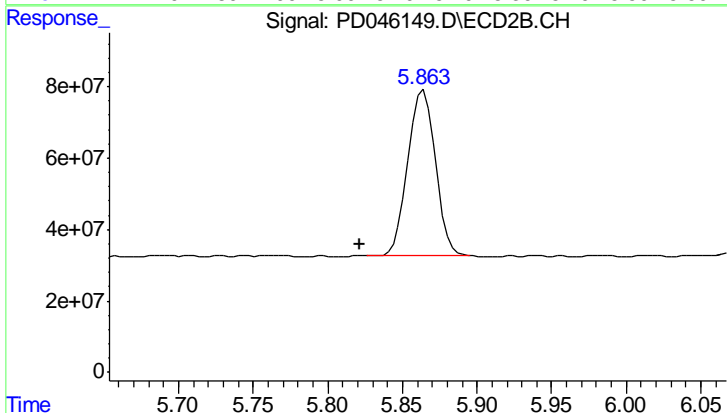
#9 Endosulfan I

R.T.: 5.864 min  
 Delta R.T.: 0.001 min  
 Response: 594200912  
 Conc: 22.06 ng/ml



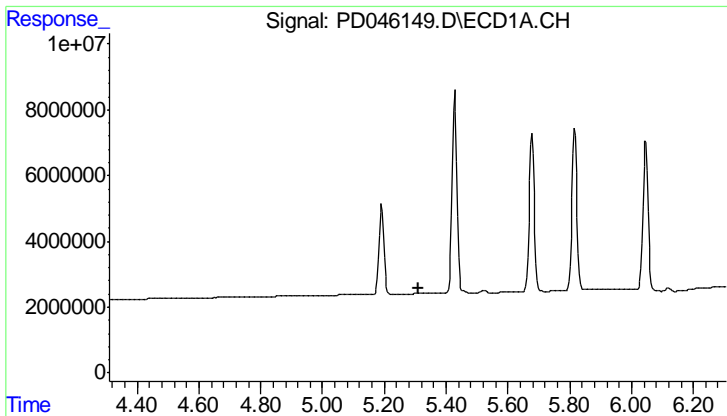
#11 cis-Chlordane

R.T.: 5.192 min  
 Delta R.T.: 0.052 min  
 Response: 30361802  
 Conc: 18.87 ng/ml



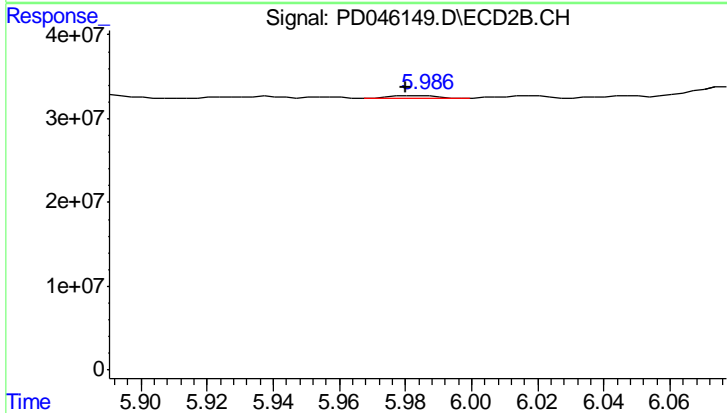
#11 cis-Chlordane

R.T.: 5.864 min  
 Delta R.T.: 0.043 min  
 Response: 594200912  
 Conc: 20.94 ng/ml

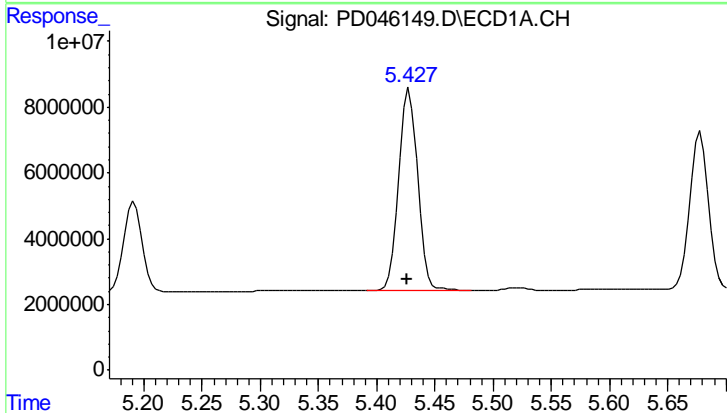


#12 4,4'-DDE  
 R.T.: 0.000 min  
 Exp R.T.: 5.309 min  
 Response: 0  
 Conc: N.D.

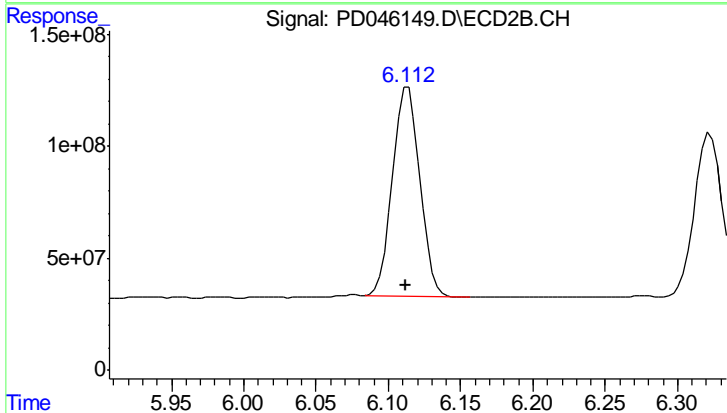
Instrument :  
 ECD\_O  
 ClientSampled :  
 INDA355



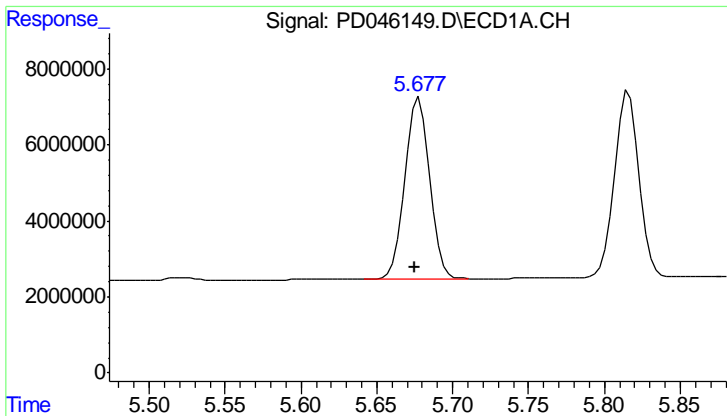
#12 4,4'-DDE  
 R.T.: 5.986 min  
 Delta R.T.: 0.006 min  
 Response: 4383925  
 Conc: 0.16 ng/ml



#13 Dieldrin  
 R.T.: 5.428 min  
 Delta R.T.: 0.003 min  
 Response: 67672191  
 Conc: 39.55 ng/ml



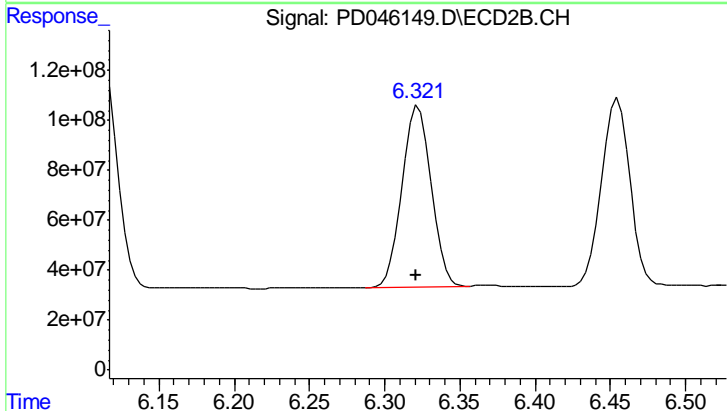
#13 Dieldrin  
 R.T.: 6.113 min  
 Delta R.T.: 0.002 min  
 Response: 1224370121  
 Conc: 44.26 ng/ml



#14 Endrin

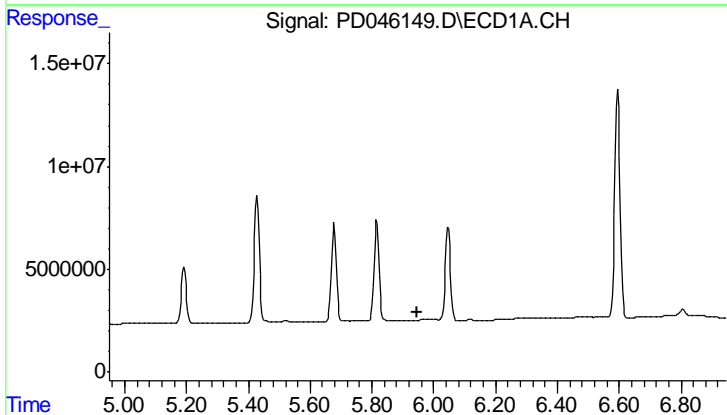
R.T.: 5.678 min  
 Delta R.T.: 0.003 min  
 Response: 53468084  
 Conc: 35.28 ng/ml

Instrument :  
 ECD\_O  
 ClientSampleId :  
 INDA355



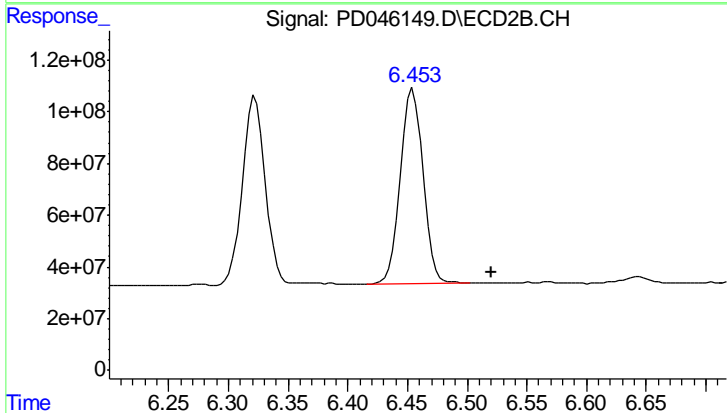
#14 Endrin

R.T.: 6.322 min  
 Delta R.T.: 0.002 min  
 Response: 967993512  
 Conc: 41.98 ng/ml



#15 Endosulfan II

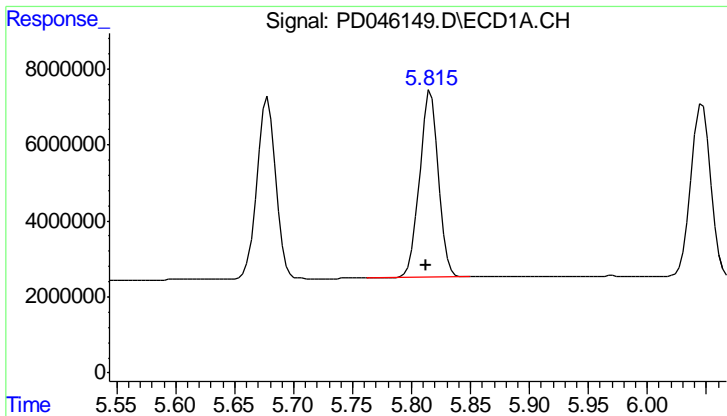
R.T.: 0.000 min  
 Exp R.T. : 5.948 min  
 Response: 0  
 Conc: N.D.



#15 Endosulfan II

R.T.: 6.455 min  
 Delta R.T.: -0.066 min  
 Response: 989081976  
 Conc: 43.36 ng/ml

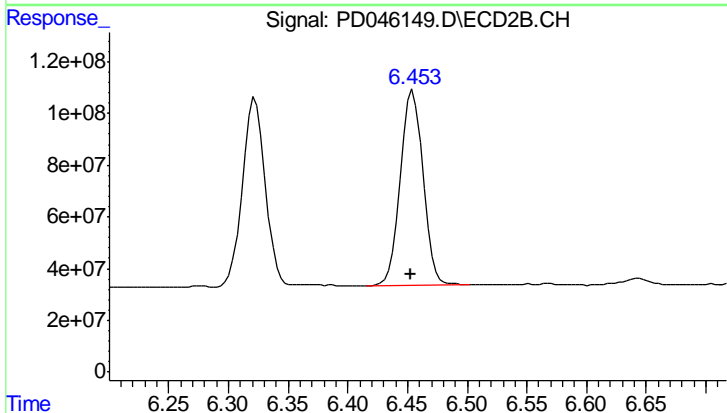




#16 4,4'-DDD

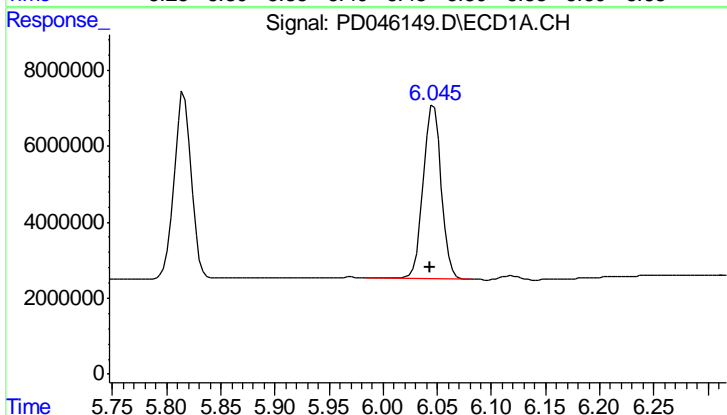
R.T.: 5.816 min  
 Delta R.T.: 0.003 min  
 Response: 53952131  
 Conc: 38.59 ng/ml

Instrument :  
 ECD\_O  
 ClientSampled :  
 INDA355



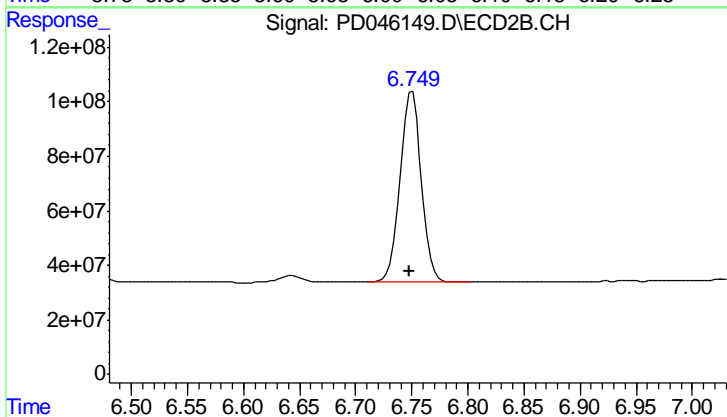
#16 4,4'-DDD

R.T.: 6.455 min  
 Delta R.T.: 0.002 min  
 Response: 989081976  
 Conc: 45.03 ng/ml



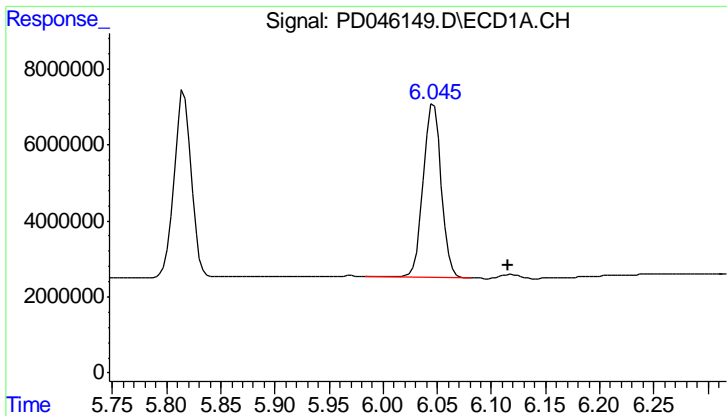
#17 4,4'-DDT

R.T.: 6.047 min  
 Delta R.T.: 0.003 min  
 Response: 52282612  
 Conc: 36.10 ng/ml



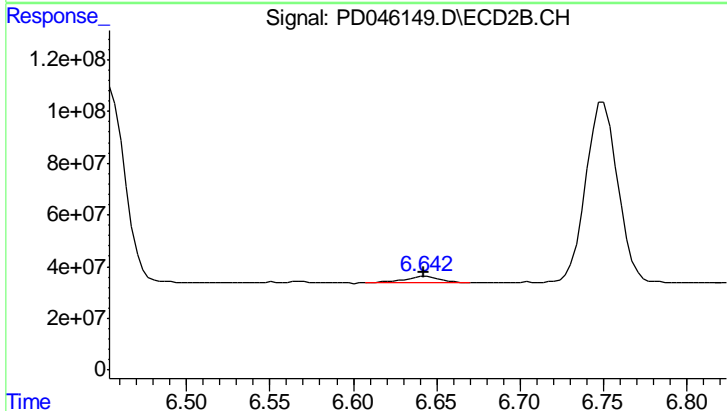
#17 4,4'-DDT

R.T.: 6.750 min  
 Delta R.T.: 0.002 min  
 Response: 925440661  
 Conc: 42.49 ng/ml

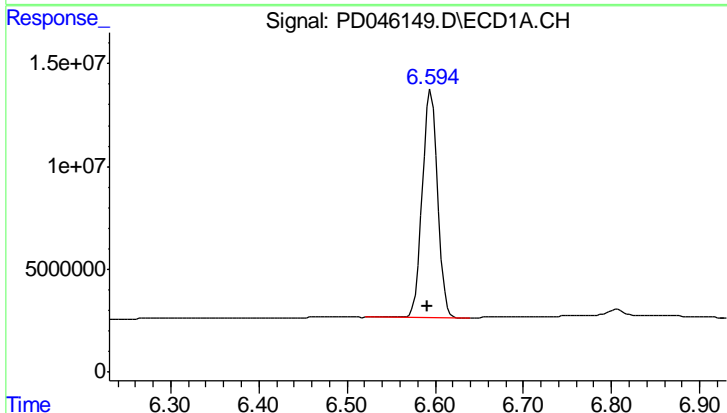


#18 Endrin aldehyde  
 R.T.: 6.047 min  
 Delta R.T.: -0.069 min  
 Response: 52282612  
 Conc: 42.72 ng/ml

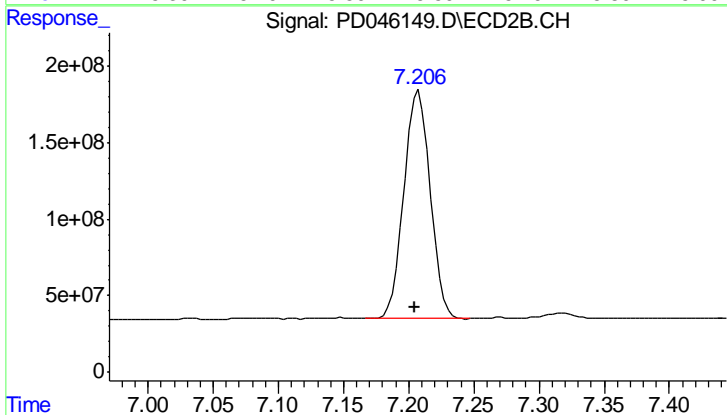
Instrument :  
 ECD\_O  
 ClientSampled :  
 INDA355



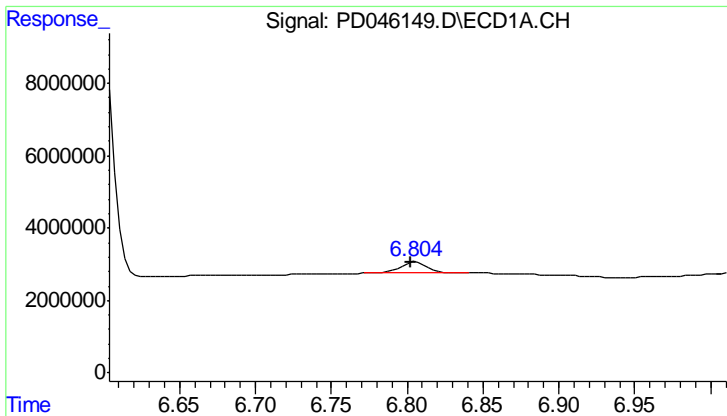
#18 Endrin aldehyde  
 R.T.: 6.644 min  
 Delta R.T.: 0.002 min  
 Response: 39086699  
 Conc: 1.98 ng/ml



#20 Methoxychlor  
 R.T.: 6.595 min  
 Delta R.T.: 0.003 min  
 Response: 13285639  
 Conc: 176.81 ng/ml



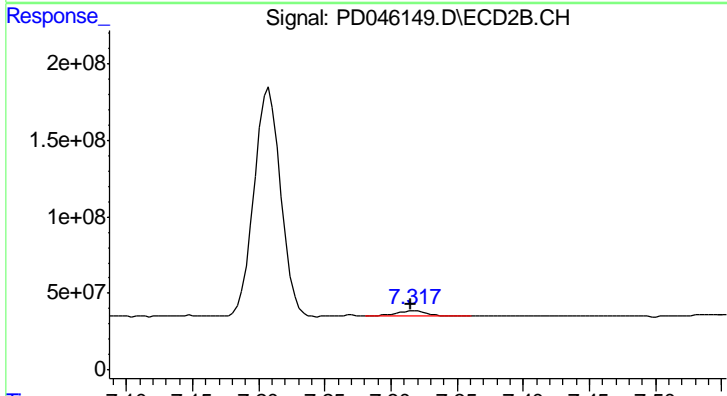
#20 Methoxychlor  
 R.T.: 7.208 min  
 Delta R.T.: 0.003 min  
 Response: 2090845922  
 Conc: 211.96 ng/ml



#21 Endrin ketone

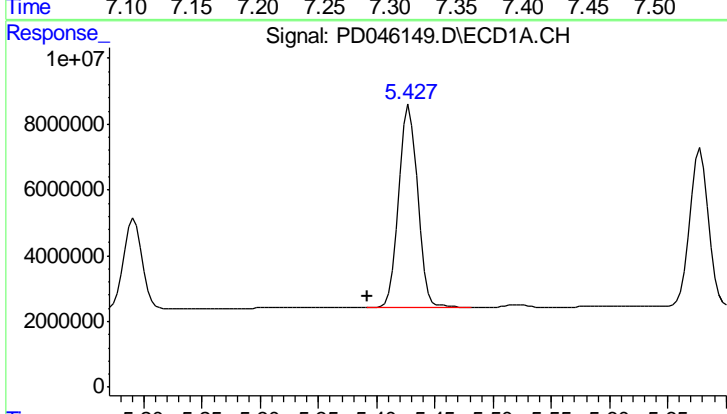
R.T.: 6.806 min  
 Delta R.T.: 0.003 min  
 Response: 3680306  
 Conc: 2.29 ng/ml

Instrument :  
 ECD\_O  
 ClientSampleId :  
 INDA355



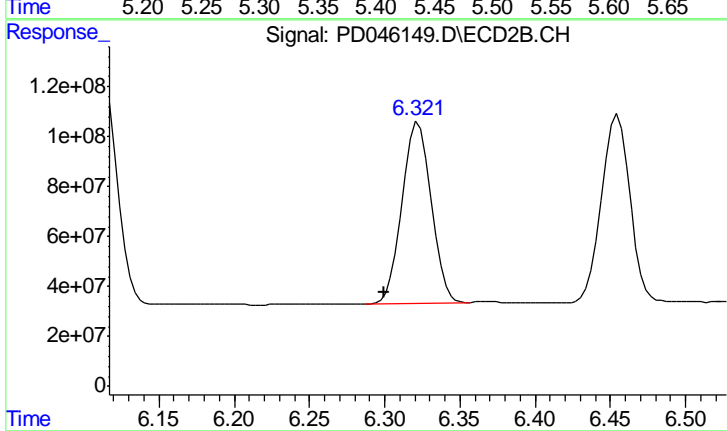
#21 Endrin ketone

R.T.: 7.318 min  
 Delta R.T.: 0.003 min  
 Response: 50658581  
 Conc: 2.42 ng/ml



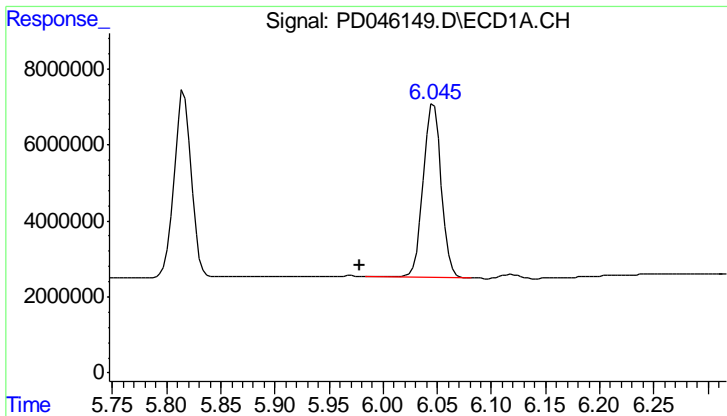
#22 Toxaphene-1

R.T.: 5.428 min  
 Delta R.T.: 0.036 min  
 Response: 67672191  
 Conc: 8380.04 ng/ml



#22 Toxaphene-1

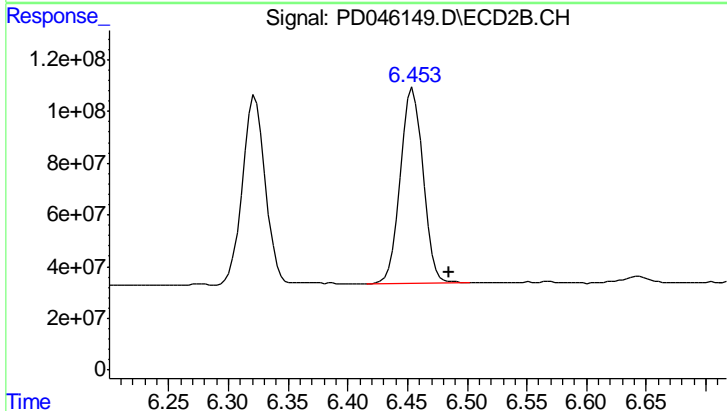
R.T.: 6.322 min  
 Delta R.T.: 0.023 min  
 Response: 967993512  
 Conc: 4645.74 ng/ml



#23 Toxaphene-2

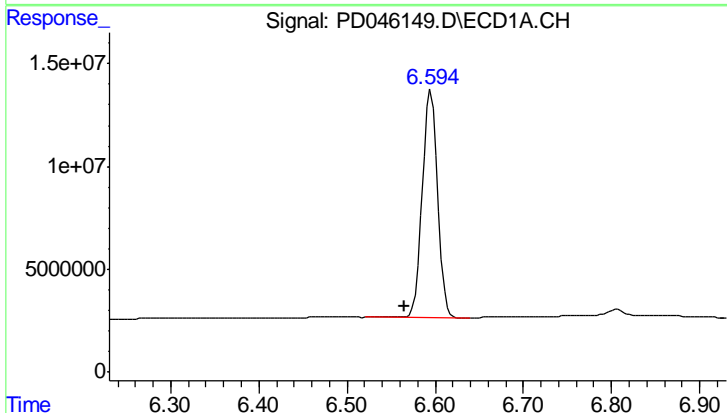
R.T.: 6.047 min  
 Delta R.T.: 0.068 min  
 Response: 52282612  
 Conc: 2041.77 ng/ml

Instrument :  
 ECD\_O  
 ClientSampleId :  
 INDA355



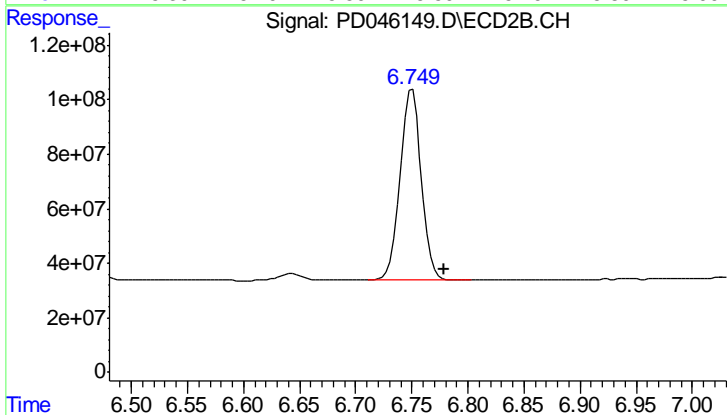
#23 Toxaphene-2

R.T.: 6.455 min  
 Delta R.T.: -0.030 min  
 Response: 989081976  
 Conc: 3000.93 ng/ml



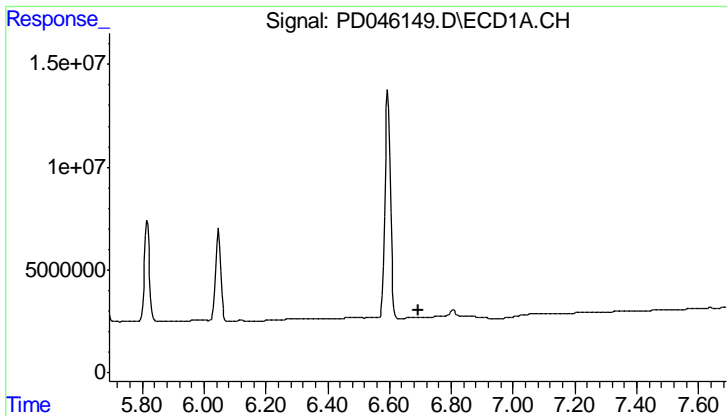
#25 Toxaphene-4

R.T.: 6.595 min  
 Delta R.T.: 0.030 min  
 Response: 132855639  
 Conc: 5828.50 ng/ml



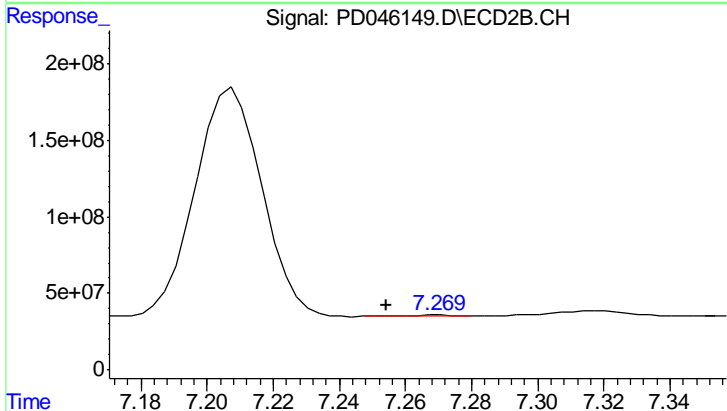
#25 Toxaphene-4

R.T.: 6.750 min  
 Delta R.T.: -0.028 min  
 Response: 925440661  
 Conc: 1520.51 ng/ml

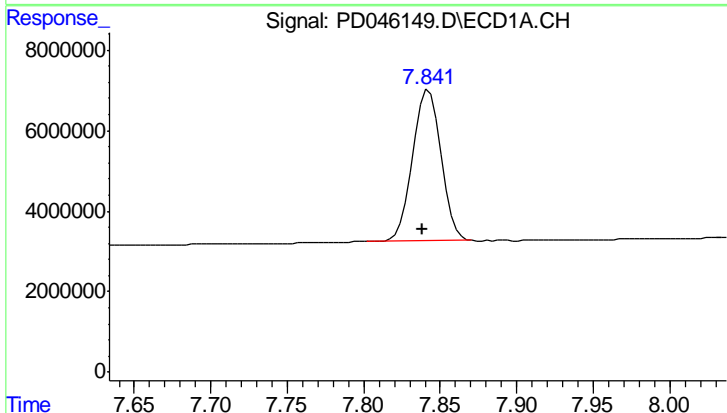


#26 Toxaphene-5  
 R.T.: 0.000 min  
 Exp R.T.: 6.692 min  
 Response: 0  
 Conc: N.D.

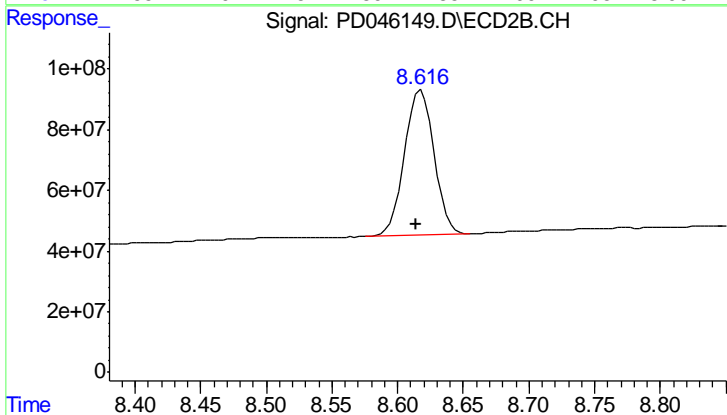
Instrument :  
 ECD\_O  
 ClientSampled :  
 INDA355



#26 Toxaphene-5  
 R.T.: 7.270 min  
 Delta R.T.: 0.016 min  
 Response: 6370425  
 Conc: 26.45 ng/ml



#27 Decachlorobiphenyl  
 R.T.: 7.843 min  
 Delta R.T.: 0.004 min  
 Response: 48362370  
 Conc: 37.01 ng/ml



#27 Decachlorobiphenyl  
 R.T.: 8.618 min  
 Delta R.T.: 0.004 min  
 Response: 750156405  
 Conc: 43.53 ng/ml