

Data Path : P:\HPCHEM1\ECD\_O\Data\PO031518\  
 Data File : PO043058.D  
 Signal(s) : Signal #1: ECD1A.CH Signal #2: ECD2B.CH  
 Acq On : 15 Mar 2018 12:57  
 Operator : SM/UA  
 Sample : I.BLK  
 Misc :  
 ALS Vial : 2 Sample Multiplier: 1

Instrument :  
 ECD\_O  
 ClientSampleId :  
 I.BLK

Integration File signal 1: autoint1.e  
 Integration File signal 2: autoint2.e  
 Quant Time: Mar 15 13:17:11 2018  
 Quant Method : P:\HPCHEM1\ECD\_O\methods\PO022118.M  
 Quant Title : GC EXTRACTABLES  
 QLast Update : Mon Feb 26 14:24:10 2018  
 Response via : Initial Calibration  
 Integrator: ChemStation 6890 Scale Mode: Small noise peaks clipped

Volume Inj. : 2 µl  
 Signal #1 Phase : ZB-MR1 Signal #2 Phase: ZB-MR2  
 Signal #1 Info : 30Mx0.32mmx 0.50µ Signal #2 Info : 30M x 0.32mm x 0.25µm

Compound	RT#1	RT#2	Resp#1	Resp#2	ng/ml	ng/ml
-----						
System Monitoring Compounds						
1) SA Tetrachlo...	4.086	3.338	5515204	7791433	22.264	21.085
2) SA Decachlor...	9.454	8.113	4334152	5253934	17.149	13.625
Target Compounds						
25) L5 AR-1248-5	6.324	0.000	4808529	0	804.930	N.D. #
26) L6 AR-1254-1	6.324	0.000	4808529	0	341.588	N.D. #
-----						

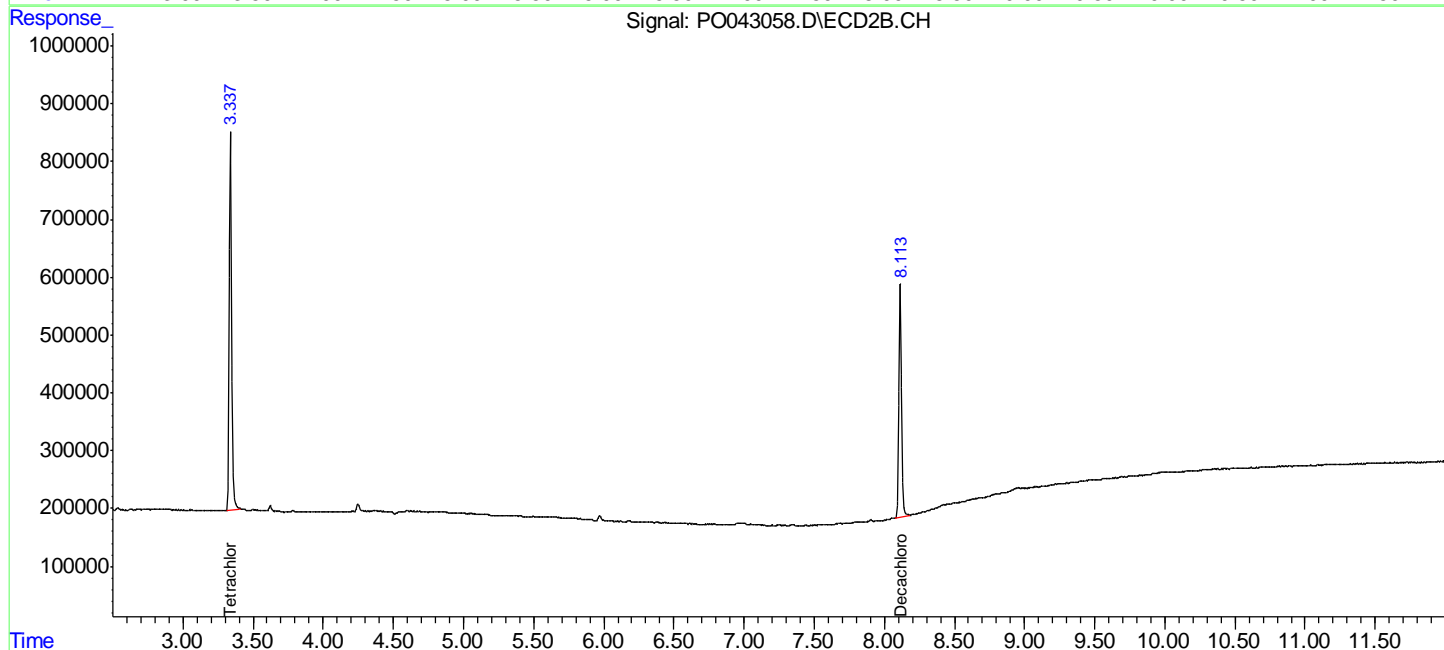
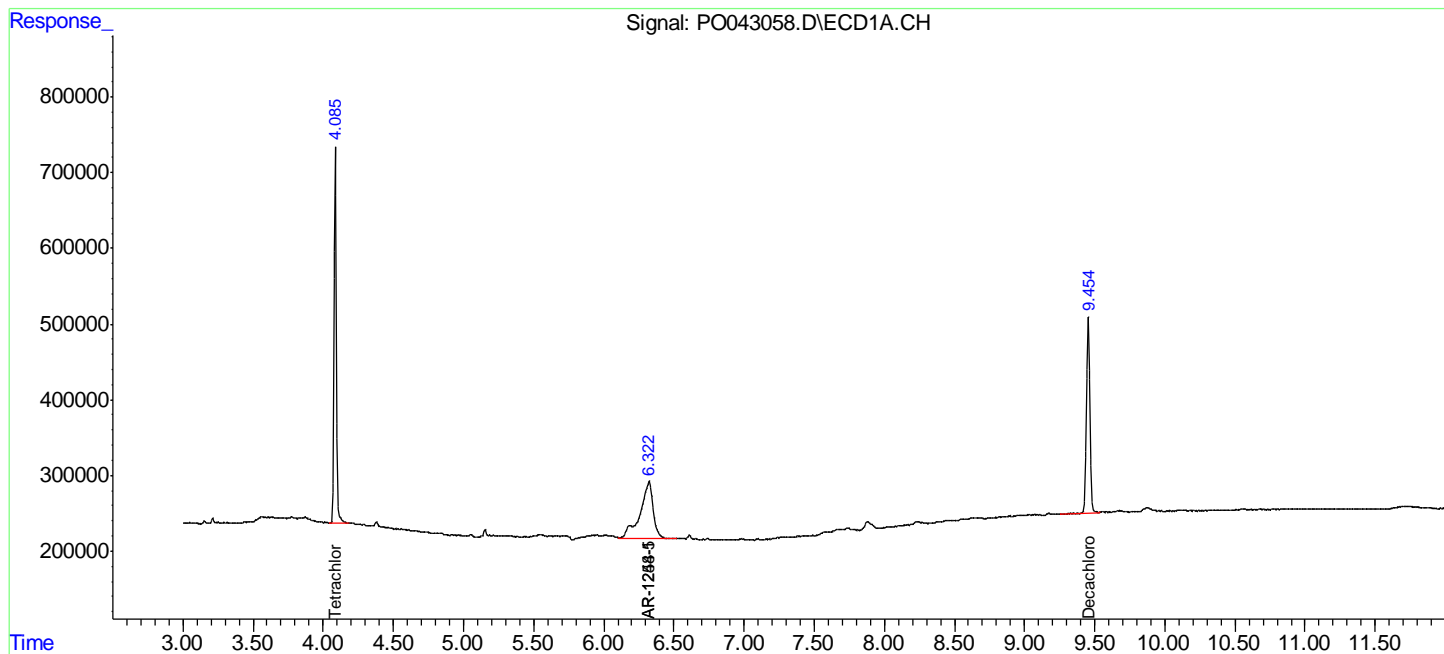
(f)=RT Delta > 1/2 Window (#)=Amounts differ by > 25% (m)=manual int.

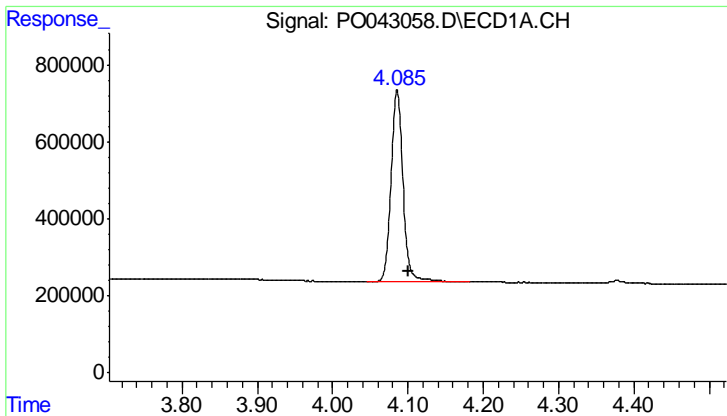
Data Path : P:\HPCHEM1\ECD\_O\Data\PO031518\  
 Data File : PO043058.D  
 Signal(s) : Signal #1: ECD1A.CH Signal #2: ECD2B.CH  
 Acq On : 15 Mar 2018 12:57  
 Operator : SM/UA  
 Sample : I.BLK  
 Misc :  
 ALS Vial : 2 Sample Multiplier: 1

Instrument :  
 ECD\_O  
 ClientSampled :  
 I.BLK

Integration File signal 1: autoint1.e  
 Integration File signal 2: autoint2.e  
 Quant Time: Mar 15 13:17:11 2018  
 Quant Method : P:\HPCHEM1\ECD\_O\methods\PO022118.M  
 Quant Title : GC EXTRACTABLES  
 QLast Update : Mon Feb 26 14:24:10 2018  
 Response via : Initial Calibration  
 Integrator: ChemStation 6890 Scale Mode: Small noise peaks clipped

Volume Inj. : 2 µl  
 Signal #1 Phase : ZB-MR1 Signal #2 Phase: ZB-MR2  
 Signal #1 Info : 30Mx0.32mmx 0.50µ Signal #2 Info : 30M x 0.32mm x 0.25µm

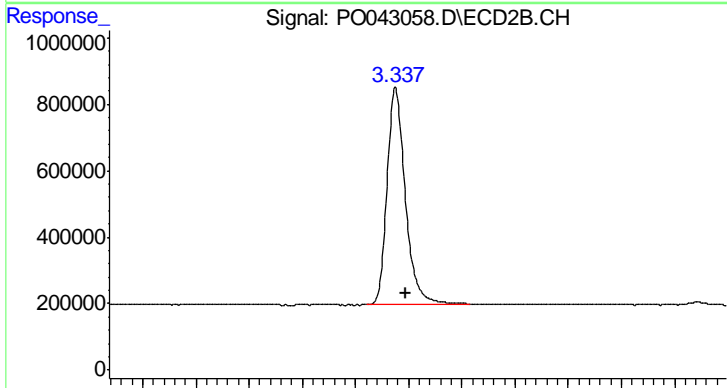




#1 Tetrachloro-m-xylene

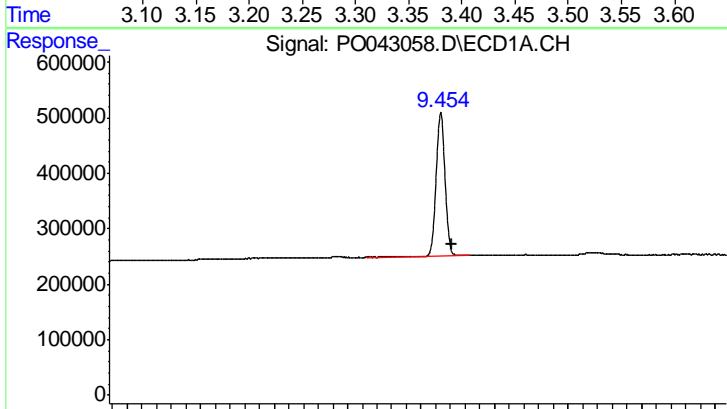
R.T.: 4.086 min  
 Delta R.T.: -0.016 min  
 Response: 5515204  
 Conc: 22.26 ng/ml

Instrument :  
 ECD\_O  
 ClientSampled :  
 I.BLK



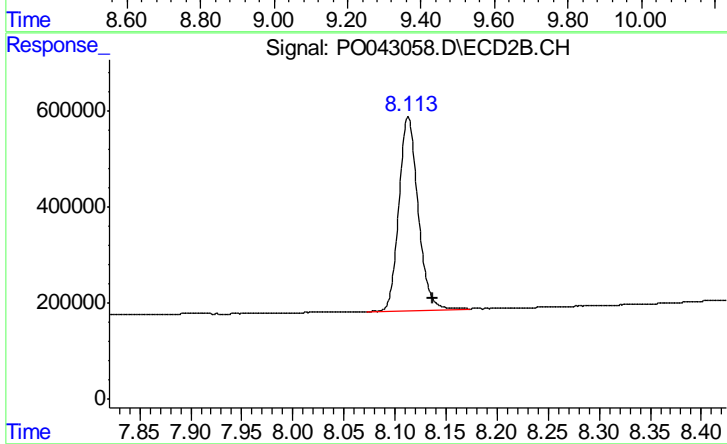
#1 Tetrachloro-m-xylene

R.T.: 3.338 min  
 Delta R.T.: -0.010 min  
 Response: 7791433  
 Conc: 21.08 ng/ml



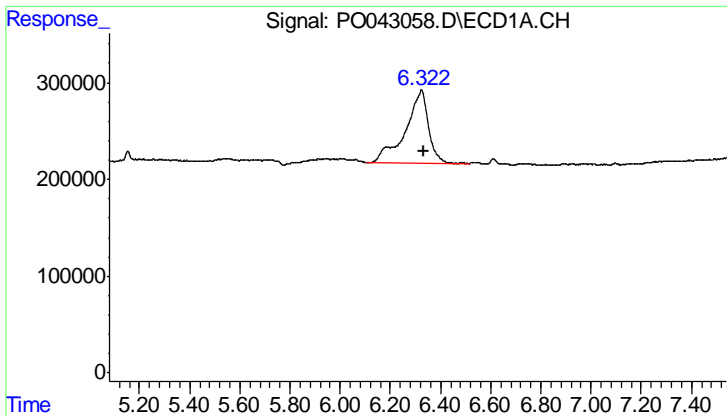
#2 Decachlorobiphenyl

R.T.: 9.454 min  
 Delta R.T.: -0.030 min  
 Response: 4334152  
 Conc: 17.15 ng/ml



#2 Decachlorobiphenyl

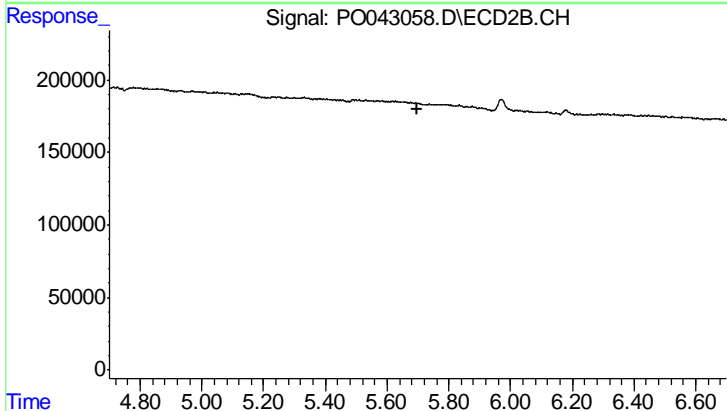
R.T.: 8.113 min  
 Delta R.T.: -0.023 min  
 Response: 5253934  
 Conc: 13.62 ng/ml



#25 AR-1248-5

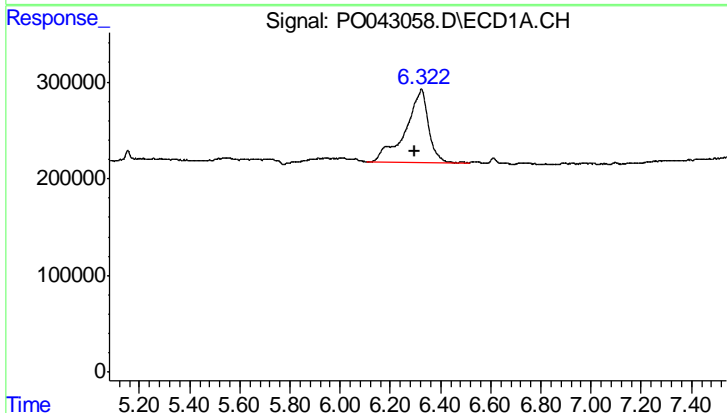
R.T.: 6.324 min  
 Delta R.T.: -0.011 min  
 Response: 4808529  
 Conc: 804.93 ng/ml

Instrument :  
 ECD\_O  
 ClientSampleId :  
 I.BLK



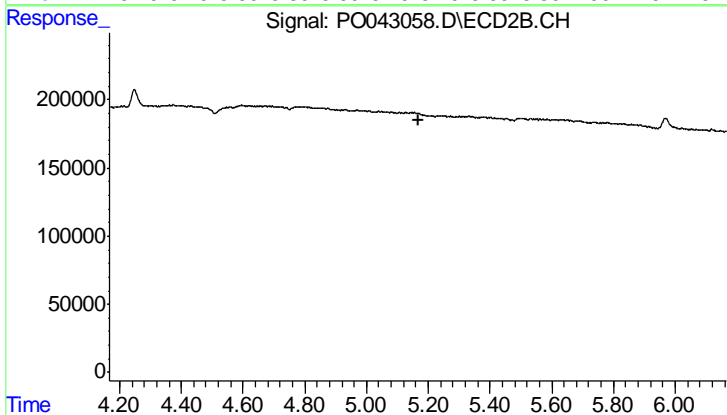
#25 AR-1248-5

R.T.: 0.000 min  
 Exp R.T. : 5.700 min  
 Response: 0  
 Conc: N.D.



#26 AR-1254-1

R.T.: 6.324 min  
 Delta R.T.: 0.029 min  
 Response: 4808529  
 Conc: 341.59 ng/ml



#26 AR-1254-1

R.T.: 0.000 min  
 Exp R.T. : 5.167 min  
 Response: 0  
 Conc: N.D.