

Data Path : P:\HPCHEM1\ECD_O\Data\PO031518\
 Data File : PO043073.D
 Signal(s) : Signal #1: ECD1A.CH Signal #2: ECD2B.CH
 Acq On : 15 Mar 2018 18:29
 Operator : SM/UA
 Sample : J1887-03
 Misc :
 ALS Vial : 11 Sample Multiplier: 1

Instrument :
 ECD_O
 ClientSampleId :
 16662-17600

Integration File signal 1: autoint1.e
 Integration File signal 2: autoint2.e
 Quant Time: Mar 16 02:11:02 2018
 Quant Method : P:\HPCHEM1\ECD_O\methods\PO022118.M
 Quant Title : GC EXTRACTABLES
 QLast Update : Mon Feb 26 14:24:10 2018
 Response via : Initial Calibration
 Integrator: ChemStation 6890 Scale Mode: Small noise peaks clipped

Volume Inj. : 2 µl
 Signal #1 Phase : ZB-MR1 Signal #2 Phase: ZB-MR2
 Signal #1 Info : 30Mx0.32mmx 0.50µ Signal #2 Info : 30M x 0.32mm x 0.25µm

Compound	RT#1	RT#2	Resp#1	Resp#2	ng/ml	ng/ml

System Monitoring Compounds						
1) SA Tetrachlo...	4.080	3.337	275816	328728	1.113m	0.890
2) SA Decachlor...	9.447	8.111	150094	182542	0.594m	0.473m

Target Compounds

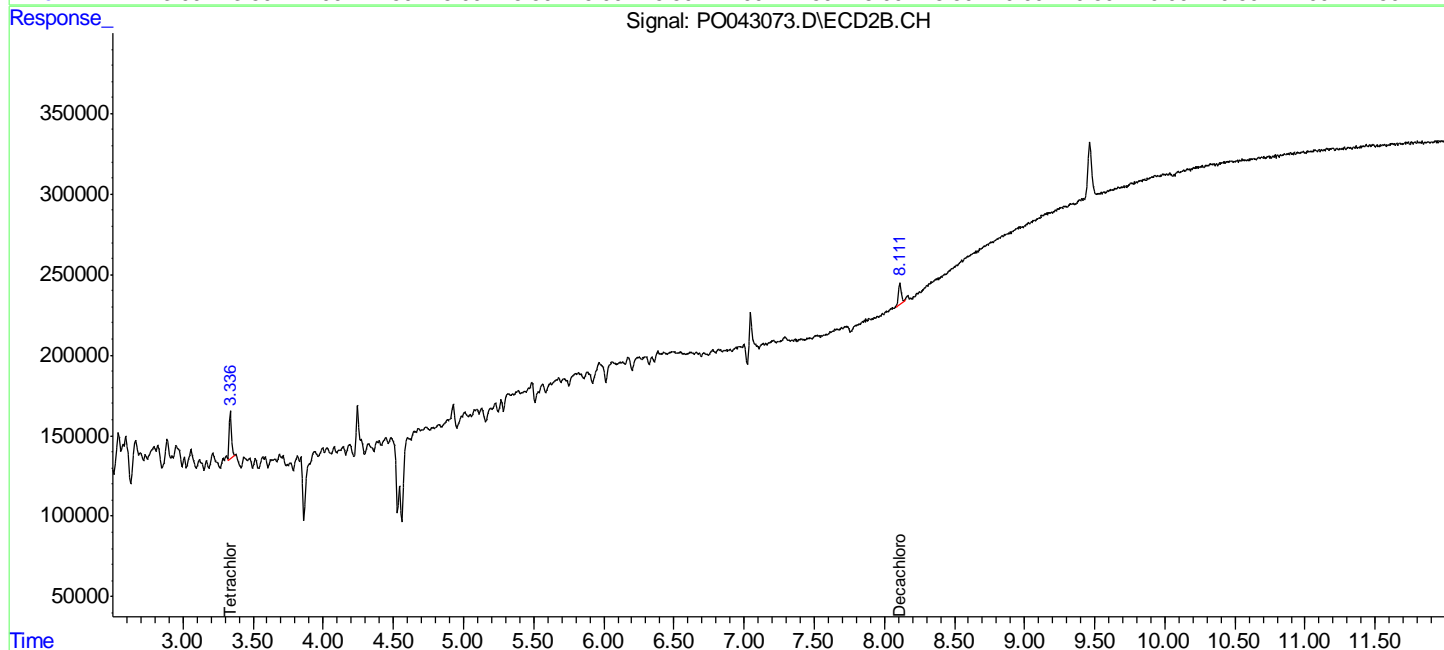
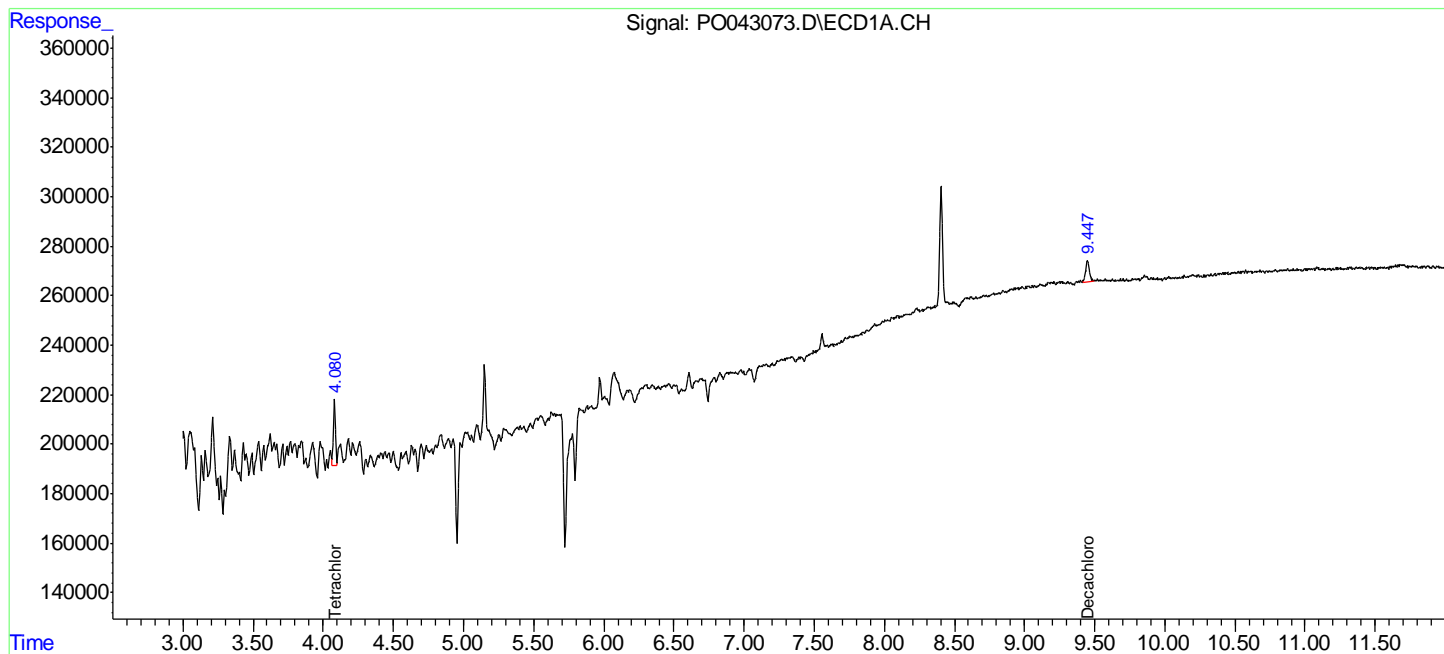
(f)=RT Delta > 1/2 Window (#)=Amounts differ by > 25% (m)=manual int.

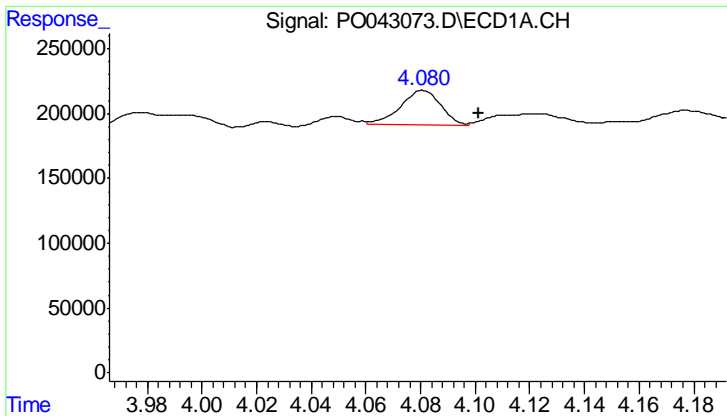
Data Path : P:\HPCHEM1\ECD_O\Data\PO031518\
 Data File : PO043073.D
 Signal(s) : Signal #1: ECD1A.CH Signal #2: ECD2B.CH
 Acq On : 15 Mar 2018 18:29
 Operator : SM/UA
 Sample : J1887-03
 Misc :
 ALS Vial : 11 Sample Multiplier: 1

Instrument :
 ECD_O
 ClientSampled :
 16662-17600

Integration File signal 1: autoint1.e
 Integration File signal 2: autoint2.e
 Quant Time: Mar 16 02:11:02 2018
 Quant Method : P:\HPCHEM1\ECD_O\methods\PO022118.M
 Quant Title : GC EXTRACTABLES
 QLast Update : Mon Feb 26 14:24:10 2018
 Response via : Initial Calibration
 Integrator: ChemStation 6890 Scale Mode: Small noise peaks clipped

Volume Inj. : 2 µl
 Signal #1 Phase : ZB-MR1 Signal #2 Phase: ZB-MR2
 Signal #1 Info : 30Mx0.32mmx 0.50µ Signal #2 Info : 30M x 0.32mm x 0.25µm

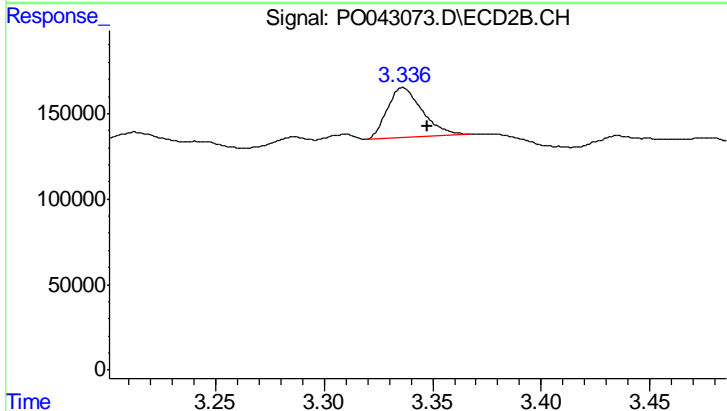




#1 Tetrachloro-m-xylene

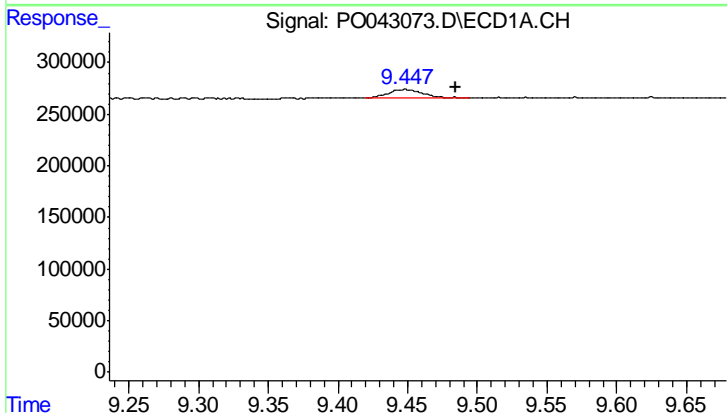
R.T.: 4.080 min
 Delta R.T.: -0.021 min
 Response: 275816
 Conc: 1.11 ng/ml

Instrument :
 ECD_O
 ClientSampleId :
 16662-17600



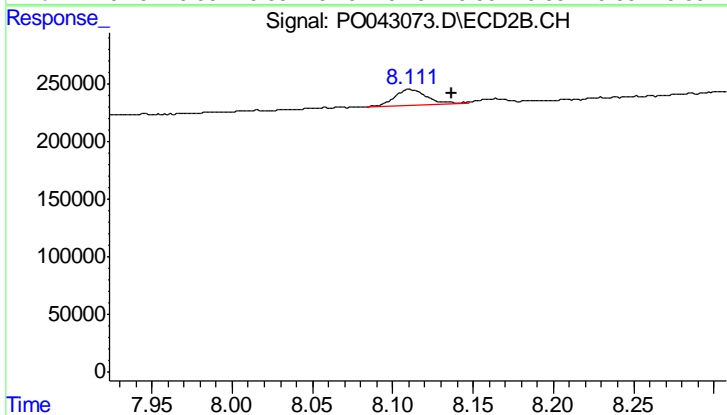
#1 Tetrachloro-m-xylene

R.T.: 3.337 min
 Delta R.T.: -0.011 min
 Response: 328728
 Conc: 0.89 ng/ml



#2 Decachlorobiphenyl

R.T.: 9.447 min
 Delta R.T.: -0.037 min
 Response: 150094
 Conc: 0.59 ng/ml m



#2 Decachlorobiphenyl

R.T.: 8.111 min
 Delta R.T.: -0.026 min
 Response: 182542
 Conc: 0.47 ng/ml m