

Data Path : Z:\pestpcbsrv\HPCHEM1\ECD_0\Data\P0031519\
 Data File : P0054452.D
 Signal(s) : Signal #1: ECD1A.CH Signal #2: ECD2B.CH
 Acq On : 16 Mar 2019 1:03
 Operator : SM/SJ
 Sample : K1900-15
 Misc :
 ALS Vial : 32 Sample Multiplier: 1

Instrument :
 ECD_0
 ClientSampleId :

Integration File signal 1: autoint1.e
 Integration File signal 2: autoint2.e
 Quant Time: Mar 16 03:40:38 2019
 Quant Method : Z:\pestpcbsrv\HPCHEM1\ECD_0\methods\P0031419.M
 Quant Title : GC EXTRACTABLES
 QLast Update : Fri Mar 15 05:00:00 2019
 Response via : Initial Calibration
 Integrator: ChemStation 6890 Scale Mode: Small noise peaks clipped

Volume Inj. : 2 µl
 Signal #1 Phase : ZB-MR1 Signal #2 Phase: ZB-MR2
 Signal #1 Info : 30Mx0.32mmx 0.50µ Signal #2 Info : 30M x 0.32mm x 0.25µm

Compound	RT#1	RT#2	Resp#1	Resp#2	ng/ml	ng/ml
System Monitoring Compounds						
1) SA Tetrachlo...	4.012	3.104	106.3E6	4921527	21.577	19.369
2) SA Decachlor...	9.318	7.663	26815035	5767290	19.465	19.501
Target Compounds						
3) L1 AR-1016-1	5.169	4.081	22967970	714013	195.963	61.629 #
4) L1 AR-1016-2	5.169	4.081	22967970	714013	129.525	38.457 #
5) L1 AR-1016-3	5.169	4.236	22967970	7887914	233.796	806.504 #
6) L1 AR-1016-4	5.311	4.278	75927342	15077525	943.723	1965.229 #
7) L1 AR-1016-5	5.600	4.466	208.2E6	22583296	3004.646	2221.386 #
12) L3 AR-1232-2	4.884	4.081	17070405	714013	451.714	84.244 #
13) L3 AR-1232-3	5.169	4.236	22967970	7887914	308.836	1761.288 #
14) L3 AR-1232-4	5.311	4.312	75927342	13440920	2240.628	3594.528 #
15) L3 AR-1232-5	5.401	4.466	153.7E6	22583296	7439.874	5191.182 #
16) L4 AR-1242-1	5.169	4.081	22967970	714013	243.856	75.102 #
17) L4 AR-1242-2	5.169	4.081	22967970	714013	165.073	46.012 #
18) L4 AR-1242-3	5.169	4.236	22967970	7887914	296.253	963.720 #
19) L4 AR-1242-4	5.311	4.312	75927342	13440920	1175.685	1767.889 #
20) L4 AR-1242-5	6.030	4.785	79880539	3718682	1348.210	354.540 #
21) L5 AR-1248-1	5.169	4.081	22967970	714013	235.349	68.257 #
22) L5 AR-1248-2	5.401	4.278	153.7E6	15077525	1309.032	1052.832
23) L5 AR-1248-3	5.600	4.312	208.2E6	13440920	1595.774	933.652 #
24) L5 AR-1248-4	5.993	4.466	11284380	22583296	80.626	1214.453 #
25) L5 AR-1248-5	6.030	4.824	79880539	10754518	582.468	557.699
26) L6 AR-1254-1	5.962	4.785	30977161	3718682	334.928	178.385 #
27) L6 AR-1254-2	6.186	4.922	58707848	1827893	421.500	100.435 #
28) L6 AR-1254-3	6.536	5.290	13335776	2736908	96.025	98.567
29) L6 AR-1254-4	0.000	5.510	0	653799	N.D.	35.332 #
30) L6 AR-1254-5	0.000	5.864	0	66626	N.D.	3.317 #
31) L7 AR-1260-1	6.672	5.416	11818287	1382758	130.973	75.468 #
32) L7 AR-1260-2	0.000	5.591	0	244792	N.D.	10.990 #
33) L7 AR-1260-3	0.000	5.769	0	147637	N.D.	7.201 #
36) L8 AR-1262-1	0.000	5.944	0	147424	N.D.	5.574 #

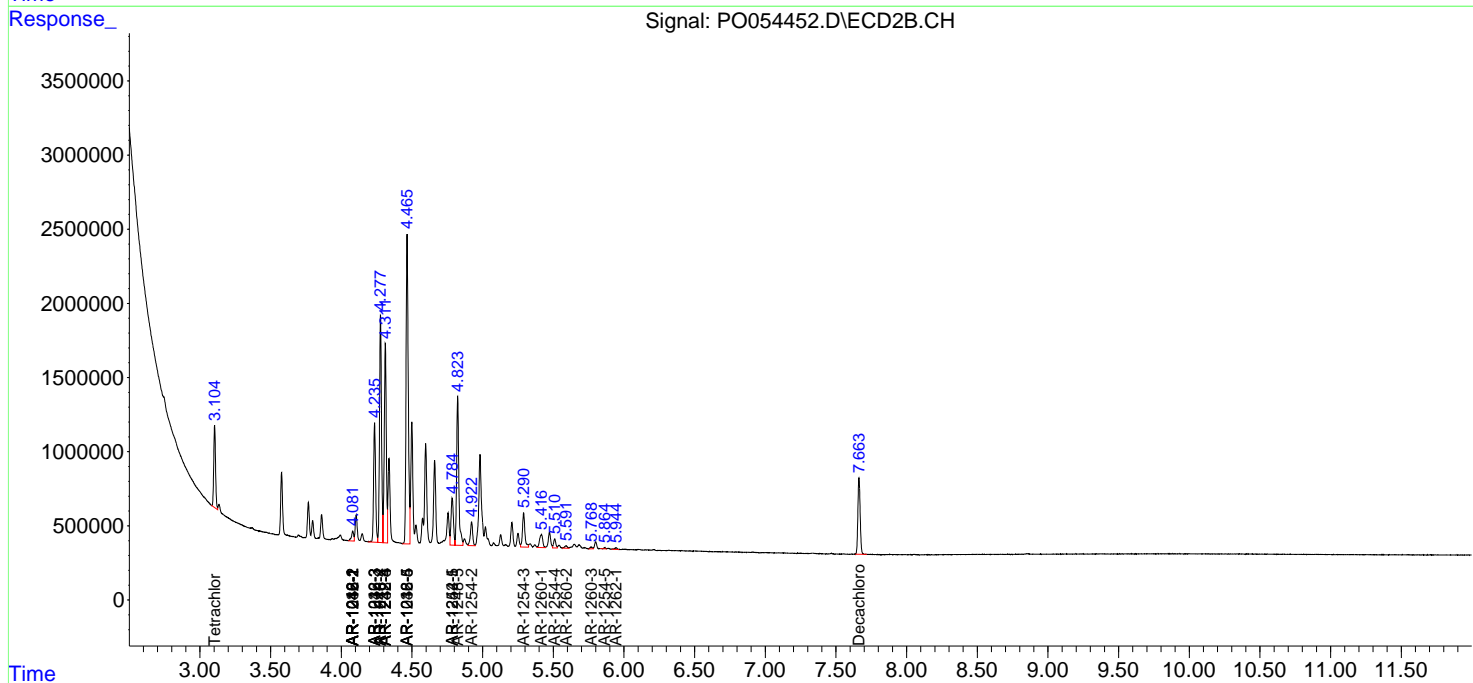
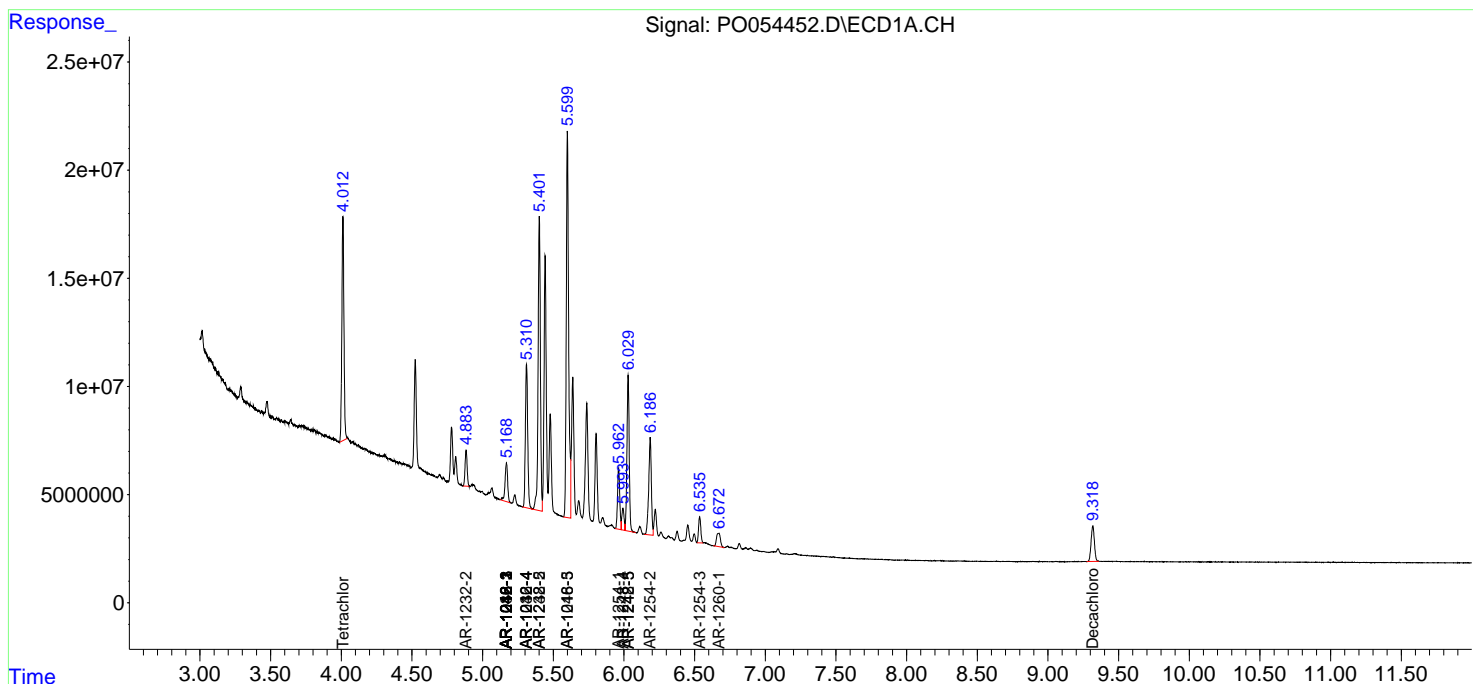
(f)=RT Delta > 1/2 Window (#)=Amounts differ by > 25% (m)=manual int.

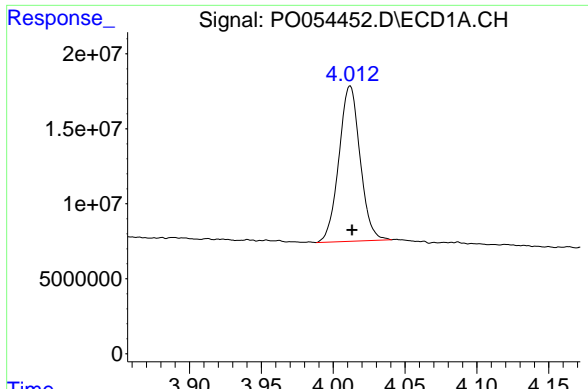
Data Path : Z:\pestpcbsrv\HPCHEM1\ECD_O\Data\P0031519\
 Data File : P0054452.D
 Signal(s) : Signal #1: ECD1A.CH Signal #2: ECD2B.CH
 Acq On : 16 Mar 2019 1:03
 Operator : SM/SJ
 Sample : K1900-15
 Misc :
 ALS Vial : 32 Sample Multiplier: 1

Instrument :
 ECD_O
 ClientSampled :

Integration File signal 1: autoint1.e
 Integration File signal 2: autoint2.e
 Quant Time: Mar 16 03:40:38 2019
 Quant Method : Z:\pestpcbsrv\HPCHEM1\ECD_O\methods\P0031419.M
 Quant Title : GC EXTRACTABLES
 QLast Update : Fri Mar 15 05:00:00 2019
 Response via : Initial Calibration
 Integrator: ChemStation 6890 Scale Mode: Small noise peaks clipped

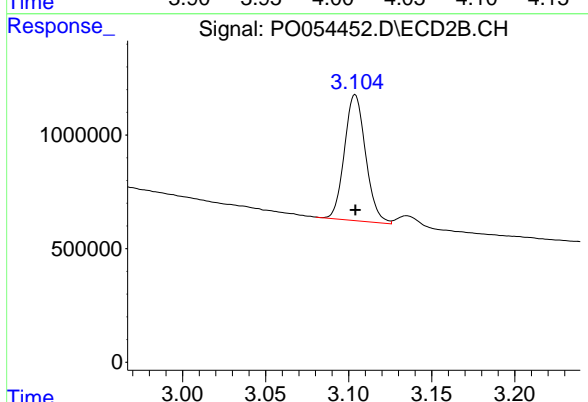
Volume Inj. : 2 µl
 Signal #1 Phase : ZB-MR1 Signal #2 Phase: ZB-MR2
 Signal #1 Info : 30Mx0.32mmx 0.50µ Signal #2 Info : 30M x 0.32mm x 0.25µm



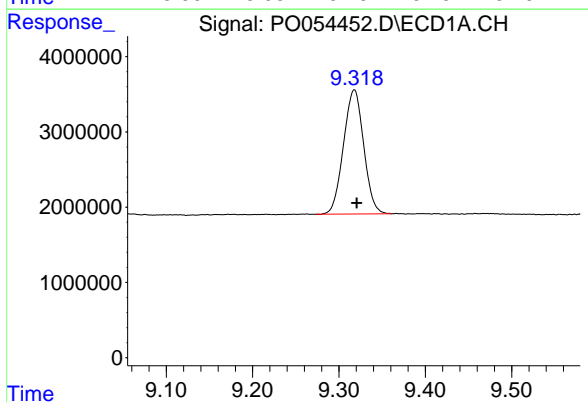


#1 Tetrachloro-m-xylene
 R.T.: 4.012 min
 Delta R.T.: -0.001 min
 Response: 106262086
 Conc: 21.58 ng/ml

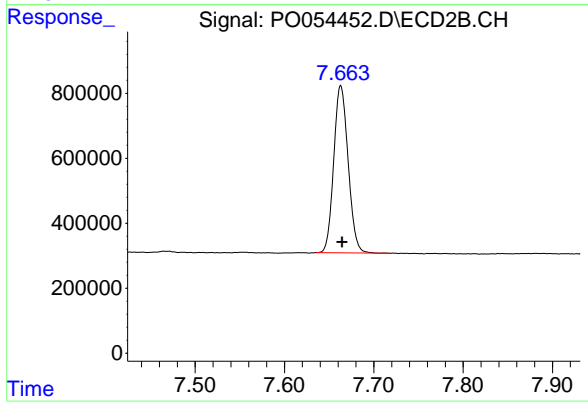
Instrument :
 ECD_O
 ClientSampleId :



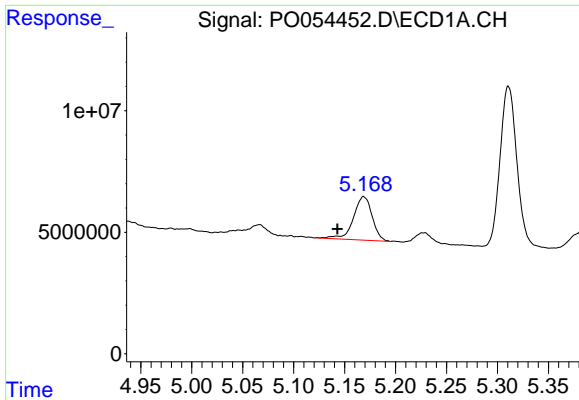
#1 Tetrachloro-m-xylene
 R.T.: 3.104 min
 Delta R.T.: 0.000 min
 Response: 4921527
 Conc: 19.37 ng/ml



#2 Decachlorobiphenyl
 R.T.: 9.318 min
 Delta R.T.: -0.003 min
 Response: 26815035
 Conc: 19.47 ng/ml



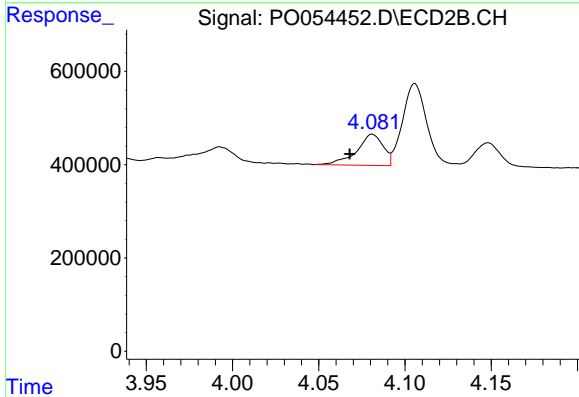
#2 Decachlorobiphenyl
 R.T.: 7.663 min
 Delta R.T.: -0.002 min
 Response: 5767290
 Conc: 19.50 ng/ml



#3 AR-1016-1

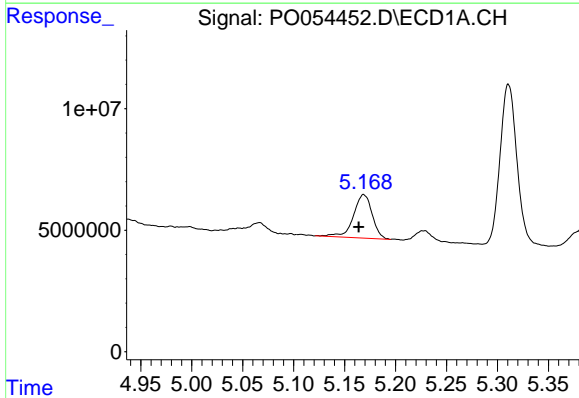
R.T.: 5.169 min
 Delta R.T.: 0.025 min
 Response: 22967970
 Conc: 195.96 ng/ml

Instrument :
 ECD_O
 ClientSampleId :



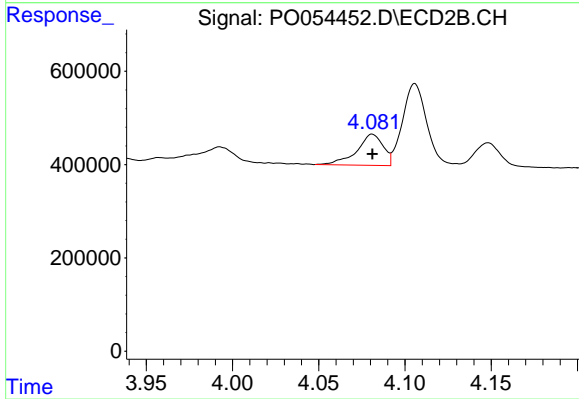
#3 AR-1016-1

R.T.: 4.081 min
 Delta R.T.: 0.013 min
 Response: 714013
 Conc: 61.63 ng/ml



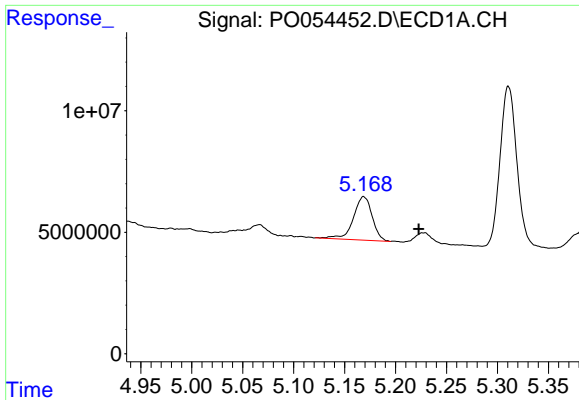
#4 AR-1016-2

R.T.: 5.169 min
 Delta R.T.: 0.005 min
 Response: 22967970
 Conc: 129.52 ng/ml



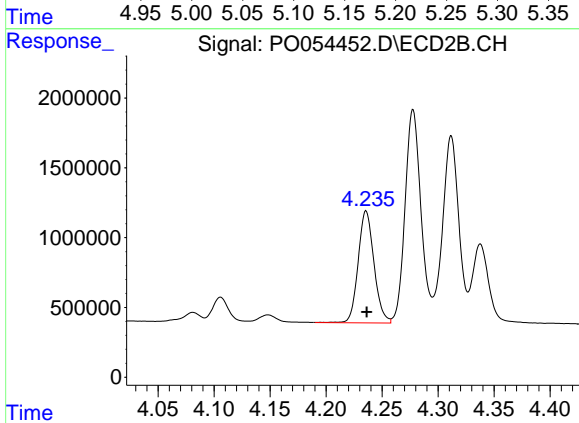
#4 AR-1016-2

R.T.: 4.081 min
 Delta R.T.: 0.000 min
 Response: 714013
 Conc: 38.46 ng/ml

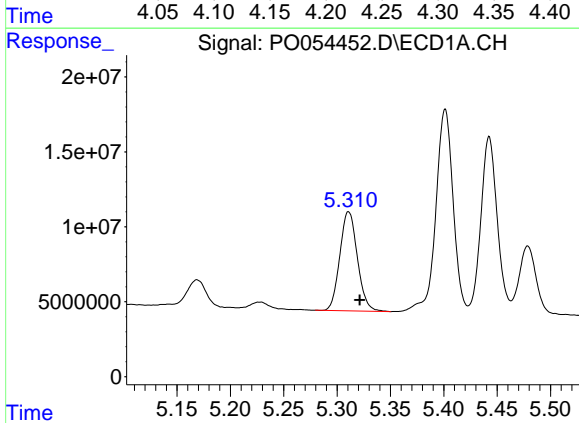


#5 AR-1016-3
 R.T.: 5.169 min
 Delta R.T.: -0.054 min
 Response: 22967970
 Conc: 233.80 ng/ml

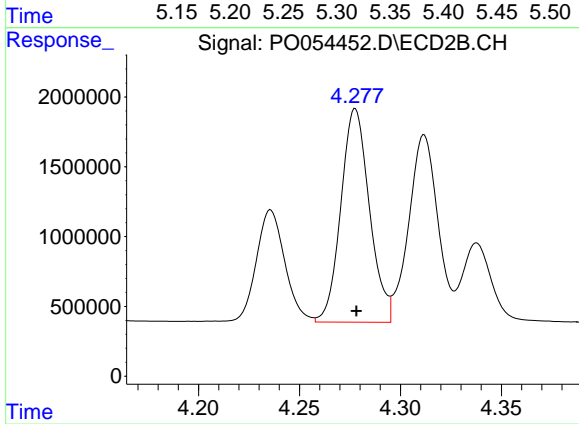
Instrument :
 ECD_O
 ClientSampled :



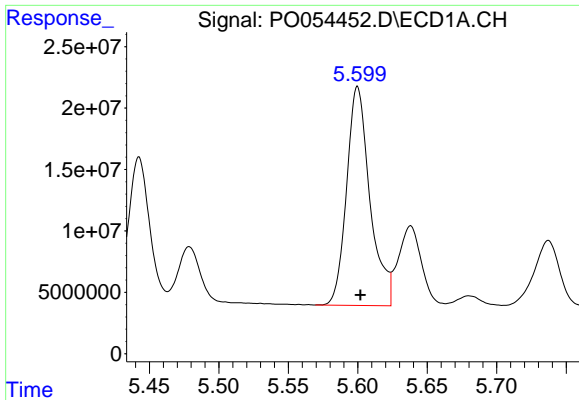
#5 AR-1016-3
 R.T.: 4.236 min
 Delta R.T.: 0.000 min
 Response: 7887914
 Conc: 806.50 ng/ml



#6 AR-1016-4
 R.T.: 5.311 min
 Delta R.T.: -0.011 min
 Response: 75927342
 Conc: 943.72 ng/ml



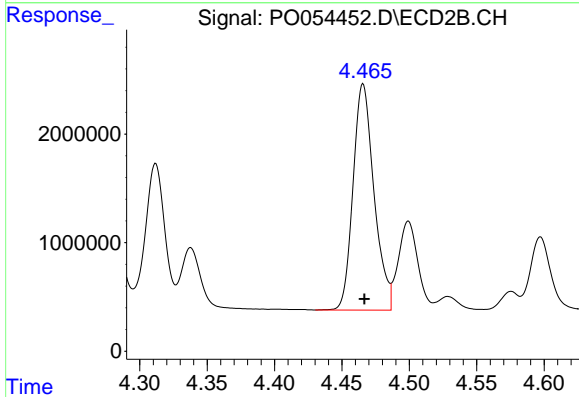
#6 AR-1016-4
 R.T.: 4.278 min
 Delta R.T.: 0.000 min
 Response: 15077525
 Conc: 1965.23 ng/ml



#7 AR-1016-5

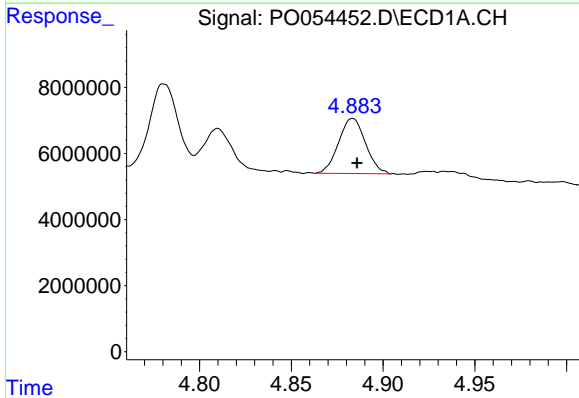
R.T.: 5.600 min
 Delta R.T.: -0.002 min
 Response: 208236483
 Conc: 3004.65 ng/ml

Instrument :
 ECD_O
 ClientSampled :



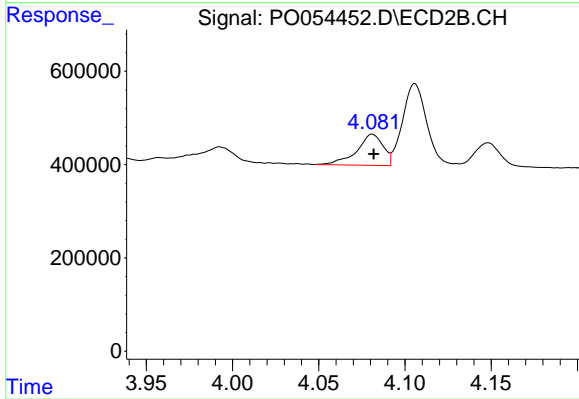
#7 AR-1016-5

R.T.: 4.466 min
 Delta R.T.: 0.000 min
 Response: 22583296
 Conc: 2221.39 ng/ml



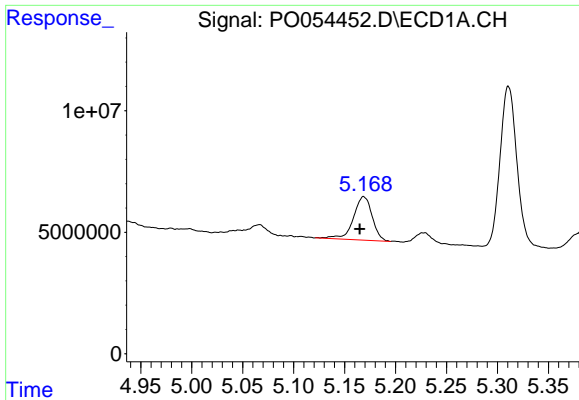
#12 AR-1232-2

R.T.: 4.884 min
 Delta R.T.: -0.002 min
 Response: 17070405
 Conc: 451.71 ng/ml



#12 AR-1232-2

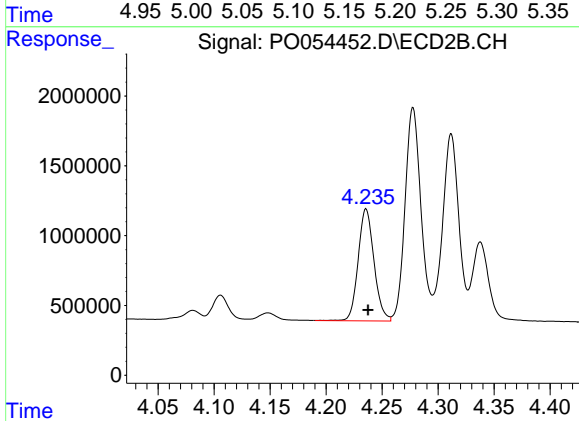
R.T.: 4.081 min
 Delta R.T.: 0.000 min
 Response: 714013
 Conc: 84.24 ng/ml



#13 AR-1232-3

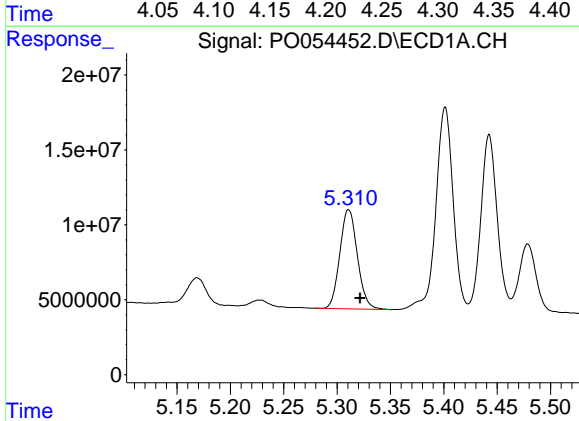
R.T.: 5.169 min
 Delta R.T.: 0.004 min
 Response: 22967970
 Conc: 308.84 ng/ml

Instrument :
 ECD_O
 ClientSampled :



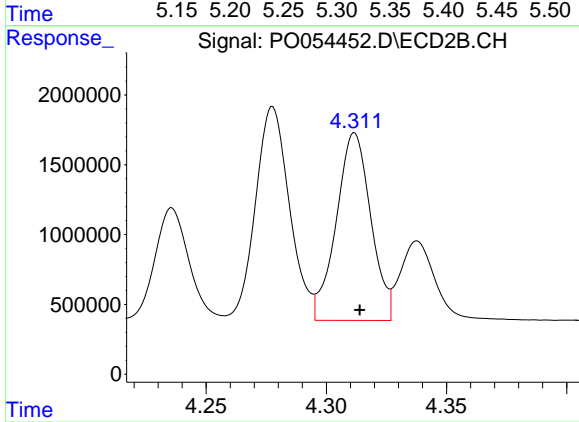
#13 AR-1232-3

R.T.: 4.236 min
 Delta R.T.: -0.002 min
 Response: 7887914
 Conc: 1761.29 ng/ml



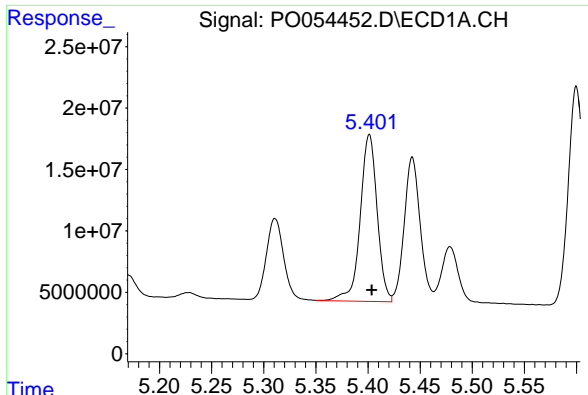
#14 AR-1232-4

R.T.: 5.311 min
 Delta R.T.: -0.011 min
 Response: 75927342
 Conc: 2240.63 ng/ml



#14 AR-1232-4

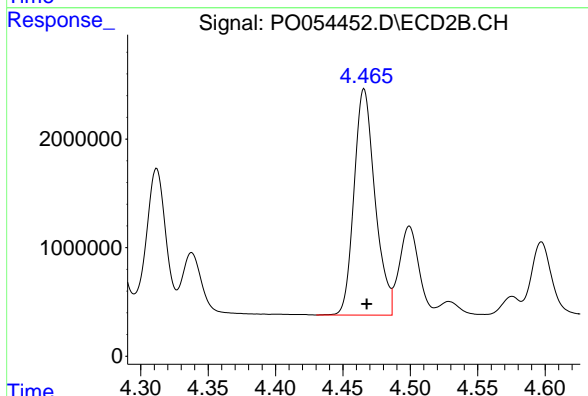
R.T.: 4.312 min
 Delta R.T.: -0.002 min
 Response: 13440920
 Conc: 3594.53 ng/ml



#15 AR-1232-5

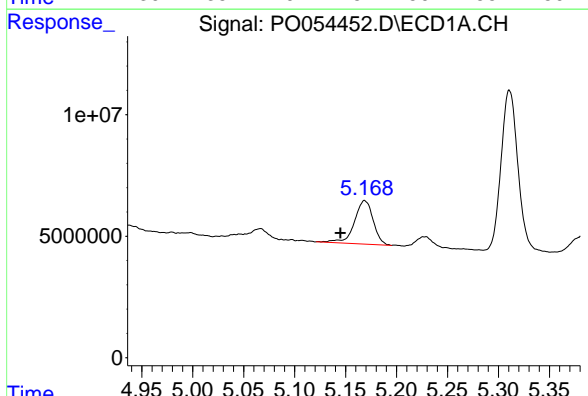
R.T.: 5.401 min
 Delta R.T.: -0.002 min
 Response: 153666914
 Conc: 7439.87 ng/ml

Instrument :
 ECD_O
 ClientSampleId :



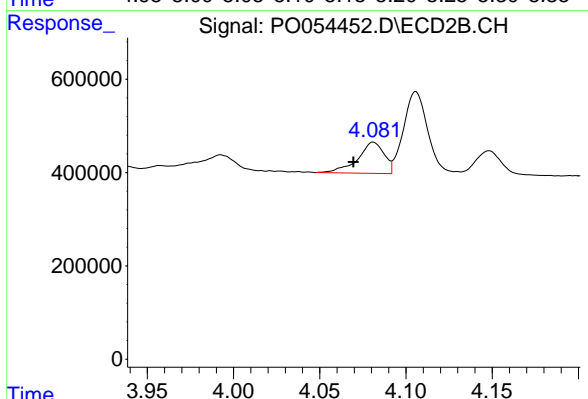
#15 AR-1232-5

R.T.: 4.466 min
 Delta R.T.: -0.002 min
 Response: 22583296
 Conc: 5191.18 ng/ml



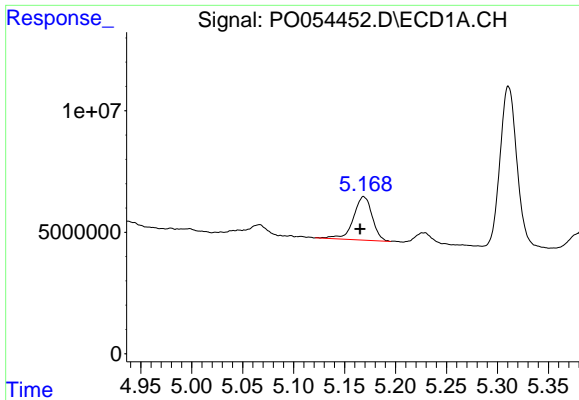
#16 AR-1242-1

R.T.: 5.169 min
 Delta R.T.: 0.024 min
 Response: 22967970
 Conc: 243.86 ng/ml



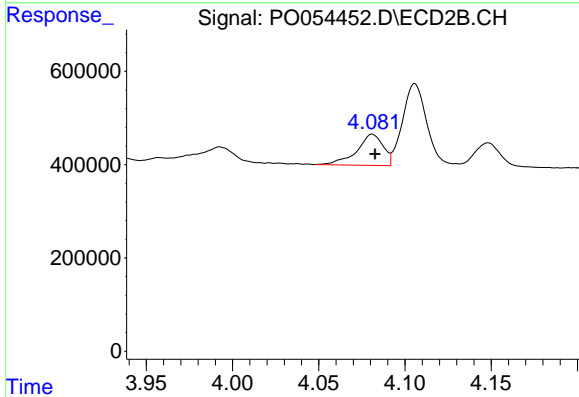
#16 AR-1242-1

R.T.: 4.081 min
 Delta R.T.: 0.012 min
 Response: 714013
 Conc: 75.10 ng/ml

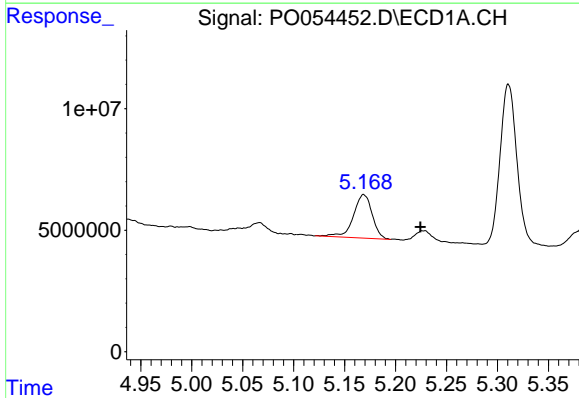


#17 AR-1242-2
 R.T.: 5.169 min
 Delta R.T.: 0.003 min
 Response: 22967970
 Conc: 165.07 ng/ml

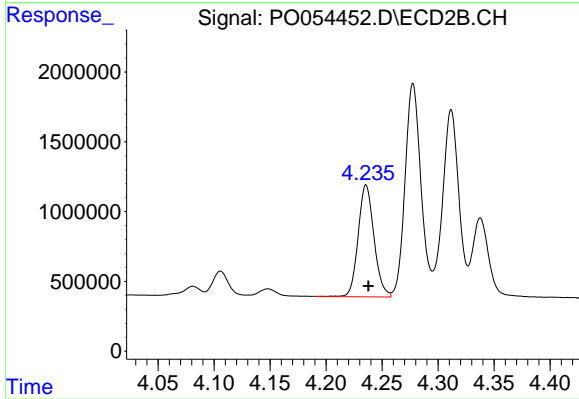
Instrument :
 ECD_O
 ClientSampleId :



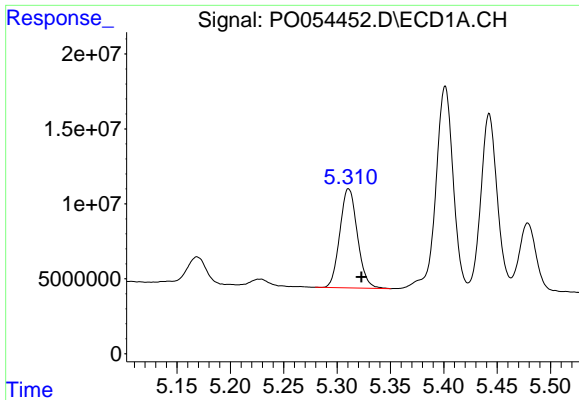
#17 AR-1242-2
 R.T.: 4.081 min
 Delta R.T.: -0.002 min
 Response: 714013
 Conc: 46.01 ng/ml



#18 AR-1242-3
 R.T.: 5.169 min
 Delta R.T.: -0.056 min
 Response: 22967970
 Conc: 296.25 ng/ml

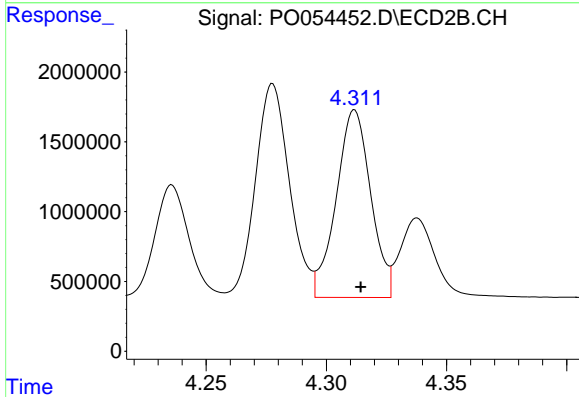


#18 AR-1242-3
 R.T.: 4.236 min
 Delta R.T.: -0.002 min
 Response: 7887914
 Conc: 963.72 ng/ml

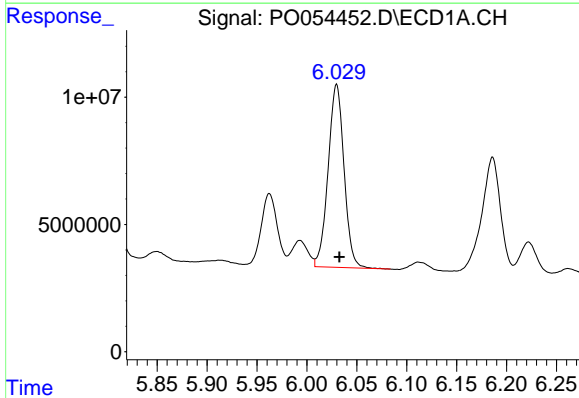


#19 AR-1242-4
 R.T.: 5.311 min
 Delta R.T.: -0.012 min
 Response: 75927342
 Conc: 1175.69 ng/ml

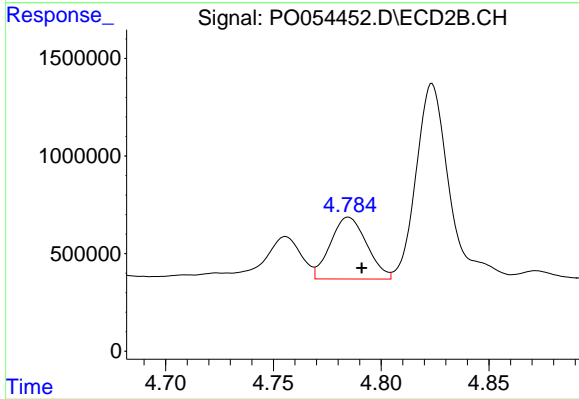
Instrument :
 ECD_O
 ClientSampled :



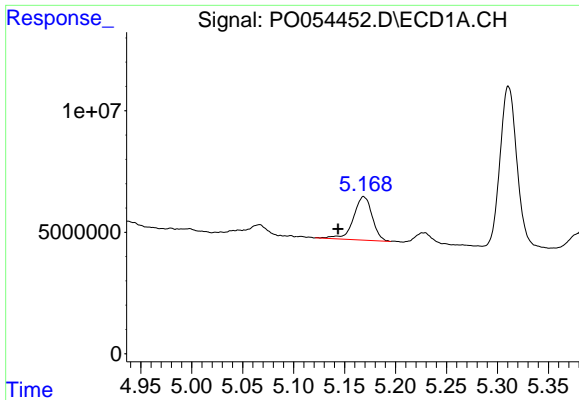
#19 AR-1242-4
 R.T.: 4.312 min
 Delta R.T.: -0.003 min
 Response: 13440920
 Conc: 1767.89 ng/ml



#20 AR-1242-5
 R.T.: 6.030 min
 Delta R.T.: -0.003 min
 Response: 79880539
 Conc: 1348.21 ng/ml

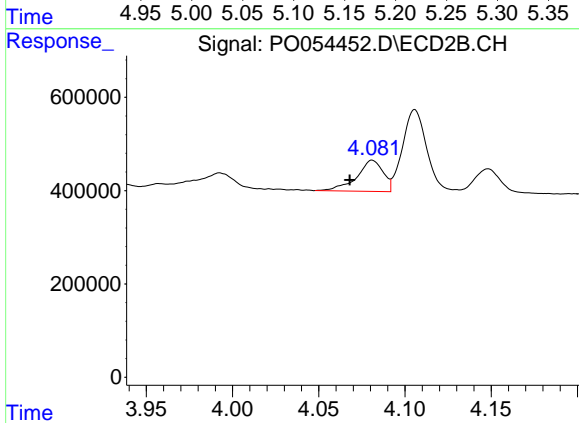


#20 AR-1242-5
 R.T.: 4.785 min
 Delta R.T.: -0.006 min
 Response: 3718682
 Conc: 354.54 ng/ml

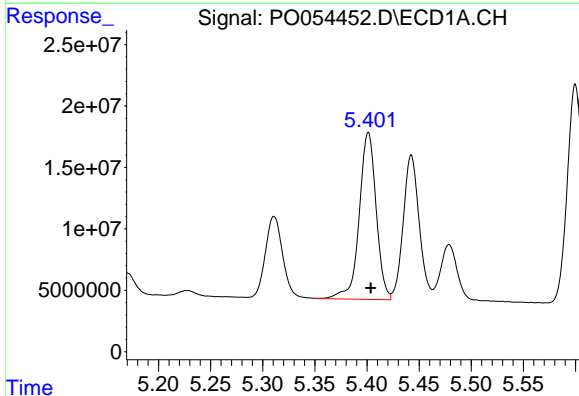


#21 AR-1248-1
 R.T.: 5.169 min
 Delta R.T.: 0.025 min
 Response: 22967970
 Conc: 235.35 ng/ml

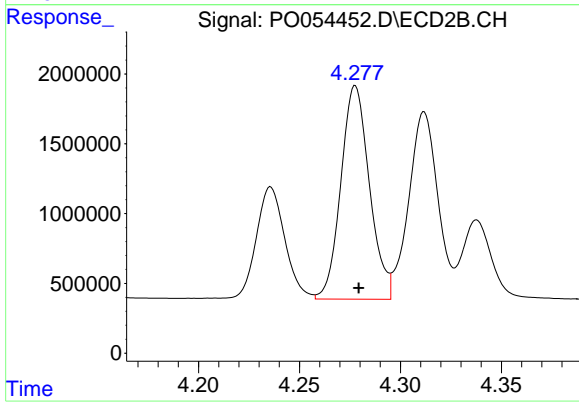
Instrument :
 ECD_O
 ClientSampleId :



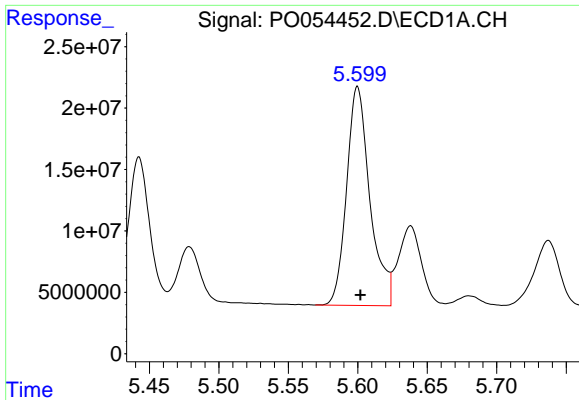
#21 AR-1248-1
 R.T.: 4.081 min
 Delta R.T.: 0.013 min
 Response: 714013
 Conc: 68.26 ng/ml



#22 AR-1248-2
 R.T.: 5.401 min
 Delta R.T.: -0.002 min
 Response: 153666914
 Conc: 1309.03 ng/ml



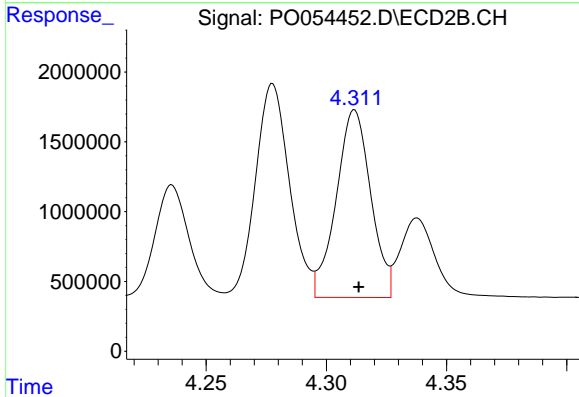
#22 AR-1248-2
 R.T.: 4.278 min
 Delta R.T.: -0.002 min
 Response: 15077525
 Conc: 1052.83 ng/ml



#23 AR-1248-3

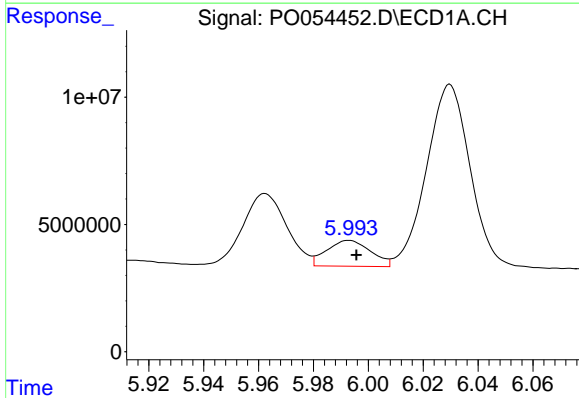
R.T.: 5.600 min
 Delta R.T.: -0.002 min
 Response: 208236483
 Conc: 1595.77 ng/ml

Instrument :
 ECD_O
 ClientSampled :



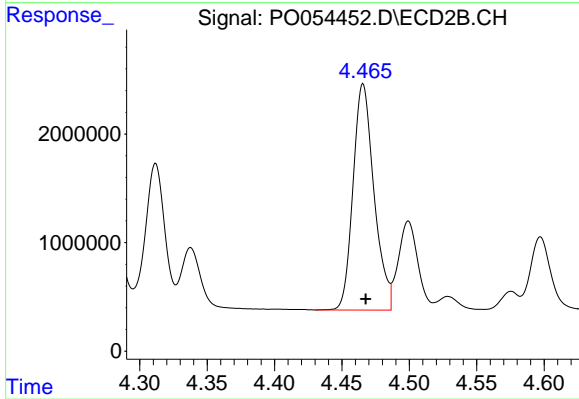
#23 AR-1248-3

R.T.: 4.312 min
 Delta R.T.: -0.002 min
 Response: 13440920
 Conc: 933.65 ng/ml



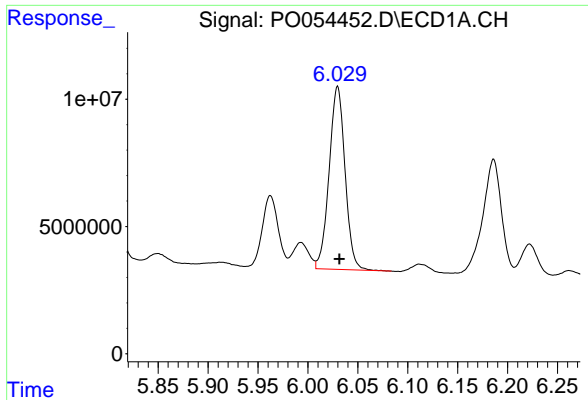
#24 AR-1248-4

R.T.: 5.993 min
 Delta R.T.: -0.002 min
 Response: 11284380
 Conc: 80.63 ng/ml



#24 AR-1248-4

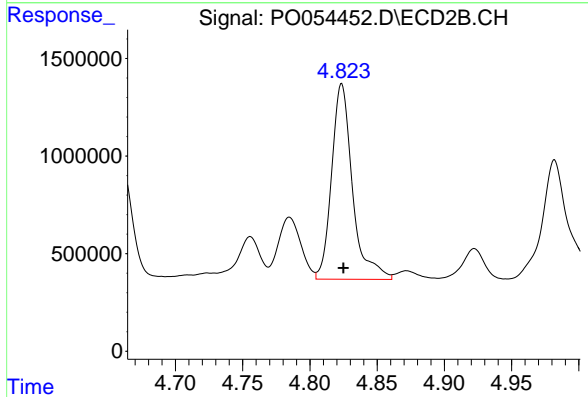
R.T.: 4.466 min
 Delta R.T.: -0.002 min
 Response: 22583296
 Conc: 1214.45 ng/ml



#25 AR-1248-5

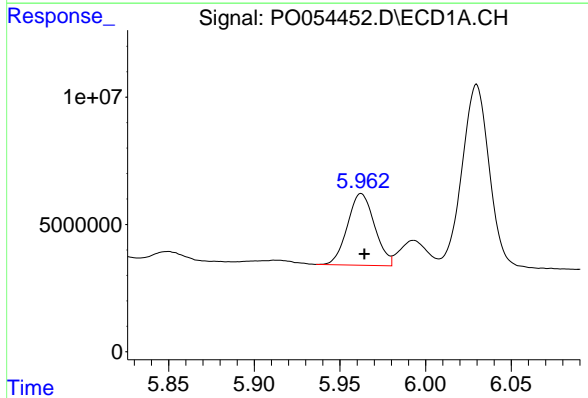
R.T.: 6.030 min
Delta R.T.: -0.002 min
Response: 79880539
Conc: 582.47 ng/ml

Instrument :
ECD_O
ClientSampled :



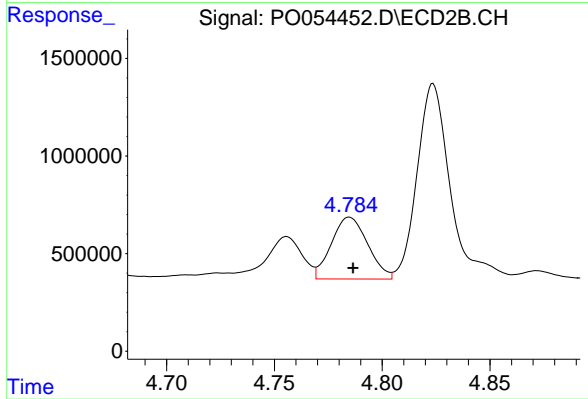
#25 AR-1248-5

R.T.: 4.824 min
Delta R.T.: -0.001 min
Response: 10754518
Conc: 557.70 ng/ml



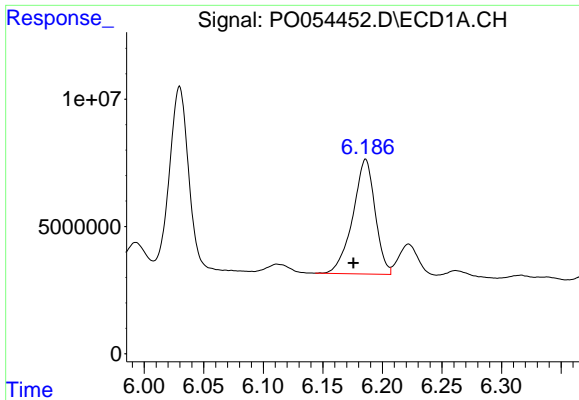
#26 AR-1254-1

R.T.: 5.962 min
Delta R.T.: -0.002 min
Response: 30977161
Conc: 334.93 ng/ml



#26 AR-1254-1

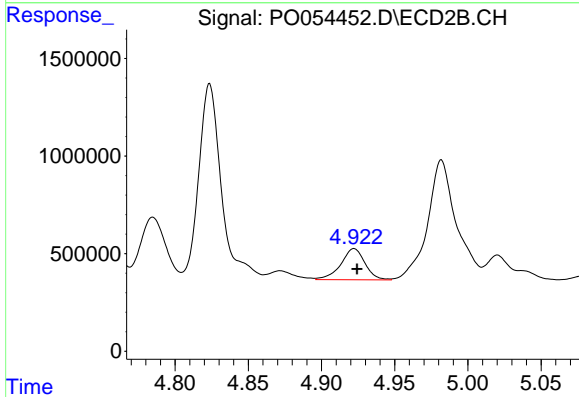
R.T.: 4.785 min
Delta R.T.: -0.002 min
Response: 3718682
Conc: 178.38 ng/ml



#27 AR-1254-2

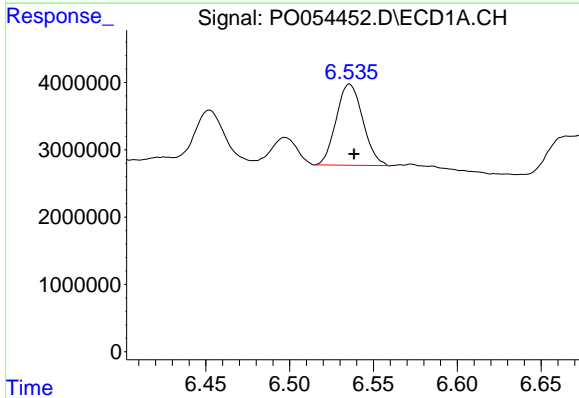
R.T.: 6.186 min
 Delta R.T.: 0.010 min
 Response: 58707848
 Conc: 421.50 ng/ml

Instrument :
 ECD_O
 ClientSampled :



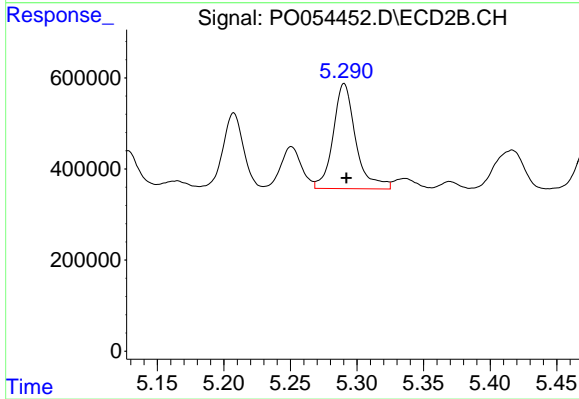
#27 AR-1254-2

R.T.: 4.922 min
 Delta R.T.: -0.002 min
 Response: 1827893
 Conc: 100.44 ng/ml



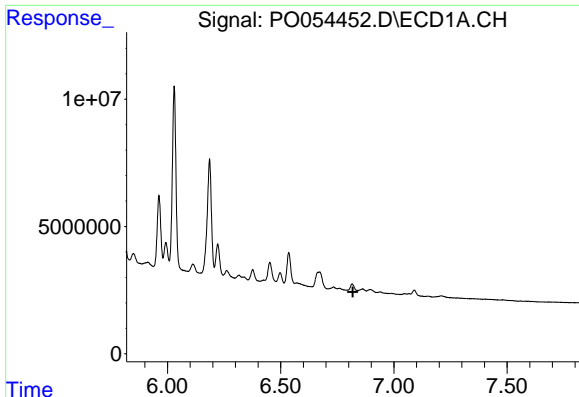
#28 AR-1254-3

R.T.: 6.536 min
 Delta R.T.: -0.003 min
 Response: 13335776
 Conc: 96.02 ng/ml



#28 AR-1254-3

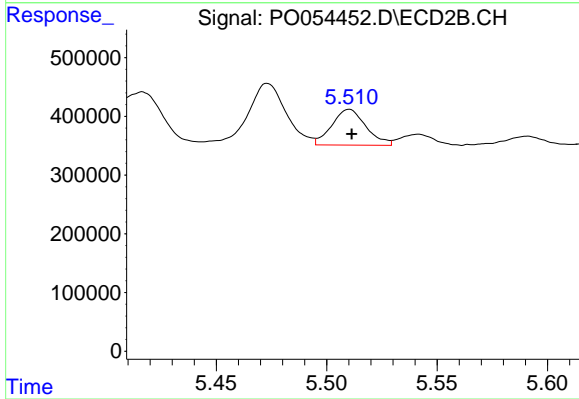
R.T.: 5.290 min
 Delta R.T.: -0.002 min
 Response: 2736908
 Conc: 98.57 ng/ml



#29 AR-1254-4

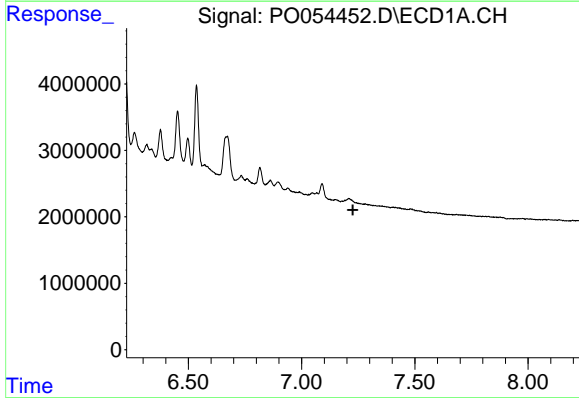
R.T.: 0.000 min
 Exp R.T. : 6.819 min
 Response: 0
 Conc: N.D.

Instrument :
 ECD_O
 ClientSampleId :



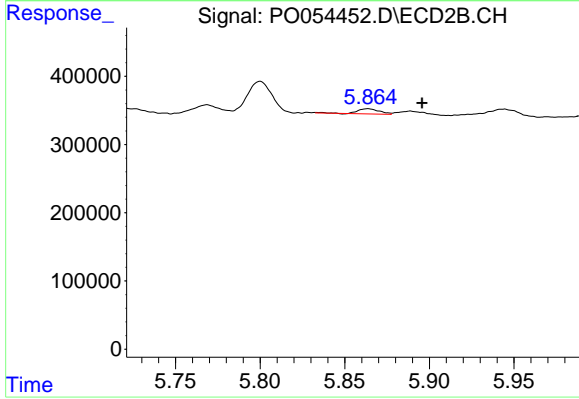
#29 AR-1254-4

R.T.: 5.510 min
 Delta R.T.: -0.001 min
 Response: 653799
 Conc: 35.33 ng/ml



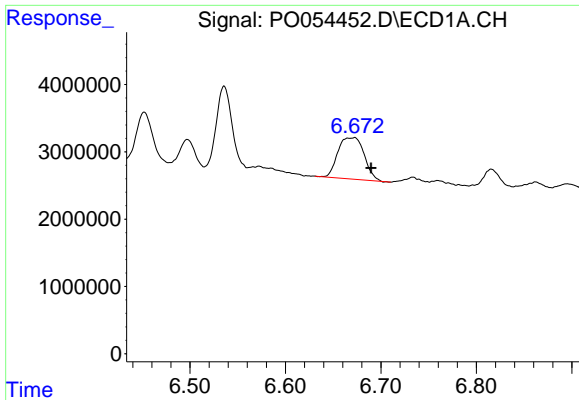
#30 AR-1254-5

R.T.: 0.000 min
 Exp R.T. : 7.226 min
 Response: 0
 Conc: N.D.



#30 AR-1254-5

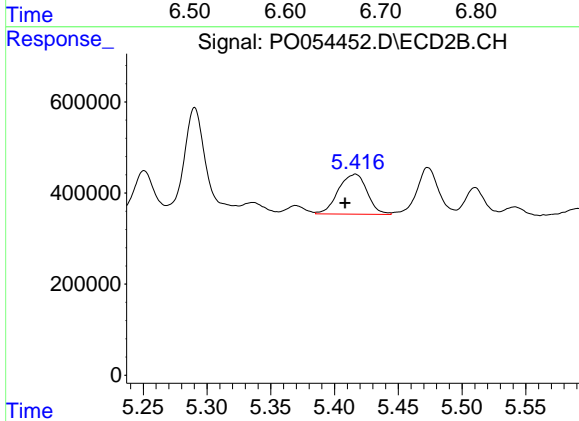
R.T.: 5.864 min
 Delta R.T.: -0.032 min
 Response: 66626
 Conc: 3.32 ng/ml



#31 AR-1260-1

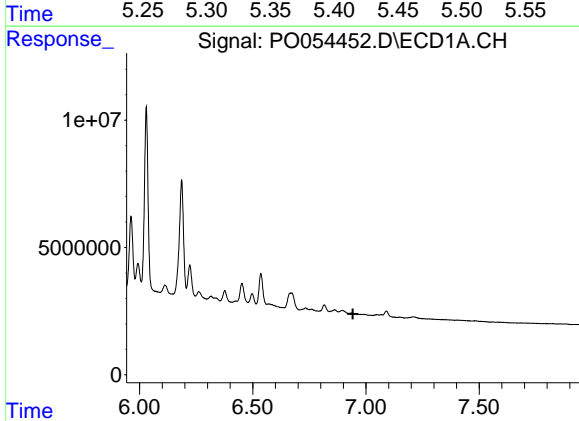
R.T.: 6.672 min
 Delta R.T.: -0.017 min
 Response: 11818287
 Conc: 130.97 ng/ml

Instrument :
 ECD_O
 ClientSampleId :



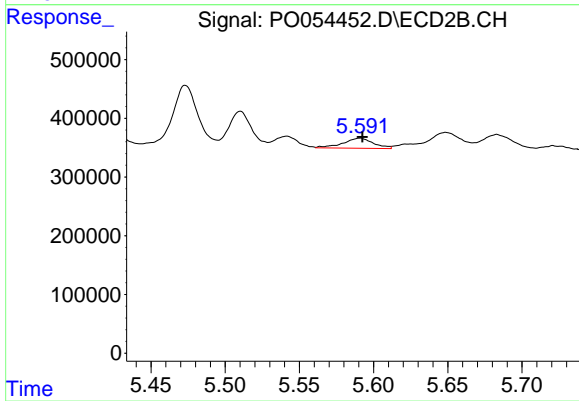
#31 AR-1260-1

R.T.: 5.416 min
 Delta R.T.: 0.008 min
 Response: 1382758
 Conc: 75.47 ng/ml



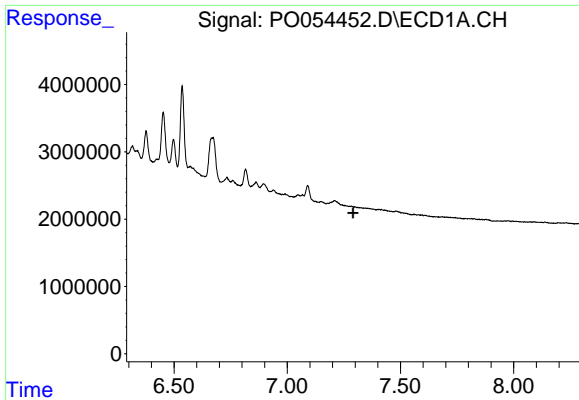
#32 AR-1260-2

R.T.: 0.000 min
 Exp R.T. : 6.942 min
 Response: 0
 Conc: N.D.



#32 AR-1260-2

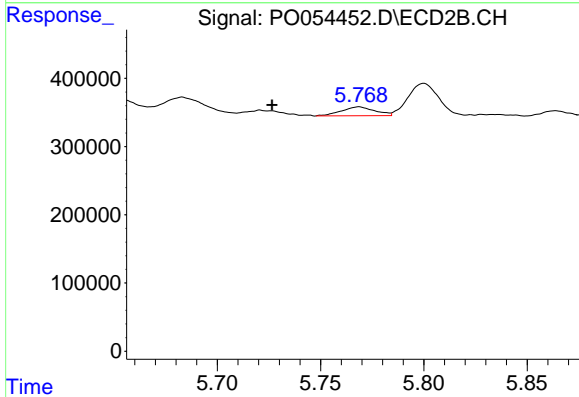
R.T.: 5.591 min
 Delta R.T.: -0.002 min
 Response: 244792
 Conc: 10.99 ng/ml



#33 AR-1260-3

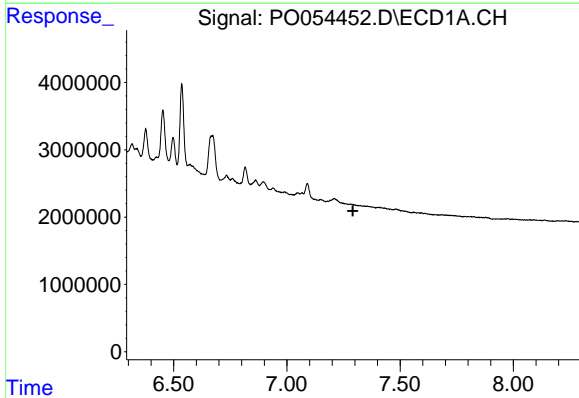
R.T.: 0.000 min
 Exp R.T. : 7.290 min
 Response: 0
 Conc: N.D.

Instrument :
 ECD_O
 ClientSampleId :



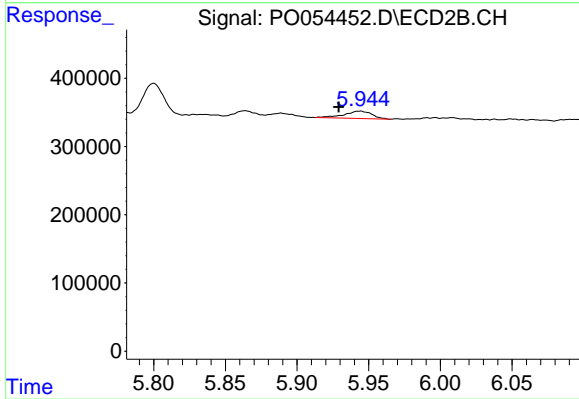
#33 AR-1260-3

R.T.: 5.769 min
 Delta R.T.: 0.042 min
 Response: 147637
 Conc: 7.20 ng/ml



#36 AR-1262-1

R.T.: 0.000 min
 Exp R.T. : 7.291 min
 Response: 0
 Conc: N.D.



#36 AR-1262-1

R.T.: 5.944 min
 Delta R.T.: 0.015 min
 Response: 147424
 Conc: 5.57 ng/ml