

Data Path : Z:\pestpcbsrv\HPCHEM1\ECD_0\Data\P0031519\
 Data File : P0054443.D
 Signal(s) : Signal #1: ECD1A.CH Signal #2: ECD2B.CH
 Acq On : 15 Mar 2019 22:30
 Operator : SM/SJ
 Sample : PB117965BL
 Misc :
 ALS Vial : 23 Sample Multiplier: 1

Instrument :
 ECD_0
 ClientSampleId :
 PB117965BL

Integration File signal 1: autoint1.e
 Integration File signal 2: autoint2.e
 Quant Time: Mar 15 23:01:50 2019
 Quant Method : Z:\pestpcbsrv\HPCHEM1\ECD_0\methods\P0031419.M
 Quant Title : GC EXTRACTABLES
 QLast Update : Fri Mar 15 05:00:00 2019
 Response via : Initial Calibration
 Integrator: ChemStation 6890 Scale Mode: Small noise peaks clipped

Volume Inj. : 2 µl
 Signal #1 Phase : ZB-MR1 Signal #2 Phase: ZB-MR2
 Signal #1 Info : 30Mx0.32mmx 0.50µ Signal #2 Info : 30M x 0.32mm x 0.25µm

Compound	RT#1	RT#2	Resp#1	Resp#2	ng/ml	ng/ml

System Monitoring Compounds						
1) SA Tetrachlo...	4.012	3.104	120.6E6	5390342	24.495	21.214
2) SA Decachlor...	9.318	7.664	32726449	6927472	23.757	23.424

Target Compounds

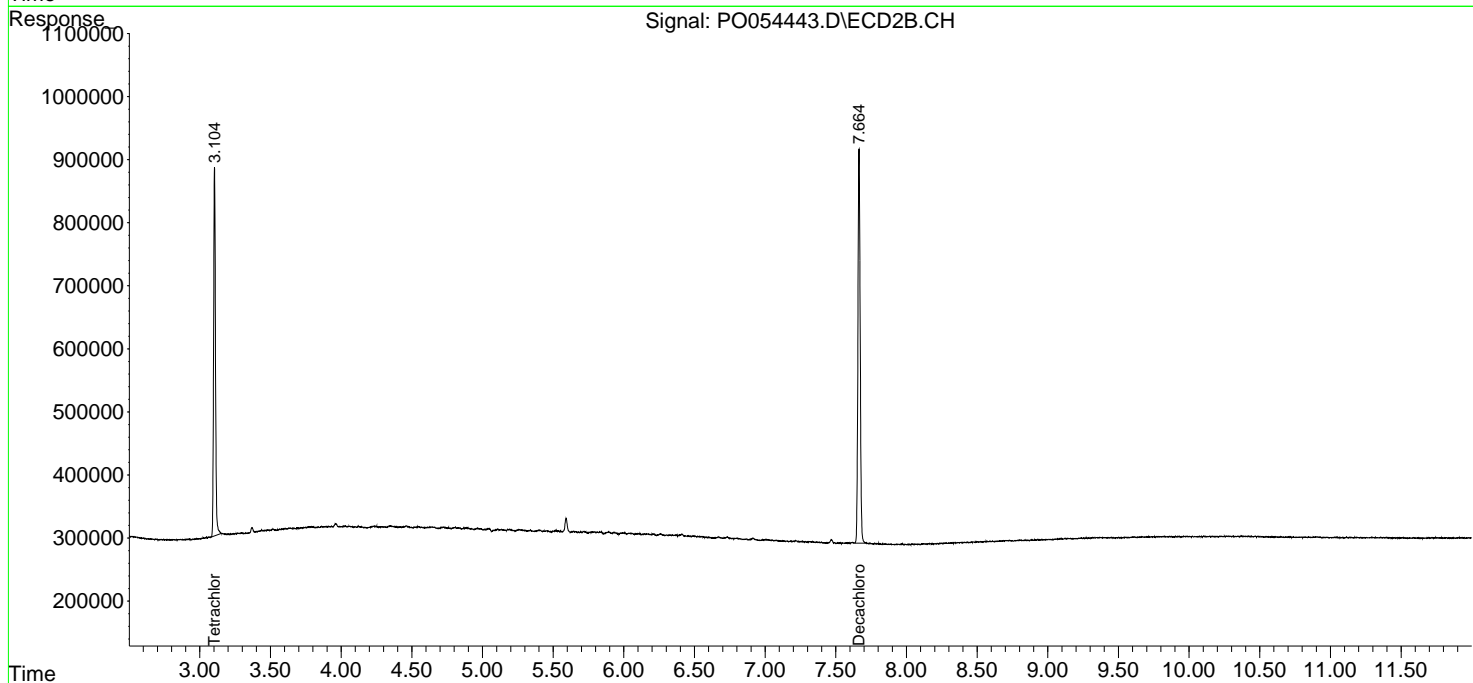
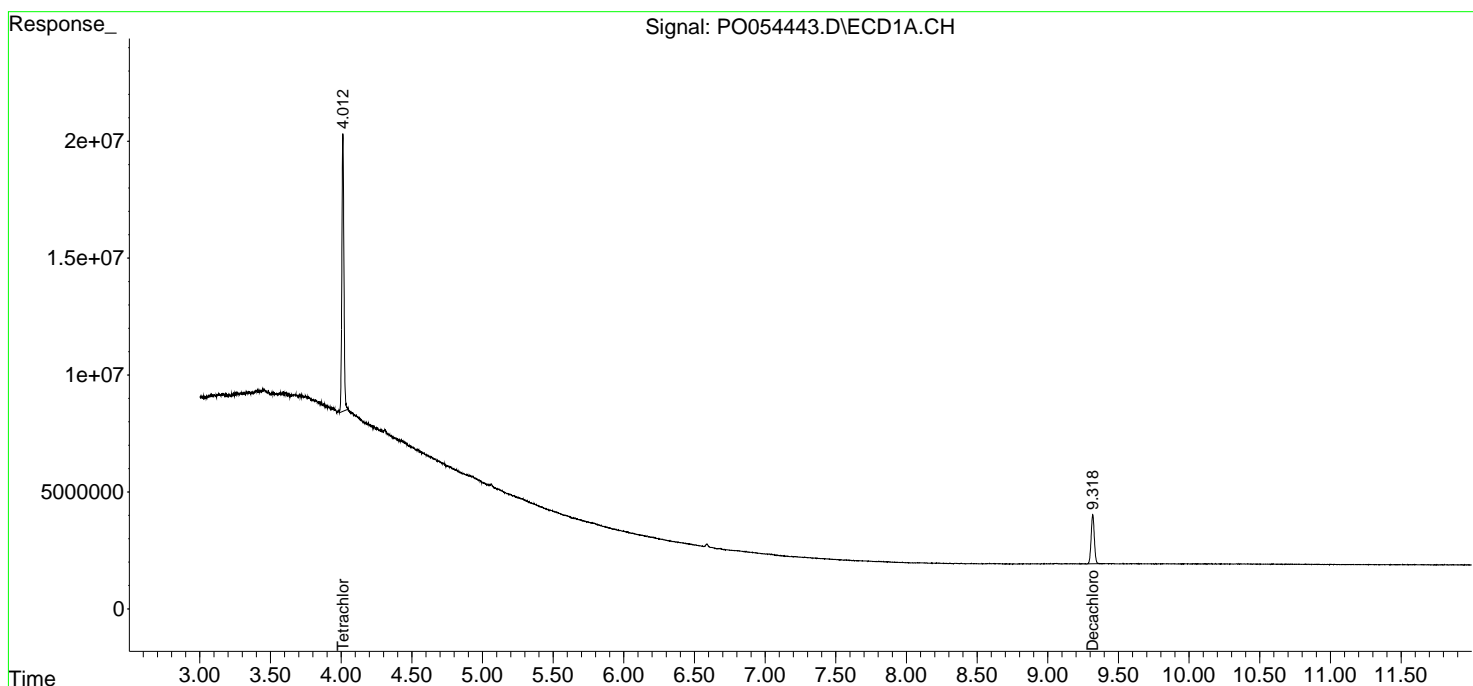
(f)=RT Delta > 1/2 Window (#)=Amounts differ by > 25% (m)=manual int.

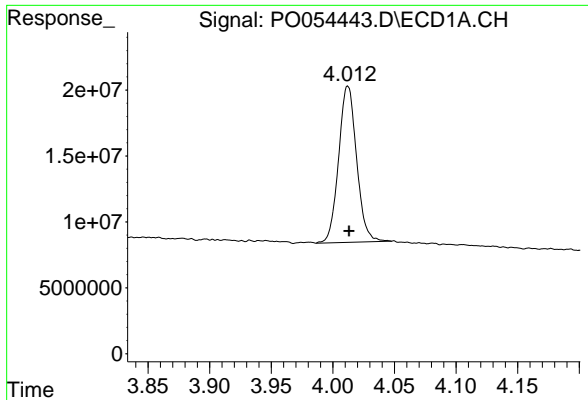
Data Path : Z:\pestpcbsrv\HPCHEM1\ECD_0\Data\P0031519\
 Data File : P0054443.D
 Signal(s) : Signal #1: ECD1A.CH Signal #2: ECD2B.CH
 Acq On : 15 Mar 2019 22:30
 Operator : SM/SJ
 Sample : PB117965BL
 Misc :
 ALS Vial : 23 Sample Multiplier: 1

Instrument :
 ECD_O
 ClientSampleId :
 PB117965BL

Integration File signal 1: autoint1.e
 Integration File signal 2: autoint2.e
 Quant Time: Mar 15 23:01:50 2019
 Quant Method : Z:\pestpcbsrv\HPCHEM1\ECD_0\methods\P0031419.M
 Quant Title : GC EXTRACTABLES
 QLast Update : Fri Mar 15 05:00:00 2019
 Response via : Initial Calibration
 Integrator: ChemStation 6890 Scale Mode: Small noise peaks clipped

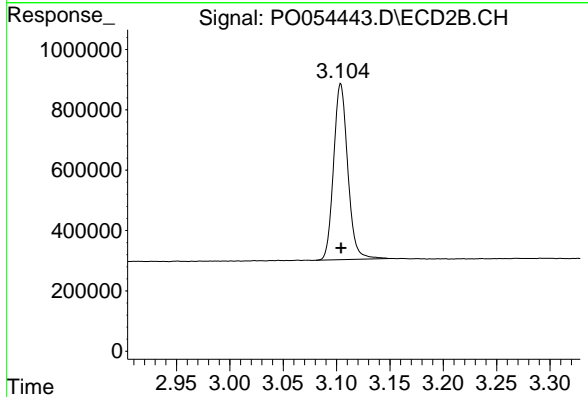
Volume Inj. : 2 µl
 Signal #1 Phase : ZB-MR1 Signal #2 Phase: ZB-MR2
 Signal #1 Info : 30Mx0.32mmx 0.50µ Signal #2 Info : 30M x 0.32mm x 0.25µm



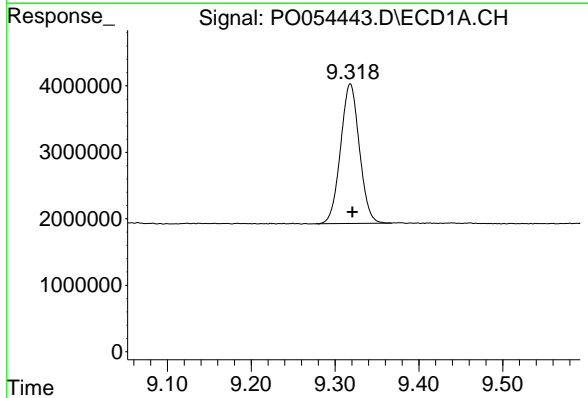


#1 Tetrachloro-m-xylene
 R.T.: 4.012 min
 Delta R.T.: 0.000 min
 Response: 120634727
 Conc: 24.50 ng/ml

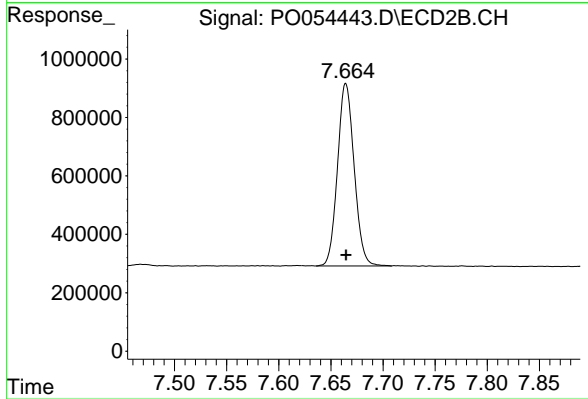
Instrument :
 ECD_O
 ClientSampled :
 PB117965BL



#1 Tetrachloro-m-xylene
 R.T.: 3.104 min
 Delta R.T.: 0.000 min
 Response: 5390342
 Conc: 21.21 ng/ml



#2 Decachlorobiphenyl
 R.T.: 9.318 min
 Delta R.T.: -0.002 min
 Response: 32726449
 Conc: 23.76 ng/ml



#2 Decachlorobiphenyl
 R.T.: 7.664 min
 Delta R.T.: 0.000 min
 Response: 6927472
 Conc: 23.42 ng/ml