

Data Path : Z:\pestpcbsrv\HPCHEM1\ECD_0\Data\P0031620\
 Data File : P0067287.D
 Signal(s) : Signal #1: ECD1A.CH Signal #2: ECD2B.CH
 Acq On : 16 Mar 2020 20:09
 Operator : DD\AJ
 Sample : L1942-06
 Misc :
 ALS Vial : 18 Sample Multiplier: 1

Instrument :
 ECD_0
 ClientSampleId :
 TP-10-DA

Integration File signal 1: autoint1.e
 Integration File signal 2: autoint2.e
 Quant Time: Mar 17 12:36:18 2020
 Quant Method : Z:\pestpcbsrv\HPCHEM1\ECD_0\methods\P0031620.M
 Quant Title : GC EXTRACTABLES
 QLast Update : Tue Mar 17 02:39:09 2020
 Response via : Initial Calibration
 Integrator: ChemStation 6890 Scale Mode: Small noise peaks clipped

Volume Inj. : 2 µl
 Signal #1 Phase : ZB-MR1 Signal #2 Phase: ZB-MR2
 Signal #1 Info : 30Mx0.32mmx 0.50µ Signal #2 Info : 30M x 0.32mm x 0.25µm

Compound	RT#1	RT#2	Resp#1	Resp#2	ng/ml	ng/ml

System Monitoring Compounds						
1) SA Tetrachlo...	4.108	3.398	657057	319851	24.884	20.129
2) SA Decachlor...	9.560	8.269	704232	618463	20.023m	17.845

Target Compounds

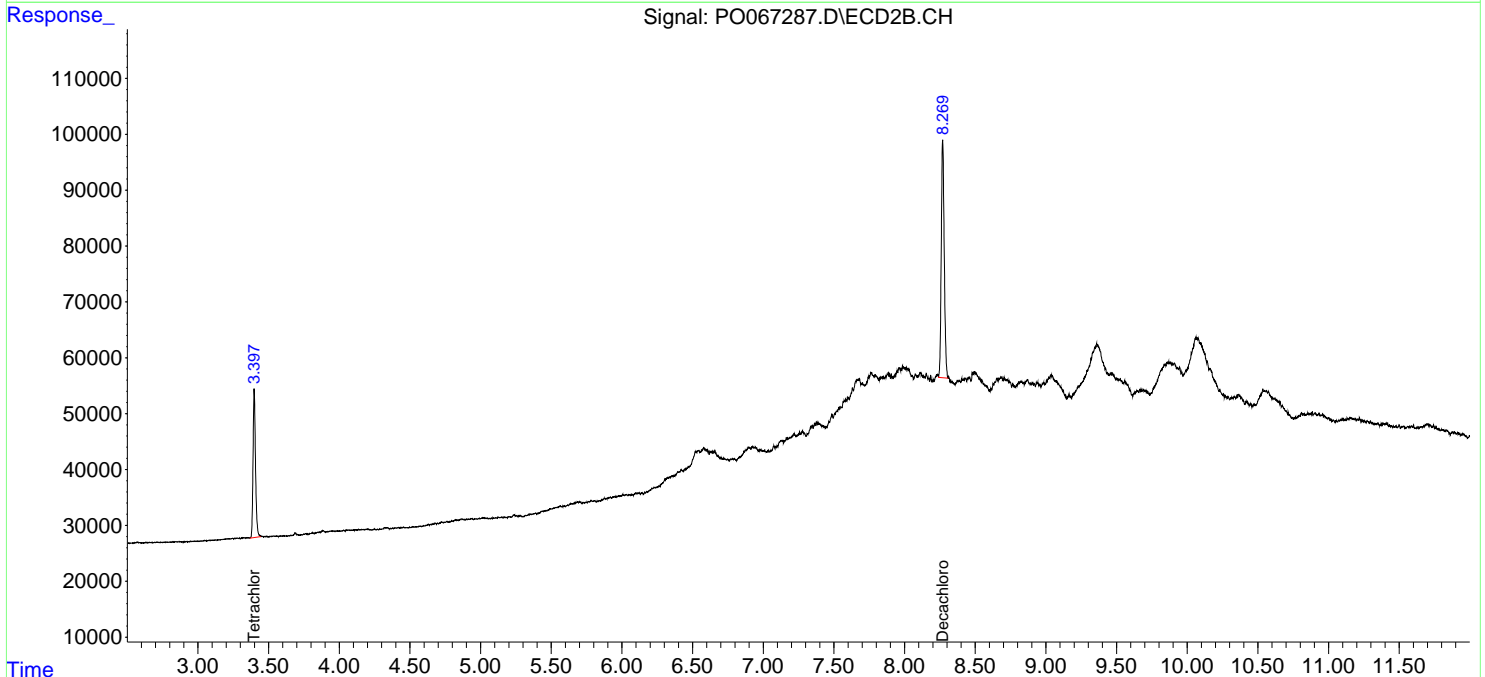
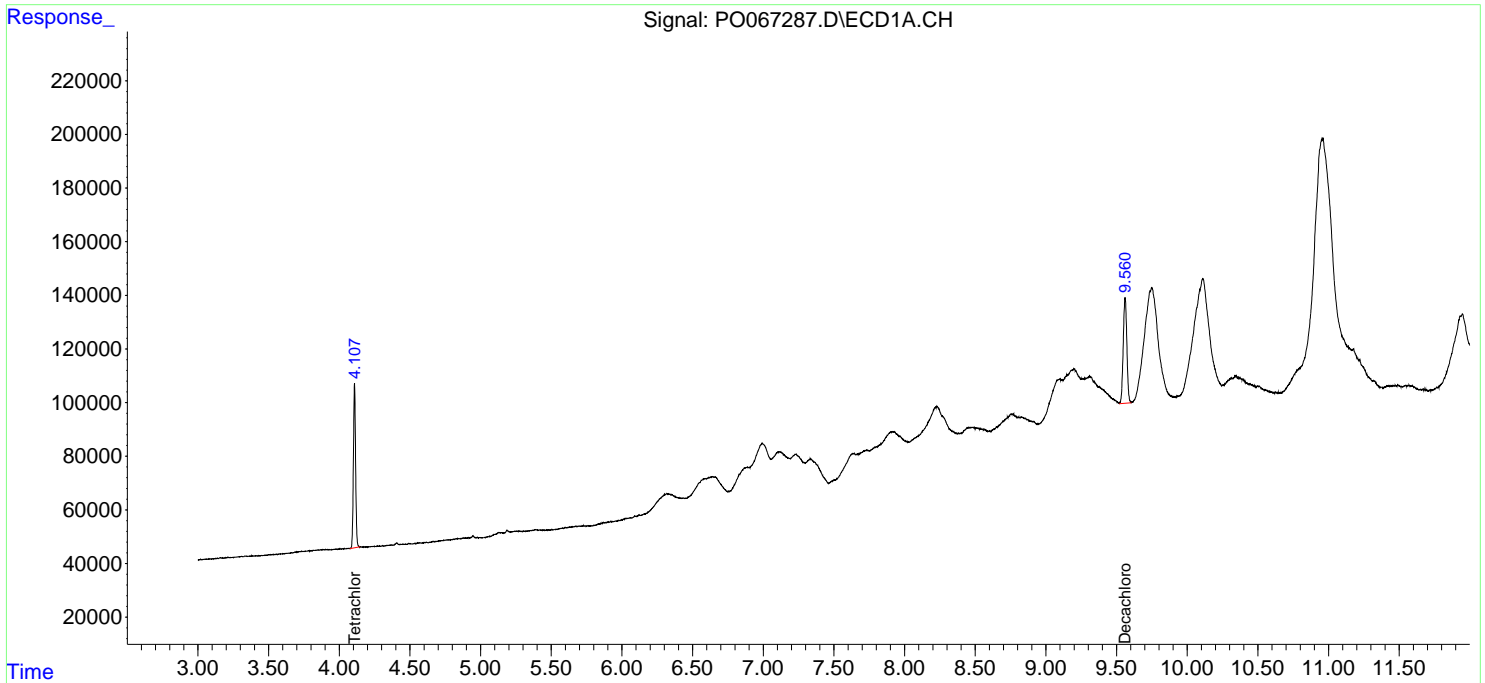
(f)=RT Delta > 1/2 Window (#)=Amounts differ by > 25% (m)=manual int.

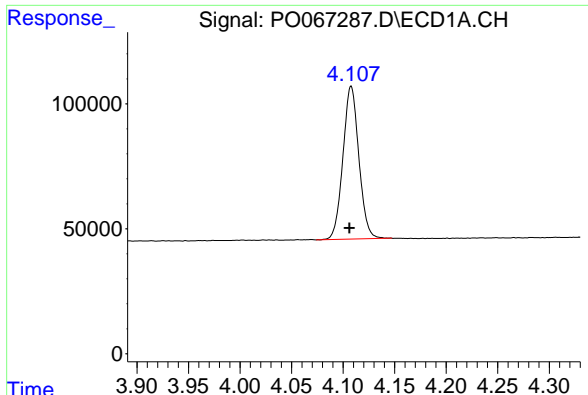
Data Path : Z:\pestpcbsrv\HPCHEM1\ECD_O\Data\P0031620\
 Data File : P0067287.D
 Signal(s) : Signal #1: ECD1A.CH Signal #2: ECD2B.CH
 Acq On : 16 Mar 2020 20:09
 Operator : DD\AJ
 Sample : L1942-06
 Misc :
 ALS Vial : 18 Sample Multiplier: 1

Instrument :
 ECD_O
ClientSampled :
 TP-10-DA

Integration File signal 1: autoint1.e
 Integration File signal 2: autoint2.e
 Quant Time: Mar 17 12:36:18 2020
 Quant Method : Z:\pestpcbsrv\HPCHEM1\ECD_O\methods\P0031620.M
 Quant Title : GC EXTRACTABLES
 QLast Update : Tue Mar 17 02:39:09 2020
 Response via : Initial Calibration
 Integrator: ChemStation 6890 Scale Mode: Small noise peaks clipped

Volume Inj. : 2 µl
 Signal #1 Phase : ZB-MR1 Signal #2 Phase: ZB-MR2
 Signal #1 Info : 30Mx0.32mmx 0.50µ Signal #2 Info : 30M x 0.32mm x 0.25µm

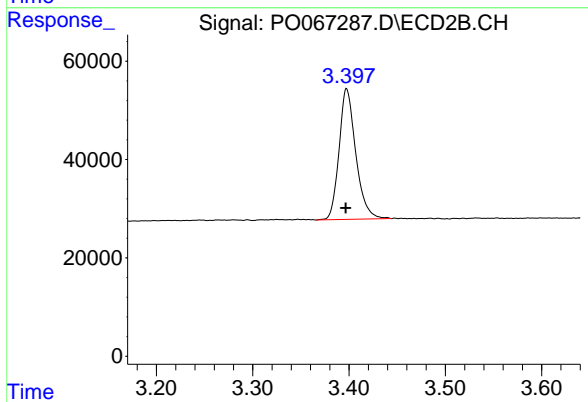




#1 Tetrachloro-m-xylene

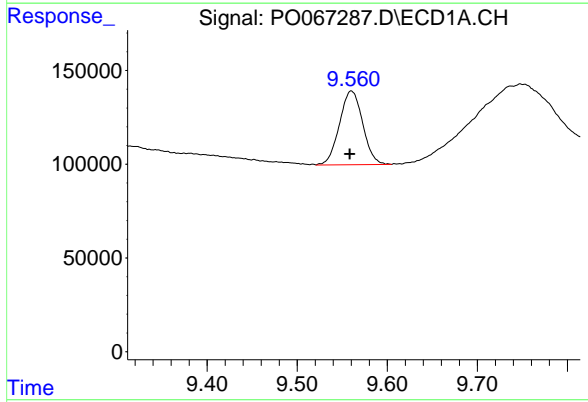
R.T.: 4.108 min
 Delta R.T.: 0.002 min
 Response: 657057
 Conc: 24.88 ng/ml

Instrument :
 ECD_O
 ClientSampleId :
 TP-10-DA



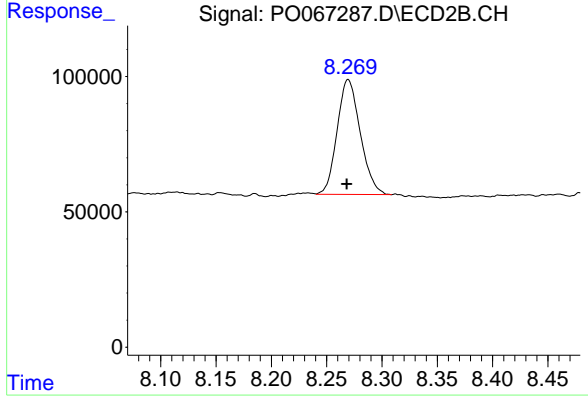
#1 Tetrachloro-m-xylene

R.T.: 3.398 min
 Delta R.T.: 0.001 min
 Response: 319851
 Conc: 20.13 ng/ml



#2 Decachlorobiphenyl

R.T.: 9.560 min
 Delta R.T.: 0.001 min
 Response: 704232
 Conc: 20.02 ng/ml m



#2 Decachlorobiphenyl

R.T.: 8.269 min
 Delta R.T.: 0.001 min
 Response: 618463
 Conc: 17.85 ng/ml