

Data Path : Z:\pestpcbsrv\HPCHEM1\ECD\_0\Data\P0031620\  
 Data File : P0067295.D  
 Signal(s) : Signal #1: ECD1A.CH Signal #2: ECD2B.CH  
 Acq On : 16 Mar 2020 22:41  
 Operator : DD\AJ  
 Sample : L1913-15  
 Misc :  
 ALS Vial : 24 Sample Multiplier: 1

**Instrument :**  
 ECD\_0  
**ClientSampleId :**  
 MK-031220-2-5-COMP-B4

**Manual Integrations**  
**APPROVED**  
 Sohil  
 3/17/2020 2:07:34 PM

Integration File signal 1: autoint1.e  
 Integration File signal 2: autoint2.e  
 Quant Time: Mar 17 04:21:09 2020  
 Quant Method : Z:\pestpcbsrv\HPCHEM1\ECD\_0\methods\P0031620.M  
 Quant Title : GC EXTRACTABLES  
 QLast Update : Tue Mar 17 02:39:09 2020  
 Response via : Initial Calibration  
 Integrator: ChemStation 6890 Scale Mode: Small noise peaks clipped

Volume Inj. : 2 µl  
 Signal #1 Phase : ZB-MR1 Signal #2 Phase: ZB-MR2  
 Signal #1 Info : 30Mx0.32mmx 0.50µ Signal #2 Info : 30M x 0.32mm x 0.25µm

Compound	RT#1	RT#2	Resp#1	Resp#2	ng/ml	ng/ml
-----						
System Monitoring Compounds						
1) SA Tetrachlo...	4.107	3.397	677201	321311	25.646m	20.221
2) SA Decachlor...	9.559	8.268	726681	611275	20.662	17.638
Target Compounds						
31) L7 AR-1260-1	6.825	5.899	37188	31488	23.510m	22.136
32) L7 AR-1260-2	7.080	6.087	165436	33669	70.190	18.669 #
33) L7 AR-1260-3	7.434	6.235	39897	31672	20.085m	20.731
34) L7 AR-1260-4	7.659	6.698	28308	22394	14.744m	16.270
35) L7 AR-1260-5	7.965	6.943	64957	41719	14.318m	12.831
-----						

(f)=RT Delta > 1/2 Window (#)=Amounts differ by > 25% (m)=manual int.

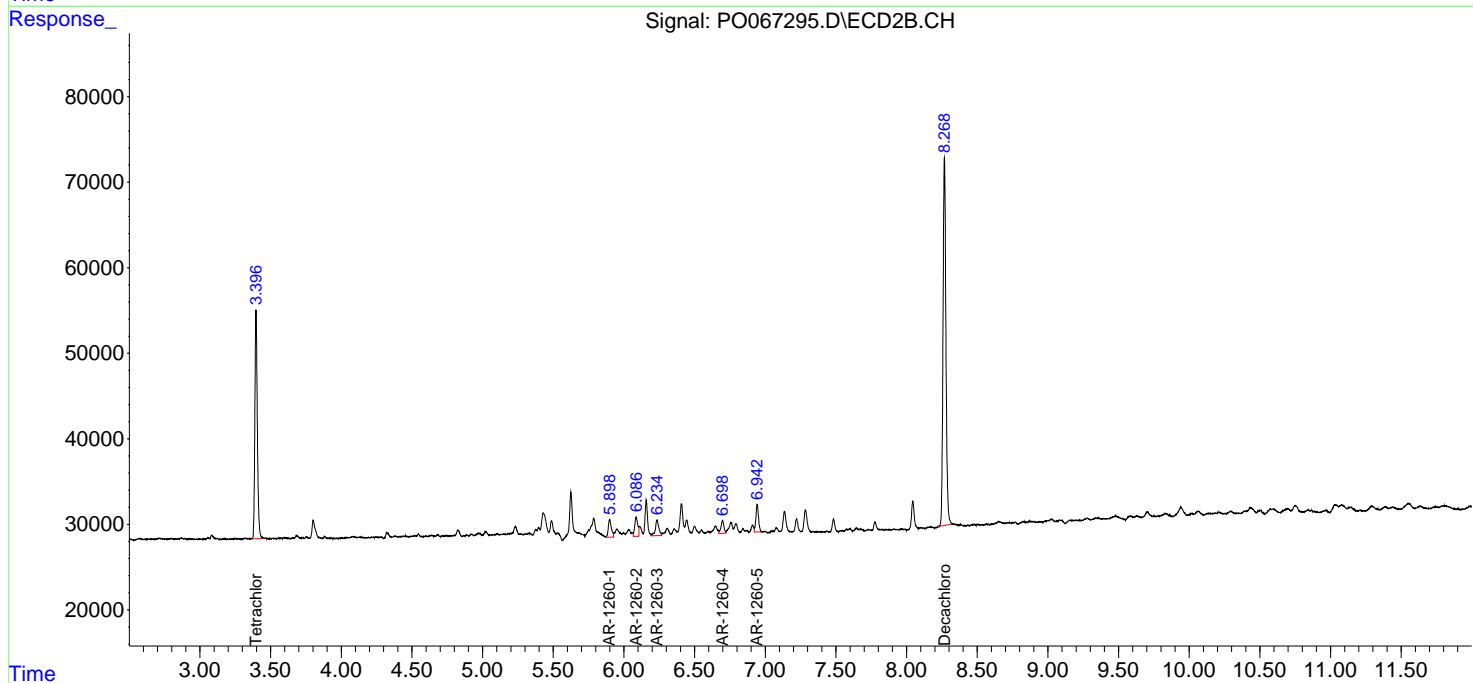
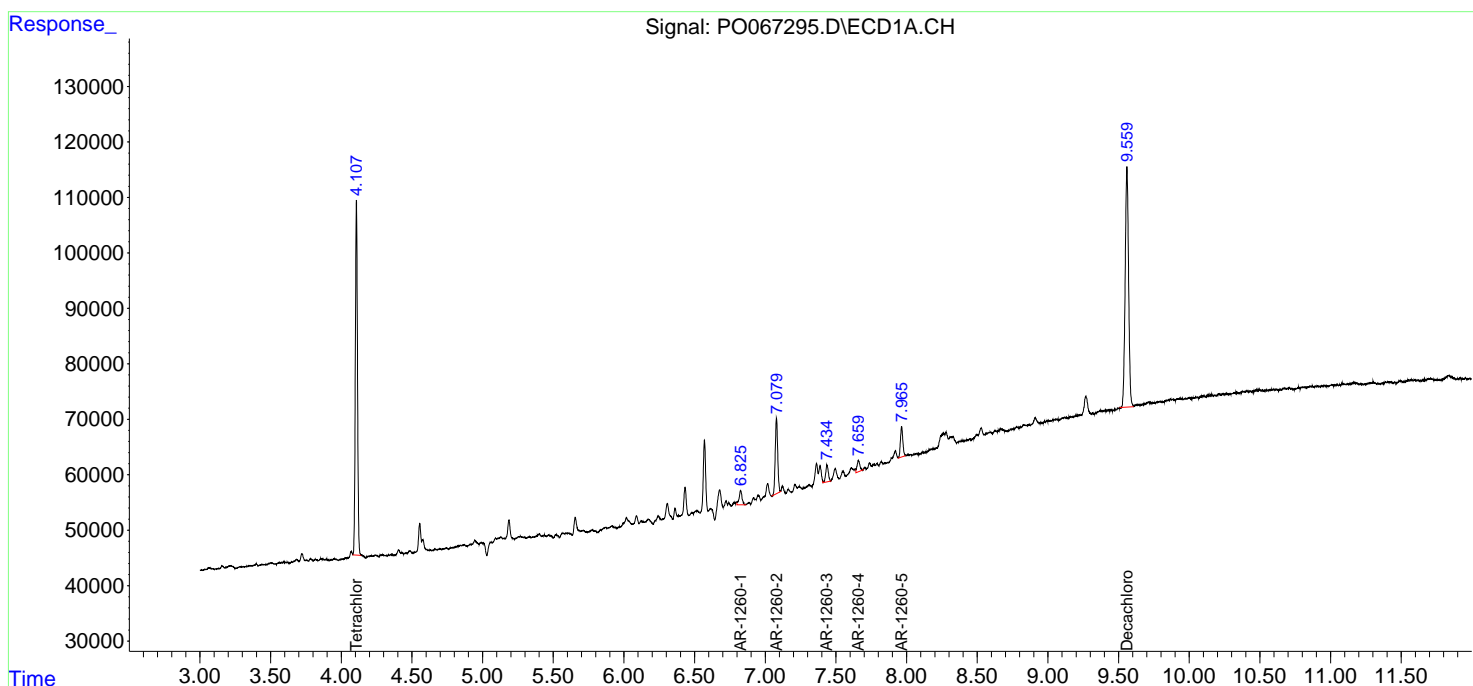
Data Path : Z:\pestpcbsrv\HPCHEM1\ECD\_O\Data\P0031620\  
 Data File : P0067295.D  
 Signal(s) : Signal #1: ECD1A.CH Signal #2: ECD2B.CH  
 Acq On : 16 Mar 2020 22:41  
 Operator : DD\AJ  
 Sample : L1913-15  
 Misc :  
 ALS Vial : 24 Sample Multiplier: 1

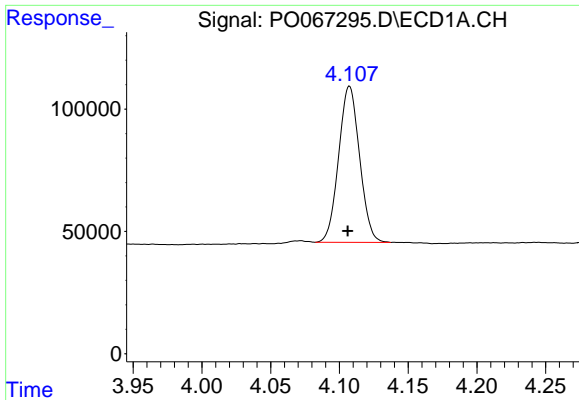
**Instrument :**  
 ECD\_O  
**Client Sampled :**  
 MK-031220-2-5-COMP-B4

**Manual Integrations**  
**APPROVED**  
 Sohil  
 3/17/2020 2:07:34 PM

Integration File signal 1: autoint1.e  
 Integration File signal 2: autoint2.e  
 Quant Time: Mar 17 04:21:09 2020  
 Quant Method : Z:\pestpcbsrv\HPCHEM1\ECD\_O\methods\P0031620.M  
 Quant Title : GC EXTRACTABLES  
 QLast Update : Tue Mar 17 02:39:09 2020  
 Response via : Initial Calibration  
 Integrator: ChemStation 6890 Scale Mode: Small noise peaks clipped

Volume Inj. : 2 µl  
 Signal #1 Phase : ZB-MR1 Signal #2 Phase: ZB-MR2  
 Signal #1 Info : 30Mx0.32mmx 0.50µ Signal #2 Info : 30M x 0.32mm x 0.25µm

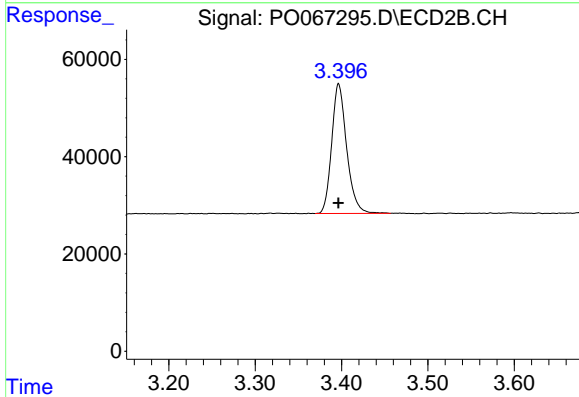




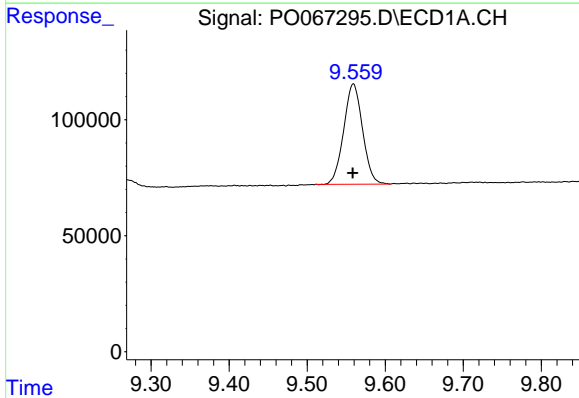
#1 Tetrachloro-m-xylene  
 R.T.: 4.107 min  
 Delta R.T.: 0.000 min  
 Response: 677201  
 Conc: 25.65 ng/ml m

**Instrument :**  
 ECD\_O  
**ClientSampleId :**  
 MK-031220-2-5-COMP-B4

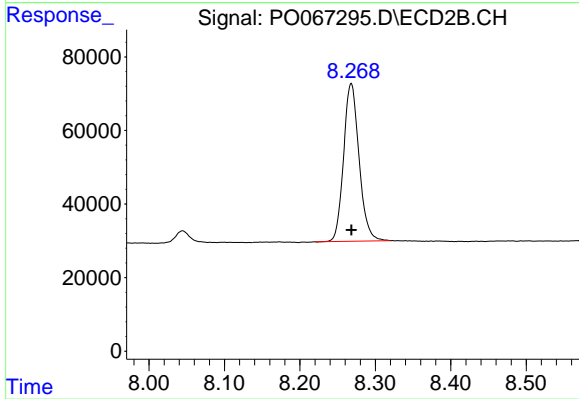
**Manual Integrations**  
**APPROVED**  
 Sohil  
 3/17/2020 2:07:34 PM



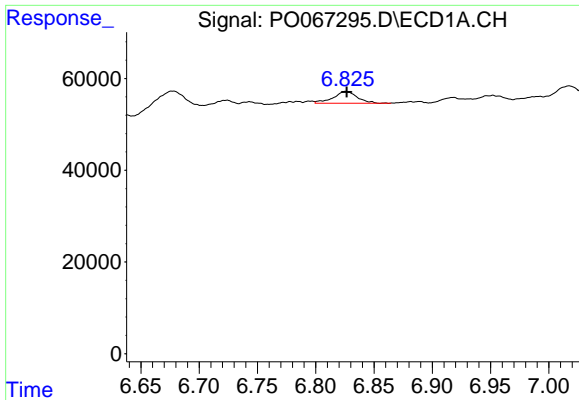
#1 Tetrachloro-m-xylene  
 R.T.: 3.397 min  
 Delta R.T.: 0.000 min  
 Response: 321311  
 Conc: 20.22 ng/ml



#2 Decachlorobiphenyl  
 R.T.: 9.559 min  
 Delta R.T.: 0.000 min  
 Response: 726681  
 Conc: 20.66 ng/ml



#2 Decachlorobiphenyl  
 R.T.: 8.268 min  
 Delta R.T.: 0.000 min  
 Response: 611275  
 Conc: 17.64 ng/ml

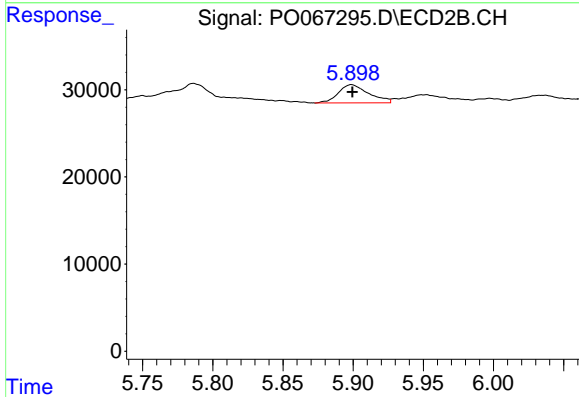


#31 AR-1260-1

R.T.: 6.825 min  
 Delta R.T.: -0.001 min  
 Response: 37188  
 Conc: 23.51 ng/ml m

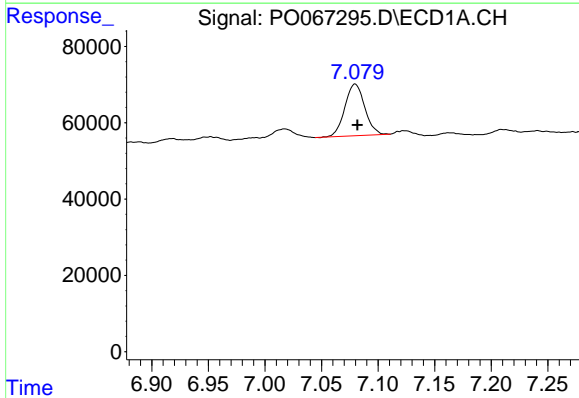
**Instrument :**  
 ECD\_O  
**ClientSampleId :**  
 MK-031220-2-5-COMP-B4

**Manual Integrations**  
**APPROVED**  
 Sohil  
 3/17/2020 2:07:34 PM



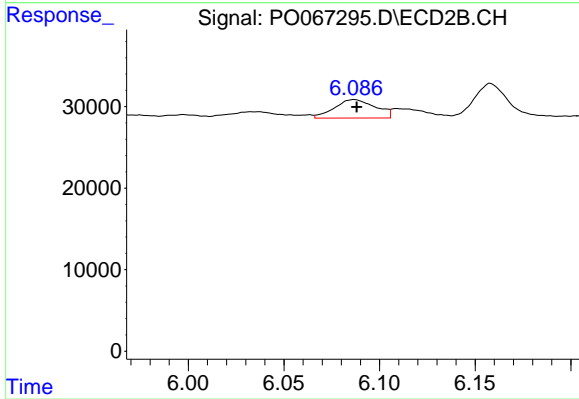
#31 AR-1260-1

R.T.: 5.899 min  
 Delta R.T.: 0.000 min  
 Response: 31488  
 Conc: 22.14 ng/ml



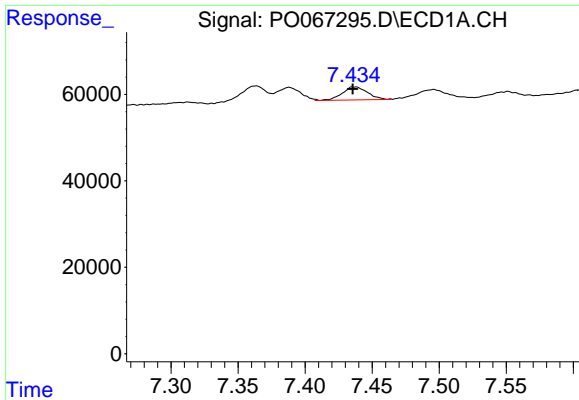
#32 AR-1260-2

R.T.: 7.080 min  
 Delta R.T.: -0.002 min  
 Response: 165436  
 Conc: 70.19 ng/ml



#32 AR-1260-2

R.T.: 6.087 min  
 Delta R.T.: -0.001 min  
 Response: 33669  
 Conc: 18.67 ng/ml

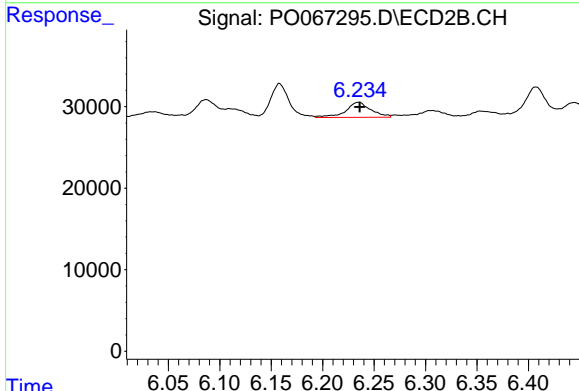


#33 AR-1260-3

R.T.: 7.434 min  
 Delta R.T.: -0.001 min  
 Response: 39897  
 Conc: 20.08 ng/ml m

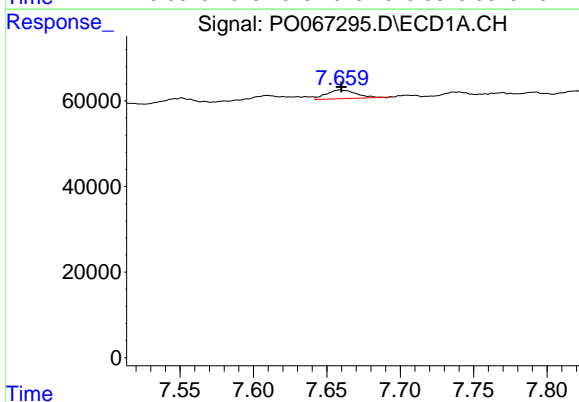
**Instrument :**  
 ECD\_O  
**ClientSampleId :**  
 MK-031220-2-5-COMP-B4

**Manual Integrations**  
**APPROVED**  
 Sohil  
 3/17/2020 2:07:34 PM



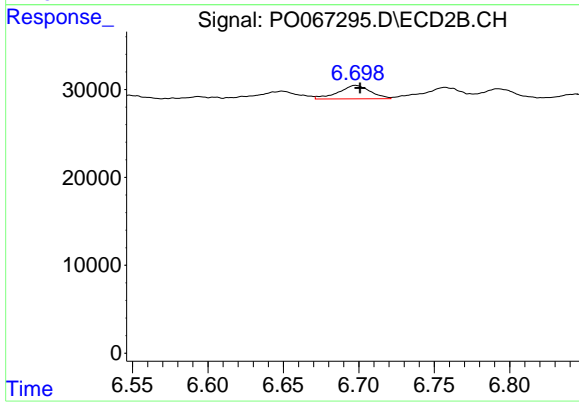
#33 AR-1260-3

R.T.: 6.235 min  
 Delta R.T.: -0.001 min  
 Response: 31672  
 Conc: 20.73 ng/ml



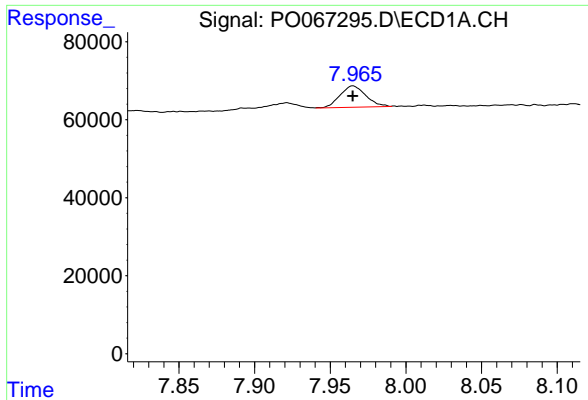
#34 AR-1260-4

R.T.: 7.659 min  
 Delta R.T.: -0.001 min  
 Response: 28308  
 Conc: 14.74 ng/ml m



#34 AR-1260-4

R.T.: 6.698 min  
 Delta R.T.: -0.003 min  
 Response: 22394  
 Conc: 16.27 ng/ml



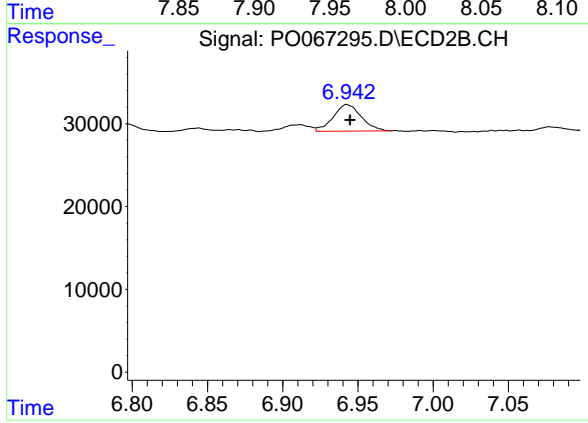
#35 AR-1260-5

R.T.: 7.965 min  
Delta R.T.: 0.000 min  
Response: 64957  
Conc: 14.32 ng/ml m

Instrument :  
ECD\_O  
ClientSampleId :  
MK-031220-2-5-COMP-B4

Manual Integrations  
APPROVED

Sohil  
3/17/2020 2:07:34 PM



#35 AR-1260-5

R.T.: 6.943 min  
Delta R.T.: -0.002 min  
Response: 41719  
Conc: 12.83 ng/ml