

Data Path : Z:\pestpcbsrv\HPCHEM1\ECD_0\Data\P0031919\
 Data File : P0054468.D
 Signal(s) : Signal #1: ECD1A.CH Signal #2: ECD2B.CH
 Acq On : 19 Mar 2019 21:38
 Operator : SM/SJ
 Sample : AR1221ICC500
 Misc :
 ALS Vial : 8 Sample Multiplier: 1

Instrument :
 ECD_0
 ClientSampleId :
 AR1221ICC500

Integration File signal 1: autoint1.e
 Integration File signal 2: autoint2.e
 Quant Time: Mar 20 05:47:55 2019
 Quant Method : Z:\pestpcbsrv\HPCHEM1\ECD_0\methods\P0031919.M
 Quant Title : GC EXTRACTABLES
 QLast Update : Wed Mar 20 05:47:28 2019
 Response via : Initial Calibration
 Integrator: ChemStation 6890 Scale Mode: Small noise peaks clipped

Volume Inj. : 2 µl
 Signal #1 Phase : ZB-MR1 Signal #2 Phase: ZB-MR2
 Signal #1 Info : 30Mx0.32mmx 0.50µ Signal #2 Info : 30M x 0.32mm x 0.25µm

Compound	RT#1	RT#2	Resp#1	Resp#2	ng/ml	ng/ml

System Monitoring Compounds						
1) SA Tetrachlo...	4.340	3.653	166.3E6	22832413	50.000	50.000
2) SA Decachlor...	9.980	8.654	33664363	19433085	50.000	50.000
Target Compounds						
8) L2 AR-1221-1	4.550	3.869	17222668	3011237	500.000	500.000
9) L2 AR-1221-2	4.635	3.954	13180247	2378573	500.000	500.000
10) L2 AR-1221-3	4.711	4.030	39141835	6971347	500.000	500.000

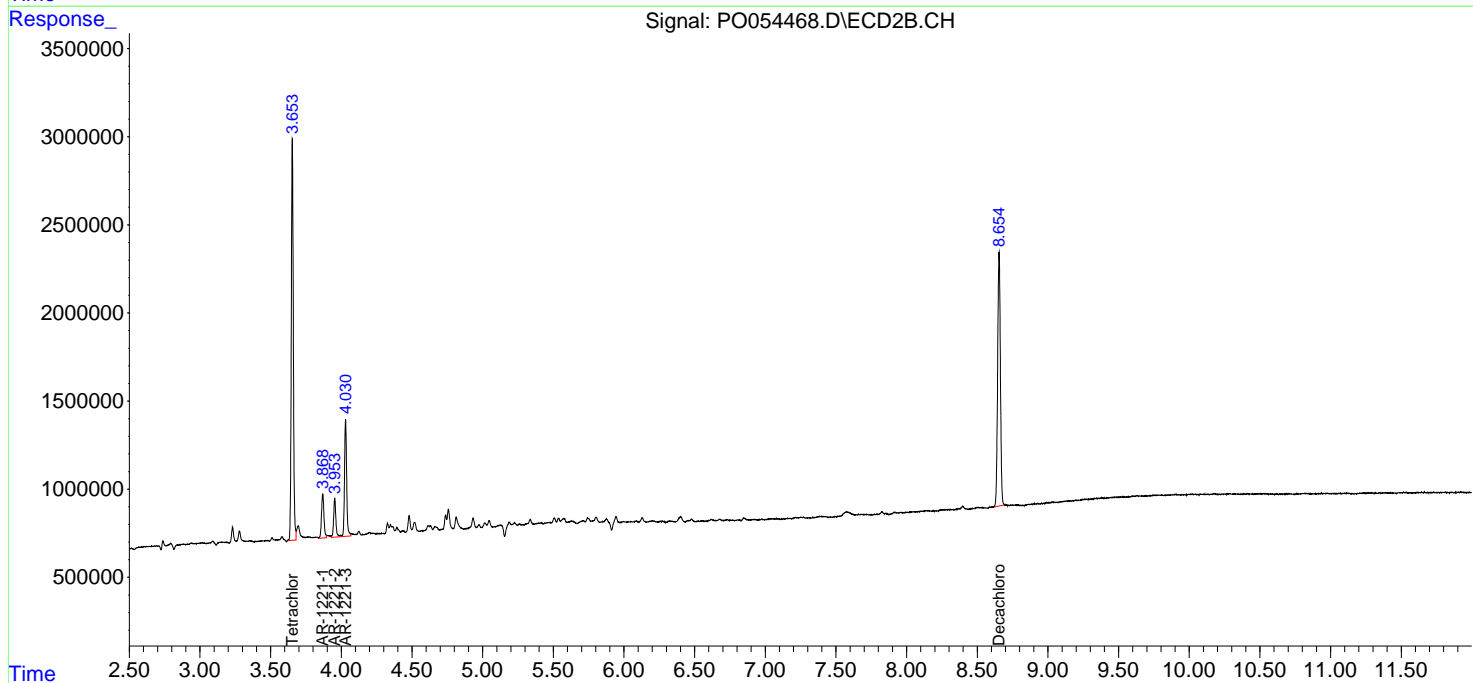
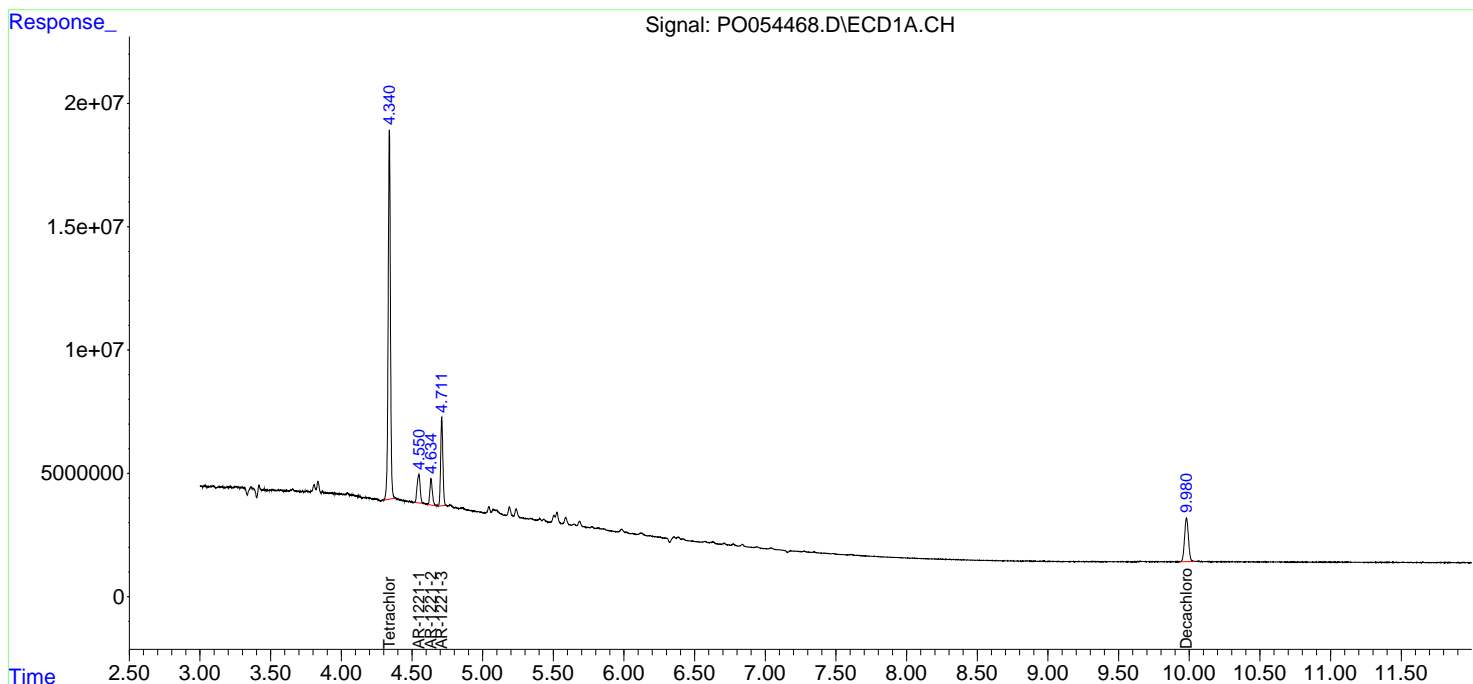
(f)=RT Delta > 1/2 Window (#)=Amounts differ by > 25% (m)=manual int.

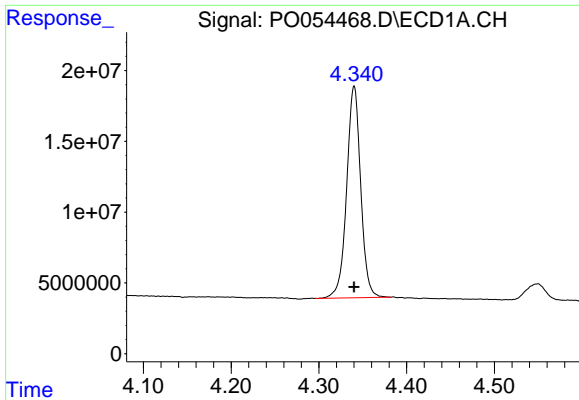
Data Path : Z:\pestpcbsrv\HPCHEM1\ECD_O\Data\P0031919\
 Data File : P0054468.D
 Signal(s) : Signal #1: ECD1A.CH Signal #2: ECD2B.CH
 Acq On : 19 Mar 2019 21:38
 Operator : SM/SJ
 Sample : AR1221ICC500
 Misc :
 ALS Vial : 8 Sample Multiplier: 1

Instrument :
 ECD_O
 ClientSampleId :
 AR1221ICC500

Integration File signal 1: autoint1.e
 Integration File signal 2: autoint2.e
 Quant Time: Mar 20 05:47:55 2019
 Quant Method : Z:\pestpcbsrv\HPCHEM1\ECD_O\methods\P0031919.M
 Quant Title : GC EXTRACTABLES
 QLast Update : Wed Mar 20 05:47:28 2019
 Response via : Initial Calibration
 Integrator: ChemStation 6890 Scale Mode: Small noise peaks clipped

Volume Inj. : 2 µl
 Signal #1 Phase : ZB-MR1 Signal #2 Phase: ZB-MR2
 Signal #1 Info : 30Mx0.32mmx 0.50µ Signal #2 Info : 30M x 0.32mm x 0.25µm

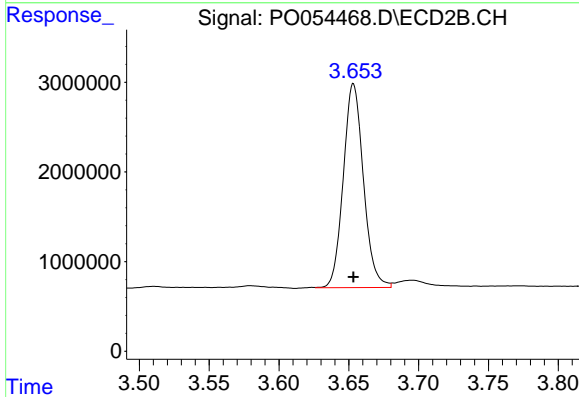




#1 Tetrachloro-m-xylene

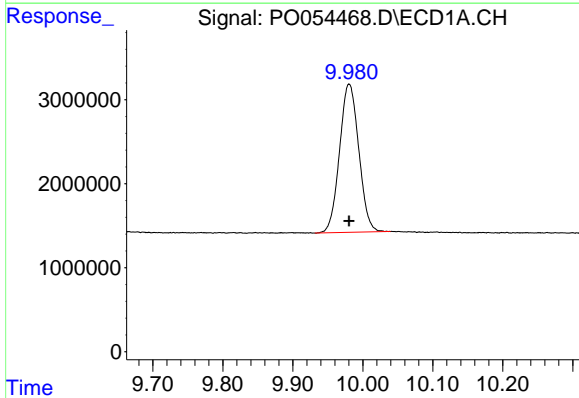
R.T.: 4.340 min
 Delta R.T.: 0.000 min
 Response: 166284919
 Conc: 50.00 ng/ml

Instrument :
 ECD_O
 ClientSampleId :
 AR1221ICC500



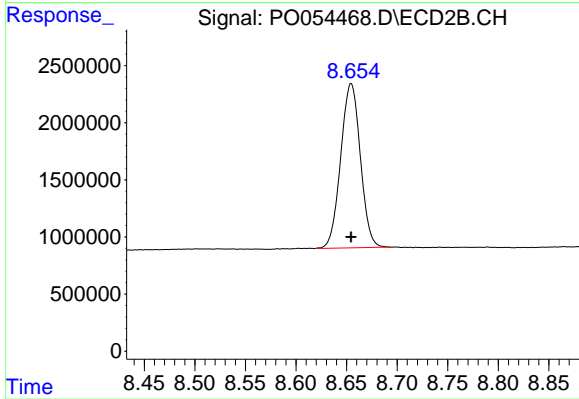
#1 Tetrachloro-m-xylene

R.T.: 3.653 min
 Delta R.T.: 0.000 min
 Response: 22832413
 Conc: 50.00 ng/ml



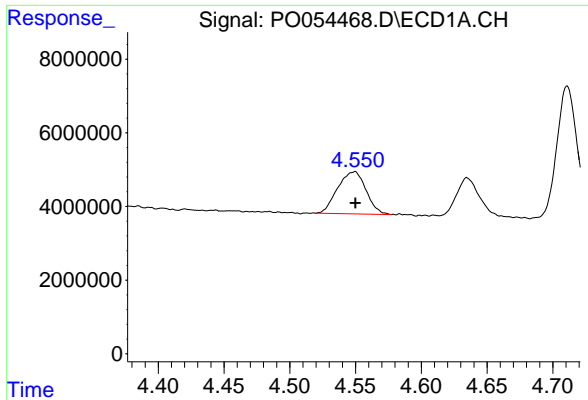
#2 Decachlorobiphenyl

R.T.: 9.980 min
 Delta R.T.: 0.000 min
 Response: 33664363
 Conc: 50.00 ng/ml



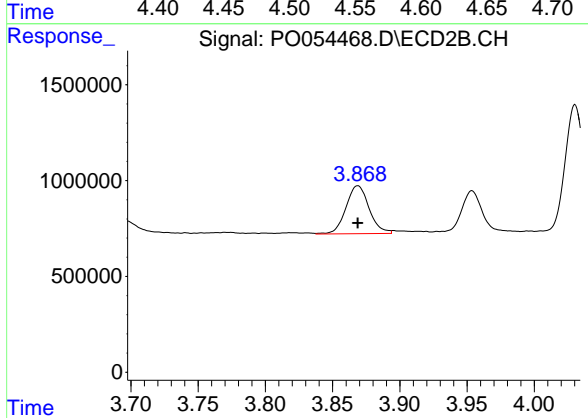
#2 Decachlorobiphenyl

R.T.: 8.654 min
 Delta R.T.: 0.000 min
 Response: 19433085
 Conc: 50.00 ng/ml

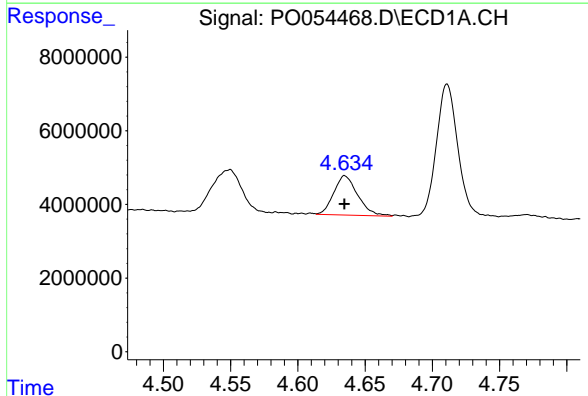


#8 AR-1221-1
R.T.: 4.550 min
Delta R.T.: 0.000 min
Response: 17222668
Conc: 500.00 ng/ml

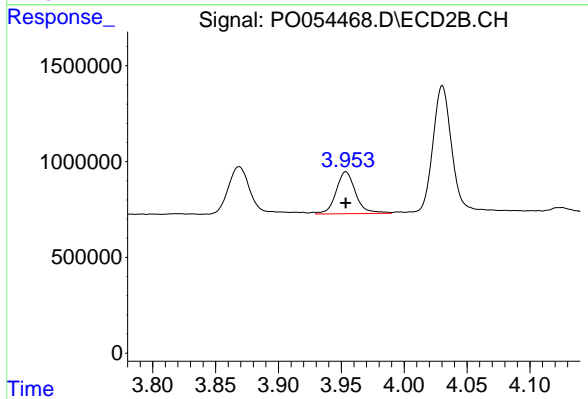
Instrument :
ECD_O
ClientSampled :
AR1221ICC500



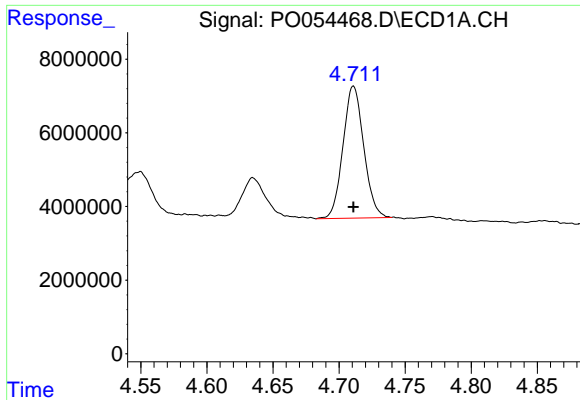
#8 AR-1221-1
R.T.: 3.869 min
Delta R.T.: 0.000 min
Response: 3011237
Conc: 500.00 ng/ml



#9 AR-1221-2
R.T.: 4.635 min
Delta R.T.: 0.000 min
Response: 13180247
Conc: 500.00 ng/ml



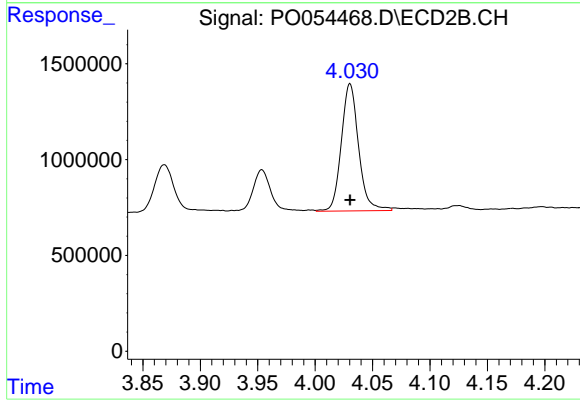
#9 AR-1221-2
R.T.: 3.954 min
Delta R.T.: 0.000 min
Response: 2378573
Conc: 500.00 ng/ml



#10 AR-1221-3

R.T.: 4.711 min
Delta R.T.: 0.000 min
Response: 39141835
Conc: 500.00 ng/ml

Instrument :
ECD_O
ClientSampled :
AR1221ICC500



#10 AR-1221-3

R.T.: 4.030 min
Delta R.T.: 0.000 min
Response: 6971347
Conc: 500.00 ng/ml