

Data Path : P:\HPCHEM1\ECD O\Data\PO032018\
 Data File : PO043204.D
 Signal(s) : Signal #1: ECD1A.CH Signal #2: ECD2B.CH
 Acq On : 20 Mar 2018 18:31
 Operator : SM/UA
 Sample : AR1660CCC500
 Misc :
 ALS Vial : 3 Sample Multiplier: 1

Instrument :
 ECD_O
ClientSampleId :
 AR1660CCC500

Manual Integrations
APPROVED
 ugo
 3/22/2018 2:24:52 PM

Integration File signal 1: autoint1.e
 Integration File signal 2: autoint2.e
 Quant Time: Mar 21 05:17:56 2018
 Quant Method : P:\HPCHEM1\ECD_O\methods\PO022118.M
 Quant Title : GC EXTRACTABLES
 QLast Update : Mon Feb 26 14:24:10 2018
 Response via : Initial Calibration
 Integrator: ChemStation 6890 Scale Mode: Small noise peaks clipped

Volume Inj. : 2 µl
 Signal #1 Phase : ZB-MR1 Signal #2 Phase: ZB-MR2
 Signal #1 Info : 30Mx0.32mmx 0.50µ Signal #2 Info : 30M x 0.32mm x 0.25µm

Compound	RT#1	RT#2	Resp#1	Resp#2	nq/ml	nq/ml

System Monitoring Compounds						
1) SA Tetrachlo...	4.081	3.334	13394671	18914171	54.072	51.184
2) SA Decachlor...	9.442	8.107	14211848	21677332	56.233	56.214
Target Compounds						
3) L1 AR-1016-1	4.946	4.152	3321104	4573426	494.520	483.148
4) L1 AR-1016-2	5.286	4.587	4625641	4309779	516.542	525.965m
5) L1 AR-1016-3	5.381	4.625	3691329	5206920	510.900	501.176m
6) L1 AR-1016-4	5.802	4.790	3772092	5571158	530.938	501.674m
7) L1 AR-1016-5	6.031	5.125	3095462	5622158	429.995m	531.878m
31) L7 AR-1260-1	6.763	5.780	7615754	12771279	553.571	529.002
32) L7 AR-1260-2	7.013	5.967	10057790	18204766	549.855m	541.937
33) L7 AR-1260-3	7.289	6.111	11225416	15223642	540.242m	534.787
34) L7 AR-1260-4	7.366	6.317	8220687	17139020	555.410	501.327
35) L7 AR-1260-5	7.888	6.812	17571234	36826762	519.799	544.169

(f)=RT Delta > 1/2 Window (#)=Amounts differ by > 25% (m)=manual int.

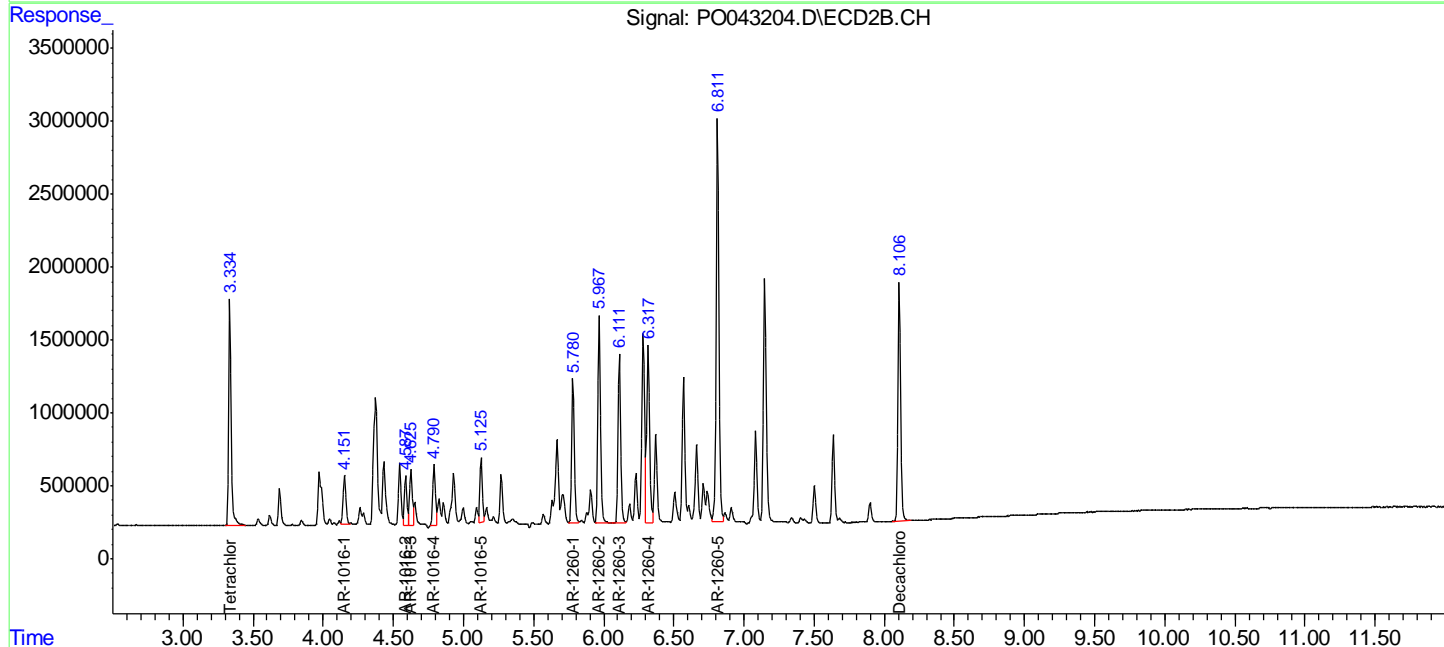
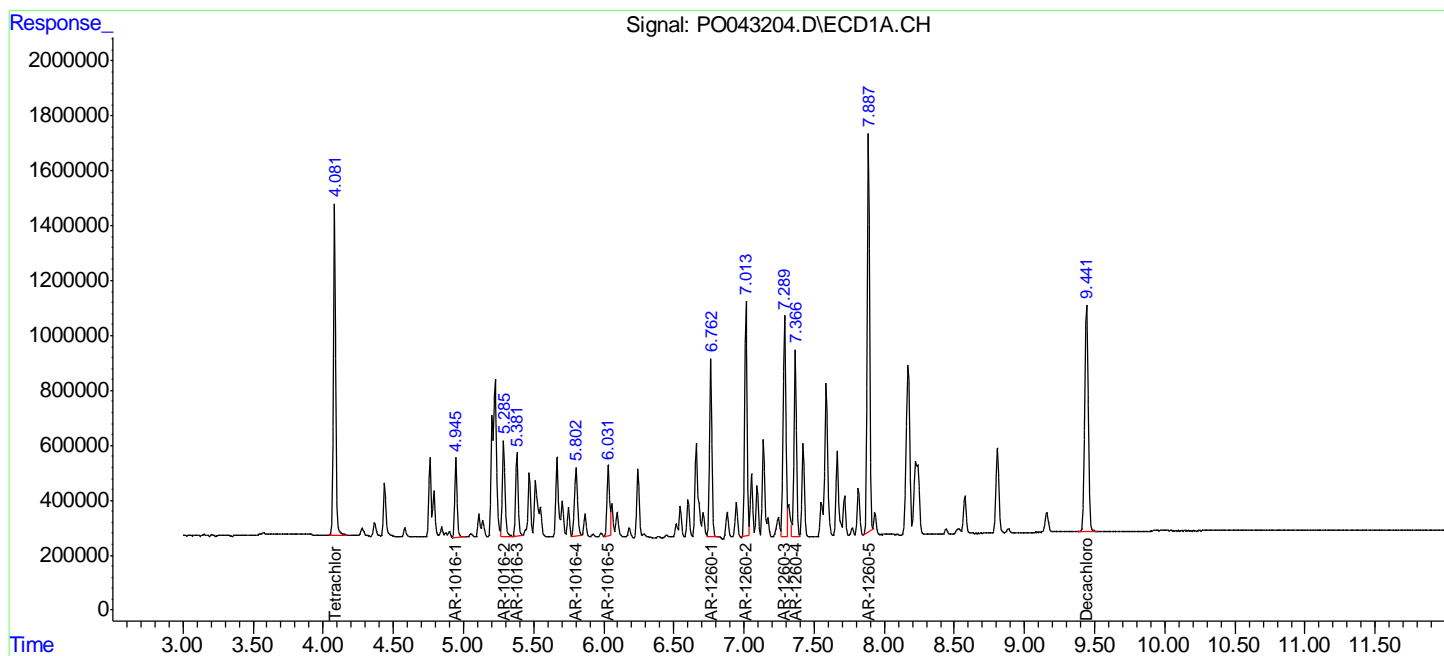
Data Path : P:\HPCHEM1\ECD O\Data\PO032018\
 Data File : PO043204.D
 Signal(s) : Signal #1: ECD1A.CH Signal #2: ECD2B.CH
 Acq On : 20 Mar 2018 18:31
 Operator : SM/UA
 Sample : AR1660CCC500
 Misc :
 ALS Vial : 3 Sample Multiplier: 1

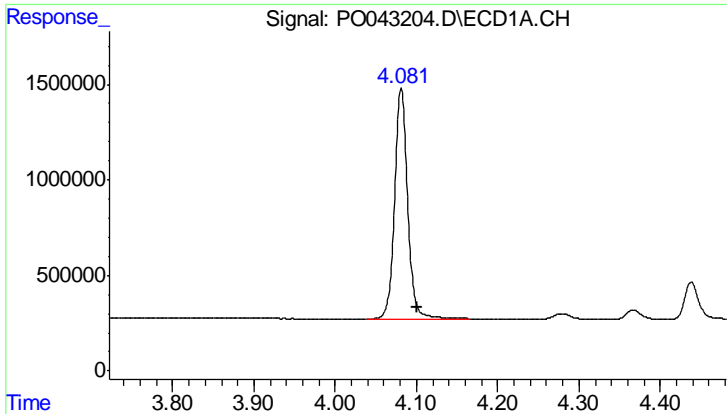
Instrument :
 ECD_O
 Client Sampled :
 AR1660CCC500

Manual Integrations
APPROVED
 ugo
 3/22/2018 2:24:52 PM

Integration File signal 1: autoint1.e
 Integration File signal 2: autoint2.e
 Quant Time: Mar 21 05:17:56 2018
 Quant Method : P:\HPCHEM1\ECD_O\methods\PO022118.M
 Quant Title : GC EXTRACTABLES
 QLast Update : Mon Feb 26 14:24:10 2018
 Response via : Initial Calibration
 Integrator: ChemStation 6890 Scale Mode: Small noise peaks clipped

Volume Inj. : 2 µl
 Signal #1 Phase : ZB-MR1 Signal #2 Phase: ZB-MR2
 Signal #1 Info : 30Mx0.32mmx 0.50µ Signal #2 Info : 30M x 0.32mm x 0.25µm



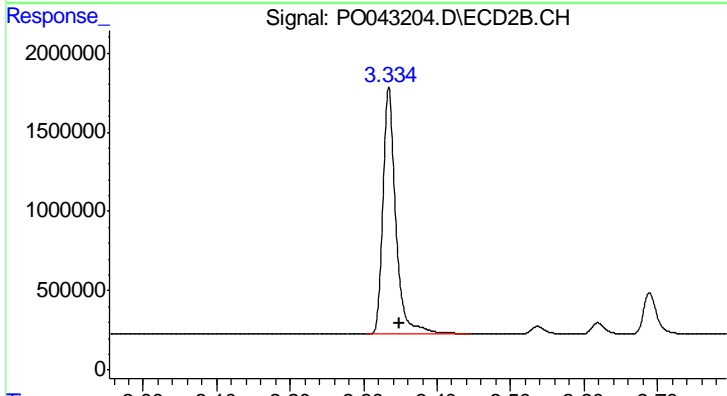


#1 Tetrachloro-m-xylene

R.T.: 4.081 min
 Delta R.T.: -0.020 min
 Response: 13394671
 Conc: 54.07 ng/ml

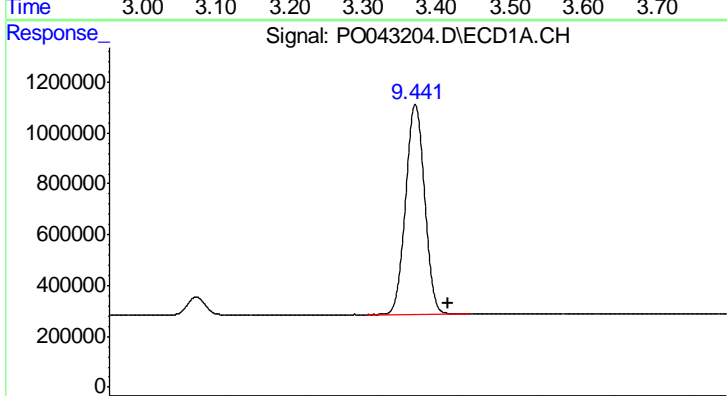
Instrument :
 ECD_O
 ClientSampleId :
 AR1660CCC500

Manual Integrations
 APPROVED
 ugo
 3/22/2018 2:24:52 PM



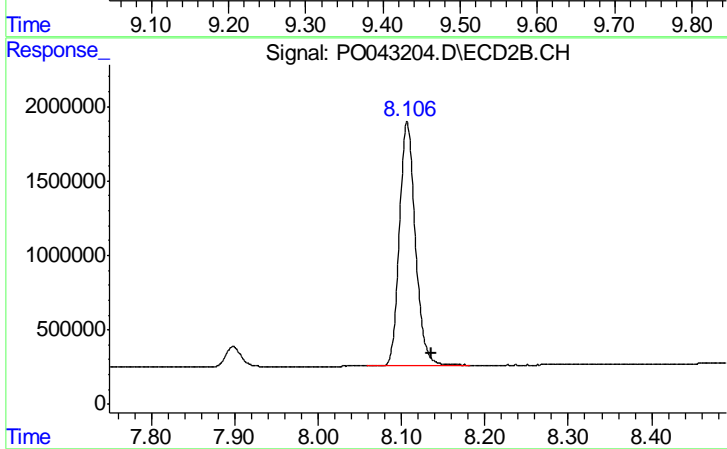
#1 Tetrachloro-m-xylene

R.T.: 3.334 min
 Delta R.T.: -0.014 min
 Response: 18914171
 Conc: 51.18 ng/ml



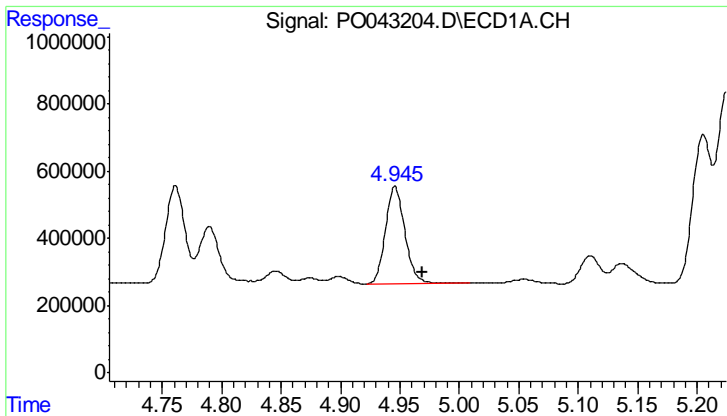
#2 Decachlorobiphenyl

R.T.: 9.442 min
 Delta R.T.: -0.042 min
 Response: 14211848
 Conc: 56.23 ng/ml



#2 Decachlorobiphenyl

R.T.: 8.107 min
 Delta R.T.: -0.030 min
 Response: 21677332
 Conc: 56.21 ng/ml



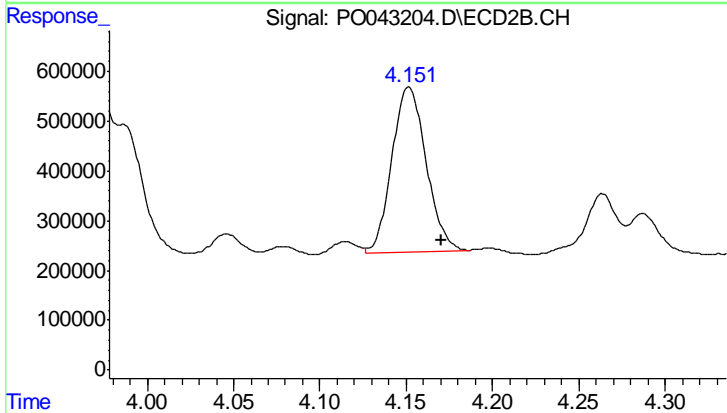
#3 AR-1016-1

R.T.: 4.946 min
 Delta R.T.: -0.023 min
 Response: 3321104
 Conc: 494.52 ng/ml

Instrument :
 ECD_O
 ClientSampled :
 AR1660CCC500

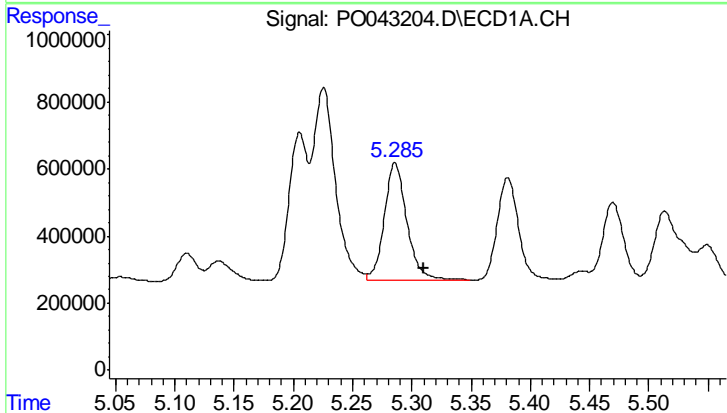
Manual Integrations
 APPROVED

ugo
 3/22/2018 2:24:52 PM



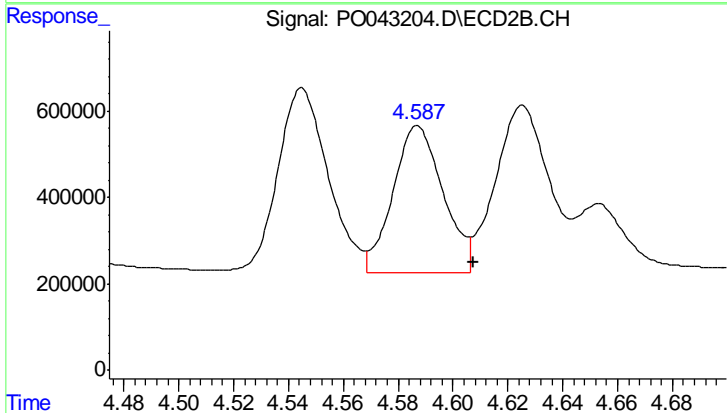
#3 AR-1016-1

R.T.: 4.152 min
 Delta R.T.: -0.019 min
 Response: 4573426
 Conc: 483.15 ng/ml



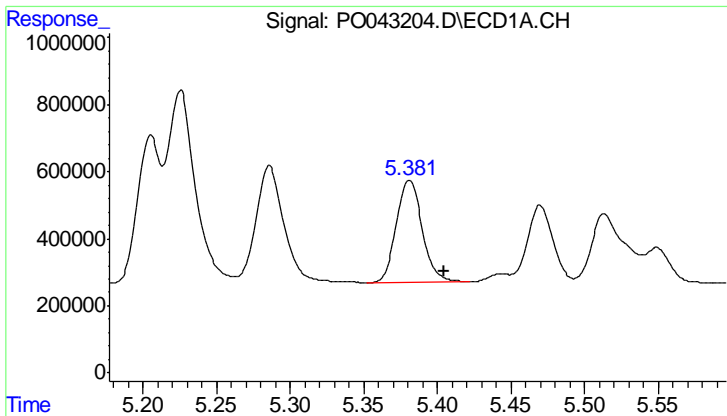
#4 AR-1016-2

R.T.: 5.286 min
 Delta R.T.: -0.024 min
 Response: 4625641
 Conc: 516.54 ng/ml



#4 AR-1016-2

R.T.: 4.587 min
 Delta R.T.: -0.021 min
 Response: 4309779
 Conc: 525.97 ng/ml m



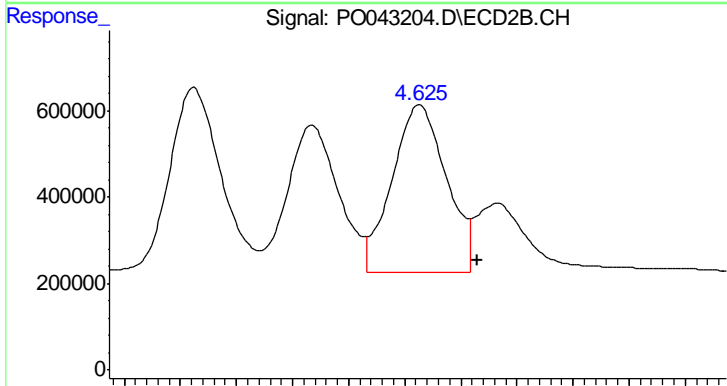
#5 AR-1016-3

R.T.: 5.381 min
 Delta R.T.: -0.024 min
 Response: 3691329
 Conc: 510.90 ng/ml

Instrument :
 ECD_O
 ClientSampled :
 AR1660CCC500

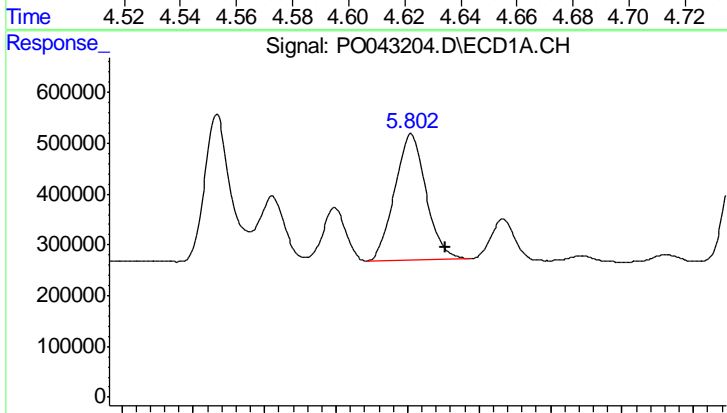
Manual Integrations
 APPROVED

ugo
 3/22/2018 2:24:52 PM



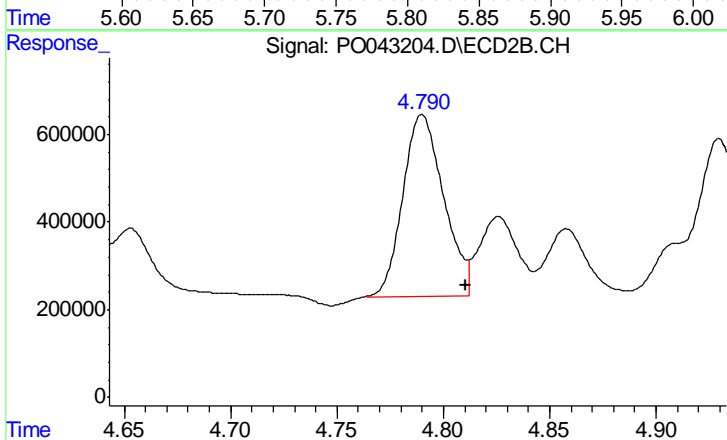
#5 AR-1016-3

R.T.: 4.625 min
 Delta R.T.: -0.021 min
 Response: 5206920
 Conc: 501.18 ng/ml m



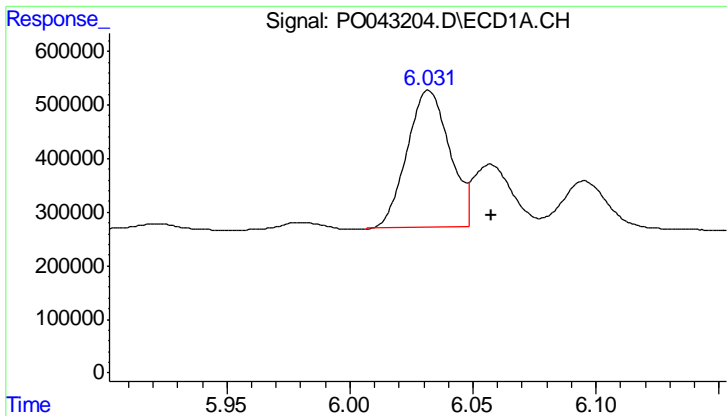
#6 AR-1016-4

R.T.: 5.802 min
 Delta R.T.: -0.025 min
 Response: 3772092
 Conc: 530.94 ng/ml



#6 AR-1016-4

R.T.: 4.790 min
 Delta R.T.: -0.021 min
 Response: 5571158
 Conc: 501.67 ng/ml m



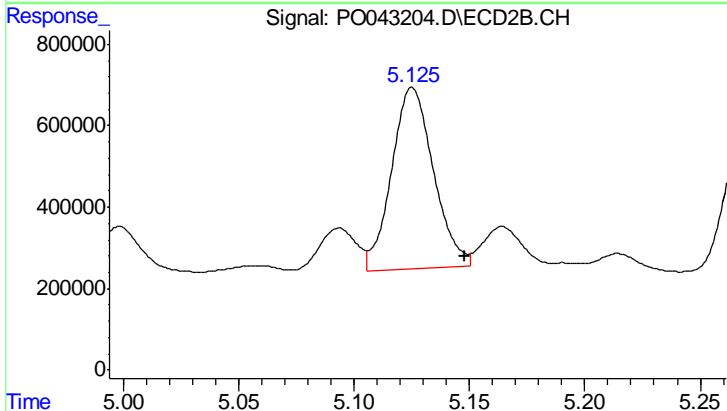
#7 AR-1016-5

R.T.: 6.031 min
 Delta R.T.: -0.026 min
 Response: 3095462
 Conc: 430.00 ng/ml

Instrument :
 ECD_O
 ClientSampled :
 AR1660CCC500

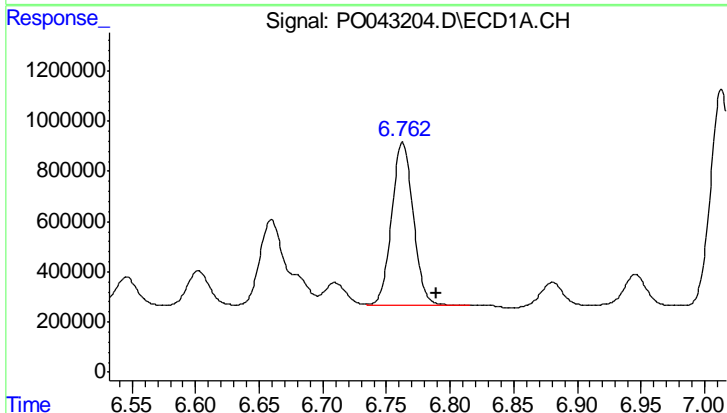
Manual Integrations
 APPROVED

ugo
 3/22/2018 2:24:52 PM



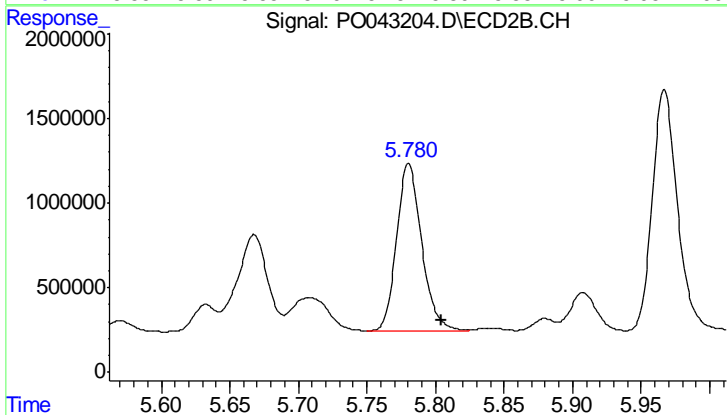
#7 AR-1016-5

R.T.: 5.125 min
 Delta R.T.: -0.023 min
 Response: 5622158
 Conc: 531.88 ng/ml m



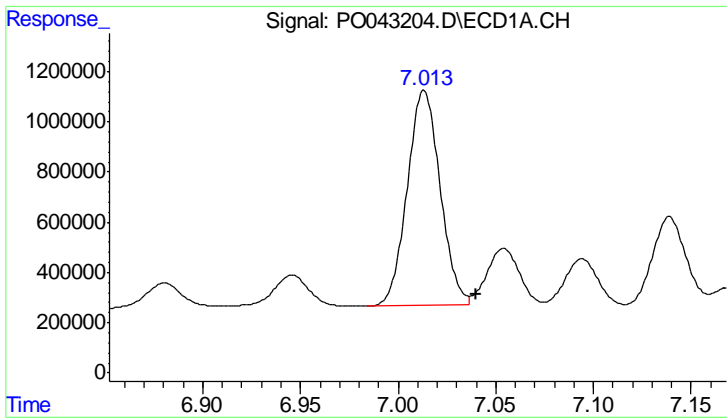
#31 AR-1260-1

R.T.: 6.763 min
 Delta R.T.: -0.026 min
 Response: 7615754
 Conc: 553.57 ng/ml



#31 AR-1260-1

R.T.: 5.780 min
 Delta R.T.: -0.024 min
 Response: 12771279
 Conc: 529.00 ng/ml



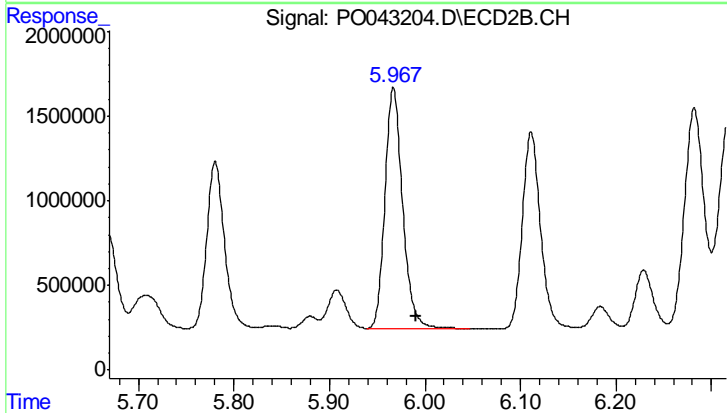
#32 AR-1260-2

R.T.: 7.013 min
 Delta R.T.: -0.027 min
 Response: 10057790
 Conc: 549.86 ng/ml

Instrument :
 ECD_O
 ClientSampleId :
 AR1660CCC500

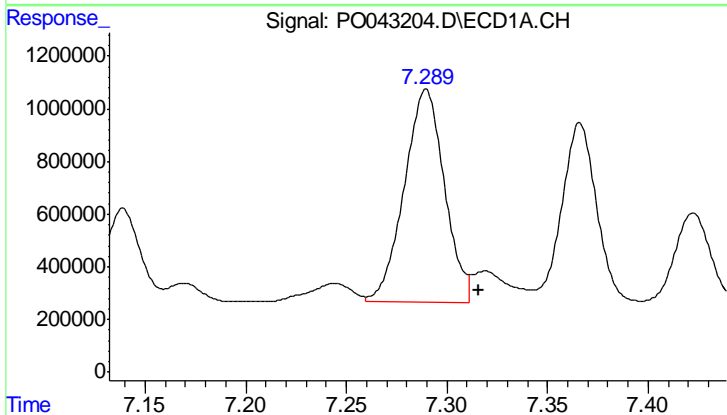
Manual Integrations
 APPROVED

ugo
 3/22/2018 2:24:52 PM



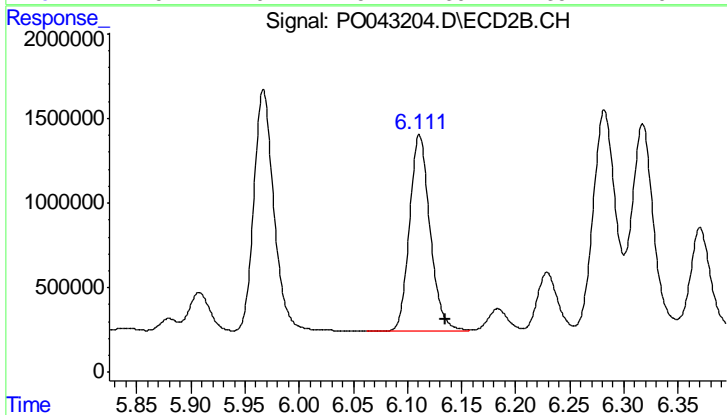
#32 AR-1260-2

R.T.: 5.967 min
 Delta R.T.: -0.024 min
 Response: 18204766
 Conc: 541.94 ng/ml



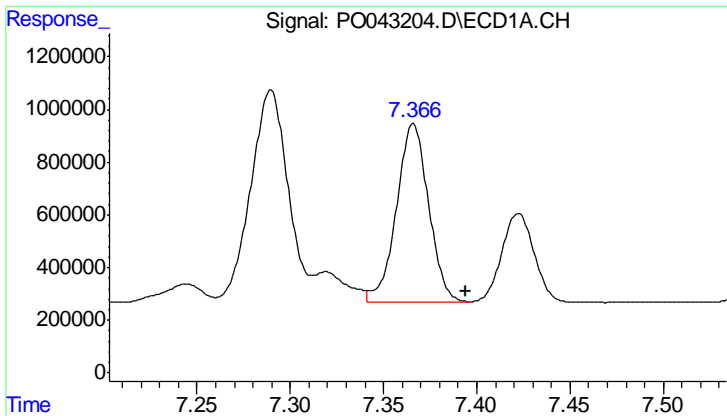
#33 AR-1260-3

R.T.: 7.289 min
 Delta R.T.: -0.026 min
 Response: 11225416
 Conc: 540.24 ng/ml m



#33 AR-1260-3

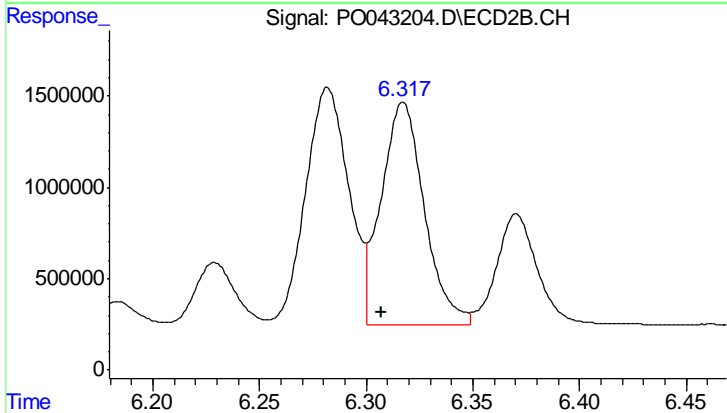
R.T.: 6.111 min
 Delta R.T.: -0.024 min
 Response: 15223642
 Conc: 534.79 ng/ml



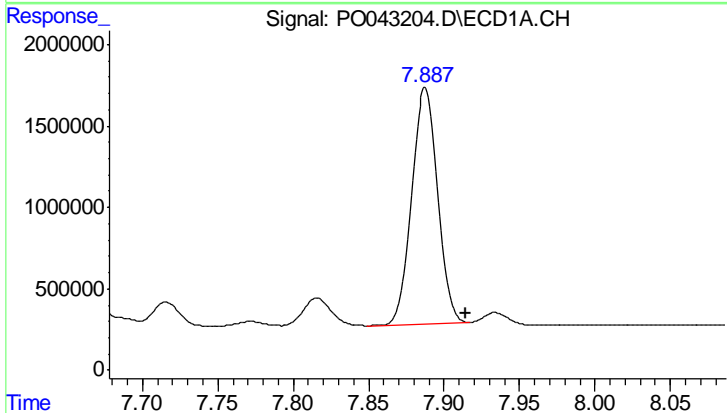
#34 AR-1260-4
 R.T.: 7.366 min
 Delta R.T.: -0.028 min
 Response: 8220687
 Conc: 555.41 ng/ml

Instrument :
 ECD_O
ClientSampled :
 AR1660CCC500

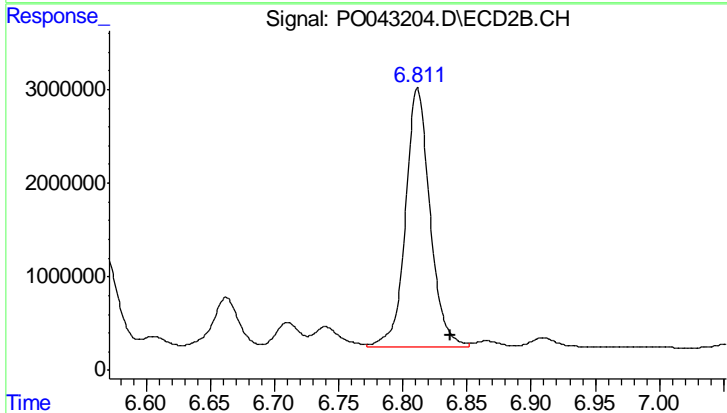
Manual Integrations
APPROVED
 ugo
 3/22/2018 2:24:52 PM



#34 AR-1260-4
 R.T.: 6.317 min
 Delta R.T.: 0.010 min
 Response: 17139020
 Conc: 501.33 ng/ml



#35 AR-1260-5
 R.T.: 7.888 min
 Delta R.T.: -0.027 min
 Response: 17571234
 Conc: 519.80 ng/ml



#35 AR-1260-5
 R.T.: 6.812 min
 Delta R.T.: -0.025 min
 Response: 36826762
 Conc: 544.17 ng/ml