

Data Path : P:\HPCHEM1\ECD_O\Data\PO032218\
 Data File : PO043234.D
 Signal(s) : Signal #1: ECD1A.CH Signal #2: ECD2B.CH
 Acq On : 22 Mar 2018 13:51
 Operator : SM/UA
 Sample : J1946-04RE
 Misc :
 ALS Vial : 17 Sample Multiplier: 1

Instrument :
 ECD_O
 ClientSampleId :
 MW-104(4-5)RE

Integration File signal 1: autoint1.e
 Integration File signal 2: autoint2.e
 Quant Time: Mar 22 14:04:01 2018
 Quant Method : P:\HPCHEM1\ECD_O\methods\PO022118.M
 Quant Title : GC EXTRACTABLES
 QLast Update : Mon Feb 26 14:24:10 2018
 Response via : Initial Calibration
 Integrator: ChemStation 6890 Scale Mode: Small noise peaks clipped

Volume Inj. : 2 µl
 Signal #1 Phase : ZB-MR1 Signal #2 Phase: ZB-MR2
 Signal #1 Info : 30Mx0.32mmx 0.50µ Signal #2 Info : 30M x 0.32mm x 0.25µm

Compound	RT#1	RT#2	Resp#1	Resp#2	ng/ml	ng/ml

System Monitoring Compounds						
1) SA Tetrachlo...	4.085	3.333	9020108	12858466	36.413	34.797
2) SA Decachlor...	9.448	8.108	6535621	7981135	25.860	20.697
Target Compounds						
3) L1 AR-1016-1	5.020	4.157	1042691	297118	155.259	31.388 #
4) L1 AR-1016-2	0.000	4.590	0	1498426	N.D.	182.868 #
5) L1 AR-1016-3	0.000	4.644	0	2046251	N.D.	196.956 #
6) L1 AR-1016-4	0.000	4.805	0	2605971	N.D.	234.663 #
7) L1 AR-1016-5	6.036	5.148	7649023	15781894	1062.537	1493.028 #
12) L3 AR-1232-2	5.212	0.000	508662	0	193.282	N.D. #
13) L3 AR-1232-3	5.212	4.491	508662	1168804	113.893	283.440 #
14) L3 AR-1232-4	0.000	4.590	0	1498426	N.D.	483.599 #
15) L3 AR-1232-5	0.000	4.644	0	2046251	N.D.	946.456 #
16) L4 AR-1242-1	0.000	3.999	0	4039145	N.D.	1591.622 #
17) L4 AR-1242-2	5.212	0.000	508662	0	69.154	N.D. #
18) L4 AR-1242-3	0.000	4.590	0	1498426	N.D.	284.859 #
19) L4 AR-1242-4	0.000	4.644	0	2046251	N.D.	390.871 #
20) L4 AR-1242-5	0.000	4.805	0	2605971	N.D.	450.696 #
21) L5 AR-1248-1	0.000	4.805	0	2605971	N.D.	238.380 #
22) L5 AR-1248-2	0.000	4.973	0	2949581	N.D.	303.343 #
23) L5 AR-1248-3	6.105	5.148	850669	15781894	93.026	930.510 #
24) L5 AR-1248-4	6.176	5.148	3525420	15781894	393.409	1168.818 #
25) L5 AR-1248-5	0.000	5.703	0	1317509	N.D.	170.984 #
26) L6 AR-1254-1	0.000	5.148	0	15781894	N.D.	853.268 #
27) L6 AR-1254-2	6.608	0.000	3219264	0	370.140	N.D. #
28) L6 AR-1254-3	6.608	5.703	3219264	1317509	207.706	47.888 #
29) L6 AR-1254-4	6.941	5.963	2516169	5380136	191.814	276.106 #
30) L6 AR-1254-5	7.143	6.282	1067463	1814913	113.396	137.020 #
31) L7 AR-1260-1	0.000	5.783	0	586957	N.D.	24.312 #
32) L7 AR-1260-2	7.055	5.963	624325	5380136	34.132	160.161 #
33) L7 AR-1260-3	0.000	6.148	0	1301904	N.D.	45.734 #
34) L7 AR-1260-4	0.000	6.282	0	1814913	N.D.	53.087 #
35) L7 AR-1260-5	0.000	6.812	0	921781	N.D.	13.621 #
36) L8 AR-1262-1	0.000	5.963	0	5380136	N.D.	242.233 #
37) L8 AR-1262-2	7.055	6.148	624325	1301904	53.623	64.738 #
38) L8 AR-1262-3	0.000	6.377	0	205546	N.D.	5.546 #
40) L8 AR-1262-5	0.000	6.812	0	921781	N.D.	14.549 #
41) L9 AR-1268-1	0.000	7.113	0	46668925	N.D.	636.775 #
44) L9 AR-1268-4	8.813	0.000	1575619	0	126.411	N.D. #

Data Path : P:\HPCHEM1\ECD_O\Data\PO032218\
Data File : PO043234.D
Signal(s) : Signal #1: ECD1A.CH Signal #2: ECD2B.CH
Acq On : 22 Mar 2018 13:51
Operator : SM/UA
Sample : J1946-04RE
Misc :
ALS Vial : 17 Sample Multiplier: 1

Instrument :
ECD_O
ClientSampleId :
MW-104(4-5)RE

Integration File signal 1: autoint1.e
Integration File signal 2: autoint2.e
Quant Time: Mar 22 14:04:01 2018
Quant Method : P:\HPCHEM1\ECD_O\methods\PO022118.M
Quant Title : GC EXTRACTABLES
QLast Update : Mon Feb 26 14:24:10 2018
Response via : Initial Calibration
Integrator: ChemStation 6890 Scale Mode: Small noise peaks clipped

Volume Inj. : 2 µl
Signal #1 Phase : ZB-MR1 Signal #2 Phase: ZB-MR2
Signal #1 Info : 30Mx0.32mmx 0.50µ Signal #2 Info : 30M x 0.32mm x 0.25µm

Compound	RT#1	RT#2	Resp#1	Resp#2	ng/ml	ng/ml
----------	------	------	--------	--------	-------	-------

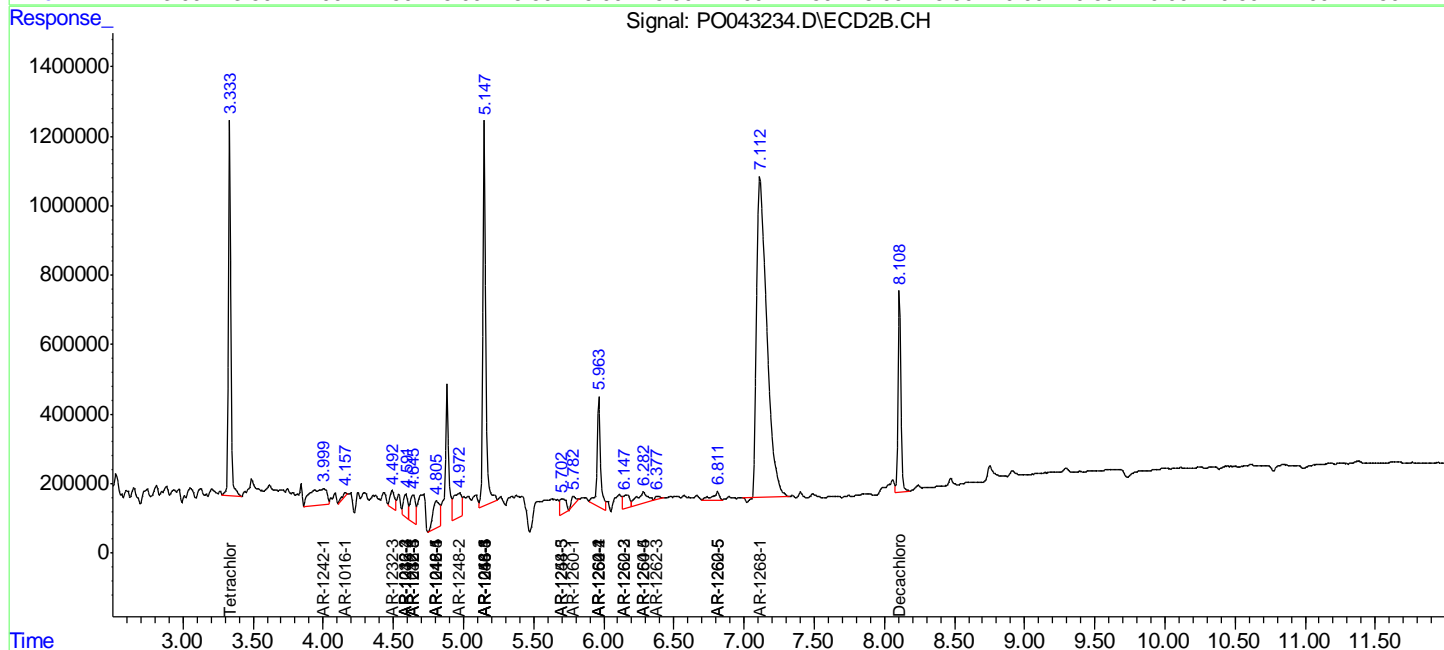
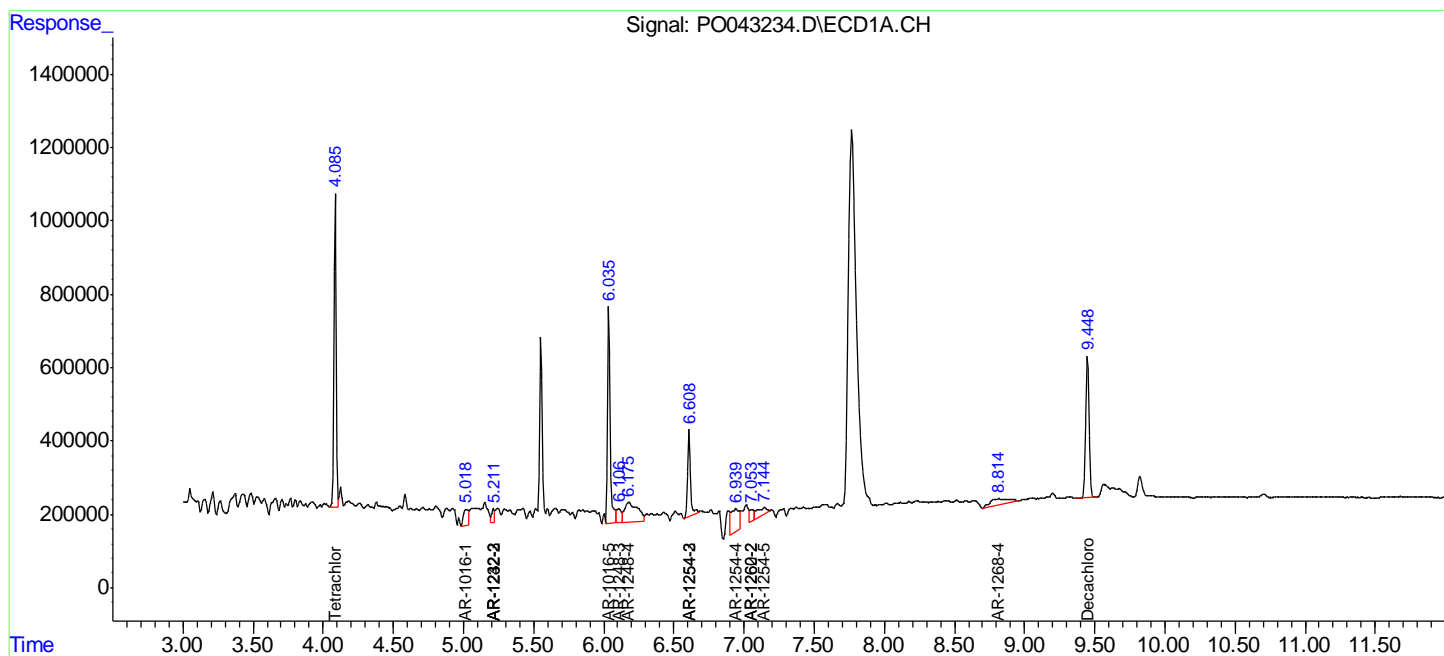
(f)=RT Delta > 1/2 Window (#)=Amounts differ by > 25% (m)=manual int.

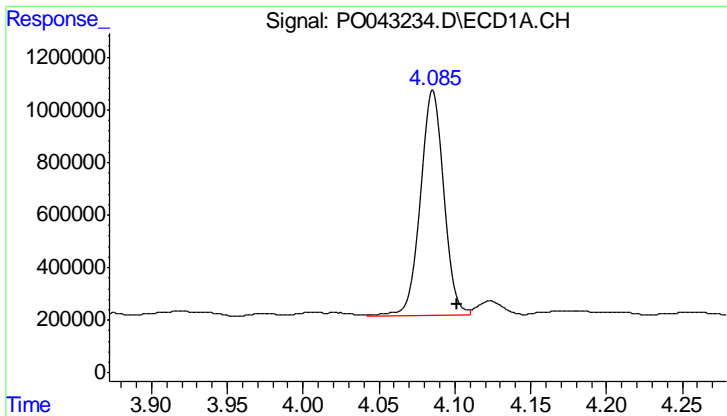
Data Path : P:\HPCHEM1\ECD_O\Data\PO032218\
 Data File : PO043234.D
 Signal(s) : Signal #1: ECD1A.CH Signal #2: ECD2B.CH
 Acq On : 22 Mar 2018 13:51
 Operator : SM/UA
 Sample : J1946-04RE
 Misc :
 ALS Vial : 17 Sample Multiplier: 1

Instrument :
 ECD_O
 Client Sampled :
 MW-104(4-5)RE

Integration File signal 1: autoint1.e
 Integration File signal 2: autoint2.e
 Quant Time: Mar 22 14:04:01 2018
 Quant Method : P:\HPCHEM1\ECD_O\methods\PO022118.M
 Quant Title : GC EXTRACTABLES
 QLast Update : Mon Feb 26 14:24:10 2018
 Response via : Initial Calibration
 Integrator: ChemStation 6890 Scale Mode: Small noise peaks clipped

Volume Inj. : 2 µl
 Signal #1 Phase : ZB-MR1 Signal #2 Phase: ZB-MR2
 Signal #1 Info : 30Mx0.32mmx 0.50µ Signal #2 Info : 30M x 0.32mm x 0.25µm

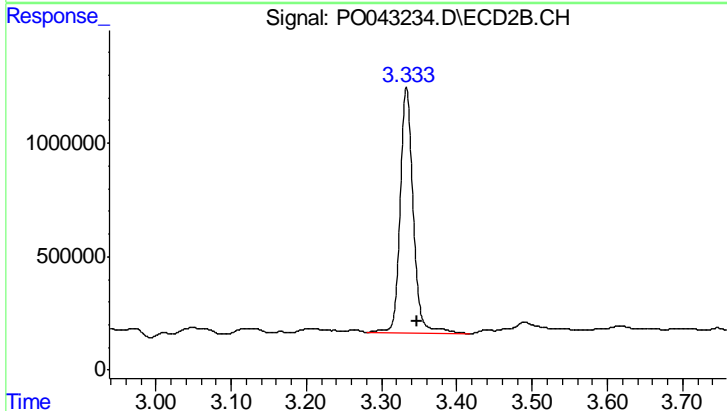




#1 Tetrachloro-m-xylene

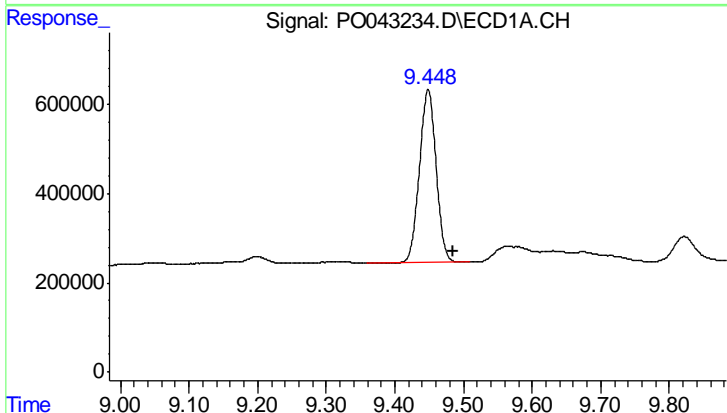
R.T.: 4.085 min
 Delta R.T.: -0.016 min
 Response: 9020108
 Conc: 36.41 ng/ml

Instrument :
 ECD_O
 ClientSampleId :
 MW-104(4-5)RE



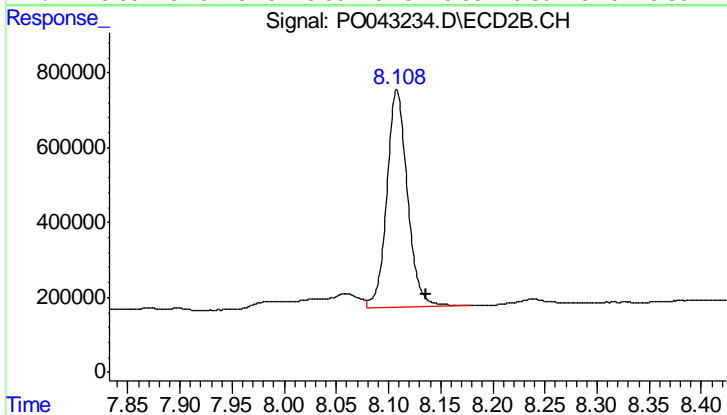
#1 Tetrachloro-m-xylene

R.T.: 3.333 min
 Delta R.T.: -0.015 min
 Response: 12858466
 Conc: 34.80 ng/ml



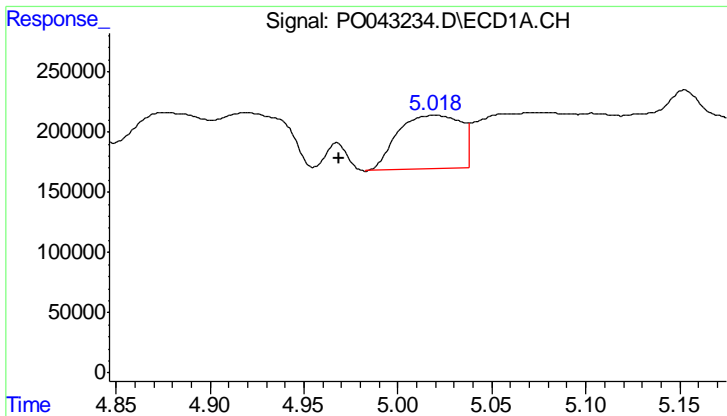
#2 Decachlorobiphenyl

R.T.: 9.448 min
 Delta R.T.: -0.036 min
 Response: 6535621
 Conc: 25.86 ng/ml



#2 Decachlorobiphenyl

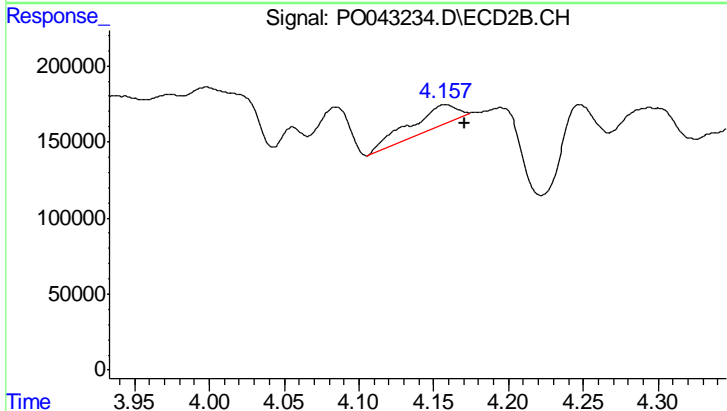
R.T.: 8.108 min
 Delta R.T.: -0.028 min
 Response: 7981135
 Conc: 20.70 ng/ml



#3 AR-1016-1

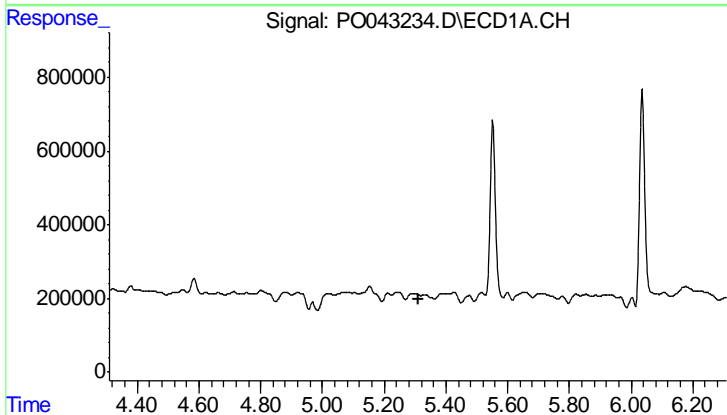
R.T.: 5.020 min
 Delta R.T.: 0.051 min
 Response: 1042691
 Conc: 155.26 ng/ml

Instrument :
 ECD_O
 ClientSampleId :
 MW-104(4-5)RE



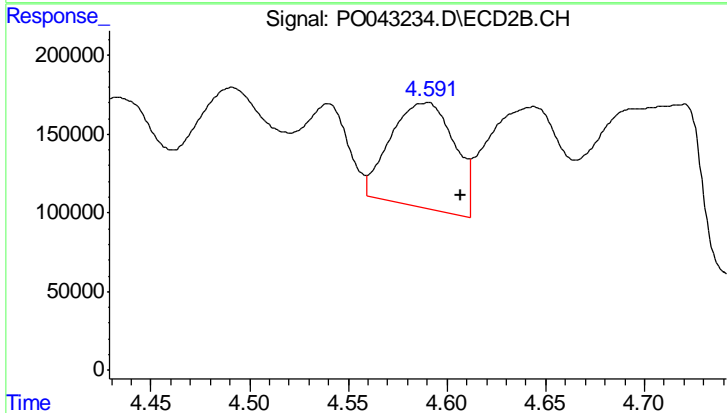
#3 AR-1016-1

R.T.: 4.157 min
 Delta R.T.: -0.013 min
 Response: 297118
 Conc: 31.39 ng/ml



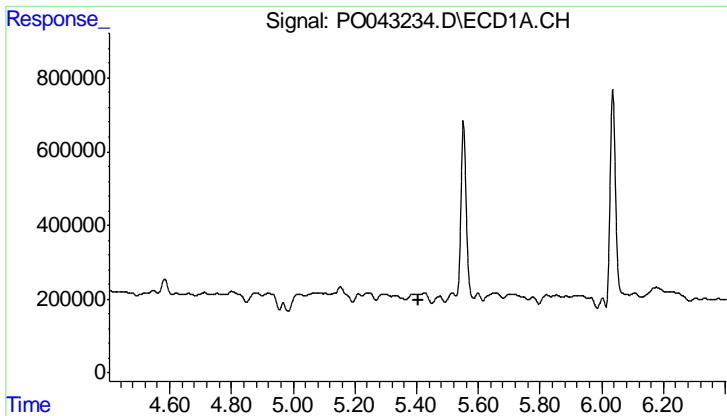
#4 AR-1016-2

R.T.: 0.000 min
 Exp R.T. : 5.310 min
 Response: 0
 Conc: N.D.



#4 AR-1016-2

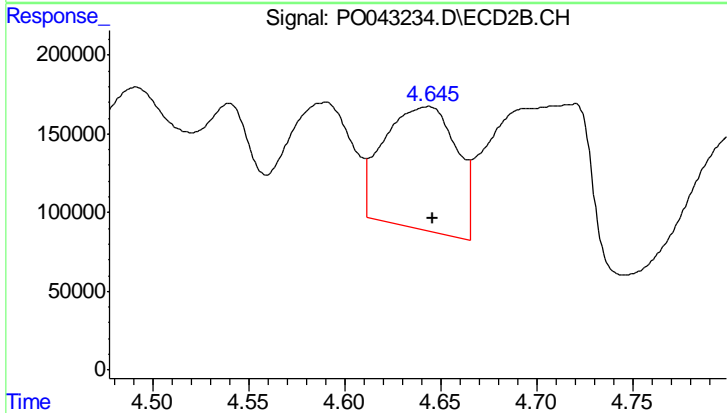
R.T.: 4.590 min
 Delta R.T.: -0.017 min
 Response: 1498426
 Conc: 182.87 ng/ml



#5 AR-1016-3

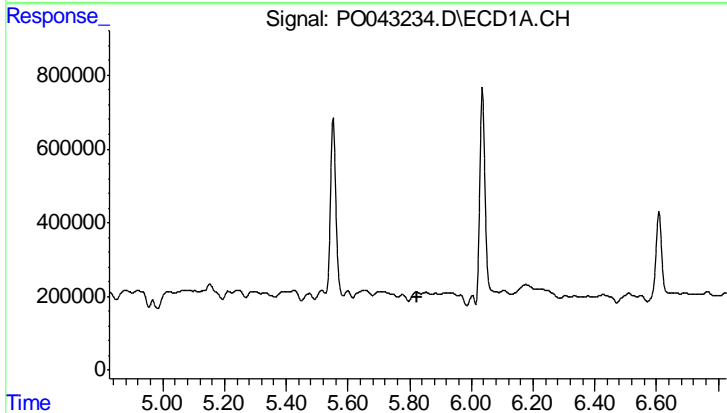
R.T.: 0.000 min
 Exp R.T.: 5.405 min
 Response: 0
 Conc: N.D.

Instrument :
 ECD_O
 ClientSampleId :
 MW-104(4-5)RE



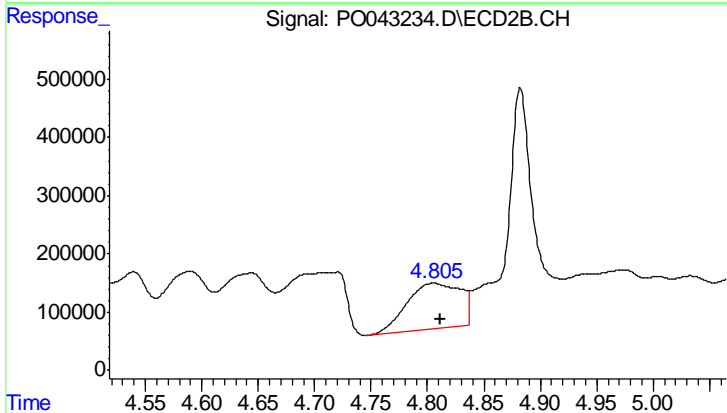
#5 AR-1016-3

R.T.: 4.644 min
 Delta R.T.: -0.002 min
 Response: 2046251
 Conc: 196.96 ng/ml



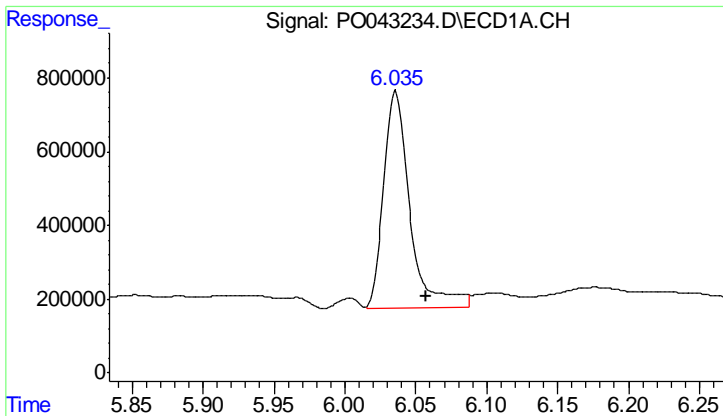
#6 AR-1016-4

R.T.: 0.000 min
 Exp R.T.: 5.827 min
 Response: 0
 Conc: N.D.



#6 AR-1016-4

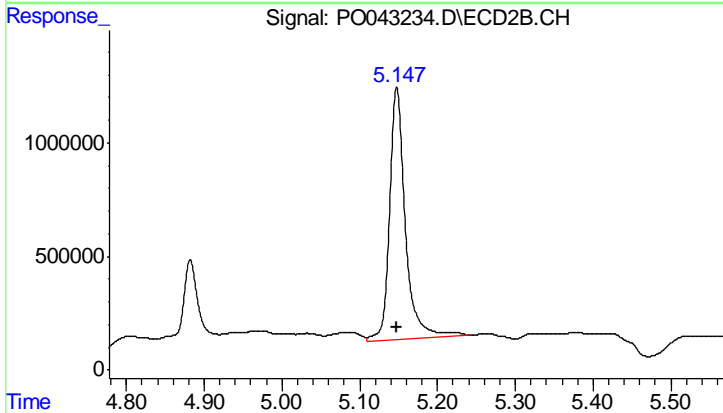
R.T.: 4.805 min
 Delta R.T.: -0.006 min
 Response: 2605971
 Conc: 234.66 ng/ml



#7 AR-1016-5

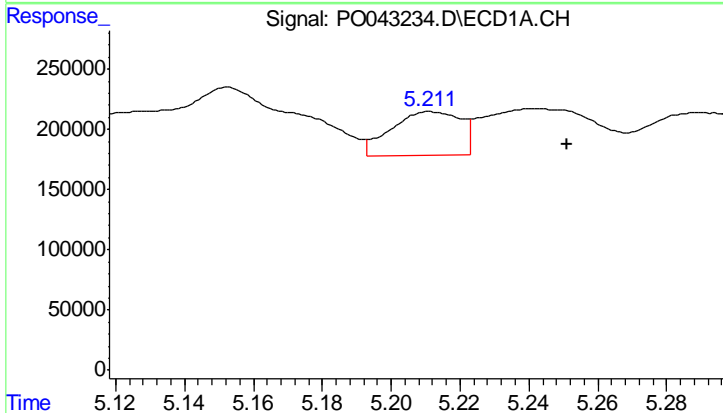
R.T.: 6.036 min
 Delta R.T.: -0.022 min
 Response: 7649023
 Conc: 1062.54 ng/ml

Instrument :
 ECD_O
 ClientSampled :
 MW-104(4-5)RE



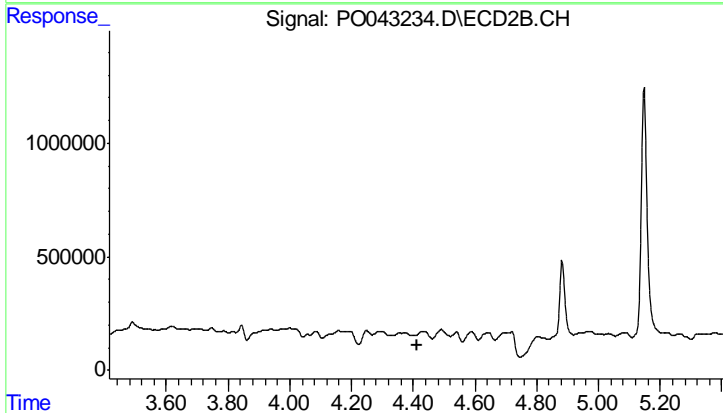
#7 AR-1016-5

R.T.: 5.148 min
 Delta R.T.: 0.000 min
 Response: 15781894
 Conc: 1493.03 ng/ml



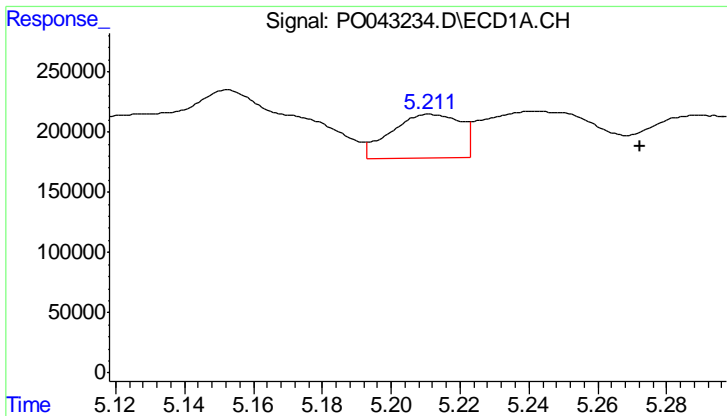
#12 AR-1232-2

R.T.: 5.212 min
 Delta R.T.: -0.039 min
 Response: 508662
 Conc: 193.28 ng/ml



#12 AR-1232-2

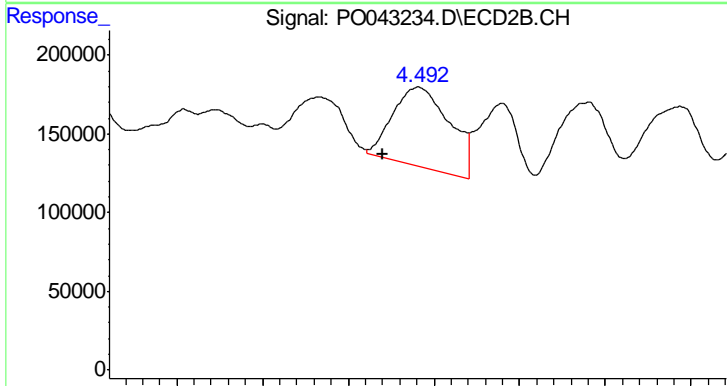
R.T.: 0.000 min
 Exp R.T. : 4.415 min
 Response: 0
 Conc: N.D.



#13 AR-1232-3

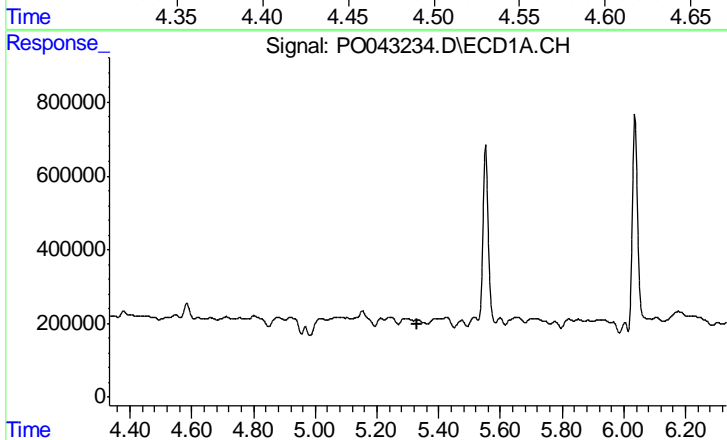
R.T.: 5.212 min
 Delta R.T.: -0.060 min
 Response: 508662
 Conc: 113.89 ng/ml

Instrument :
 ECD_O
 ClientSampleId :
 MW-104(4-5)RE



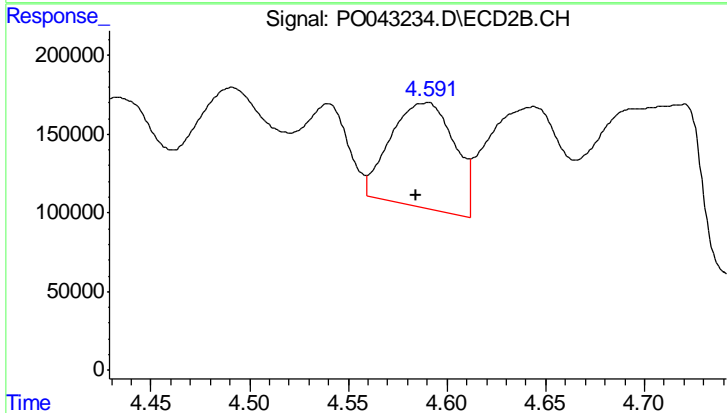
#13 AR-1232-3

R.T.: 4.491 min
 Delta R.T.: 0.021 min
 Response: 1168804
 Conc: 283.44 ng/ml



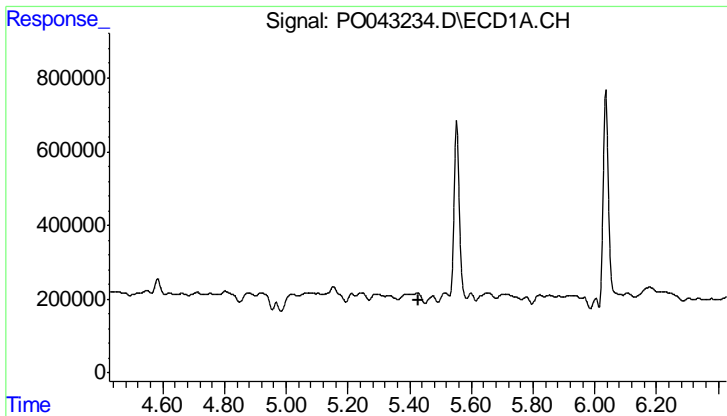
#14 AR-1232-4

R.T.: 0.000 min
 Exp R.T. : 5.333 min
 Response: 0
 Conc: N.D.



#14 AR-1232-4

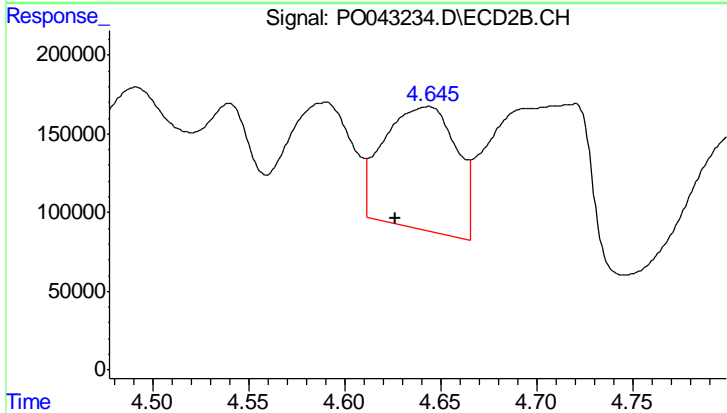
R.T.: 4.590 min
 Delta R.T.: 0.006 min
 Response: 1498426
 Conc: 483.60 ng/ml



#15 AR-1232-5

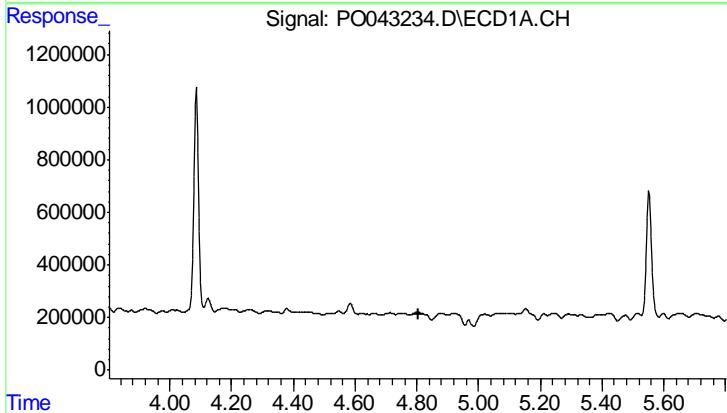
R.T.: 0.000 min
 Exp R.T.: 5.427 min
 Response: 0
 Conc: N.D.

Instrument :
 ECD_O
 ClientSampleId :
 MW-104(4-5)RE



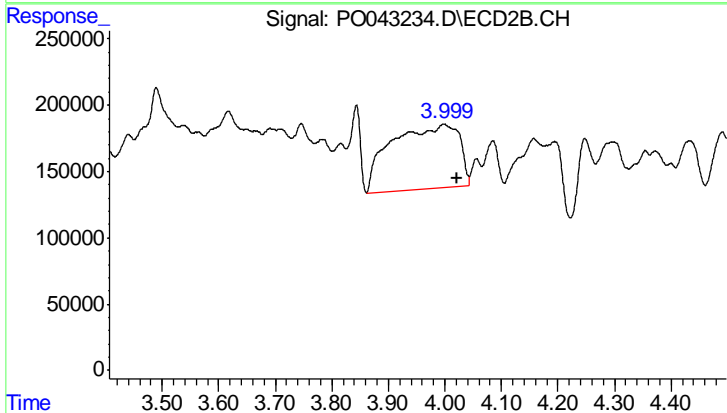
#15 AR-1232-5

R.T.: 4.644 min
 Delta R.T.: 0.017 min
 Response: 2046251
 Conc: 946.46 ng/ml



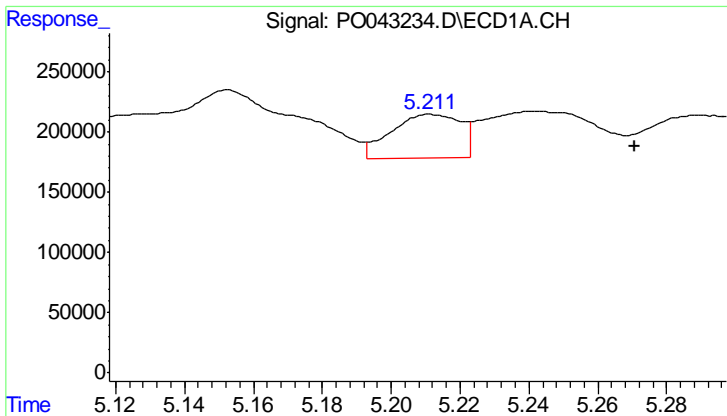
#16 AR-1242-1

R.T.: 0.000 min
 Exp R.T.: 4.804 min
 Response: 0
 Conc: N.D.



#16 AR-1242-1

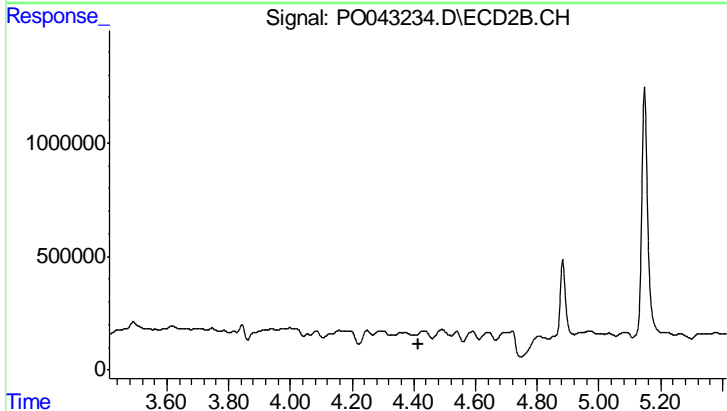
R.T.: 3.999 min
 Delta R.T.: -0.024 min
 Response: 4039145
 Conc: 1591.62 ng/ml



#17 AR-1242-2

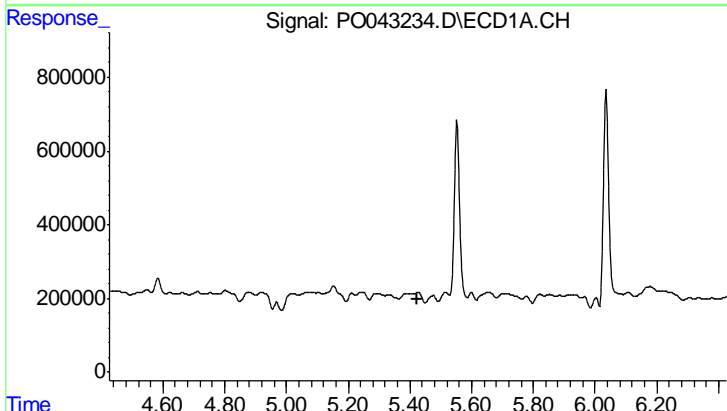
R.T.: 5.212 min
 Delta R.T.: -0.059 min
 Response: 508662
 Conc: 69.15 ng/ml

Instrument :
 ECD_O
 ClientSampled :
 MW-104(4-5)RE



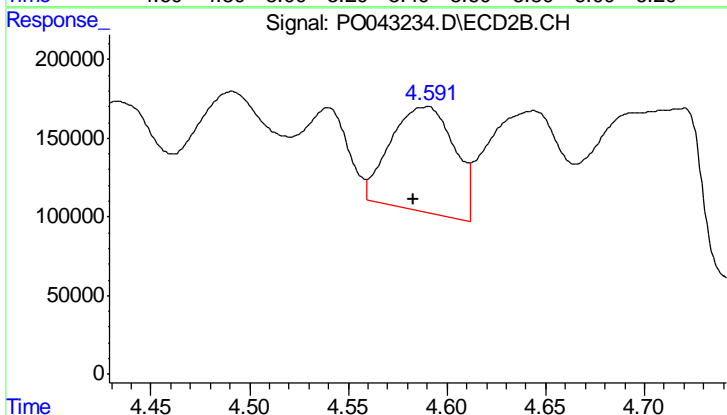
#17 AR-1242-2

R.T.: 0.000 min
 Exp R.T.: 4.414 min
 Response: 0
 Conc: N.D.



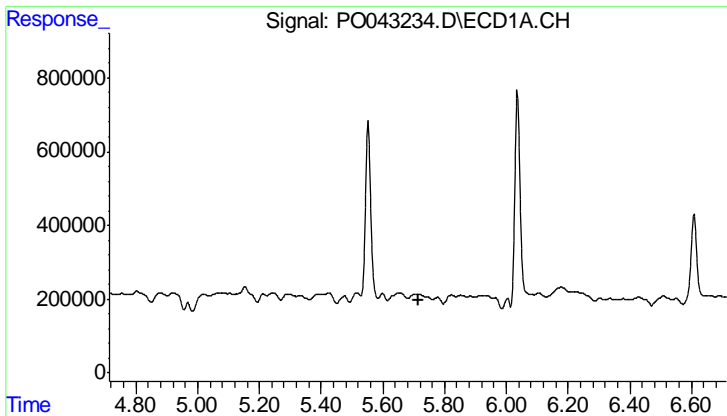
#18 AR-1242-3

R.T.: 0.000 min
 Exp R.T.: 5.426 min
 Response: 0
 Conc: N.D.



#18 AR-1242-3

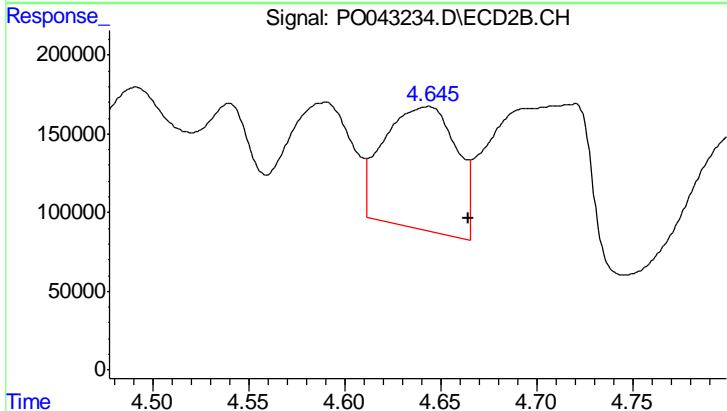
R.T.: 4.590 min
 Delta R.T.: 0.007 min
 Response: 1498426
 Conc: 284.86 ng/ml



#19 AR-1242-4

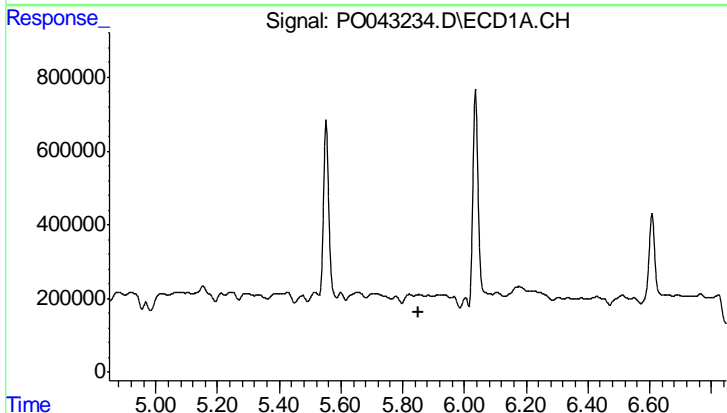
R.T.: 0.000 min
 Exp R.T.: 5.714 min
 Response: 0
 Conc: N.D.

Instrument :
 ECD_O
 ClientSampled :
 MW-104(4-5)RE



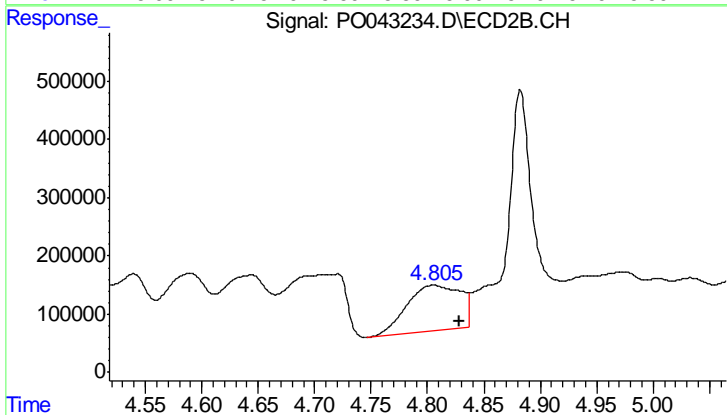
#19 AR-1242-4

R.T.: 4.644 min
 Delta R.T.: -0.021 min
 Response: 2046251
 Conc: 390.87 ng/ml



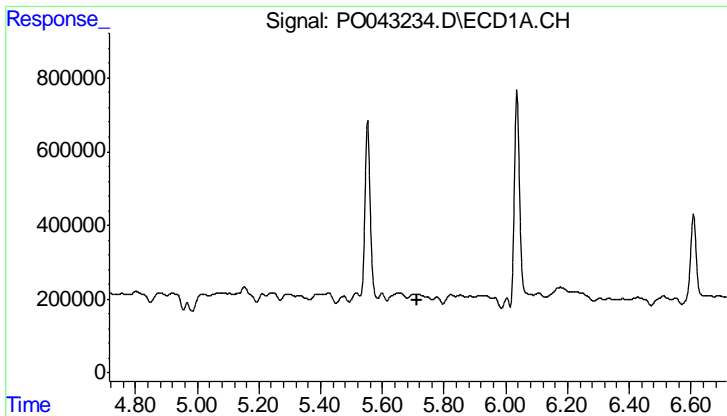
#20 AR-1242-5

R.T.: 0.000 min
 Exp R.T.: 5.850 min
 Response: 0
 Conc: N.D.



#20 AR-1242-5

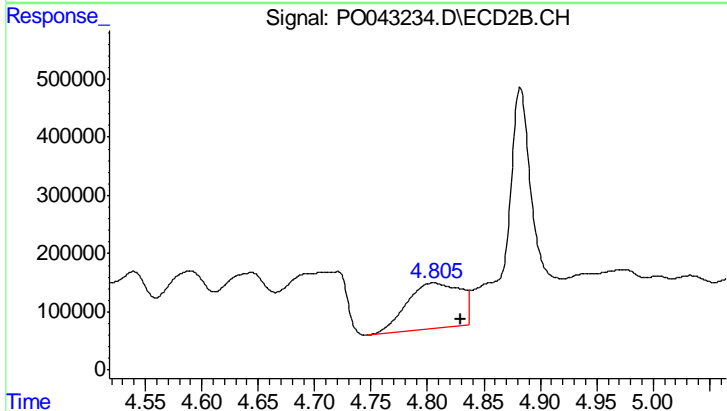
R.T.: 4.805 min
 Delta R.T.: -0.024 min
 Response: 2605971
 Conc: 450.70 ng/ml



#21 AR-1248-1

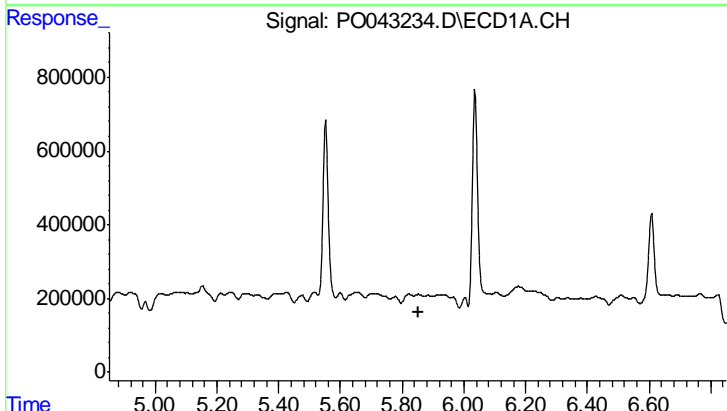
R.T.: 0.000 min
 Exp R.T.: 5.715 min
 Response: 0
 Conc: N.D.

Instrument :
 ECD_O
 ClientSampled :
 MW-104(4-5)RE



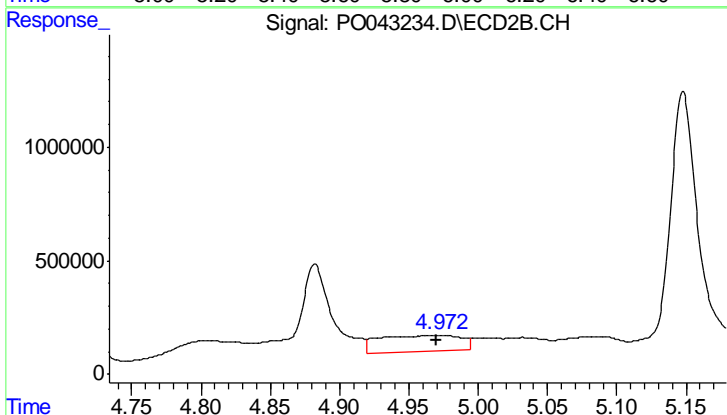
#21 AR-1248-1

R.T.: 4.805 min
 Delta R.T.: -0.024 min
 Response: 2605971
 Conc: 238.38 ng/ml



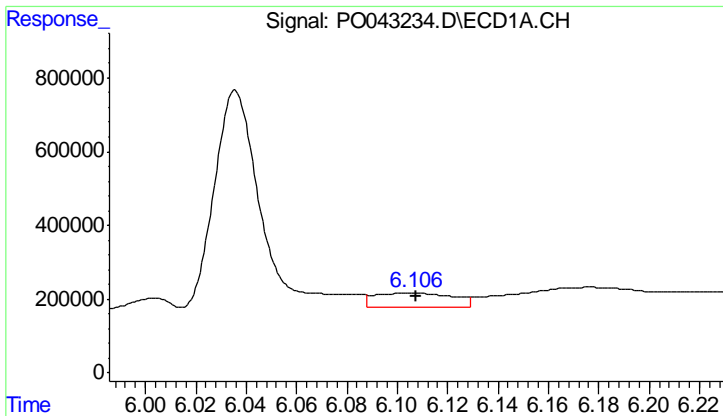
#22 AR-1248-2

R.T.: 0.000 min
 Exp R.T.: 5.851 min
 Response: 0
 Conc: N.D.



#22 AR-1248-2

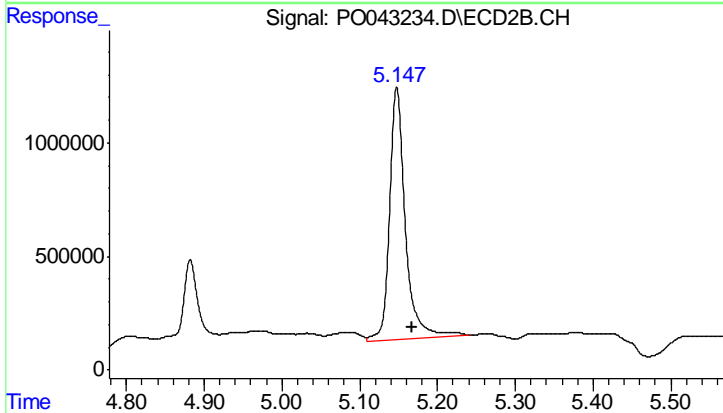
R.T.: 4.973 min
 Delta R.T.: 0.003 min
 Response: 2949581
 Conc: 303.34 ng/ml



#23 AR-1248-3

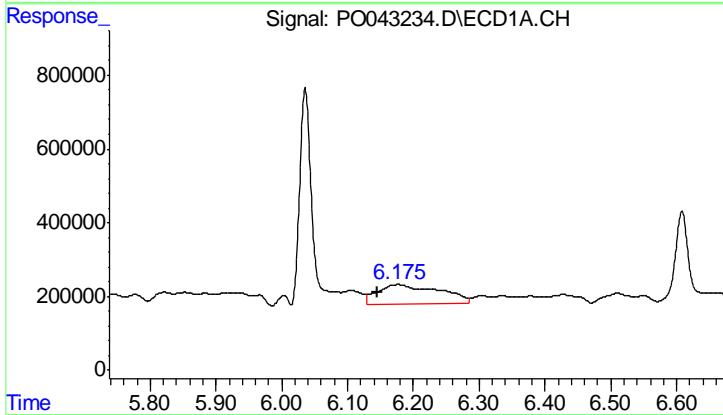
R.T.: 6.105 min
Delta R.T.: -0.003 min
Response: 850669
Conc: 93.03 ng/ml

Instrument :
ECD_O
ClientSampleId :
MW-104(4-5)RE



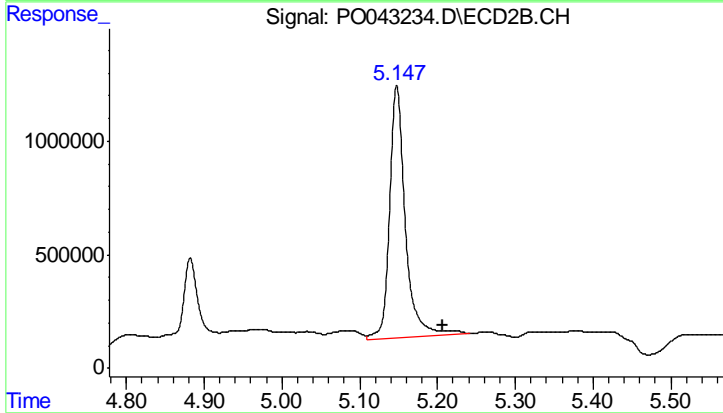
#23 AR-1248-3

R.T.: 5.148 min
Delta R.T.: -0.020 min
Response: 15781894
Conc: 930.51 ng/ml



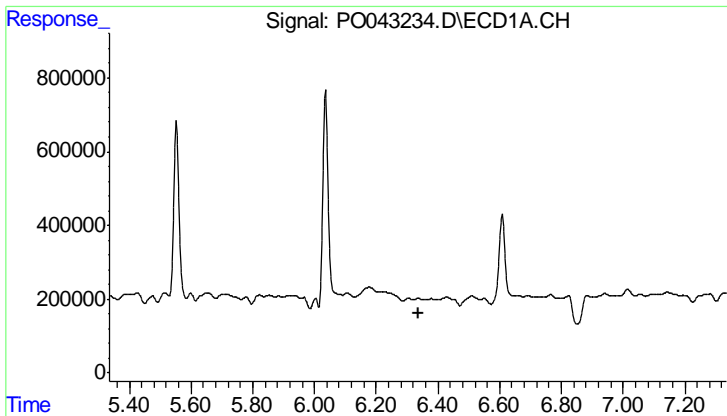
#24 AR-1248-4

R.T.: 6.176 min
Delta R.T.: 0.031 min
Response: 3525420
Conc: 393.41 ng/ml



#24 AR-1248-4

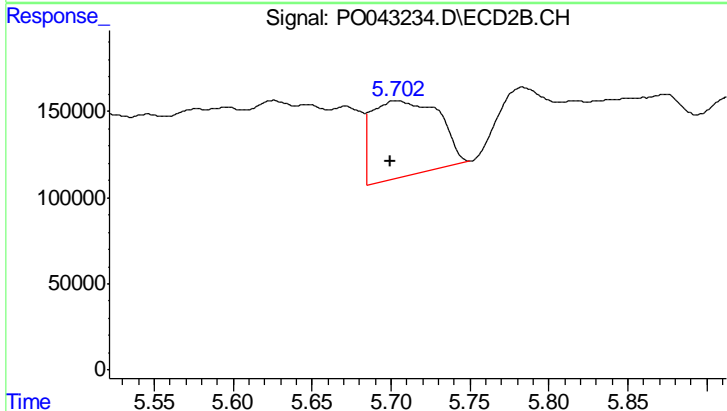
R.T.: 5.148 min
Delta R.T.: -0.058 min
Response: 15781894
Conc: 1168.82 ng/ml



#25 AR-1248-5

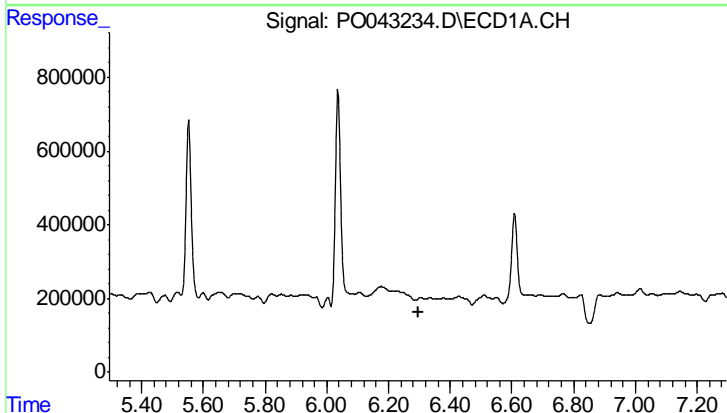
R.T.: 0.000 min
 Exp R.T.: 6.335 min
 Response: 0
 Conc: N.D.

Instrument :
 ECD_O
 ClientSampled :
 MW-104(4-5)RE



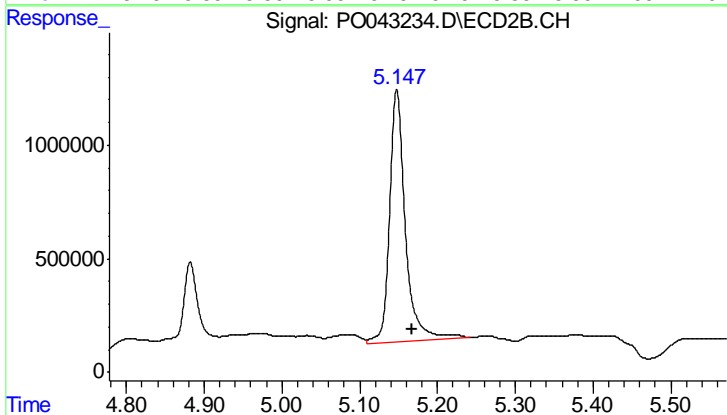
#25 AR-1248-5

R.T.: 5.703 min
 Delta R.T.: 0.003 min
 Response: 1317509
 Conc: 170.98 ng/ml



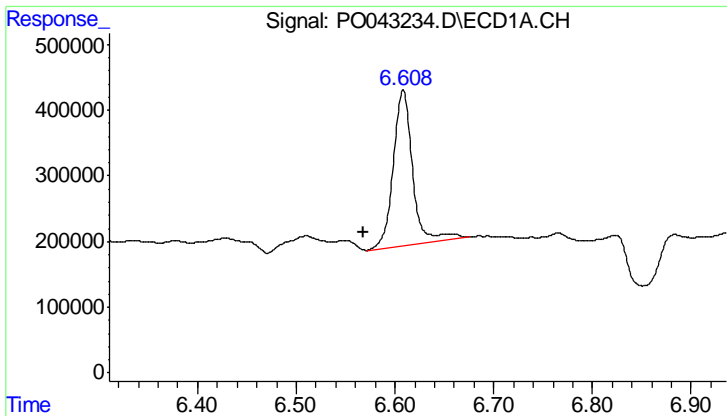
#26 AR-1254-1

R.T.: 0.000 min
 Exp R.T.: 6.296 min
 Response: 0
 Conc: N.D.



#26 AR-1254-1

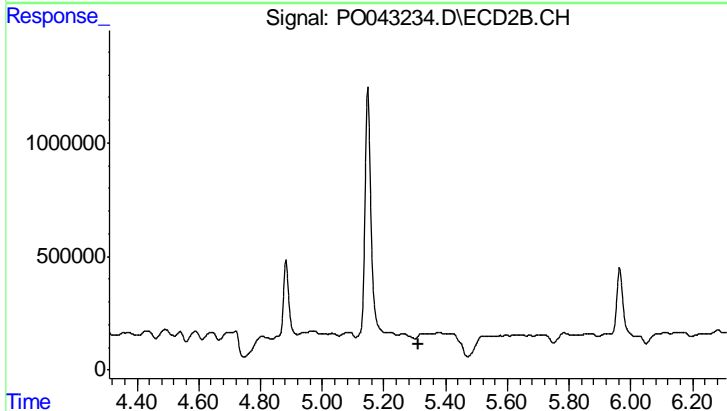
R.T.: 5.148 min
 Delta R.T.: -0.019 min
 Response: 15781894
 Conc: 853.27 ng/ml



#27 AR-1254-2

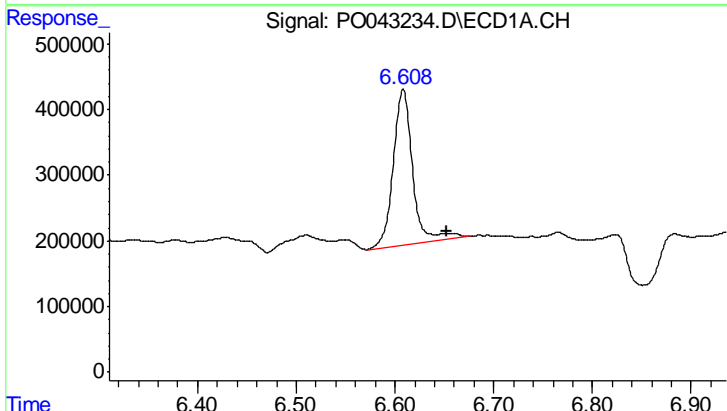
R.T.: 6.608 min
 Delta R.T.: 0.040 min
 Response: 3219264
 Conc: 370.14 ng/ml

Instrument :
 ECD_O
 ClientSampled :
 MW-104(4-5)RE



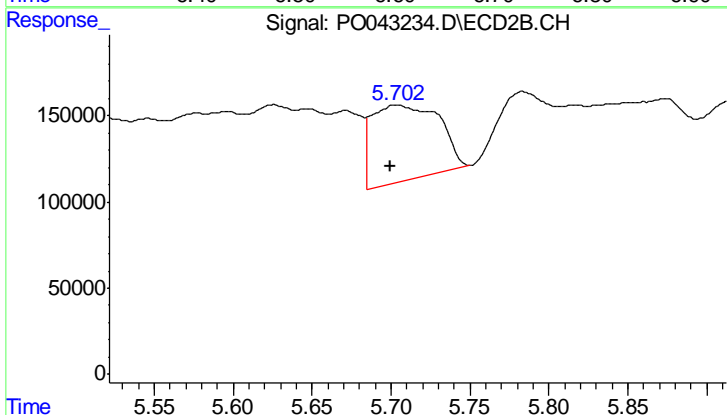
#27 AR-1254-2

R.T.: 0.000 min
 Exp R.T.: 5.310 min
 Response: 0
 Conc: N.D.



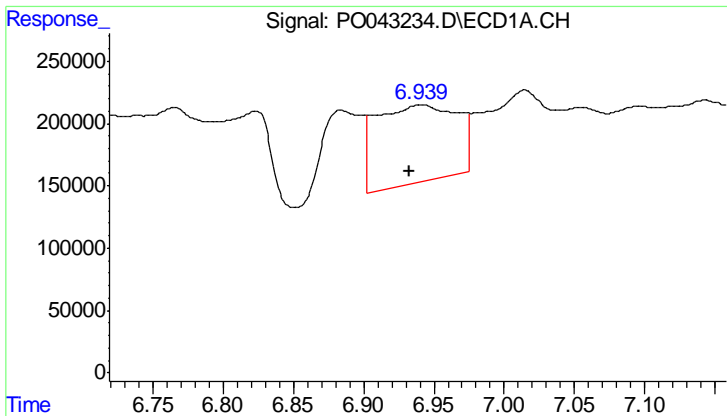
#28 AR-1254-3

R.T.: 6.608 min
 Delta R.T.: -0.044 min
 Response: 3219264
 Conc: 207.71 ng/ml



#28 AR-1254-3

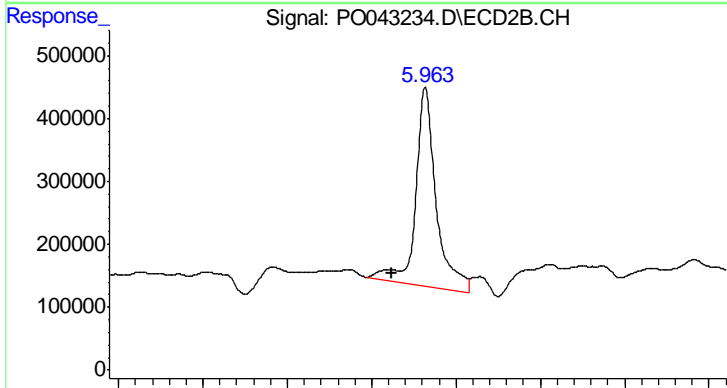
R.T.: 5.703 min
 Delta R.T.: 0.004 min
 Response: 1317509
 Conc: 47.89 ng/ml



#29 AR-1254-4

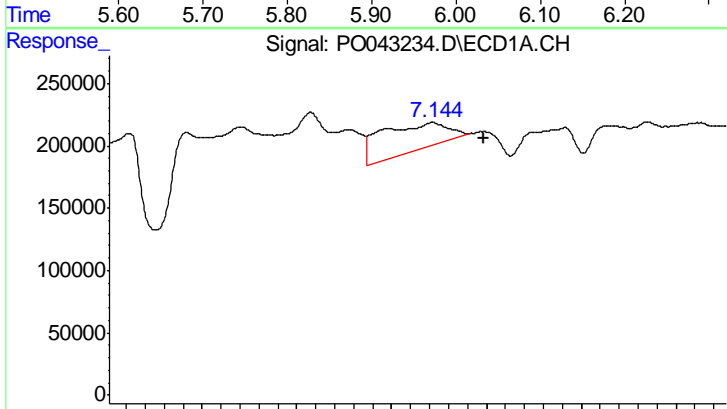
R.T.: 6.941 min
 Delta R.T.: 0.008 min
 Response: 2516169
 Conc: 191.81 ng/ml

Instrument :
 ECD_O
 ClientSampled :
 MW-104(4-5)RE



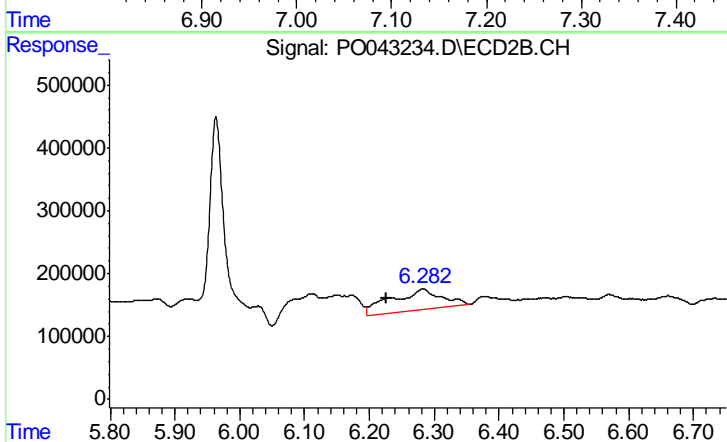
#29 AR-1254-4

R.T.: 5.963 min
 Delta R.T.: 0.040 min
 Response: 5380136
 Conc: 276.11 ng/ml



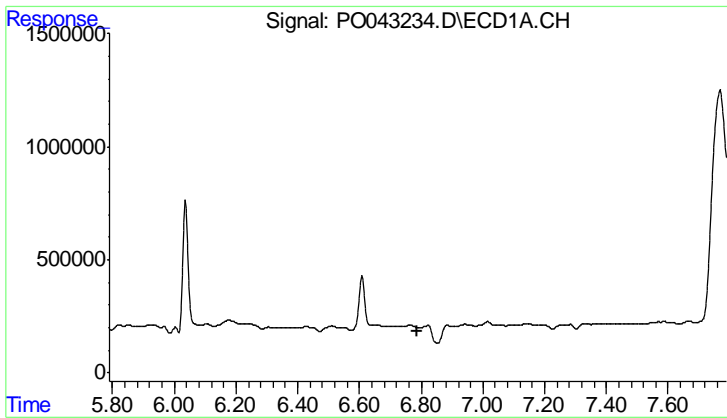
#30 AR-1254-5

R.T.: 7.143 min
 Delta R.T.: -0.055 min
 Response: 1067463
 Conc: 113.40 ng/ml



#30 AR-1254-5

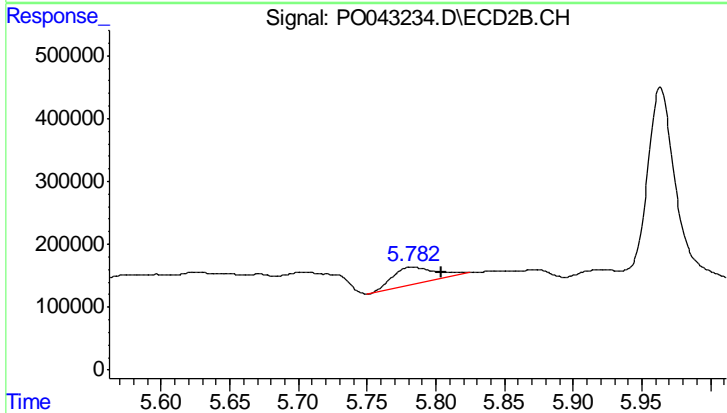
R.T.: 6.282 min
 Delta R.T.: 0.055 min
 Response: 1814913
 Conc: 137.02 ng/ml



#31 AR-1260-1

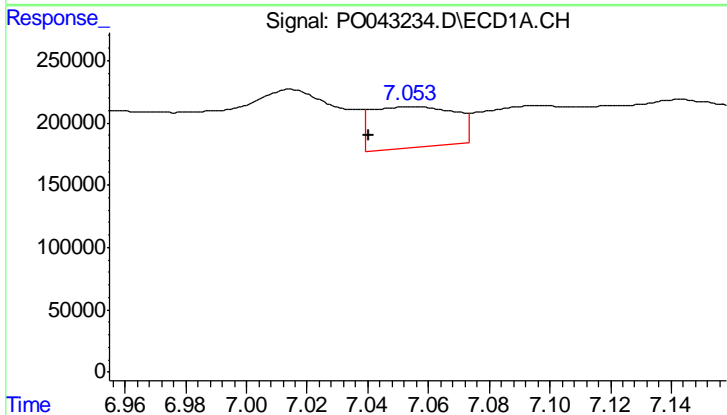
R.T.: 0.000 min
 Exp R.T.: 6.789 min
 Response: 0
 Conc: N.D.

Instrument :
 ECD_O
 ClientSampled :
 MW-104(4-5)RE



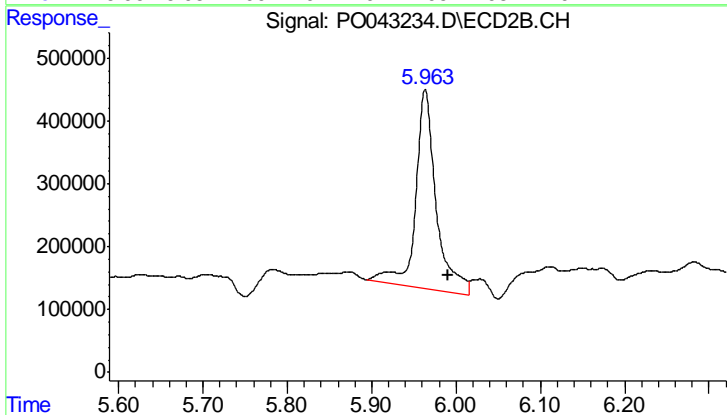
#31 AR-1260-1

R.T.: 5.783 min
 Delta R.T.: -0.022 min
 Response: 586957
 Conc: 24.31 ng/ml



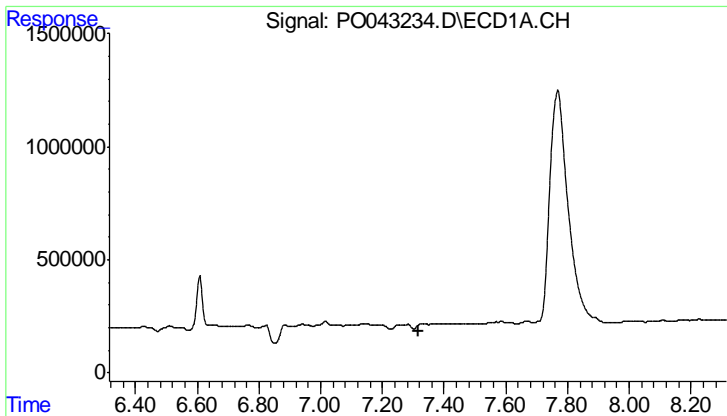
#32 AR-1260-2

R.T.: 7.055 min
 Delta R.T.: 0.015 min
 Response: 624325
 Conc: 34.13 ng/ml



#32 AR-1260-2

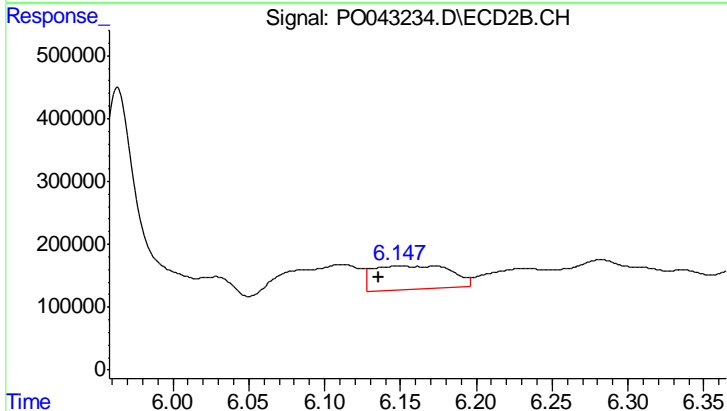
R.T.: 5.963 min
 Delta R.T.: -0.027 min
 Response: 5380136
 Conc: 160.16 ng/ml



#33 AR-1260-3

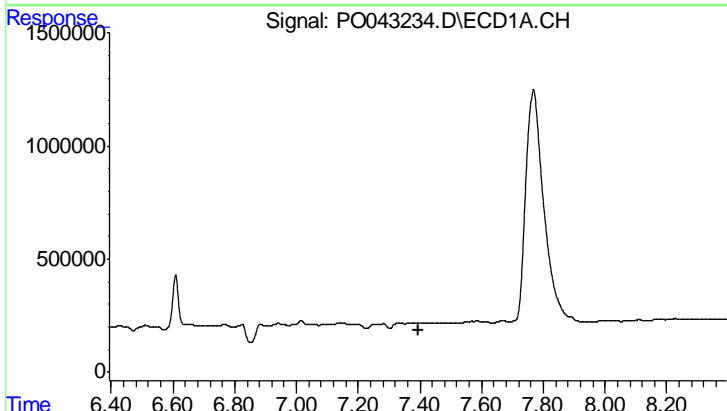
R.T.: 0.000 min
 Exp R.T.: 7.316 min
 Response: 0
 Conc: N.D.

Instrument :
 ECD_O
 ClientSampled :
 MW-104(4-5)RE



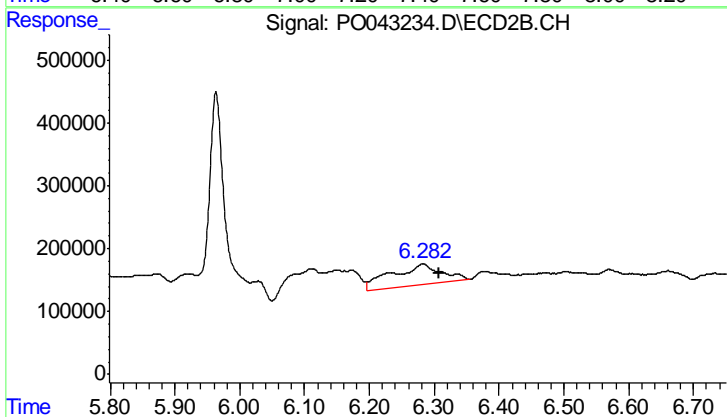
#33 AR-1260-3

R.T.: 6.148 min
 Delta R.T.: 0.012 min
 Response: 1301904
 Conc: 45.73 ng/ml



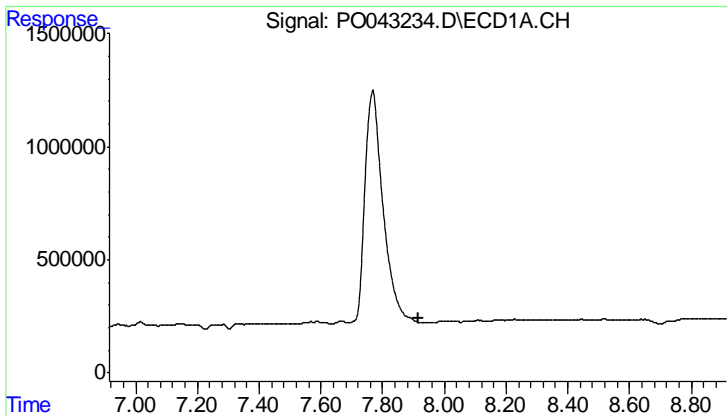
#34 AR-1260-4

R.T.: 0.000 min
 Exp R.T.: 7.394 min
 Response: 0
 Conc: N.D.



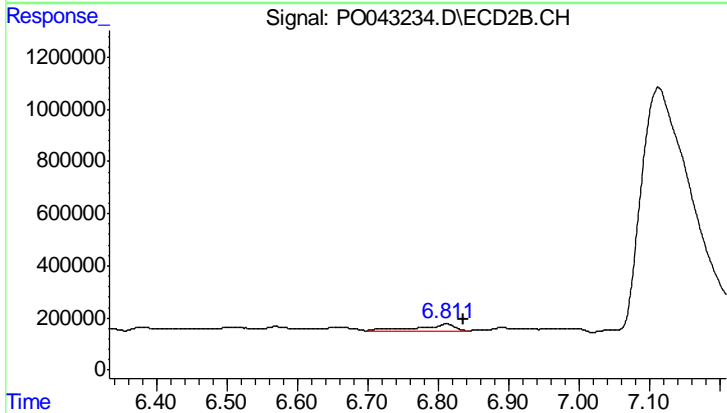
#34 AR-1260-4

R.T.: 6.282 min
 Delta R.T.: -0.025 min
 Response: 1814913
 Conc: 53.09 ng/ml

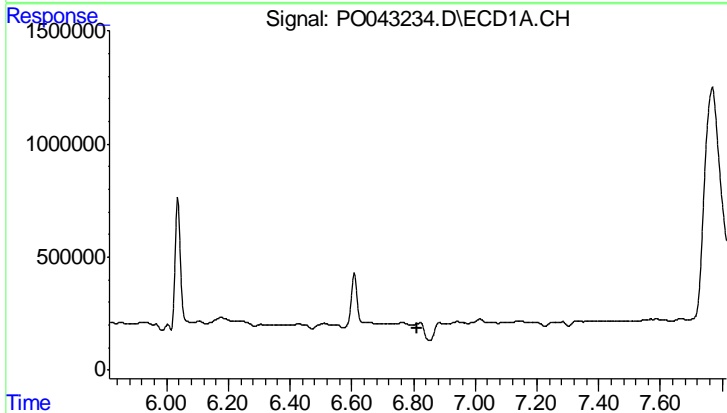


#35 AR-1260-5
 R.T.: 0.000 min
 Exp R.T.: 7.915 min
 Response: 0
 Conc: N.D.

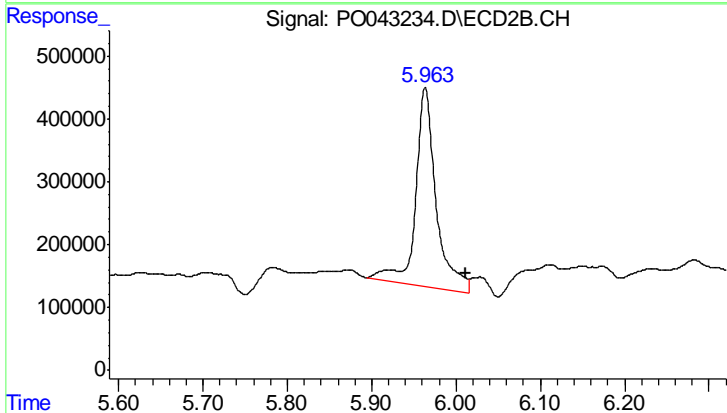
Instrument :
 ECD_O
 ClientSampleId :
 MW-104(4-5)RE



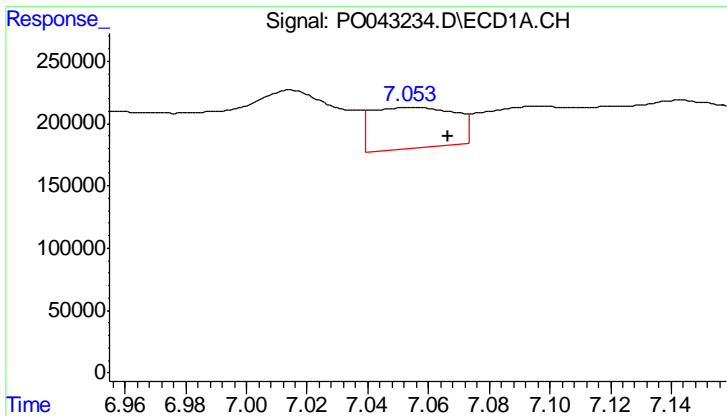
#35 AR-1260-5
 R.T.: 6.812 min
 Delta R.T.: -0.025 min
 Response: 921781
 Conc: 13.62 ng/ml



#36 AR-1262-1
 R.T.: 0.000 min
 Exp R.T.: 6.814 min
 Response: 0
 Conc: N.D.



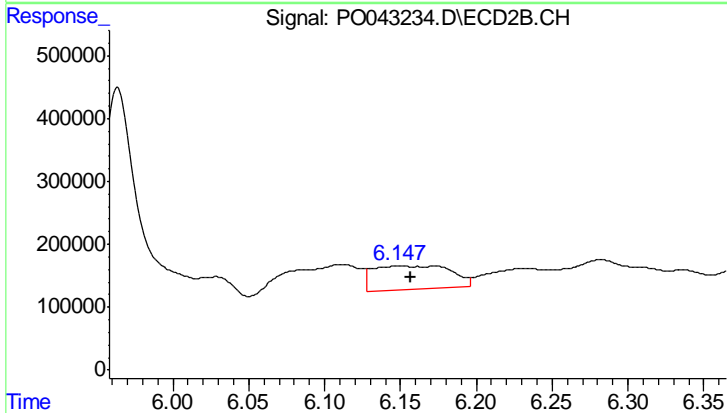
#36 AR-1262-1
 R.T.: 5.963 min
 Delta R.T.: -0.048 min
 Response: 5380136
 Conc: 242.23 ng/ml



#37 AR-1262-2

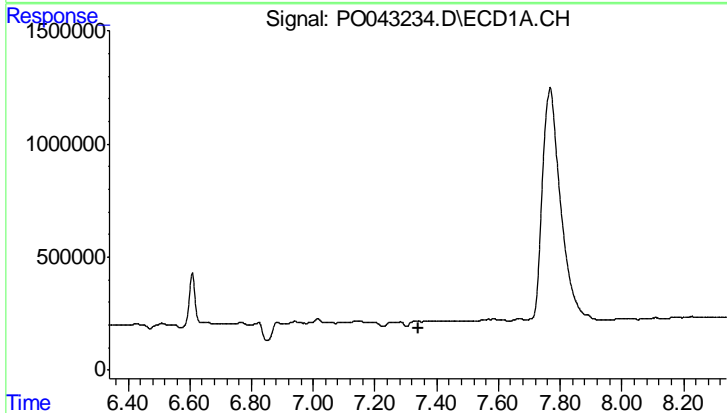
R.T.: 7.055 min
 Delta R.T.: -0.012 min
 Response: 624325
 Conc: 53.62 ng/ml

Instrument :
 ECD_O
 ClientSampleId :
 MW-104(4-5)RE



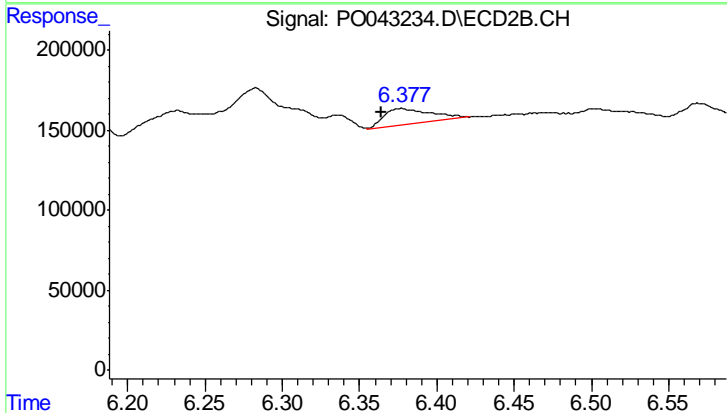
#37 AR-1262-2

R.T.: 6.148 min
 Delta R.T.: -0.010 min
 Response: 1301904
 Conc: 64.74 ng/ml



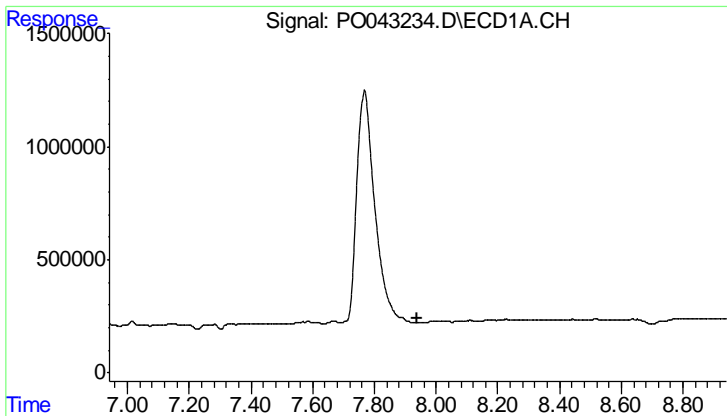
#38 AR-1262-3

R.T.: 0.000 min
 Exp R.T. : 7.340 min
 Response: 0
 Conc: N.D.



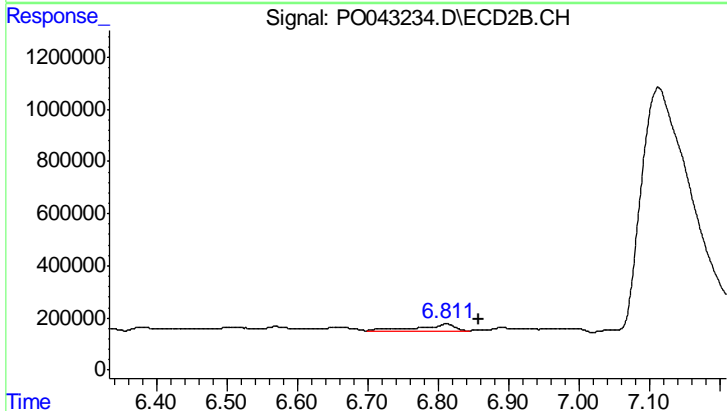
#38 AR-1262-3

R.T.: 6.377 min
 Delta R.T.: 0.013 min
 Response: 205546
 Conc: 5.55 ng/ml

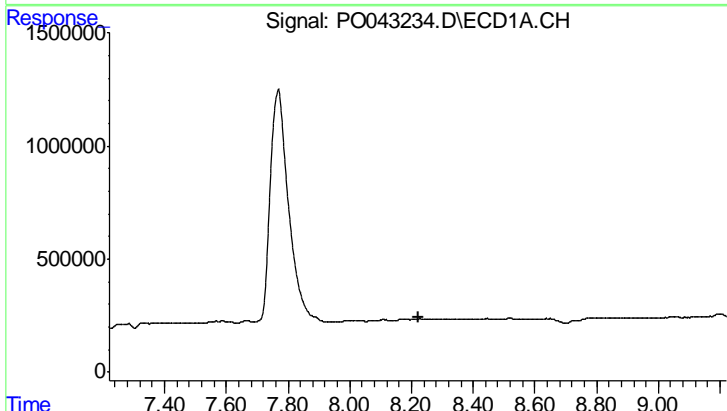


#40 AR-1262-5
 R.T.: 0.000 min
 Exp R.T.: 7.941 min
 Response: 0
 Conc: N.D.

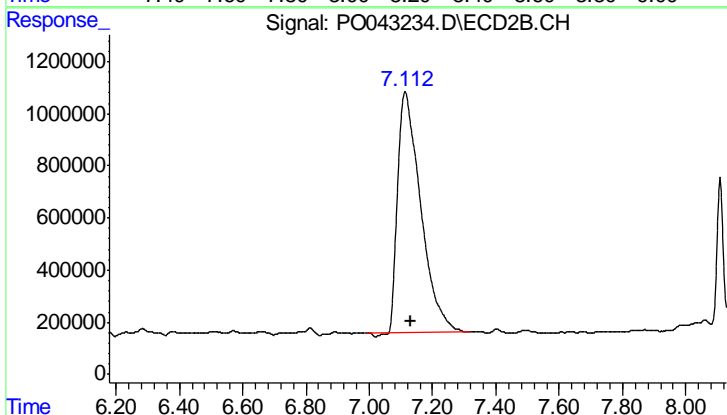
Instrument :
 ECD_O
 ClientSampled :
 MW-104(4-5)RE



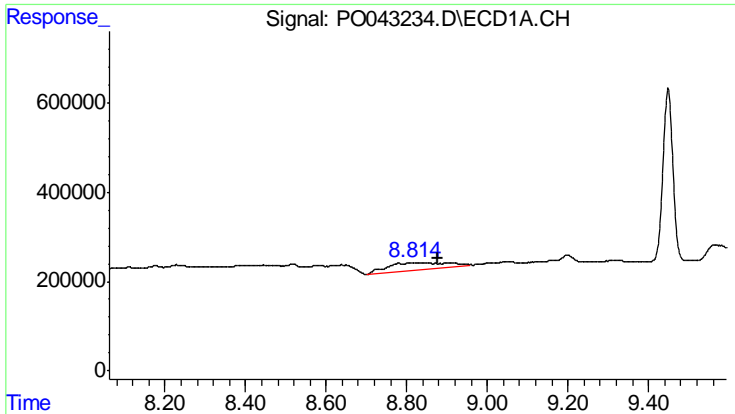
#40 AR-1262-5
 R.T.: 6.812 min
 Delta R.T.: -0.046 min
 Response: 921781
 Conc: 14.55 ng/ml



#41 AR-1268-1
 R.T.: 0.000 min
 Exp R.T.: 8.221 min
 Response: 0
 Conc: N.D.



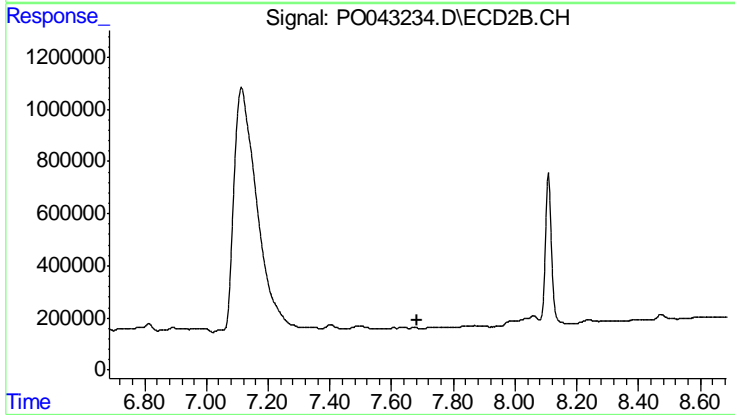
#41 AR-1268-1
 R.T.: 7.113 min
 Delta R.T.: -0.019 min
 Response: 46668925
 Conc: 636.77 ng/ml



#44 AR-1268-4

R.T.: 8.813 min
 Delta R.T.: -0.063 min
 Response: 1575619
 Conc: 126.41 ng/ml

Instrument :
 ECD_O
ClientSampled :
 MW-104(4-5)RE



#44 AR-1268-4

R.T.: 0.000 min
 Exp R.T. : 7.685 min
 Response: 0
 Conc: N.D.