

Data Path : P:\HPCHEM1\ECD\_O\Data\PO032418\  
 Data File : PO043284.D  
 Signal(s) : Signal #1: ECD1A.CH Signal #2: ECD2B.CH  
 Acq On : 23 Mar 2018 15:43  
 Operator : SM/UA  
 Sample : J1997-17DL 10X  
 Misc :  
 ALS Vial : 6 Sample Multiplier: 1

Instrument :  
 ECD\_O  
 ClientSampleId :  
 SLAB-CONCRETE-ADL

Integration File signal 1: autoint1.e  
 Integration File signal 2: autoint2.e  
 Quant Time: Mar 23 16:11:32 2018  
 Quant Method : P:\HPCHEM1\ECD\_O\methods\PO032318.M  
 Quant Title : GC EXTRACTABLES  
 QLast Update : Fri Mar 23 05:22:35 2018  
 Response via : Initial Calibration  
 Integrator: ChemStation 6890 Scale Mode: Small noise peaks clipped

Volume Inj. : 2 µl  
 Signal #1 Phase : ZB-MR1 Signal #2 Phase: ZB-MR2  
 Signal #1 Info : 30Mx0.32mmx 0.50µ Signal #2 Info : 30M x 0.32mm x 0.25µm

Compound	RT#1	RT#2	Resp#1	Resp#2	ng/ml	ng/ml
-----						
System Monitoring Compounds						
1) SA Tetrachlo...	4.083	3.337	469933	650726	2.218	2.223
2) SA Decachlor...	9.443	0.000	311990	0	1.285	N.D. #
Target Compounds						
4) L1 AR-1016-2	0.000	4.587	0	2331654	N.D.	322.016 #
5) L1 AR-1016-3	0.000	4.625	0	636036	N.D.	70.972 #
6) L1 AR-1016-4	5.803	4.789	568468	1368669	79.715	141.122 #
7) L1 AR-1016-5	6.032	5.125	5086231	7970096	773.074	785.640
12) L3 AR-1232-2	5.205	0.000	37028	0	11.446	N.D. #
13) L3 AR-1232-3	5.205	0.000	37028	0	7.212	N.D. #
14) L3 AR-1232-4	0.000	4.587	0	2331654	N.D.	665.406 #
15) L3 AR-1232-5	0.000	4.587	0	2331654	N.D.	952.491 #
17) L4 AR-1242-2	5.205	0.000	37028	0	4.461	N.D. #
18) L4 AR-1242-3	0.000	4.587	0	2331654	N.D.	406.380 #
19) L4 AR-1242-4	5.666	4.625	1226665	636036	294.092	111.322 #
20) L4 AR-1242-5	5.803	4.789	568468	1368669	120.308	220.380 #
21) L5 AR-1248-1	5.666	4.789	1226665	1368669	162.809	120.856 #
22) L5 AR-1248-2	5.803	4.929	568468	651067	85.320	59.399 #
23) L5 AR-1248-3	6.056	5.125	2285515	7970096	248.759	456.769 #
24) L5 AR-1248-4	6.097	5.164	1810164	958917	195.977	67.346 #
25) L5 AR-1248-5	6.293	5.656	3361979	14666634	534.059	1797.046 #
26) L6 AR-1254-1	6.244	5.125	8412253	7970096	528.342	371.071 #
27) L6 AR-1254-2	6.516	5.269	5571368	8126904	540.171	421.796
28) L6 AR-1254-3	6.601	5.656	10537190	14666634	584.412	457.796
29) L6 AR-1254-4	6.879	5.880	9593431	10664523	644.491	402.298 #
30) L6 AR-1254-5	7.143	6.182	8190529	8110485	751.833	546.932 #
31) L7 AR-1260-1	6.761	5.781	6103455	9154938	434.275	408.555
32) L7 AR-1260-2	7.013	5.967	9070352	11308805	499.512	349.905 #
33) L7 AR-1260-3	7.290	6.110	19624178	9395704	965.564	358.037 #
34) L7 AR-1260-4	7.422	6.283	1026016	25455829	139.954	829.634 #
35) L7 AR-1260-5	7.886	6.811	5405773	8150959	177.485	140.028
36) L8 AR-1262-1	6.761	5.967	6103455	11308805	574.220	492.612
37) L8 AR-1262-2	7.013	6.110	9070352	9395704	673.408	449.369 #
38) L8 AR-1262-3	7.290	6.283	19624178	25455829	1573.169	684.526 #
39) L8 AR-1262-4	7.572	6.569	7741058	1735478	462.963	60.007 #
40) L8 AR-1262-5	7.886	6.811	5405773	8150959	158.866	127.879
41) L9 AR-1268-1	8.173	7.145	4093743	5693596	78.994	59.149 #
42) L9 AR-1268-2	8.217	7.145	1056984	5693596	22.783	65.416 #
44) L9 AR-1268-4	8.807	7.635	404109	370854	23.873	12.571 #

Data Path : P:\HPCHEM1\ECD\_O\Data\PO032418\  
Data File : PO043284.D  
Signal(s) : Signal #1: ECD1A.CH Signal #2: ECD2B.CH  
Acq On : 23 Mar 2018 15:43  
Operator : SM/UA  
Sample : J1997-17DL 10X  
Misc :  
ALS Vial : 6 Sample Multiplier: 1

Instrument :  
ECD\_O  
ClientSampleId :  
SLAB-CONCRETE-ADL

Integration File signal 1: autoint1.e  
Integration File signal 2: autoint2.e  
Quant Time: Mar 23 16:11:32 2018  
Quant Method : P:\HPCHEM1\ECD\_O\methods\PO032318.M  
Quant Title : GC EXTRACTABLES  
QLast Update : Fri Mar 23 05:22:35 2018  
Response via : Initial Calibration  
Integrator: ChemStation 6890 Scale Mode: Small noise peaks clipped

Volume Inj. : 2 µl  
Signal #1 Phase : ZB-MR1 Signal #2 Phase: ZB-MR2  
Signal #1 Info : 30Mx0.32mmx 0.50µ Signal #2 Info : 30M x 0.32mm x 0.25µm

Compound	RT#1	RT#2	Resp#1	Resp#2	ng/ml	ng/ml
----------	------	------	--------	--------	-------	-------

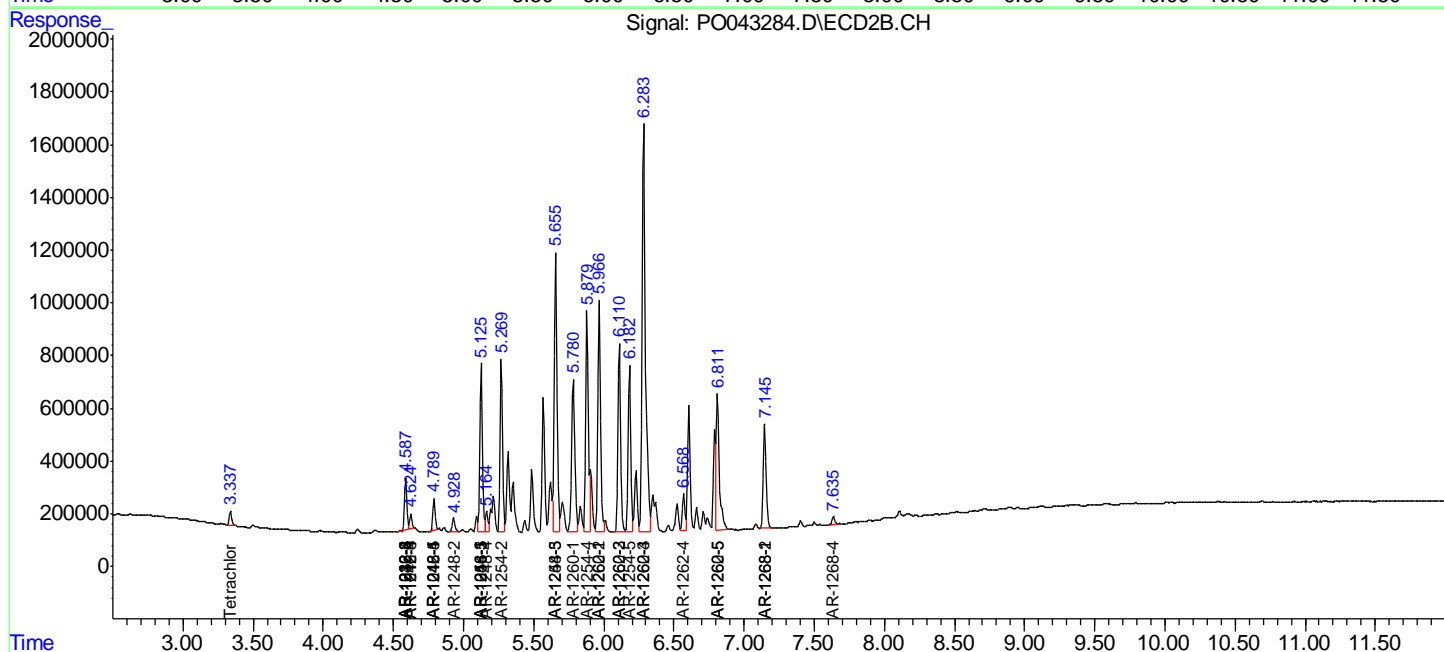
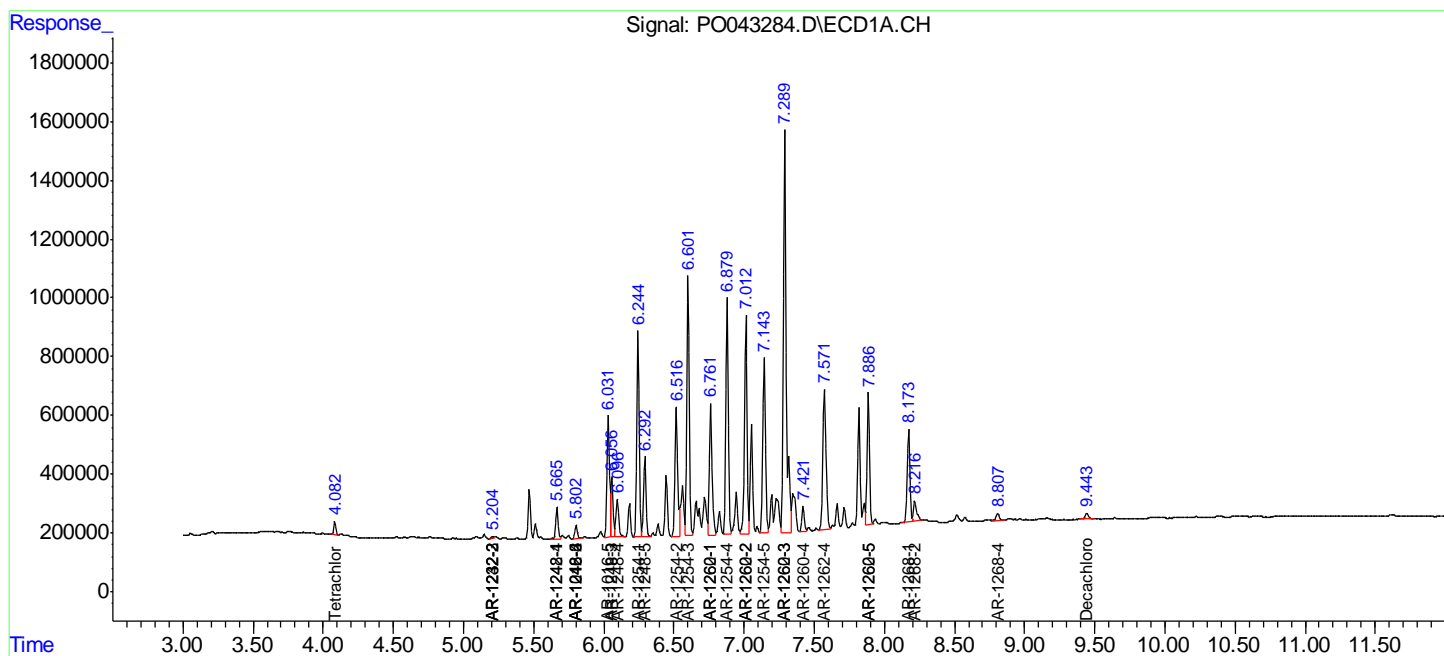
(f)=RT Delta > 1/2 Window (#)=Amounts differ by > 25% (m)=manual int.

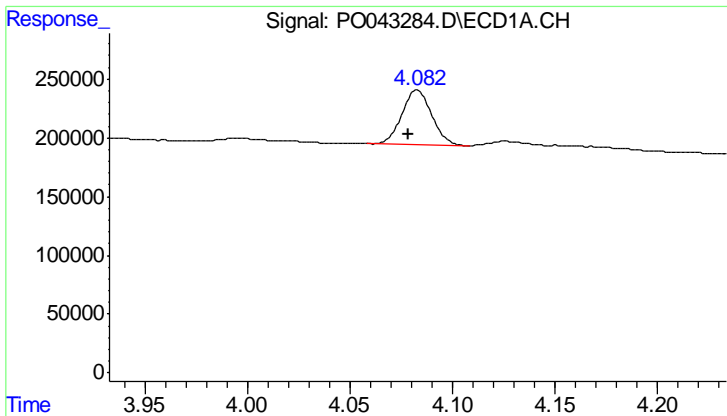
Data Path : P:\HPCHEM1\ECD\_O\Data\PO032418\  
 Data File : PO043284.D  
 Signal(s) : Signal #1: ECD1A.CH Signal #2: ECD2B.CH  
 Acq On : 23 Mar 2018 15:43  
 Operator : SM/UA  
 Sample : J1997-17DL 10X  
 Misc :  
 ALS Vial : 6 Sample Multiplier: 1

Instrument :  
 ECD\_O  
 Client Sampled :  
 SLAB-CONCRETE-ADL

Integration File signal 1: autoint1.e  
 Integration File signal 2: autoint2.e  
 Quant Time: Mar 23 16:11:32 2018  
 Quant Method : P:\HPCHEM1\ECD\_O\methods\PO032318.M  
 Quant Title : GC EXTRACTABLES  
 QLast Update : Fri Mar 23 05:22:35 2018  
 Response via : Initial Calibration  
 Integrator: ChemStation 6890 Scale Mode: Small noise peaks clipped

Volume Inj. : 2 µl  
 Signal #1 Phase : ZB-MR1 Signal #2 Phase: ZB-MR2  
 Signal #1 Info : 30Mx0.32mmx 0.50µ Signal #2 Info : 30M x 0.32mm x 0.25µm

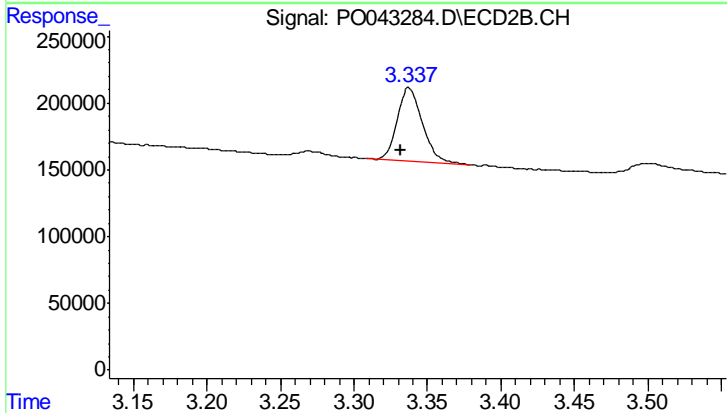




#1 Tetrachloro-m-xylene

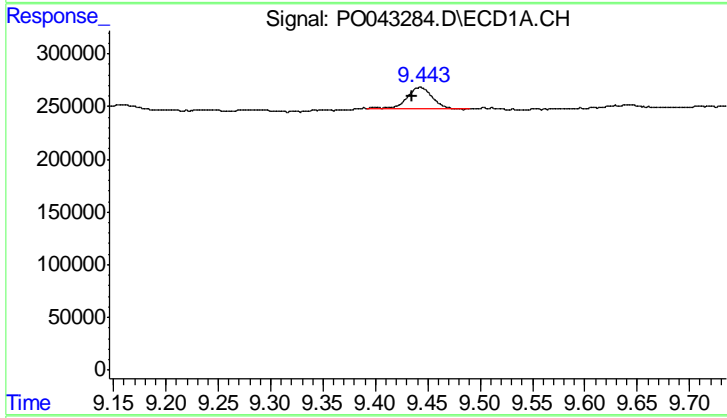
R.T.: 4.083 min  
 Delta R.T.: 0.004 min  
 Response: 469933  
 Conc: 2.22 ng/ml

Instrument :  
 ECD\_O  
 ClientSampleId :  
 SLAB-CONCRETE-ADL



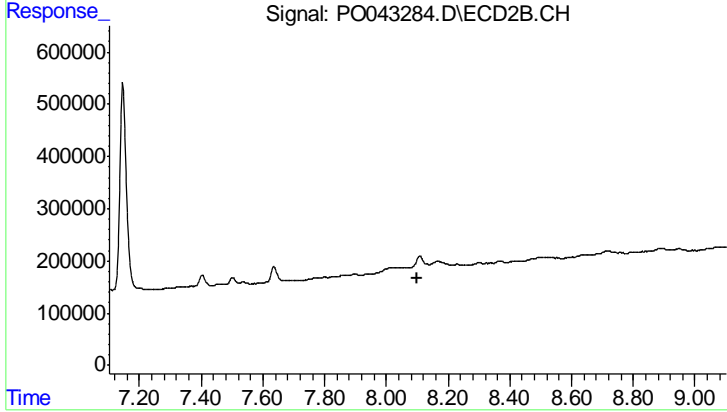
#1 Tetrachloro-m-xylene

R.T.: 3.337 min  
 Delta R.T.: 0.005 min  
 Response: 650726  
 Conc: 2.22 ng/ml



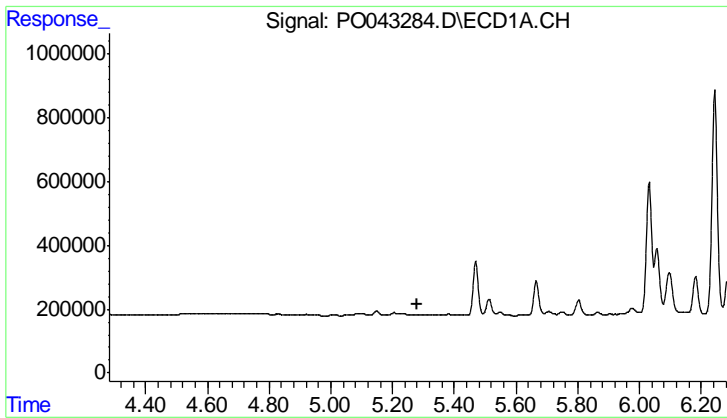
#2 Decachlorobiphenyl

R.T.: 9.443 min  
 Delta R.T.: 0.008 min  
 Response: 311990  
 Conc: 1.28 ng/ml



#2 Decachlorobiphenyl

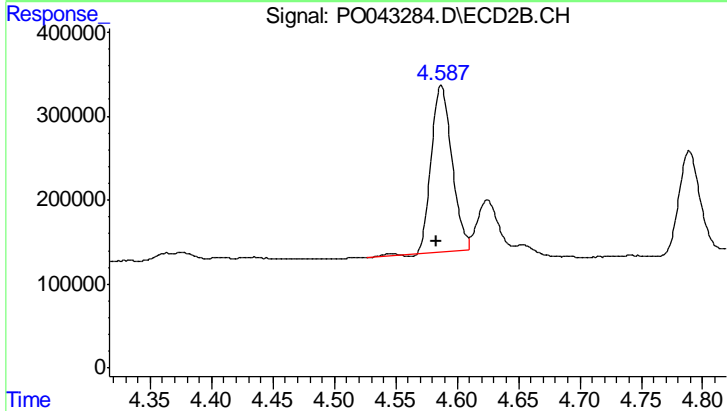
R.T.: 0.000 min  
 Exp R.T. : 8.102 min  
 Response: 0  
 Conc: N.D.



#4 AR-1016-2

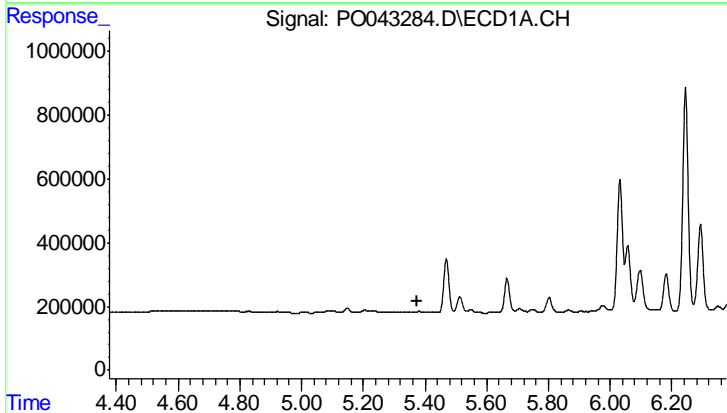
R.T.: 0.000 min  
 Exp R.T.: 5.282 min  
 Response: 0  
 Conc: N.D.

Instrument :  
 ECD\_O  
 ClientSampleId :  
 SLAB-CONCRETE-ADL



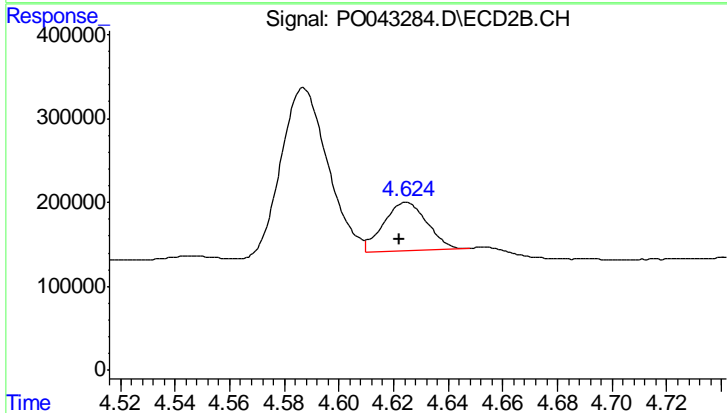
#4 AR-1016-2

R.T.: 4.587 min  
 Delta R.T.: 0.003 min  
 Response: 2331654  
 Conc: 322.02 ng/ml



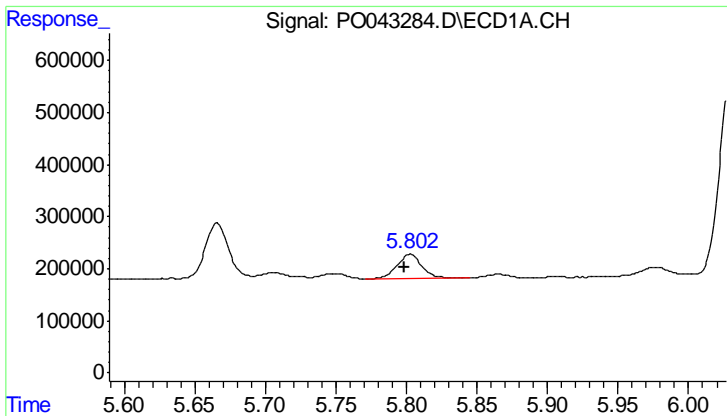
#5 AR-1016-3

R.T.: 0.000 min  
 Exp R.T.: 5.377 min  
 Response: 0  
 Conc: N.D.



#5 AR-1016-3

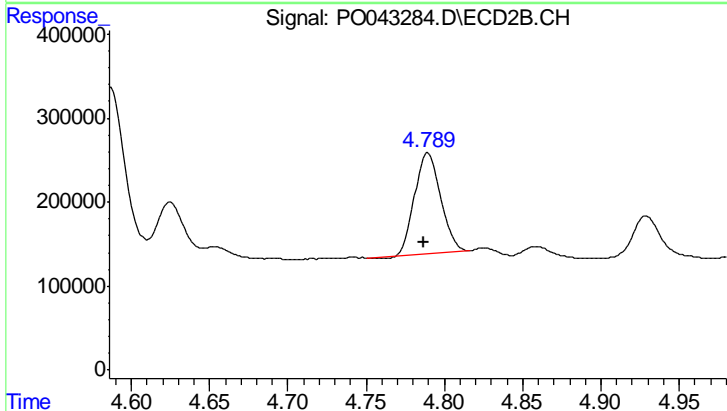
R.T.: 4.625 min  
 Delta R.T.: 0.003 min  
 Response: 636036  
 Conc: 70.97 ng/ml



#6 AR-1016-4

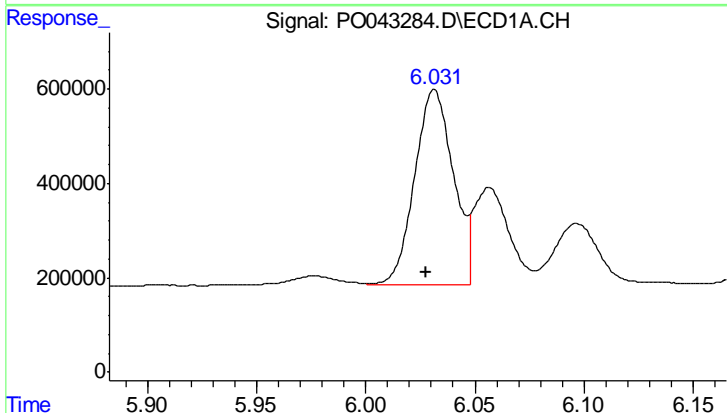
R.T.: 5.803 min  
 Delta R.T.: 0.004 min  
 Response: 568468  
 Conc: 79.72 ng/ml

Instrument :  
 ECD\_O  
 ClientSampleId :  
 SLAB-CONCRETE-ADL



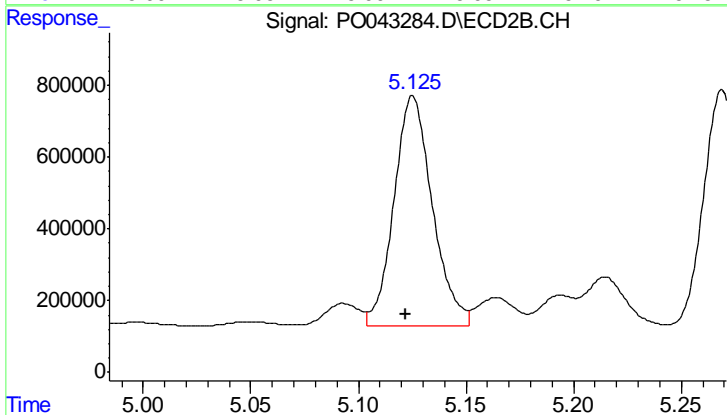
#6 AR-1016-4

R.T.: 4.789 min  
 Delta R.T.: 0.003 min  
 Response: 1368669  
 Conc: 141.12 ng/ml



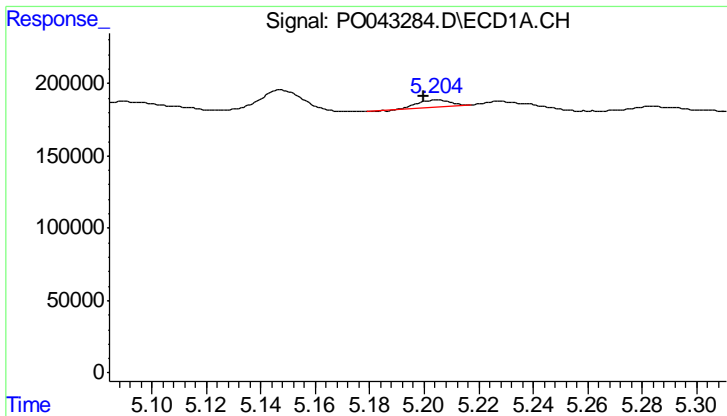
#7 AR-1016-5

R.T.: 6.032 min  
 Delta R.T.: 0.004 min  
 Response: 5086231  
 Conc: 773.07 ng/ml



#7 AR-1016-5

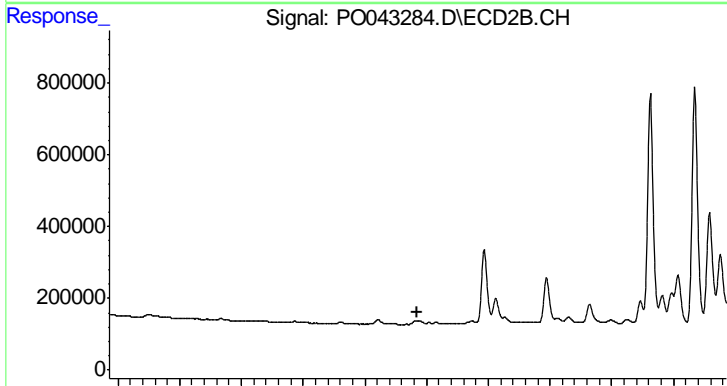
R.T.: 5.125 min  
 Delta R.T.: 0.003 min  
 Response: 7970096  
 Conc: 785.64 ng/ml



#12 AR-1232-2

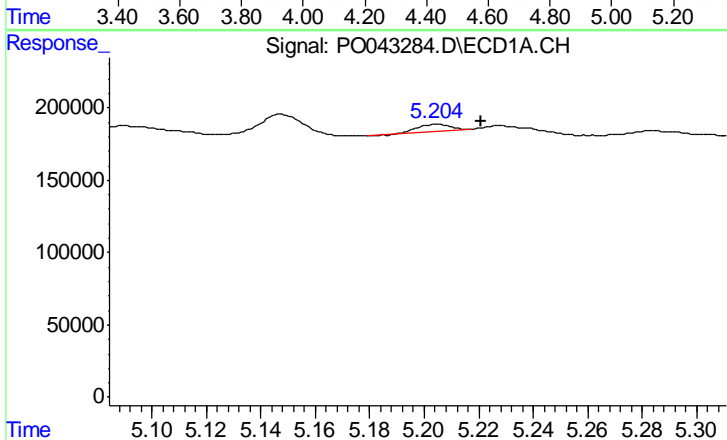
R.T.: 5.205 min  
 Delta R.T.: 0.005 min  
 Response: 37028  
 Conc: 11.45 ng/ml

Instrument :  
 ECD\_O  
 ClientSampleId :  
 SLAB-CONCRETE-ADL



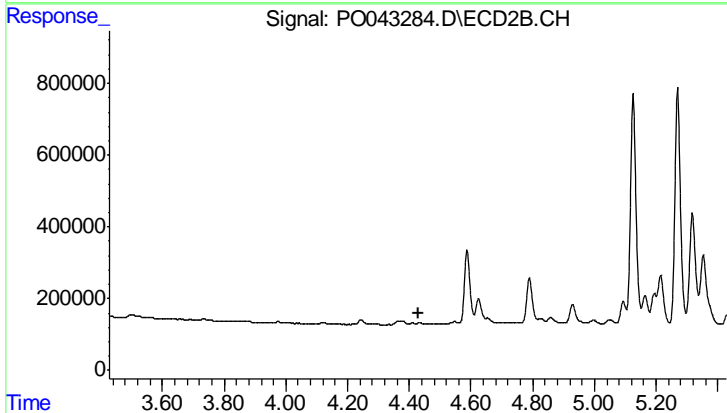
#12 AR-1232-2

R.T.: 0.000 min  
 Exp R.T.: 4.372 min  
 Response: 0  
 Conc: N.D.



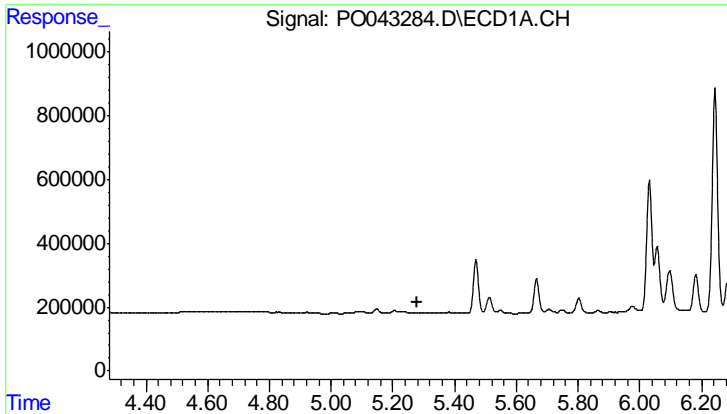
#13 AR-1232-3

R.T.: 5.205 min  
 Delta R.T.: -0.016 min  
 Response: 37028  
 Conc: 7.21 ng/ml



#13 AR-1232-3

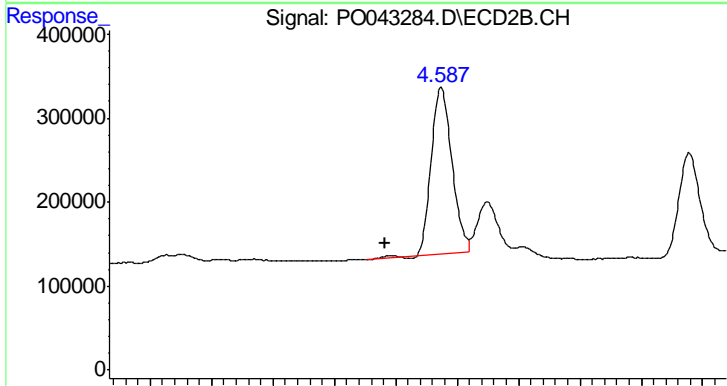
R.T.: 0.000 min  
 Exp R.T.: 4.428 min  
 Response: 0  
 Conc: N.D.



#14 AR-1232-4

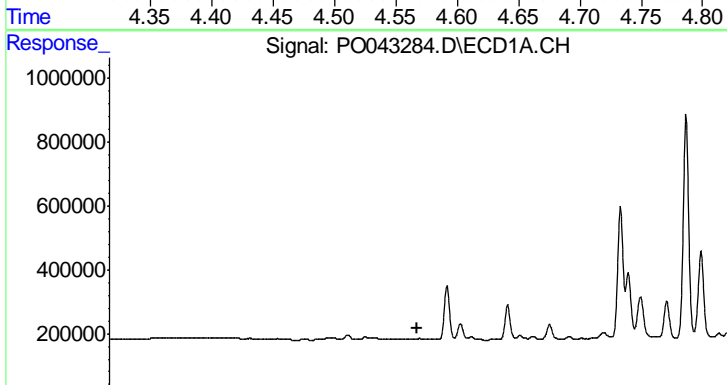
R.T.: 0.000 min  
 Exp R.T.: 5.281 min  
 Response: 0  
 Conc: N.D.

**Instrument :**  
 ECD\_O  
**ClientSampled :**  
 SLAB-CONCRETE-ADL



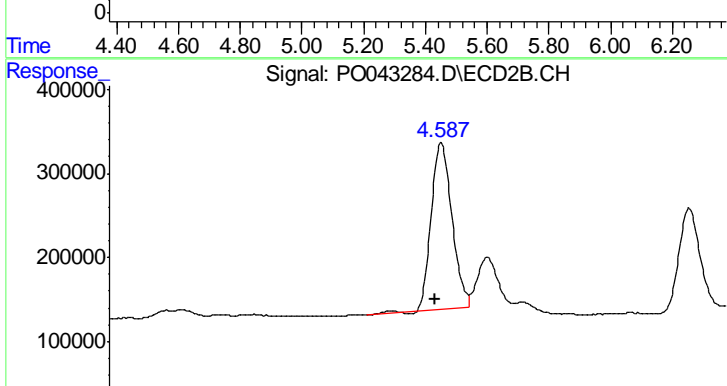
#14 AR-1232-4

R.T.: 4.587 min  
 Delta R.T.: 0.046 min  
 Response: 2331654  
 Conc: 665.41 ng/ml



#15 AR-1232-5

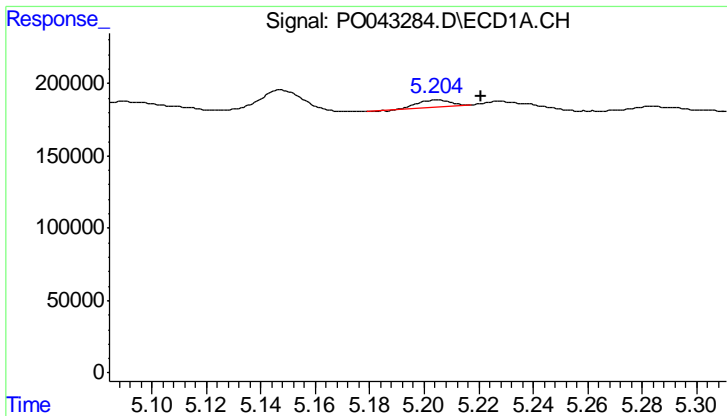
R.T.: 0.000 min  
 Exp R.T.: 5.375 min  
 Response: 0  
 Conc: N.D.



#15 AR-1232-5

R.T.: 4.587 min  
 Delta R.T.: 0.004 min  
 Response: 2331654  
 Conc: 952.49 ng/ml

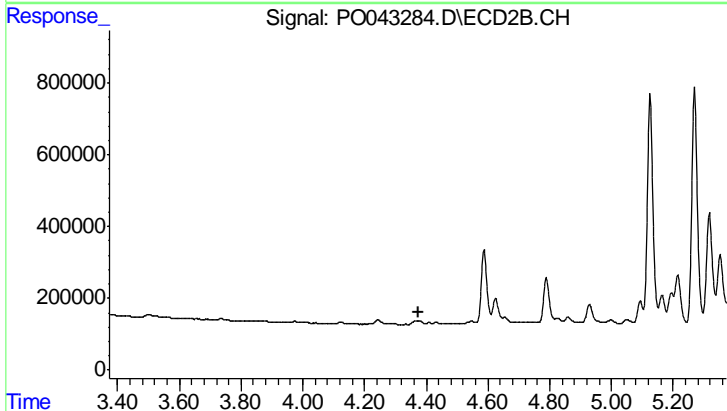




#17 AR-1242-2

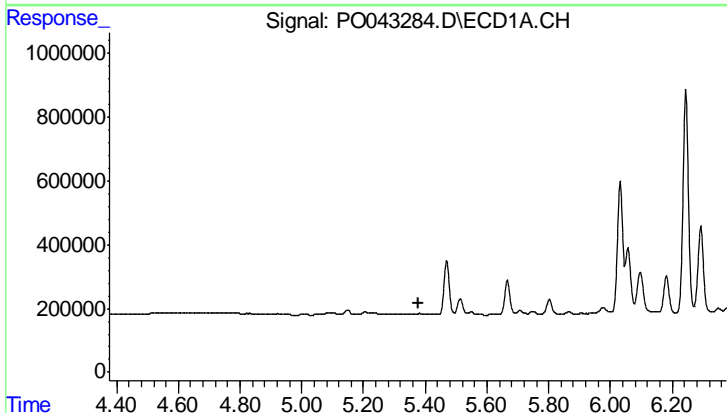
R.T.: 5.205 min  
 Delta R.T.: -0.016 min  
 Response: 37028  
 Conc: 4.46 ng/ml

Instrument :  
 ECD\_O  
 ClientSampleId :  
 SLAB-CONCRETE-ADL



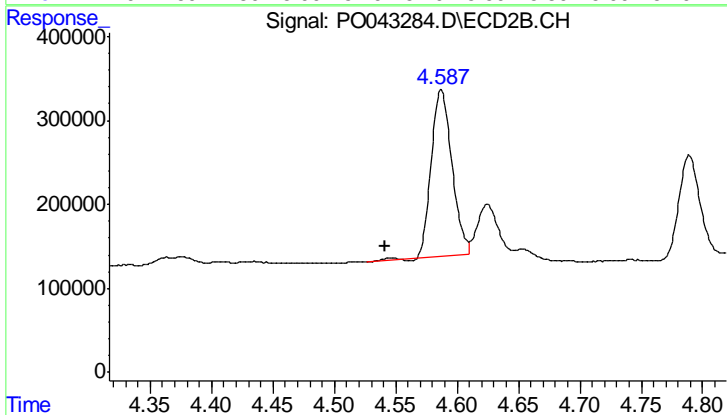
#17 AR-1242-2

R.T.: 0.000 min  
 Exp R.T. : 4.373 min  
 Response: 0  
 Conc: N.D.



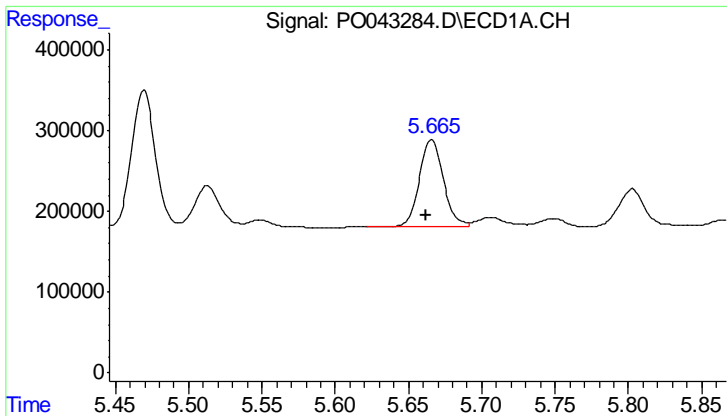
#18 AR-1242-3

R.T.: 0.000 min  
 Exp R.T. : 5.376 min  
 Response: 0  
 Conc: N.D.



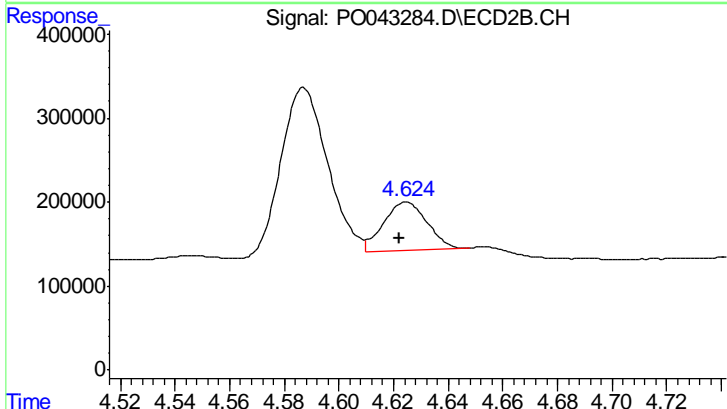
#18 AR-1242-3

R.T.: 4.587 min  
 Delta R.T.: 0.045 min  
 Response: 2331654  
 Conc: 406.38 ng/ml

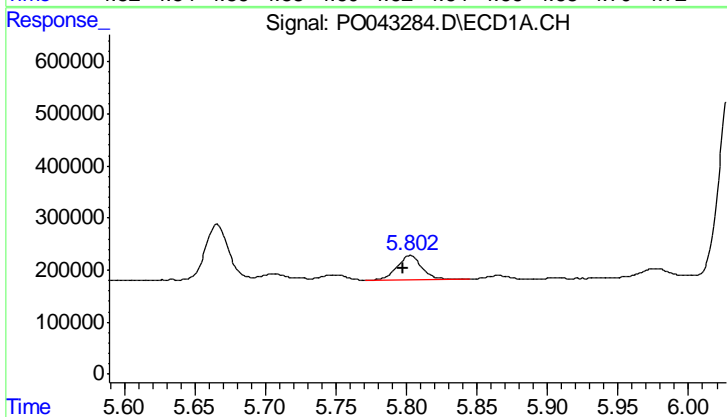


#19 AR-1242-4  
 R.T.: 5.666 min  
 Delta R.T.: 0.004 min  
 Response: 1226665  
 Conc: 294.09 ng/ml

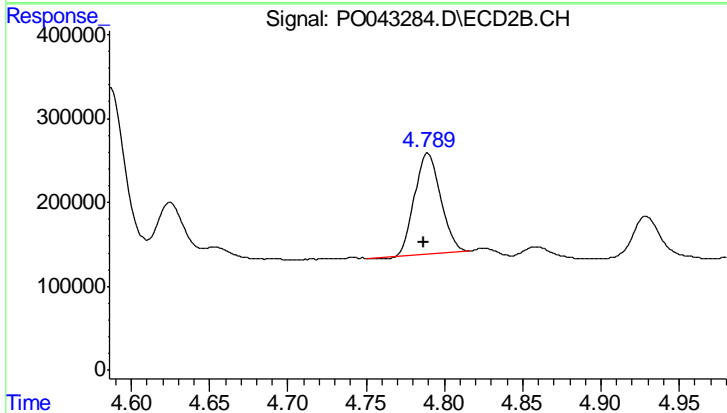
**Instrument :**  
 ECD\_O  
**ClientSampleId :**  
 SLAB-CONCRETE-ADL



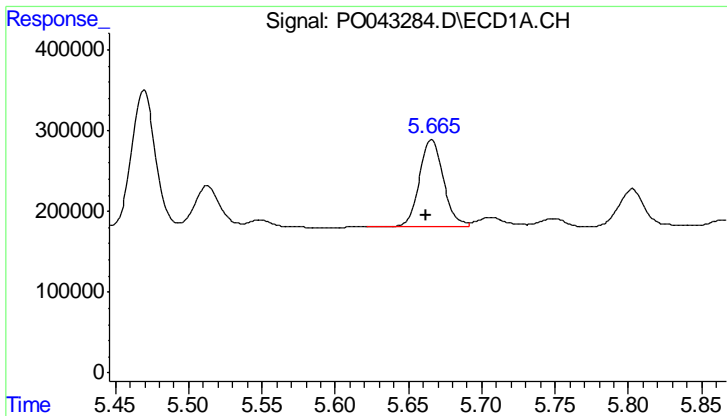
#19 AR-1242-4  
 R.T.: 4.625 min  
 Delta R.T.: 0.003 min  
 Response: 636036  
 Conc: 111.32 ng/ml



#20 AR-1242-5  
 R.T.: 5.803 min  
 Delta R.T.: 0.005 min  
 Response: 568468  
 Conc: 120.31 ng/ml



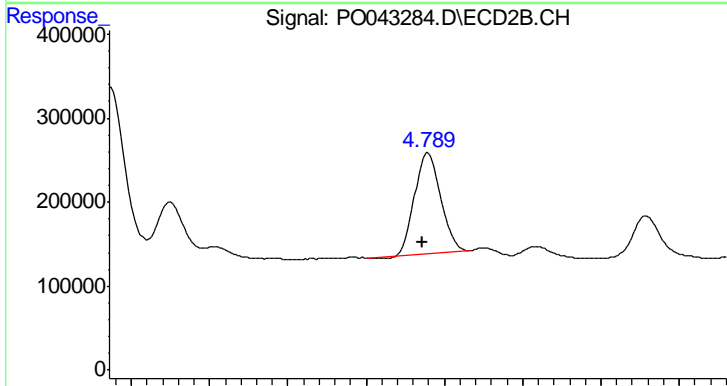
#20 AR-1242-5  
 R.T.: 4.789 min  
 Delta R.T.: 0.003 min  
 Response: 1368669  
 Conc: 220.38 ng/ml



#21 AR-1248-1

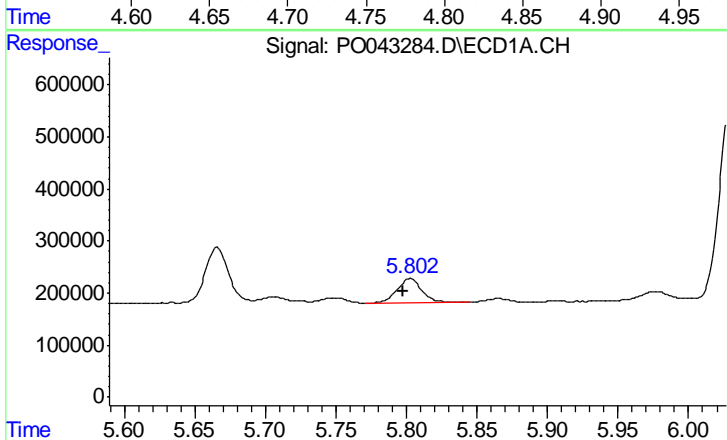
R.T.: 5.666 min  
 Delta R.T.: 0.004 min  
 Response: 1226665  
 Conc: 162.81 ng/ml

Instrument :  
 ECD\_O  
 ClientSampleId :  
 SLAB-CONCRETE-ADL



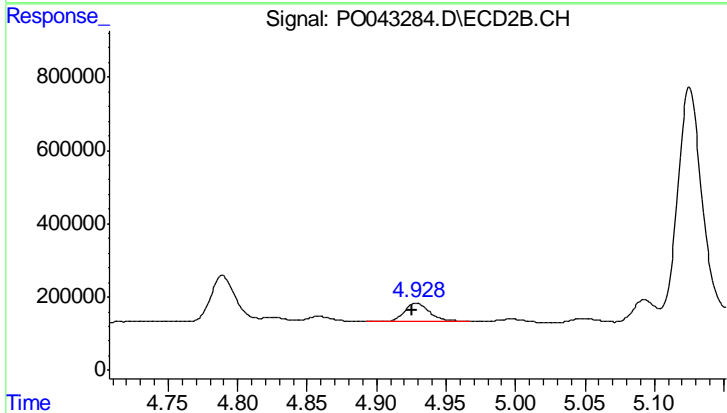
#21 AR-1248-1

R.T.: 4.789 min  
 Delta R.T.: 0.003 min  
 Response: 1368669  
 Conc: 120.86 ng/ml



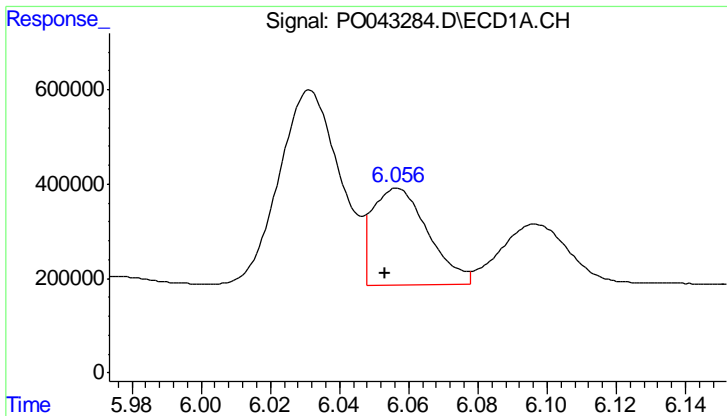
#22 AR-1248-2

R.T.: 5.803 min  
 Delta R.T.: 0.005 min  
 Response: 568468  
 Conc: 85.32 ng/ml



#22 AR-1248-2

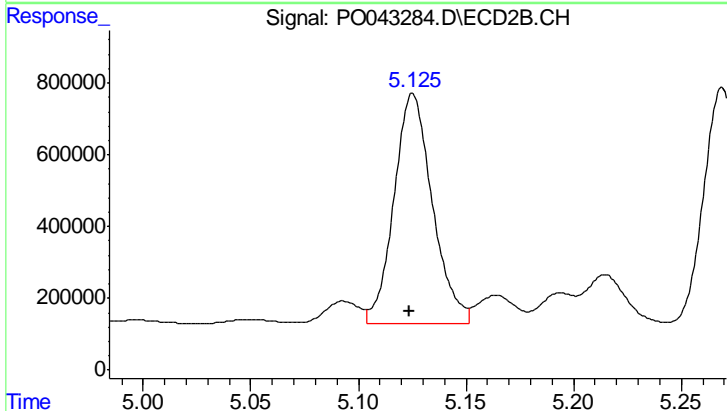
R.T.: 4.929 min  
 Delta R.T.: 0.003 min  
 Response: 651067  
 Conc: 59.40 ng/ml



#23 AR-1248-3

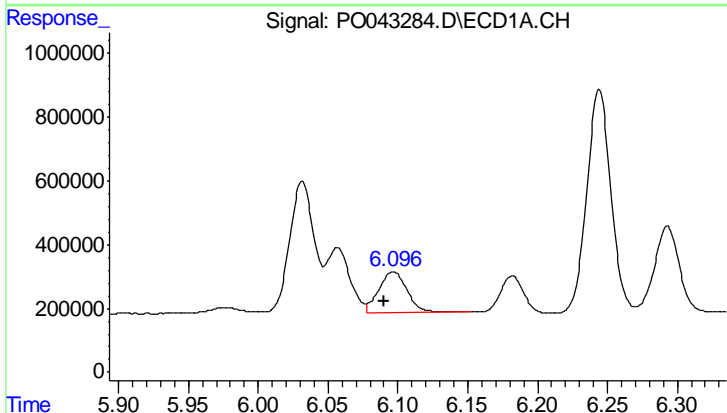
R.T.: 6.056 min  
 Delta R.T.: 0.003 min  
 Response: 2285515  
 Conc: 248.76 ng/ml

**Instrument :**  
 ECD\_O  
**ClientSampleId :**  
 SLAB-CONCRETE-ADL



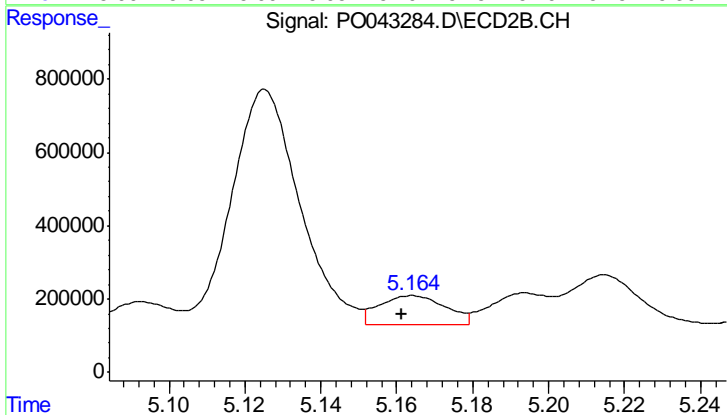
#23 AR-1248-3

R.T.: 5.125 min  
 Delta R.T.: 0.002 min  
 Response: 7970096  
 Conc: 456.77 ng/ml



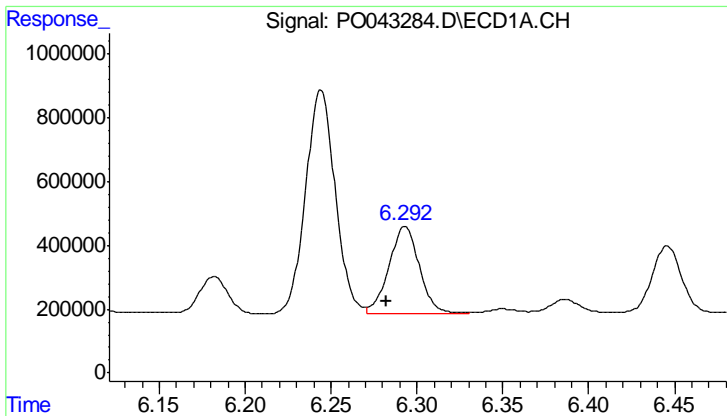
#24 AR-1248-4

R.T.: 6.097 min  
 Delta R.T.: 0.007 min  
 Response: 1810164  
 Conc: 195.98 ng/ml



#24 AR-1248-4

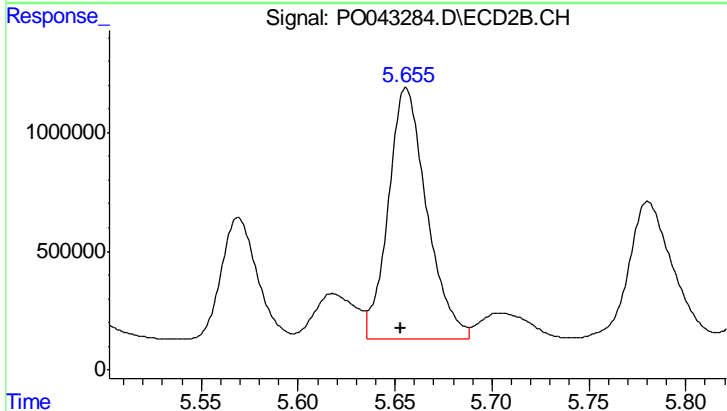
R.T.: 5.164 min  
 Delta R.T.: 0.003 min  
 Response: 958917  
 Conc: 67.35 ng/ml



#25 AR-1248-5

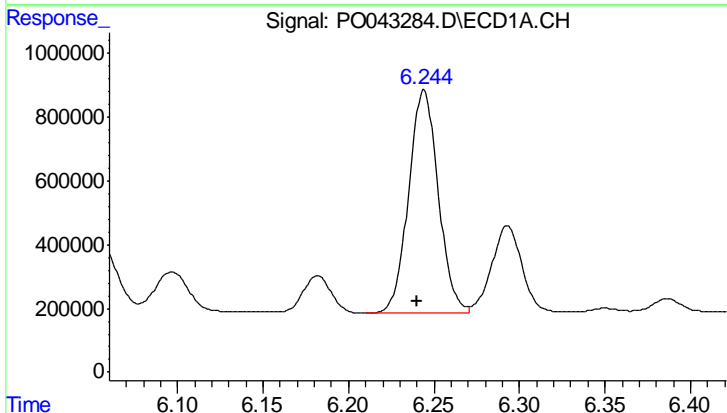
R.T.: 6.293 min  
 Delta R.T.: 0.011 min  
 Response: 3361979  
 Conc: 534.06 ng/ml

**Instrument :**  
 ECD\_O  
**ClientSampleId :**  
 SLAB-CONCRETE-ADL



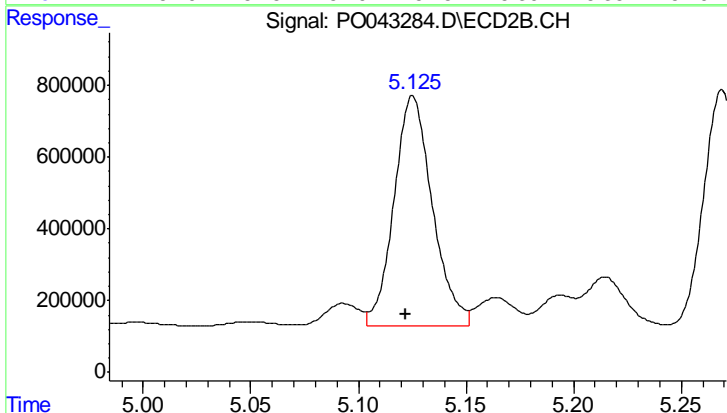
#25 AR-1248-5

R.T.: 5.656 min  
 Delta R.T.: 0.003 min  
 Response: 14666634  
 Conc: 1797.05 ng/ml



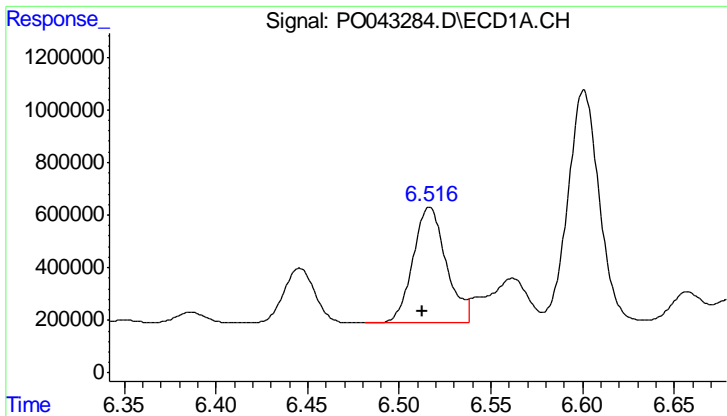
#26 AR-1254-1

R.T.: 6.244 min  
 Delta R.T.: 0.004 min  
 Response: 8412253  
 Conc: 528.34 ng/ml



#26 AR-1254-1

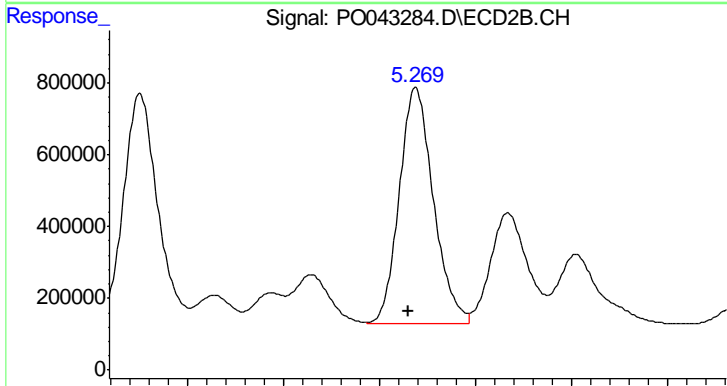
R.T.: 5.125 min  
 Delta R.T.: 0.003 min  
 Response: 7970096  
 Conc: 371.07 ng/ml



#27 AR-1254-2

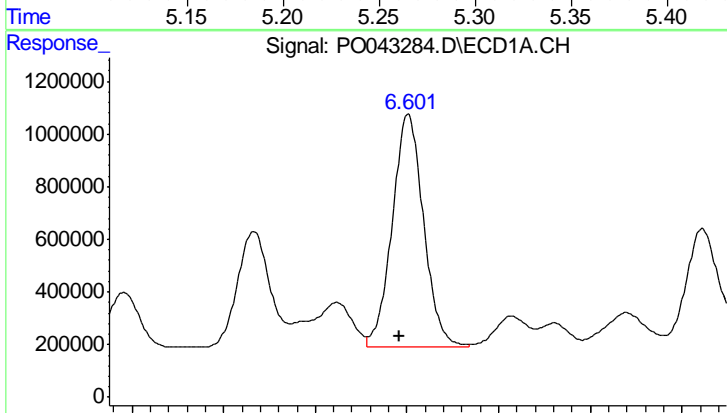
R.T.: 6.516 min  
 Delta R.T.: 0.004 min  
 Response: 5571368  
 Conc: 540.17 ng/ml

Instrument :  
 ECD\_O  
 ClientSampleId :  
 SLAB-CONCRETE-ADL



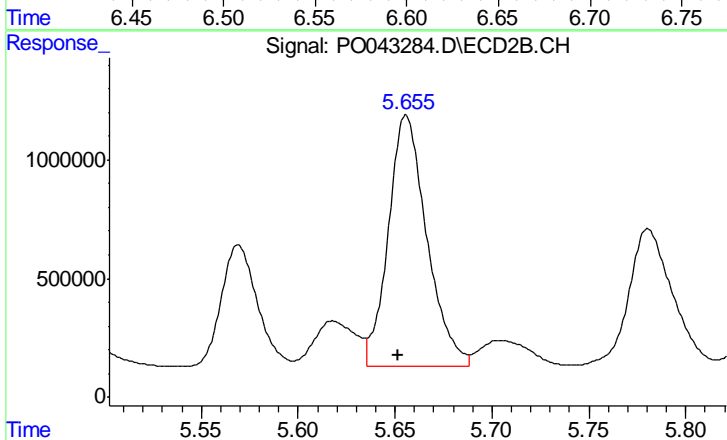
#27 AR-1254-2

R.T.: 5.269 min  
 Delta R.T.: 0.004 min  
 Response: 8126904  
 Conc: 421.80 ng/ml



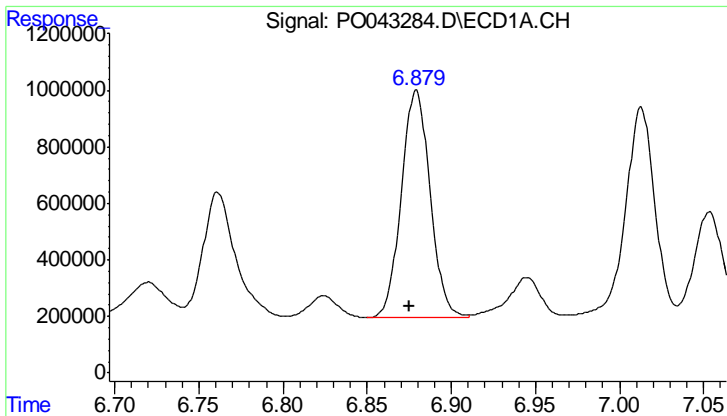
#28 AR-1254-3

R.T.: 6.601 min  
 Delta R.T.: 0.005 min  
 Response: 10537190  
 Conc: 584.41 ng/ml



#28 AR-1254-3

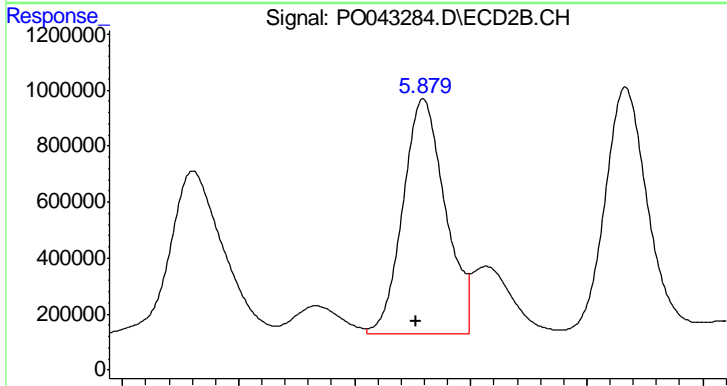
R.T.: 5.656 min  
 Delta R.T.: 0.004 min  
 Response: 14666634  
 Conc: 457.80 ng/ml



#29 AR-1254-4

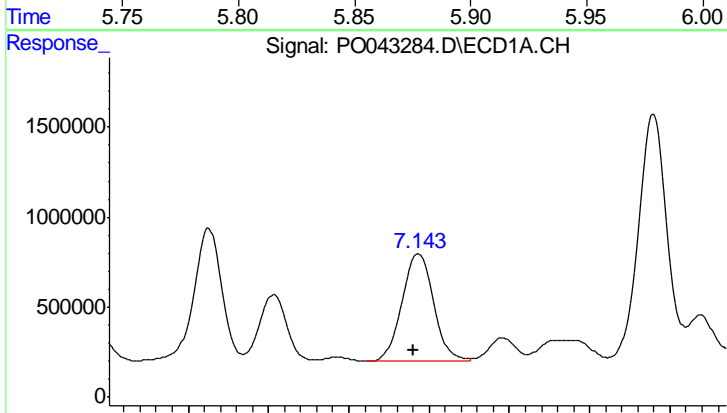
R.T.: 6.879 min  
 Delta R.T.: 0.004 min  
 Response: 9593431  
 Conc: 644.49 ng/ml

Instrument :  
 ECD\_O  
 ClientSampleId :  
 SLAB-CONCRETE-ADL



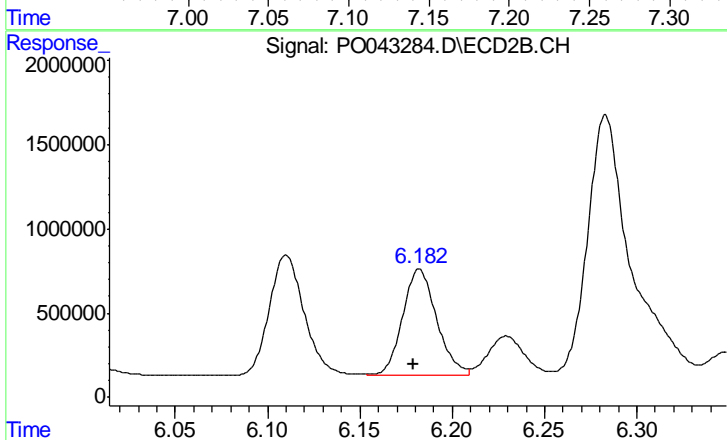
#29 AR-1254-4

R.T.: 5.880 min  
 Delta R.T.: 0.004 min  
 Response: 10664523  
 Conc: 402.30 ng/ml



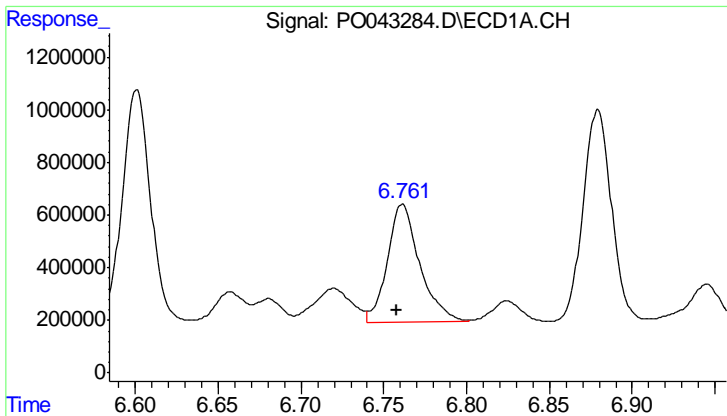
#30 AR-1254-5

R.T.: 7.143 min  
 Delta R.T.: 0.003 min  
 Response: 8190529  
 Conc: 751.83 ng/ml



#30 AR-1254-5

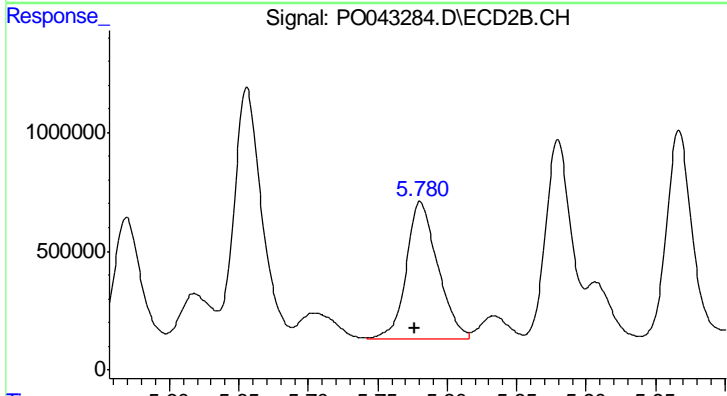
R.T.: 6.182 min  
 Delta R.T.: 0.003 min  
 Response: 8110485  
 Conc: 546.93 ng/ml



#31 AR-1260-1

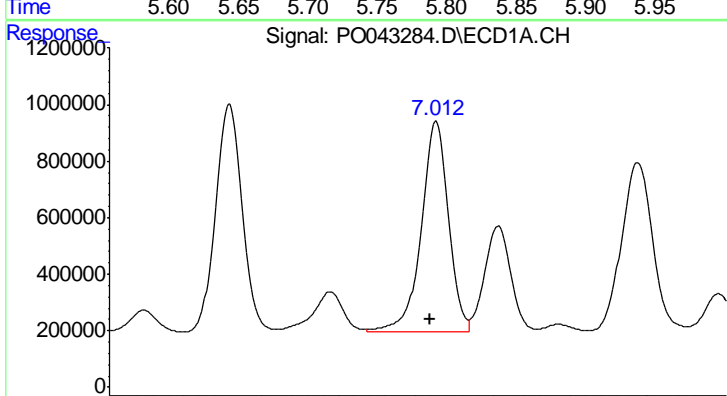
R.T.: 6.761 min  
 Delta R.T.: 0.004 min  
 Response: 6103455  
 Conc: 434.27 ng/ml

Instrument :  
 ECD\_O  
 ClientSampleId :  
 SLAB-CONCRETE-ADL



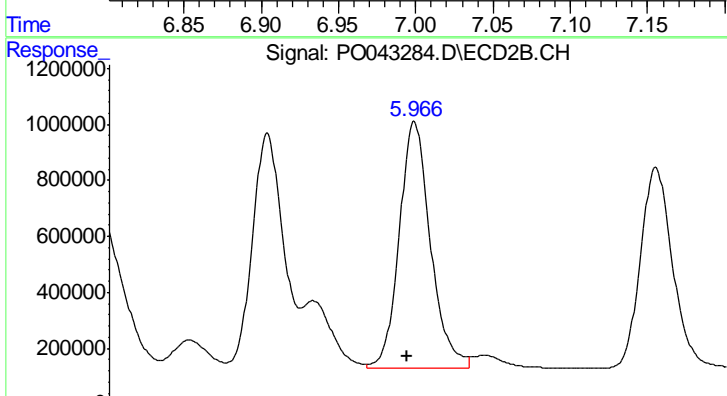
#31 AR-1260-1

R.T.: 5.781 min  
 Delta R.T.: 0.004 min  
 Response: 9154938  
 Conc: 408.56 ng/ml



#32 AR-1260-2

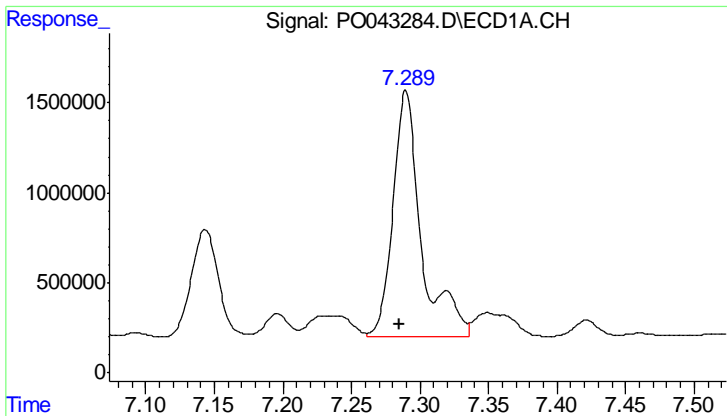
R.T.: 7.013 min  
 Delta R.T.: 0.004 min  
 Response: 9070352  
 Conc: 499.51 ng/ml



#32 AR-1260-2

R.T.: 5.967 min  
 Delta R.T.: 0.004 min  
 Response: 11308805  
 Conc: 349.90 ng/ml

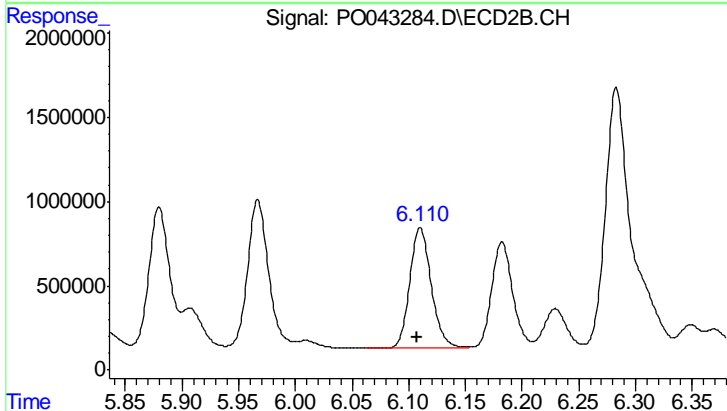




#33 AR-1260-3

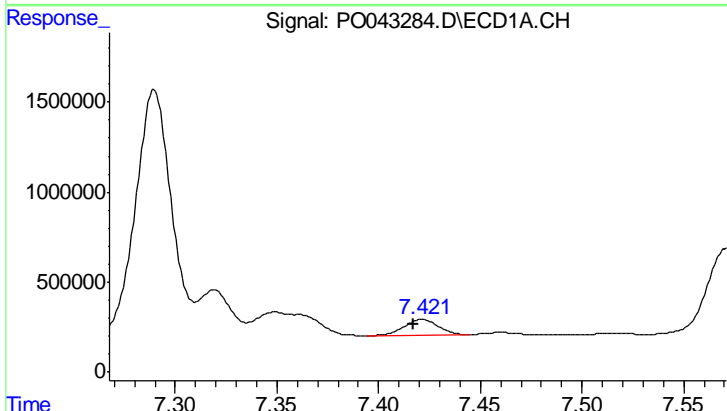
R.T.: 7.290 min  
 Delta R.T.: 0.005 min  
 Response: 19624178  
 Conc: 965.56 ng/ml

Instrument :  
 ECD\_O  
 ClientSampled :  
 SLAB-CONCRETE-ADL



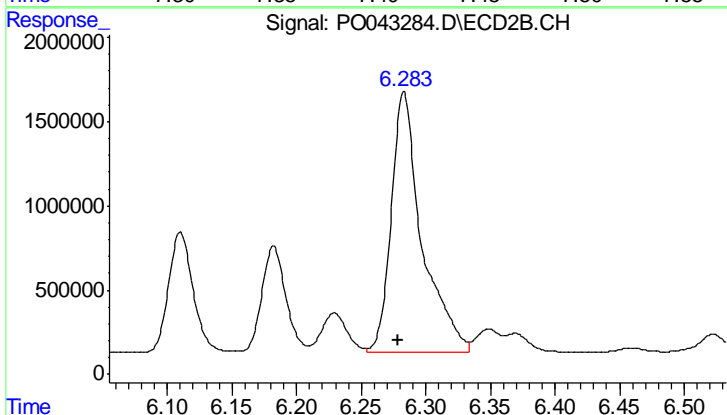
#33 AR-1260-3

R.T.: 6.110 min  
 Delta R.T.: 0.003 min  
 Response: 9395704  
 Conc: 358.04 ng/ml



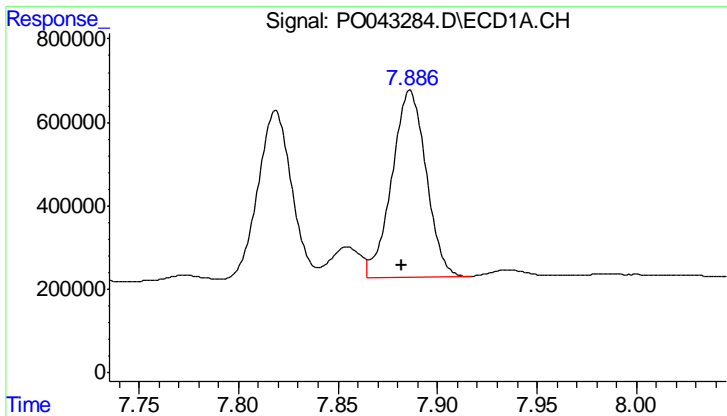
#34 AR-1260-4

R.T.: 7.422 min  
 Delta R.T.: 0.005 min  
 Response: 1026016  
 Conc: 139.95 ng/ml



#34 AR-1260-4

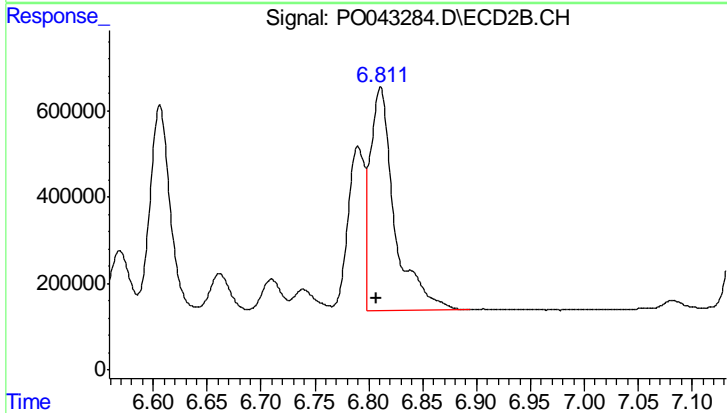
R.T.: 6.283 min  
 Delta R.T.: 0.005 min  
 Response: 25455829  
 Conc: 829.63 ng/ml



#35 AR-1260-5

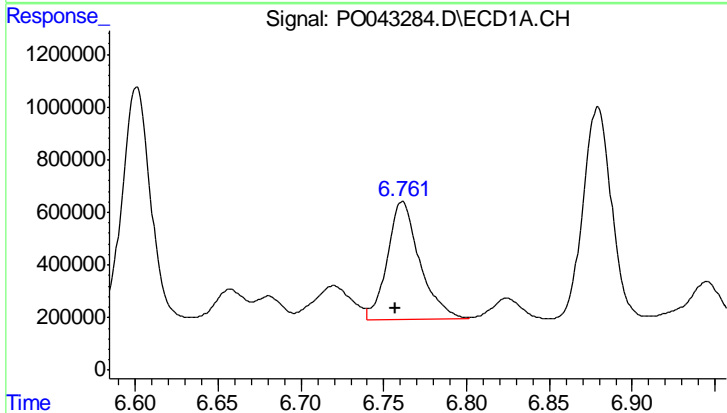
R.T.: 7.886 min  
 Delta R.T.: 0.004 min  
 Response: 5405773  
 Conc: 177.48 ng/ml

Instrument :  
 ECD\_O  
 ClientSampleId :  
 SLAB-CONCRETE-ADL



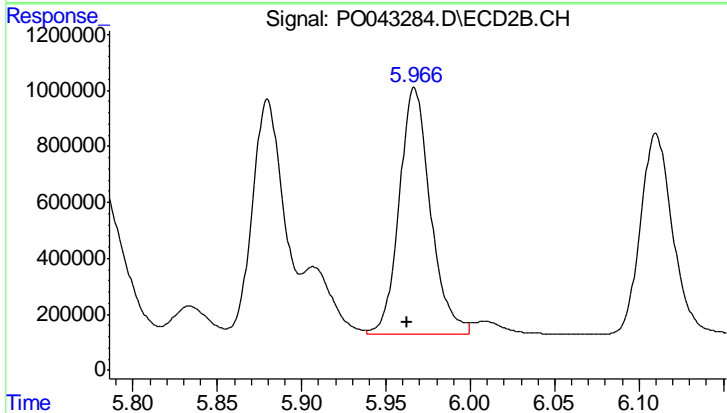
#35 AR-1260-5

R.T.: 6.811 min  
 Delta R.T.: 0.004 min  
 Response: 8150959  
 Conc: 140.03 ng/ml



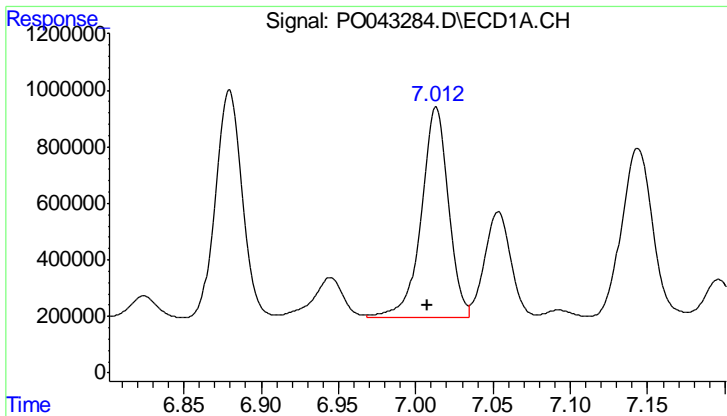
#36 AR-1262-1

R.T.: 6.761 min  
 Delta R.T.: 0.004 min  
 Response: 6103455  
 Conc: 574.22 ng/ml



#36 AR-1262-1

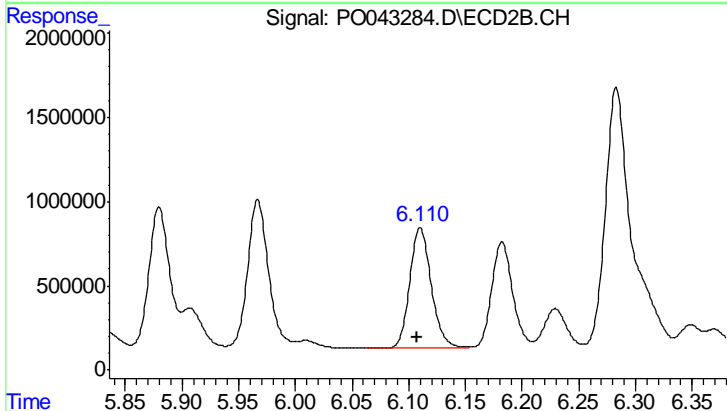
R.T.: 5.967 min  
 Delta R.T.: 0.004 min  
 Response: 11308805  
 Conc: 492.61 ng/ml



#37 AR-1262-2

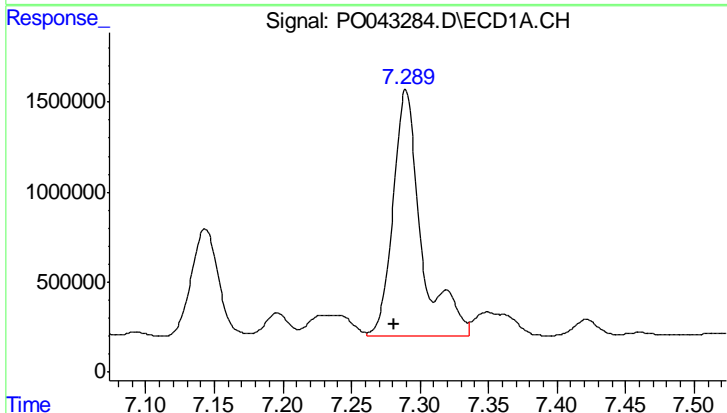
R.T.: 7.013 min  
 Delta R.T.: 0.005 min  
 Response: 9070352  
 Conc: 673.41 ng/ml

Instrument :  
 ECD\_O  
 ClientSampleId :  
 SLAB-CONCRETE-ADL



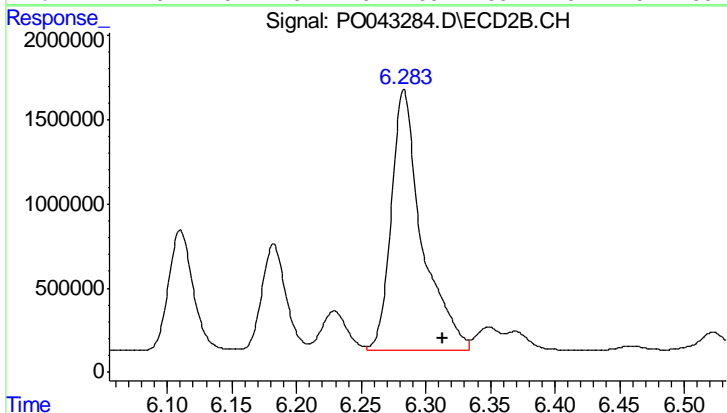
#37 AR-1262-2

R.T.: 6.110 min  
 Delta R.T.: 0.003 min  
 Response: 9395704  
 Conc: 449.37 ng/ml



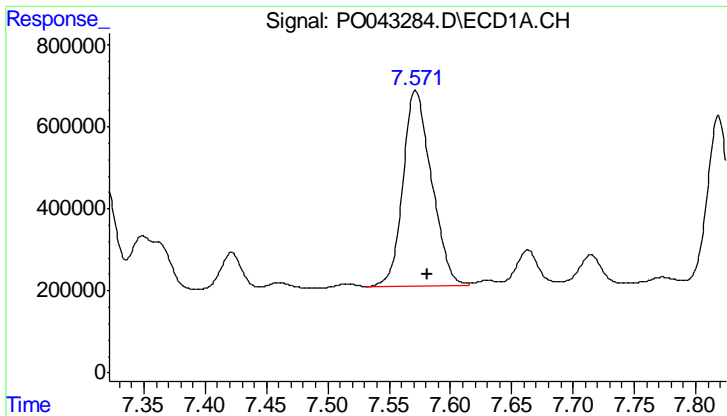
#38 AR-1262-3

R.T.: 7.290 min  
 Delta R.T.: 0.009 min  
 Response: 19624178  
 Conc: 1573.17 ng/ml



#38 AR-1262-3

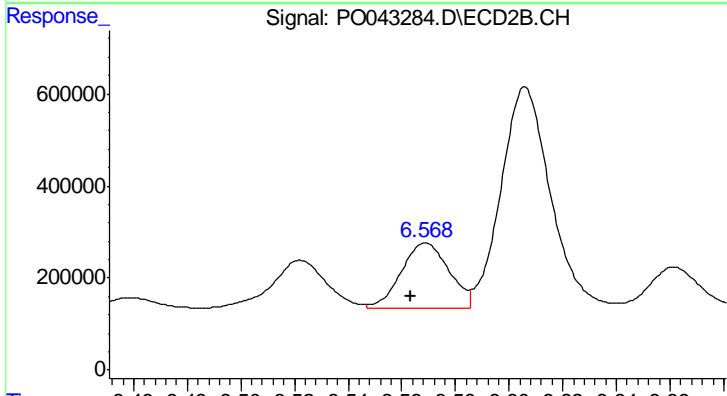
R.T.: 6.283 min  
 Delta R.T.: -0.030 min  
 Response: 25455829  
 Conc: 684.53 ng/ml



#39 AR-1262-4

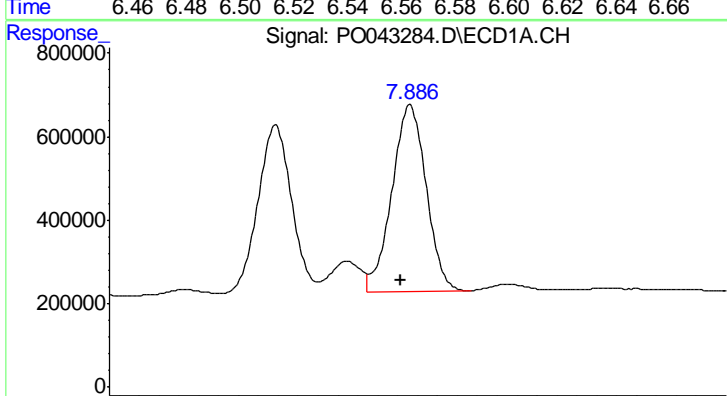
R.T.: 7.572 min  
 Delta R.T.: -0.010 min  
 Response: 7741058  
 Conc: 462.96 ng/ml

Instrument :  
 ECD\_O  
 ClientSampleId :  
 SLAB-CONCRETE-ADL



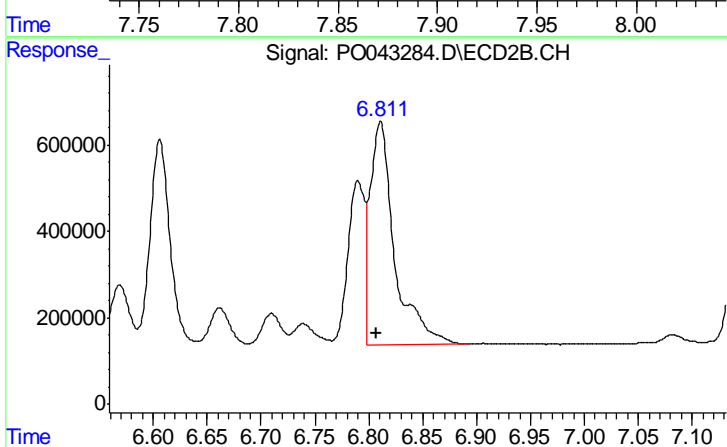
#39 AR-1262-4

R.T.: 6.569 min  
 Delta R.T.: 0.005 min  
 Response: 1735478  
 Conc: 60.01 ng/ml



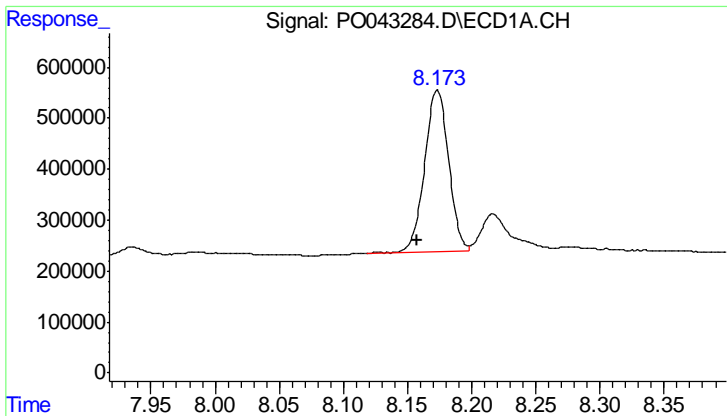
#40 AR-1262-5

R.T.: 7.886 min  
 Delta R.T.: 0.005 min  
 Response: 5405773  
 Conc: 158.87 ng/ml



#40 AR-1262-5

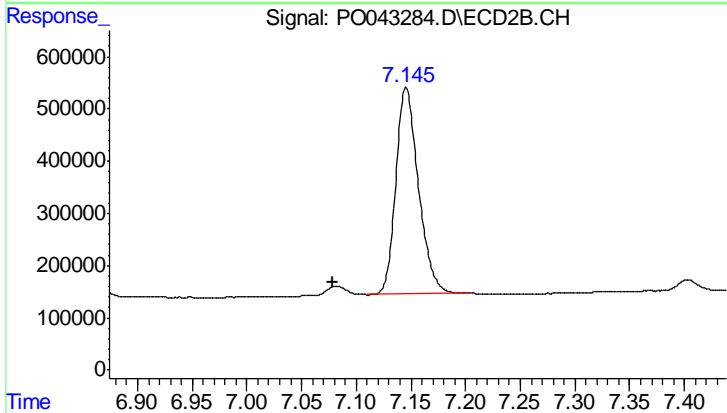
R.T.: 6.811 min  
 Delta R.T.: 0.003 min  
 Response: 8150959  
 Conc: 127.88 ng/ml



#41 AR-1268-1

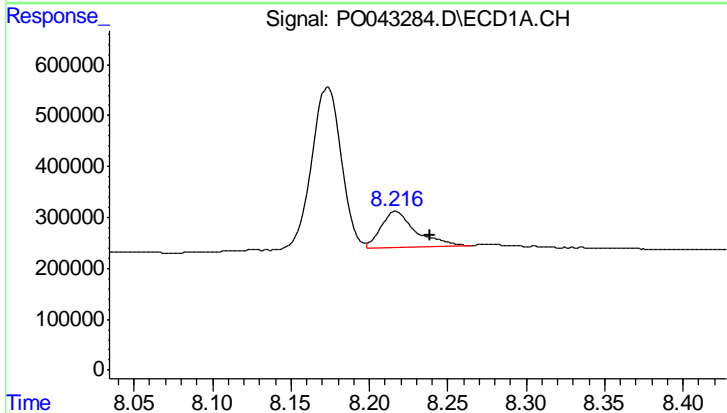
R.T.: 8.173 min  
 Delta R.T.: 0.016 min  
 Response: 4093743  
 Conc: 78.99 ng/ml

**Instrument :**  
 ECD\_O  
**ClientSampleId :**  
 SLAB-CONCRETE-ADL



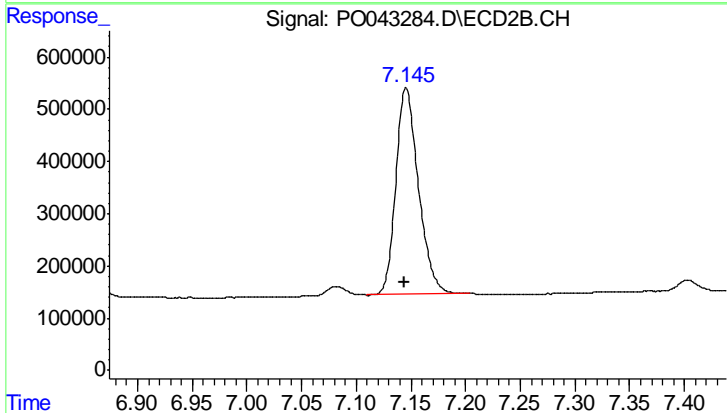
#41 AR-1268-1

R.T.: 7.145 min  
 Delta R.T.: 0.067 min  
 Response: 5693596  
 Conc: 59.15 ng/ml



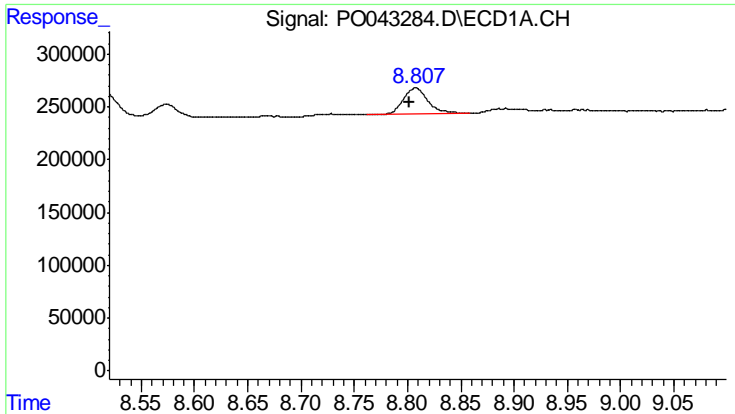
#42 AR-1268-2

R.T.: 8.217 min  
 Delta R.T.: -0.022 min  
 Response: 1056984  
 Conc: 22.78 ng/ml



#42 AR-1268-2

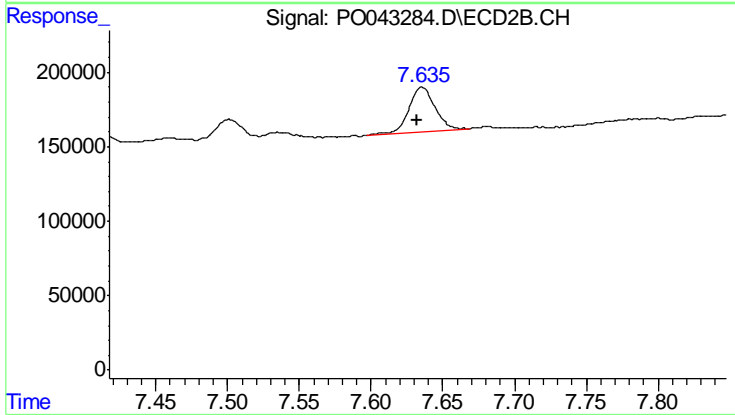
R.T.: 7.145 min  
 Delta R.T.: 0.000 min  
 Response: 5693596  
 Conc: 65.42 ng/ml



#44 AR-1268-4

R.T.: 8.807 min  
Delta R.T.: 0.005 min  
Response: 404109  
Conc: 23.87 ng/ml

Instrument :  
ECD\_O  
ClientSampleId :  
SLAB-CONCRETE-ADL



#44 AR-1268-4

R.T.: 7.635 min  
Delta R.T.: 0.004 min  
Response: 370854  
Conc: 12.57 ng/ml