

Data Path : Z:\pestpcbsrv\HPCHEM1\ECD_0\Data\P0032419\
 Data File : P0054545.D
 Signal(s) : Signal #1: ECD1A.CH Signal #2: ECD2B.CH
 Acq On : 24 Mar 2019 14:59
 Operator : SM/SJ
 Sample : K1900-03
 Misc :
 ALS Vial : 13 Sample Multiplier: 1

Instrument :
 ECD_0
 ClientSampleId :
 BPS1-TT-MW30411-20190312

Integration File signal 1: autoint1.e
 Integration File signal 2: autoint2.e
 Quant Time: Mar 25 05:30:15 2019
 Quant Method : Z:\pestpcbsrv\HPCHEM1\ECD_0\methods\P0032319.M
 Quant Title : GC EXTRACTABLES
 QLast Update : Mon Mar 25 05:05:57 2019
 Response via : Initial Calibration
 Integrator: ChemStation 6890 Scale Mode: Small noise peaks clipped

Volume Inj. : 2 µl
 Signal #1 Phase : ZB-MR1 Signal #2 Phase: ZB-MR2
 Signal #1 Info : 30Mx0.32mmx 0.50µ Signal #2 Info : 30M x 0.32mm x 0.25µm

Compound	RT#1	RT#2	Resp#1	Resp#2	ng/ml	ng/ml

System Monitoring Compounds						
1) SA Tetrachlo...	4.308	3.626	731071	668517	20.925	20.174
2) SA Decachlor...	9.930	8.610	682322	484610	14.511	14.576
Target Compounds						
3) L1 AR-1016-1	5.470	4.706	106097	98212	63.281	61.600
4) L1 AR-1016-2	5.502	4.726	390821	154383	168.462	72.380 #
5) L1 AR-1016-3	5.564	4.904	107079	341828	72.784	280.959 #
6) L1 AR-1016-4	5.648	4.942	377791	457152	311.326	464.162 #
7) L1 AR-1016-5	5.944	5.155	670173	625939	524.380	485.549
9) L2 AR-1221-2	0.000	3.925	0	11101	N.D.	35.308 #
10) L2 AR-1221-3	0.000	4.043	0	32537	N.D.	33.794 #
11) L3 AR-1232-1	0.000	4.043	0	32537	N.D.	43.140 #
12) L3 AR-1232-2	5.204	4.726	659252	154383	1439.521	183.604 #
13) L3 AR-1232-3	5.502	4.904	390821	341828	430.409	727.663 #
14) L3 AR-1232-4	5.648	4.981	377791	513350	811.475	1225.164 #
15) L3 AR-1232-5	5.741	5.155	525049	625939	1395.358	1336.546
16) L4 AR-1242-1	5.470	4.706	106097	98212	82.953	82.132
17) L4 AR-1242-2	5.502	4.726	390821	154383	221.635	96.845 #
18) L4 AR-1242-3	5.564	4.904	107079	341828	94.123	372.771 #
19) L4 AR-1242-4	5.648	4.981	377791	513350	404.971	563.184 #
20) L4 AR-1242-5	6.384	5.505	315175	324743	287.587	272.451
21) L5 AR-1248-1	5.470	4.706	106097	98212	80.164	82.694
22) L5 AR-1248-2	5.741	4.942	525049	457152	273.275	283.328
23) L5 AR-1248-3	5.944	4.981	670173	513350	315.592	307.736
24) L5 AR-1248-4	6.346	5.155	274618	625939	109.069	306.987 #
25) L5 AR-1248-5	6.384	5.546	315175	284579	130.924	142.790
26) L6 AR-1254-1	6.318	5.505	160810	324743	87.663	148.055 #
27) L6 AR-1254-2	6.541	5.651	270380	68897	93.524	35.400 #
28) L6 AR-1254-3	6.902	6.055	109939	92743	34.006	28.526
29) L6 AR-1254-4	0.000	6.281	0	11902	N.D.	5.877 #
31) L7 AR-1260-1	7.027	6.199	41195	40174	16.760	17.219
32) L7 AR-1260-2	0.000	6.358	0	17763	N.D.	6.228 #
38) L8 AR-1262-3	8.528	0.000	28062	0	6.028	N.D. #
39) L8 AR-1262-4	8.528	0.000	28062	0	7.998	N.D. #
40) L8 AR-1262-5	0.000	8.024	0	13123	N.D.	7.180 #
41) L9 AR-1268-1	8.528	0.000	28062	0	3.592	N.D. #
42) L9 AR-1268-2	8.528	0.000	28062	0	3.930	N.D. #
44) L9 AR-1268-4	0.000	8.024	0	13123	N.D.	6.488 #

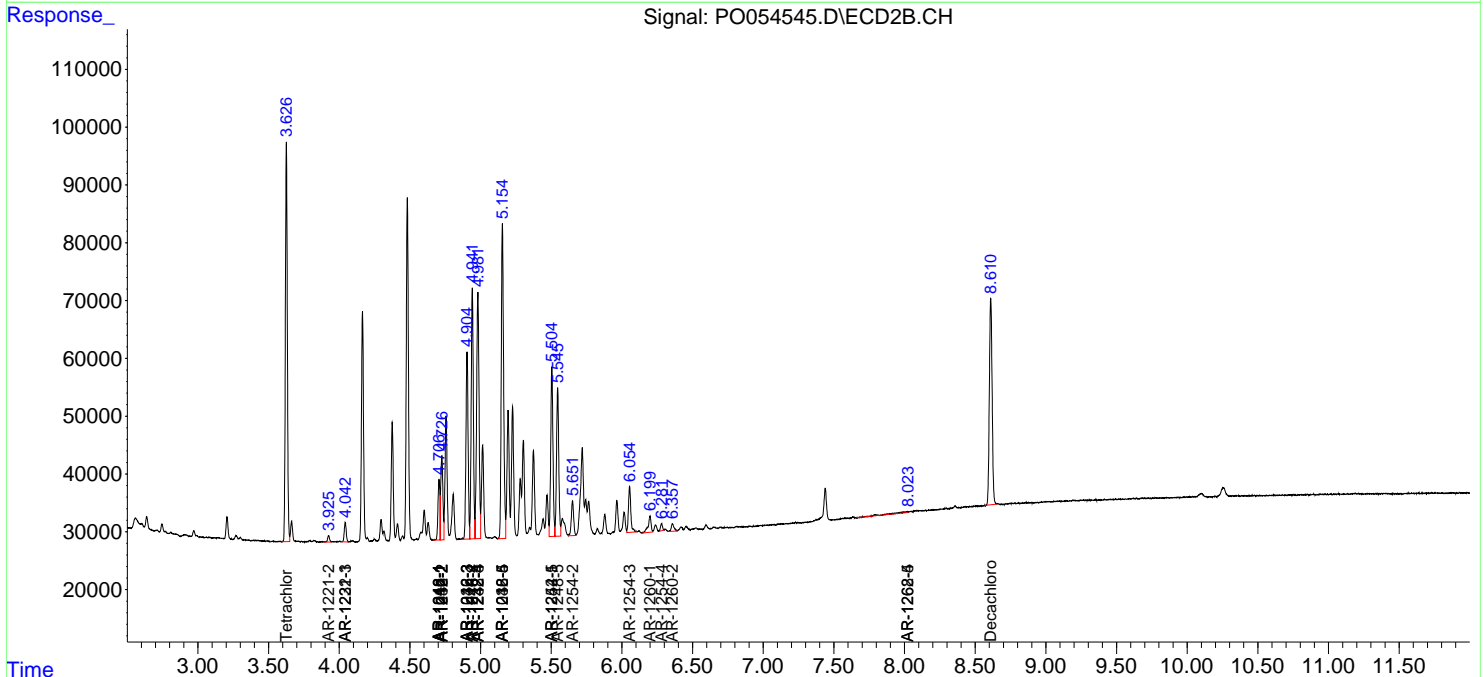
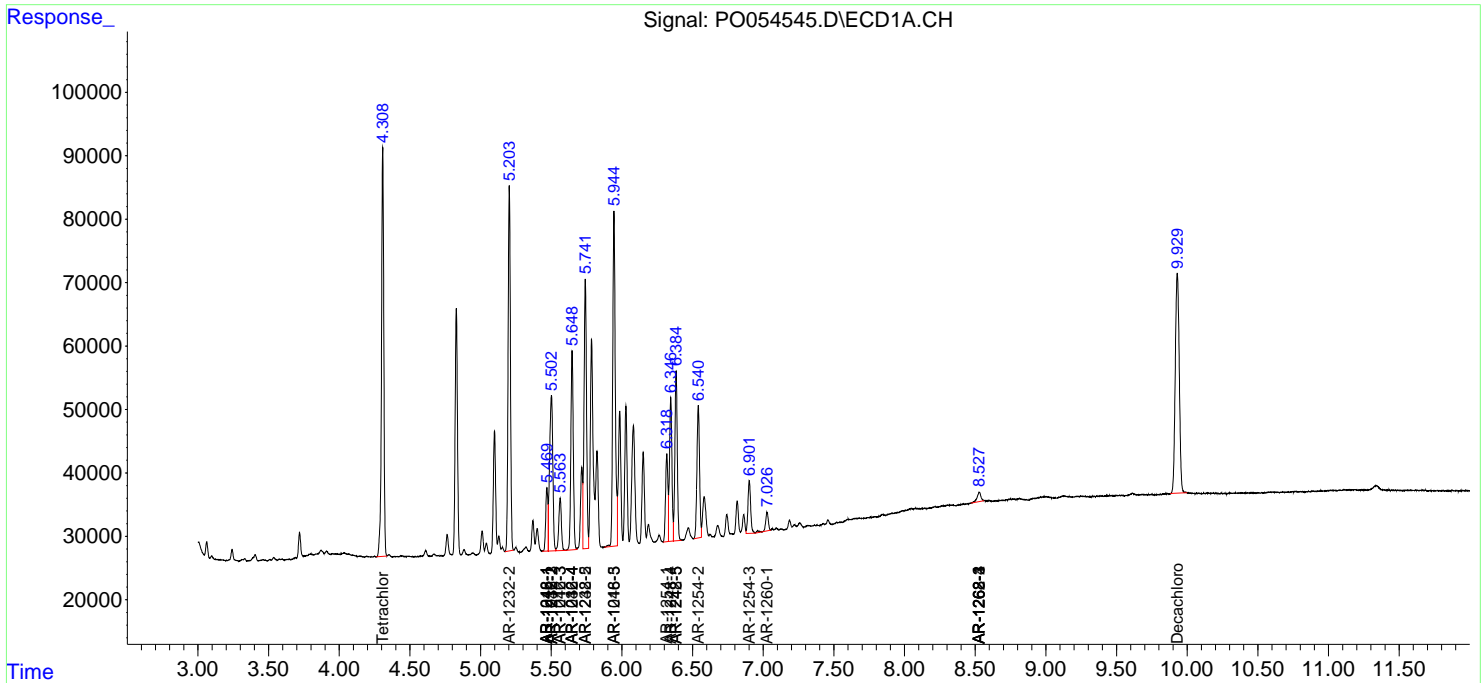
(f)=RT Delta > 1/2 Window (#)=Amounts differ by > 25% (m)=manual int.

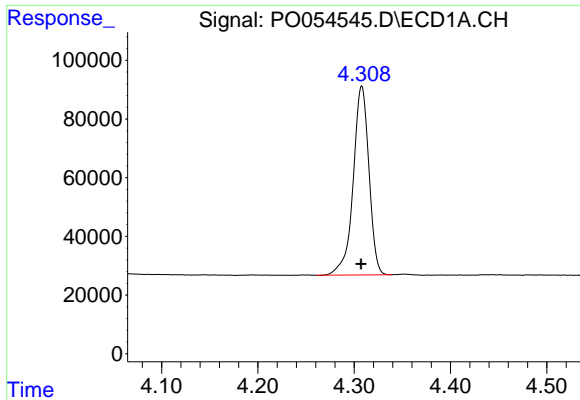
Data Path : Z:\pestpcbsrv\HPCHEM1\ECD_0\Data\P0032419\
 Data File : P0054545.D
 Signal(s) : Signal #1: ECD1A.CH Signal #2: ECD2B.CH
 Acq On : 24 Mar 2019 14:59
 Operator : SM/SJ
 Sample : K1900-03
 Misc :
 ALS Vial : 13 Sample Multiplier: 1

Instrument :
 ECD_O
 Client Sampled :
 BPS1-TT-MW30411-20190312

Integration File signal 1: autoint1.e
 Integration File signal 2: autoint2.e
 Quant Time: Mar 25 05:30:15 2019
 Quant Method : Z:\pestpcbsrv\HPCHEM1\ECD_0\methods\P0032319.M
 Quant Title : GC EXTRACTABLES
 QLast Update : Mon Mar 25 05:05:57 2019
 Response via : Initial Calibration
 Integrator: ChemStation 6890 Scale Mode: Small noise peaks clipped

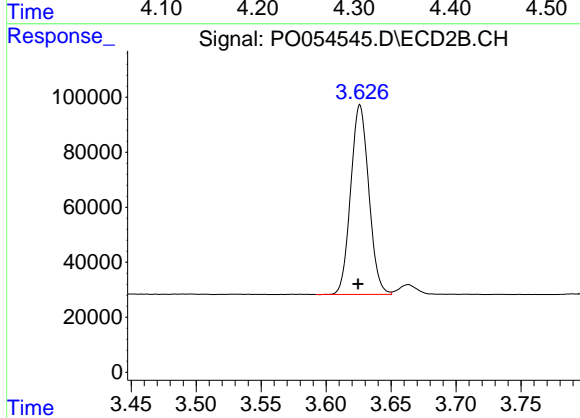
Volume Inj. : 2 µl
 Signal #1 Phase : ZB-MR1 Signal #2 Phase: ZB-MR2
 Signal #1 Info : 30Mx0.32mmx 0.50µ Signal #2 Info : 30M x 0.32mm x 0.25µm



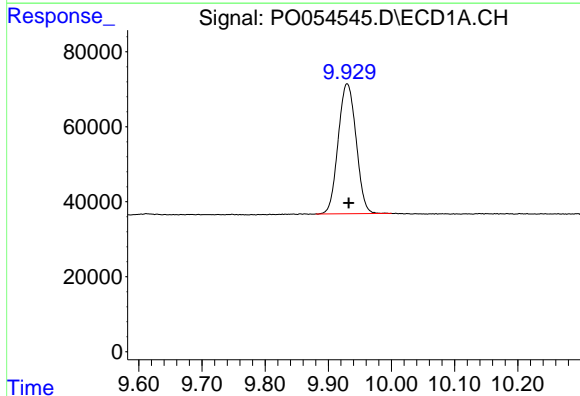


#1 Tetrachloro-m-xylene
 R.T.: 4.308 min
 Delta R.T.: 0.000 min
 Response: 731071
 Conc: 20.92 ng/ml

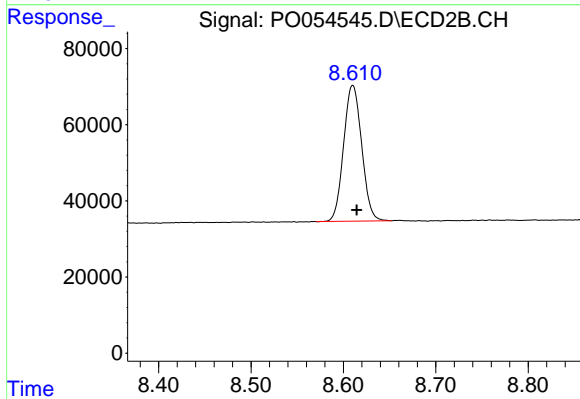
Instrument :
 ECD_O
 ClientSampleId :
 BPS1-TT-MW30411-20190312



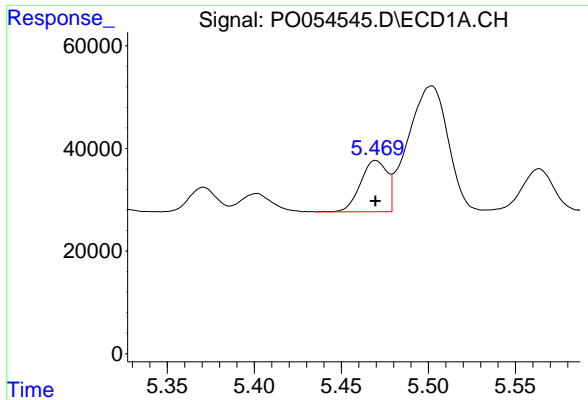
#1 Tetrachloro-m-xylene
 R.T.: 3.626 min
 Delta R.T.: 0.001 min
 Response: 668517
 Conc: 20.17 ng/ml



#2 Decachlorobiphenyl
 R.T.: 9.930 min
 Delta R.T.: -0.003 min
 Response: 682322
 Conc: 14.51 ng/ml

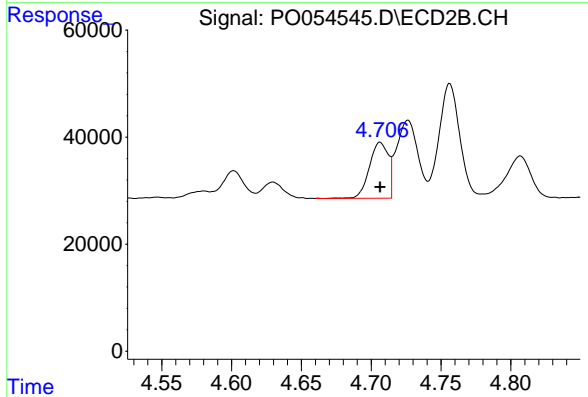


#2 Decachlorobiphenyl
 R.T.: 8.610 min
 Delta R.T.: -0.004 min
 Response: 484610
 Conc: 14.58 ng/ml

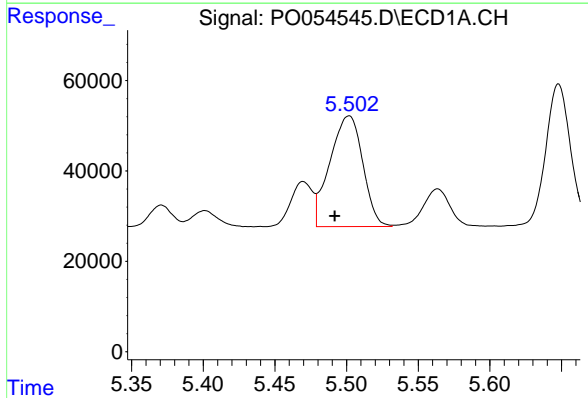


#3 AR-1016-1
 R.T.: 5.470 min
 Delta R.T.: 0.000 min
 Response: 106097
 Conc: 63.28 ng/ml

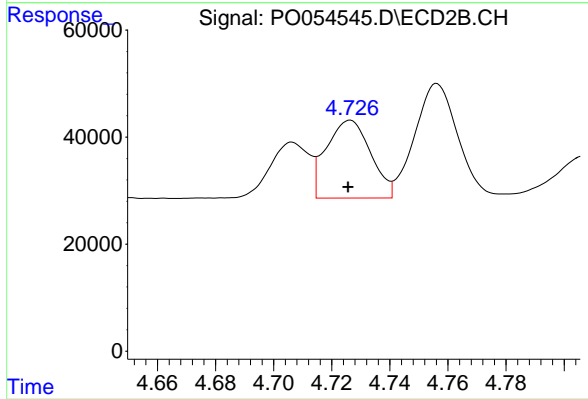
Instrument :
 ECD_O
 ClientSampleId :
 BPS1-TT-MW30411-20190312



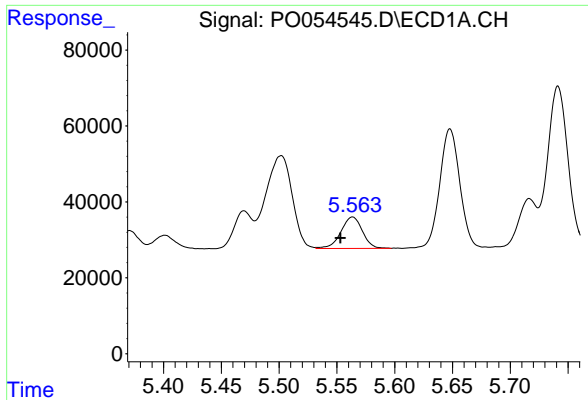
#3 AR-1016-1
 R.T.: 4.706 min
 Delta R.T.: 0.000 min
 Response: 98212
 Conc: 61.60 ng/ml



#4 AR-1016-2
 R.T.: 5.502 min
 Delta R.T.: 0.010 min
 Response: 390821
 Conc: 168.46 ng/ml

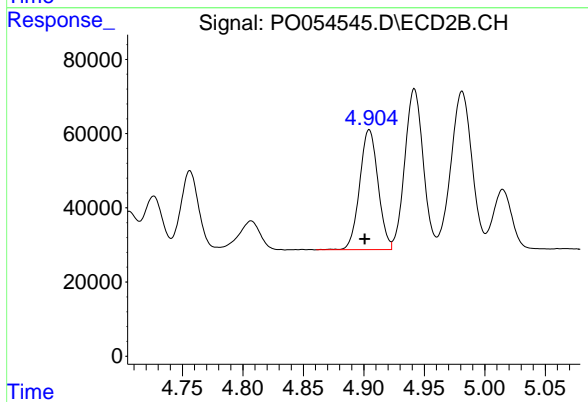


#4 AR-1016-2
 R.T.: 4.726 min
 Delta R.T.: 0.000 min
 Response: 154383
 Conc: 72.38 ng/ml

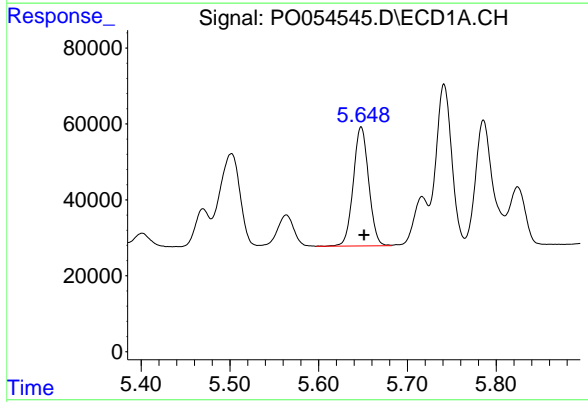


#5 AR-1016-3
 R.T.: 5.564 min
 Delta R.T.: 0.011 min
 Response: 107079
 Conc: 72.78 ng/ml

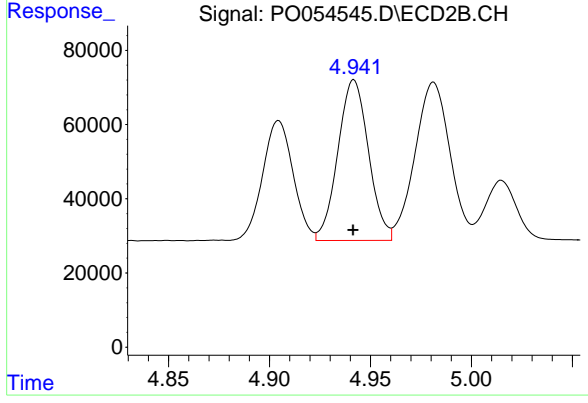
Instrument :
 ECD_O
ClientSampleId :
 BPS1-TT-MW30411-20190312



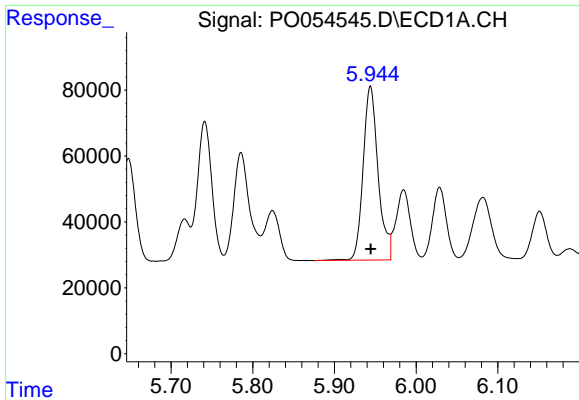
#5 AR-1016-3
 R.T.: 4.904 min
 Delta R.T.: 0.004 min
 Response: 341828
 Conc: 280.96 ng/ml



#6 AR-1016-4
 R.T.: 5.648 min
 Delta R.T.: -0.003 min
 Response: 377791
 Conc: 311.33 ng/ml



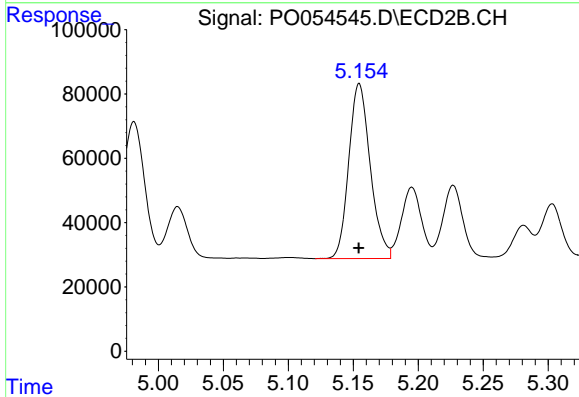
#6 AR-1016-4
 R.T.: 4.942 min
 Delta R.T.: 0.000 min
 Response: 457152
 Conc: 464.16 ng/ml



#7 AR-1016-5

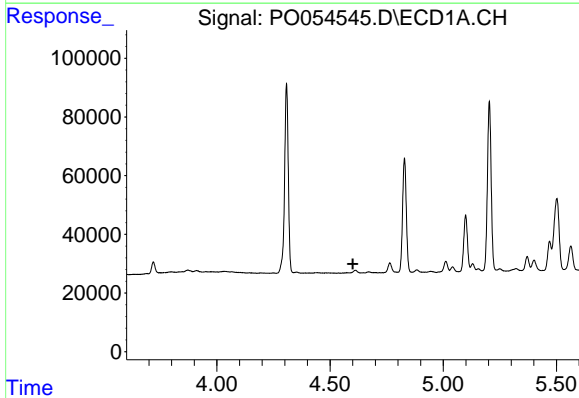
R.T.: 5.944 min
 Delta R.T.: 0.000 min
 Response: 670173
 Conc: 524.38 ng/ml

Instrument :
 ECD_O
ClientSampleId :
 BPS1-TT-MW30411-20190312



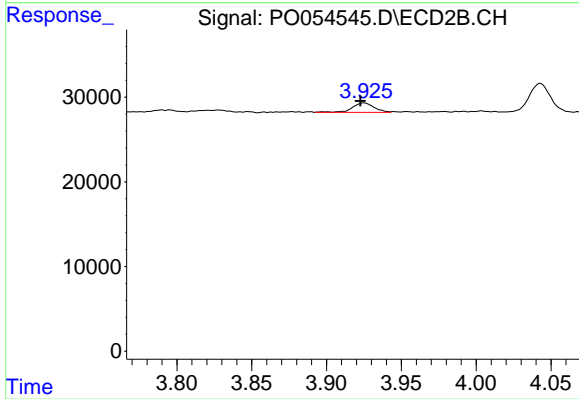
#7 AR-1016-5

R.T.: 5.155 min
 Delta R.T.: 0.000 min
 Response: 625939
 Conc: 485.55 ng/ml



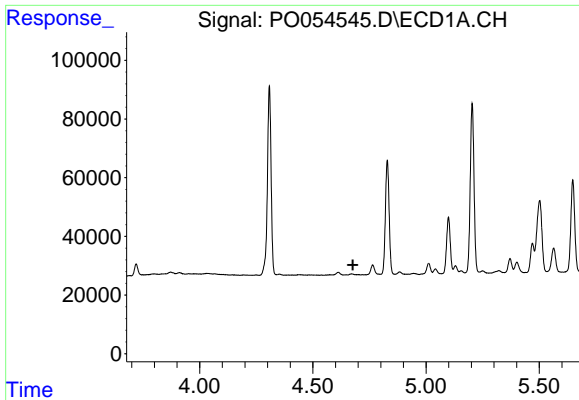
#9 AR-1221-2

R.T.: 0.000 min
 Exp R.T. : 4.601 min
 Response: 0
 Conc: N.D.



#9 AR-1221-2

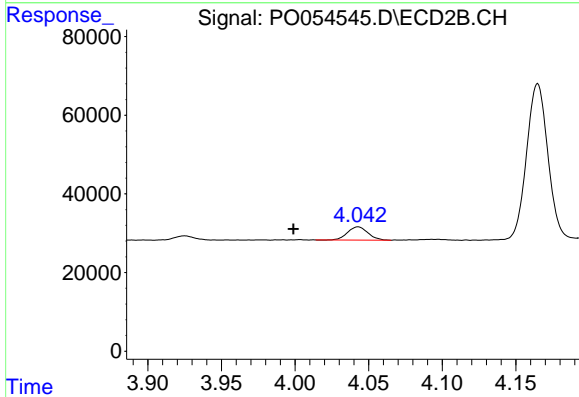
R.T.: 3.925 min
 Delta R.T.: 0.002 min
 Response: 11101
 Conc: 35.31 ng/ml



#10 AR-1221-3

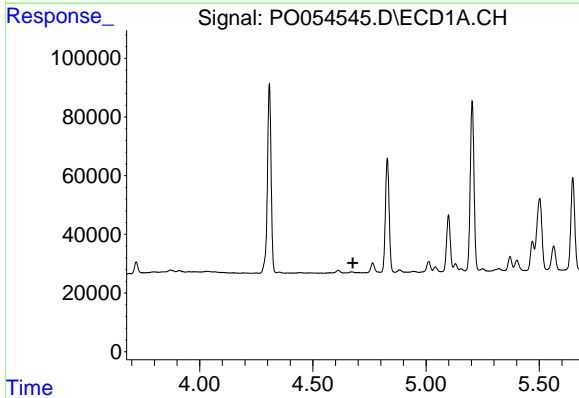
R.T.: 0.000 min
 Exp R.T.: 4.677 min
 Response: 0
 Conc: N.D.

Instrument :
 ECD_O
 ClientSampled :
 BPS1-TT-MW30411-20190312



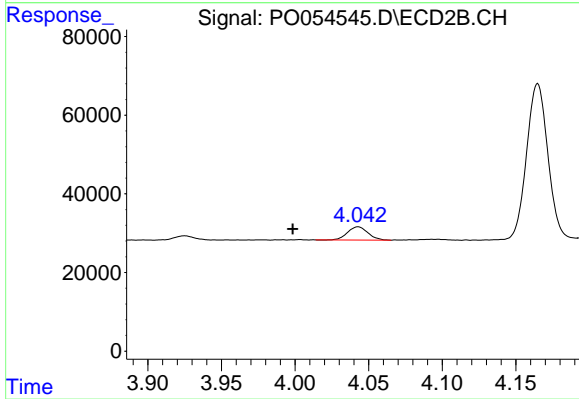
#10 AR-1221-3

R.T.: 4.043 min
 Delta R.T.: 0.044 min
 Response: 32537
 Conc: 33.79 ng/ml



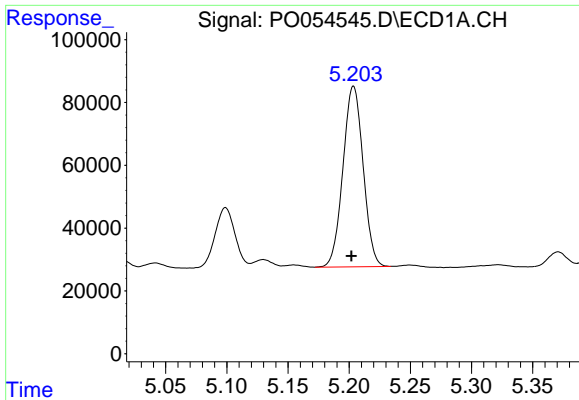
#11 AR-1232-1

R.T.: 0.000 min
 Exp R.T.: 4.676 min
 Response: 0
 Conc: N.D.



#11 AR-1232-1

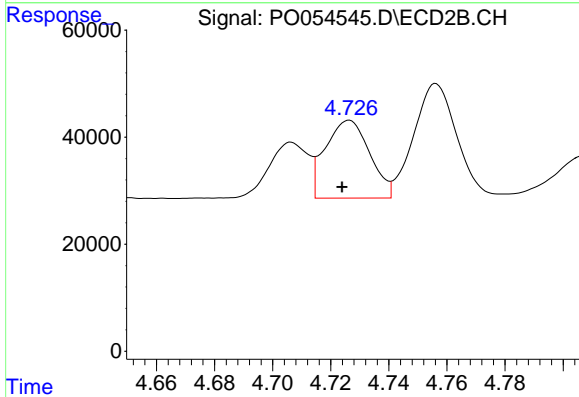
R.T.: 4.043 min
 Delta R.T.: 0.044 min
 Response: 32537
 Conc: 43.14 ng/ml



#12 AR-1232-2

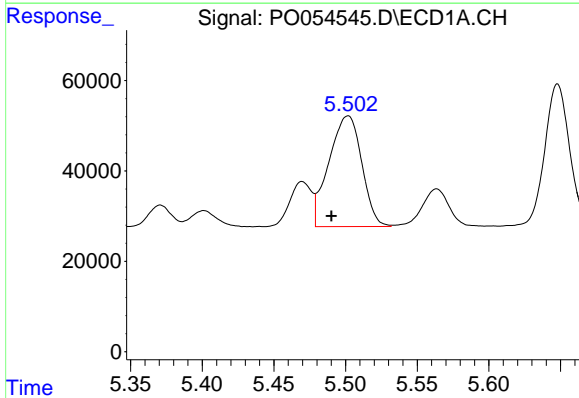
R.T.: 5.204 min
 Delta R.T.: 0.002 min
 Response: 659252
 Conc: 1439.52 ng/ml

Instrument :
 ECD_O
ClientSampleId :
 BPS1-TT-MW30411-20190312



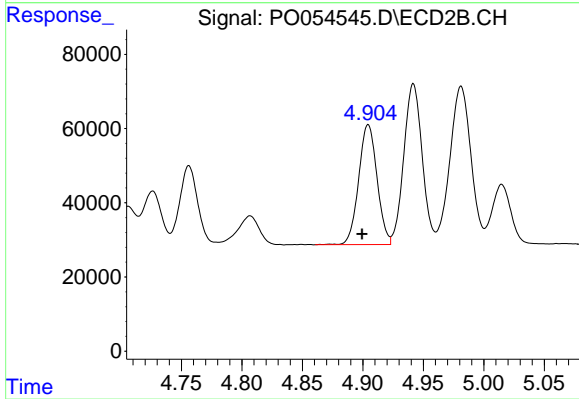
#12 AR-1232-2

R.T.: 4.726 min
 Delta R.T.: 0.002 min
 Response: 154383
 Conc: 183.60 ng/ml



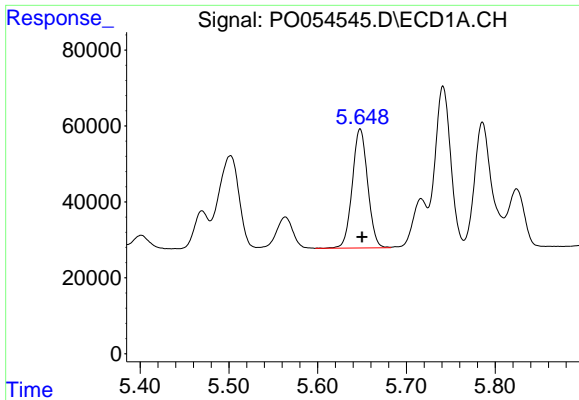
#13 AR-1232-3

R.T.: 5.502 min
 Delta R.T.: 0.012 min
 Response: 390821
 Conc: 430.41 ng/ml



#13 AR-1232-3

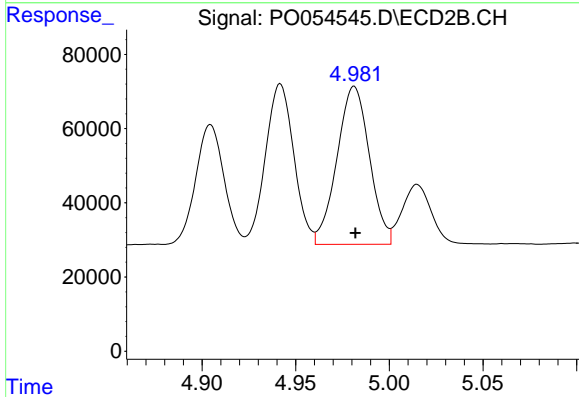
R.T.: 4.904 min
 Delta R.T.: 0.005 min
 Response: 341828
 Conc: 727.66 ng/ml



#14 AR-1232-4

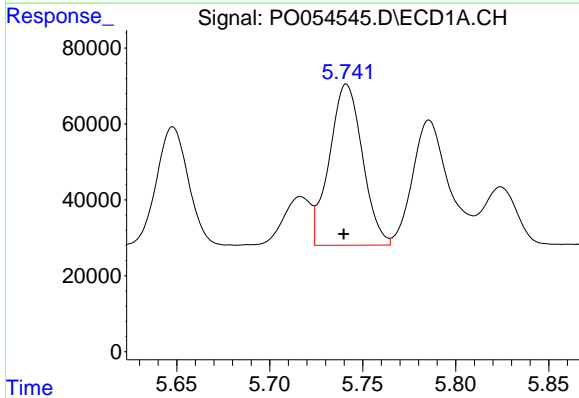
R.T.: 5.648 min
 Delta R.T.: -0.002 min
 Response: 377791
 Conc: 811.47 ng/ml

Instrument :
 ECD_O
 ClientSampleId :
 BPS1-TT-MW30411-20190312



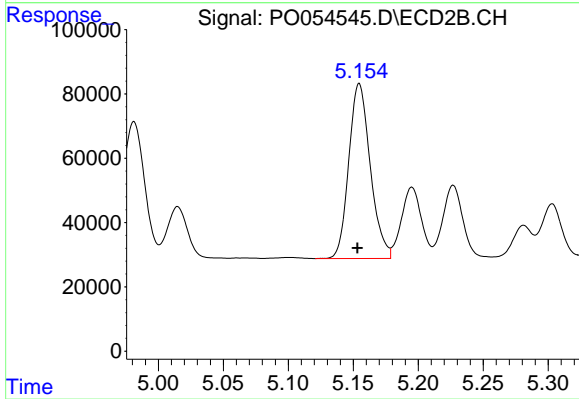
#14 AR-1232-4

R.T.: 4.981 min
 Delta R.T.: 0.000 min
 Response: 513350
 Conc: 1225.16 ng/ml



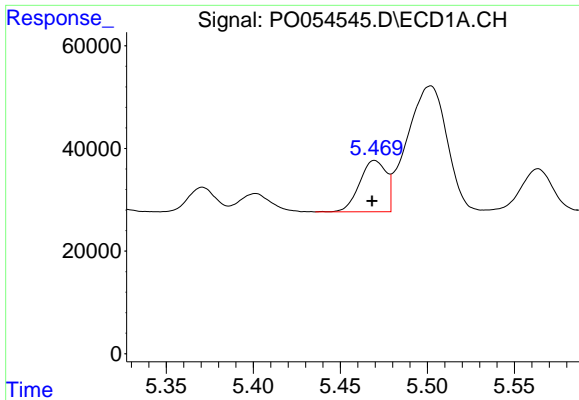
#15 AR-1232-5

R.T.: 5.741 min
 Delta R.T.: 0.002 min
 Response: 525049
 Conc: 1395.36 ng/ml



#15 AR-1232-5

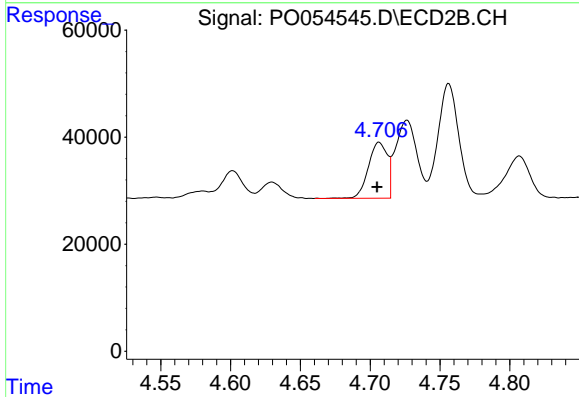
R.T.: 5.155 min
 Delta R.T.: 0.001 min
 Response: 625939
 Conc: 1336.55 ng/ml



#16 AR-1242-1

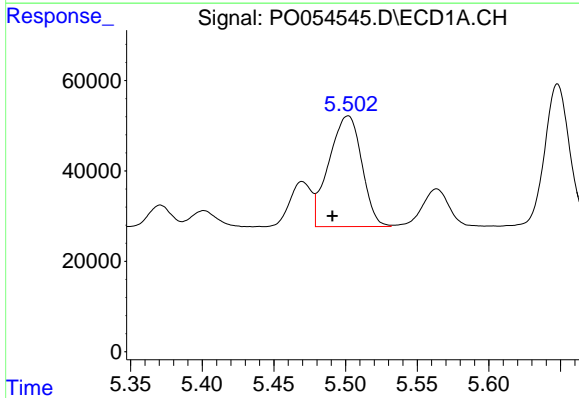
R.T.: 5.470 min
 Delta R.T.: 0.001 min
 Response: 106097
 Conc: 82.95 ng/ml

Instrument :
 ECD_O
ClientSampleId :
 BPS1-TT-MW30411-20190312



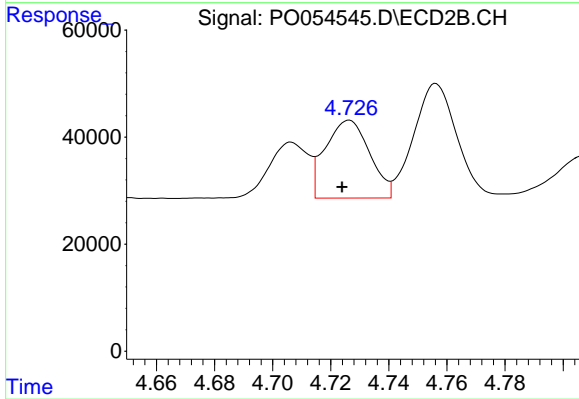
#16 AR-1242-1

R.T.: 4.706 min
 Delta R.T.: 0.001 min
 Response: 98212
 Conc: 82.13 ng/ml



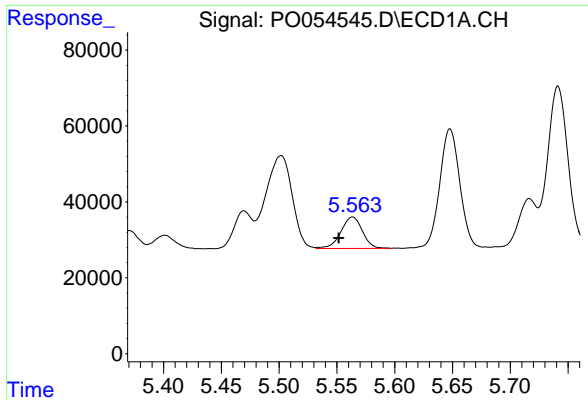
#17 AR-1242-2

R.T.: 5.502 min
 Delta R.T.: 0.011 min
 Response: 390821
 Conc: 221.63 ng/ml



#17 AR-1242-2

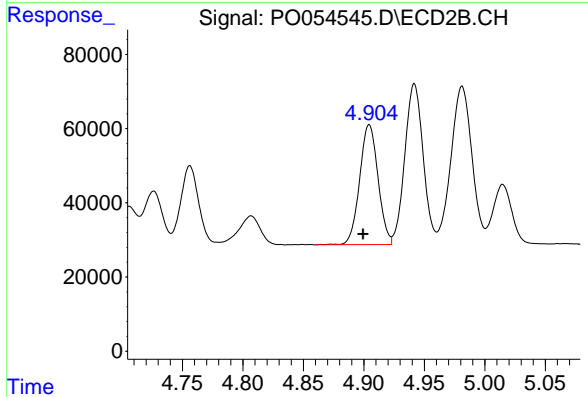
R.T.: 4.726 min
 Delta R.T.: 0.002 min
 Response: 154383
 Conc: 96.85 ng/ml



#18 AR-1242-3

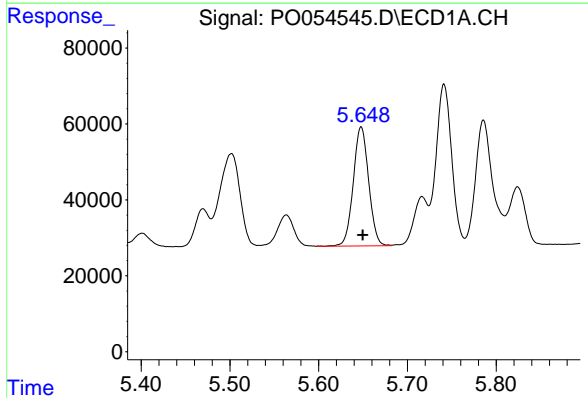
R.T.: 5.564 min
 Delta R.T.: 0.012 min
 Response: 107079
 Conc: 94.12 ng/ml

Instrument :
 ECD_O
 ClientSampleId :
 BPS1-TT-MW30411-20190312



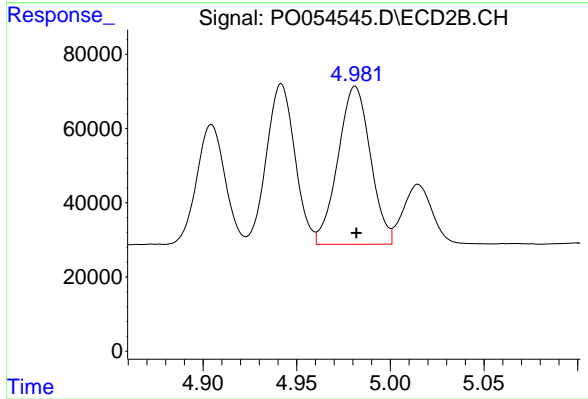
#18 AR-1242-3

R.T.: 4.904 min
 Delta R.T.: 0.005 min
 Response: 341828
 Conc: 372.77 ng/ml



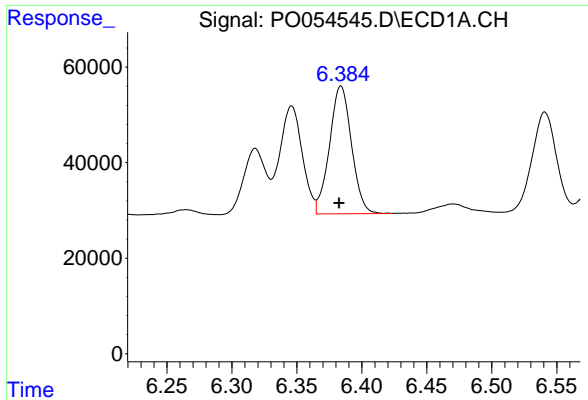
#19 AR-1242-4

R.T.: 5.648 min
 Delta R.T.: -0.002 min
 Response: 377791
 Conc: 404.97 ng/ml



#19 AR-1242-4

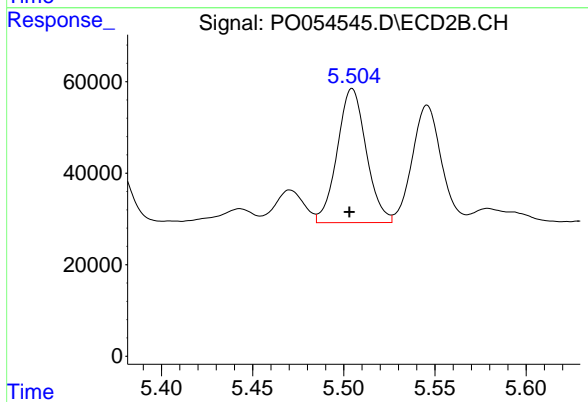
R.T.: 4.981 min
 Delta R.T.: 0.000 min
 Response: 513350
 Conc: 563.18 ng/ml



#20 AR-1242-5

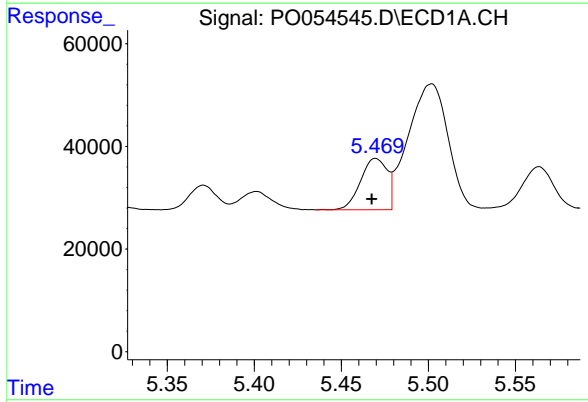
R.T.: 6.384 min
 Delta R.T.: 0.001 min
 Response: 315175
 Conc: 287.59 ng/ml

Instrument :
 ECD_O
 ClientSampleId :
 BPS1-TT-MW30411-20190312



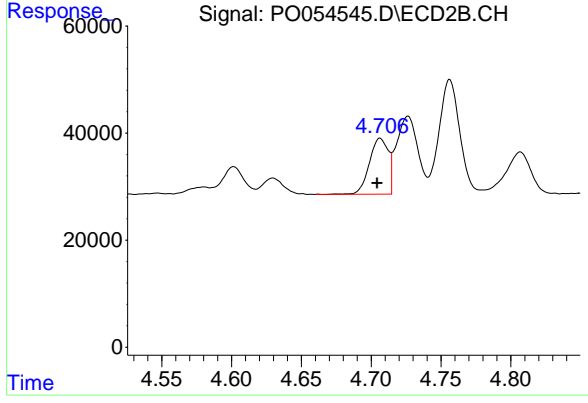
#20 AR-1242-5

R.T.: 5.505 min
 Delta R.T.: 0.001 min
 Response: 324743
 Conc: 272.45 ng/ml



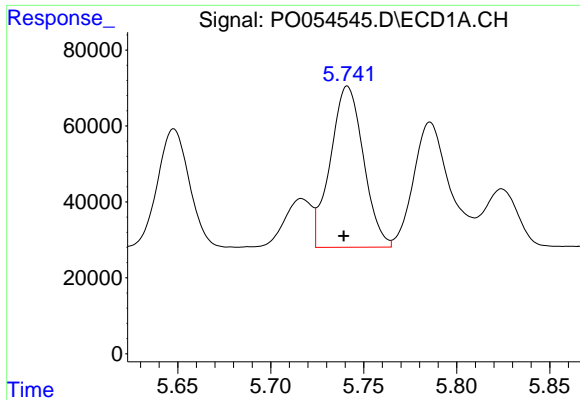
#21 AR-1248-1

R.T.: 5.470 min
 Delta R.T.: 0.002 min
 Response: 106097
 Conc: 80.16 ng/ml



#21 AR-1248-1

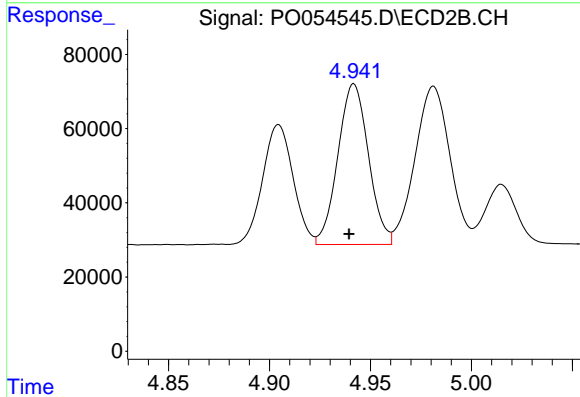
R.T.: 4.706 min
 Delta R.T.: 0.002 min
 Response: 98212
 Conc: 82.69 ng/ml



#22 AR-1248-2

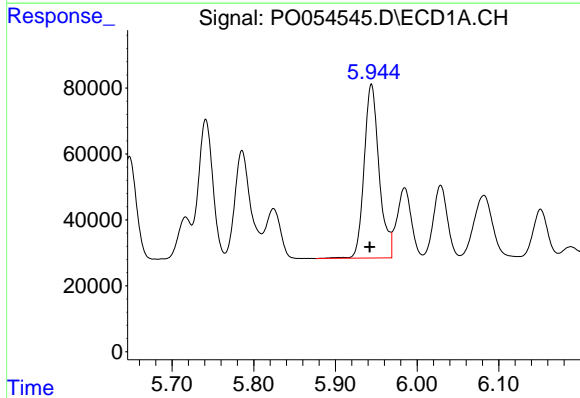
R.T.: 5.741 min
 Delta R.T.: 0.002 min
 Response: 525049
 Conc: 273.28 ng/ml

Instrument :
 ECD_O
 ClientSampleId :
 BPS1-TT-MW30411-20190312



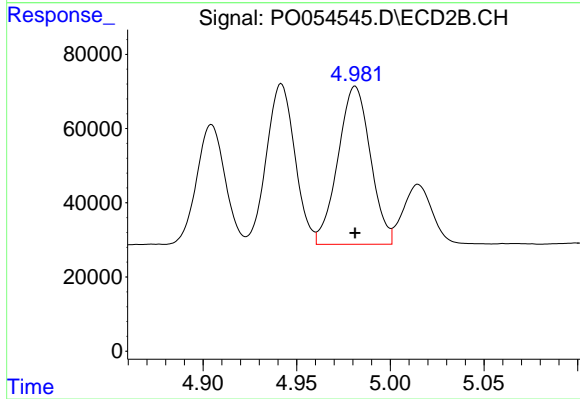
#22 AR-1248-2

R.T.: 4.942 min
 Delta R.T.: 0.002 min
 Response: 457152
 Conc: 283.33 ng/ml



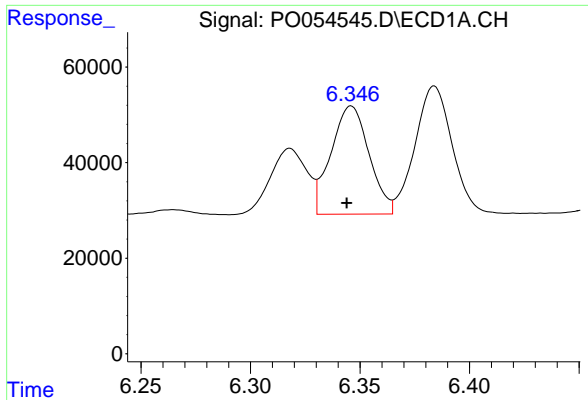
#23 AR-1248-3

R.T.: 5.944 min
 Delta R.T.: 0.002 min
 Response: 670173
 Conc: 315.59 ng/ml



#23 AR-1248-3

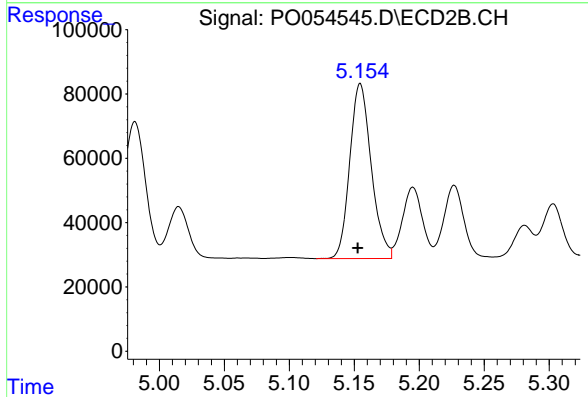
R.T.: 4.981 min
 Delta R.T.: 0.000 min
 Response: 513350
 Conc: 307.74 ng/ml



#24 AR-1248-4

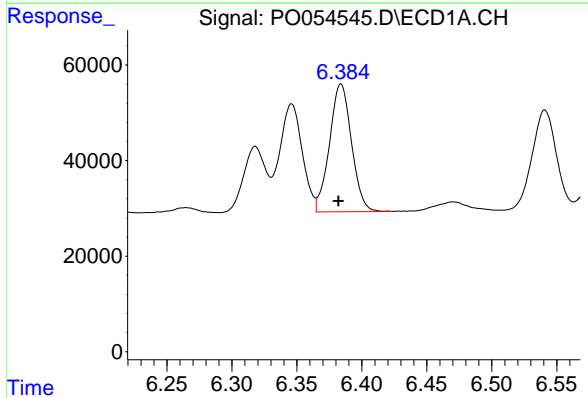
R.T.: 6.346 min
 Delta R.T.: 0.002 min
 Response: 274618
 Conc: 109.07 ng/ml

Instrument :
 ECD_O
ClientSampleId :
 BPS1-TT-MW30411-20190312



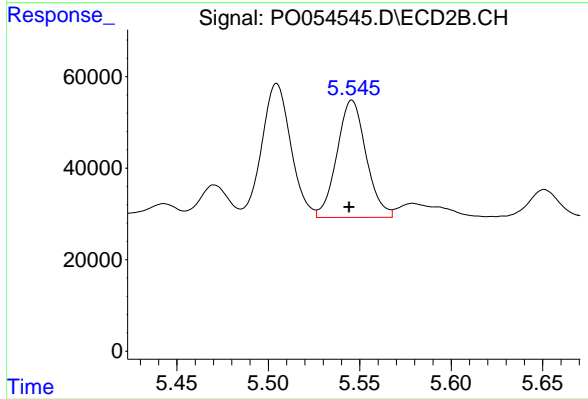
#24 AR-1248-4

R.T.: 5.155 min
 Delta R.T.: 0.002 min
 Response: 625939
 Conc: 306.99 ng/ml



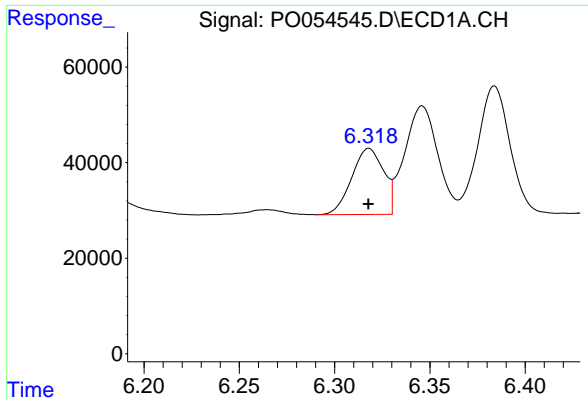
#25 AR-1248-5

R.T.: 6.384 min
 Delta R.T.: 0.002 min
 Response: 315175
 Conc: 130.92 ng/ml



#25 AR-1248-5

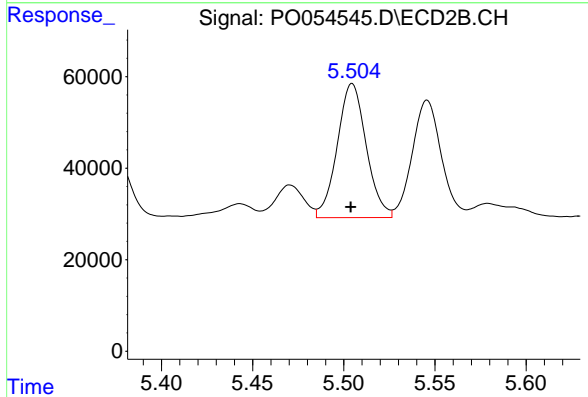
R.T.: 5.546 min
 Delta R.T.: 0.002 min
 Response: 284579
 Conc: 142.79 ng/ml



#26 AR-1254-1

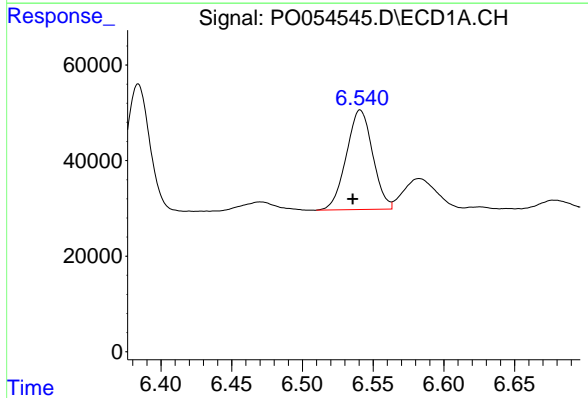
R.T.: 6.318 min
 Delta R.T.: 0.000 min
 Response: 160810
 Conc: 87.66 ng/ml

Instrument :
 ECD_O
 ClientSampleId :
 BPS1-TT-MW30411-20190312



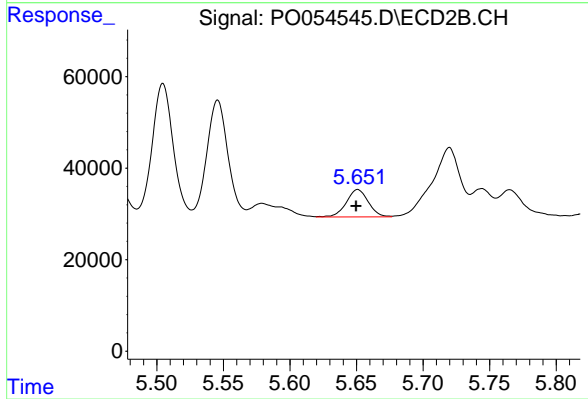
#26 AR-1254-1

R.T.: 5.505 min
 Delta R.T.: 0.000 min
 Response: 324743
 Conc: 148.06 ng/ml



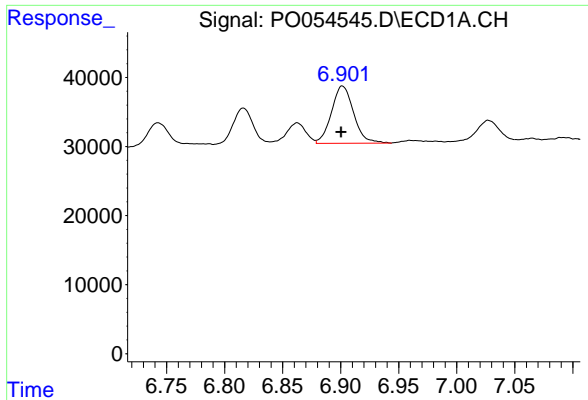
#27 AR-1254-2

R.T.: 6.541 min
 Delta R.T.: 0.005 min
 Response: 270380
 Conc: 93.52 ng/ml



#27 AR-1254-2

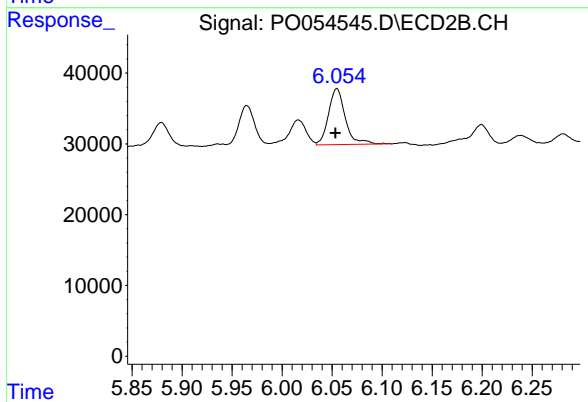
R.T.: 5.651 min
 Delta R.T.: 0.001 min
 Response: 68897
 Conc: 35.40 ng/ml



#28 AR-1254-3

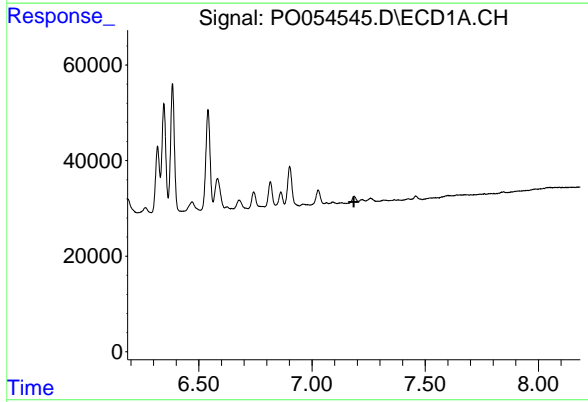
R.T.: 6.902 min
 Delta R.T.: 0.001 min
 Response: 109939
 Conc: 34.01 ng/ml

Instrument :
 ECD_O
 ClientSampleId :
 BPS1-TT-MW30411-20190312



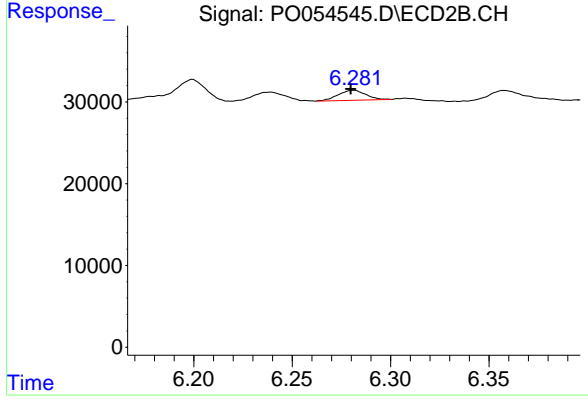
#28 AR-1254-3

R.T.: 6.055 min
 Delta R.T.: 0.001 min
 Response: 92743
 Conc: 28.53 ng/ml



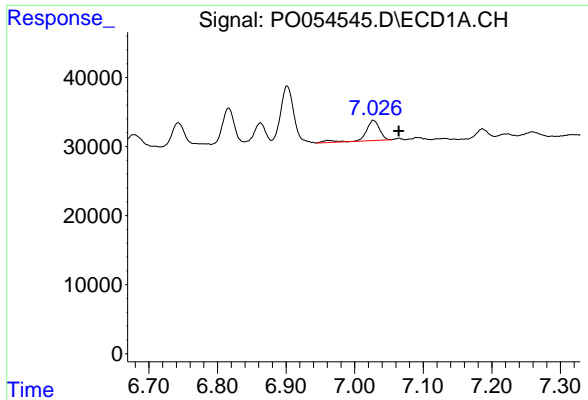
#29 AR-1254-4

R.T.: 0.000 min
 Exp R.T. : 7.185 min
 Response: 0
 Conc: N.D.



#29 AR-1254-4

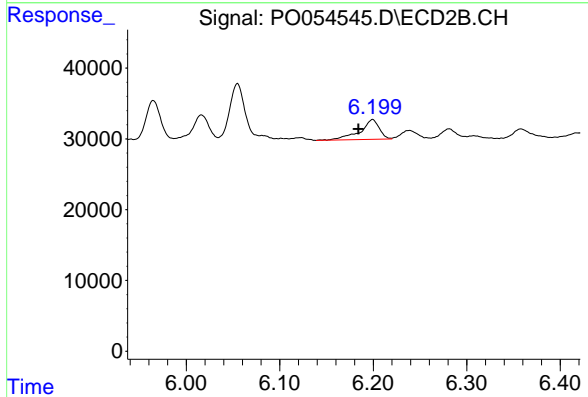
R.T.: 6.281 min
 Delta R.T.: 0.001 min
 Response: 11902
 Conc: 5.88 ng/ml



#31 AR-1260-1

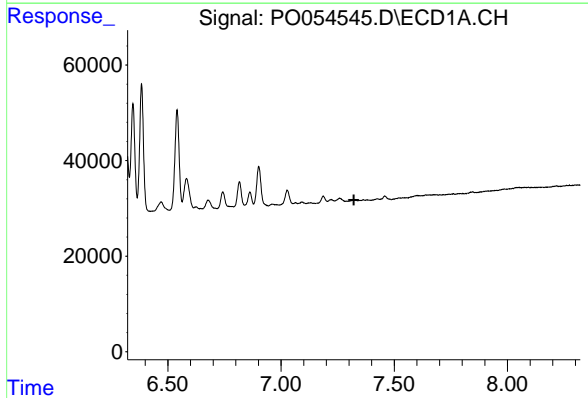
R.T.: 7.027 min
 Delta R.T.: -0.037 min
 Response: 41195
 Conc: 16.76 ng/ml

Instrument :
 ECD_O
 ClientSampleId :
 BPS1-TT-MW30411-20190312



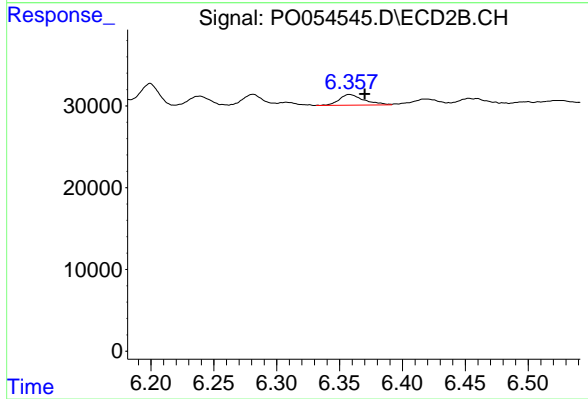
#31 AR-1260-1

R.T.: 6.199 min
 Delta R.T.: 0.015 min
 Response: 40174
 Conc: 17.22 ng/ml



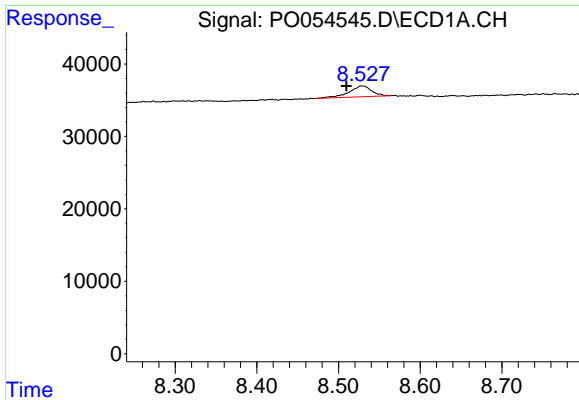
#32 AR-1260-2

R.T.: 0.000 min
 Exp R.T. : 7.322 min
 Response: 0
 Conc: N.D.



#32 AR-1260-2

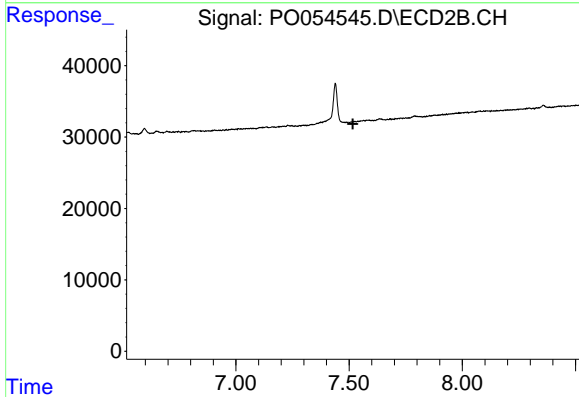
R.T.: 6.358 min
 Delta R.T.: -0.012 min
 Response: 17763
 Conc: 6.23 ng/ml



#38 AR-1262-3

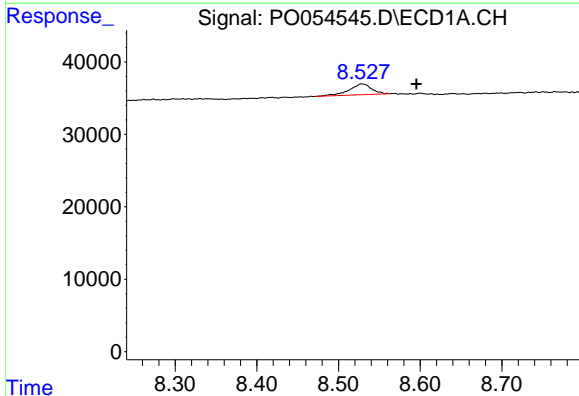
R.T.: 8.528 min
 Delta R.T.: 0.019 min
 Response: 28062
 Conc: 6.03 ng/ml

Instrument :
 ECD_O
 ClientSampleId :
 BPS1-TT-MW30411-20190312



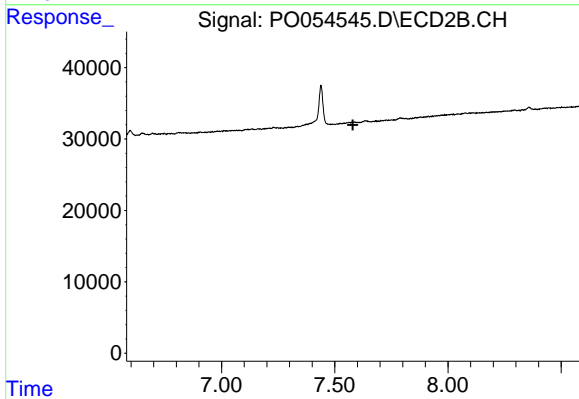
#38 AR-1262-3

R.T.: 0.000 min
 Exp R.T. : 7.516 min
 Response: 0
 Conc: N.D.



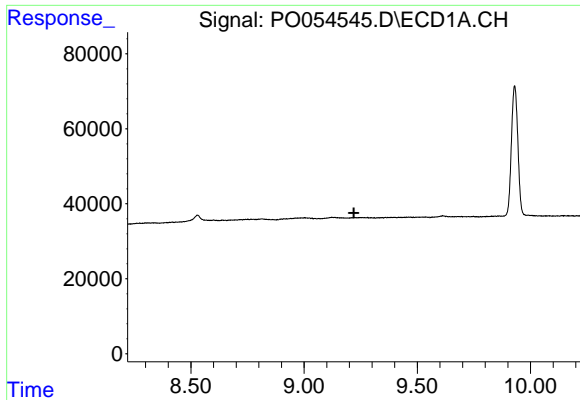
#39 AR-1262-4

R.T.: 8.528 min
 Delta R.T.: -0.067 min
 Response: 28062
 Conc: 8.00 ng/ml



#39 AR-1262-4

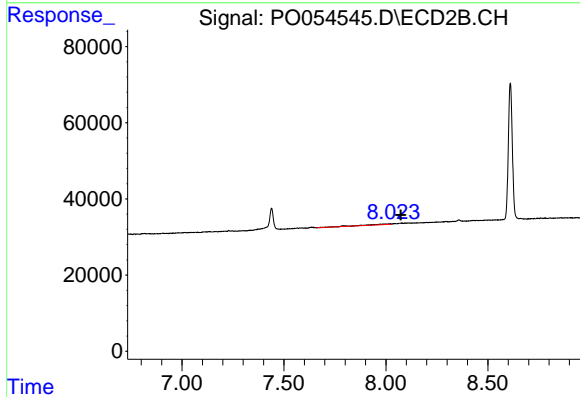
R.T.: 0.000 min
 Exp R.T. : 7.580 min
 Response: 0
 Conc: N.D.



#40 AR-1262-5

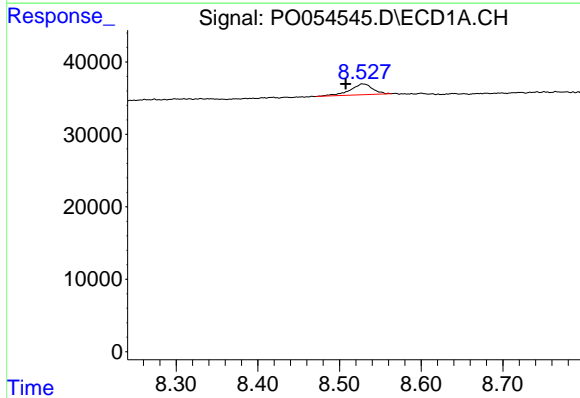
R.T.: 0.000 min
 Exp R.T.: 9.220 min
 Response: 0
 Conc: N.D.

Instrument :
 ECD_O
ClientSampled :
 BPS1-TT-MW30411-20190312



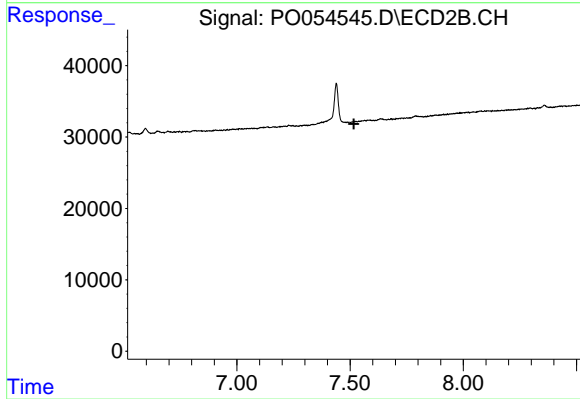
#40 AR-1262-5

R.T.: 8.024 min
 Delta R.T.: -0.048 min
 Response: 13123
 Conc: 7.18 ng/ml



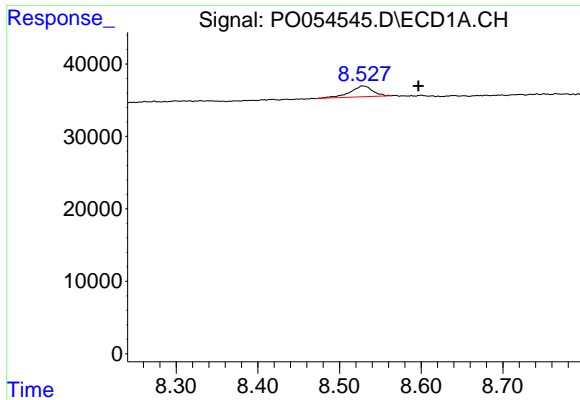
#41 AR-1268-1

R.T.: 8.528 min
 Delta R.T.: 0.021 min
 Response: 28062
 Conc: 3.59 ng/ml



#41 AR-1268-1

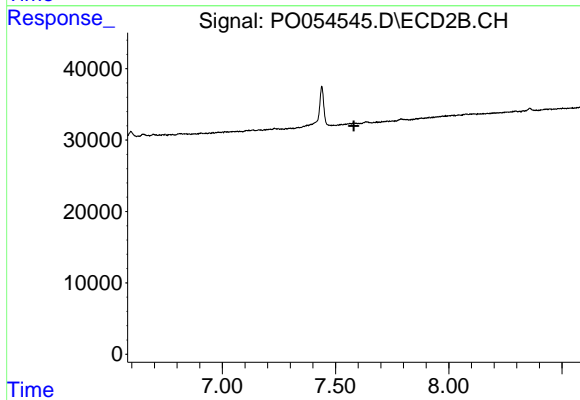
R.T.: 0.000 min
 Exp R.T.: 7.517 min
 Response: 0
 Conc: N.D.



#42 AR-1268-2

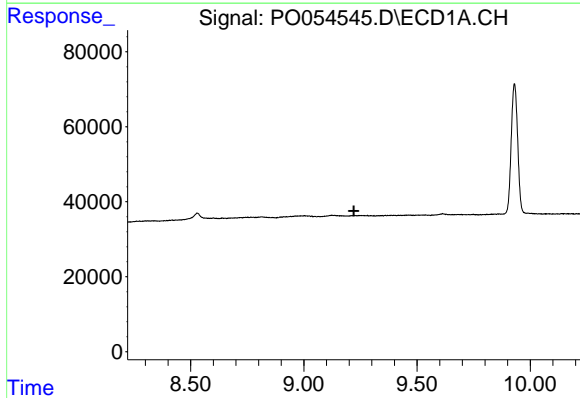
R.T.: 8.528 min
 Delta R.T.: -0.068 min
 Response: 28062
 Conc: 3.93 ng/ml

Instrument :
 ECD_O
 ClientSampleId :
 BPS1-TT-MW30411-20190312



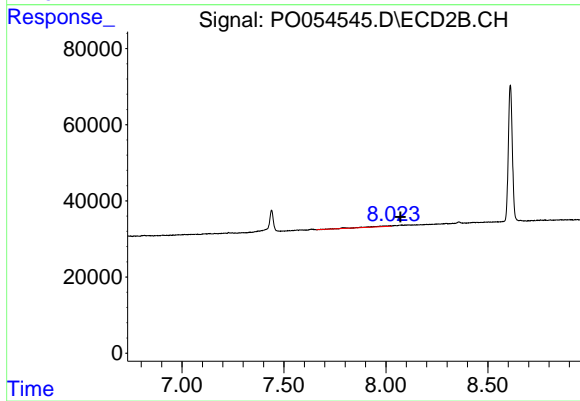
#42 AR-1268-2

R.T.: 0.000 min
 Exp R.T. : 7.581 min
 Response: 0
 Conc: N.D.



#44 AR-1268-4

R.T.: 0.000 min
 Exp R.T. : 9.221 min
 Response: 0
 Conc: N.D.



#44 AR-1268-4

R.T.: 8.024 min
 Delta R.T.: -0.047 min
 Response: 13123
 Conc: 6.49 ng/ml