

Data Path : Z:\pestpcbsrv\HPCHEM1\ECD\_0\Data\P0032419\  
 Data File : P0054548.D  
 Signal(s) : Signal #1: ECD1A.CH Signal #2: ECD2B.CH  
 Acq On : 24 Mar 2019 15:50  
 Operator : SM/SJ  
 Sample : AR1660CCC500  
 Misc :  
 ALS Vial : 3 Sample Multiplier: 1

Instrument :  
 ECD\_0  
 ClientSampled :  
 AR1660CCC500

Integration File signal 1: autoint1.e  
 Integration File signal 2: autoint2.e  
 Quant Time: Mar 25 05:31:36 2019  
 Quant Method : Z:\pestpcbsrv\HPCHEM1\ECD\_0\methods\P0032319.M  
 Quant Title : GC EXTRACTABLES  
 QLast Update : Mon Mar 25 05:05:57 2019  
 Response via : Initial Calibration  
 Integrator: ChemStation 6890 Scale Mode: Small noise peaks clipped

Volume Inj. : 2 µl  
 Signal #1 Phase : ZB-MR1 Signal #2 Phase: ZB-MR2  
 Signal #1 Info : 30Mx0.32mmx 0.50µ Signal #2 Info : 30M x 0.32mm x 0.25µm

Compound	RT#1	RT#2	Resp#1	Resp#2	ng/ml	ng/ml
System Monitoring Compounds						
1) SA Tetrachlo...	4.309	3.626	1889770	1708058	54.089	51.546
2) SA Decachlor...	9.932	8.611	2300654	1560503	48.927	46.937
Target Compounds						
3) L1 AR-1016-1	5.471	4.706	936536	833693	558.589	522.901
4) L1 AR-1016-2	5.492	4.726	1321070	1142772	569.443	535.771
5) L1 AR-1016-3	5.554	4.902	844273	654365	573.868	537.842
6) L1 AR-1016-4	5.652	4.942	709041	539073	584.299	547.339
7) L1 AR-1016-5	5.945	5.155	745562	727697	583.368	564.484
8) L2 AR-1221-1	4.512	3.839	76898	69069	176.890	167.923
9) L2 AR-1221-2	4.603	3.924	115721	101403	345.899	322.526
10) L2 AR-1221-3	4.679	4.000	418869	368886	404.262	383.139
11) L3 AR-1232-1	4.679	4.000	418869	368886	508.902	489.095
12) L3 AR-1232-2	5.205	4.726	636117	1142772	1389.004	1359.072
13) L3 AR-1232-3	5.492	4.902	1321070	654365	1454.887	1392.971
14) L3 AR-1232-4	5.652	4.984	709041	655376	1522.983	1564.124
15) L3 AR-1232-5	5.742	5.155	662715	727697	1761.216	1553.825
16) L4 AR-1242-1	5.471	4.706	936536	833693	732.237	697.194
17) L4 AR-1242-2	5.492	4.726	1321070	1142772	749.179	716.866
18) L4 AR-1242-3	5.554	4.902	844273	654365	742.121	713.598
19) L4 AR-1242-4	5.652	4.984	709041	655376	760.054	718.997
20) L4 AR-1242-5	6.385	5.505	129583	552081	118.240	463.183 #
21) L5 AR-1248-1	5.471	4.706	936536	833693	707.622	701.964
22) L5 AR-1248-2	5.742	4.942	662715	539073	344.927	334.101
23) L5 AR-1248-3	5.945	4.984	745562	655376	351.094	392.875
24) L5 AR-1248-4	6.346	5.155	158103	727697	62.793	356.893 #
25) L5 AR-1248-5	6.385	5.546	129583	113530	53.829	56.965
26) L6 AR-1254-1	6.319	5.505	554872	552081	302.481	251.703
27) L6 AR-1254-2	6.536	5.651	611231	504810	211.425	259.376
28) L6 AR-1254-3	6.902	6.038	372281	203925	115.152	62.723 #
29) L6 AR-1254-4	7.186	6.281	257316	142157	101.428	70.191 #
30) L6 AR-1254-5	7.603	6.697	1970732	1585188	697.664	527.591
31) L7 AR-1260-1	7.065	6.184	1399746	1254571	569.483	537.709
32) L7 AR-1260-2	7.321	6.370	1678030	1472764	554.088	516.341
33) L7 AR-1260-3	7.679	6.524	1291681	1406523	550.008	527.294
34) L7 AR-1260-4	7.903	6.995	1481298	1119599	540.471	500.183
35) L7 AR-1260-5	8.213	7.234	2752622	2418933	510.907	477.245
36) L8 AR-1262-1	7.679	6.735	1291681	1250104	347.966	378.168
37) L8 AR-1262-2	8.213	7.234	2752622	2418933	404.700	436.581
38) L8 AR-1262-3	8.525	7.517	1758805	573411	377.790	248.129 #
39) L8 AR-1262-4	8.596	7.580	425248	1718984	121.195	418.948 #
40) L8 AR-1262-5	9.223	8.072	779879	612613	323.988	335.184
41) L9 AR-1268-1	8.525	7.517	1758805	573411	225.153	92.510 #

Data Path : Z:\pestpcbsrv\HPCHEM1\ECD\_0\Data\P0032419\  
 Data File : P0054548.D  
 Signal(s) : Signal #1: ECD1A.CH Signal #2: ECD2B.CH  
 Acq On : 24 Mar 2019 15:50  
 Operator : SM/SJ  
 Sample : AR1660CCC500  
 Misc :  
 ALS Vial : 3 Sample Multiplier: 1

Instrument :  
 ECD\_0  
 ClientSampleId :  
 AR1660CCC500

Integration File signal 1: autoint1.e  
 Integration File signal 2: autoint2.e  
 Quant Time: Mar 25 05:31:36 2019  
 Quant Method : Z:\pestpcbsrv\HPCHEM1\ECD\_0\methods\P0032319.M  
 Quant Title : GC EXTRACTABLES  
 QLast Update : Mon Mar 25 05:05:57 2019  
 Response via : Initial Calibration  
 Integrator: ChemStation 6890 Scale Mode: Small noise peaks clipped

Volume Inj. : 2 µl  
 Signal #1 Phase : ZB-MR1 Signal #2 Phase: ZB-MR2  
 Signal #1 Info : 30Mx0.32mmx 0.50µ Signal #2 Info : 30M x 0.32mm x 0.25µm

	Compound	RT#1	RT#2	Resp#1	Resp#2	ng/ml	ng/ml
42)	L9 AR-1268-2	8.596	7.580	425248	1718984	59.548	308.214 #
43)	L9 AR-1268-3	8.815	7.789	38724	37623	6.534	8.141
44)	L9 AR-1268-4	9.223	8.072	779879	612613	295.211	302.857
45)	L9 AR-1268-5	9.614	8.359	215644	168273	11.815	13.871

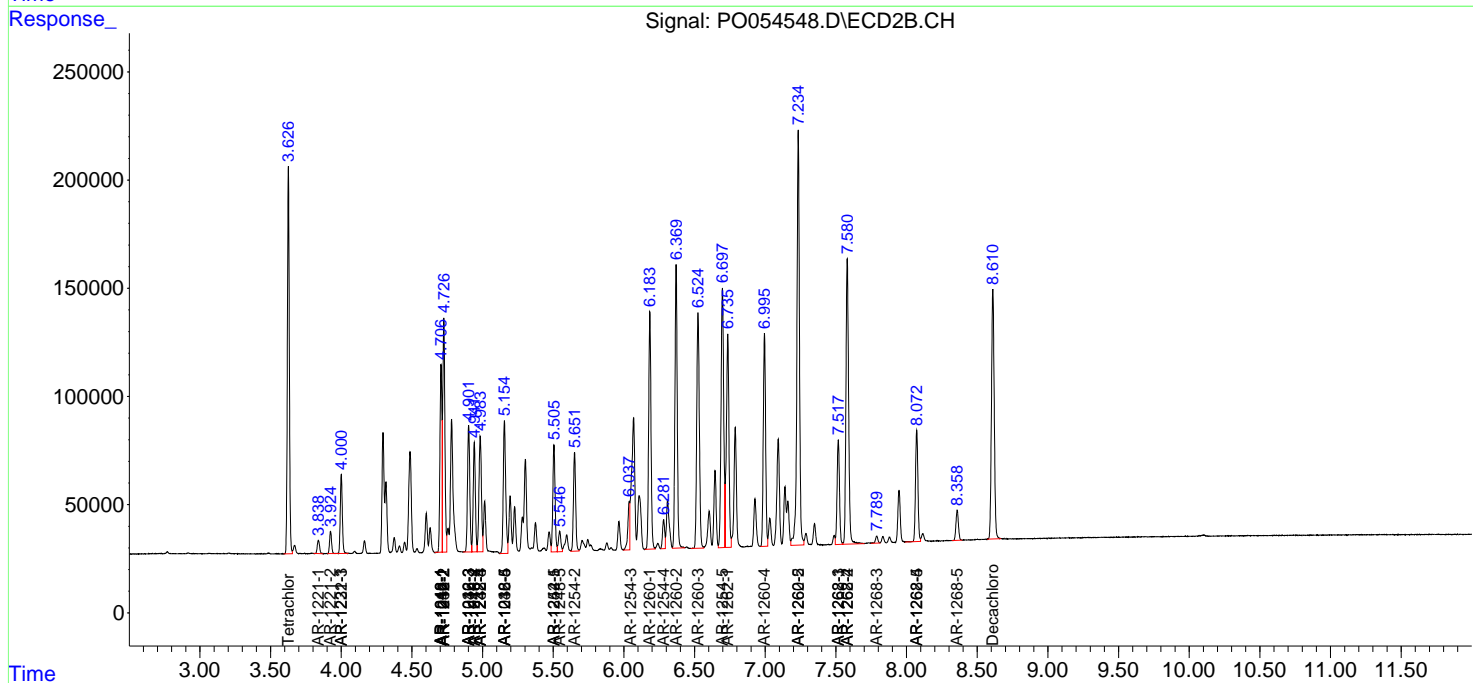
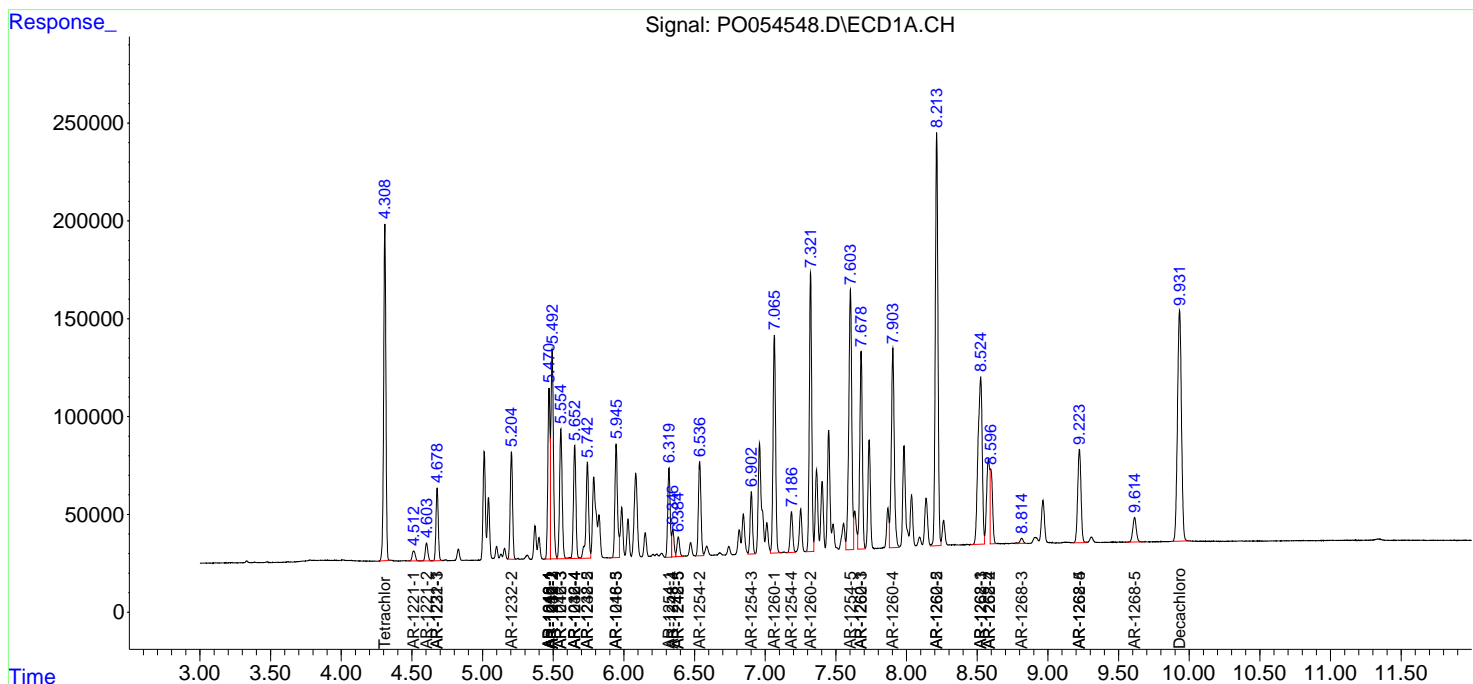
(f)=RT Delta > 1/2 Window (#)=Amounts differ by > 25% (m)=manual int.

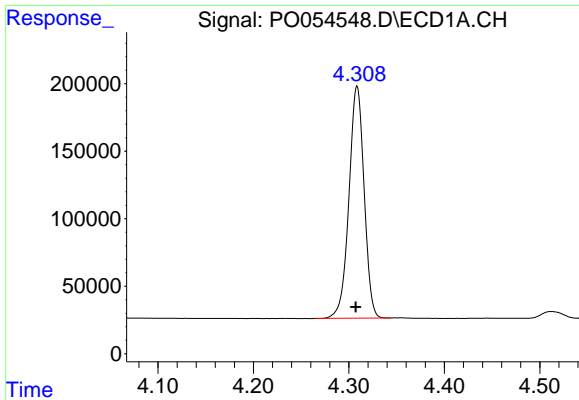
Data Path : Z:\pestpcbsrv\HPCHEM1\ECD\_0\Data\P0032419\  
 Data File : P0054548.D  
 Signal(s) : Signal #1: ECD1A.CH Signal #2: ECD2B.CH  
 Acq On : 24 Mar 2019 15:50  
 Operator : SM/SJ  
 Sample : AR1660CCC500  
 Misc :  
 ALS Vial : 3 Sample Multiplier: 1

Instrument :  
 ECD\_O  
 ClientSampled :  
 AR1660CCC500

Integration File signal 1: autoint1.e  
 Integration File signal 2: autoint2.e  
 Quant Time: Mar 25 05:31:36 2019  
 Quant Method : Z:\pestpcbsrv\HPCHEM1\ECD\_0\methods\P0032319.M  
 Quant Title : GC EXTRACTABLES  
 QLast Update : Mon Mar 25 05:05:57 2019  
 Response via : Initial Calibration  
 Integrator: ChemStation 6890 Scale Mode: Small noise peaks clipped

Volume Inj. : 2 µl  
 Signal #1 Phase : ZB-MR1 Signal #2 Phase: ZB-MR2  
 Signal #1 Info : 30Mx0.32mmx 0.50µ Signal #2 Info : 30M x 0.32mm x 0.25µm

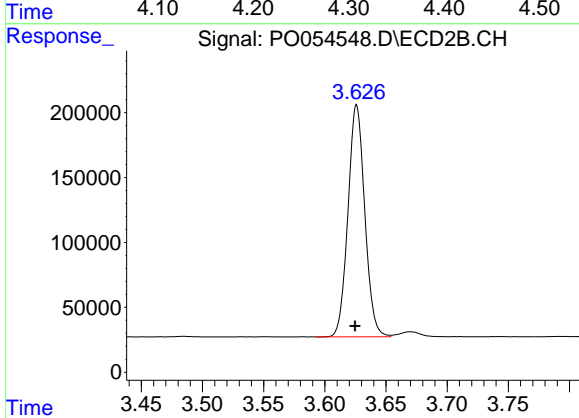




#1 Tetrachloro-m-xylene

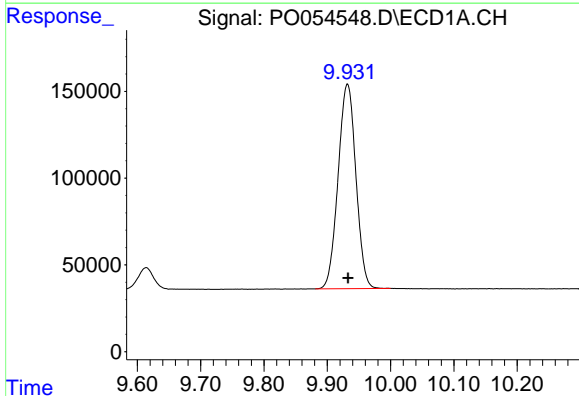
R.T.: 4.309 min  
 Delta R.T.: 0.002 min  
 Response: 1889770  
 Conc: 54.09 ng/ml

Instrument :  
 ECD\_O  
 ClientSampleId :  
 AR1660CCC500



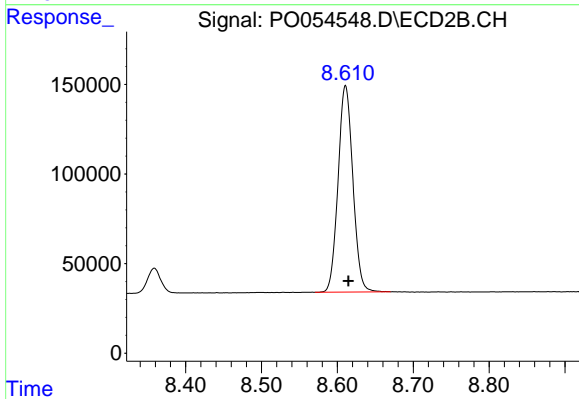
#1 Tetrachloro-m-xylene

R.T.: 3.626 min  
 Delta R.T.: 0.001 min  
 Response: 1708058  
 Conc: 51.55 ng/ml



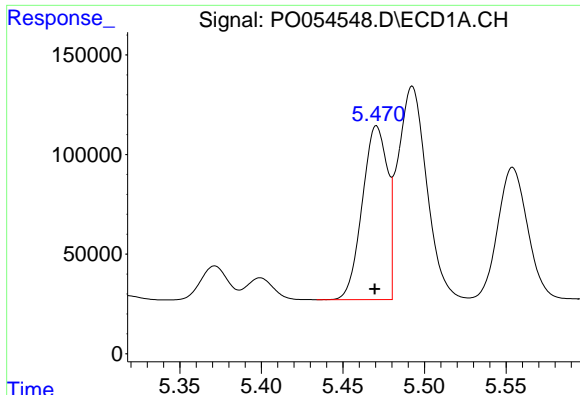
#2 Decachlorobiphenyl

R.T.: 9.932 min  
 Delta R.T.: 0.000 min  
 Response: 2300654  
 Conc: 48.93 ng/ml



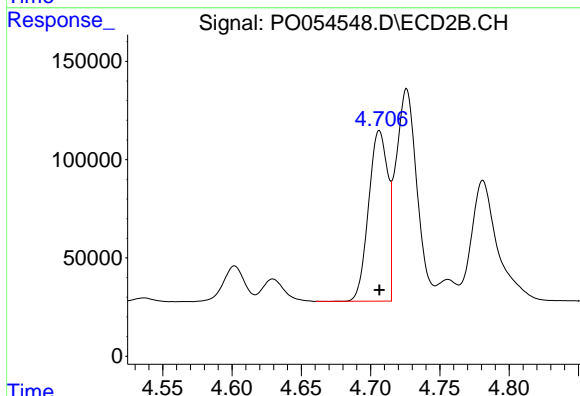
#2 Decachlorobiphenyl

R.T.: 8.611 min  
 Delta R.T.: -0.004 min  
 Response: 1560503  
 Conc: 46.94 ng/ml

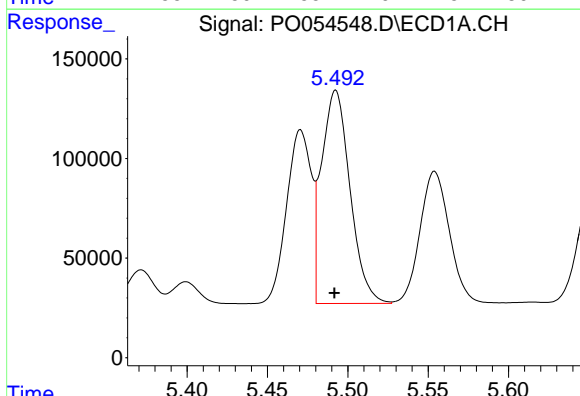


#3 AR-1016-1  
 R.T.: 5.471 min  
 Delta R.T.: 0.001 min  
 Response: 936536  
 Conc: 558.59 ng/ml

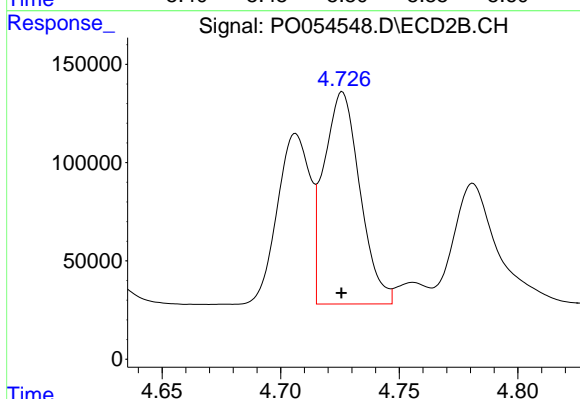
Instrument :  
 ECD\_O  
 ClientSampled :  
 AR1660CCC500



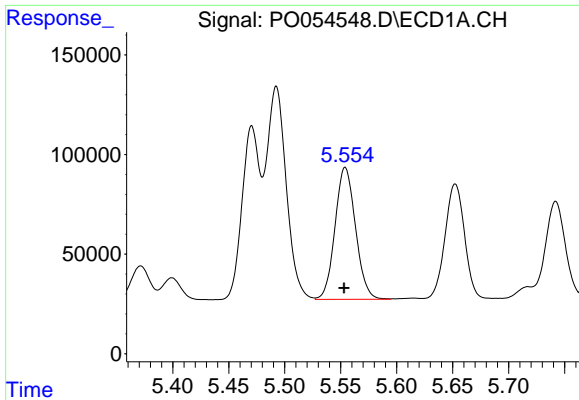
#3 AR-1016-1  
 R.T.: 4.706 min  
 Delta R.T.: 0.000 min  
 Response: 833693  
 Conc: 522.90 ng/ml



#4 AR-1016-2  
 R.T.: 5.492 min  
 Delta R.T.: 0.000 min  
 Response: 1321070  
 Conc: 569.44 ng/ml

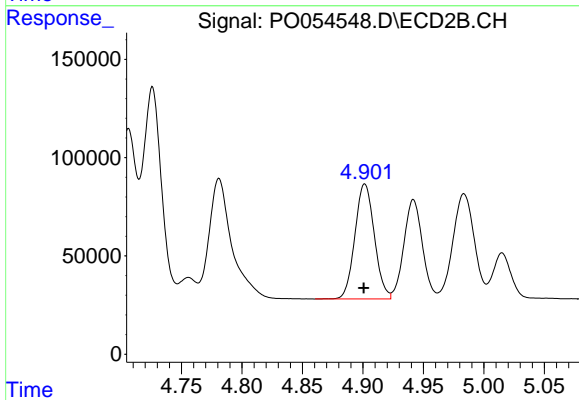


#4 AR-1016-2  
 R.T.: 4.726 min  
 Delta R.T.: 0.000 min  
 Response: 1142772  
 Conc: 535.77 ng/ml

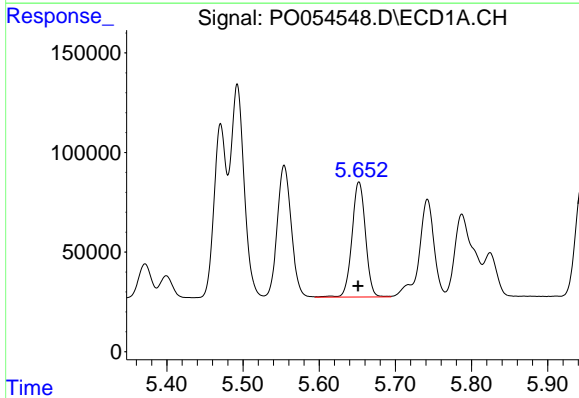


#5 AR-1016-3  
 R.T.: 5.554 min  
 Delta R.T.: 0.000 min  
 Response: 844273  
 Conc: 573.87 ng/ml

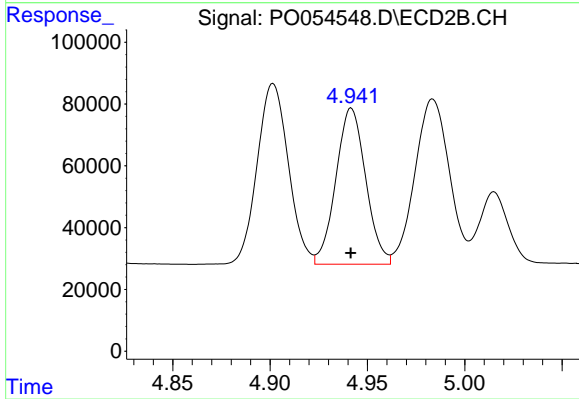
Instrument :  
 ECD\_O  
 ClientSampleId :  
 AR1660CCC500



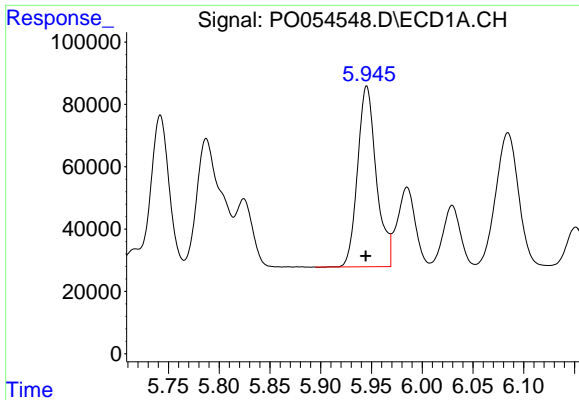
#5 AR-1016-3  
 R.T.: 4.902 min  
 Delta R.T.: 0.000 min  
 Response: 654365  
 Conc: 537.84 ng/ml



#6 AR-1016-4  
 R.T.: 5.652 min  
 Delta R.T.: 0.001 min  
 Response: 709041  
 Conc: 584.30 ng/ml



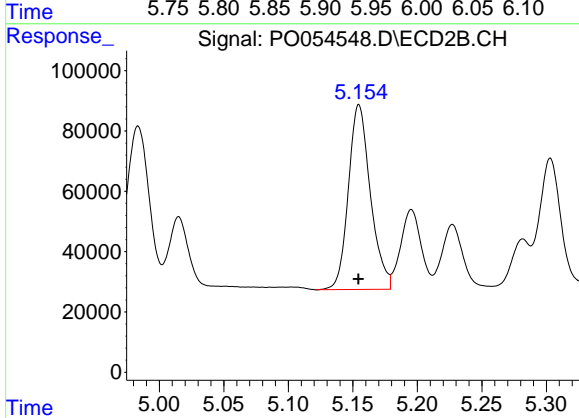
#6 AR-1016-4  
 R.T.: 4.942 min  
 Delta R.T.: 0.000 min  
 Response: 539073  
 Conc: 547.34 ng/ml



#7 AR-1016-5

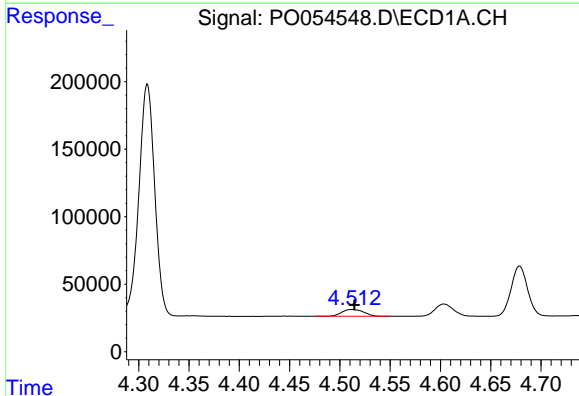
R.T.: 5.945 min  
 Delta R.T.: 0.001 min  
 Response: 745562  
 Conc: 583.37 ng/ml

**Instrument :**  
 ECD\_O  
**ClientSampled :**  
 AR1660CCC500



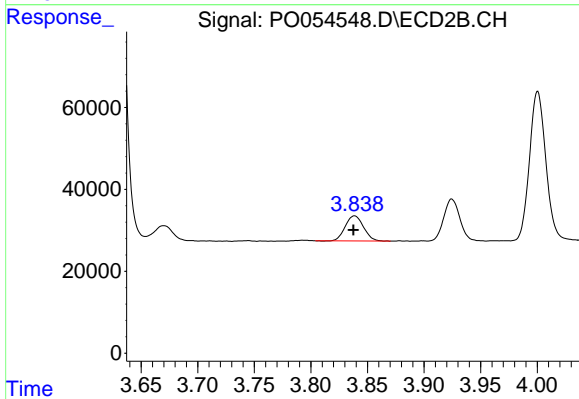
#7 AR-1016-5

R.T.: 5.155 min  
 Delta R.T.: 0.000 min  
 Response: 727697  
 Conc: 564.48 ng/ml



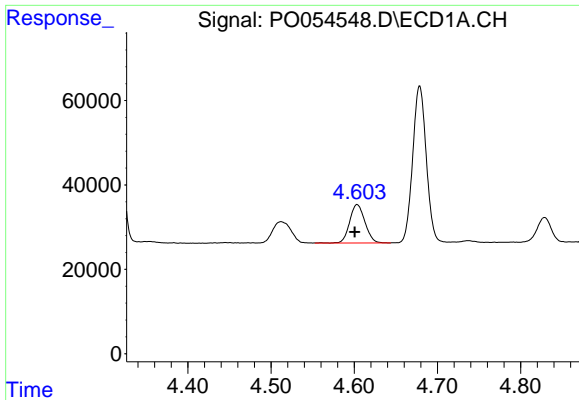
#8 AR-1221-1

R.T.: 4.512 min  
 Delta R.T.: -0.002 min  
 Response: 76898  
 Conc: 176.89 ng/ml



#8 AR-1221-1

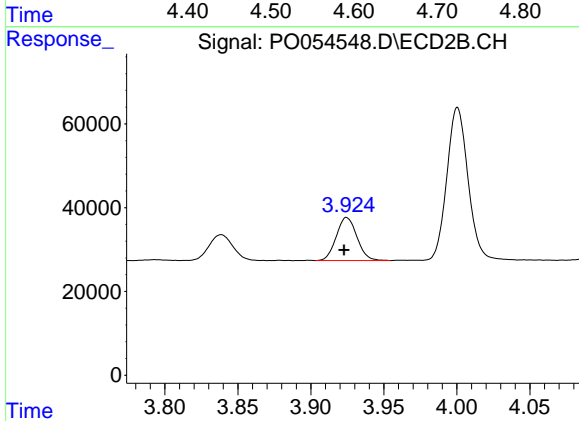
R.T.: 3.839 min  
 Delta R.T.: 0.001 min  
 Response: 69069  
 Conc: 167.92 ng/ml



#9 AR-1221-2

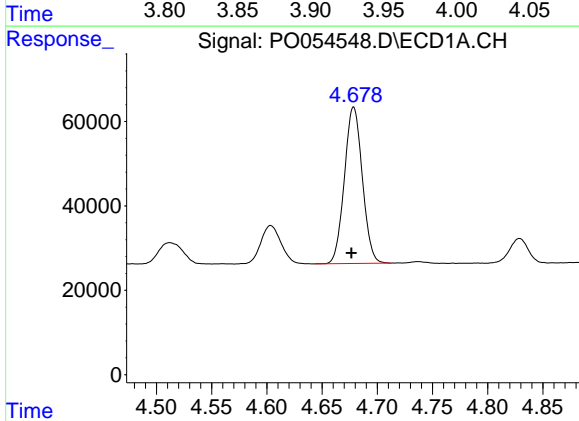
R.T.: 4.603 min  
Delta R.T.: 0.003 min  
Response: 115721  
Conc: 345.90 ng/ml

Instrument :  
ECD\_O  
ClientSampleId :  
AR1660CCC500



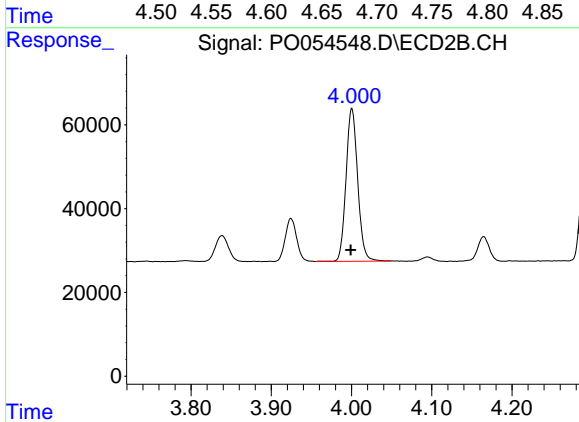
#9 AR-1221-2

R.T.: 3.924 min  
Delta R.T.: 0.002 min  
Response: 101403  
Conc: 322.53 ng/ml



#10 AR-1221-3

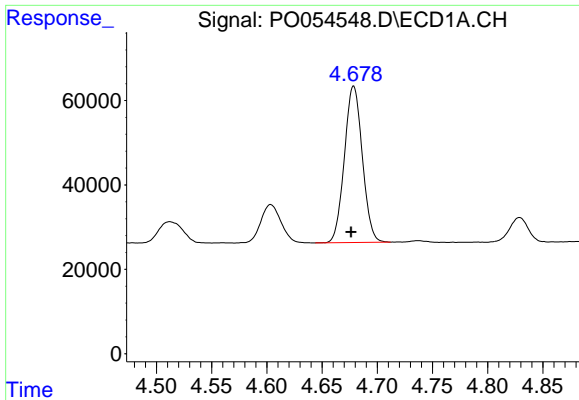
R.T.: 4.679 min  
Delta R.T.: 0.002 min  
Response: 418869  
Conc: 404.26 ng/ml



#10 AR-1221-3

R.T.: 4.000 min  
Delta R.T.: 0.002 min  
Response: 368886  
Conc: 383.14 ng/ml

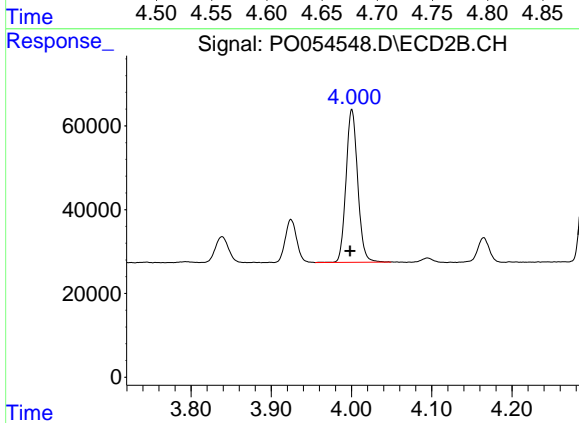




#11 AR-1232-1

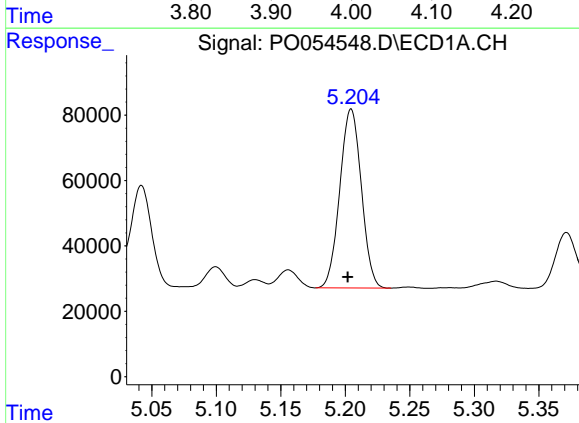
R.T.: 4.679 min  
 Delta R.T.: 0.002 min  
 Response: 418869  
 Conc: 508.90 ng/ml

Instrument :  
 ECD\_O  
 ClientSampleId :  
 AR1660CCC500



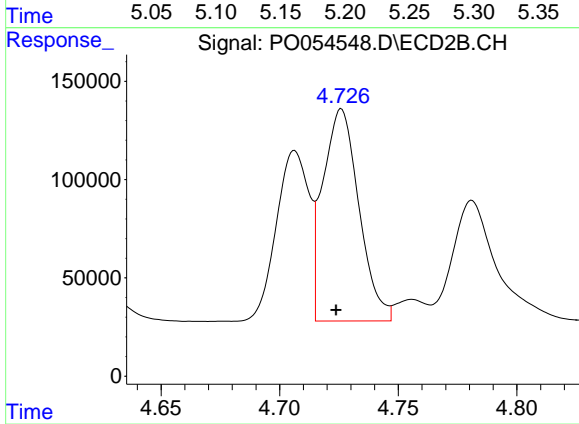
#11 AR-1232-1

R.T.: 4.000 min  
 Delta R.T.: 0.002 min  
 Response: 368886  
 Conc: 489.10 ng/ml



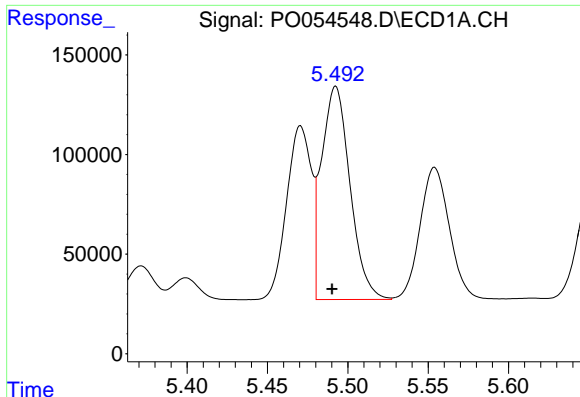
#12 AR-1232-2

R.T.: 5.205 min  
 Delta R.T.: 0.003 min  
 Response: 636117  
 Conc: 1389.00 ng/ml



#12 AR-1232-2

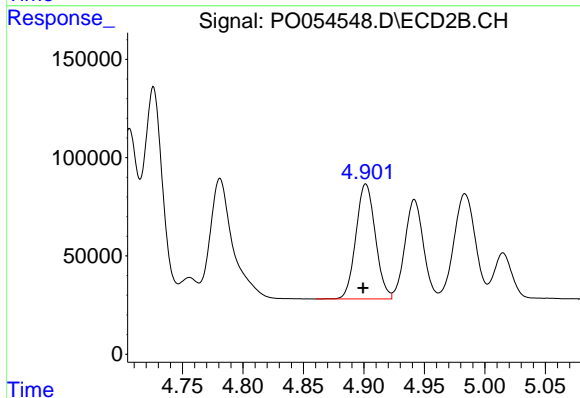
R.T.: 4.726 min  
 Delta R.T.: 0.002 min  
 Response: 1142772  
 Conc: 1359.07 ng/ml



#13 AR-1232-3

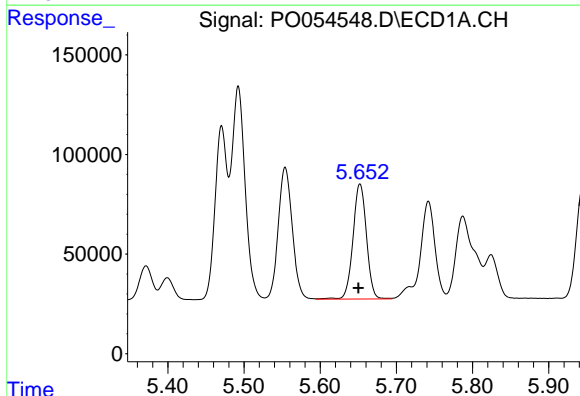
R.T.: 5.492 min  
 Delta R.T.: 0.002 min  
 Response: 1321070  
 Conc: 1454.89 ng/ml

Instrument :  
 ECD\_O  
 ClientSampleId :  
 AR1660CCC500



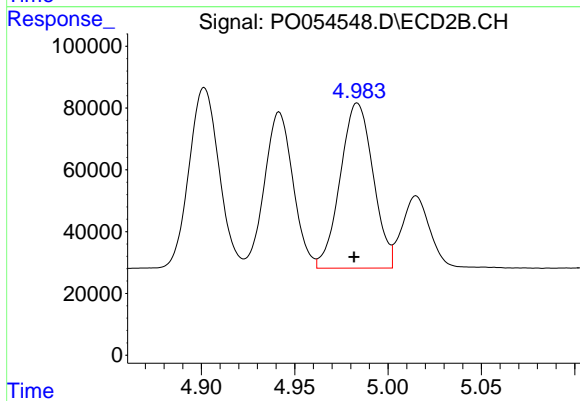
#13 AR-1232-3

R.T.: 4.902 min  
 Delta R.T.: 0.002 min  
 Response: 654365  
 Conc: 1392.97 ng/ml



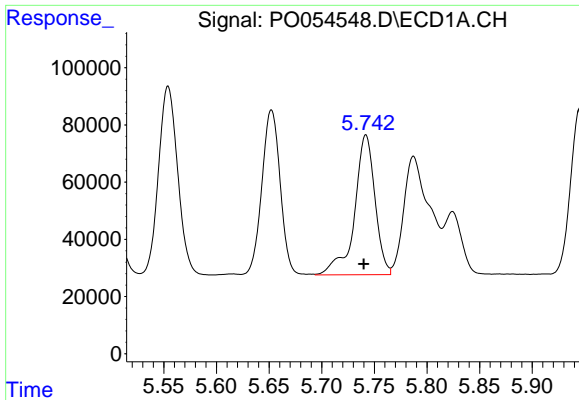
#14 AR-1232-4

R.T.: 5.652 min  
 Delta R.T.: 0.002 min  
 Response: 709041  
 Conc: 1522.98 ng/ml



#14 AR-1232-4

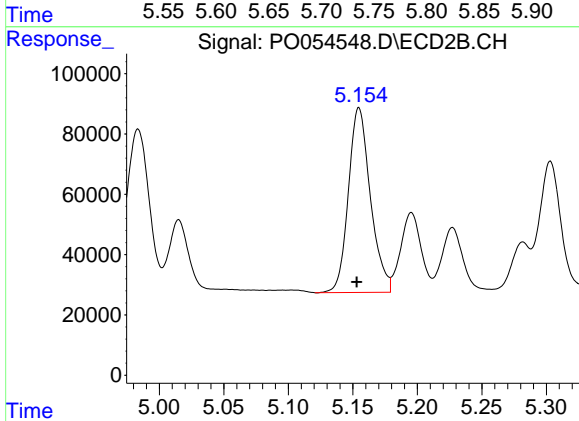
R.T.: 4.984 min  
 Delta R.T.: 0.002 min  
 Response: 655376  
 Conc: 1564.12 ng/ml



#15 AR-1232-5

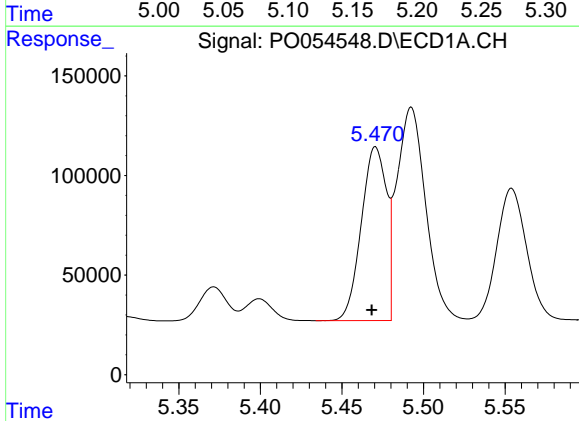
R.T.: 5.742 min  
Delta R.T.: 0.002 min  
Response: 662715  
Conc: 1761.22 ng/ml

Instrument :  
ECD\_O  
ClientSampleId :  
AR1660CCC500



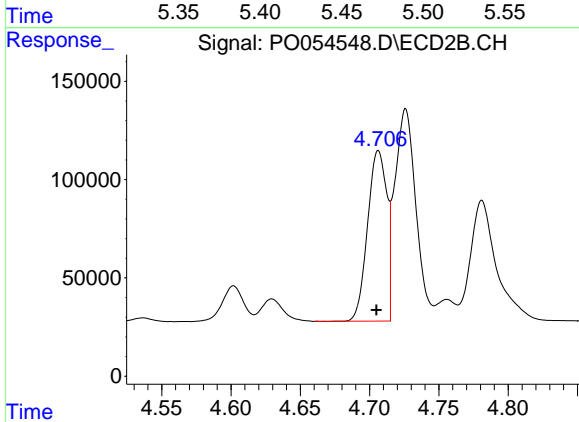
#15 AR-1232-5

R.T.: 5.155 min  
Delta R.T.: 0.002 min  
Response: 727697  
Conc: 1553.83 ng/ml



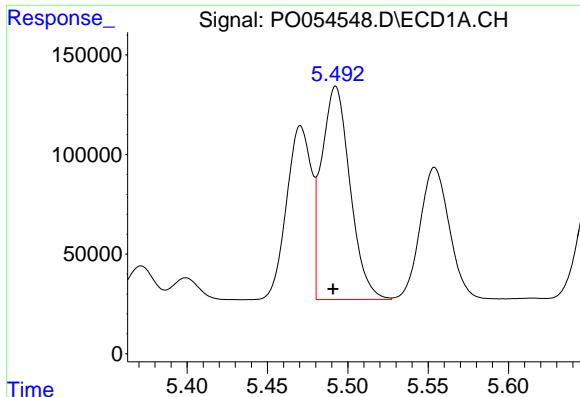
#16 AR-1242-1

R.T.: 5.471 min  
Delta R.T.: 0.002 min  
Response: 936536  
Conc: 732.24 ng/ml



#16 AR-1242-1

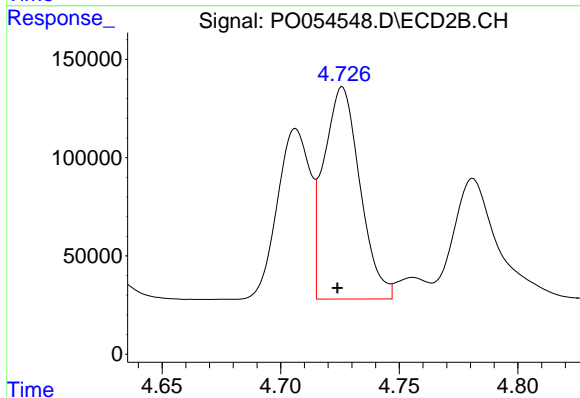
R.T.: 4.706 min  
Delta R.T.: 0.001 min  
Response: 833693  
Conc: 697.19 ng/ml



#17 AR-1242-2

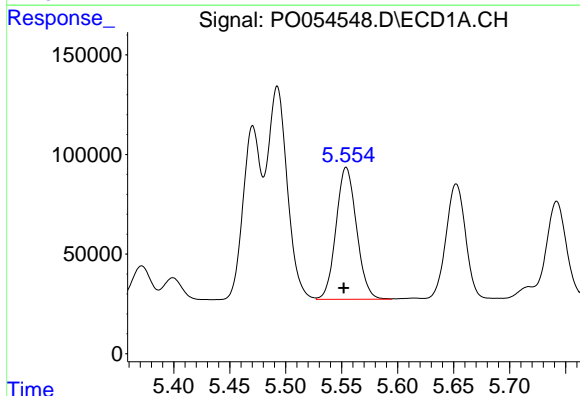
R.T.: 5.492 min  
 Delta R.T.: 0.002 min  
 Response: 1321070  
 Conc: 749.18 ng/ml

Instrument :  
 ECD\_O  
 ClientSampled :  
 AR1660CCC500



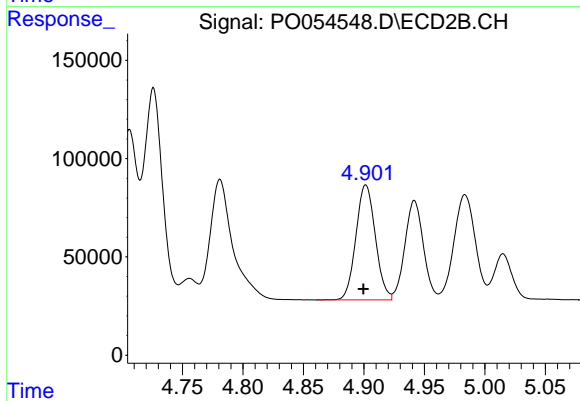
#17 AR-1242-2

R.T.: 4.726 min  
 Delta R.T.: 0.002 min  
 Response: 1142772  
 Conc: 716.87 ng/ml



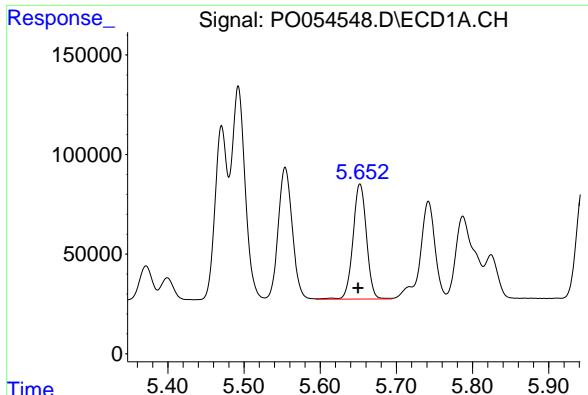
#18 AR-1242-3

R.T.: 5.554 min  
 Delta R.T.: 0.002 min  
 Response: 844273  
 Conc: 742.12 ng/ml



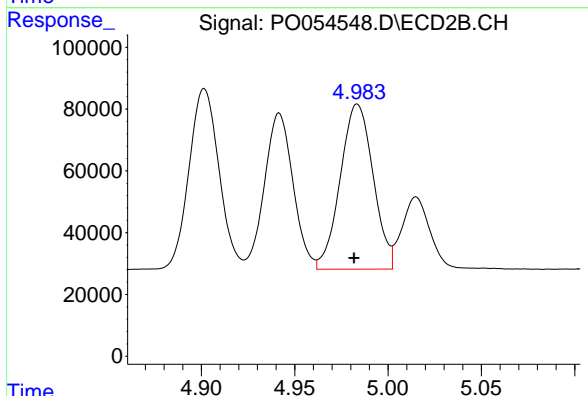
#18 AR-1242-3

R.T.: 4.902 min  
 Delta R.T.: 0.002 min  
 Response: 654365  
 Conc: 713.60 ng/ml

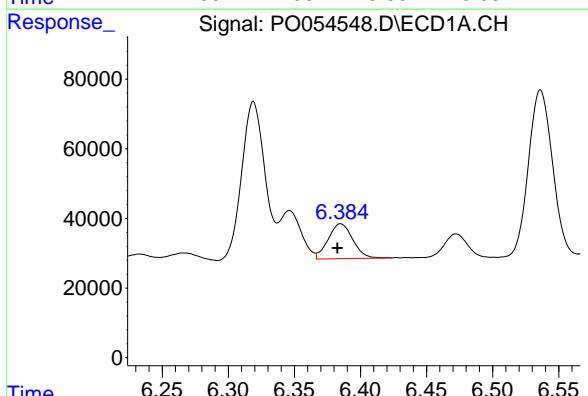


#19 AR-1242-4  
 R.T.: 5.652 min  
 Delta R.T.: 0.002 min  
 Response: 709041  
 Conc: 760.05 ng/ml

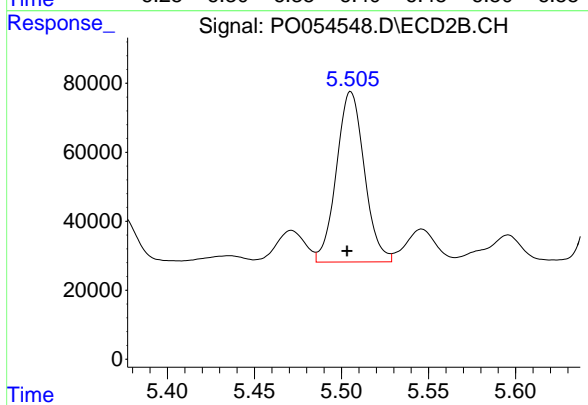
Instrument :  
 ECD\_O  
 ClientSampleId :  
 AR1660CCC500



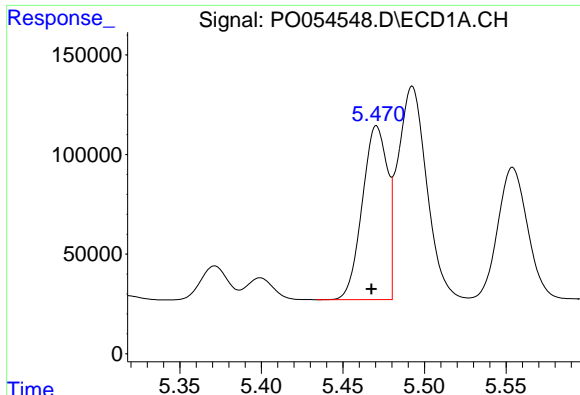
#19 AR-1242-4  
 R.T.: 4.984 min  
 Delta R.T.: 0.002 min  
 Response: 655376  
 Conc: 719.00 ng/ml



#20 AR-1242-5  
 R.T.: 6.385 min  
 Delta R.T.: 0.002 min  
 Response: 129583  
 Conc: 118.24 ng/ml



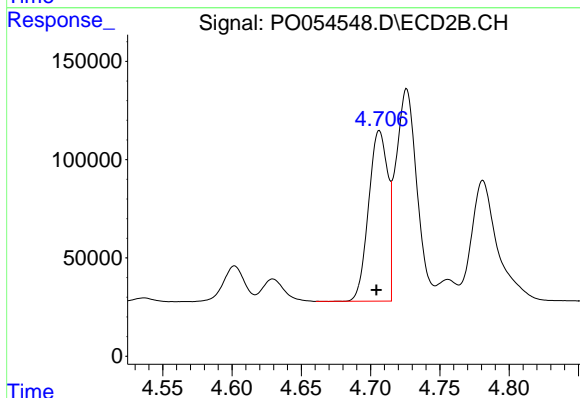
#20 AR-1242-5  
 R.T.: 5.505 min  
 Delta R.T.: 0.002 min  
 Response: 552081  
 Conc: 463.18 ng/ml



#21 AR-1248-1

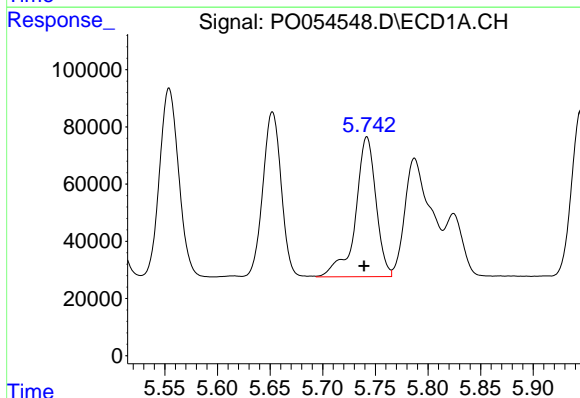
R.T.: 5.471 min  
 Delta R.T.: 0.003 min  
 Response: 936536  
 Conc: 707.62 ng/ml

Instrument :  
 ECD\_O  
 ClientSampleId :  
 AR1660CCC500



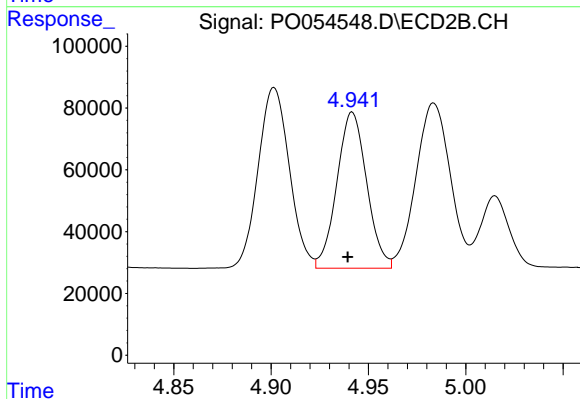
#21 AR-1248-1

R.T.: 4.706 min  
 Delta R.T.: 0.002 min  
 Response: 833693  
 Conc: 701.96 ng/ml



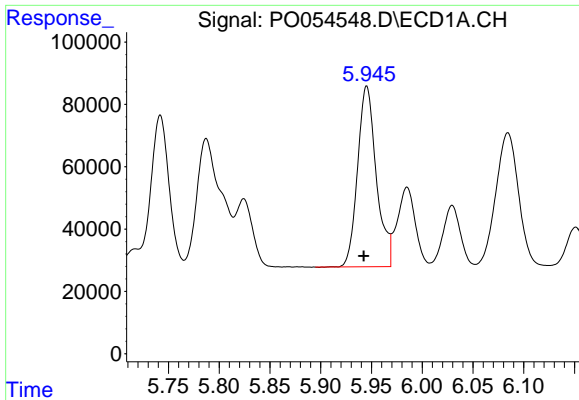
#22 AR-1248-2

R.T.: 5.742 min  
 Delta R.T.: 0.003 min  
 Response: 662715  
 Conc: 344.93 ng/ml



#22 AR-1248-2

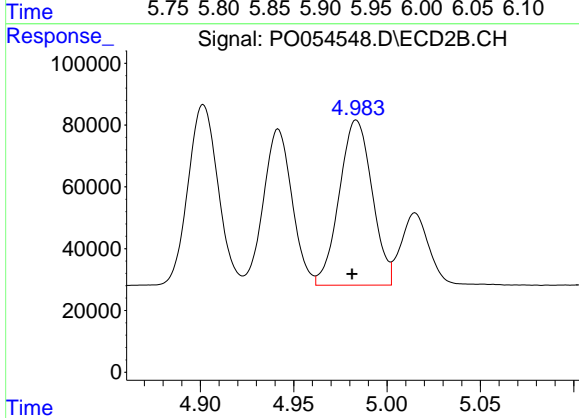
R.T.: 4.942 min  
 Delta R.T.: 0.002 min  
 Response: 539073  
 Conc: 334.10 ng/ml



#23 AR-1248-3

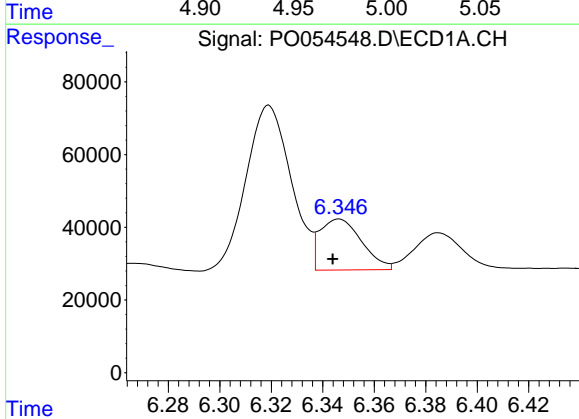
R.T.: 5.945 min  
 Delta R.T.: 0.003 min  
 Response: 745562  
 Conc: 351.09 ng/ml

Instrument :  
 ECD\_O  
 ClientSampleId :  
 AR1660CCC500



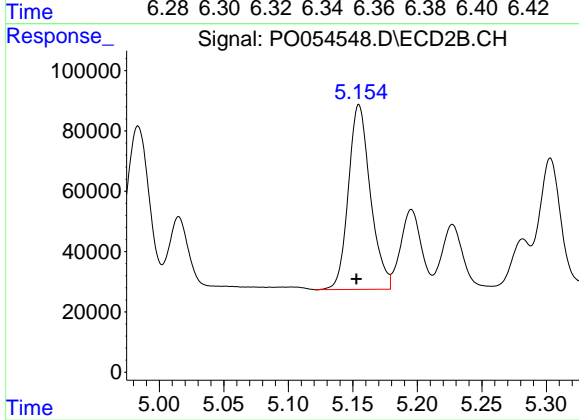
#23 AR-1248-3

R.T.: 4.984 min  
 Delta R.T.: 0.002 min  
 Response: 655376  
 Conc: 392.88 ng/ml



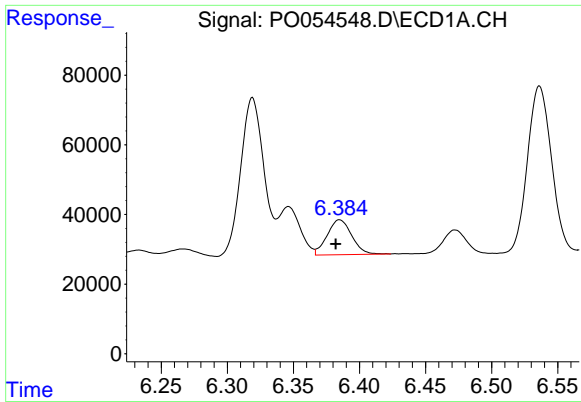
#24 AR-1248-4

R.T.: 6.346 min  
 Delta R.T.: 0.002 min  
 Response: 158103  
 Conc: 62.79 ng/ml



#24 AR-1248-4

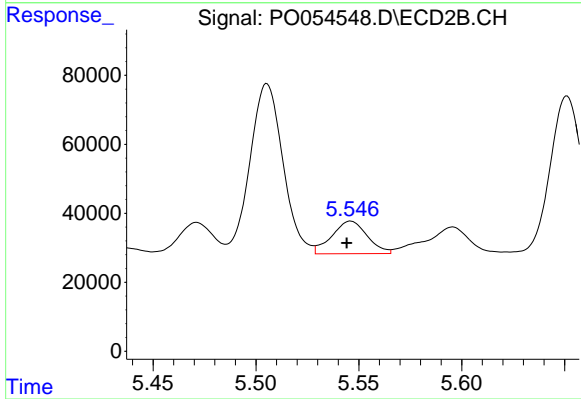
R.T.: 5.155 min  
 Delta R.T.: 0.002 min  
 Response: 727697  
 Conc: 356.89 ng/ml



#25 AR-1248-5

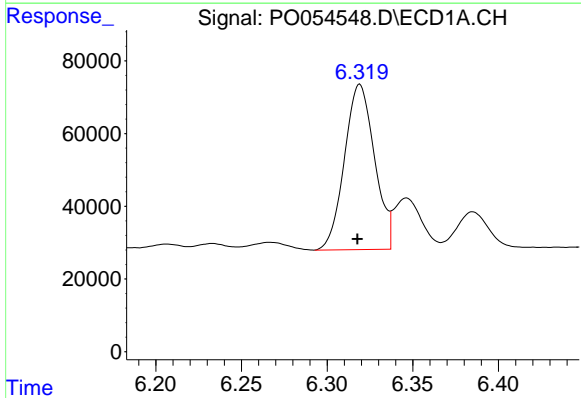
R.T.: 6.385 min  
 Delta R.T.: 0.003 min  
 Response: 129583  
 Conc: 53.83 ng/ml

Instrument :  
 ECD\_O  
 ClientSampled :  
 AR1660CCC500



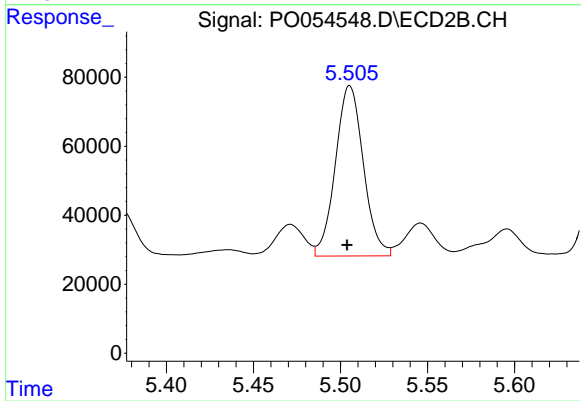
#25 AR-1248-5

R.T.: 5.546 min  
 Delta R.T.: 0.002 min  
 Response: 113530  
 Conc: 56.96 ng/ml



#26 AR-1254-1

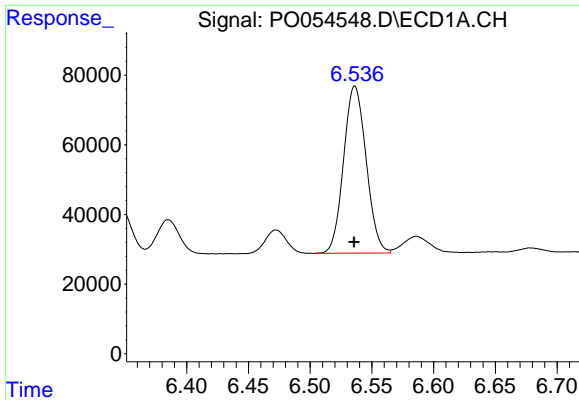
R.T.: 6.319 min  
 Delta R.T.: 0.001 min  
 Response: 554872  
 Conc: 302.48 ng/ml



#26 AR-1254-1

R.T.: 5.505 min  
 Delta R.T.: 0.002 min  
 Response: 552081  
 Conc: 251.70 ng/ml

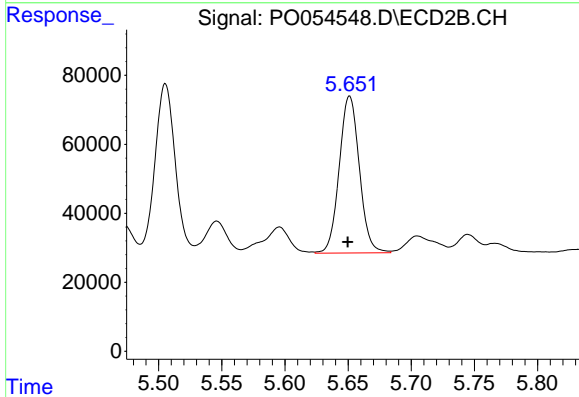




#27 AR-1254-2

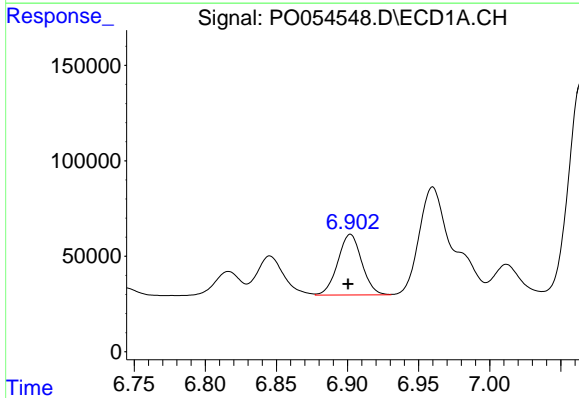
R.T.: 6.536 min  
 Delta R.T.: 0.000 min  
 Response: 611231  
 Conc: 211.42 ng/ml

Instrument :  
 ECD\_O  
 ClientSampleId :  
 AR1660CCC500



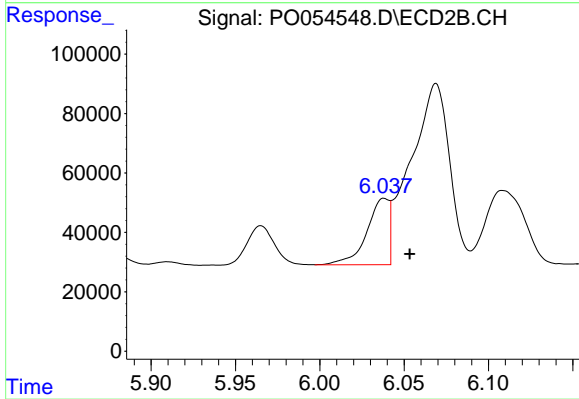
#27 AR-1254-2

R.T.: 5.651 min  
 Delta R.T.: 0.002 min  
 Response: 504810  
 Conc: 259.38 ng/ml



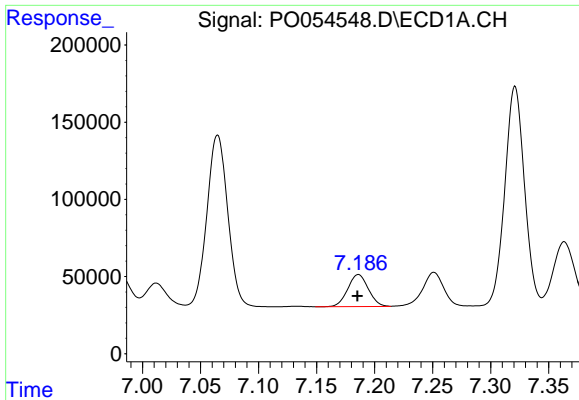
#28 AR-1254-3

R.T.: 6.902 min  
 Delta R.T.: 0.002 min  
 Response: 372281  
 Conc: 115.15 ng/ml



#28 AR-1254-3

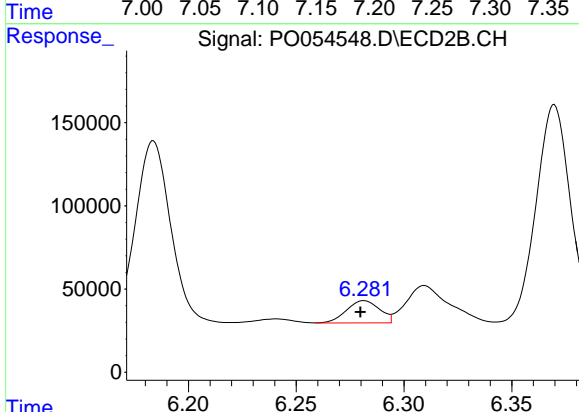
R.T.: 6.038 min  
 Delta R.T.: -0.015 min  
 Response: 203925  
 Conc: 62.72 ng/ml



#29 AR-1254-4

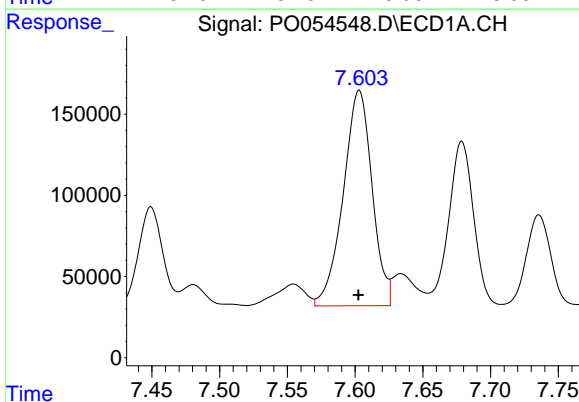
R.T.: 7.186 min  
 Delta R.T.: 0.000 min  
 Response: 257316  
 Conc: 101.43 ng/ml

Instrument :  
 ECD\_O  
 ClientSampleId :  
 AR1660CCC500



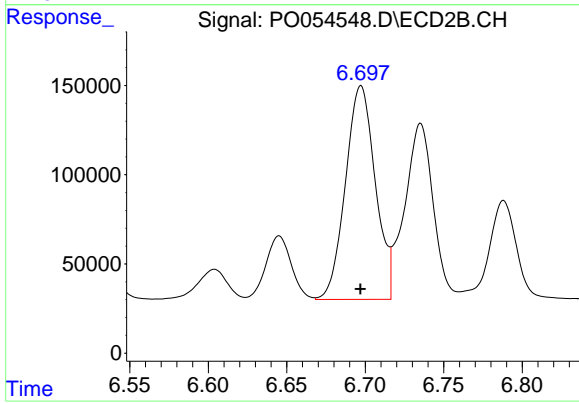
#29 AR-1254-4

R.T.: 6.281 min  
 Delta R.T.: 0.002 min  
 Response: 142157  
 Conc: 70.19 ng/ml



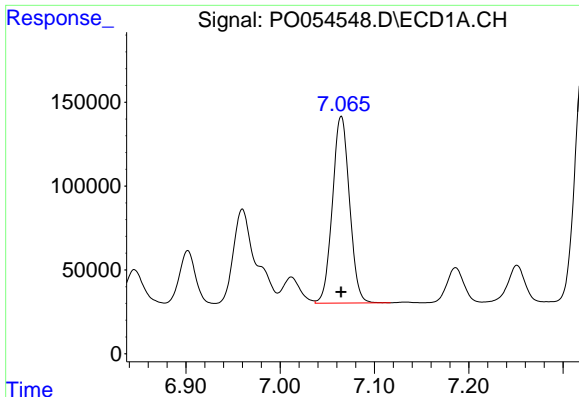
#30 AR-1254-5

R.T.: 7.603 min  
 Delta R.T.: 0.000 min  
 Response: 1970732  
 Conc: 697.66 ng/ml



#30 AR-1254-5

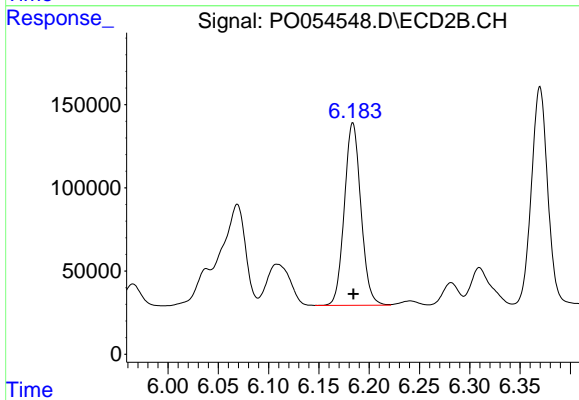
R.T.: 6.697 min  
 Delta R.T.: 0.000 min  
 Response: 1585188  
 Conc: 527.59 ng/ml



#31 AR-1260-1

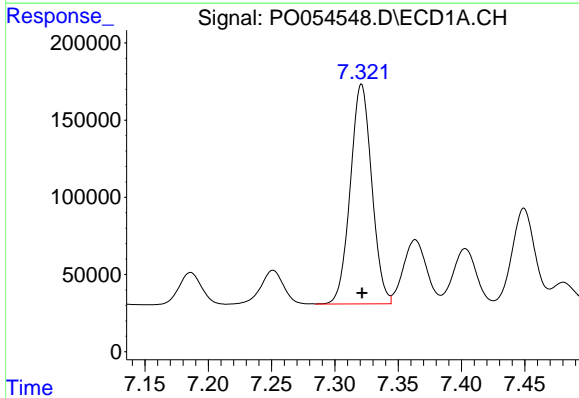
R.T.: 7.065 min  
 Delta R.T.: 0.000 min  
 Response: 1399746  
 Conc: 569.48 ng/ml

Instrument :  
 ECD\_O  
 ClientSampled :  
 AR1660CCC500



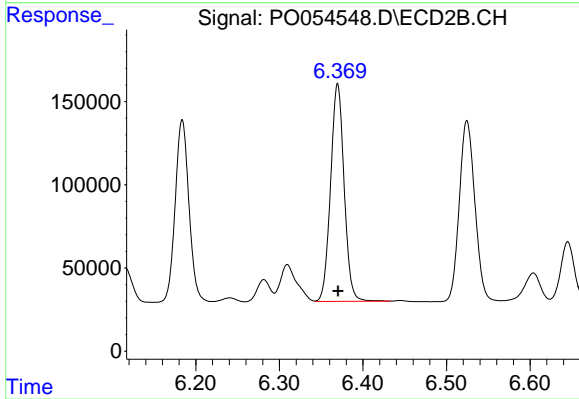
#31 AR-1260-1

R.T.: 6.184 min  
 Delta R.T.: 0.000 min  
 Response: 1254571  
 Conc: 537.71 ng/ml



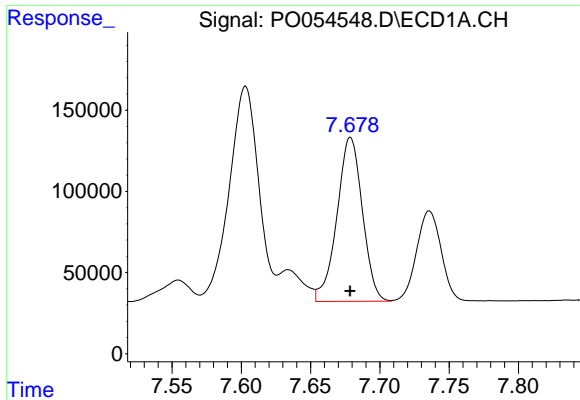
#32 AR-1260-2

R.T.: 7.321 min  
 Delta R.T.: 0.000 min  
 Response: 1678030  
 Conc: 554.09 ng/ml



#32 AR-1260-2

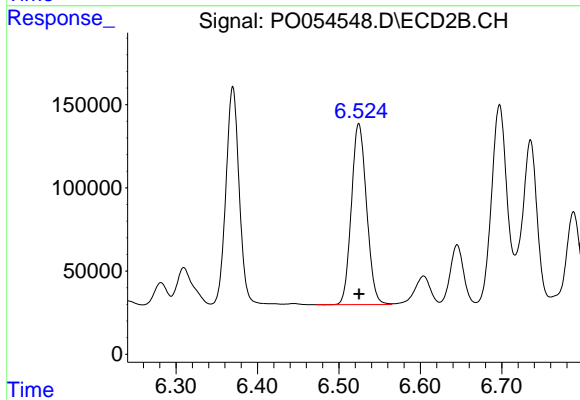
R.T.: 6.370 min  
 Delta R.T.: 0.000 min  
 Response: 1472764  
 Conc: 516.34 ng/ml



#33 AR-1260-3

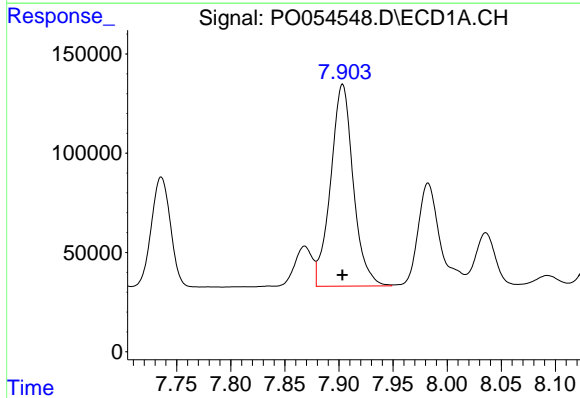
R.T.: 7.679 min  
 Delta R.T.: 0.000 min  
 Response: 1291681  
 Conc: 550.01 ng/ml

Instrument :  
 ECD\_O  
 ClientSampleId :  
 AR1660CCC500



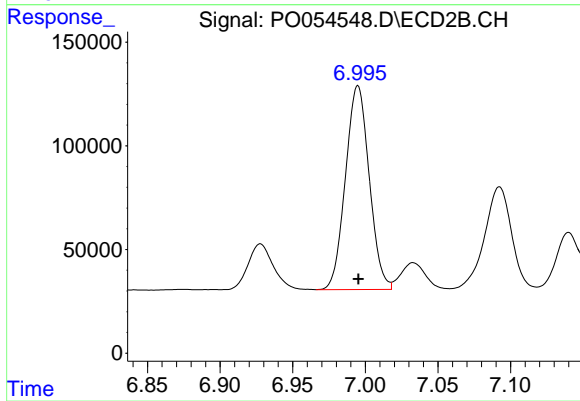
#33 AR-1260-3

R.T.: 6.524 min  
 Delta R.T.: 0.000 min  
 Response: 1406523  
 Conc: 527.29 ng/ml



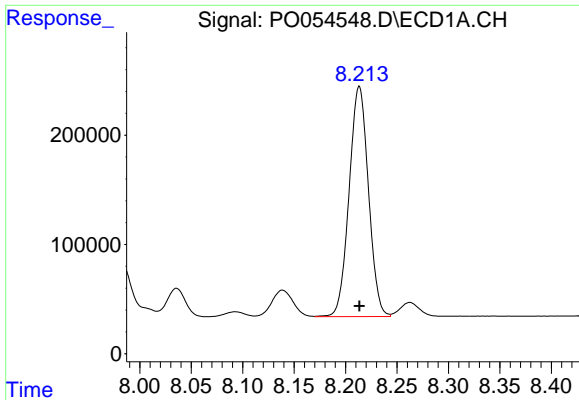
#34 AR-1260-4

R.T.: 7.903 min  
 Delta R.T.: 0.000 min  
 Response: 1481298  
 Conc: 540.47 ng/ml



#34 AR-1260-4

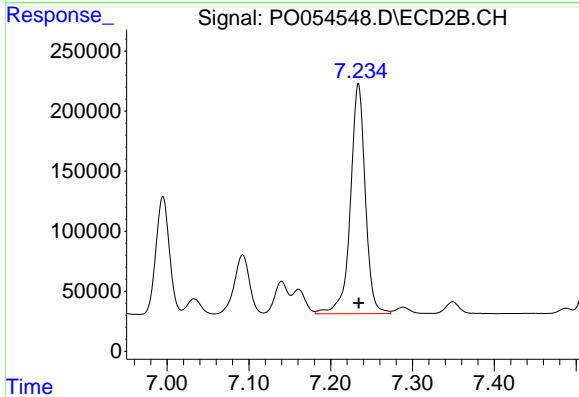
R.T.: 6.995 min  
 Delta R.T.: 0.000 min  
 Response: 1119599  
 Conc: 500.18 ng/ml



#35 AR-1260-5

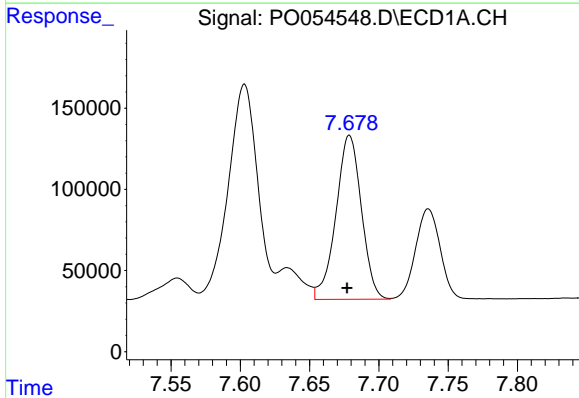
R.T.: 8.213 min  
Delta R.T.: 0.000 min  
Response: 2752622  
Conc: 510.91 ng/ml

Instrument :  
ECD\_O  
ClientSampleId :  
AR1660CCC500



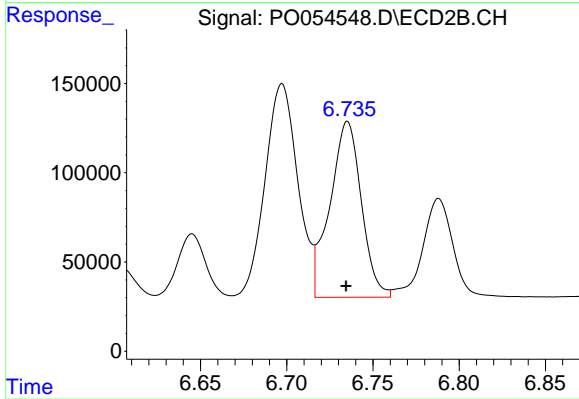
#35 AR-1260-5

R.T.: 7.234 min  
Delta R.T.: 0.000 min  
Response: 2418933  
Conc: 477.25 ng/ml



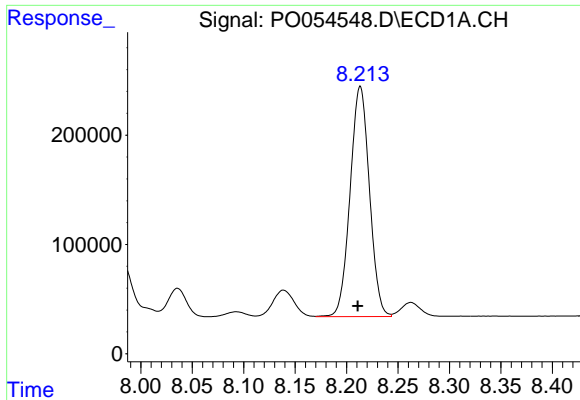
#36 AR-1262-1

R.T.: 7.679 min  
Delta R.T.: 0.002 min  
Response: 1291681  
Conc: 347.97 ng/ml



#36 AR-1262-1

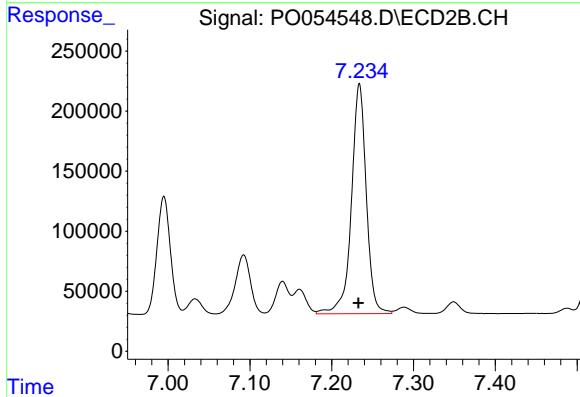
R.T.: 6.735 min  
Delta R.T.: 0.000 min  
Response: 1250104  
Conc: 378.17 ng/ml



#37 AR-1262-2

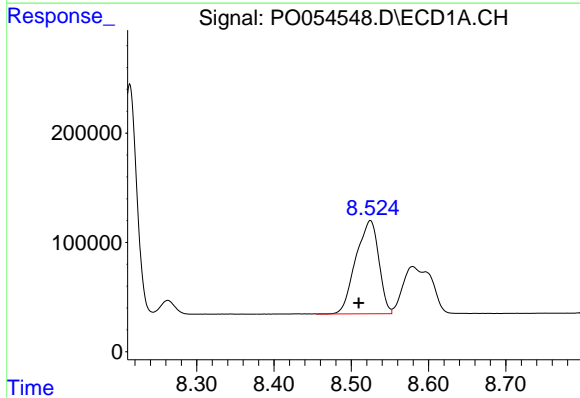
R.T.: 8.213 min  
 Delta R.T.: 0.003 min  
 Response: 2752622  
 Conc: 404.70 ng/ml

Instrument :  
 ECD\_O  
 ClientSampleId :  
 AR1660CCC500



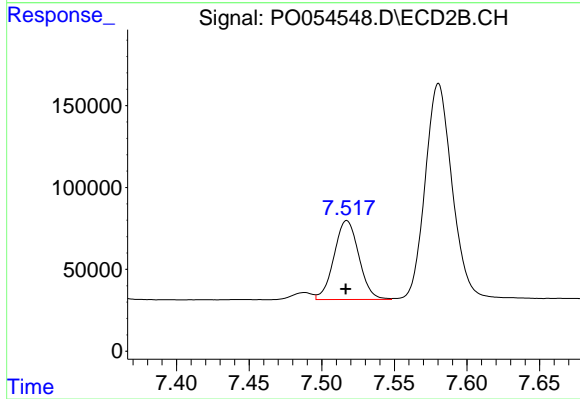
#37 AR-1262-2

R.T.: 7.234 min  
 Delta R.T.: 0.001 min  
 Response: 2418933  
 Conc: 436.58 ng/ml



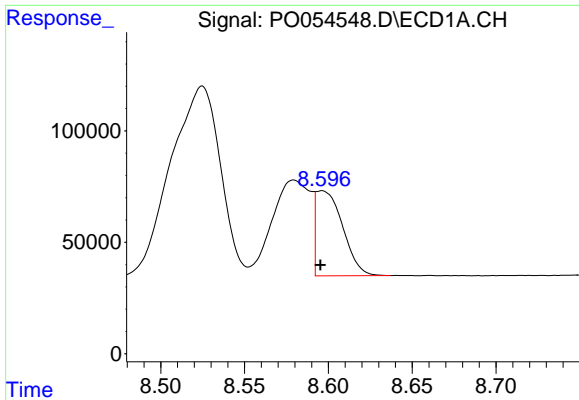
#38 AR-1262-3

R.T.: 8.525 min  
 Delta R.T.: 0.015 min  
 Response: 1758805  
 Conc: 377.79 ng/ml



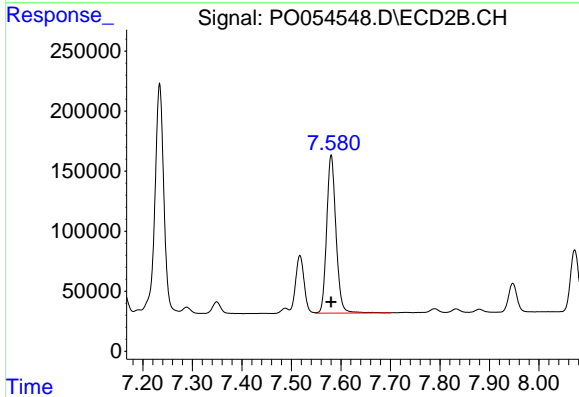
#38 AR-1262-3

R.T.: 7.517 min  
 Delta R.T.: 0.000 min  
 Response: 573411  
 Conc: 248.13 ng/ml

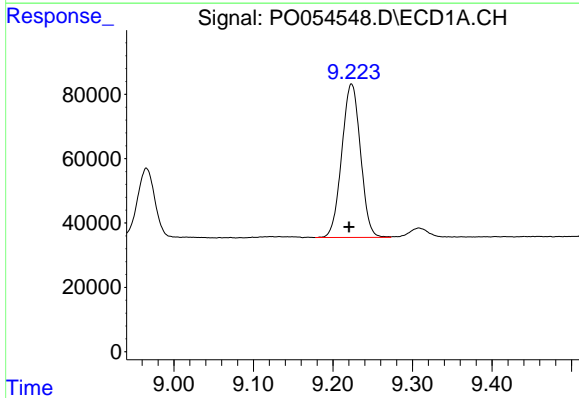


#39 AR-1262-4  
 R.T.: 8.596 min  
 Delta R.T.: 0.000 min  
 Response: 425248  
 Conc: 121.19 ng/ml

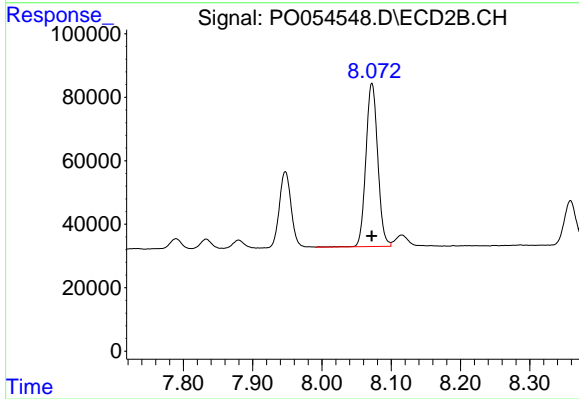
Instrument :  
 ECD\_O  
 ClientSampleId :  
 AR1660CCC500



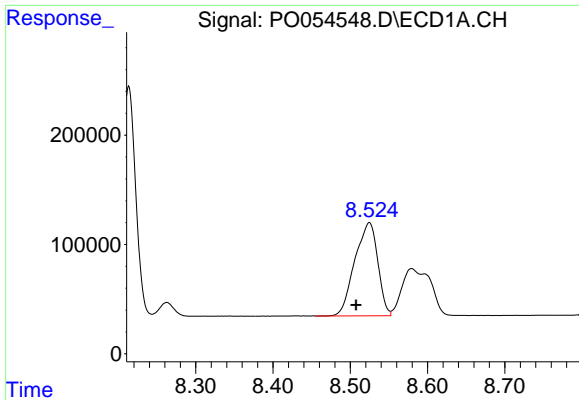
#39 AR-1262-4  
 R.T.: 7.580 min  
 Delta R.T.: 0.000 min  
 Response: 1718984  
 Conc: 418.95 ng/ml



#40 AR-1262-5  
 R.T.: 9.223 min  
 Delta R.T.: 0.003 min  
 Response: 779879  
 Conc: 323.99 ng/ml



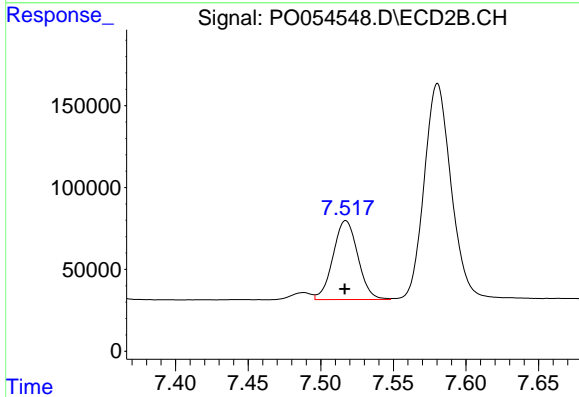
#40 AR-1262-5  
 R.T.: 8.072 min  
 Delta R.T.: 0.000 min  
 Response: 612613  
 Conc: 335.18 ng/ml



#41 AR-1268-1

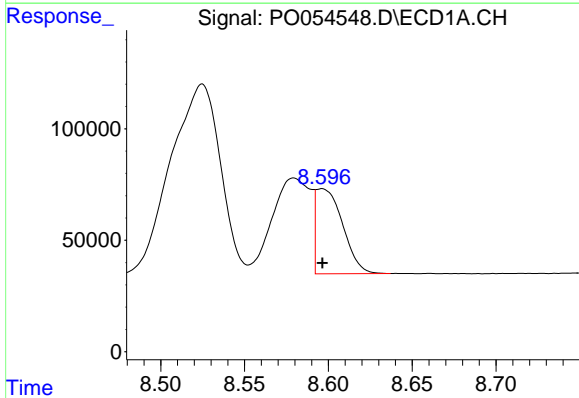
R.T.: 8.525 min  
 Delta R.T.: 0.017 min  
 Response: 1758805  
 Conc: 225.15 ng/ml

Instrument :  
 ECD\_O  
 ClientSampleId :  
 AR1660CCC500



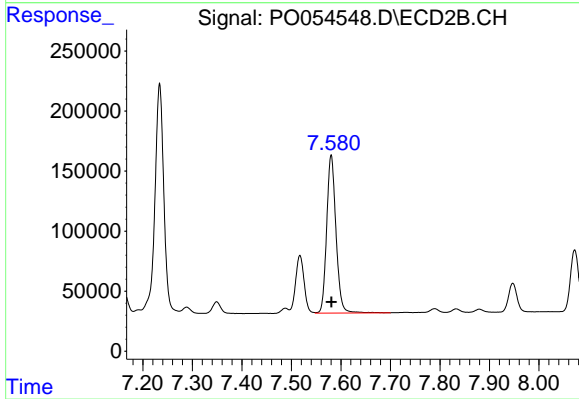
#41 AR-1268-1

R.T.: 7.517 min  
 Delta R.T.: 0.000 min  
 Response: 573411  
 Conc: 92.51 ng/ml



#42 AR-1268-2

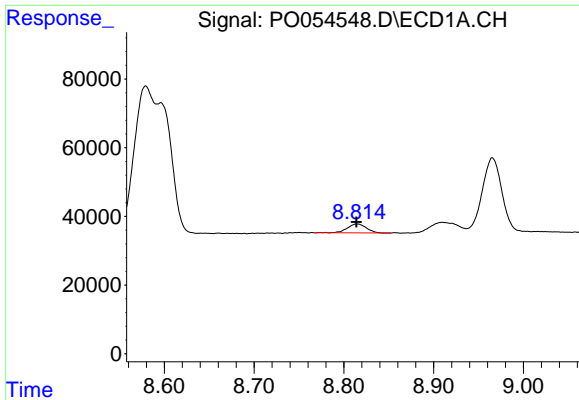
R.T.: 8.596 min  
 Delta R.T.: 0.000 min  
 Response: 425248  
 Conc: 59.55 ng/ml



#42 AR-1268-2

R.T.: 7.580 min  
 Delta R.T.: 0.000 min  
 Response: 1718984  
 Conc: 308.21 ng/ml

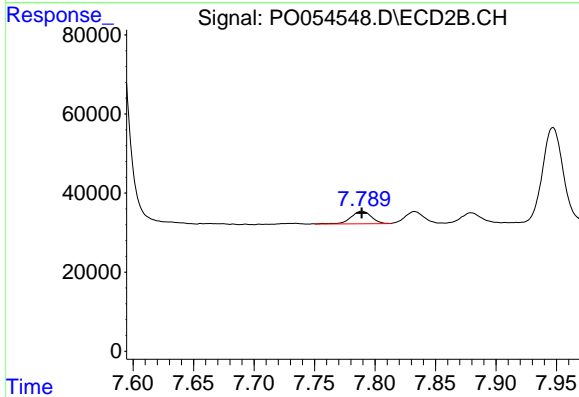




#43 AR-1268-3

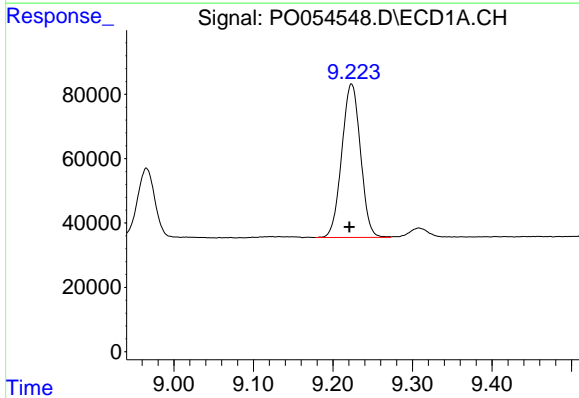
R.T.: 8.815 min  
 Delta R.T.: 0.000 min  
 Response: 38724  
 Conc: 6.53 ng/ml

Instrument :  
 ECD\_O  
 ClientSampleId :  
 AR1660CCC500



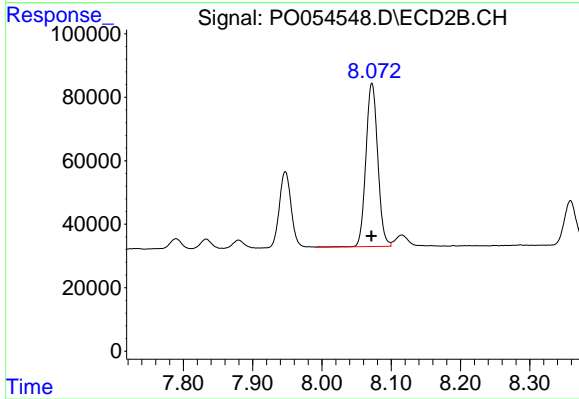
#43 AR-1268-3

R.T.: 7.789 min  
 Delta R.T.: 0.000 min  
 Response: 37623  
 Conc: 8.14 ng/ml



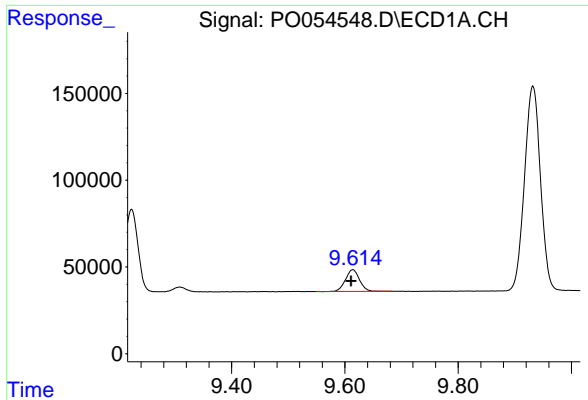
#44 AR-1268-4

R.T.: 9.223 min  
 Delta R.T.: 0.003 min  
 Response: 77987  
 Conc: 295.21 ng/ml



#44 AR-1268-4

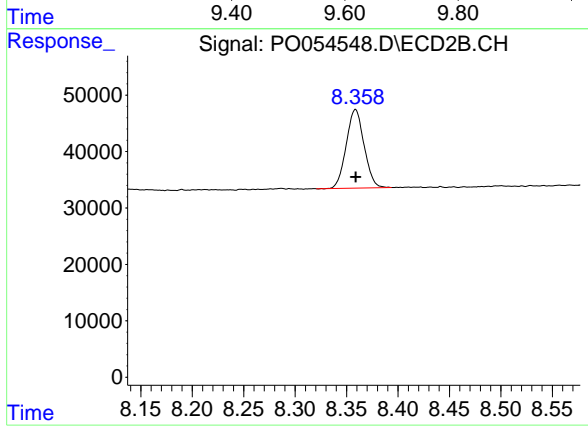
R.T.: 8.072 min  
 Delta R.T.: 0.000 min  
 Response: 61261  
 Conc: 302.86 ng/ml



#45 AR-1268-5

R.T.: 9.614 min  
Delta R.T.: 0.003 min  
Response: 215644  
Conc: 11.81 ng/ml

Instrument :  
ECD\_O  
ClientSampleId :  
AR1660CCC500



#45 AR-1268-5

R.T.: 8.359 min  
Delta R.T.: 0.000 min  
Response: 168273  
Conc: 13.87 ng/ml