

Data Path : Z:\pestpcbsrv\HPCHEM1\ECD\_0\Data\P0032519\  
 Data File : P0054589.D  
 Signal(s) : Signal #1: ECD1A.CH Signal #2: ECD2B.CH  
 Acq On : 25 Mar 2019 14:42  
 Operator : SM/SJ  
 Sample : AR1248ICC250  
 Misc :  
 ALS Vial : 18 Sample Multiplier: 1

Instrument :  
 ECD\_0  
 ClientSampleId :  
 AR1248ICC250

Integration File signal 1: autoint1.e  
 Integration File signal 2: autoint2.e  
 Quant Time: Mar 25 16:53:00 2019  
 Quant Method : Z:\pestpcbsrv\HPCHEM1\ECD\_0\methods\P0032519.M  
 Quant Title : GC EXTRACTABLES  
 QLast Update : Mon Mar 25 16:51:38 2019  
 Response via : Initial Calibration  
 Integrator: ChemStation 6890 Scale Mode: Small noise peaks clipped

Volume Inj. : 2 µl  
 Signal #1 Phase : ZB-MR1 Signal #2 Phase: ZB-MR2  
 Signal #1 Info : 30Mx0.32mmx 0.50µ Signal #2 Info : 30M x 0.32mm x 0.25µm

Compound	RT#1	RT#2	Resp#1	Resp#2	ng/ml	ng/ml
-----						
System Monitoring Compounds						
1) SA Tetrachlo...	4.304	3.622	809740	753801	26.368	27.044
2) SA Decachlor...	9.923	8.605	1183046	817298	27.189	27.517
Target Compounds						
21) L5 AR-1248-1	5.466	4.702	253182	225576	274.170	275.473
22) L5 AR-1248-2	5.737	4.937	374620	311403	277.959	281.361
23) L5 AR-1248-3	5.940	4.978	413398	320592	277.800	279.734
24) L5 AR-1248-4	6.342	5.149	482017	393414	276.012	281.087
25) L5 AR-1248-5	6.381	5.541	460885	382849	276.076	277.989
-----						

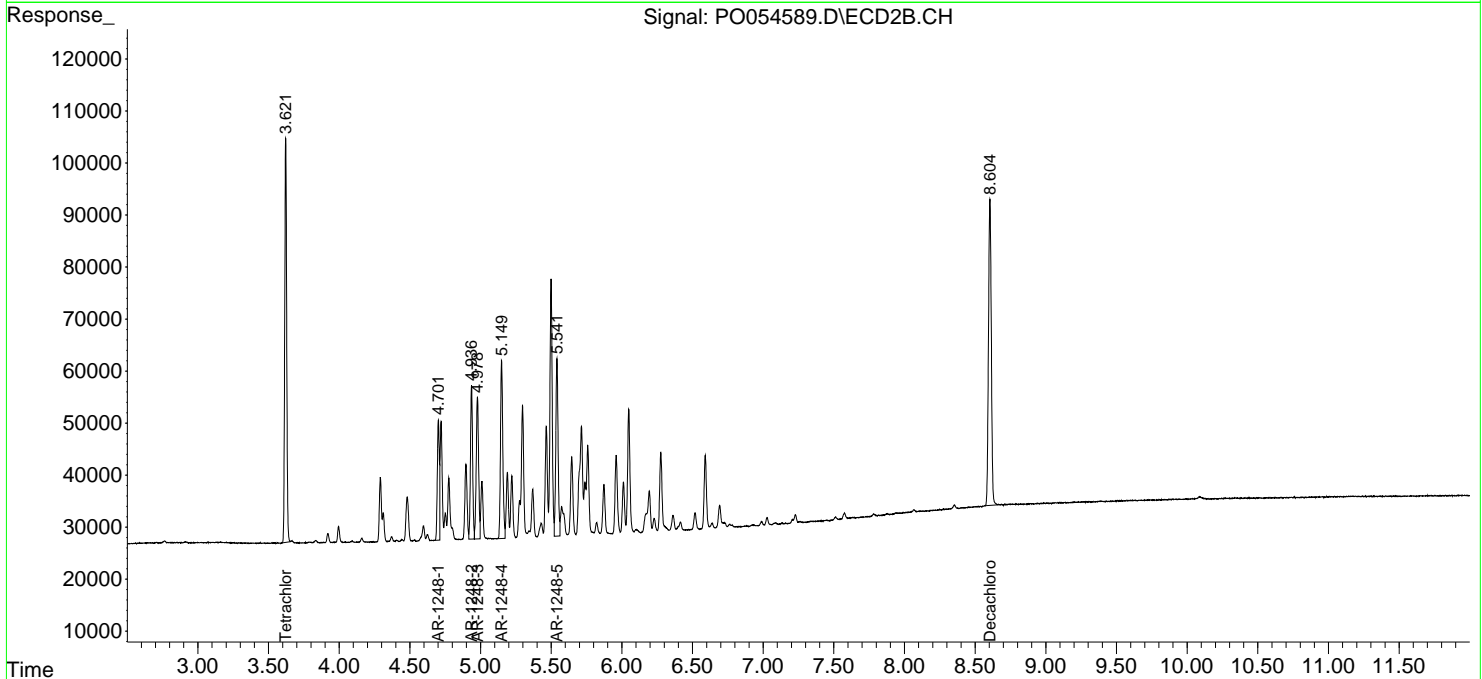
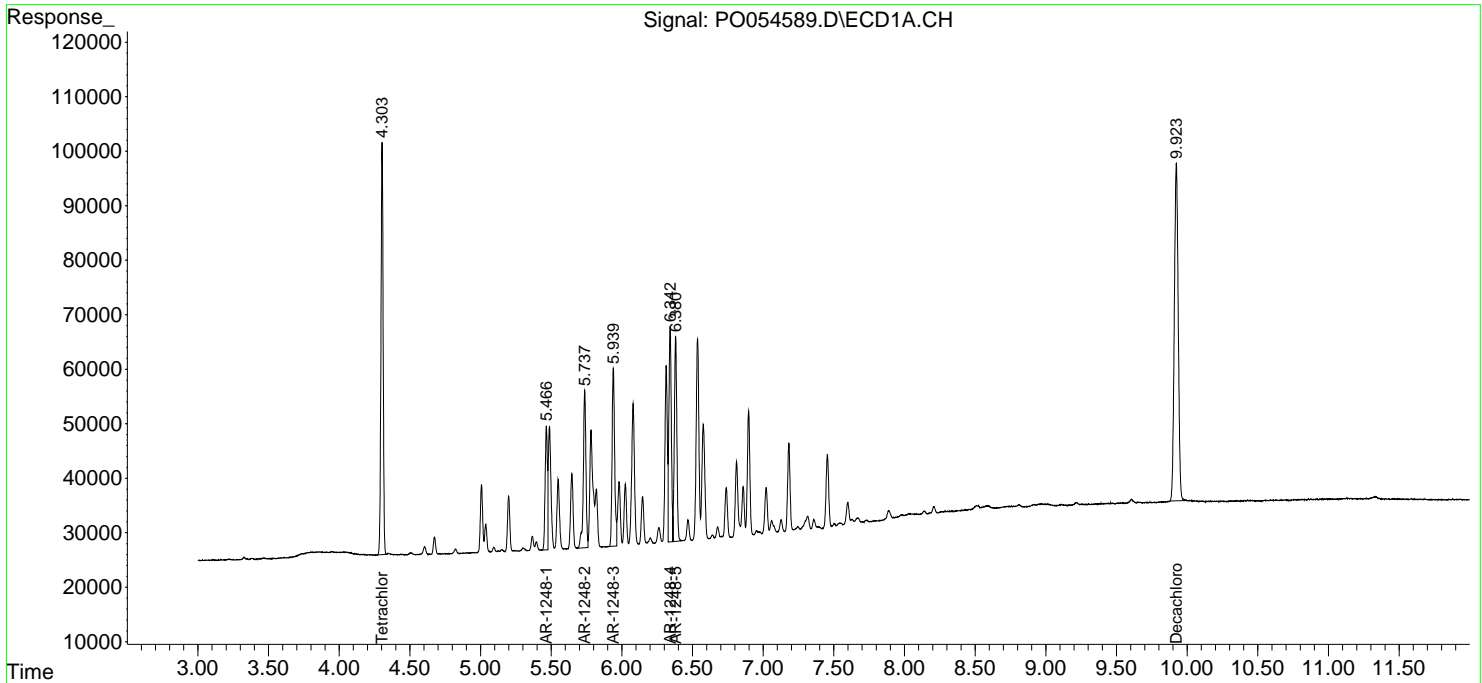
(f)=RT Delta > 1/2 Window (#)=Amounts differ by > 25% (m)=manual int.

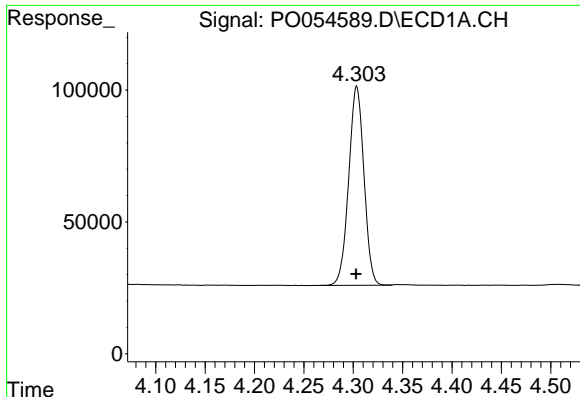
Data Path : Z:\pestpcbsrv\HPCHEM1\ECD\_0\Data\P0032519\  
 Data File : P0054589.D  
 Signal(s) : Signal #1: ECD1A.CH Signal #2: ECD2B.CH  
 Acq On : 25 Mar 2019 14:42  
 Operator : SM/SJ  
 Sample : AR1248ICC250  
 Misc :  
 ALS Vial : 18 Sample Multiplier: 1

Instrument :  
 ECD\_O  
 ClientSampleID :  
 AR1248ICC250

Integration File signal 1: autoint1.e  
 Integration File signal 2: autoint2.e  
 Quant Time: Mar 25 16:53:00 2019  
 Quant Method : Z:\pestpcbsrv\HPCHEM1\ECD\_0\methods\P0032519.M  
 Quant Title : GC EXTRACTABLES  
 QLast Update : Mon Mar 25 16:51:38 2019  
 Response via : Initial Calibration  
 Integrator: ChemStation 6890 Scale Mode: Small noise peaks clipped

Volume Inj. : 2 µl  
 Signal #1 Phase : ZB-MR1 Signal #2 Phase: ZB-MR2  
 Signal #1 Info : 30Mx0.32mmx 0.50µ Signal #2 Info : 30M x 0.32mm x 0.25µm

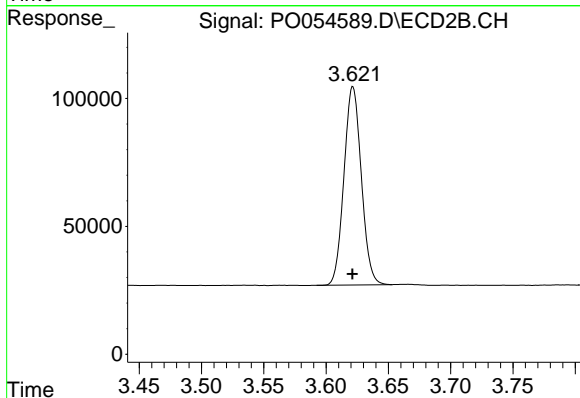




#1 Tetrachloro-m-xylene

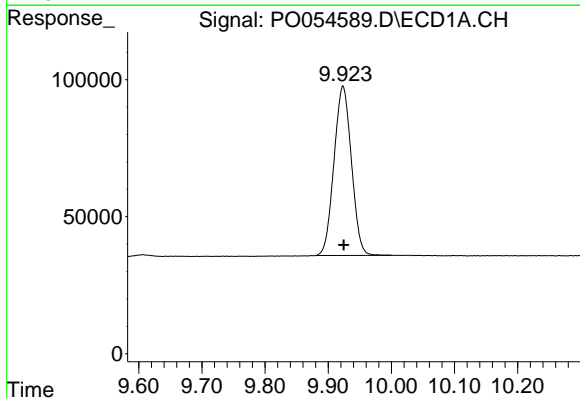
R.T.: 4.304 min  
 Delta R.T.: 0.000 min  
 Response: 809740  
 Conc: 26.37 ng/ml

Instrument :  
 ECD\_O  
 ClientSampleId :  
 AR1248ICC250



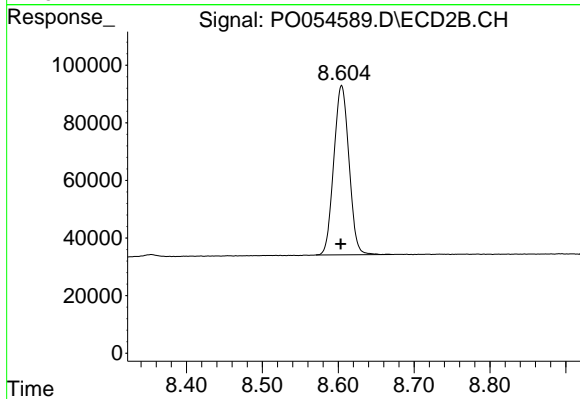
#1 Tetrachloro-m-xylene

R.T.: 3.622 min  
 Delta R.T.: 0.000 min  
 Response: 753801  
 Conc: 27.04 ng/ml



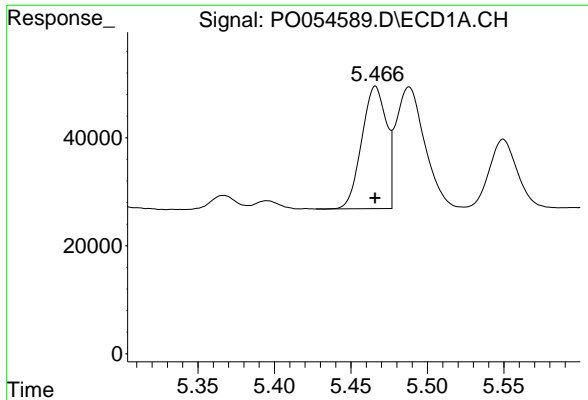
#2 Decachlorobiphenyl

R.T.: 9.923 min  
 Delta R.T.: -0.001 min  
 Response: 1183046  
 Conc: 27.19 ng/ml



#2 Decachlorobiphenyl

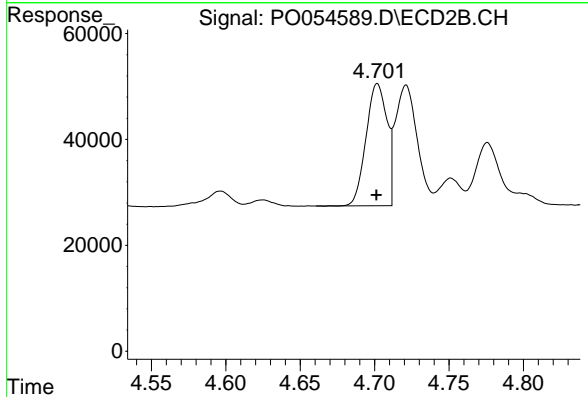
R.T.: 8.605 min  
 Delta R.T.: 0.001 min  
 Response: 817298  
 Conc: 27.52 ng/ml



#21 AR-1248-1

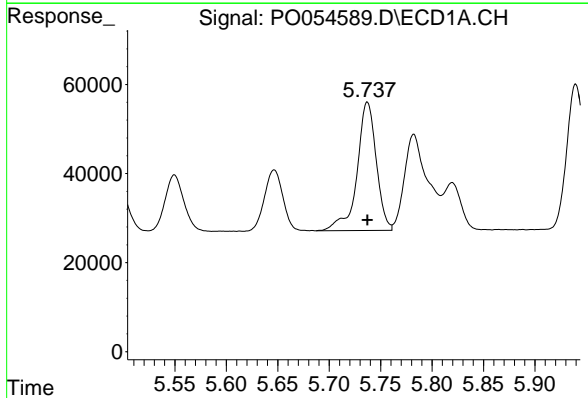
R.T.: 5.466 min  
 Delta R.T.: 0.000 min  
 Response: 253182  
 Conc: 274.17 ng/ml

Instrument :  
 ECD\_O  
 ClientSampled :  
 AR1248ICC250



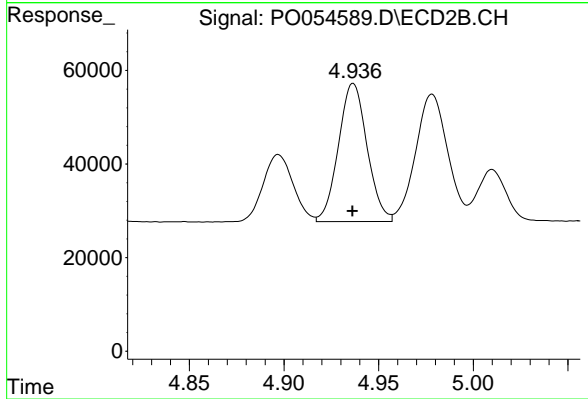
#21 AR-1248-1

R.T.: 4.702 min  
 Delta R.T.: 0.000 min  
 Response: 225576  
 Conc: 275.47 ng/ml



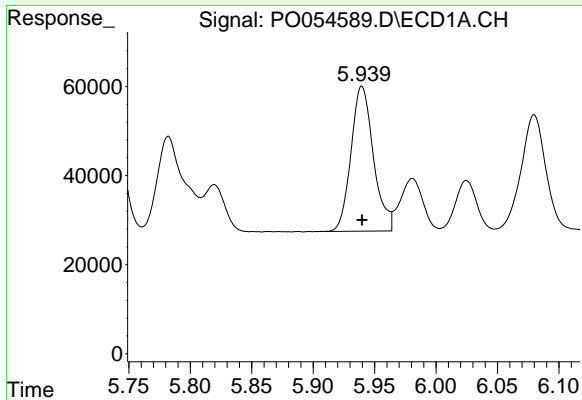
#22 AR-1248-2

R.T.: 5.737 min  
 Delta R.T.: 0.000 min  
 Response: 374620  
 Conc: 277.96 ng/ml



#22 AR-1248-2

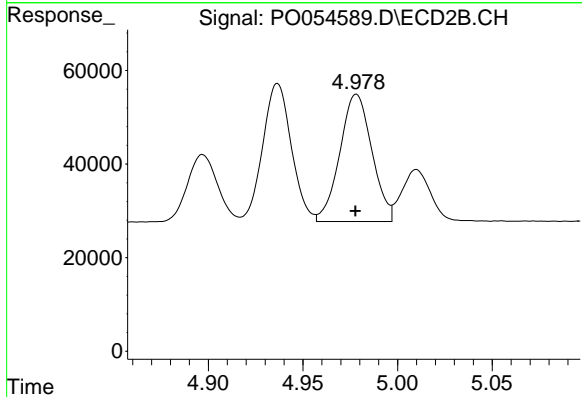
R.T.: 4.937 min  
 Delta R.T.: 0.000 min  
 Response: 311403  
 Conc: 281.36 ng/ml



#23 AR-1248-3

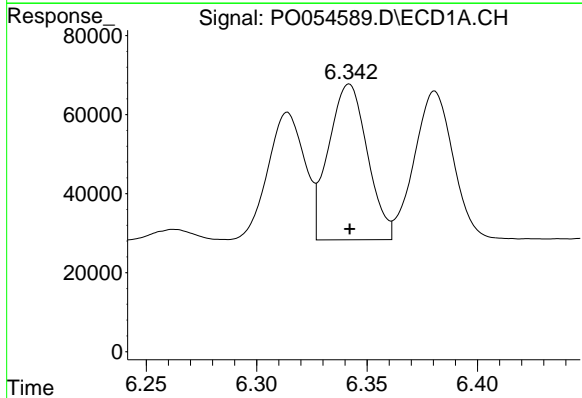
R.T.: 5.940 min  
 Delta R.T.: 0.000 min  
 Response: 413398  
 Conc: 277.80 ng/ml

Instrument :  
 ECD\_O  
 ClientSampleId :  
 AR1248ICC250



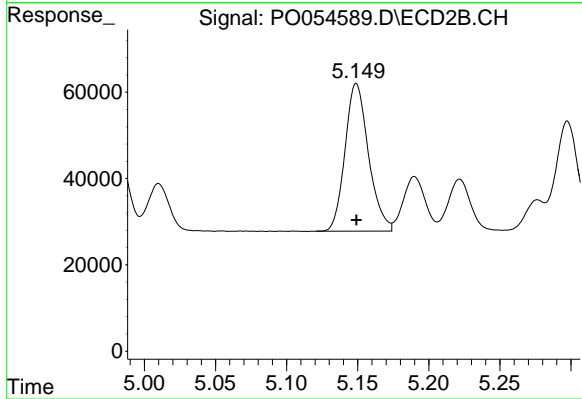
#23 AR-1248-3

R.T.: 4.978 min  
 Delta R.T.: 0.000 min  
 Response: 320592  
 Conc: 279.73 ng/ml



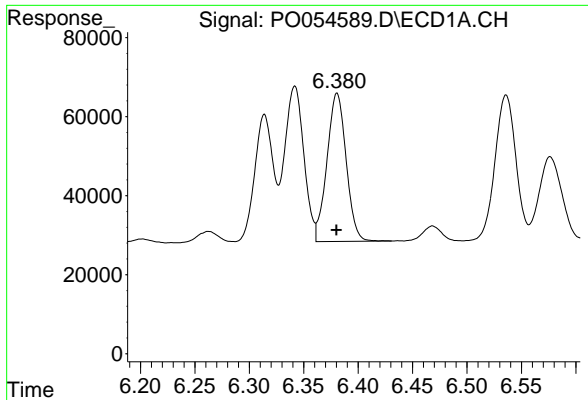
#24 AR-1248-4

R.T.: 6.342 min  
 Delta R.T.: 0.000 min  
 Response: 482017  
 Conc: 276.01 ng/ml



#24 AR-1248-4

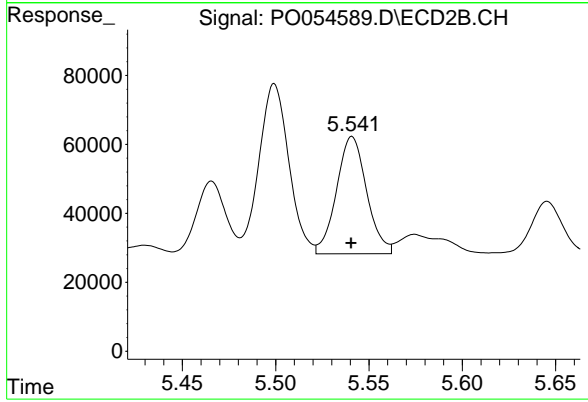
R.T.: 5.149 min  
 Delta R.T.: 0.000 min  
 Response: 393414  
 Conc: 281.09 ng/ml



#25 AR-1248-5

R.T.: 6.381 min  
Delta R.T.: 0.000 min  
Response: 460885  
Conc: 276.08 ng/ml

Instrument :  
ECD\_O  
ClientSampled :  
AR1248ICC250



#25 AR-1248-5

R.T.: 5.541 min  
Delta R.T.: 0.000 min  
Response: 382849  
Conc: 277.99 ng/ml