

Data Path : Z:\pestpcbsrv\HPCHEM1\ECD_0\Data\P0032519\
 Data File : P0054608.D
 Signal(s) : Signal #1: ECD1A.CH Signal #2: ECD2B.CH
 Acq On : 25 Mar 2019 20:10
 Operator : SM/SJ
 Sample : K1900-14
 Misc :
 ALS Vial : 13 Sample Multiplier: 1

Instrument :
 ECD_0
 ClientSampleId :
 BPS1-TT-MW309S-20190313

Integration File signal 1: autoint1.e
 Integration File signal 2: autoint2.e
 Quant Time: Mar 26 02:03:19 2019
 Quant Method : Z:\pestpcbsrv\HPCHEM1\ECD_0\methods\P0032519.M
 Quant Title : GC EXTRACTABLES
 QLast Update : Mon Mar 25 17:22:26 2019
 Response via : Initial Calibration
 Integrator: ChemStation 6890 Scale Mode: Small noise peaks clipped

Volume Inj. : 2 µl
 Signal #1 Phase : ZB-MR1 Signal #2 Phase: ZB-MR2
 Signal #1 Info : 30Mx0.32mmx 0.50µ Signal #2 Info : 30M x 0.32mm x 0.25µm

Compound	RT#1	RT#2	Resp#1	Resp#2	ng/ml	ng/ml

System Monitoring Compounds						
1) SA Tetrachlo...	4.304	3.621	717501	639860	20.674	20.051
2) SA Decachlor...	9.924	8.604	724940	514343	14.705	16.150
Target Compounds						
21) L5 AR-1248-1	5.466	4.701	22504	18119	22.512	20.642
22) L5 AR-1248-2	5.737	4.936	216082	183723	148.786	152.019
23) L5 AR-1248-3	5.940	4.976	144814	142831	90.669	114.467 #
24) L5 AR-1248-4	6.342	5.149	153801	139285	81.872	91.456
25) L5 AR-1248-5	6.380	5.540	180468	163099	100.663	109.398

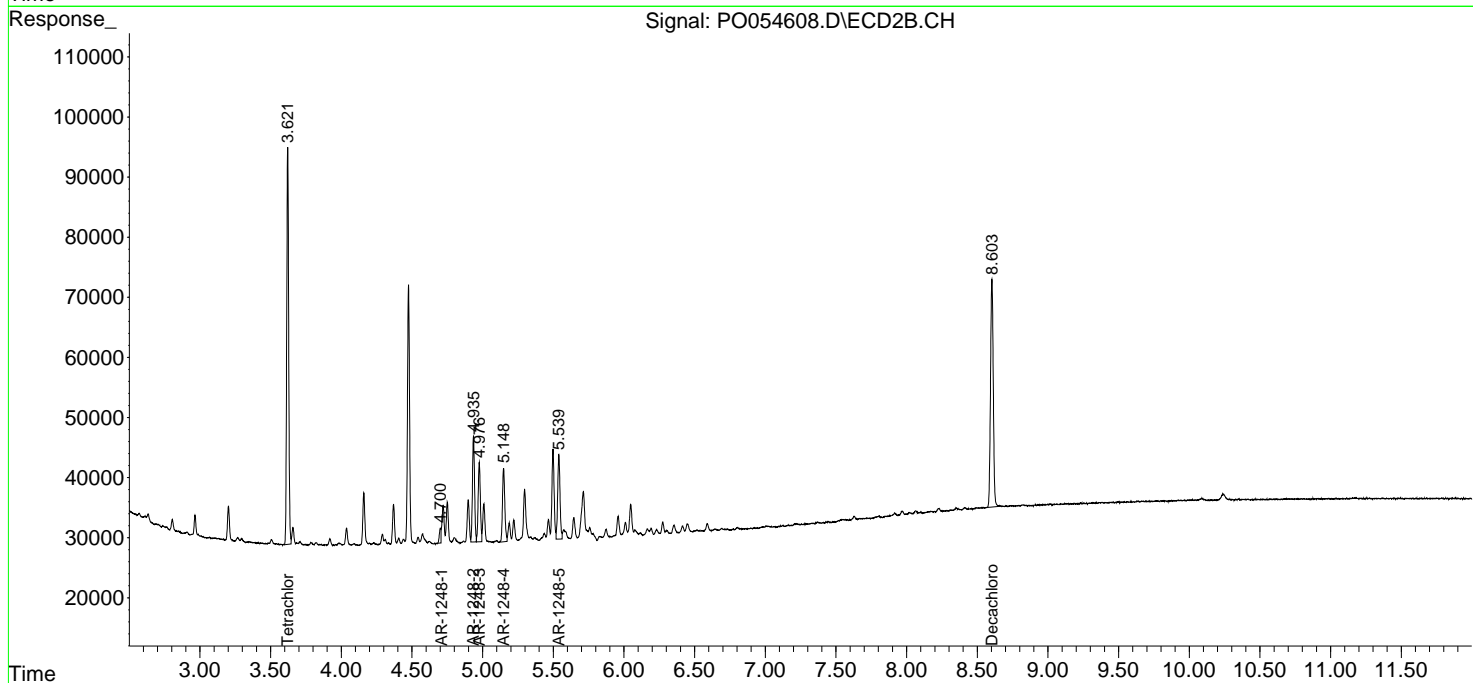
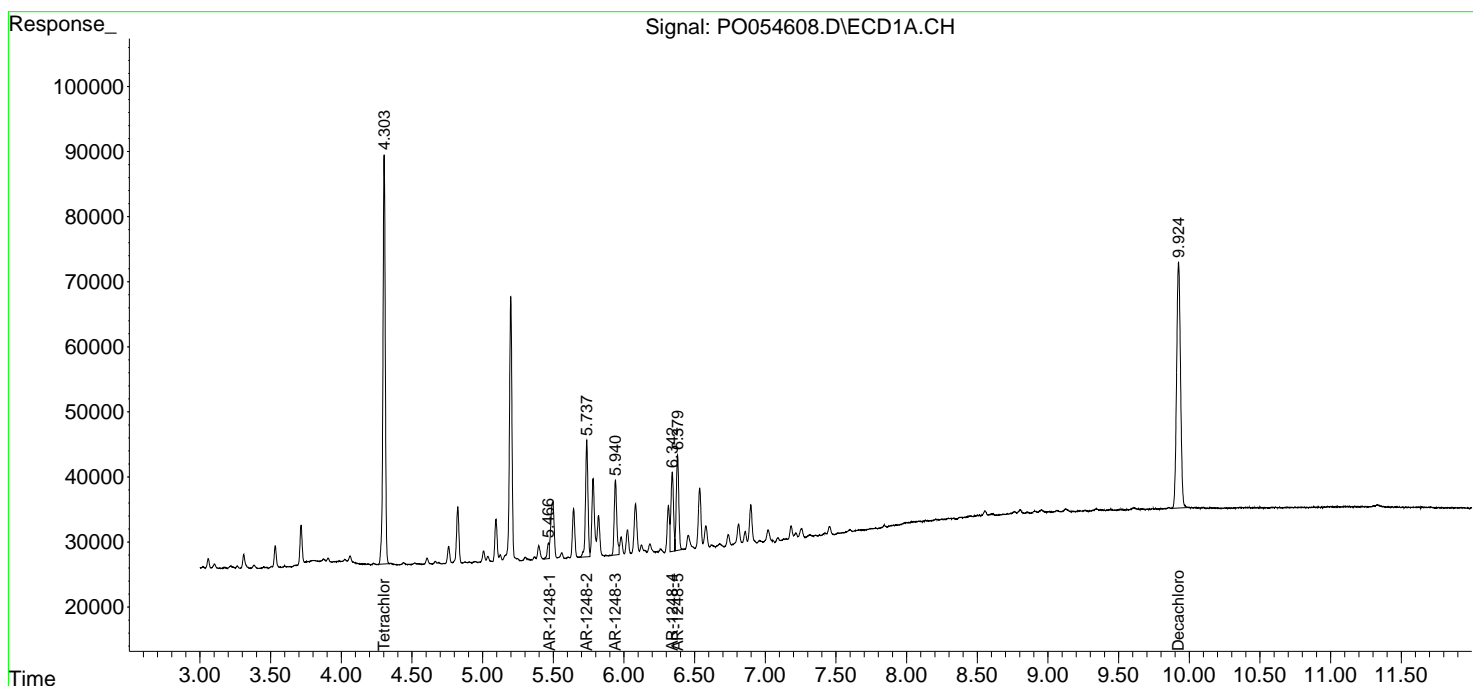
(f)=RT Delta > 1/2 Window (#)=Amounts differ by > 25% (m)=manual int.

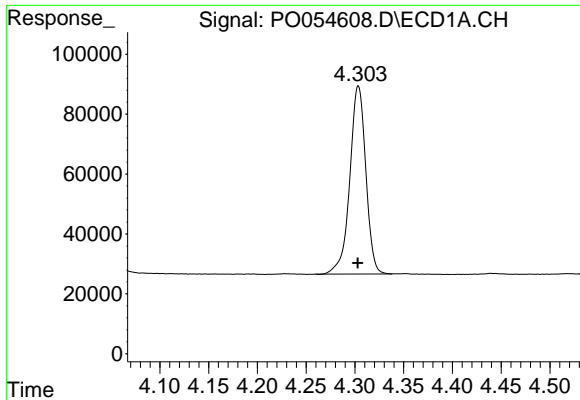
Data Path : Z:\pestpcbsrv\HPCHEM1\ECD_0\Data\P0032519\
 Data File : P0054608.D
 Signal(s) : Signal #1: ECD1A.CH Signal #2: ECD2B.CH
 Acq On : 25 Mar 2019 20:10
 Operator : SM/SJ
 Sample : K1900-14
 Misc :
 ALS Vial : 13 Sample Multiplier: 1

Instrument :
 ECD_O
 ClientSampleId :
 BPS1-TT-MW309S-20190313

Integration File signal 1: autoint1.e
 Integration File signal 2: autoint2.e
 Quant Time: Mar 26 02:03:19 2019
 Quant Method : Z:\pestpcbsrv\HPCHEM1\ECD_0\methods\P0032519.M
 Quant Title : GC EXTRACTABLES
 QLast Update : Mon Mar 25 17:22:26 2019
 Response via : Initial Calibration
 Integrator: ChemStation 6890 Scale Mode: Small noise peaks clipped

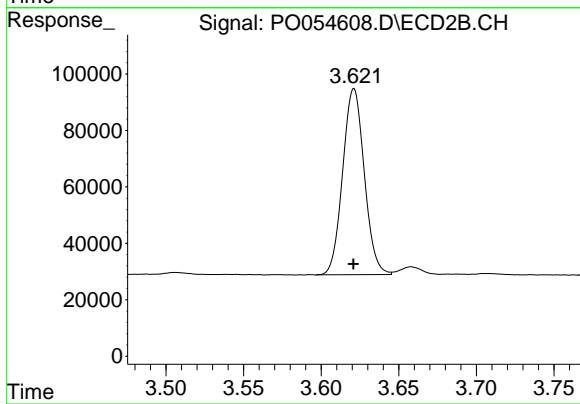
Volume Inj. : 2 µl
 Signal #1 Phase : ZB-MR1 Signal #2 Phase: ZB-MR2
 Signal #1 Info : 30Mx0.32mmx 0.50µ Signal #2 Info : 30M x 0.32mm x 0.25µm



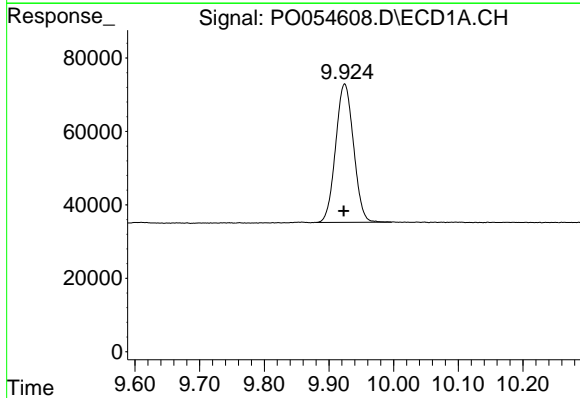


#1 Tetrachloro-m-xylene
 R.T.: 4.304 min
 Delta R.T.: 0.000 min
 Response: 717501
 Conc: 20.67 ng/ml

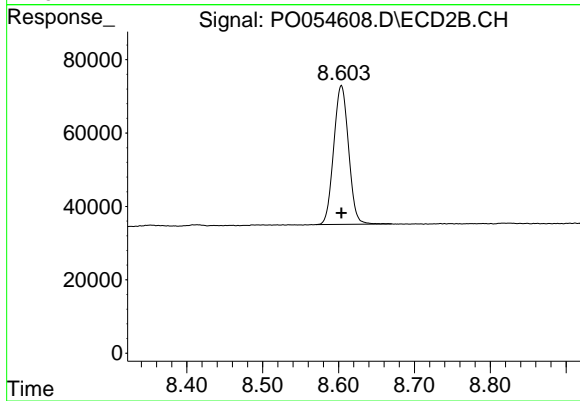
Instrument :
 ECD_O
 ClientSampleId :
 BPS1-TT-MW309S-20190313



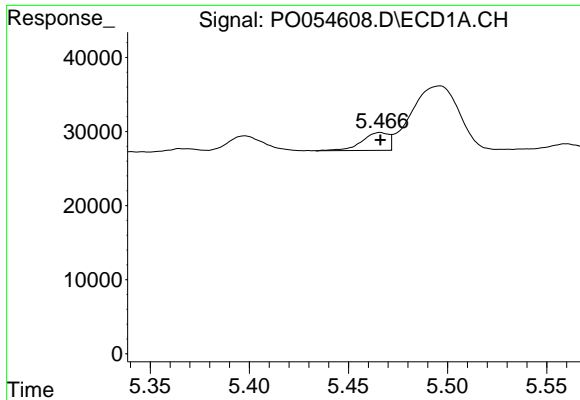
#1 Tetrachloro-m-xylene
 R.T.: 3.621 min
 Delta R.T.: 0.000 min
 Response: 639860
 Conc: 20.05 ng/ml



#2 Decachlorobiphenyl
 R.T.: 9.924 min
 Delta R.T.: 0.001 min
 Response: 724940
 Conc: 14.71 ng/ml



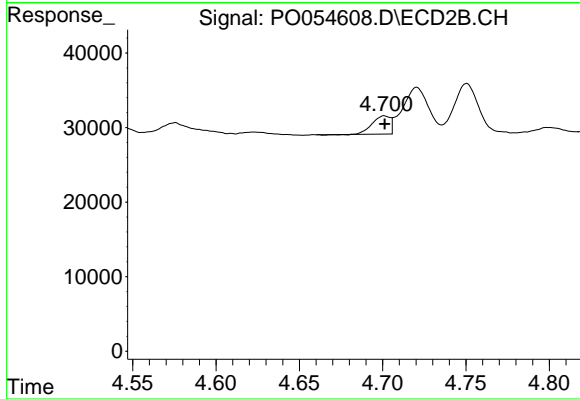
#2 Decachlorobiphenyl
 R.T.: 8.604 min
 Delta R.T.: 0.000 min
 Response: 514343
 Conc: 16.15 ng/ml



#21 AR-1248-1

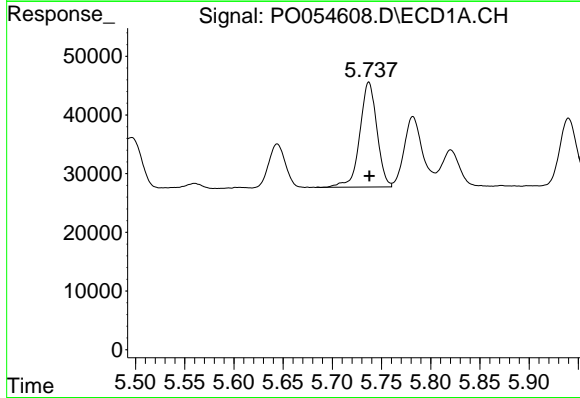
R.T.: 5.466 min
 Delta R.T.: 0.000 min
 Response: 22504
 Conc: 22.51 ng/ml

Instrument :
 ECD_O
ClientSampleId :
 BPS1-TT-MW309S-20190313



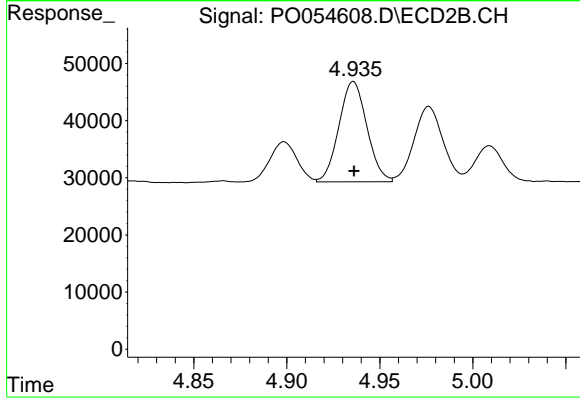
#21 AR-1248-1

R.T.: 4.701 min
 Delta R.T.: 0.000 min
 Response: 18119
 Conc: 20.64 ng/ml



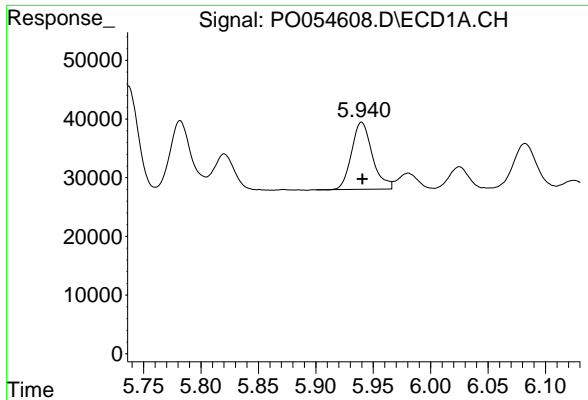
#22 AR-1248-2

R.T.: 5.737 min
 Delta R.T.: 0.000 min
 Response: 216082
 Conc: 148.79 ng/ml



#22 AR-1248-2

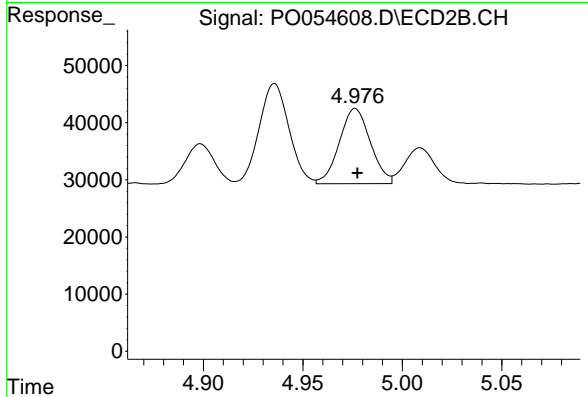
R.T.: 4.936 min
 Delta R.T.: 0.000 min
 Response: 183723
 Conc: 152.02 ng/ml



#23 AR-1248-3

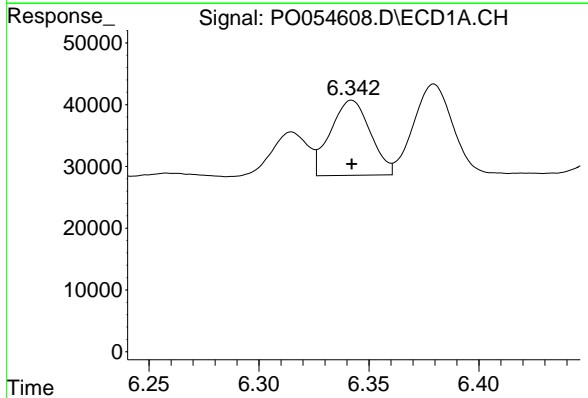
R.T.: 5.940 min
 Delta R.T.: 0.000 min
 Response: 144814
 Conc: 90.67 ng/ml

Instrument :
 ECD_O
ClientSampleId :
 BPS1-TT-MW309S-20190313



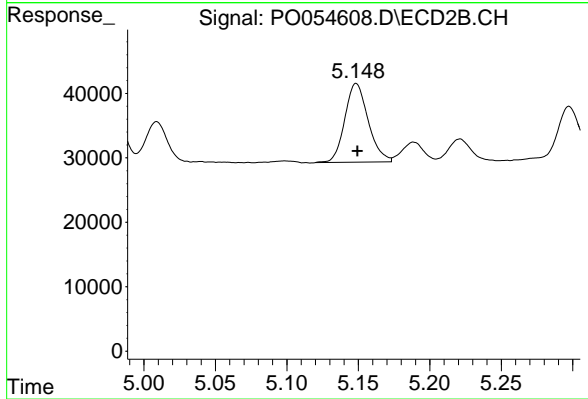
#23 AR-1248-3

R.T.: 4.976 min
 Delta R.T.: 0.000 min
 Response: 142831
 Conc: 114.47 ng/ml



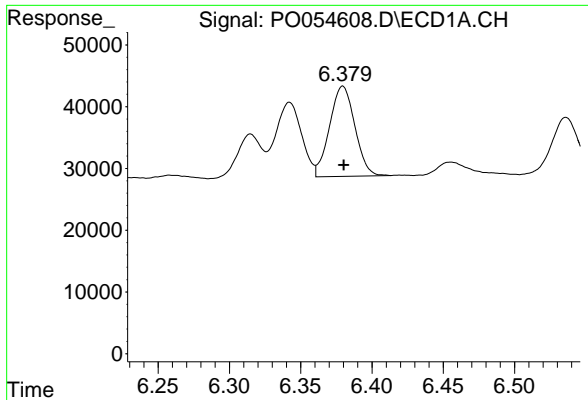
#24 AR-1248-4

R.T.: 6.342 min
 Delta R.T.: 0.000 min
 Response: 153801
 Conc: 81.87 ng/ml



#24 AR-1248-4

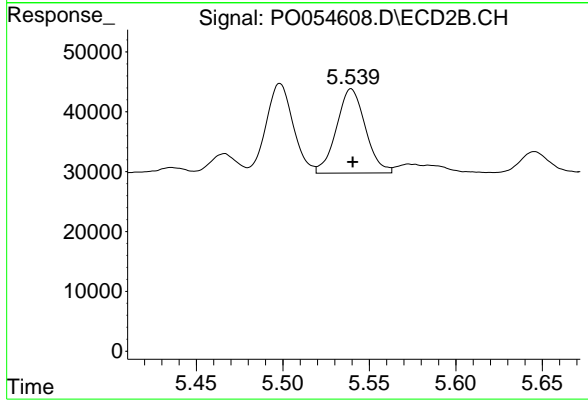
R.T.: 5.149 min
 Delta R.T.: 0.000 min
 Response: 139285
 Conc: 91.46 ng/ml



#25 AR-1248-5

R.T.: 6.380 min
Delta R.T.: 0.000 min
Response: 180468
Conc: 100.66 ng/ml

Instrument :
ECD_O
ClientSampleId :
BPS1-TT-MW309S-20190313



#25 AR-1248-5

R.T.: 5.540 min
Delta R.T.: 0.000 min
Response: 163099
Conc: 109.40 ng/ml