

Data Path : P:\HPCHEM1\ECD_O\Data\PO032918\
 Data File : PO043371.D
 Signal(s) : Signal #1: ECD1A.CH Signal #2: ECD2B.CH
 Acq On : 29 Mar 2018 8:48
 Operator : SM/UA
 Sample : PB107740BL
 Misc :
 ALS Vial : 4 Sample Multiplier: 1

Instrument :
 ECD_O
 ClientSampleId :
 PB107740BL

Integration File signal 1: autoint1.e
 Integration File signal 2: autoint2.e
 Quant Time: Mar 29 09:32:53 2018
 Quant Method : P:\HPCHEM1\ECD_O\methods\PO032318.M
 Quant Title : GC EXTRACTABLES
 QLast Update : Fri Mar 23 05:22:35 2018
 Response via : Initial Calibration
 Integrator: ChemStation 6890 Scale Mode: Small noise peaks clipped

Volume Inj. : 2 µl
 Signal #1 Phase : ZB-MR1 Signal #2 Phase: ZB-MR2
 Signal #1 Info : 30Mx0.32mmx 0.50µ Signal #2 Info : 30M x 0.32mm x 0.25µm

Compound	RT#1	RT#2	Resp#1	Resp#2	ng/ml	ng/ml

System Monitoring Compounds						
1) SA Tetrachlo...	4.081	3.327	4543528	5581631	21.442	19.070
2) SA Decachlor...	9.435	8.098	5414291	7047626	22.293	19.707
Target Compounds						
12) L3 AR-1232-2	5.148	0.000	195237	0	60.350	N.D. #
28) L6 AR-1254-3	6.604	0.000	492437	0	27.311	N.D. #
32) L7 AR-1260-2	0.000	5.962	0	587014	N.D.	18.163 #
36) L8 AR-1262-1	0.000	5.962	0	587014	N.D.	25.570 #

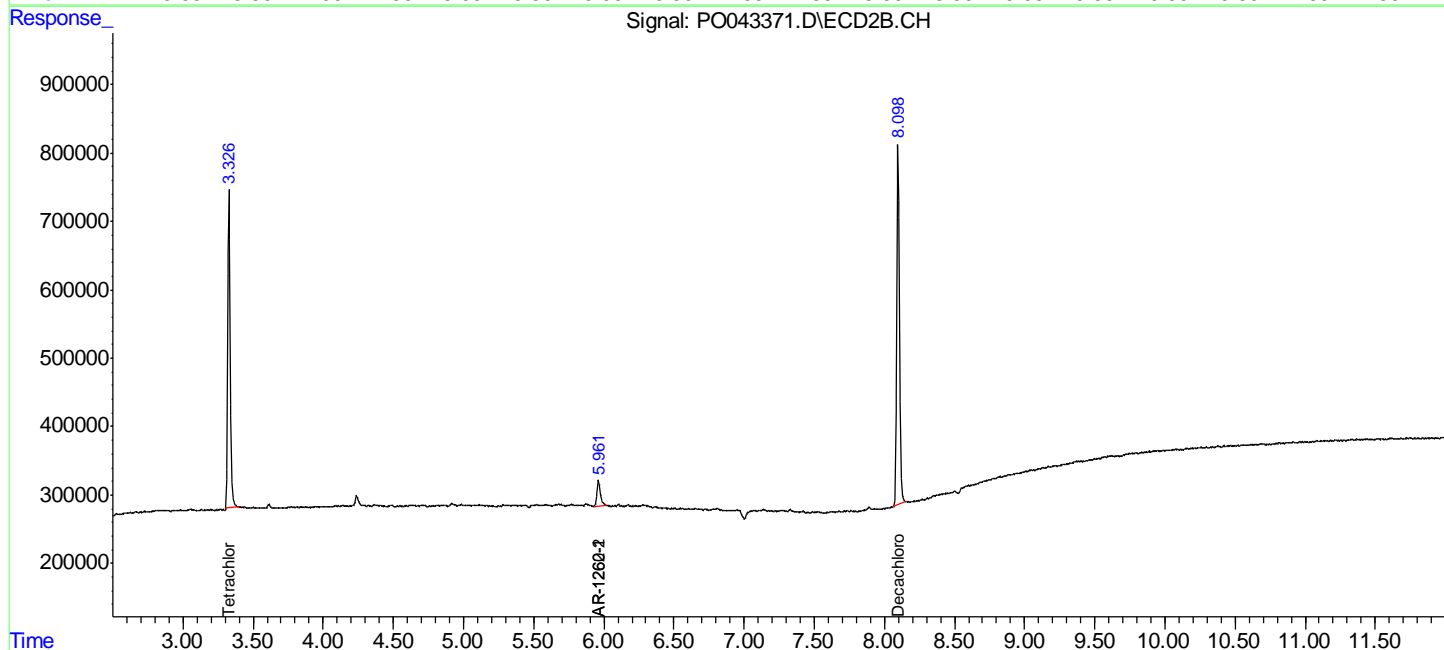
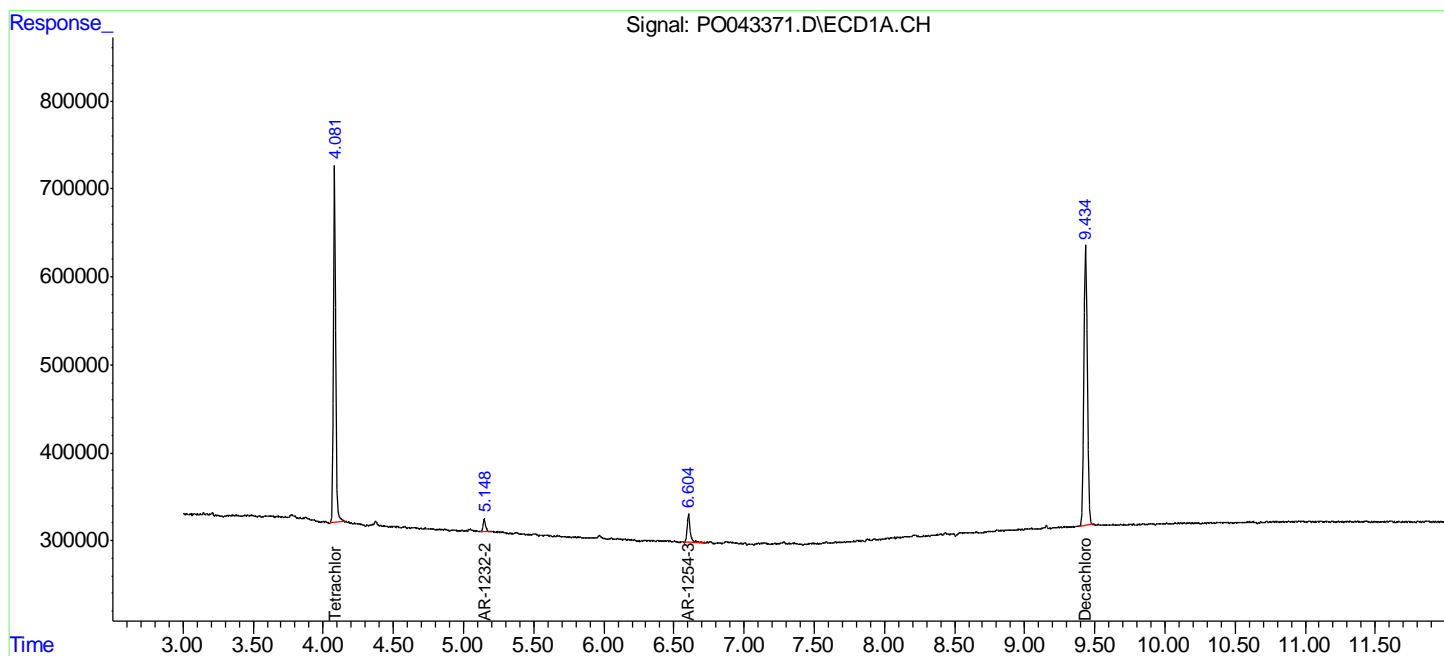
(f)=RT Delta > 1/2 Window (#)=Amounts differ by > 25% (m)=manual int.

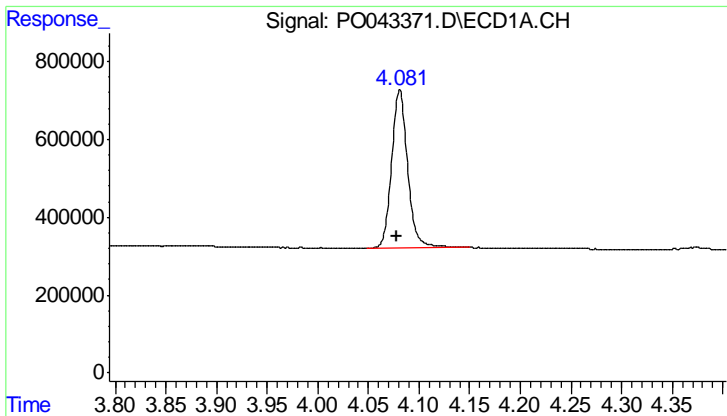
Data Path : P:\HPCHEM1\ECD_O\Data\PO032918\
 Data File : PO043371.D
 Signal(s) : Signal #1: ECD1A.CH Signal #2: ECD2B.CH
 Acq On : 29 Mar 2018 8:48
 Operator : SM/UA
 Sample : PB107740BL
 Misc :
 ALS Vial : 4 Sample Multiplier: 1

Instrument :
 ECD_O
 ClientSampled :
 PB107740BL

Integration File signal 1: autoint1.e
 Integration File signal 2: autoint2.e
 Quant Time: Mar 29 09:32:53 2018
 Quant Method : P:\HPCHEM1\ECD_O\methods\PO032318.M
 Quant Title : GC EXTRACTABLES
 QLast Update : Fri Mar 23 05:22:35 2018
 Response via : Initial Calibration
 Integrator: ChemStation 6890 Scale Mode: Small noise peaks clipped

Volume Inj. : 2 µl
 Signal #1 Phase : ZB-MR1 Signal #2 Phase: ZB-MR2
 Signal #1 Info : 30Mx0.32mmx 0.50µ Signal #2 Info : 30M x 0.32mm x 0.25µm

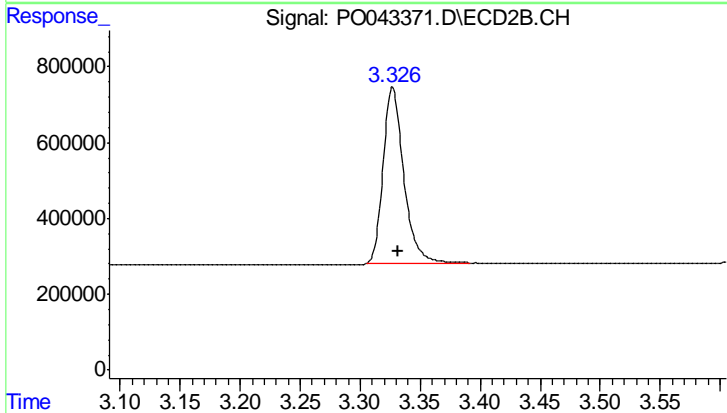




#1 Tetrachloro-m-xylene

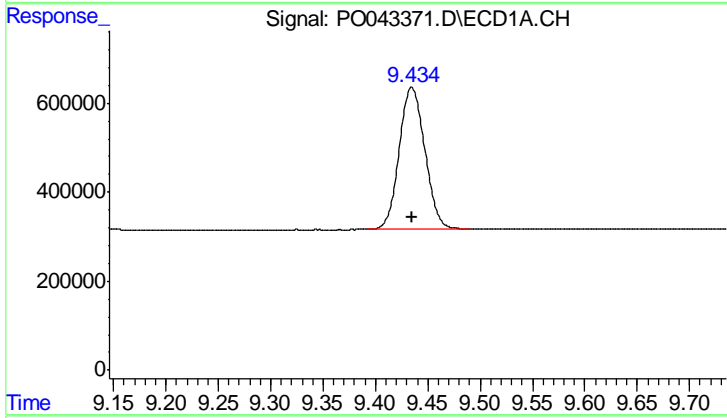
R.T.: 4.081 min
 Delta R.T.: 0.003 min
 Response: 4543528
 Conc: 21.44 ng/ml

Instrument :
 ECD_O
 ClientSampleId :
 PB107740BL



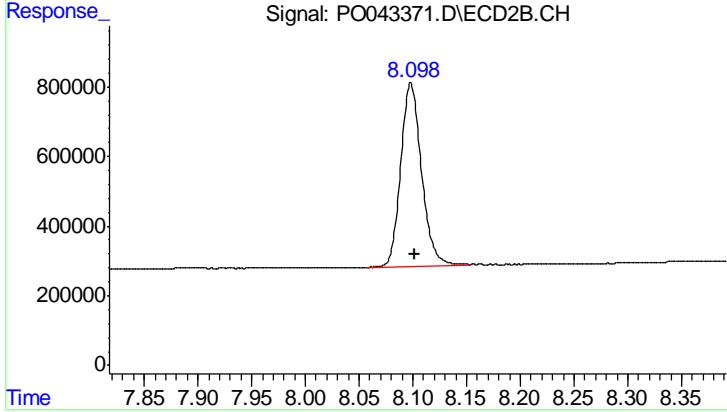
#1 Tetrachloro-m-xylene

R.T.: 3.327 min
 Delta R.T.: -0.005 min
 Response: 5581631
 Conc: 19.07 ng/ml



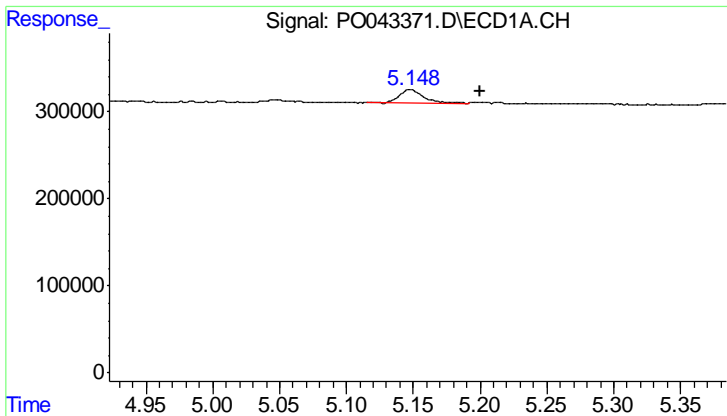
#2 Decachlorobiphenyl

R.T.: 9.435 min
 Delta R.T.: 0.000 min
 Response: 5414291
 Conc: 22.29 ng/ml



#2 Decachlorobiphenyl

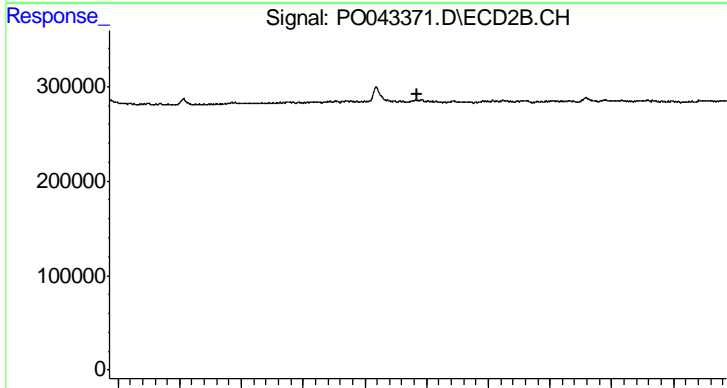
R.T.: 8.098 min
 Delta R.T.: -0.004 min
 Response: 7047626
 Conc: 19.71 ng/ml



#12 AR-1232-2

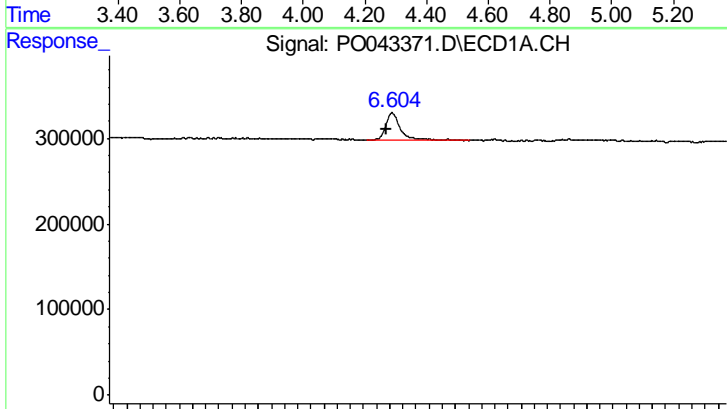
R.T.: 5.148 min
 Delta R.T.: -0.052 min
 Response: 195237
 Conc: 60.35 ng/ml

Instrument :
 ECD_O
 ClientSampleId :
 PB107740BL



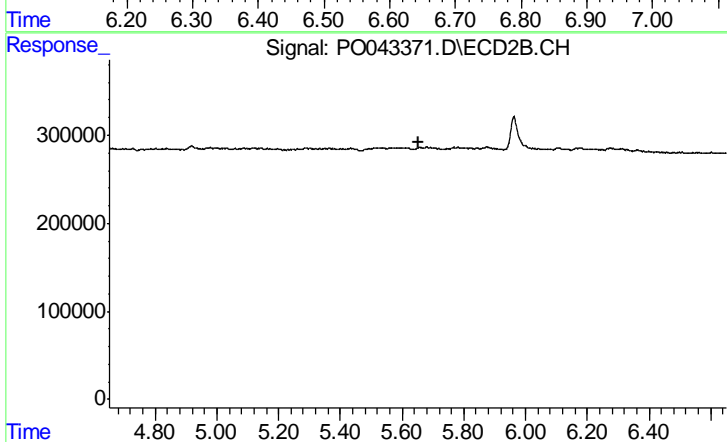
#12 AR-1232-2

R.T.: 0.000 min
 Exp R.T. : 4.372 min
 Response: 0
 Conc: N.D.



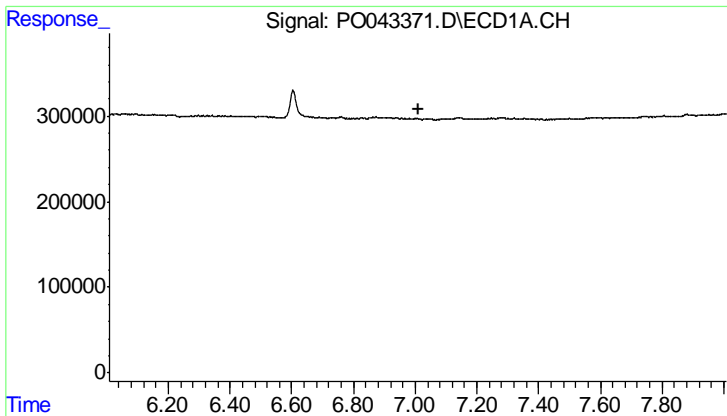
#28 AR-1254-3

R.T.: 6.604 min
 Delta R.T.: 0.008 min
 Response: 492437
 Conc: 27.31 ng/ml



#28 AR-1254-3

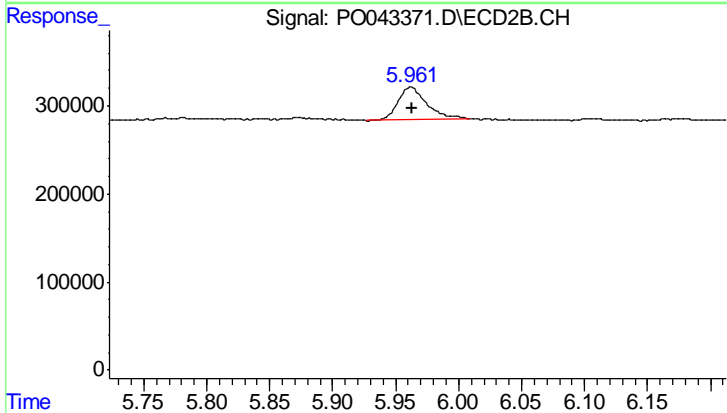
R.T.: 0.000 min
 Exp R.T. : 5.652 min
 Response: 0
 Conc: N.D.



#32 AR-1260-2

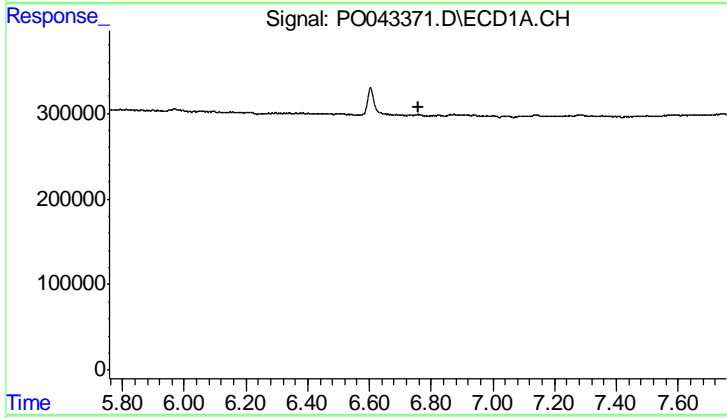
R.T.: 0.000 min
 Exp R.T.: 7.009 min
 Response: 0
 Conc: N.D.

Instrument :
 ECD_O
 ClientSampleId :
 PB107740BL



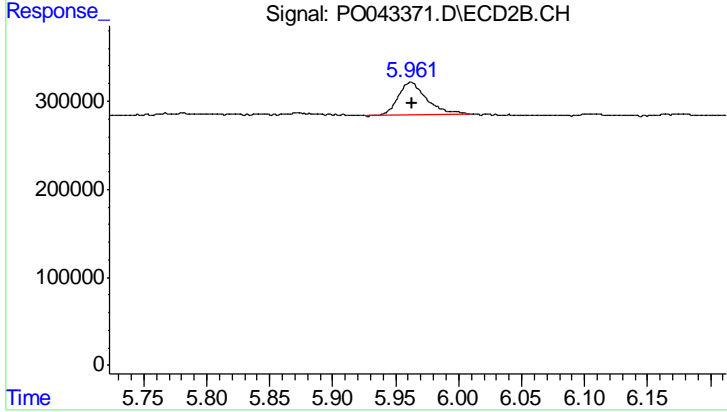
#32 AR-1260-2

R.T.: 5.962 min
 Delta R.T.: 0.000 min
 Response: 587014
 Conc: 18.16 ng/ml



#36 AR-1262-1

R.T.: 0.000 min
 Exp R.T.: 6.757 min
 Response: 0
 Conc: N.D.



#36 AR-1262-1

R.T.: 5.962 min
 Delta R.T.: 0.000 min
 Response: 587014
 Conc: 25.57 ng/ml