

Data Path : Z:\pestpcbsrv\HPCHEM1\ECD\_0\Data\P0032919\  
 Data File : P0054740.D  
 Signal(s) : Signal #1: ECD1A.CH Signal #2: ECD2B.CH  
 Acq On : 29 Mar 2019 12:31  
 Operator : SM/SJ  
 Sample : AR1660CCC500  
 Misc :  
 ALS Vial : 3 Sample Multiplier: 1

Instrument :  
 ECD\_0  
 ClientSampleId :  
 AR1660CCC500

Manual Integrations  
 APPROVED

Sohil  
 4/1/2019 5:15:21 PM

Integration File signal 1: autoint1.e  
 Integration File signal 2: autoint2.e  
 Quant Time: Mar 29 13:41:06 2019  
 Quant Method : Z:\pestpcbsrv\HPCHEM1\ECD\_0\methods\P0032519.M  
 Quant Title : GC EXTRACTABLES  
 QLast Update : Mon Mar 25 17:22:26 2019  
 Response via : Initial Calibration  
 Integrator: ChemStation 6890 Scale Mode: Small noise peaks clipped

Volume Inj. : 2 µl  
 Signal #1 Phase : ZB-MR1 Signal #2 Phase: ZB-MR2  
 Signal #1 Info : 30Mx0.32mmx 0.50µ Signal #2 Info : 30M x 0.32mm x 0.25µm

Compound	RT#1	RT#2	Resp#1	Resp#2	ng/ml	ng/ml
-----						
System Monitoring Compounds						
1) SA Tetrachlo...	4.302	3.618	1826182	1715105	52.620	53.744
2) SA Decachlor...	9.922	8.596	2512246	1700694	50.961	53.400
Target Compounds						
3) L1 AR-1016-1	5.465	4.697	945746	853231	525.581	539.543
4) L1 AR-1016-2	5.487	4.717	1334442	1155647	537.285	539.333
5) L1 AR-1016-3	5.548	4.892	850247	658414	540.441	544.944
6) L1 AR-1016-4	5.647	4.932	715118	543493	548.791	537.827
7) L1 AR-1016-5	5.939	5.145	764262	723377	572.799	554.994m
31) L7 AR-1260-1	7.059	6.173	1454342	1301038	578.809	566.144
32) L7 AR-1260-2	7.315	6.359	1766757	1573182	569.274	571.493
33) L7 AR-1260-3	7.673	6.513	1357439	1500646	553.071	582.119
34) L7 AR-1260-4	7.897	6.983	1558577	1206158	563.475	566.759
35) L7 AR-1260-5	8.207	7.222	2959001	2672884	533.287	558.096

(f)=RT Delta > 1/2 Window (#)=Amounts differ by > 25% (m)=manual int.

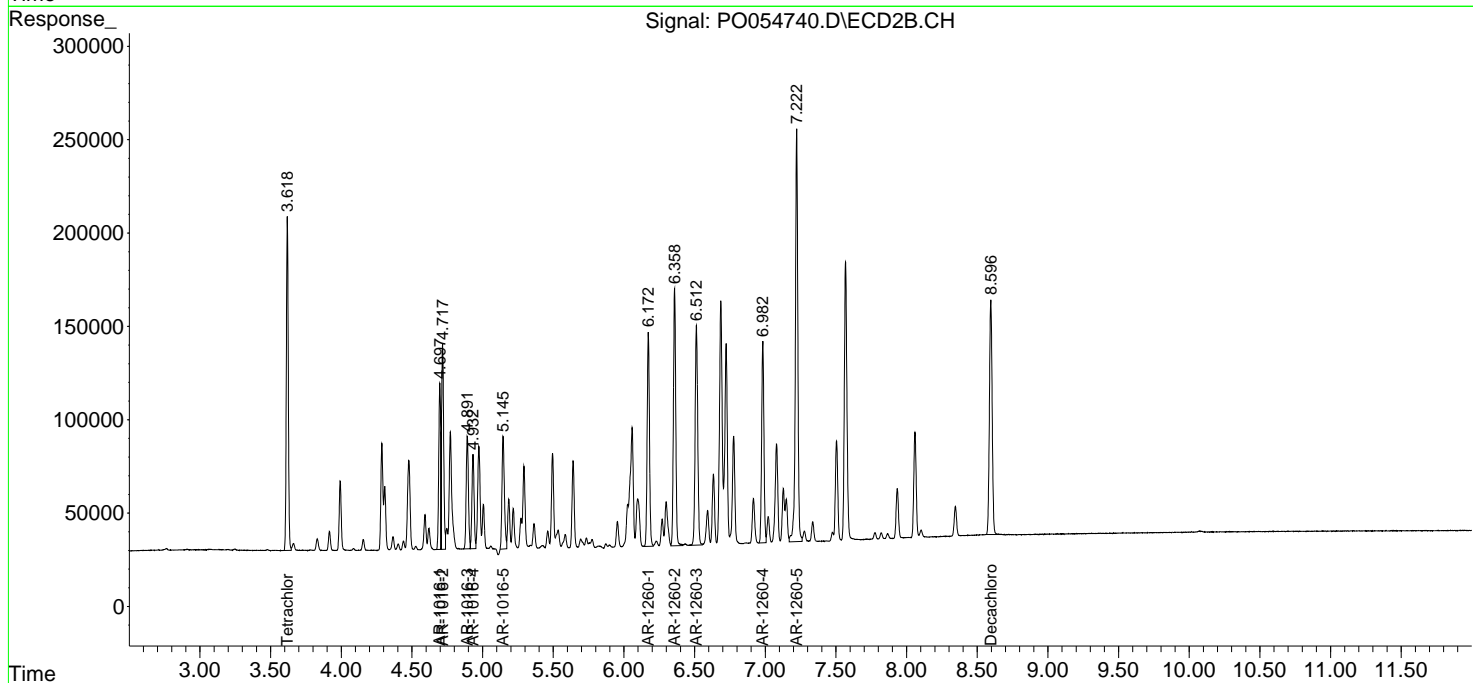
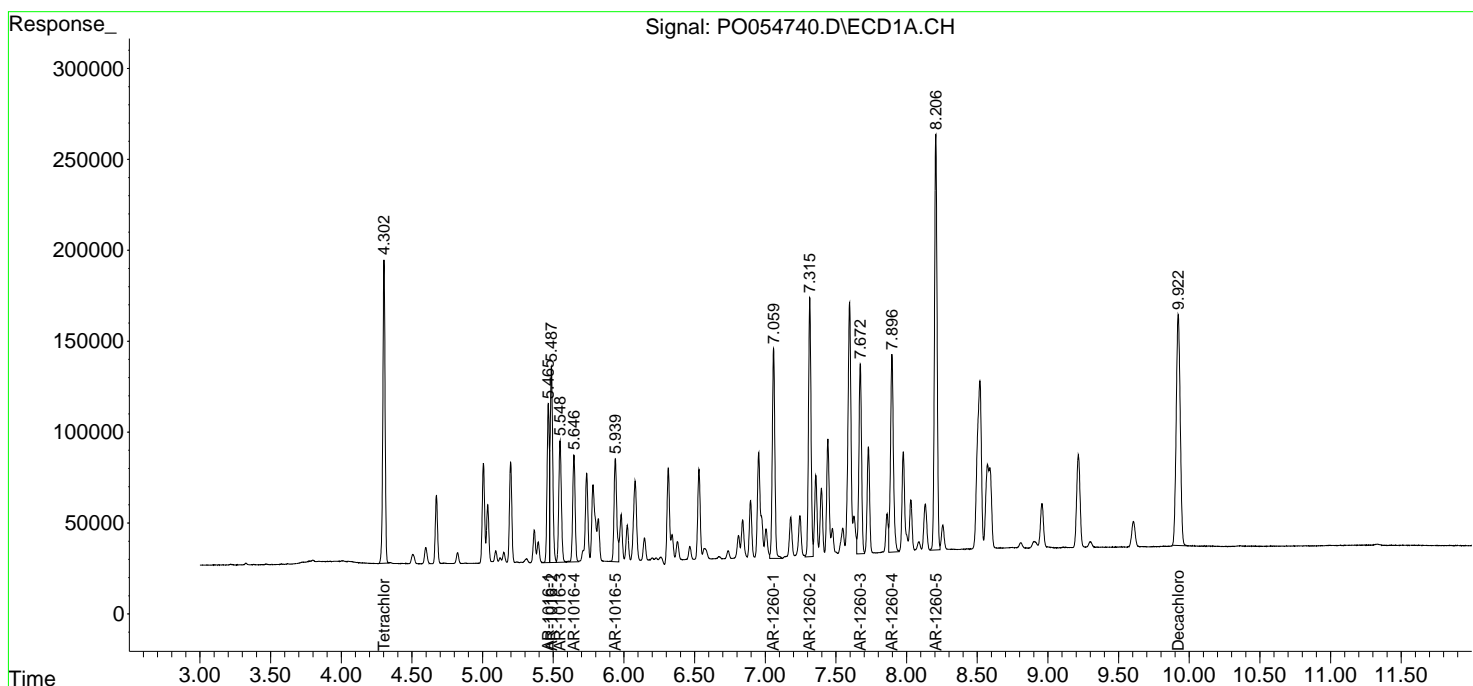
Data Path : Z:\pestpcbsrv\HPCHEM1\ECD\_0\Data\P0032919\  
 Data File : P0054740.D  
 Signal(s) : Signal #1: ECD1A.CH Signal #2: ECD2B.CH  
 Acq On : 29 Mar 2019 12:31  
 Operator : SM/SJ  
 Sample : AR1660CCC500  
 Misc :  
 ALS Vial : 3 Sample Multiplier: 1

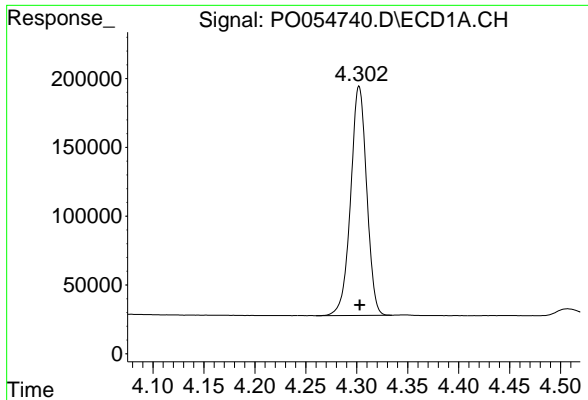
Instrument :  
 ECD\_O  
 ClientSampled :  
 AR1660CCC500

Manual Integrations  
**APPROVED**  
 Sohil  
 4/1/2019 5:15:21 PM

Integration File signal 1: autoint1.e  
 Integration File signal 2: autoint2.e  
 Quant Time: Mar 29 13:41:06 2019  
 Quant Method : Z:\pestpcbsrv\HPCHEM1\ECD\_0\methods\P0032519.M  
 Quant Title : GC EXTRACTABLES  
 QLast Update : Mon Mar 25 17:22:26 2019  
 Response via : Initial Calibration  
 Integrator: ChemStation 6890 Scale Mode: Small noise peaks clipped

Volume Inj. : 2 µl  
 Signal #1 Phase : ZB-MR1 Signal #2 Phase: ZB-MR2  
 Signal #1 Info : 30Mx0.32mmx 0.50µ Signal #2 Info : 30M x 0.32mm x 0.25µm

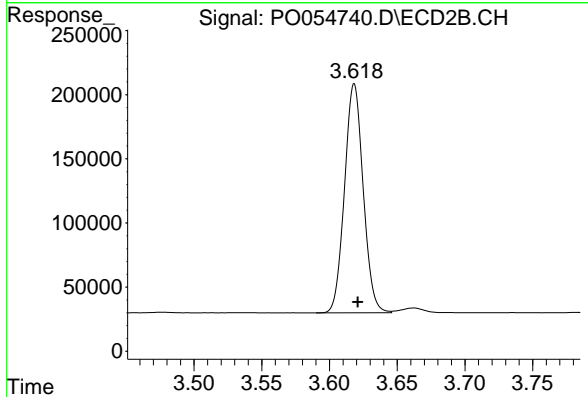




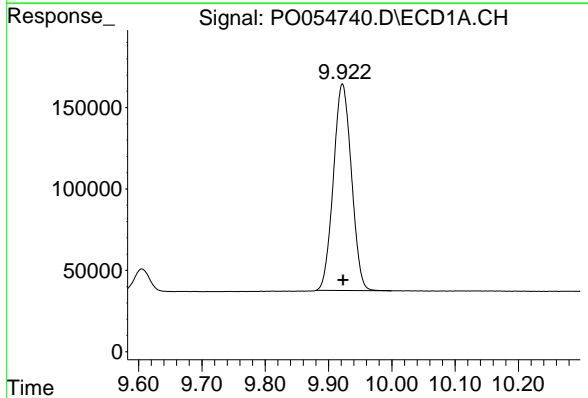
#1 Tetrachloro-m-xylene  
 R.T.: 4.302 min  
 Delta R.T.: 0.000 min  
 Response: 1826182  
 Conc: 52.62 ng/ml

Instrument :  
 ECD\_O  
 ClientSampled :  
 AR1660CCC500

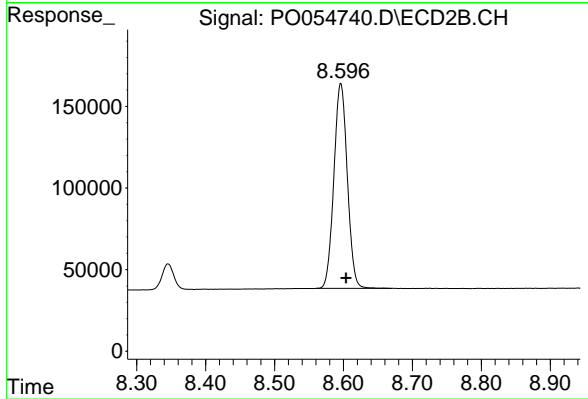
Manual Integrations  
 APPROVED  
 Sohil  
 4/1/2019 5:15:21 PM



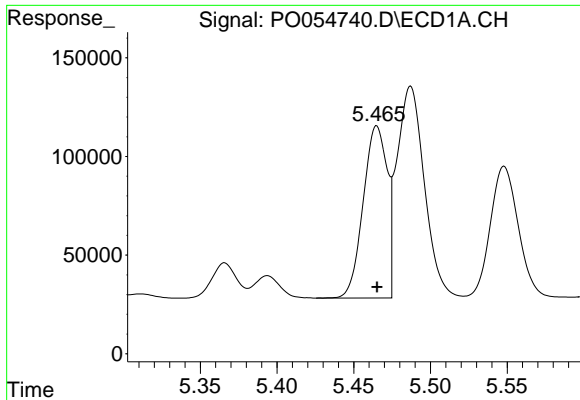
#1 Tetrachloro-m-xylene  
 R.T.: 3.618 min  
 Delta R.T.: -0.003 min  
 Response: 1715105  
 Conc: 53.74 ng/ml



#2 Decachlorobiphenyl  
 R.T.: 9.922 min  
 Delta R.T.: -0.001 min  
 Response: 2512246  
 Conc: 50.96 ng/ml



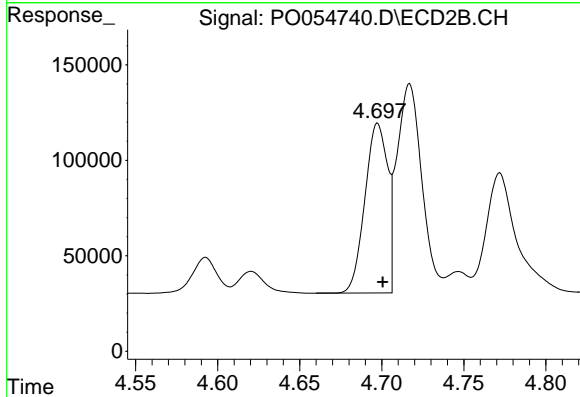
#2 Decachlorobiphenyl  
 R.T.: 8.596 min  
 Delta R.T.: -0.008 min  
 Response: 1700694  
 Conc: 53.40 ng/ml



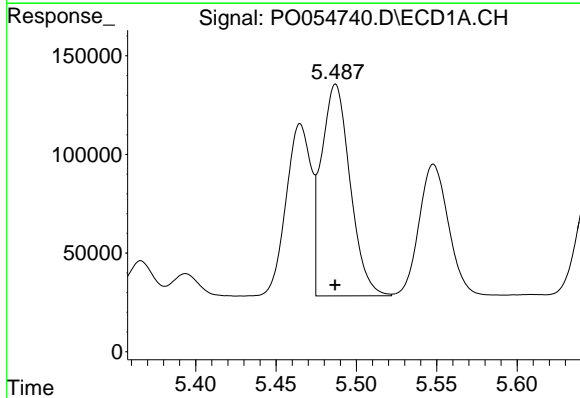
#3 AR-1016-1  
 R.T.: 5.465 min  
 Delta R.T.: 0.000 min  
 Response: 945746  
 Conc: 525.58 ng/ml

**Instrument :**  
 ECD\_O  
**ClientSampled :**  
 AR1660CCC500

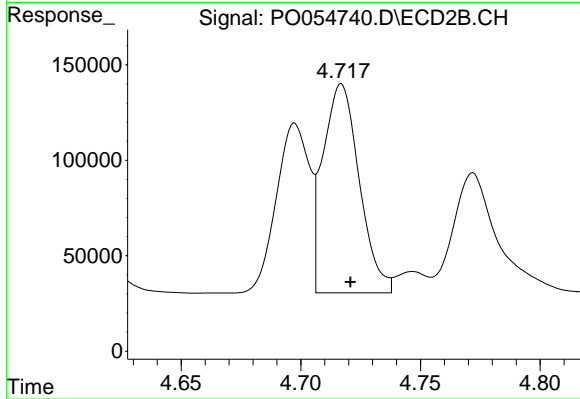
**Manual Integrations**  
**APPROVED**  
 Sohil  
 4/1/2019 5:15:21 PM



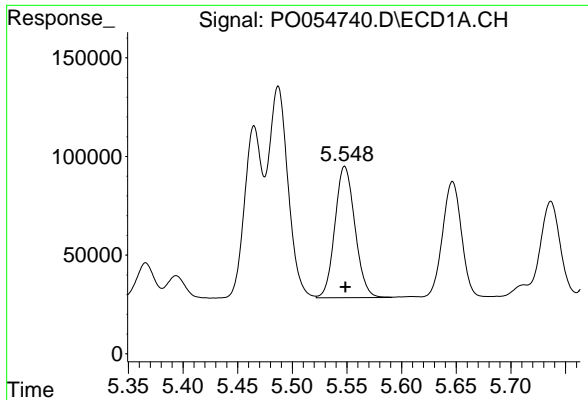
#3 AR-1016-1  
 R.T.: 4.697 min  
 Delta R.T.: -0.003 min  
 Response: 853231  
 Conc: 539.54 ng/ml



#4 AR-1016-2  
 R.T.: 5.487 min  
 Delta R.T.: 0.000 min  
 Response: 1334442  
 Conc: 537.29 ng/ml



#4 AR-1016-2  
 R.T.: 4.717 min  
 Delta R.T.: -0.004 min  
 Response: 1155647  
 Conc: 539.33 ng/ml

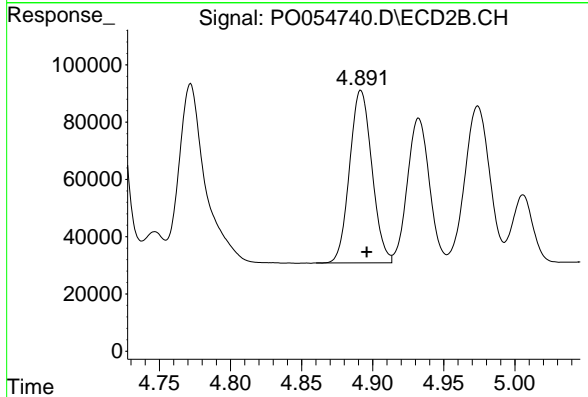


#5 AR-1016-3

R.T.: 5.548 min  
 Delta R.T.: 0.000 min  
 Response: 850247  
 Conc: 540.44 ng/ml

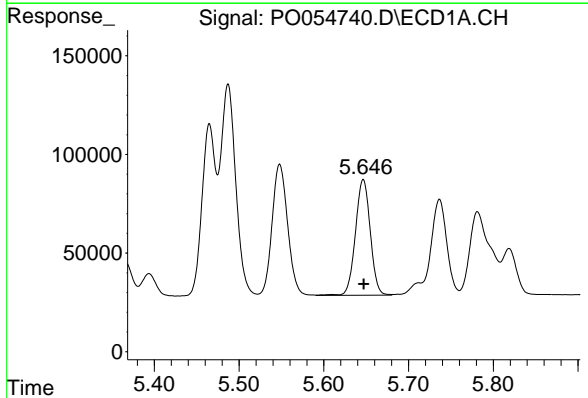
Instrument :  
 ECD\_O  
 ClientSampled :  
 AR1660CCC500

Manual Integrations  
 APPROVED  
 Sohil  
 4/1/2019 5:15:21 PM



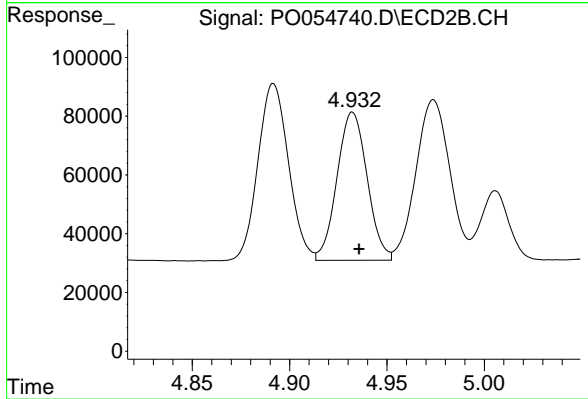
#5 AR-1016-3

R.T.: 4.892 min  
 Delta R.T.: -0.004 min  
 Response: 658414  
 Conc: 544.94 ng/ml



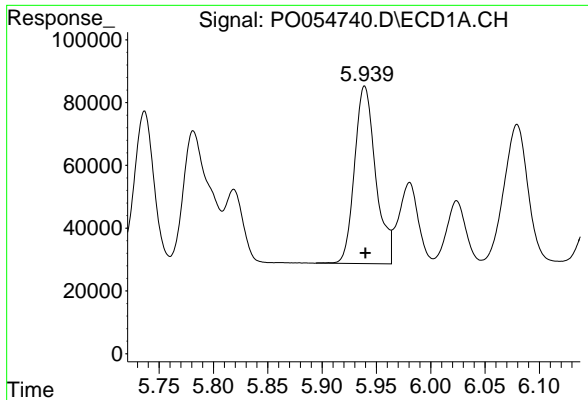
#6 AR-1016-4

R.T.: 5.647 min  
 Delta R.T.: 0.000 min  
 Response: 715118  
 Conc: 548.79 ng/ml



#6 AR-1016-4

R.T.: 4.932 min  
 Delta R.T.: -0.003 min  
 Response: 543493  
 Conc: 537.83 ng/ml

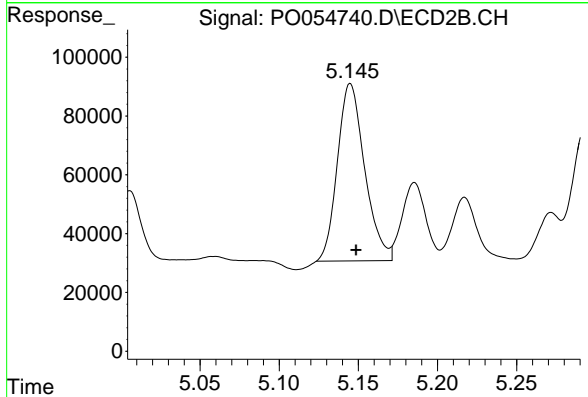


#7 AR-1016-5

R.T.: 5.939 min  
 Delta R.T.: 0.000 min  
 Response: 764262  
 Conc: 572.80 ng/ml

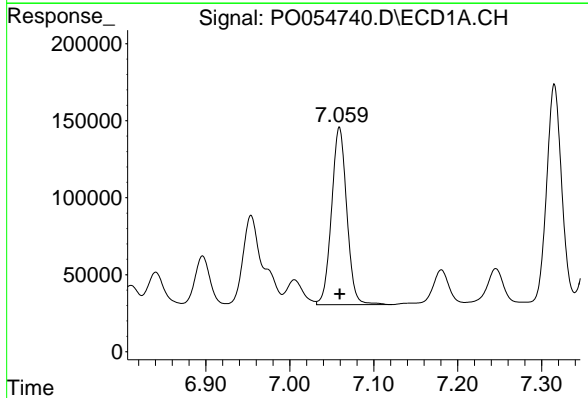
**Instrument :**  
 ECD\_O  
**ClientSampled :**  
 AR1660CCC500

**Manual Integrations**  
**APPROVED**  
 Sohil  
 4/1/2019 5:15:21 PM



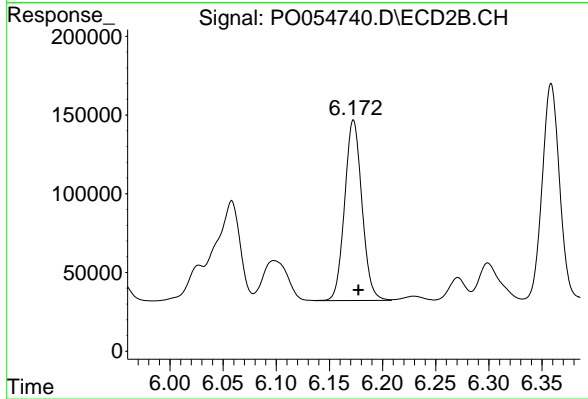
#7 AR-1016-5

R.T.: 5.145 min  
 Delta R.T.: -0.004 min  
 Response: 723377  
 Conc: 554.99 ng/ml m



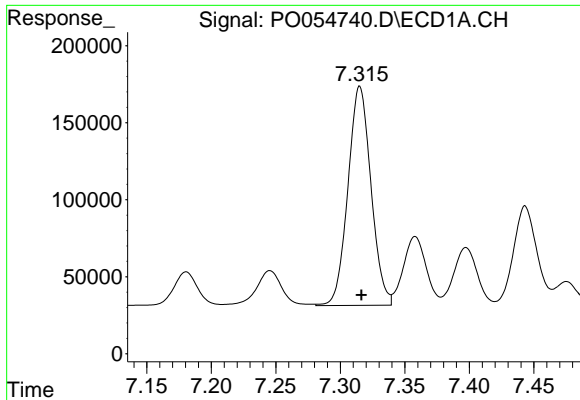
#31 AR-1260-1

R.T.: 7.059 min  
 Delta R.T.: 0.000 min  
 Response: 1454342  
 Conc: 578.81 ng/ml



#31 AR-1260-1

R.T.: 6.173 min  
 Delta R.T.: -0.005 min  
 Response: 1301038  
 Conc: 566.14 ng/ml

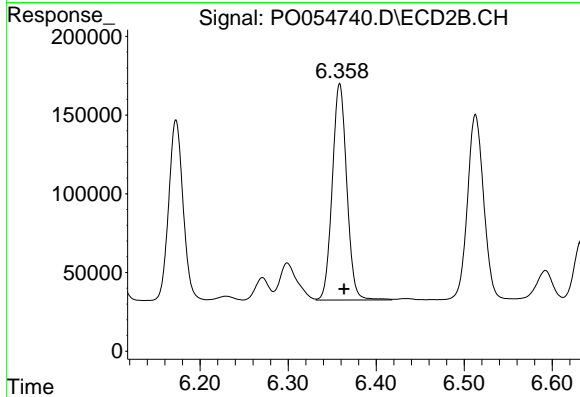


#32 AR-1260-2

R.T.: 7.315 min  
 Delta R.T.: -0.001 min  
 Response: 1766757  
 Conc: 569.27 ng/ml

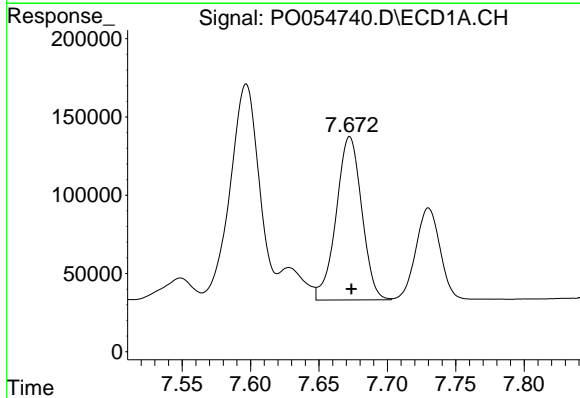
**Instrument :**  
 ECD\_O  
**ClientSampleId :**  
 AR1660CCC500

**Manual Integrations**  
**APPROVED**  
 Sohil  
 4/1/2019 5:15:21 PM



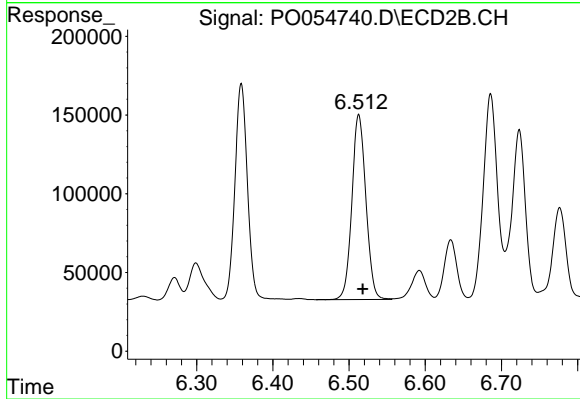
#32 AR-1260-2

R.T.: 6.359 min  
 Delta R.T.: -0.005 min  
 Response: 1573182  
 Conc: 571.49 ng/ml



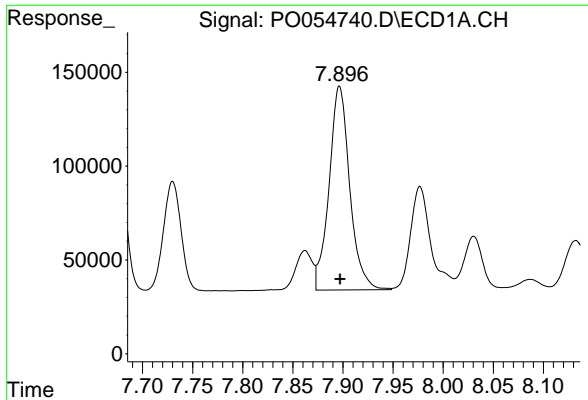
#33 AR-1260-3

R.T.: 7.673 min  
 Delta R.T.: -0.001 min  
 Response: 1357439  
 Conc: 553.07 ng/ml



#33 AR-1260-3

R.T.: 6.513 min  
 Delta R.T.: -0.005 min  
 Response: 1500646  
 Conc: 582.12 ng/ml

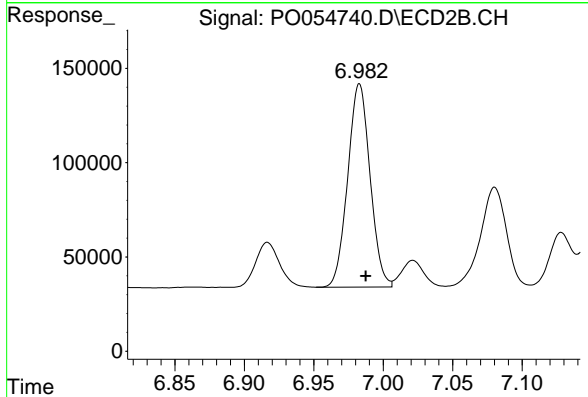


#34 AR-1260-4

R.T.: 7.897 min  
 Delta R.T.: 0.000 min  
 Response: 1558577  
 Conc: 563.47 ng/ml

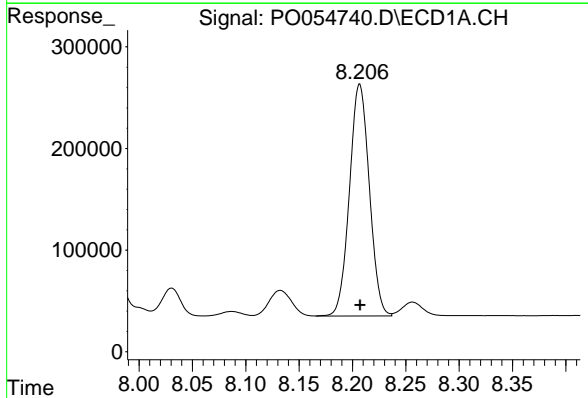
**Instrument :**  
 ECD\_O  
**ClientSampled :**  
 AR1660CCC500

**Manual Integrations**  
**APPROVED**  
 Sohil  
 4/1/2019 5:15:21 PM



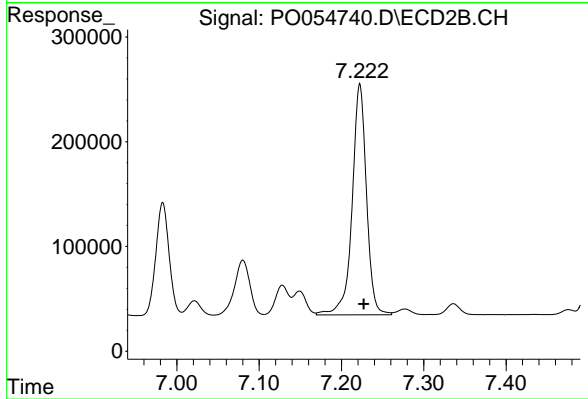
#34 AR-1260-4

R.T.: 6.983 min  
 Delta R.T.: -0.005 min  
 Response: 1206158  
 Conc: 566.76 ng/ml



#35 AR-1260-5

R.T.: 8.207 min  
 Delta R.T.: 0.000 min  
 Response: 2959001  
 Conc: 533.29 ng/ml



#35 AR-1260-5

R.T.: 7.222 min  
 Delta R.T.: -0.005 min  
 Response: 2672884  
 Conc: 558.10 ng/ml