

Data Path : P:\HPCHEM1\ECD\_O\Data\PO033018\  
 Data File : PO043430.D  
 Signal(s) : Signal #1: ECD1A.CH Signal #2: ECD2B.CH  
 Acq On : 30 Mar 2018 19:07  
 Operator : SM/UA  
 Sample : J2139-02DL 250X  
 Misc :  
 ALS Vial : 13 Sample Multiplier: 1

Instrument :  
 ECD\_O  
 ClientSampled :  
 N4DL

Integration File signal 1: autoint1.e  
 Integration File signal 2: autoint2.e  
 Quant Time: Mar 30 19:24:10 2018  
 Quant Method : P:\HPCHEM1\ECD\_O\methods\PO032318.M  
 Quant Title : GC EXTRACTABLES  
 QLast Update : Fri Mar 23 05:22:35 2018  
 Response via : Initial Calibration  
 Integrator: ChemStation 6890 Scale Mode: Small noise peaks clipped

Volume Inj. : 2 µl  
 Signal #1 Phase : ZB-MR1 Signal #2 Phase: ZB-MR2  
 Signal #1 Info : 30Mx0.32mmx 0.50µ Signal #2 Info : 30M x 0.32mm x 0.25µm

| Compound                    | RT#1  | RT#2  | Resp#1   | Resp#2   | ng/ml    | ng/ml      |
|-----------------------------|-------|-------|----------|----------|----------|------------|
| -----                       |       |       |          |          |          |            |
| System Monitoring Compounds |       |       |          |          |          |            |
| 1) SA Tetrachlo...          | 4.115 | 3.382 | 204320   | 918716   | 0.964    | 3.139 #    |
| Target Compounds            |       |       |          |          |          |            |
| 3) L1 AR-1016-1             | 4.941 | 4.151 | 1527817  | 462675   | 268.503  | 57.390 #   |
| 4) L1 AR-1016-2             | 5.283 | 4.581 | 866031   | 2570531  | 99.800   | 355.006 #  |
| 5) L1 AR-1016-3             | 5.374 | 4.638 | 36593    | 914881   | 5.263    | 102.087 #  |
| 6) L1 AR-1016-4             | 5.794 | 4.775 | 553168   | 340642   | 77.570   | 35.123 #   |
| 7) L1 AR-1016-5             | 6.023 | 5.117 | 5286499  | 8297606  | 803.514  | 817.923 #  |
| 8) L2 AR-1221-1             | 4.250 | 0.000 | 264217   | 0        | 80.148   | N.D. #     |
| 9) L2 AR-1221-2             | 4.366 | 0.000 | 209051   | 0        | 86.571   | N.D. #     |
| 10) L2 AR-1221-3            | 4.438 | 3.712 | 136306   | 12758818 | 17.737   | 1261.724 # |
| 11) L3 AR-1232-1            | 4.438 | 3.712 | 136306   | 12758818 | 32.583   | 2359.973 # |
| 12) L3 AR-1232-2            | 5.196 | 0.000 | 795189   | 0        | 245.802  | N.D. #     |
| 13) L3 AR-1232-3            | 5.221 | 4.487 | 874691   | 788934   | 170.371  | 168.083 #  |
| 14) L3 AR-1232-4            | 5.283 | 4.581 | 866031   | 2570531  | 263.455  | 733.577 #  |
| 15) L3 AR-1232-5            | 5.374 | 4.581 | 36593    | 2570531  | 14.934   | 1050.073 # |
| 16) L4 AR-1242-1            | 4.764 | 4.151 | 3404377  | 462675   | 966.897  | 92.069 #   |
| 17) L4 AR-1242-2            | 5.221 | 0.000 | 874691   | 0        | 105.380  | N.D. #     |
| 18) L4 AR-1242-3            | 5.374 | 4.581 | 36593    | 2570531  | 8.457    | 448.014 #  |
| 19) L4 AR-1242-4            | 5.655 | 4.638 | 371755   | 914881   | 89.128   | 160.127 #  |
| 20) L4 AR-1242-5            | 5.794 | 4.775 | 553168   | 340642   | 117.070  | 54.849 #   |
| 21) L5 AR-1248-1            | 5.655 | 4.775 | 371755   | 340642   | 49.341   | 30.079 #   |
| 22) L5 AR-1248-2            | 5.794 | 4.931 | 553168   | 542288   | 83.023   | 49.474 #   |
| 23) L5 AR-1248-3            | 6.023 | 5.117 | 5286499  | 8297606  | 575.391  | 475.539 #  |
| 24) L5 AR-1248-4            | 6.091 | 5.117 | 389381   | 8297606  | 42.156   | 582.750 #  |
| 25) L5 AR-1248-5            | 6.290 | 5.660 | 556598   | 18418366 | 88.417   | 2256.731 # |
| 26) L6 AR-1254-1            | 6.235 | 5.117 | 7812103  | 8297606  | 490.648  | 386.319 #  |
| 27) L6 AR-1254-2            | 6.509 | 5.262 | 2188815  | 9400244  | 212.216  | 487.884 #  |
| 28) L6 AR-1254-3            | 6.592 | 5.660 | 4808369  | 18418366 | 266.681  | 574.901 #  |
| 29) L6 AR-1254-4            | 6.870 | 5.871 | 4594811  | 2444072  | 308.682  | 92.198 #   |
| 30) L6 AR-1254-5            | 7.129 | 6.175 | 12952944 | 3774487  | 1188.990 | 254.533 #  |
| 31) L7 AR-1260-1            | 6.753 | 5.772 | 19663534 | 26396533 | 1399.105 | 1177.992 # |
| 32) L7 AR-1260-2            | 7.004 | 5.959 | 25891334 | 39922389 | 1425.858 | 1235.235 # |
| 33) L7 AR-1260-3            | 7.279 | 6.103 | 28256575 | 29089075 | 1390.302 | 1108.482 # |
| 34) L7 AR-1260-4            | 7.412 | 6.274 | 11088618 | 38737511 | 1512.542 | 1262.499 # |
| 35) L7 AR-1260-5            | 7.877 | 6.803 | 40650272 | 65903211 | 1334.646 | 1132.170 # |
| 36) L8 AR-1262-1            | 6.753 | 5.959 | 19663534 | 39922389 | 1849.967 | 1739.021 # |
| 37) L8 AR-1262-2            | 7.004 | 6.103 | 25891334 | 29089075 | 1922.245 | 1391.245 # |
| 38) L8 AR-1262-3            | 7.279 | 6.309 | 28256575 | 28725391 | 2265.184 | 772.447 #  |
| 39) L8 AR-1262-4            | 7.577 | 6.560 | 17515915 | 21418642 | 1047.560 | 740.584 #  |

Data Path : P:\HPCHEM1\ECD\_O\Data\PO033018\  
 Data File : PO043430.D  
 Signal(s) : Signal #1: ECD1A.CH Signal #2: ECD2B.CH  
 Acq On : 30 Mar 2018 19:07  
 Operator : SM/UA  
 Sample : J2139-02DL 250X  
 Misc :  
 ALS Vial : 13 Sample Multiplier: 1

Instrument :  
 ECD\_O  
 ClientSampleId :  
 N4DL

Integration File signal 1: autoint1.e  
 Integration File signal 2: autoint2.e  
 Quant Time: Mar 30 19:24:10 2018  
 Quant Method : P:\HPCHEM1\ECD\_O\methods\PO032318.M  
 Quant Title : GC EXTRACTABLES  
 QLast Update : Fri Mar 23 05:22:35 2018  
 Response via : Initial Calibration  
 Integrator: ChemStation 6890 Scale Mode: Small noise peaks clipped

Volume Inj. : 2 µl  
 Signal #1 Phase : ZB-MR1 Signal #2 Phase: ZB-MR2  
 Signal #1 Info : 30Mx0.32mmx 0.50µ Signal #2 Info : 30M x 0.32mm x 0.25µm

|     | Compound     | RT#1  | RT#2  | Resp#1   | Resp#2   | ng/ml    | ng/ml     |
|-----|--------------|-------|-------|----------|----------|----------|-----------|
| 40) | L8 AR-1262-5 | 7.877 | 6.803 | 40650272 | 65903211 | 1194.639 | 1033.941  |
| 41) | L9 AR-1268-1 | 8.162 | 7.073 | 22114245 | 11400324 | 426.722  | 118.435 # |
| 42) | L9 AR-1268-2 | 8.213 | 7.137 | 13366921 | 39733070 | 288.120  | 456.510 # |
| 43) | L9 AR-1268-3 | 8.429 | 7.333 | -167511  | 740100   | N.D.     | 10.057 #  |
| 44) | L9 AR-1268-4 | 8.796 | 7.627 | 8931743  | 12415887 | 527.655  | 420.880   |
| 45) | L9 AR-1268-5 | 9.145 | 7.888 | 1681145  | 2150987  | 15.110   | 11.095 #  |

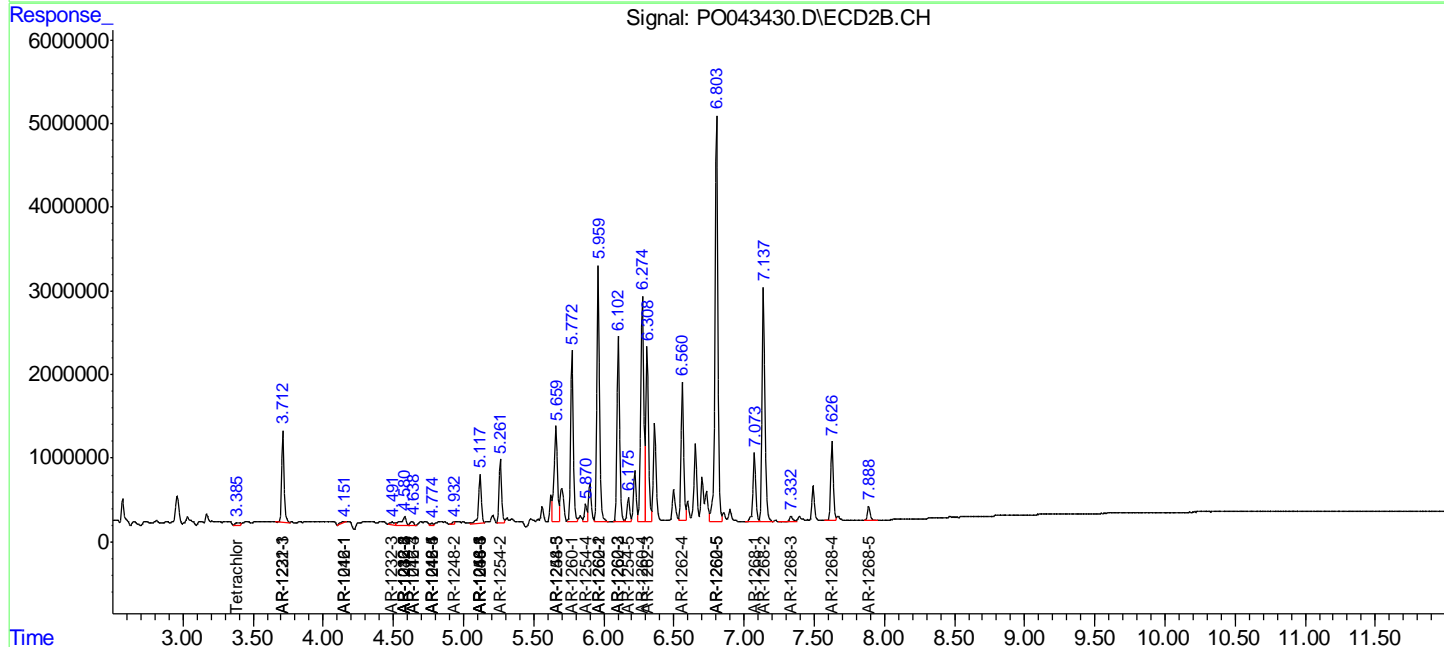
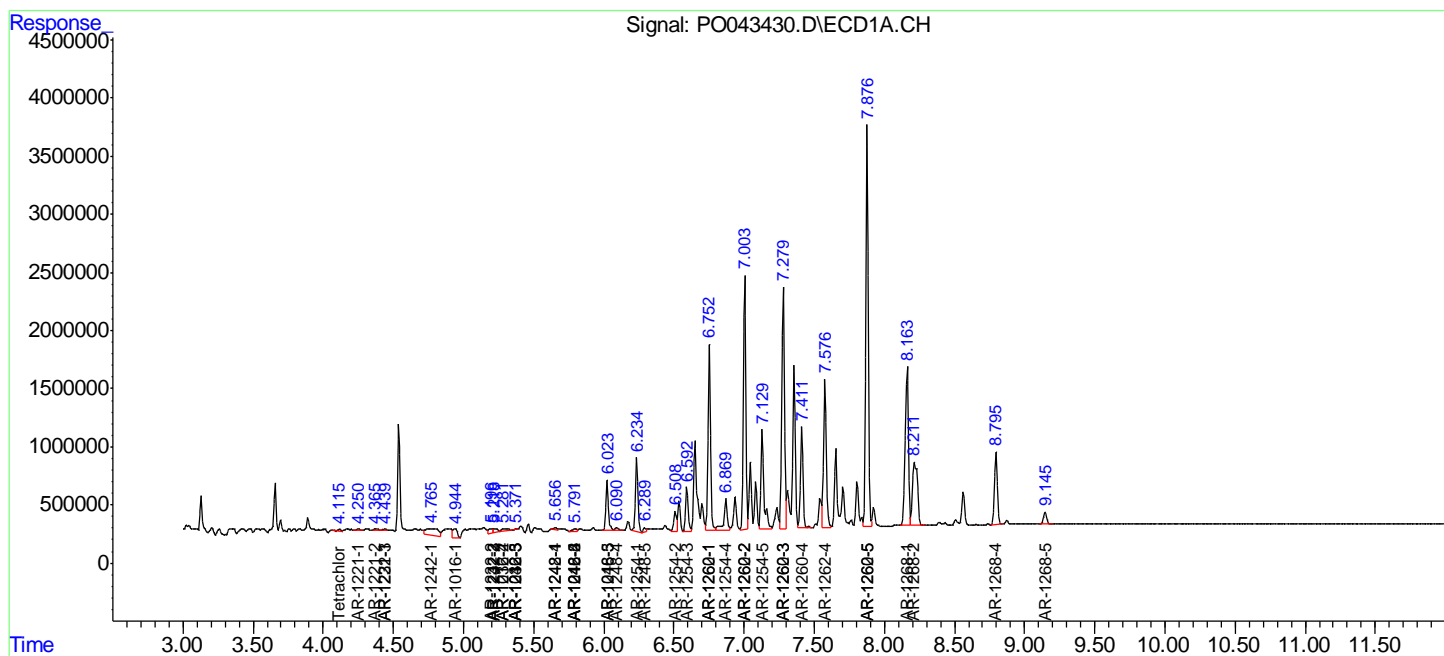
(f)=RT Delta > 1/2 Window (#)=Amounts differ by > 25% (m)=manual int.

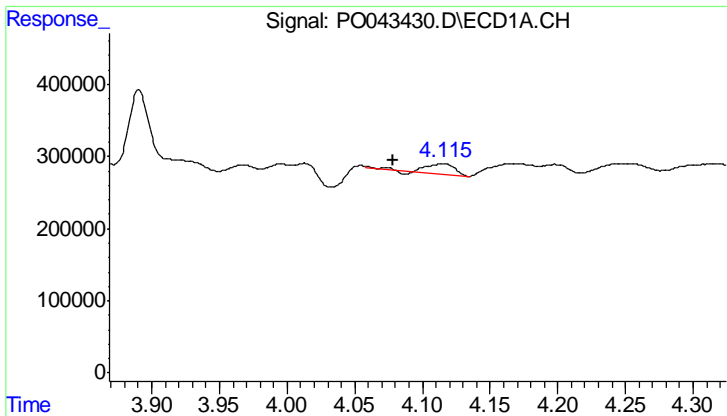
Data Path : P:\HPCHEM1\ECD\_O\Data\PO033018\  
 Data File : PO043430.D  
 Signal(s) : Signal #1: ECD1A.CH Signal #2: ECD2B.CH  
 Acq On : 30 Mar 2018 19:07  
 Operator : SM/UA  
 Sample : J2139-02DL 250X  
 Misc :  
 ALS Vial : 13 Sample Multiplier: 1

Instrument :  
 ECD\_O  
 ClientSampled :  
 N4DL

Integration File signal 1: autoint1.e  
 Integration File signal 2: autoint2.e  
 Quant Time: Mar 30 19:24:10 2018  
 Quant Method : P:\HPCHEM1\ECD\_O\methods\PO032318.M  
 Quant Title : GC EXTRACTABLES  
 QLast Update : Fri Mar 23 05:22:35 2018  
 Response via : Initial Calibration  
 Integrator: ChemStation 6890 Scale Mode: Small noise peaks clipped

Volume Inj. : 2 µl  
 Signal #1 Phase : ZB-MR1 Signal #2 Phase: ZB-MR2  
 Signal #1 Info : 30Mx0.32mmx 0.50µ Signal #2 Info : 30M x 0.32mm x 0.25µm

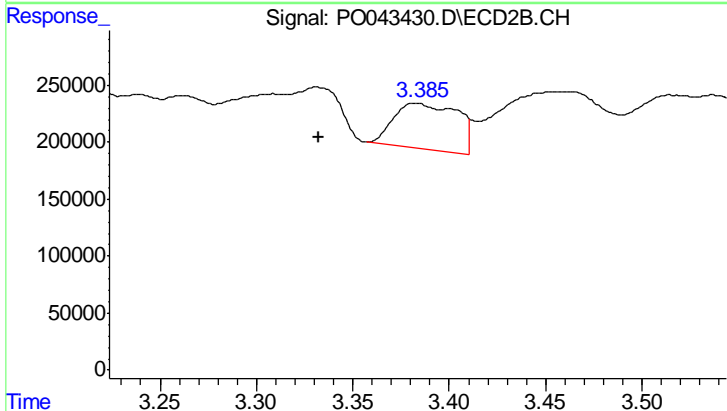




#1 Tetrachloro-m-xylene

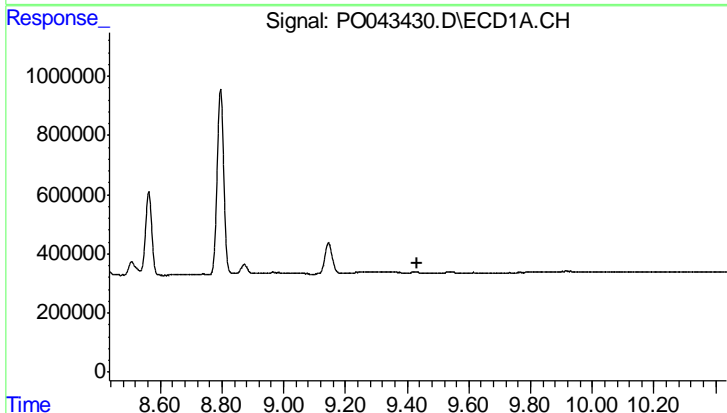
R.T.: 4.115 min  
 Delta R.T.: 0.037 min  
 Response: 204320  
 Conc: 0.96 ng/ml

Instrument :  
 ECD\_O  
 ClientSampleId :  
 N4DL



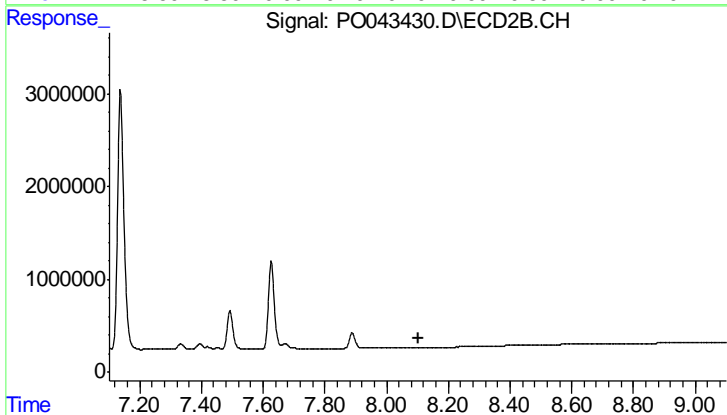
#1 Tetrachloro-m-xylene

R.T.: 3.382 min  
 Delta R.T.: 0.050 min  
 Response: 918716  
 Conc: 3.14 ng/ml



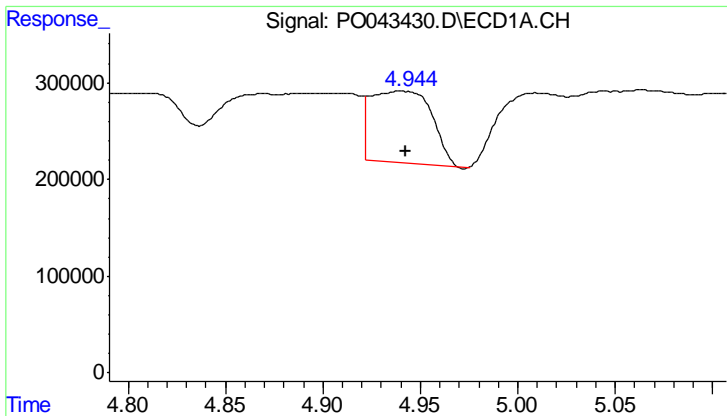
#2 Decachlorobiphenyl

R.T.: 0.000 min  
 Exp R.T. : 9.435 min  
 Response: 0  
 Conc: N.D.



#2 Decachlorobiphenyl

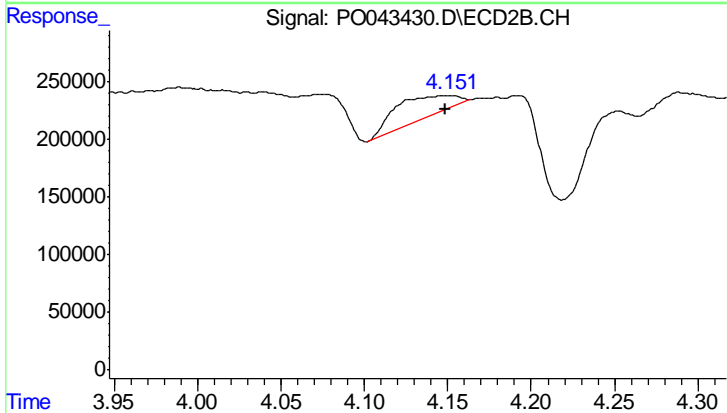
R.T.: 0.000 min  
 Exp R.T. : 8.102 min  
 Response: 0  
 Conc: N.D.



#3 AR-1016-1

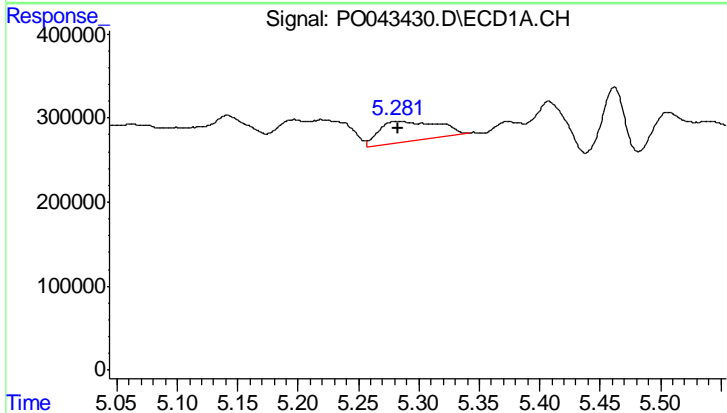
R.T.: 4.941 min  
 Delta R.T.: -0.002 min  
 Response: 1527817  
 Conc: 268.50 ng/ml

Instrument :  
 ECD\_O  
 ClientSampled :  
 N4DL



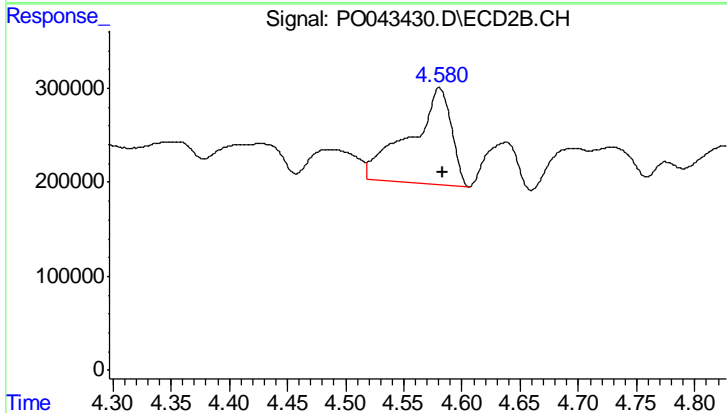
#3 AR-1016-1

R.T.: 4.151 min  
 Delta R.T.: 0.002 min  
 Response: 462675  
 Conc: 57.39 ng/ml



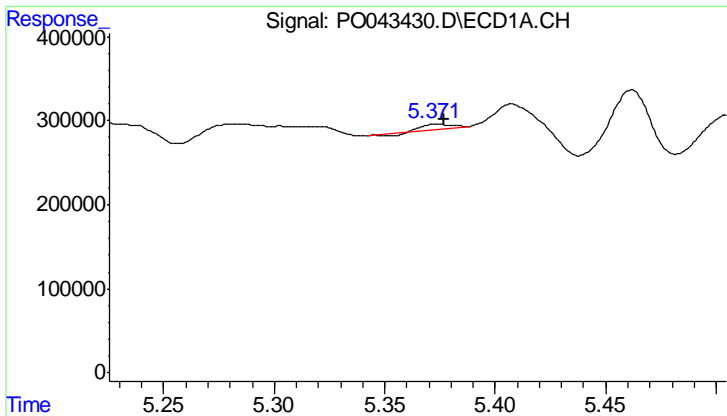
#4 AR-1016-2

R.T.: 5.283 min  
 Delta R.T.: 0.000 min  
 Response: 866031  
 Conc: 99.80 ng/ml



#4 AR-1016-2

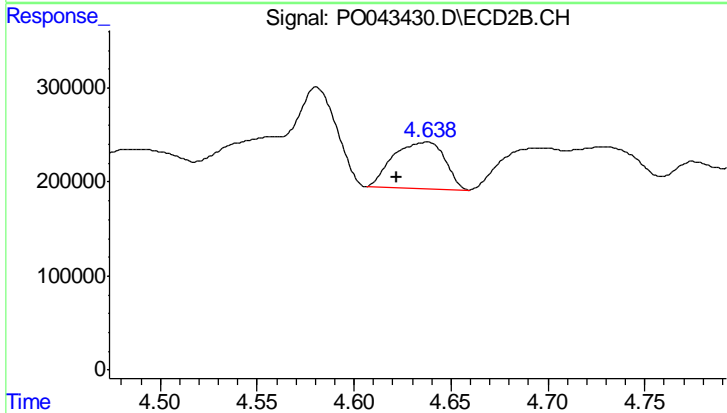
R.T.: 4.581 min  
 Delta R.T.: -0.003 min  
 Response: 2570531  
 Conc: 355.01 ng/ml



#5 AR-1016-3

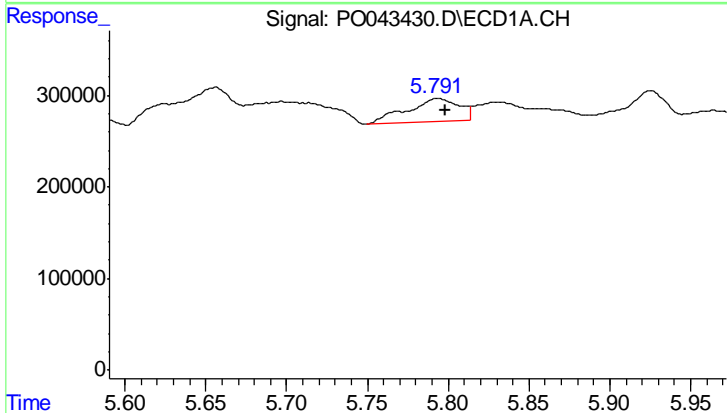
R.T.: 5.374 min  
 Delta R.T.: -0.003 min  
 Response: 36593  
 Conc: 5.26 ng/ml

Instrument :  
 ECD\_O  
 ClientSampleId :  
 N4DL



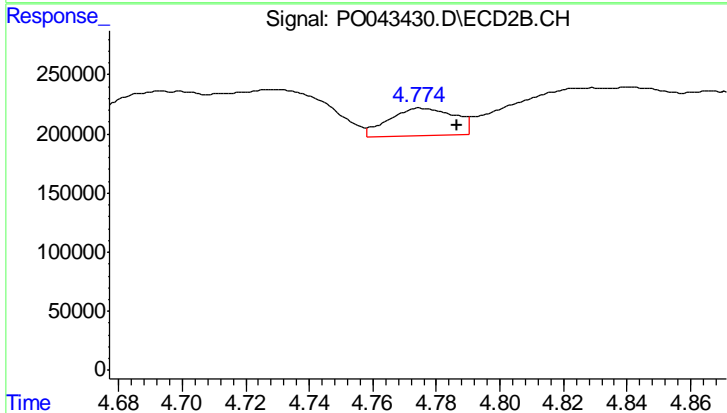
#5 AR-1016-3

R.T.: 4.638 min  
 Delta R.T.: 0.016 min  
 Response: 914881  
 Conc: 102.09 ng/ml



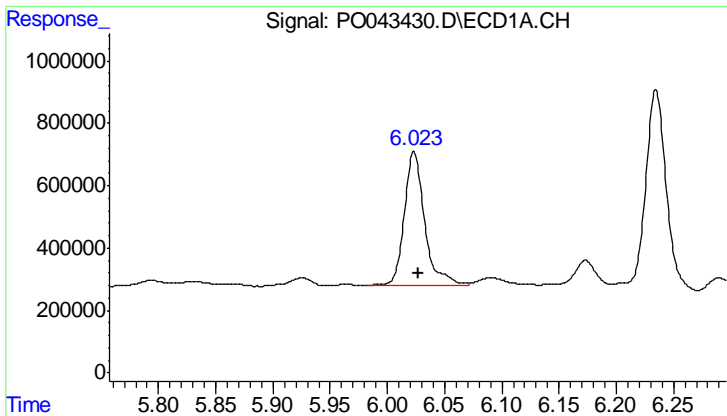
#6 AR-1016-4

R.T.: 5.794 min  
 Delta R.T.: -0.004 min  
 Response: 553168  
 Conc: 77.57 ng/ml



#6 AR-1016-4

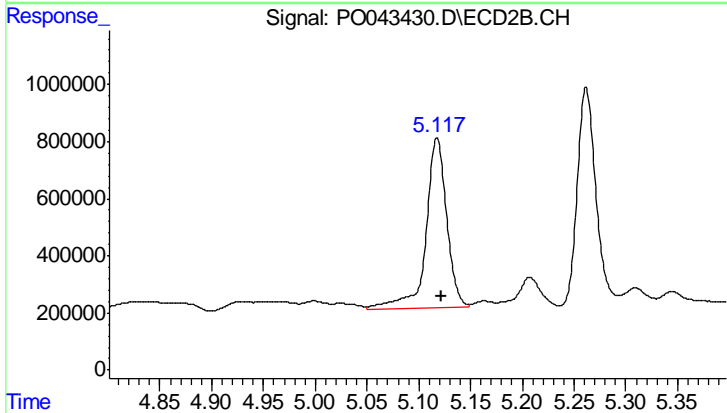
R.T.: 4.775 min  
 Delta R.T.: -0.012 min  
 Response: 340642  
 Conc: 35.12 ng/ml



#7 AR-1016-5

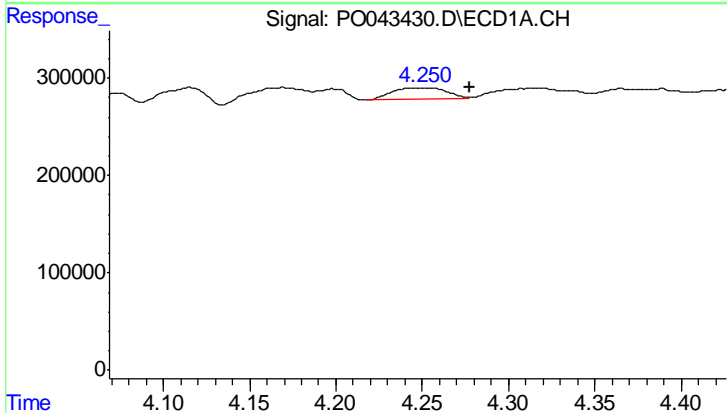
R.T.: 6.023 min  
 Delta R.T.: -0.004 min  
 Response: 5286499  
 Conc: 803.51 ng/ml

Instrument :  
 ECD\_O  
 ClientSampleId :  
 N4DL



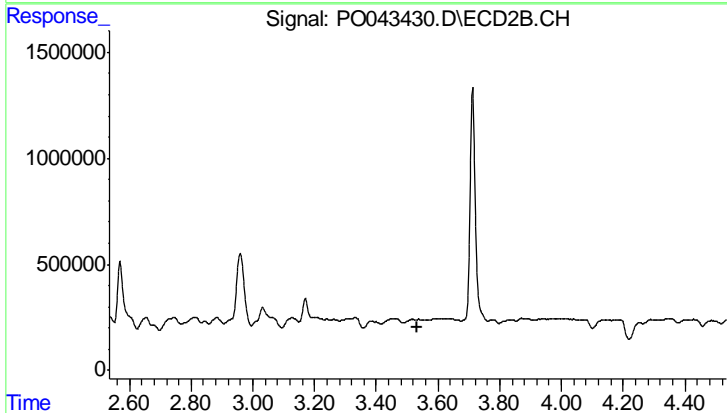
#7 AR-1016-5

R.T.: 5.117 min  
 Delta R.T.: -0.004 min  
 Response: 8297606  
 Conc: 817.92 ng/ml



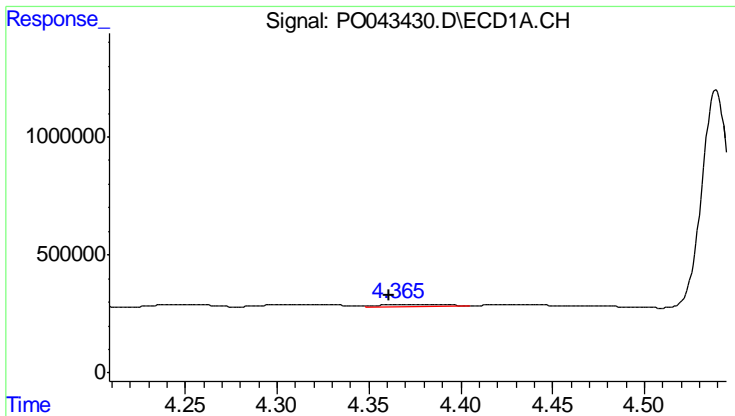
#8 AR-1221-1

R.T.: 4.250 min  
 Delta R.T.: -0.027 min  
 Response: 264217  
 Conc: 80.15 ng/ml



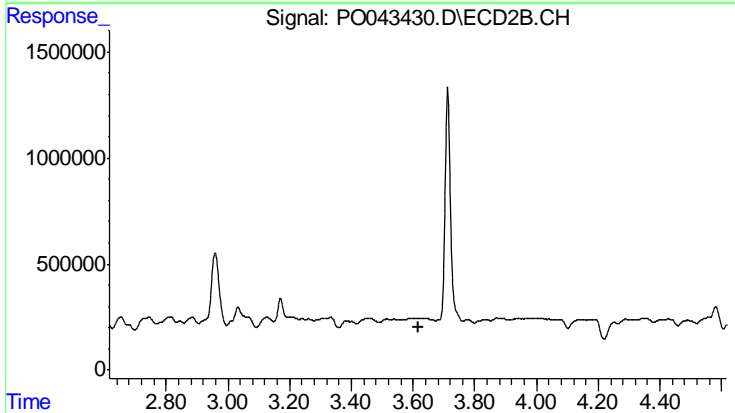
#8 AR-1221-1

R.T.: 0.000 min  
 Exp R.T. : 3.535 min  
 Response: 0  
 Conc: N.D.

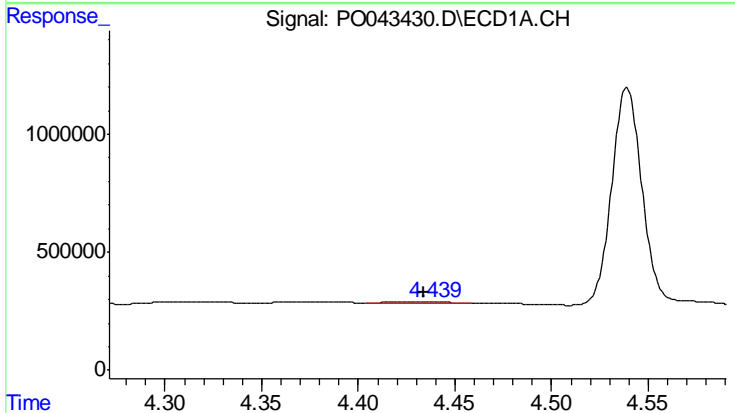


#9 AR-1221-2  
 R.T.: 4.366 min  
 Delta R.T.: 0.005 min  
 Response: 209051  
 Conc: 86.57 ng/ml

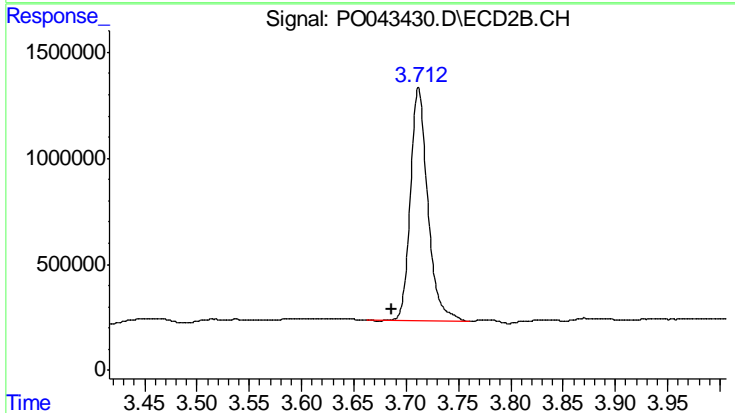
Instrument :  
 ECD\_O  
 ClientSampled :  
 N4DL



#9 AR-1221-2  
 R.T.: 0.000 min  
 Exp R.T.: 3.616 min  
 Response: 0  
 Conc: N.D.

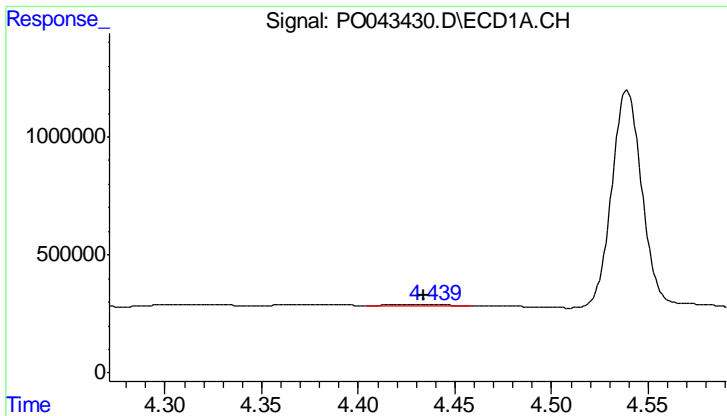


#10 AR-1221-3  
 R.T.: 4.438 min  
 Delta R.T.: 0.004 min  
 Response: 136306  
 Conc: 17.74 ng/ml



#10 AR-1221-3  
 R.T.: 3.712 min  
 Delta R.T.: 0.025 min  
 Response: 12758818  
 Conc: 1261.72 ng/ml

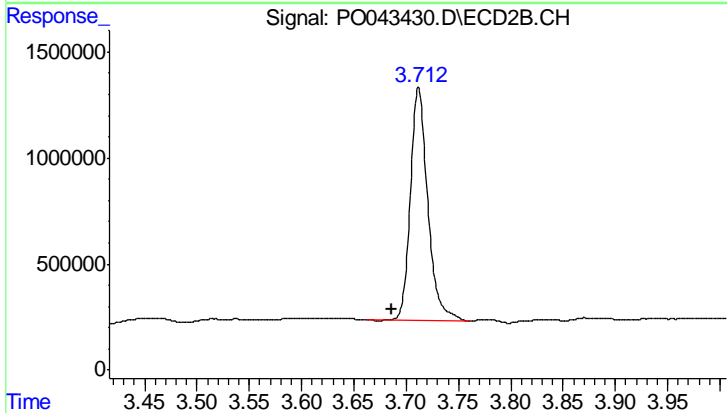




#11 AR-1232-1

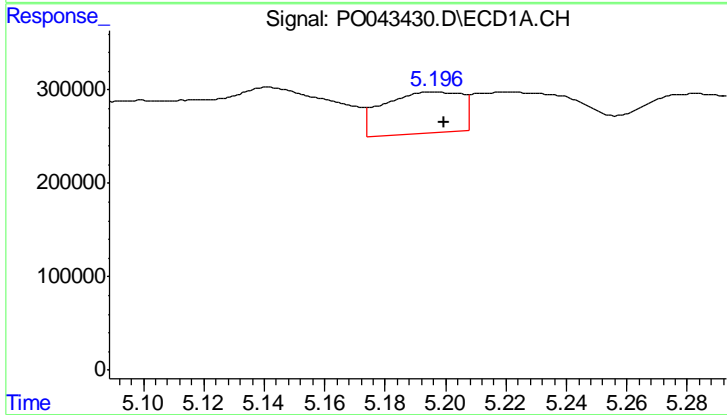
R.T.: 4.438 min  
 Delta R.T.: 0.004 min  
 Response: 136306  
 Conc: 32.58 ng/ml

Instrument :  
 ECD\_O  
 ClientSampleId :  
 N4DL



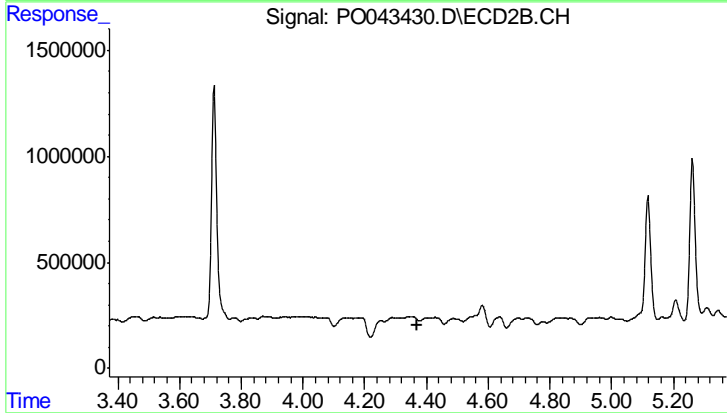
#11 AR-1232-1

R.T.: 3.712 min  
 Delta R.T.: 0.026 min  
 Response: 12758818  
 Conc: 2359.97 ng/ml



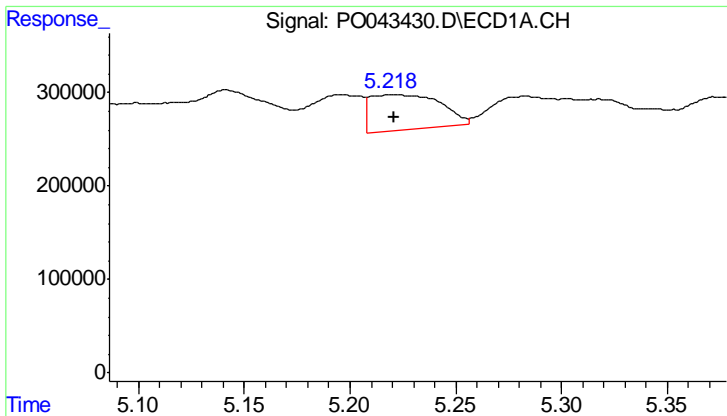
#12 AR-1232-2

R.T.: 5.196 min  
 Delta R.T.: -0.003 min  
 Response: 795189  
 Conc: 245.80 ng/ml



#12 AR-1232-2

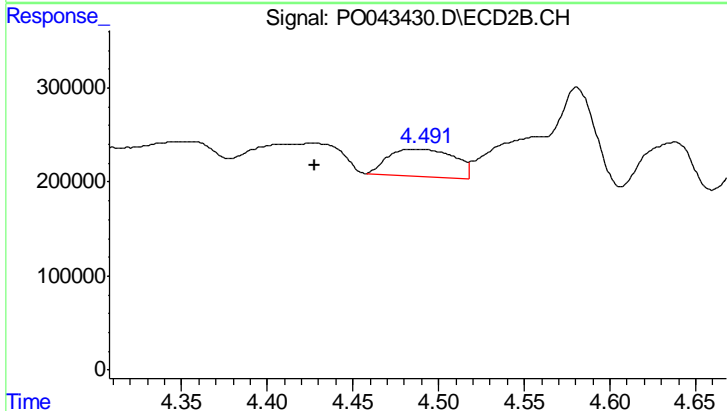
R.T.: 0.000 min  
 Exp R.T. : 4.372 min  
 Response: 0  
 Conc: N.D.



#13 AR-1232-3

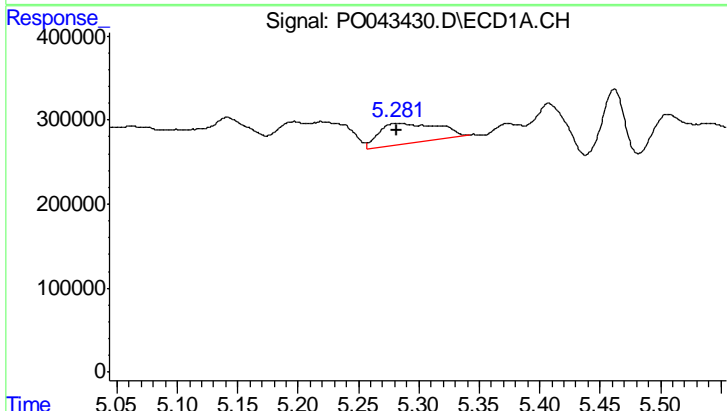
R.T.: 5.221 min  
 Delta R.T.: 0.000 min  
 Response: 874691  
 Conc: 170.37 ng/ml

Instrument :  
 ECD\_O  
 ClientSampled :  
 N4DL



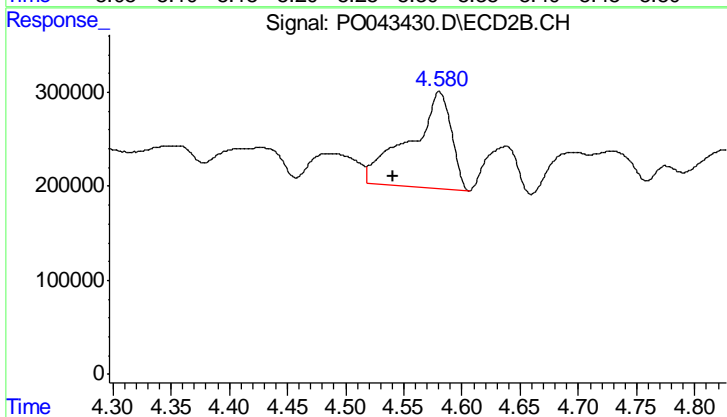
#13 AR-1232-3

R.T.: 4.487 min  
 Delta R.T.: 0.059 min  
 Response: 788934  
 Conc: 168.08 ng/ml



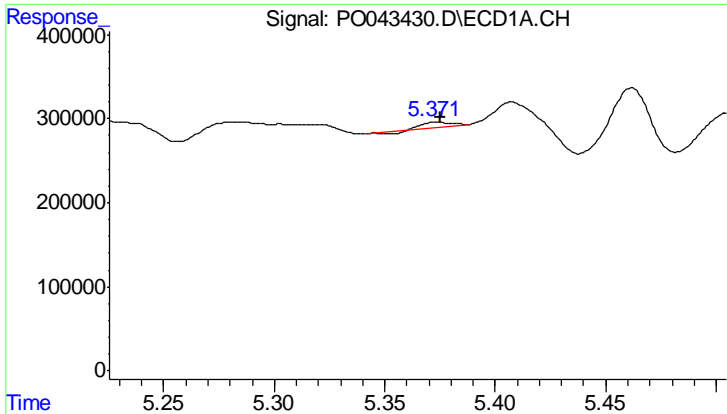
#14 AR-1232-4

R.T.: 5.283 min  
 Delta R.T.: 0.002 min  
 Response: 866031  
 Conc: 263.45 ng/ml



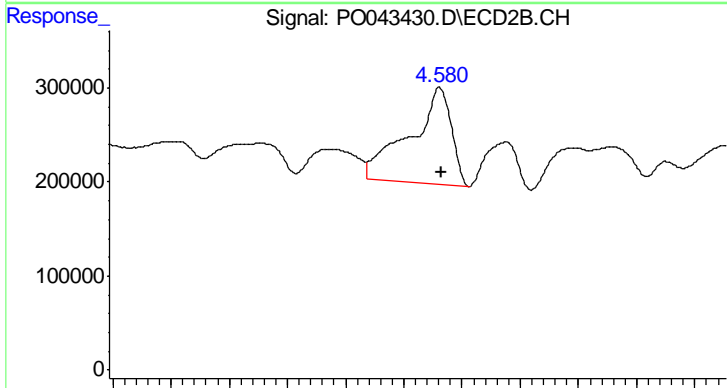
#14 AR-1232-4

R.T.: 4.581 min  
 Delta R.T.: 0.039 min  
 Response: 2570531  
 Conc: 733.58 ng/ml

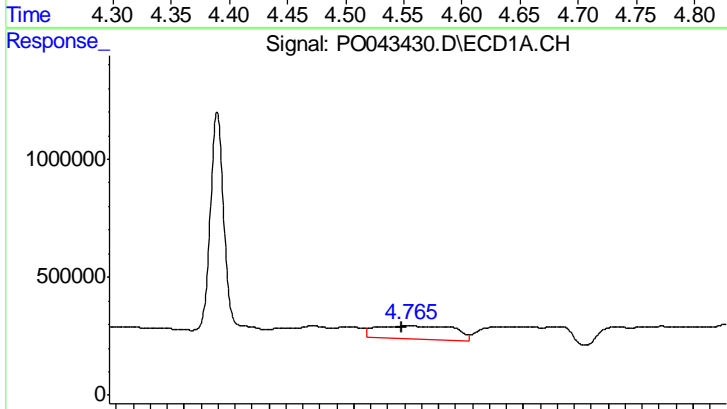


#15 AR-1232-5  
 R.T.: 5.374 min  
 Delta R.T.: -0.001 min  
 Response: 36593  
 Conc: 14.93 ng/ml

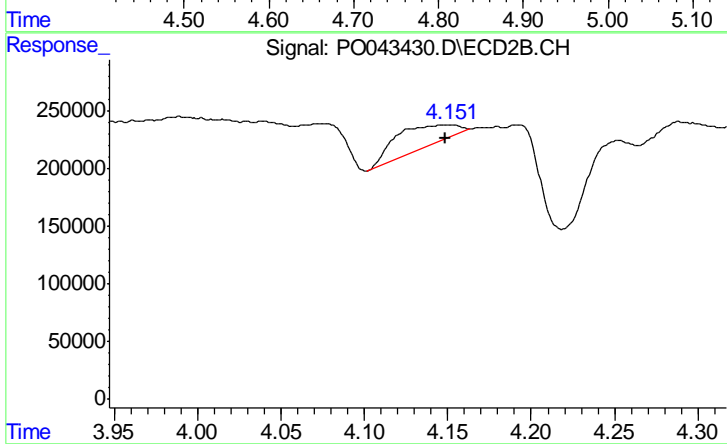
Instrument :  
 ECD\_O  
 ClientSampled :  
 N4DL



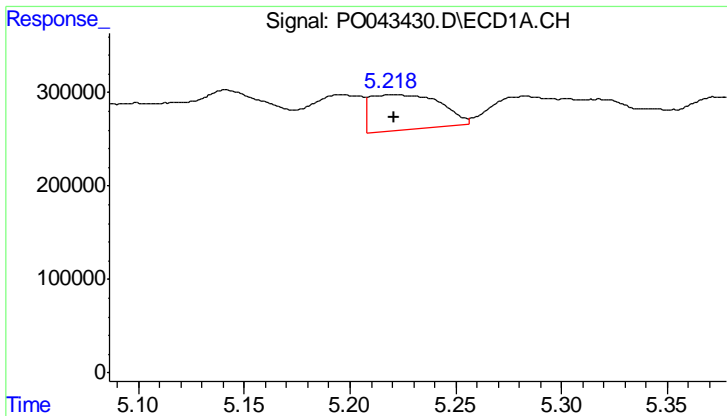
#15 AR-1232-5  
 R.T.: 4.581 min  
 Delta R.T.: -0.002 min  
 Response: 2570531  
 Conc: 1050.07 ng/ml



#16 AR-1242-1  
 R.T.: 4.764 min  
 Delta R.T.: 0.008 min  
 Response: 3404377  
 Conc: 966.90 ng/ml



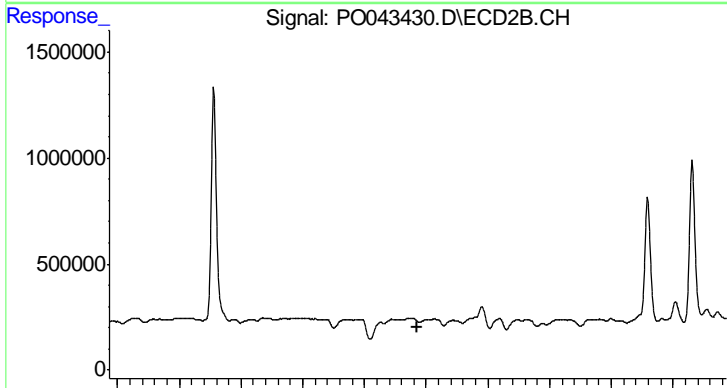
#16 AR-1242-1  
 R.T.: 4.151 min  
 Delta R.T.: 0.002 min  
 Response: 462675  
 Conc: 92.07 ng/ml



#17 AR-1242-2

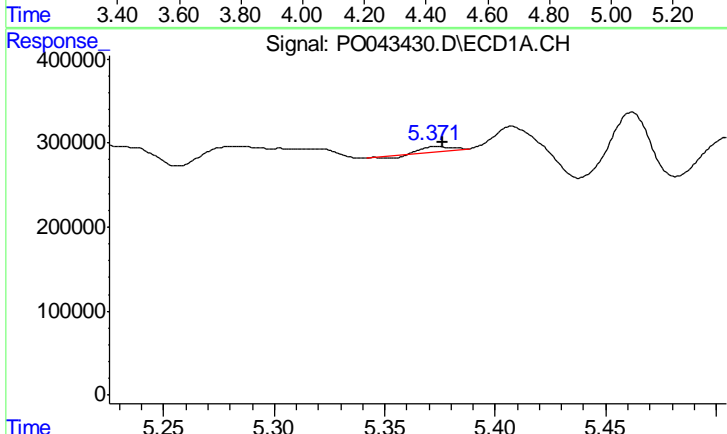
R.T.: 5.221 min  
 Delta R.T.: 0.000 min  
 Response: 874691  
 Conc: 105.38 ng/ml

Instrument :  
 ECD\_O  
 ClientSampled :  
 N4DL



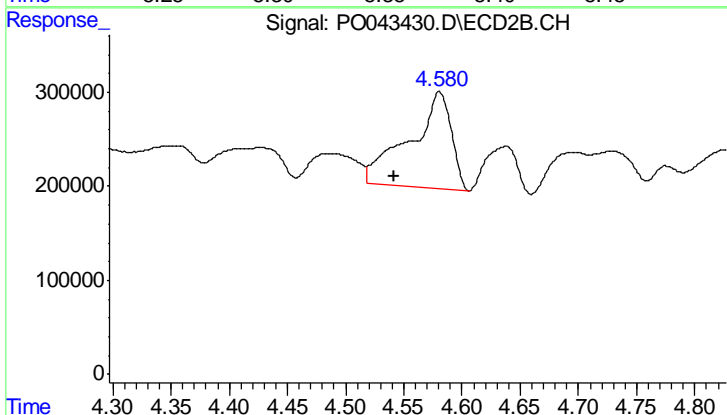
#17 AR-1242-2

R.T.: 0.000 min  
 Exp R.T.: 4.373 min  
 Response: 0  
 Conc: N.D.



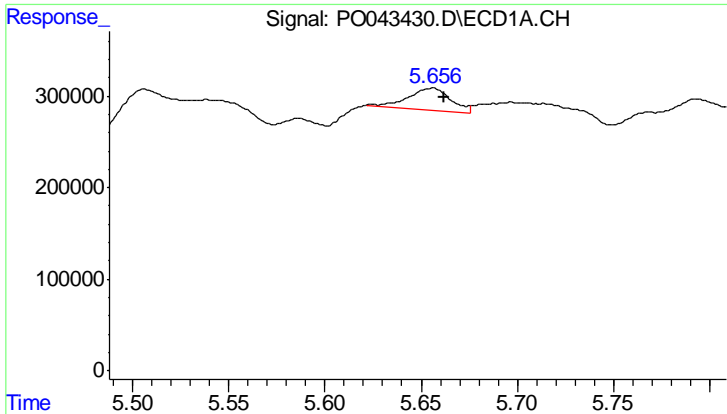
#18 AR-1242-3

R.T.: 5.374 min  
 Delta R.T.: -0.002 min  
 Response: 36593  
 Conc: 8.46 ng/ml



#18 AR-1242-3

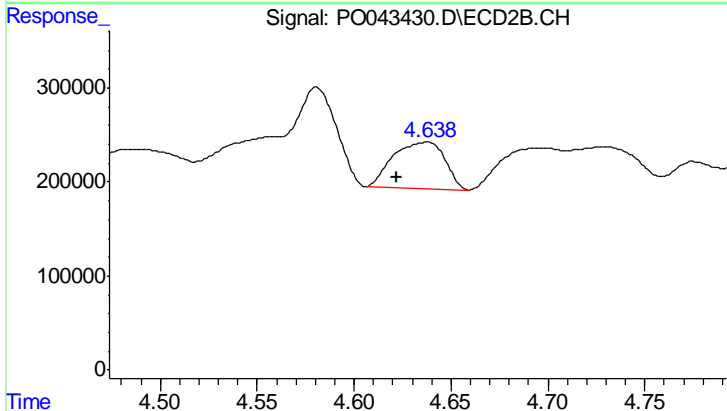
R.T.: 4.581 min  
 Delta R.T.: 0.039 min  
 Response: 2570531  
 Conc: 448.01 ng/ml



#19 AR-1242-4

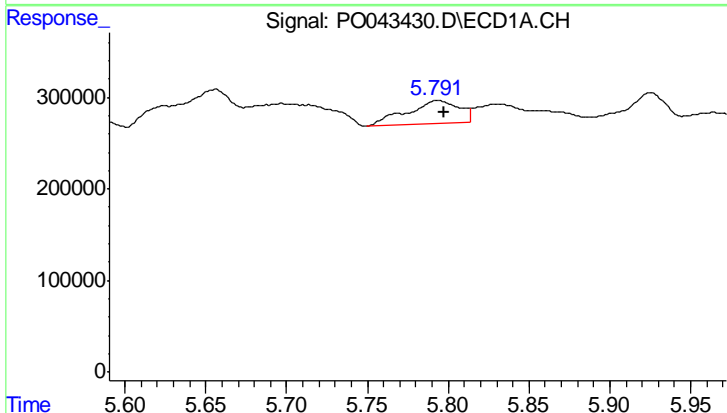
R.T.: 5.655 min  
 Delta R.T.: -0.007 min  
 Response: 371755  
 Conc: 89.13 ng/ml

Instrument :  
 ECD\_O  
 ClientSampled :  
 N4DL



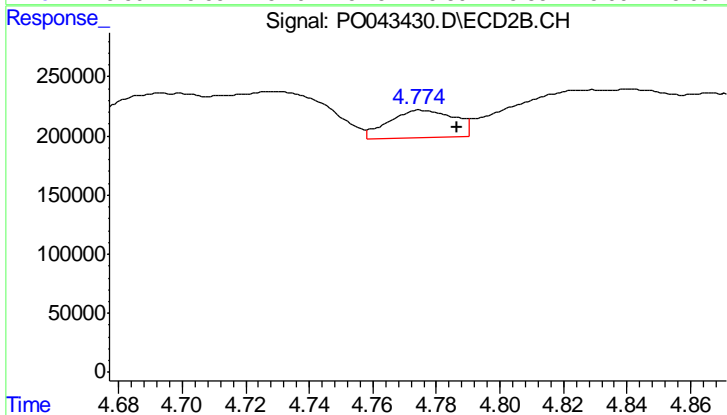
#19 AR-1242-4

R.T.: 4.638 min  
 Delta R.T.: 0.016 min  
 Response: 914881  
 Conc: 160.13 ng/ml



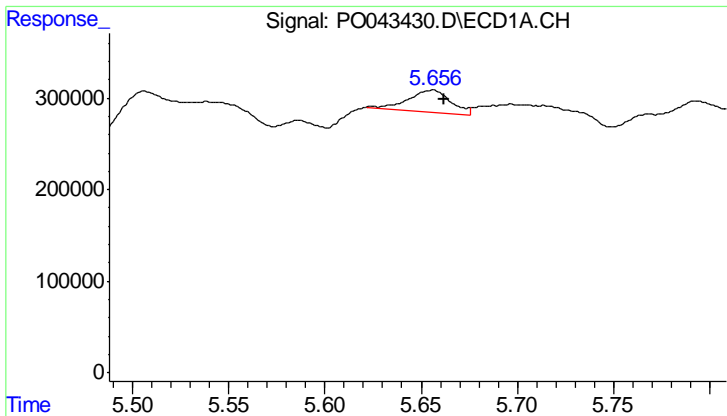
#20 AR-1242-5

R.T.: 5.794 min  
 Delta R.T.: -0.004 min  
 Response: 553168  
 Conc: 117.07 ng/ml



#20 AR-1242-5

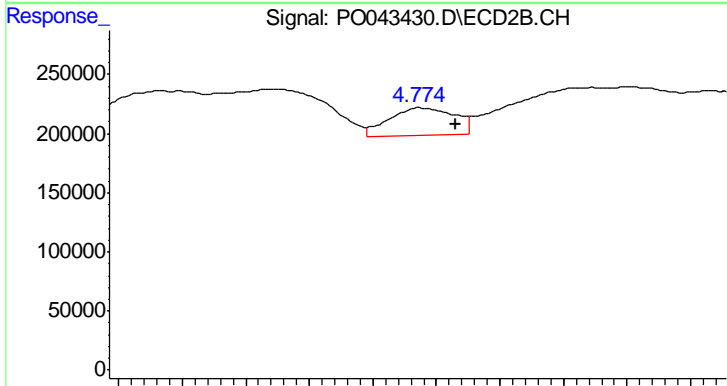
R.T.: 4.775 min  
 Delta R.T.: -0.011 min  
 Response: 340642  
 Conc: 54.85 ng/ml



#21 AR-1248-1

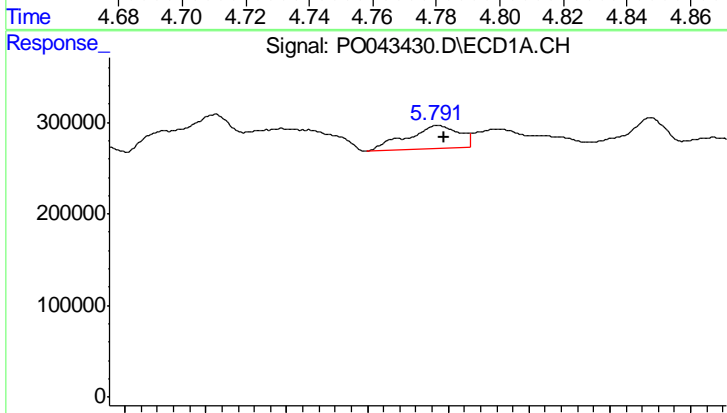
R.T.: 5.655 min  
 Delta R.T.: -0.007 min  
 Response: 371755  
 Conc: 49.34 ng/ml

Instrument :  
 ECD\_O  
 ClientSampled :  
 N4DL



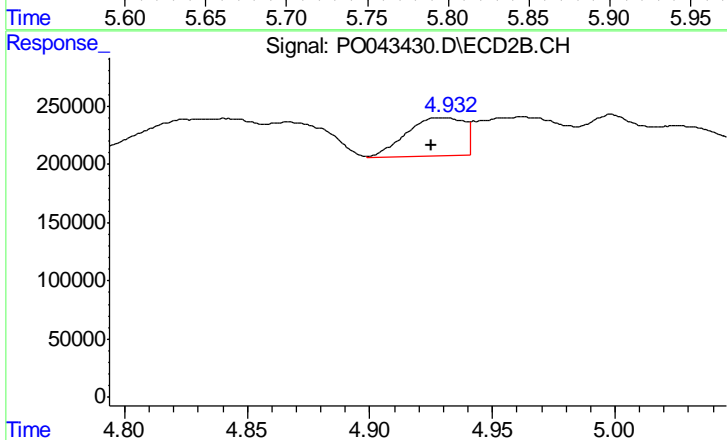
#21 AR-1248-1

R.T.: 4.775 min  
 Delta R.T.: -0.011 min  
 Response: 340642  
 Conc: 30.08 ng/ml



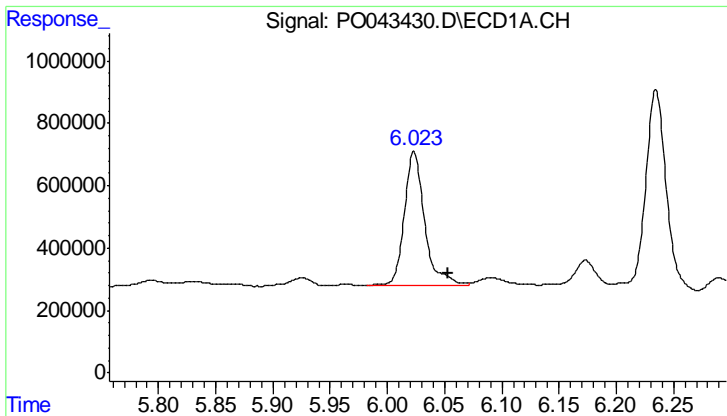
#22 AR-1248-2

R.T.: 5.794 min  
 Delta R.T.: -0.004 min  
 Response: 553168  
 Conc: 83.02 ng/ml



#22 AR-1248-2

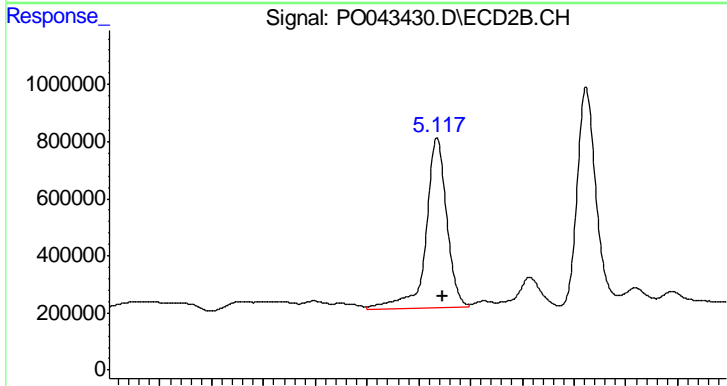
R.T.: 4.931 min  
 Delta R.T.: 0.005 min  
 Response: 542288  
 Conc: 49.47 ng/ml



#23 AR-1248-3

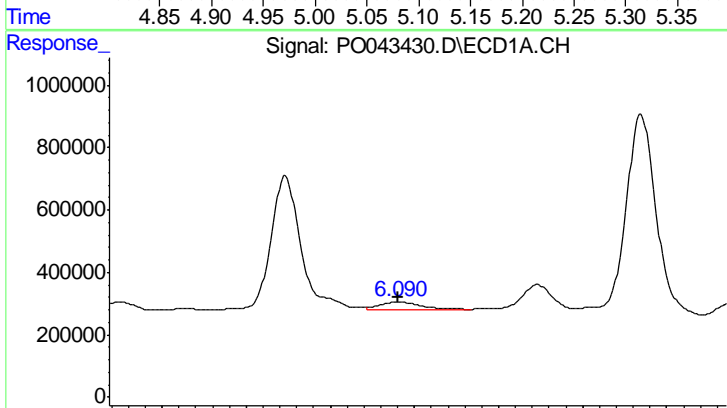
R.T.: 6.023 min  
 Delta R.T.: -0.030 min  
 Response: 5286499  
 Conc: 575.39 ng/ml

Instrument :  
 ECD\_O  
 ClientSampled :  
 N4DL



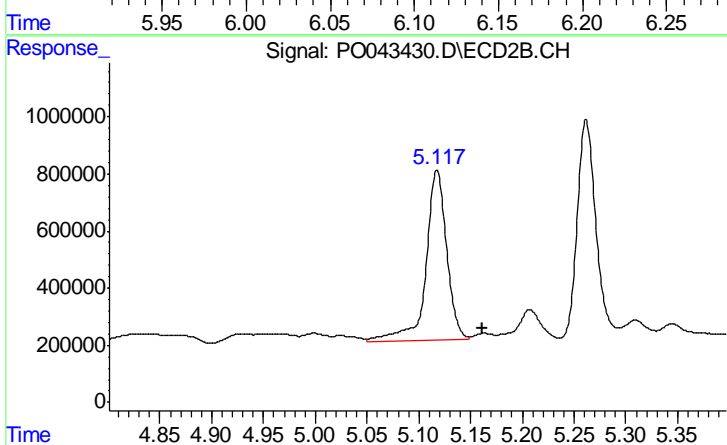
#23 AR-1248-3

R.T.: 5.117 min  
 Delta R.T.: -0.006 min  
 Response: 8297606  
 Conc: 475.54 ng/ml



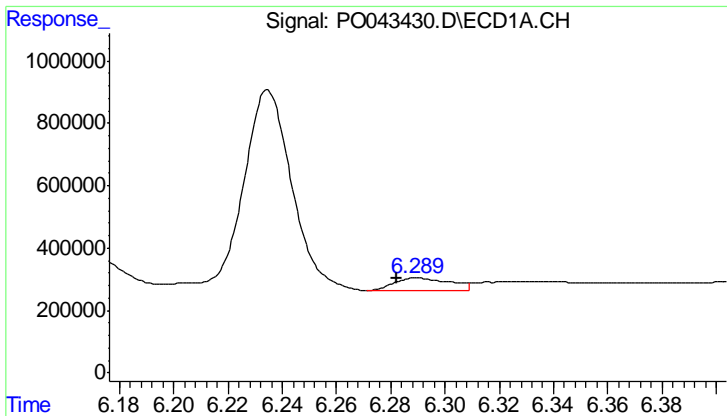
#24 AR-1248-4

R.T.: 6.091 min  
 Delta R.T.: 0.000 min  
 Response: 389381  
 Conc: 42.16 ng/ml



#24 AR-1248-4

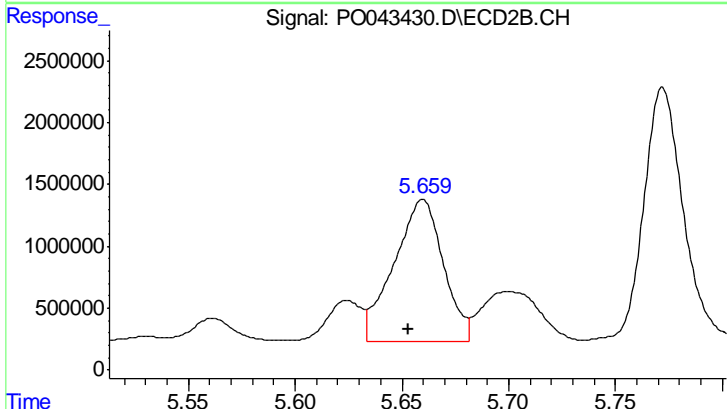
R.T.: 5.117 min  
 Delta R.T.: -0.044 min  
 Response: 8297606  
 Conc: 582.75 ng/ml



#25 AR-1248-5

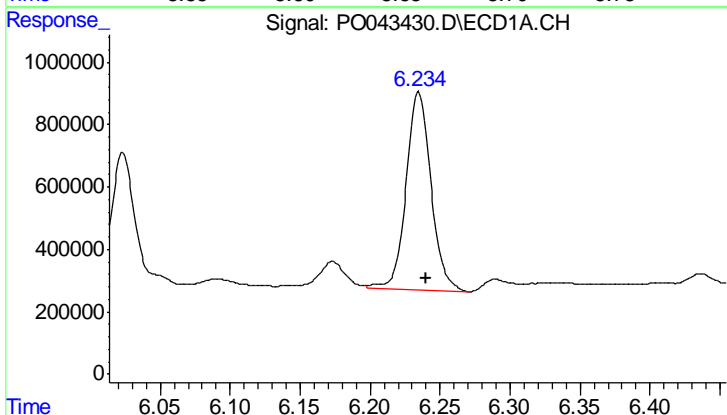
R.T.: 6.290 min  
 Delta R.T.: 0.008 min  
 Response: 556598  
 Conc: 88.42 ng/ml

Instrument :  
 ECD\_O  
 ClientSampled :  
 N4DL



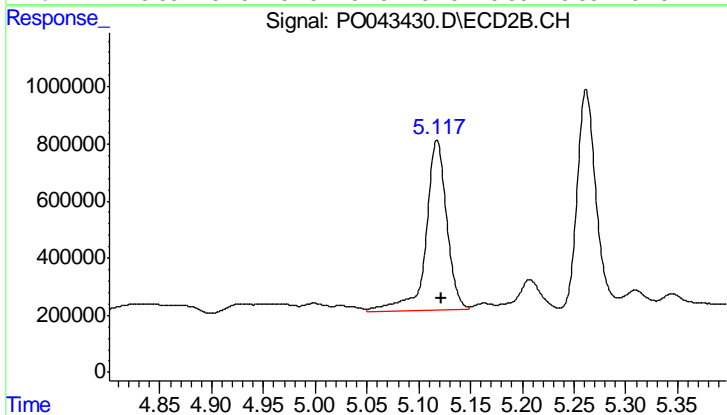
#25 AR-1248-5

R.T.: 5.660 min  
 Delta R.T.: 0.007 min  
 Response: 18418366  
 Conc: 2256.73 ng/ml



#26 AR-1254-1

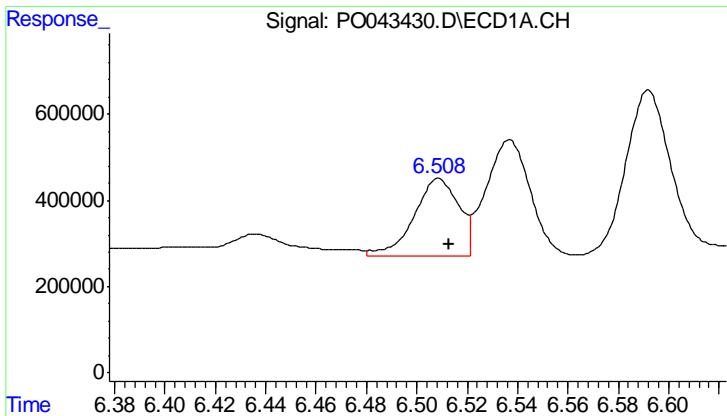
R.T.: 6.235 min  
 Delta R.T.: -0.005 min  
 Response: 7812103  
 Conc: 490.65 ng/ml



#26 AR-1254-1

R.T.: 5.117 min  
 Delta R.T.: -0.004 min  
 Response: 8297606  
 Conc: 386.32 ng/ml

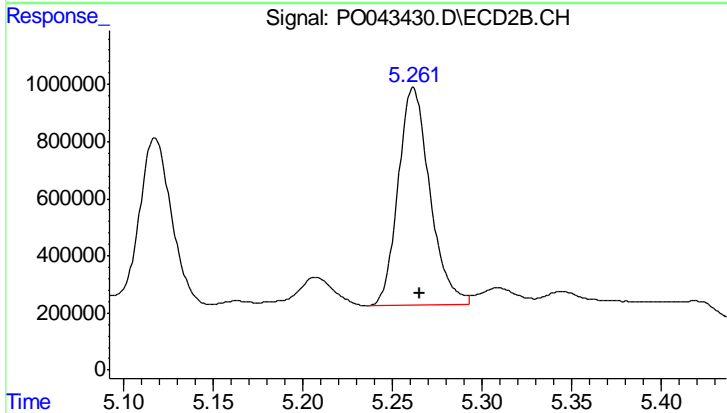




#27 AR-1254-2

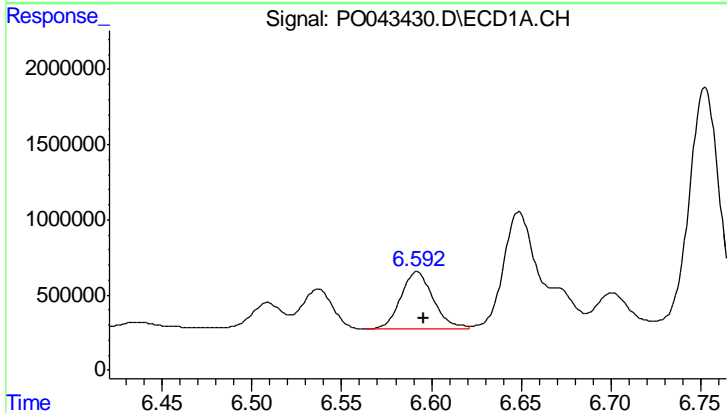
R.T.: 6.509 min  
 Delta R.T.: -0.004 min  
 Response: 2188815  
 Conc: 212.22 ng/ml

Instrument :  
 ECD\_O  
 ClientSampled :  
 N4DL



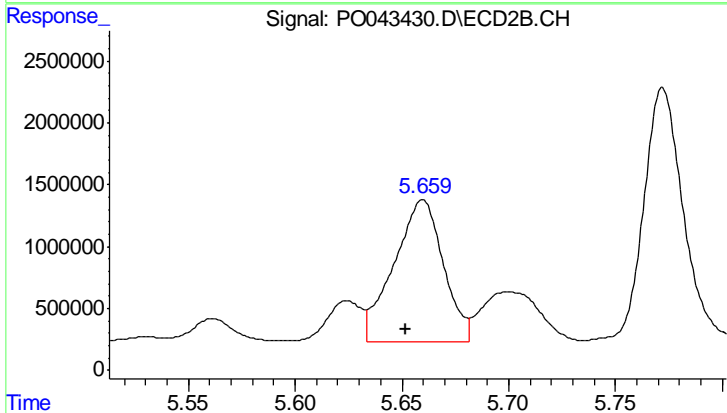
#27 AR-1254-2

R.T.: 5.262 min  
 Delta R.T.: -0.003 min  
 Response: 9400244  
 Conc: 487.88 ng/ml



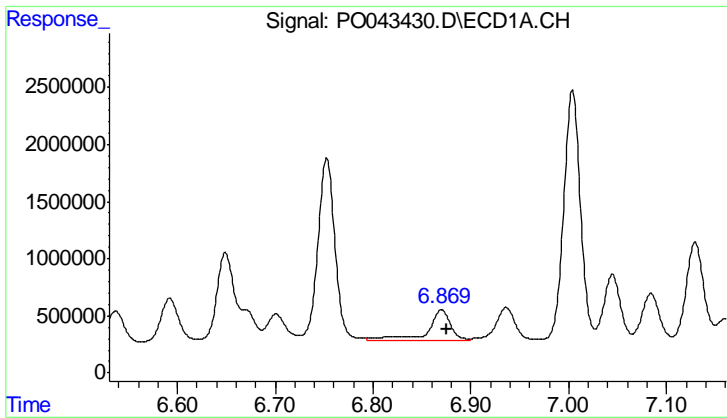
#28 AR-1254-3

R.T.: 6.592 min  
 Delta R.T.: -0.004 min  
 Response: 4808369  
 Conc: 266.68 ng/ml



#28 AR-1254-3

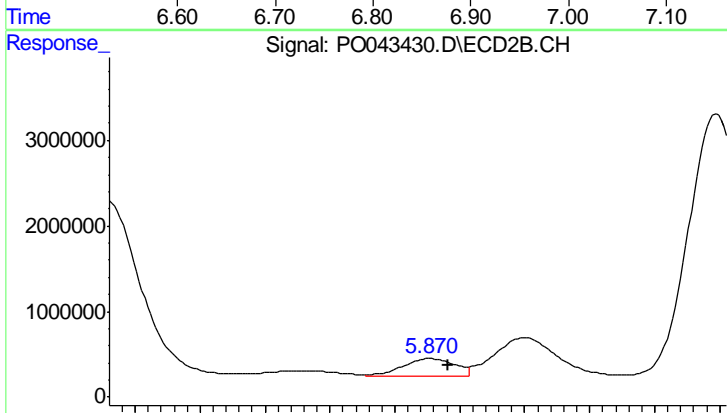
R.T.: 5.660 min  
 Delta R.T.: 0.008 min  
 Response: 18418366  
 Conc: 574.90 ng/ml



#29 AR-1254-4

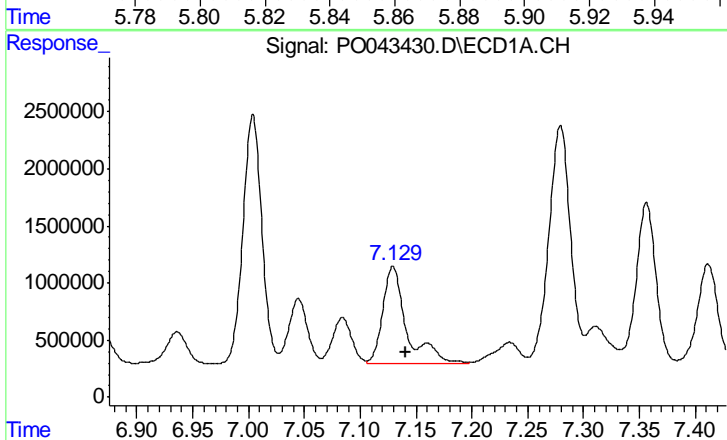
R.T.: 6.870 min  
 Delta R.T.: -0.005 min  
 Response: 4594811  
 Conc: 308.68 ng/ml

Instrument :  
 ECD\_O  
 ClientSampled :  
 N4DL



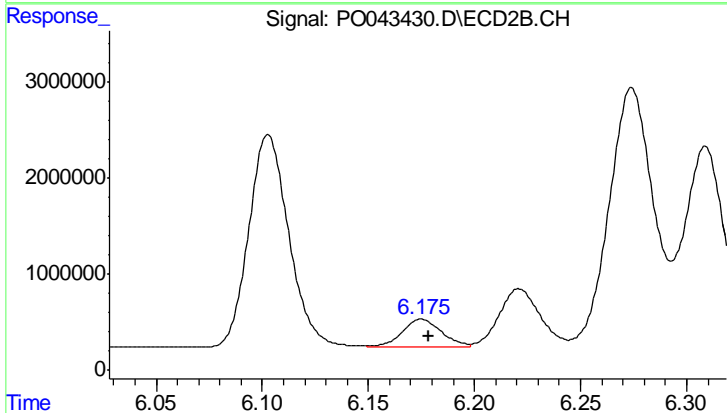
#29 AR-1254-4

R.T.: 5.871 min  
 Delta R.T.: -0.005 min  
 Response: 2444072  
 Conc: 92.20 ng/ml



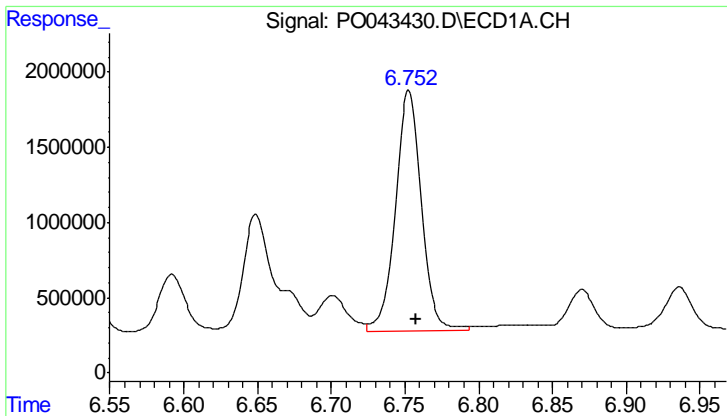
#30 AR-1254-5

R.T.: 7.129 min  
 Delta R.T.: -0.011 min  
 Response: 12952944  
 Conc: 1188.99 ng/ml



#30 AR-1254-5

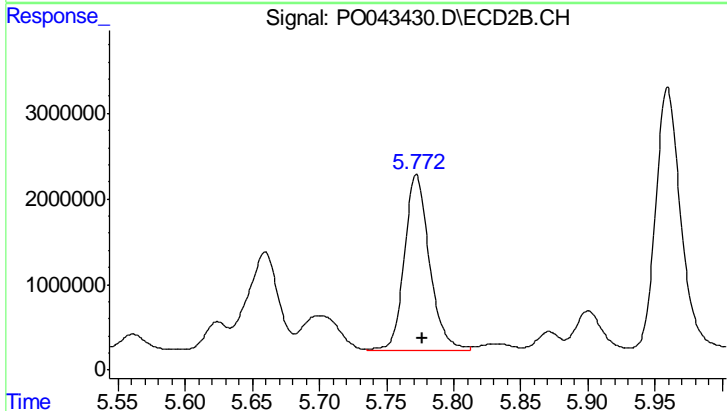
R.T.: 6.175 min  
 Delta R.T.: -0.004 min  
 Response: 3774487  
 Conc: 254.53 ng/ml



#31 AR-1260-1

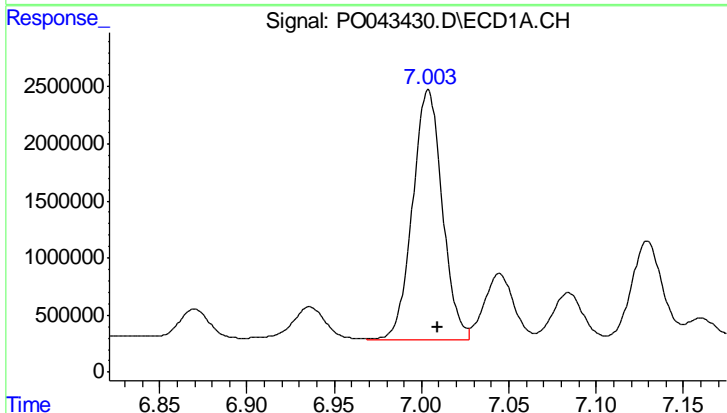
R.T.: 6.753 min  
 Delta R.T.: -0.005 min  
 Response: 19663534  
 Conc: 1399.10 ng/ml

Instrument :  
 ECD\_O  
 ClientSampled :  
 N4DL



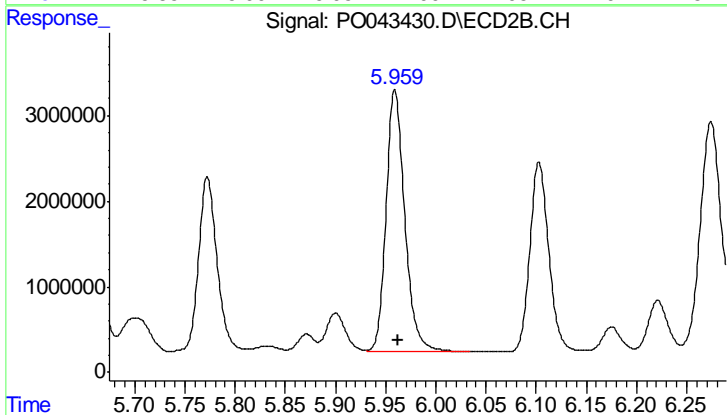
#31 AR-1260-1

R.T.: 5.772 min  
 Delta R.T.: -0.004 min  
 Response: 26396533  
 Conc: 1177.99 ng/ml



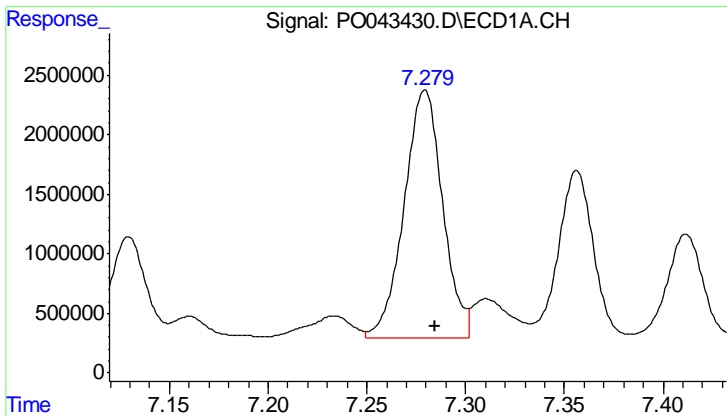
#32 AR-1260-2

R.T.: 7.004 min  
 Delta R.T.: -0.005 min  
 Response: 25891334  
 Conc: 1425.86 ng/ml



#32 AR-1260-2

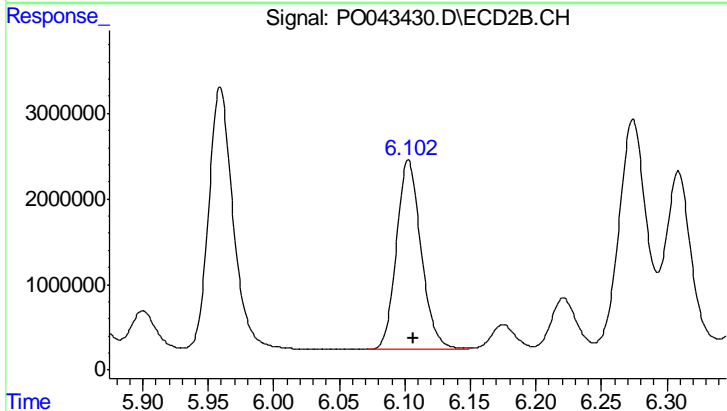
R.T.: 5.959 min  
 Delta R.T.: -0.004 min  
 Response: 39922389  
 Conc: 1235.24 ng/ml



#33 AR-1260-3

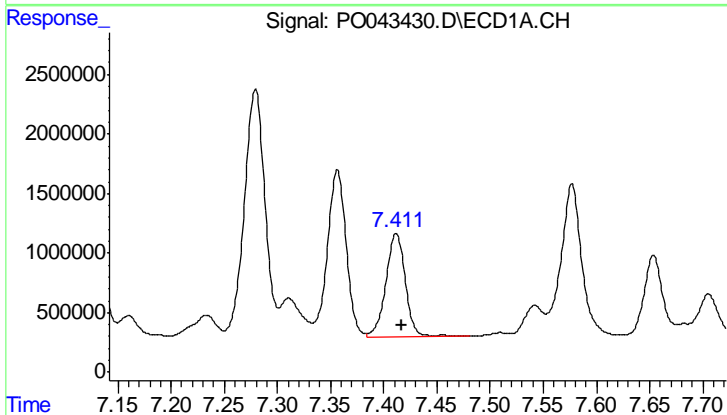
R.T.: 7.279 min  
 Delta R.T.: -0.005 min  
 Response: 28256575  
 Conc: 1390.30 ng/ml

Instrument :  
 ECD\_O  
 ClientSampled :  
 N4DL



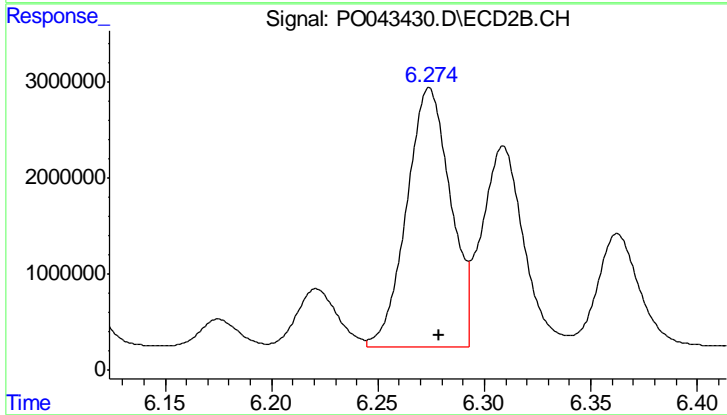
#33 AR-1260-3

R.T.: 6.103 min  
 Delta R.T.: -0.004 min  
 Response: 29089075  
 Conc: 1108.48 ng/ml



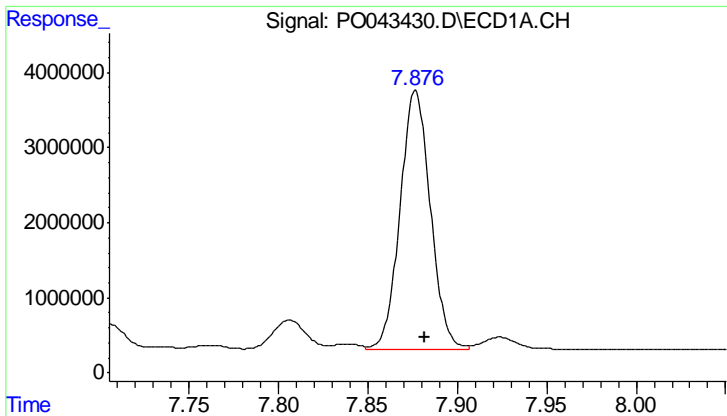
#34 AR-1260-4

R.T.: 7.412 min  
 Delta R.T.: -0.005 min  
 Response: 11088618  
 Conc: 1512.54 ng/ml



#34 AR-1260-4

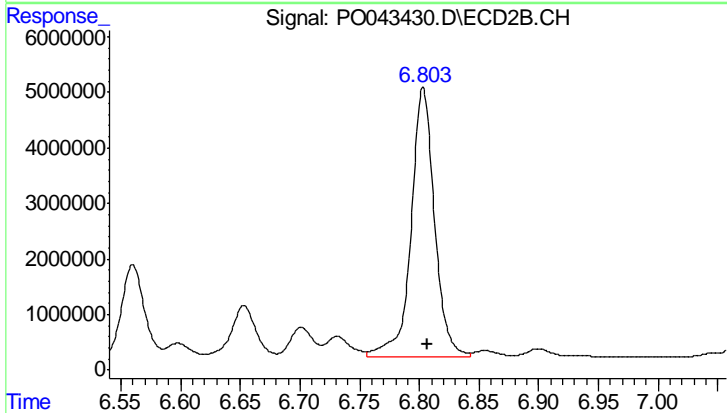
R.T.: 6.274 min  
 Delta R.T.: -0.004 min  
 Response: 38737511  
 Conc: 1262.50 ng/ml



#35 AR-1260-5

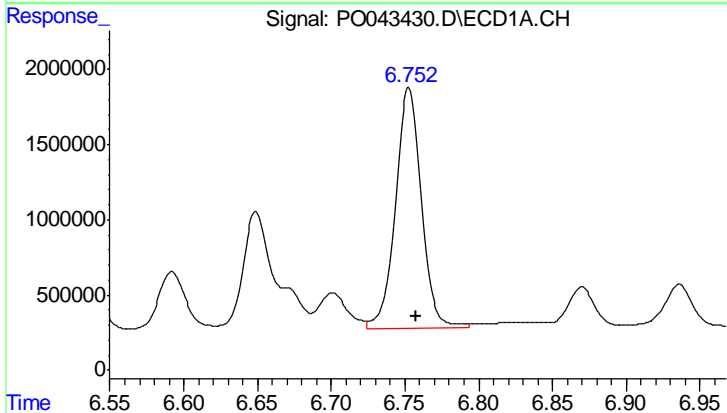
R.T.: 7.877 min  
 Delta R.T.: -0.005 min  
 Response: 40650272  
 Conc: 1334.65 ng/ml

Instrument :  
 ECD\_O  
 ClientSampled :  
 N4DL



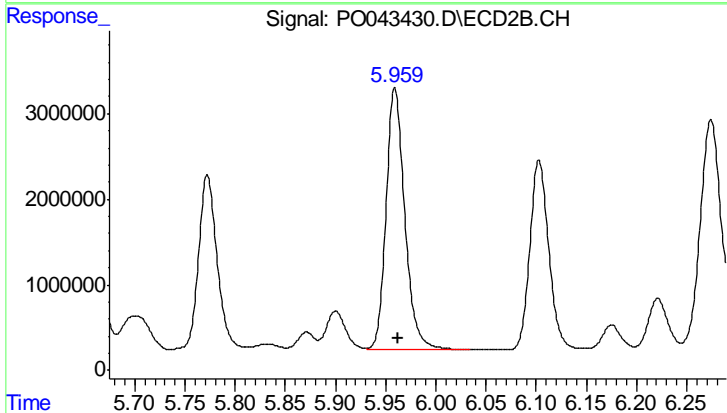
#35 AR-1260-5

R.T.: 6.803 min  
 Delta R.T.: -0.004 min  
 Response: 65903211  
 Conc: 1132.17 ng/ml



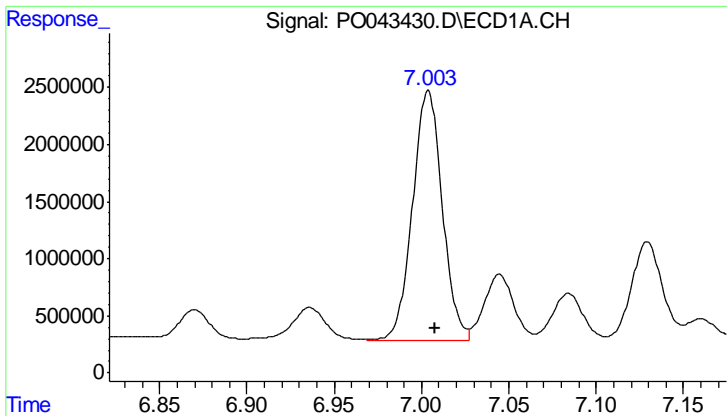
#36 AR-1262-1

R.T.: 6.753 min  
 Delta R.T.: -0.005 min  
 Response: 19663534  
 Conc: 1849.97 ng/ml



#36 AR-1262-1

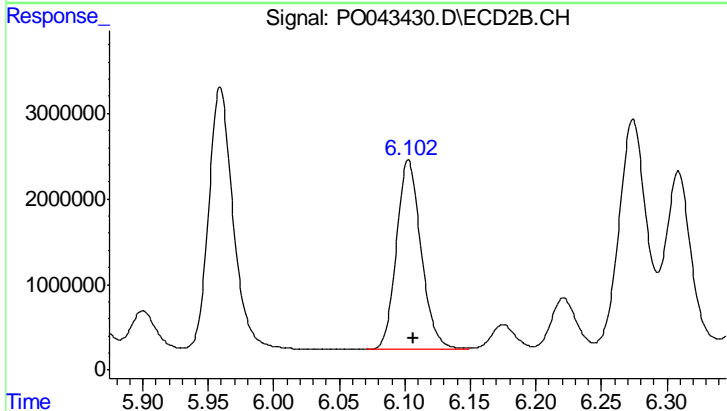
R.T.: 5.959 min  
 Delta R.T.: -0.003 min  
 Response: 39922389  
 Conc: 1739.02 ng/ml



#37 AR-1262-2

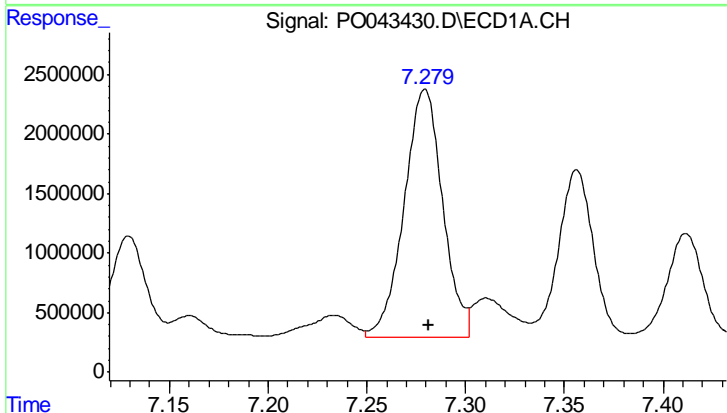
R.T.: 7.004 min  
 Delta R.T.: -0.004 min  
 Response: 25891334  
 Conc: 1922.24 ng/ml

Instrument :  
 ECD\_O  
 ClientSampled :  
 N4DL



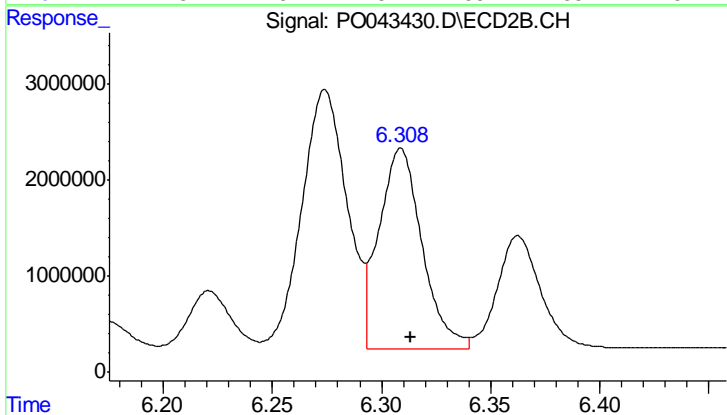
#37 AR-1262-2

R.T.: 6.103 min  
 Delta R.T.: -0.004 min  
 Response: 29089075  
 Conc: 1391.25 ng/ml



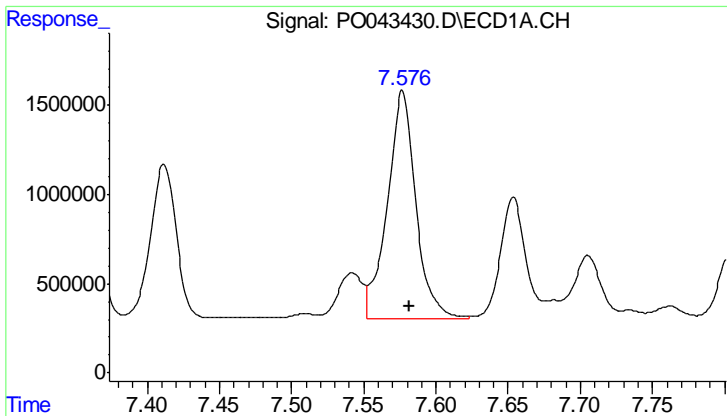
#38 AR-1262-3

R.T.: 7.279 min  
 Delta R.T.: -0.002 min  
 Response: 28256575  
 Conc: 2265.18 ng/ml



#38 AR-1262-3

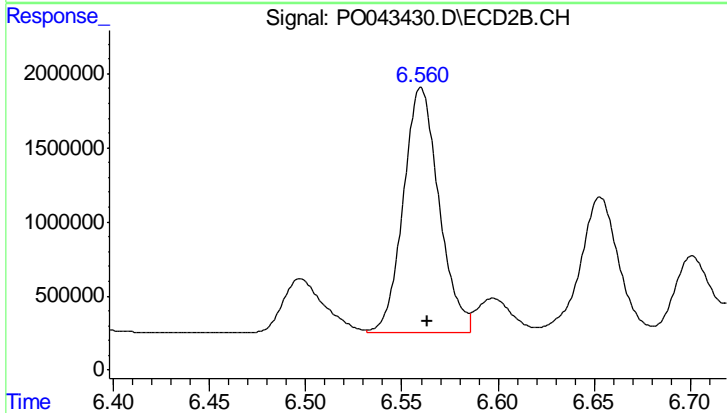
R.T.: 6.309 min  
 Delta R.T.: -0.004 min  
 Response: 28725391  
 Conc: 772.45 ng/ml



#39 AR-1262-4

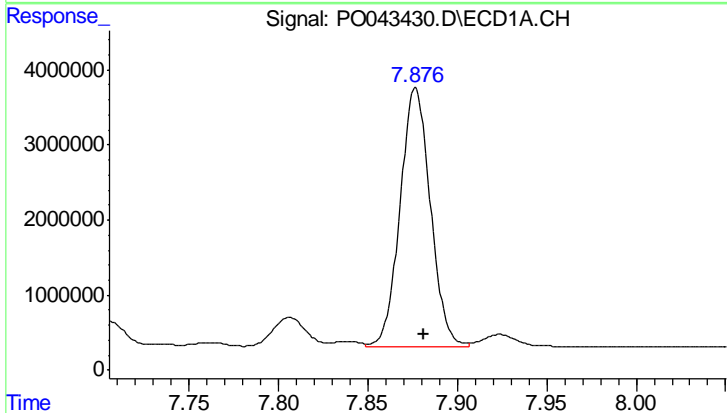
R.T.: 7.577 min  
 Delta R.T.: -0.005 min  
 Response: 17515915  
 Conc: 1047.56 ng/ml

Instrument :  
 ECD\_O  
 ClientSampleId :  
 N4DL



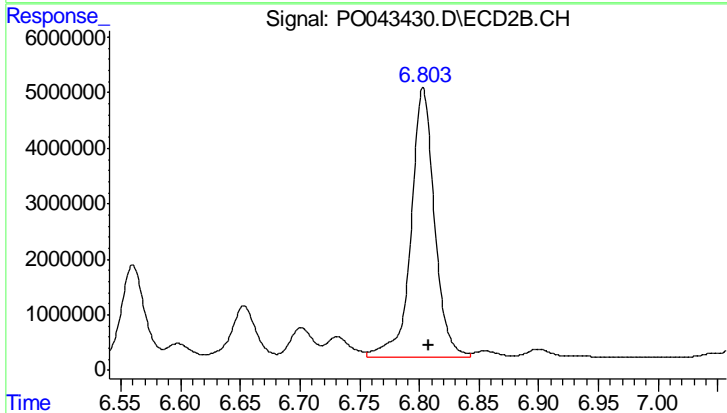
#39 AR-1262-4

R.T.: 6.560 min  
 Delta R.T.: -0.003 min  
 Response: 21418642  
 Conc: 740.58 ng/ml



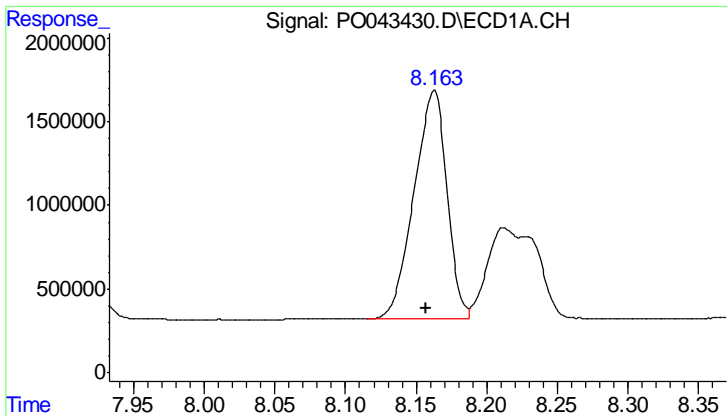
#40 AR-1262-5

R.T.: 7.877 min  
 Delta R.T.: -0.005 min  
 Response: 40650272  
 Conc: 1194.64 ng/ml



#40 AR-1262-5

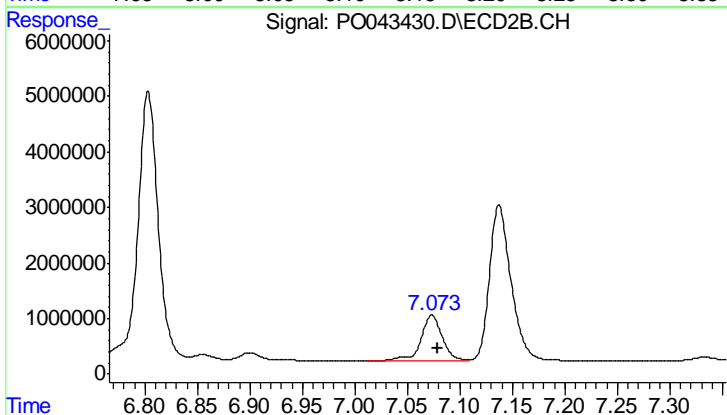
R.T.: 6.803 min  
 Delta R.T.: -0.004 min  
 Response: 65903211  
 Conc: 1033.94 ng/ml



#41 AR-1268-1

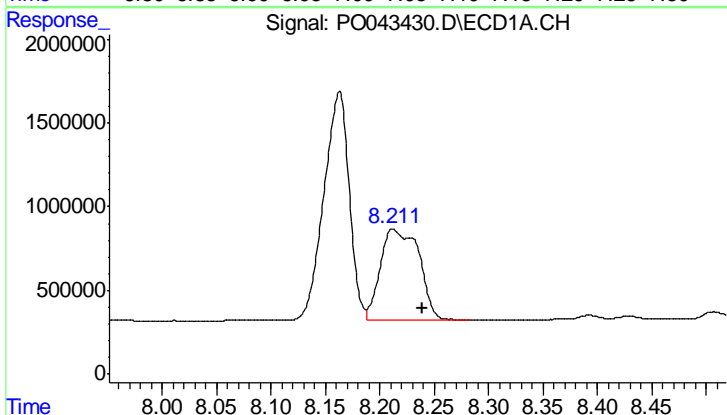
R.T.: 8.162 min  
 Delta R.T.: 0.005 min  
 Response: 22114245  
 Conc: 426.72 ng/ml

Instrument :  
 ECD\_O  
 ClientSampled :  
 N4DL



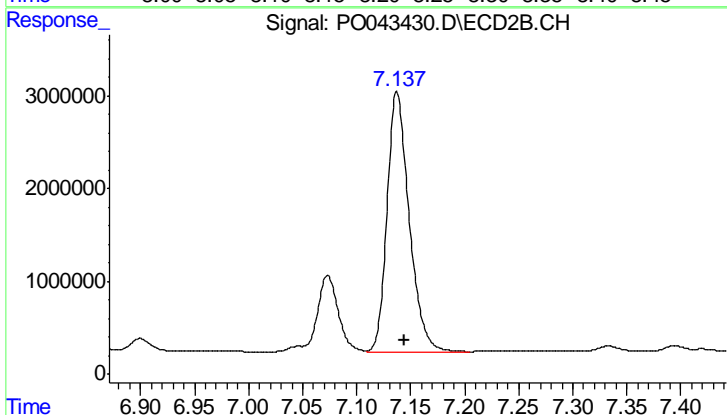
#41 AR-1268-1

R.T.: 7.073 min  
 Delta R.T.: -0.005 min  
 Response: 11400324  
 Conc: 118.44 ng/ml



#42 AR-1268-2

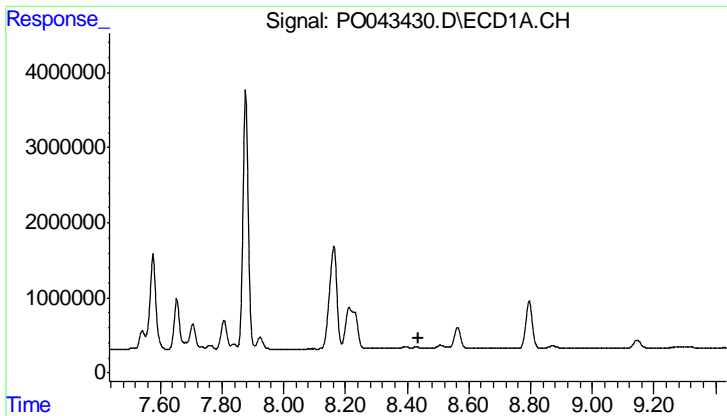
R.T.: 8.213 min  
 Delta R.T.: -0.026 min  
 Response: 13366921  
 Conc: 288.12 ng/ml



#42 AR-1268-2

R.T.: 7.137 min  
 Delta R.T.: -0.007 min  
 Response: 39733070  
 Conc: 456.51 ng/ml

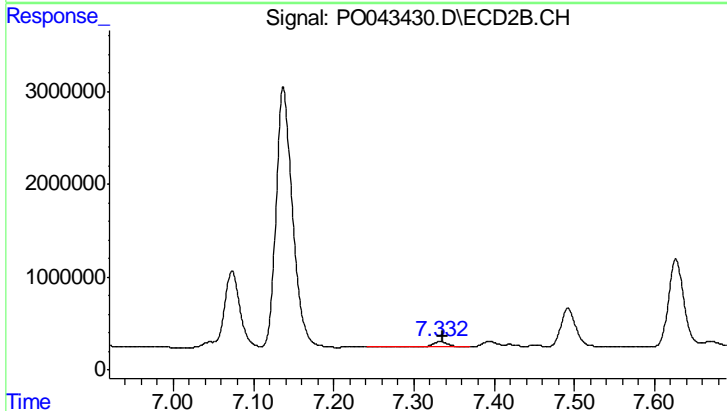




#43 AR-1268-3

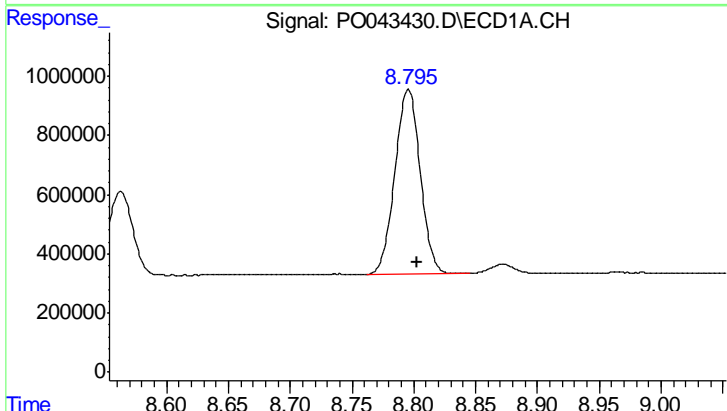
R.T.: 8.429 min  
 Delta R.T.: -0.007 min  
 Response: -167511  
 Conc: N.D.

Instrument :  
 ECD\_O  
 ClientSampleId :  
 N4DL



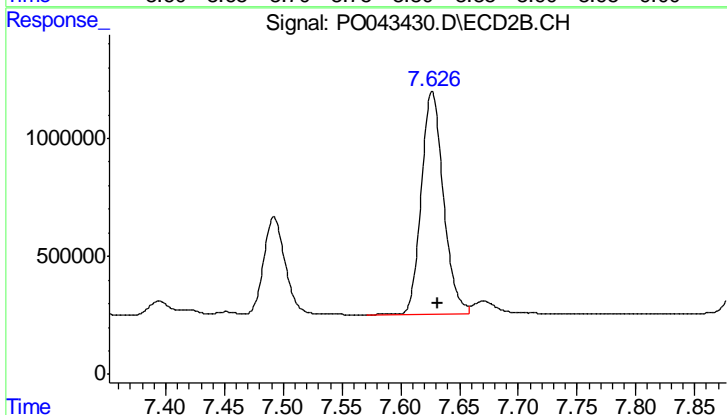
#43 AR-1268-3

R.T.: 7.333 min  
 Delta R.T.: -0.003 min  
 Response: 740100  
 Conc: 10.06 ng/ml



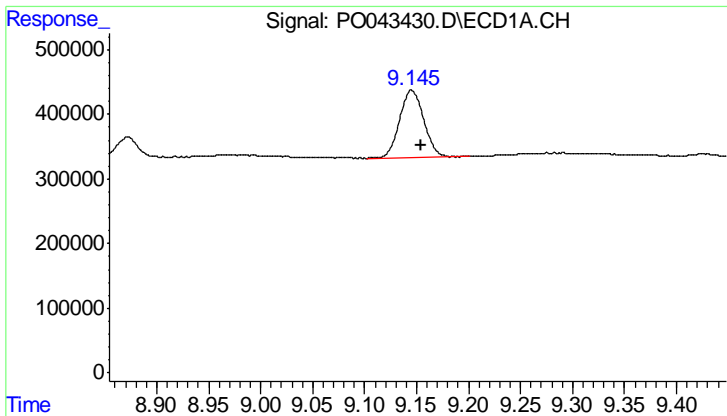
#44 AR-1268-4

R.T.: 8.796 min  
 Delta R.T.: -0.007 min  
 Response: 8931743  
 Conc: 527.65 ng/ml



#44 AR-1268-4

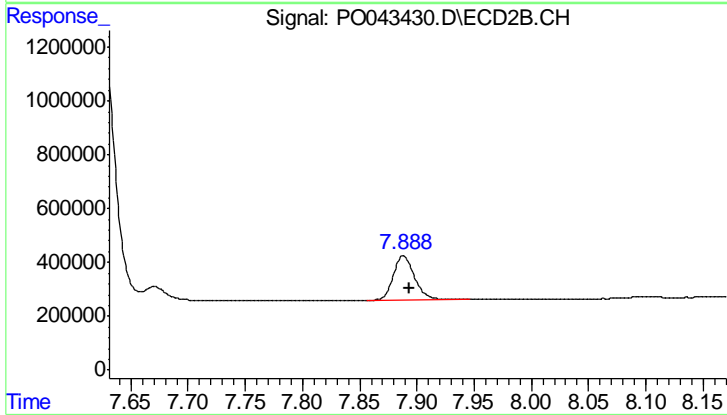
R.T.: 7.627 min  
 Delta R.T.: -0.005 min  
 Response: 12415887  
 Conc: 420.88 ng/ml



#45 AR-1268-5

R.T.: 9.145 min  
Delta R.T.: -0.009 min  
Response: 1681145  
Conc: 15.11 ng/ml

Instrument :  
ECD\_O  
ClientSampled :  
N4DL



#45 AR-1268-5

R.T.: 7.888 min  
Delta R.T.: -0.006 min  
Response: 2150987  
Conc: 11.10 ng/ml