

Data Path : P:\HPCHEM1\ECD\_O\Data\PO033018\  
 Data File : PO043402.D  
 Signal(s) : Signal #1: ECD1A.CH Signal #2: ECD2B.CH  
 Acq On : 30 Mar 2018 10:22  
 Operator : SM/UA  
 Sample : AR1660CCC500  
 Misc :  
 ALS Vial : 3 Sample Multiplier: 1

**Instrument :**  
 ECD\_O  
**ClientSampleId :**  
 AR1660CCC500

**Manual Integrations**  
**APPROVED**  
 UGO  
 4/2/2018 1:03:25 PM

Integration File signal 1: autoint1.e  
 Integration File signal 2: autoint2.e  
 Quant Time: Mar 30 12:58:03 2018  
 Quant Method : P:\HPCHEM1\ECD\_O\methods\PO032318.M  
 Quant Title : GC EXTRACTABLES  
 QLast Update : Fri Mar 23 05:22:35 2018  
 Response via : Initial Calibration  
 Integrator: ChemStation 6890 Scale Mode: Small noise peaks clipped

Volume Inj. : 2 µl  
 Signal #1 Phase : ZB-MR1 Signal #2 Phase: ZB-MR2  
 Signal #1 Info : 30Mx0.32mmx 0.50µ Signal #2 Info : 30M x 0.32mm x 0.25µm

Compound	RT#1	RT#2	Resp#1	Resp#2	ng/ml	ng/ml
-----						
System Monitoring Compounds						
1) SA Tetrachlo...	4.081	3.327	12018312	17336196	56.718	59.229
2) SA Decachlor...	9.439	8.098	12377644	15574920	50.965	43.551
Target Compounds						
3) L1 AR-1016-1	4.946	4.144	2990584	4394719	525.573	545.114
4) L1 AR-1016-2	5.285	4.580	4196402	4031387	483.588	556.760
5) L1 AR-1016-3	5.380	4.618	3305671	4985062	475.414	556.261
6) L1 AR-1016-4	5.801	4.783	3531713	5063056	495.245	522.045m
7) L1 AR-1016-5	6.032	5.119	2514937	5660856	382.254m	558.010m#
31) L7 AR-1260-1	6.760	5.773	6163505	12422834	438.547m	554.391 #
32) L7 AR-1260-2	7.011	5.960	8266865	16307876	455.263m	504.581
33) L7 AR-1260-3	7.285	6.105	9553832	13327029	470.075m	507.846
34) L7 AR-1260-4	7.418	6.275	3308452	15079846	451.289m	491.469
35) L7 AR-1260-5	7.884	6.805	14985288	25809726	492.003	443.392
-----						

(f)=RT Delta > 1/2 Window (#)=Amounts differ by > 25% (m)=manual int.

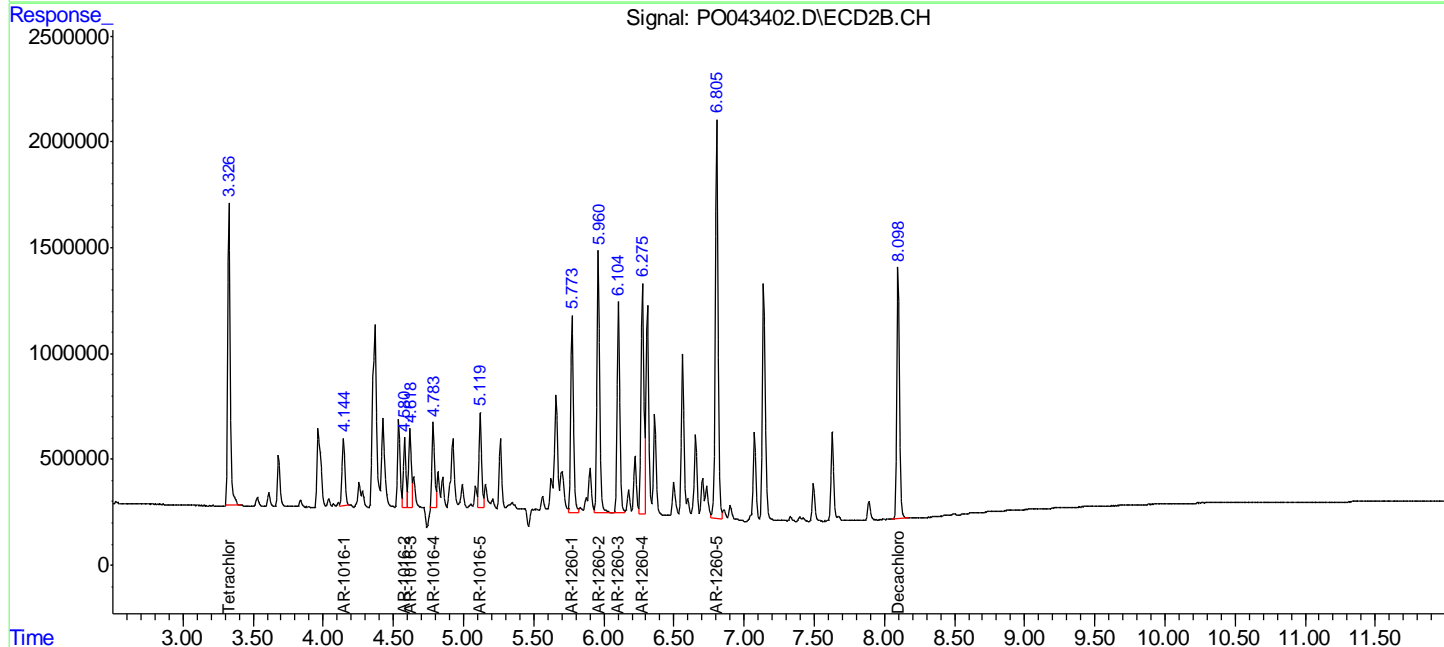
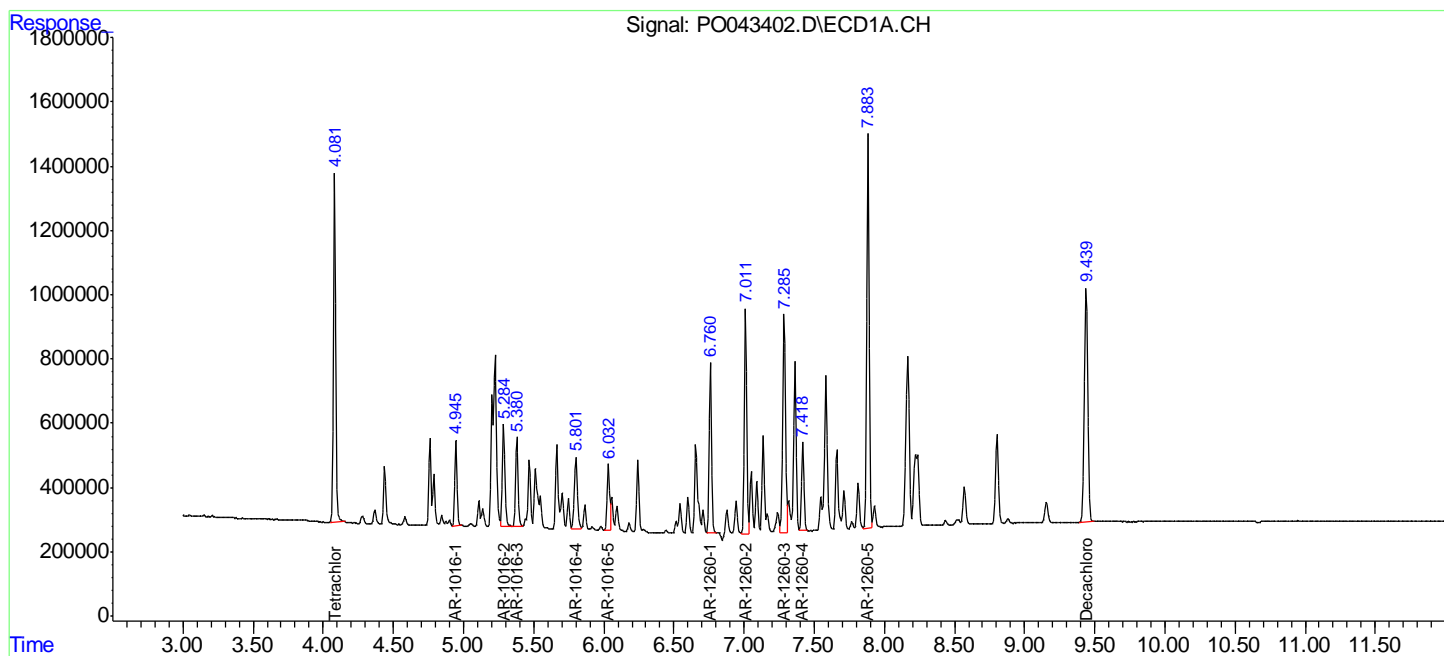
Data Path : P:\HPCHEM1\ECD\_O\Data\PO033018\  
 Data File : PO043402.D  
 Signal(s) : Signal #1: ECD1A.CH Signal #2: ECD2B.CH  
 Acq On : 30 Mar 2018 10:22  
 Operator : SM/UA  
 Sample : AR1660CCC500  
 Misc :  
 ALS Vial : 3 Sample Multiplier: 1

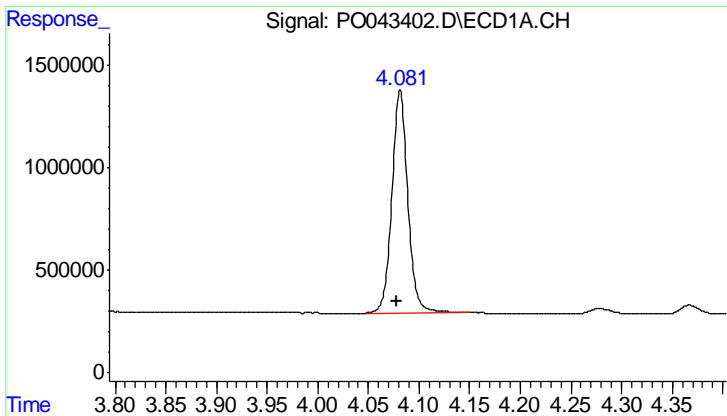
Instrument :  
 ECD\_O  
 Client Sampled :  
 AR1660CCC500

Manual Integrations  
**APPROVED**  
 UGO  
 4/2/2018 1:03:25 PM

Integration File signal 1: autoint1.e  
 Integration File signal 2: autoint2.e  
 Quant Time: Mar 30 12:58:03 2018  
 Quant Method : P:\HPCHEM1\ECD\_O\methods\PO032318.M  
 Quant Title : GC EXTRACTABLES  
 QLast Update : Fri Mar 23 05:22:35 2018  
 Response via : Initial Calibration  
 Integrator: ChemStation 6890 Scale Mode: Small noise peaks clipped

Volume Inj. : 2 µl  
 Signal #1 Phase : ZB-MR1 Signal #2 Phase: ZB-MR2  
 Signal #1 Info : 30Mx0.32mmx 0.50µ Signal #2 Info : 30M x 0.32mm x 0.25µm



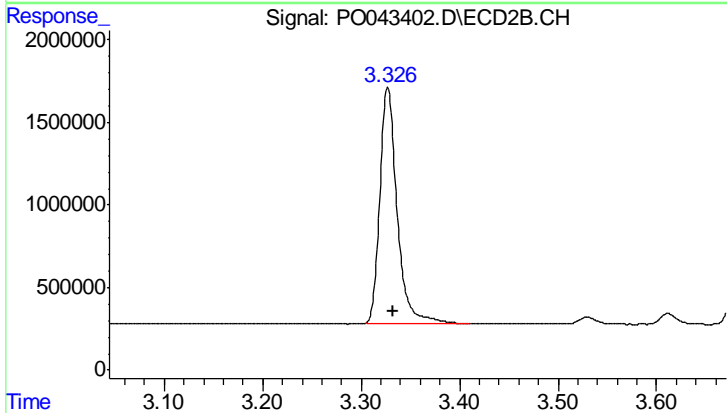


#1 Tetrachloro-m-xylene

R.T.: 4.081 min  
 Delta R.T.: 0.003 min  
 Response: 12018312  
 Conc: 56.72 ng/ml

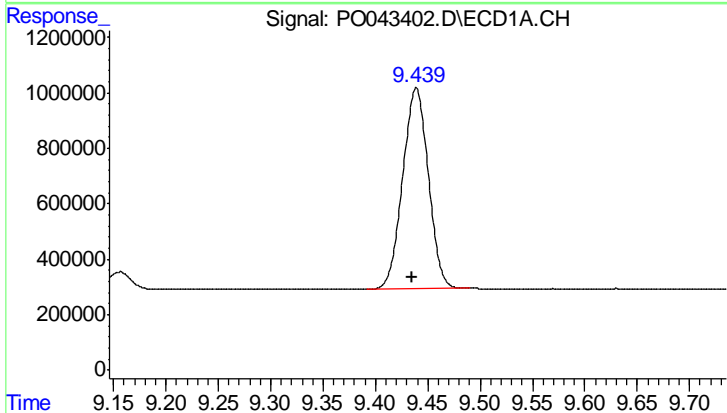
Instrument :  
 ECD\_O  
 ClientSampleId :  
 AR1660CCC500

Manual Integrations  
 APPROVED  
 UGO  
 4/2/2018 1:03:25 PM



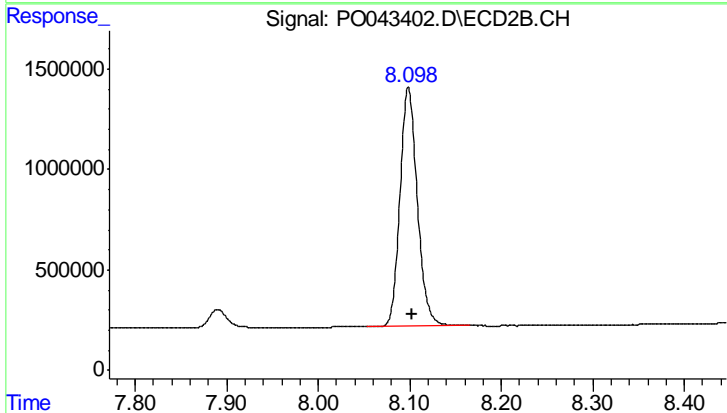
#1 Tetrachloro-m-xylene

R.T.: 3.327 min  
 Delta R.T.: -0.005 min  
 Response: 17336196  
 Conc: 59.23 ng/ml



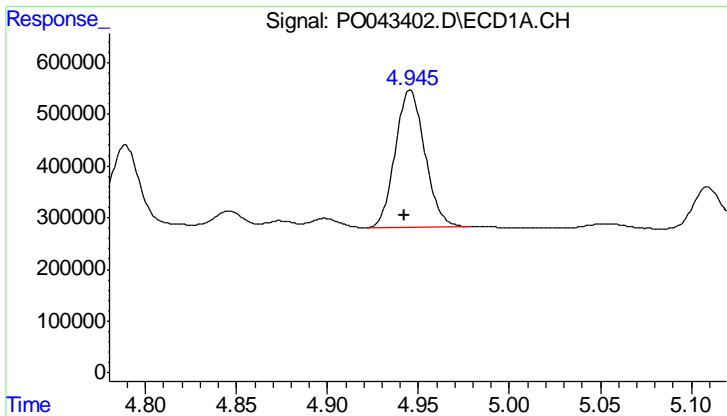
#2 Decachlorobiphenyl

R.T.: 9.439 min  
 Delta R.T.: 0.004 min  
 Response: 12377644  
 Conc: 50.96 ng/ml



#2 Decachlorobiphenyl

R.T.: 8.098 min  
 Delta R.T.: -0.003 min  
 Response: 15574920  
 Conc: 43.55 ng/ml



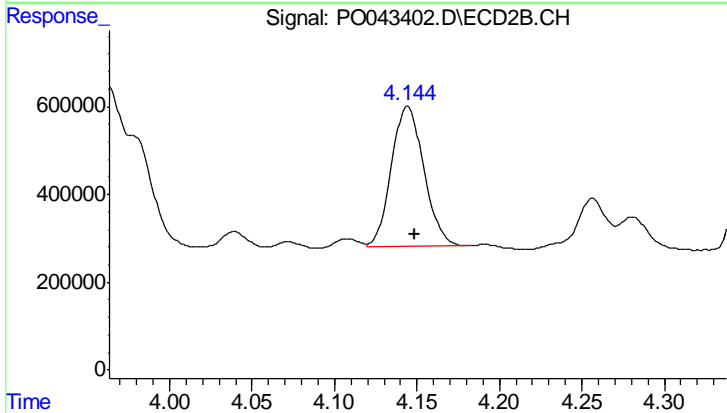
#3 AR-1016-1

R.T.: 4.946 min  
 Delta R.T.: 0.003 min  
 Response: 2990584  
 Conc: 525.57 ng/ml

Instrument :  
 ECD\_O  
 ClientSampled :  
 AR1660CCC500

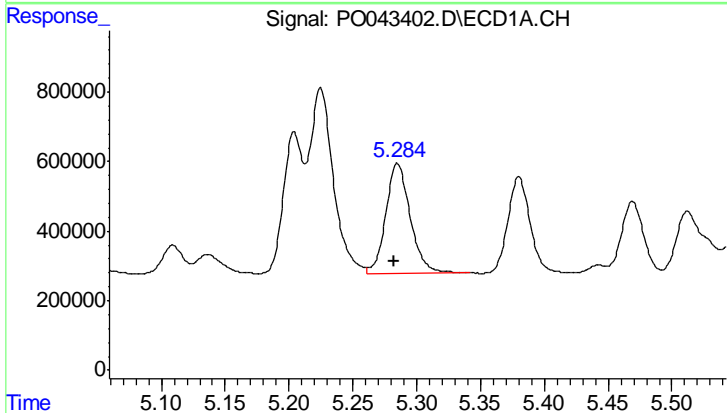
Manual Integrations  
 APPROVED

UGO  
 4/2/2018 1:03:25 PM



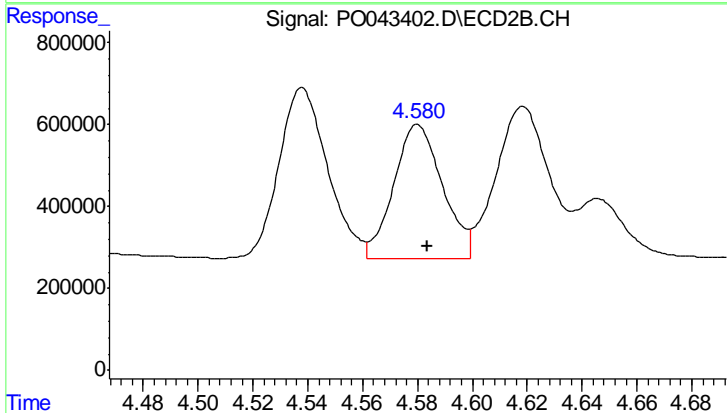
#3 AR-1016-1

R.T.: 4.144 min  
 Delta R.T.: -0.004 min  
 Response: 4394719  
 Conc: 545.11 ng/ml



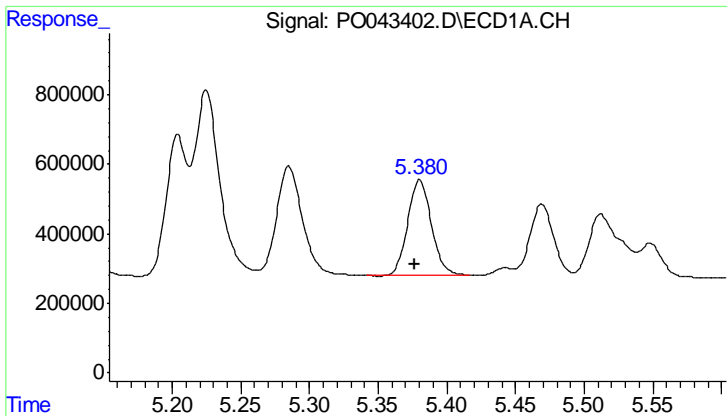
#4 AR-1016-2

R.T.: 5.285 min  
 Delta R.T.: 0.003 min  
 Response: 4196402  
 Conc: 483.59 ng/ml



#4 AR-1016-2

R.T.: 4.580 min  
 Delta R.T.: -0.004 min  
 Response: 4031387  
 Conc: 556.76 ng/ml



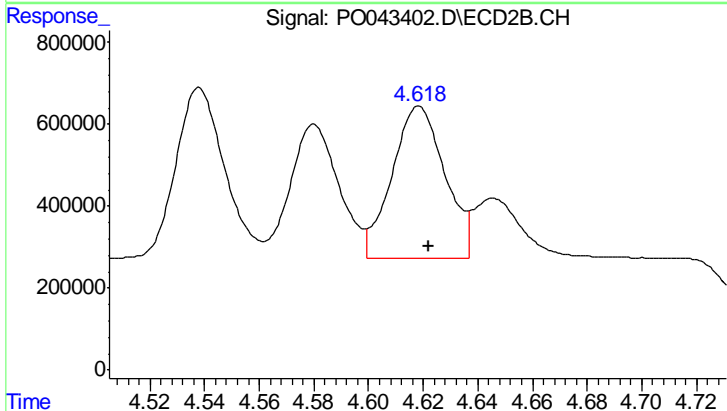
#5 AR-1016-3

R.T.: 5.380 min  
 Delta R.T.: 0.003 min  
 Response: 3305671  
 Conc: 475.41 ng/ml

Instrument :  
 ECD\_O  
 ClientSampled :  
 AR1660CCC500

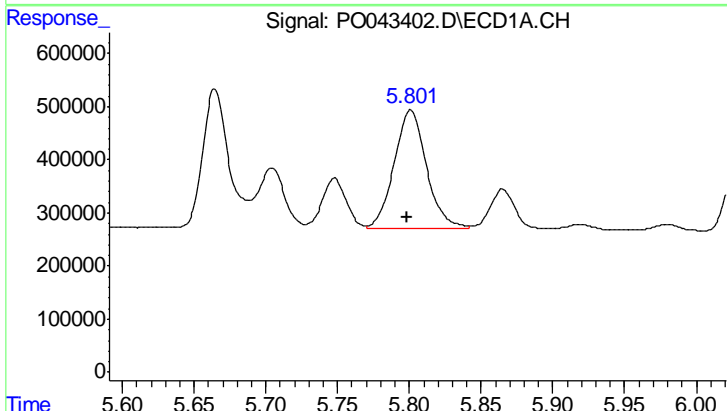
Manual Integrations  
 APPROVED

UGO  
 4/2/2018 1:03:25 PM



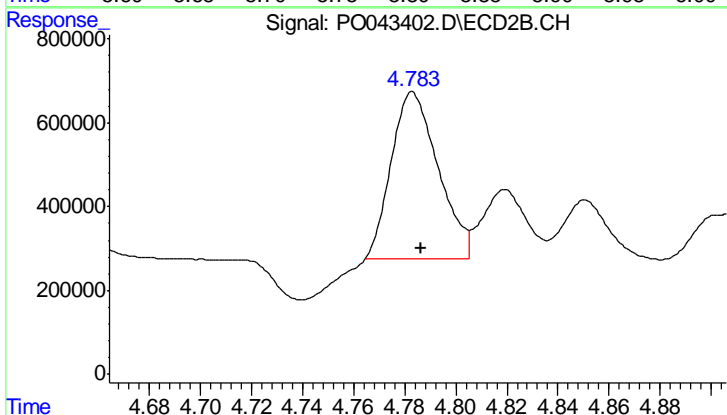
#5 AR-1016-3

R.T.: 4.618 min  
 Delta R.T.: -0.004 min  
 Response: 4985062  
 Conc: 556.26 ng/ml



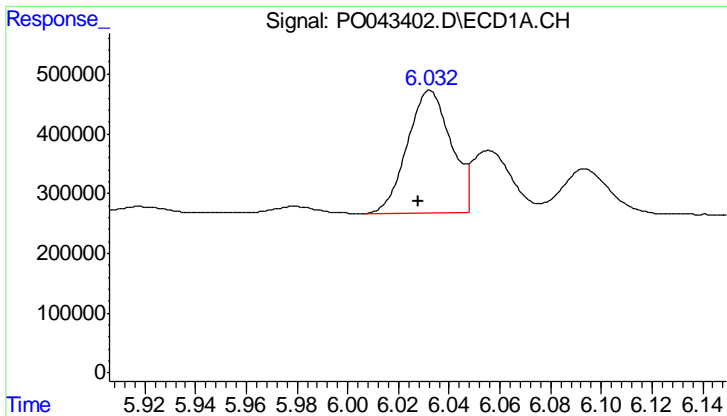
#6 AR-1016-4

R.T.: 5.801 min  
 Delta R.T.: 0.003 min  
 Response: 3531713  
 Conc: 495.25 ng/ml



#6 AR-1016-4

R.T.: 4.783 min  
 Delta R.T.: -0.004 min  
 Response: 5063056  
 Conc: 522.04 ng/ml m



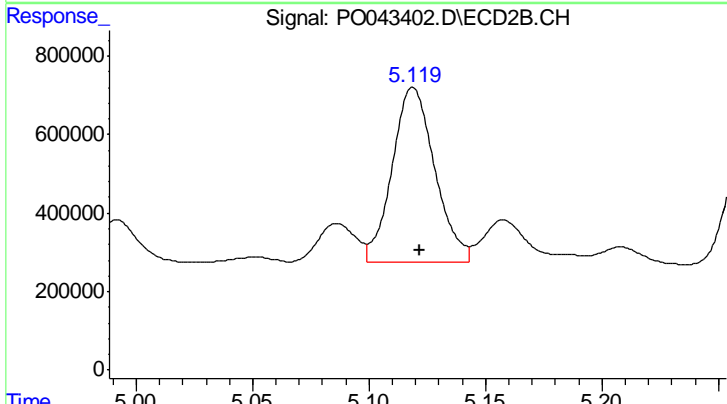
#7 AR-1016-5

R.T.: 6.032 min  
 Delta R.T.: 0.004 min  
 Response: 2514937  
 Conc: 382.25 ng/ml

Instrument :  
 ECD\_O  
 ClientSampled :  
 AR1660CCC500

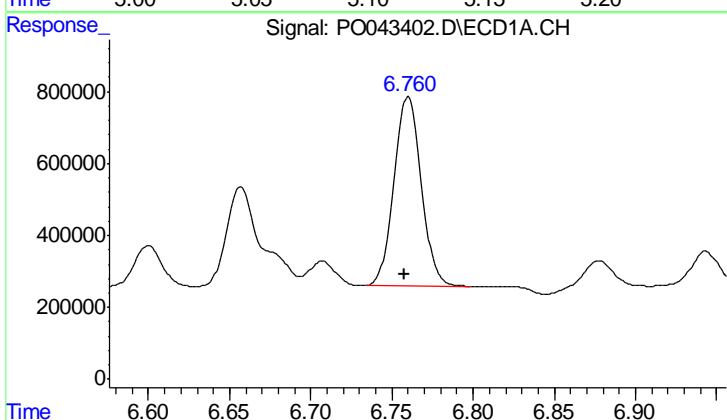
Manual Integrations  
 APPROVED

UGO  
 4/2/2018 1:03:25 PM



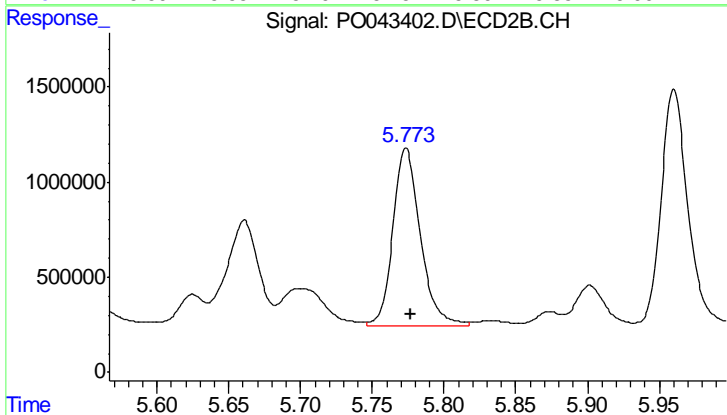
#7 AR-1016-5

R.T.: 5.119 min  
 Delta R.T.: -0.003 min  
 Response: 5660856  
 Conc: 558.01 ng/ml m



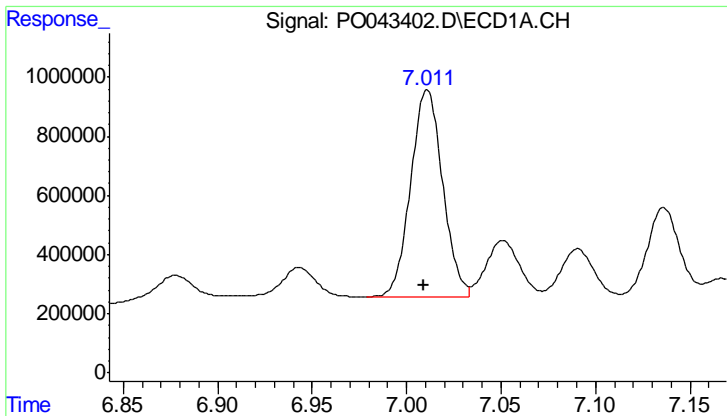
#31 AR-1260-1

R.T.: 6.760 min  
 Delta R.T.: 0.002 min  
 Response: 6163505  
 Conc: 438.55 ng/ml m



#31 AR-1260-1

R.T.: 5.773 min  
 Delta R.T.: -0.003 min  
 Response: 12422834  
 Conc: 554.39 ng/ml



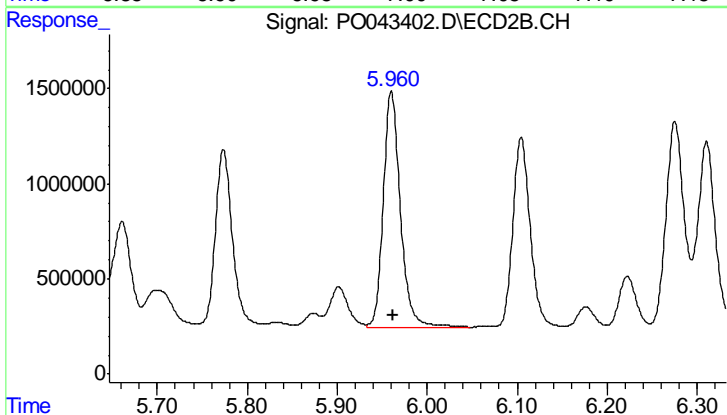
#32 AR-1260-2

R.T.: 7.011 min  
 Delta R.T.: 0.002 min  
 Response: 8266865  
 Conc: 455.26 ng/ml

Instrument :  
 ECD\_O  
 ClientSampled :  
 AR1660CCC500

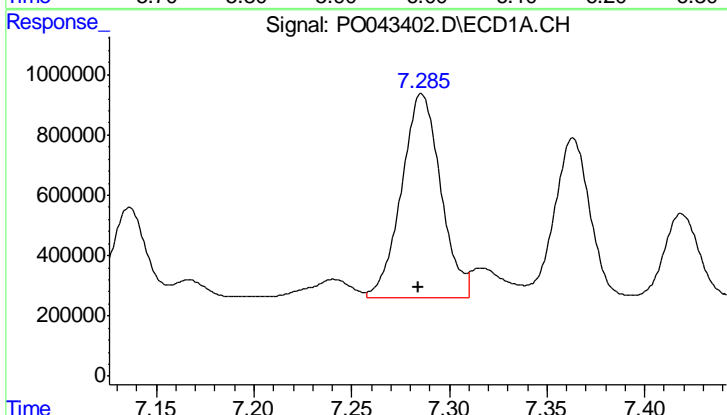
Manual Integrations  
 APPROVED

UGO  
 4/2/2018 1:03:25 PM



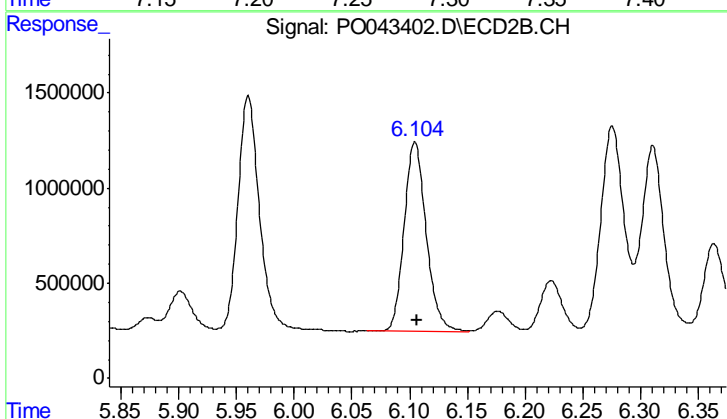
#32 AR-1260-2

R.T.: 5.960 min  
 Delta R.T.: -0.002 min  
 Response: 16307876  
 Conc: 504.58 ng/ml



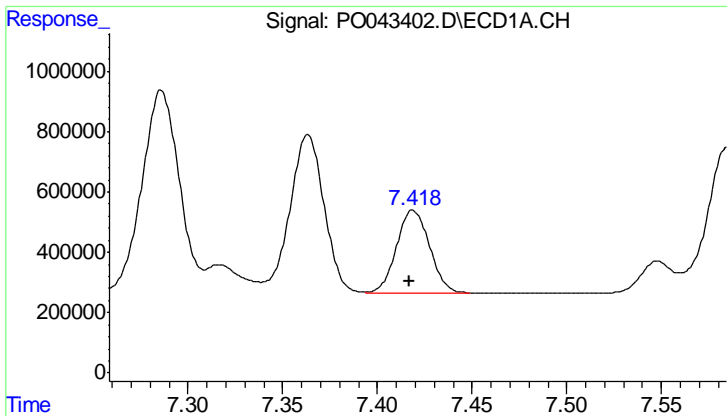
#33 AR-1260-3

R.T.: 7.285 min  
 Delta R.T.: 0.000 min  
 Response: 9553832  
 Conc: 470.08 ng/ml m



#33 AR-1260-3

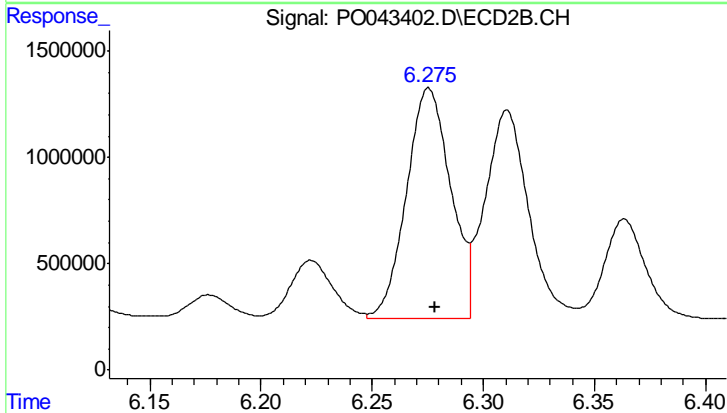
R.T.: 6.105 min  
 Delta R.T.: -0.002 min  
 Response: 13327029  
 Conc: 507.85 ng/ml



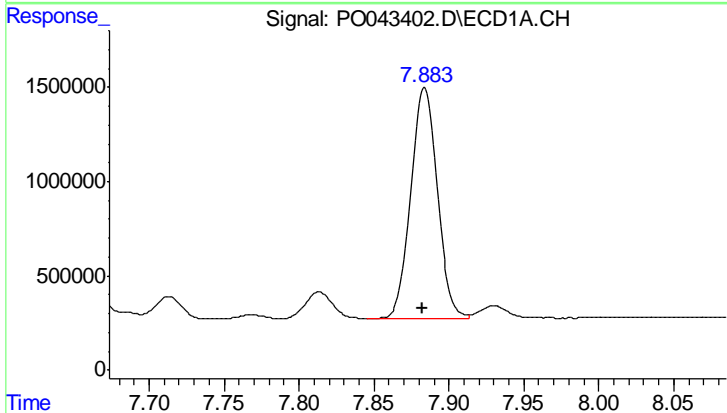
#34 AR-1260-4  
 R.T.: 7.418 min  
 Delta R.T.: 0.001 min  
 Response: 3308452  
 Conc: 451.29 ng/ml

**Instrument :**  
 ECD\_O  
**ClientSampled :**  
 AR1660CCC500

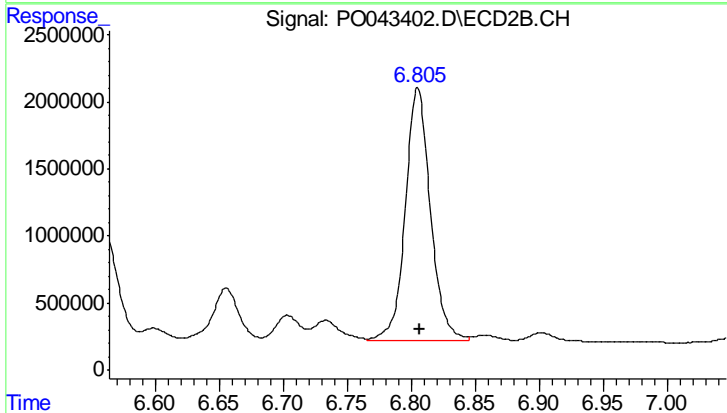
**Manual Integrations**  
**APPROVED**  
 UGO  
 4/2/2018 1:03:25 PM



#34 AR-1260-4  
 R.T.: 6.275 min  
 Delta R.T.: -0.003 min  
 Response: 15079846  
 Conc: 491.47 ng/ml



#35 AR-1260-5  
 R.T.: 7.884 min  
 Delta R.T.: 0.002 min  
 Response: 14985288  
 Conc: 492.00 ng/ml



#35 AR-1260-5  
 R.T.: 6.805 min  
 Delta R.T.: -0.002 min  
 Response: 25809726  
 Conc: 443.39 ng/ml