

Data Path : Z:\pestpcbsrv\HPCHEM1\ECD_0\Data\P0040219\
 Data File : P0054828.D
 Signal(s) : Signal #1: ECD1A.CH Signal #2: ECD2B.CH
 Acq On : 02 Apr 2019 18:48
 Operator : SM/SJ
 Sample : K2177-01
 Misc :
 ALS Vial : 10 Sample Multiplier: 1

Instrument :
 ECD_0
 ClientSampleId :
 032819-LIFT-E-D-B

Integration File signal 1: autoint1.e
 Integration File signal 2: autoint2.e
 Quant Time: Apr 03 01:12:58 2019
 Quant Method : Z:\pestpcbsrv\HPCHEM1\ECD_0\methods\P0032519.M
 Quant Title : GC EXTRACTABLES
 QLast Update : Mon Mar 25 17:22:26 2019
 Response via : Initial Calibration
 Integrator: ChemStation 6890 Scale Mode: Small noise peaks clipped

Volume Inj. : 2 µl
 Signal #1 Phase : ZB-MR1 Signal #2 Phase: ZB-MR2
 Signal #1 Info : 30Mx0.32mmx 0.50µ Signal #2 Info : 30M x 0.32mm x 0.25µm

Compound	RT#1	RT#2	Resp#1	Resp#2	ng/ml	ng/ml

System Monitoring Compounds						
1) SA Tetrachlo...	4.301	3.616	634066	571718	18.270	17.915
2) SA Decachlor...	9.920	8.591	644933	462897	13.082	14.534

Target Compounds

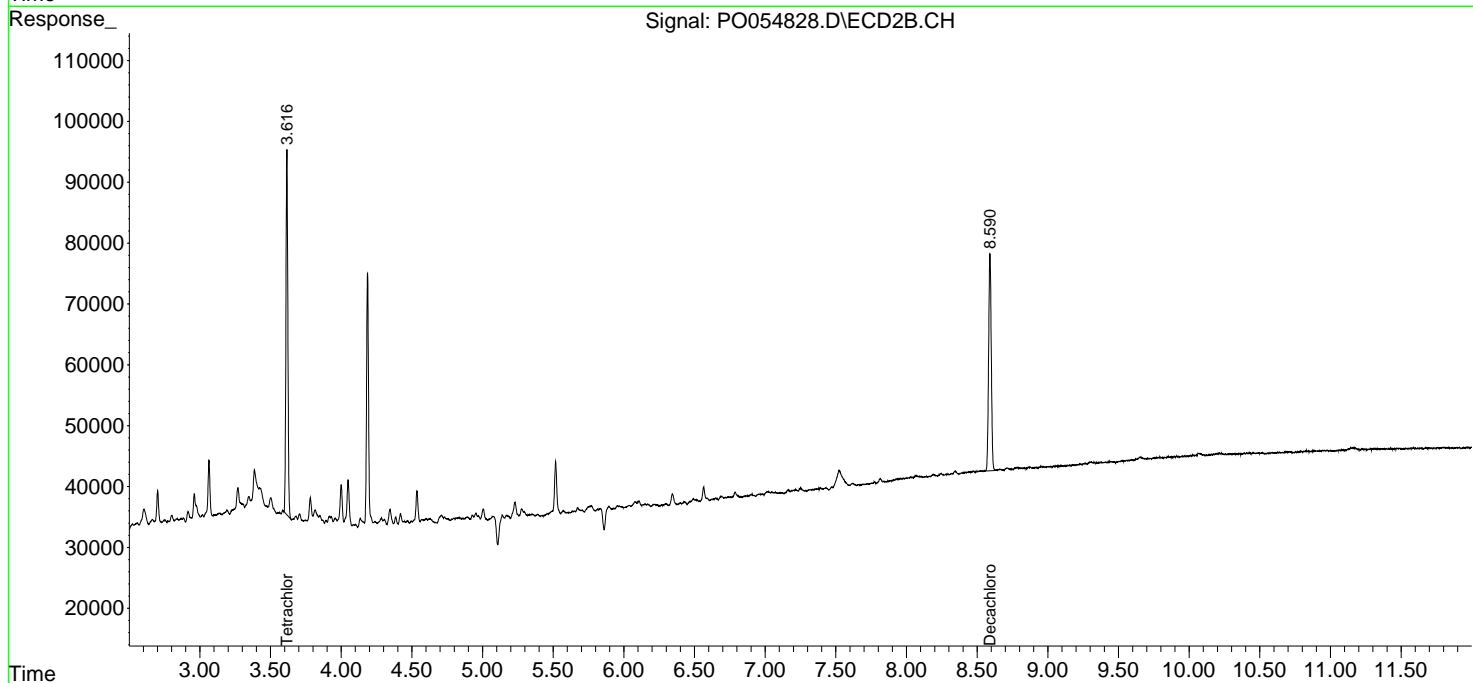
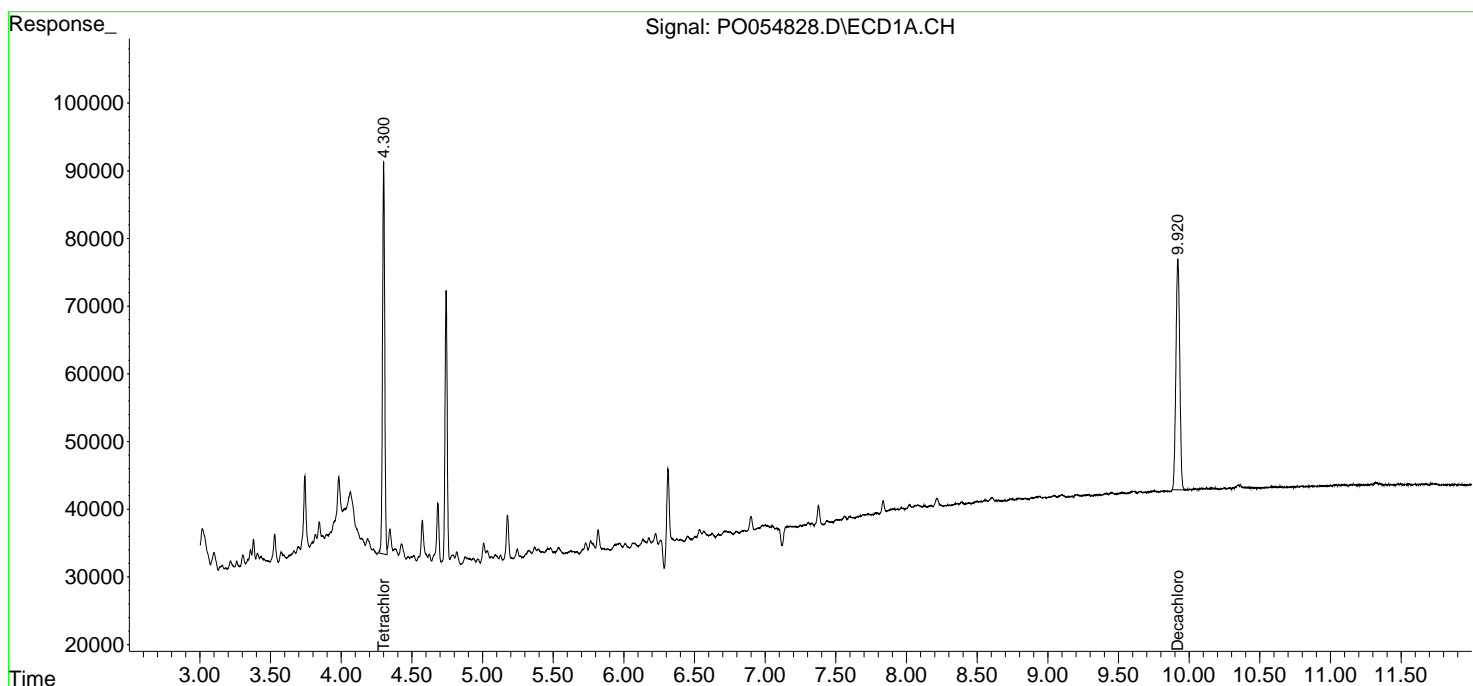
(f)=RT Delta > 1/2 Window (#)=Amounts differ by > 25% (m)=manual int.

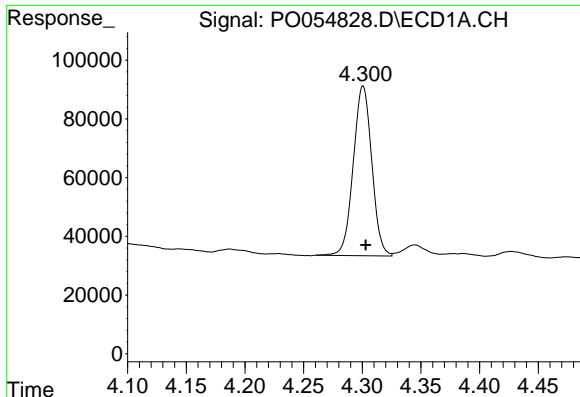
Data Path : Z:\pestpcbsrv\HPCHEM1\ECD_0\Data\PO040219\
 Data File : PO054828.D
 Signal(s) : Signal #1: ECD1A.CH Signal #2: ECD2B.CH
 Acq On : 02 Apr 2019 18:48
 Operator : SM/SJ
 Sample : K2177-01
 Misc :
 ALS Vial : 10 Sample Multiplier: 1

Instrument :
 ECD_O
 ClientSampleId :
 032819-LIFT-E-D-B

Integration File signal 1: autoint1.e
 Integration File signal 2: autoint2.e
 Quant Time: Apr 03 01:12:58 2019
 Quant Method : Z:\pestpcbsrv\HPCHEM1\ECD_0\methods\PO032519.M
 Quant Title : GC EXTRACTABLES
 QLast Update : Mon Mar 25 17:22:26 2019
 Response via : Initial Calibration
 Integrator: ChemStation 6890 Scale Mode: Small noise peaks clipped

Volume Inj. : 2 µl
 Signal #1 Phase : ZB-MR1 Signal #2 Phase: ZB-MR2
 Signal #1 Info : 30Mx0.32mmx 0.50µ Signal #2 Info : 30M x 0.32mm x 0.25µm

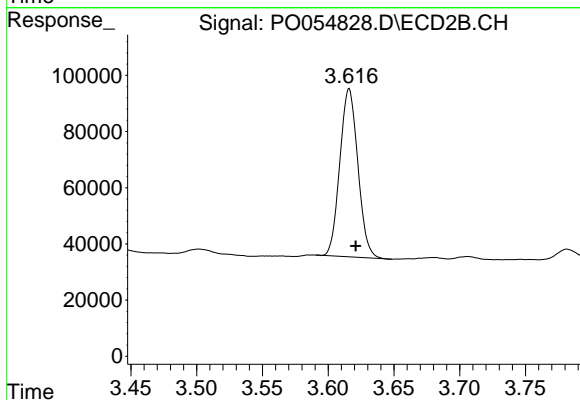




#1 Tetrachloro-m-xylene

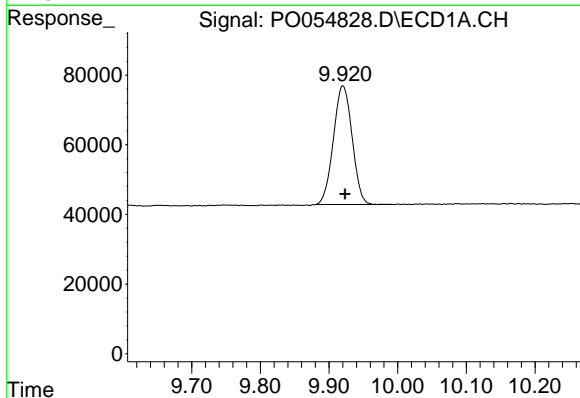
R.T.: 4.301 min
 Delta R.T.: -0.002 min
 Response: 634066
 Conc: 18.27 ng/ml

Instrument :
 ECD_O
 ClientSampleId :
 032819-LIFT-E-D-B



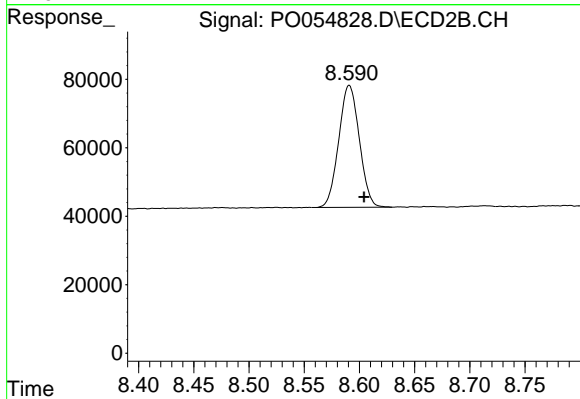
#1 Tetrachloro-m-xylene

R.T.: 3.616 min
 Delta R.T.: -0.005 min
 Response: 571718
 Conc: 17.92 ng/ml



#2 Decachlorobiphenyl

R.T.: 9.920 min
 Delta R.T.: -0.003 min
 Response: 644933
 Conc: 13.08 ng/ml



#2 Decachlorobiphenyl

R.T.: 8.591 min
 Delta R.T.: -0.013 min
 Response: 462897
 Conc: 14.53 ng/ml