

Data Path : Z:\pestpcbsrv\HPCHEM1\ECD_0\Data\P0040220\
 Data File : P0067620.D
 Signal(s) : Signal #1: ECD1A.CH Signal #2: ECD2B.CH
 Acq On : 02 Apr 2020 14:50
 Operator : DD\AJ
 Sample : L2087-07
 Misc :
 ALS Vial : 23 Sample Multiplier: 1

Instrument :
 ECD_0
 ClientSampled :
 DUP-15

Integration File signal 1: autoint1.e
 Integration File signal 2: autoint2.e
 Quant Time: Apr 02 15:39:50 2020
 Quant Method : Z:\pestpcbsrv\HPCHEM1\ECD_0\methods\P0040120.M
 Quant Title : GC EXTRACTABLES
 QLast Update : Wed Apr 01 17:26:29 2020
 Response via : Initial Calibration
 Integrator: ChemStation 6890 Scale Mode: Small noise peaks clipped

Volume Inj. : 2 µl
 Signal #1 Phase : ZB-MR1 Signal #2 Phase: ZB-MR2
 Signal #1 Info : 30Mx0.32mmx 0.50µ Signal #2 Info : 30M x 0.32mm x 0.25µm

Compound	RT#1	RT#2	Resp#1	Resp#2	ng/ml	ng/ml
System Monitoring Compounds						
1) SA Tetrachlo...	4.935	3.943	462922	665677	19.439	19.861
2) SA Decachlor...	10.921	9.231	666628	437983	19.582	10.593 #
Target Compounds						
3) L1 AR-1016-1	6.271	5.216	25077	57393	24.318	39.151 #
4) L1 AR-1016-2	6.271	5.216	25077	57393	17.773	29.297 #
5) L1 AR-1016-3	6.334	5.404	16040	41602	18.248	39.777 #
6) L1 AR-1016-4	0.000	5.465	0	19442	N.D.	21.794 #
7) L1 AR-1016-5	6.721	5.695	116489	28136	162.006	24.863 #
8) L2 AR-1221-1	0.000	4.191	0	22888	N.D.	51.508 #
10) L2 AR-1221-3	5.390	4.440	32199	91108	42.857	92.802 #
11) L3 AR-1232-1	5.390	4.440	32199	91108	62.538	131.646 #
12) L3 AR-1232-2	0.000	5.216	0	57393	N.D.	79.122 #
13) L3 AR-1232-3	6.271	5.404	25077	41602	47.842	107.927 #
14) L3 AR-1232-4	0.000	5.524	0	36958	N.D.	104.469 #
15) L3 AR-1232-5	0.000	5.695	0	28136	N.D.	73.627 #
16) L4 AR-1242-1	6.271	5.216	25077	57393	36.526	58.495 #
17) L4 AR-1242-2	6.271	5.216	25077	57393	26.690	44.046 #
18) L4 AR-1242-3	6.334	5.404	16040	41602	27.370	58.178 #
19) L4 AR-1242-4	0.000	5.524	0	36958	N.D.	51.344 #
20) L4 AR-1242-5	7.258	6.073	375964	408714	703.761	436.782 #
21) L5 AR-1248-1	6.271	5.216	25077	57393	46.741	73.466 #
22) L5 AR-1248-2	0.000	5.465	0	19442	N.D.	19.322 #
23) L5 AR-1248-3	6.721	5.524	116489	36958	143.131	36.133 #
24) L5 AR-1248-4	7.200	5.695	308023	28136	326.483	22.576 #
25) L5 AR-1248-5	7.258	6.118	375964	92239	417.182	74.538 #
26) L6 AR-1254-1	7.177	6.073	149293	408714	152.169	210.710 #
27) L6 AR-1254-2	7.403	6.220	216573	142305	139.993	81.686 #
28) L6 AR-1254-3	7.779	6.649	327703	297912	200.439	107.538 #
29) L6 AR-1254-4	8.066	6.894	91818	179367	71.640	98.150 #
30) L6 AR-1254-5	8.520	7.319	857602	965398	623.384	378.906 #
31) L7 AR-1260-1	7.941	6.787	252225	290297	186.635	138.472 #
32) L7 AR-1260-2	8.201	6.985	932214	177245	552.202	69.027 #
33) L7 AR-1260-3	8.567	7.138	270424	161813	207.462	67.291 #
34) L7 AR-1260-4	8.795	7.620	336512	252691	218.969	120.232 #
35) L7 AR-1260-5	9.121	7.868	296054	457367	93.848	90.344
36) L8 AR-1262-1	8.567	7.319	270424	965398	161.306	696.674 #
37) L8 AR-1262-2	9.121	7.868	296054	457367	103.173	100.035
38) L8 AR-1262-3	9.426	8.157	287275	848808	138.057	431.862 #
39) L8 AR-1262-4	9.524	8.221	272736	575150	172.360	167.781
40) L8 AR-1262-5	10.181	8.714	69596	158881	59.026	93.468 #
41) L9 AR-1268-1	9.426	8.157	287275	848808	77.744	157.752 #
42) L9 AR-1268-2	9.524	8.221	272736	575150	78.690	116.486 #

Data Path : Z:\pestpcbsrv\HPCHEM1\ECD_0\Data\P0040220\
 Data File : P0067620.D
 Signal(s) : Signal #1: ECD1A.CH Signal #2: ECD2B.CH
 Acq On : 02 Apr 2020 14:50
 Operator : DD\AJ
 Sample : L2087-07
 Misc :
 ALS Vial : 23 Sample Multiplier: 1

Instrument :
 ECD_0
 ClientSampleId :
 DUP-15

Integration File signal 1: autoint1.e
 Integration File signal 2: autoint2.e
 Quant Time: Apr 02 15:39:50 2020
 Quant Method : Z:\pestpcbsrv\HPCHEM1\ECD_0\methods\P0040120.M
 Quant Title : GC EXTRACTABLES
 QLast Update : Wed Apr 01 17:26:29 2020
 Response via : Initial Calibration
 Integrator: ChemStation 6890 Scale Mode: Small noise peaks clipped

Volume Inj. : 2 µl
 Signal #1 Phase : ZB-MR1 Signal #2 Phase: ZB-MR2
 Signal #1 Info : 30Mx0.32mmx 0.50µ Signal #2 Info : 30M x 0.32mm x 0.25µm

	Compound	RT#1	RT#2	Resp#1	Resp#2	ng/ml	ng/ml
43)	L9 AR-1268-3	9.750	8.428	238561	81298	82.156	19.396 #
44)	L9 AR-1268-4	10.181	8.714	69596	158881	50.133	82.114 #
45)	L9 AR-1268-5	10.589	8.991	237763	255839	23.981	19.839

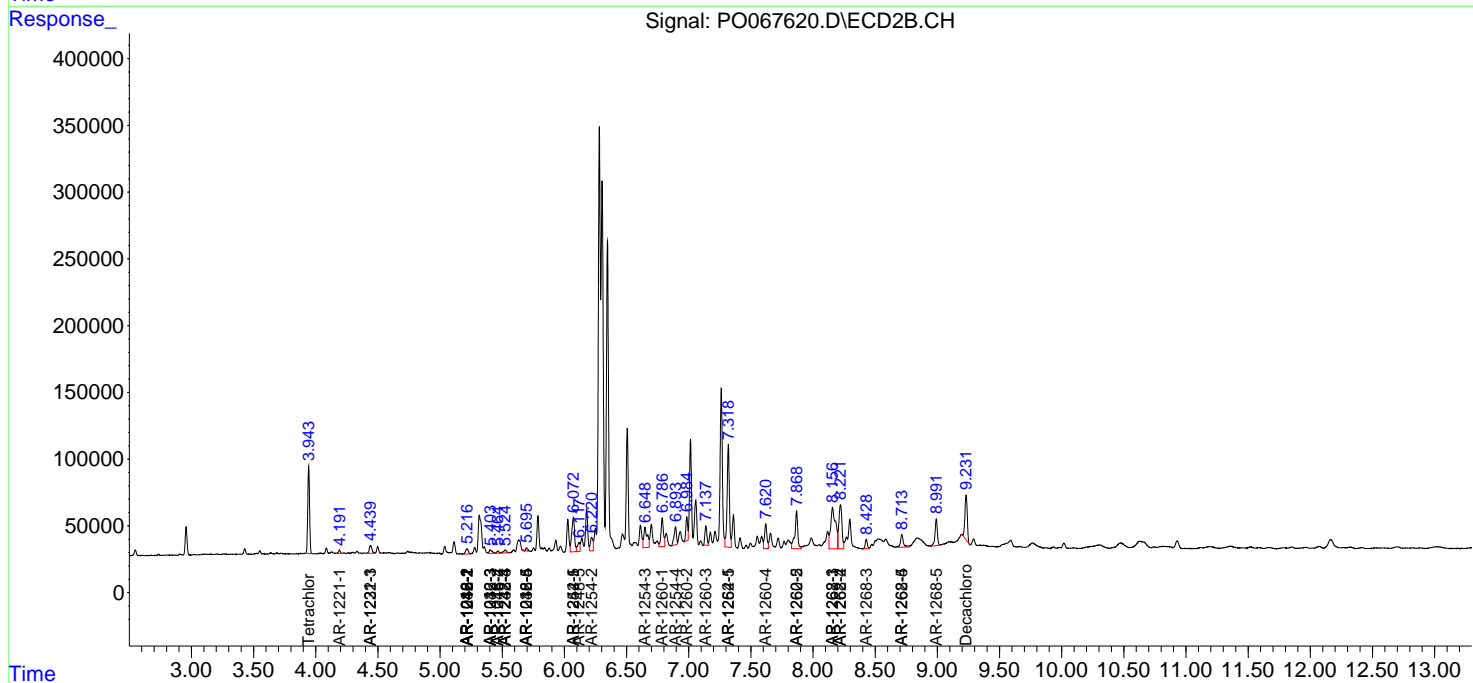
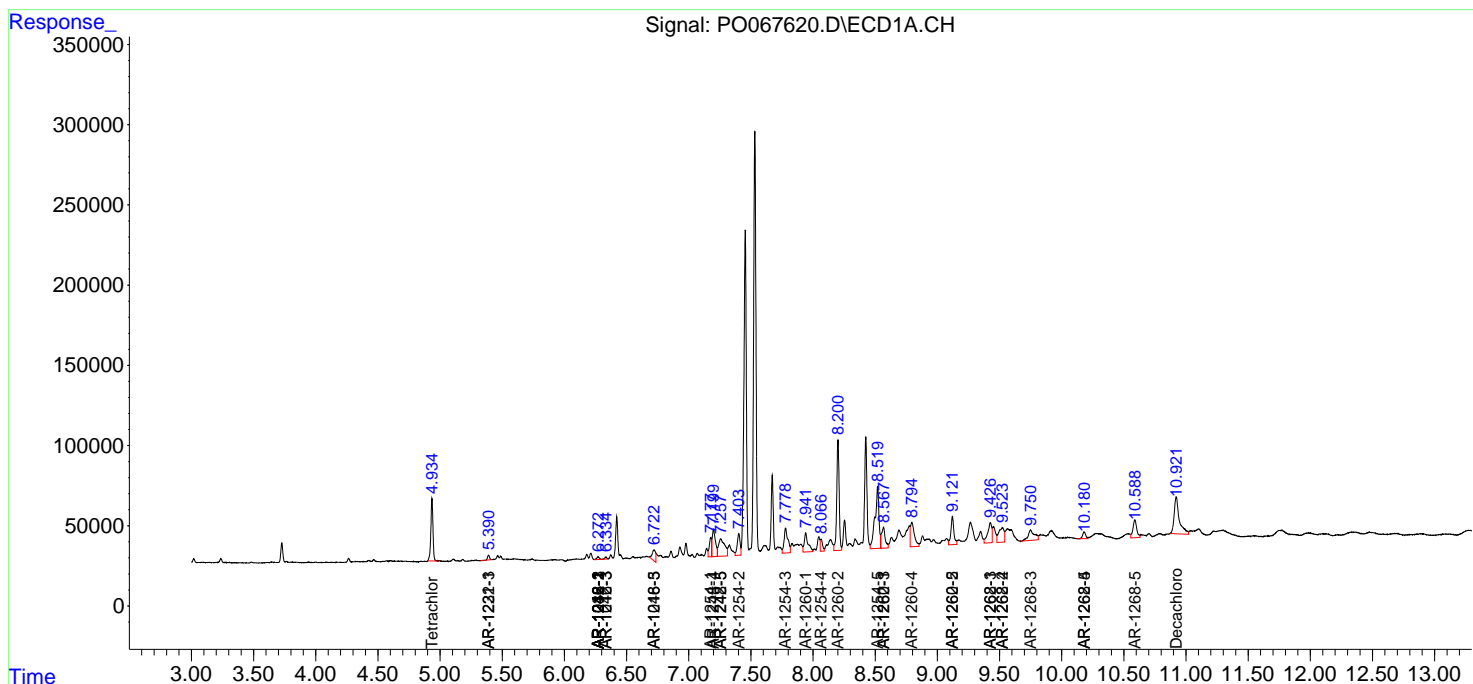
(f)=RT Delta > 1/2 Window (#)=Amounts differ by > 25% (m)=manual int.

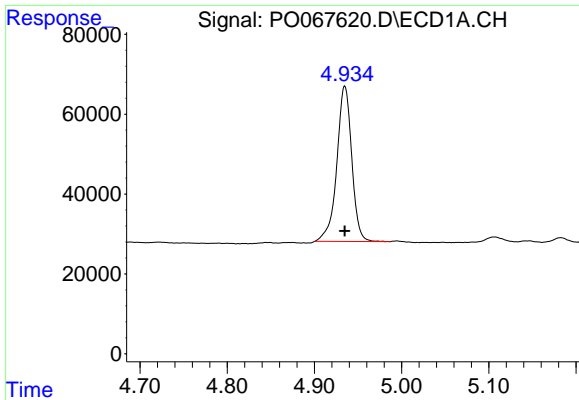
Data Path : Z:\pestpcbsrv\HPCHEM1\ECD_0\Data\P0040220\
 Data File : P0067620.D
 Signal(s) : Signal #1: ECD1A.CH Signal #2: ECD2B.CH
 Acq On : 02 Apr 2020 14:50
 Operator : DD\AJ
 Sample : L2087-07
 Misc :
 ALS Vial : 23 Sample Multiplier: 1

Instrument :
 ECD_O
 ClientSampled :
 DUP-15

Integration File signal 1: autoint1.e
 Integration File signal 2: autoint2.e
 Quant Time: Apr 02 15:39:50 2020
 Quant Method : Z:\pestpcbsrv\HPCHEM1\ECD_0\methods\P0040120.M
 Quant Title : GC EXTRACTABLES
 QLast Update : Wed Apr 01 17:26:29 2020
 Response via : Initial Calibration
 Integrator: ChemStation 6890 Scale Mode: Small noise peaks clipped

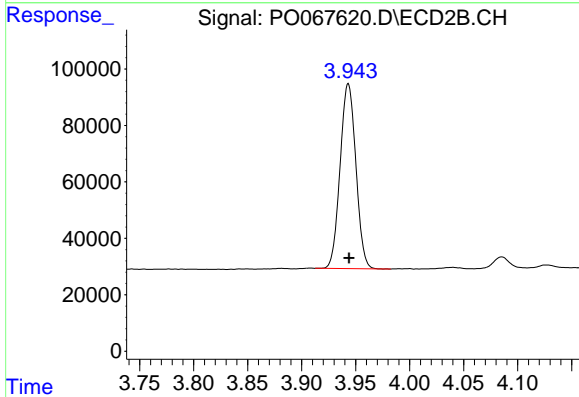
Volume Inj. : 2 µl
 Signal #1 Phase : ZB-MR1 Signal #2 Phase: ZB-MR2
 Signal #1 Info : 30Mx0.32mmx 0.50µ Signal #2 Info : 30M x 0.32mm x 0.25µm



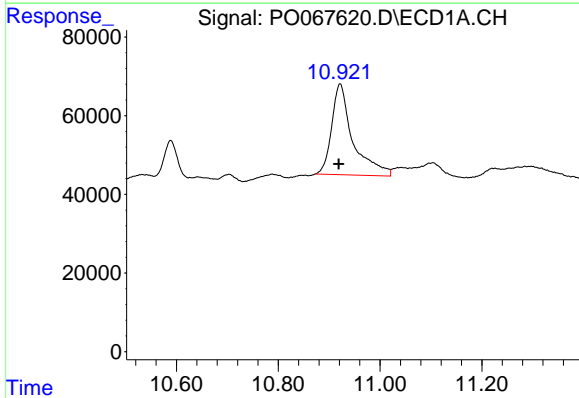


#1 Tetrachloro-m-xylene
 R.T.: 4.935 min
 Delta R.T.: 0.000 min
 Response: 462922
 Conc: 19.44 ng/ml

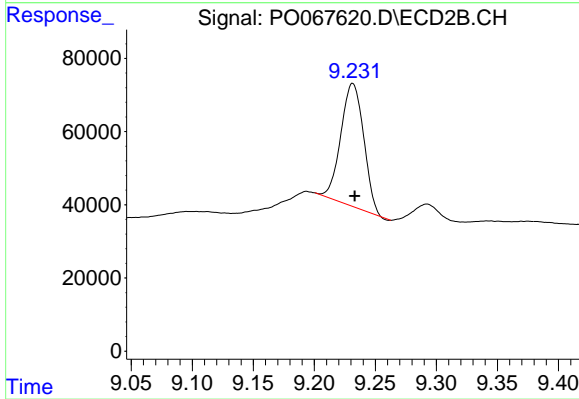
Instrument :
 ECD_O
 ClientSampled :
 DUP-15



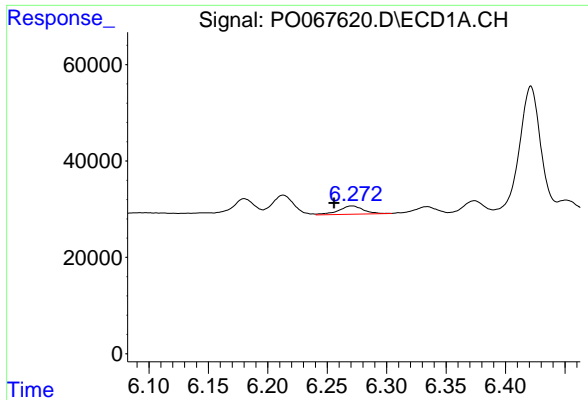
#1 Tetrachloro-m-xylene
 R.T.: 3.943 min
 Delta R.T.: 0.000 min
 Response: 665677
 Conc: 19.86 ng/ml



#2 Decachlorobiphenyl
 R.T.: 10.921 min
 Delta R.T.: 0.003 min
 Response: 666628
 Conc: 19.58 ng/ml

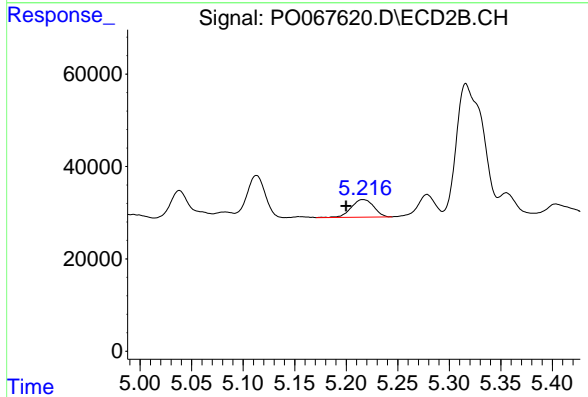


#2 Decachlorobiphenyl
 R.T.: 9.231 min
 Delta R.T.: -0.002 min
 Response: 437983
 Conc: 10.59 ng/ml

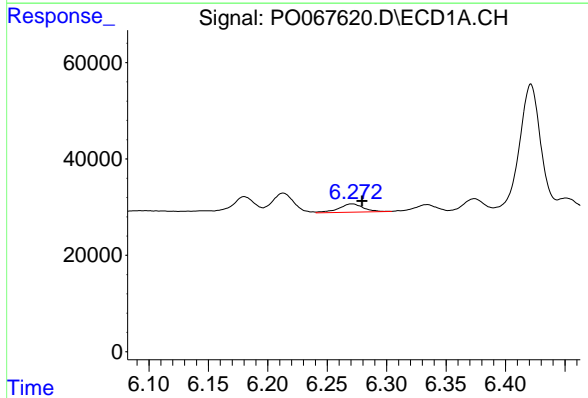


#3 AR-1016-1
 R.T.: 6.271 min
 Delta R.T.: 0.015 min
 Response: 25077
 Conc: 24.32 ng/ml

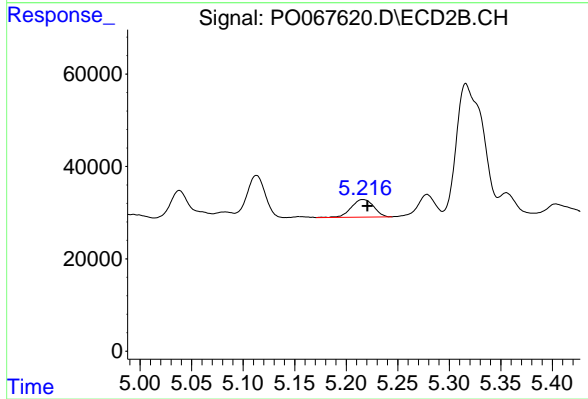
Instrument :
 ECD_O
 ClientSampled :
 DUP-15



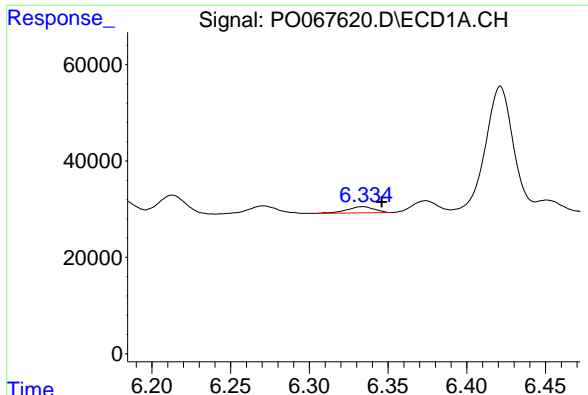
#3 AR-1016-1
 R.T.: 5.216 min
 Delta R.T.: 0.016 min
 Response: 57393
 Conc: 39.15 ng/ml



#4 AR-1016-2
 R.T.: 6.271 min
 Delta R.T.: -0.008 min
 Response: 25077
 Conc: 17.77 ng/ml

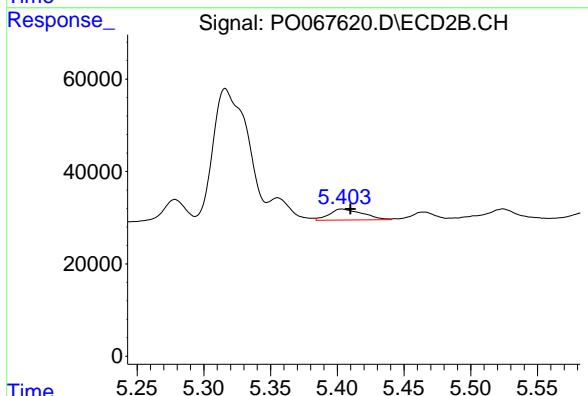


#4 AR-1016-2
 R.T.: 5.216 min
 Delta R.T.: -0.004 min
 Response: 57393
 Conc: 29.30 ng/ml

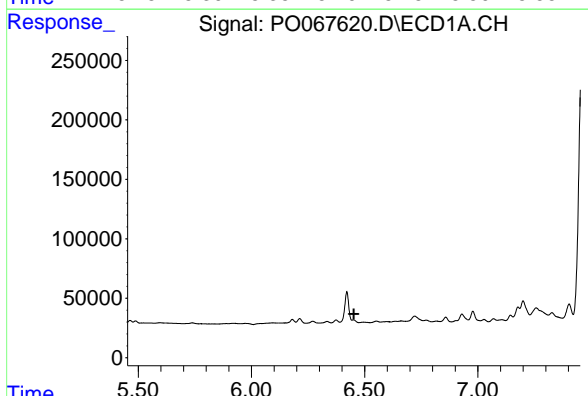


#5 AR-1016-3
 R.T.: 6.334 min
 Delta R.T.: -0.012 min
 Response: 16040
 Conc: 18.25 ng/ml

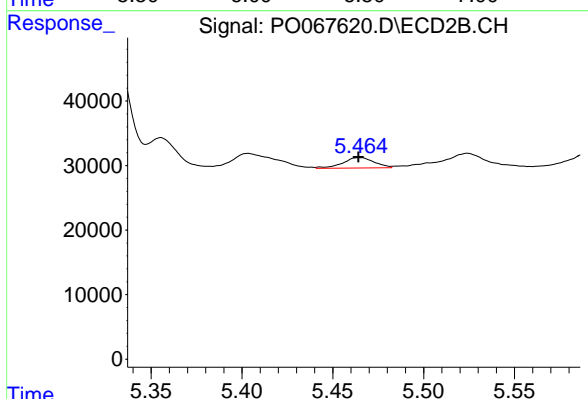
Instrument :
 ECD_O
 ClientSampled :
 DUP-15



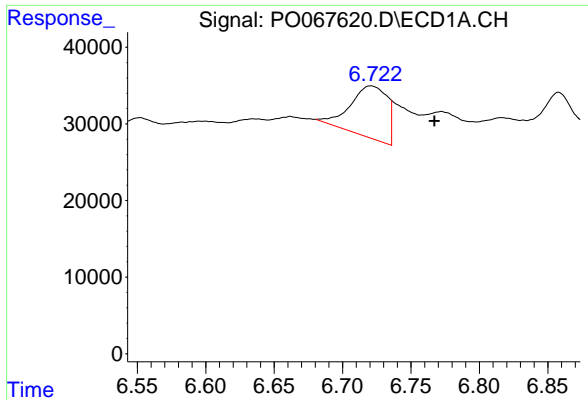
#5 AR-1016-3
 R.T.: 5.404 min
 Delta R.T.: -0.006 min
 Response: 41602
 Conc: 39.78 ng/ml



#6 AR-1016-4
 R.T.: 0.000 min
 Exp R.T. : 6.452 min
 Response: 0
 Conc: N.D.

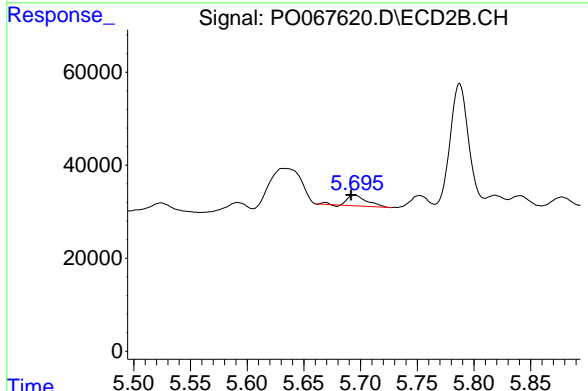


#6 AR-1016-4
 R.T.: 5.465 min
 Delta R.T.: 0.000 min
 Response: 19442
 Conc: 21.79 ng/ml

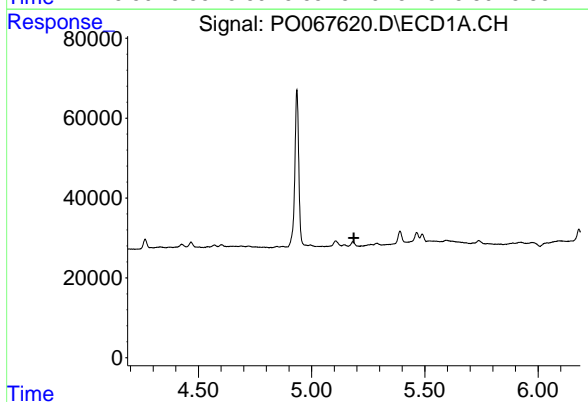


#7 AR-1016-5
 R.T.: 6.721 min
 Delta R.T.: -0.046 min
 Response: 116489
 Conc: 162.01 ng/ml

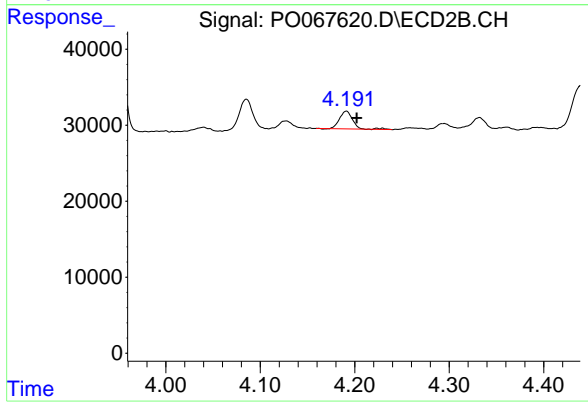
Instrument :
 ECD_O
 ClientSampled :
 DUP-15



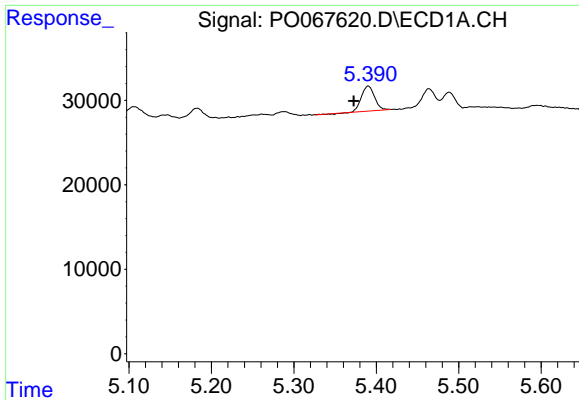
#7 AR-1016-5
 R.T.: 5.695 min
 Delta R.T.: 0.003 min
 Response: 28136
 Conc: 24.86 ng/ml



#8 AR-1221-1
 R.T.: 0.000 min
 Exp R.T. : 5.187 min
 Response: 0
 Conc: N.D.



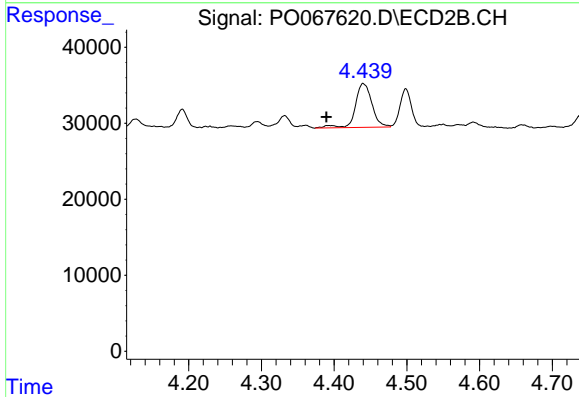
#8 AR-1221-1
 R.T.: 4.191 min
 Delta R.T.: -0.011 min
 Response: 22888
 Conc: 51.51 ng/ml



#10 AR-1221-3

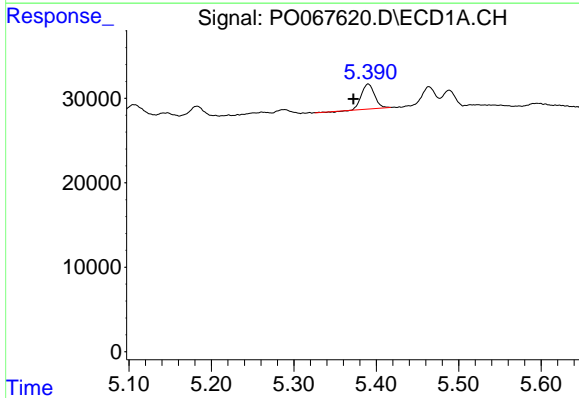
R.T.: 5.390 min
 Delta R.T.: 0.017 min
 Response: 32199
 Conc: 42.86 ng/ml

Instrument :
 ECD_O
ClientSampled :
 DUP-15



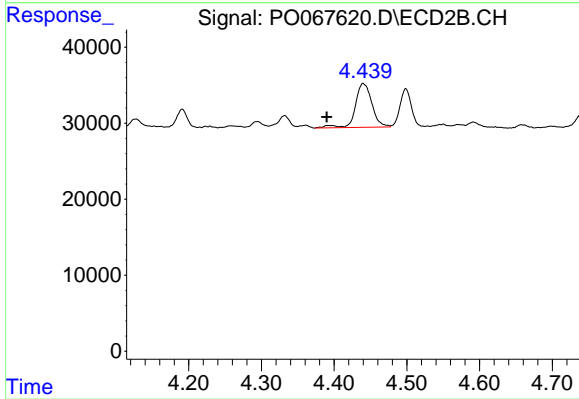
#10 AR-1221-3

R.T.: 4.440 min
 Delta R.T.: 0.051 min
 Response: 91108
 Conc: 92.80 ng/ml



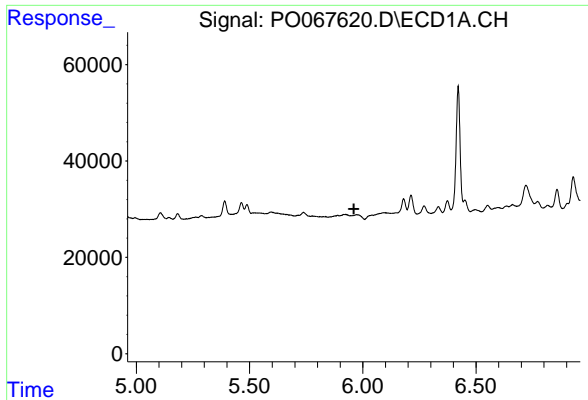
#11 AR-1232-1

R.T.: 5.390 min
 Delta R.T.: 0.018 min
 Response: 32199
 Conc: 62.54 ng/ml



#11 AR-1232-1

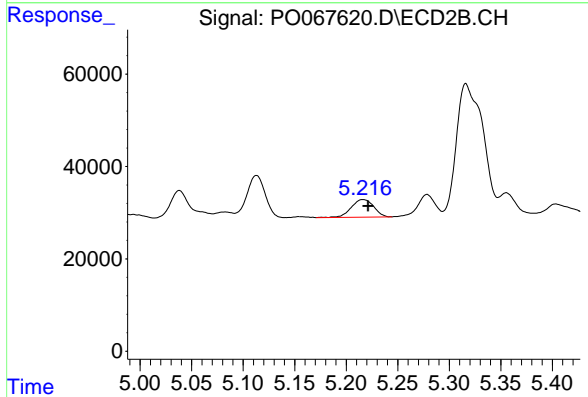
R.T.: 4.440 min
 Delta R.T.: 0.051 min
 Response: 91108
 Conc: 131.65 ng/ml



#12 AR-1232-2

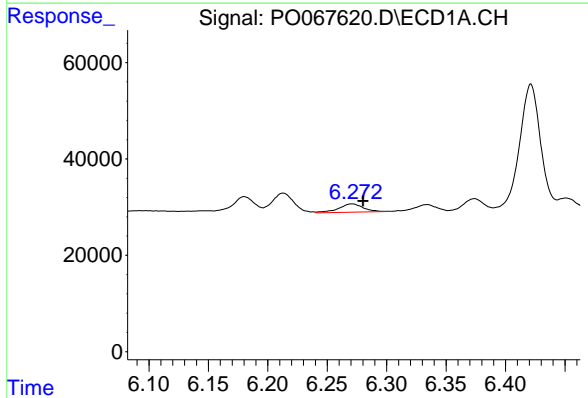
R.T.: 0.000 min
 Exp R.T.: 5.961 min
 Response: 0
 Conc: N.D.

Instrument :
 ECD_O
 ClientSampled :
 DUP-15



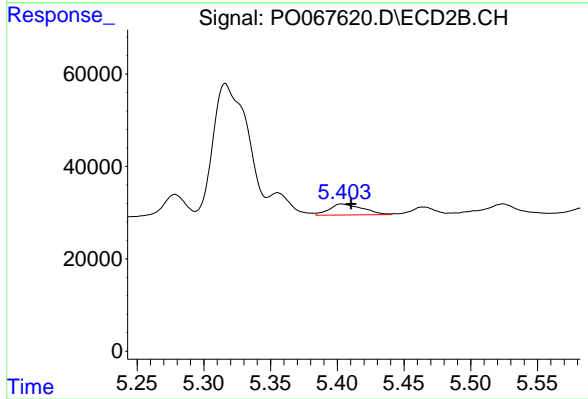
#12 AR-1232-2

R.T.: 5.216 min
 Delta R.T.: -0.005 min
 Response: 57393
 Conc: 79.12 ng/ml



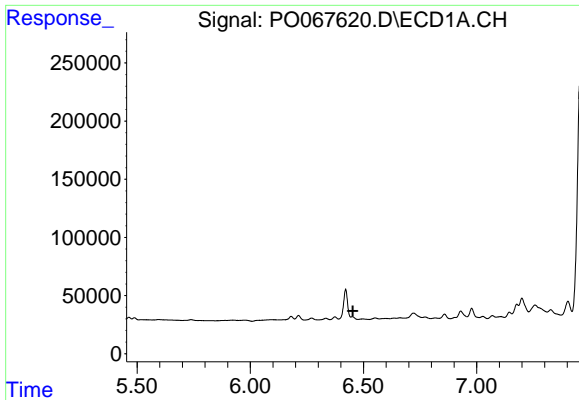
#13 AR-1232-3

R.T.: 6.271 min
 Delta R.T.: -0.009 min
 Response: 25077
 Conc: 47.84 ng/ml



#13 AR-1232-3

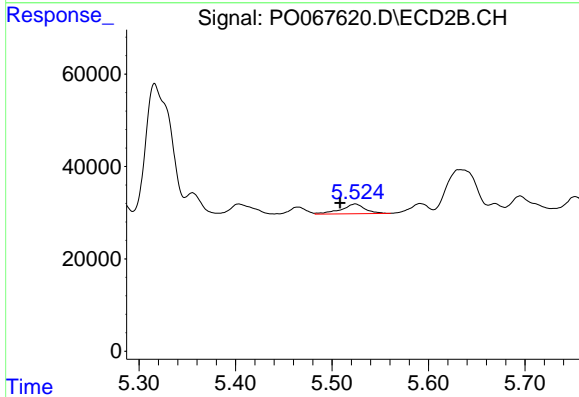
R.T.: 5.404 min
 Delta R.T.: -0.006 min
 Response: 41602
 Conc: 107.93 ng/ml



#14 AR-1232-4

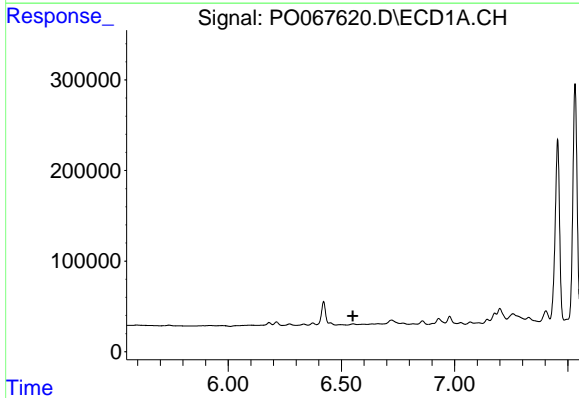
R.T.: 0.000 min
 Exp R.T. : 6.453 min
 Response: 0
 Conc: N.D.

Instrument :
 ECD_O
 ClientSampled :
 DUP-15



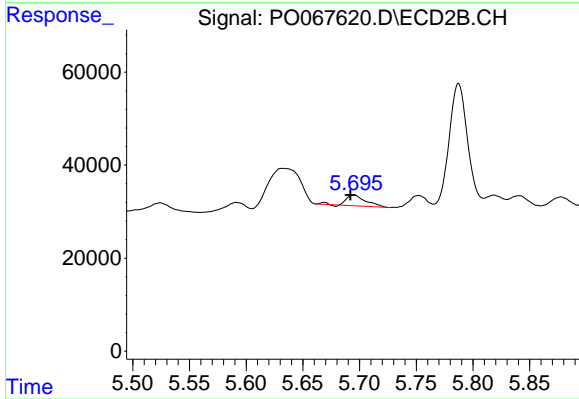
#14 AR-1232-4

R.T.: 5.524 min
 Delta R.T.: 0.015 min
 Response: 36958
 Conc: 104.47 ng/ml



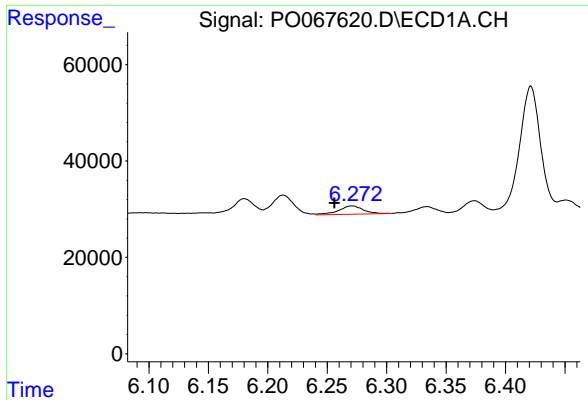
#15 AR-1232-5

R.T.: 0.000 min
 Exp R.T. : 6.550 min
 Response: 0
 Conc: N.D.



#15 AR-1232-5

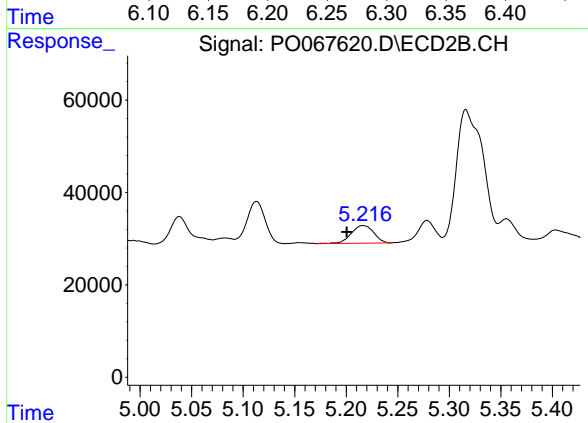
R.T.: 5.695 min
 Delta R.T.: 0.003 min
 Response: 28136
 Conc: 73.63 ng/ml



#16 AR-1242-1

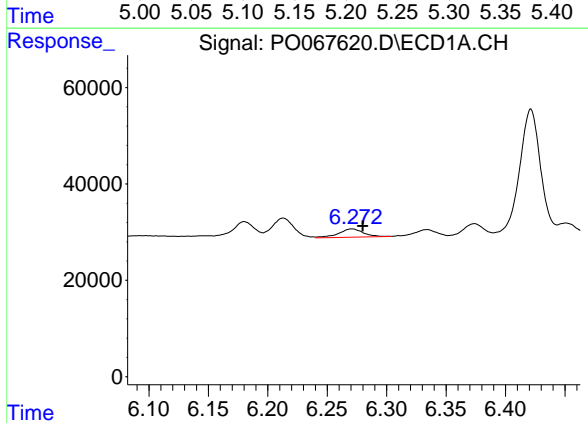
R.T.: 6.271 min
 Delta R.T.: 0.015 min
 Response: 25077
 Conc: 36.53 ng/ml

Instrument :
 ECD_O
 ClientSampleId :
 DUP-15



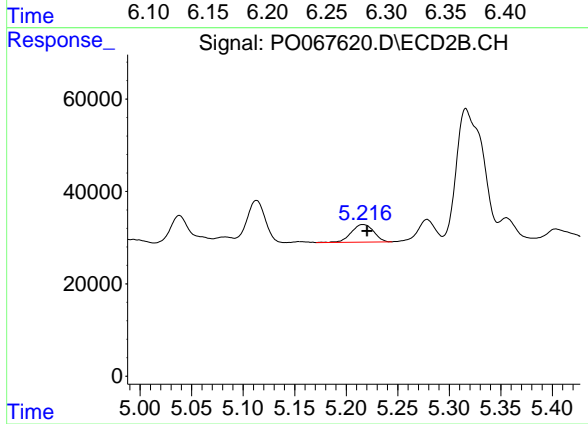
#16 AR-1242-1

R.T.: 5.216 min
 Delta R.T.: 0.016 min
 Response: 57393
 Conc: 58.49 ng/ml



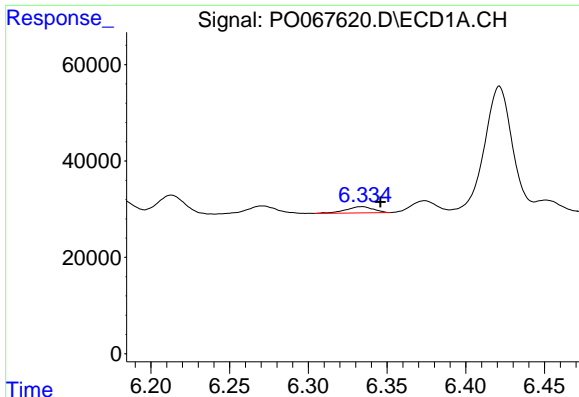
#17 AR-1242-2

R.T.: 6.271 min
 Delta R.T.: -0.009 min
 Response: 25077
 Conc: 26.69 ng/ml



#17 AR-1242-2

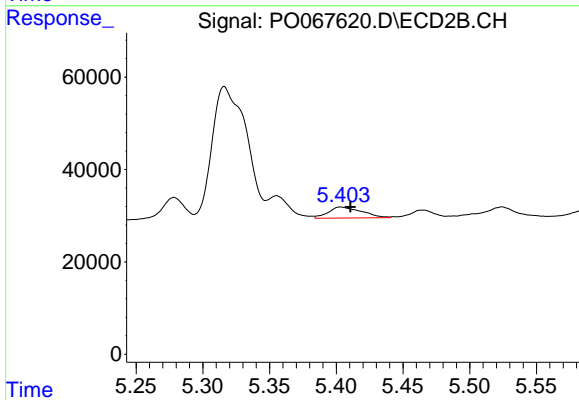
R.T.: 5.216 min
 Delta R.T.: -0.004 min
 Response: 57393
 Conc: 44.05 ng/ml



#18 AR-1242-3

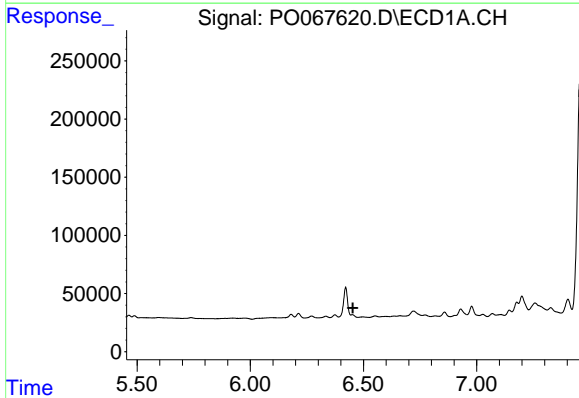
R.T.: 6.334 min
 Delta R.T.: -0.012 min
 Response: 16040
 Conc: 27.37 ng/ml

Instrument :
 ECD_O
 ClientSampled :
 DUP-15



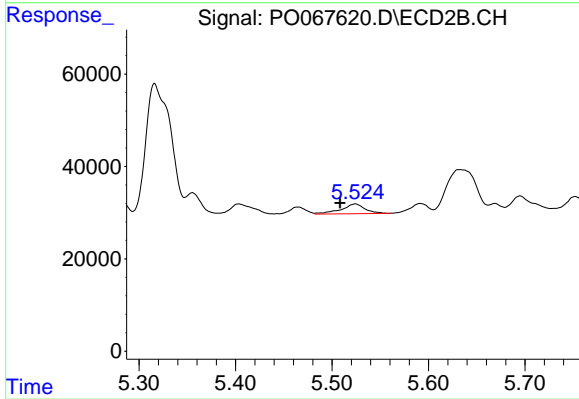
#18 AR-1242-3

R.T.: 5.404 min
 Delta R.T.: -0.007 min
 Response: 41602
 Conc: 58.18 ng/ml



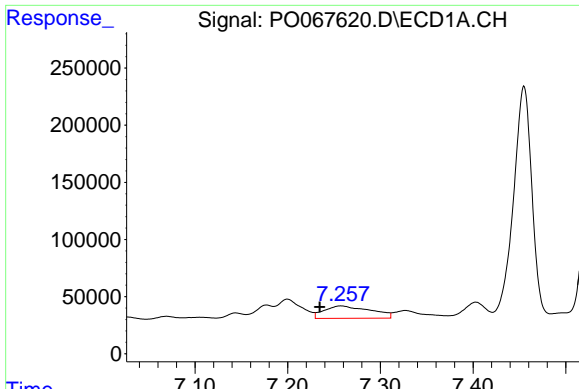
#19 AR-1242-4

R.T.: 0.000 min
 Exp R.T. : 6.453 min
 Response: 0
 Conc: N.D.



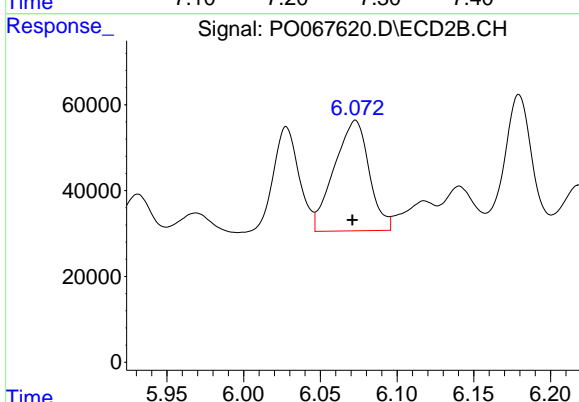
#19 AR-1242-4

R.T.: 5.524 min
 Delta R.T.: 0.016 min
 Response: 36958
 Conc: 51.34 ng/ml

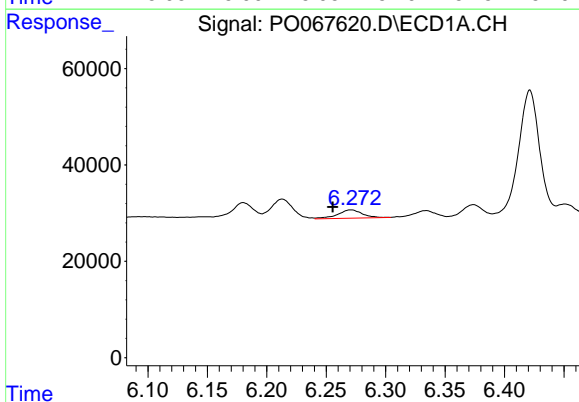


#20 AR-1242-5
 R.T.: 7.258 min
 Delta R.T.: 0.023 min
 Response: 375964
 Conc: 703.76 ng/ml

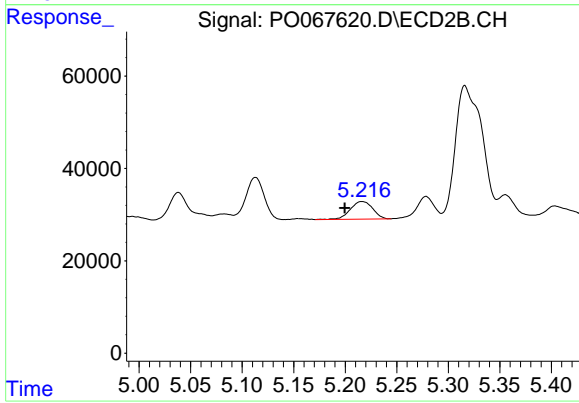
Instrument :
 ECD_O
 ClientSampled :
 DUP-15



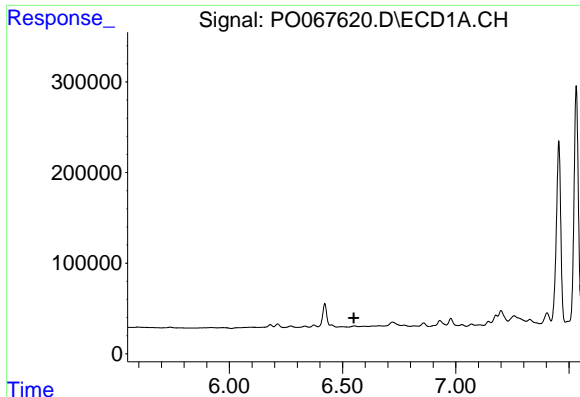
#20 AR-1242-5
 R.T.: 6.073 min
 Delta R.T.: 0.002 min
 Response: 408714
 Conc: 436.78 ng/ml



#21 AR-1248-1
 R.T.: 6.271 min
 Delta R.T.: 0.016 min
 Response: 25077
 Conc: 46.74 ng/ml



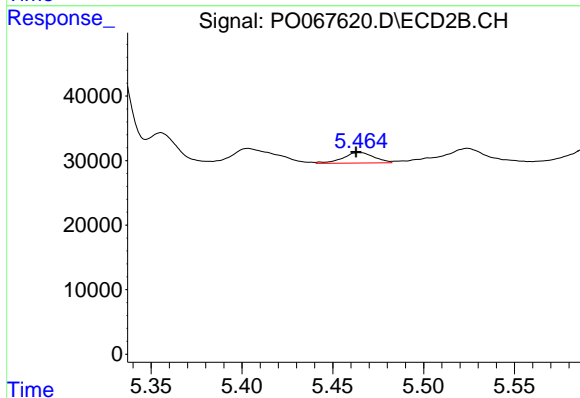
#21 AR-1248-1
 R.T.: 5.216 min
 Delta R.T.: 0.017 min
 Response: 57393
 Conc: 73.47 ng/ml



#22 AR-1248-2

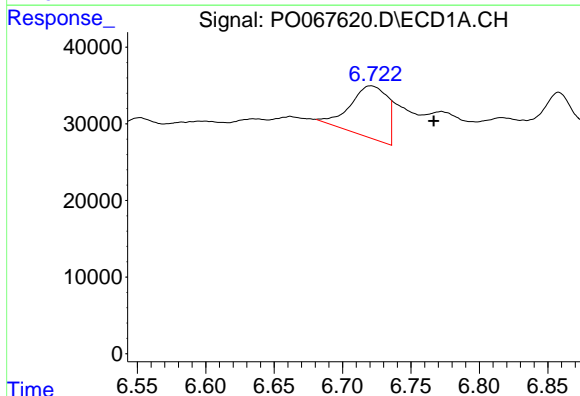
R.T.: 0.000 min
 Exp R.T.: 6.550 min
 Response: 0
 Conc: N.D.

Instrument :
 ECD_O
 ClientSampleId :
 DUP-15



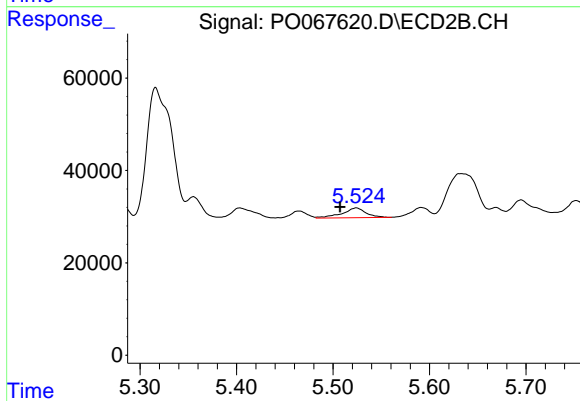
#22 AR-1248-2

R.T.: 5.465 min
 Delta R.T.: 0.002 min
 Response: 19442
 Conc: 19.32 ng/ml



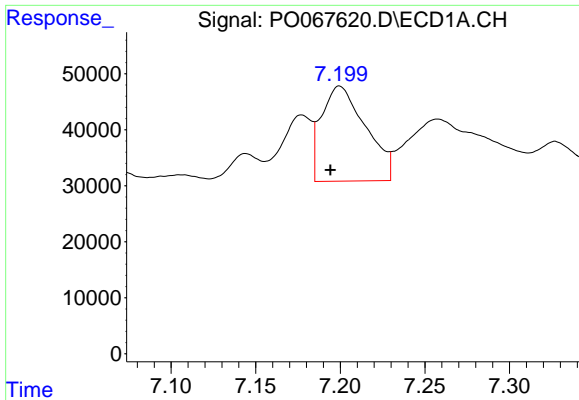
#23 AR-1248-3

R.T.: 6.721 min
 Delta R.T.: -0.046 min
 Response: 116489
 Conc: 143.13 ng/ml



#23 AR-1248-3

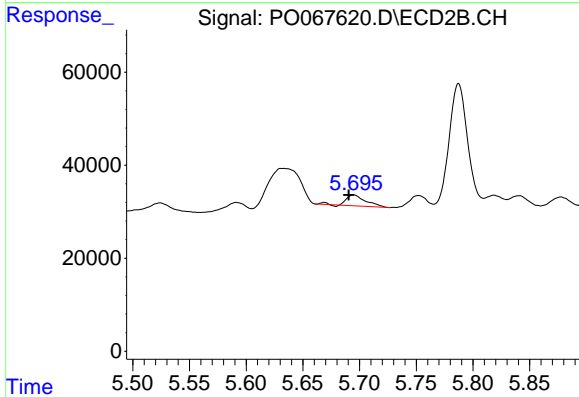
R.T.: 5.524 min
 Delta R.T.: 0.017 min
 Response: 36958
 Conc: 36.13 ng/ml



#24 AR-1248-4

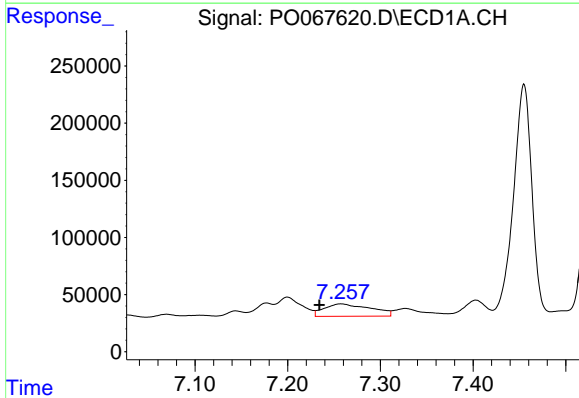
R.T.: 7.200 min
 Delta R.T.: 0.005 min
 Response: 308023
 Conc: 326.48 ng/ml

Instrument :
 ECD_O
 ClientSampled :
 DUP-15



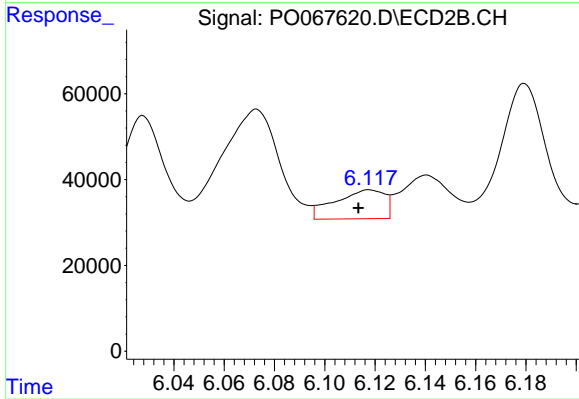
#24 AR-1248-4

R.T.: 5.695 min
 Delta R.T.: 0.005 min
 Response: 28136
 Conc: 22.58 ng/ml



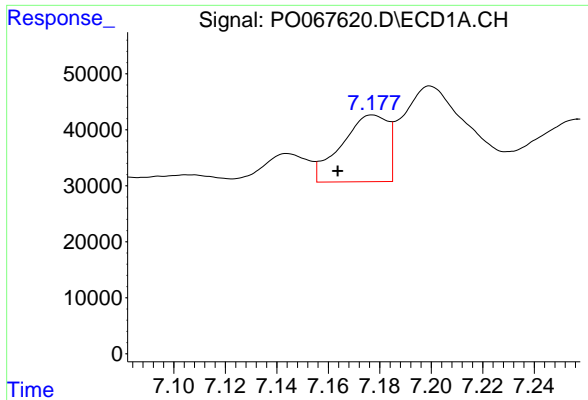
#25 AR-1248-5

R.T.: 7.258 min
 Delta R.T.: 0.023 min
 Response: 375964
 Conc: 417.18 ng/ml



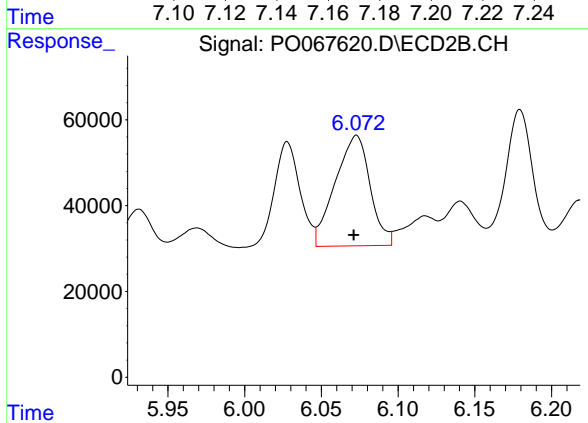
#25 AR-1248-5

R.T.: 6.118 min
 Delta R.T.: 0.005 min
 Response: 92239
 Conc: 74.54 ng/ml

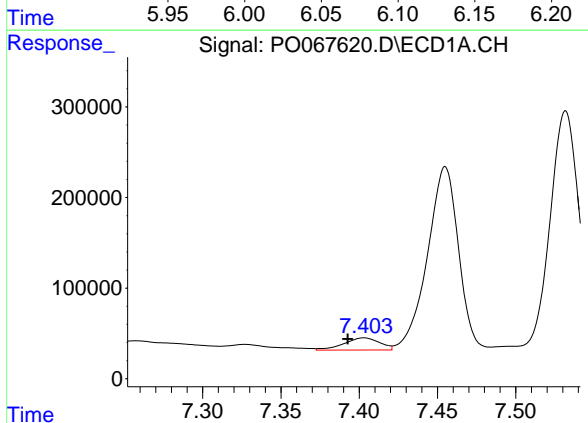


#26 AR-1254-1
 R.T.: 7.177 min
 Delta R.T.: 0.013 min
 Response: 149293
 Conc: 152.17 ng/ml

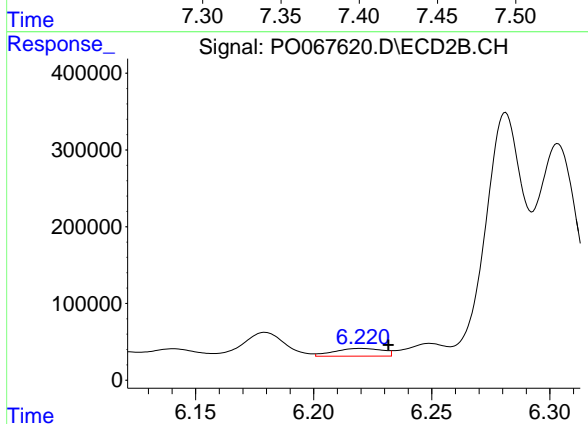
Instrument :
 ECD_O
 ClientSampled :
 DUP-15



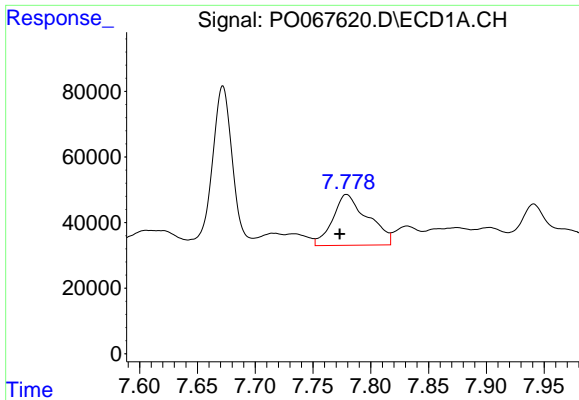
#26 AR-1254-1
 R.T.: 6.073 min
 Delta R.T.: 0.001 min
 Response: 408714
 Conc: 210.71 ng/ml



#27 AR-1254-2
 R.T.: 7.403 min
 Delta R.T.: 0.010 min
 Response: 216573
 Conc: 139.99 ng/ml



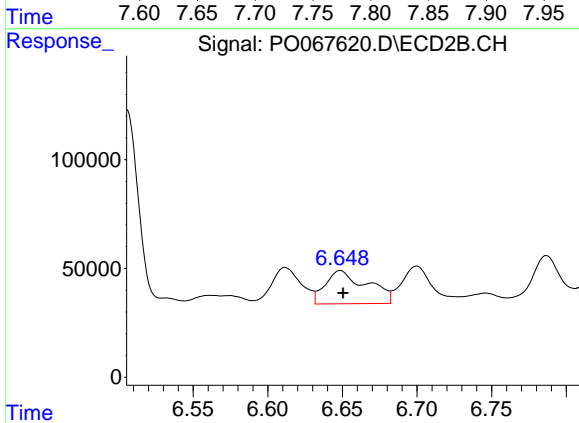
#27 AR-1254-2
 R.T.: 6.220 min
 Delta R.T.: -0.012 min
 Response: 142305
 Conc: 81.69 ng/ml



#28 AR-1254-3

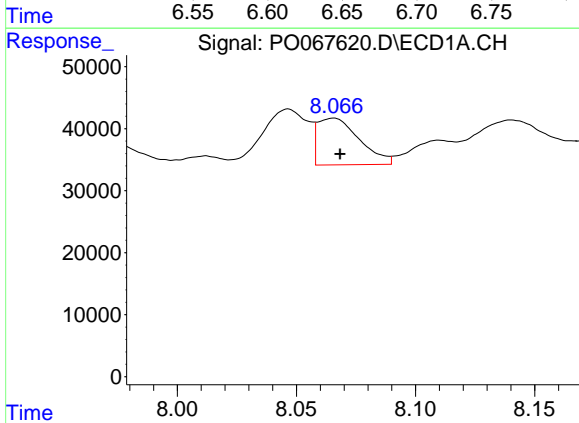
R.T.: 7.779 min
 Delta R.T.: 0.006 min
 Response: 327703
 Conc: 200.44 ng/ml

Instrument :
 ECD_O
 ClientSampled :
 DUP-15



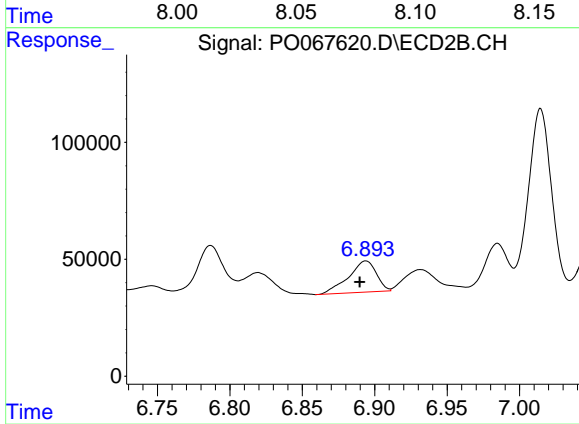
#28 AR-1254-3

R.T.: 6.649 min
 Delta R.T.: -0.002 min
 Response: 297912
 Conc: 107.54 ng/ml



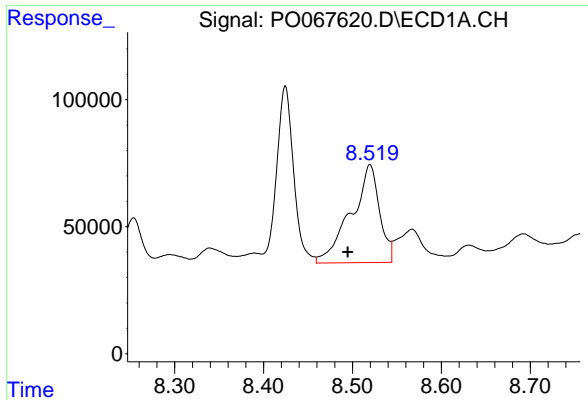
#29 AR-1254-4

R.T.: 8.066 min
 Delta R.T.: -0.003 min
 Response: 91818
 Conc: 71.64 ng/ml



#29 AR-1254-4

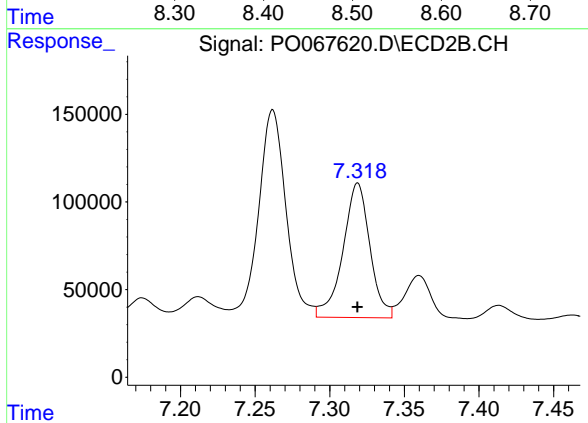
R.T.: 6.894 min
 Delta R.T.: 0.004 min
 Response: 179367
 Conc: 98.15 ng/ml



#30 AR-1254-5

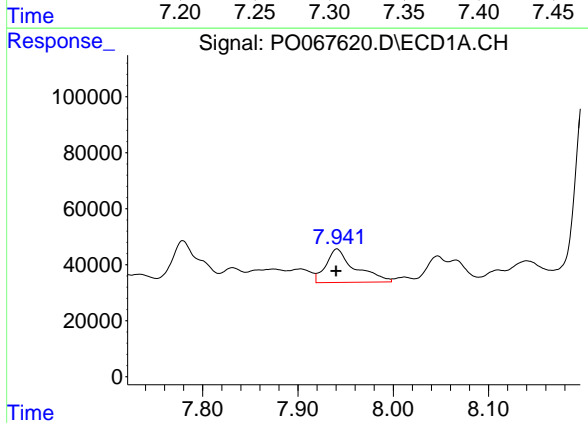
R.T.: 8.520 min
 Delta R.T.: 0.025 min
 Response: 857602
 Conc: 623.38 ng/ml

Instrument :
 ECD_O
 ClientSampled :
 DUP-15



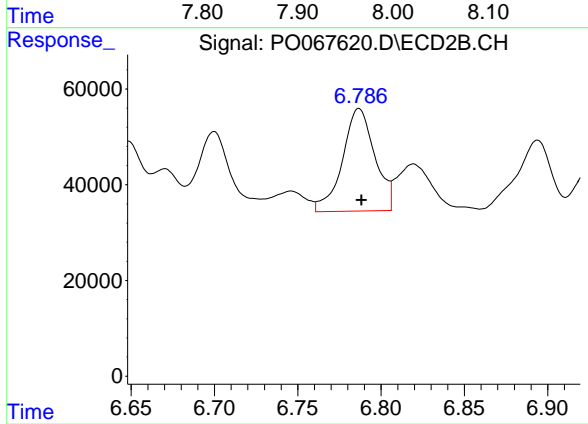
#30 AR-1254-5

R.T.: 7.319 min
 Delta R.T.: 0.000 min
 Response: 965398
 Conc: 378.91 ng/ml



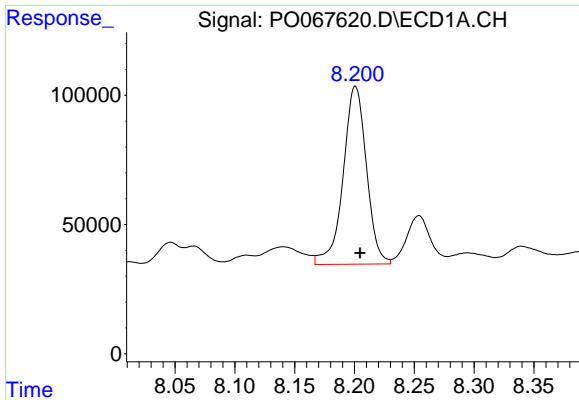
#31 AR-1260-1

R.T.: 7.941 min
 Delta R.T.: 0.000 min
 Response: 252225
 Conc: 186.64 ng/ml



#31 AR-1260-1

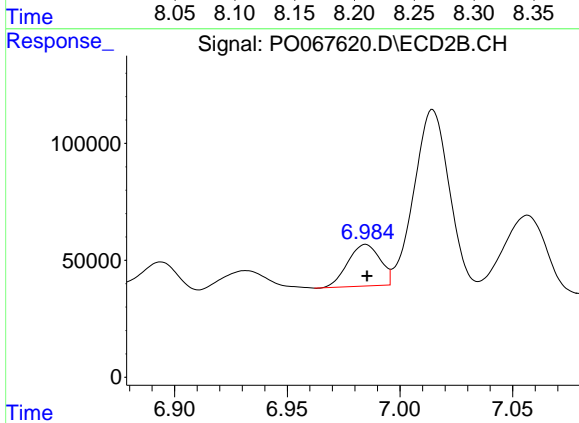
R.T.: 6.787 min
 Delta R.T.: -0.001 min
 Response: 290297
 Conc: 138.47 ng/ml



#32 AR-1260-2

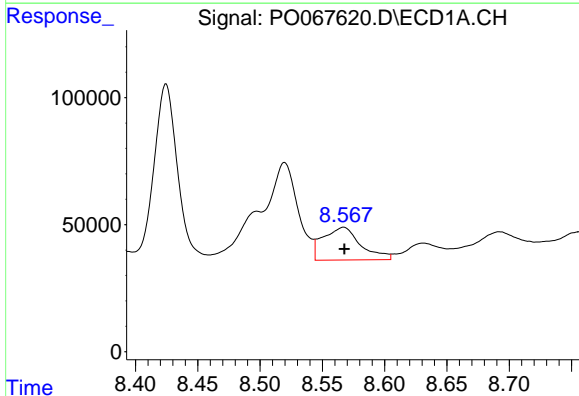
R.T.: 8.201 min
 Delta R.T.: -0.004 min
 Response: 932214
 Conc: 552.20 ng/ml

Instrument :
 ECD_O
 ClientSampled :
 DUP-15



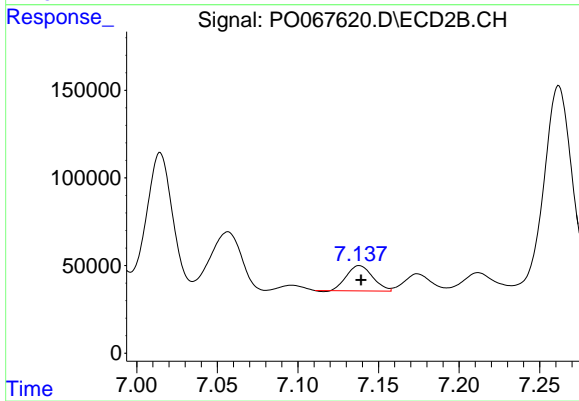
#32 AR-1260-2

R.T.: 6.985 min
 Delta R.T.: 0.000 min
 Response: 177245
 Conc: 69.03 ng/ml



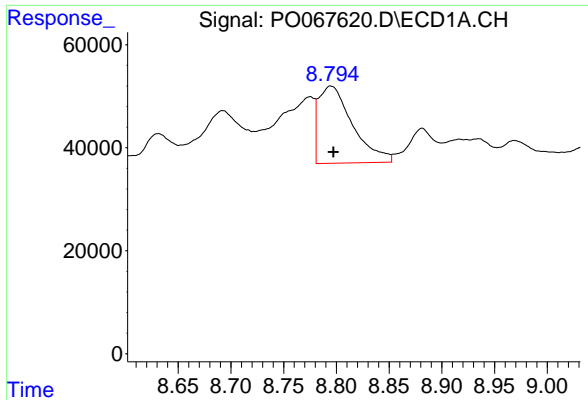
#33 AR-1260-3

R.T.: 8.567 min
 Delta R.T.: 0.000 min
 Response: 270424
 Conc: 207.46 ng/ml



#33 AR-1260-3

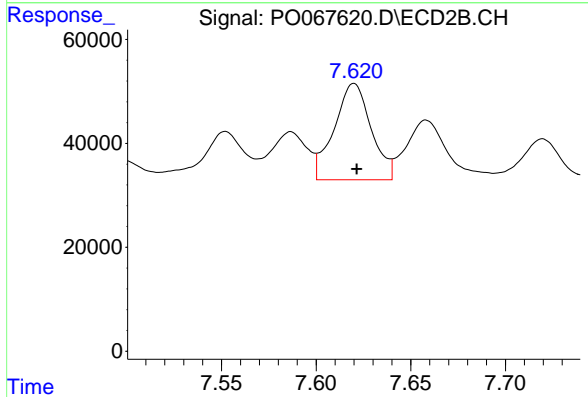
R.T.: 7.138 min
 Delta R.T.: -0.001 min
 Response: 161813
 Conc: 67.29 ng/ml



#34 AR-1260-4

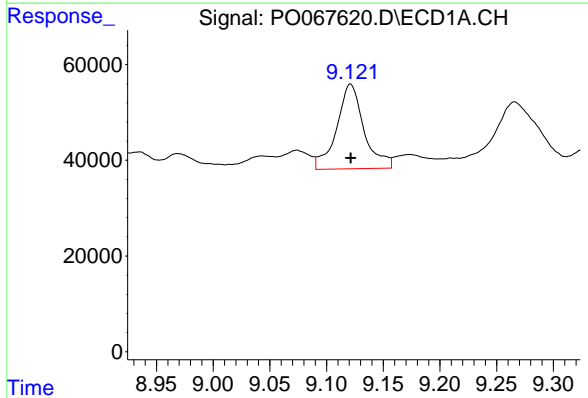
R.T.: 8.795 min
 Delta R.T.: -0.003 min
 Response: 336512
 Conc: 218.97 ng/ml

Instrument :
 ECD_O
 ClientSampleId :
 DUP-15



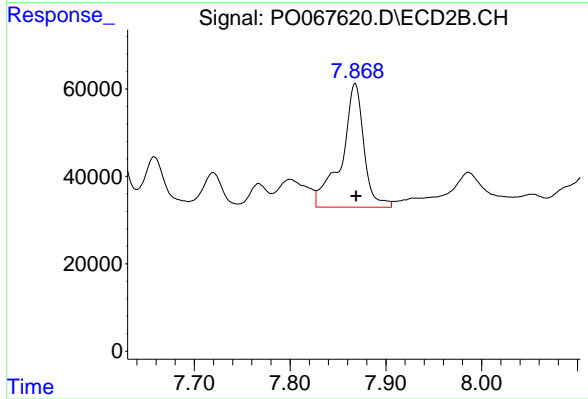
#34 AR-1260-4

R.T.: 7.620 min
 Delta R.T.: -0.001 min
 Response: 252691
 Conc: 120.23 ng/ml



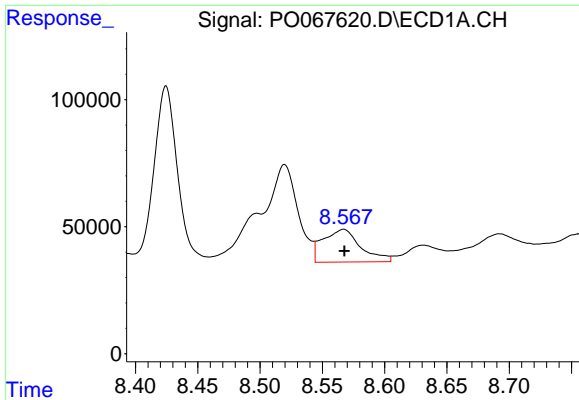
#35 AR-1260-5

R.T.: 9.121 min
 Delta R.T.: 0.000 min
 Response: 296054
 Conc: 93.85 ng/ml



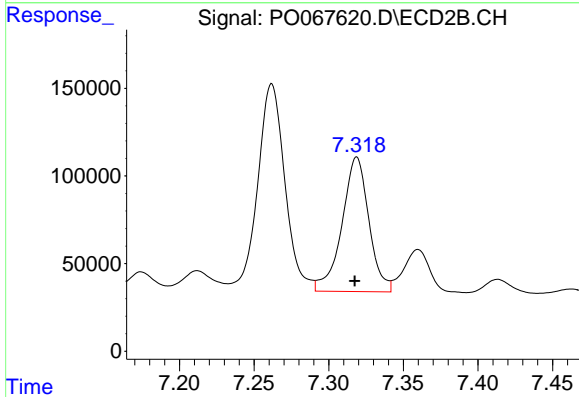
#35 AR-1260-5

R.T.: 7.868 min
 Delta R.T.: 0.000 min
 Response: 457367
 Conc: 90.34 ng/ml

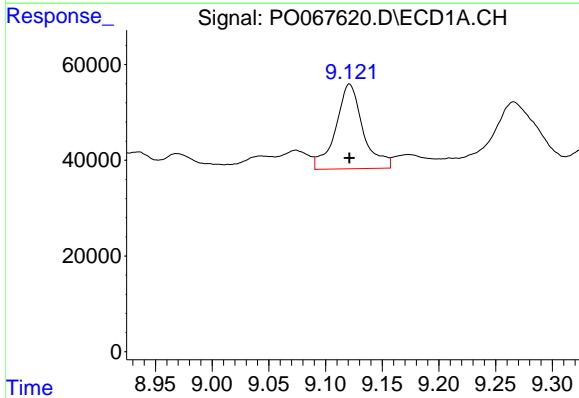


#36 AR-1262-1
 R.T.: 8.567 min
 Delta R.T.: 0.000 min
 Response: 270424
 Conc: 161.31 ng/ml

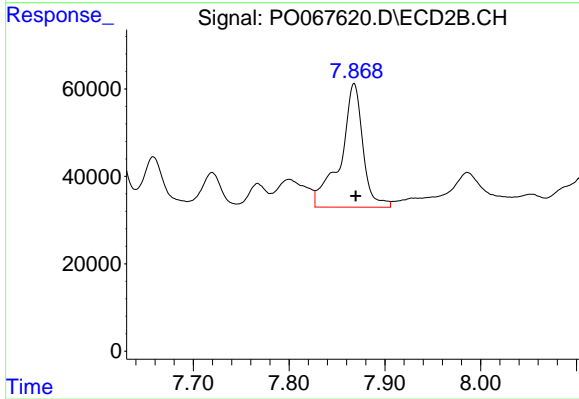
Instrument :
 ECD_O
 ClientSampled :
 DUP-15



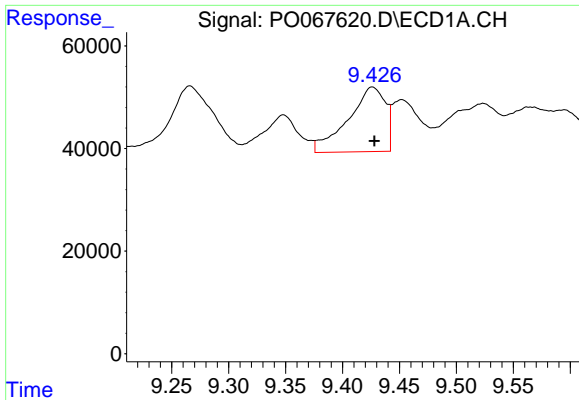
#36 AR-1262-1
 R.T.: 7.319 min
 Delta R.T.: 0.001 min
 Response: 965398
 Conc: 696.67 ng/ml



#37 AR-1262-2
 R.T.: 9.121 min
 Delta R.T.: 0.000 min
 Response: 296054
 Conc: 103.17 ng/ml



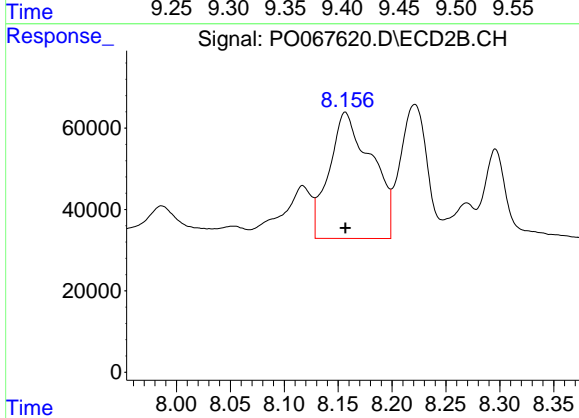
#37 AR-1262-2
 R.T.: 7.868 min
 Delta R.T.: -0.002 min
 Response: 457367
 Conc: 100.03 ng/ml



#38 AR-1262-3

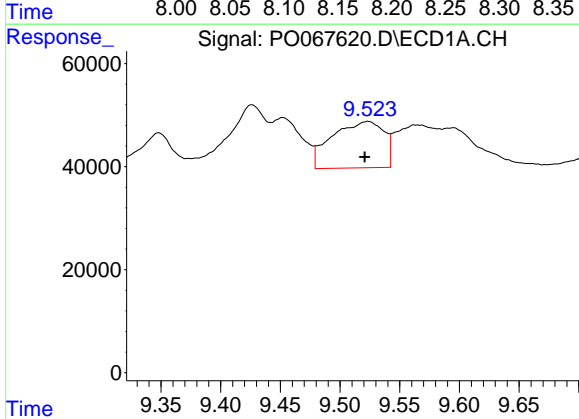
R.T.: 9.426 min
 Delta R.T.: -0.002 min
 Response: 287275
 Conc: 138.06 ng/ml

Instrument :
 ECD_O
ClientSampled :
 DUP-15



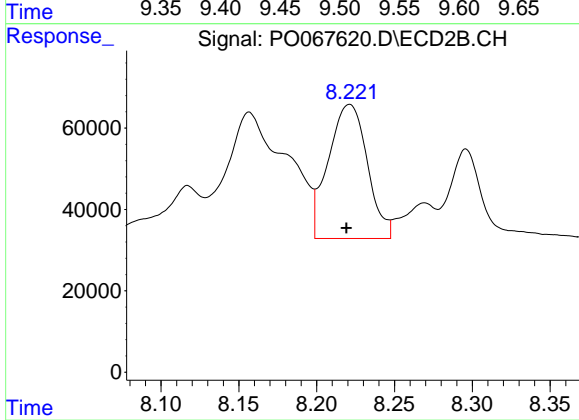
#38 AR-1262-3

R.T.: 8.157 min
 Delta R.T.: 0.000 min
 Response: 848808
 Conc: 431.86 ng/ml



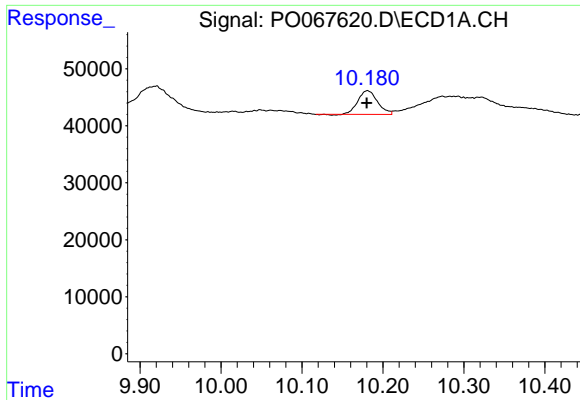
#39 AR-1262-4

R.T.: 9.524 min
 Delta R.T.: 0.003 min
 Response: 272736
 Conc: 172.36 ng/ml



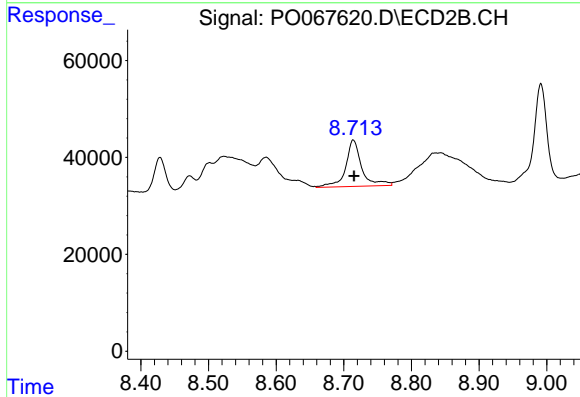
#39 AR-1262-4

R.T.: 8.221 min
 Delta R.T.: 0.002 min
 Response: 575150
 Conc: 167.78 ng/ml

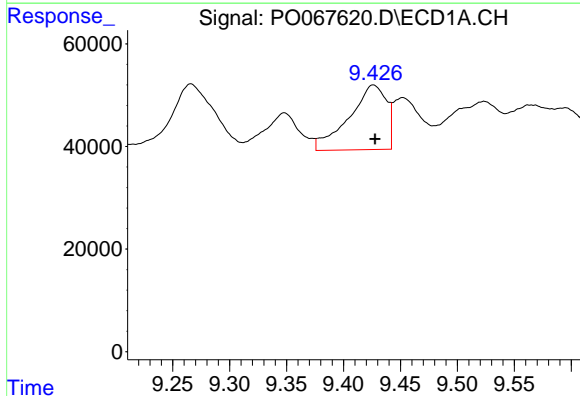


#40 AR-1262-5
 R.T.: 10.181 min
 Delta R.T.: 0.000 min
 Response: 69596
 Conc: 59.03 ng/ml

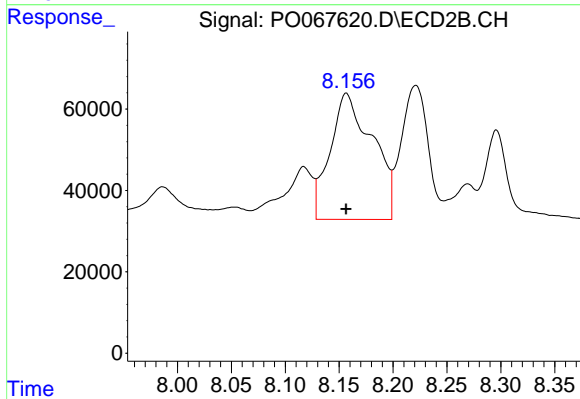
Instrument :
 ECD_O
 ClientSampleId :
 DUP-15



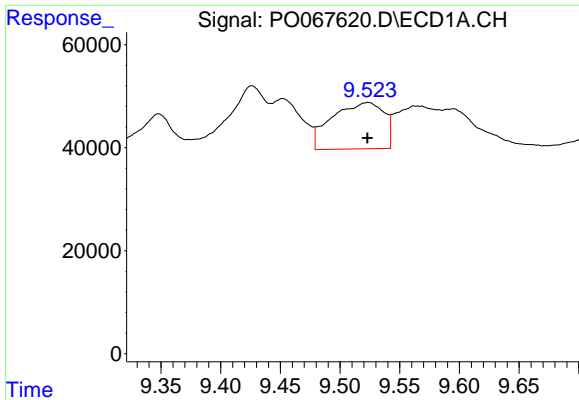
#40 AR-1262-5
 R.T.: 8.714 min
 Delta R.T.: 0.000 min
 Response: 158881
 Conc: 93.47 ng/ml



#41 AR-1268-1
 R.T.: 9.426 min
 Delta R.T.: -0.002 min
 Response: 287275
 Conc: 77.74 ng/ml

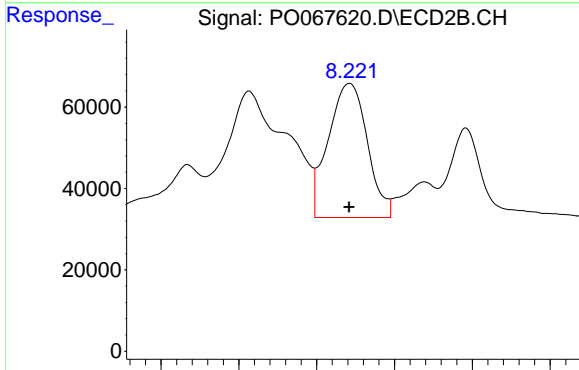


#41 AR-1268-1
 R.T.: 8.157 min
 Delta R.T.: 0.000 min
 Response: 848808
 Conc: 157.75 ng/ml

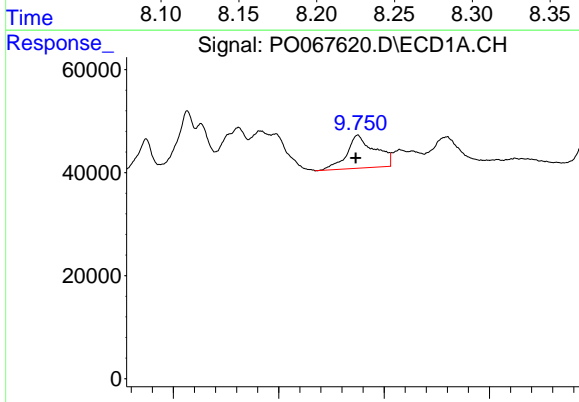


#42 AR-1268-2
 R.T.: 9.524 min
 Delta R.T.: 0.000 min
 Response: 272736
 Conc: 78.69 ng/ml

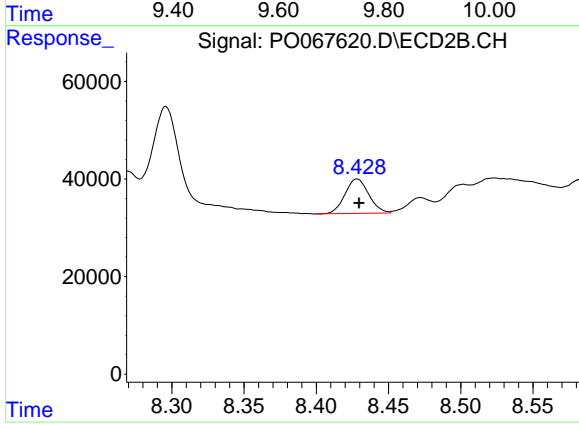
Instrument :
 ECD_O
 ClientSampleId :
 DUP-15



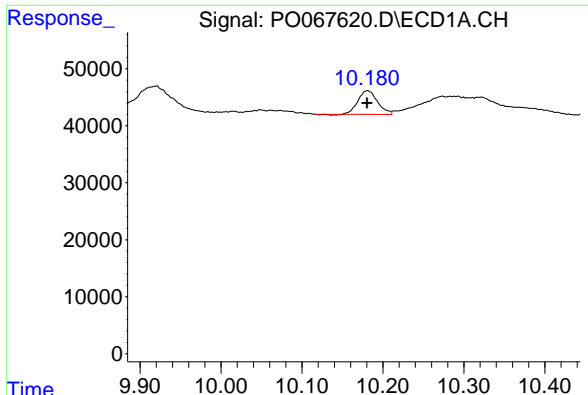
#42 AR-1268-2
 R.T.: 8.221 min
 Delta R.T.: 0.000 min
 Response: 575150
 Conc: 116.49 ng/ml



#43 AR-1268-3
 R.T.: 9.750 min
 Delta R.T.: 0.004 min
 Response: 238561
 Conc: 82.16 ng/ml

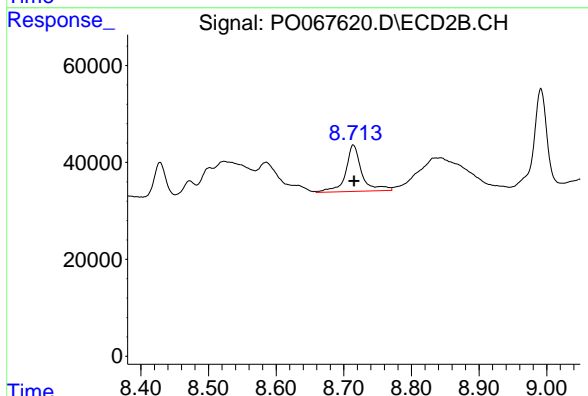


#43 AR-1268-3
 R.T.: 8.428 min
 Delta R.T.: -0.001 min
 Response: 81298
 Conc: 19.40 ng/ml

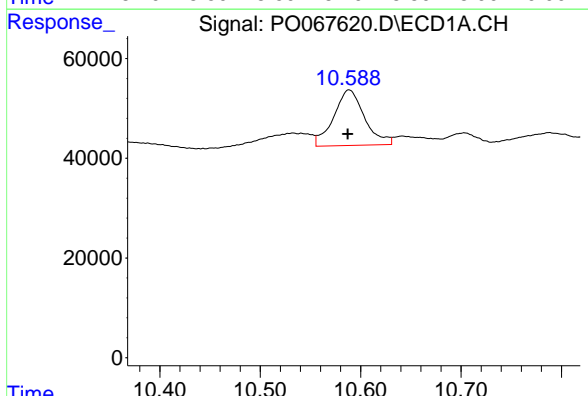


#44 AR-1268-4
 R.T.: 10.181 min
 Delta R.T.: 0.000 min
 Response: 69596
 Conc: 50.13 ng/ml

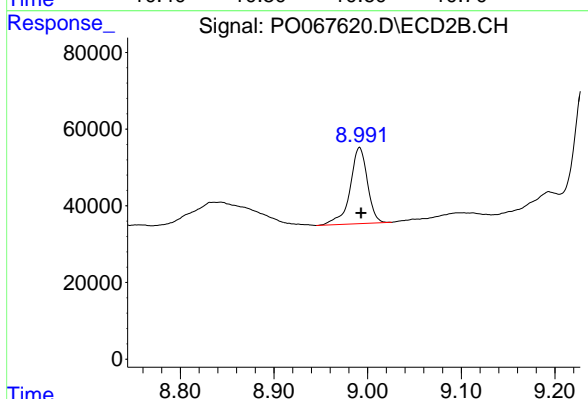
Instrument :
 ECD_O
 ClientSampled :
 DUP-15



#44 AR-1268-4
 R.T.: 8.714 min
 Delta R.T.: 0.000 min
 Response: 158881
 Conc: 82.11 ng/ml



#45 AR-1268-5
 R.T.: 10.589 min
 Delta R.T.: 0.001 min
 Response: 237763
 Conc: 23.98 ng/ml



#45 AR-1268-5
 R.T.: 8.991 min
 Delta R.T.: -0.001 min
 Response: 255839
 Conc: 19.84 ng/ml