

Data Path : P:\HPCHEM1\ECD\_O\Data\PO040318\  
 Data File : PO043550.D  
 Signal(s) : Signal #1: ECD1A.CH Signal #2: ECD2B.CH  
 Acq On : 04 Apr 2018 1:57  
 Operator : SM/UA  
 Sample : PB107789BL  
 Misc :  
 ALS Vial : 24 Sample Multiplier: 1

Instrument :  
 ECD\_O  
 ClientSampleId :  
 PB107789BL

Integration File signal 1: autoint1.e  
 Integration File signal 2: autoint2.e  
 Quant Time: Apr 04 03:37:52 2018  
 Quant Method : P:\HPCHEM1\ECD\_O\methods\PO040218.M  
 Quant Title : GC EXTRACTABLES  
 QLast Update : Tue Apr 03 09:11:46 2018  
 Response via : Initial Calibration  
 Integrator: ChemStation 6890 Scale Mode: Small noise peaks clipped

Volume Inj. : 2 µl  
 Signal #1 Phase : ZB-MR1 Signal #2 Phase: ZB-MR2  
 Signal #1 Info : 30Mx0.32mmx 0.50µ Signal #2 Info : 30M x 0.32mm x 0.25µm

Compound	RT#1	RT#2	Resp#1	Resp#2	ng/ml	ng/ml
-----						
System Monitoring Compounds						
1) SA Tetrachlo...	4.065	3.321	9769411	13222258	17.582	17.136
2) SA Decachlor...	9.415	8.090	6772049	8103649	13.712	12.221
Target Compounds						
7) L1 AR-1016-5	0.000	5.137	0	977180	N.D.	53.964 #
23) L5 AR-1248-3	0.000	5.137	0	977180	N.D.	27.704 #
24) L5 AR-1248-4	0.000	5.137	0	977180	N.D.	34.473 #
26) L6 AR-1254-1	0.000	5.137	0	977180	N.D.	22.136 #
27) L6 AR-1254-2	0.000	5.279	0	1243508	N.D.	31.698 #
-----						

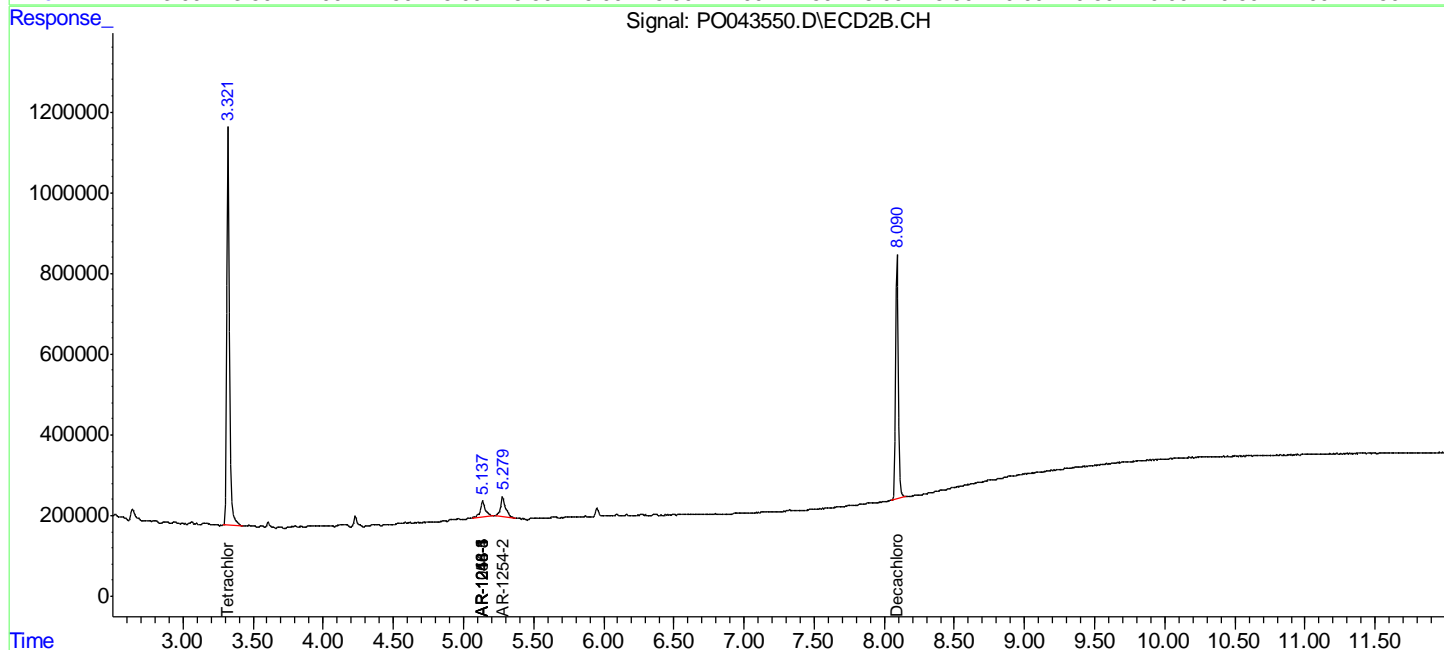
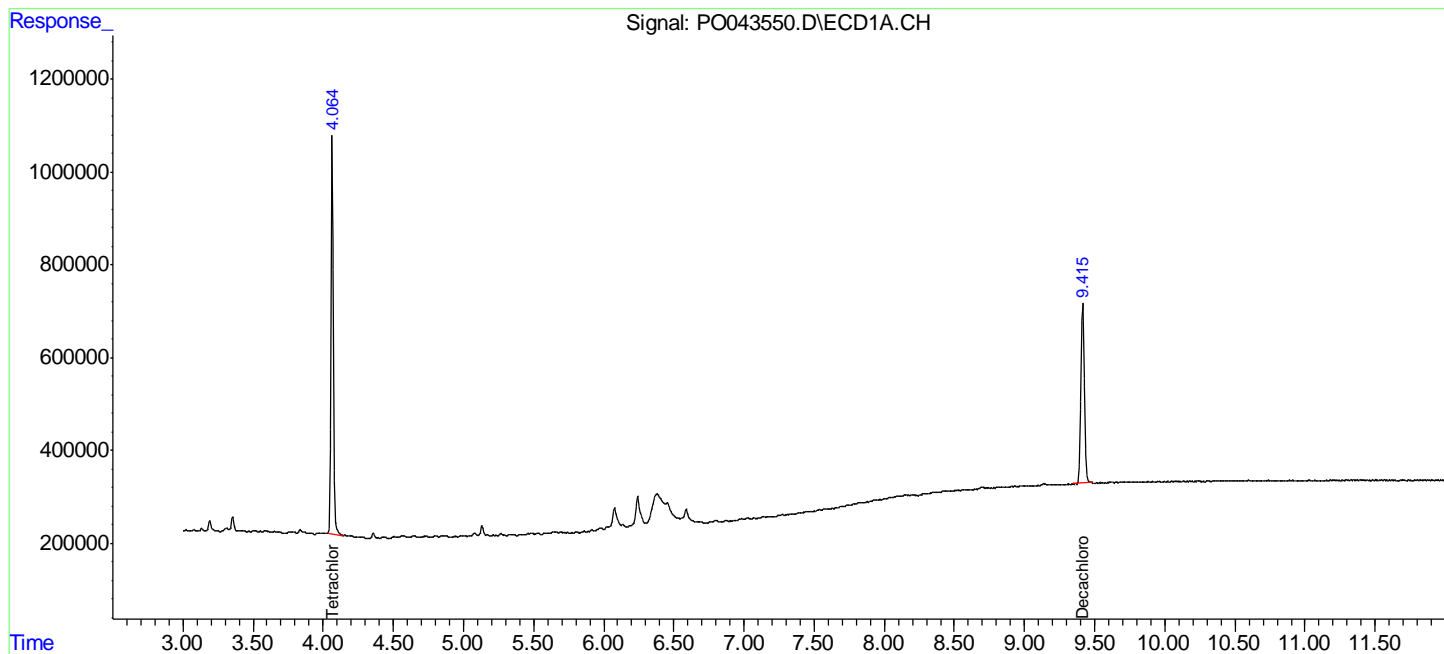
(f)=RT Delta > 1/2 Window (#)=Amounts differ by > 25% (m)=manual int.

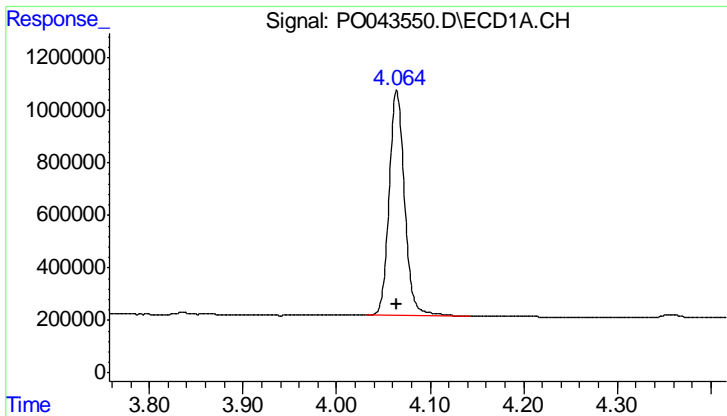
Data Path : P:\HPCHEM1\ECD\_O\Data\PO040318\  
 Data File : PO043550.D  
 Signal(s) : Signal #1: ECD1A.CH Signal #2: ECD2B.CH  
 Acq On : 04 Apr 2018 1:57  
 Operator : SM/UA  
 Sample : PB107789BL  
 Misc :  
 ALS Vial : 24 Sample Multiplier: 1

Instrument :  
 ECD\_O  
 ClientSampled :  
 PB107789BL

Integration File signal 1: autoint1.e  
 Integration File signal 2: autoint2.e  
 Quant Time: Apr 04 03:37:52 2018  
 Quant Method : P:\HPCHEM1\ECD\_O\methods\PO040218.M  
 Quant Title : GC EXTRACTABLES  
 QLast Update : Tue Apr 03 09:11:46 2018  
 Response via : Initial Calibration  
 Integrator: ChemStation 6890 Scale Mode: Small noise peaks clipped

Volume Inj. : 2 µl  
 Signal #1 Phase : ZB-MR1 Signal #2 Phase: ZB-MR2  
 Signal #1 Info : 30Mx0.32mmx 0.50µ Signal #2 Info : 30M x 0.32mm x 0.25µm

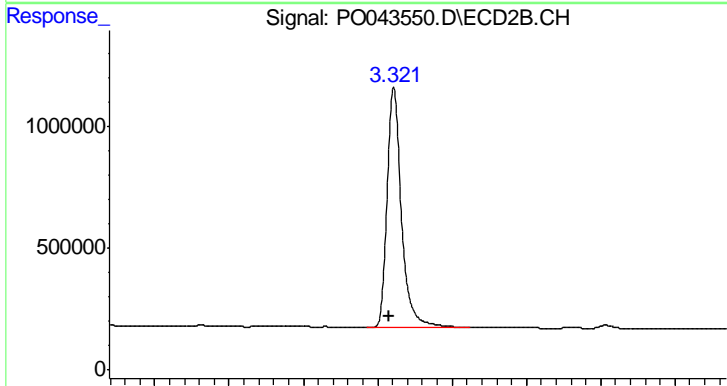




#1 Tetrachloro-m-xylene

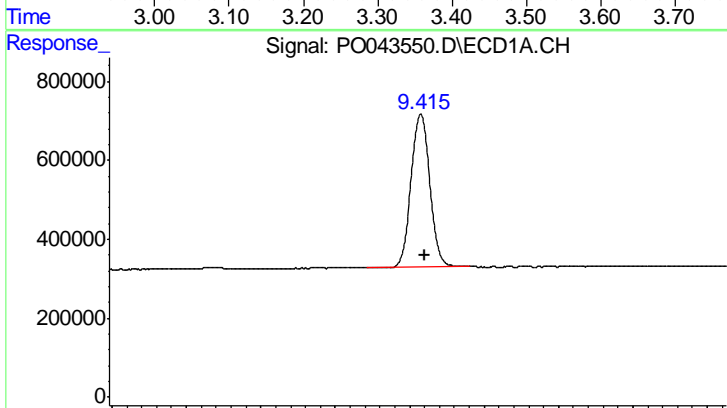
R.T.: 4.065 min  
 Delta R.T.: 0.000 min  
 Response: 9769411  
 Conc: 17.58 ng/ml

Instrument :  
 ECD\_O  
 ClientSampleId :  
 PB107789BL



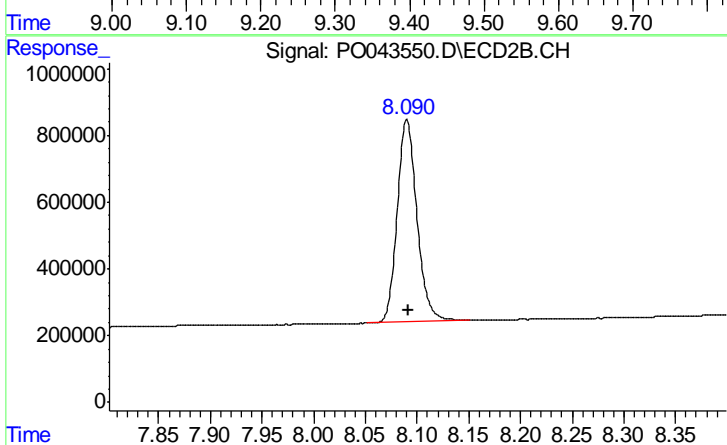
#1 Tetrachloro-m-xylene

R.T.: 3.321 min  
 Delta R.T.: 0.005 min  
 Response: 13222258  
 Conc: 17.14 ng/ml



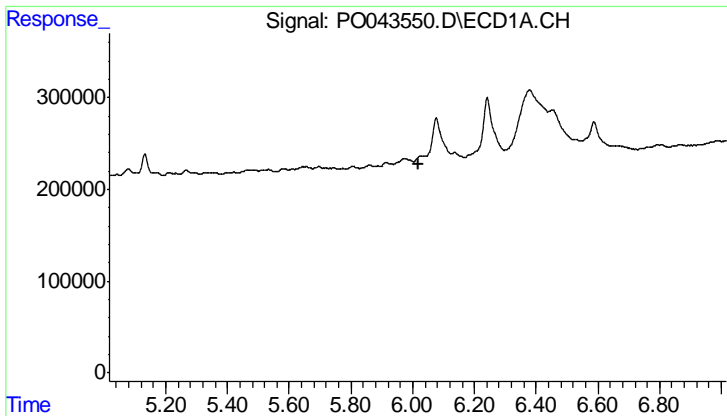
#2 Decachlorobiphenyl

R.T.: 9.415 min  
 Delta R.T.: -0.005 min  
 Response: 6772049  
 Conc: 13.71 ng/ml



#2 Decachlorobiphenyl

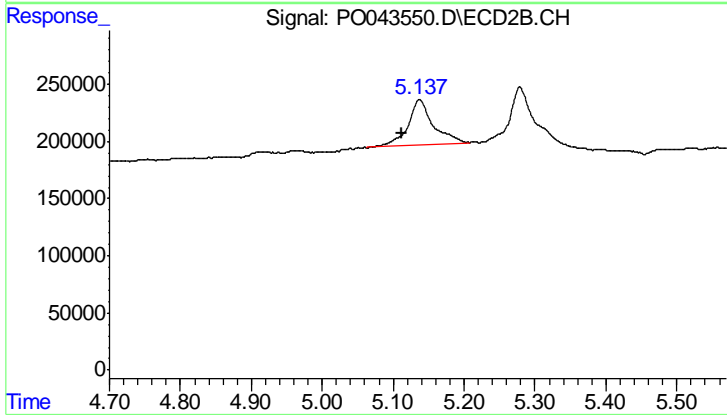
R.T.: 8.090 min  
 Delta R.T.: -0.002 min  
 Response: 8103649  
 Conc: 12.22 ng/ml



#7 AR-1016-5

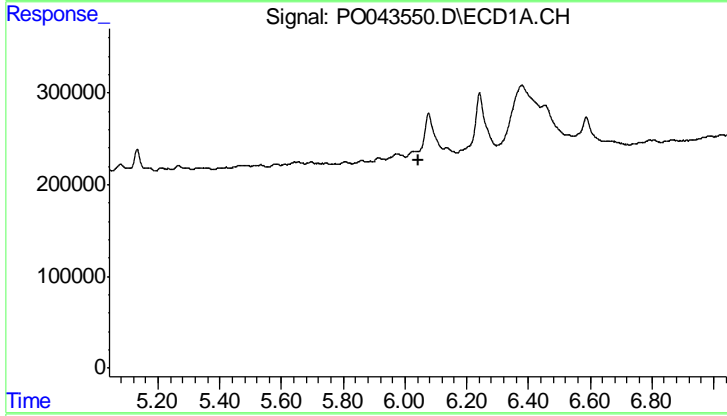
R.T.: 0.000 min  
 Exp R.T.: 6.017 min  
 Response: 0  
 Conc: N.D.

Instrument :  
 ECD\_O  
 ClientSampleId :  
 PB107789BL



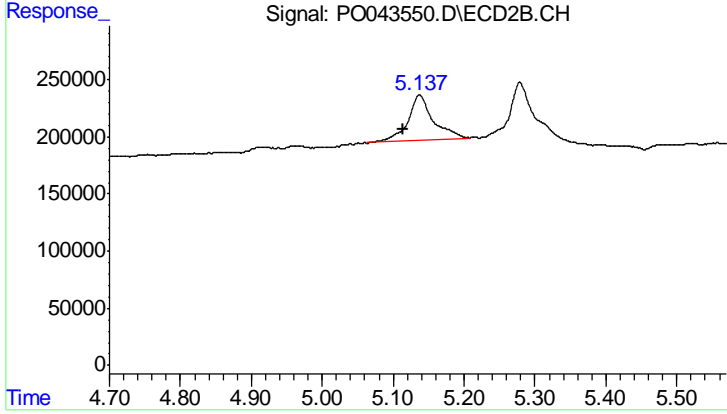
#7 AR-1016-5

R.T.: 5.137 min  
 Delta R.T.: 0.026 min  
 Response: 977180  
 Conc: 53.96 ng/ml



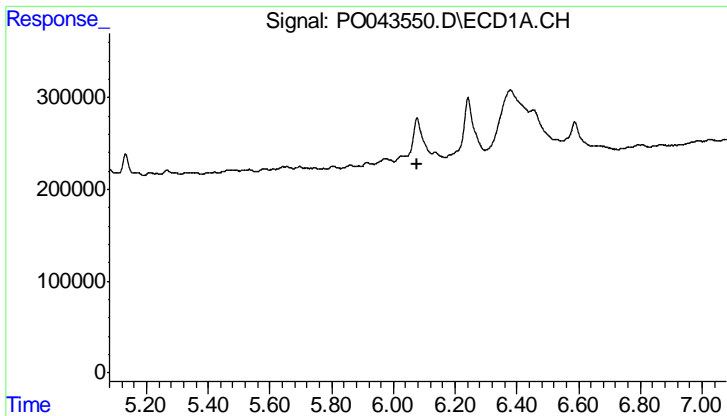
#23 AR-1248-3

R.T.: 0.000 min  
 Exp R.T.: 6.042 min  
 Response: 0  
 Conc: N.D.



#23 AR-1248-3

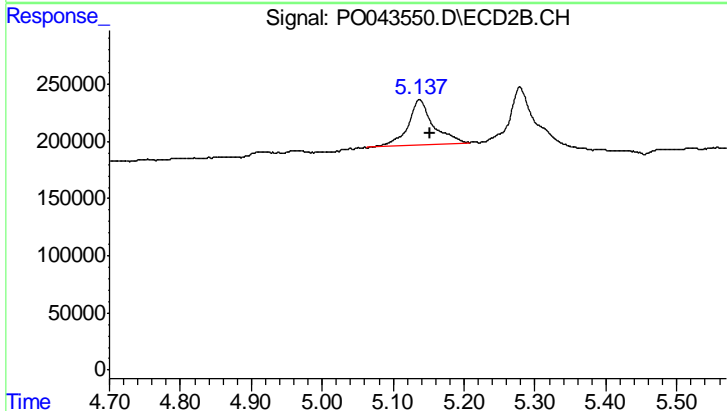
R.T.: 5.137 min  
 Delta R.T.: 0.024 min  
 Response: 977180  
 Conc: 27.70 ng/ml



#24 AR-1248-4

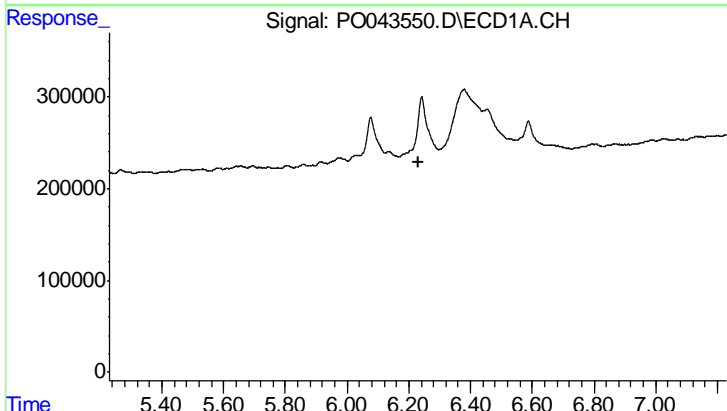
R.T.: 0.000 min  
 Exp R.T.: 6.079 min  
 Response: 0  
 Conc: N.D.

Instrument :  
 ECD\_O  
 ClientSampleId :  
 PB107789BL



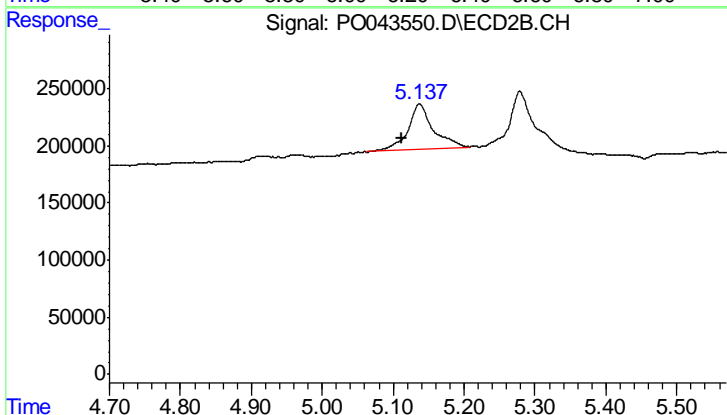
#24 AR-1248-4

R.T.: 5.137 min  
 Delta R.T.: -0.015 min  
 Response: 977180  
 Conc: 34.47 ng/ml



#26 AR-1254-1

R.T.: 0.000 min  
 Exp R.T.: 6.230 min  
 Response: 0  
 Conc: N.D.



#26 AR-1254-1

R.T.: 5.137 min  
 Delta R.T.: 0.024 min  
 Response: 977180  
 Conc: 22.14 ng/ml