

Data Path : P:\HPCHEM1\ECD O\Data\PO040318\
 Data File : PO043496.D
 Signal(s) : Signal #1: ECD1A.CH Signal #2: ECD2B.CH
 Acq On : 03 Apr 2018 11:35
 Operator : SM/UA
 Sample : J2142-01
 Misc :
 ALS Vial : 8 Sample Multiplier: 1

Instrument :
 ECD_O
ClientSampled :
 GB-RT-2334

Manual Integrations
APPROVED
 ugo
 4/6/2018 2:43:38 PM

Integration File signal 1: autoint1.e
 Integration File signal 2: autoint2.e
 Quant Time: Apr 03 13:44:09 2018
 Quant Method : P:\HPCHEM1\ECD_O\methods\PO040218.M
 Quant Title : GC EXTRACTABLES
 QLast Update : Tue Apr 03 09:11:46 2018
 Response via : Initial Calibration
 Integrator: ChemStation 6890 Scale Mode: Small noise peaks clipped

ugo

4/6/2018 2:43:38 PM

Volume Inj. : 2 µl
 Signal #1 Phase : ZB-MR1 Signal #2 Phase: ZB-MR2
 Signal #1 Info : 30Mx0.32mmx 0.50µ Signal #2 Info : 30M x 0.32mm x 0.25µm

Compound	RT#1	RT#2	Resp#1	Resp#2	nq/ml	nq/ml

System Monitoring Compounds						
1) SA Tetrachlo...	4.065	3.320	9351605	15182152	16.830m	19.676
2) SA Decachlor...	9.415	8.089	5502705	5786155	11.142	8.726

Target Compounds

(f)=RT Delta > 1/2 Window (#)=Amounts differ by > 25% (m)=manual int.

Data Path : P:\HPCHEM1\ECD O\Data\PO040318\
 Data File : PO043496.D
 Signal(s) : Signal #1: ECD1A.CH Signal #2: ECD2B.CH
 Acq On : 03 Apr 2018 11:35
 Operator : SM/UA
 Sample : J2142-01
 Misc :
 ALS Vial : 8 Sample Multiplier: 1

Instrument :
 ECD_O
 Client Sampled :
 GB-RT-2334

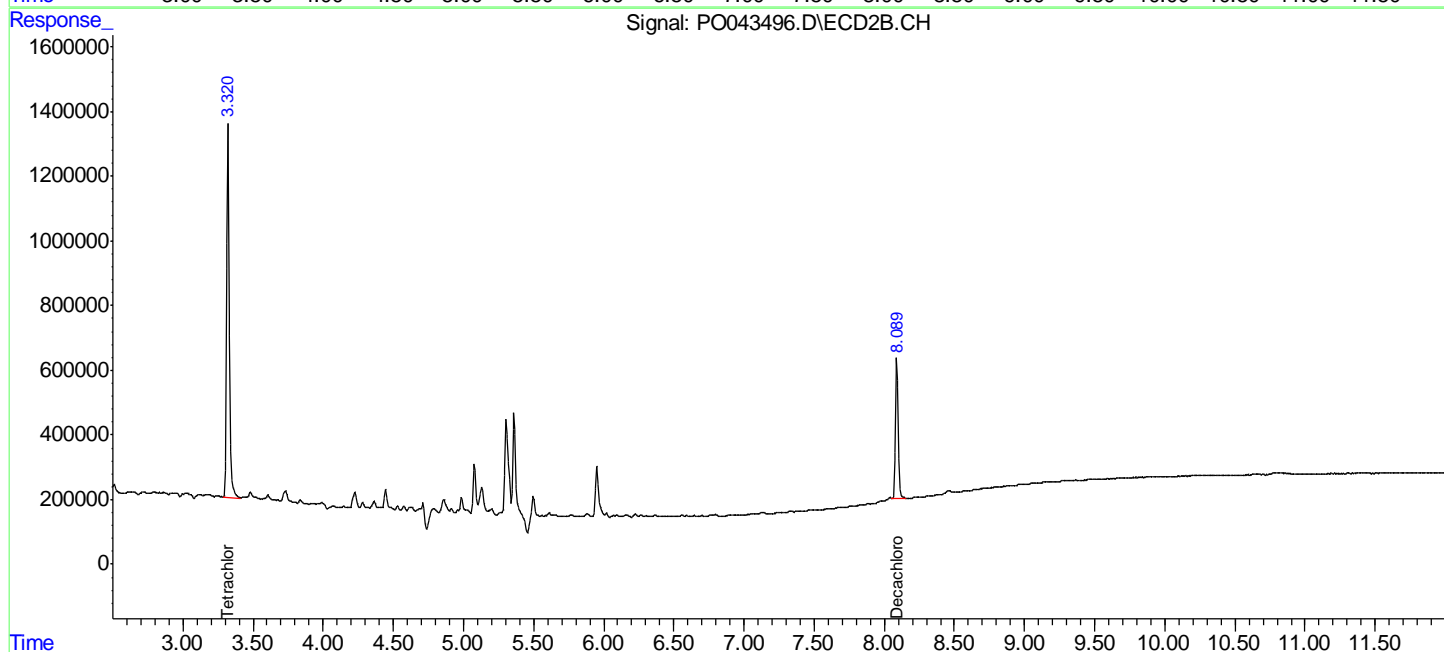
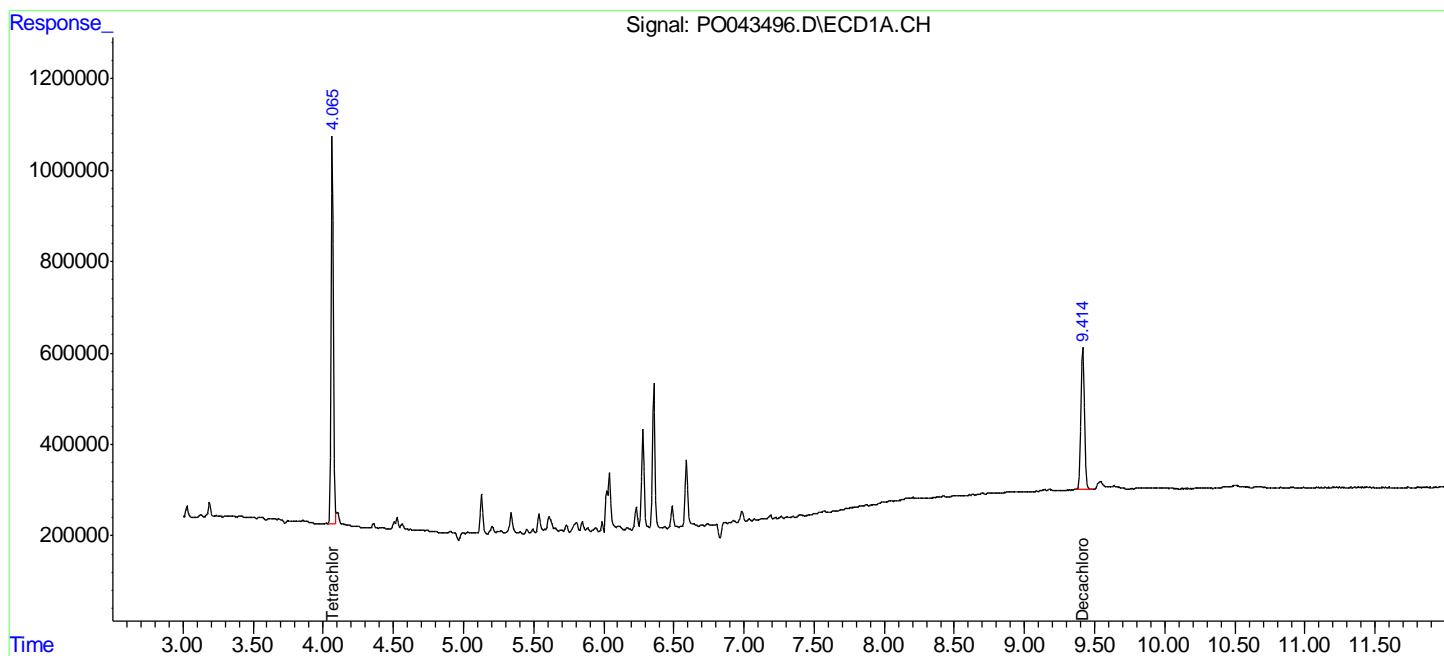
Manual Integrations
APPROVED
 ugo
 4/6/2018 2:43:38 PM

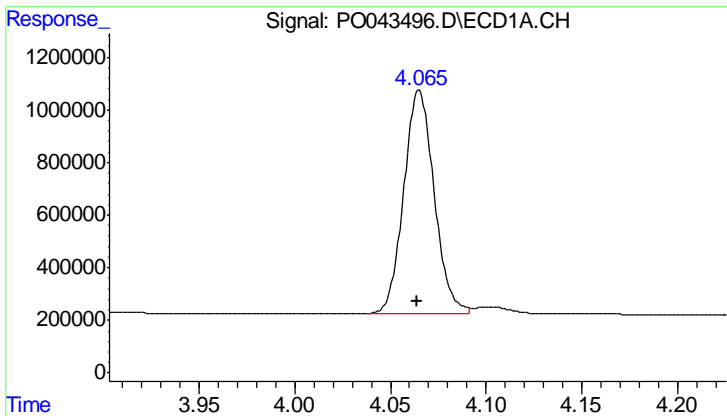
Integration File signal 1: autoint1.e
 Integration File signal 2: autoint2.e
 Quant Time: Apr 03 13:44:09 2018
 Quant Method : P:\HPCHEM1\ECD_O\methods\PO040218.M
 Quant Title : GC EXTRACTABLES
 QLast Update : Tue Apr 03 09:11:46 2018
 Response via : Initial Calibration
 Integrator: ChemStation 6890 Scale Mode: Small noise peaks clipped

ugo

4/6/2018 2:43:38 PM

Volume Inj. : 2 µl
 Signal #1 Phase : ZB-MR1 Signal #2 Phase: ZB-MR2
 Signal #1 Info : 30Mx0.32mmx 0.50µ Signal #2 Info : 30M x 0.32mm x 0.25µm





#1 Tetrachloro-m-xylene

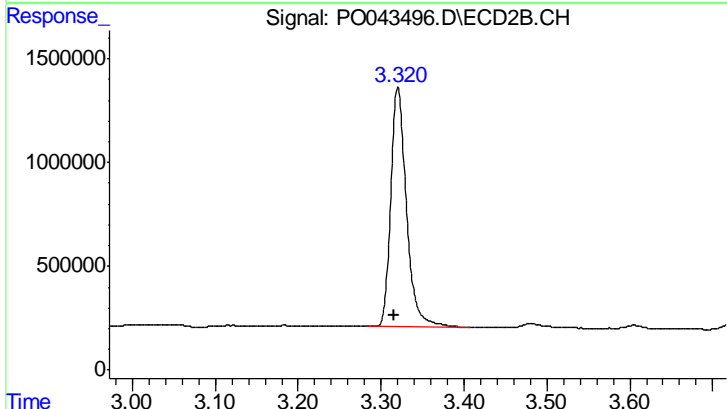
R.T.: 4.065 min
 Delta R.T.: 0.000 min
 Response: 9351605
 Conc: 16.83 ng/ml

Instrument :
 ECD_O
 ClientSampleId :
 GB-RT-2334

Manual Integrations
 APPROVED

ugo
 4/6/2018 2:43:38 PM

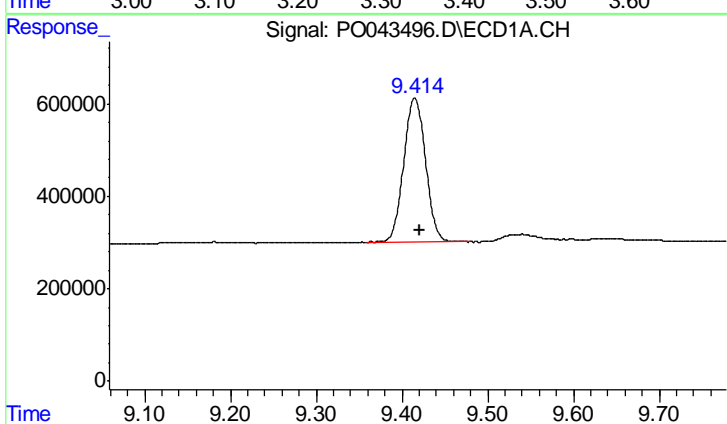
ugo



#1 Tetrachloro-m-xylene

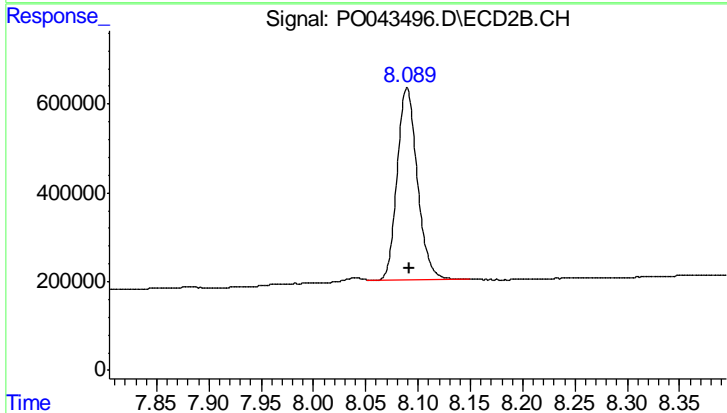
R.T.: 3.320 min
 Delta R.T.: 0.004 min
 Response: 15182152
 Conc: 19.68 ng/ml

4/6/2018 2:43:38 PM



#2 Decachlorobiphenyl

R.T.: 9.415 min
 Delta R.T.: -0.005 min
 Response: 5502705
 Conc: 11.14 ng/ml



#2 Decachlorobiphenyl

R.T.: 8.089 min
 Delta R.T.: -0.003 min
 Response: 5786155
 Conc: 8.73 ng/ml